

Technical Bulletin

Retalix Store HASP Requirements and Installation

ENTP-TECH-06:22

August 30, 2006

The following instructions come into play when installing Retalix HQ or Retalix Store versions 5.3.0.066 or higher.

Software required for the HASP:

- License file for HQ or Store application that contains module -- HardwareKey
- HASP_HL_driver_setup.exe (currently version 5.2 as of document date)
- lmsetup.exe program (License Manager software)
- If needed, go to <http://aladdin.com/> for HASP information.

Installation procedures for HASP driver:

NOTE: Do not put HASP on USB port until told to do so!!

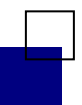
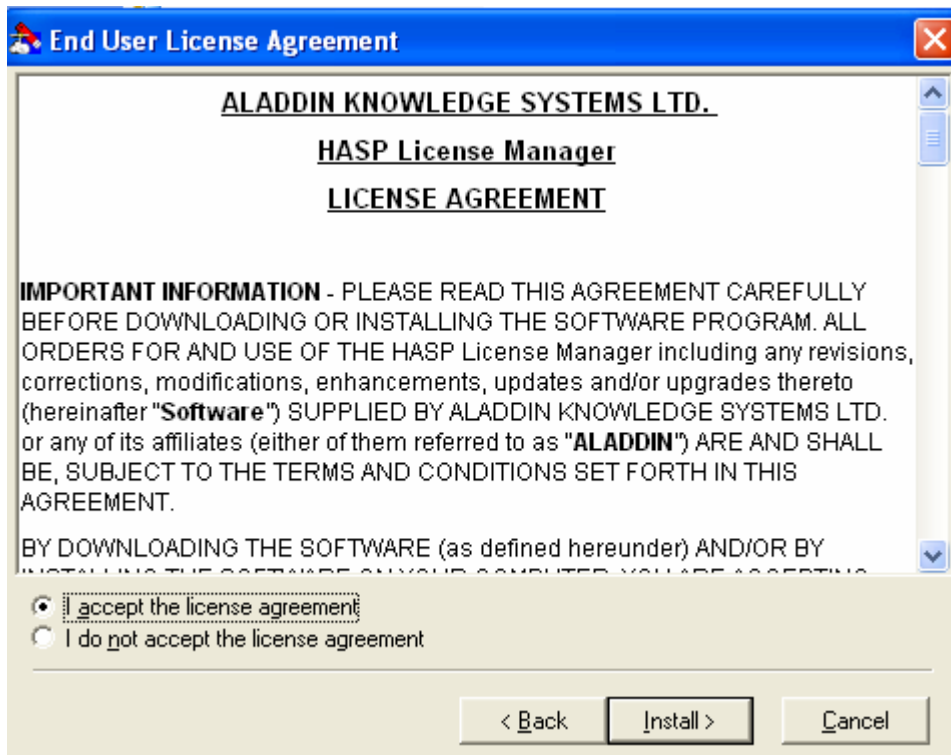
- First install Retalix application on server so you have the license in place.
- Suggest create folder off C drive called Hasp
- Place both the HASP_HL_driver_setup.exe program and lmsetup.exe program in this folder
- Run the HASP_HL_driver_setup.exe program
- Run the Lmsetup.exe program



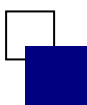
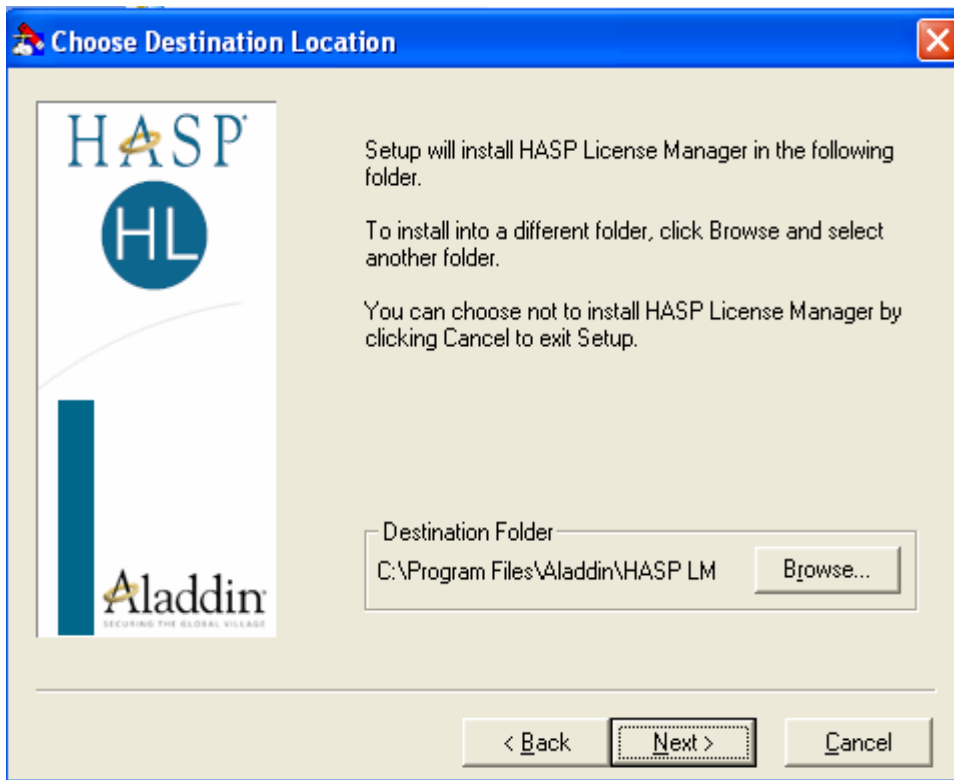
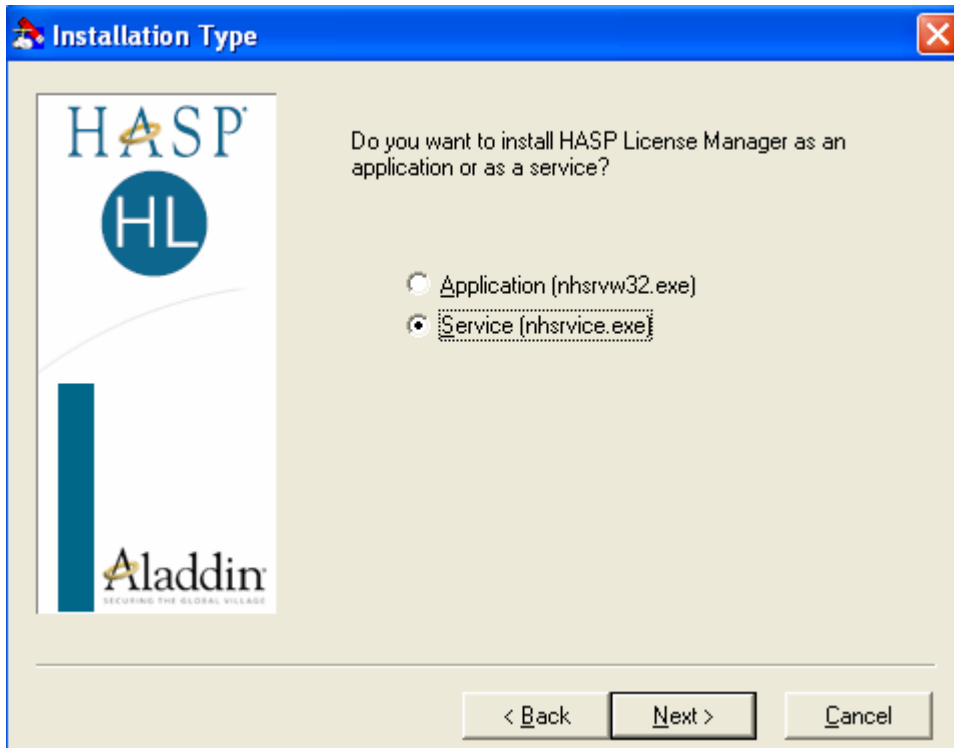
This document and information are supplied to StoreNext Retail Technologies personnel and third parties to assist them in doing business with StoreNext. They are not to be used or distributed for any other purpose.

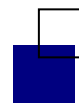
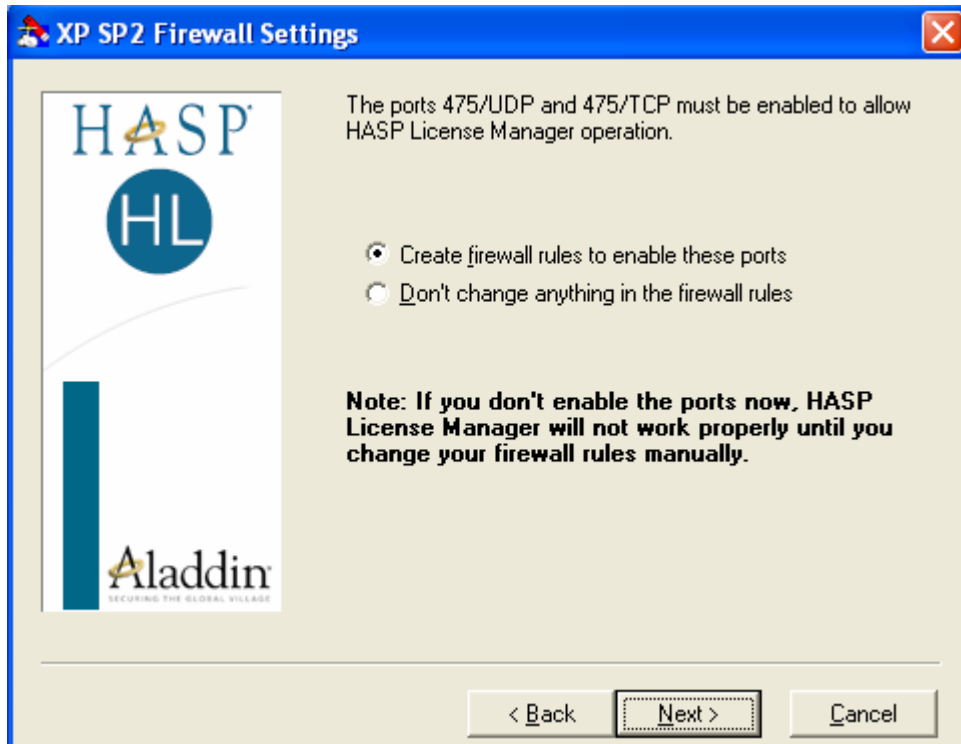
StoreNext Retail Technologies LLC endeavors to ensure that the information in this document is correct and fairly stated, but does not accept liability for any error or omission.

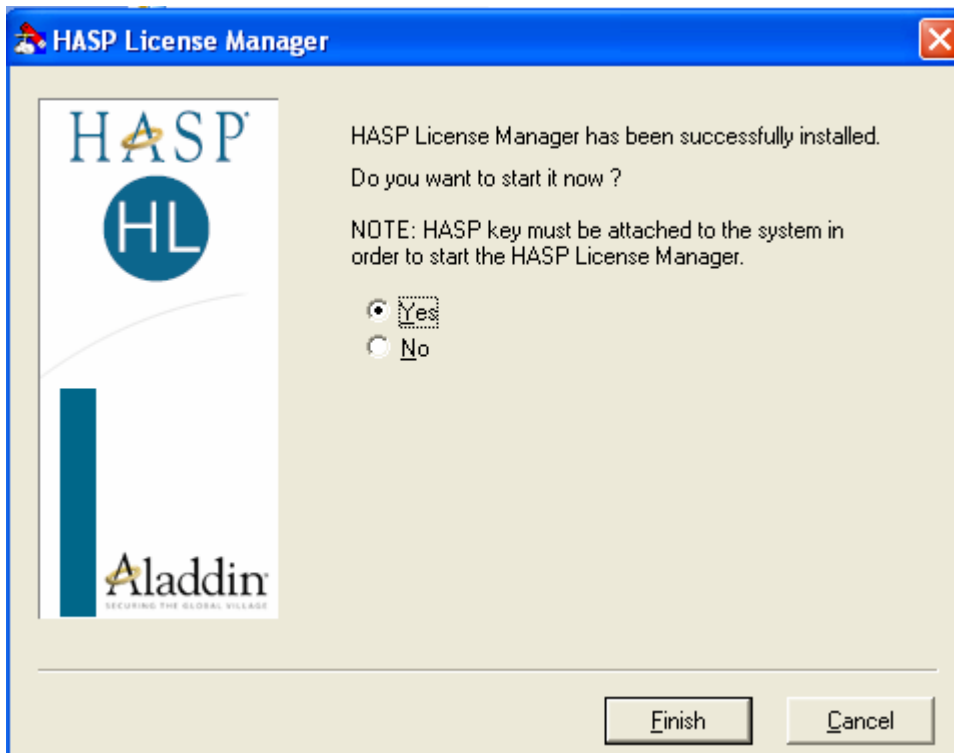
The following screen shots show the steps installing License Manager Software



Install as service. Note service process is nhsrvice.



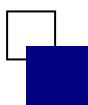




Next screen shows Hasp License Manager on systray



Double click icon to see activity log



To Your Success,

Gary

*Gary Hutchison
Technical Specialist*

