



Ultimate
Performance!

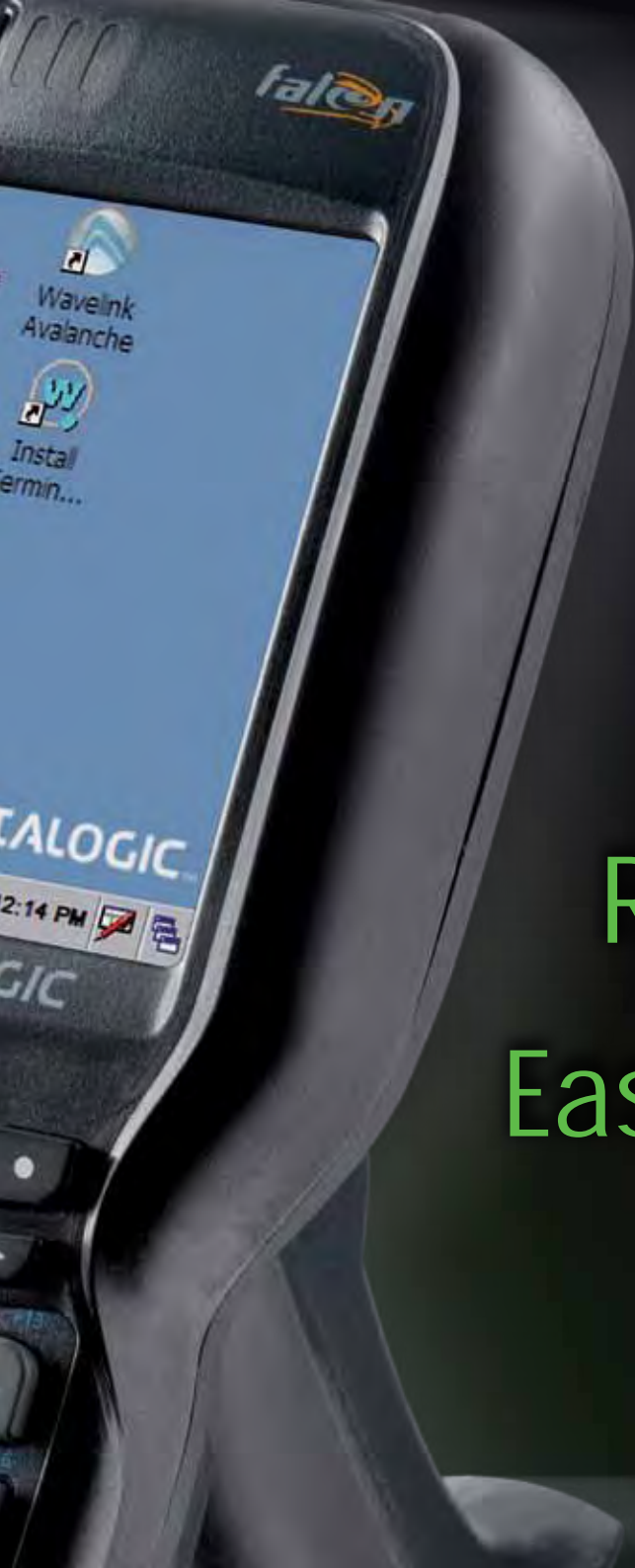
falcon™ X3

DATALOGIC™

DATALOGIC MOBILE

Uniting functionality and performance to ergonomics!





falcon™ **X3**

Ergonomic and rugged
Real time data capture
Easy to deploy and manage

Where, Who and Why

Falcon™ X3 fits a variety of Retail in Store environments especially larger store formats. These include Mass and General Merchandisers, Warehouse Clubs, Do It Yourself, and Grocery. The Falcon™ X3 is primarily used by the retail store associate.

Retail associates carry out a variety of inventory accountability and communications tasks. Stock counts for year-end inventory, spot checks on items with high shrink, and receiving activities require the highest possible speed and accuracy to complete the activity in the shortest possible time. Picking, put away, price verification and price adjustments require communication with the host system for associate direction. Voice communications and online resources help the associate quickly track down answers to customer questions.

The new Datalogic Falcon™ X3 mobile computer delivers the ultimate in ruggedness, ergonomics, computing and data capture technologies. The Falcon's Summit IEEE 802.11 a/b/g radio with CCX v4 certification from Cisco ensures the highest level of security for PCI compliance. Datalogic innovations include the patented good read feedback to better blend with the retail floor mood and the addition of a camera for promotional end cap verification. Falcon™ X3 delivers rugged construction, laser and image data capture, along with real time communications in a product that is effortless to develop for, deploy and manage.



RETAIL



A large background image showing a person in a warehouse, wearing a green shirt and dark pants, walking past tall shelves filled with cardboard boxes. The person is holding a mobile device, likely a Datalogic Falcon X3, which is the focus of the advertisement.

WAREHOUSING



Falcon™ X3 -fits a variety of warehouse environments including

- Distribution centers: retail, wholesale, manufacturing, consumer products, food and beverage
- Manufacturing warehouses: consumer products, automotive, industrial, electronics and pharmaceuticals
- Third party logistics (3PL)

Warehouse users of mobile computers carry out a variety of inventory accountability and communications tasks centred on the receipt and disposition of goods. Receiving starts the process as new material arrives at a facility. In some cases, goods will literally be transferred from incoming to outgoing trucks, a function called cross docking. Sorting and put away operations require communication and direction from the host system to ensure the goods are accurately stored for later retrieval. Picking and staging activities kick off the shipping process. Finally stock counts for year-end inventory and cycle counts to verify inventory accuracy must be completed in the shortest possible time.

The new Datalogic Falcon™ X3 mobile computer delivers the ultimate in ruggedness, ergonomics, computing and data capture technologies. Falcon™ X3 options provide a tailored solution for demanding environments needing real time transaction visibility. The Falcon's Summit IEEE 802.11 a/b/g radio with CCX v4 certification from Cisco ensures seamless roaming in warehouse and logistics environments. Datalogic innovations include the patented good read feedback for error reduction in noisy environments and the addition of a camera for damaged goods documentation. Falcon™ X3 delivers rugged construction, laser and image data capture, along with real time communications in a product that is effortless to develop for, deploy and manage.

Ergonomic and rugged



Overmold reinforced polycarbonate structure survives drops of 1.8 m (6 ft) and seals to an IP64 protection class



Rubberized seals prevent dust and water intrusion to an IP64 protection class



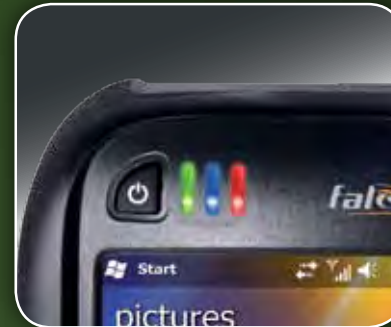
Crystal clear, 3.5" QVGA color display



Single piece battery



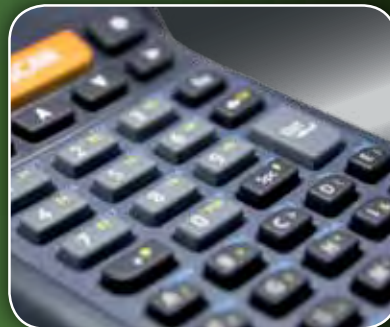
Pistol grip handle with finger rest for balance and control



Status LEDs: power, scan and keyboard status



Numeric keyboard & full alpha-numeric keyboard



Polycarbonate key caps



Contoured shape promotes single handed use

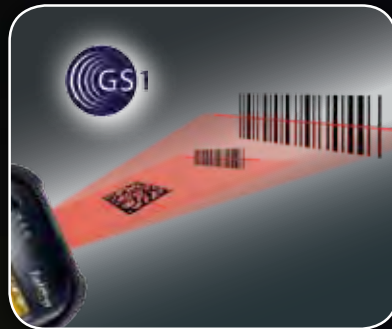


Reserved label area for customer identifiers



Real time data capture

falco™ X3



- Imager
- Laser Scanner
- Auto Ranging Laser (XLR)
- New decoding symbology GS1 DataBar™



Power³ parallel computer architecture of XScale™ PXA310; Cortex-M3, 256 MB RAM and 256 MB Flash



Green Spot™ Technology



Memory: 256 MB RAM / 256 MB Flash with MicroSD memory expansion



Summit IEEE 802.11a/b/g radio with diversity antenna and CCX v4 security



Bluetooth® wireless Communications 2.0 EDR for simultaneous connections with lower power consumption



3 MPixel Camera with Flash



Main connector with secure connection to serial, USB, or audio

Easy to deploy and manage



Wavelink Avalanche

Prelicensed Wavelink Avalanche, Mobility Center or Site Edition, streamlines device deployment, site management and maintenance. Scan to Configure functionality configures devices by simply scanning a set of customized barcodes.



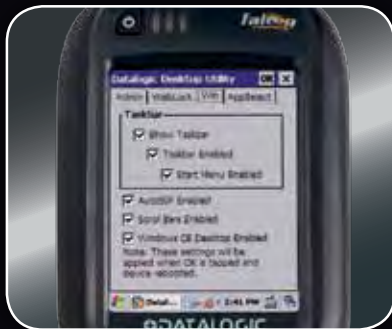
SDK™

Windows SDK™, an open source software development kit (SDK), aids in creating applications for Windows operating systems or alternative environments like Java Virtual Machine. The SDK provides a set of libraries allowing easy application development using C++ and .NET programming languages.



Wavelink Terminal Emulation – Prelicensed

Prelicensed Wavelink's Terminal Emulation (TE), the industry standard, extends mission-critical applications resident on mainframe systems out to mobile workers. TE is a comprehensive solution for accessing and managing connections to applications resident on host systems using 5250, 3270, VT and HP emulation.



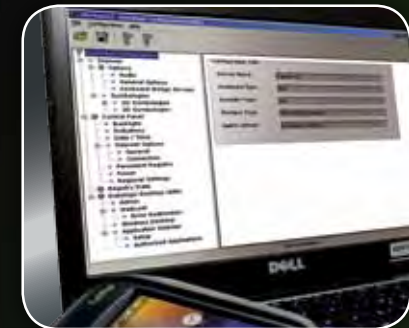
Datalogic Desktop Utilities

Datalogic Desktop Utility restricts computer access according to business need. Limitations can be placed on Internet Explorer and the desktop.



Datalogic Firmware Utility

The Datalogic Firmware Utility upgrades mobile computer firmware.



Datalogic Configuration Utility

Datalogic Configuration Utility is an easy to use PC based application to set up and configure the mobile device.

The Falcon™ X3 provides twelve different main models and a wide variety of accessories to tailor the Falcon™ X3 to the application needs. The main product offers **two form factors**, **two keyboards**, **three capture technologies** and **two operating systems**. Accessories provide a wide arrange of options for charging and communication.



Main model options

Form Factor

Hand Held



Pistol Grip



Keyboard

Numeric 29 Key

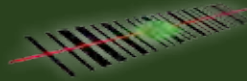


Alpha Numeric 52 Key

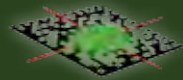


Scanner

High Performance Laser with Green Spot



2D Imager with Green Spot



Auto Ranging Laser (XLR)



Operating System

Windows CE 6 release 3 delivers a streamlined real-time operating system that maximizes storage space and minimizes device start up times. CE 6 comes with Internet Explorer.



Windows Mobile 6.5 user interface minimizes training needs while offering application portability across products. WM 6.5 comes with Microsoft Office Mobile applications like Word Mobile, Excel Mobile, and Internet Explorer Mobile.



Additional software

Software tools make Falcon™ X3 **fit into your business**

Industrial Browser

Industrial Browser is a web-based application offering businesses significant advantages in terms of simplified application development together with enhanced on-screen data representation.

Help Desk

Remote Control allows administrators to remotely diagnose and remedy both applications and device settings.

Security

SecurePlus and Certificate Manager to protect sensitive data when a device is lost or stolen.

Push to Talk

Wavelink Communicator is an optional plug-in for Avalanche, providing 100% client-side push-to-talk capabilities.

Voice Picking

Speakeasy or VoCE allows a two-way dialogue between your warehouse management system and workers, virtually eliminating the need to type data into a mobile device.

Development

MCL-Collection™ is a robust set of integrated tools designed to develop, debug and deploy Mission Critical hand-held device applications.

Accessories

A comprehensive set of accessories complete the offer



Single Slot Dock



Single Slot Dock:
Ethernet - Modem Module



Four Slot Dock:
Ethernet - Charger



Four Slot
Battery Charger



High Capacity
Battery



Holster



Powered
Mobile Dock

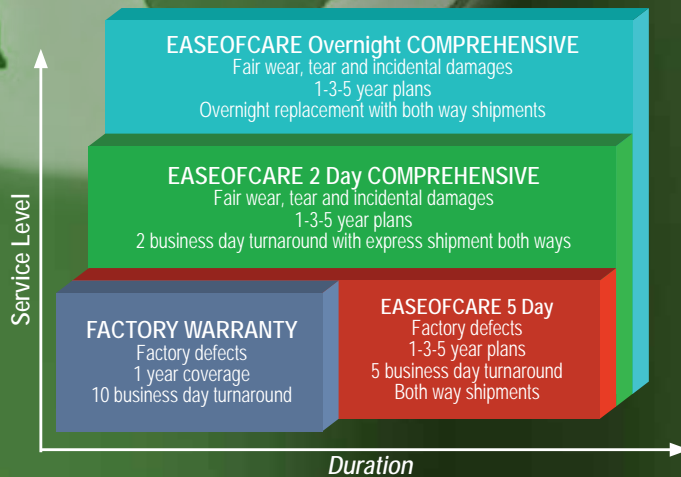


Soft Case



EASEOFCARE

Our EASEOFCARE Service Program ensures the most cost effective way to protect your investment in your chosen Datalogic Mobile device. Each of our EASEOFCARE Service Level options will lower the Total Cost of Ownership (TCO) inherent in all mobile devices by minimizing downtime and service costs, plus maximizing operator productivity. One can also choose from 1, 3 or 5 year coverage.



EASEOFCARE LEVEL 1

Overnight Replacement Comprehensive

- Next business day product replacement
- Datalogic owned replacement pool
- Shipping charges paid both ways
- Incidental damage covered
- Wear and tear, component and parts failures covered
- Some accessories, like battery doors, stylus, hand straps are replaced when damaged and shipped together with the unit
- Wavelink® Avalanche™ software maintenance
- Duration: 3 or 5 years at time of product purchase, or 1 year continuous coverage

EASEOFCARE LEVEL 2

2 Day Comprehensive

- 2 business day repair turnaround
- Shipping charges paid both ways
- Incidental damage covered
- Wear and tear, component and parts failures covered
- Some accessories, like battery doors, stylus, hand straps are replaced when damaged and shipped together with the unit
- Wavelink® Avalanche™ software maintenance
- Duration: 1, 3 or 5 years at time of product purchase, or 1 year continuous coverage

EASEOFCARE LEVEL 3

5 Day

- 5 business day repair turnaround
- Courier charges paid both ways
- Factory defects covered
- Wavelink® Avalanche™ software maintenance
- Duration: 1, 3 or 5 years at time of product purchase, or 1 year continuous or non-continuous coverage

Specifications

> PHYSICAL CHARACTERISTICS

DIMENSIONS	Hand held: 225 x 88 x 55 mm, 64 x 40 mm at keyboard (8.9 x 3.5 x 2.2 in, 2.5 x 1.6 in) Pistol grip: 225 x 88 x 168 mm (8.9 x 3.5 x 6.6 in)
WEIGHT	Hand held: 626 g (22.1 oz) Pistol grip: 699 g (24.6 oz)
DISPLAY	Transflective TFT daylight readable color display, 240 x 320 pixels, 3.5 inch diagonal, 64K colors, 200 nit backlight, touch screen
AUDIO KEYBOARD	Loudspeaker; Microphone Polycarbonate hard cap keyboards with backlight 29 key numeric or 52 key alpha numeric with discrete navigation
OPERATING TEMPERATURE	-20°C to 50°C (-4°F to 122°F)
STORAGE TEMPERATURE	-40°C to +70°C (-40°F to 158°F)
DROP RESISTANCE	Withstands 18 drops from 1.8 m (6 ft) onto concrete
ENVIRONMENTAL SEALING	IP64 standard for water and dust resistance

> SYSTEM

OPERATING SYSTEM	Microsoft Windows CE 6.0 with Microsoft WordPad and Internet Explorer 6.0 Microsoft Windows Mobile 6.5 with Mobile tools: Outlook Mobile, Word Mobile, Excel Mobile, PowerPoint Mobile, One Note Mobile and Internet Explorer Mobile 6.0
MICROPROCESSOR	XScale™ PXA310 @ 624 MHz
COPROCESSOR	Cortex-M3, 32 bit @ 72 MHz
SYSTEM RAM MEMORY	256 MB
SYSTEM FLASH MEMORY	256 MB
EXPANSION SLOTS	MicroSD card slot compatible with SDHC cards, user-accessible
REAL-TIME CLOCK	Time and date stamping under software control
POWER SUPPLY	Removable battery pack with rechargeable Li-ion batteries; 3.7 V 5000 mAh (18.5 Watt hours)

> COMMUNICATIONS

INTERFACES	Main connector with USB Host, USB Client, RS232 up to 115.2 Kbps, and audio headset support
LOCAL AREA NETWORK (LAN)	Summit IEEE 802.11 a/b/g Frequency range: Country dependent, typically 2.4 GHz and 5.2 GHz
PERSONAL AREA NETWORK (PAN)	Cisco Compatible CCX v4 Security Bluetooth® Wireless Technology IEEE 802.15 Class 2 with EDR

> CAPTURE

LASER CHARACTERISTICS

SCANNING RATE
MINIMUM RESOLUTION
DEPTH OF FIELD

High Performance Laser (HPL) with Green Spot, Auto Ranging Laser (XLR)
40 ± 6 scan/sec
0.20 mm / 7.5 mils
HPL: 7 - 91 cm (3 - 36 inches) depending on bar code density
XLR: Non reflective labels from 18 - 393 cm (7 to 154 in) depending on bar code density; Reflective labels to 1376 cm (542 in)
All ranges dependent bar code size and density.
Near range on reflective bar codes determined by degree of reflectivity and width of bar code
GS1 Databar, EAN/UPC, Code 39, Code 32, 2/5 Codes, Codabar, Code 128, EAN128, MSI, Code 93

BAR CODES

LASER CLASSIFICATION

IMAGER CHARACTERISTICS

SCANNING RATE
MINIMUM RESOLUTION
DEPTH OF FIELD

VLD - Class 2/II EN 60825-1/CDHR
Wide Aspect Imager with Green Spot
60 frames/sec maximum
Linear codes at 4 mils; 2D codes at 5 mils
5 to 40 cm (2 to 16 in), depending on bar code size and density
PDF417, Micro PDF, Datamatrix, QR Code, Micro QR, Maxicode, Aztec, Postnet, Planet, Japan Post, Aztec, Australia Post, KIX Code, Royal Mail, Intelligent Mail and UPU FICS, GS1 Databar, EAN/UPC, Code 32, Code 39, 2/5 Codes, Codabar, Code 128, EAN128, MSI, Code 93, ISBT 128, Bookland EAN and ISSN EAN
CDRH/IEC Class II
IEC Class 1M

BAR CODES

LASER CLASSIFICATION

LED CLASSIFICATION

CAMERA CHARACTERISTICS

IMAGE FORMATS

3 Mega pixel color with autofocus and LED flash
BMP, JPEG



Software

DEVELOPMENT

Datalogic Windows SDK™
Wavelink® Studio™
MCL-Collection™
Java Virtual Machine

CONFIGURATION & MAINTENANCE

Wavelink Avalanche® MC prelicensed
Wavelink Avalanche® SE prelicensed
Avalanche Remote Control™
Datalogic Firmware Utility
Datalogic Desktop Utility
Datalogic Configuration Utility

TERMINAL EMULATION

Wavelink® Industrial Browser™
Wavelink® Terminal Emulation™ prelicensed

SECURITY


Avalanche CE Secure™
Wavelink® Certificate Manager

APPLICATIONS

Vo-CE™ (voice recognition)
Wavelink® Communicator (push to talk)
Wavelink® SpeakEasy (voice recognition)
Pal Application Library prelicensed

www.falcon.mobile.datalogic.com

 **DATALOGIC**™

 **DATALOGIC MOBILE**

© 2011 Datalogic Mobile Srl. - 2011 May • All rights reserved. • Protected to the fullest extent under U.S. and international laws.
• Copying, or altering of this document is prohibited without express written consent from Datalogic Mobile Srl. Datalogic and the Datalogic logo are registered trademarks of Datalogic S.p.A. in many countries, including the U.S.A. and the E.U. Falcon is a registered trademark of Datalogic Mobile Inc. in the U.S.A., Canada and the E.U. The Falcon logo is a trademark of Datalogic Mobile Inc. All other brand and product names mentioned herein are for identification purposes only and may be trademarks or registered trademarks of their respective owners.