






The logo for ISS 45, consisting of the letters 'ISS' stacked above the number '45' in a large, bold, black serif font, all enclosed within a thin black rectangular border.

-  *ISS45 Version 7.10.1*
-  *Release Notes & What's New*
- 
- 
- 

ISS45 Version 7.10.1 Release Notes & What's New

Date of Issue	Product Identification Number	Part Number	Brief Description
October 2005	45001/080	89000259	7.10.1 Release

**© Copyright StoreNext Retail Technologies LLC 1995-2005
All rights reserved**

This publication is protected by federal copyright law. No part of this publication may be reproduced or transmitted into any human or computer language in any form or by any means, stored in a retrieval system, transmitted, redistributed, translated or disclosed to third parties, or de-compiled in any way including, but not limited to, photocopy, photograph, electronic, mechanical, magnetic or manual without the express written permission of StoreNext Retail Technologies LLC or its licensors, if any. All copies, so authorized, shall contain a full copy of this copyright notice.

StoreNext Retail Technologies LLC endeavors to ensure that the information in this document is correct and fairly stated but does not accept liability for any error or omission. StoreNext Retail Technologies LLC makes no representation or warranties with respect to the contents hereof, and specifically disclaims any implied warranties of merchantability or fitness for a particular purpose or non-infringement. No commitments by StoreNext or its suppliers are made from this documentation which is provided for information only.

Development of StoreNext products and documentation is continuous: StoreNext Retail Technologies LLC reserves the right to revise this publication and to make changes from time to time in the contents hereof or in the products herein described or discussed without notice and without any obligation of StoreNext Retail Technologies LLC to notify any person or organization of such revision or changes. Information published in this document will likely become obsolete over time and it is recommended that users regularly check for updates and newer versions.

StoreNext Retail Technologies LLC has prepared this manual for use by users, authorized third parties and personnel of StoreNext Retail Technologies LLC as a guide to the proper installation, operation, customization and/or maintenance of StoreNext Retail Technologies LLC equipment and software. The drawings and specifications contained herein are the property of StoreNext Retail Technologies LLC and/or its licensors.

Third-party products, services, or company names referenced in this document may be trademarked or copyrighted by their respective owners, and are for identification purposes only.

Copyrights, trademarks and license agreements shall be governed and construed in accordance with the laws of the State of Texas and the Federal Arbitration Act, and shall benefit Retailix, its successors, and assigns.

Address comments and corrections to:

StoreNext Retail Technologies LLC
Software Program Director
6100 Tennyson Parkway
Suite 130
Plano, Texas 75024

Table of Contents

Introduction	3
Front Office Enhancements	4
6812 – Track Data Removal & Account Masking.....	4
6934 – Delayed Totaling for POS Accountability	6
7014 – Application Demonstrations via ISS45 Login Screen	7
POS Enhancements	8
5529 – POS Sound Enhancements	8
New Sounds	8
6918 – Illinois Tax Calculation	10
6932 – Secondary ID Pin Pad Prompting	12
6933 – Delayed Gift Card Activation	14
6939 – USCAN Attendant Station Control Checks	16
7085 – FS Eligible Balance on Customer Display.....	17

Introduction

Several new features and enhancements were made recently to the StoreNext ISS45 system as a result of customer change requests. These changes are reflected in the accompanying ISS45 7.1.0.1-050 software. The Change Request Document (CRD) number assigned to each enhancement is listed in the description heading.

These improvements are explained in detail in the following pages and are not included in your Office Users Guide or Office Administrator's Reference. Please keep this system update with your User Guides for quick reference. These changes will be included in the next release of these User Guides. If you have any questions regarding this release, please contact StoreNext Support.

Front Office Enhancements

6812 – Track Data Removal & Account Masking

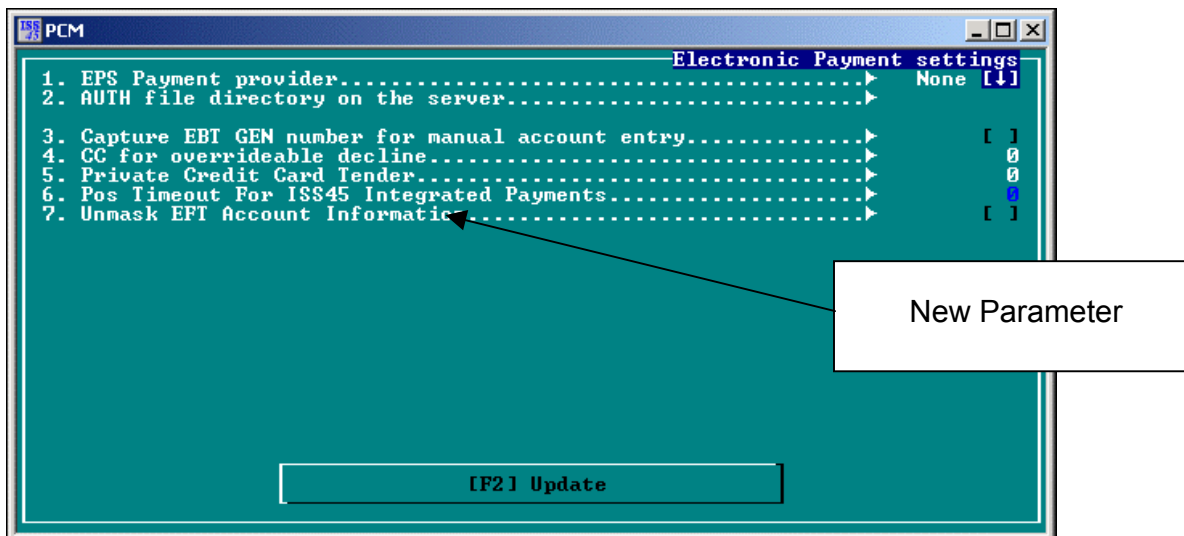
To improve security of customer information (and meet VISA regulations), track data (credit / debit / fleet account information) is either removed or masked (by default) in the transaction log. A new parameter in this ISS45 release controls whether to unmask this information from the transaction log.

New Parameter

To implement this new feature the following parameter has been established.

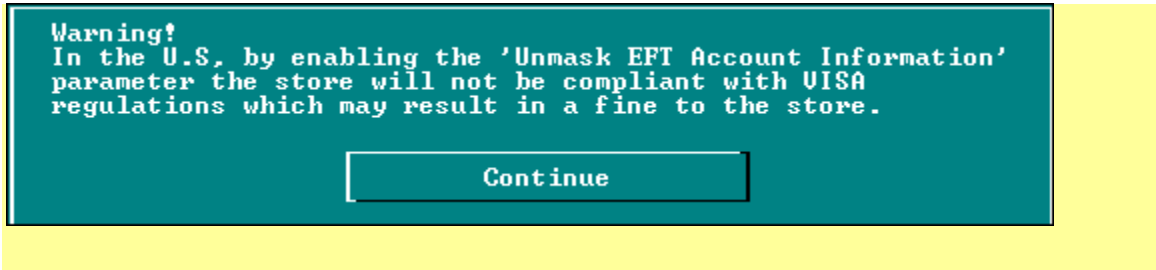
Parameter	Explanation
Unmask EFT Account Information	When this flag is checked, credit/debit/fleet account information will be unmasked in the transaction log.

The parameter is located on the Electronic Payment Settings screen (6-1-3-1).



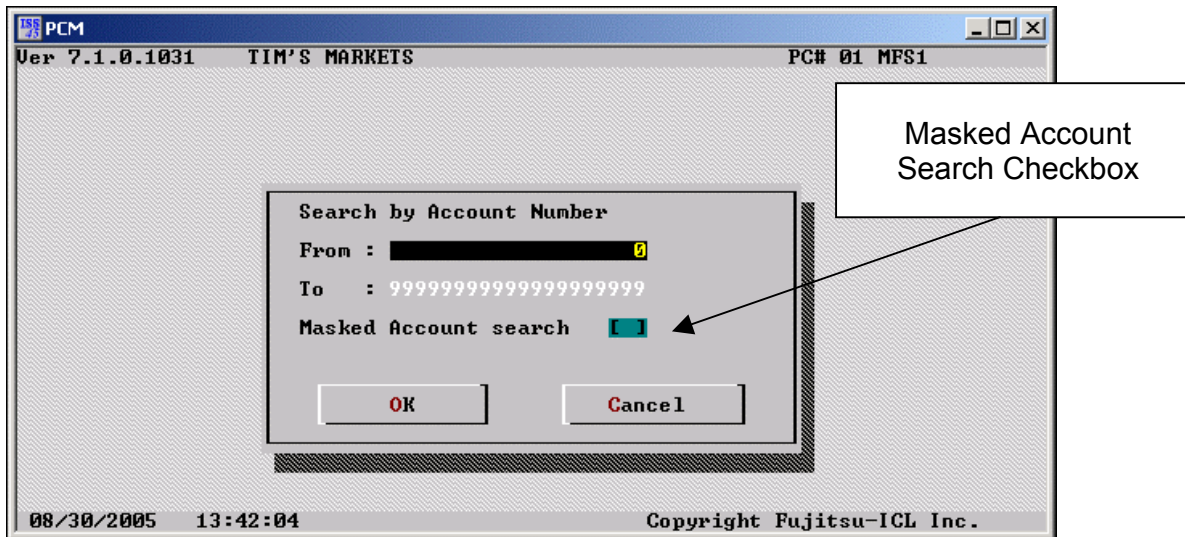
Note:

When the parameter is checked and updated, the following error message will display:



New Masked Account EJ Search Option

The transaction log now captures the first 6 digits and last 4 digits of the credit card number and places zeros in all other fields. With this data masked in the Transaction Log, the Electronic Journal search by Account Number option now provides the ability to search for masked credit card numbers.



For example, if searching for a transaction in which credit card 1111222233334444 was used, enter this number in both the **From:** and **To:** fields and check the "Masked Account Search" checkbox. The EJ search is performed for card 1111220000004444.

6934 – Delayed Totaling for POS Accountability

ISS45 now has the ability to allow over/short totals to be accounted for on the previous day's totals in systems where POS Accountability is implemented. (This feature was previously supported only for Cashier Accountability).

Note:

The "Allow Delayed POS Balancing" parameter must be enabled to take advantage of this feature.

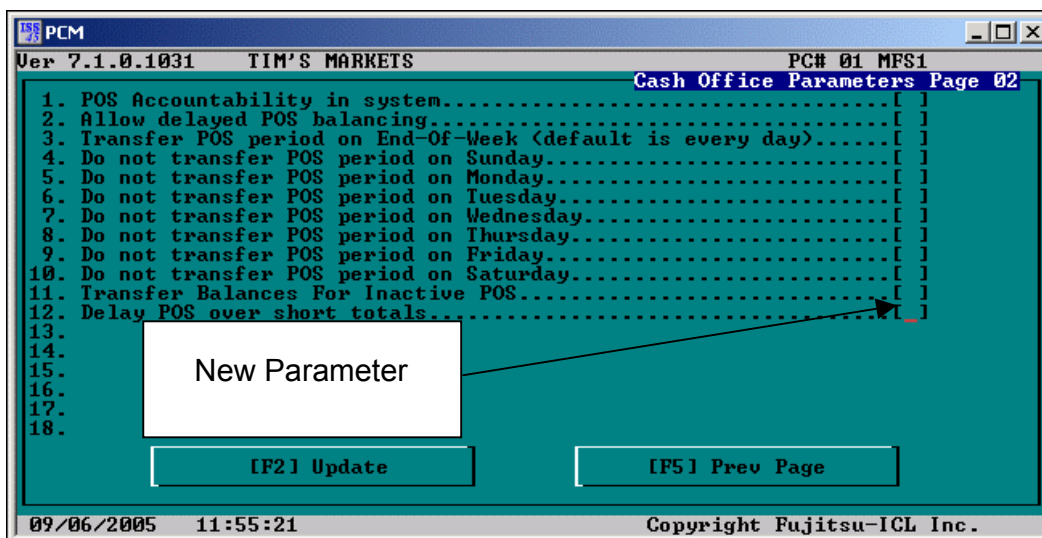
When enabled, the POS Over/Short Report will no longer attribute totals from the last day of the week to the new week's totals.

New Parameter

As part of this new feature the following parameter has been established.

Parameter	Explanation
Delay POS Over Short Totals	In systems configured for POS Accountability, if this flag is checked over/short totals are accounted for on the previous day's totals.

The parameter is located on the Cash Office Parameters Page 2 screen (6-1-1-6-<F6>).

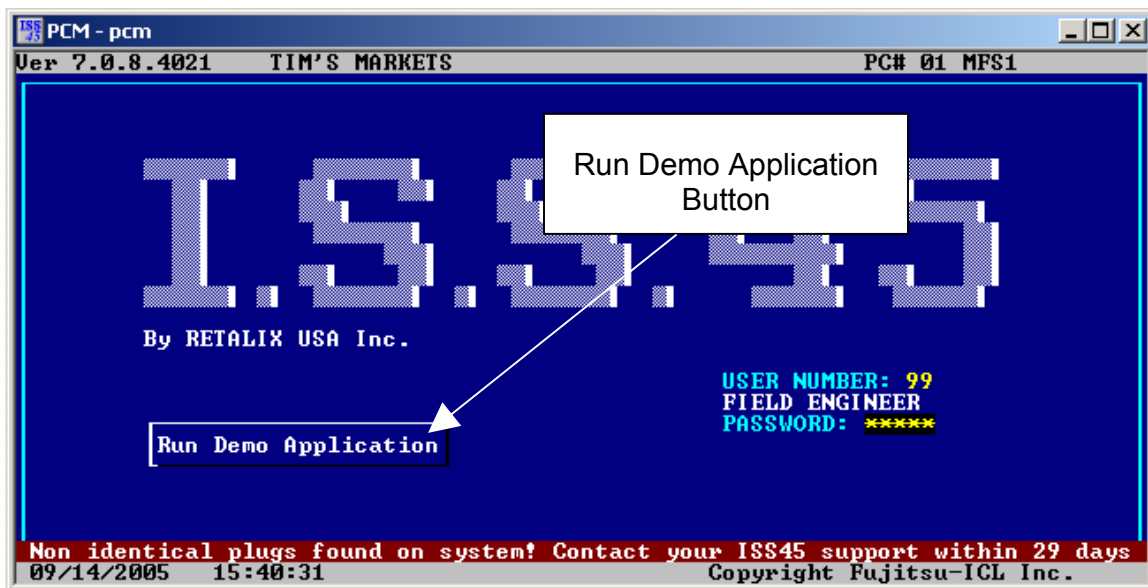


7014 – Application Demonstrations via ISS45 Login Screen

ISS45 now has a link to StoreNext product demonstrations via the ISS45 Login Screen. This feature will be used as a vehicle to expose customers to other application offerings.

New Screen

The ISS45 Login Screen now displays the new “Run Demo Application” button.



The button will be highlighted by default when the screen appears. Press **Enter** to run the demo. Otherwise, press the **Tab** key to move the User Number field for logging in.

Note:

Once you tab to the User Number field you will be unable to execute the demo application until the next time the login screen appears.

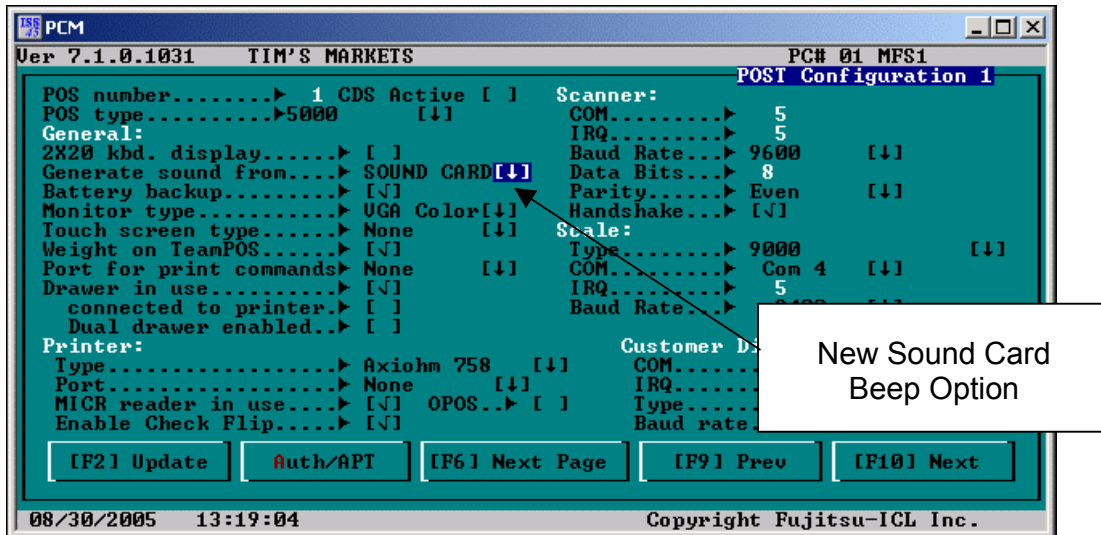
The new \PCMASTER\Content folder will hold the demonstration program and files.

POS Enhancements

5529 – POS Sound Enhancements

Enhancements in this release of ISS45 now enable sounds to be produced at the POS from both the Touch Screen speaker and the PC Sound Card (through external speakers) to help increase cashier performance.

The Post Configuration 1 Screen (6-1-4-1) has new option in the “Generate sound from” field. Select “Sound Card” if connecting external speakers to the PC Sound Card or Touch Screen.



New Sounds

The Touch Screen and PC Sound Card speakers will produce:

- A positive confirmation tone on a successful sale of Item / Department / Weight PLU
- A negative tone on an error
- A sound on any stroke on the menu keys or keypad of the touch screen

In addition, the following new .WAV files are placed in the WinPOS\Sounds folder:

- BazzBeep.wav - used when WinPOS starting up and RSM not loaded, AND used in many error situations (as current mechanism supports)
- CreditProg1Beep.wav - used when credit program is set to have sound effects
- CreditProg2Beep.wav - used when credit program is set to have sound effects
- CreditProg3Beep.wav - used when credit program is set to have sound effects
- CreditProg4Beep.wav - used when credit program is set to have sound effects
- KbdBeep.wav - Keyboard Error to let the cashier know that they pressed a wrong key (as current mechanism supports)
- PrintSoundBeep.wav - used when printing a line is general system parameter turned on
- TechMenuBeep.wav - used when bringing up the tech menu - to cold load or change pos #
- TouchBeep.wav - generally used when screen is being touched - menu item selected, key being pressed, etc

6918 – Illinois Tax Calculation

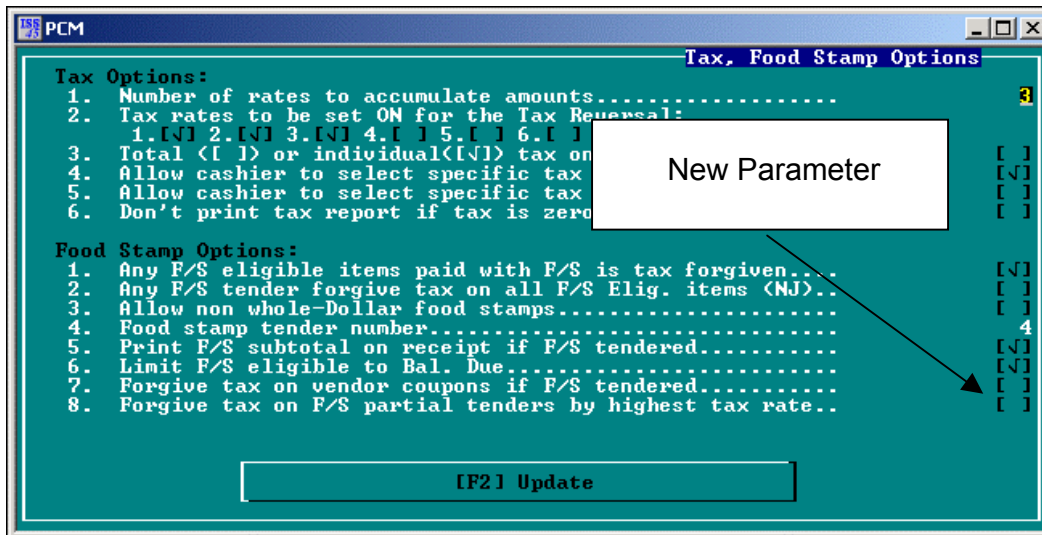
ISS45 can now be configured to adopt the Illinois tax rules regarding partial tendering using food stamps (or EBT). In Illinois only the portion of the transaction paid with food stamps is tax exempt. The tax forgiven is based on the item with the highest tax rate.

New Parameter

To implement this new feature the following parameter has been established.

Parameter	Explanation
Forgive Tax on F/S Partial Tenders by Highest Tax Rate	When this flag is checked, the system will conform to Illinois rules, forgiving tax on partial tendered food stamp transactions will be performed on the item with the highest tax rate.

The parameter is located on the Tax, Foot Stamp Options screen (6-1-2-4).



Example

Item 100 and Item 200 both sell for \$10.00 and are food-stampable. Item 100 has a combined tax rate of 10%. Item 200 has a combined tax rate of 8%. If this new parameter is set and the transaction is partially tendered

with \$10.00 of food stamps, tax will be forgiven on \$1.00 (10% of \$10.00) of the \$20.00 total.

6932 – Secondary ID Pin Pad Prompting

In situations where the customer does not have their member card available at checkout, ISS45 now supports the customer entering their secondary ID (i.e. 10-digit phone number) on the payment terminal pin pad. If the customer does not want to key-enter the phone number at the pin pad, the cashier has the ability to key-enter the phone number through the point of sale terminal.

In idle mode, the pin pad will prompt for the customer's secondary ID if one of the following prompts is displaying at the POS:

- Member Card prompt
- Frequent Shopper prompt
- Secondary ID prompt

The cashier may initiate the secondary ID prompt at the pin pad by using the secondary ID function key at the POS. In sales mode, the pin pad will also prompt for the customer's secondary ID.

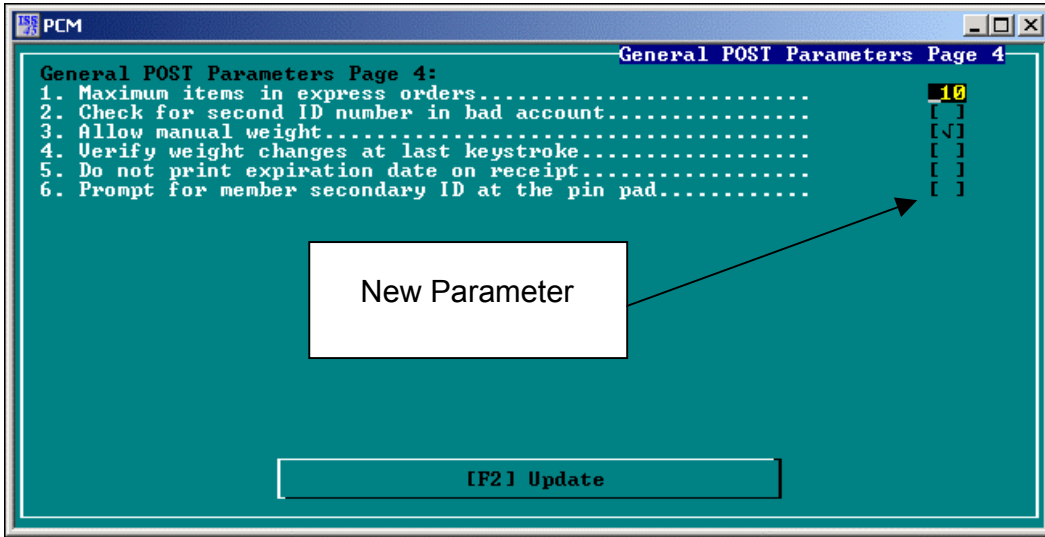
If Corema is used, the secondary ID will be validated against loyalty database. If the member file is contained locally (in Member Maintenance), the secondary ID will be validated against local member file. Once verified the prompt will be cleared at the POS and the pin pad will enter payment mode.

New Parameter

As part of this new feature the following parameter has been established.

Parameter	Explanation
Prompt for Member Secondary ID a the Pin Pad	If this flag is checked, the system will support the entering of a secondary customer ID number on the payment terminal pin pad.

The parameter is located on the General Post Parameters Page 4 screen (6-1-2-1-4).

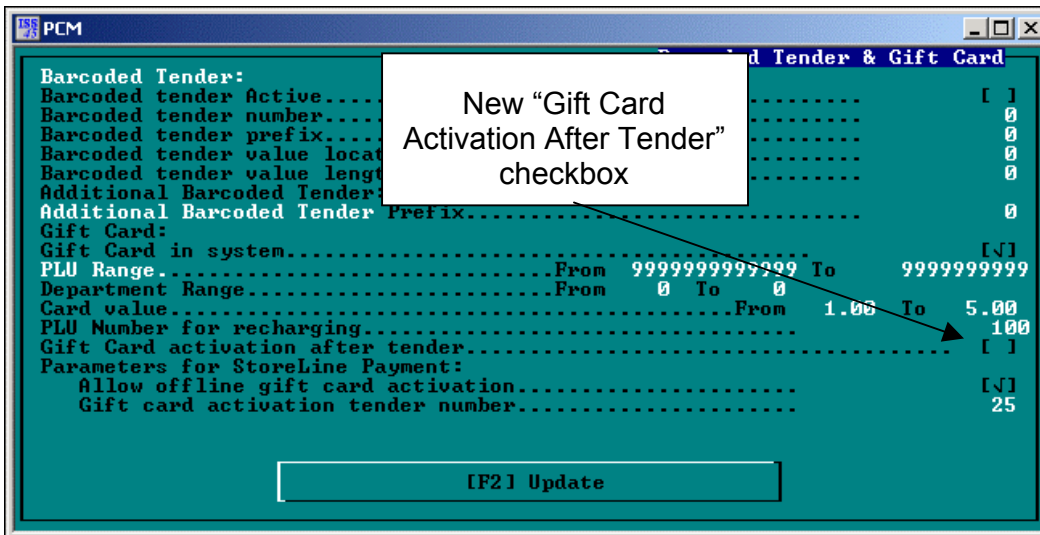


6933 – Delayed Gift Card Activation

A new Barcode Programming setting allows the Gift Card Activation request to be delayed and performed after the ticket (in which the card was purchased) has been tendered. After tendering, the activation request is then sent to the host. Once activation is completed, the activation code is printed on the receipt.

New Field

The Barcode Tender & Gift Card Screen (6-1-3-9-2) contains a new “Gift Card Activation After Tender” checkbox.



Field	Description
Gift Card Activation After Tender	For Barcode Types of “Gift Card Activation”, check this box to initiate activation only after the transaction has been tendered.

New POS Screen

The following is an example of a screen will be displayed at the POS after tendering, when gift card activation is to take place.

SWIPE \$17.00 CARD
W/PLU:00000000001024

If activation fails, the following message will display:



Gift Card Authorization
Failed...

Please have customer take
their receipt and gift card
to the Service Desk

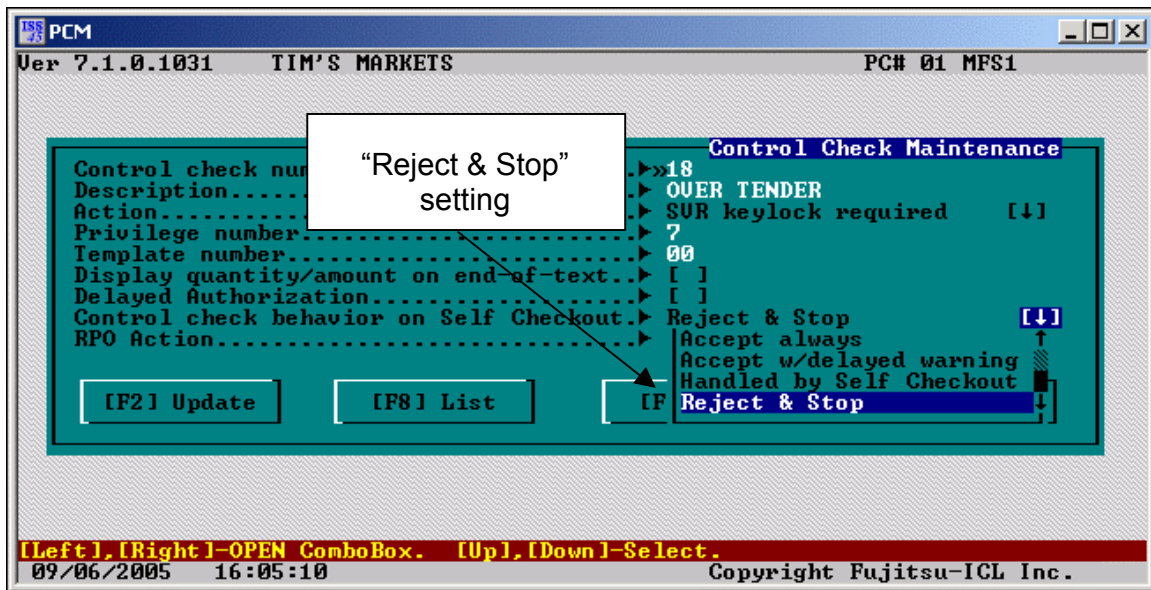
Hit (C) to Continue

6939 – USCAN Attendant Station Control Checks

Control Checks now display on the USCAN attendant station when an item (prompting a control check) is scanned in the USCAN lane. In previous ISS45 releases, when an item was rung in the USCAN lane that generated a control check (displaying to the customer as the “Please Wait for Attendant” message), the item had to be sold in direct mode at the attendant station to duplicate it for display purposes. With this new feature, the control check will display as soon as the attendant enters direct mode.

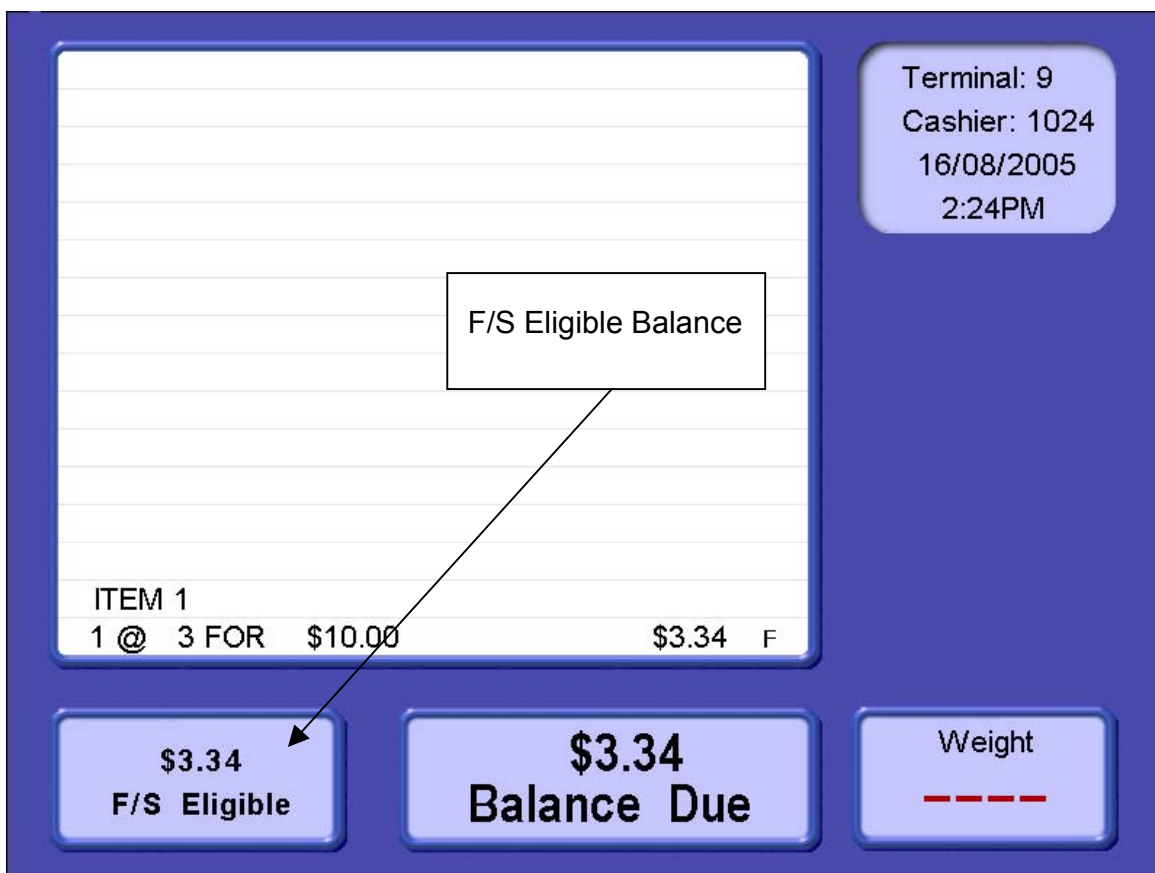
Required Setting

The “Control Check Behavior on Self Checkout” setting must be set to “Reject & Stop” in Control Check Maintenance for a specific control check to be sent to the attendant station.



7085 – FS Eligible Balance on Customer Display

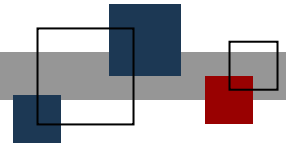
The customer display now displays the food stamp eligible balance in the lower left hand corner of the screen.



Note:

The following lines have been added to the Winpos.ini file to implement this feature:

```
CustDisp:FSBalDue=Yes
CustDisp:FSBalDueFont=4
CustDisp:FSBalDueRow=500
CustDisp:FSBalDueCol=165
CustDisp:FSBalDueTextFont=4
CustDisp:FSBalDueText=F/S Eligible
CustDisp:FSBalDueTextRow=530
CustDisp:FSBalDueTextCol=70
```

© StoreNext Retail Technologies LLC 2005

StoreNext Retail Technologies LLC endeavors to ensure that the information in this document is correct and fairly stated but does not accept liability for any error or omission.

The development of StoreNext products and services is continuous and published information may not be up to date. It is important to check the current position with StoreNext. This document is not part of a contract or license save insofar as may be expressly agreed.