



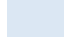


The logo for ISS 45, consisting of the letters 'ISS' stacked above the number '45' in a large, bold, black serif font, all enclosed within a thin black rectangular border.

-  *ISS45 Version 7.10.1-080*
-  *Release Notes & What's New*
- 
- 
- 

## ISS45 V7 Release Notes & What's New

<b>Date of Issue</b>	<b>Product Identification Number</b>	<b>Part Number</b>	<b>Brief Description</b>
February 2006	45001/080	89000278	7.10.1-080 Release

**© Copyright StoreNext Retail Technologies LLC 1995-2006  
All rights reserved**

This publication is protected by federal copyright law. No part of this publication may be reproduced or transmitted into any human or computer language in any form or by any means, stored in a retrieval system, transmitted, redistributed, translated or disclosed to third parties, or de-compiled in any way including, but not limited to, photocopy, photograph, electronic, mechanical, magnetic or manual without the express written permission of StoreNext Retail Technologies LLC or its licensors, if any. All copies, so authorized, shall contain a full copy of this copyright notice.

StoreNext Retail Technologies LLC endeavors to ensure that the information in this document is correct and fairly stated but does not accept liability for any error or omission. StoreNext Retail Technologies LLC makes no representation or warranties with respect to the contents hereof, and specifically disclaims any implied warranties of merchantability or fitness for a particular purpose or non-infringement. No commitments by StoreNext or its suppliers are made from this documentation which is provided for information only.

Development of StoreNext products and documentation is continuous: StoreNext Retail Technologies LLC reserves the right to revise this publication and to make changes from time to time in the contents hereof or in the products herein described or discussed without notice and without any obligation of StoreNext Retail Technologies LLC to notify any person or organization of such revision or changes. Information published in this document will likely become obsolete over time and it is recommended that users regularly check for updates and newer versions.

StoreNext Retail Technologies LLC has prepared this manual for use by users, authorized third parties and personnel of StoreNext Retail Technologies LLC as a guide to the proper installation, operation, customization and/or maintenance of StoreNext Retail Technologies LLC equipment and software. The drawings and specifications contained herein are the property of StoreNext Retail Technologies LLC and/or its licensors.

Third-party products, services, or company names referenced in this document may be trademarked or copyrighted by their respective owners, and are for identification purposes only.

Copyrights, trademarks and license agreements shall be governed and construed in accordance with the laws of the State of Texas and the Federal Arbitration Act, and shall benefit Retailix, its successors, and assigns.

Address comments and corrections to:

StoreNext Retail Technologies LLC  
Software Program Director  
6100 Tennyson Parkway  
Suite 130  
Plano, Texas 75024

---

# Table of Contents

<b>Introduction</b> .....	<b>3</b>
<b>Front Office Enhancements</b> .....	<b>4</b>
7660 – Price Override Control Check for Gift Cards .....	4
7661 – Per Transaction Gift Card Purchase Limits .....	6
<b>POS Enhancements</b> .....	<b>8</b>
7249 – Vendor Gift Cards Support.....	8
7662 – EAN 128 Gift Card Support (POS).....	10



# Introduction

Several new features and enhancements were made recently to the StoreNext ISS45 system as a result of customer change requests. These changes are reflected in the accompanying ISS45 7.1.0.1-080 software. The Change Request Document (CRD) number assigned to each enhancement is listed in the description heading.

These improvements are explained in detail in the following pages and are not included in your Office Users Guide or Office Administrator's Reference. Please keep this system update with your User Guides for quick reference. These changes will be included in the next release of these User Guides. If you have any questions regarding this release, please contact StoreNext Support.

# Front Office Enhancements

## 7660 – Price Override Control Check for Gift Cards

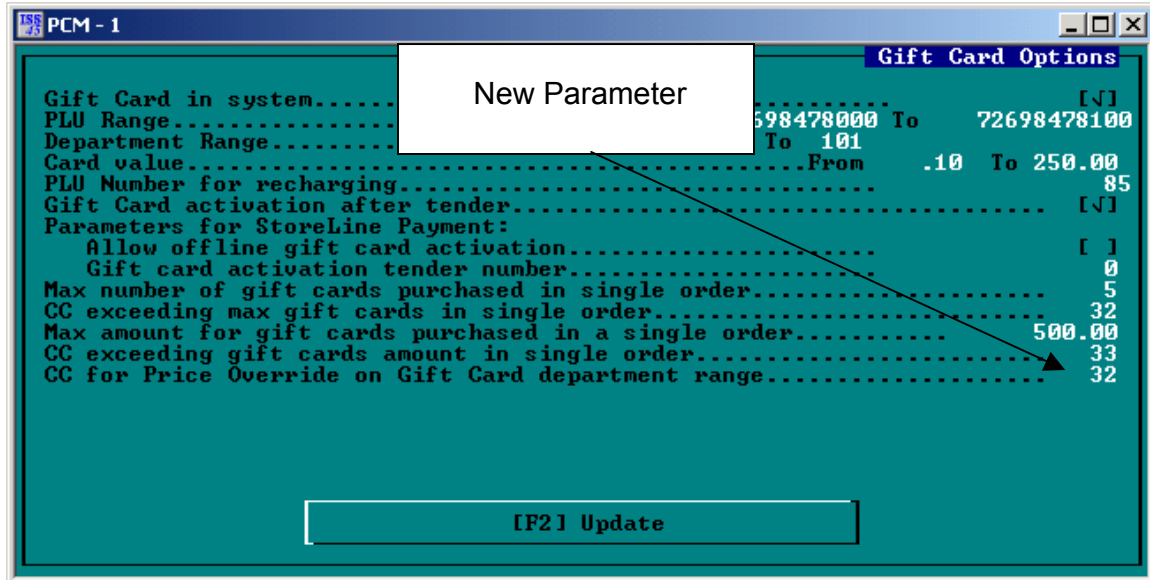
New in this release is the ability to control the Price Override function when selling gift cards designated by a department range. When a cashier attempts to perform a price override when selling a gift card (based on a valid department range for gift cards):

- If the new control check is set to a valid control check number, the price override will be controlled by the store's security settings for the cashier
- If the new control check is zero then ISS45 will follow current functionality
- If the control check is accepted then the price override is allowed and the cashier may enter a new price
- If the control check is rejected then the price override is prohibited

### New Field

To accommodate this enhancement, a new field has been added to the new Gift Card Options screen.

The parameter is located on the new Gift Card Options screen (6-1-3-9-4).



Field	Description
CC for Price Override on Gift Department Range	Enter the number of the control check to issue when a price override is attempted on a Gift Card item that is attached to a department within the Gift Card Department Range.

**Note:**

The feature does not apply to Gift Cards assigned by a PLU range.

➤ **To override the price of a Gift Card:**

- 1 Locate and press the Price Override Key.
- 2 Scan or key-enter the Gift Card number. The control check will be issued.
- 3 Respond to the control check. If accepted, the price prompt will display.

**Note:**

If the control check is rejected, the cashier will have to scan the item again and sell it at the set price.

- 4 Enter the price for the card. (This is the price will be sent to MicroTrax).

## 7661 – Per Transaction Gift Card Purchase Limits

New parameters in this release of ISS45 will provide the following gift card single transaction limitations and control checks.

- The maximum number of cards that can be purchased
- If the maximum number of cards exceeded, the control check number to issue
- The maximum dollar amount that can be purchased
- If the maximum dollar amount is exceeded, the control check number to issue

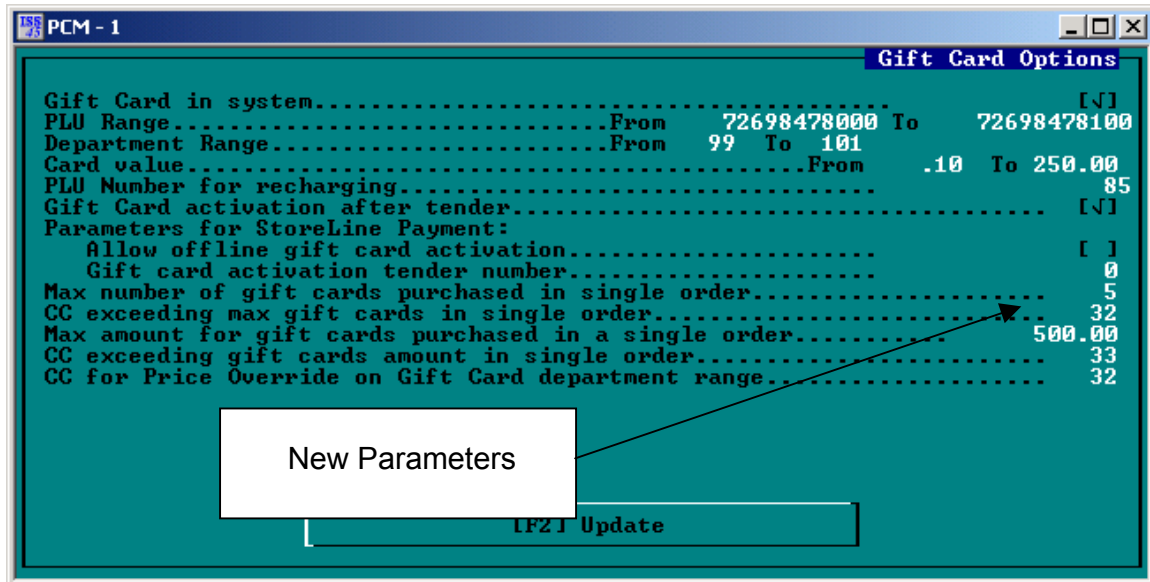
### New Screens

In previous ISS45 releases both Barcoded Tender and Gift Card option settings shared the same screen (6-3-1-9-2). With this release, Barcoded Tender Options will exist independently in that previous location.

Barcoded Tender Options	
Barcoded tender Active.....	[X]
Barcoded tender number.....	12
Barcoded tender prefix.....	29
Barcoded tender value location.....	8
Barcoded tender value length.....	5
Additional Barcoded Tender:	
Additional Barcoded Tender Prefix.....	50

[F2] Update

The Gift Card Options have now been moved to a new screen (6-3-1-9-4).



## New Fields

As part this enhancement the following new fields have been added to this screen:

Field	Description
Max Number of Gift Cards Purchased in a Single Order	Enter the maximum number of gift cards that may be purchased in a single transaction. The valid range is 0-99.
CC Exceeding Max Gift Cards Purchased in Single Order	Enter the number of the control check to issue when the maximum number of gift cards purchased has been exceeded.
Max Amount for Gift Cards Purchased in a Single Order	Enter the maximum dollar amount of gift cards that may be purchased in a single transaction. The valid range is \$0.00 to \$9999.99.
CC Exceeding Gift Cards Amount in Single Order	Enter the number of the control check to issue when the maximum dollar amount of gift cards purchased has been exceeded.

If the issued control check is rejected, the Gift Card that triggered the control check (and exceeded the transaction limits for either quantity or amount) will not be sold.

### Note:

If both the quantity and dollar amount limits are set to 0 and \$0.00 respectively, and both control checks are set to "0", the cashier will be able to sell an unlimited number of gift cards with an unlimited accumulative value.

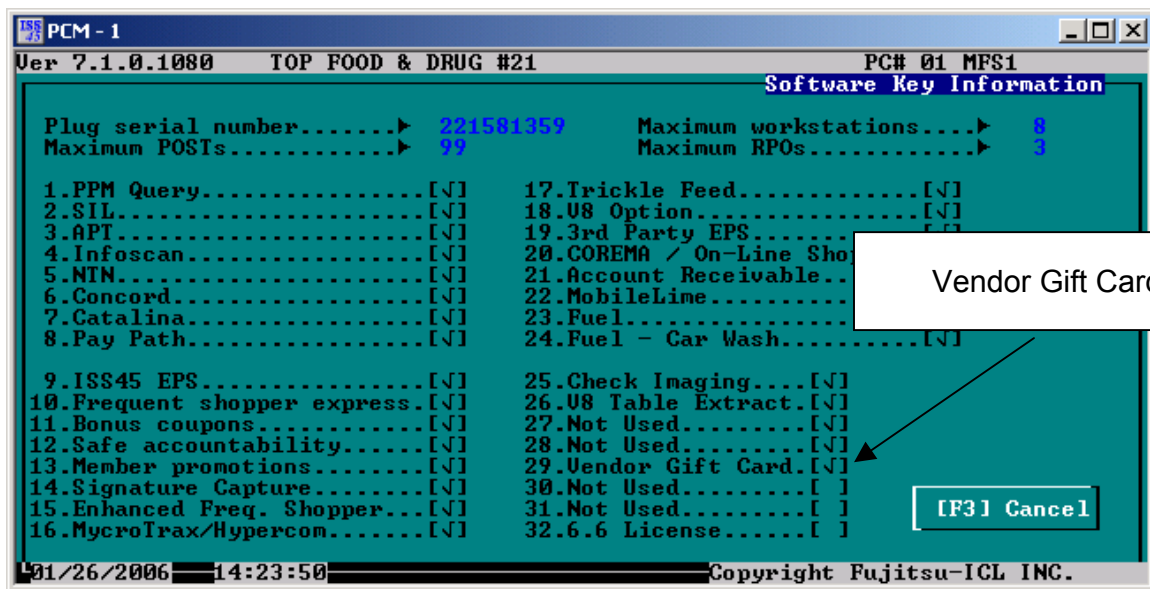
# POS Enhancements

## 7249 – Vendor Gift Cards Support

ISS45 now supports selling outside Vendor Gift Cards. For example, the XYZ Store chain may sell Gift Cards that can only be used specifically in the ABC Store chain. This option is controlled by a “Vendor Gift Card” setting on the HASP plug.

### New Software Key Flag

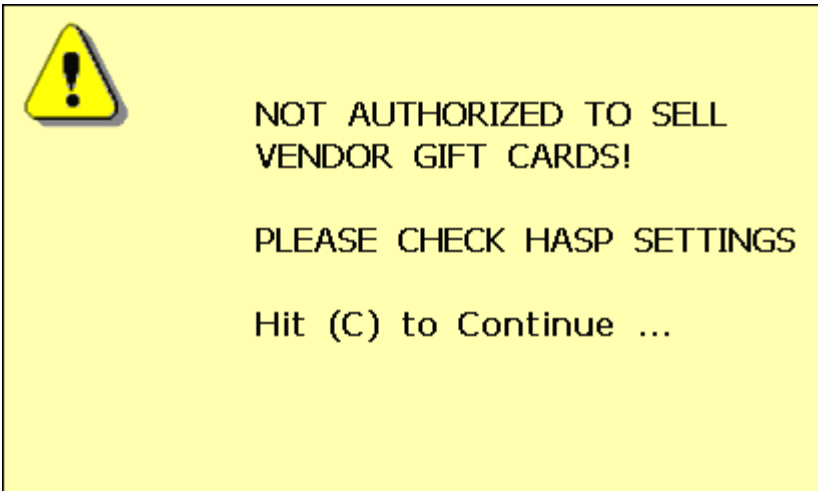
As part of this feature implementation, Flag ID #29 is now Vendor Gift Card Key within the Software Key Information Screen (6-1-12).



#### Note:

The TAC code sequence included in the activation request is setup in the terminal configuration of the MTX EPS host.

Using the UPC Code TAC sequence when the Flag is not set on the HASP will disable vendor gift card activation in the system, and will result in the following POS message:



**Note:**

If ISS45 is enabled for "Gift Card Activation After Tender", the error message will display on the POS at the time of activation (after the transaction is tendered but before it is finalized).

## 7662 – EAN 128 Gift Card Support (POS)

ISS45 now supports Gift Cards that contain EAN 128 barcodes, a high-density alphanumeric bar code that is capable of storing both the UPC # and Card Account #. Both fixed value (e.g. \$10.00, \$25.00, \$50.00, etc.) and variable value gift cards are supported.

Gift cards that contain EAN 128 barcodes can be sold and activated at the same time (rather than having to activate separately after scanning the purchased gift card's barcode). In addition, an individual gift card receipt for each gift card activated in a transaction is generated.

**Note:**

MicroTrax version 815.3 (and higher) is required to support EAN 128 Gift Cards.

Operationally at the POS, there are minor changes for the Gift Card selling and activation and for the return and deactivation processes. The POS will validate the EAN 128 Gift Card based on the gift card department range or PLU range settings.

If the cashier key-enters the Gift Card PLU number:

- And the Gift Card is validated using a PLU range, the card will be activated as it has previously.
- And the Gift Card is validated using a department range, the gift card will be activated using the “two pass” method, with a request made to scan the card at the pinpad.

If the cashier key scans the Gift Card:

- And the PLU is in either the PLU range or department range, it will be activated as an EAN 128 Gift Card
- And the PLU is not in either the PLU range or department range, the sale will not be allowed and the following error message will display.

**Note:**

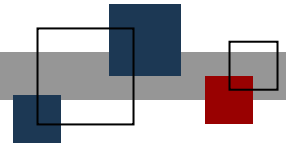
Set the Inhibit Qty/Repeat flag for gift cards in the PLU record to prevent the Quantity and Repeat POS functions from being used.

**Note:**

Processing fees are not sent to MicroTrax but are handled by linking the card to another PLU (similarly to bottle deposits).







**© StoreNext Retail Technologies LLC 2006**

StoreNext Retail Technologies LLC endeavors to ensure that the information in this document is correct and fairly stated but does not accept liability for any error or omission.

The development of StoreNext products and services is continuous and published information may not be up to date. It is important to check the current position with StoreNext. This document is not part of a contract or license save insofar as may be expressly agreed.