

Release Notes

Version 7.7.1

ISS45 Release Notes, Version 7.7.1

Date of Issue	Product Identification Number	Part Number	Brief Description
August 2001	45001/055	89000084	Initial release

**Copyright® Fujitsu Transaction Solutions Inc. 1995-2001
All rights reserved.**

This publication is protected by federal copyright law into any human or computer language in any form or by any means, electronic, mechanical, magnetic or manual. No part of this publication may be copied or distributed, stored in a retrieval system, or translated or otherwise, or disclosed to third parties without the express written permission of Fujitsu Transaction Solutions.

Fujitsu Transaction Solutions makes no representation or warranties with respect to the contents hereof and specifically disclaims any implied warranties of merchantability or fitness for a particular purpose. Fujitsu Transaction Solutions further reserves the right to revise this publication and to make changes from time to time in the contents hereof without obligation of Fujitsu Transaction Solutions to notify any person or organization of such revision or changes.

Fujitsu Transaction Solutions has prepared this manual for use by users, authorized third parties and personnel of Fujitsu Transaction Solutions as a guide to the proper installation, operation, customization and/or maintenance of Fujitsu Transaction Solutions equipment and software. The drawings and specifications contained herein are the property of Fujitsu Transaction Solutions.

Address comments and corrections to:

Fujitsu Transaction Solutions
ISS45 Program Director
2933 Bunker Hill Lane
Suite 101
Santa Clara, CA 95054

This manual is designed for placement in a Fujitsu binder that can be ordered separately from your Fujitsu sales representative or Fujitsu Order Entry. Indicate PIN 45007/003 or part number 80192818.

This sheet contains spine cards that can be used to identify the binder for a particular manual. Cut one of the cards along the dotted lines and insert it in the binder's spine pocket. Discard the remaining cards or save them for later use.

45001/055	45001/055	45001/055	45001/055	45001/055
ISS45	ISS45	ISS45	ISS45	ISS45
<i>Release Notes - Version 7.7.1</i>	<i>Release Notes - Version 7.7.1</i>	<i>Release Notes - Version 7.7.1</i>	<i>Release Notes - Version 7.7.1</i>	<i>Release Notes - Version 7.7.1</i>
FUJITSU	FUJITSU	FUJITSU	FUJITSU	FUJITSU

What's New?

- **Number of end-of-ticked coupons increased from 20 to 100.**
- **2 x 20 keyboard display can now function as cashier display.**
- **California split price option — can now set 3/\$1.00 to price at 33/34/33 as well as the 34/34/32 and 34/33/33 options.**
- **DEA Groups — new function for monitoring and limiting over-the-counter drug sales.**
- **Check endorsement code added for Epson 6000/Axihom758 with automated two-sided printing.**
- **Cashier Monitoring is now available on WinPoS from the ISS45 office.**
- **New Check Definition Files handles MICR across a variety of check types plus the ability to add new or previously unknown formats.**
- **Improved User Hooks (not documented in this manual) for Electronic Payments allows use of Gift Cards with Concord/BuyPa\$\$ system. See documentation supplied with the hook on the 7.7.1 CD-ROM under the /CONCORD_BACKOFFICE directory.**

New Back Office Parameters

The following parameters have been added to the system. Some of these are further detailed in the following pages.

General Post Parameters 1

Parameter	Description
MSU rounding option	Added new split price 33,34,33.

General Post Parameters 4

Parameter	Description
Allow manual weight	Gives the option to allow or disallow manual weight.

PLU Maintenance

Parameter	Description
DEA Groups Maintenance	DEA groups menu, gives the option to build new groups for limited quantity items, such as drugs.
DEA Groups	Select the DEA group to be attached the PLU.

Post Configuration Page 2

Parameter	Description
POS O/S type	Added a new type of POST – WinPOS. This parameter must be set for all WinPOS type of POSTs in order to enable the WinPOS monitoring feature from the Back office.

NOTE: This parameter will not affect the WinPOS operation if not set. It is recommended to set in the BO all the WinPOS lanes with the new parameter in order to accommodate future features as well as the monitoring.

Cashier Maintenance

Parameters	Description
WinPoS Monitoring	Use WinPoS Monitoring to view current online cashier activity on a chosen WinPoS terminal.

Coupon Parameters

Parameter	Description
Coupon Printing Maintenance	Increase the coupon numbers from 20 to 100.

Check – Definitions

Parameter	Description
New file on lane under WinPOS directory Check.def	WinPOS have the ability Handling With all Check types.

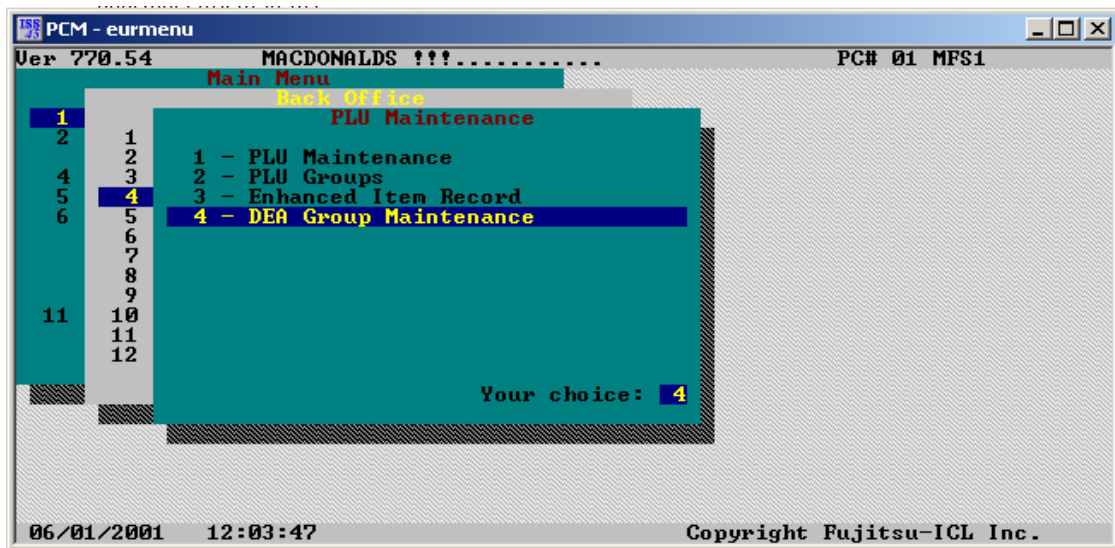
1. **Coupon Number Increased** – From 20 to 100.
In Coupon Printing Maintenance <6,1,5,6> increased the coupons available from 20 coupons to 100 using 0-99 as the coupon codes.

2. **2X20 Display** – Allow the 2x20 display to function as the main cashier display.
If 2x20 display is set in the Post Configuration the VGA screen can be used as the customer display and the 2x20 will be the cashier main display with menus functionality.
If the 2x20 flag in Post Configuration is not set you can still use the 2x20. In this case the VGA display will have the cashier functionalities and the 2x20 will show same info as the customer pole display.

3. **California Split Price** – New split is 33,34,33.
Added new split price (**MSU**) type. the new split price located in the same place in the Back-Office <6,1,2,1,1>. The drop down list has a 3rd entry - 33,34,33.

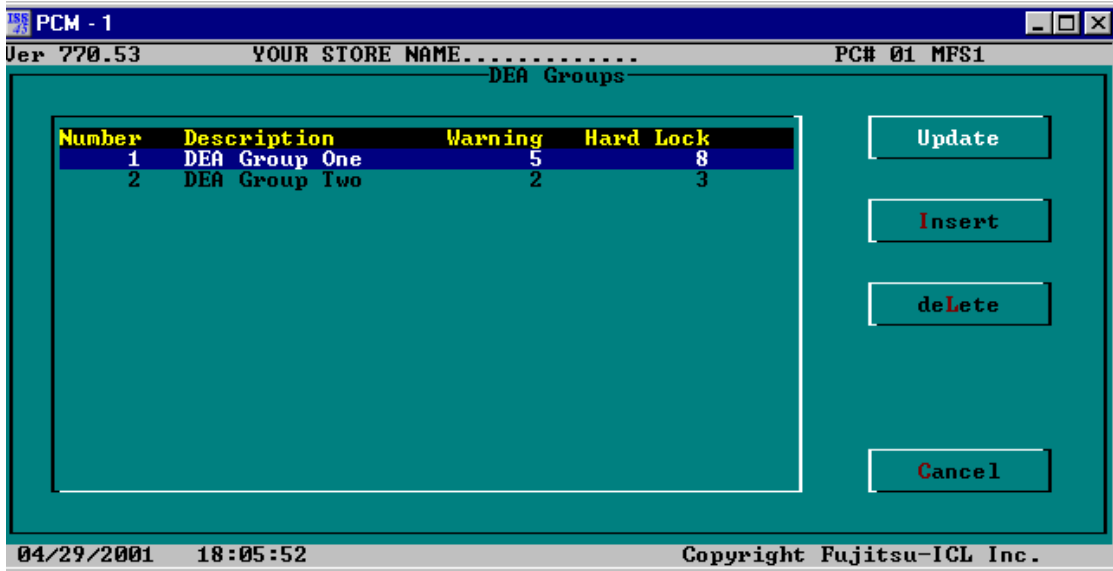
DEA Groups

1. Use this new feature to build DEA (Drug Enforcement Administration) groups.
2. The groups specify rules regarding quantities and limits on items sales. This is done to prevent purchase of illegal quantities of pharmaceutical.



Adding DEA Groups

3. Enter the new DEA menu entry under PLU maintenance.
4. Select Insert.



The DEA Groups dialog box appears.

PCM - 1

Ver 770.53 YOUR STORE NAME..... PC# 01 MFS1

DEA Groups Maintenance

Number.....>> 1 Description.....> DEA Group One
Warning.....> 5 Hard Lock.....> 8

PLU number	Description
601	INSULIN
602	XXX ANTIBIOTICS

[F2] Update
[F8] List
[F9] Prev
[F10] Next

04/29/2001 18:09:27 Copyright Fujitsu-ICL Inc.

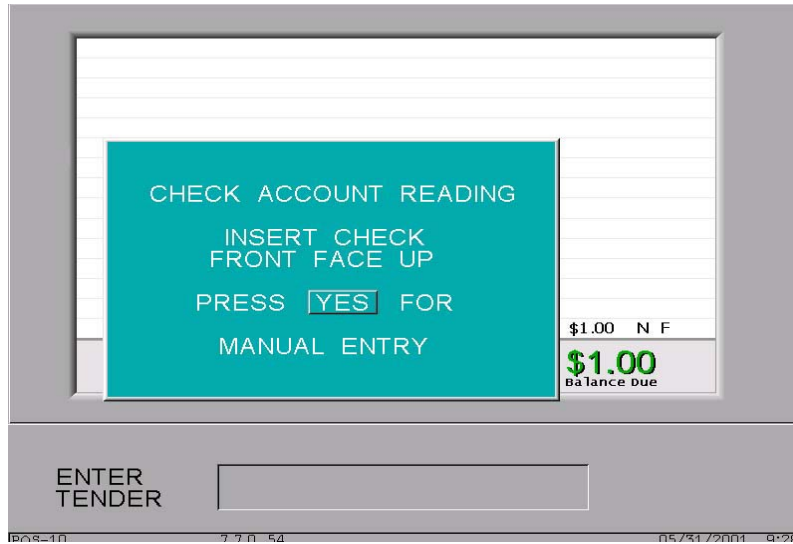
5. Enter the desired group number and description.
6. Specify a **warning** quantity. When the customer reaches this quantity, the cashier will get a warning on his monitor and it will also be printed on the receipt.
7. Specify the required **Hard Lock**. This is the maximum quantity of the group's items a customer may buy. If this limit is reached – the POST will decline selling any more of these items.
NOTE: The POST is counting all items in the ticket that belong to the same DEA group in order to decide if the limit is reached. The limit is not counted per-item.
8. Click Update to save.
9. Go to PLU Maintenance to link an item to the appropriate DEA group.
10. Once you have defined the DEA groups, go to PLU Maintenance to link group to a specific item.
11. You can attach one DEA group per item.



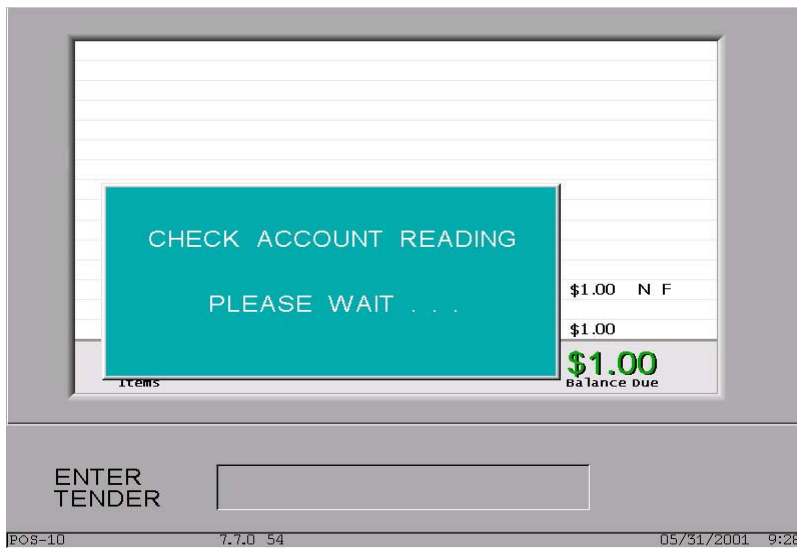
Check Endorsement on Epson6000/Axihom758 with Flip.

If using Epson 6000 or Axiohm 758 printers with the automated 2-sided printing features, 7.7.1 adds the ability to override the front-of-check printing when necessary.

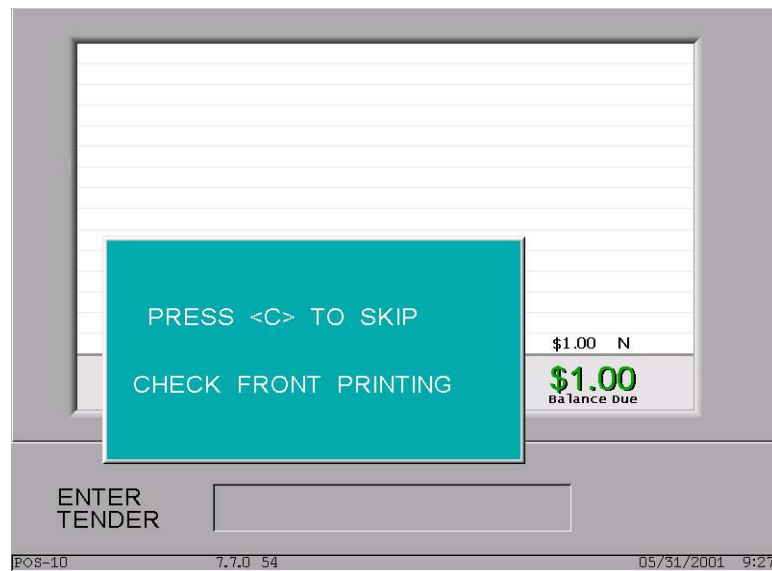
1. First the cashier will be asked to insert the check or to enter account number manually.



2. The printer will read the check account, number and routing. (If the cashier will chose to insert the check details manually it will skip this stage and go right to stage 3)



3. At this point the cashier will be prompted with the message:
“Press <C> to skip check front printing”
The cashier can choose to skip the check front printing by pressing the Clear button. Only the back endorsement will be printed.
If the cashier will not press the <C> button the printer will print on both sides of the check.



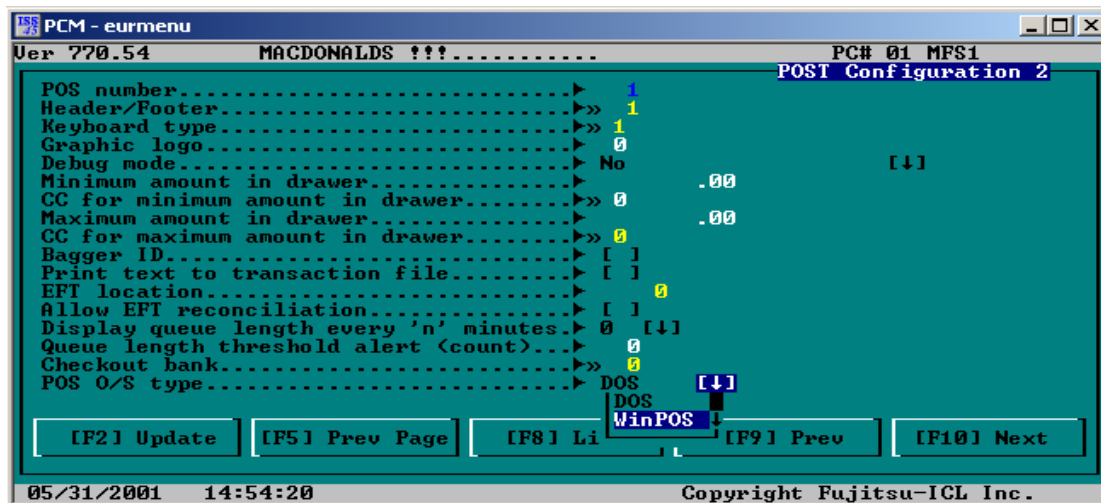
WinPoS Monitoring

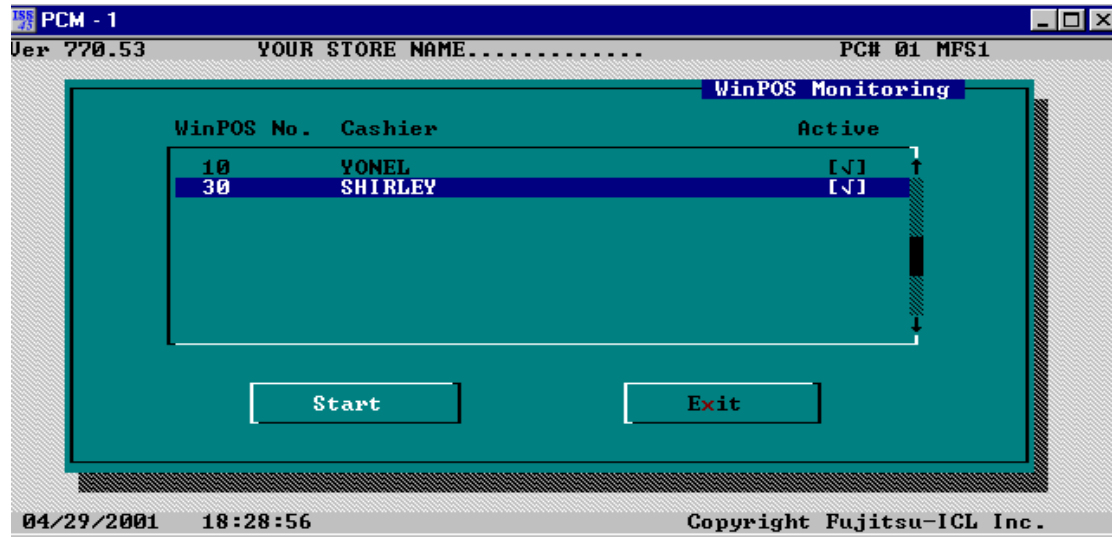
Use WinPoS Monitoring to view a working WinPoS lane and see the transactions currently being performed by the cashier.

This feature will work only with WinPOS lanes and only those that have the “WinPoS O/S” parameter set in the POST configuration.

1. From the Cashier Maintenance menu select “WinPoS Monitoring”. The POS List window appears.
2. Chose which WinPoS terminal you want to monitor by highlighting it, then click *Start*.

NOTE: Only cashiers that are marked active can be monitored.





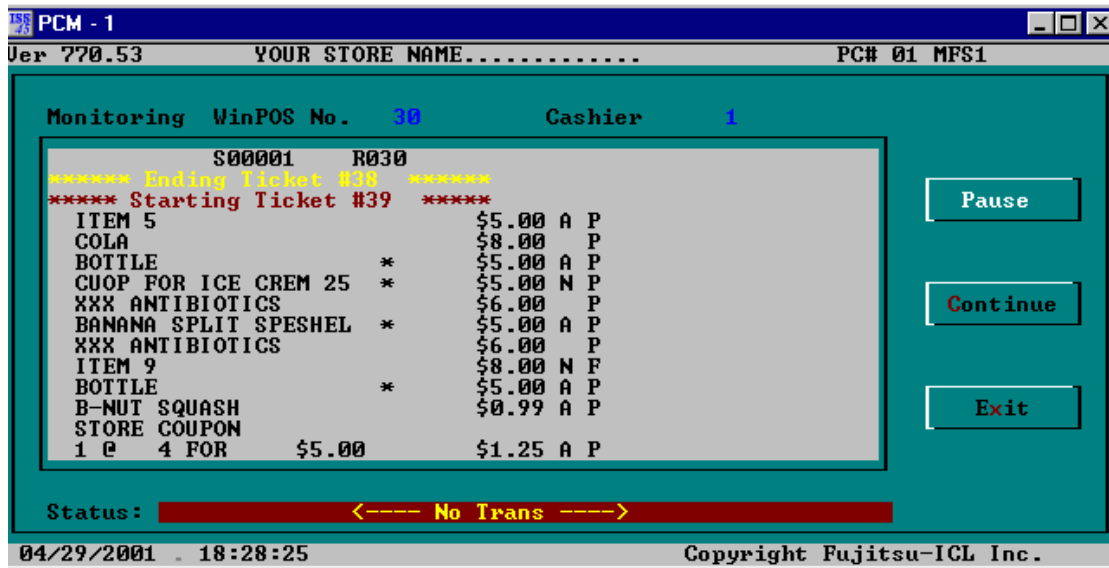
3. The WinPoS Monitoring screen appears. The current ticket in the lane can be seen scrolling up the screen.

3.1. Available options:

Pause – Pause current text scrolling.

Continue – Release the pause status.

Exit – Return to the previous page.



Check Definitions

New file added to the WinPoS check.def, the check.def file is a text file which include all the details about the magnetic check number format. During the transactions the WinPoS application is comparing the check data format with the information that in the check.def and if one or more formats were found the WinPoS application will use the first one, in case that the application didn't find the matching format the check will be rejected.

Check.def

Min	Max	Pos	Pos	Pos	Pos	Pos	Pos	Pos	Pos	Pos	Pos	Pos	ACNT	ROUT	NUMB	Remarks
----	----	-----	-----	-----	-----	-----	-----	-----	-----	-----	-----	-----	-----	-----	-----	-----
025	026	01T	11T	22O	000	000	000	000	000	000	000	000	12:21	02:10	23:26	
019	020	01T	11T	20O	000	000	000	000	000	000	000	000	12:19	02:10	00:00	
026	027	01T	11T	12O	23O	000	000	000	000	000	000	000	13:22	02:10	24:27	
024	025	01T	11T	25O	000	000	000	000	000	000	000	000	16:24	02:10	12:15	
026	027	01T	11T	16O	27O	000	000	000	000	000	000	000	17:26	02:10	12:15	
023	024	01T	11T	20O	000	000	000	000	000	000	000	000	12:19	02:10	21:24	
022	023	01T	11T	19O	000	000	000	000	000	000	000	000	12:18	02:10	20:23	
028	029	01T	11T	25O	000	000	000	000	000	000	000	000	12:24	02:10	26:29	
027	028	01T	11T	24O	000	000	000	000	000	000	000	000	12:23	02:10	25:28	
029	030	01T	11T	26O	000	000	000	000	000	000	000	000	12:25	02:10	27:30	
025	026	01T	11T	23O	000	000	000	000	000	000	000	000	12:22	02:10	24:26	
020	021	01T	11T	18O	000	000	000	000	000	000	000	000	12:17	02:10	19:21	
024	025	01T	11T	21O	000	000	000	000	000	000	000	000	12:20	02:10	22:25	
025	026	01T	11T	26O	000	000	000	000	000	000	000	000	16:25	02:10	12:15	

- Min – minimum check string length
- Max – maximum check string length
- POS – position of the special characters and their types (according to the table below). We made room for 10 special characters in a check string.
- ACCNT – [offset begin account]:[offset end account]

- ROUTR – [offset begin bank]:[offset end bank]
- NUMBR – [offset begin check num]:[offset end check num]

MICR	Character	Hex	Decimal	MICR	Character	Hex	Decimal
	NULL	0 0	0	0	0	3 0	4 8
	SP	2 0	3 2	1	1	3 1	4 9
	?	3 F	6 3	2	2	3 2	5 0
				3	3	3 3	5 1
T	T	5 4	8 4	4	4	3 4	5 2
A	A	4 1	6 5	5	5	3 5	5 3
O	O	4 F	7 9	6	6	3 6	5 4
D	D	4 4	6 8	7	7	3 7	5 5
				8	8	3 8	5 6
				9	9	3 9	5 7

© Fujitsu Transaction Solutions Inc. 1995-2001

Fujitsu Transaction Solutions Inc. endeavors to ensure that the information in this document is correct and fairly stated but does not accept liability for any error or omission.

The development of Fujitsu Transaction Solutions products and services is continuous and published information may not be up to date. It is important to check the current position with Fujitsu Transaction Solutions. This document is not part of a contract or license save insofar as may be expressly agreed.

**Fujitsu Transaction Solutions Inc.
2933 Bunker Hill Lane, #101
Santa Clara, CA 95054**

**Part 89000084
PIN 45001/055**