

A vertical column of five squares of varying shades of blue and red, used as a decorative element for the title.

*Acer Altos G540 Installation Guide
for ISS45 V8 with
Windows 2003 Server
SQL 2000*



Acer Altos G540 Installation Guide

Date of Issue	Product Identification Number	Part Number	Brief Description
May 2007	45001/071	89000446	Initial Release
May 2007	45001/071	89000452	Update

**© Copyright StoreNext Retail Technologies LLC 1995-2008
All rights reserved**

This publication is protected by federal copyright law. No part of this publication may be reproduced or transmitted into any human or computer language in any form or by any means, stored in a retrieval system, transmitted, redistributed, translated or disclosed to third parties, or de-compiled in any way including, but not limited to, photocopy, photograph, electronic, mechanical, magnetic or manual without the express written permission of StoreNext Retail Technologies LLC or its licensors, if any. This document, notwithstanding the above, may be distributed in electronic or printed form to personnel who are employed by either (1) a StoreNext customer of the subject system of this document or (2) personnel from an authorized StoreNext dealer of the subject system of this document. All copies, so distributed and/or so authorized, shall contain a full copy of this copyright notice.

StoreNext Retail Technologies LLC endeavors to ensure that the information in this document is correct and fairly stated but does not accept liability for any error or omission. StoreNext Retail Technologies LLC makes no representation or warranties with respect to the contents hereof, and specifically disclaims any implied warranties of merchantability or fitness for a particular purpose or non-infringement. No commitments by StoreNext or its suppliers are made from this documentation which is provided for information only.

Development of StoreNext products and documentation is continuous: StoreNext Retail Technologies LLC reserves the right to revise this publication and to make changes from time to time in the contents hereof or in the products herein described or discussed without notice and without any obligation of StoreNext Retail Technologies LLC to notify any person or organization of such revision or changes. Information published in this document will likely become obsolete over time and it is recommended that users regularly check for updates and newer versions.

StoreNext Retail Technologies LLC has prepared this manual for use by users, authorized third parties and personnel of StoreNext Retail Technologies LLC as a guide to the proper installation, operation, customization and/or maintenance of StoreNext Retail Technologies LLC equipment and software. The drawings and specifications contained herein are the property of StoreNext Retail Technologies LLC and/or its licensors.

Third-party products, services, or company names referenced in this document may be trademarked or copyrighted by their respective owners, and are for identification purposes only.

Copyrights, trademarks and license agreements shall be governed and construed in accordance with the laws of the State of Texas and the Federal Arbitration Act, and shall benefit StoreNext, its successors, and assigns.

Address comments and corrections to:

StoreNext Retail Technologies LLC
Software Program Director
6100 Tennyson Parkway
Suite 130
Plano, Texas 75024

TABLE of CONTENTS

0.	Document Control.....	c
0.1.	Distribution List — As per manuals	c
0.2.	Changes Forecast	c
0.3.	Change History	c
1.	Windows Server 2003 Installation.....	1
1.1.	Starting the Acer G540E-50149 for the First Time	1
1.2.	Windows Setup	5
1.3.	Partitioning for Drive D	6
1.4.	Disabling DEP (Data Execution Prevention).....	7
2.	Loading the MegaRAID Storage Manager Software	7
2.1.	MegaRAID Storage Manager Installation	7
3.	SQL Server 2000 Installation	8
3.1.	SQL Installation	8
3.2.	SQL Server 2000 SP3a Installation	9
3.3.	Register SQL Server	10
4.	Managing Your Server.....	10
4.1.	Starting Manage Your Server	10
5.	Go to the ISS45 Application Documentation for completing Server Installation	10
	Appendix A (Device Manager Screen).....	11

0. Document Control

0.1. Distribution List — As per manuals

0.2. Changes Forecast

This document will be updated as new configurations and corrections are made available

0.3. Change History

Issue 1: This is the initial release of this document.

Issue 2: Added section 1.4 Disabling DEP (Data Execution Prevention)

Note: The G540E-50149 that was received from Acer came without any software loaded. This installation is being written for a new system without any staging. If your system has been staged then you can go to the point in this document you need to continue from.

1. Windows Server 2003 Installation

CD's shipping with the G540E-50149

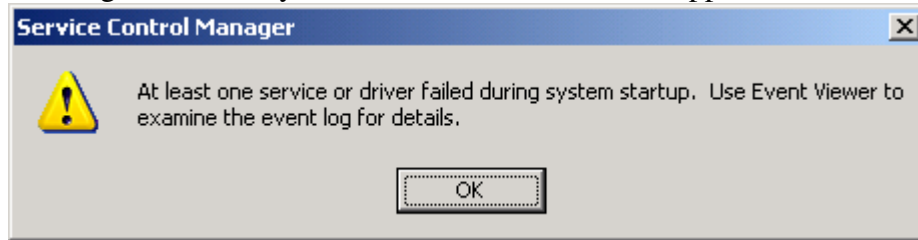
- Acer EasyBuild v7.1 build 650 P/N: SR.50600.007
 - Server Manager CD v.7.1 Build 600
 - Acer EasyBUILD v7.1 Build 650
- Microsoft Windows Server 2003 R2

1.1. Starting the Acer G540E-50149 for the First Time

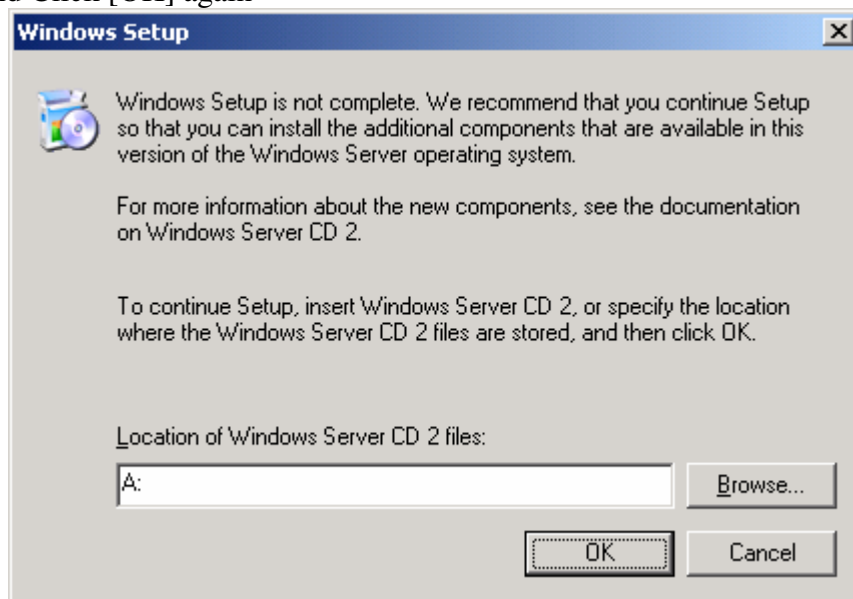
- 1.1.1. Connect the USB PC keyboard, USB mouse, monitor, network cable and power supply cable
- 1.1.2. Power on the G540E-50149 Raid Server using the front power button behind the locked door
- 1.1.3. You will see the following messages on the screen during power up
 - Press <F2> to enter SETUP, <F10> for Boot Menu
- 1.1.4. Wait for the message following the MegaRAID SAS 8708ELP Press <Ctrl> <H> for WebBIOS
- 1.1.5. Press <Ctrl> <H>
- 1.1.6. Click [Start] in the adapter selection menu
- 1.1.7. Click the line for [Configuration Wizard]
- 1.1.8. Click the bullet for [New Configuration] and then click [Next]
- 1.1.9. Click [Yes] to "This is a Destructive Operation"
- 1.1.10. Click the bullet [Custom Configuration] and then click [Next]
- 1.1.11. Click on the first disk and click [AddtoArray]
- 1.1.12. Click on the second disk and click [AddtoArray]
- 1.1.13. Click on the third disk and click [AddtoArray]
- 1.1.14. DO NOT click on the fourth disk as this will be your hot spare
- 1.1.15. Click [Accept DG] and click [Next]
- 1.1.16. Click [Add to Span] and then click [Next]
- 1.1.17. Click the dropdown for RAID Level 5
- 1.1.18. Click [Accept] and then click [Next]
- 1.1.19. Click [Accept] again at the next screen
- 1.1.20. Click [Yes] to save the configuration
- 1.1.21. Click [Yes] to initialize
- 1.1.22. Click on the [Home] icon
- 1.1.23. Click on the fourth disk in the Physical Drives window
- 1.1.24. Click on the bullet [Make Global HSP] and click [Go]
- 1.1.25. Click on the [Home] icon
- 1.1.26. Click [Exit] and click [Yes] to "Exit Application"

- 1.1.27. Put the Acer EasyBUILD v7.1 build 650 CD into the DVD ROM drive
- 1.1.28. Reboot your system
- 1.1.29. Press <F2> to enter SETUP
- 1.1.30. Go to the Boot tab
- 1.1.31. Ensure that the first three boot devices are in the following order
 - Legacy Floppy Drives
 - IDE 4: HL-DT-ST DVDROM *****
 - PCI SCSI ***
- 1.1.32. Press <F10> to Save and Exit
- 1.1.33. Select [Yes] to Save configuration changes and press [Enter]
- 1.1.34. The Acer EasyBUILD CD will startup that you put in at step 1.1.27 above
- 1.1.35. Click the bullet for [English] and then click [Next]
- 1.1.36. Click [Install OS]
- 1.1.37. Click down one selection to move the highlight from [Windows Server 2003 R2 Editions], then click [Windows Server 2003 R2 Editions] again and then click [Next]
- 1.1.38. Click [Next] at the notice screen
- 1.1.39. Fill in the form
- 1.1.40. Make sure you have the "Product Key Using Acer ROK UNCHECKED" (The product key is on the side of the Acer that you need to type in) and click [Next]
- 1.1.41. Fill in the form selecting workgroup and naming your workgroup name, Per server, count 5 then click [Next]
- 1.1.42. Leave Get IP from DHCP server (The real IP address will be setup later in the installation) and click [Next]
- 1.1.43. Double click the number under size(MB) and create a 34000 size (approximately 1/2 disk) (***)You may have to double click a few times to open the window to edit) leave NTFS and then click [Next]
- 1.1.44. Uncheck Internet Information services and then click [Next]
- 1.1.45. Click finish
- 1.1.46. Click [Yes] to format
- 1.1.47. Press [Enter] to the message "The Hard Disk will be formatted"
- 1.1.48. The "EasyBUILD" CD will be automatically ejected and you will follow the directions on the screen to put in the "Windows Server 2003 R2 Edition CD 1 and press [Enter]
- 1.1.49. Files will be copied at the point of the installation from the CD
- 1.1.50. The "Windows Server 2003 R2 Edition" CD will be automatically ejected and you will follow the directions on the screen to remove the CD and press [Enter] to reboot
- 1.1.51. The installation will continue and the system will automatically restart
- 1.1.52. Windows Server 2003 starts up and does a fat32 to NTFS conversion and will automatically restart again
- 1.1.53. The installation will continue installing Windows Server 2003 when it comes back up and will automatically restart when finished
- 1.1.54. The Windows Sign on screen appears
 - Sign on as the Administrator with the password hyou created earlier to continue setting up the Computer.

- 1.1.55. During the sign on, you will see the following error which is ok because you have no PS2 Keyboard and PS2 Mouse connected. Your system should be using the USB Keyboard and USB Mouse that shipped with it.

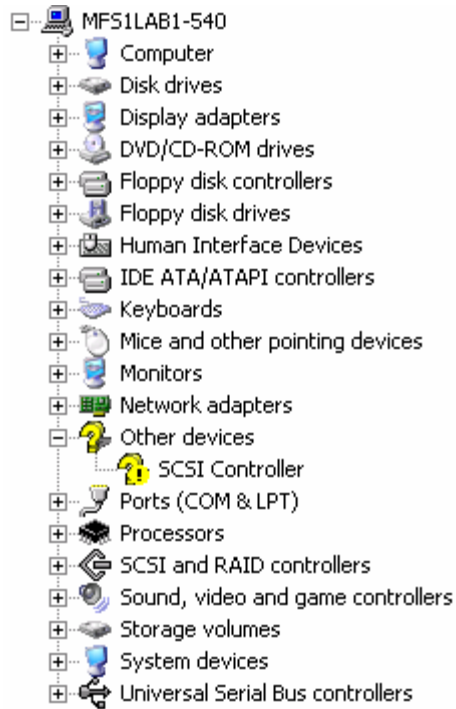


- 1.1.56. The following will be the next popup you see. Put in the Windows Server CD 2, Browse to the DVD ROM drive and click to highlight it, click [OK] and Click [OK] again



- 1.1.57. Click [Next] at the Windows Server 2003 R2 Setup Wizard screen
1.1.58. Click [Next] at the Setup Summary screen
1.1.59. Click [Finish] when the install completes
1.1.60. You will also see an "EasyBUILD Post-Setup" screen with hardware referenced that is not on your system so close the window by clicking the [X] in the top right of the window
1.1.61. The "Windows Server Post-Setup Security Updates" screen appears
1.1.62. If you are not using DHCP for your network address then you do not have a network connection at this point. You need to go to the Network set up in step 1.2.2 and set up your network address for the Internet Service Provider you use to get the critical updates. Complete the steps in this window and click [Finish] when done. Or click [Finish] and do these steps later.
NOTE1: DO NOT INSTALL THE UPDATE FOR SERVICE PACK 2 AS THE VALIDATION HAS NOT BEEN COMPLETED FOR ALL THE APPLICATIONS AT THIS POINT IN TIME.
NOTE2: DO NOT INSTALL INTERNET EXPLORER 7. ONLY INTERNET EXPLORER 6 IS CERTIFIED WITH ISS45.

- 1.1.63. The "Manage Your Server" window opens after you click [Finish] on the step above. The minimum recommendation is to set up your Server as a File Server.
 - 1.1.63.1. Click "Add or remove a roll"
 - 1.1.63.2. Click Next at Preliminary steps
 - 1.1.63.3. Place the bullet on "Custom configuration" and click [Next]
 - 1.1.63.4. Highlight File Server and click [Next]
 - 1.1.63.5. Click [Next] at the "Summary of selections" screen
 - 1.1.63.6. Click [Next] at the "Add File Server Roll Wizard" screen
 - 1.1.63.7. Do not select any additional components and click [Next]
 - 1.1.63.8. Put in the Windows Server 2003 R2 disk 2 CD and click [OK]
 - 1.1.63.9. Browse to the d:\CMPNENTS\R2 folder
 - 1.1.63.10. Click [open]
 - 1.1.63.11. Click [OK]
 - 1.1.63.12. After the copy you are again prompted to insert Windows Server 2003 R2 disk 2 CD
 - 1.1.63.13. Click [OK]
 - 1.1.63.14. Browse to the d:\CMPNENTS\R2 folder
 - 1.1.63.15. Click [open]
 - 1.1.63.16. Click [OK]
 - 1.1.63.17. The installation at this point will take approximately 2 minutes as it is installing .NET Framework 2.0
 - 1.1.63.18. Restart the computer at the prompt by clicking [Yes]
- 1.1.64. The "Manage Your Server" window opens again after the restart
- 1.1.65. Click the box "Don't display this page at logon" and close the window by clicking the [X] in the top right of the window
- 1.1.66. Put the Acer EasyBUILD V7.1 build 650 into the DVD ROM drive
- 1.1.67. Click [Exit] at the screen that pops up
- 1.1.68. Go to device manager by doing the following
 - 1.1.68.1. Click [Start]
 - 1.1.68.2. Click [Control Panel]
 - 1.1.68.3. Click [System]
 - 1.1.68.4. Click the [Hardware] tab
 - 1.1.68.5. Click [Device Manager]
- 1.1.69. You will see the following under other devices SCSI Controller



1.1.70. Double click the SCSI Controller

1.1.71. Click on the driver tab

1.1.72. Click update driver

1.1.73. Click the bullet [No, not this time] and click [Next]

1.1.74. Click [install from a list or specific location [advanced]] and click [Next]

1.1.75. Click the bullet [Search for the best driver in these locations]

1.1.76. Uncheck the box "search removable media (floppy, CD ROM ...)"

1.1.77. Check the box "Include this location in the search"

1.1.78. Browse to the Acer DVDROM\disk\g540\onboard\sas\ws2k3 folder and click [OK]

1.1.79. Click [Next]

1.1.80. Select the "LSI Adaptor,SAS 3000 series, 8-port with 1068 - StorPort Version 1.21.28.0 LSI Logic d:\disk\g540\onboard\sas\ws2k3\lsi_sas.inf"

1.1.81. Click [Next]

Note: It can take up to a minute as it is installing the driver

1.1.82. Click [Finish] when the driver install completes

1.1.83. Close all the open windows

1.1.84. ICON 30 days to activate windows will show indicating the need to activate the Windows software.

Note: You have 30 days to activate this software with Microsoft.

1.2. Windows Setup

1.2.1. SETUP THE WORKGROUP

1.2.1.1. Click Start / Control Panel / System

1.2.1.2. Click the Computer Name Tab

- 1.2.1.3. Give your computer a description then click the Change button
- 1.2.1.4. Check the Computer name and change if required
- 1.2.1.5. Check the member of Workgroup and change the name of the workgroup if required
- 1.2.1.6. Click OK or Cancel depending on your input above
- 1.2.1.7. Click the OK on the System Properties screen to close and exit

1.2.2. SETUP NETWORK

Note: There are two network connections on the G540. Disable one of the connections through the Device Manager if you do not intend to use it.

- 1.2.2.1. Click Start / Control Panel / Network Connections / Local Area Connection or Local Area Connection 2
- 1.2.2.2. Setup your IP address for TCP/IP and any other information that you require like Gateway, DNS for your system if going to the outside world

1.2.3. SETUP DISPLAY RESOLUTION AND POWER MODE

- 1.2.3.1. Start / Control Panel / Display
- 1.2.3.2. Click the Settings Tab
- 1.2.3.3. Set the display to 800 by 600 Medium (16 bit)
- 1.2.3.4. Click the Screen Saver Tab and change to None if you do not want a screen saver to start
- 1.2.3.5. Click the Power button in this same window and change the power scheme to Presentation so that the monitor and the system will not go to standby
- 1.2.3.6. Close all the open windows

1.3. Partitioning for Drive D

1.3.1. Using Disk Management

- 1.3.1.1. Start / Program Files / Administrative Tools / Computer Management
- 1.3.1.2. Click Disk Management
- 1.3.1.3. Right Click CD ROM 0 and edit to change it's drive letter to z: (this is just a suggestion since it is installed as drive D:)
- 1.3.1.4. Right click the unallocated space (approx. 33.85 GB) and then New Partition
- 1.3.1.5. The Wizard starts up
- 1.3.1.6. Click on Primary partition and Next
- 1.3.1.7. Select the size of the D: drive you want. (34663 MB is used in this example)
- 1.3.1.8. Click Next
- 1.3.1.9. Assign Drive letter D: and click Next

- 1.3.1.10. Format the partition with NTFS and select Next
- 1.3.1.11. Click Finish and format starts
- 1.3.1.12. Close all the open windows when the format is complete

1.4. Disabling DEP (Data Execution Prevention)

Note: The user must change the entry in the boot.ini file to indicate **/noexecute=AlwaysOff** to disable DEP (Data Execution Prevention) so that existing software can work with the newer CPU

1.4.1. Steps to disable DEP

- 1.4.1.1. Click Start on the desktop then Control Panel | System
- 1.4.1.2. Click the Advanced tab
- 1.4.1.3. Click Settings in the Startup and Recovery section
- 1.4.1.4. Click edit to edit the startup options
- 1.4.1.5. Change the /noexecute to say /noexecute=AlwaysOff
- 1.4.1.6. Save the file and exit
- 1.4.1.7. Close all the open windows

Note: If you are connecting to the Internet, Virus Protection is suggested for your protection

2. Loading the MegaRAID Storage Manager Software

2.1. MegaRAID Storage Manager Installation

- 2.1.1. Put the Acer EasyBUILD V7.1 build 650 CD into the DVD-ROM drive
- 2.1.2. The License Agreement screen appears. Click [Accept]
- 2.1.3. Open Utilities | Altos G540 | LSI Logic MegaRAID SAS 8708ELP
- 2.1.4. Click to highlight MegaRAID Storage Manager[Windows Server 2003]
- 2.1.5. Click [Setup] on the bottom of the screen
- 2.1.6. The MegaRAID Storage Manager v2.07-00 – Install Shield window opens
- 2.1.7. Click [Next]
- 2.1.8. Click the bullet [I accept the terms in the license agreement] and click [Next]
- 2.1.9. Choose who will use this application and click [Next] (We chose Only the current user [Administrator] for our installation)
 - All users
 - Only the current user [Administrator]
- 2.1.10. Click [Next] to the destination folder screen
- 2.1.11. Choose your setup type and click [Next] (We chose Standalone for our installation)
 - Complete
 - Client
 - Server
 - Standalone

- 2.1.12. Click [Install]
- 2.1.13. Click [Finish]
- 2.1.14. Click the MegaRAID Storage Manager ICON on the desktop to view your MegaRAID Storage Manager application (you will need to sign on as the administrator with password if installed that way above in step 2.1.9)

3. SQL Server 2000 Installation

3.1. SQL Installation

- 3.1.1. Insert SQL Server 2000 CD in CD-ROM Drive (autorun)
- 3.1.2. At *SQL Server 2000* screen click *SQL SERVER 2000 Components*
- 3.1.3. At next screen click *INSTALL DATABASE SERVER* (wait 30 sec)
- Note: The next screen that may pop up shows that SQL Server 2000 sp2 and below is not supported by this version of Windows**
- 3.1.4. Click Continue to run the installation program. (SP3a will be applied for Windows Server 2003 support later in this document)
- 3.1.5. At Welcome click NEXT
- 3.1.6. At Computer Name put • Local Computer, click NEXT
- 3.1.7. At Installation Selection put • Create a new instance..., click NEXT
- 3.1.8. At User Information key in Name and Company, click NEXT
- 3.1.9. At Software License Agreement click YES to confirm
- 3.1.10. If required at CD-Key, key in 25 char. ID, click NEXT
- 3.1.11. At Installation Definition put • Server and Client Tools, click NEXT
- 3.1.12. At Instance Name put ✓ Default, click NEXT
- 3.1.13. At Setup Type, put • on Custom Install
- 3.1.14. Change destination folders for both Program and Data files:
- 3.1.15. At **EACH** path click Browse, change C:\PROG... to **D:**, click OK
- Note: This process creates the directory D:\MSSQL**
- 3.1.16. then at *Setup Type* click *NEXT*
- 3.1.17. At *Select Components* click *NEXT*
- 3.1.18. At *Services Accounts* put • Customize settings
 - 3.1.18.1. In *Services* put • SQL Server
 - 3.1.18.1.1. In *Service Settings* put • Use a Domain User account
 - 3.1.18.1.2. In Username: key **Administrator** (or accept default)
 - 3.1.18.1.3. In Password: key **(this is your administrators password)**
 - 3.1.18.1.4. In Domain: key **(server name)** (or accept default)
 - 3.1.18.1.5. Put ✓ Auto Start Service
 - 3.1.18.2. In *Services* put • SQL Server Agent
 - 3.1.18.2.1. In *Service Settings* put • Use a Domain User account
 - 3.1.18.2.2. In Username: key **Administrator** (or accept default)
 - 3.1.18.2.3. In Password: key **(this is your administrators password)**
 - 3.1.18.2.4. In Domain: key **(server name)** (or accept default)
 - 3.1.18.2.5. Put ✓ Auto Start Service, click *NEXT*, at *Setup* click *OK*
 - 3.1.18.3. Click NEXT

- 3.1.18.4. At *Authentication Mode* put • Mixed Mode, put ✓ Blank Password, click *NEXT*
- 3.1.18.5. At *Collation Settings* put • SQL Collations
- 3.1.18.6. Highlight: **Binary order, for use with the 850(Multilingual) Character set**
- 3.1.18.7. Click *NEXT*
- 3.1.18.8. At *Network Libraries* remove ✓ from TCP/IP Sockets, then click *NEXT*
- 3.1.18.9. At *Start Copying Files* click *NEXT*
- 3.1.18.10. At *Choose Licensing Mode*, in *Licensing Mode* put • per Seat,
- 3.1.18.11. key in your purchased licenses (example **5**) in device box, click *CONTINUE*
- 3.1.18.12. Installs programs (8-9 min)
- 3.1.18.13. Configures selections (2-3 min)
- 3.1.18.14. At *SetupComplete* click *FINISH* to exit
- 3.1.18.15. Remove CD then at Desktop reboot server

3.2. SQL Server 2000 SP3a Installation

- 3.2.1. Insert ISS45 Version 8 CD which contains SQL Server 2000 SP3a in CD-ROM drive
- 3.2.2. Locate the file sql2ksp3.exe on the CD (The file should be in the folder SQL2000SP3A)
- 3.2.3. Double click the file to run
- 3.2.4. This brings up a window asking where to extract the files
- 3.2.5. Use the default (C:\sql2ksp3) and select Finish
- Note: The specified output folder does not exist create it message appears**
- 3.2.6. Select Yes
- Note: The package has been delivered successfully message pops up**
- 3.2.7. Select OK
- Note: Run the SP3a upgrade by following the steps below**
- 3.2.8. Start / Run and browse to (C:\sql2k3\setup.bat)
- 3.2.9. Select Open
- 3.2.10. This selects the file and takes you back to the Run screen with the correct information displayed
- 3.2.11. Select OK
- 3.2.12. At *Welcome* click *NEXT*
- 3.2.13. At *Software License...*, click *YES*
- 3.2.14. At *Instance Name* leave ✓ Default, click *NEXT*
- 3.2.15. At *Connect to Server* put • SQL Server Authentication..., click *NEXT*
- 3.2.16. At *SA Password Warning Screen* put • Ignore the security threat warning, leave the password blank. Click OK
- 3.2.17. Check the box *Upgrade Microsoft Search and apply SQL Server 2000 SP3(required)*. Click *Continue*
- 3.2.18. At *error reporting* click *OK*
- 3.2.19. At *Start Copying Files* click *NEXT* (8-10 min.)

- 3.2.20. At the end of the upgrade, click OK
- 3.2.21. At Setup Complete screen, click Finish
- 3.2.22. Close any opened windows then at Desktop reboot server

3.3. Register SQL Server

- 3.3.1. START / All PROGRAMS / Microsoft SQL SERVER / ENTERPRISE MANAGER
- 3.3.2. In the left window, open Microsoft *SQL Servers*
- 3.3.3. *In the left window, left click on SQL Server Group*
- 3.3.4. *In the right window, right click on the SQL Server (default name Local)*
- 3.3.5. *Edit SQL Server registration properties*
- 3.3.6. *On General screen, check the box for Use SQL Server authentication*
- 3.3.7. Login Name: key **sa**, leave password blank click *OK*
- Note: If you get: WARNING – The client and server codepages... click OK ,**
- 3.3.8. Exit Enterprise Manager
- 3.3.9. Restart the Computer

4. Managing Your Server

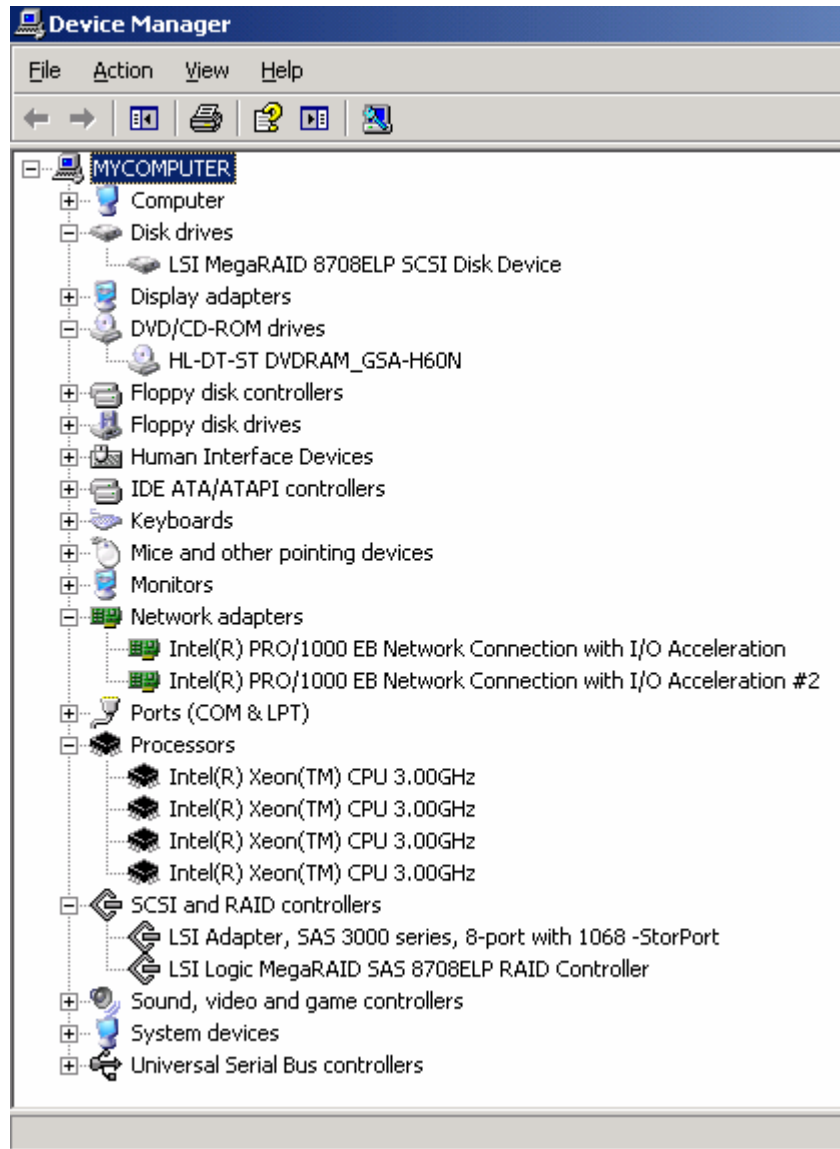
Note: The following steps perform the operation to share the Backup directory in the D:\MSSQL directory

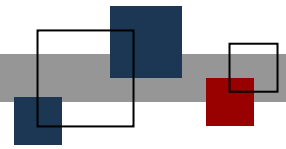
4.1. Starting Manage Your Server

- 4.1.1. Start / Administrative Tools / Manage your server
- 4.1.2. Click add shared folders
- 4.1.3. The Share a folder wizard starts
- 4.1.4. Click Next
- 4.1.5. Browse and share D:\MSSQL\Backup folder
- 4.1.6. Click Next and Next again
- 4.1.7. Place the bullet on Administrators have full access; other users have read-only access
- 4.1.8. Click Finish
- 4.1.9. Click Close
- 4.1.10. Close the Manager your server window

5. Go to the ISS45 Application Documentation for completing Server Installation

Appendix A (Device Manager Screen)





© StoreNext Retail Technologies LLC 2006

StoreNext Retail Technologies LLC endeavors to ensure that the information in this document is correct and fairly stated but does not accept liability for any error or omission.

The development of StoreNext products and services is continuous and published information may not be up to date. It is important to check the current position with StoreNext. This document is not part of a contract or license save insofar as may be expressly agreed.