

ISS  
45

FUJITSU



*ISS45 Color Printing*

## ISS45 Color Printing

<b>Date of Issue</b>	<b>Product Identification Number</b>	<b>Part Number</b>	<b>Brief Description</b>
December 2001	45001/060	89000093	Initial release

**Copyright® Fujitsu Transaction Solutions Inc. 1995-2001  
All rights reserved.**

This publication is protected by federal copyright law into any human or computer language in any form or by any means, electronic, mechanical, magnetic or manual. No part of this publication may be copied or distributed, stored in a retrieval system, or translated or otherwise, or disclosed to third parties without the express written permission of Fujitsu Transaction Solutions.

Fujitsu Transaction Solutions makes no representation or warranties with respect to the contents hereof and specifically disclaims any implied warranties of merchantability or fitness for a particular purpose. Fujitsu Transaction Solutions further reserves the right to revise this publication and to make changes from time to time in the contents hereof without obligation of Fujitsu Transaction Solutions to notify any person or organization of such revision or changes.

Fujitsu Transaction Solutions has prepared this manual for use by users, authorized third parties and personnel of Fujitsu Transaction Solutions as a guide to the proper installation, operation, customization and/or maintenance of Fujitsu Transaction Solutions equipment and software. The drawings and specifications contained herein are the property of Fujitsu Transaction Solutions.

Address comments and corrections to:

Fujitsu Transaction Solutions  
ISS45 Program Director  
2933 Bunker Hill Lane  
Suite 101  
Santa Clara, CA 95054

This documentation is designed for placement in a Fujitsu binder that can be ordered separately. To order the binder, contact your sales representative. Indicate PIN 45007/002 and/or part number 80192817.

This sheet contains spine cards that can be used to identify the binder for the appropriate documentation. Cut one of the cards along the dotted lines and insert it in the binder's spine pocket. Discard the remaining cards or save them for later use.

 <p><b>ISS45</b></p> <p><b>FUJITSU</b></p> <p><i>Technical Reference Set</i></p> <p>45001/003</p>	 <p><b>ISS45</b></p> <p><b>FUJITSU</b></p> <p><i>ISS45 Color Printing</i></p> <p>45001/060</p>
---	---



## **2 Color PoS**

# **Fujitsu DT50II and Epson TM-H6000II**

---

---

### **Contents:**

<b>1</b>	<b>Parameter Setup</b> .....	<b>2</b>
1.1	On MFS1:.....	2
1.2	On POST(s):.....	2
<b>2</b>	<b>Printer Installation/Setup</b> .....	<b>2</b>
2.1	Verify printer settings: .....	2
<b>3</b>	<b>Presentation Manager (PPM) Setup print red:</b> .....	<b>3</b>
3.1	Prepare POSMENU.QDX file for Updates: .....	3
3.2	Setup POSMENU.QDX Parameters .....	3
3.3	Steps to print specific functions in red. ....	5
3.3.1	Sample process to print in red [SALE_SUBT (Item Void) line].....	6
<b>4</b>	<b>Load POSMENU.QDX changes to POST(s)</b> .....	<b>9</b>
<b>A</b>	<b>Change from Color to Monochrome Printing</b> .....	<b>10</b>



- This supplemental guide provides ISS45 specialists with how to use the Fujitsu DT50II / Epson H6000II (Two color thermal receipt printer) attached to lane with ISS45 WinPoS-V7 Application.
- The Fujitsu DT50II / Epson H6000II provides two colors on receipt, black and red.
- The following procedures gives comprehensive explanation of how to set up PPM for the color printer.

# 1 Parameter Setup

## 1.1 On MFS1:

Set POST configuration to H6000 printer driver

## 1.2 On POST(s):

Edit C:\PROGRAM FILES\POSware\WinPOS\Winpos.ini file:

Change line *ColorPrinter* = **Yes** - For 2 color

**No** - When not using color print.

Exit and save file

# 2 Printer Installation/Setup

*Printer Installation (Fujitsu DT50II / Epson H6000II)*

Install printer using the standard printer cable #80602313 (# will vary with cable length), connected to the 15pin PTR port (com3) on the TP2K terminal

Install special 2 color receipt paper and check/endorse print ribbons as shown on printer

*NOTE: regular monochrome paper will damage printheads when printer set to 2 Color*

### a. *Stup Printer Switches*

Set Dip SW1-1 to 1-7 = OFF

Set Dip SW1-8 = ON for 9600 Baud

Set Dip SW2-1 to SW2-7 = OFF, SW2-8 = ON

Level 2 Density, the higher the print density the slower the printing.

### b. *Setup Printer Parameters to print red.*

Copy the files BlktoClr.bat and BlktoClr.bin to a work directory on drive C: on your POST

Double click *BlktoClr.bat* to run

## 2.1 Verify printer settings:

At printer: Power off, hold paper feed button down and power on, printer status will print. **Verify Paper type setting** is 2 *COLOR*, press paper feed again to print 2 color print test. Printer automatically resets after test print.

### 3 Presentation Manager (PPM) Setup print red:

#### 3.1 Prepare POSMENU.QDX file for Updates:

On POST:

Close the POSMENU.QDX file,

At C:\Program Files\POSware\WinPoS,      Key **Q-CLOS32 62 <Enter>**

On MFS1:

Close the POSMENU.QDX file,

At C:\PCMASTER,      Key **Q-CLOS32 62 <Enter>**

Copy ( by network or diskette) POSMENU.QDX file from the  
POST C:\Program Files\POSware\WinPOS\QDX directory to the  
MFS1 C:\PCMASTER\QDX directory

On MFS1:

Open POSMENU.QDX file:

At C:\PCMASTER,      Key **Q-LOAD32 /L62 <Enter>**

#### 3.2 Setup POSMENU.QDX Parameters

On MFS1, ISS45 Main Menu – Exit to DOS (Selection 5)

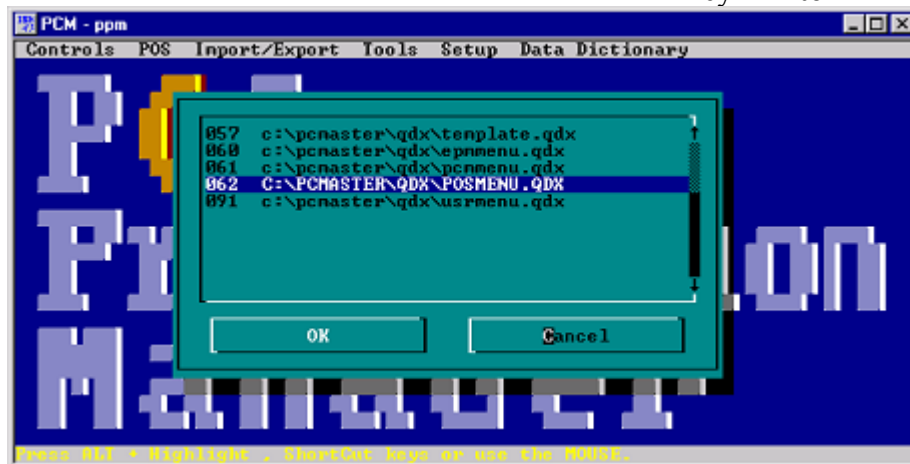
At C:\PCMASTER      Key: **PPM <Enter>**



At POSware Presentation Manager (PPM) main screen,  
 Highlight ppm Qdx file set,      Key <Alt>+<S>  
 Highlight ppm Parameters,      Key <Enter>



Highlight 062 C:\PCMASTER\QDX\POSMENU.QDX,  
 Key <Enter>

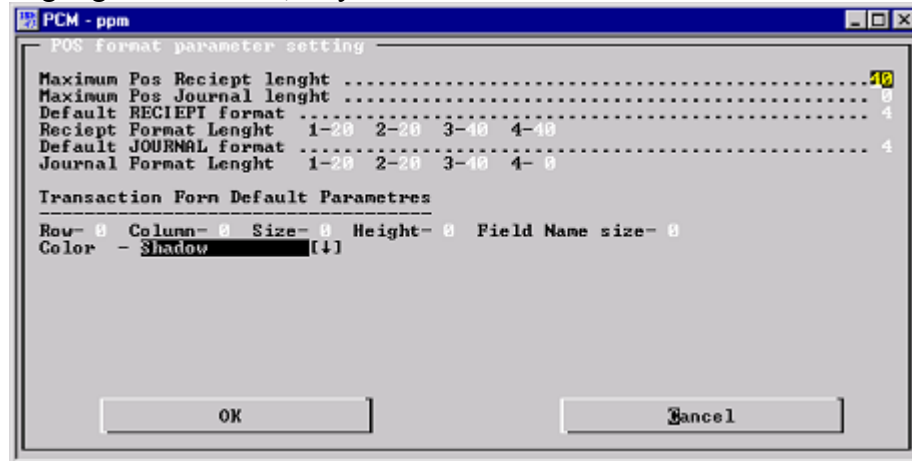


Go to POS setup screen      Key: <Alt>+<P>  
 Highlight PoS Parameters,      Key <Enter>



**Verify/Set the following table:**

Maximum PoS Receipt Length..... [40]  
 Maximum PoS Journal Length..... [40]  
 Default Receipt Format..... [ 4]  
 Receipt Format Length..... 1 – 20 2 – 20 3 – 40 4 – 40  
 Default Journal Format..... [ 4]  
 Journal Format Length..... 1 – 20 2 – 20 3 – 40 4 – 40  
 Color..... Shadow  
 All other values = 0  
 Highlight <Tab> **OK**, Key <Enter>

**3.3 Steps to print specific functions in red.**

The steps required to print specific functions in red differ with each and every function and can also vary for the same function between ISS45 software releases.

*In-depth knowledge of the PPM process is critical.*

**NOTE:** The following sample process (3.3.1) shows the basic steps to use to print any print format line or multiple lines in red,

Using the following criteria:

- a. The **#FRM\_Color** ■ *Color Format* steps **MUST** be in the line immediately preceding the first line you want to print in red
- b. The **#FRM\_Reset** ■ *Reset Format* steps **MUST** be in the line immediately following the last line you want to print in red

### 3.3.1 Sample process to print in red [SALE\_SUBT (Item Void) line]

At Main PPM Screen, key: <Alt>+<P>

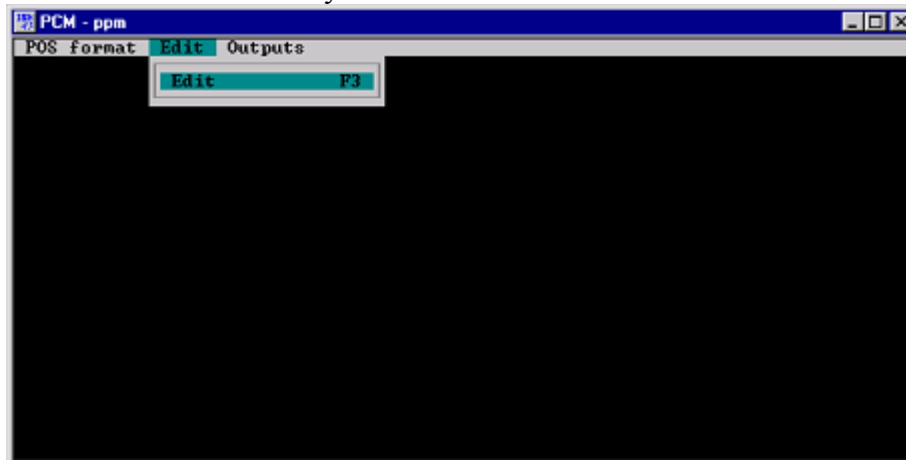
Highlight *PoS Formats*, key: <Enter>



At PoS Formats list screen, Highlight the format you want to change  
ie. Highlight *SALE\_SUBT* (in Blue) (use ↑/↓)  
Highlight *UPDATE* (in Red) (use TAB key)  
Key <Enter>

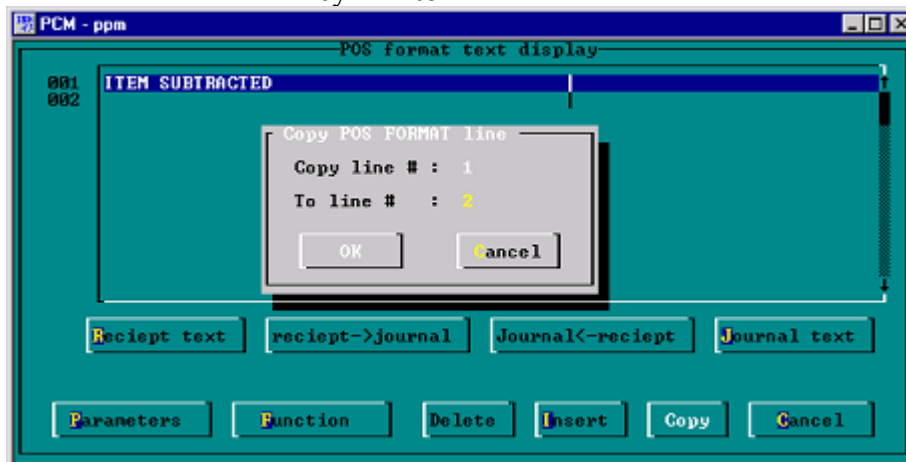


Enter Edit Data Function    Key <Alt>+<E>  
Key <Enter>



Add a blank line  
Copy line 1 to line 2

Highlight line 1, Key <Alt>+<I>  
<Tab> to Copy,  
Key <Enter>,  
Key <2>,  
<Tab> to OK,  
Key <Enter>

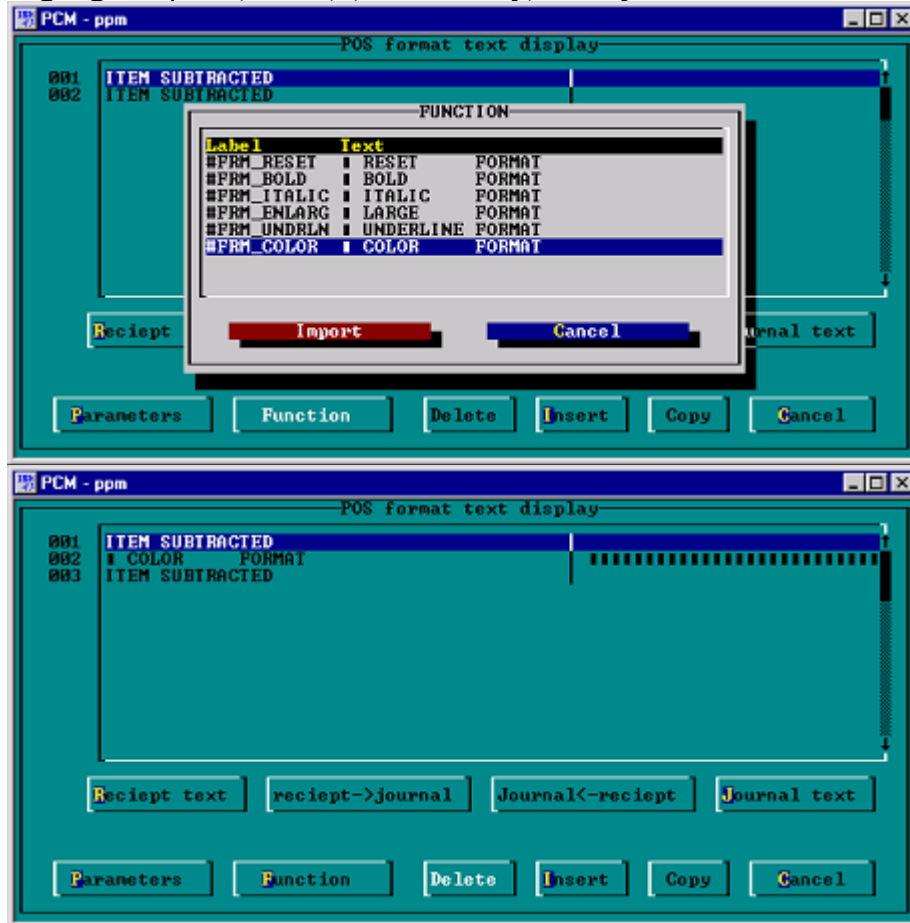


## Setup print red

Highlight line 1 (in Blue) (use ↑/↓)      Key <Alt>+<F> for Function,  
Key <PageDown> 3 times,

Highlight #Frm\_Color ■ Color Format (in Blue) (use ↑/↓)

Highlight Import (in Red) (use TAB key)      Key <Enter>



Highlight line 1 (in Blue) (use ↑/↓)

Highlight Delete (use TAB key)      Key <Enter>

Highlight OK (in Red) (use TAB key)      Key <Enter>

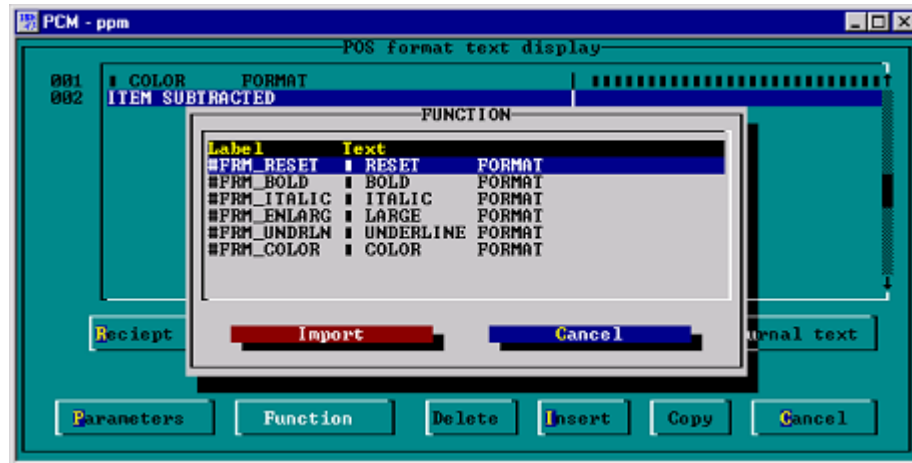
Highlight line 2 "Item Subtracted" (in Blue) (use ↑/↓)

Key <Alt>+<F> for Function

Key <PageDown> 3 times,

Highlight #Frm\_Reset ■ Reset Format (in Blue)

Highlight Import (in Red) (use TAB key)      Key <Enter>



Define color row

Highlight line 2 "Item Subtracted" (in Blue) (use ↑/↓)

Key <Alt>+<P> for Parameters,

In Receipt column: <Tab> to *I*talic [ ]

Key <SpaceBar> to √,

Key <F8> to save



Exit

Key <Alt>+<C>, <Esc>, <Esc>, <Alt>+<C>, <X>

#### 4 Load POSMENU.QDX changes to POS(s)

On POS(s):

At C:\Program Files\POSware\WinPOS

Close POSMENU.QDX file, Key Q-CLOS32 62 <Enter>

Copy POSMENU.QDX from MFS1 C:\PCMASTER\QDX to  
 POS(s) C:\Program Files\POSware\WinPOS\QDX (network/diskette)

Open POSMENU.QDX at POS(s), Key Q-LOAD32 /L62 <Enter>

## A Change from Color to Monochrome Printing

1. Install monochrome receipt paper and check/endorse print ribbons as shown on printer  
*NOTE: regular monochrome paper will damage printheads when printer set to 2 Color*
2. Edit C:\PROGRAM FILES\POSware\WinPOS\Winpos.ini file:  
Change line *ColorPrinter* = **No** - When not using color print.  
**Yes** - For 2 color  
Exit and save file
3. *Setup Printer Parameters to print red.*  
Copy the files *ClrtoBlk.bat* and *ClrtoBlk.bin* to a work directory on drive C: on your POST  
Double click *ClrtoBlk.bat* to run
4. At printer: Power off, hold paper feed button down and power on, printer status will print.  
**Verify Paper type setting** is *Monochrome*, press paper feed again to print monochrome print test. Printer automatically resets after test print.

Note: If printer is set to Monochrome(black) and *2COLOR* paper is left in the printer  
ALL printing will be in red.



**© Fujitsu Transaction Solutions Inc. 2001**

Fujitsu Transaction Solutions Inc. endeavors to ensure that the information in this document is correct and fairly stated but does not accept liability for any error or omission.

The development of Fujitsu Transaction Solutions products and services is continuous and published information may not be up to date. It is important to check the current position with Fujitsu. This document is not part of a contract or license save insofar as may be expressly agreed.

---

**Fujitsu Transaction Solutions Inc.  
2933 Bunker Hill Lane, #101  
Santa Clara, CA 95054**

**P/N 89000093  
PIN 45001/060**