

ENCOR LFS Install

Release 1.0

B005-0000-1889
Issue A



The product described in this book is a licensed product of NCR Corporation.

NCR is a registered trademark of NCR Corporation. NCR SelfServ is a trademark of NCR Corporation in the United States and/or other countries. Other product names mentioned in this publication may be trademarks or registered trademarks of their respective companies and are hereby acknowledged.

The terms HDMI and HDMI High-Definition Multimedia Interface, and the HDMI Logo are trademarks or registered trademarks of HDMI Licensing LLC in the United States and other countries.

Where creation of derivative works, modifications or copies of this NCR copyrighted documentation is permitted under the terms and conditions of an agreement you have with NCR, NCR's copyright notice must be included.

It is the policy of NCR Corporation (NCR) to improve products as new technology, components, software, and firmware become available. NCR, therefore, reserves the right to change specifications without prior notice.

All features, functions, and operations described herein may not be marketed by NCR in all parts of the world. In some instances, photographs are of equipment prototypes. Therefore, before using this document, consult with your NCR representative or NCR office for information that is applicable and current.

To maintain the quality of our publications, we need your comments on the accuracy, clarity, organization, and value of this book.

Address correspondence to:

Director, Engineering Services
NCR Corporation
2651 Satellite Blvd.
Duluth, GA 30396-5810
U.S.A.

Internet Address:

<http://www.info.ncr.com/Feedback>

Copyright © 2015
By NCR Corporation
Duluth, GA U.S.A.
All Rights Reserved

Table of Contents

<i>Chapter 1:</i> Windows Required Changes.....	1-1
1.1 Configuring Windows 7.....	1-1
<i>Chapter 2:</i> ENCOR LFS Installation	2-1
<i>Chapter 3:</i> Verify IIS Connection	3-1

Revision Record

Issue	Date	Remarks
A	Dec 2017	First issue

Chapter 1: Windows Required Changes

1.1 Configuring Windows 7

This document is intended as a broad overview for configuring Windows 7 Professional and LFS *prior to installing ENCOR*.

1. By default, the administrator account is disabled in Windows 7 Professional. You must enable access to this account.

Important:

Administrator credentials should be the same as the MFS1 (i.e.

User: administrator

Password: Retalix1!).

- a) Click on **START**, enter **SECPOL.MSC** in the Search Box, and press **ENTER**.

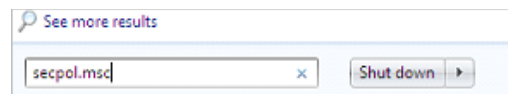


Figure 1-1. Search Box - SECPOL.MSC

- b) The Local Security Policy Screen will open:

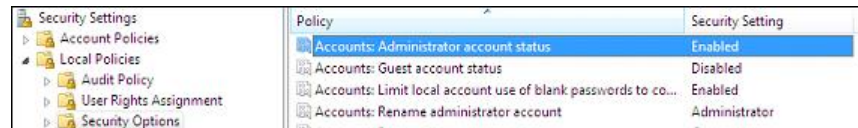


Figure 1-2. Local Security Policy Screen

- c) Click on **Local Policy > Security Options** and select **Enabled for Accounts: Administrator Account Status**.
2. Open the Control Panel and change the "View by" setting to **Small Icons** (upper right-hand corner).



Figure 1-3. Control Panel - View by

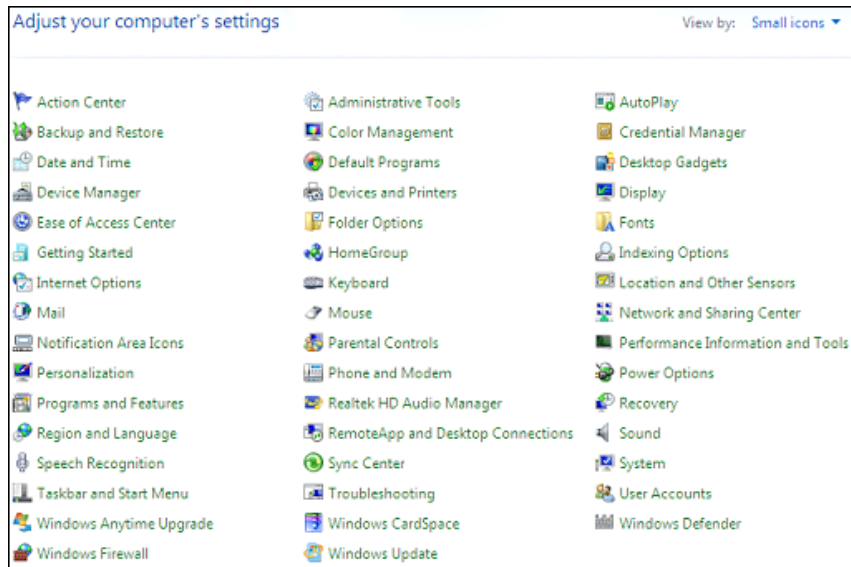


Figure 1-4. Control Panel - View by: Small icons

3. Click on **User Accounts**.

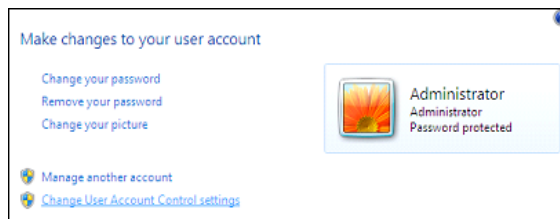


Figure 1-5. Control Panel - User Accounts

4. Click **Change User Account Control settings**.
5. Disable User Account Control by moving the slide bar all the way to the bottom (**Never notify**) and click **OK**.

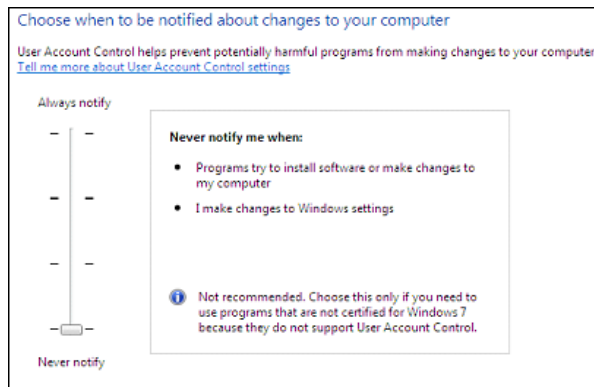


Figure 1-6. Control Panel - User Accounts: Never notify

6. By default, the c: drive will not be shared, and the administrator will not have any rights on the drive. Share the drive as c, add the administrator, and set Full Permissions.
 - a) Click the **Computer** icon from the Desktop.
 - b) Right-click on the **C:** drive and select **Properties**.

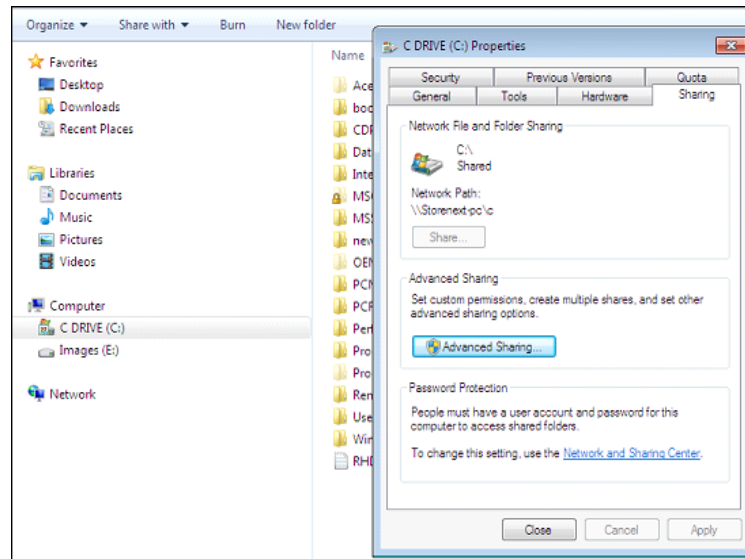


Figure 1-7. C: Drive - Properties

- c) Click on **Advanced Sharing**.

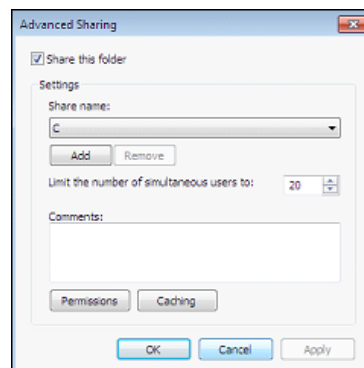


Figure 1-8. C: Drive - Advanced Sharing

- d) Click the **Share this folder** checkbox and add a Share name of **C**.
 e) Click on **Permissions**.

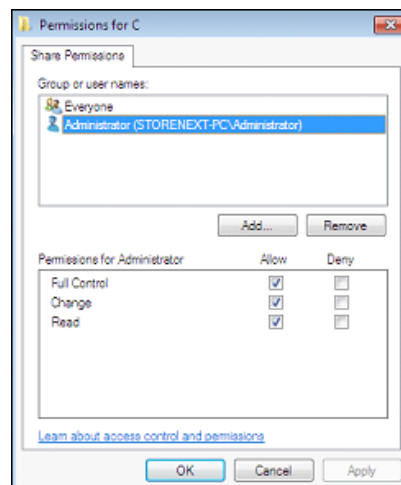


Figure 1-9. C: Drive - Permissions for C

- f) Highlight the **Administrator** and check the **Allow** box for **Full Control**, **Change**, and **Read**.
7. By default, the network card will be configured to obtain an IP address automatically. **ENCOR** requires all terminals to have a static IP address. Configure the Internet Protocol Version 4 (TCP/IPv4) function of the network card so that it will communicate on your network (under Network and Internet > Network Connections). Select **Use the following IP Address** and enter static address data.

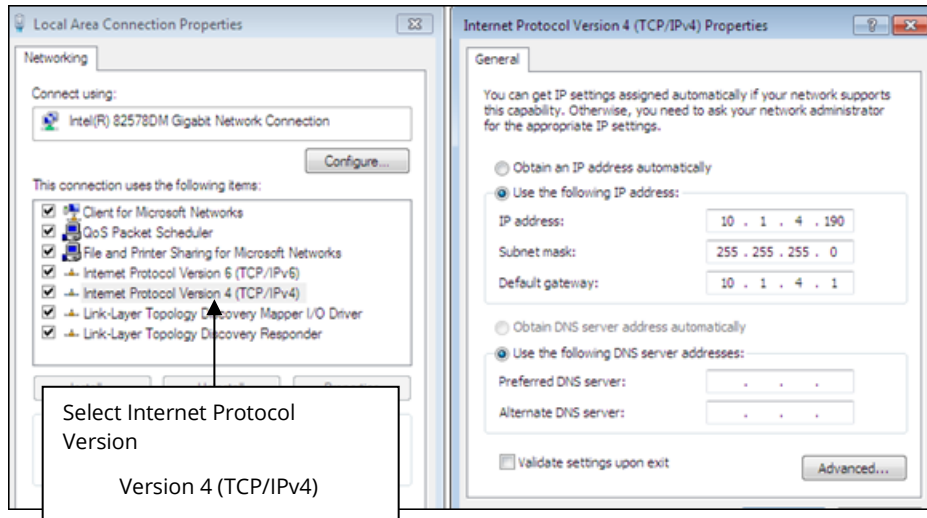


Figure 1-10. Local Area Connection - Internet Protocol Version 4

8. By default, the Remote Registry Service in Windows 7 is set for Manual Start and is not running. (In previous versions of Windows, this service had been set to automatic and always running.) **ENCOR** requires this service to be running to install any LFS terminal. It is recommended you set this service to Automatic Start (under **Services > Services Local**).

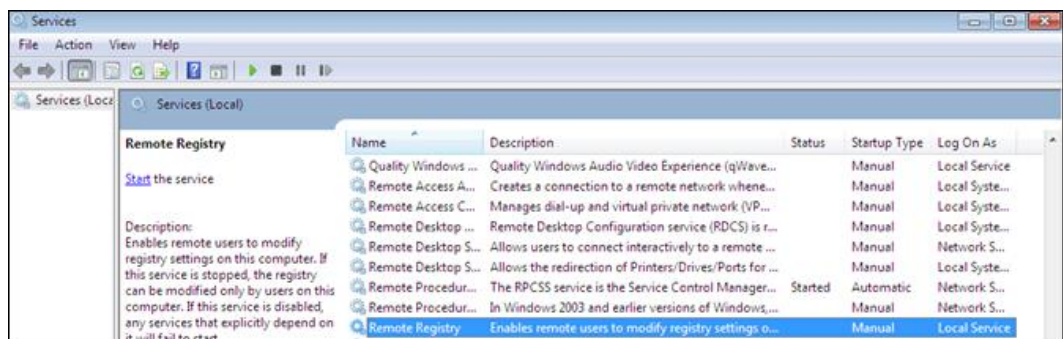


Figure 1-11. Services - Services Local

9. By default, the drivers for the On Board Video Card (in Acer PCs) do not support a Full Screen Command Prompt Box, but **ENCOR** requires this functionality. Disable the installed video card driver (select **Control Panel > Device Manager > Display Adapters**, right-click, and select **Disable**) and reboot the PC.

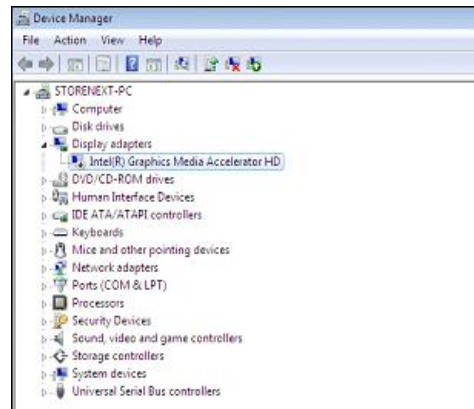


Figure 1-12. Device Manager - Intel Graphics Media Accelerator

10. Verify that a command prompt window can be opened and toggle back and forth between full screen and normal screen.
 - a) Click on **Start**, enter **cmd** in the Search Box, and press **Enter**. The command window displays.
 - b) Press **<Alt><Enter>** twice to toggle between both screens.
 - c) Type **exit** and press **Enter** to return to the Desktop.
11. Turn off the Windows Firewall (Control Panel > Windows Firewall > Customize Settings).

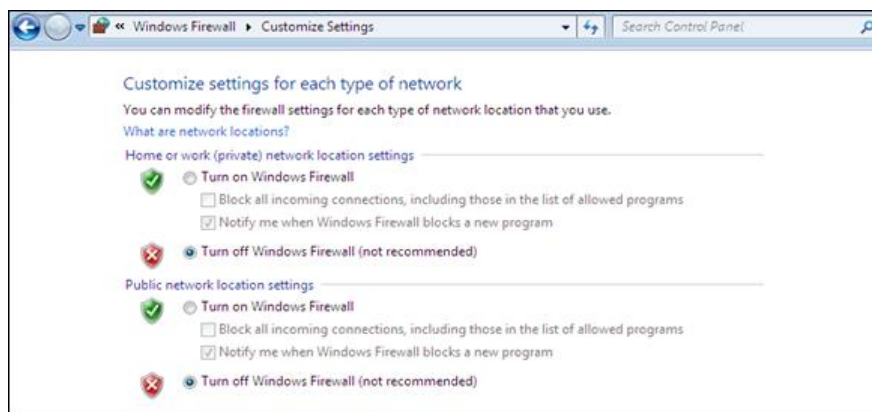


Figure 1-13. Windows Firewall - Customize Settings

Chapter 2: ENCOR LFS Installation

Note:

The LFSs do *not* require SQL to be installed. The LFSs connect to the MFS1 SQL database.

1. Go to the installation source and open the FrontOffice folder.

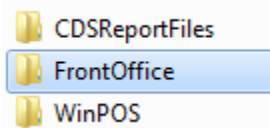


Figure 2-1. FrontOffice Folder

2. Select **Disk1**.

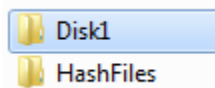


Figure 2-2. FrontOffice > Disk1

3. Double click **Setup.exe**.

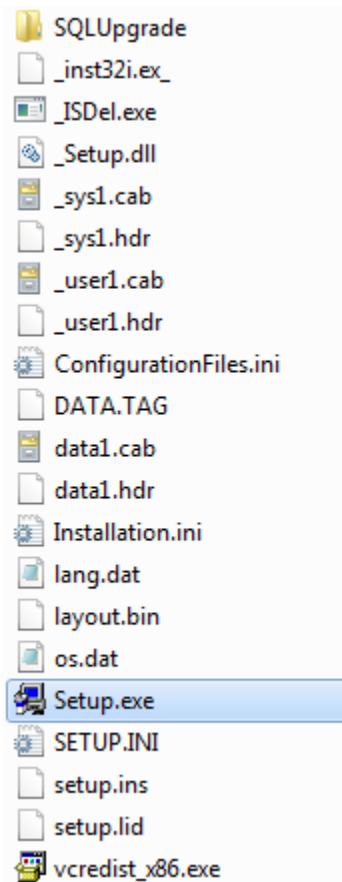


Figure 2-3. FrontOffice > Disk1 > Setup

4. Installation begins.

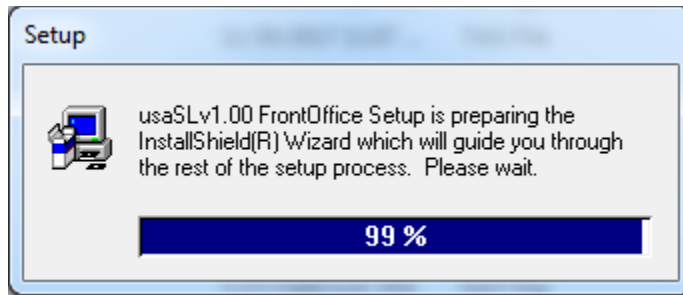
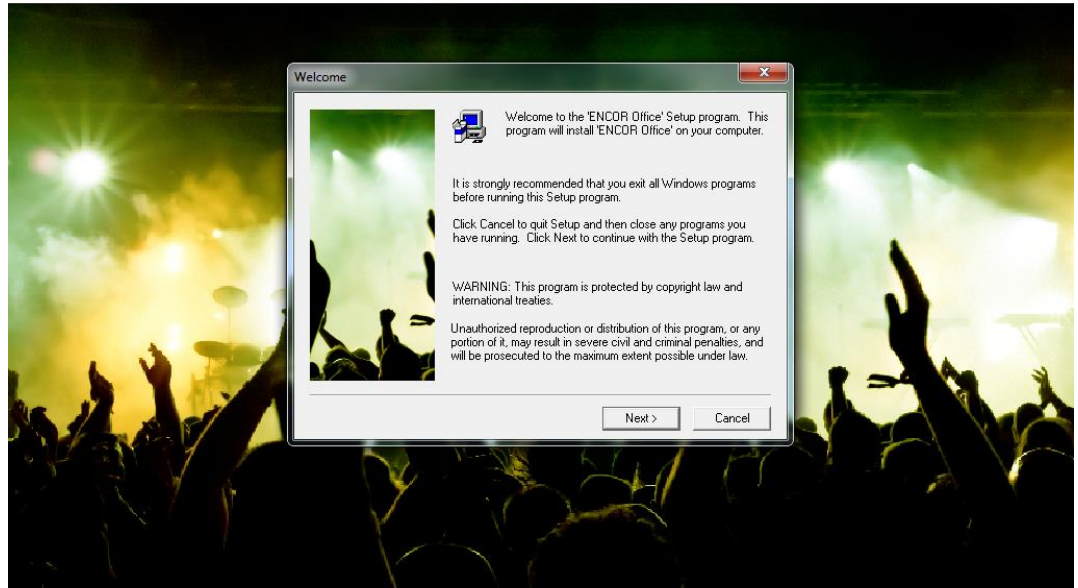


Figure 2-4. Installation Begins

5. Click on **Next**.

ENCOR Office Installation



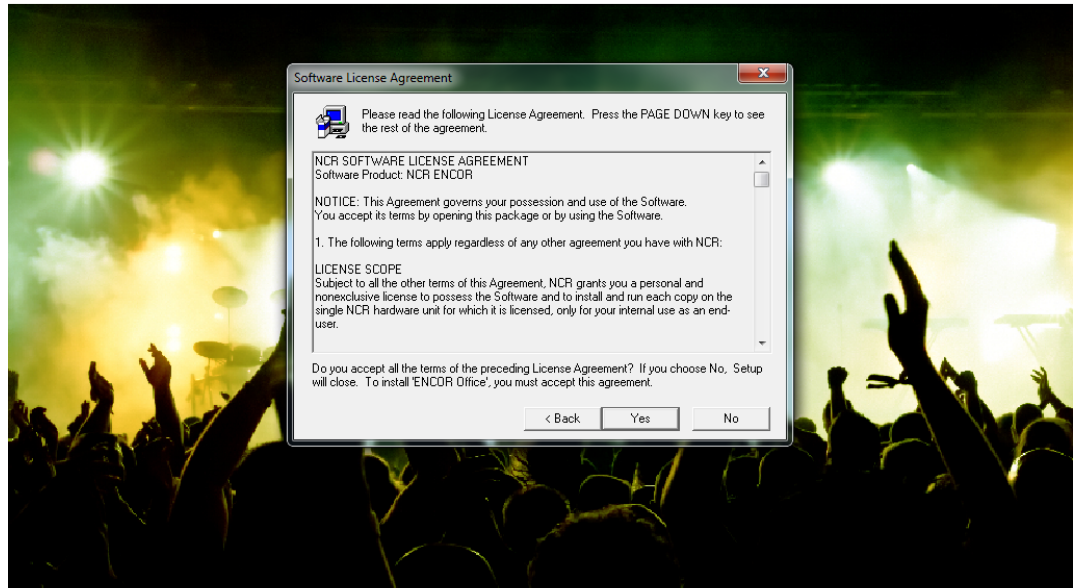
© 2017 NCR
All Rights Reserved
ENCOR is a trademark of NCR

commerce made complete

Figure 2-5. ENCOR Setup - Welcome

- Click on **Yes** for the License Agreement.

ENCOR Office Installation



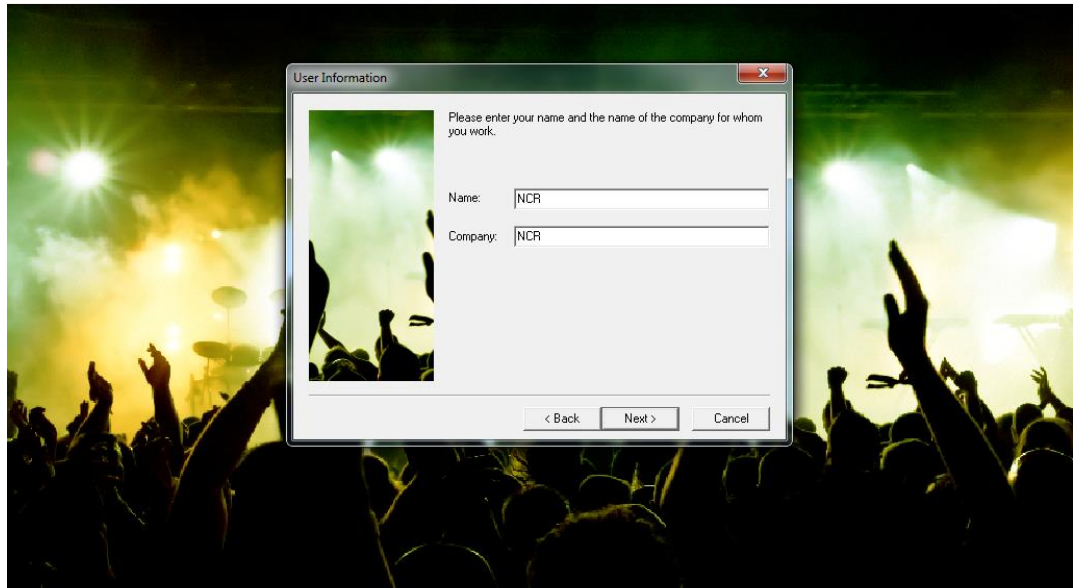
© 2017 NCR
All Rights Reserved
ENCOR is a trademark of NCR

commerce made complete

Figure 2-6. ENCOR Setup - Software License Agreement

- Enter the name of the LFS and company and then click **Next**.

ENCOR Office Installation



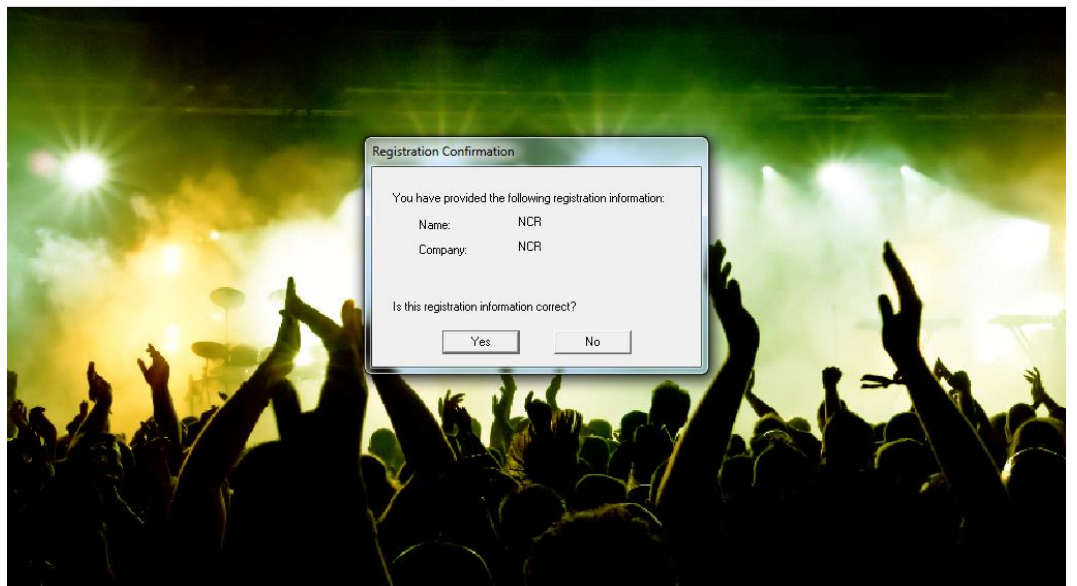
© 2017 NCR
All Rights Reserved
ENCOR is a trademark of NCR

commerce made complete

Figure 2-7. ENCOR Setup - User Information

8. Confirm registration information and click **Yes**.

ENCOR Office Installation



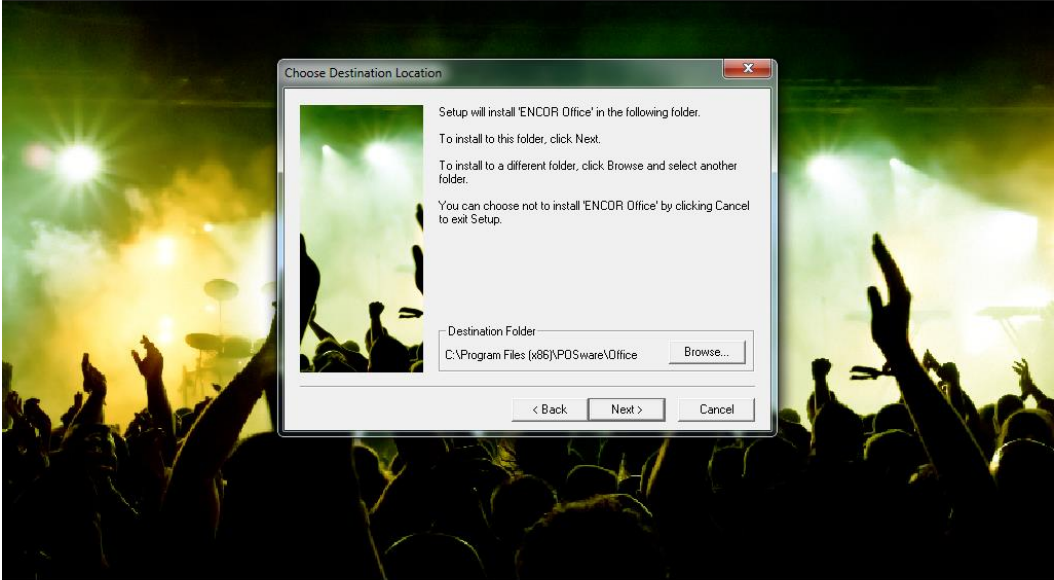
© 2017 NCR
All Rights Reserved
ENCOR is a trademark of NCR

commerce made complete

Figure 2-8. ENCOR Setup - Registration Confirmation

9. Click **Next**.

ENCOR Office Installation



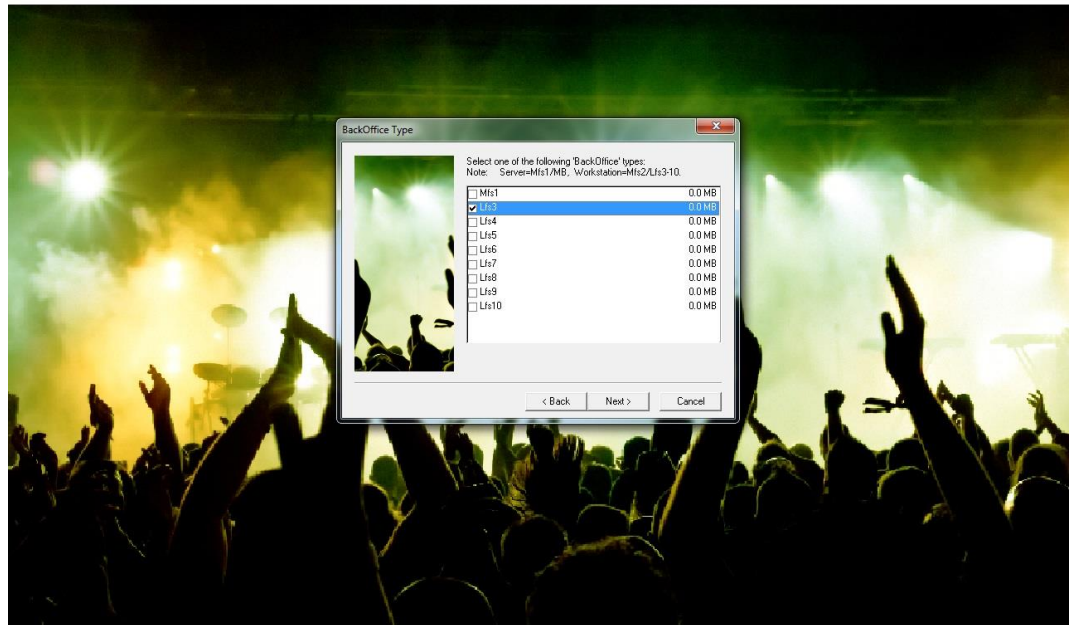
© 2017 NCR
All Rights Reserved
ENCOR is a trademark of NCR

commerce made complete

Figure 2-9. ENCOR Setup - Choose Destination Location

10. Select the LFS number being installed and then click **Next**.

ENCORA Office Installation



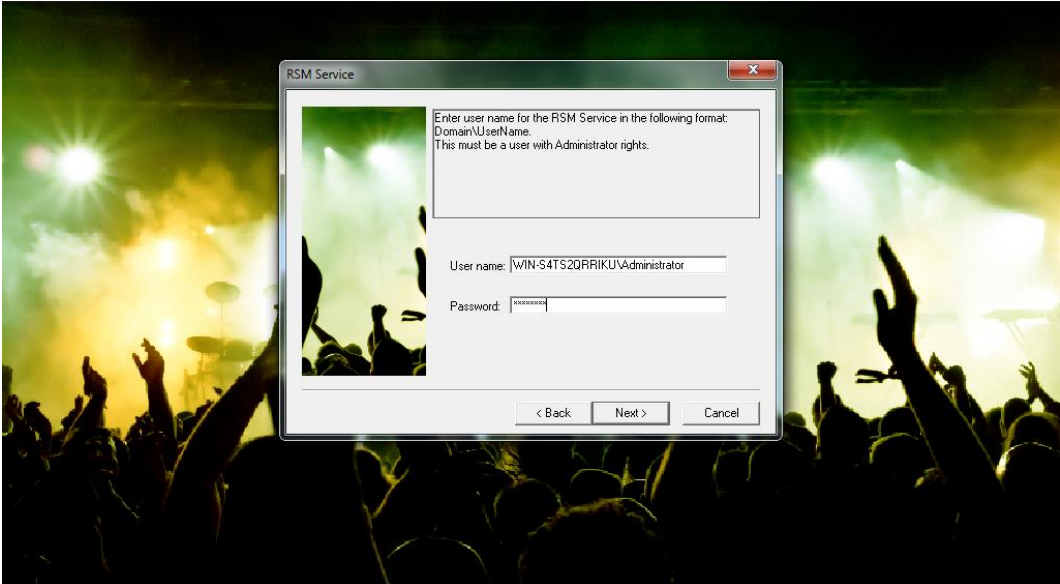
© 2017 NCR
All Rights Reserved
ENCORA is a trademark of NCR

commerce made complete

Figure 2-10. ENCORA Setup - BackOffice Type

11. Enter the administrator password and then click **Next**.

ENCOR Office Installation



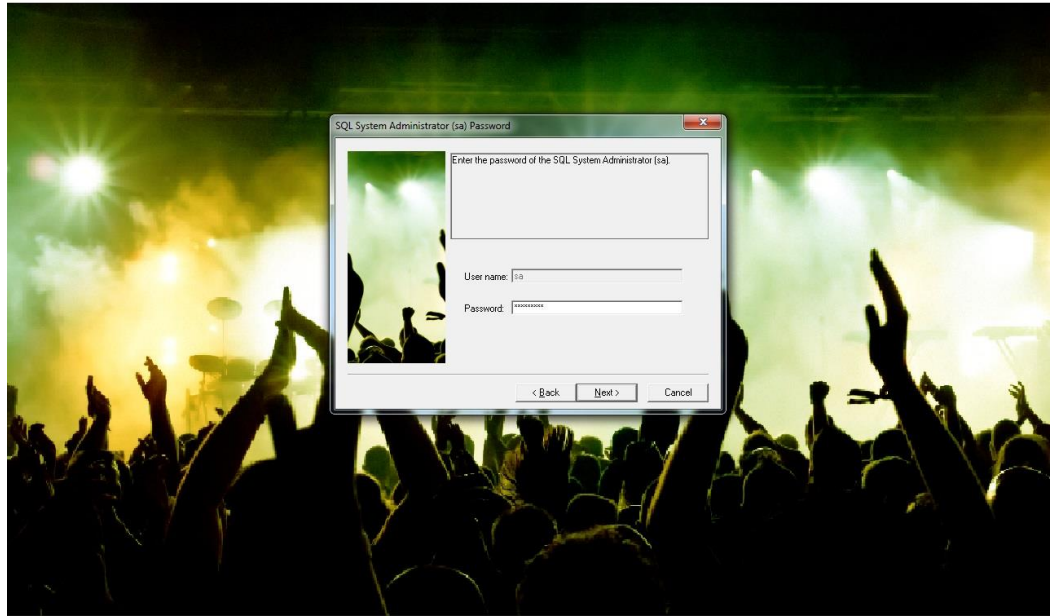
© 2017 NCR
All Rights Reserved
ENCOR is a trademark of NCR

commerce made complete

Figure 2-11. ENCOR Setup - RSM Service

12. Enter the SQL sa password you have set for SQL. This is required for the LFS to connect to the MFS1 database.

ENCOR Office Installation



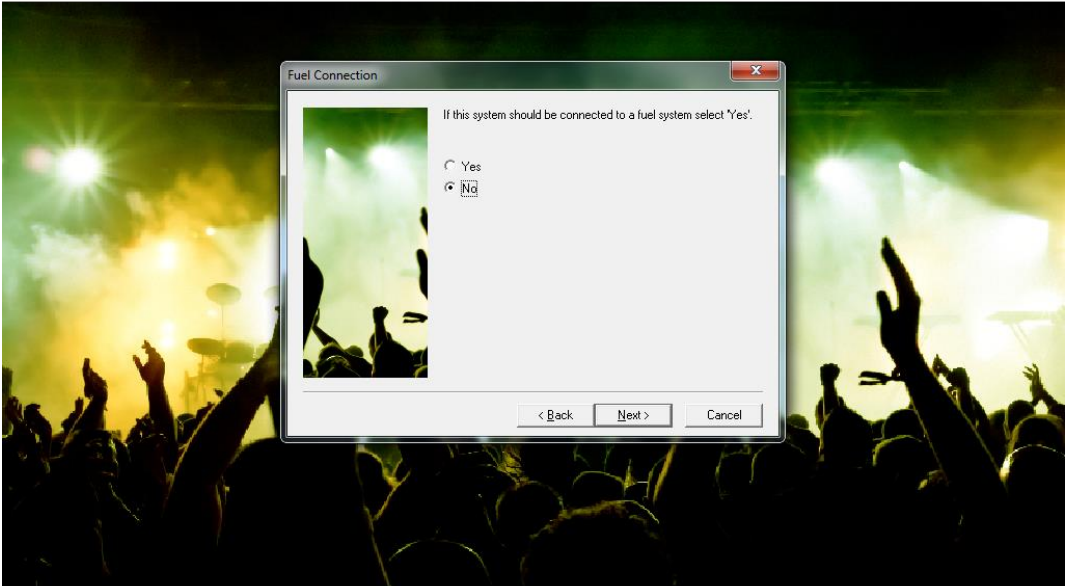
© 2017 NCR
All Rights Reserved
ENCOR is a trademark of NCR

commerce made complete

Figure 2-12. ENCOR Setup - SQL System Administrator (sa) Password

13. If no fuel in system, select **No**, and then click on **Next**.

ENCOR Office Installation



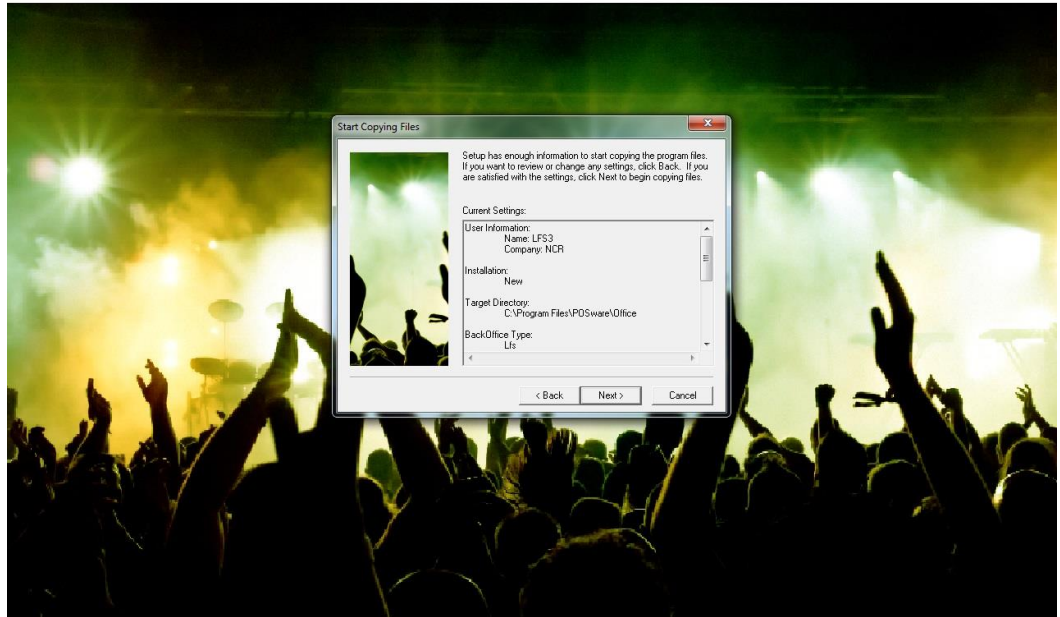
© 2017 NCR
All Rights Reserved
ENCOR is a trademark of NCR

commerce made complete

Figure 2-13. ENCOR Setup - Fuel Connection

14. Review the settings and click **Next**.

ENCOR Office Installation
Version: 1.0.0.0-040



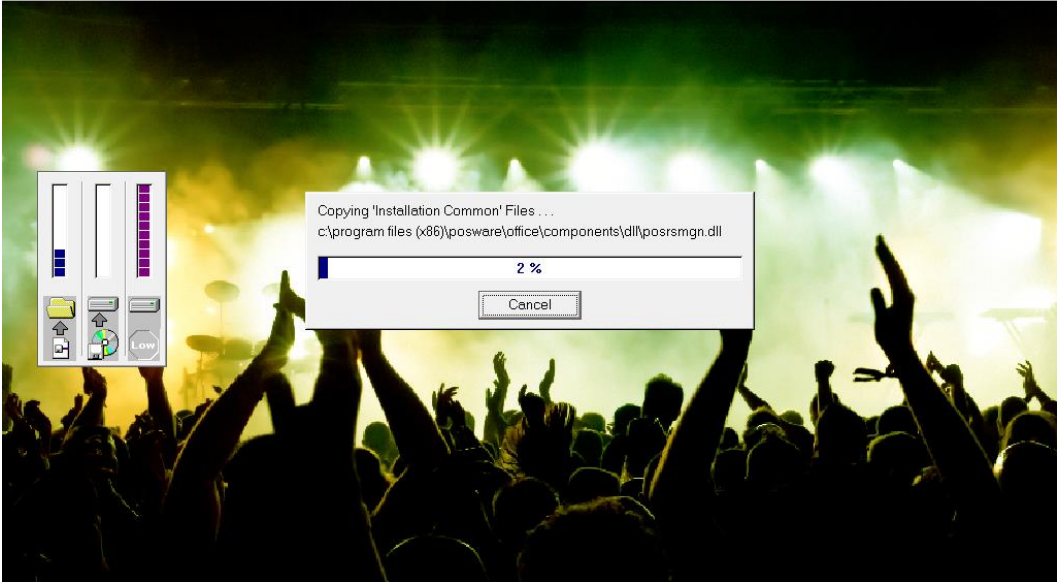
© 2017 NCR
All Rights Reserved
ENCOR is a trademark of NCR

commerce made complete

Figure 2-14. ENCOR Setup - Start Copying Files

15. Installation proceeds.

ENCOR Office Installation



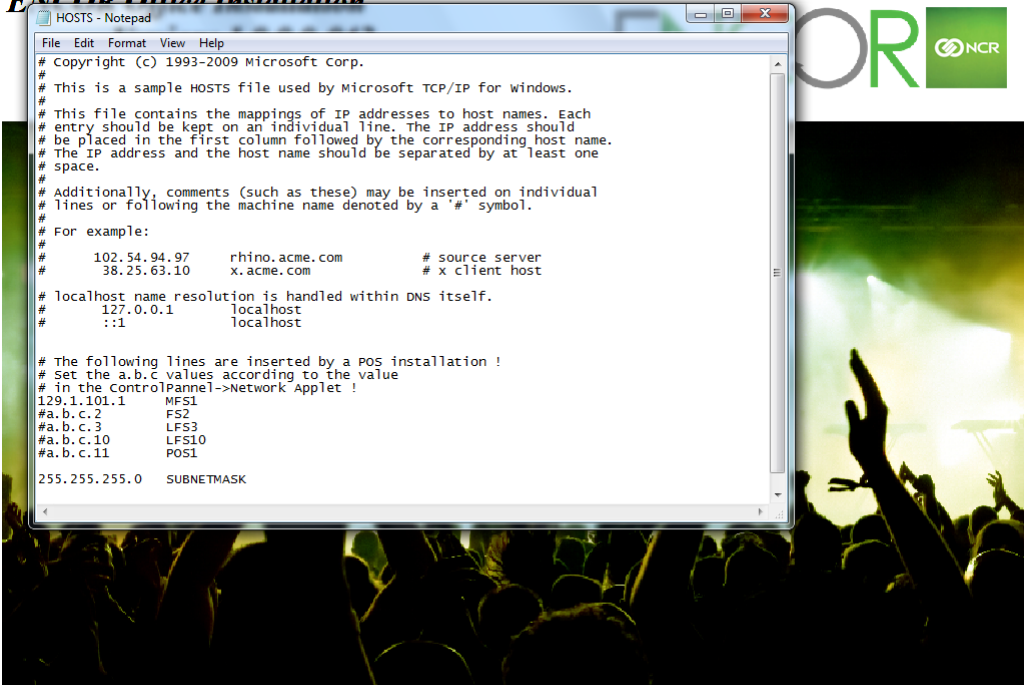
© 2017 NCR
All Rights Reserved
ENCOR is a trademark of NCR

commerce made complete

Figure 2-15. ENCOR Setup - Installation Proceeds

16. Enter the HOSTS file to match the file on the MFS. Save the file and continue.

ENCOR Office Installation

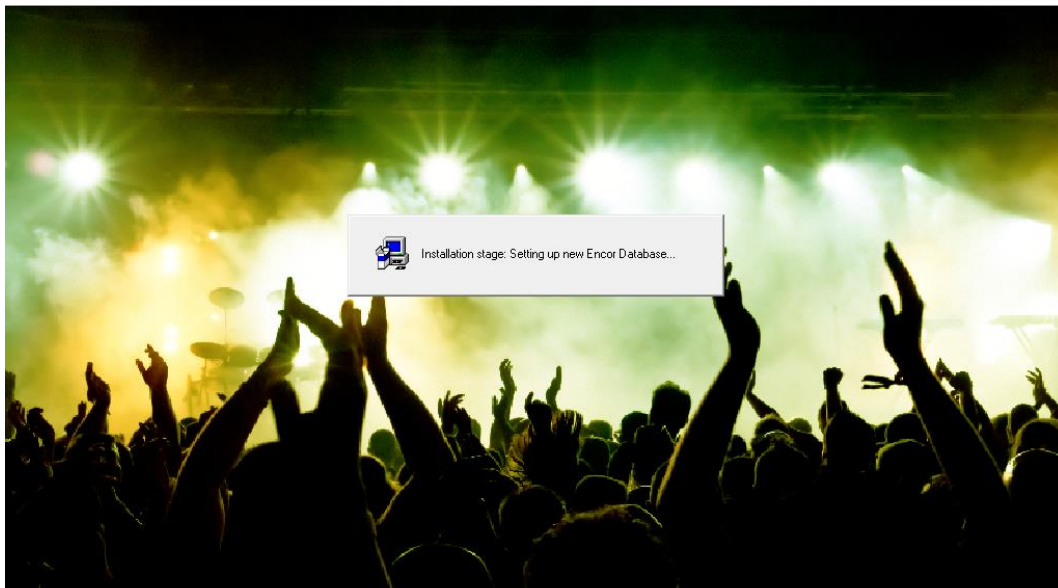


© 2017 NCR

Figure 2-16. ENCOR Setup - HOSTS File

17. The **ENCOR** database is deployed. No action is necessary at this time.

ENCOR Office Installation



© 2017 NCR
All Rights Reserved
ENCOR is a trademark of NCR

commerce made complete

Figure 2-17. ENCOR Setup – ENCOR Database

18. Click **Next**. Note that beginning with this point, if the installer is canceled, critical **ENCOR** components will not be installed, causing the application to not be able to run correctly.

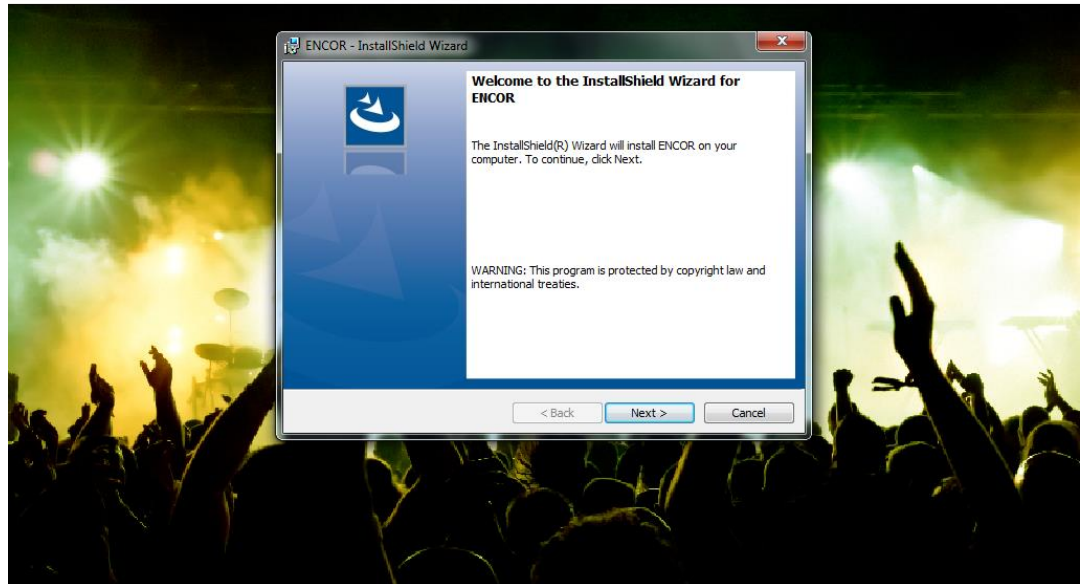
ENCOR Office Installation

Figure 2-18. ENCOR Setup - InstallShield Wizard

19. Select the **I accept the terms in the license agreement** radio button then click **Next**.

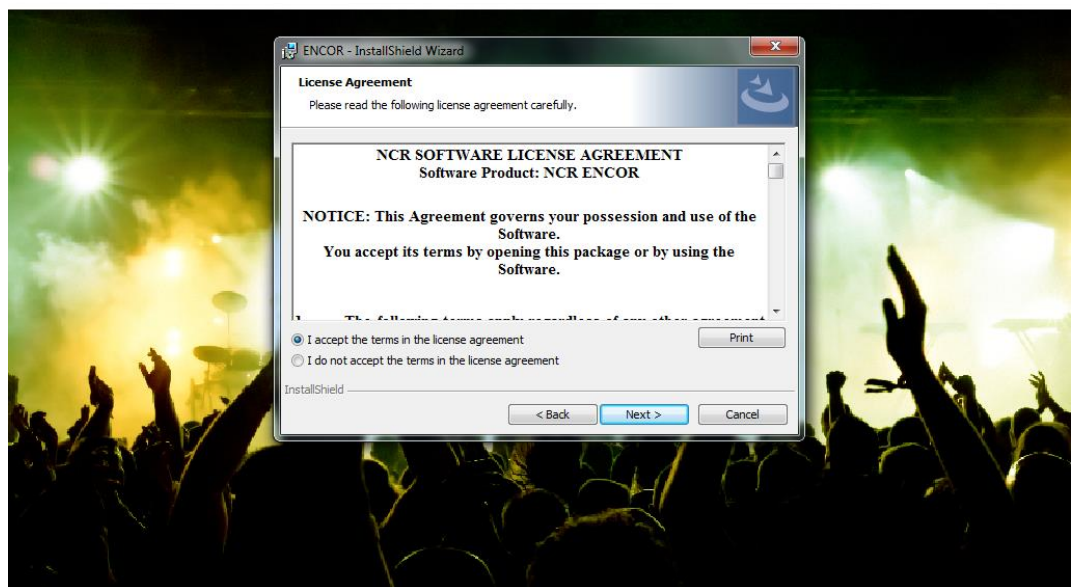
ENCOR Office Installation

Figure 2-19. ENCOR Setup - License Agreement

20. If this computer is to be the MFS only with the **ENCOR** and Back Office databases deployed elsewhere, select **Client**. If this computer is to house the

ENCOR and/or Back Office databases, select Server, select which databases are to be deployed on this system, then click **Next**.

Note:

On the MFS install, the FrontOff database is always deployed to this (the MFS) computer and will not be deployed on any other computer install such as LFS3. The **ENCOR** and Back Office databases need to be deployed only once each at a store. This installer allows the destinations of each to be user selectable. Deploying either the **ENCOR** or Back Office database to multiple computers at a store will cause issues.

Note:

One of or both the **ENCOR** and Back Office Server options must be selected when selecting the Server Installation Type. Should no databases be selected with the Server option, a message will appear stating the following:

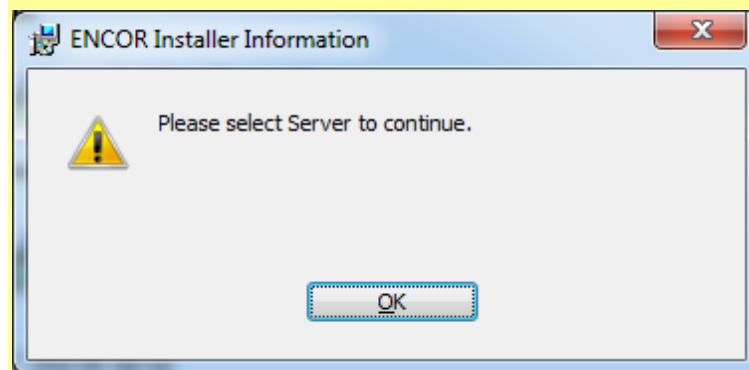


Figure 2-20. ENCOR Setup - ENCOR Installer Information

Should this appear, click **OK** to return to the Installation Type screen and select a database. If the **ENCOR** and/or Back Office databases are on a different computer, select the Client Installation Type.

ENCOR Office Installation

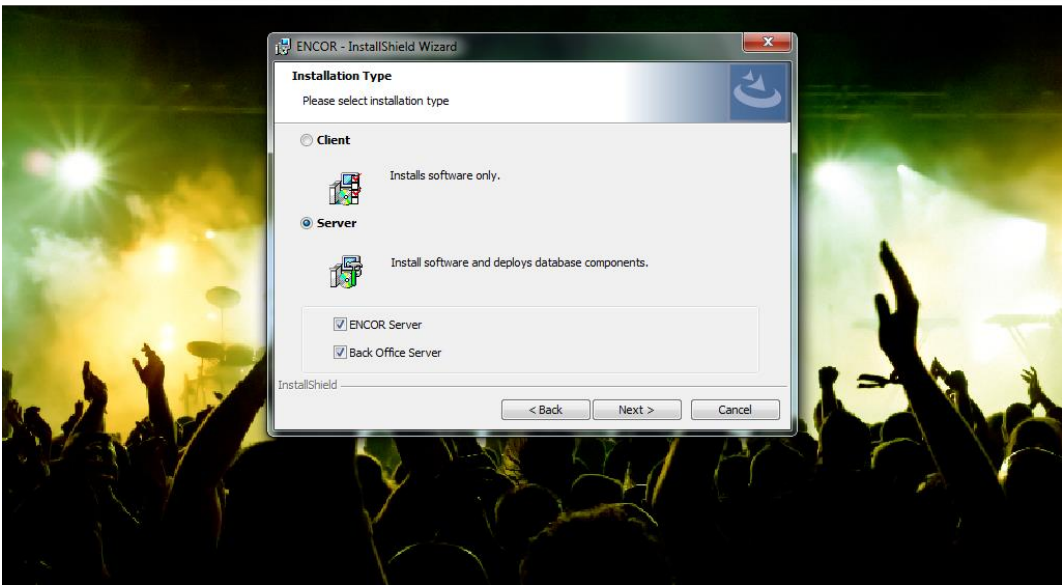


Figure 2-21. ENCOR Setup - Installation Type

21. Click **Install**.

ENCOR Office Installation

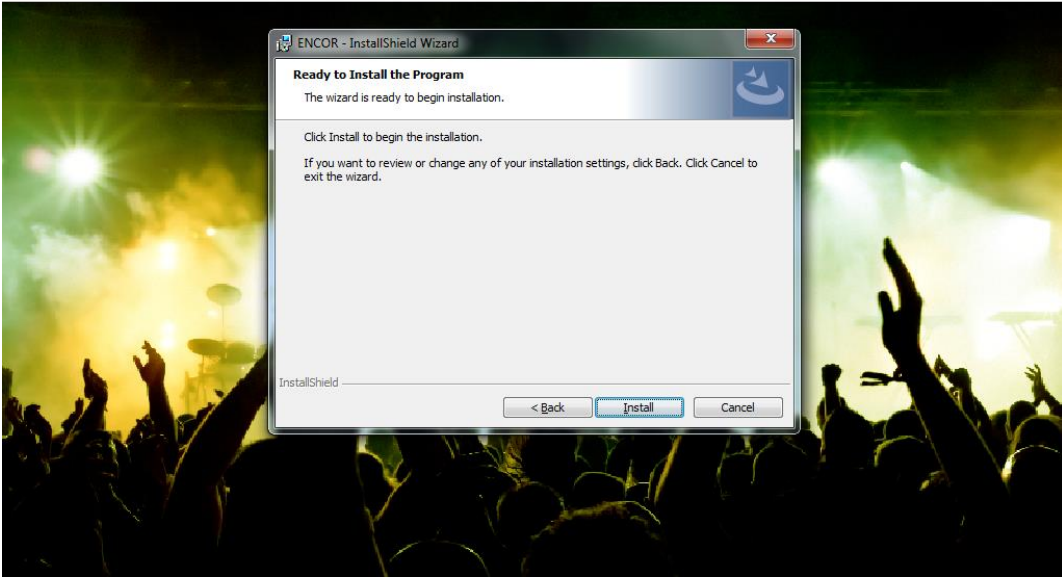


Figure 2-22. ENCOR Setup - Install Program

22. Program features are installed. No action is necessary at this time.

ENCOR Office Installation

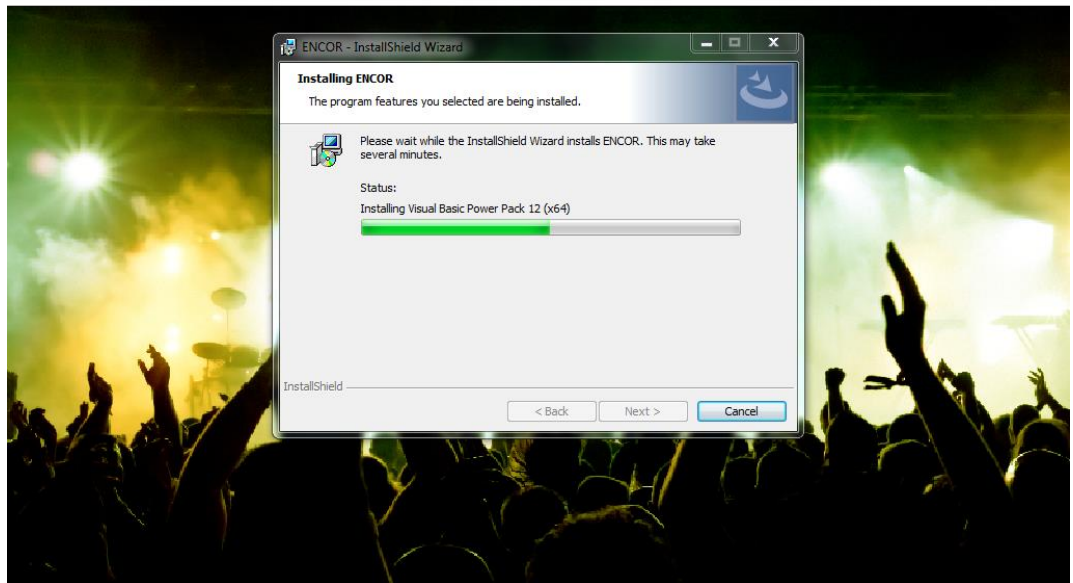


Figure 2-23. ENCOR Setup - Program Features

23. Select or enter the database server that is to have the **ENCOR** database then enter the Login ID and Password to connect to it. Note if the **ENCOR** database is already deployed or will be deployed to a different computer, this installation routine still requires that computer and login credentials be entered here. Click **Next** to continue.

ENCOR Office Installation

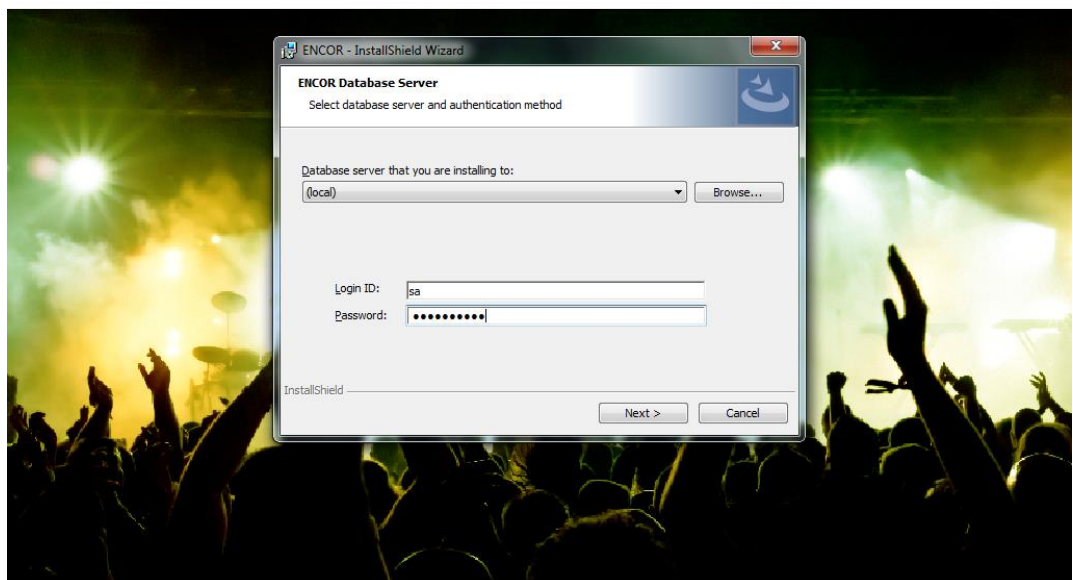


Figure 2-24. ENCOR Setup - ENCOR Database Credentials

24. Connectivity to the **ENCOR** database is verified if it was not selected to be deployed as part of this installation. If the installer cannot connect to the **ENCOR** database, the below error message is displayed. Click **Continue** to go back to the **ENCOR** Database Server screen to click the **Next** button to continue with the installation or click **Cancel** to re-enter the server, Login ID, and Password. If the installer can connect to the **ENCOR** database, this message is not displayed.

ENCOR Office Installation

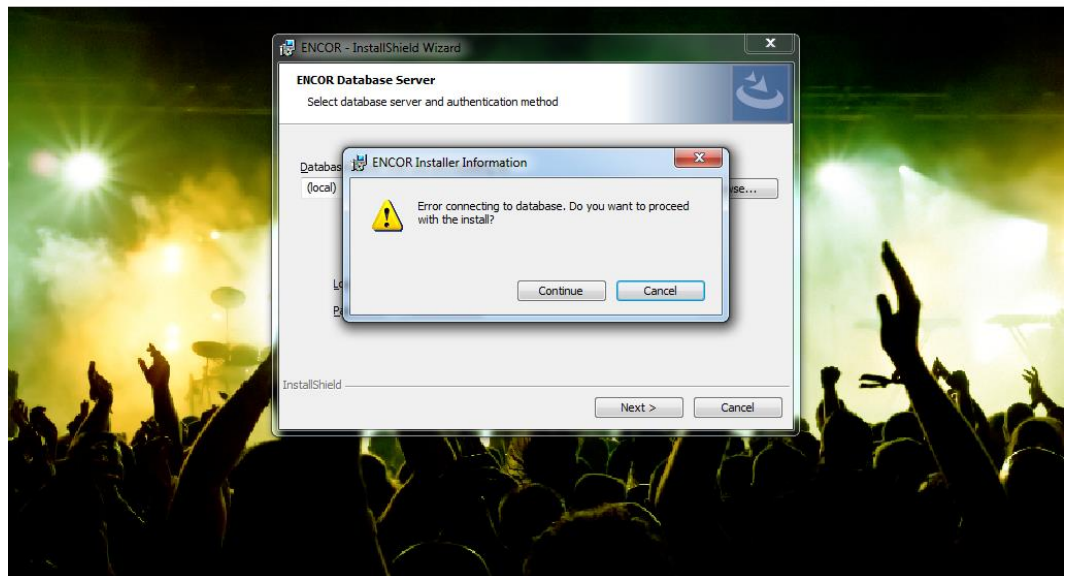


Figure 2-25. ENCOR Setup - ENCOR Database Connect Error

25. Select or enter the database server that is to have the Back Office database then enter the Login ID and Password to connect to it. Note if the Back Office database is deployed to a different computer, this installation routine still requires that computer and login credentials be entered here. Click **Next** to continue.

ENCOR Office Installation

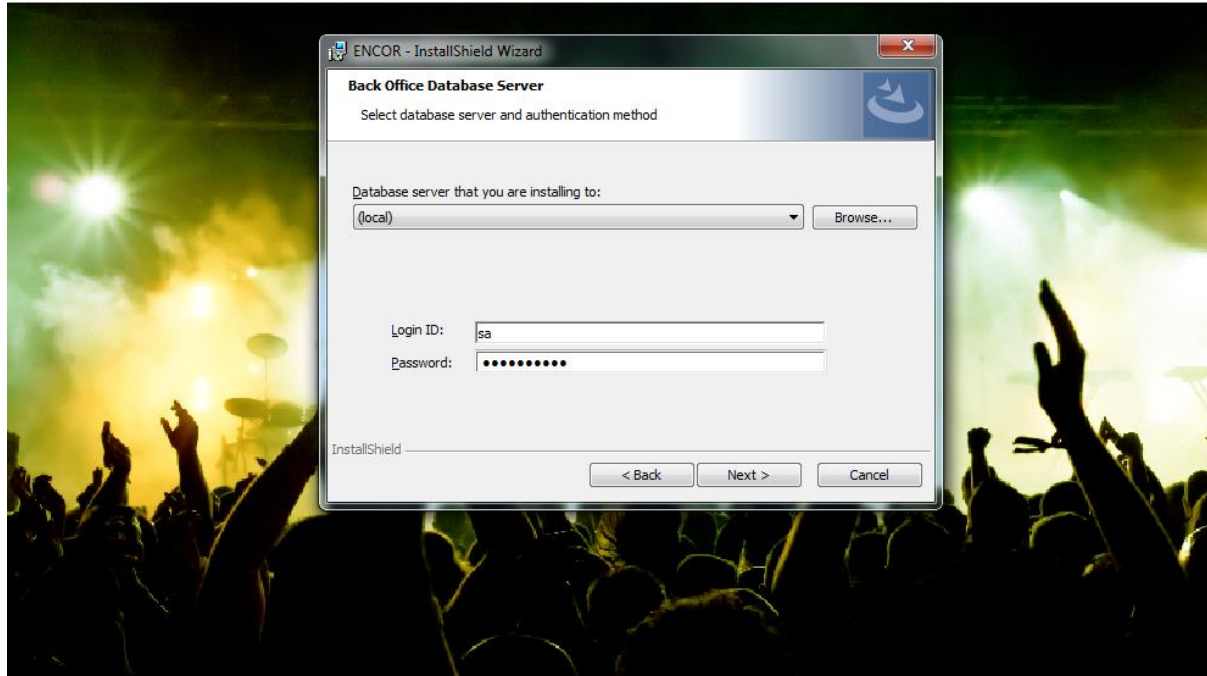


Figure 2-26. ENCOR Setup - Back Office Database Credentials

26. Connectivity to the Back Office database is verified if it was not selected to be deployed as part of this installation. If the installer cannot connect to the Back Office database, the below error message is displayed. Click **Continue** to go back to the Back Office Database Server screen to click **Next** to continue with the installation or click **Cancel** to re-enter the server, Login ID, and Password. If the installer can connect to the Back Office database, this message is not displayed.

ENCOR Office Installation

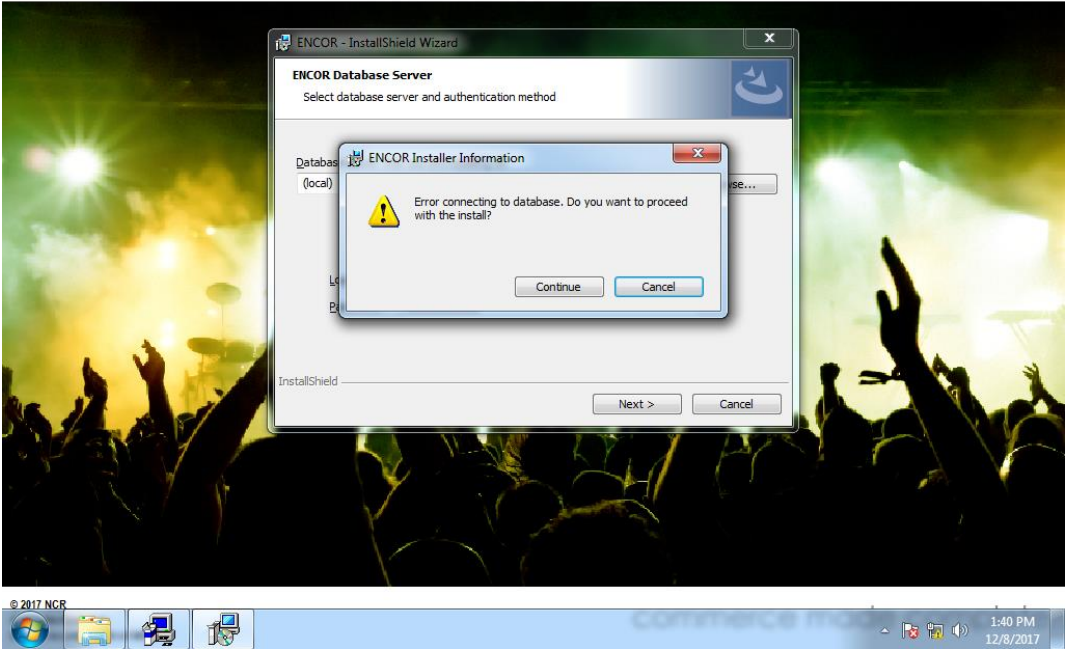


Figure 2-27. ENCOR Setup - Back Office Database Connect Error

27. Additional components of **ENCOR** are installed. No action is necessary at this time.

ENCOR Office Installation

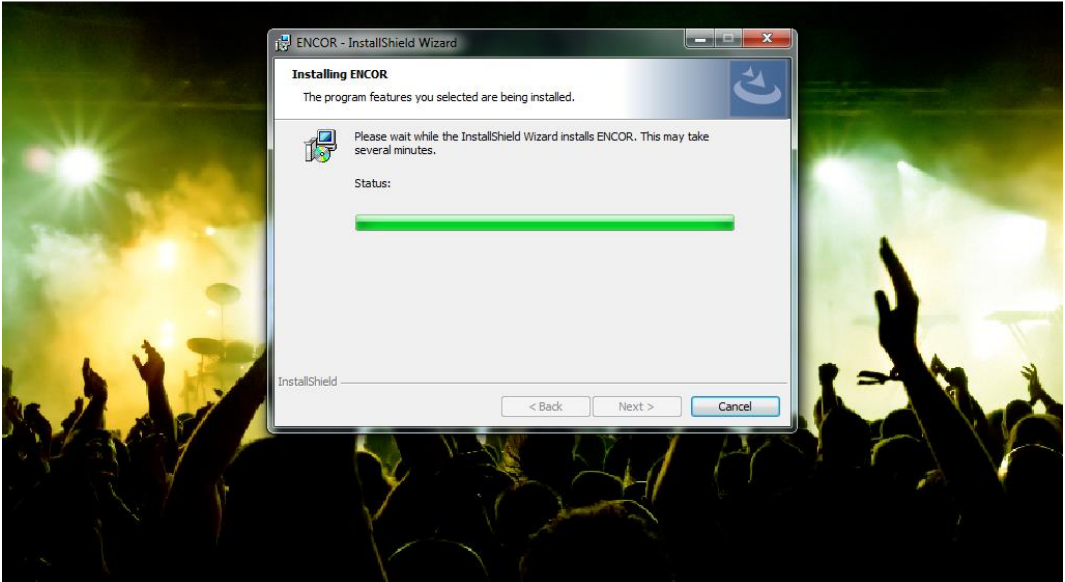


Figure 2-28. ENCOR Setup - ENCOR Installed

28. If Server was selected as the installation type, the selected databases are deployed to this computer. If **Client** was selected, no databases are deployed and this screen is not displayed. No action is necessary at this time.

ENCOR Office Installation

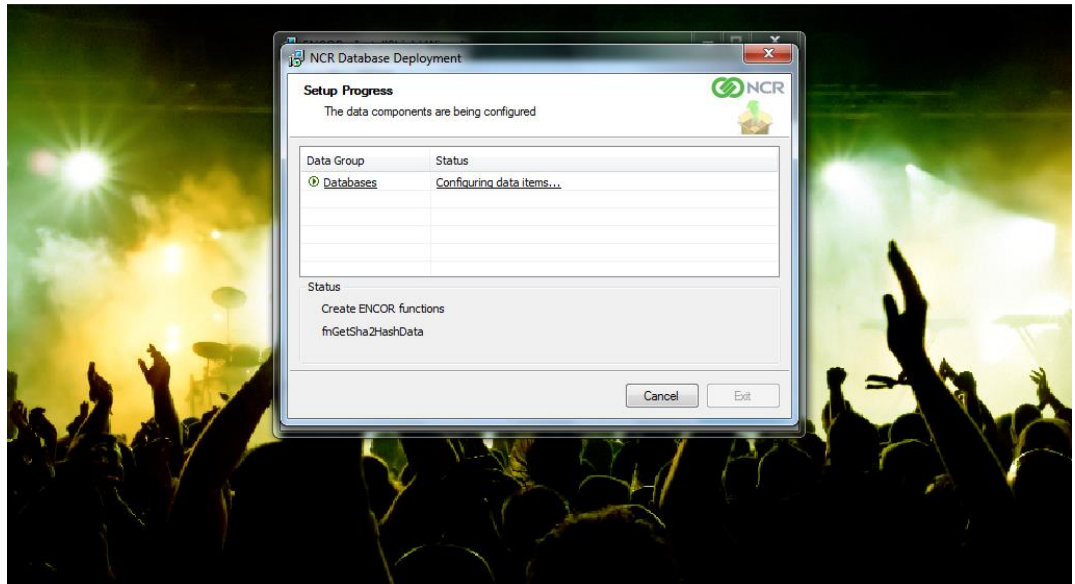


Figure 2-29. ENCOR Setup - ENCOR Database Deployed

29. Click **Finish**.

ENCOR Office Installation

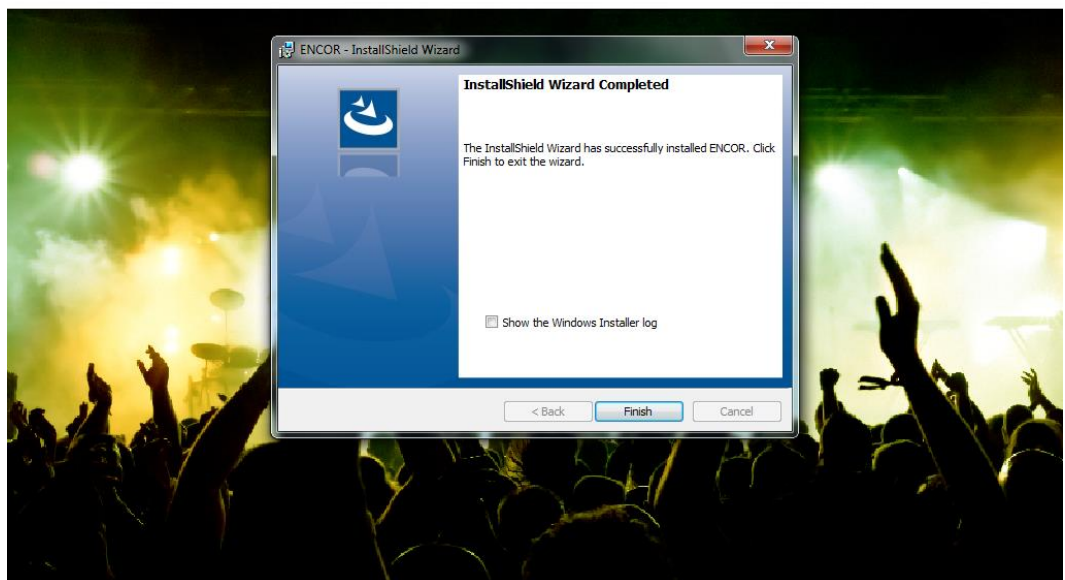
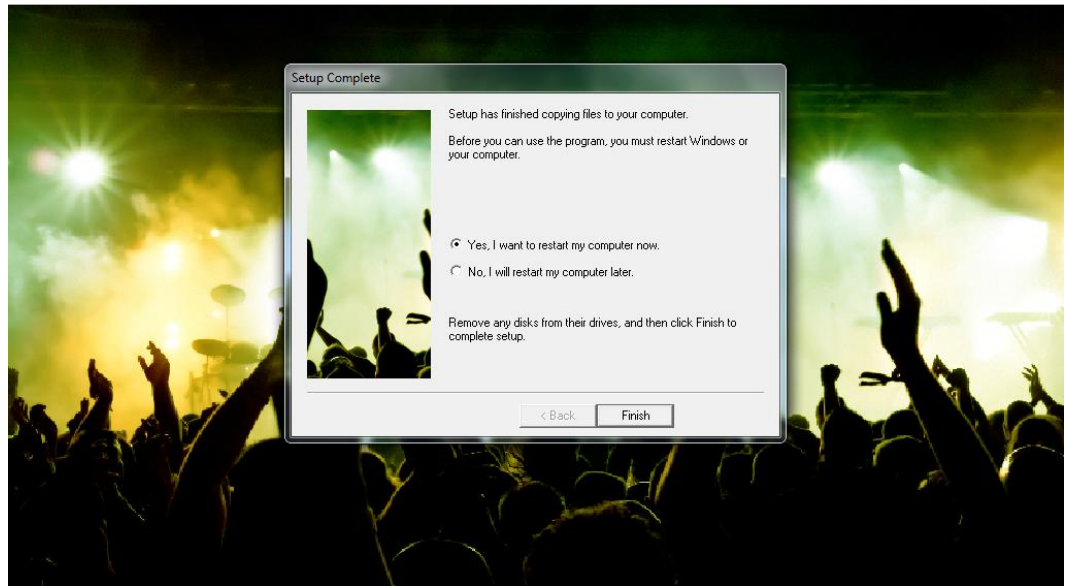


Figure 2-30. ENCOR Setup - Install ShieldWizard Completed

30. Click **Finish** to reboot the computer immediately or select **No** and click **Finish** to reboot manually at a later time. The HASP Plug may now be installed.
32. Installation complete. Re-boot.

ENCOR Office Installation



© 2017 NCR
All Rights Reserved
ENCOR is a trademark of NCR

commerce made complete

Figure 2-31. ENCOR Setup - Setup Complete

Note:

Select **ENCOR** on the desktop after re-boot and enter credentials as on the MFS1.

Chapter 3: Verify IIS Connection

Note:

The steps below can be performed on any **ENCOR** server (machine where the **ENCOR** database resides) to verify the IIS installation, but are only required for **ENCOR** servers running Windows Server 2008 Standard.

1. Open Internet Explorer and paste the following URL into the address textbox and press **Enter**.

<http://localhost/ENCORAPI/api/login?userName=admin&encryptedPwd=8C6976E5B5410415BDE908BD4DEE15DFB167A9C873FC4BB8A81F6F2AB448A918>

Note:

Recommend using Chrome for testing as Microsoft Internet Explorer security setting can prohibit the URL from being resolved correctly.

2. If **ENCOR** returns a message stating that the login was unsuccessful no future action is necessary.

This XML file does not appear to have any style information associated with it. The document tree is shown below.

```
<ArrayOfKeyValueOfstringstring xmlns:i="http://www.w3.org/2001/XMLSchema-instance" xmlns="http://schemas.microsoft.com/2003/10/Serialization/Arrays">
  <KeyValueOfstringstring>
    <Key>IsLocked</Key>
    <Value>False</Value>
  </KeyValueOfstringstring>
  <KeyValueOfstringstring>
    <Key>RequiresPasswordChange</Key>
    <Value>False</Value>
  </KeyValueOfstringstring>
  <KeyValueOfstringstring>
    <Key>IsValid</Key>
    <Value>False</Value>
  </KeyValueOfstringstring>
  <KeyValueOfstringstring>
    <Key>ReturnMessage</Key>
    <Value>Please enter valid credentials. 4 attempts left.</Value>
  </KeyValueOfstringstring>
</ArrayOfKeyValueOfstringstring>
```

Figure 3-1. Unsuccessful Login Message

3. If an error is produced and the URL does not successfully connect to **ENCOR** navigate to the C:\NCR\ENCOR\WebAPI\Web.config and open the configuration file using a ASCII text editor such as Notepad.
4. Find the <modules> element in the XML.

```
</httpModules>
</system.web>
<system.webServer>
  <handlers accessPolicy="Read, Script">
    <remove name="ExtensionlessUrlHandler-Integrated-4.0" />
    <remove name="OPTIONSVerbHandler" />
    <remove name="TRACEVerbHandler" />
    <add name="ExtensionlessUrlHandler-Integrated-4.0" path="*" verb="*" type="System.Web.Handlers.TransferRequestHandler" preCondition="integratedMode,runtimeVersionv4.0" />
  </handlers>
  <validation validateIntegratedModeConfiguration="false" />
  <modules>
    <remove name="ApplicationInsightsWebTracking" />
    <add name="ApplicationInsightsWebTracking" type="Microsoft.ApplicationInsights.Web.ApplicationInsightsHttpModule, Microsoft.AI.Web" preCondition="managedHandler" />
  </modules>
  <directoryBrowse enabled="false" />
</system.webServer>
<runtime>
  <assemblyBinding xmlns="urn:schemas-microsoft-com:asm-v1">
    <dependentAssembly>
      <assemblyIdentity name="Newtonsoft.Json" culture="neutral" publicKeyToken="30ad4fe6b2a6aeed" />
      <bindingRedirect oldVersion="0.0.0.0-6.0.0.0" newVersion="6.0.0.0" />
    </dependentAssembly>
    <dependentAssembly>
      <assemblyIdentity name="System.Web.Optimization" publicKeyToken="31bf3856ad364e35" />
      <bindingRedirect oldVersion="1.0.0.0-1.1.0.0" newVersion="1.1.0.0" />
    </dependentAssembly>
  </runtime>
```

Figure 3-2. Web.config XML - <modules>

5. Create a backup of the `web.config` file, then replace the `<modules>` element with the text below.

```
<modules runAllManagedModulesForAllRequests="true">
  <remove name="ApplicationInsightsWebTracking" />
  <add name="ApplicationInsightsWebTracking"
type="Microsoft.ApplicationInsights.Web.ApplicationInsightsHttpModule,
Microsoft.AI.Web" precondition="managedHandler" />
  <remove name="UrlRoutingModule" />
</modules>
```

6. The `<modules>` element should now look like the image below in the `web.config` file.



```
<handlers>
  <remove name="ExtensionlessUrlHandler-Integrated-4.0" />
  <remove name="OPTIONSVerbHandler" />
  <remove name="TRACEVerbHandler" />
  <add name="ExtensionlessUrlHandler-Integrated-4.0" path="*.*" verb="*" type="System.Web.Handlers.TransferRequestHandler" precondition="integratedMode, runtimeVersion4.0" />
</handlers>
<validation validateIntegratedModeConfiguration="false" />
<modules runAllManagedModulesForAllRequests="true">
  <remove name="ApplicationInsightsWebTracking" />
  <add name="ApplicationInsightsWebTracking" type="Microsoft.ApplicationInsights.Web.ApplicationInsightsHttpModule, Microsoft.AI.Web" precondition="managedHandler" />
  <remove name="UrlRoutingModule" />
</modules>
</system.webServer>
<runtime>
  <assemblyBinding xmlns="urn:schemas-microsoft-com:asm.v1">
    <dependentAssembly>
      <assemblyIdentity name="Newtonsoft.Json" culture="neutral" publicKeyToken="30ad4fe6b2a6aaed" />
      <bindingRedirect oldVersion="0.0.0.0-6.0.0.0" newVersion="6.0.0.0" />
    </dependentAssembly>
    <dependentAssembly>
      <assemblyIdentity name="System.Web.Optimization" publicKeyToken="31bf3856ad364e35" />
      <bindingRedirect oldVersion="1.0.0.0-1.1.0.0" newVersion="1.1.0.0" />
    </dependentAssembly>
  </assemblyBinding>
</runtime>
```

Figure 3-3. Web.config XML - `<modules>` Updated

7. Save the changes to the `web.config` file and restart the **ENCOR** server. Repeat Steps 1 and 2. You should now see a message like the image in Step 2 stating that the login was invalid.