

ENCOR

■ Installation Guide — LFS

■ Version 1.0.1.3



ENCOR LFS Installation Guide

Date of Issue	Product ID Num.	Part Number	Brief Description
December 2017	45002/032	89000908	1.0.0.0 Release
January 2018	45002/032	89000923	1.0.0.0 Release (Updated)
April 2019	45002/032	89000939	1.0.1.3 Release

© Copyright NCR Corporation 1995-2019
All rights reserved

This publication is protected by federal copyright law. This document and its contents are the proprietary, confidential information and property of NCR Corporation ("NCR"). Unauthorized disclosure, reproduction, distribution or use of this document and/or its contents in any form is strictly prohibited. No part of this publication may be reproduced or transmitted into any human or computer language in any form or by any means, stored in a retrieval system, transmitted, redistributed, translated or disclosed to third parties, or de-compiled in any way including, but not limited to, photocopy, photograph, electronic, mechanical, magnetic or manual without the express written permission of NCR or its licensors, if any. This document, notwithstanding the above, may be distributed in electronic or printed form by NCR to personnel who are employed by either (a) a licensee and end user of the subject system of this document or (b) personnel from an authorized NCR Channel Partner or Solution Provider of the subject system of this document. All copies of this document so distributed and/or so authorized, shall contain a full copy of this copyright notice.

NCR has prepared this document as a guide to the proper installation, operation, customization and/or maintenance of NCR products. The drawings and specifications contained herein are the property of NCR and/or its licensors.

NCR endeavors to ensure that the information in this document is correct and fairly stated but does not accept liability for any error or omission. NCR makes no representation or warranties with respect to the contents hereof, and specifically disclaims any implied warranties of merchantability or fitness for a particular purpose or non-infringement. No commitments by NCR or its suppliers are made by or from this documentation which is provided for information only.

Development of NCR products and documentation is continuous: NCR reserves the right to revise this publication and to make changes at any time to the contents hereof or to the products herein described or discussed without notice and without any obligation for NCR to notify any person or organization of such revision or changes. Information published in this document will likely be superseded, and it is recommended that users regularly check for updates and newer versions.

The trademarks NCR, Retailix, StoreNext, ISS45, ScanMaster, R10, ACS, PocketOffice, RPO, RBO, ABO, Connected Payments, ServerEPS, Connected Services, Connected Loyalty, WinEPS and all other NCR product names are registered trademarks or trademarks of NCR; all other trademarks or registered trademarks are the property of their respective owners. Third-party products, services, or company names referenced in this document may be trademarked or copyrighted by their respective owners, and are for identification purposes only. Copyrights, trademarks and license agreements shall be governed and construed in accordance with the laws of the State of New York and the Federal Arbitration Act, and shall benefit NCR, its successors, and assigns.

Address comments and corrections regarding this document to:

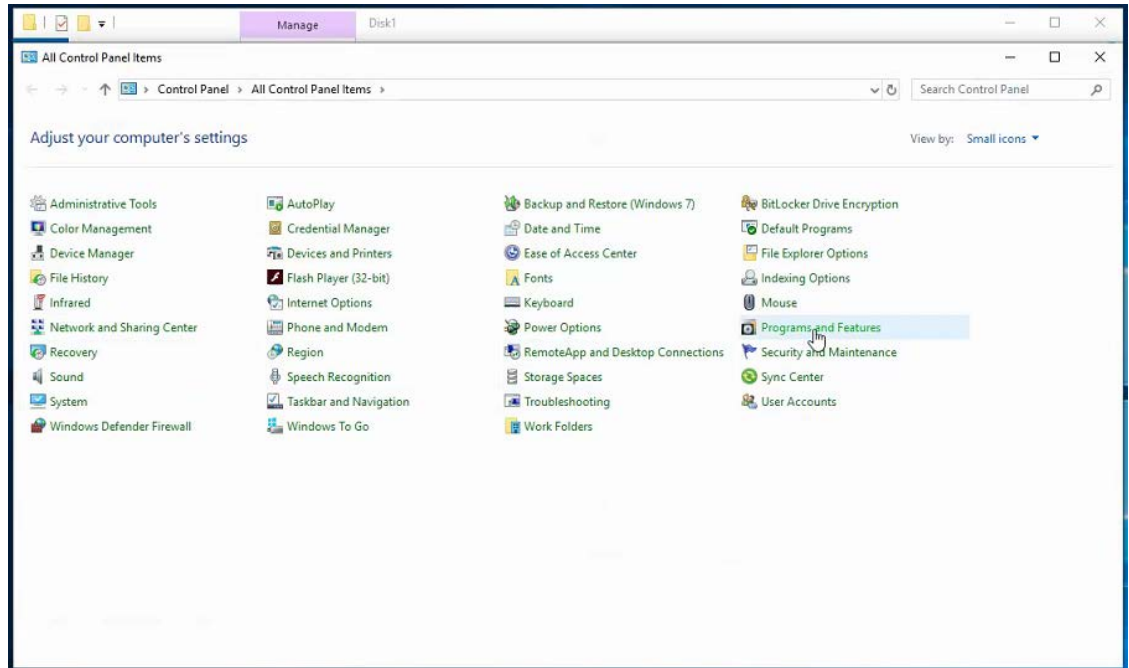
Attn: Software Program Director
NCR
864 Spring Street
Atlanta, GA 30308

Table of Contents

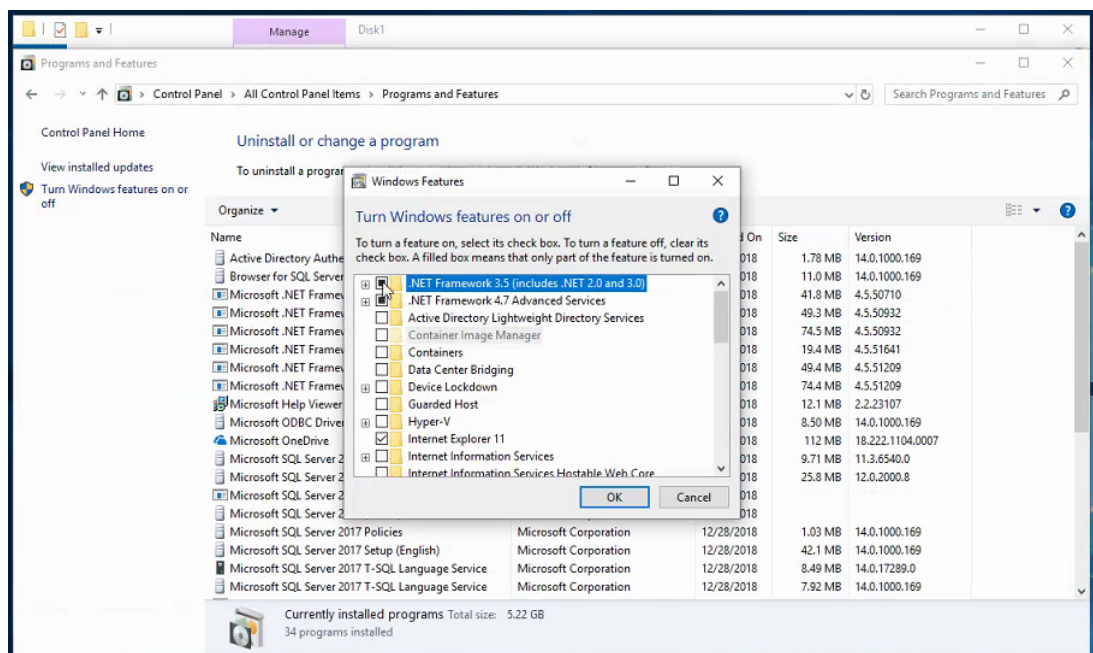
<i>Chapter 1:</i> Preinstallation Setup.....	1-1
<i>Chapter 2:</i> ENCOR LFS Installation	2-1
<i>Chapter 3:</i> Post Installation.....	3-1

Chapter 1: Preinstallation Setup

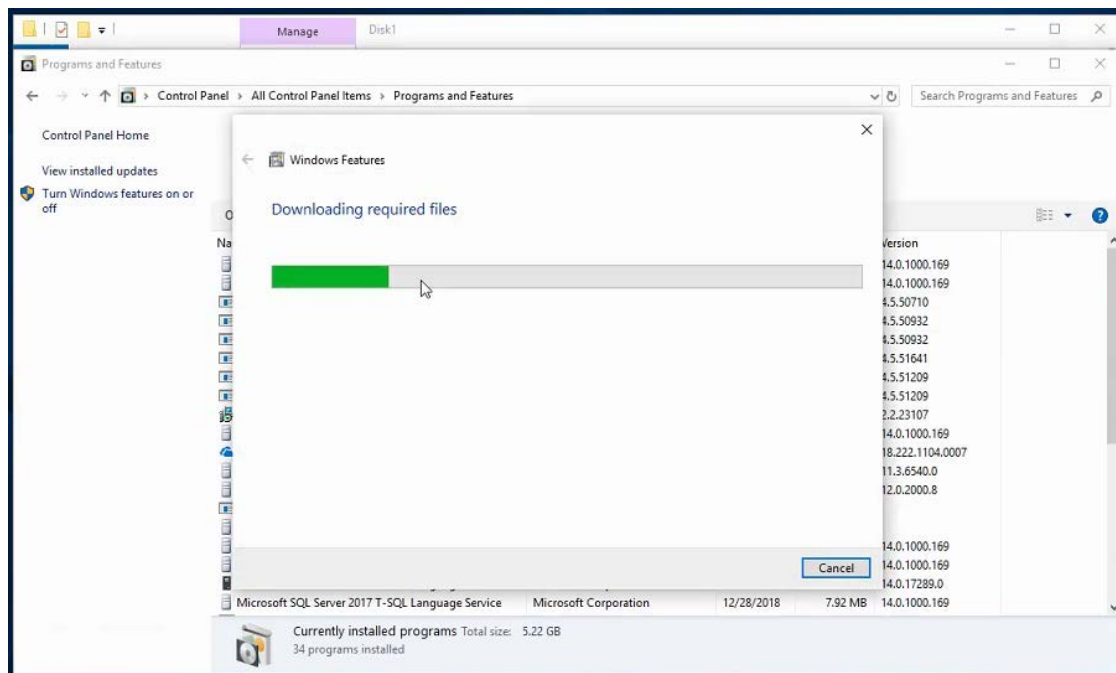
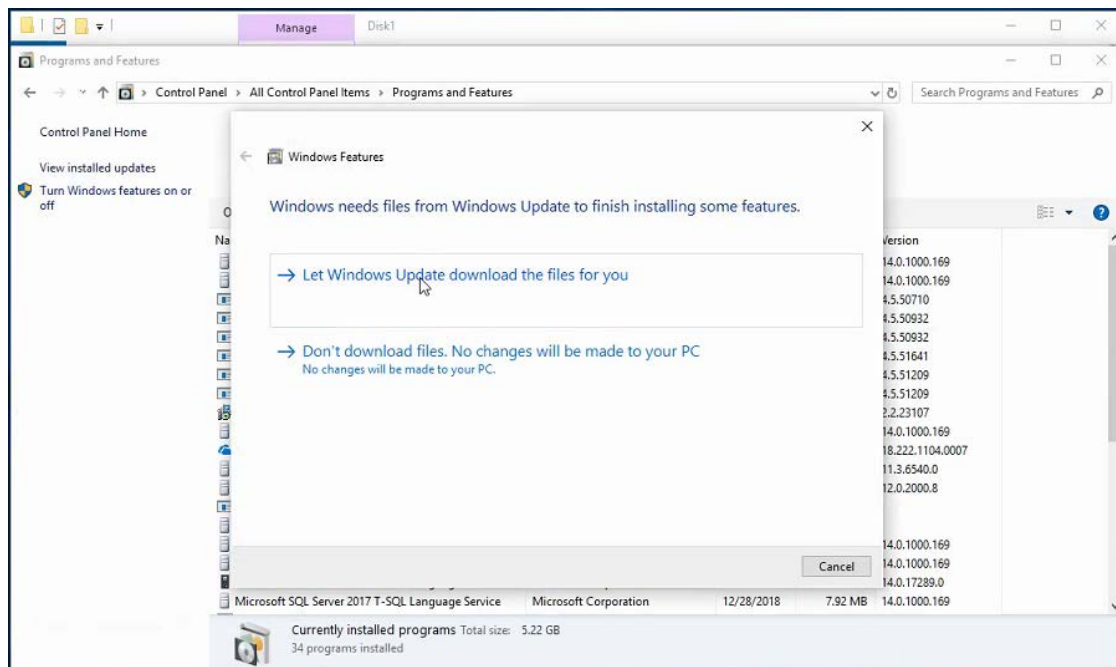
1. Before Installing ENCOR, the Dot Net 3.5 feature needs installed. To install, go to Control Panel and Program Features



- Click on Turn Windows features on or off and .NET Framework 3.5 (includes .NET 2.0 and 3.0)



Select Let Windows Updated download the files for you



Chapter 2: ENCOR LFS Installation

Note:

The LFSs do *not* require SQL to be installed. The LFS machines connect to the MFS1 SQL database. The ENCOR Installation runs with elevated privileges. If installing on Windows Server 2008 R2/Windows 7, the Windows user used to run the ENCOR installation is required to be a user that belongs to the Windows Administrators group. If installing on Server 2012 R2/Windows 10/Windows Server 2016 using a non-administrator user, the user name and password of a user that belongs to the Administrators group will be required to run the installation. In the example below the installation is being ran as ENCOR User who is part of the Windows Administrators group.

1. Go to the installation source and open the FrontOffice folder.

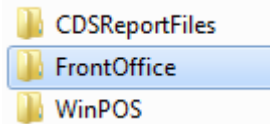


Figure 2-1. FrontOffice Folder

2. Select **Disk1**.

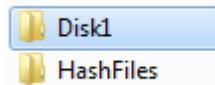


Figure 2-2. FrontOffice > Disk1

3. Double click `setup.exe`.

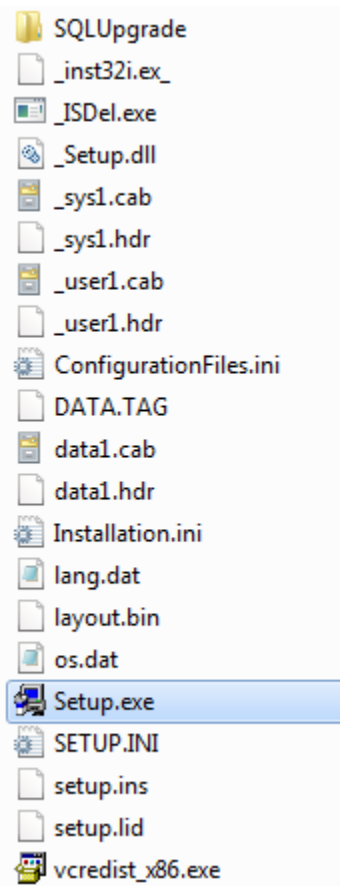


Figure 2-3. FrontOffice > Disk1 > Setup

4. Installation begins.

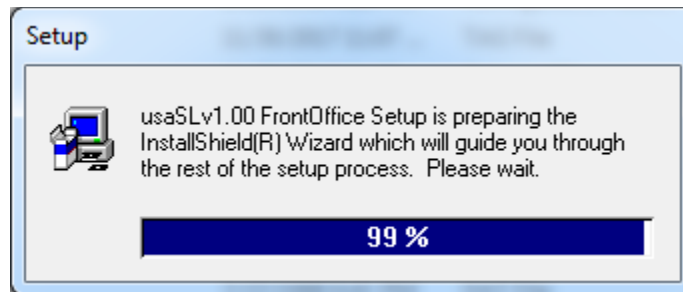
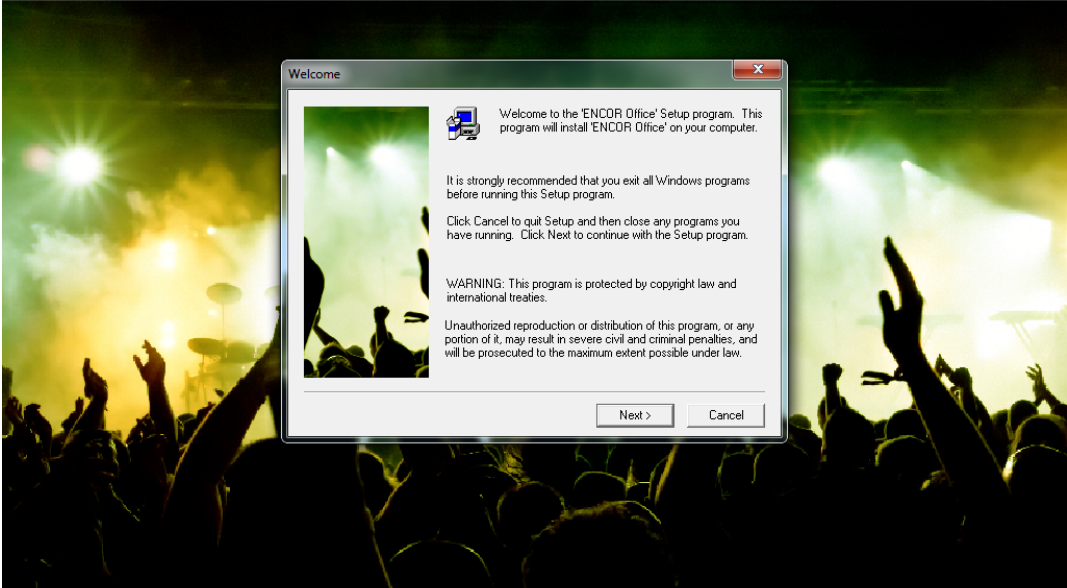


Figure 2-4. Installation Begins

5. Click on **Next**.

ENCOR Office Installation



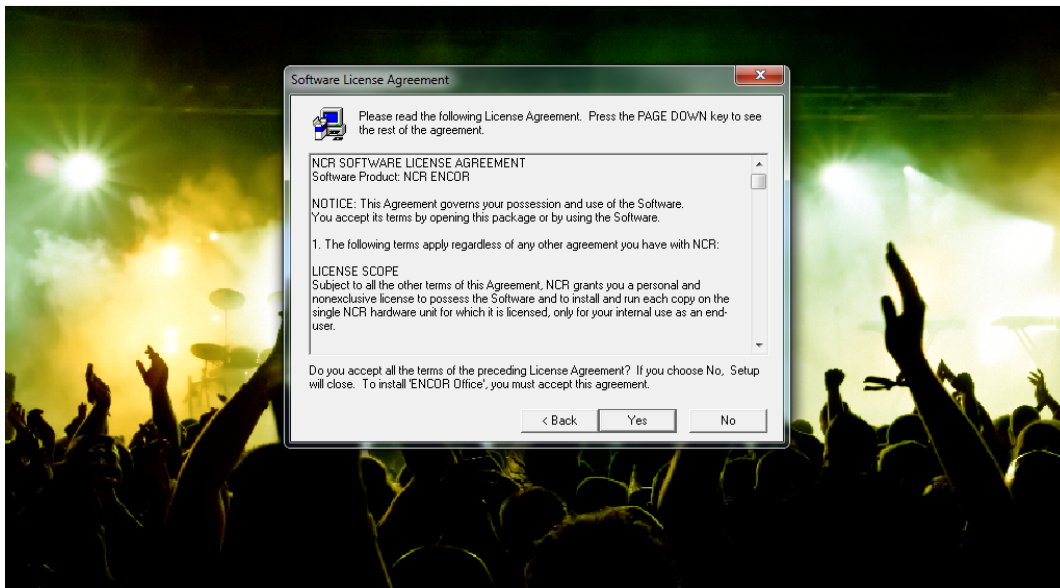
© 2017 NCR
All Rights Reserved
ENCOR is a trademark of NCR

commerce made complete

Figure 2-5. ENCOR Setup - Welcome

6. Click on **Yes** for the License Agreement.

ENCOR Office Installation



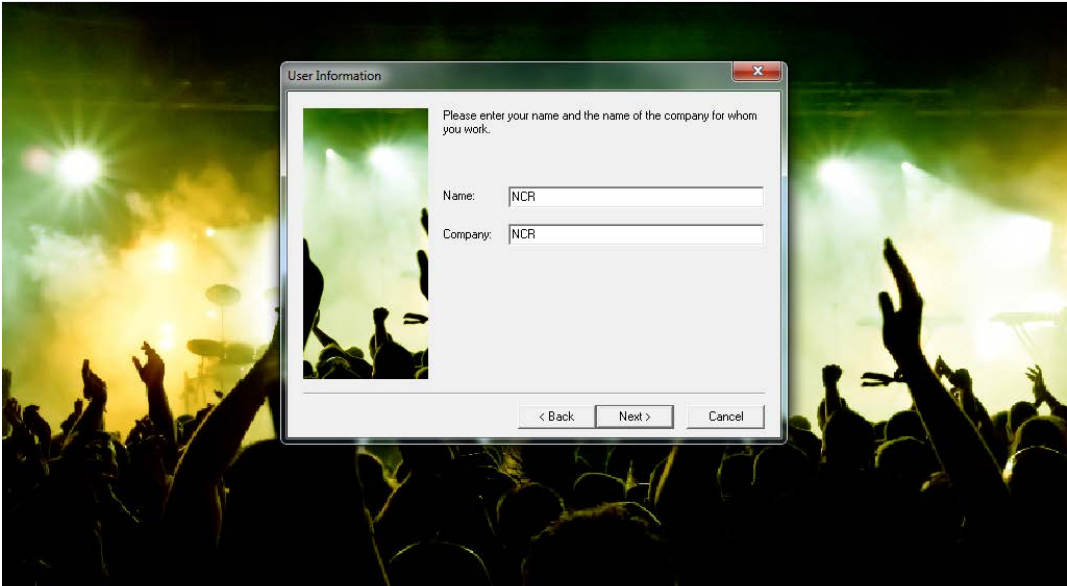
© 2017 NCR
All Rights Reserved
ENCOR is a trademark of NCR

commerce made complete

Figure 2-6. ENCOR Setup - Software License Agreement

7. Enter the name of the LFS and company and then click **Next**.

ENCOR Office Installation



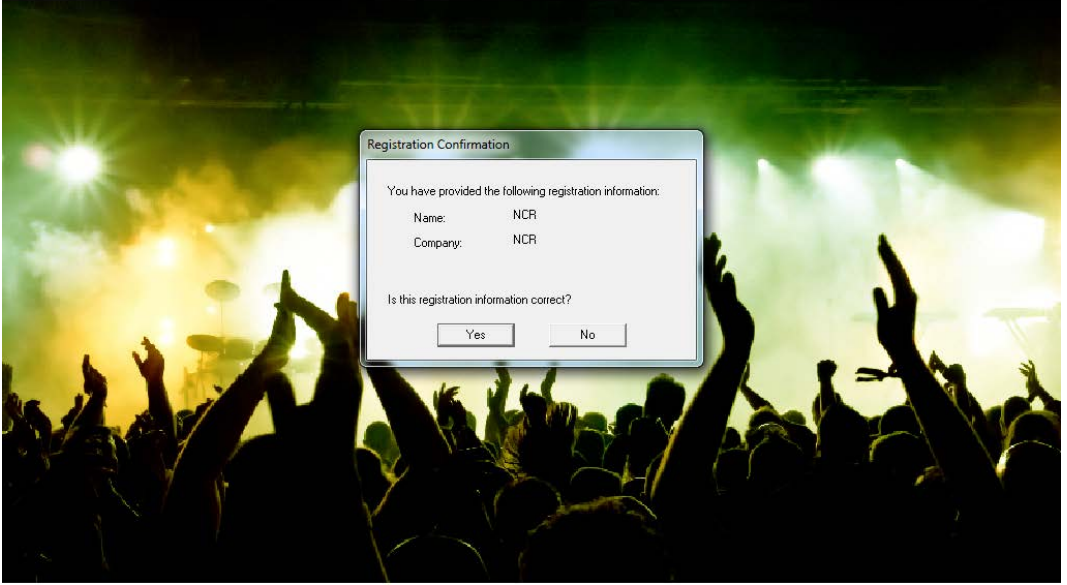
© 2017 NCR
All Rights Reserved
ENCOR is a trademark of NCR

commerce made complete

Figure 2-7. ENCOR Setup - User Information

- 8. Confirm registration information and click **Yes**.

ENCOR Office Installation



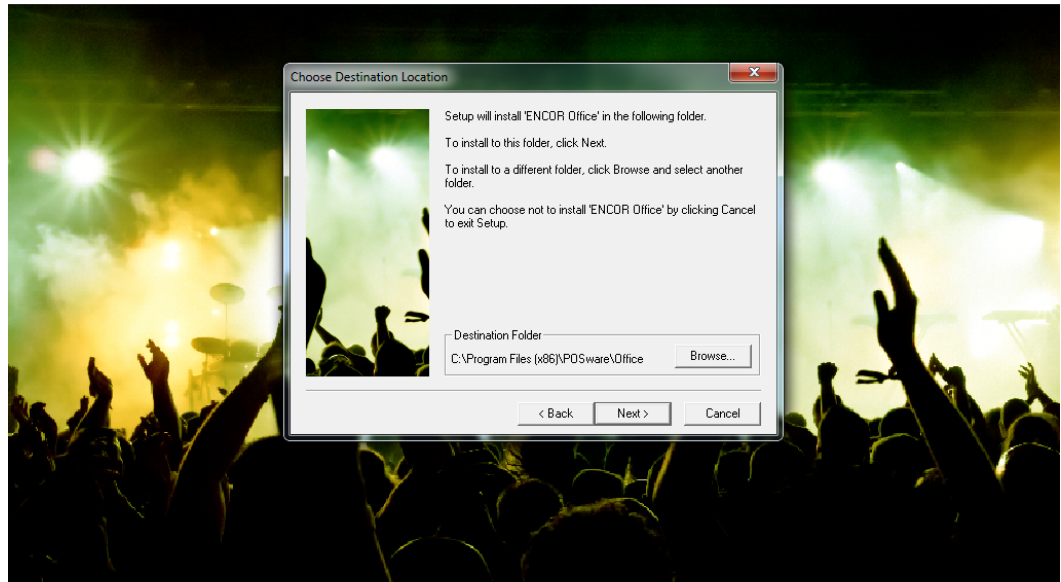
© 2017 NCR
All Rights Reserved
ENCOR is a trademark of NCR

commerce made complete

Figure 2-8. ENCOR Setup - Registration Confirmation

9. Click **Next**.

ENCOR Office Installation



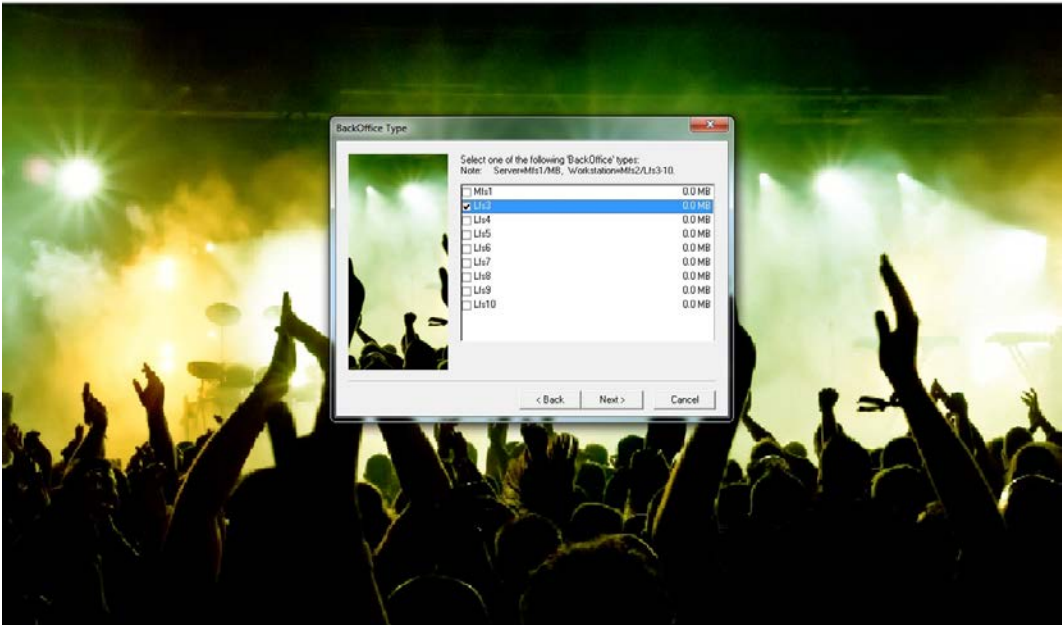
© 2017 NCR
All Rights Reserved
ENCOR is a trademark of NCR

commerce made complete

Figure 2-9. ENCOR Setup - Choose Destination Location

10. Select the LFS number being installed and then click **Next**.

ENCOR Office Installation



© 2017 NCR
All Rights Reserved
ENCOR is a trademark of NCR

commerce made complete

Figure 2-10. ENCOR Setup - BackOffice Type

11. Enter the Created User name and Password for the RSM Service (ex ENCOR User) then click **Next**.

ENCOR Office Installation
Version: 1.0.0.0-082

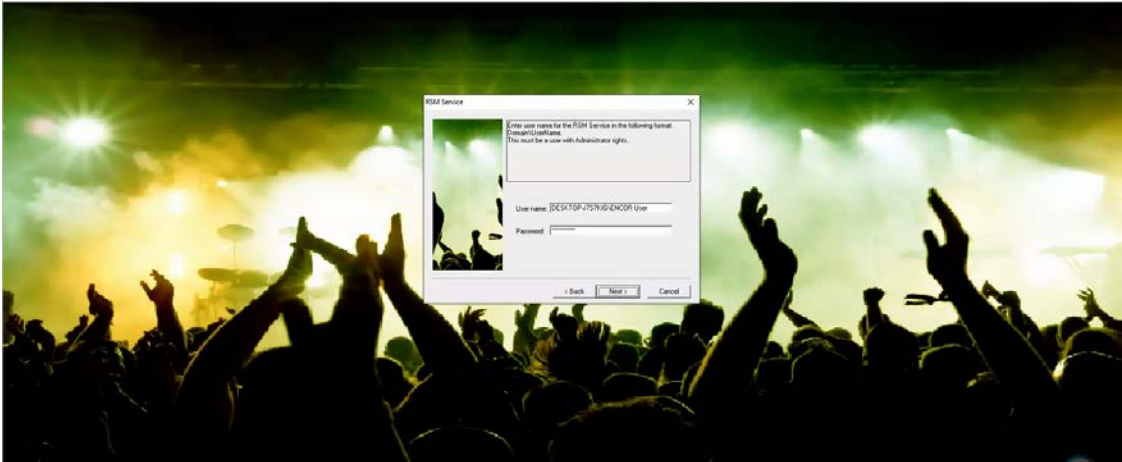
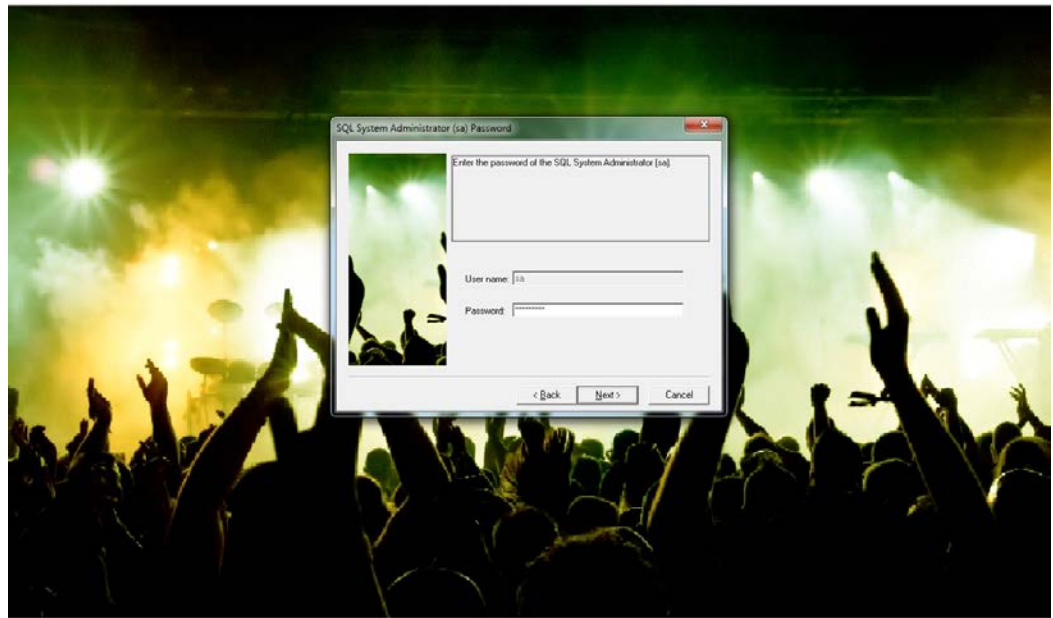


Figure 2-11. ENCOR Setup - RSM Service

12. Enter the SQL sa password you have set for SQL. This is required for the LFS to connect to the MFS1 database.

ENCOR Office Installation



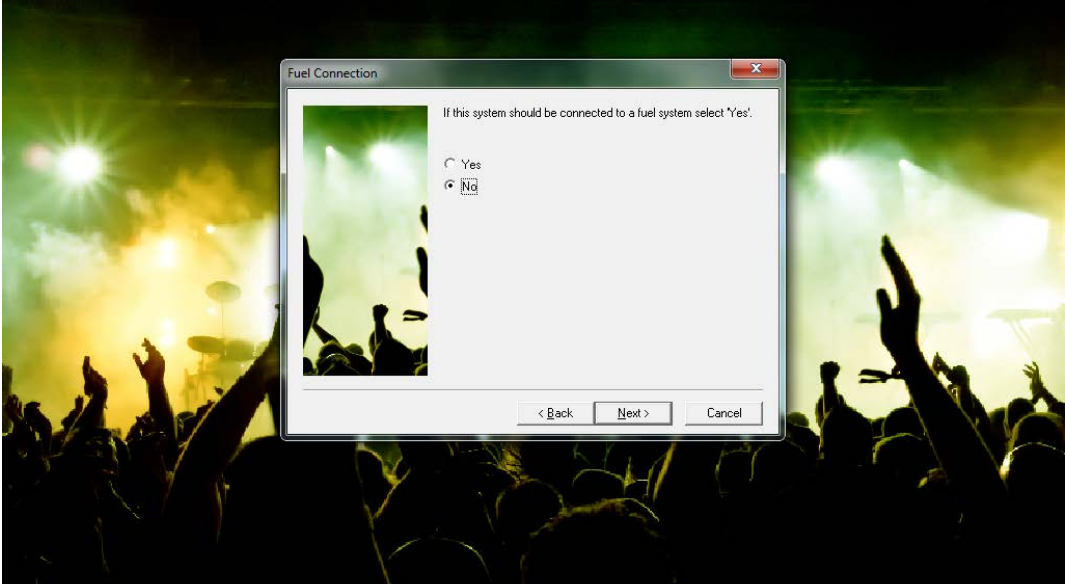
© 2017 NCR
All Rights Reserved
ENCOR is a trademark of NCR

commerce made complete

Figure 2-12. ENCOR Setup - SQL System Administrator (sa) Password

13. If no fuel in system, select **No**, and then click on **Next**.

ENCOR Office Installation



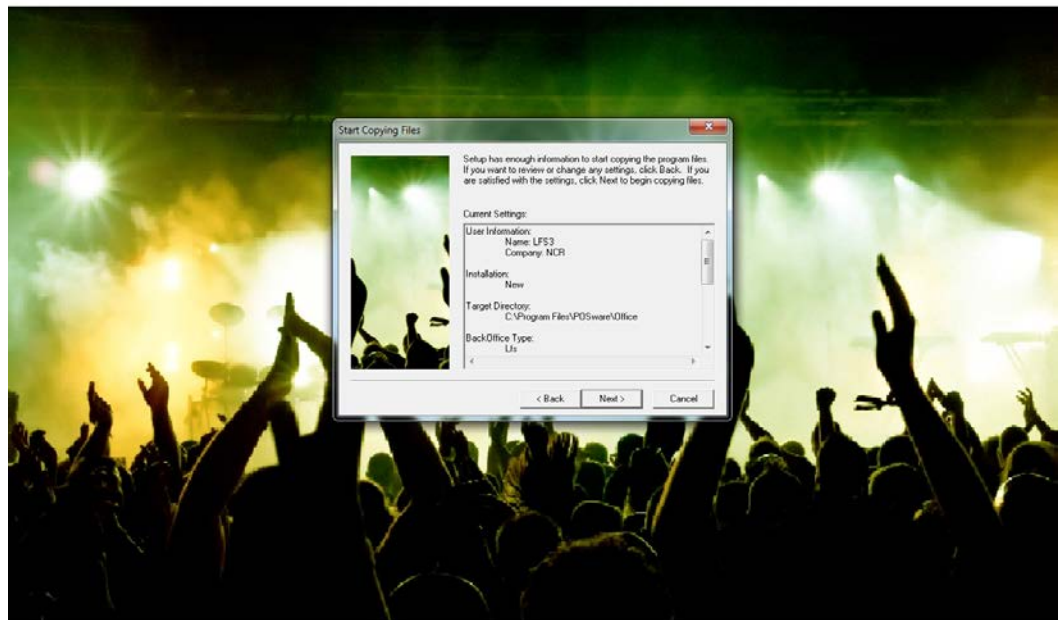
© 2017 NCR
All Rights Reserved
ENCOR is a trademark of NCR

commerce made complete

Figure 2-13. ENCOR Setup - Fuel Connection

14. Review the settings and click **Next**.

ENCOR Office Installation
Version: 1.0.0.0-040



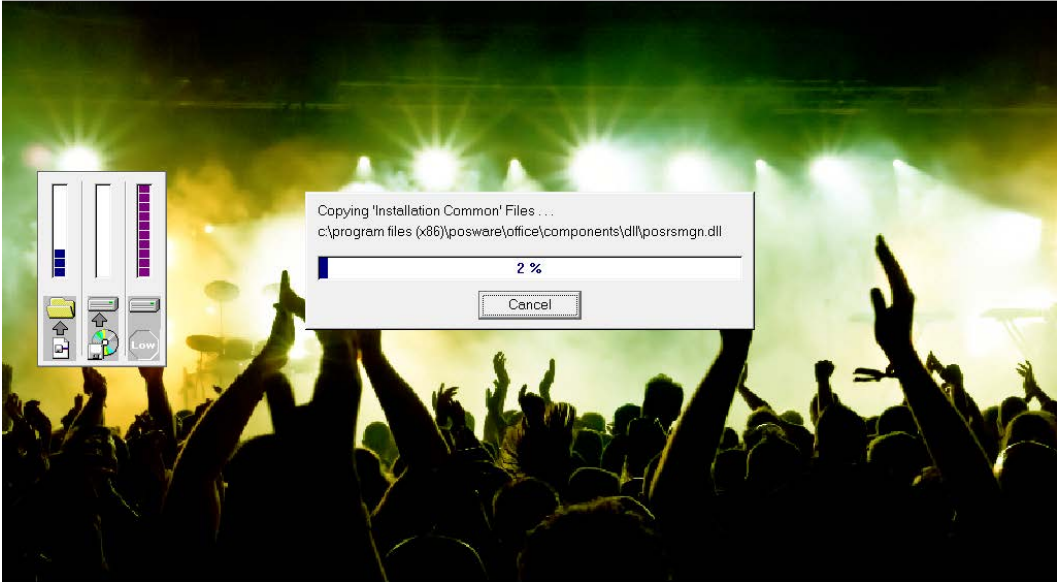
© 2017 NCR
All Rights Reserved
ENCOR is a trademark of NCR

commerce made complete

Figure 2-14. ENCOR Setup - Start Copying Files

15. Installation proceeds.

ENCOR Office Installation



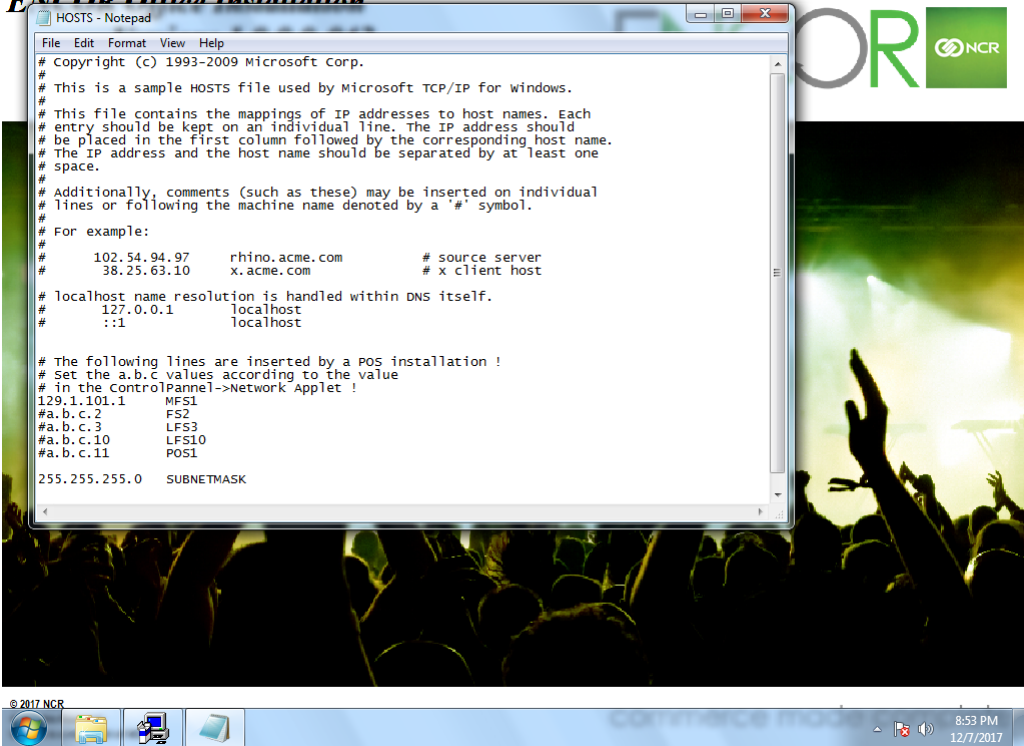
© 2017 NCR
All Rights Reserved
ENCOR is a trademark of NCR

commerce made complete

Figure 2-15. ENCOR Setup - Installation Proceeds

16. Enter the HOSTS file to match the file on the MFS. Save the file and continue.

ENCOR Office Installation

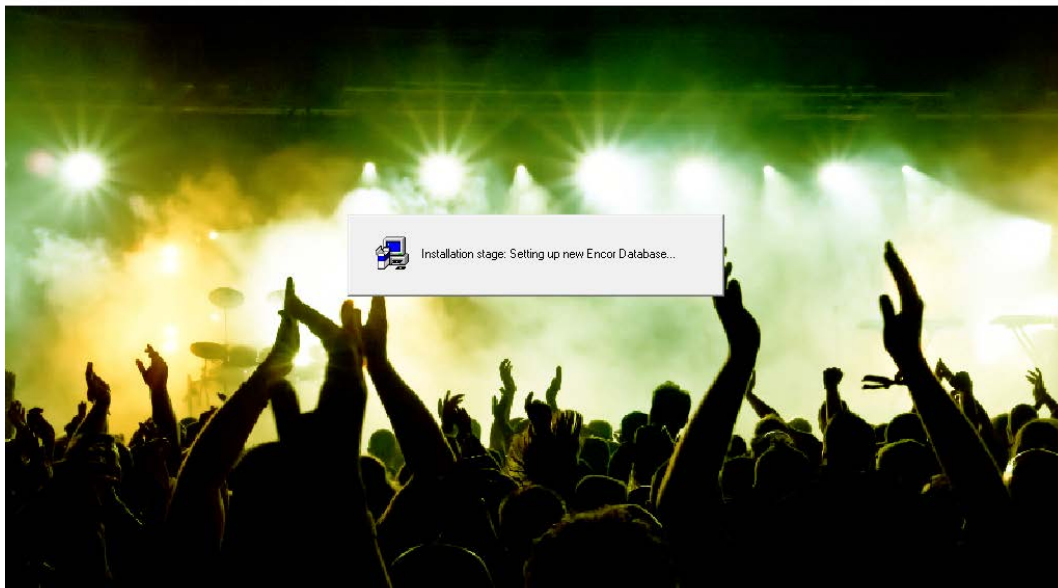


© 2017 NCR

Figure 2-16. ENCOR Setup - HOSTS File

17. The **ENCOR** database is deployed. No action is necessary at this time.

ENCOR Office Installation



© 2017 NCR
All Rights Reserved
ENCOR is a trademark of NCR

commerce made complete

Figure 2-17. ENCOR Setup – ENCOR Database

18. Click **Next**. Note that beginning with this point, if the installer is canceled, critical **ENCOR** components will not be installed, causing the application to not be able to run correctly.

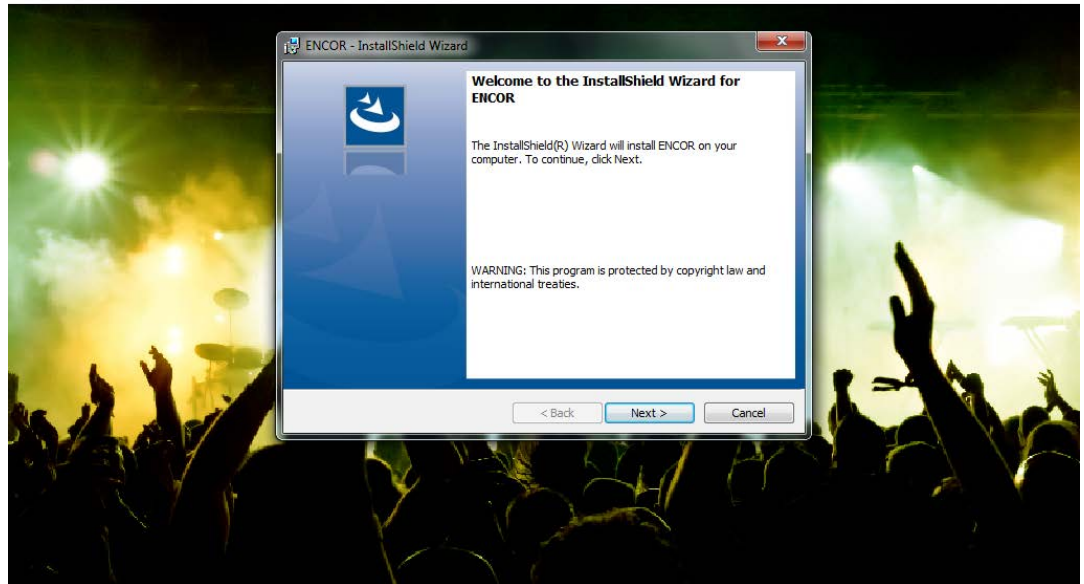
ENCOR Office Installation

Figure 2-18. ENCOR Setup - InstallShield Wizard

19. Select the **I accept the terms in the license agreement** radio button then click **Next**.

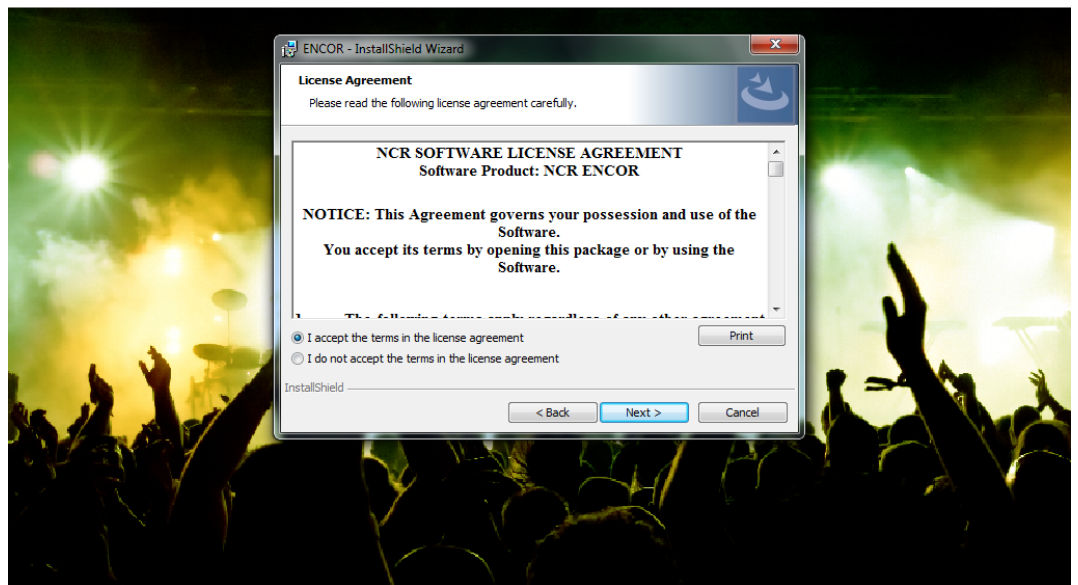
ENCOR Office Installation

Figure 2-19. ENCOR Setup - License Agreement

20. If this computer is to be the MFS only with the **ENCOR** and Back Office databases deployed elsewhere, select **Client**. If this computer is to house the

ENCOR and/or Back Office databases, select Server, select which databases are to be deployed on this system, then click **Next**.

Note:

On the MFS install, the FrontOff database is always deployed to this (the MFS) computer and will not be deployed on any other computer install such as LFS3. The **ENCOR** and Back Office databases need to be deployed only once each at a store. This installer allows the destinations of each to be user selectable. Deploying either the **ENCOR** or Back Office database to multiple computers at a store will cause issues.

Note:

One of or both the **ENCOR** and Back Office Server options must be selected when selecting the Server Installation Type. Should no databases be selected with the Server option, a message will appear stating the following:

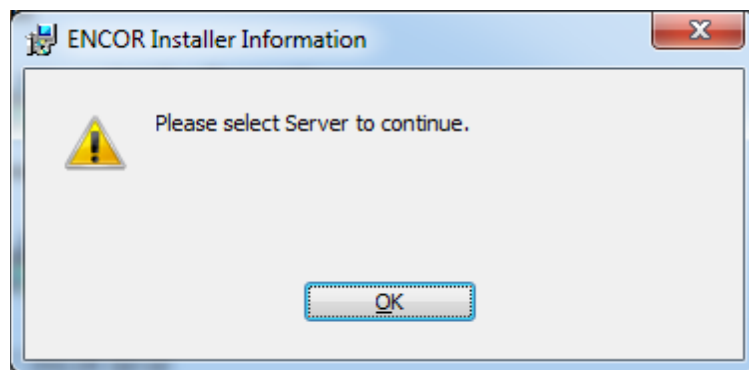


Figure 2-20. ENCOR Setup - ENCOR Installer Information

Should this appear, click **OK** to return to the Installation Type screen and select a database. If the **ENCOR** and/or Back Office databases are on a different computer, select the Client Installation Type.

ENCOR Office Installation

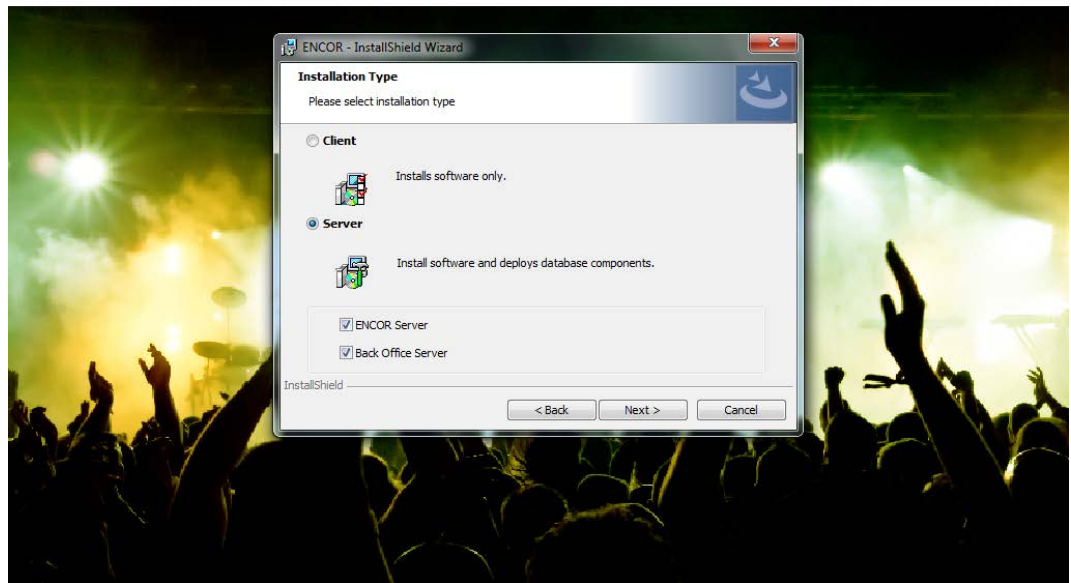


Figure 2-21. ENCOR Setup - Installation Type

21. Click **Install**.

ENCOR Office Installation

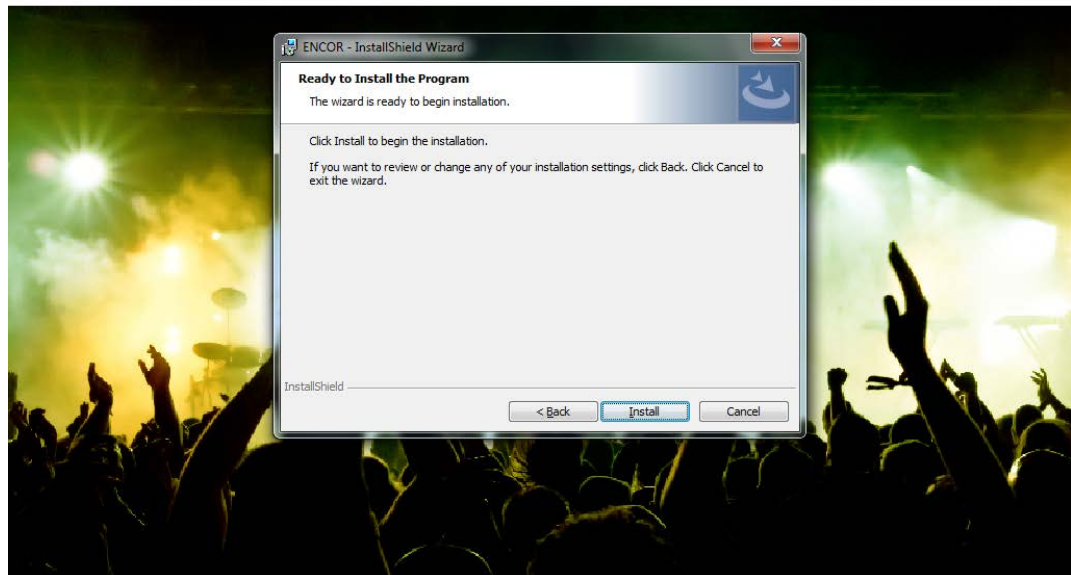


Figure 2-22. ENCOR Setup - Install Program

22. Program features are installed. No action is necessary at this time.

ENCOR Office Installation

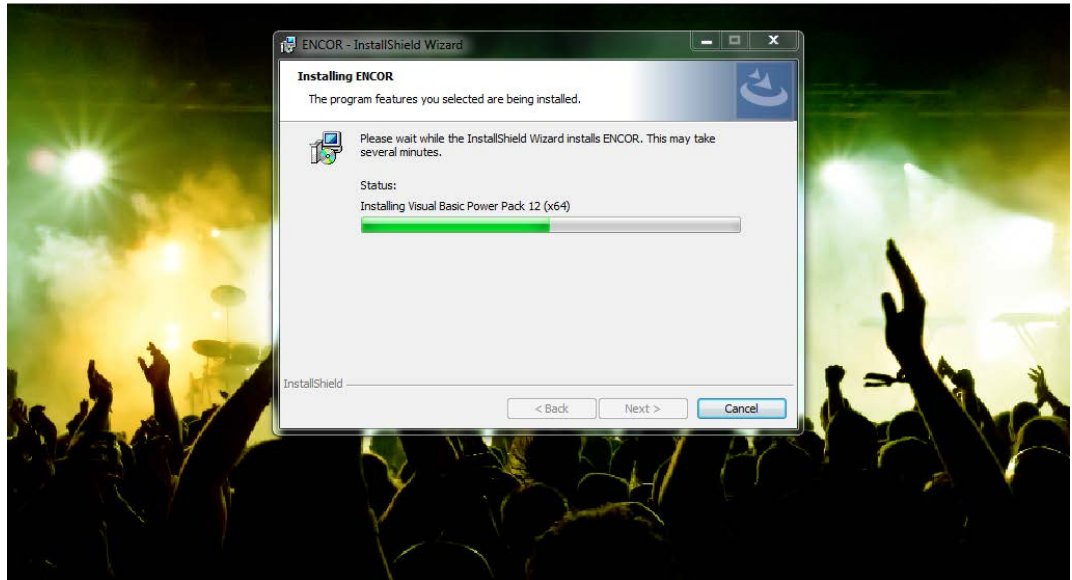


Figure 2-23. ENCOR Setup - Program Features

23. Select or enter the database server that is to have the **ENCOR** database then enter the Login ID and Password to connect to it. Note if the **ENCOR** database is already deployed or will be deployed to a different computer, this installation routine still requires that computer and login credentials be entered here. Click **Next** to continue.

ENCOR Office Installation

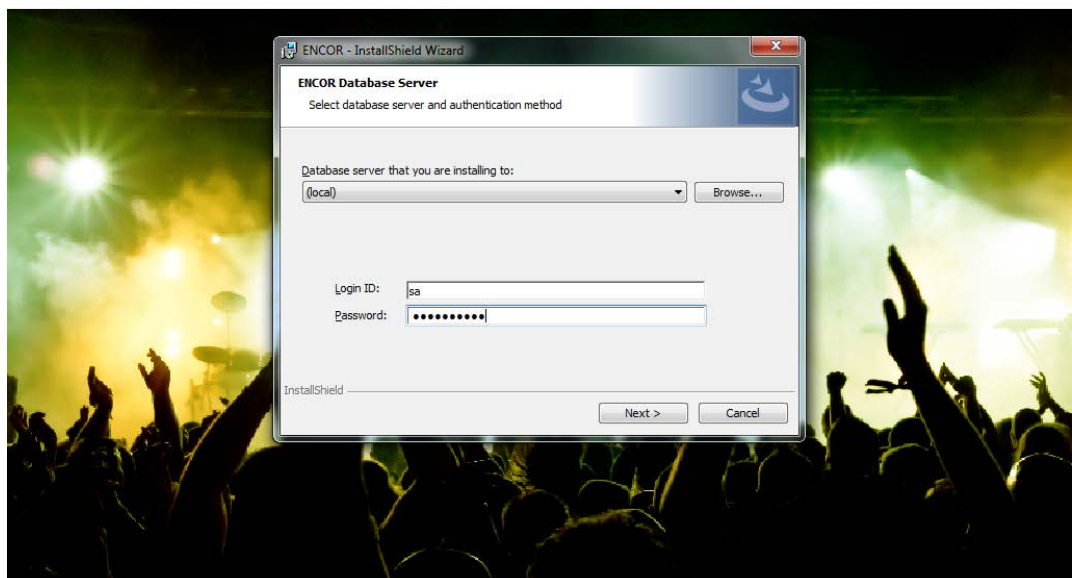


Figure 2-24. ENCOR Setup - ENCOR Database Credentials

24. Connectivity to the **ENCOR** database is verified if it was not selected to be deployed as part of this installation. If the installer cannot connect to the **ENCOR** database, the below error message is displayed. Click **Continue** to go back to the **ENCOR** Database Server screen to click the **Next** button to continue with the installation or click **Cancel** to re-enter the server, Login ID, and Password. If the installer can connect to the **ENCOR** database, this message is not displayed.

ENCOR Office Installation

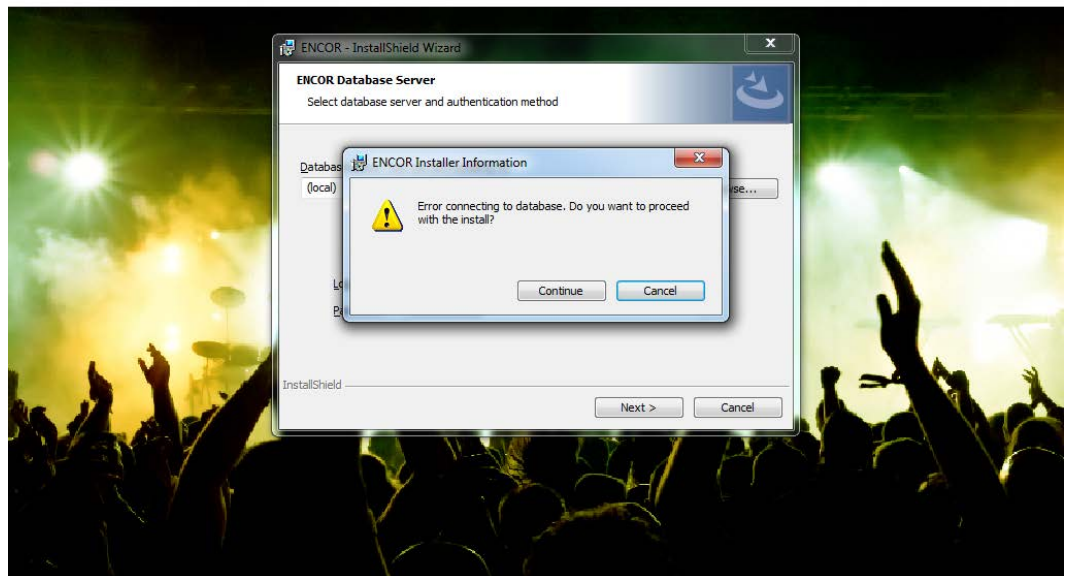


Figure 2-25. ENCOR Setup - ENCOR Database Connect Error

25. Select or enter the database server that is to have the Back Office database then enter the Login ID and Password to connect to it. Note if the Back Office database is deployed to a different computer, this installation routine still requires that computer and login credentials be entered here. Click **Next** to continue.

ENCOR Office Installation

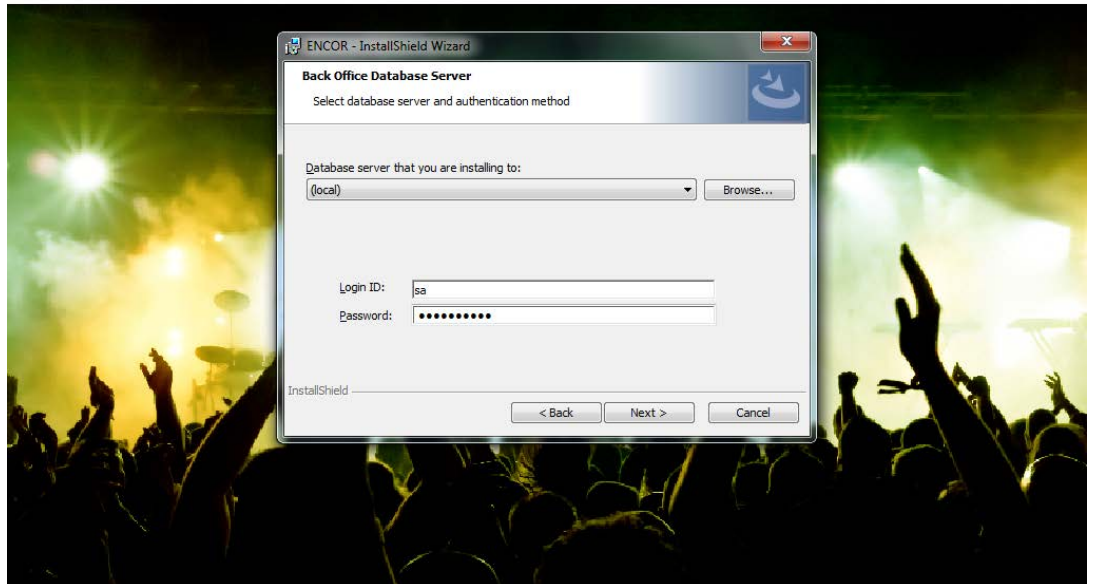


Figure 2-26. ENCOR Setup - Back Office Database Credentials

26. Connectivity to the Back Office database is verified if it was not selected to be deployed as part of this installation. If the installer cannot connect to the Back Office database, the below error message is displayed. Click **Continue** to go back to the Back Office Database Server screen to click **Next** to continue with the installation or click **Cancel** to re-enter the server, Login ID, and Password. If the installer can connect to the Back Office database, this message is not displayed.

ENCOR Office Installation

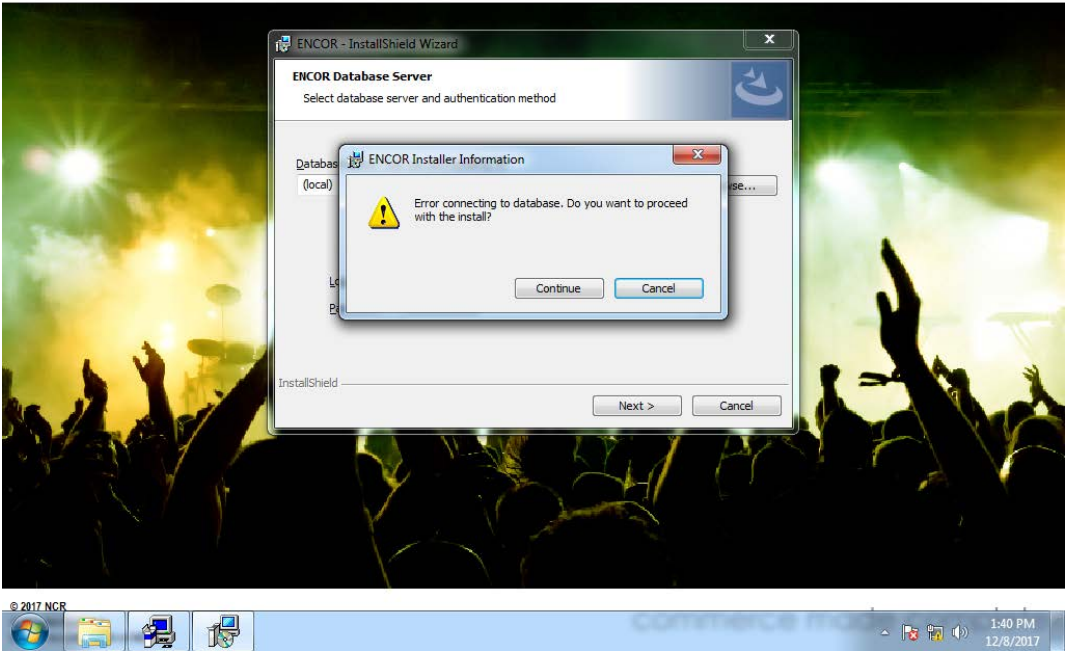


Figure 2-27. ENCOR Setup - Back Office Database Connect Error

27. Additional components of **ENCOR** are installed. No action is necessary at this time.

ENCOR Office Installation

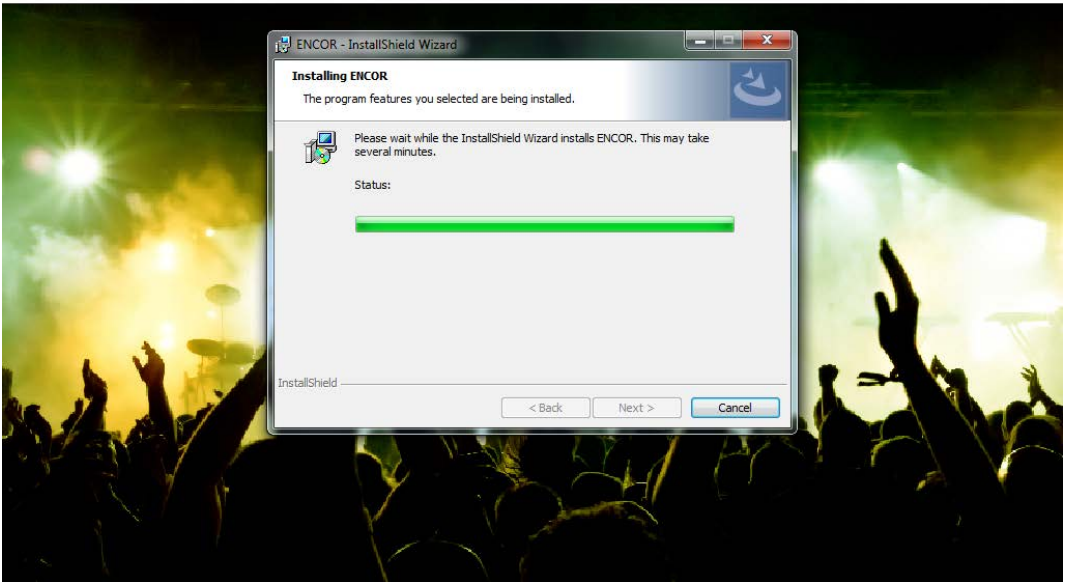


Figure 2-28. ENCOR Setup - ENCOR Installed

28. If Server was selected as the installation type, the selected databases are deployed to this computer. If **Client** was selected, no databases are deployed and this screen is not displayed. No action is necessary at this time.

ENCOR Office Installation

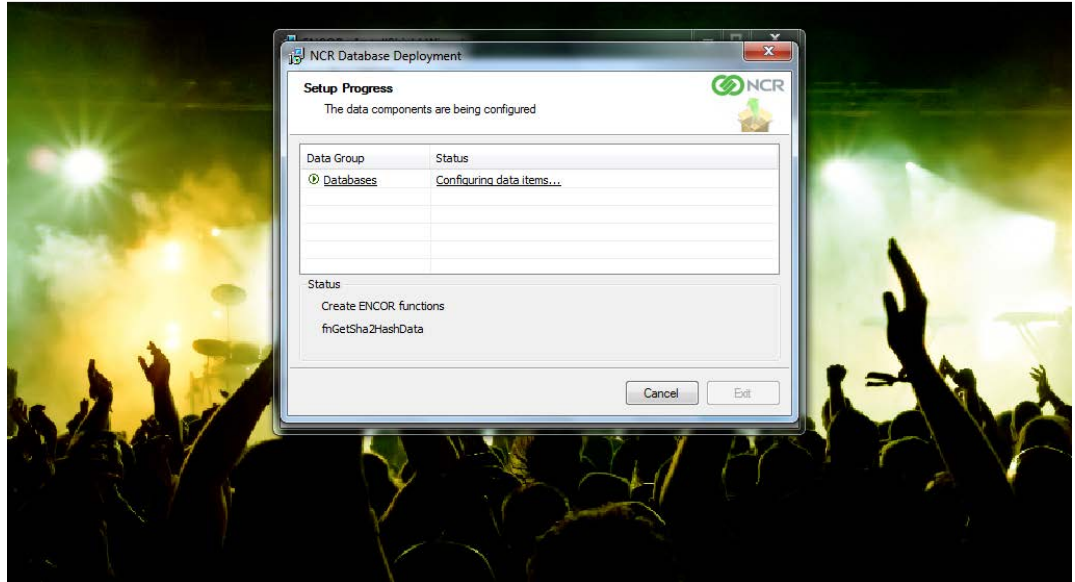


Figure 2-29. ENCOR Setup - ENCOR Database Deployed

29. Click **Finish**.

ENCOR Office Installation

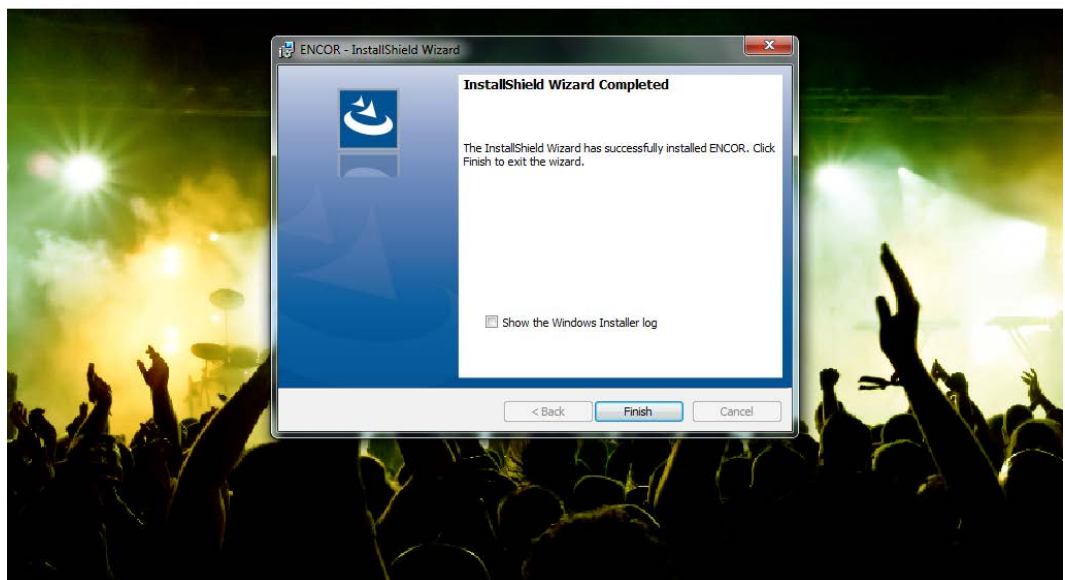
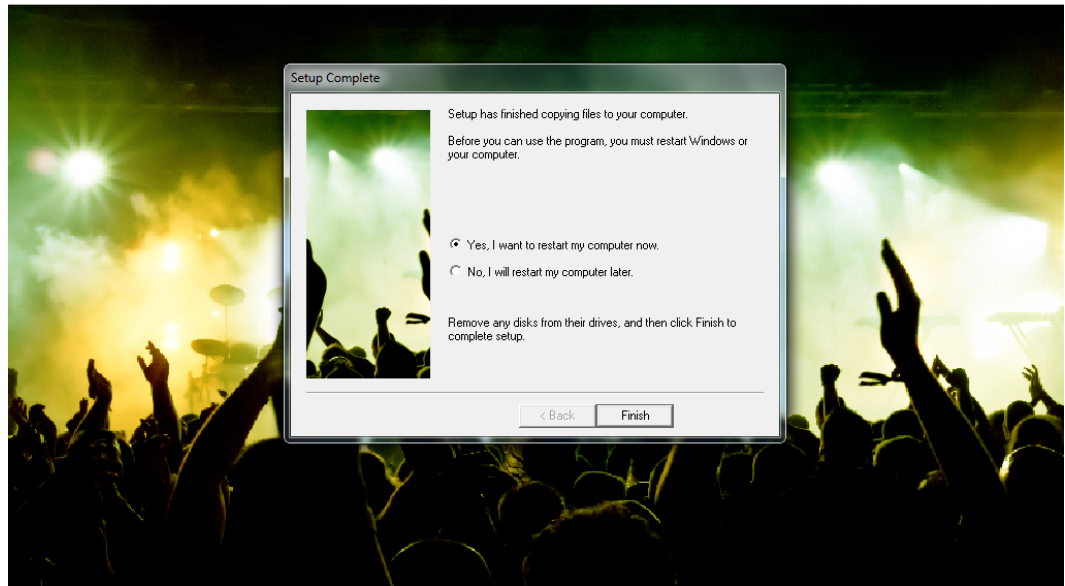


Figure 2-30. ENCOR Setup - Install ShieldWizard Completed

30. Click **Finish** to reboot the computer immediately or select **No** and click **Finish** to reboot manually at a later time. The HASP Plug may now be installed.
32. Installation complete. Re-boot.

ENCOR Office Installation



© 2017 NCR
All Rights Reserved
ENCOR is a trademark of NCR

commerce made complete

Figure 2-31. ENCOR Setup - Setup Complete

Note:

Select **ENCOR** on the desktop after re-boot and enter credentials as on the MFS1.

Chapter 3: Post Installation

Adding Users to proper Windows Groups

- Using an Administrator user of Windows.
- Navigate to Computer Management (Control Panel > Administrative Tools).
- Under Local Users and Groups, Select Users.
- Double click a user to display the User's Properties.
- In the Member Of tab, please make sure all users that are not assigned to the Administrators group are added to the ENCORUSERS group.
- Click Ok.

Note:

All Windows Users running ENCOR need to be created with the same user name and password on all MFS and LFS machines. These users also need to belong to the same groups (Administrators or ENCORUSERS).

Adding Inbound Firewall Rules

- TCP and UDP Port 345 (RSM)



© NCR Corporation, 2019

NCR endeavors to ensure that the information in this document is correct and fairly stated but does not accept liability for any error or omission.

The development of NCR products and services is continuous and published information may not be up to date. It is important to check the current position with NCR. This document is not part of a contract or license, save insofar as may be expressly agreed.

NCR Corporation
864 Spring Street
Atlanta, GA 30308

P/N 89000939
PIN 45002/032