

ENCOR

■ Installation Guide — MFS

■ Version 1.0.0.0



ENCOR MFS Installation Guide

Date of Issue	Product ID Num.	Part Number	Brief Description
December 2017	45002/032	89000907	1.0.0.0 Release

©Copyright NCR Corporation 1995-2017
All rights reserved

This publication is protected by federal copyright law. This document and its contents are the proprietary, confidential information and property of NCR Corporation ("NCR"). Unauthorized disclosure, reproduction, distribution or use of this document and/or its contents in any form is strictly prohibited. No part of this publication may be reproduced or transmitted into any human or computer language in any form or by any means, stored in a retrieval system, transmitted, redistributed, translated or disclosed to third parties, or de-compiled in any way including, but not limited to, photocopy, photograph, electronic, mechanical, magnetic or manual without the express written permission of NCR or its licensors, if any. This document, notwithstanding the above, may be distributed in electronic or printed form by NCR to personnel who are employed by either (a) a licensee and end user of the subject system of this document or (b) personnel from an authorized NCR Channel Partner or Solution Provider of the subject system of this document. All copies of this document so distributed and/or so authorized, shall contain a full copy of this copyright notice.

NCR has prepared this document as a guide to the proper installation, operation, customization and/or maintenance of NCR products. The drawings and specifications contained herein are the property of NCR and/or its licensors.

NCR endeavors to ensure that the information in this document is correct and fairly stated but does not accept liability for any error or omission. NCR makes no representation or warranties with respect to the contents hereof, and specifically disclaims any implied warranties of merchantability or fitness for a particular purpose or non-infringement. No commitments by NCR or its suppliers are made by or from this documentation which is provided for information only.

Development of NCR products and documentation is continuous: NCR reserves the right to revise this publication and to make changes at any time to the contents hereof or to the products herein described or discussed without notice and without any obligation for NCR to notify any person or organization of such revision or changes. Information published in this document will likely be superseded, and it is recommended that users regularly check for updates and newer versions.

The trademarks NCR, Retalix, StoreNext, ISS45, ScanMaster, R10, ACS, PocketOffice, RPO, RBO, ABO, Connected Payments, ServerEPS, Connected Services, Connected Loyalty, WinEPS and all other NCR product names are registered trademarks or trademarks of NCR; all other trademarks or registered trademarks are the property of their respective owners. Third-party products, services, or company names referenced in this document may be trademarked or copyrighted by their respective owners, and are for identification purposes only. Copyrights, trademarks and license agreements shall be governed and construed in accordance with the laws of the State of New York and the Federal Arbitration Act, and shall benefit NCR, its successors, and assigns.

Address comments and corrections regarding this document to:

Attn: Software Program Director
NCR
797 Commonwealth Drive
Warrendale, PA 15086

Table of Contents

<i>Chapter 1:</i> ENCOR MFS Installation	1-1
<i>Chapter 2:</i> Verify IIS Connection	2-1

Revision Record

Issue	Date	Remarks
A	Dec 2017	First issue

Chapter 1: ENCOR MFS Installation

1. Go to the installation source and open the FrontOffice folder.

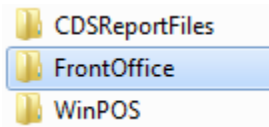


Figure 1-1. FrontOffice Folder

2. Open the Disk1 folder.

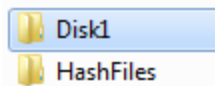


Figure 1-2. FrontOffice > Disk1 Folder

3. Double-click `Setup.exe`.

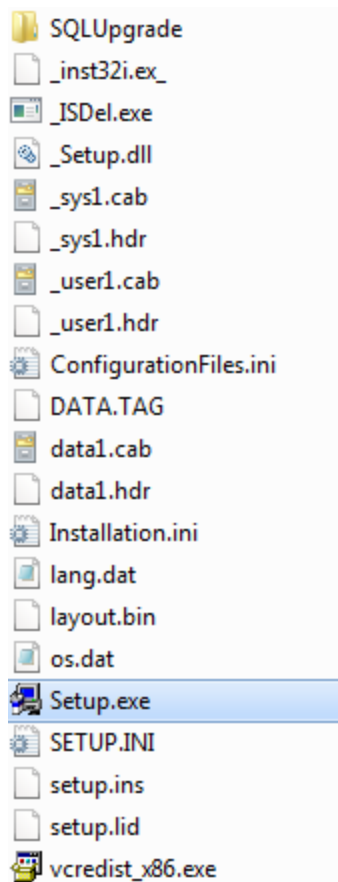


Figure 1-3. FrontOffice > Disk1 > Setup.exe

4. The installation begins preparations. No action is necessary at this time.

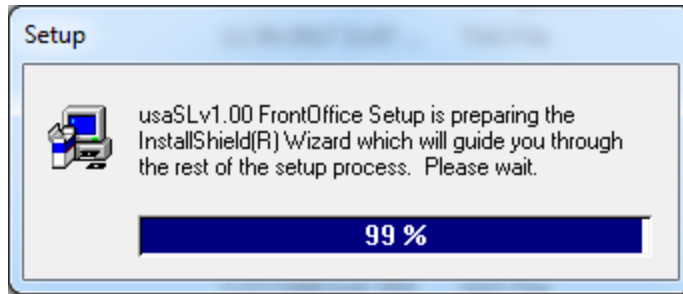
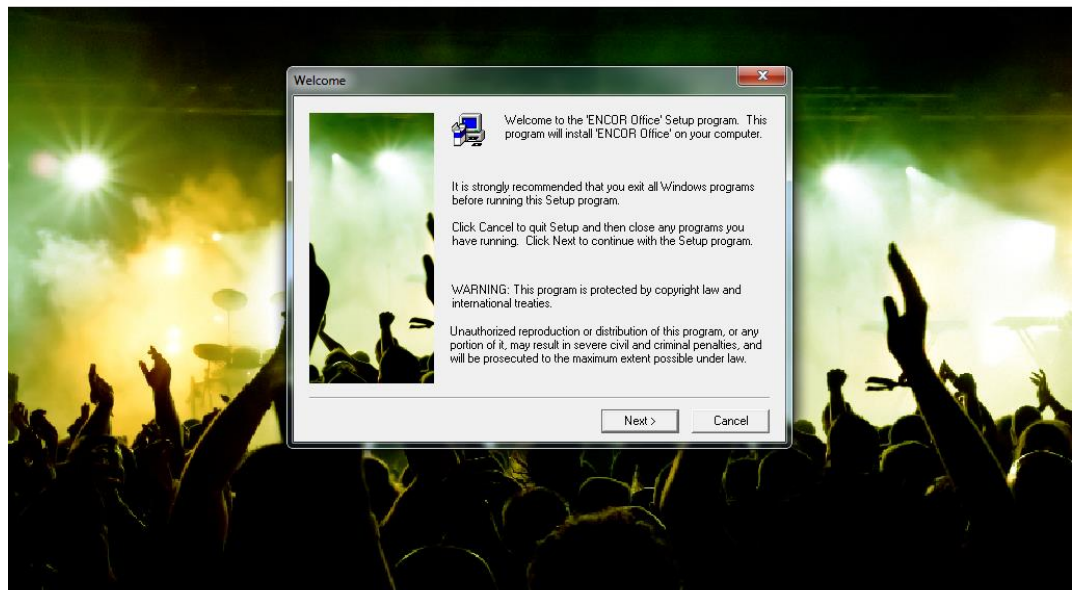


Figure 1-4. Installation Begins

5. The welcome screen appears. Click **Next**.

ENCOR Office Installation

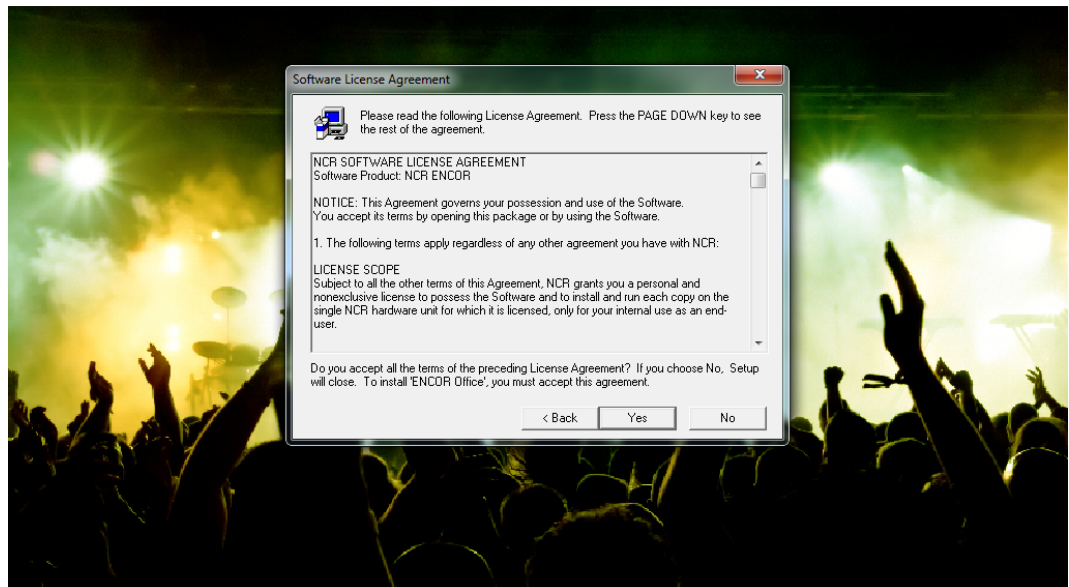


© 2017 NCR
All Rights Reserved
ENCOR is a trademark of NCR

commerce made complete

Figure 1-5. ENCOR Setup - Welcome

6. Click **Yes** to accept the License Agreement.

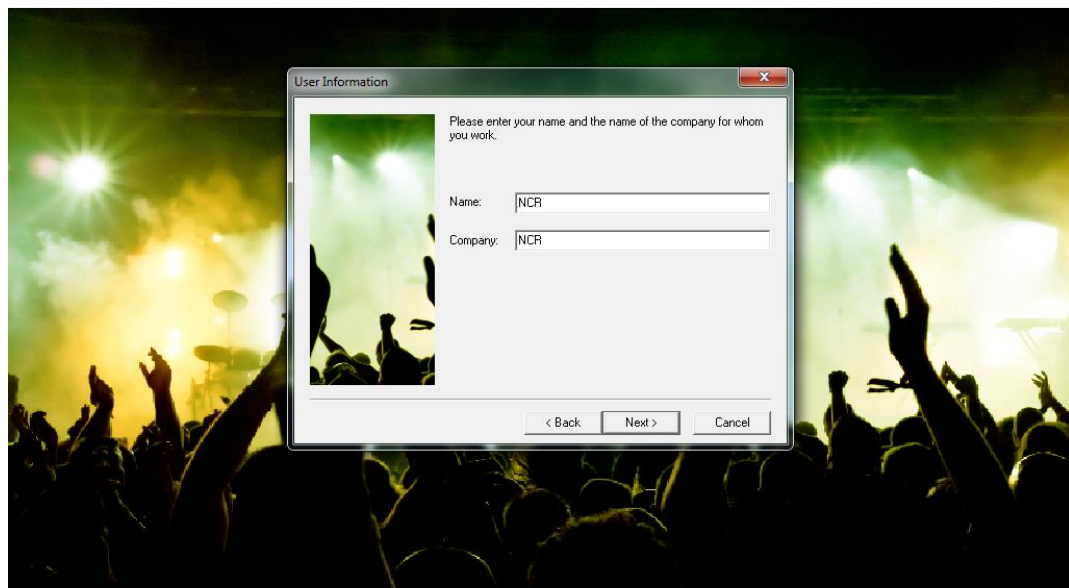
ENCOR Office Installation

© 2017 NCR
All Rights Reserved
ENCOR is a trademark of NCR

commerce made complete

Figure 1-6. ENCOR Setup - License Agreement

7. Enter your name and the name of the company then click Next.

ENCOR Office Installation

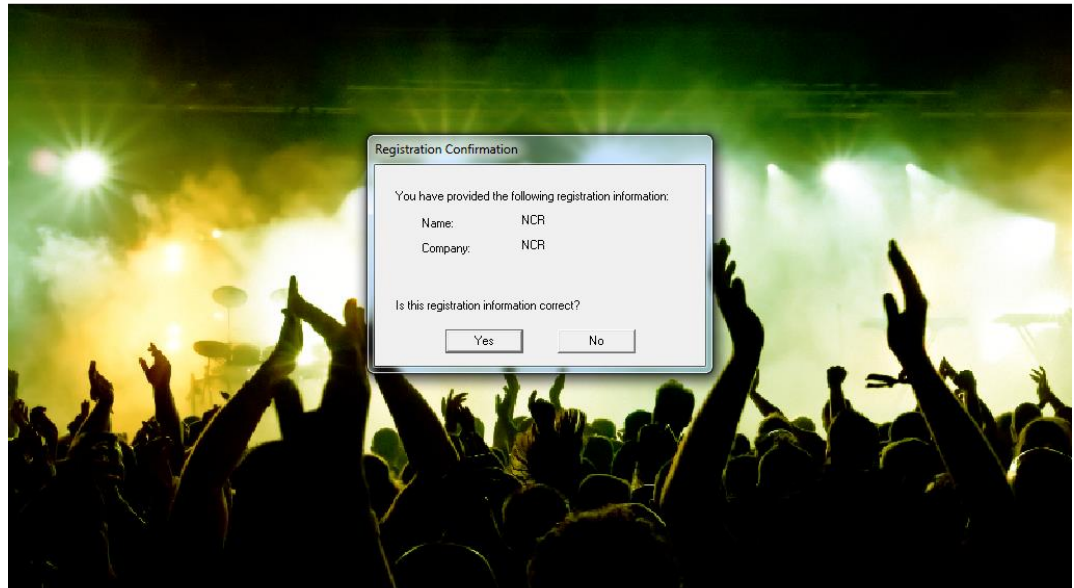
© 2017 NCR
All Rights Reserved
ENCOR is a trademark of NCR

commerce made complete

Figure 1-7. ENCOR Setup - User Information

8. Click **Yes** to confirm the registration information.

ENCOR Office Installation



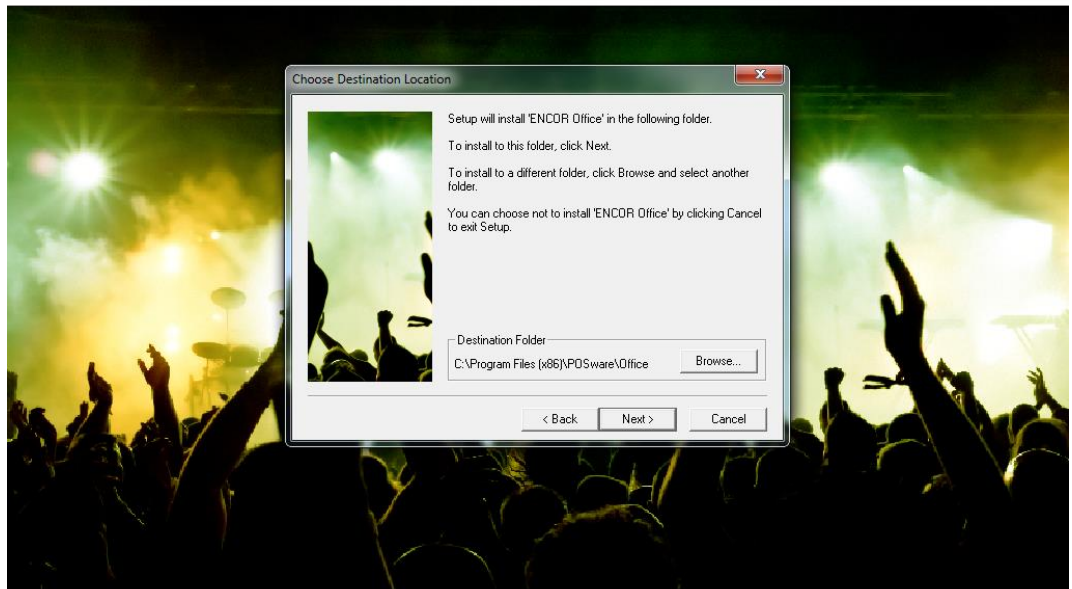
© 2017 NCR
All Rights Reserved
ENCOR is a trademark of NCR

commerce made complete

Figure 1-8.ENCOR Setup - Registration Confirmation

9. Verify the default installation destination folder or click **Browse** to change the installation location then click **Next**.

ENCOR Office Installation



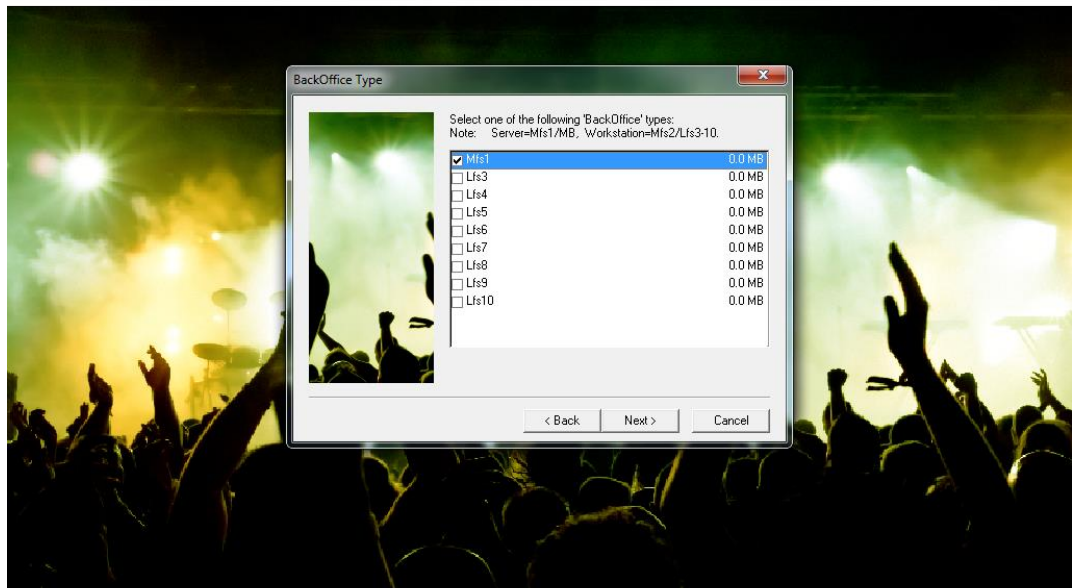
© 2017 NCR
All Rights Reserved
ENCOR is a trademark of NCR

commerce made complete

Figure 1-9. ENCOR Setup - Destination Location

10. Click **Next** to accept Mfs1 as the back office type.

ENCOR Office Installation



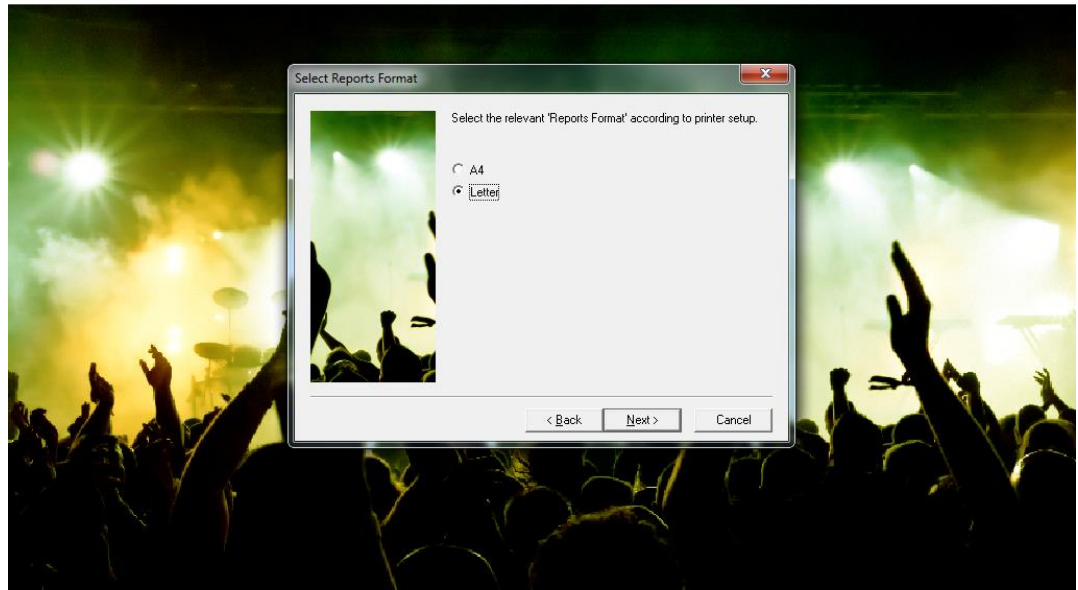
© 2017 NCR
All Rights Reserved
ENCOR is a trademark of NCR

commerce made complete

Figure 1-10. ENCOR Setup - BackOffice Type

11. Verify the default report format of Letter or select the appropriate report format then click **Next**.

ENCOR Office Installation

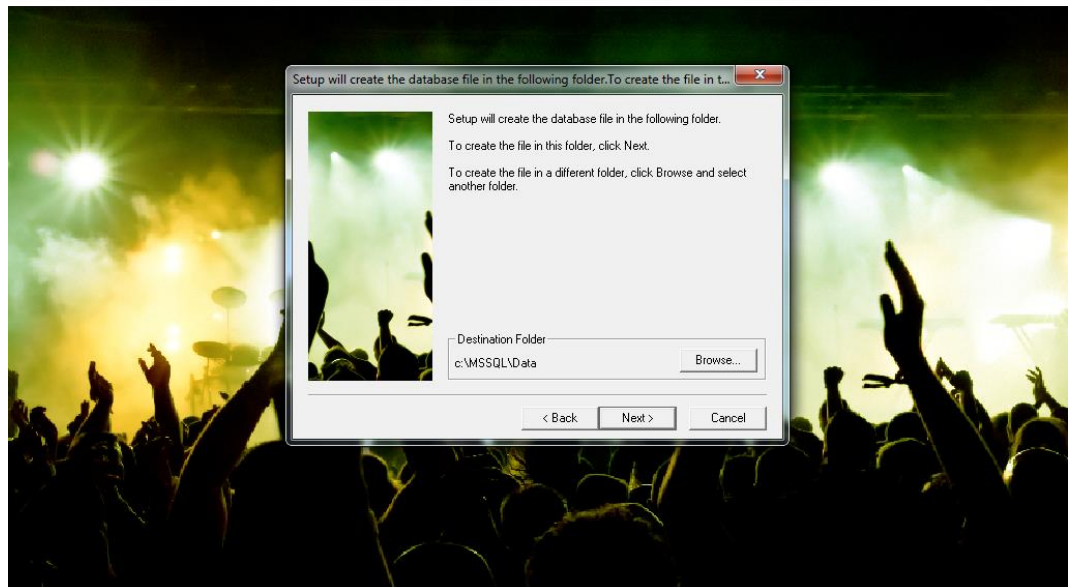


© 2017 NCR
All Rights Reserved
ENCOR is a trademark of NCR

commerce made complete

Figure 1-11. ENCOR Setup - Select Report Format

12. Confirm the location of the database or change the location if desired then click **Next**.

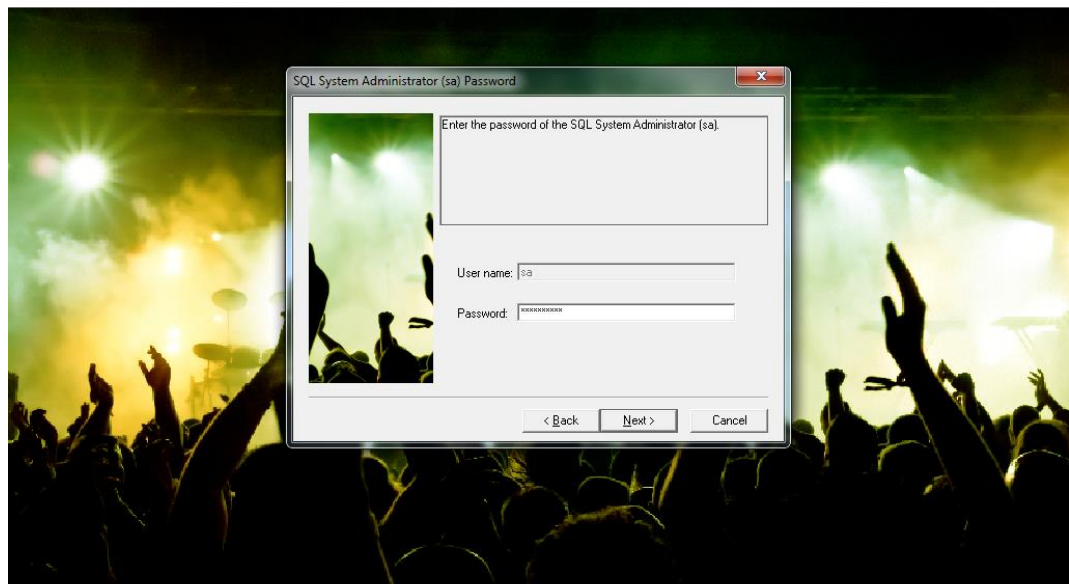
ENCOR Office Installation

© 2017 NCR
All Rights Reserved
ENCOR is a trademark of NCR

commerce made complete

Figure 1-12. ENCOR Setup - Database Location

13. Enter the SQL Server System Administrator (sa) password then click **Next**.

ENCOR Office Installation

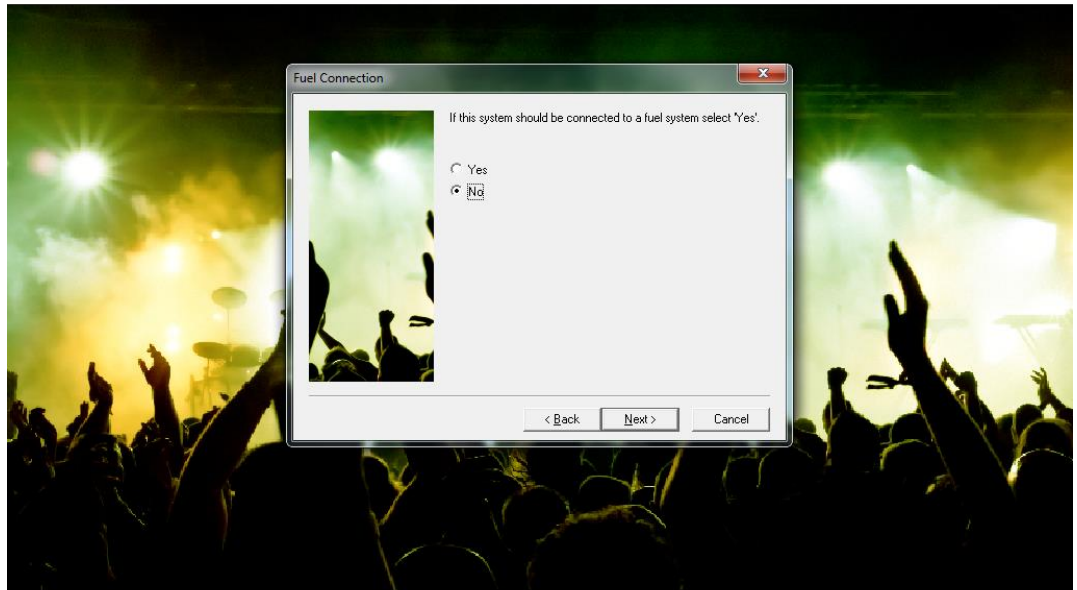
© 2017 NCR
All Rights Reserved
ENCOR is a trademark of NCR

commerce made complete

Figure 1-13. ENCOR Setup - SQL sa Password

14. If this system should be connected to a fuel system, select **Yes**; otherwise, select **No**. Click **Next**.

ENCOR Office Installation

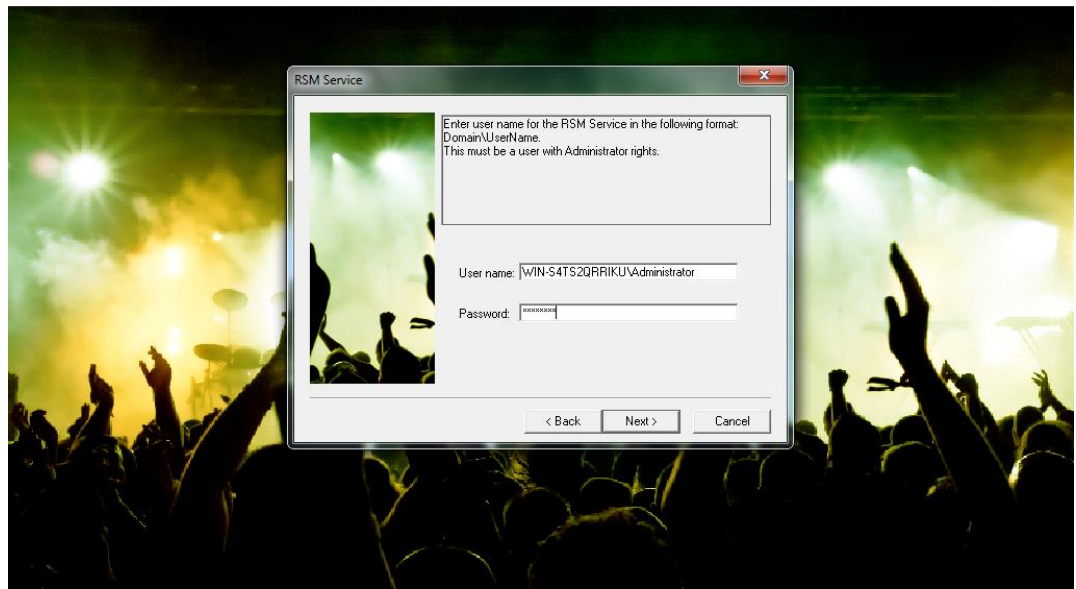


© 2017 NCR
All Rights Reserved
ENCOR is a trademark of NCR

commerce made complete

Figure 1-14. ENCOR Setup - Fuel System

15. Enter the User name and Password for the RSM Service then click **Next**.

ENCOR Office Installation

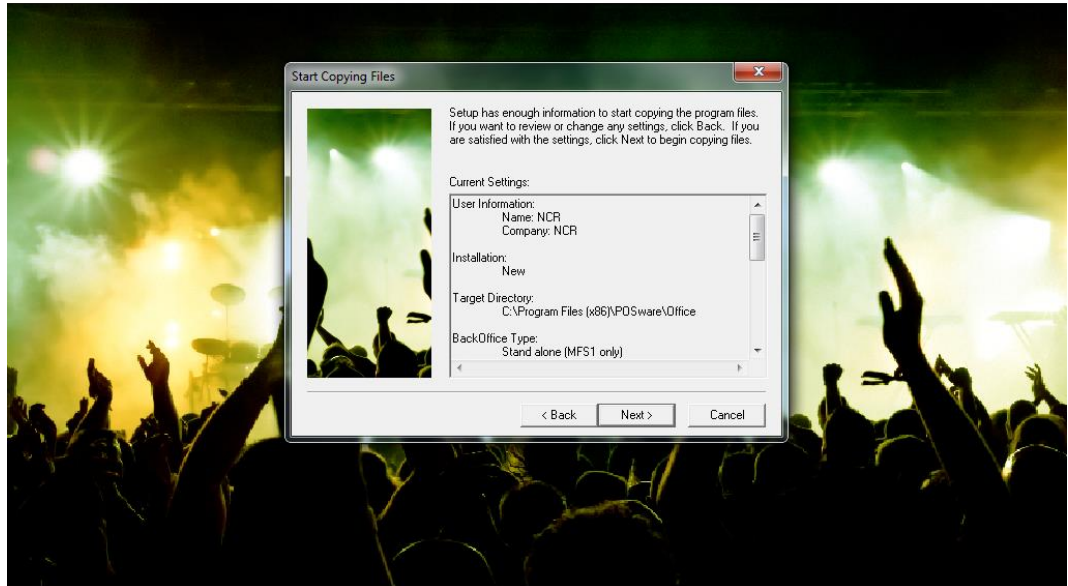
© 2017 NCR
All Rights Reserved
ENCOR is a trademark of NCR

commerce made complete

Figure 1-15. ENCOR Setup - RSM Service

16. Verify the settings. If changes need to be made, click **Back**. If no changes are necessary, then click **Next** to start copying files.

ENCORA Office Installation



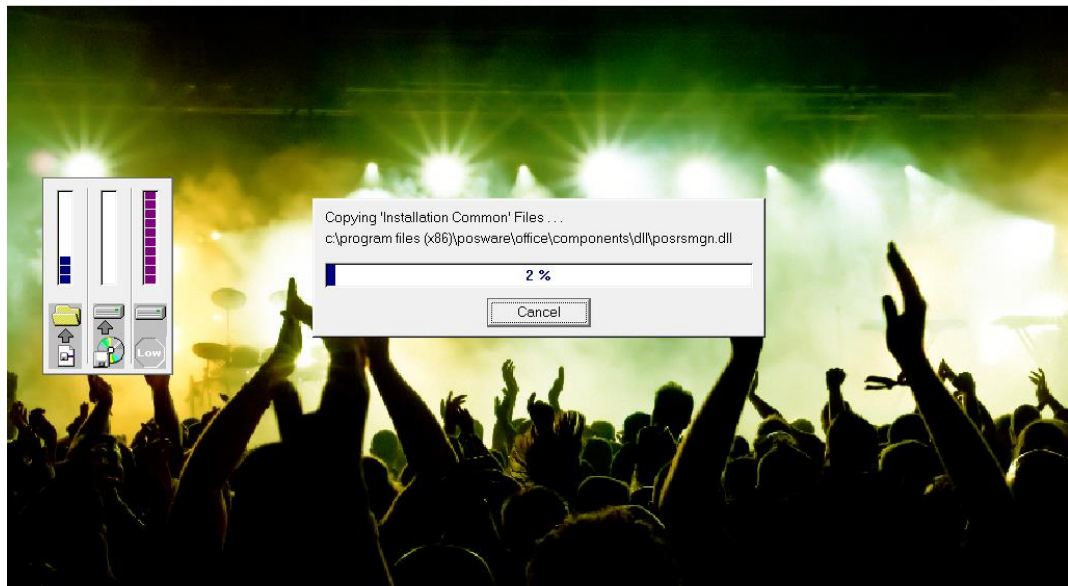
© 2017 NCR
All Rights Reserved
ENCORA is a trademark of NCR

commerce made complete

Figure 1-16. ENCORA Setup - Start Copying Files

17. The software is installed on the system. No action is necessary at this time.

ENCORA Office Installation



© 2017 NCR
All Rights Reserved
ENCORA is a trademark of NCR

commerce made complete

Figure 1-17. ENCORA Setup - Copying Files

18. Edit the necessary lines of the HOSTS file, being sure to remove the # sign from the beginning of the SUBNETMASK line or services will not start after a reboot of MFS. Save the changes then close Notepad.

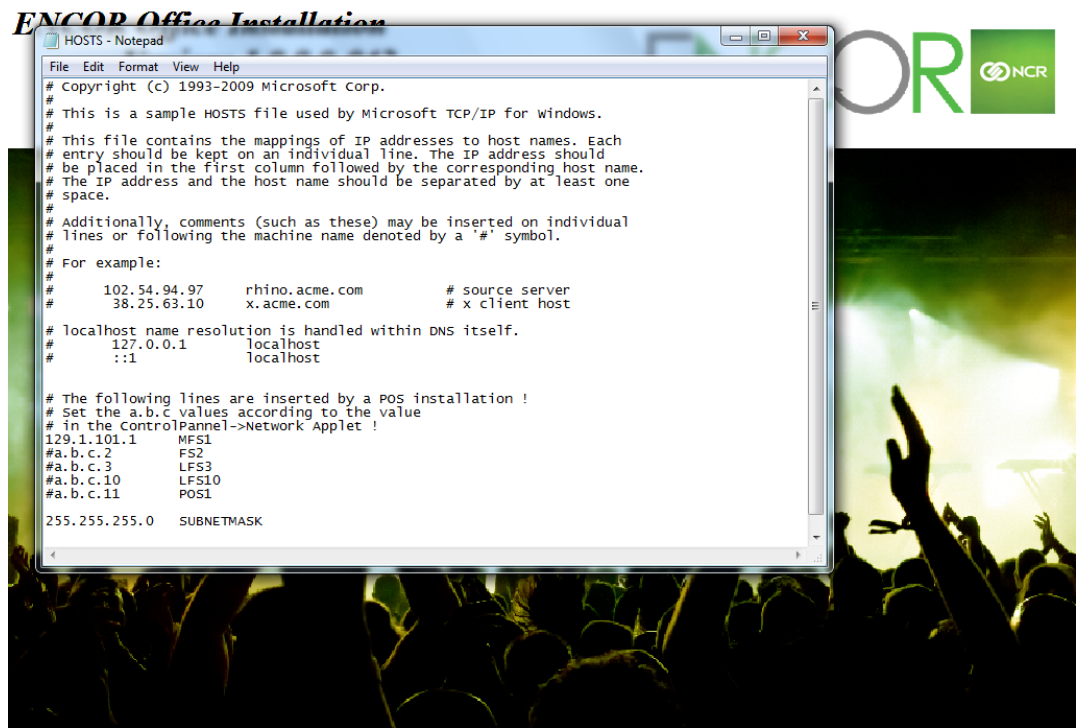
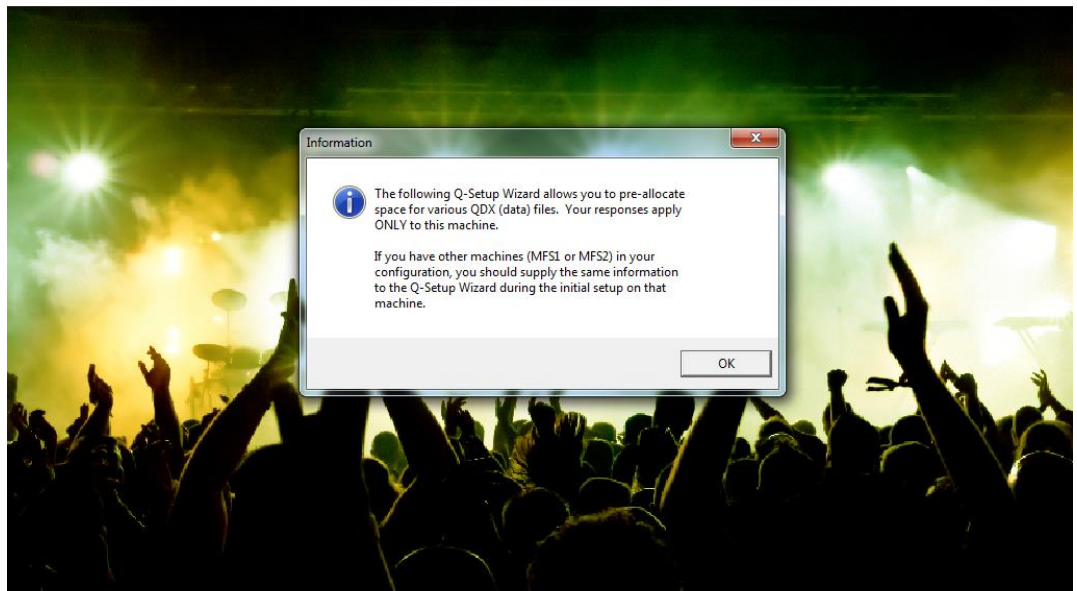


Figure 1-18. ENCOR Setup - Edit HOSTS File

19. Click **OK** to start the Q-Setup Wizard.

ENCOR Office Installation



© 2017 NCR
All Rights Reserved
ENCOR is a trademark of NCR

commerce made complete

Figure 1-19. ENCOR Setup - Q-Setup Wizard

20. Click **Next** to proceed.

ENCOR Office Installation

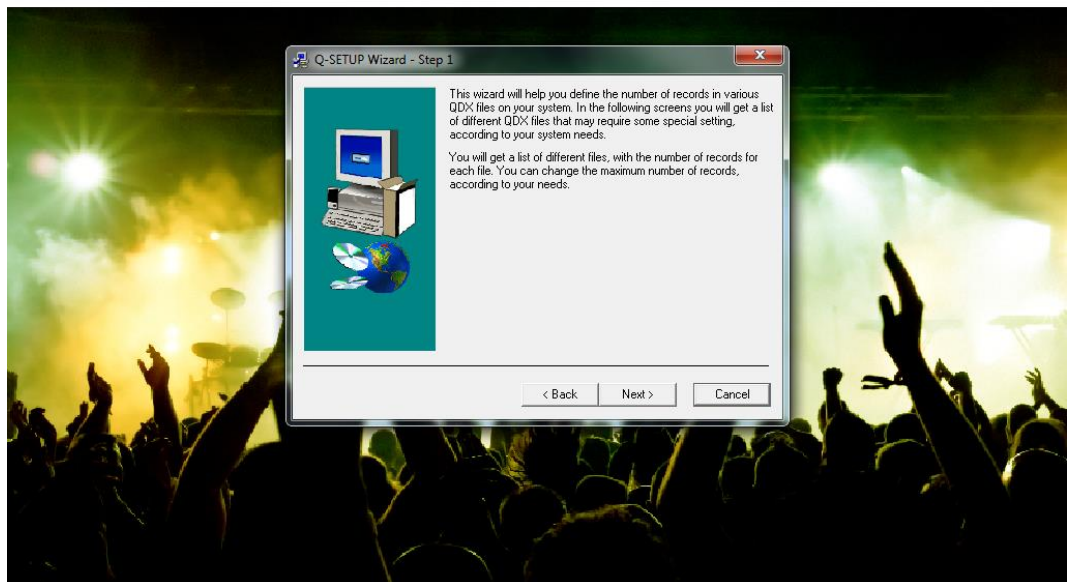


Figure 1-20. ENCOR Setup - Q-Setup Wizard Step 1

21. Click **Next** to proceed.

ENCOR Office Installation

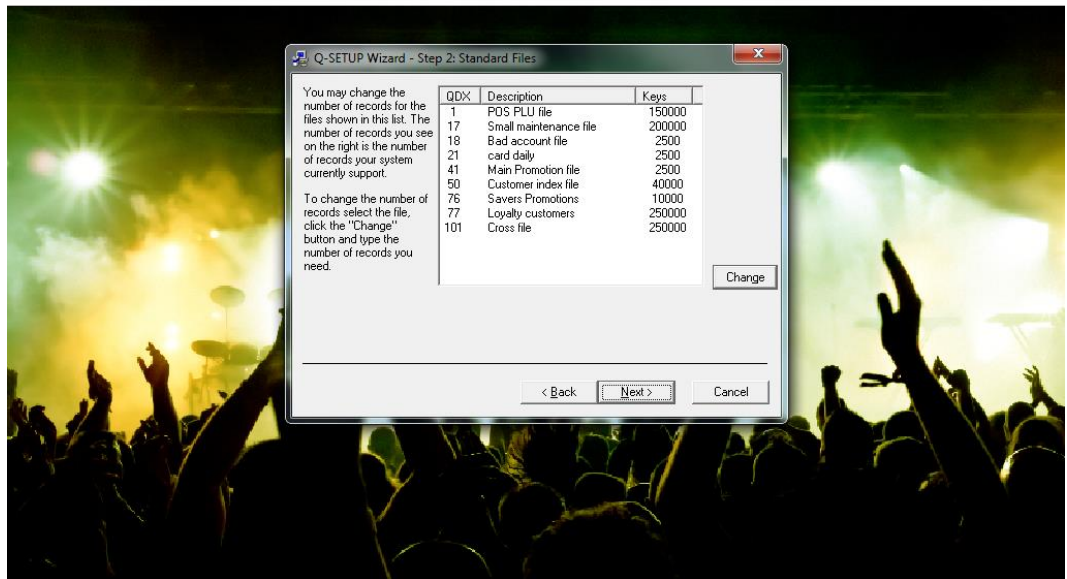


Figure 1-21. ENCOR Setup - Q-Setup Wizard Step 2

22. Click **Next** to proceed.

ENCOR Office Installation

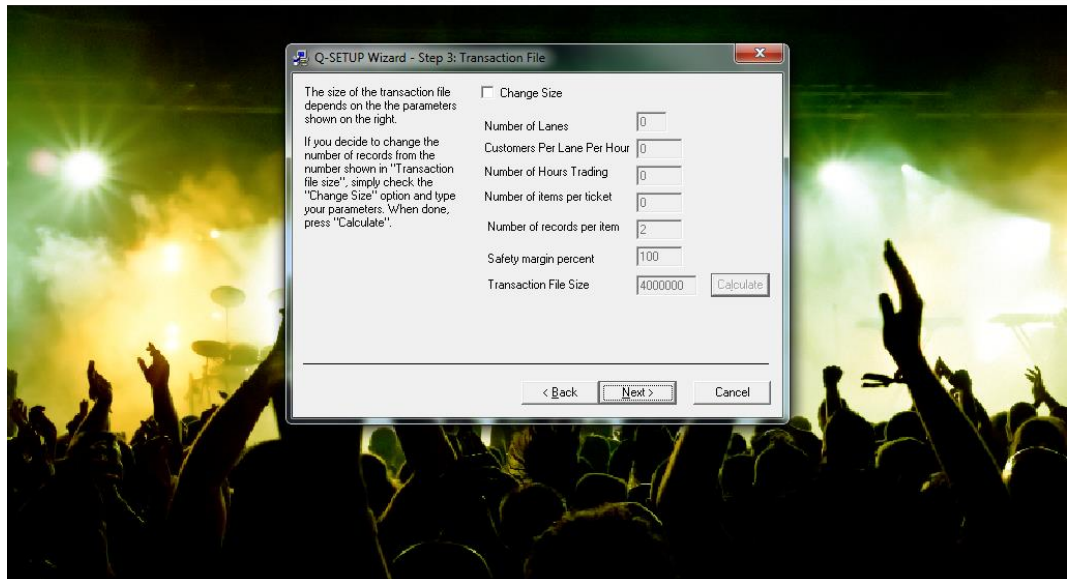


Figure 1-22. ENCOR Setup - Q-Setup Wizard Step 3

23. Click **Next** to proceed.

ENCOR Office Installation

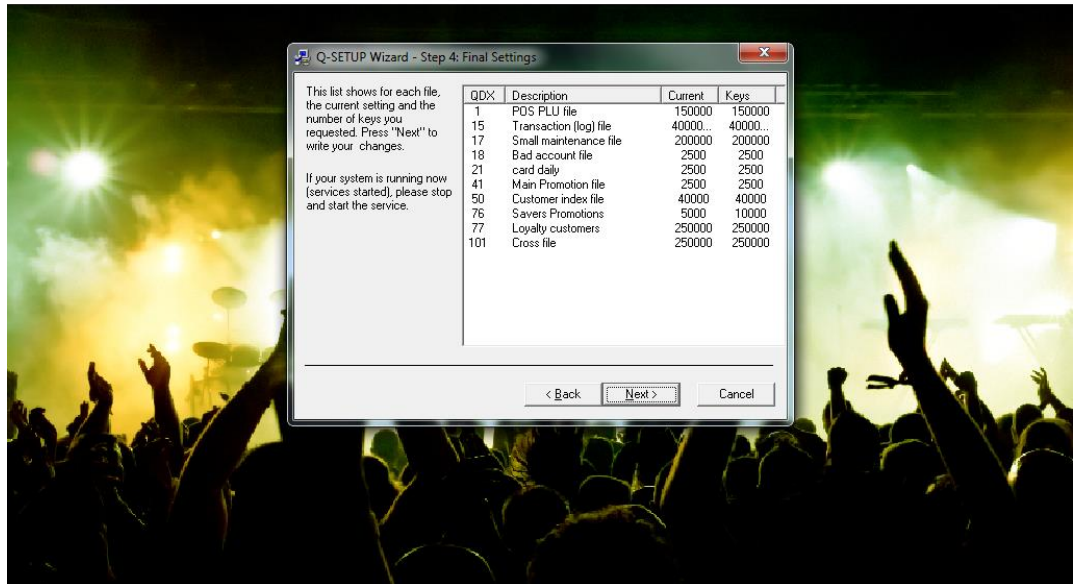


Figure 1-23. ENCOR Setup - Q-Setup Wizard Step 4

24. Click **Yes** to proceed.

ENCOR Office Installation

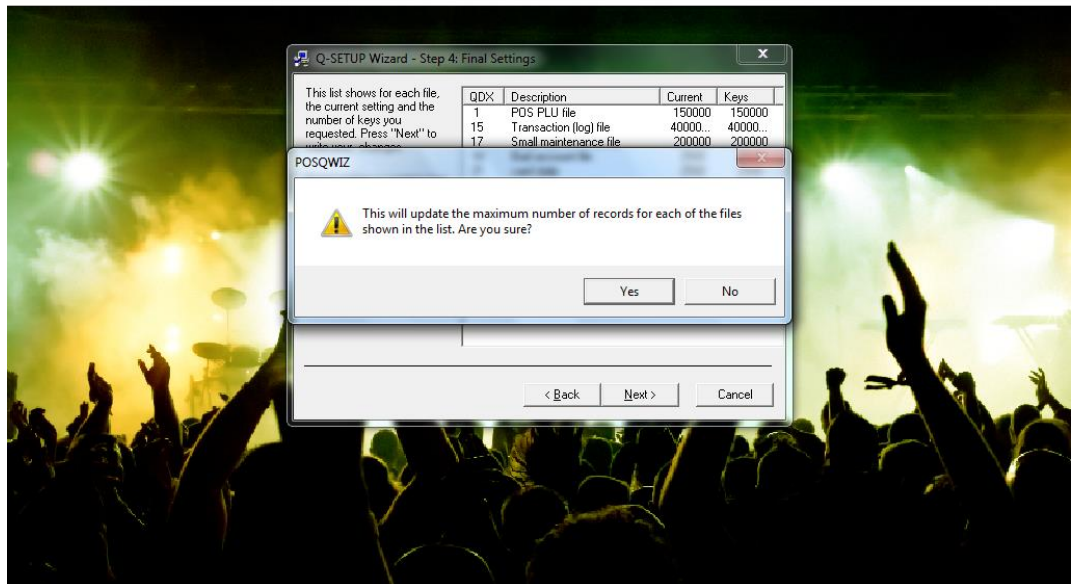


Figure 1-24. ENCOR Setup - POSQWIZ

25. The **ENCOR** database is deployed. No action is necessary at this time.

ENCOR Office Installation

© 2017 NCR
All Rights Reserved
ENCOR is a trademark of NCR

commerce made complete

Figure 1-25. ENCOR Setup - ENCOR Database

26. Click **Next**. Note that beginning with this point, if the installer is canceled, critical **ENCOR** components will not be installed, causing the application to not be able to run correctly.

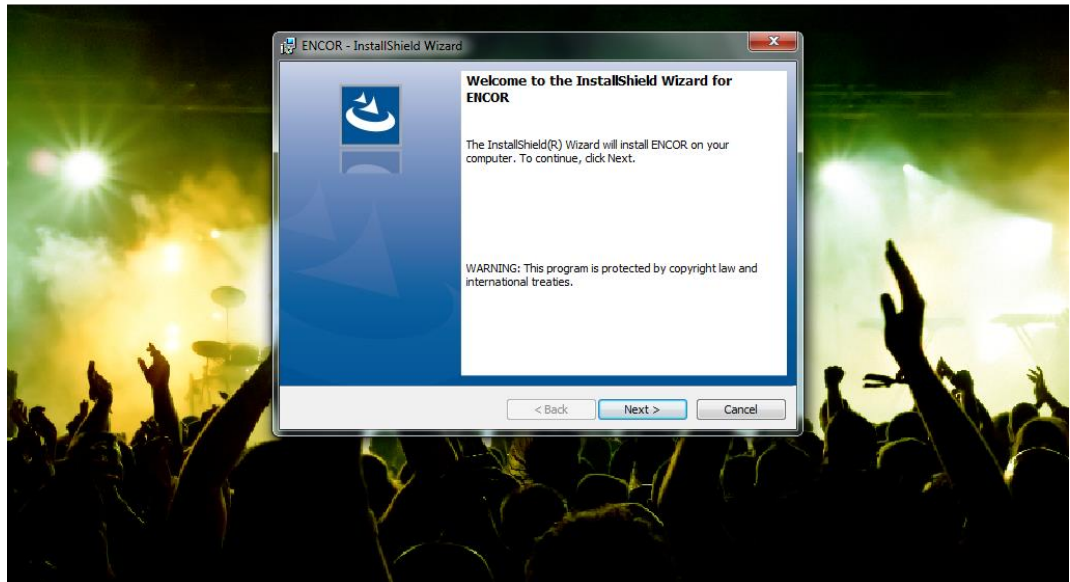
ENCOR Office Installation

Figure 1-26. ENCOR Setup - ENCOR InstallShield Wizard

27. Select the **I accept the terms in the license agreement** radio button then click **Next**.

ENCOR Office Installation

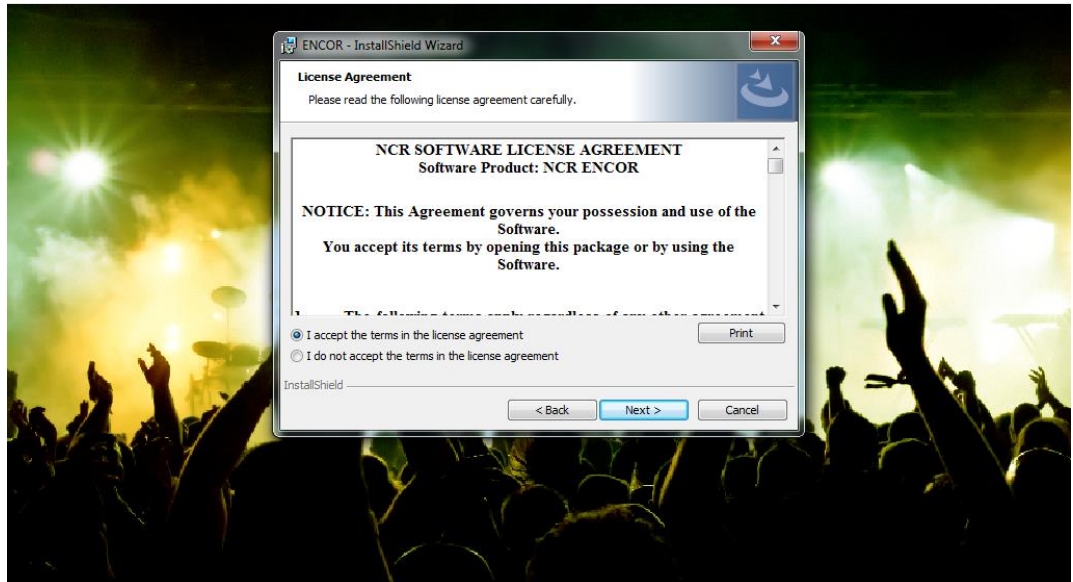


Figure 1-27. ENCOR Setup - License Agreement

28. If this computer is to be the MFS only with the **ENCOR** and Back Office databases deployed elsewhere, select Client. If this computer is to house the **ENCOR** and/or Back Office databases, select Server, select which databases are to be deployed on this system, then click **Next**.

Note:

On the MFS install, the FrontOff database is always deployed to this (the MFS) computer and will not be deployed on any other computer install such as LFS3. The **ENCOR** and Back Office databases need to be deployed only once each at a store. This installer allows the destinations of each to be user selectable. Deploying either the **ENCOR** or Back Office database to multiple computers at a store will cause issues.

Note:

One of or both the **ENCOR** and Back Office Server options must be selected when selecting the Server Installation Type. Should no databases be selected with the Server option, a message will appear stating the following:

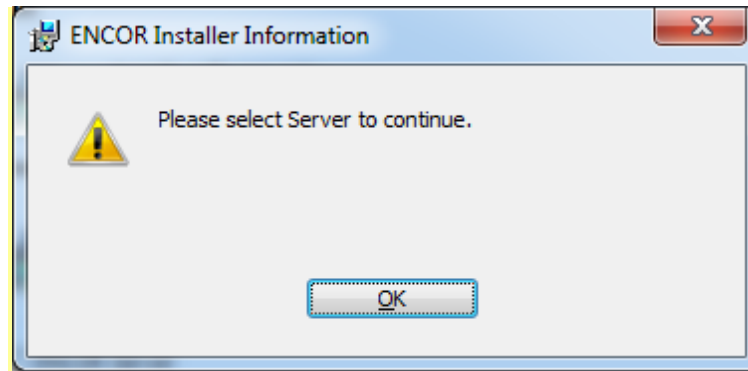


Figure 1-28. ENCOR Setup - ENCOR Installer Information

Should this appear, click **OK** to return to the Installation Type screen and select a database. If the **ENCOR** and/or Back Office databases are on a different computer, select the Client Installation Type.

ENCOR Office Installation

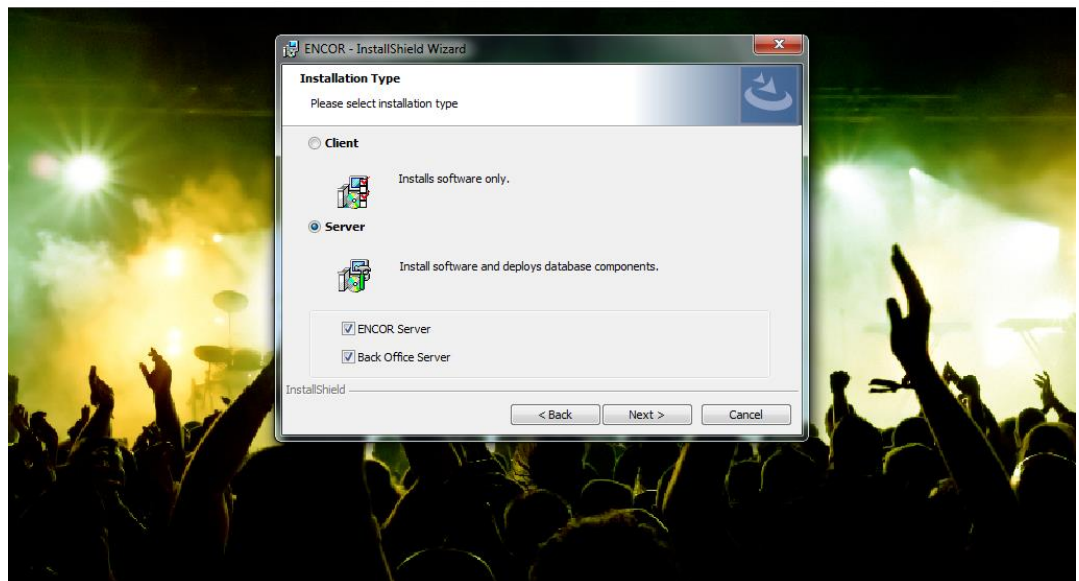


Figure 1-29. ENCOR Setup - Installation Type

29. Click **Install**.

ENCOR Office Installation

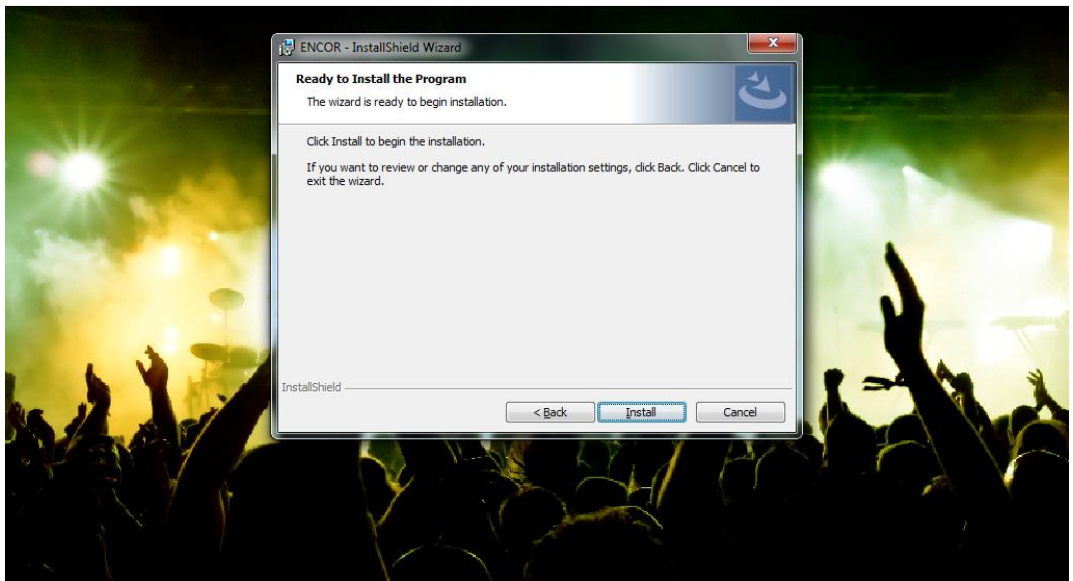


Figure 1-30. ENCOR Setup - Install Program

30. Program features are installed. No action is necessary at this time.

ENCOR Office Installation

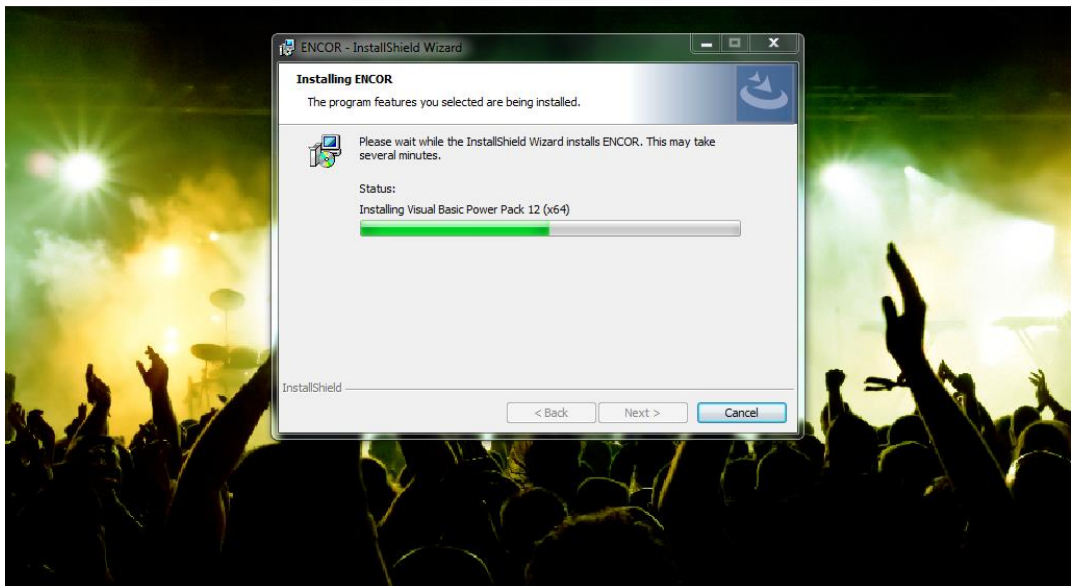


Figure 1-31. ENCOR Setup - Program Features

31. Select or enter the database server that is to have the **ENCOR** database then enter the Login ID and Password to connect to it. Note if the **ENCOR** database is already deployed or will be deployed to a different computer, this

installation routine still requires that computer and login credentials be entered here. Click **Next** to continue.

ENCOR Office Installation

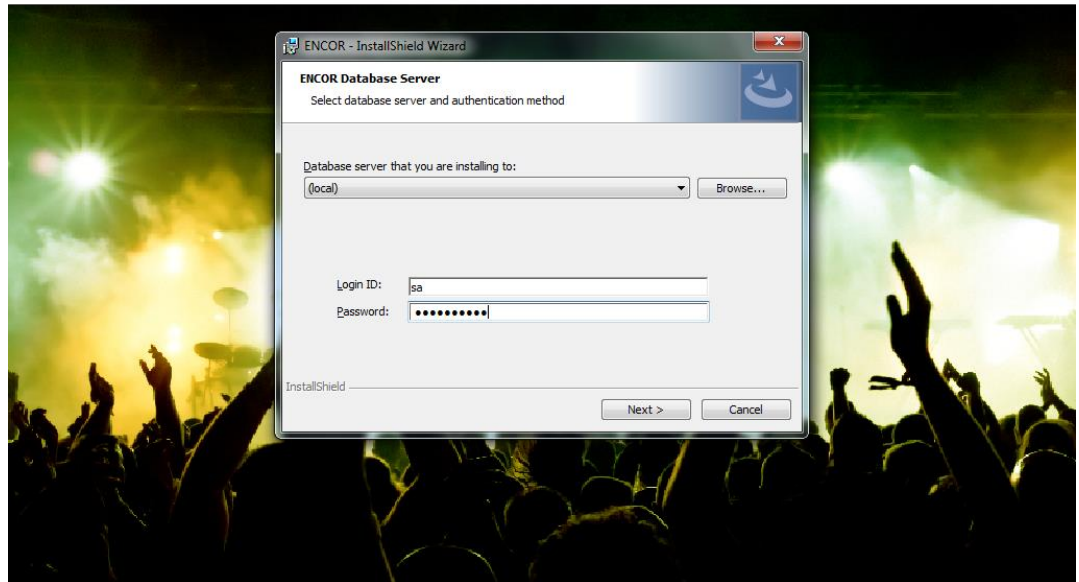


Figure 1-32. ENCOR Setup - ENCOR Database Credentials

32. Connectivity to the **ENCOR** database is verified if it was not selected to be deployed as part of this installation. If the installer cannot connect to the **ENCOR** database, the below error message is displayed. Click **Continue** to go back to the **ENCOR** Database Server screen to click the **Next** button to continue with the installation or click **Cancel** to re-enter the server, Login ID, and Password. If the installer can connect to the **ENCOR** database, this message is not displayed.

ENCOR Office Installation

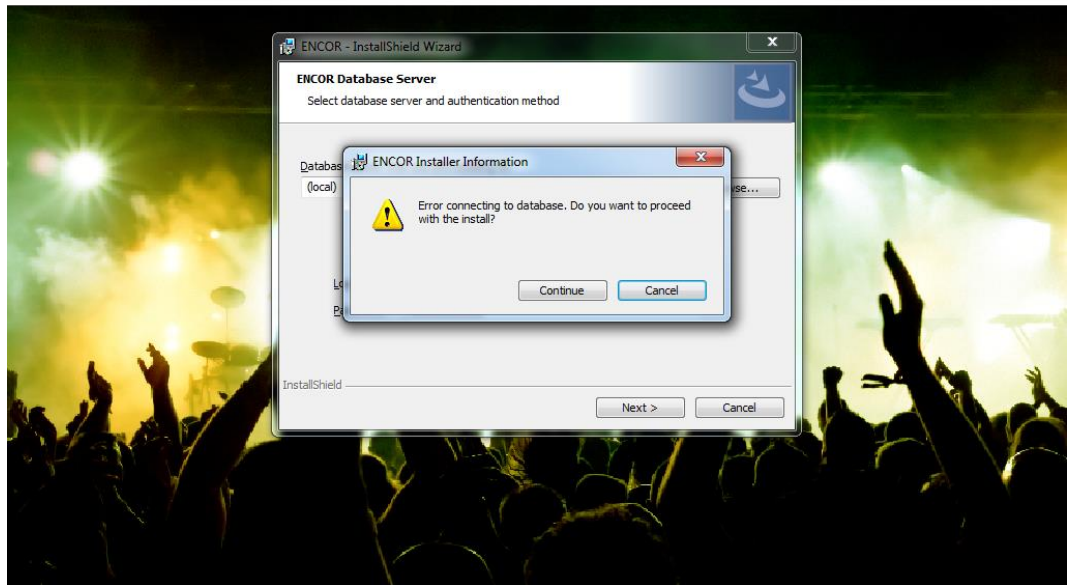


Figure 1-33. ENCOR Setup - ENCOR Database Connection Error

33. Select or enter the database server that is to have the Back Office database then enter the Login ID and Password to connect to it. Note if the Back Office database is deployed to a different computer, this installation routine still requires that computer and login credentials be entered here. Click **Next** to continue.

ENCOR Office Installation

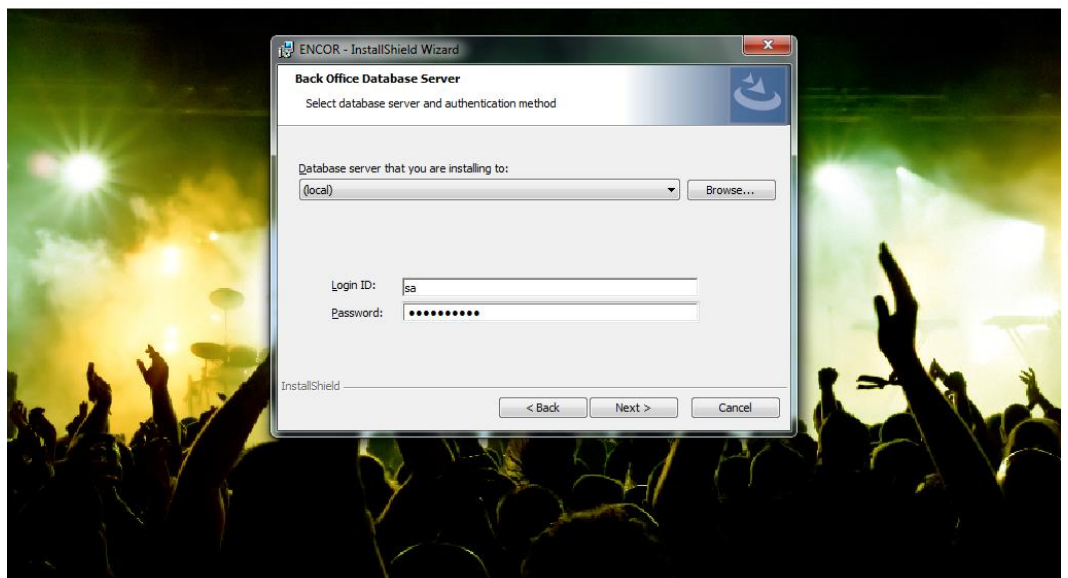


Figure 1-34. ENCOR Setup - BackOffice Database Credentials

34. Connectivity to the Back Office database is verified if it was not selected to be deployed as part of this installation. If the installer cannot connect to the Back Office database, the below error message is displayed. Click **Continue** to go back to the Back Office Database Server screen to click the **Next** button to continue with the installation or click **Cancel** to re-enter the server, Login ID, and Password. If the installer can connect to the Back Office database, this message is not displayed.

ENCOR Office Installation

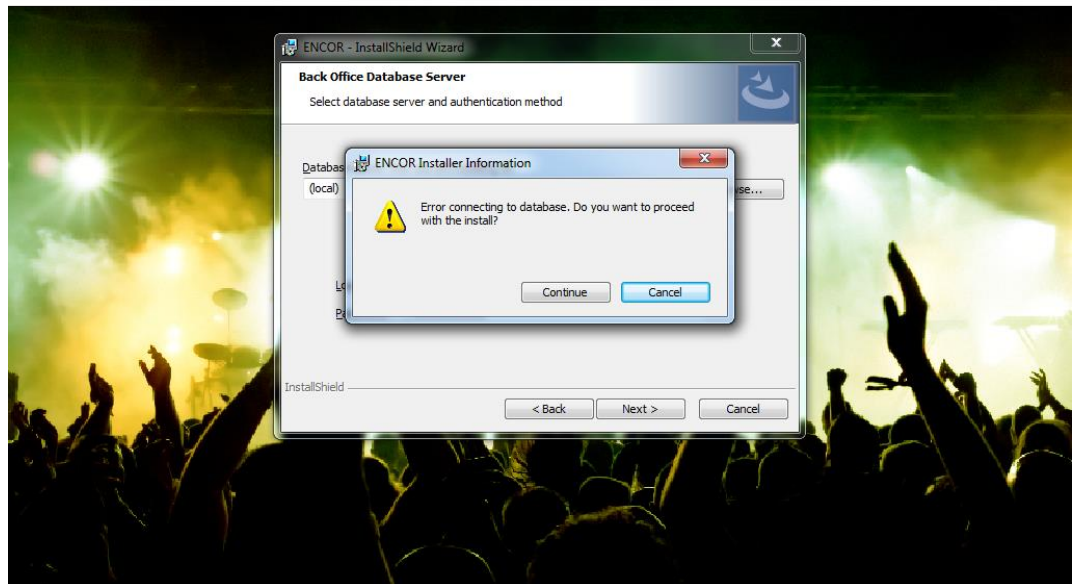


Figure 1-35. ENCOR Setup - BackOffice Database Connection Error

35. Additional components of **ENCOR** are installed. No action is necessary at this time.

ENCOR Office Installation

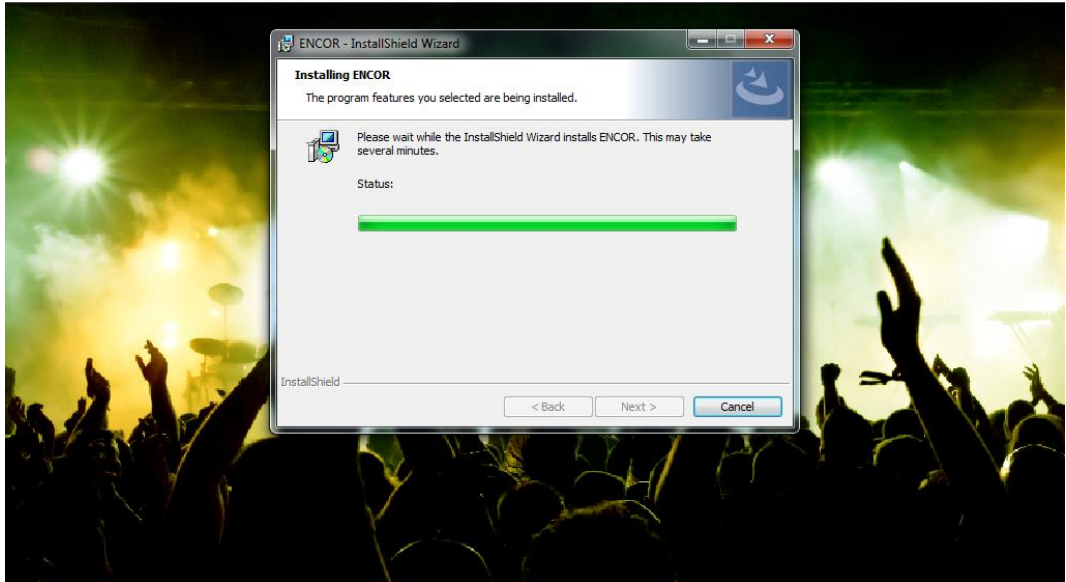


Figure 1-36. ENCOR Setup - ENCOR Installed

36. If Server was selected as the installation type, the selected databases are deployed to this computer. If Client was selected, no databases are deployed and this screen is not displayed. No action is necessary at this time.

ENCOR Office Installation

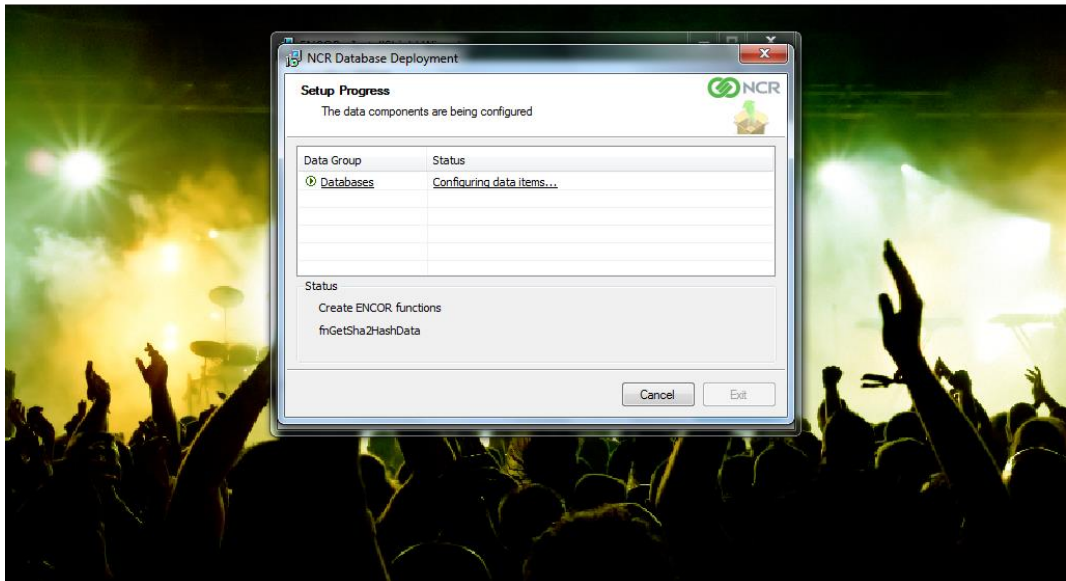


Figure 1-37. ENCOR Setup - ENCOR Database Deployed

37. Click **Finish**.

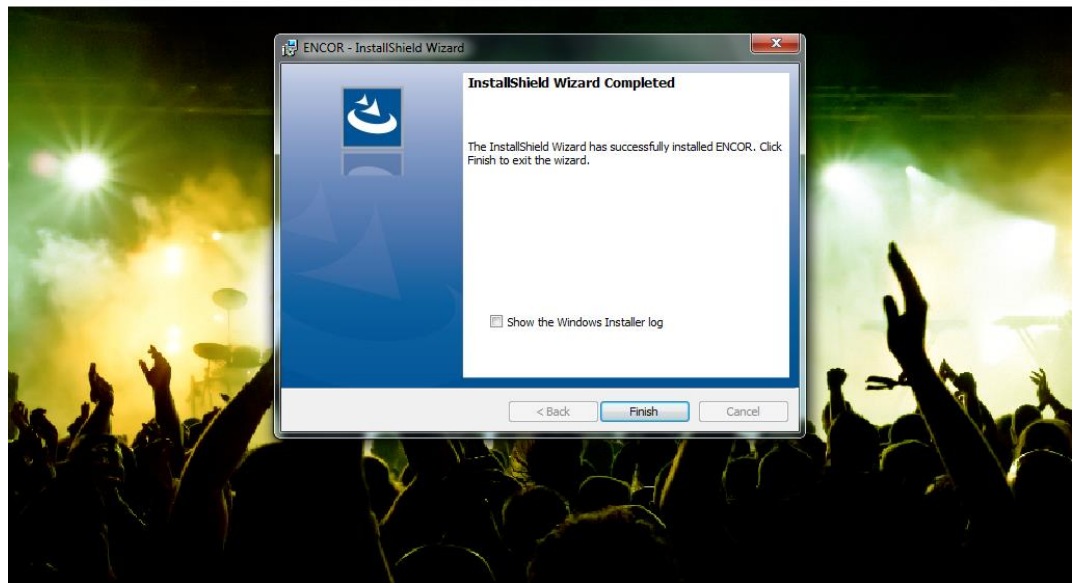
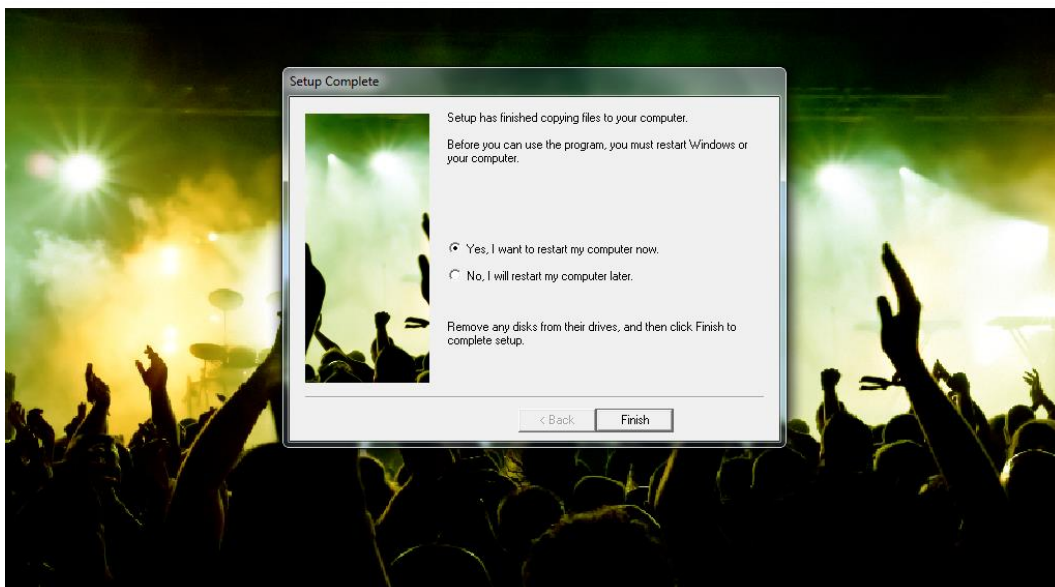
ENCOR Office Installation

Figure 1-38. ENCOR Setup - ENCOR InstallShield Wizard Completed

38. Click **Finish** to reboot the computer immediately or select **No** and click Finish to reboot manually at a later time. The HASP Plug may now be installed.

ENCOR Office Installation



© 2017 NCR
All Rights Reserved
ENCOR is a trademark of NCR

commerce made complete

Figure 1-39. ENCOR Setup - Restart After Finish

39. After reboot check POS Services. Open **ENCOR** and sign in with admin. Default admin password: **Ncr3ncor!**

Chapter 2: Verify IIS Connection

Note:

The steps below can be performed on any **ENCOR** server (machine where the **ENCOR** database resides) to verify the IIS installation, but are only required for **ENCOR** servers running Windows Server 2008 Standard.

1. Open Internet Explorer and paste the following URL into the address textbox and press **Enter**.

<http://localhost/ENCORAPI/api/login?userName=admin&encryptedPwd=8C6976E5B5410415BDE908BD4DEE15DFB167A9C873FC4BB8A81F6F2AB448A918>

Note:

Recommend using Chrome for testing as Microsoft Internet Explorer security setting can prohibit the URL from being resolved correctly.

2. If **ENCOR** returns a message stating that the login was unsuccessful no future action is necessary.

This XML file does not appear to have any style information associated with it. The document tree is shown below.

```
<ArrayOfKeyValueOfstringstring xmlns:i="http://www.w3.org/2001/XMLSchema-instance" xmlns="http://schemas.microsoft.com/2003/10/Serialization/Arrays">
  <KeyValueOfstringstring>
    <Key>IsLocked</Key>
    <Value>False</Value>
  </KeyValueOfstringstring>
  <KeyValueOfstringstring>
    <Key>RequiresPasswordChange</Key>
    <Value>False</Value>
  </KeyValueOfstringstring>
  <KeyValueOfstringstring>
    <Key>IsValid</Key>
    <Value>False</Value>
  </KeyValueOfstringstring>
  <KeyValueOfstringstring>
    <Key>ReturnMessage</Key>
    <Value>Please enter valid credentials. 4 attempts left.</Value>
  </KeyValueOfstringstring>
</ArrayOfKeyValueOfstringstring>
```

Figure 2-1. Login Unsuccessful Message

3. If an error is produced and the URL does not successfully connect to **ENCOR** navigate to the C:\NCR\ENCOR\WebAPI\Web.config and open the configuration file using a ASCII text editor such as Notepad.
4. Find the <modules> element in the XML.

```
</httpModules>
</system.web>
<system.webServer>
  <handlers accessPolicy="Read, Script">
    <remove name="ExtensionlessUrlHandler-Integrated-4.0" />
    <remove name="OPTIONSVerbHandler" />
    <remove name="TRACEVerbHandler" />
    <add name="ExtensionlessUrlHandler-Integrated-4.0" path="*" verb="*" type="System.Web.Handlers.TransferRequestHandler" preCondition="integratedMode,runtimeVersionv4.0" />
  </handlers>
  <validation validateIntegratedModeConfiguration="false" />
  <modules>
    <remove name="ApplicationInsightsWebTracking" />
    <add name="ApplicationInsightsWebTracking" type="Microsoft.ApplicationInsights.Web.ApplicationInsightsHttpModule, Microsoft.AI.Web" preCondition="managedHandler" />
  </modules>
  <directoryBrowse enabled="false" />
</system.webServer>
<runtime>
  <assemblyBinding xmlns="urn:schemas-microsoft-com:asm:v1">
    <dependentAssembly>
      <assemblyIdentity name="Newtonsoft.Json" culture="neutral" publicKeyToken="30ad4fe6b2a6eed" />
      <bindingRedirect oldVersion="0.0.0.0-6.0.0.0" newVersion="6.0.0.0" />
    </dependentAssembly>
    <dependentAssembly>
      <assemblyIdentity name="System.Web.Optimization" publicKeyToken="31bf3856ad364e35" />
      <bindingRedirect oldVersion="1.0.0.0-1.1.0.0" newVersion="1.1.0.0" />
    </dependentAssembly>
  </runtime>
```

Figure 2-2. Web.config XML - <modules>

5. Create a backup of the `web.config` file, then replace the `<modules>` element with the text below.

```
<modules runAllManagedModulesForAllRequests="true">
  <remove name="ApplicationInsightsWebTracking" />
  <add name="ApplicationInsightsWebTracking"
type="Microsoft.ApplicationInsights.Web.ApplicationInsightsHttpModule,
Microsoft.AI.Web" precondition="managedHandler" />
  <remove name="UrlRoutingModule" />
</modules>
```

6. The `<modules>` element should now look like the image below in the `web.config` file.



```
<handlers>
  <remove name="ExtensionlessUrlHandler-Integrated-4.0" />
  <remove name="OPTIONSVerbHandler" />
  <remove name="TRACEVerbHandler" />
  <add name="ExtensionlessUrlHandler-Integrated-4.0" path="*.;" verb="*" type="System.Web.Handlers.TransferRequestHandler" precondition="integratedMode, runtimeVersionv4.0" />
</handlers>
<validation validateIntegratedModeConfiguration="false" />
<modules runAllManagedModulesForAllRequests="true">
  <remove name="ApplicationInsightsWebTracking" />
  <add name="ApplicationInsightsWebTracking" type="Microsoft.ApplicationInsights.Web.ApplicationInsightsHttpModule, Microsoft.AI.Web" precondition="managedHandler" />
  <remove name="UrlRoutingModule" />
</modules>
</system.webServer>
<runtime>
  <assemblyBinding xmlns="urn:schemas-microsoft-com:asm.v1">
    <dependentAssembly>
      <assemblyIdentity name="Newtonsoft.Json" culture="neutral" publicKeyToken="30ad4fe6b2a6aeed" />
      <bindingRedirect oldVersion="0.0.0.0-6.0.0.0" newVersion="6.0.0.0" />
    </dependentAssembly>
    <dependentAssembly>
      <assemblyIdentity name="System.Web.Optimization" publicKeyToken="31bf3856ad364e35" />
      <bindingRedirect oldVersion="1.0.0.0-1.1.0.0" newVersion="1.1.0.0" />
    </dependentAssembly>
  </assemblyBinding>
```

Figure 2-3. Web.config XML - `<modules>` Updated

7. Save the changes to the `web.config` file and restart the **ENCOR** server. Repeat Steps 1 and 2. You should now see a message like the image in Step 2 stating that the login was invalid.



© NCR Corporation, 2017

NCR endeavors to ensure that the information in this document is correct and fairly stated but does not accept liability for any error or omission.

The development of NCR products and services is continuous and published information may not be up to date. It is important to check the current position with NCR. This document is not part of a contract or license, save insofar as may be expressly agreed.

NCR Corporation
2651 Satellite Blvd.
Duluth, GA 30096

P/N 89000907
PIN 45002/032