

# ENCOR

■ Installation Guide — MFS

■ Version 1.0.1.3



## ENCOR MFS Installation Guide

Date of Issue	Product ID Num.	Part Number	Brief Description
December 2017	45002/032	89000907	1.0.0.0 Release
April 2019	45002/032	89000938	1.0.0.3 Release

©Copyright NCR Corporation 1995-2019  
All rights reserved

This publication is protected by federal copyright law. This document and its contents are the proprietary, confidential information and property of NCR Corporation ("NCR"). Unauthorized disclosure, reproduction, distribution or use of this document and/or its contents in any form is strictly prohibited. No part of this publication may be reproduced or transmitted into any human or computer language in any form or by any means, stored in a retrieval system, transmitted, redistributed, translated or disclosed to third parties, or de-compiled in any way including, but not limited to, photocopy, photograph, electronic, mechanical, magnetic or manual without the express written permission of NCR or its licensors, if any. This document, notwithstanding the above, may be distributed in electronic or printed form by NCR to personnel who are employed by either (a) a licensee and end user of the subject system of this document or (b) personnel from an authorized NCR Channel Partner or Solution Provider of the subject system of this document. All copies of this document so distributed and/or so authorized, shall contain a full copy of this copyright notice.

NCR has prepared this document as a guide to the proper installation, operation, customization and/or maintenance of NCR products. The drawings and specifications contained herein are the property of NCR and/or its licensors.

NCR endeavors to ensure that the information in this document is correct and fairly stated but does not accept liability for any error or omission. NCR makes no representation or warranties with respect to the contents hereof, and specifically disclaims any implied warranties of merchantability or fitness for a particular purpose or non-infringement. No commitments by NCR or its suppliers are made by or from this documentation which is provided for information only.

Development of NCR products and documentation is continuous: NCR reserves the right to revise this publication and to make changes at any time to the contents hereof or to the products herein described or discussed without notice and without any obligation for NCR to notify any person or organization of such revision or changes. Information published in this document will likely be superseded, and it is recommended that users regularly check for updates and newer versions.

The trademarks NCR, Retailix, StoreNext, ENCOR, ISS45, ScanMaster, R10, ACS, PocketOffice, RPO, RBO, ABO, Connected Payments, ServerEPS, Connected Services, Connected Loyalty, WinEPS and all other NCR product names are registered trademarks or trademarks of NCR; all other trademarks or registered trademarks are the property of their respective owners. Third-party products, services, or company names referenced in this document may be trademarked or copyrighted by their respective owners, and are for identification purposes only. Copyrights, trademarks and license agreements shall be governed and construed in accordance with the laws of the State of New York and the Federal Arbitration Act, and shall benefit NCR, its successors, and assigns.

Address comments and corrections regarding this document to:

**Attn: Software Program Director**  
NCR  
864 Spring Street  
Atlanta, GA 30308

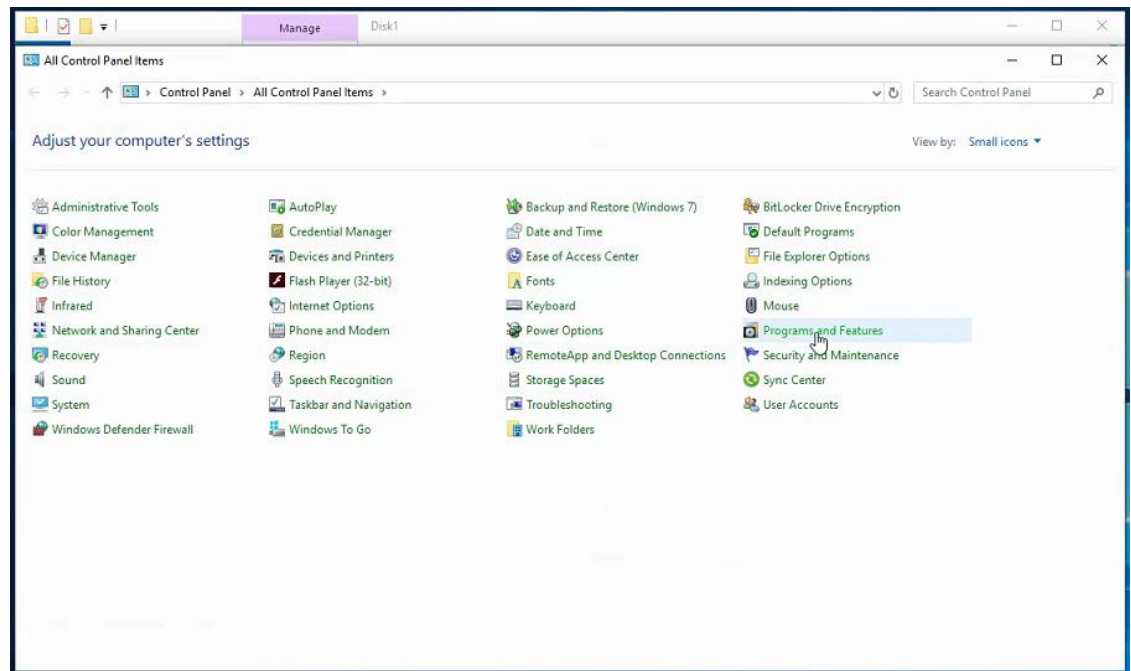
# Table of Contents

---

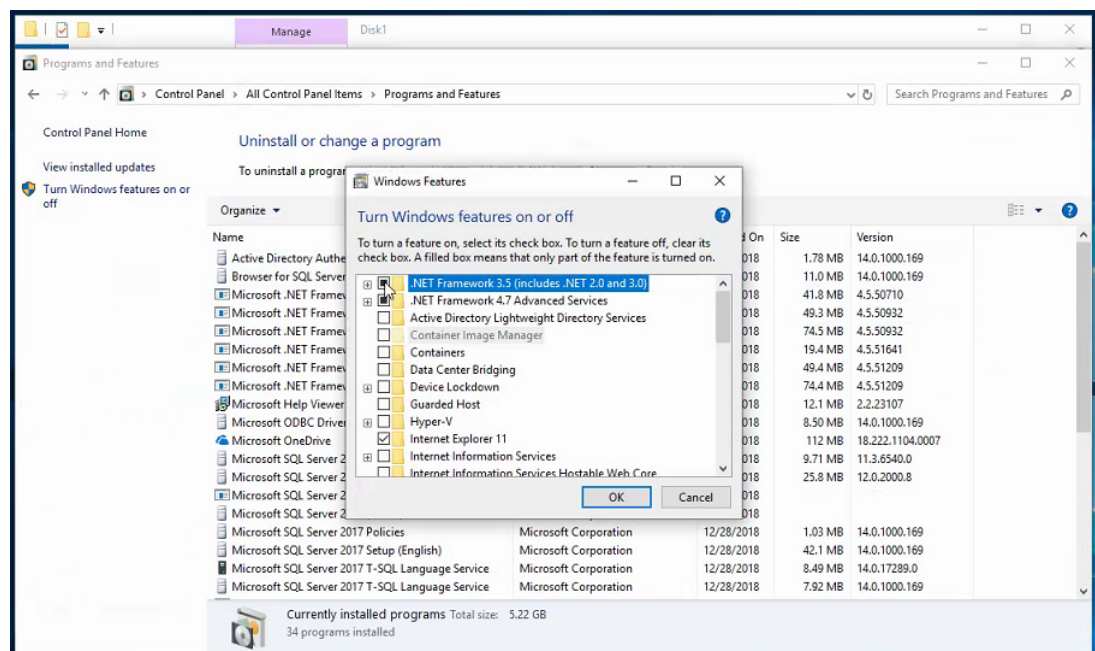
<i>Chapter 1:</i> Preinstallation Setup.....	1-1
<i>Chapter 2:</i> ENCOR MFS Installation .....	1-1
<i>Chapter 3:</i> Post Installation Setup.....	3-1
<i>Chapter 4:</i> Verify IIS Connection .....	4-1

# Chapter 1: Preinstallation Setup

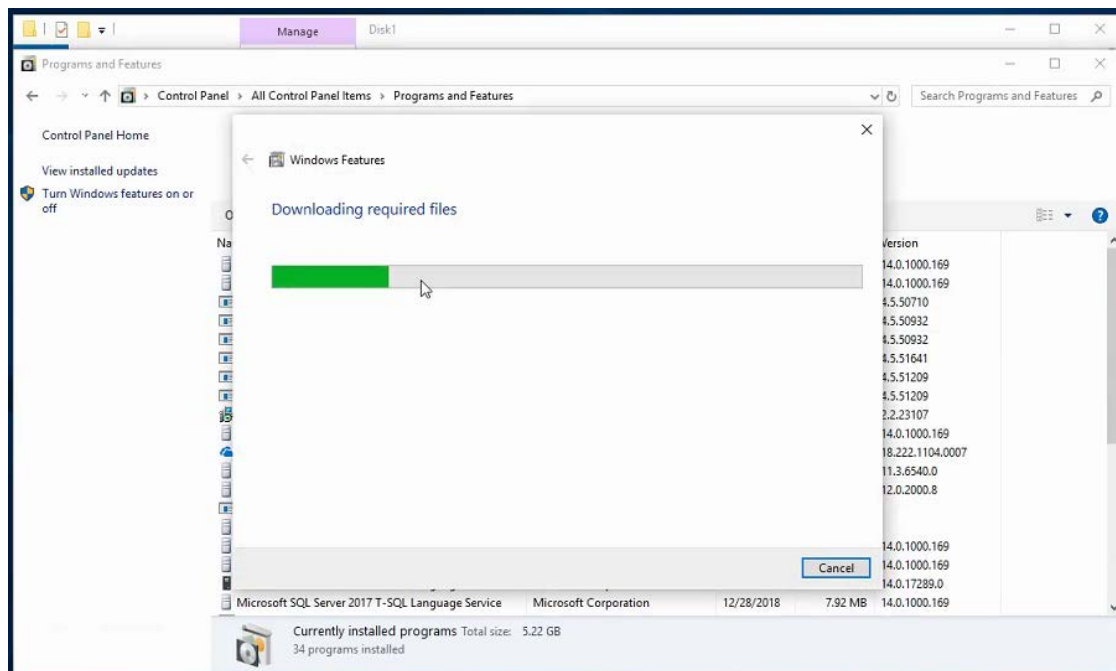
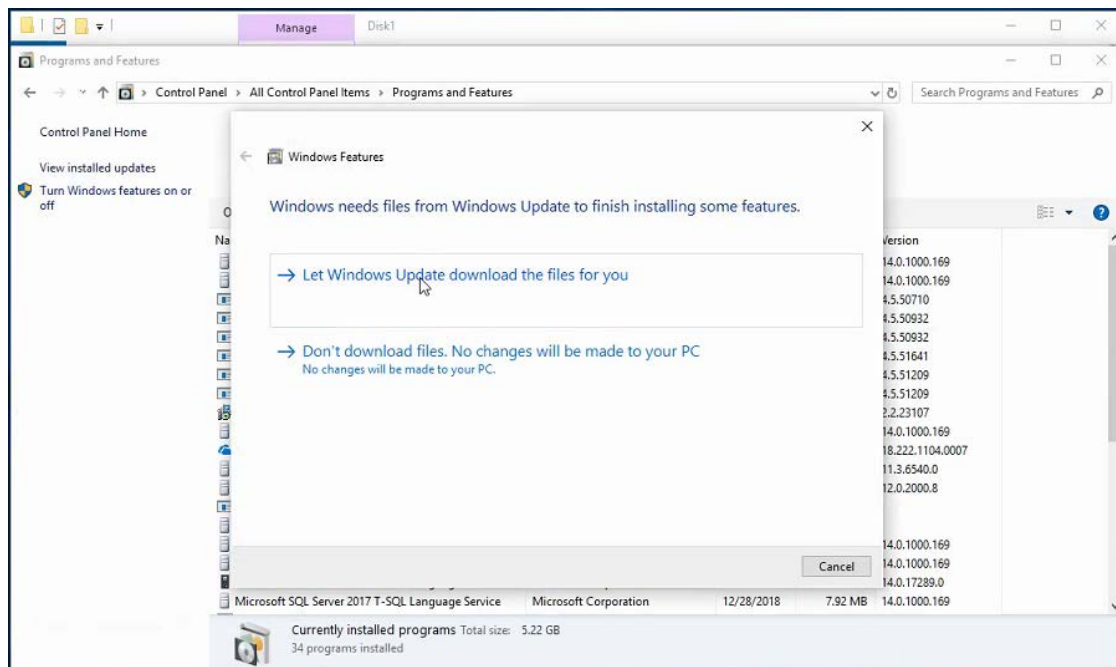
1. Before Installing ENCOR, the Dot Net 3.5 feature needs installed. To install, go to Control Panel and Program Features



- Click on Turn Windows features on or off and .NET Framework 3.5 (includes .NET 2.0 and 3.0)



Select Let Windows Updated download the files for you



## Chapter 2: ENCOR MFS Installation

---

1. Go to the installation source and open the FrontOffice folder.

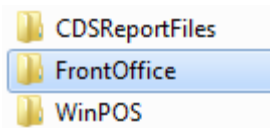


Figure 1-1. FrontOffice Folder

2. Open the Disk1 folder.

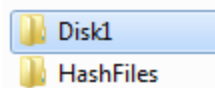


Figure 1-2. FrontOffice > Disk1 Folder

3. Right click and Run as Administrator the `Setup.exe`.

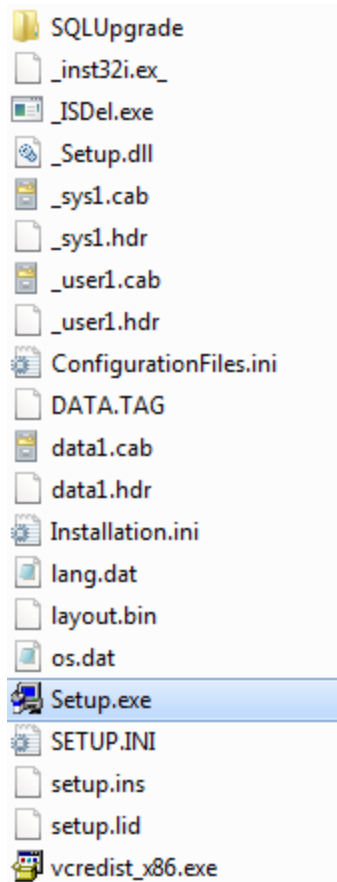


Figure 1-3. FrontOffice > Disk1 > Setup.exe

**Note:**

The ENCOR Installation runs with elevated privileges. If installing on Windows Server 2008 R2/Windows 7, the Windows user used to run the ENCOR installation is required to be the same Windows user that installed SQL Server. If installing on Server 2012 R2/Windows 10/Windows Server 2016 using a non-administrator user, the user name and password of a user that installed SQL Server will be required to run the installation. In the example below the installation is being ran as ENCOR User who is part of the Administrators group.

- 4. The installation begins preparations. No action is necessary at this time.

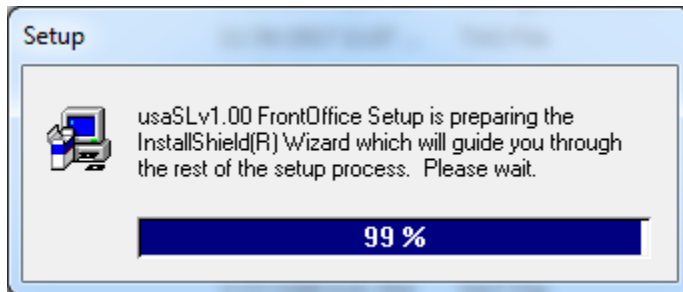
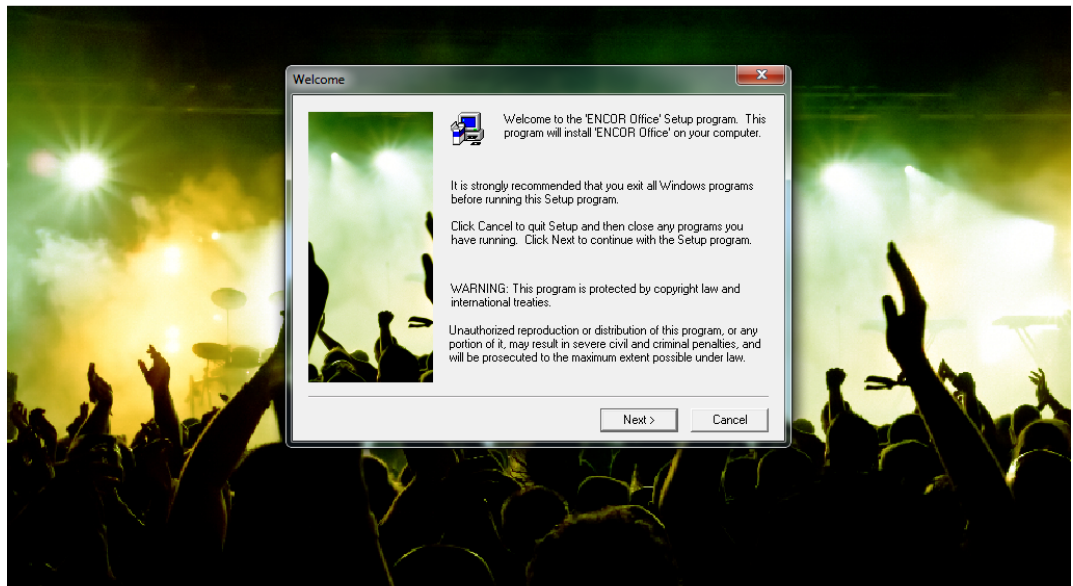


Figure 1-4. Installation Begins

- 5. The welcome screen appears. Click **Next**.

***ENCOR Office Installation***

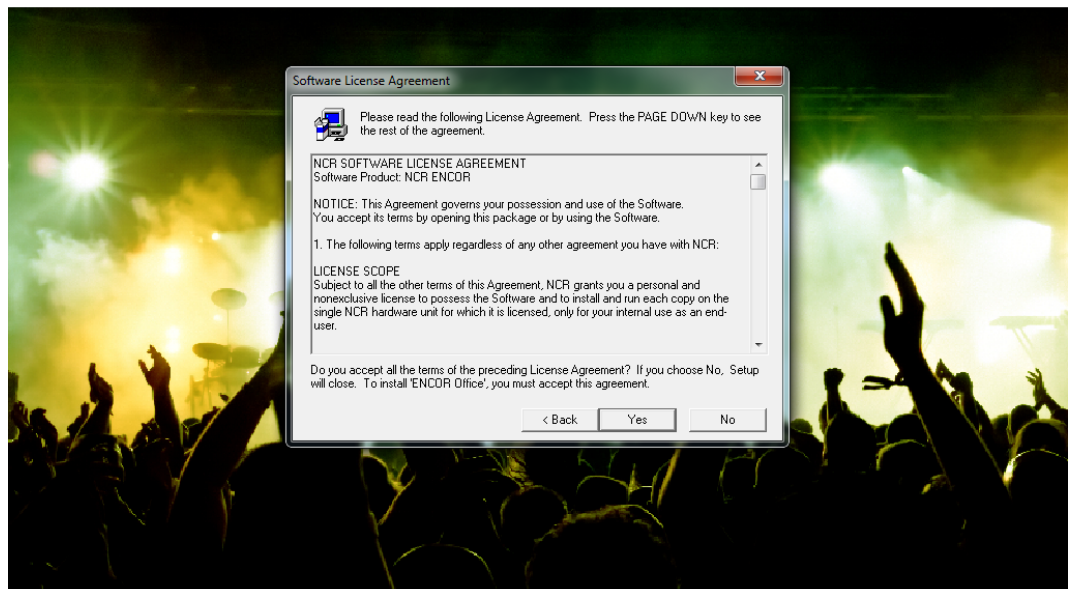


© 2017 NCR  
All Rights Reserved  
ENCOR is a trademark of NCR

commerce made complete

Figure 1-5. ENCOR Setup - Welcome

- 6. Click **Yes** to accept the License Agreement.

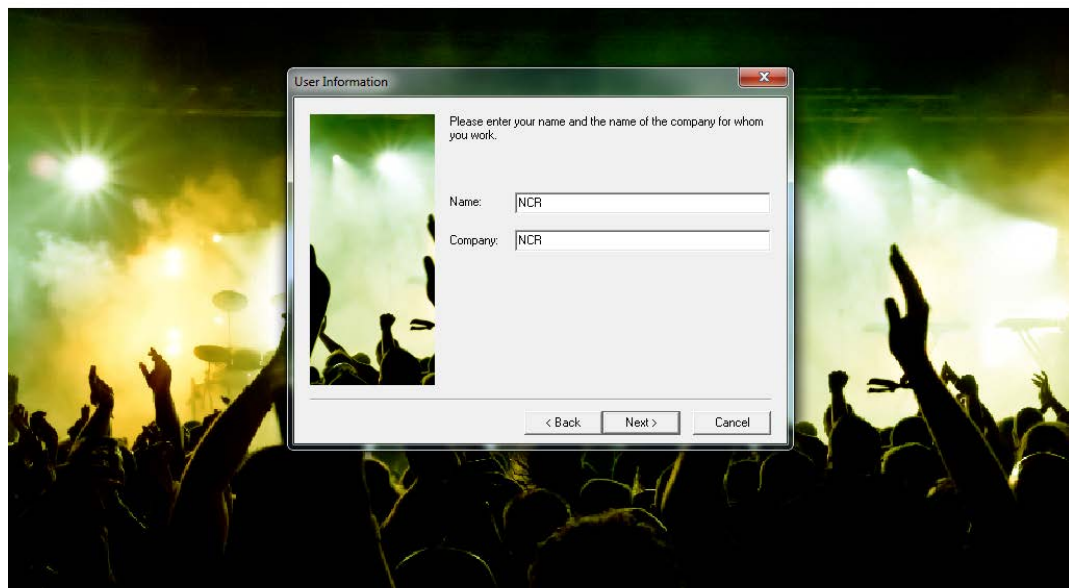
**ENCOR Office Installation**

© 2017 NCR  
All Rights Reserved  
ENCOR is a trademark of NCR

commerce made complete

**Figure 1-6. ENCOR Setup - License Agreement**

7. Enter your name and the name of the company then click Next.

**ENCOR Office Installation**

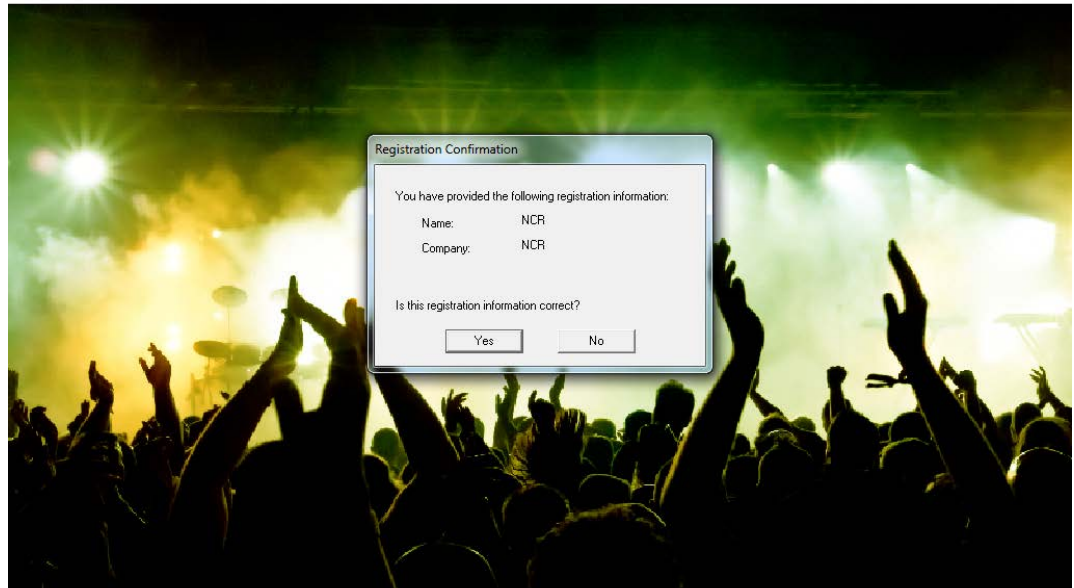
© 2017 NCR  
All Rights Reserved  
ENCOR is a trademark of NCR

commerce made complete

**Figure 1-7. ENCOR Setup - User Information**

8. Click **Yes** to confirm the registration information.

*ENCOR Office Installation*



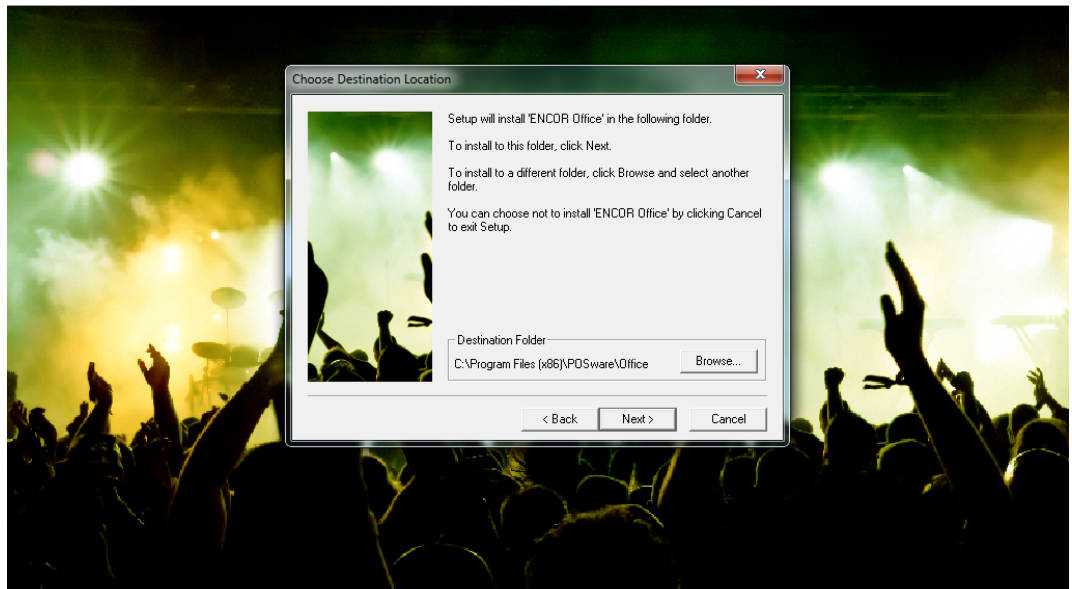
© 2017 NCR  
All Rights Reserved  
ENCOR is a trademark of NCR

commerce made complete

**Figure 1-8.ENCOR Setup - Registration Confirmation**

9. Verify the default installation destination folder or click **Browse** to change the installation location then click **Next**.

**ENCOR Office Installation**



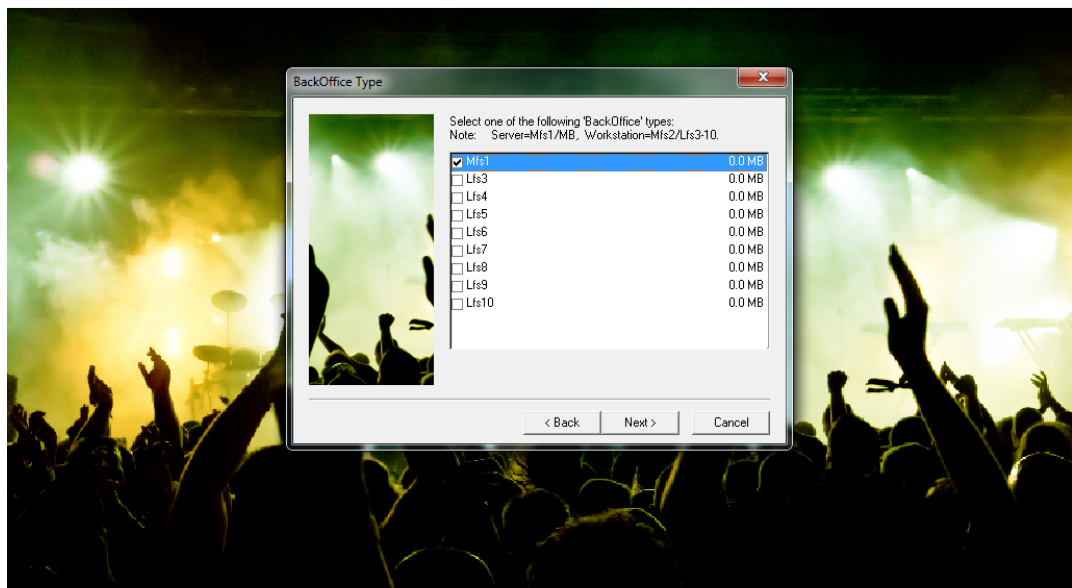
© 2017 NCR  
 All Rights Reserved  
 ENCOR is a trademark of NCR

commerce made complete

Figure 1-9. ENCOR Setup - Destination Location

10. Click **Next** to accept Mfs1 as the back office type.

**ENCOR Office Installation**



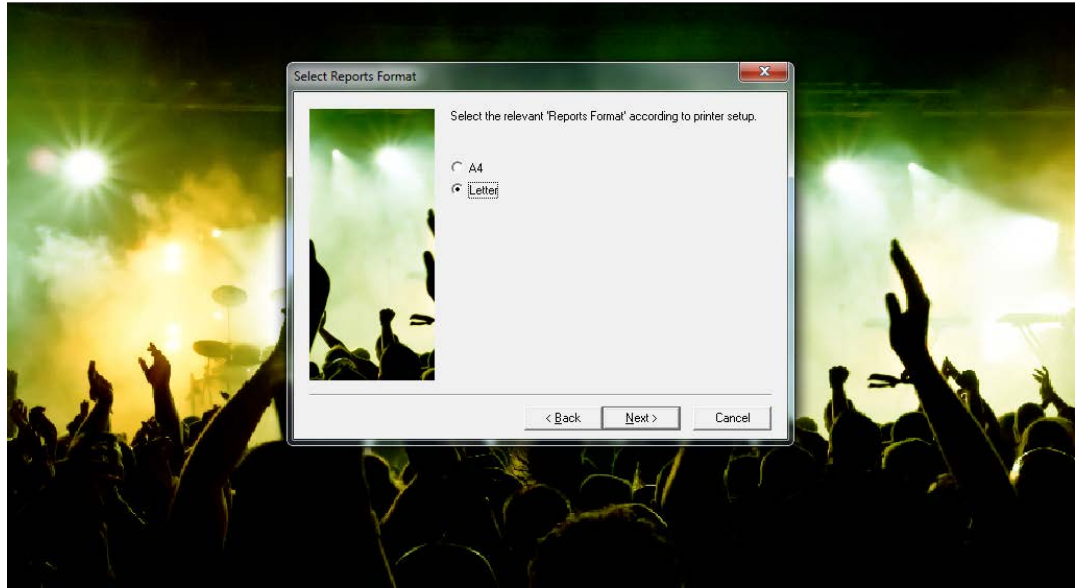
© 2017 NCR  
 All Rights Reserved  
 ENCOR is a trademark of NCR

commerce made complete

Figure 1-10. ENCOR Setup - BackOffice Type

11. Verify the default report format of Letter or select the appropriate report format then click **Next**.

*ENCOR Office Installation*



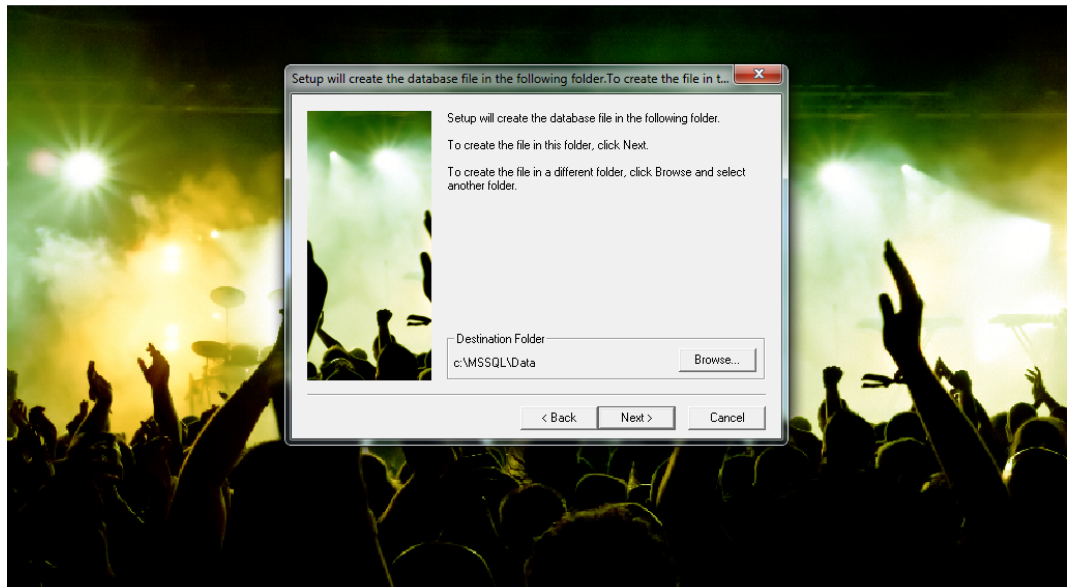
© 2017 NCR  
All Rights Reserved  
ENCOR is a trademark of NCR

commerce made complete

Figure 1-11. ENCOR Setup - Select Report Format

12. Confirm the location of the database or change the location if desired then click **Next**.

**ENCOR Office Installation**



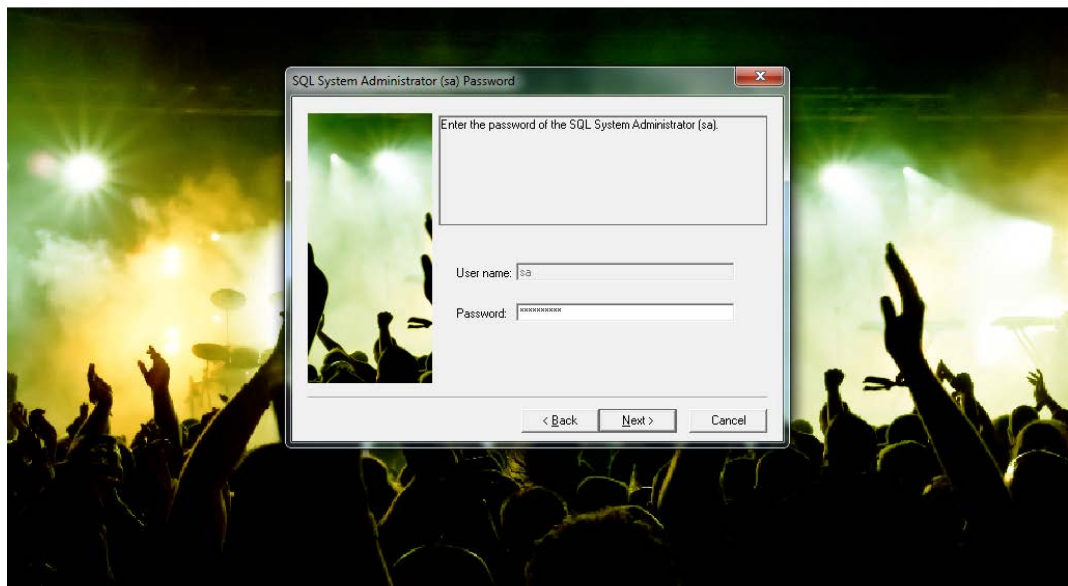
© 2017 NCR  
All Rights Reserved  
ENCOR is a trademark of NCR

commerce made complete

**Figure 1-12. ENCOR Setup - Database Location**

13. Enter the SQL Server System Administrator (sa) password then click **Next**.

**ENCOR Office Installation**



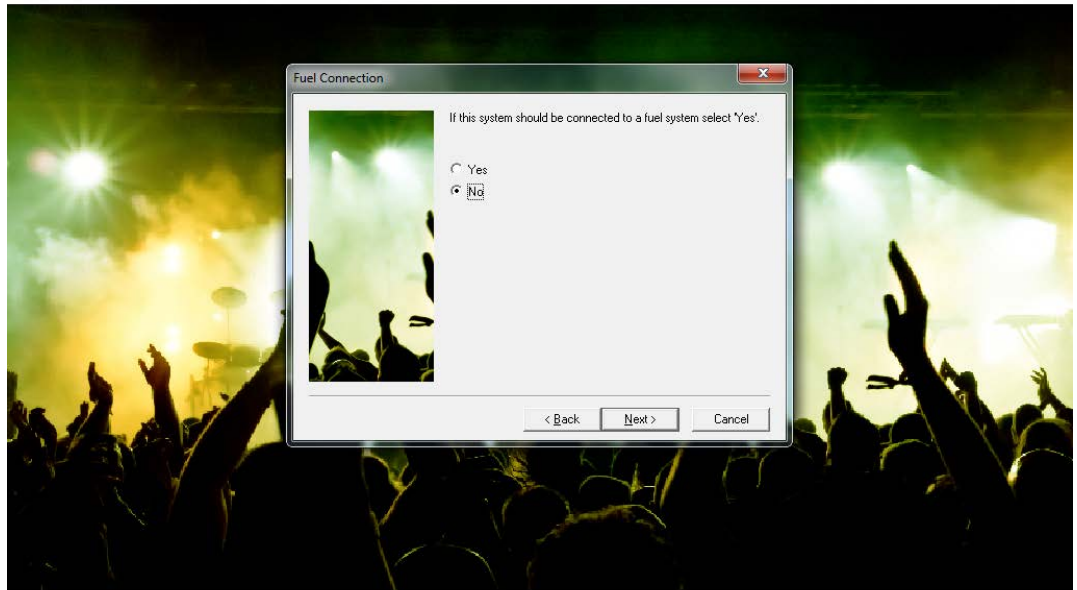
© 2017 NCR  
All Rights Reserved  
ENCOR is a trademark of NCR

commerce made complete

**Figure 1-13. ENCOR Setup - SQL sa Password**

14. If this system should be connected to a fuel system, select **Yes**; otherwise, select **No**. Click **Next**.

**ENCOR Office Installation**



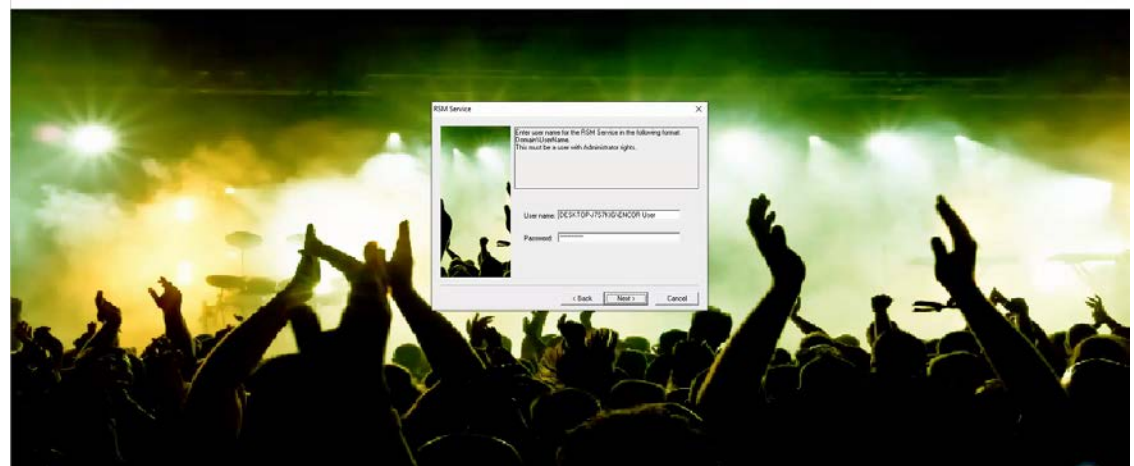
© 2017 NCR  
All Rights Reserved  
ENCOR is a trademark of NCR

commerce made complete

Figure 1-14. ENCOR Setup - Fuel System

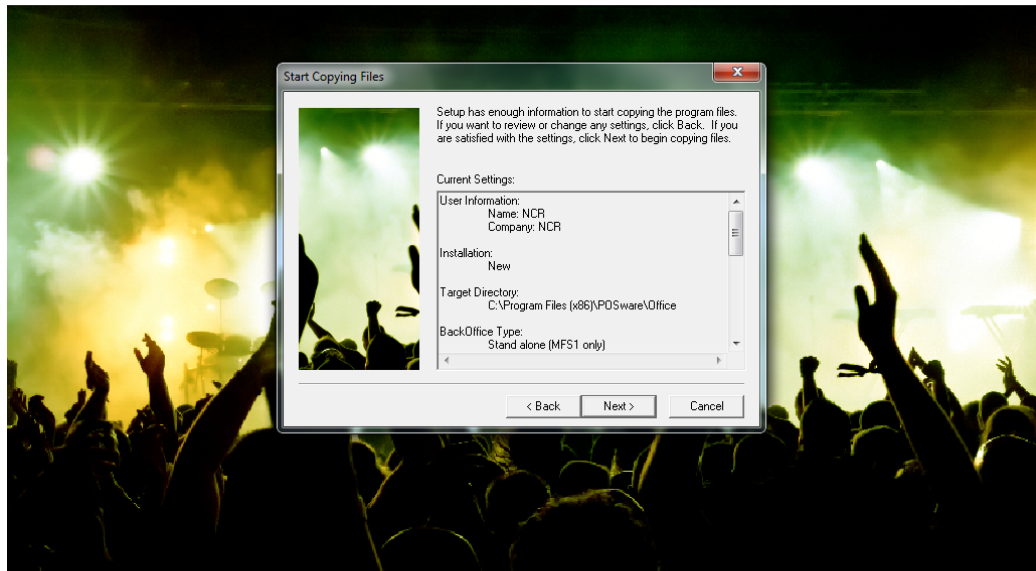
15. Enter the Created User name and Password for the RSM Service (ex ENCOR User) then click **Next**.

**ENCOR Office Installation**  
Version: 1.0.0.0-082



- Verify the settings. If changes need to be made, click **Back**. If no changes are necessary, then click **Next** to start copying files.

*ENCOR Office Installation*

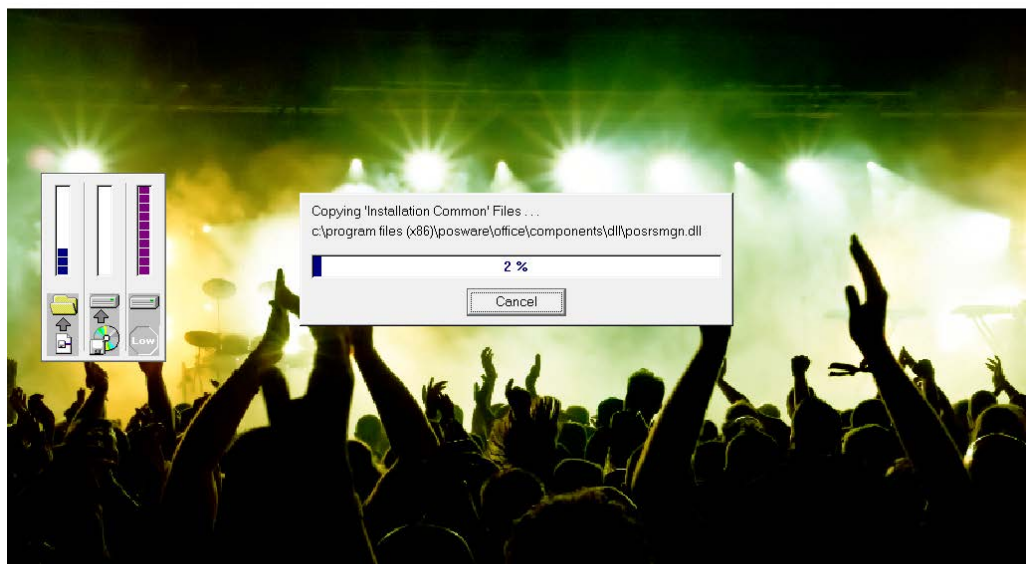


© 2017 NCR  
All Rights Reserved  
ENCOR is a trademark of NCR

commerce made complete

**Figure 1-15. ENCOR Setup - Start Copying Files**The software is installed on the system. No action is necessary at this time.

*ENCOR Office Installation*



© 2017 NCR  
All Rights Reserved  
ENCOR is a trademark of NCR

commerce made complete

**Figure 1-16. ENCOR Setup - Copying Files**

17. Edit the necessary lines of the HOSTS file, being sure to remove the # sign from the beginning of the SUBNETMASK line or services will not start after a reboot of MFS. Save the changes then close Notepad.

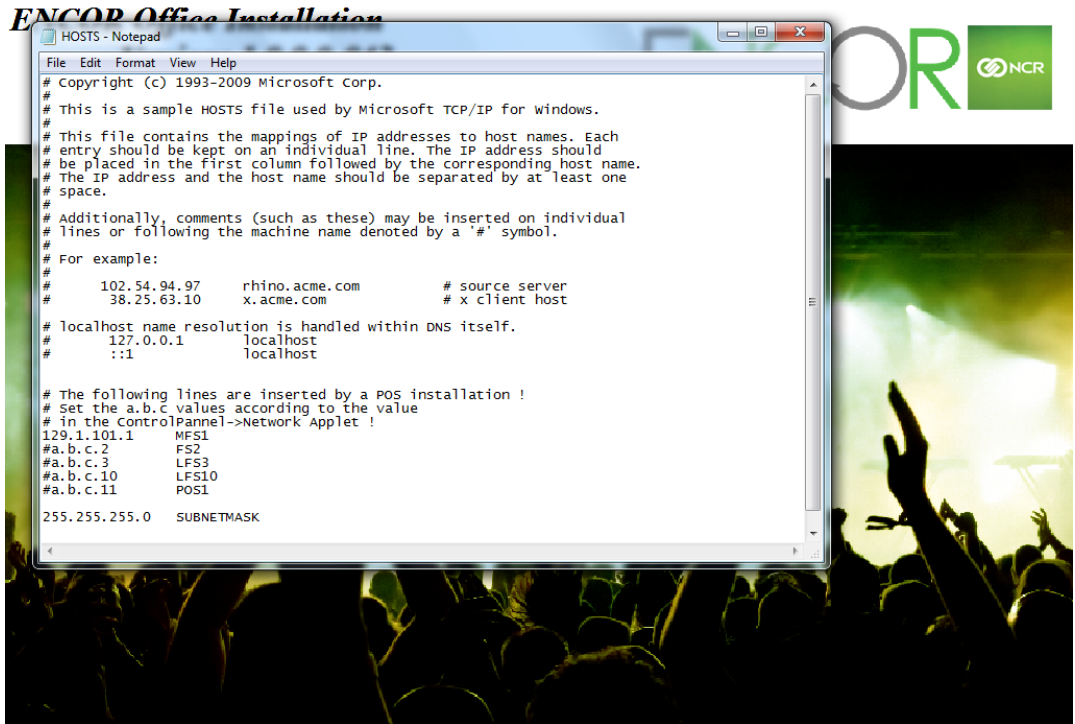
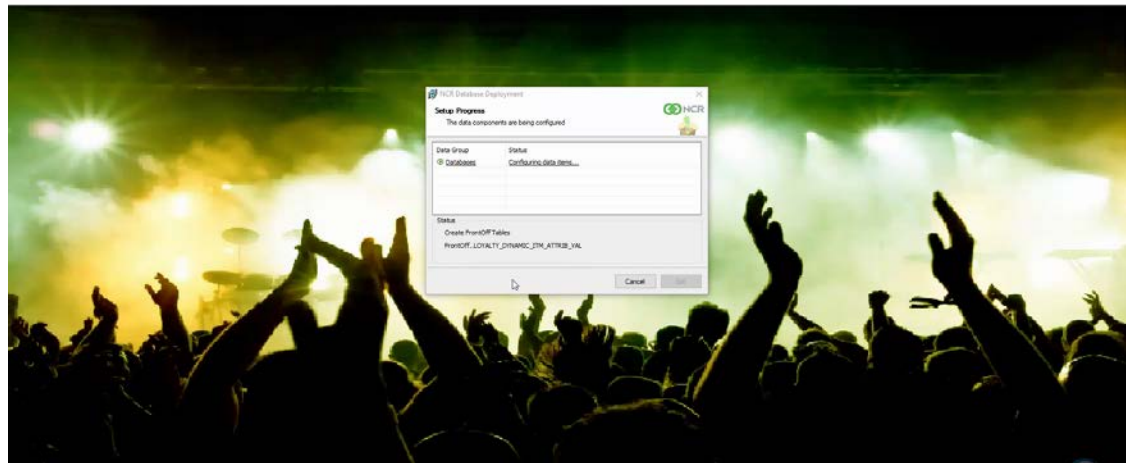


Figure 1-17. ENCOR Setup - Edit HOSTS File

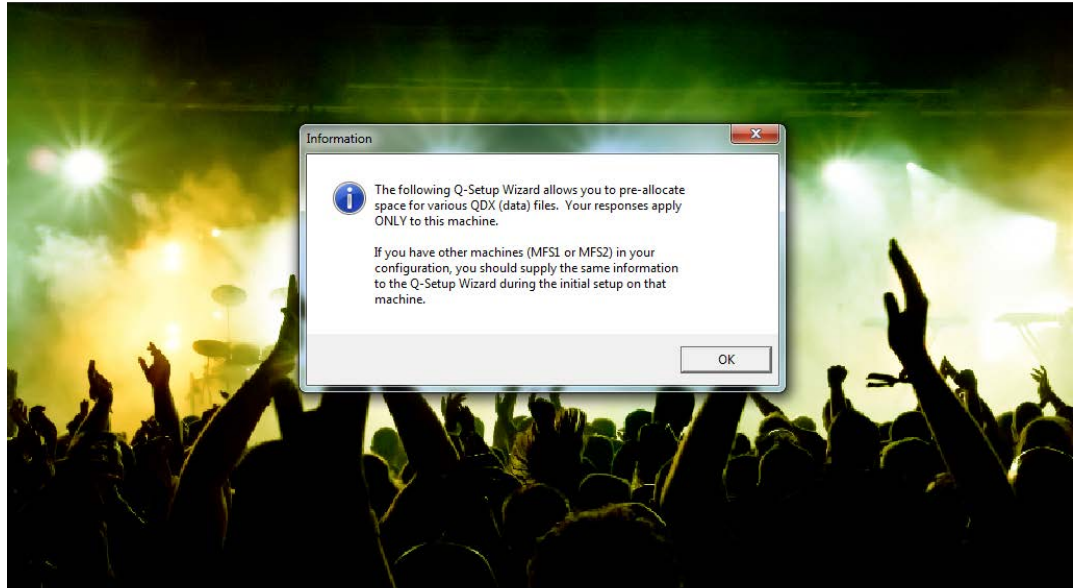
18. FrontOffice Database will install and click Next

ENCOR Office Installation  
Version: 1.0.0.0-082



19. Click **OK** to start the Q-Setup Wizard.

*ENCOR Office Installation*



© 2017 NCR  
 All Rights Reserved  
 ENCOR is a trademark of NCR

commerce made complete

Figure 1-18. ENCOR Setup - Q-Setup Wizard

21. Click **Next** to proceed.

*ENCOR Office Installation*

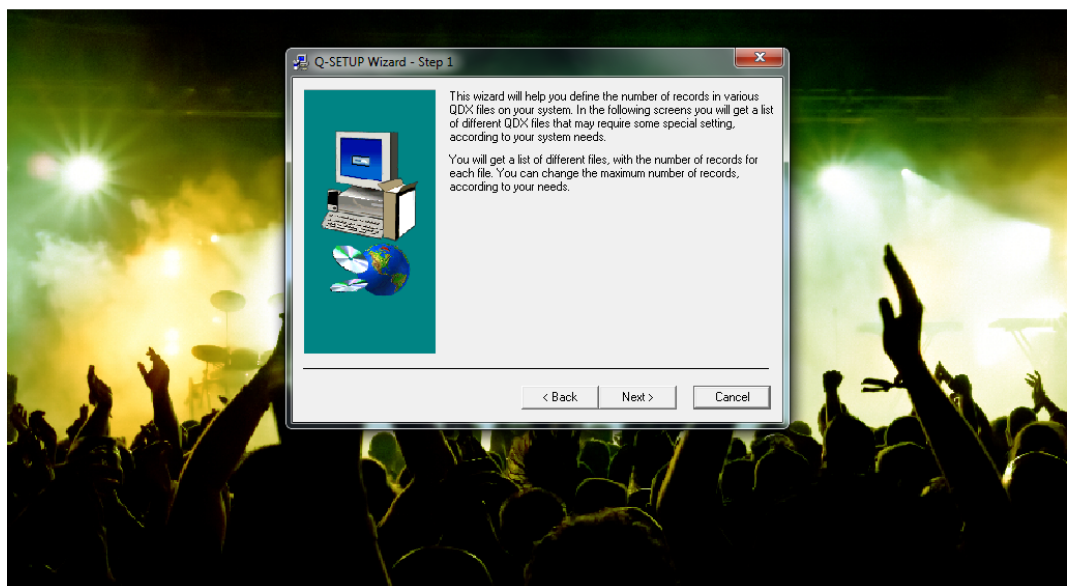


Figure 1-19. ENCOR Setup - Q-Setup Wizard Step 1

22. Click **Next** to proceed.

### *ENCOR Office Installation*

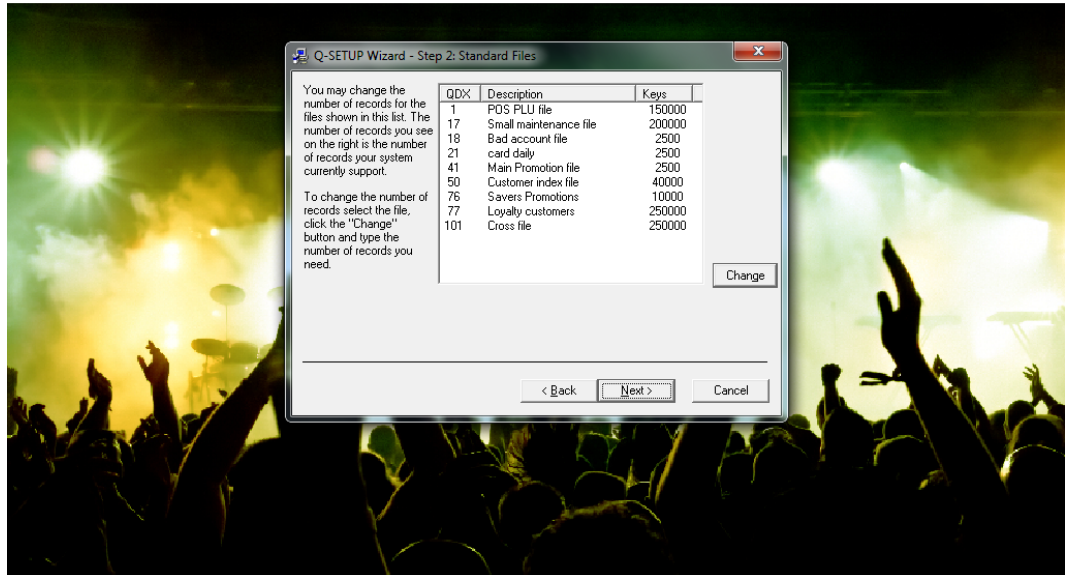


Figure 1-20. ENCOR Setup - Q-Setup Wizard Step 2

23. Click **Next** to proceed.

### *ENCOR Office Installation*

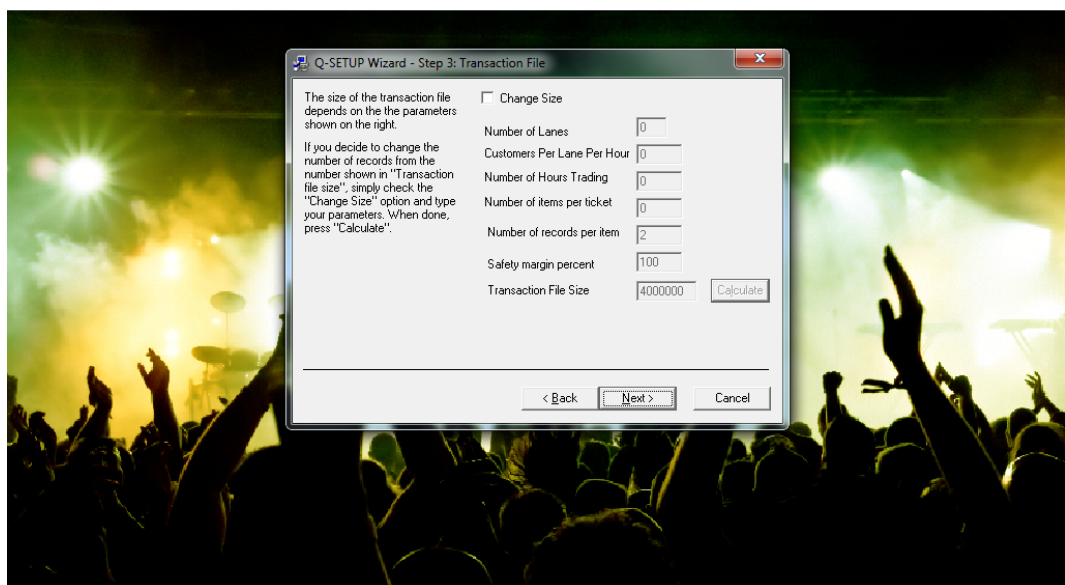


Figure 1-21. ENCOR Setup - Q-Setup Wizard Step 3

24. Click **Next** to proceed.

**ENCOR Office Installation**

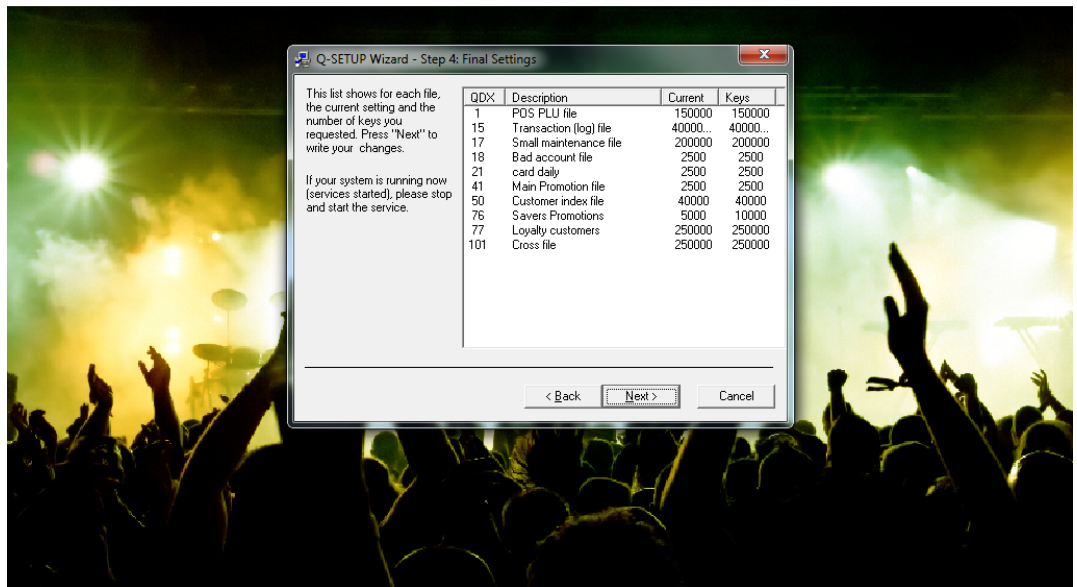


Figure 1-22. ENCOR Setup - Q-Setup Wizard Step 4

25. Click **Yes** to proceed.

**ENCOR Office Installation**

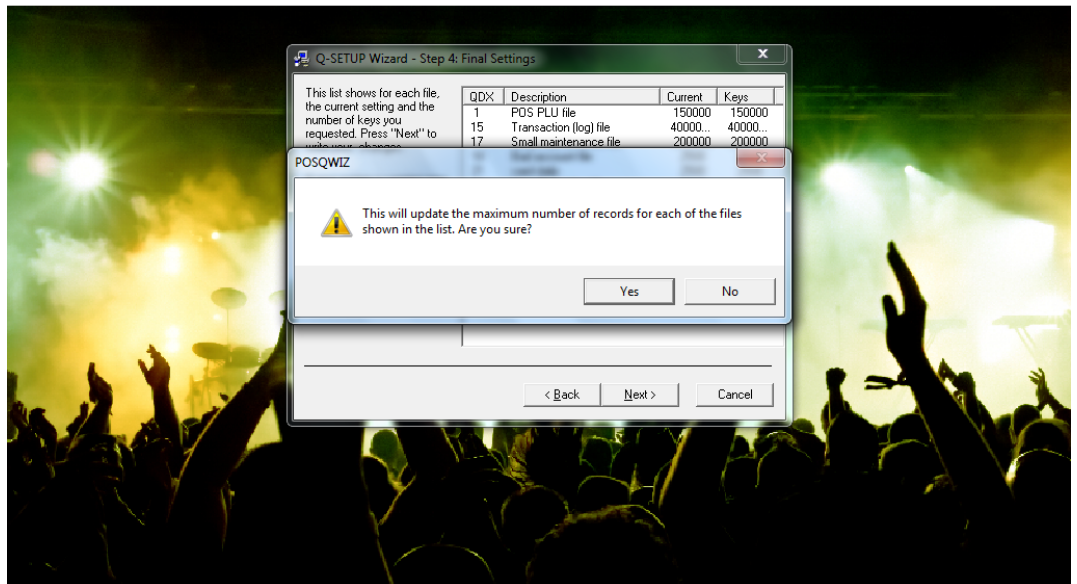


Figure 1-23. ENCOR Setup – POSQWIZ

26. The **ENCOR** database is deployed. No action is necessary at this time.

*ENCOR Office Installation*



© 2017 NCR  
All Rights Reserved  
ENCOR is a trademark of NCR

commerce made complete

27. Click **Next**. Note that beginning with this point, if the installer is canceled, critical **ENCOR** components will not be installed, causing the application to not be able to run correctly.

*ENCOR Office Installation*

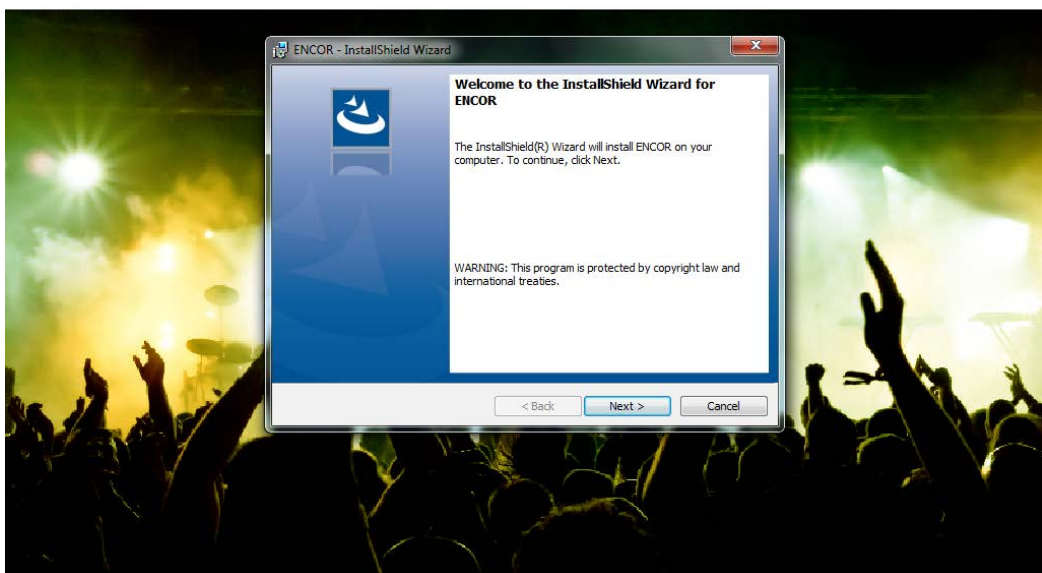


Figure 1-24. ENCOR Setup - ENCOR InstallShield Wizard

28. Select the **I accept the terms in the license agreement** radio button then click **Next**.

### *ENCOR Office Installation*

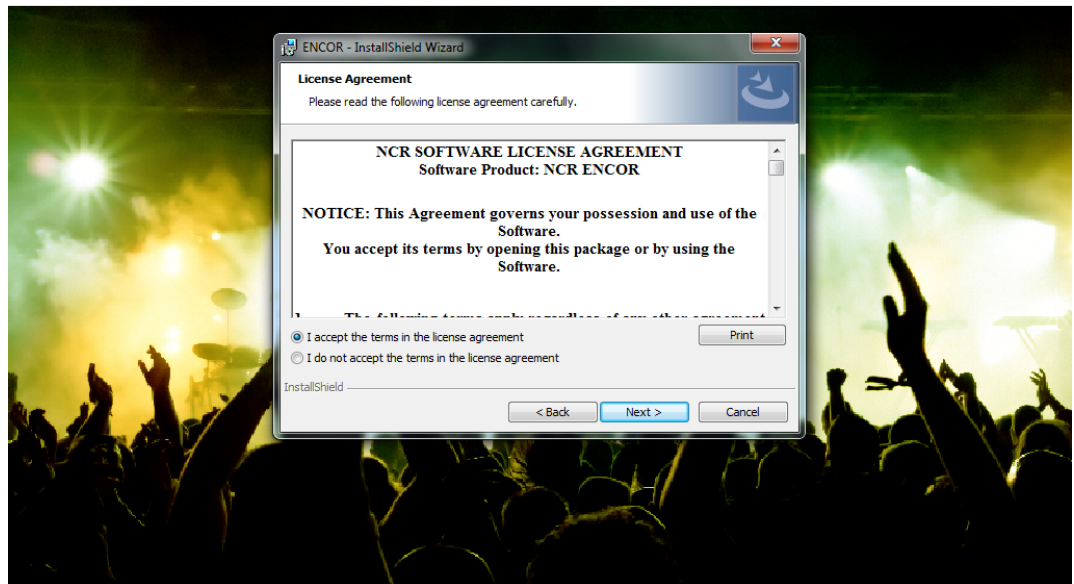


Figure 1-25. ENCOR Setup - License Agreement

29. If this computer is to be the MFS only with the **ENCOR** and Back Office databases deployed elsewhere, select Client. If this computer is to house the **ENCOR** and/or Back Office databases, select Server, select which databases are to be deployed on this system, then click **Next**.

#### **Note:**

On the MFS install, the FrontOff database is always deployed to this (the MFS) computer and will not be deployed on any other computer install such as LFS3. The **ENCOR** and Back Office databases need to be deployed only once each at a store. This installer allows the destinations of each to be user selectable. Deploying either the **ENCOR** or Back Office database to multiple computers at a store will cause issues.

#### **Note:**

One of or both the **ENCOR** and Back Office Server options must be selected when selecting the Server Installation Type. Should no databases be selected with the Server option, a message will appear stating the following:

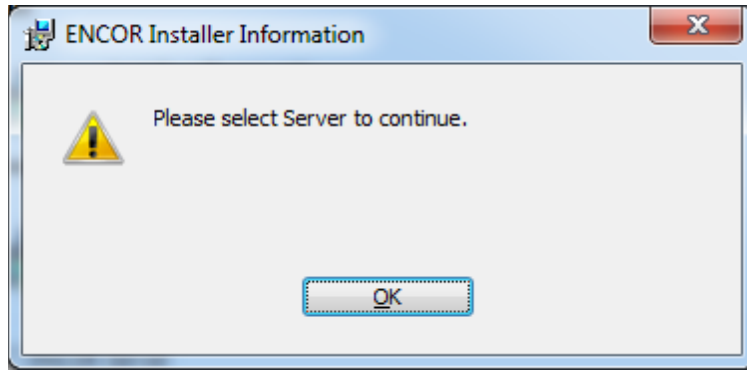


Figure 1-26. ENCOR Setup - ENCOR Installer Information

Should this appear, click **OK** to return to the Installation Type screen and select a database. If the **ENCOR** and/or Back Office databases are on a different computer, select the Client Installation Type.

### *ENCOR Office Installation*

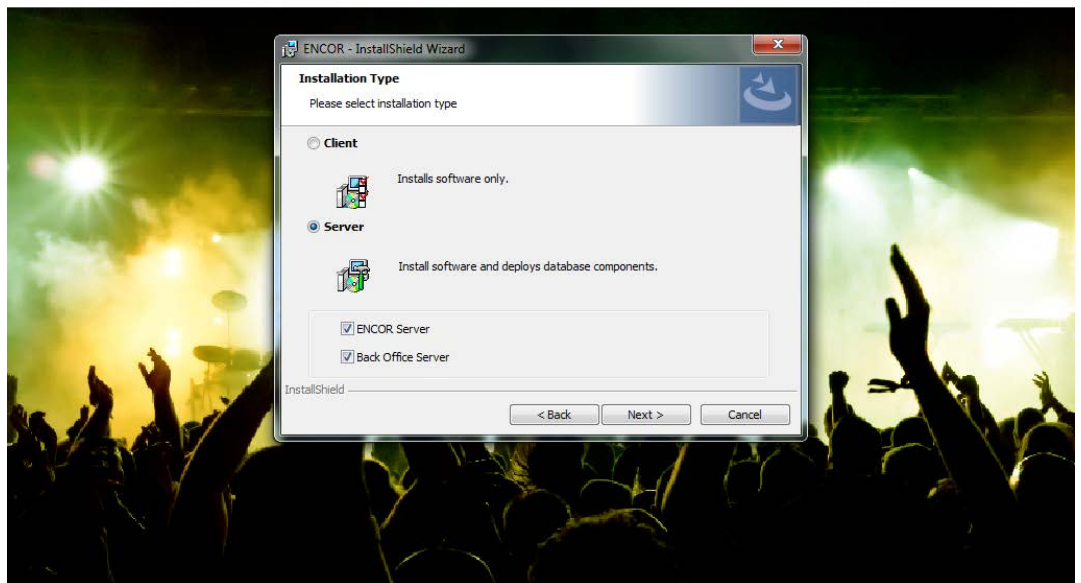


Figure 1-27. ENCOR Setup - Installation Type

30. Click **Install**.

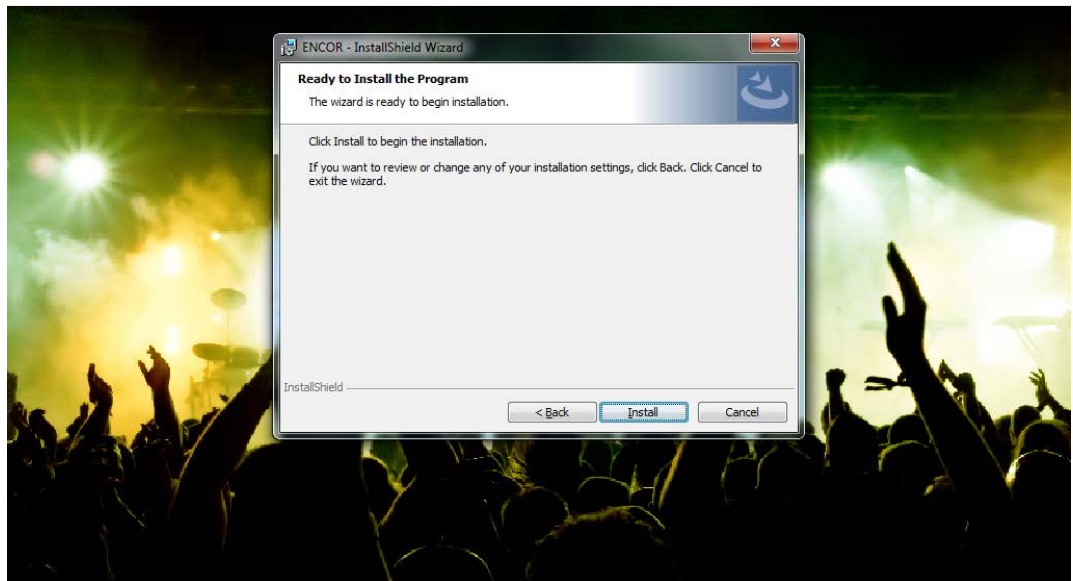
*ENCOR Office Installation*

Figure 1-28. ENCOR Setup - Install Program

31. Program features are installed. No action is necessary at this time.

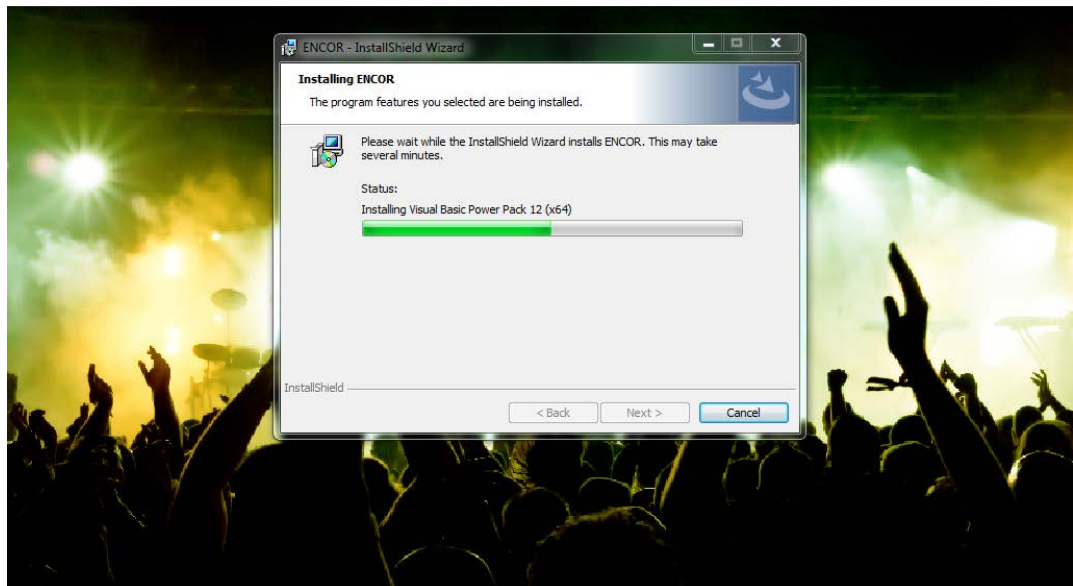
*ENCOR Office Installation*

Figure 1-29. ENCOR Setup - Program Features

32. Select or enter the database server that is to have the **ENCOR** database then enter the Login ID and Password to connect to it. Note if the **ENCOR** database is already deployed or will be deployed to a different computer, this

installation routine still requires that computer and login credentials be entered here. Click **Next** to continue.

### *ENCORA Office Installation*

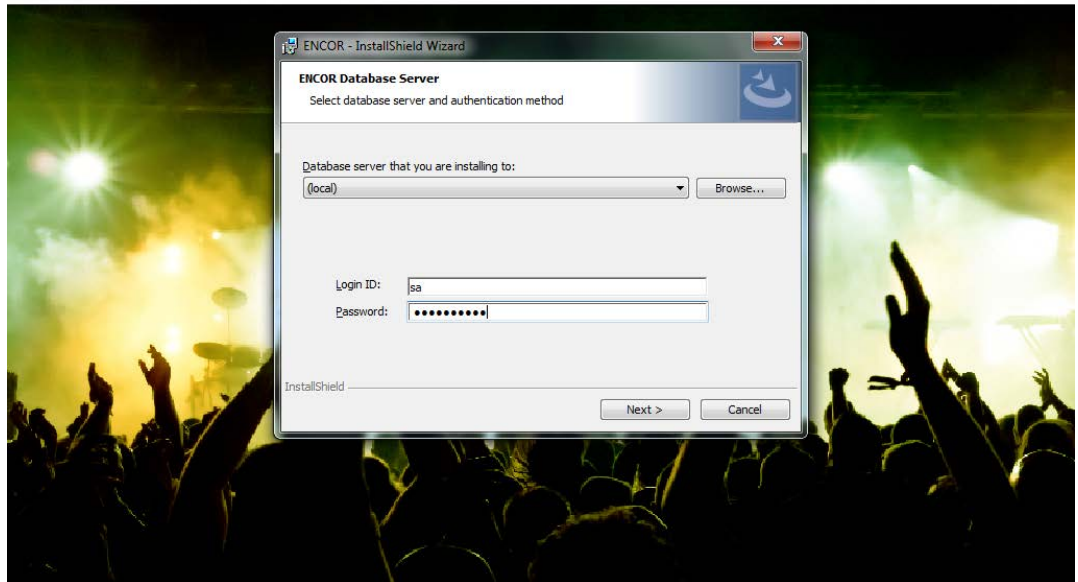


Figure 1-30. ENCORA Setup - ENCORA Database Credentials

33. Connectivity to the **ENCORA** database is verified if it was not selected to be deployed as part of this installation. If the installer cannot connect to the **ENCORA** database, the below error message is displayed. Click **Continue** to go back to the **ENCORA** Database Server screen to click the **Next** button to continue with the installation or click **Cancel** to re-enter the server, Login ID, and Password. If the installer can connect to the **ENCORA** database, this message is not displayed.

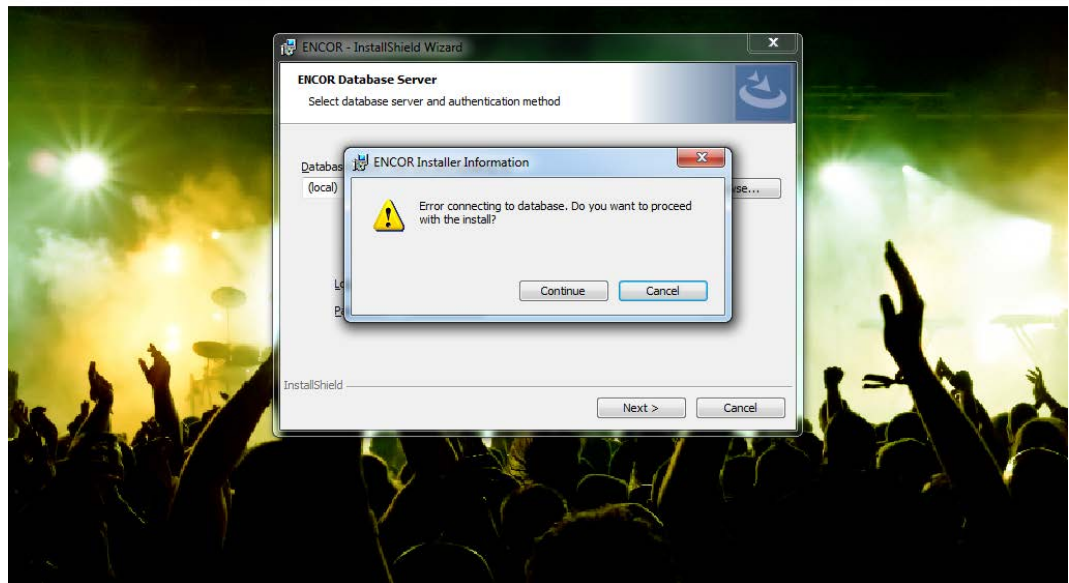
*ENCOR Office Installation*

Figure 1-31. ENCOR Setup - ENCOR Database Connection Error

34. Select or enter the database server that is to have the Back Office database then enter the Login ID and Password to connect to it. Note if the Back Office database is deployed to a different computer, this installation routine still requires that computer and login credentials be entered here. Click **Next** to continue.

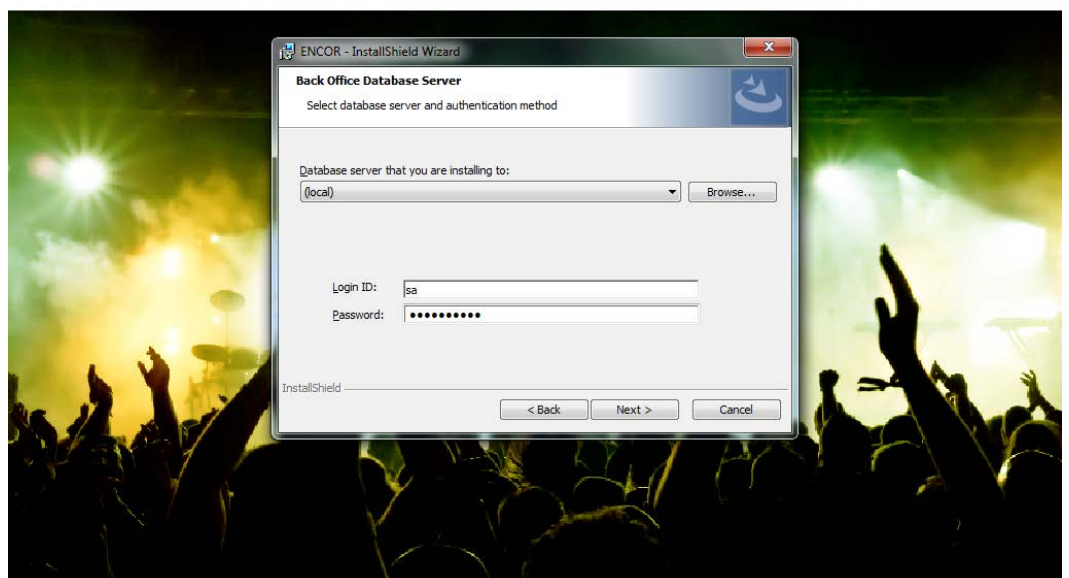
*ENCOR Office Installation*

Figure 1-32. ENCOR Setup - BackOffice Database Credentials

35. Connectivity to the Back Office database is verified if it was not selected to be deployed as part of this installation. If the installer cannot connect to the Back Office database, the below error message is displayed. Click **Continue** to go back to the Back Office Database Server screen to click the **Next** button to continue with the installation or click **Cancel** to re-enter the server, Login ID, and Password. If the installer can connect to the Back Office database, this message is not displayed.

***ENCOR Office Installation***

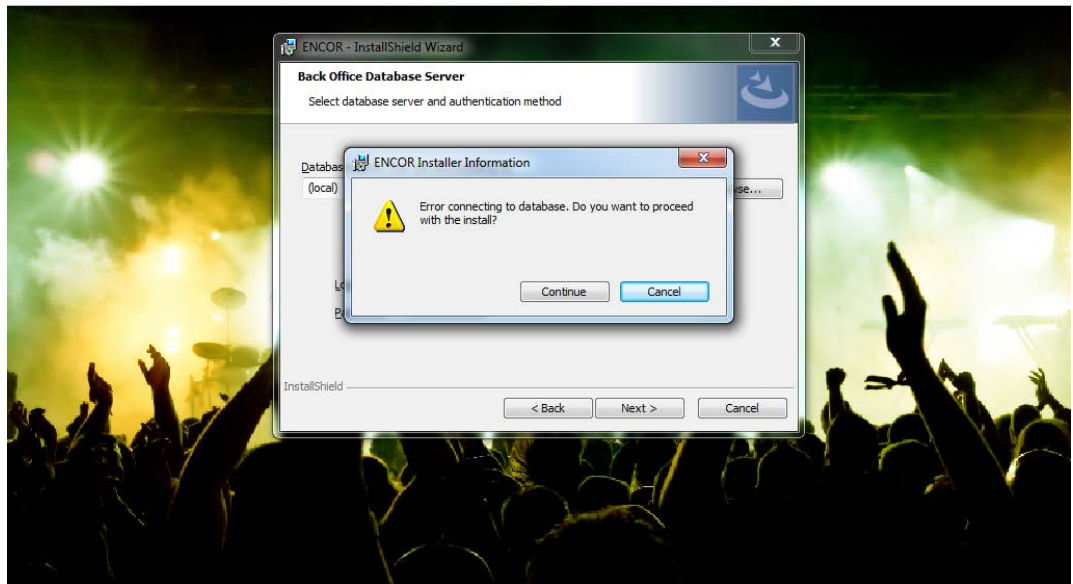


Figure 1-33. ENCOR Setup - BackOffice Database Connection Error

36. Additional components of **ENCOR** are installed. No action is necessary at this time.



38. If Server was selected as the installation type, the selected databases are deployed to this computer. If Client was selected, no databases are deployed and this screen is not displayed. No action is necessary at this time.

***ENCOR Office Installation***

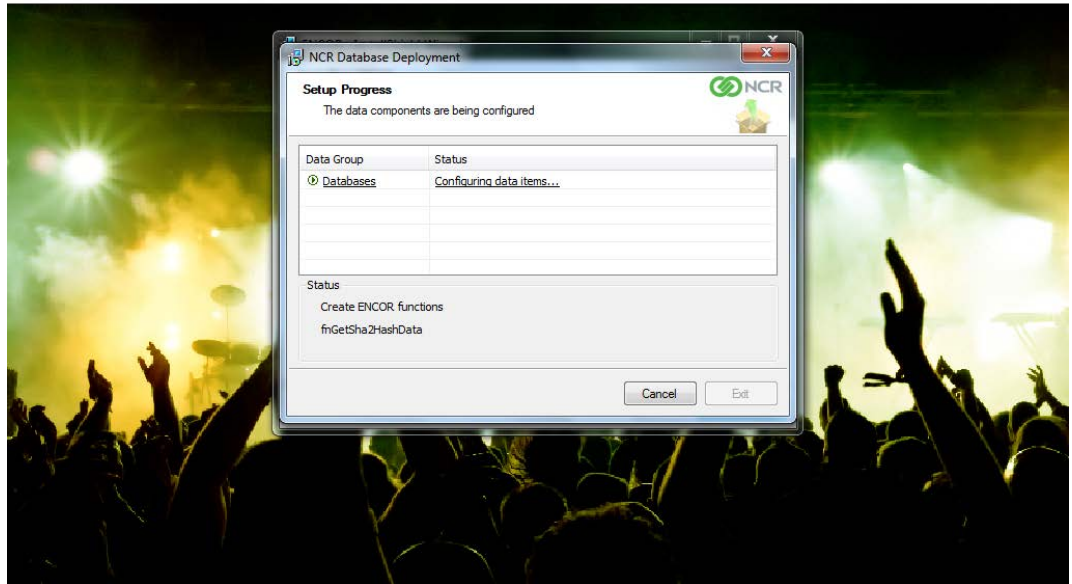


Figure 1-35. ENCOR Setup - ENCOR Database Deployed

39. Click **Finish**.

***ENCOR Office Installation***

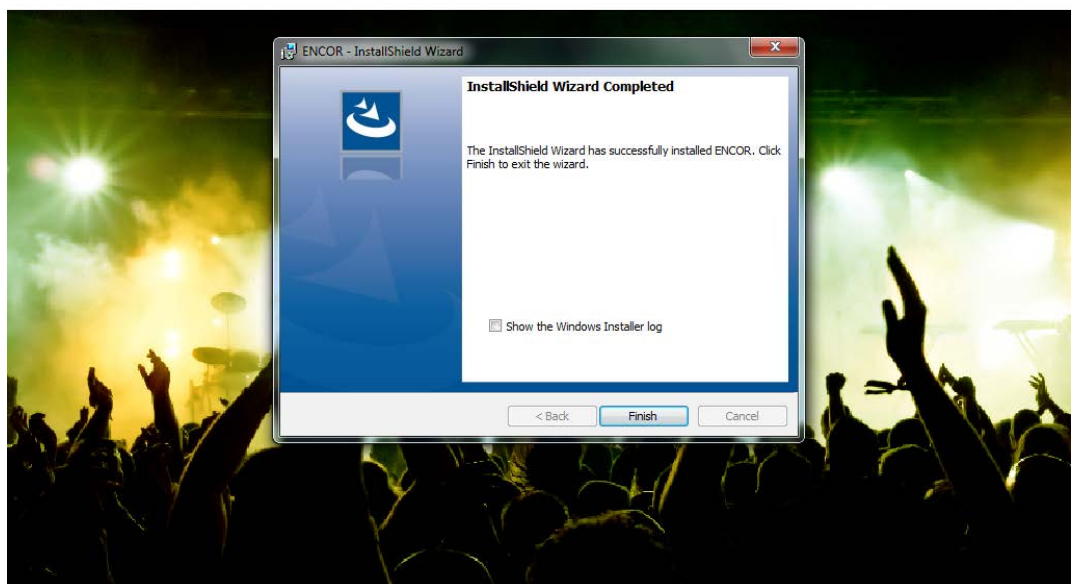
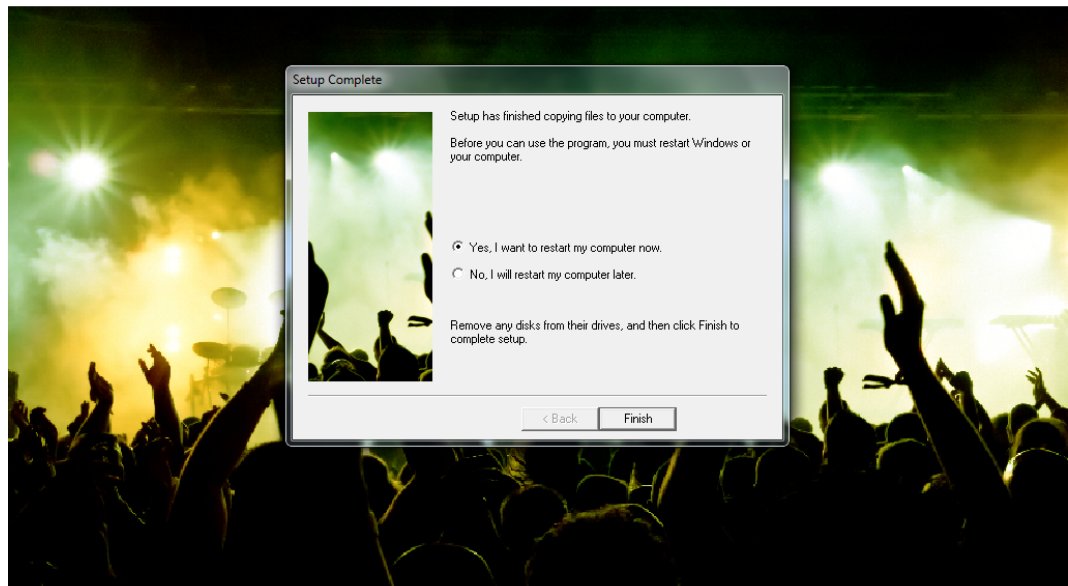


Figure 1-36. ENCOR Setup - ENCOR InstallShield Wizard Completed

40. Click **Finish** to reboot the computer immediately or select **No** and click Finish to reboot manually at a later time. The HASP Plug may now be installed.

### *ENCOR Office Installation*



© 2017 NCR  
All Rights Reserved  
ENCOR is a trademark of NCR

commerce made complete

**Figure 1-37. ENCOR Setup - Restart After Finish**

41. After reboot check POS Services. Open **ENCOR** and sign in with admin. Default admin password: **Ncr3ncor!**



---

## Chapter 3: Post Installation Setup

---

At this point the installer can manually remove the C:\ drive share **IF** shared from a previous install and share the C:\Pcmaster, C:\CDPackageRoot, C:\Program Files\POSWare and C:\Temp.

To implement this change, the user will need to do the following:

### **Removal of C Share Instructions**

- Right click on the C Drive.
- Click on Properties.
- Click on the Sharing tab.
- Click on the Advanced Sharing button.
- Unclick the 'share this folder' box.
- Click Apply.

### **Adding of the PCMaster Share**

- Right click on the PCMASTER Folder.
- Select Properties.
- Select the Sharing tab.
- Click the Advanced Sharing... button.
- Check the Share this folder check box.
- Click the Permissions button.
- Remove the Everyone group from the Group or user names list.
- Add the Administrators group and grant the group Full Control.
- Add the ENCORUSERS group and grant the group Read permissions only.
- Click Ok on all the Properties screens to close.

Repeat this step for all the recommended Folder shares.

### **Adding Users to proper Windows Groups (admin user rights required)**

- Navigate to Computer Management (Control Panel > Administrative Tools).
- Under Local Users and Groups, Select Users.
- Double click a user to display the User's Properties.
- In the Member Of tab, please make sure all users that are not assigned to the Administrators group are added to the ENCORUSERS group.
- Click Ok.

#### **Note:**

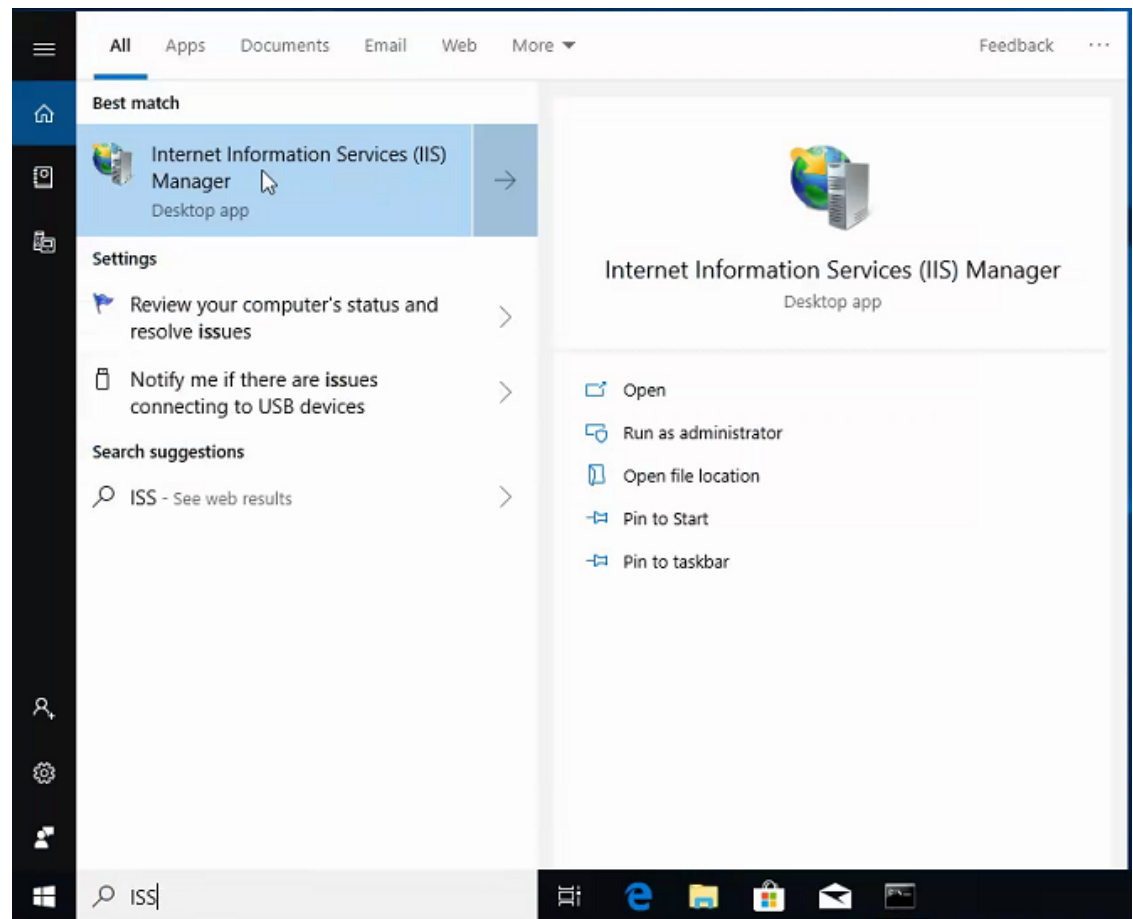
All Windows Users running ENCOR need to be created with the same user name and password on all MFS and LFS machines. These users also need to belong to the same groups (Administrators or ENCORUSERS).

### **Adding Inbound Firewall Rules**

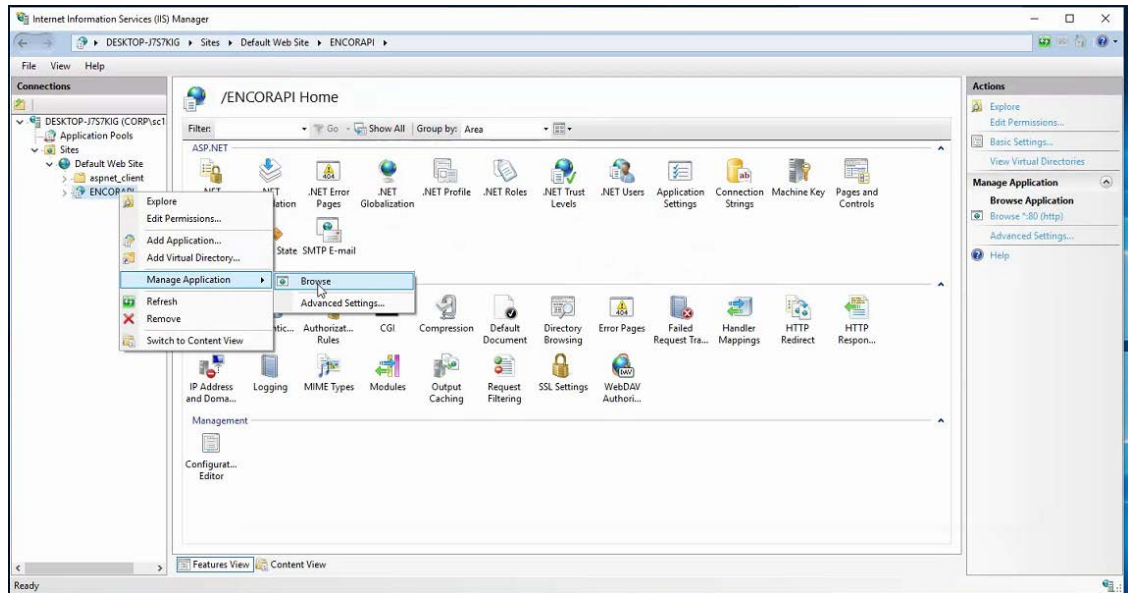
- TCP and UDP Port 345 (RSM)
- TCP port 1433 (SQL Server)
- TCP port 445 (File Sharing)

## Chapter 4: Verify IIS Connection

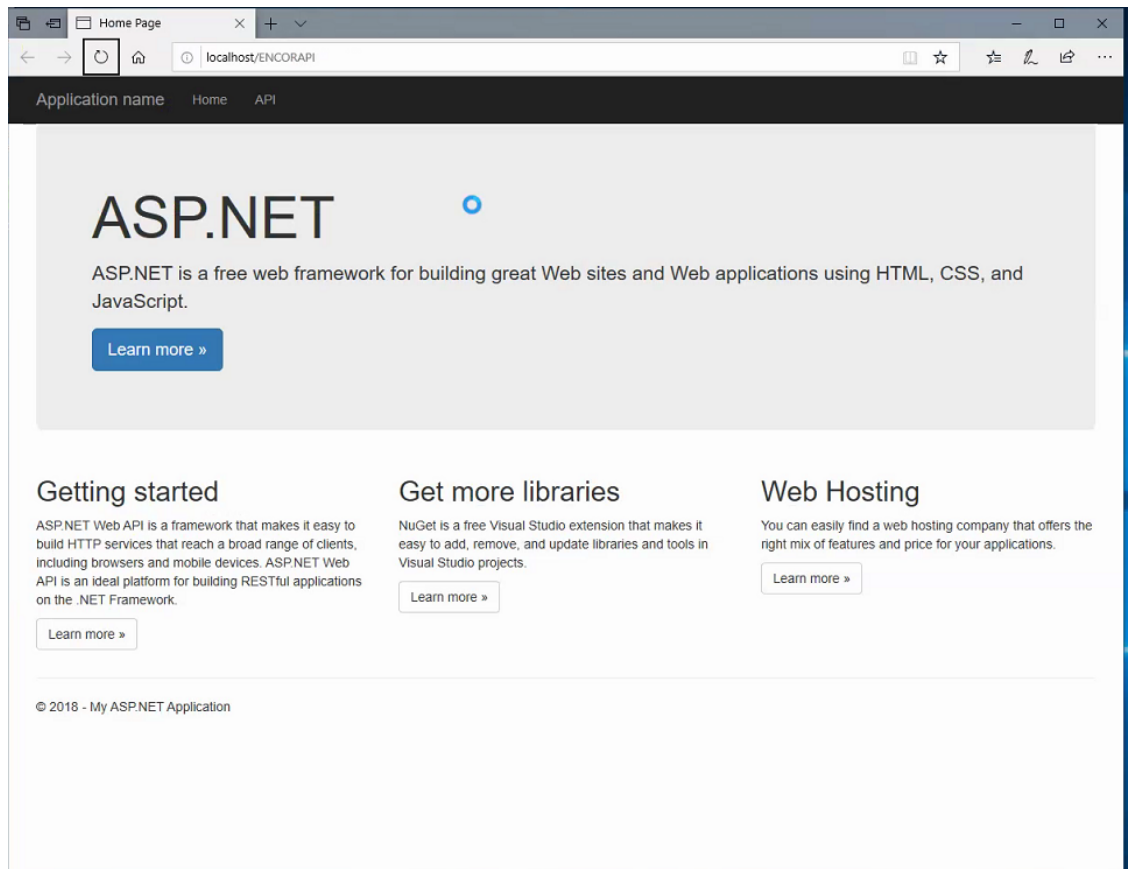
1. To verify the IIS Connection go to Window Search and type IIS



2. Internet Information Services IIS Manager Click on + next to Server, then the + next to Sites and Right Click on ENCORAPI. Click on Manage Application then Browse.



3. Once connected this screen should appear.





© NCR Corporation, 2019

NCR endeavors to ensure that the information in this document is correct and fairly stated but does not accept liability for any error or omission.

The development of NCR products and services is continuous and published information may not be up to date. It is important to check the current position with NCR. This document is not part of a contract or license, save insofar as may be expressly agreed.

---

NCR Corporation  
864 Spring Street  
Atlanta, GA 30308

P/N 89000938  
PIN 45002/032