

ENCOR

- Hardware Setup Guide,
■ NCR RealPOS XR7 (Class 7702)
■ Windows 10 IoT
■ Version 1.0.1.3
■



ENCOR Hardware Setup Guide, NCR RealPOS XR7

Date of Issue	Product ID Num.	Part Number	Brief Description
April 2019	45002/092	89000944	1.0.1.3 Release

©Copyright NCR Corporation 1995-2019
All rights reserved

This publication is protected by federal copyright law. This document and its contents are the proprietary, confidential information and property of NCR Corporation ("NCR"). Unauthorized disclosure, reproduction, distribution or use of this document and/or its contents in any form is strictly prohibited. No part of this publication may be reproduced or transmitted into any human or computer language in any form or by any means, stored in a retrieval system, transmitted, redistributed, translated or disclosed to third parties, or de-compiled in any way including, but not limited to, photocopy, photograph, electronic, mechanical, magnetic or manual without the express written permission of NCR or its licensors, if any. This document, notwithstanding the above, may be distributed in electronic or printed form by NCR to personnel who are employed by either (a) a licensee and end user of the subject system of this document or (b) personnel from an authorized NCR Channel Partner or Solution Provider of the subject system of this document. All copies of this document so distributed and/or so authorized, shall contain a full copy of this copyright notice.

NCR has prepared this document as a guide to the proper installation, operation, customization and/or maintenance of NCR products. The drawings and specifications contained herein are the property of NCR and/or its licensors.

NCR endeavors to ensure that the information in this document is correct and fairly stated but does not accept liability for any error or omission. NCR makes no representation or warranties with respect to the contents hereof, and specifically disclaims any implied warranties of merchantability or fitness for a particular purpose or non-infringement. No commitments by NCR or its suppliers are made by or from this documentation which is provided for information only.

Development of NCR products and documentation is continuous: NCR reserves the right to revise this publication and to make changes at any time to the contents hereof or to the products herein described or discussed without notice and without any obligation for NCR to notify any person or organization of such revision or changes. Information published in this document will likely be superseded, and it is recommended that users regularly check for updates and newer versions.

The trademarks NCR, Retailix, StoreNext, ISS45, ScanMaster, R10, ACS, PocketOffice, RPO, RBO, ABO, Connected Payments, ServerEPS, Connected Services, Connected Loyalty, WinEPS and all other NCR product names are registered trademarks or trademarks of NCR; all other trademarks or registered trademarks are the property of their respective owners. Third-party products, services, or company names referenced in this document may be trademarked or copyrighted by their respective owners, and are for identification purposes only. Copyrights, trademarks and license agreements shall be governed and construed in accordance with the laws of the State of New York and the Federal Arbitration Act, and shall benefit NCR, its successors, and assigns.

Address comments and corrections regarding this document to:

Attn: Software Program Director
NCR
864 Spring Street
797 Commonwealth Drive
Atlanta, GA 30308

Configure Bios and Windows 10IoT on NCR XR7 (7702) POS for ENCOR

Check the BIOS settings to ensure that the Network : IBA GE Slot 00C8 v1550 is Disabled and under Boot Device Priority that the 1st device is set to the HDD. If the Network boot is enabled, the boot time of the POS will be considerably longer.

Note: If you are restoring the image using the D370-1066-0100-01.00.00.00.wim image. The bootable USB drive will temporarily be set as the 1st device in the Boot Device Priority. Once the image is complete the Boot Priority should be set back to HDD.

Note: Minimum BIOS version should be 9.0.8.1 which can be upgraded by obtaining a bootable USB Key. An image of the Windows 10 IoT 64 Bit OS is available for installation D370-1066-0100-01.00.00.00.wim.

Computer Set up:

After restoring to the D370-1066-0100-01.00.00.00.wim image, the Microsoft Software License Terms will display and the user must read and accept the terms.

Please read the license terms

Last updated July 2016

MICROSOFT SOFTWARE LICENSE TERMS

WINDOWS 10 IOT ENTERPRISE & MOBILE (ALL EDITIONS)

IF YOU LIVE IN (OR IF YOUR PRINCIPAL PLACE OF BUSINESS IS IN) THE UNITED STATES, PLEASE READ THE BINDING ARBITRATION CLAUSE AND CLASS ACTION WAIVER IN SECTION 9. IT AFFECTS HOW DISPUTES ARE RESOLVED.

Thank you for choosing Microsoft!

Depending on how you obtained the Windows software, this is a license agreement between (i) you and the device manufacturer or software installer that distributes the software with your device; or (ii) you and Microsoft Corporation (or, based on where you live or if a business where your principal place of business is located, one of its affiliates) if you acquired the software from a retailer. Microsoft is the device manufacturer for devices produced by Microsoft or one of its affiliates, and Microsoft is the retailer if you acquired the software directly from Microsoft.

This agreement describes your rights and the conditions upon which you may use the Windows software. You should review the entire agreement, including any supplemental license terms that accompany the software and any linked terms, because all of the terms are important and together create this agreement that applies to you. You can review linked terms by pasting the (aka.ms/) link into a browser window.

By accepting this agreement or using the software, you agree to all of these terms, and

Accept License Terms Decline License Terms

If the computer name or workgroup name needs changed, in Control Panel, click System.
Click Advanced system settings.

Under the Computer name tab, domain and workgroup settings, click Change setting. If prompted for a reboot, accept and let the system reboot to update its settings.

Click Date and Time.

Select Change time zone adjust the time zone

Select Change date and time adjust date and time.

Uncheck Notify me when the clock changes

Return to the Control Panel.

Click Power Options.

Click the down arrow by the Show additional plans.

Click High Performance.

Optional – Default settings may cause the monitor to turn off after 15 minutes of inactivity. You can change this by going to Change Plan Setting and adjust display options.

Return to the main Control Panel.

Click Network and Sharing Center.

Click Change adaptor settings.

Right click the Local Area connection and click Properties.

Click the Configure button, verify/set that all options under Power Management are unchecked.

Click OK.

Right click the Local Area connection and click Properties.

Highlight Internet Protocol Version 4 and click Properties.

Fill in the IP address information.

Click OK.

Click Close.

Return to the Network and Sharing Center.

Click Change advanced sharing settings. Ensure that the option Turn on network discovery and Turn on file and printer sharing are turned on.

Scroll down and turn off Password protected sharing under All Networks.

Do this for both the Home or Work and Public sections.

Click Save changes.

Return to the Control Panel.

Click Display.

Click Change display settings on the left

Click Advanced display settings

Select 800 X 600 on all monitors.

Click Apply.

Click to keep changes

Go back to Settings

Disable Notifications
Go to Notifications & Actions
Set “Get Notifications from apps and other senders” to No

User Account Control settings
Click User Accounts
Click Change User Account Control settings
Slide bar to Never notify
Click Ok

NOTE: The Windows Update Service may need Enabled.
Search for Windows Updates in Settings.
Click Check for updates to Apply Windows updates
User may want to adjust Windows update options.
Click OK.
Return to the main Control Panel.

Windows 10 IoT should now be ready for software installation.

The XR7’s all-in-one touch screen design already has the Touch Driver installed however you need to download and install Touch Base Drivers UPDD_06_00_423 from the NCR support website. Copy the new driver to c:\Install\Drivers\Touch and double click to install/update touch driver.

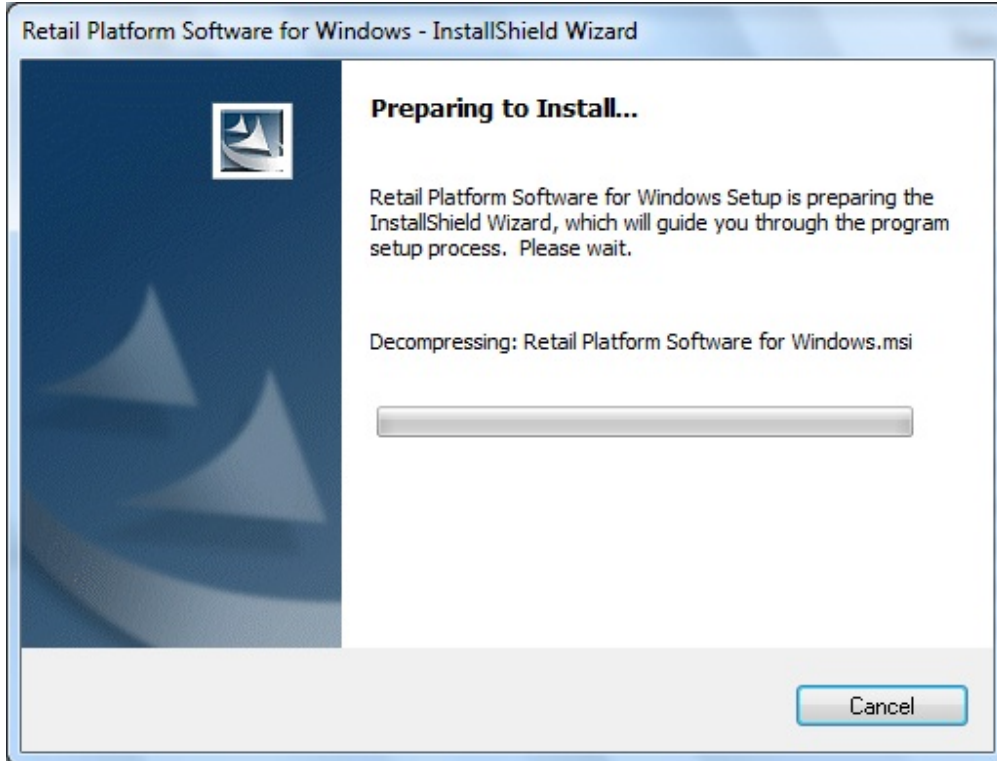
Install NCR Retail Platform Software for Windows (OPOS).

Obtain the Retail Platform Software for Windows version 5310.zip from the NCR Support website. Create the folder RPSW under C:\Install\Drivers and copy the install files to that folder. Along with any RPSW updates.

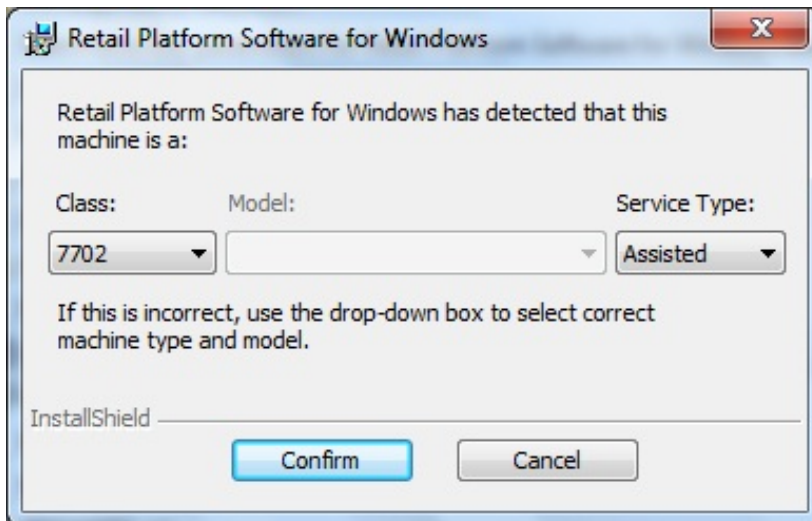
Download the V8NCROPOS.REG from the Retailix Channel Partner website and place in the RPSW folder as well.

Right Click the Retail Platform Software for Windows_5310.exe and Click Run as administrator.

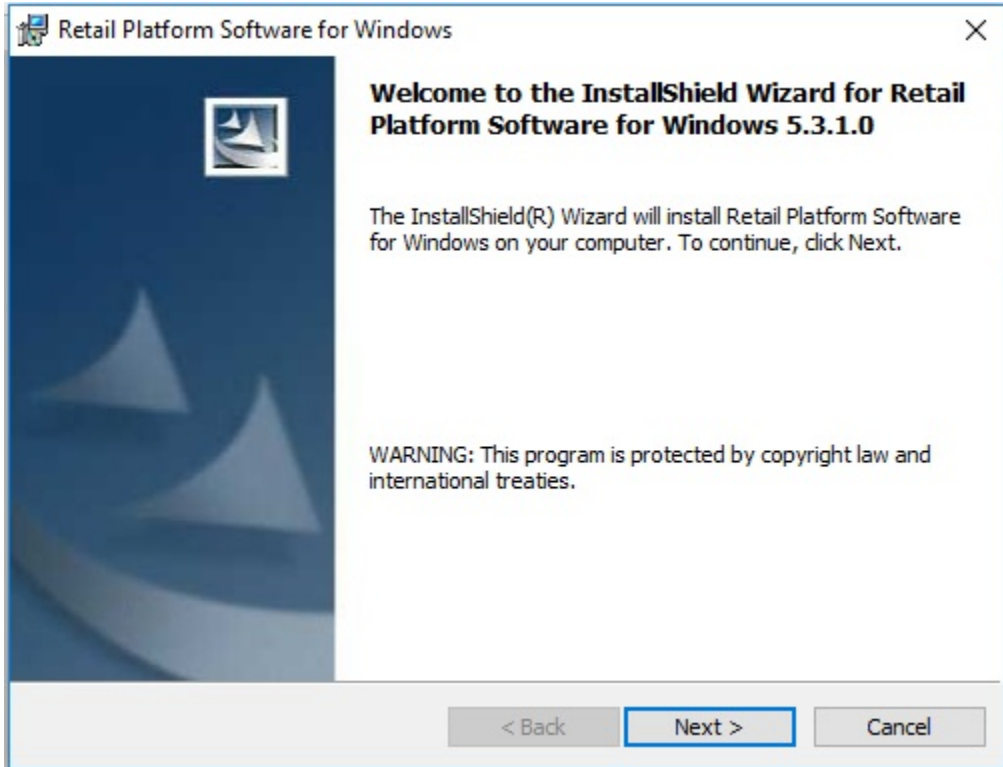
The installation starts.



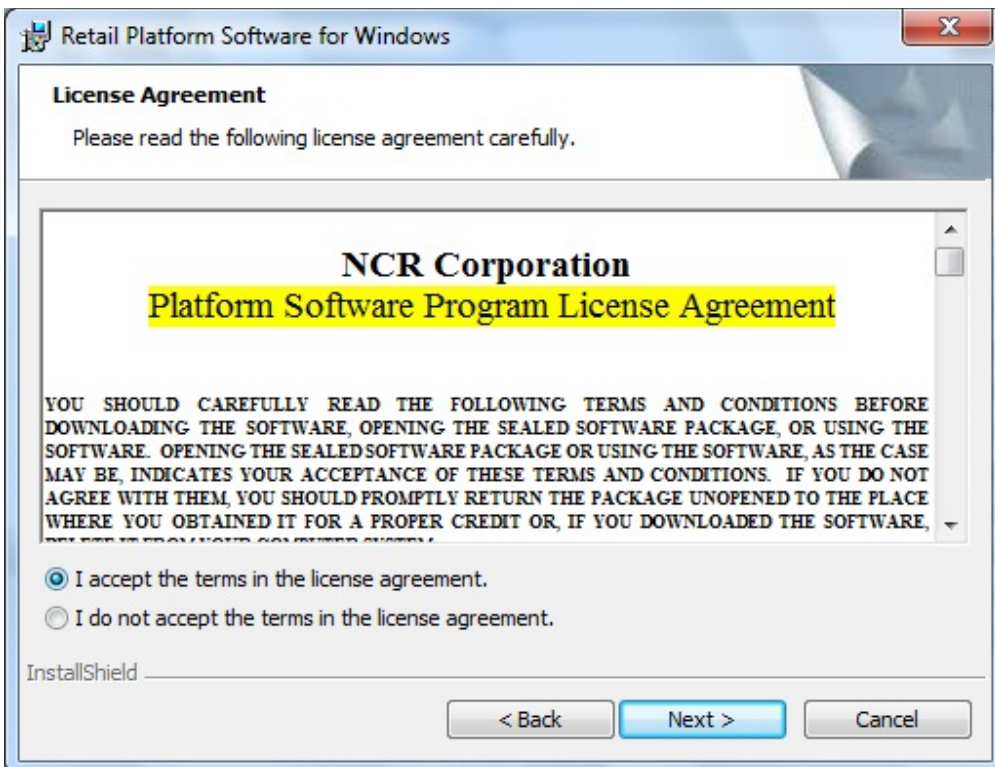
The machine type is detected. Click Confirm (don't change the other drop downs).



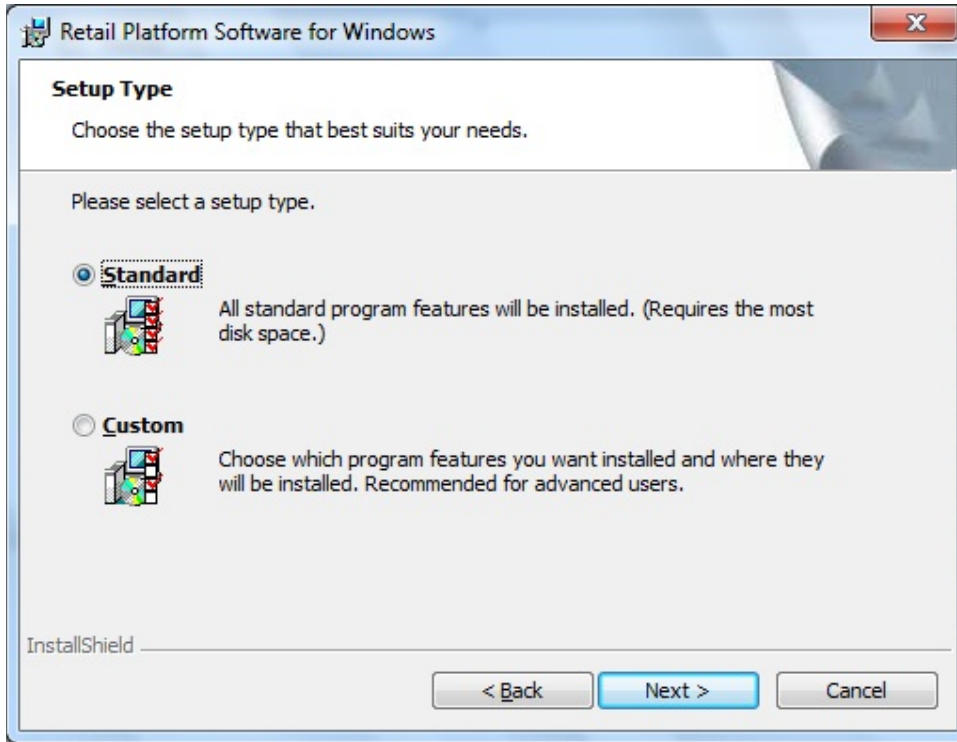
Click Next at the Welcome screen.



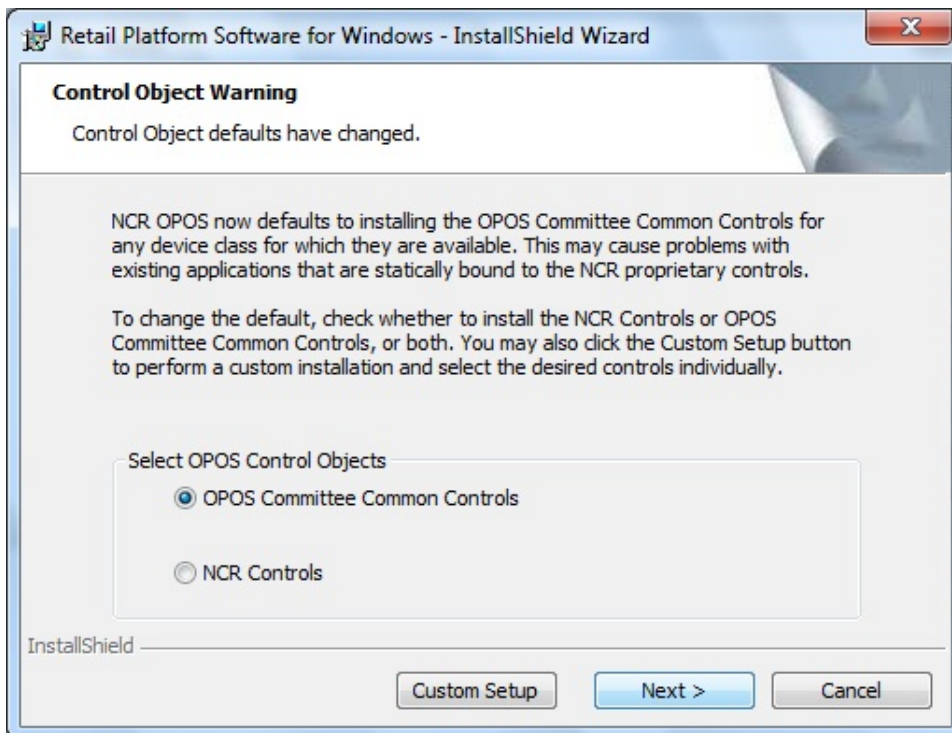
Click the I accept the terms box and click Next.



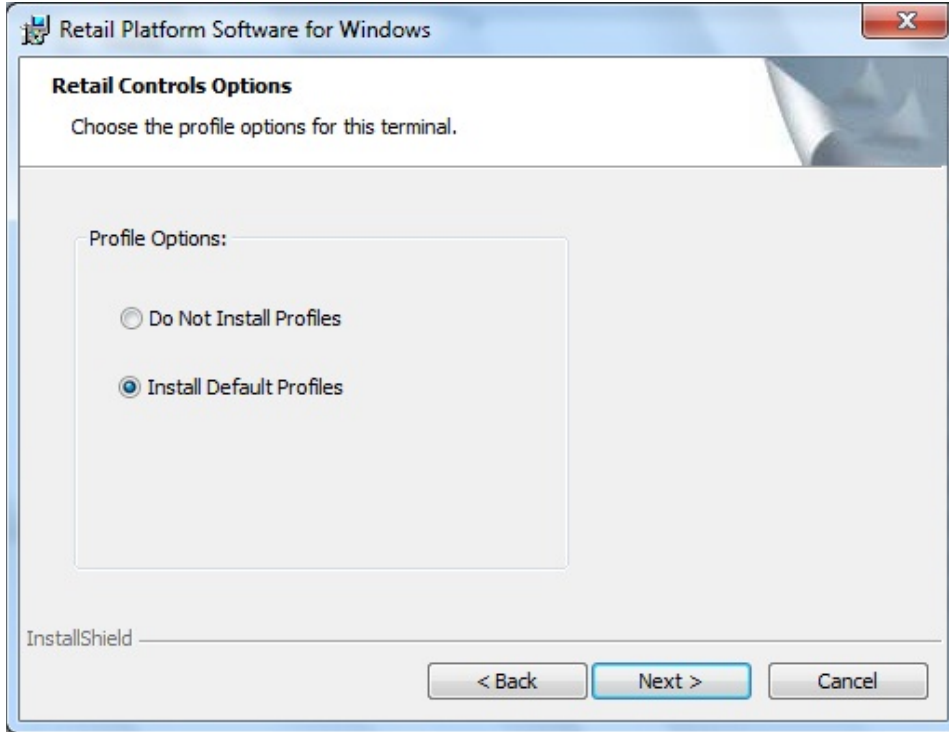
At the Setup Type screen select Standard and Click Next.



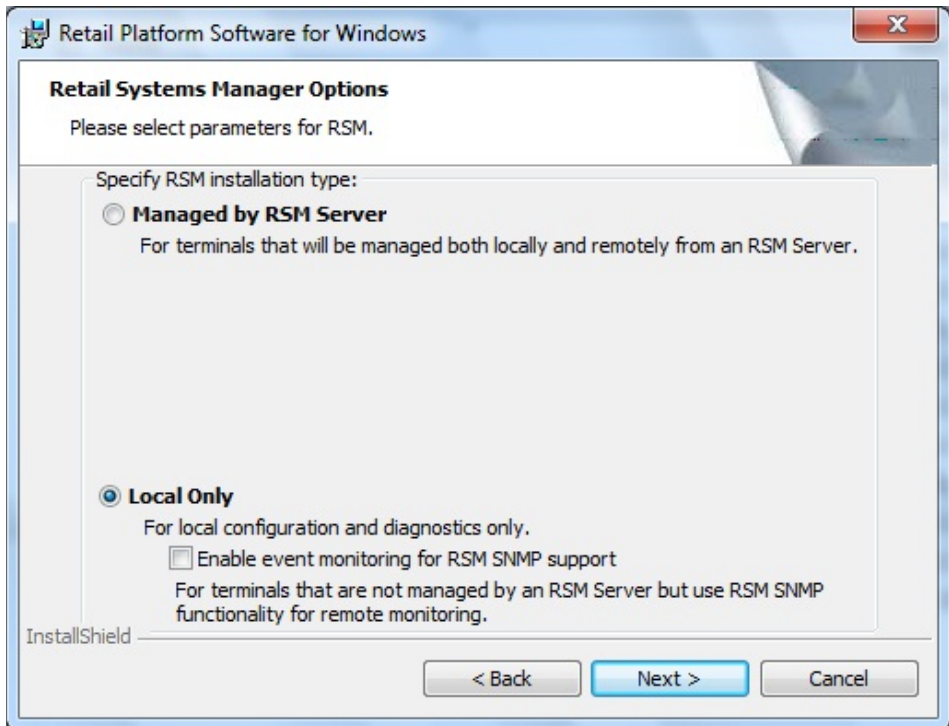
At the Control Object Warning screen select OPOS Committee Common Controls and click Next.



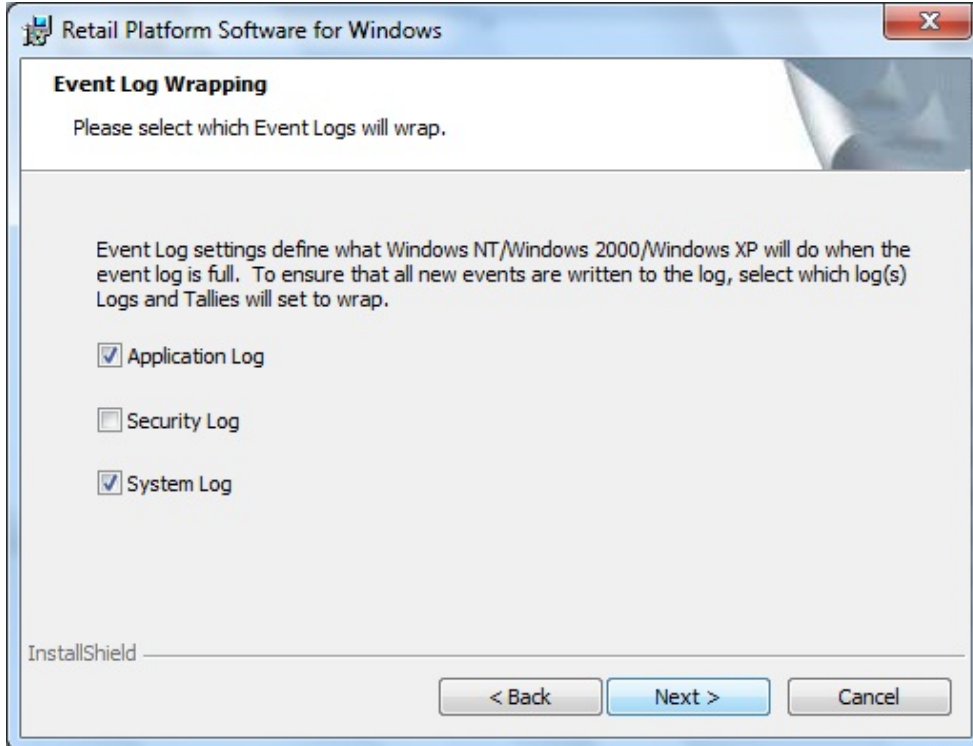
At the Retail Control Options screen select Install Default Profiles and click Next.



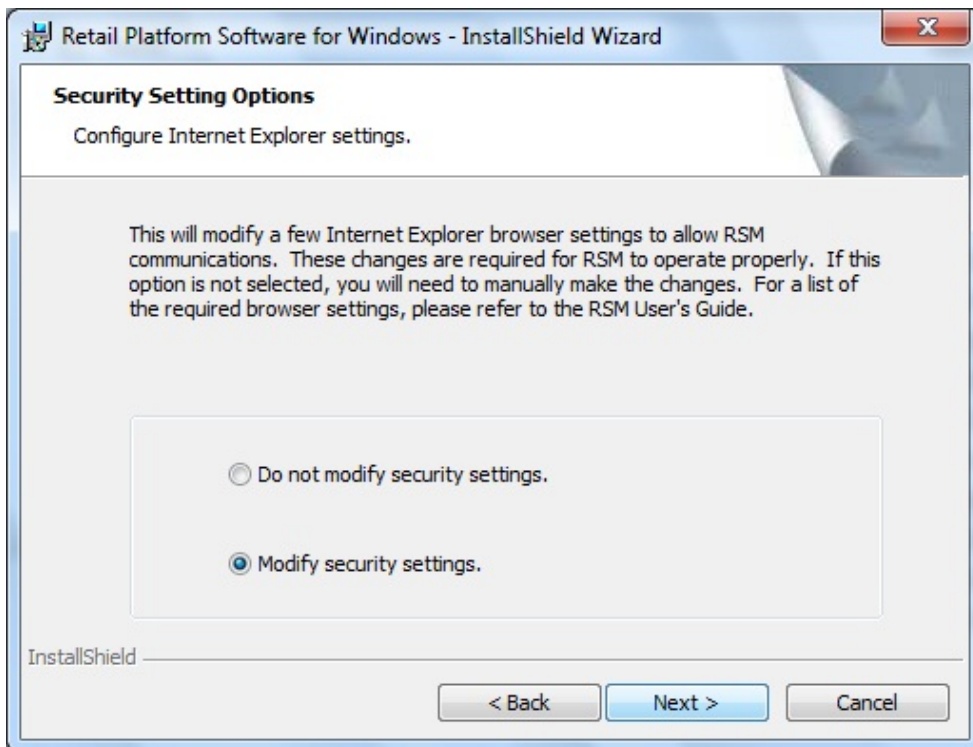
At the Retail Systems Manager Options screen select Local Only and click Next unless you are using a RSM server for remote management, in which case chose Managed by RSM Server and answer the additional questions on the screen.



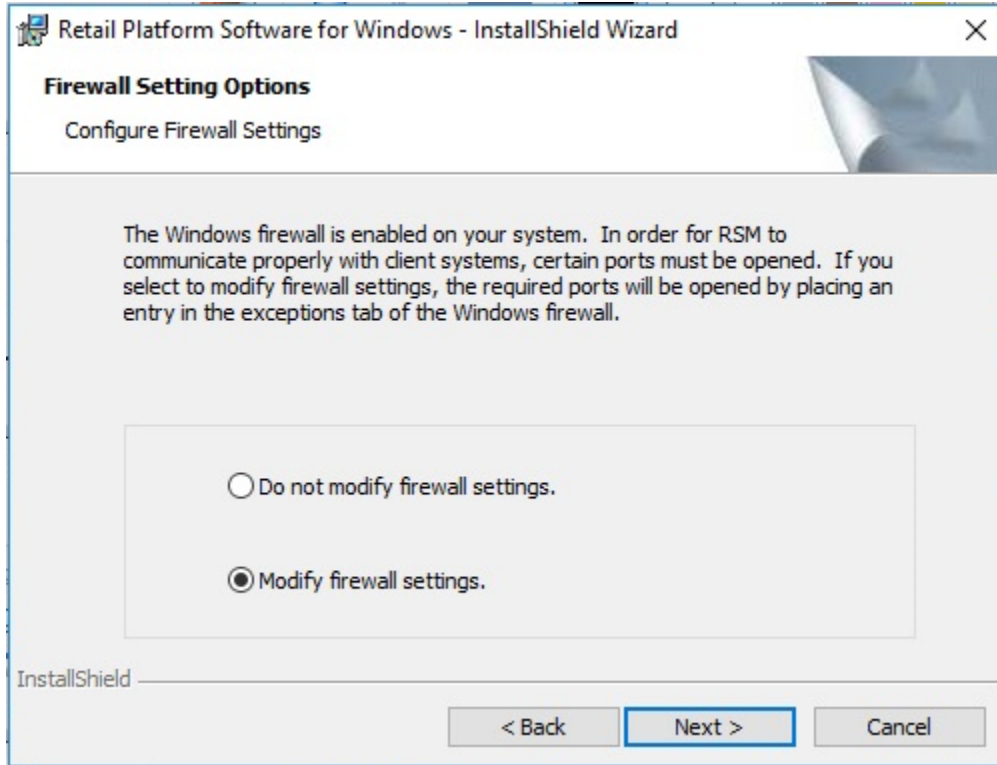
At the Event Log Wrapping screen click Next.



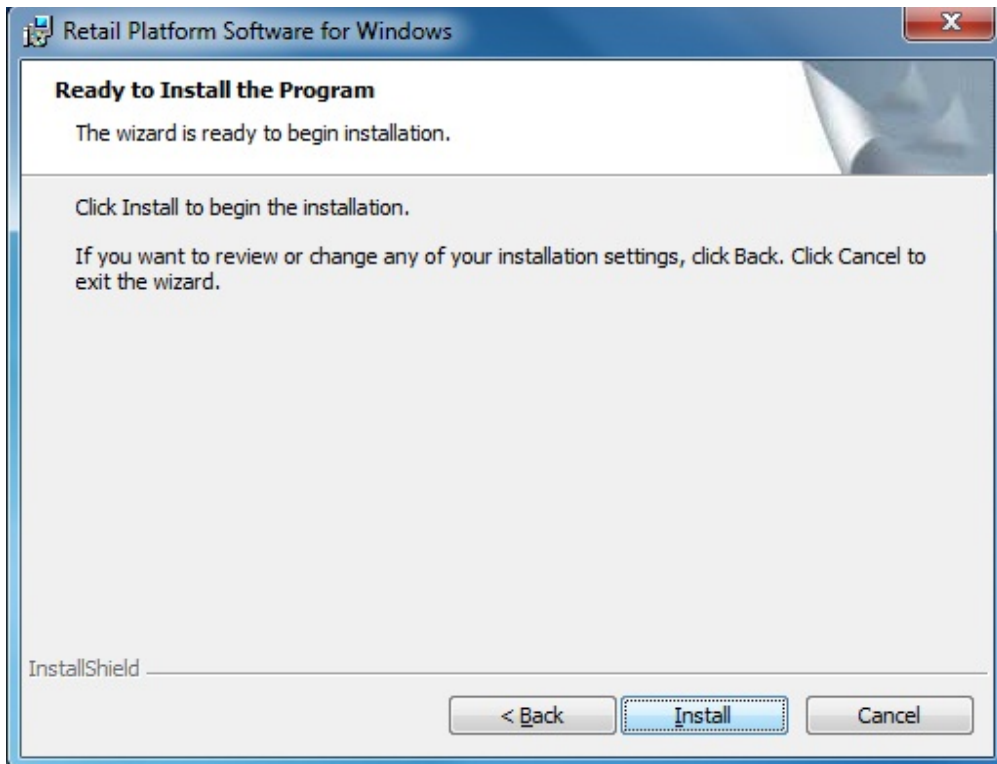
At the Security Setting Options screen select Modify security settings and click Next.



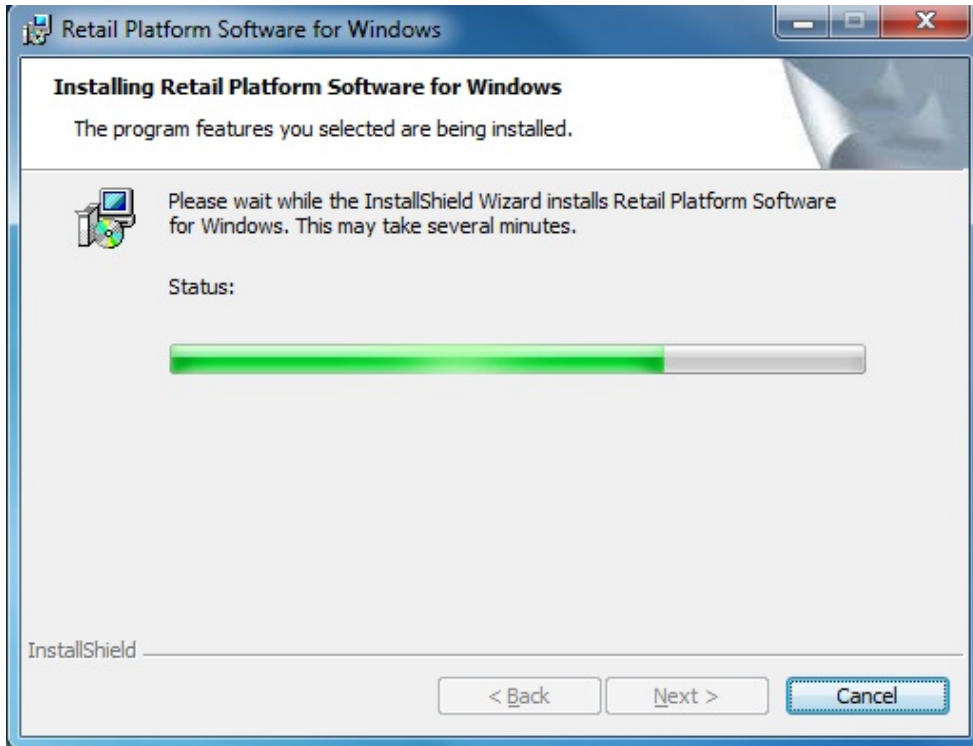
At the Firewall settings option select Modify Firewall Settings and click Next



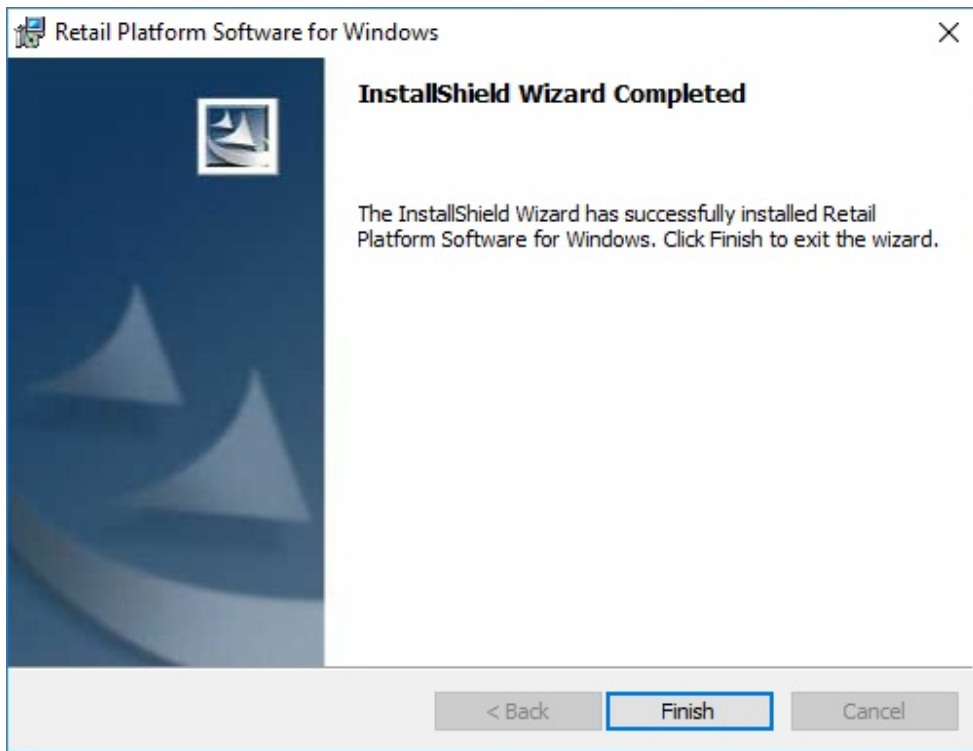
At the Ready to Install the Program screen click Install.



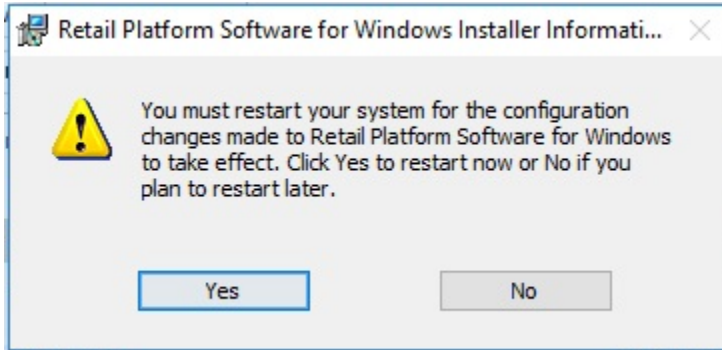
RSM is installed.



At the completed screen click Finish.



At the restart message box click Yes.



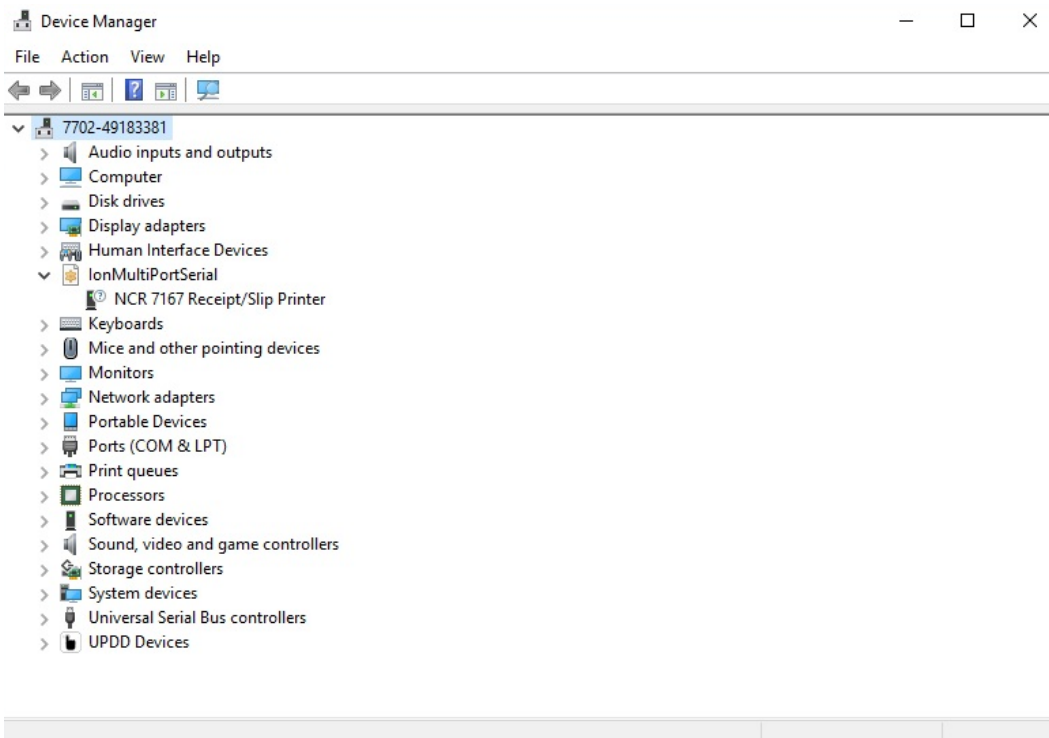
At this point attach the USB devices, i.e., POS printer, scanner. The Cash Drawer is to be plugged into the Cash Drawer port on the XR7 (7702) motherboard regardless of which printer is used.

Don't attempt to setup your devices at this point. That will be explained later in this document.

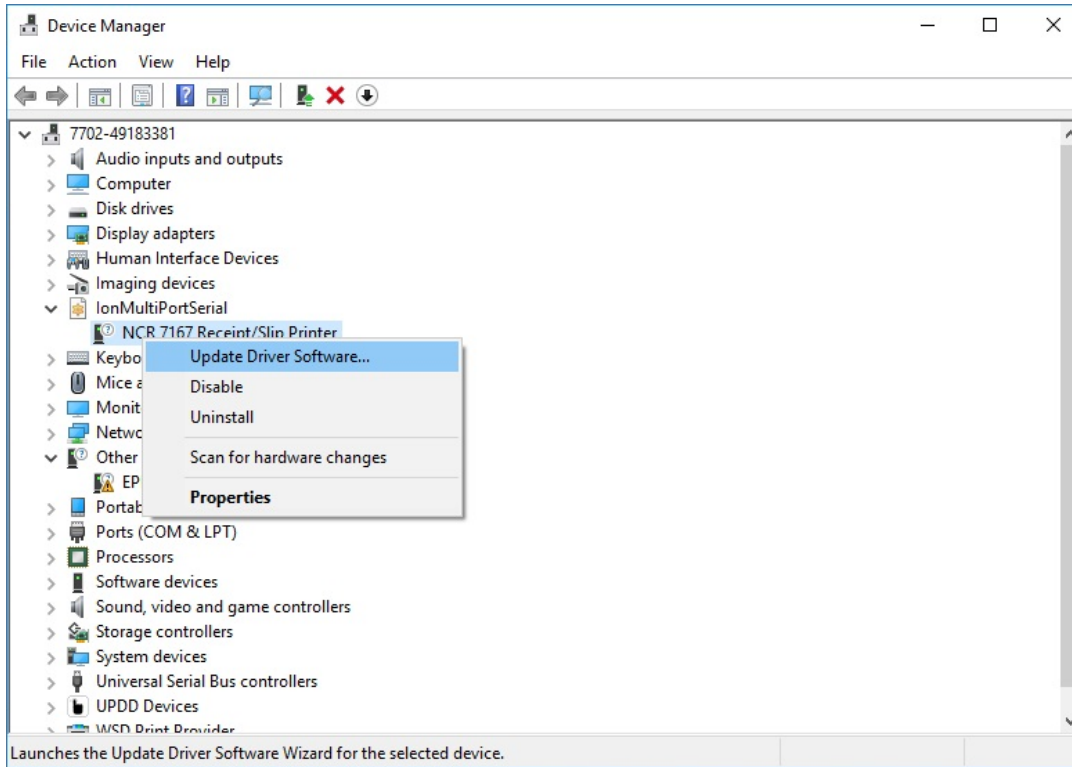
Installing NCR printer drivers (IONetworks). If you are using an Epson TM-6000III/IV USB printer, install the Epson OPOS and set up the printer via the Epson utility.

Click Start and go to the Control Panel. Click Device Manager.

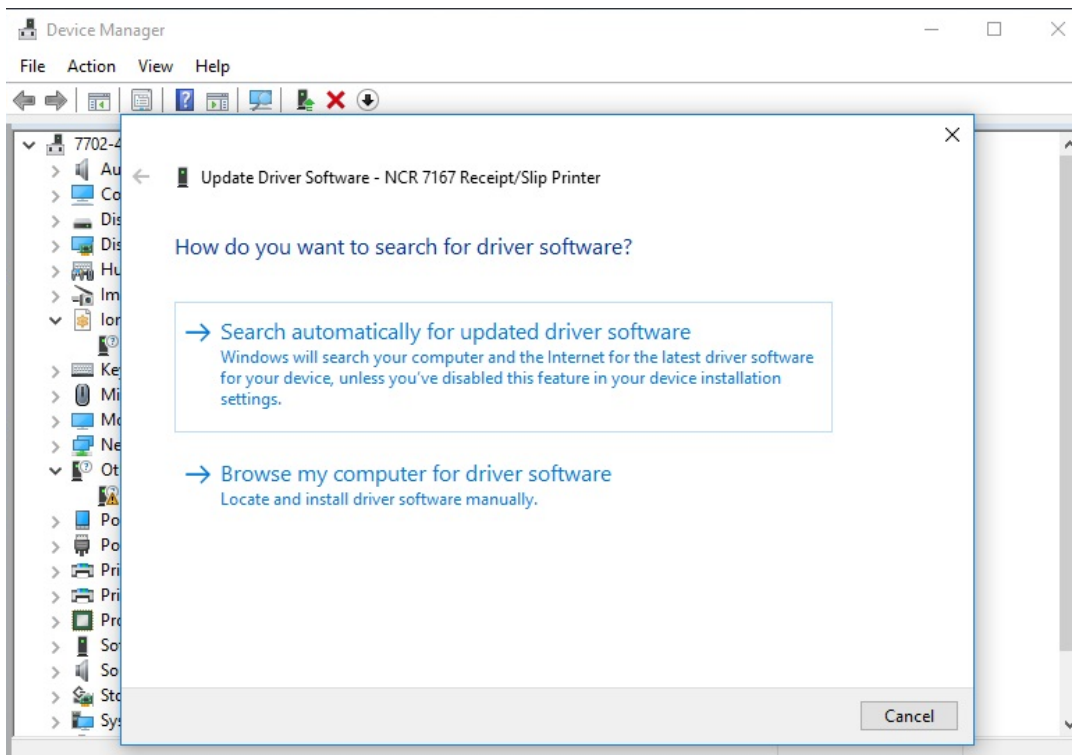
The NCR Printer will be detected under the IonMultiPortSerial in Device Manager



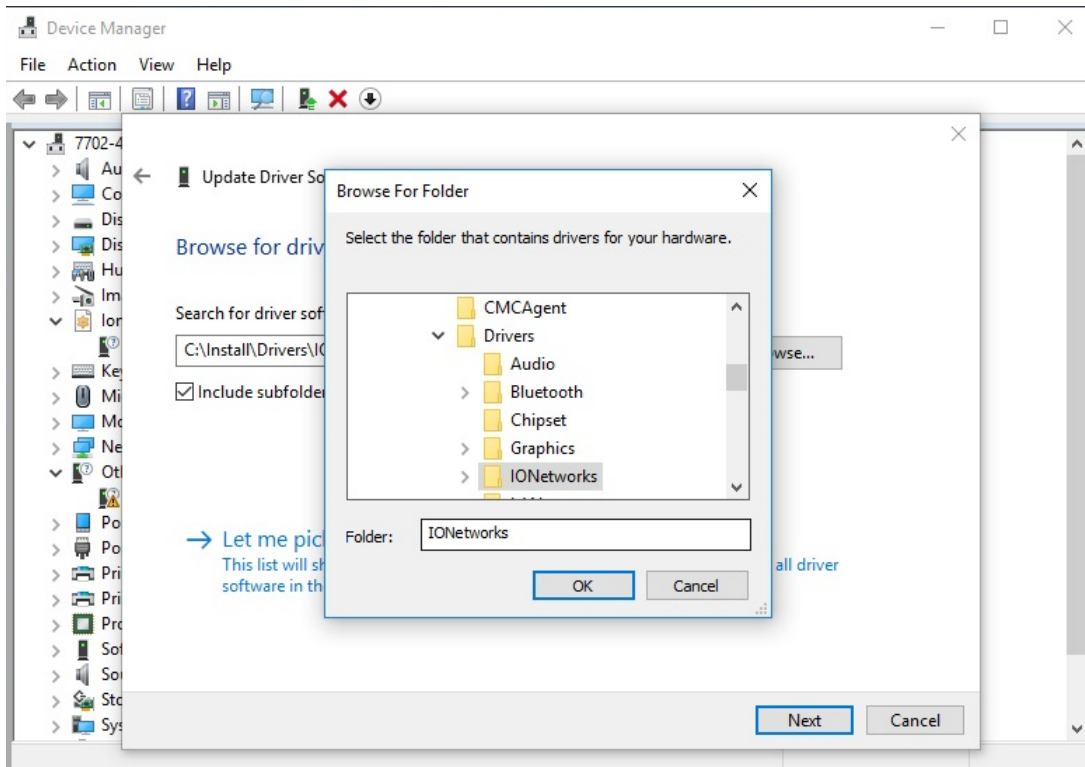
Right Click the NCR 7167 Receipt/Slip Printer



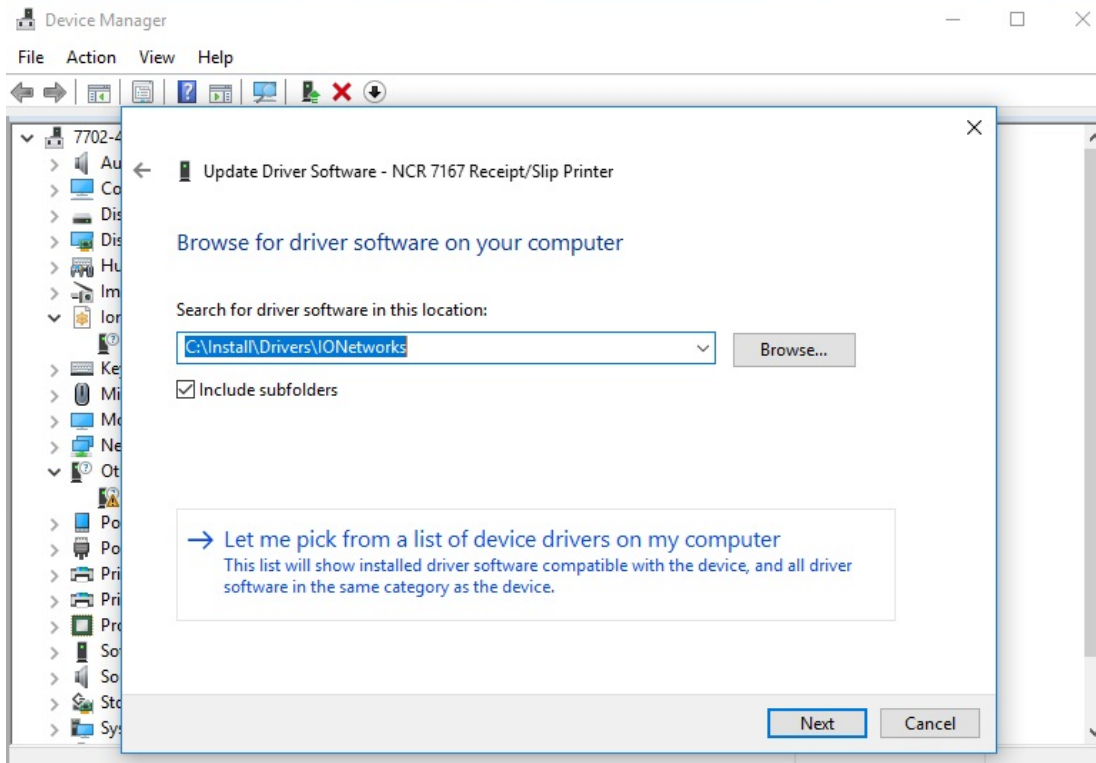
Click **Browse my computer for driver software**



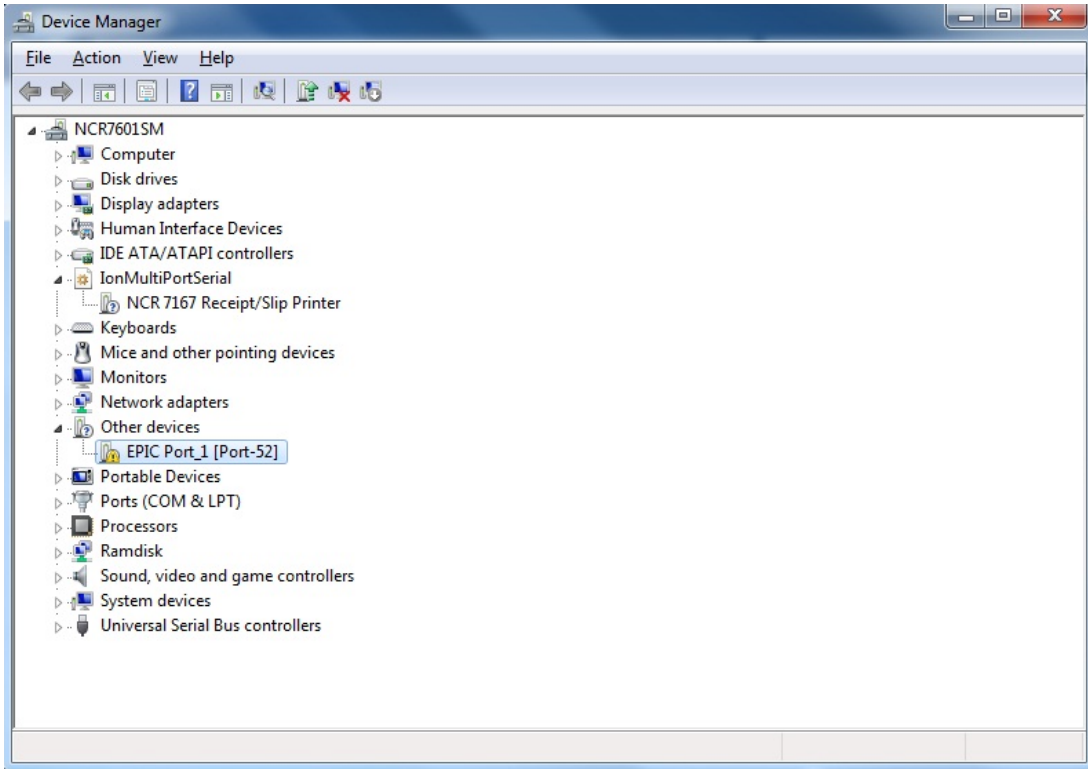
Browse to C:\Install\Drivers\IONetworks and click **OK**.



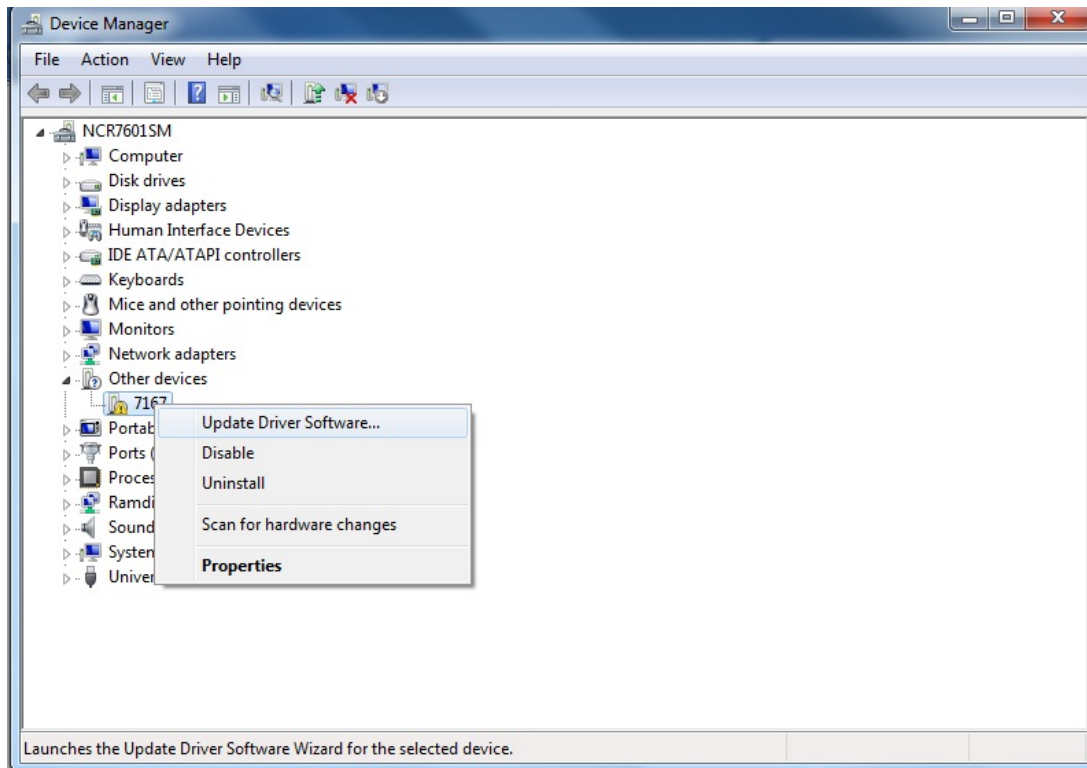
Click **Next** at the following screen



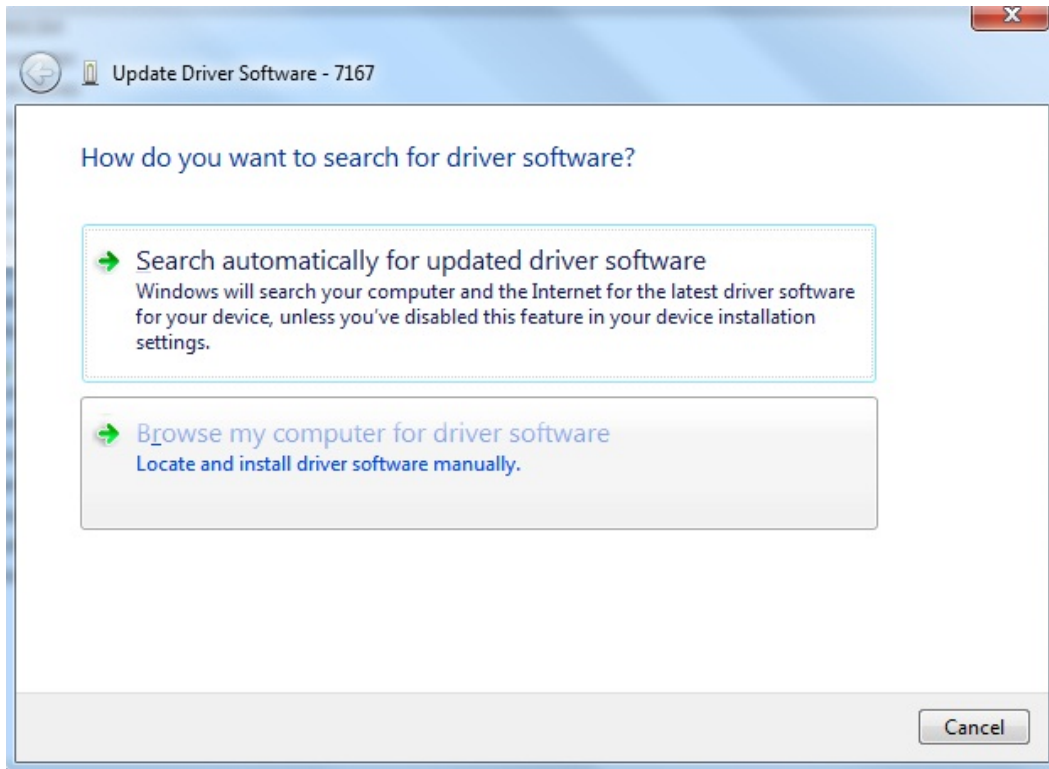
If the EPIC Port_1(Port-52) under Other Devices displays the yellow exclamation



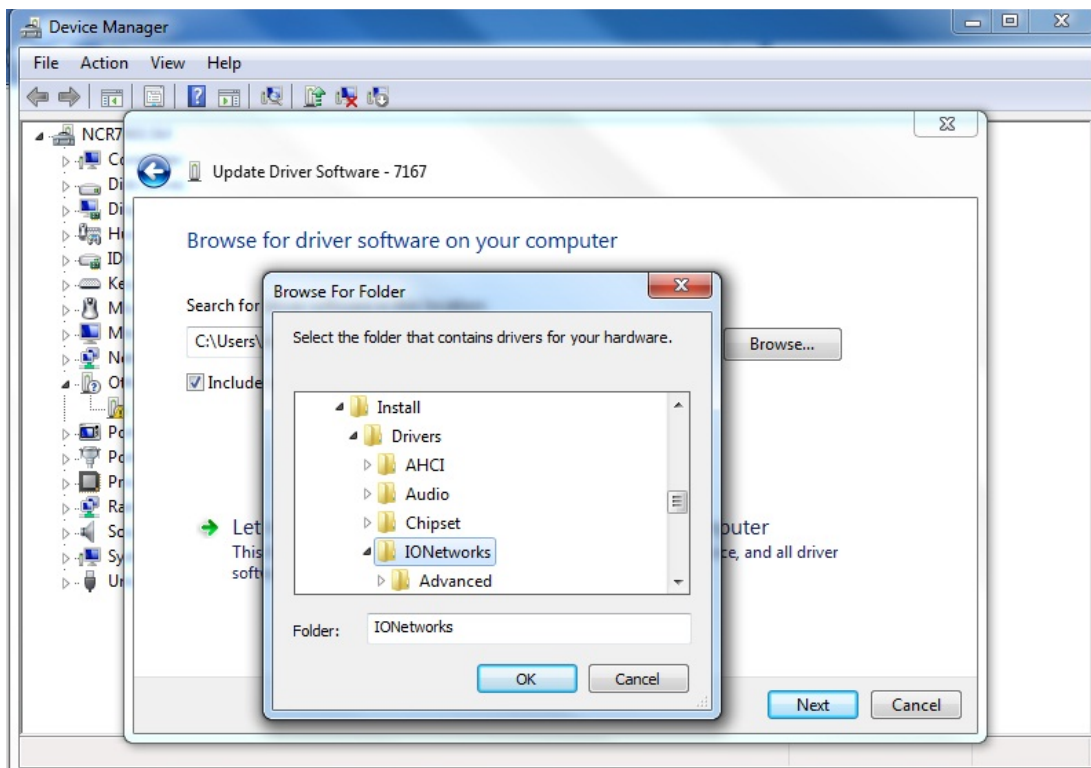
Right Click the Device and select **Update Driver Software**



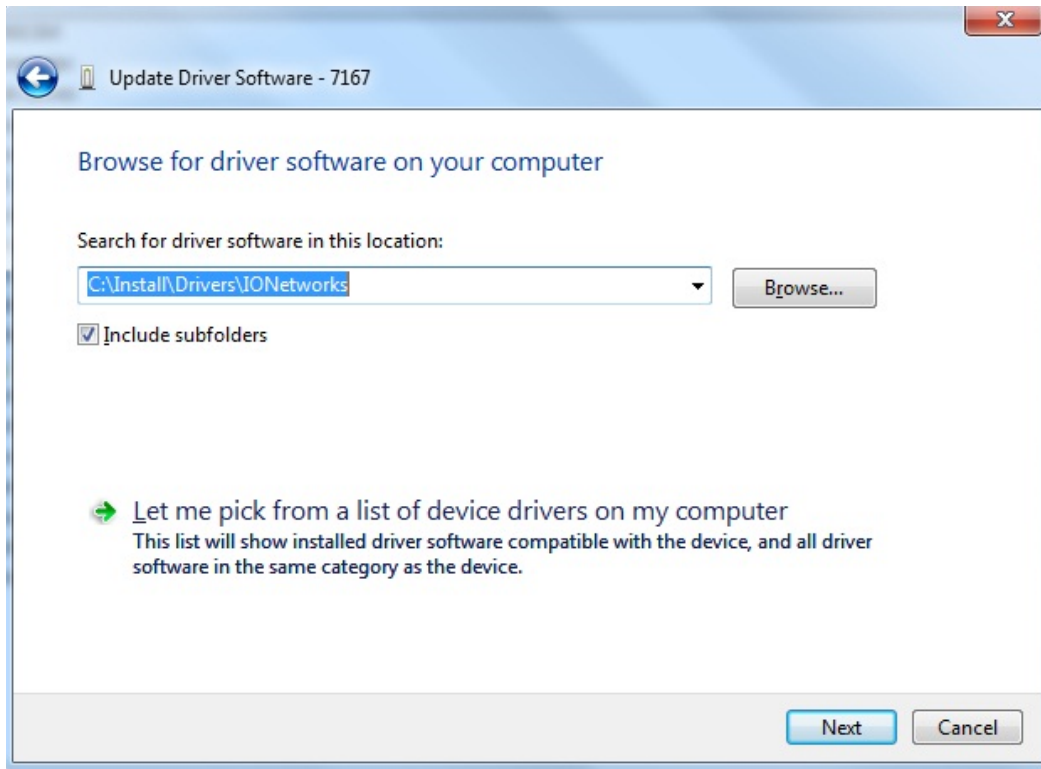
Click **Browse my computer for driver software**.



Browse to C:\Install\Drivers\IONetworks and click **OK**.



Click **Next** at the following screen.



Click Close to complete the process.

Close Device Manager and Control Panel.

From the C:\Install\Drivers\RPSW folder on the POS and double click V8NCROPOS.reg
This will install the Device Profiles

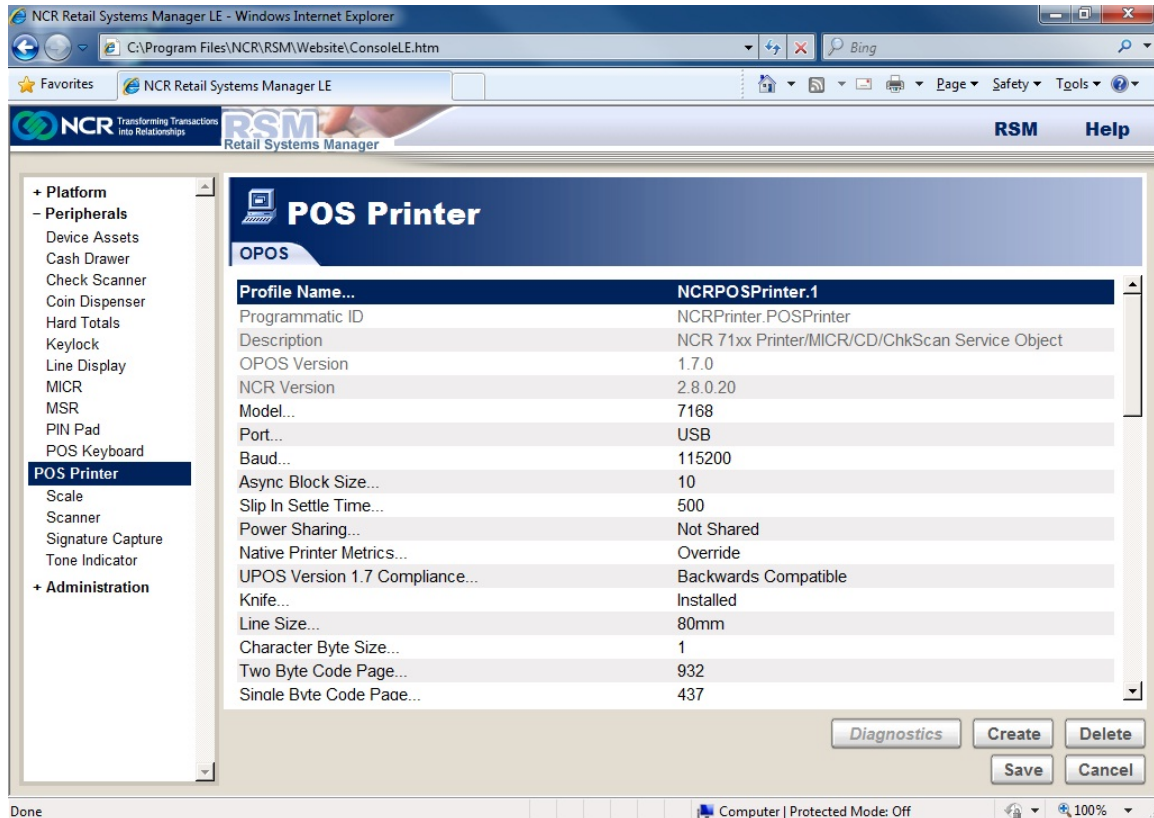
NOTE: If you ever uninstall NCR RSM(OPOS) and reinstall it will be necessary to go to the C:\Install\Drivers\RPSW folder on the POS and double click V8NCROPOS.reg to reinstall the correct Device Profiles. The Device settings will also need redone to match the attached devices.

The following devices profiles were installed by the V8NCROPOS.REG file:
NCRCashDrawer.1, NCRMICR.1, NCRPOSPrinter.1, NCRScale.7872,
NCRScanner.7872 and NCRToneIndicator.1. Other profiles were installed via the RSM
install but only those listed above are currently supported by ENCOR. Changing to other
profiles will cause device failures in ENCOR.

Some of the above profiles should work as is, however, some profiles such as
NCRPOSPrinter.1, NCRScale.7872 and NCRScanner.7872 may need changed depending
on which printer or scanner/scale is attached to the POS. It is not the intention of this
document to document how to use the RSM LE setup. Information on this can be found

on the NCR website. That said, the device setup is fairly straight forward and the following screen provides an example on device setup.

Run RSM LE and configure your devices.



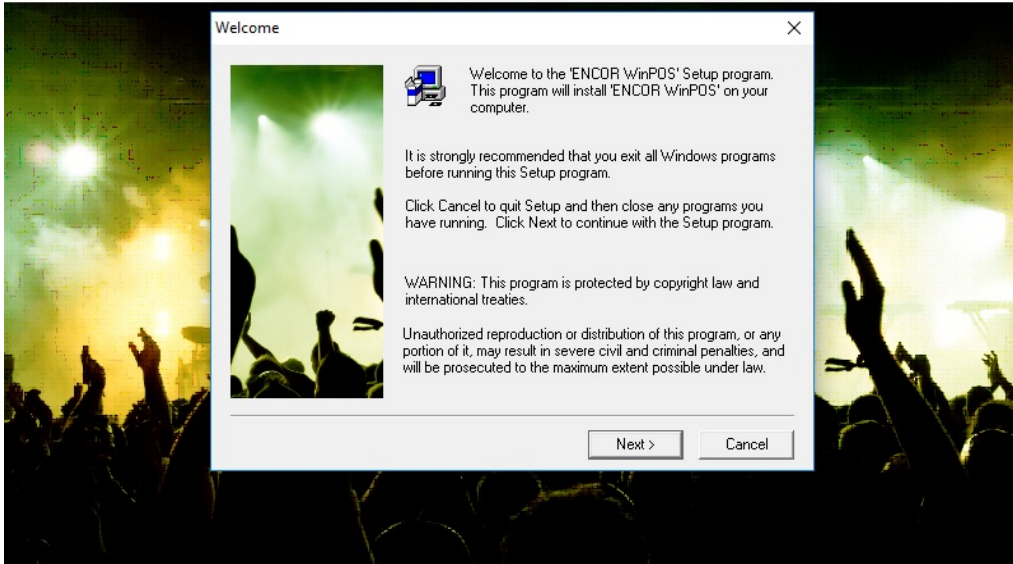
Once you have chosen the correct profile (see choices above), you normally will only have to choose the correct Model number of your device. Always select USB as your Port. For the 7168 printer, there are some additional settings to choose single or double sided printing. If you want double sided printing go to the Two Sided Thermal Mode Option and select Double sided Automatic Split Receipt. (This requires special printer paper).

Now that the OS, network and device drivers are installed and configured, run the ENCORA POS is ready to install. See the Install guide on the website.

Use the following corresponding screens when doing the install.

At the Welcome Screen Click **Next**

ENCOR WinPOS Installation
Version: 1.0.1.3

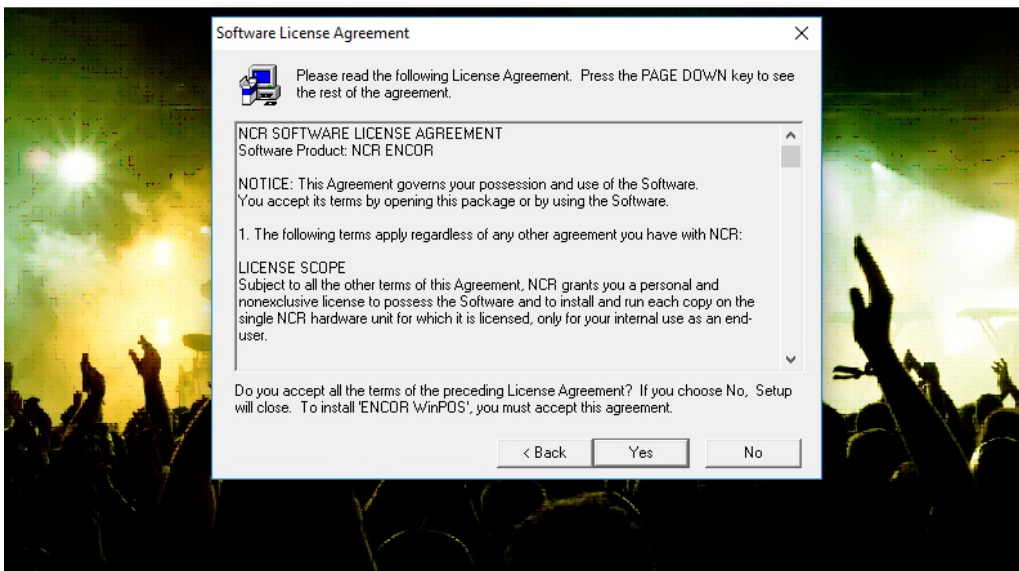


© 2017 NCR
All Rights Reserved
ENCOR is a trademark of NCR

commerce made complete

Accept the Software License Agreement by selecting **Yes**

ENCOR WinPOS Installation
Version: 1.0.1.3



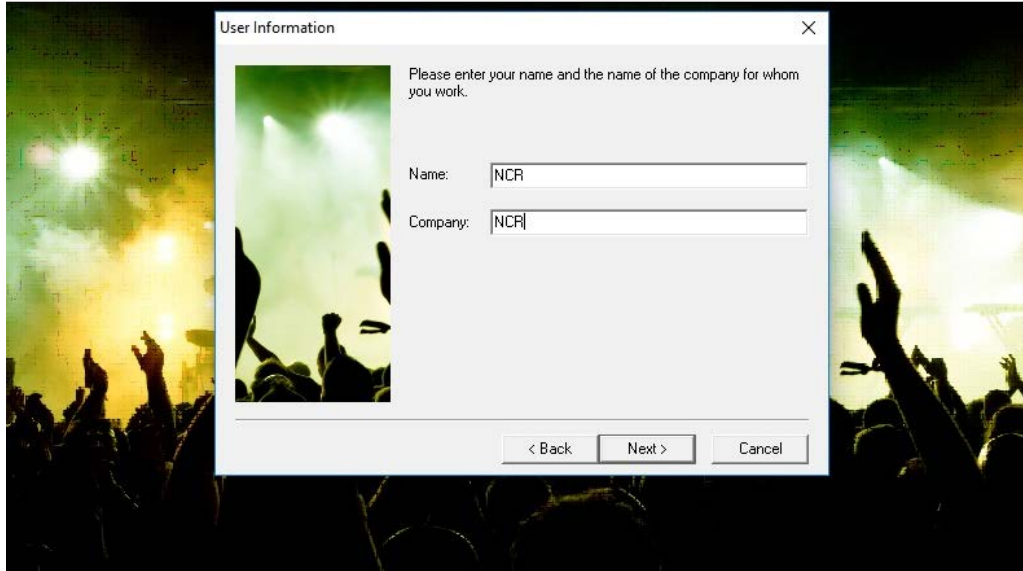
© 2017 NCR
All Rights Reserved
ENCOR is a trademark of NCR

commerce made complete

E

Enter the User Information

ENCOR WinPOS Installation
Version: 1.0.1.3



© 2017 NCR
All Rights Reserved
ENCOR is a trademark of NCR

commerce made complete

Confirm the Registration by selecting **Yes**

ENCOR WinPOS Installation
Version: 1.0.1.3

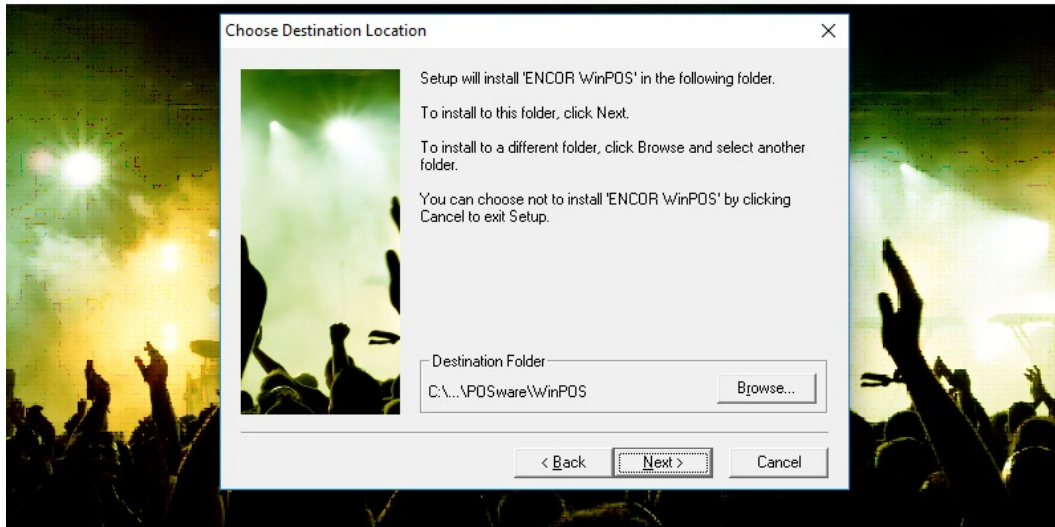


© 2017 NCR
All Rights Reserved
ENCOR is a trademark of NCR

commerce made complete

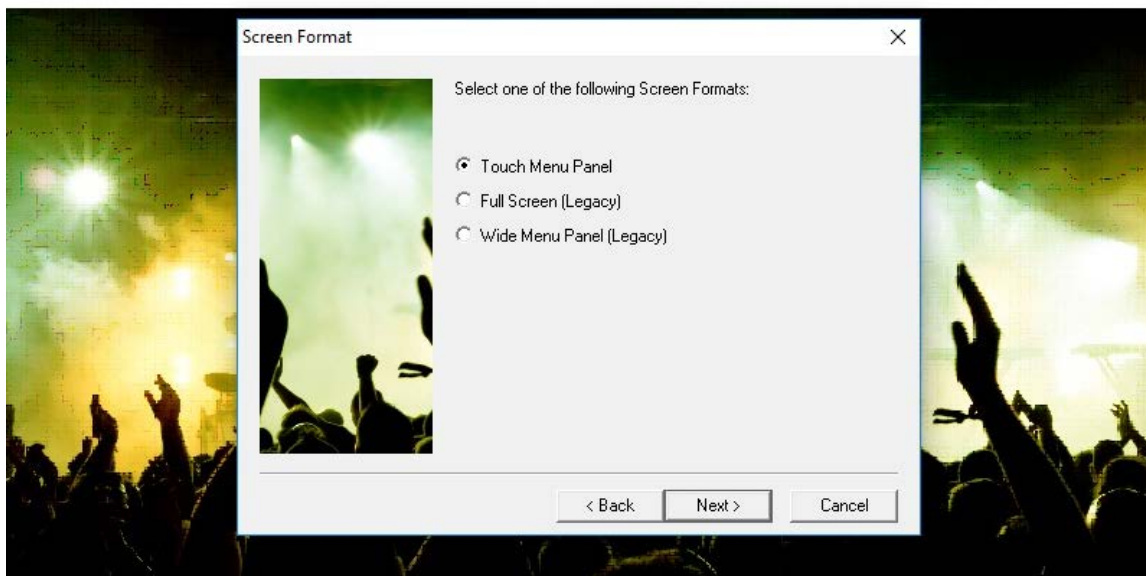
Select **Next** to Choose Destination Location

ENCOR WinPOS Installation
Version: 1.0.1.3



Select **Touch Menu Panel** and click **Next**

ENCOR WinPOS Installation
Version: 1.0.1.3



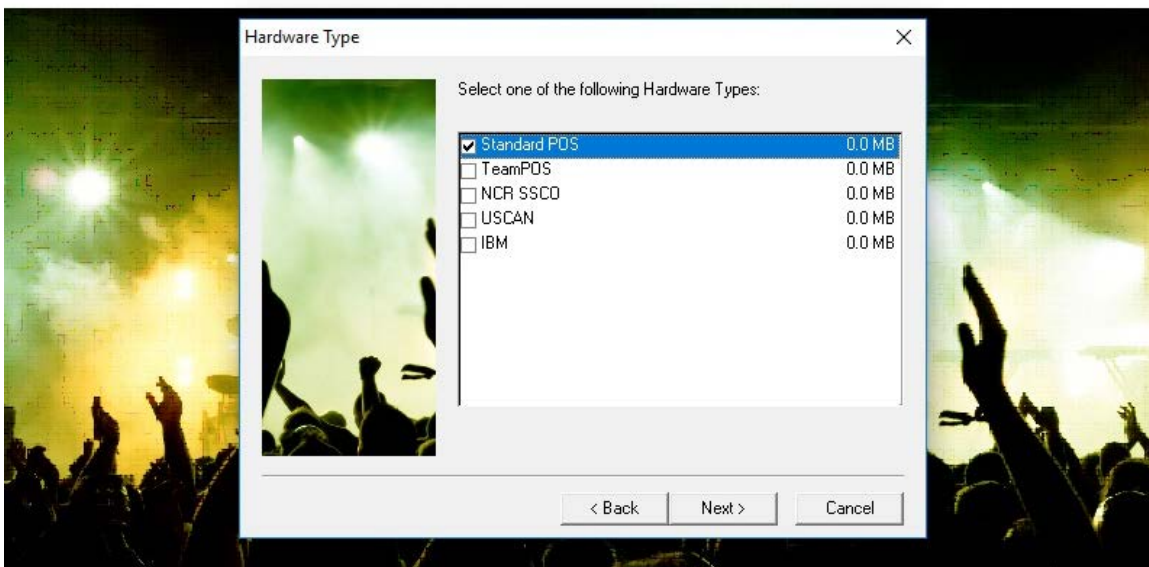
If using dual monitors select Dual Screen. If not Select Single Screen

ENCOR WinPOS Installation
Version: 1.0.1.3



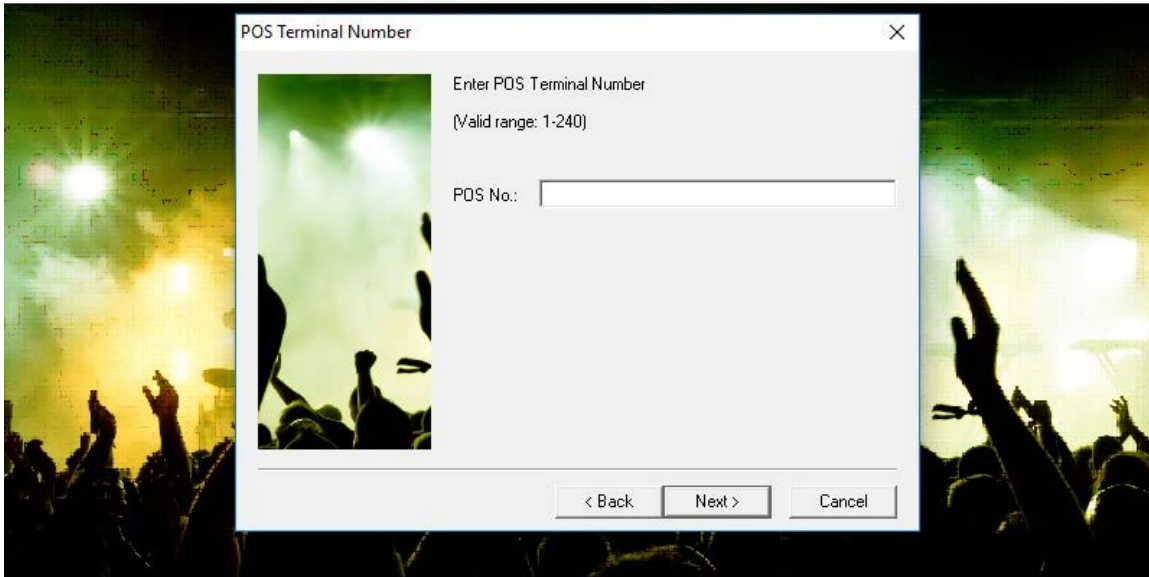
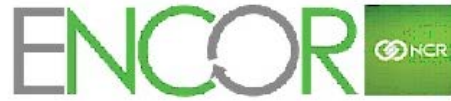
Under Hardware Type select **Standard POS**.

ENCOR WinPOS Installation
Version: 1.0.1.3



Enter the POS No:

ENCOR WinPOS Installation
Version: 1.0.1.3



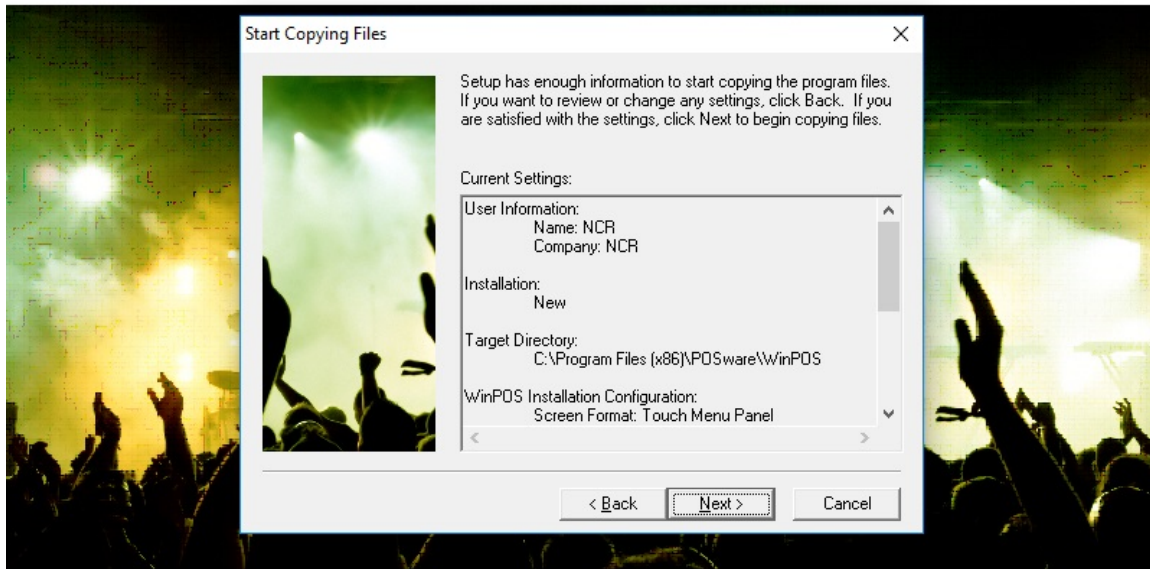
Select **Ignore** at the Use Auto Logon prompt

ENCOR WinPOS Installation
Version: 1.0.1.3

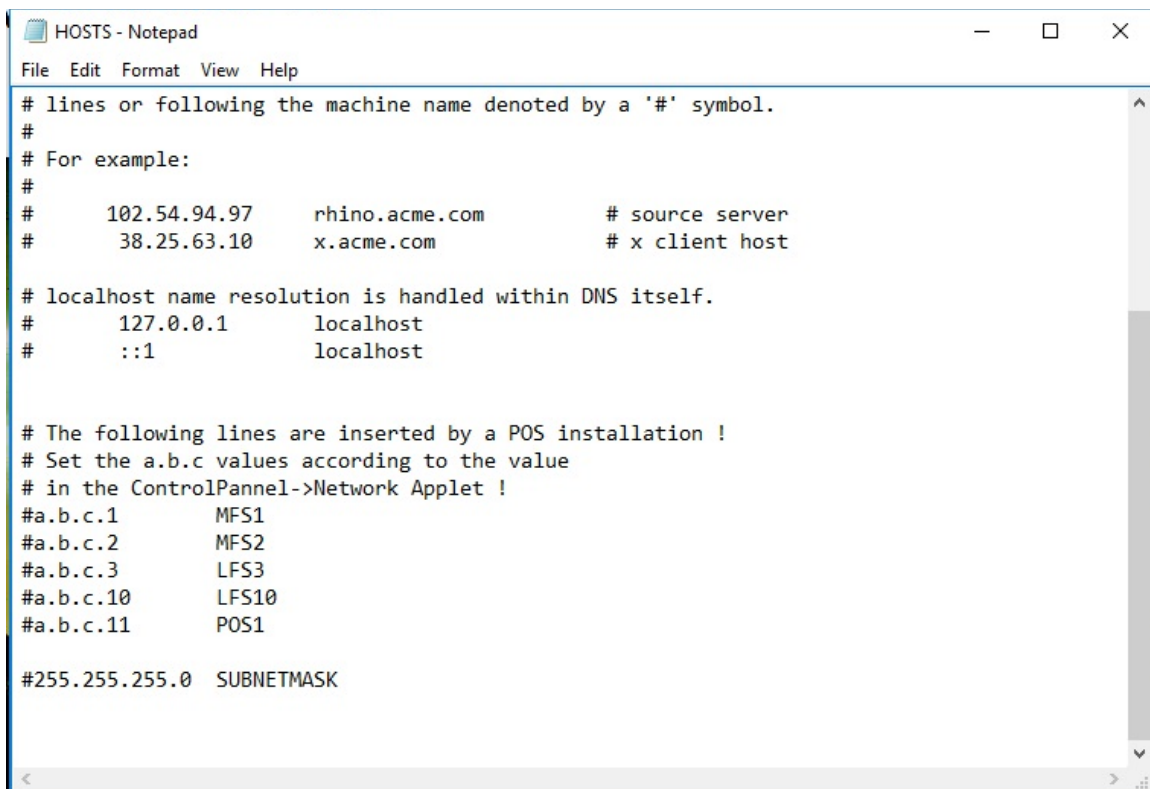


Select **Next** to Start Copying Files

ENCOR WinPOS Installation
Version: 1.0.1.3

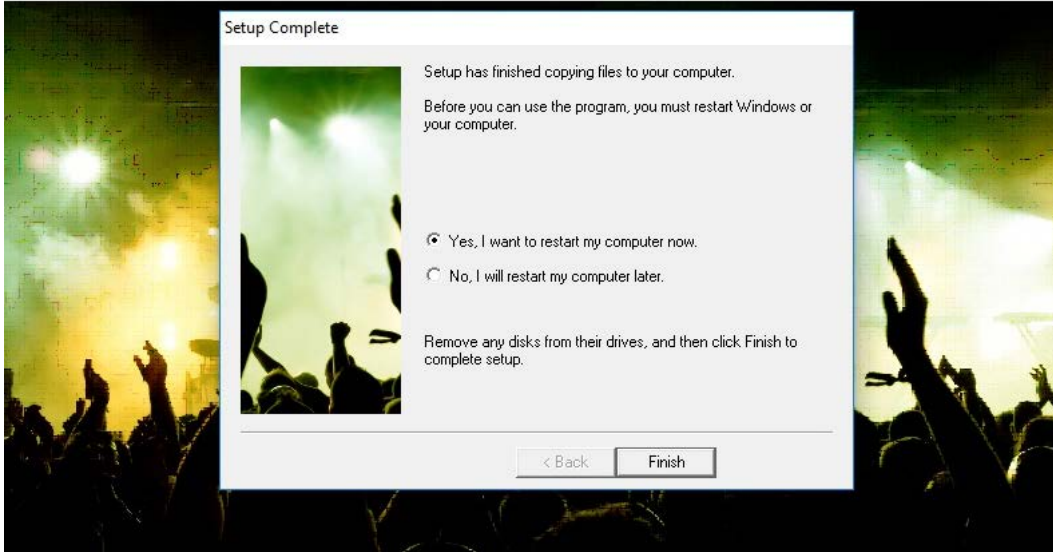
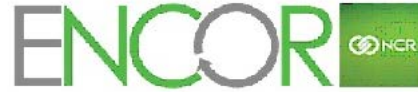


Edit the Host file

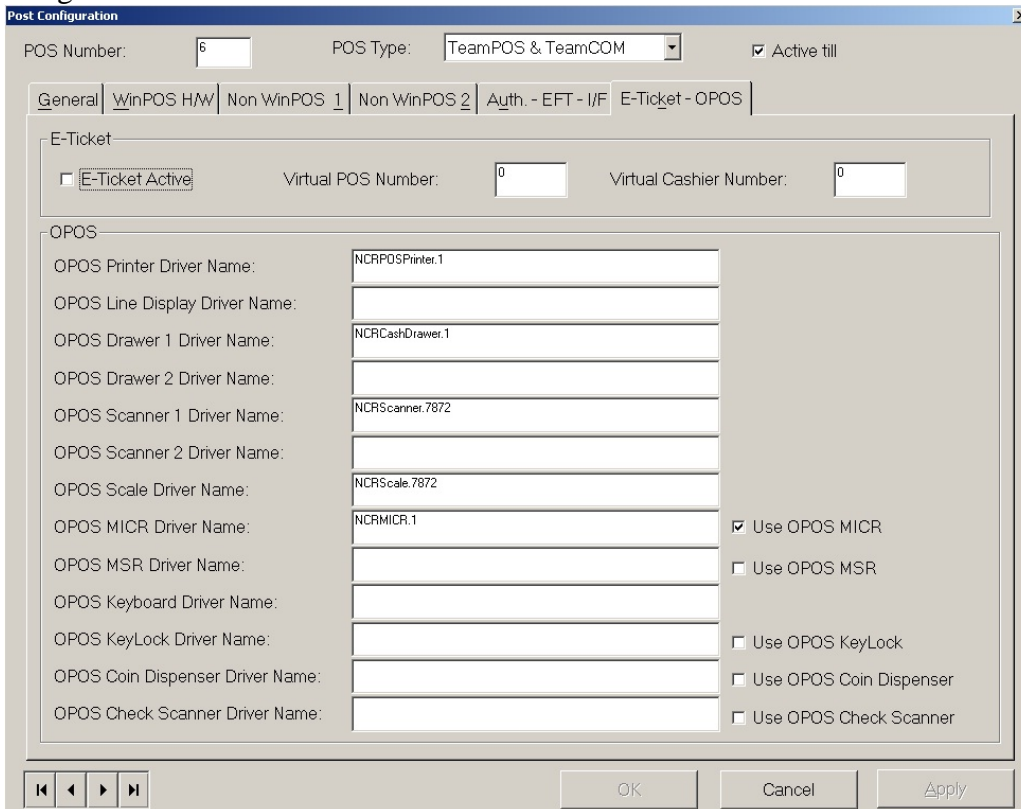


Select **Finish** to complete the install

ENCOR WinPOS Installation
Version: 1.0.1.3



Depending on the installed devices, setup the following OPOS devices in the FrontOffice POS Configuration. If using the Epson TM-H6000IIIU/IVU then install the Epson OPOS using the ADK268E.exe and set it to be TM-H6000IIIU for the Printer and the MICR:



At this time, Connected Payments can be installed.

Note: Due to the reduction of the Administrator Privileges, the OpenEPS folder may be populating in the following directory:

C:\Users\NCR\AppData\Local\VirtualStore\Program Files\MicroTrax\OpenEPS

Additional setup information:

Adding Users to proper Windows Groups (admin user rights required)

- Navigate to Computer Management (Control Panel > Administrative Tools).
- Under Local Users and Groups, Select Users.
- Double click a user to display the User's Properties.
- In the Member Of tab, please make sure all users that are not assigned to the Administrators group are added to the ENCORUSERS group.
- Click Ok.

NOTE: For more secure system

At this time a Non-Admin user can be created

For security reasons, you may want to delete the NCR users.

Printers – set or build appropriate templates for check writing.

Menusys.mac and Keyboard programming – It is up to the Dealers to setup the menusys.mac and keyboard programming to meet the customer's requirements.

Following are the scan tags and sequences to program the 78xx scanners. Once the OPOS devices are setup and programmed the POS should be ready for use.

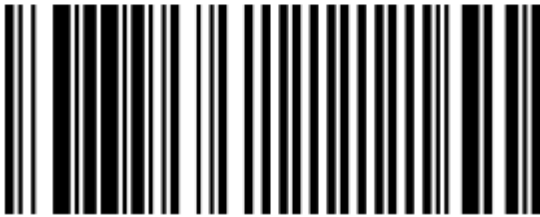
78XX Scanner programming tags:
To Program the 7874 / 7878 for ENCOR

(Start)

Reset



Default

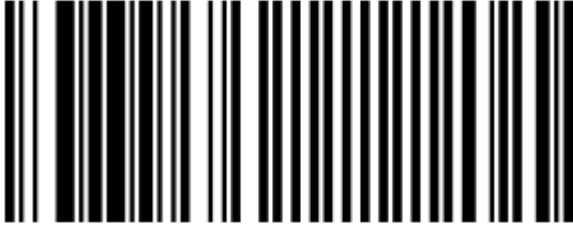


Programming Mode

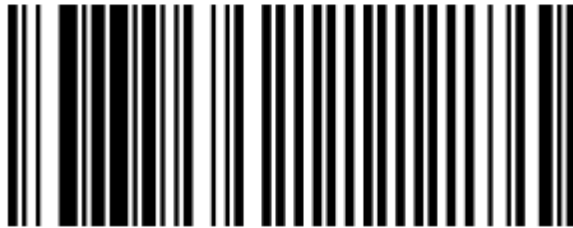


(Set to USB Communication Protocol)

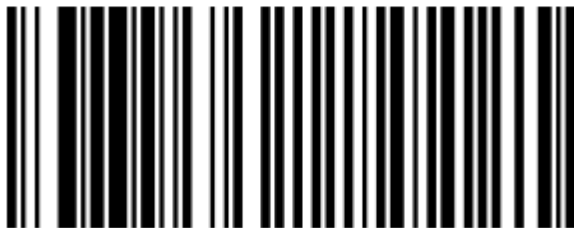
Hex 1



Hex 0

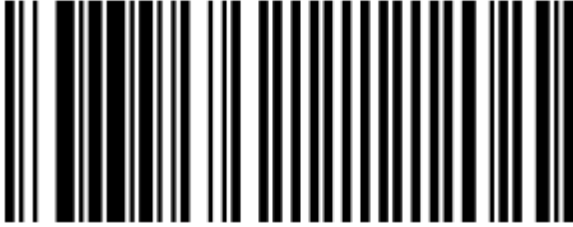


Hex D

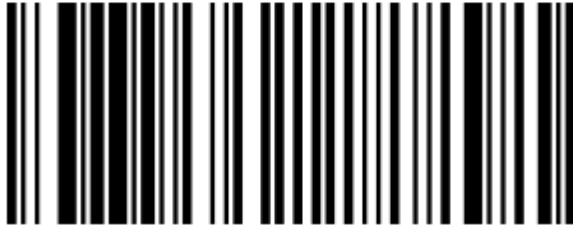


(Enable periodical codes)

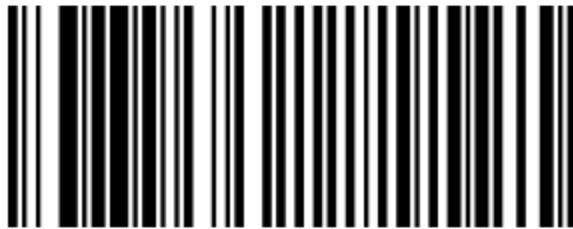
Hex 1



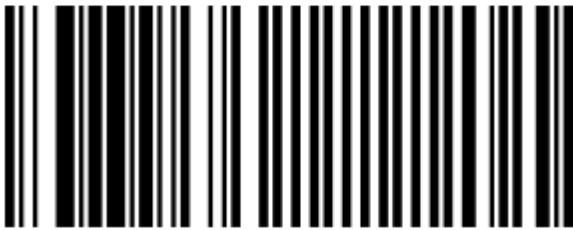
Hex 3



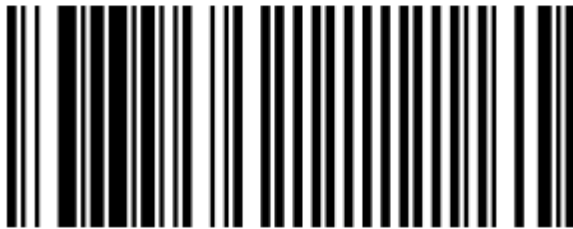
Hex E



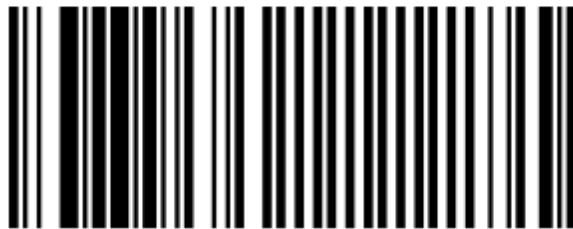
Hex 1



Hex 2



Hex 0



(Enable Code 128)

Hex 1



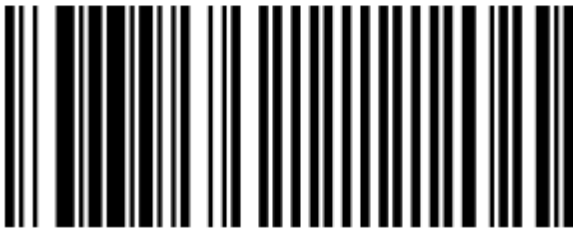
Hex 7



Hex A

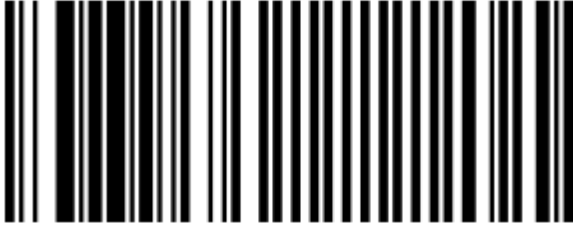


Hex 1

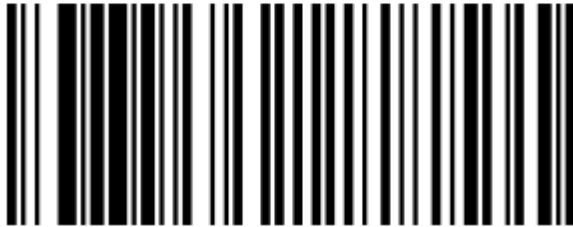


(Enable DataBar)

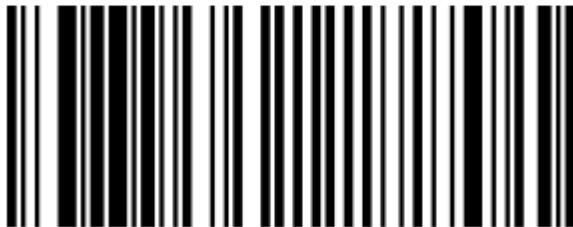
Hex 1



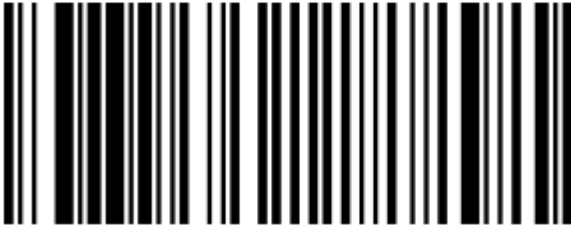
Hex 8



Hex A

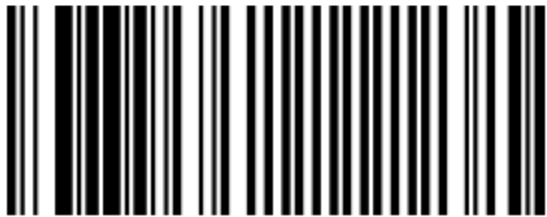


Hex 3



(Finish)

Save and Reset





© NCR Corporation, 2019

NCR endeavors to ensure that the information in this document is correct and fairly stated but does not accept liability for any error or omission.

The development of NCR products and services is continuous and published information may not be up to date. It is important to check the current position with NCR. This document is not part of a contract or license, save insofar as may be expressly agreed.

NCR Corporation
864 Spring Street
Atlanta, GA 30308

P/N 89000944
PIN 45002/092