

ENCOR

- Hardware Setup Guide,
■ NCR RealPOS XR8 (Class 7607)
■ with Windows IoT
■ Version 1.0.1.3
■



ENCOR Hardware Setup Guide, NCR RealPOS XR8

Date of Issue	Product ID Num.	Part Number	Brief Description
December 2017	45002/092	89000921	1.0.0.0 Release
April 2019	45002/092	89000945	1.0.1.3 Release

©Copyright NCR Corporation 1995-2019
All rights reserved

This publication is protected by federal copyright law. This document and its contents are the proprietary, confidential information and property of NCR Corporation ("NCR"). Unauthorized disclosure, reproduction, distribution or use of this document and/or its contents in any form is strictly prohibited. No part of this publication may be reproduced or transmitted into any human or computer language in any form or by any means, stored in a retrieval system, transmitted, redistributed, translated or disclosed to third parties, or de-compiled in any way including, but not limited to, photocopy, photograph, electronic, mechanical, magnetic or manual without the express written permission of NCR or its licensors, if any. This document, notwithstanding the above, may be distributed in electronic or printed form by NCR to personnel who are employed by either (a) a licensee and end user of the subject system of this document or (b) personnel from an authorized NCR Channel Partner or Solution Provider of the subject system of this document. All copies of this document so distributed and/or so authorized, shall contain a full copy of this copyright notice.

NCR has prepared this document as a guide to the proper installation, operation, customization and/or maintenance of NCR products. The drawings and specifications contained herein are the property of NCR and/or its licensors.

NCR endeavors to ensure that the information in this document is correct and fairly stated but does not accept liability for any error or omission. NCR makes no representation or warranties with respect to the contents hereof, and specifically disclaims any implied warranties of merchantability or fitness for a particular purpose or non-infringement. No commitments by NCR or its suppliers are made by or from this documentation which is provided for information only.

Development of NCR products and documentation is continuous: NCR reserves the right to revise this publication and to make changes at any time to the contents hereof or to the products herein described or discussed without notice and without any obligation for NCR to notify any person or organization of such revision or changes. Information published in this document will likely be superseded, and it is recommended that users regularly check for updates and newer versions.

The trademarks NCR, Retailix, StoreNext, ISS45, ScanMaster, R10, ACS, PocketOffice, RPO, RBO, ABO, Connected Payments, ServerEPS, Connected Services, Connected Loyalty, WinEPS and all other NCR product names are registered trademarks or trademarks of NCR; all other trademarks or registered trademarks are the property of their respective owners. Third-party products, services, or company names referenced in this document may be trademarked or copyrighted by their respective owners, and are for identification purposes only. Copyrights, trademarks and license agreements shall be governed and construed in accordance with the laws of the State of New York and the Federal Arbitration Act, and shall benefit NCR, its successors, and assigns.

Address comments and corrections regarding this document to:

Attn: Software Program Director
NCR
864 Spring Street
Atlanta, GA 30308

Configure Bios and Window 10 IoT on NCR XR8 (7607) POS for ENCOR

Obtain the required files (zip file) needed for the XR8 (7607) from the Channel Partners website. **IMPORTANT:** Be sure to use the V8NCROPOS.reg version included with this bundle that is specific to RPSW4202. Do not use prior V8NCROPOS.reg you may have that was bundled with other RPSW.

Current BIOS version at this writing is 2.0.6.0. It is recommended to update to this version.

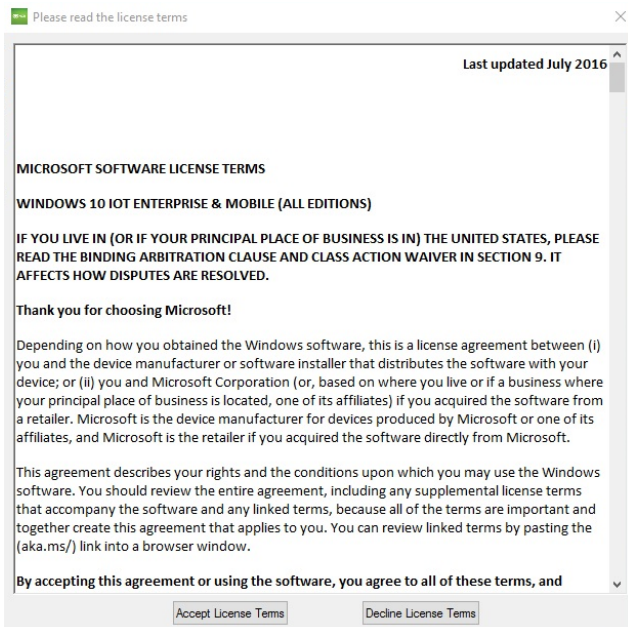
If installing a 59XX Display the minimum Firmware on Monitor required is v010_20150210_1400. This is displayed on initial power up in center of display. There is a known intermittent Blank Screen issue on reboot if below this version of firmware. The latest version is included in the required file zip (59xx_XSeries_STDP602x_Scalar_v010_20160204_1058.)

Check the BIOS settings to ensure that the Network: IBA CL Slot is Disabled and under Fixed Boot Order Priority that the 1st device is set to the Hard Disk. If the Network boot is enabled, the boot time of the POS will be considerably longer.

Note: If you are restoring the image using the XR8-XR7+_Win20-Iot-2016_D370-1065-0100.00.01.wim image, the bootable USB drive will temporarily be set as the 1st device in the Boot Device Priority. Once the image is complete the Boot Priority should be set back to HDD.

Computer Set up:

After restoring to the D370-1066-0100-01.00.00.00.wim image, the Microsoft Software License Terms will display and the user must read and accept the terms.



Installing ENCOR on the NCR XR8 (7607) using Windows 10 IoT

Open Control Panel and Change View by: to small icons

If the computer name or workgroup name needs changed, in Control Panel, click System. Click Advanced system settings.

Under the Computer name tab, domain and workgroup settings, click Change setting. If prompted for a reboot, accept and let the system reboot to update its settings.

Click Date and Time.

Select Change time zone adjust the time zone

Select Change date and time adjust date and time.

Uncheck Notify me when the clock changes

Return to the Control Panel.

Click Power Options.

Click the down arrow by the Show additional plans.

Click High Performance.

Optional – Default settings may cause the monitor to turn off after 15 minutes of inactivity.

You can change this by going to Change Plan Setting and adjust display options.

Return to the main Control Panel.

Click Network and Sharing Center.

Click Change adaptor settings.

Right click the Local Area connection and click Properties.

Click the Configure button, verify/set that all options under Power Management are unchecked.

Click OK.

Right click the Local Area connection and click Properties.

Highlight Internet Protocol Version 4 and click Properties.

Fill in the IP address information.

Click OK.

Click Close.

Return to the Network and Sharing Center.

Click Change advanced sharing settings. Ensure that the option Turn on network discovery and Turn on file and printer sharing are turned on.

Scroll down and turn off Password protected sharing under All Networks.

Do this for both the Home or Work and Public sections.

Click Save changes.

Return to the Control Panel.

Click Display.

Click Change display settings on the left

Click Advanced display settings

Select 800 X 600 on all monitors.

Click Apply.

Click to keep changes

Go back to Settings

Installing ENCOR on the NCR XR8 (7607) using Windows 10 IoT

Disable Notifications

Go to Notifications & Actions

Set “Get Notifications from apps and other senders” to No

User Account Control settings

Click User Accounts

Click Change User Account Control settings

Slide bar to Never notify

Click Ok

NOTE: The Windows Update Service may need Enabled.

Search for Windows Updates in Settings.

Click Check for updates to Apply Windows updates

User may want to adjust Windows update options.

Click OK.

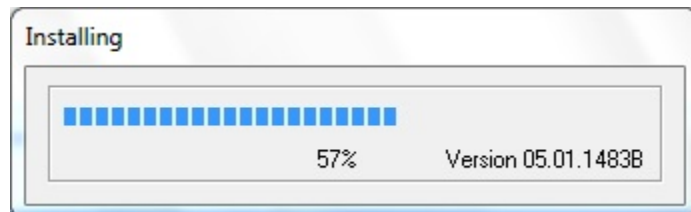
Return to the main Control Panel.

Windows 10 IoT is now be ready for software installation.

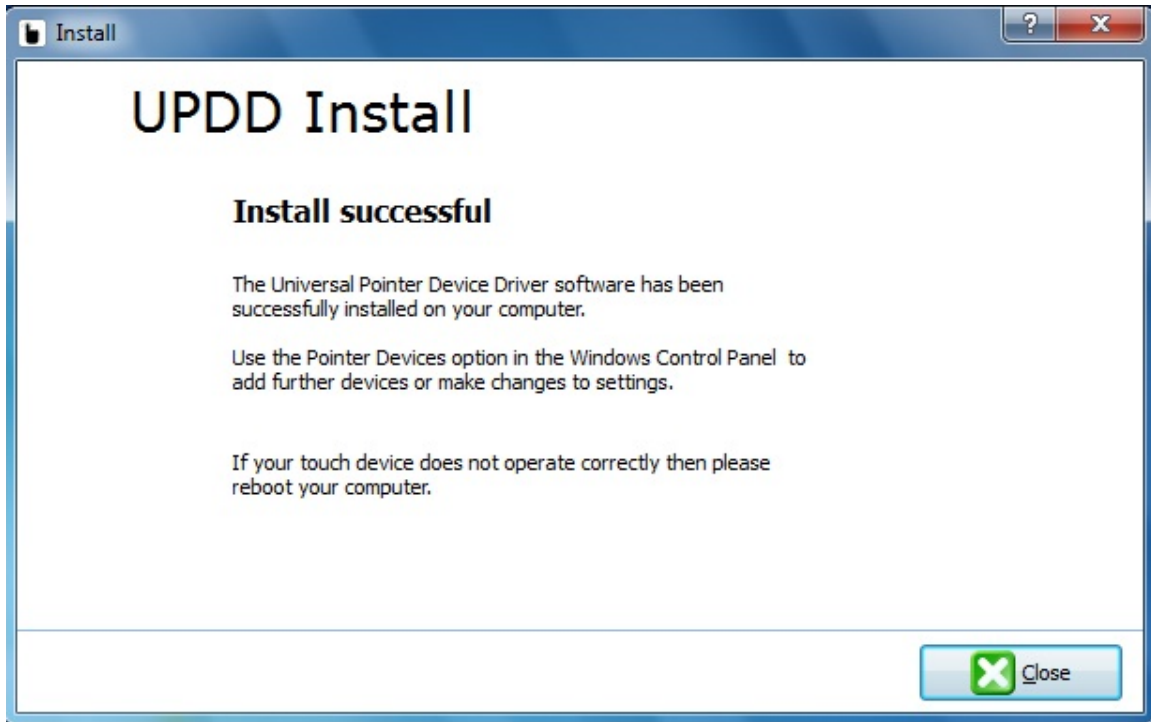
The XR8 uses the Touch Base Driver. Extract the Touch Base Drivers_05_01_1483 from the required files downloaded earlier and place in c:\Install\Drivers\Touch-Base_1483 (create this folder). Right click and install as Administrator. Calibration when using this driver should NOT be performed. NO calibration is necessary.

Installing ENCOR on the NCR XR8 (7607) using Windows 10 IoT

Click Install. (ONLY CLICK ONCE- Please wait as there is a noticeable delay before you see install progress)

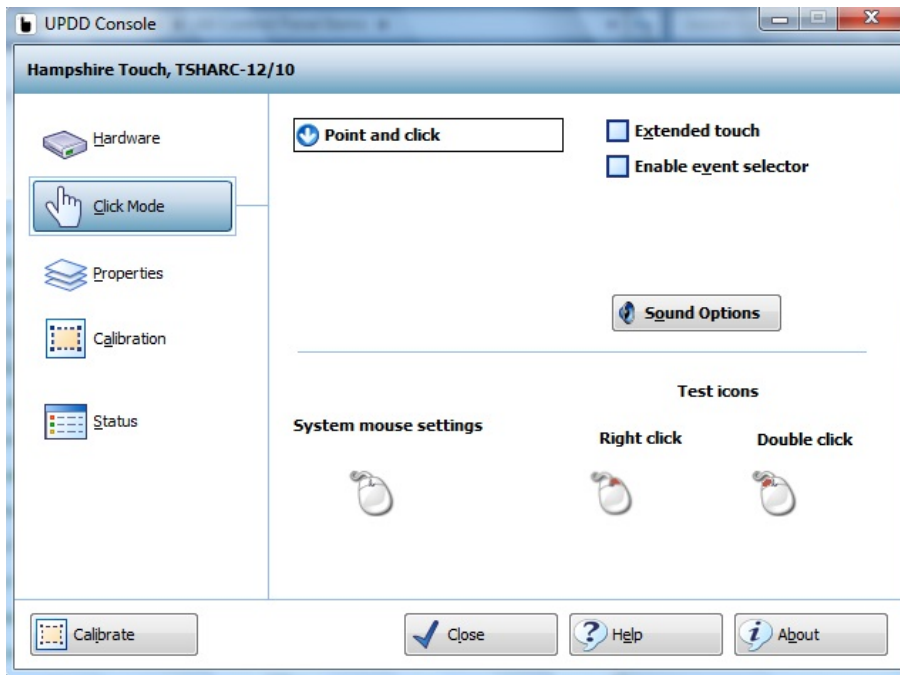


Installing ENCOR on the NCR XR8 (7607) using Windows 10 IoT



Click Close.

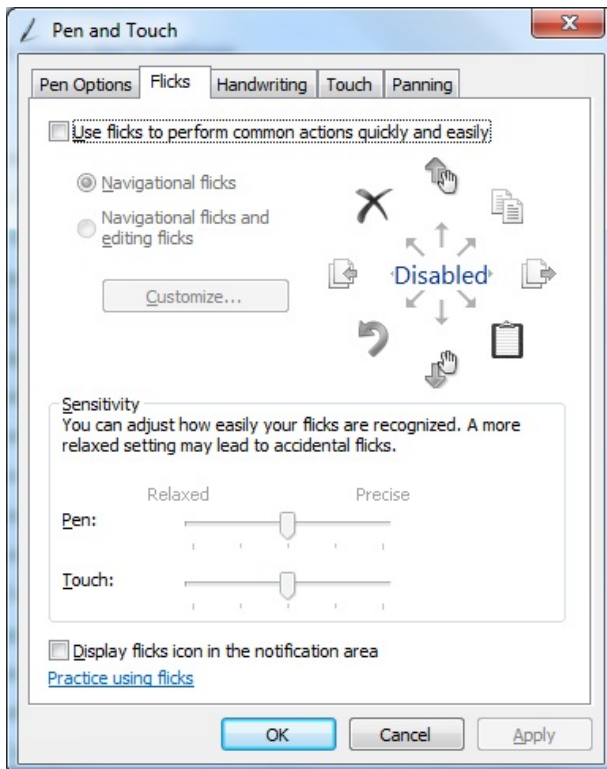
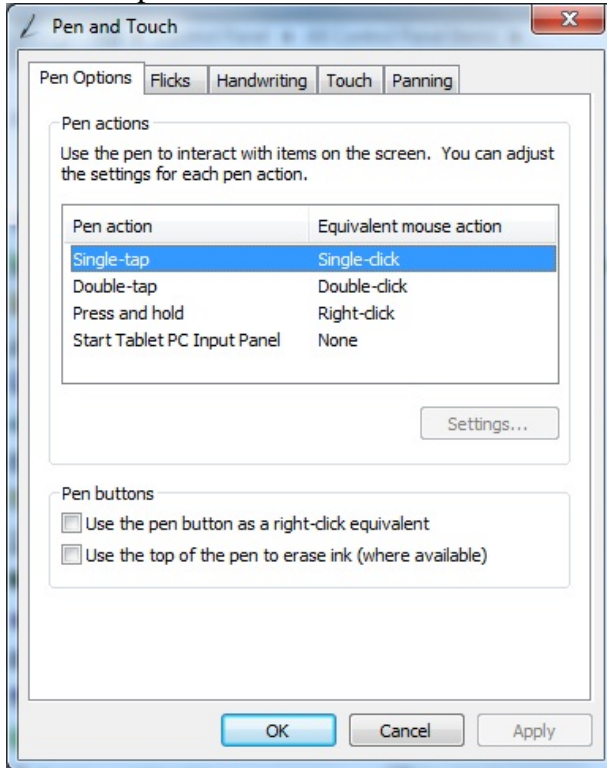
Under Control Panel-> Pointer Devices
Select Point and click.



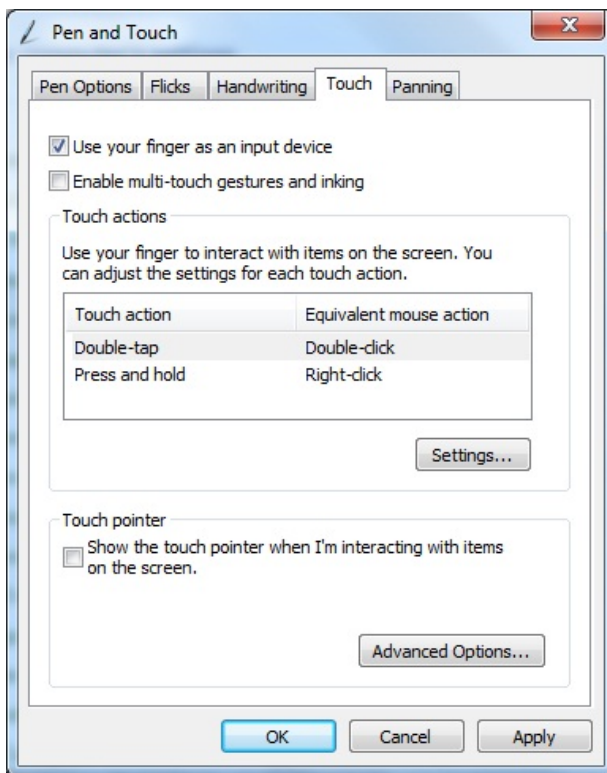
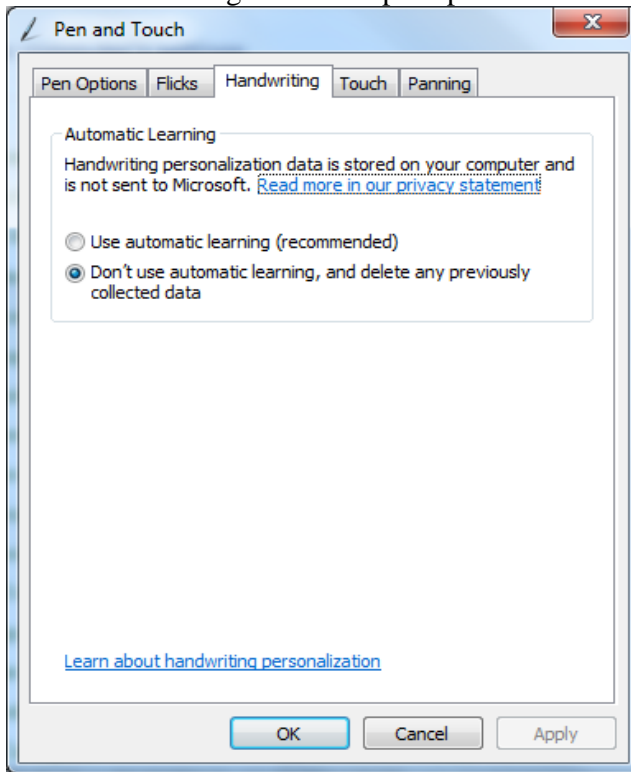
Select Close.

Under Control Panel-> Pen & Touch.

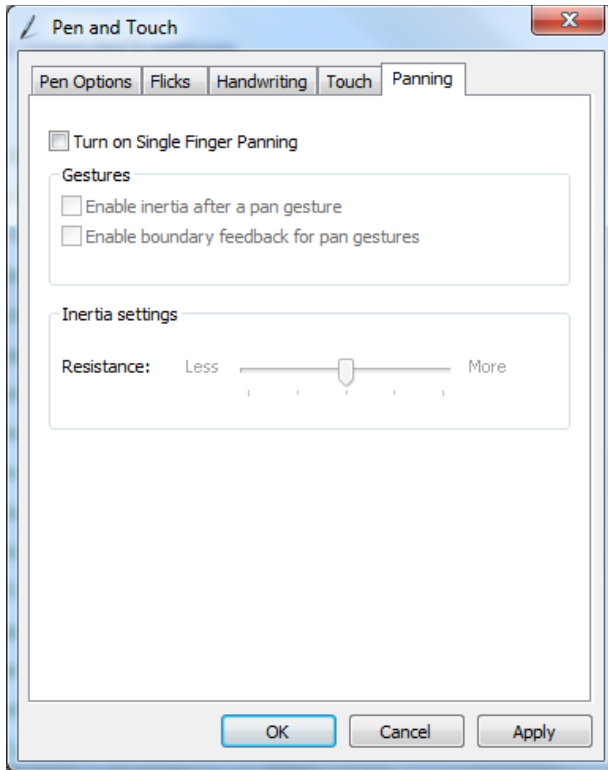
Turn off options as indicated below.



Delete handwriting data when prompted

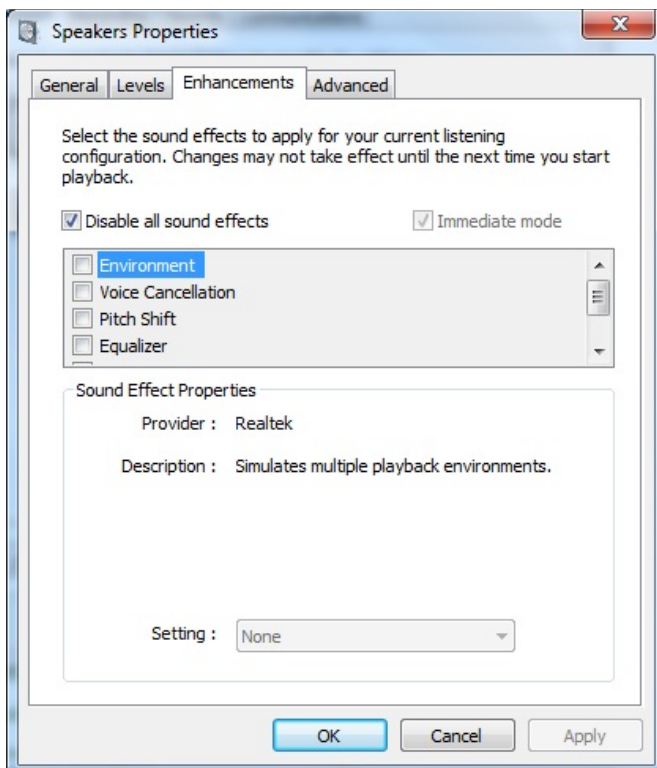


Installing ENCOR on the NCR XR8 (7607) using Windows 10 IoT



Control Panel -> Sound

Click on Playback Tab, Click on Speakers, Click on Properties and Click on Enhancements Tab and Disable All sound effects. Do the same for any other speakers listed.



Installing ENCOR on the NCR XR8 (7607) using Windows 10 IoT

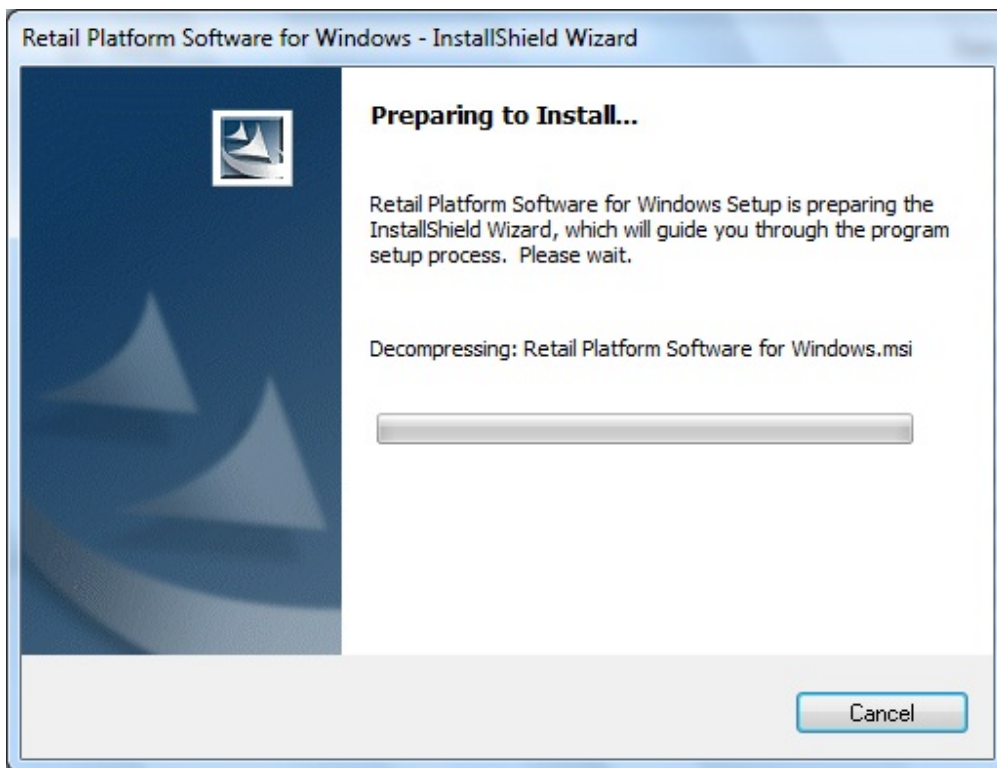
Install NCR Retail Platform Software for Windows (OPOS).

Obtain the Retail Platform Software for Windows version 5310.zip from the NCR Support website for XR8 (7607). Create the folder RPSW under C:\Install\Drivers and extract the contents of Retail Platform Software for Windows version 5310.zip to that folder. Along with any RPSW updates.

Download the V8NCROPOS.REG from the Retailix Channel Partner website and place in the RPSW folder as well.

Right Click the Retail Platform Software for Windows_5310.exe and Click Run as administrator.

The installation starts.

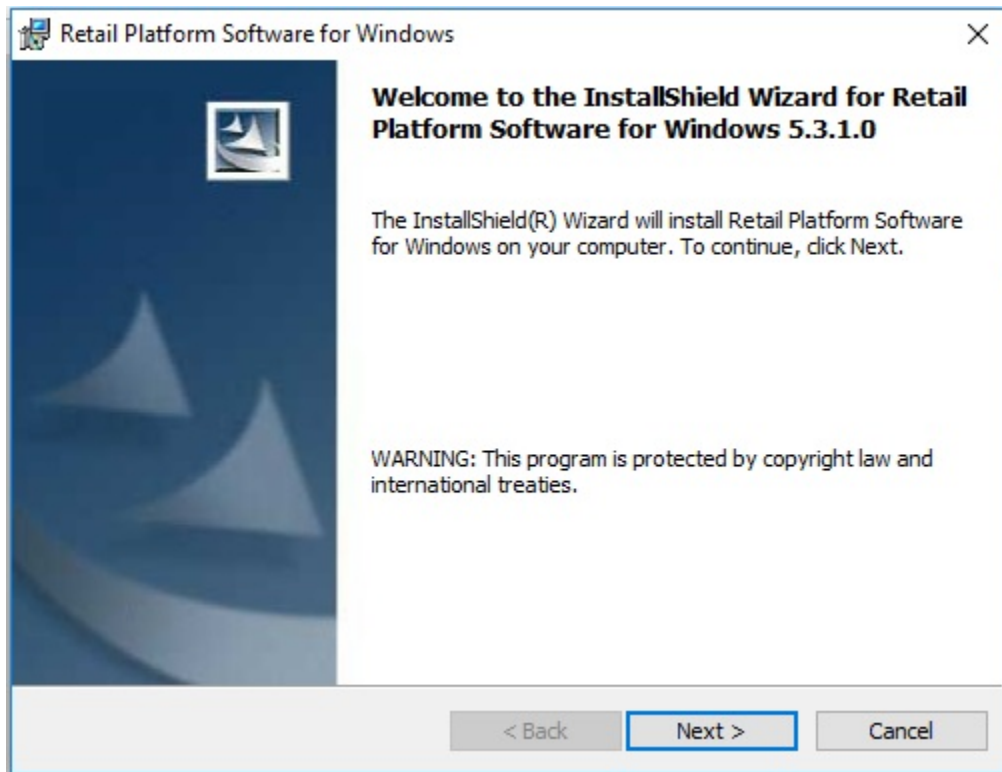


Installing ENCOR on the NCR XR8 (7607) using Windows 10 IoT

The machine type is detected. Click Confirm (don't change the other drop downs).

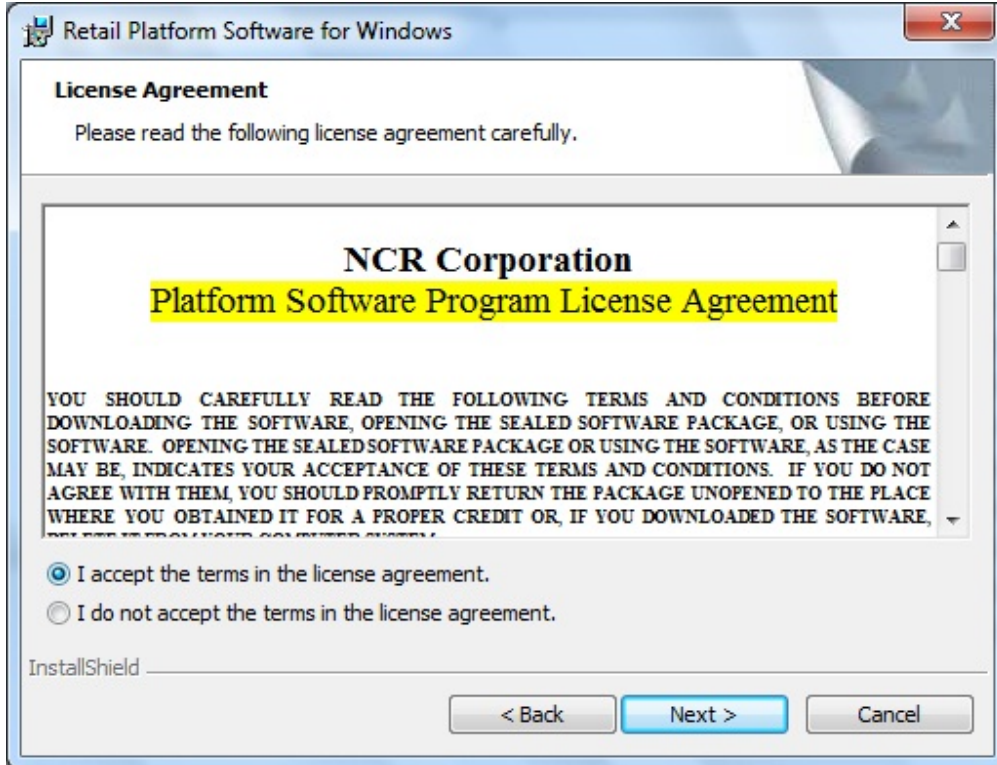


Click Next at the Welcome screen.

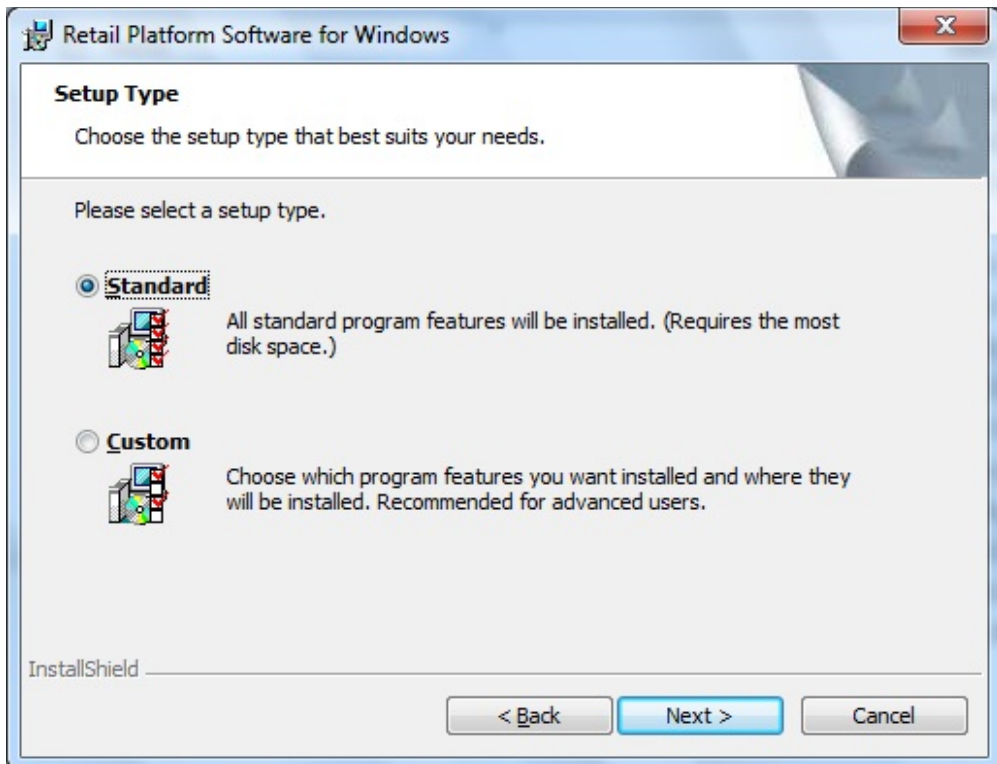


Installing ENCOR on the NCR XR8 (7607) using Windows 10 IoT

Click the I accept the terms box and click Next.

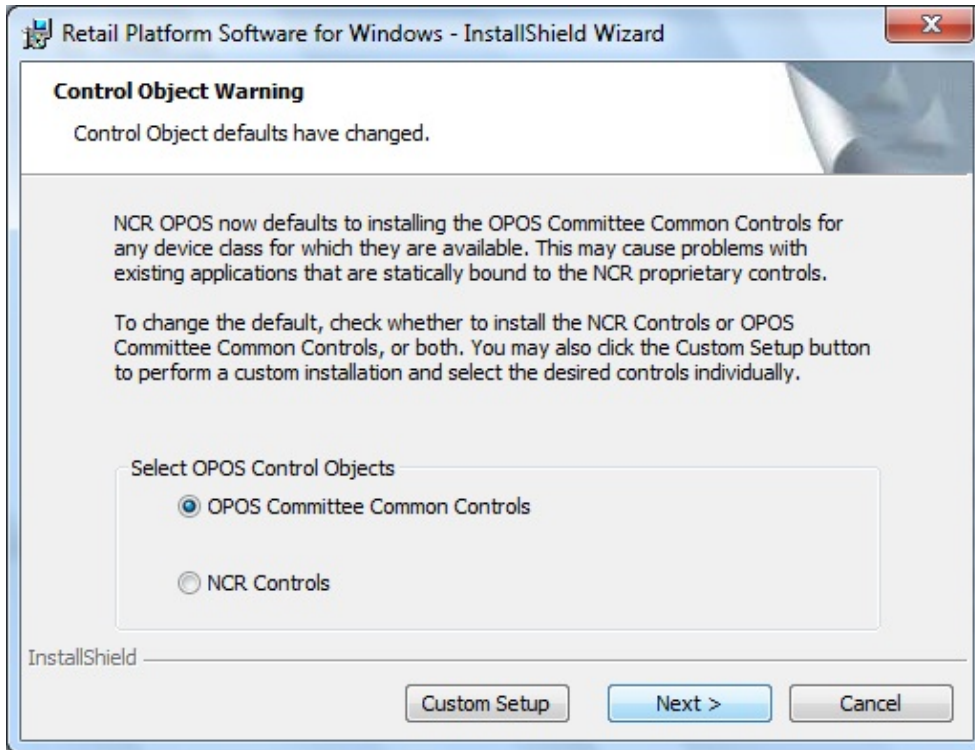


At the Setup Type screen select Standard and Click Next.

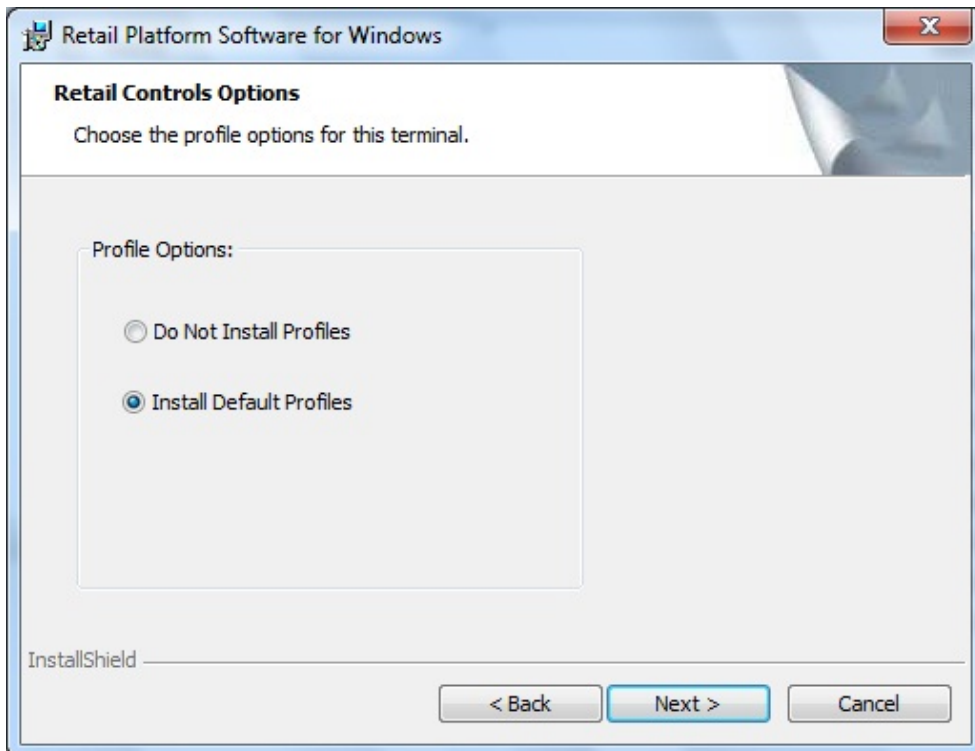


Installing ENCOR on the NCR XR8 (7607) using Windows 10 IoT

At the Control Object Warning screen select OPOS Committee Common Controls and click Next.

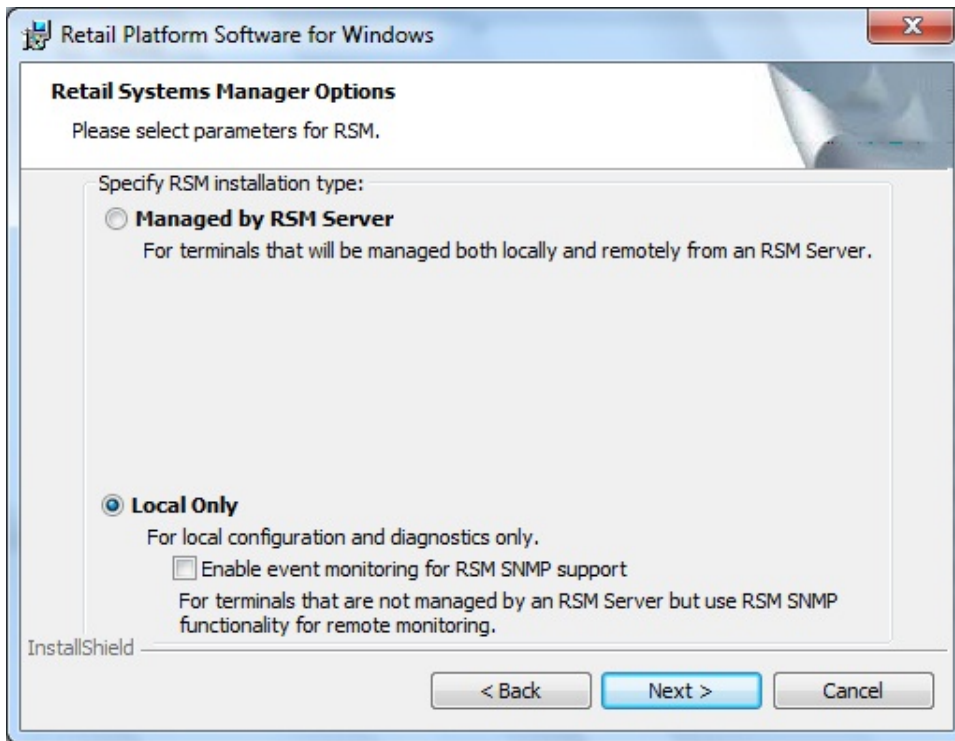


At the Retail Control Options screen select Install Default Profiles and click Next.

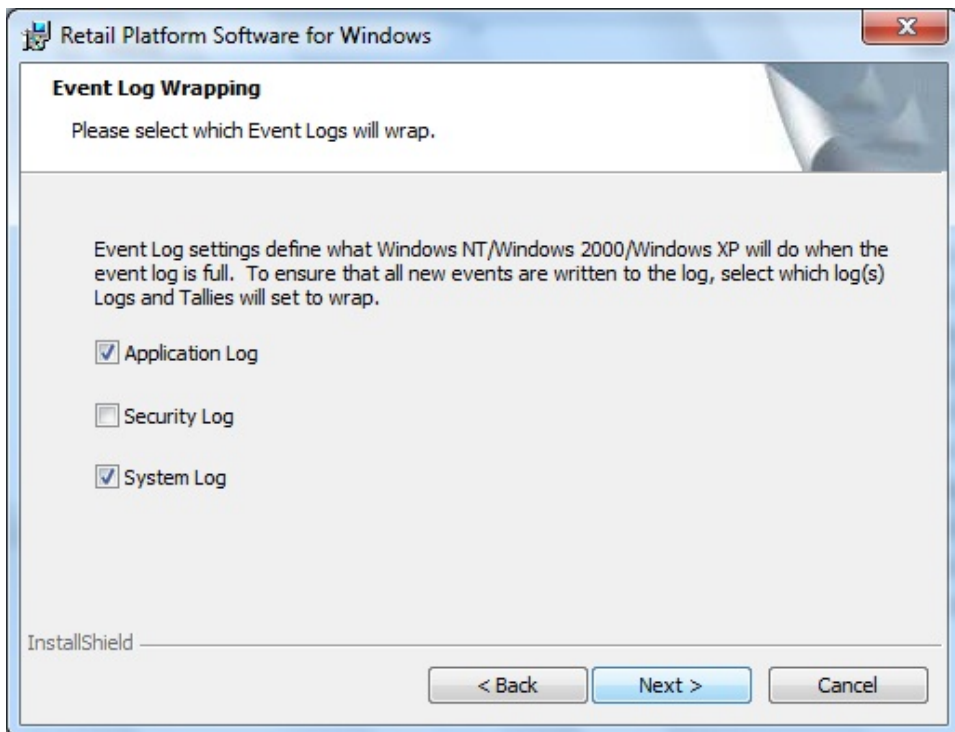


Installing ENCOR on the NCR XR8 (7607) using Windows 10 IoT

At the Retail Systems Manager Options screen select Local Only and click Next unless you are using a RSM server for remote management, in which case chose Managed by RSM Server and answer the additional questions on the screen.

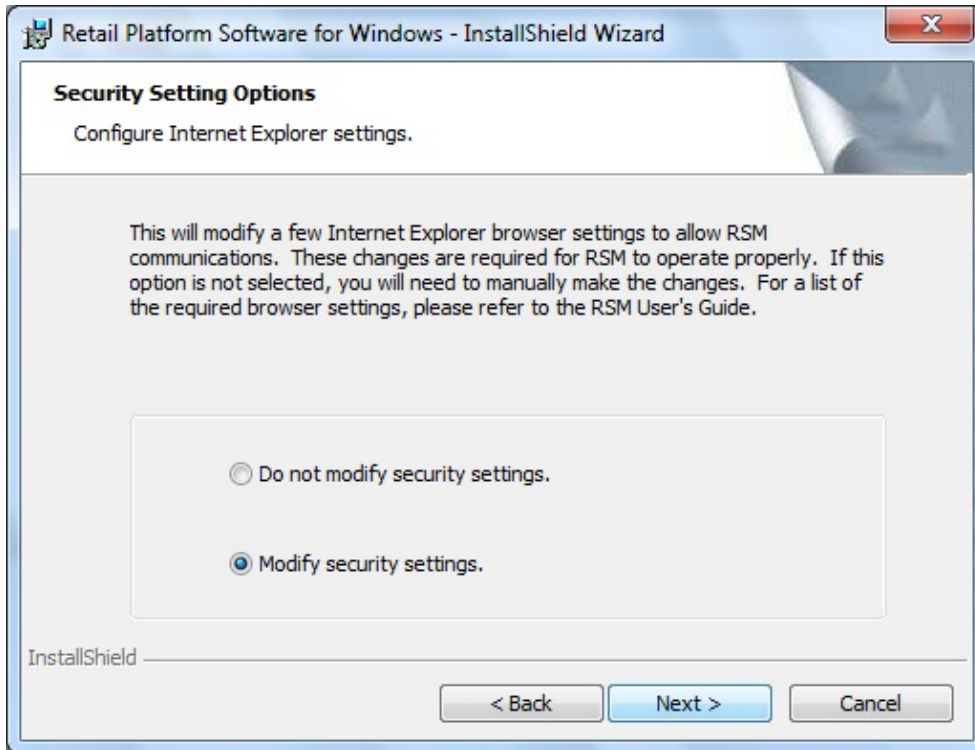


At the Event Log Wrapping screen click Next.

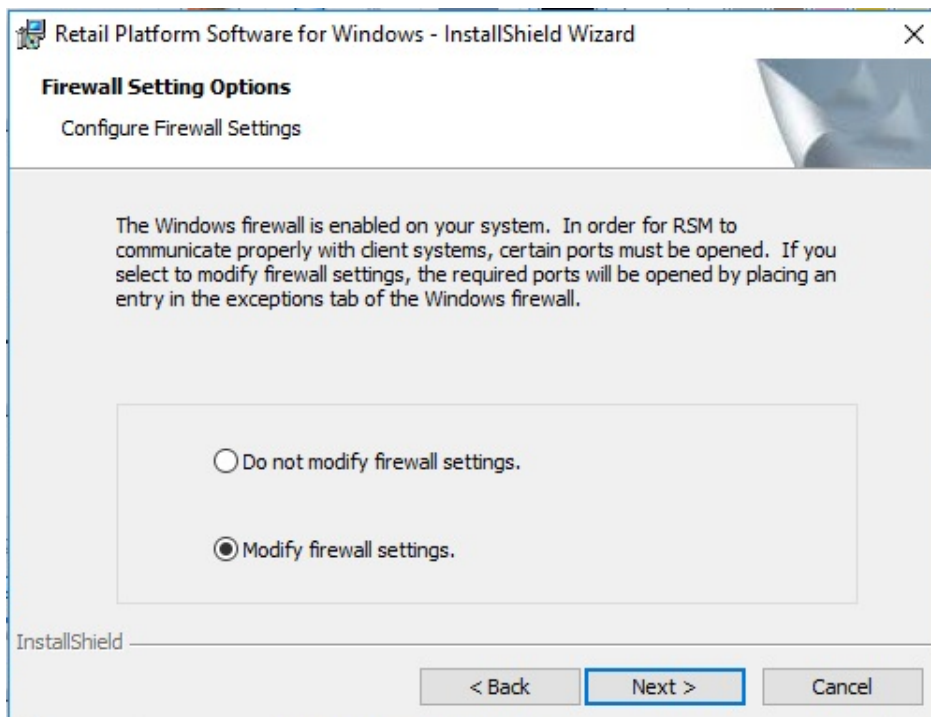


Installing ENCOR on the NCR XR8 (7607) using Windows 10 IoT

At the Security Setting Options screen select Modify security settings and click Next.

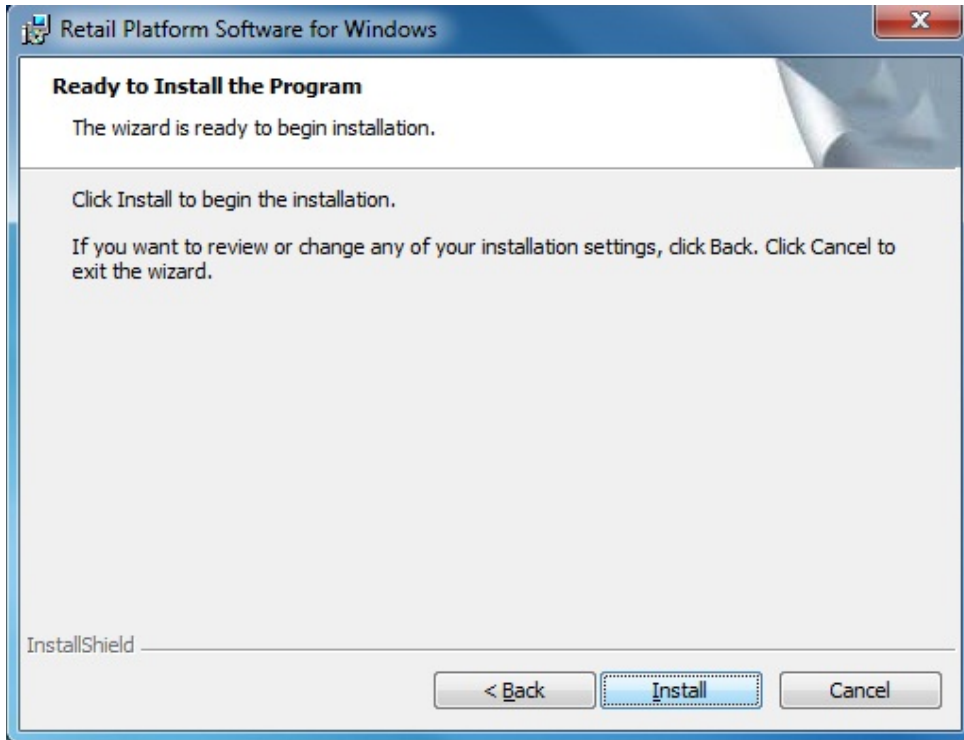


At the Firewall settings option select Modify Firewall Settings and click Next

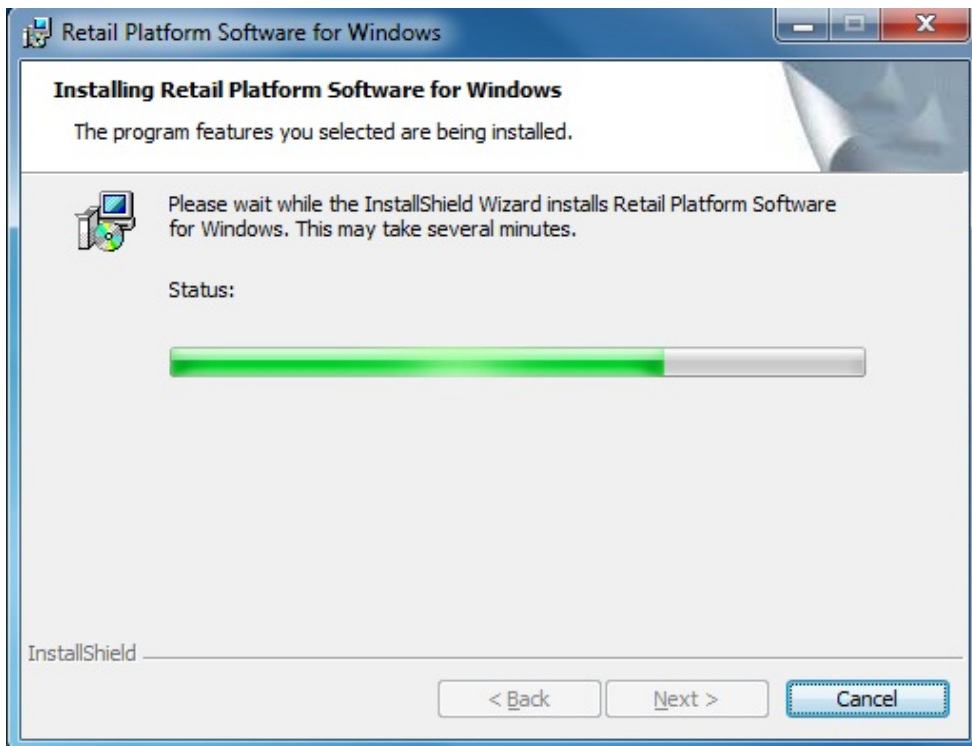


Installing ENCOR on the NCR XR8 (7607) using Windows 10 IoT

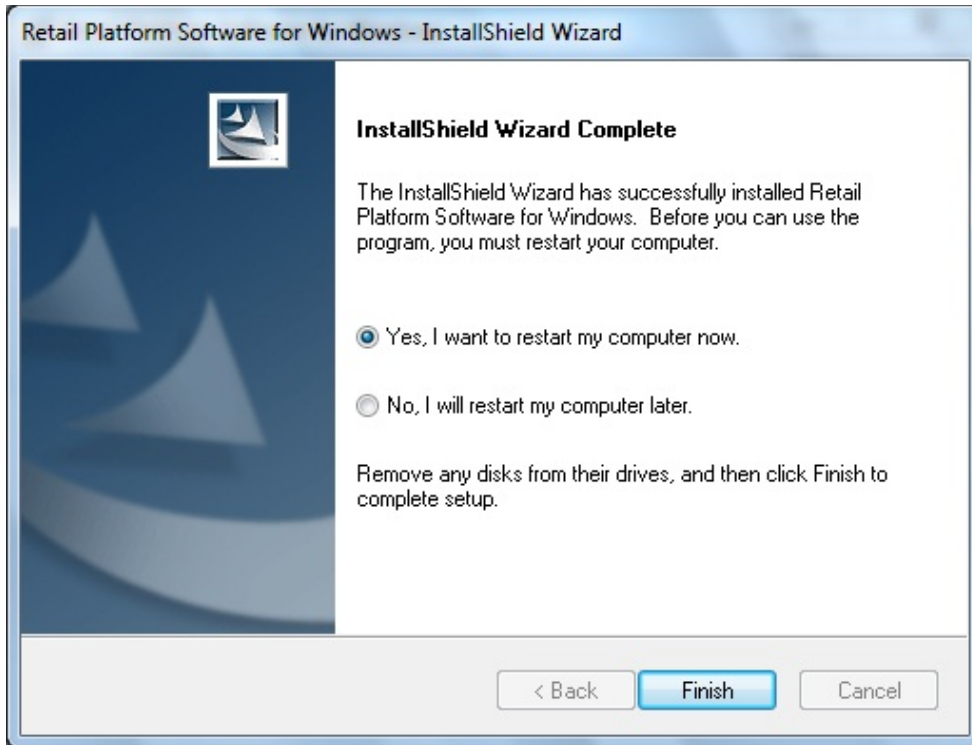
At the Ready to Install the Program screen click Install.



RSM is installed.



Installing ENCOR on the NCR XR8 (7607) using Windows 10 IoT



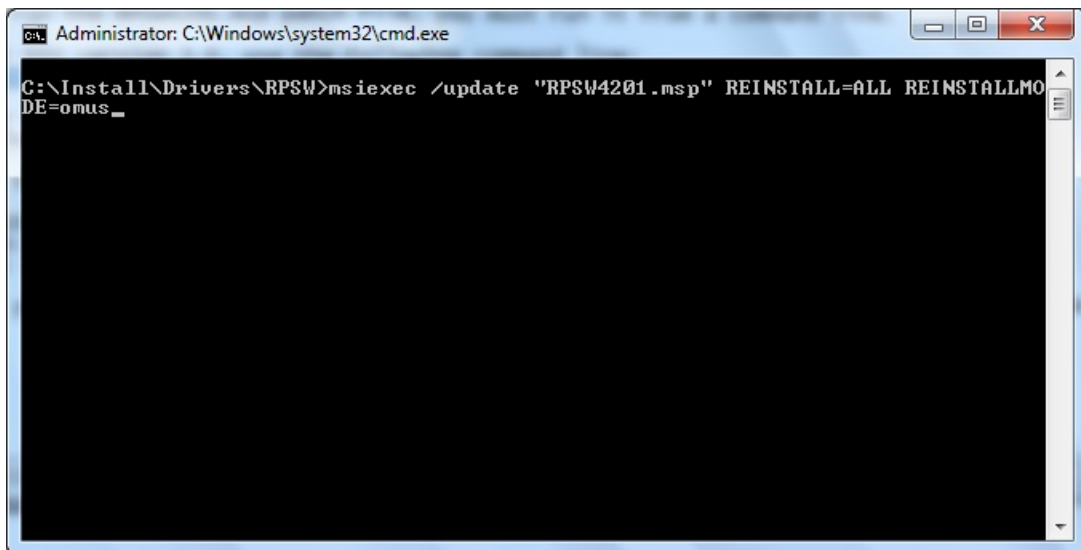
Click Finish to restart computer. Log back in and continue.

You must also apply the RPSW4202.MSP patch after installing RPSW4200.

Applying RPSW 5311 patch to currently installed RPSW 5310

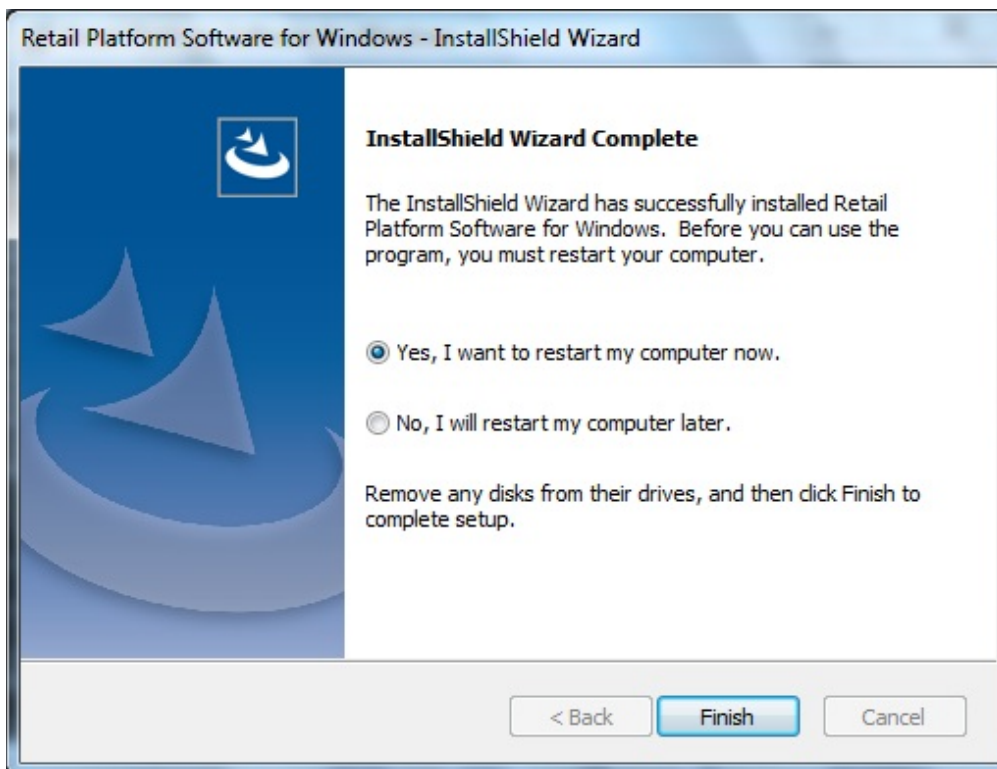
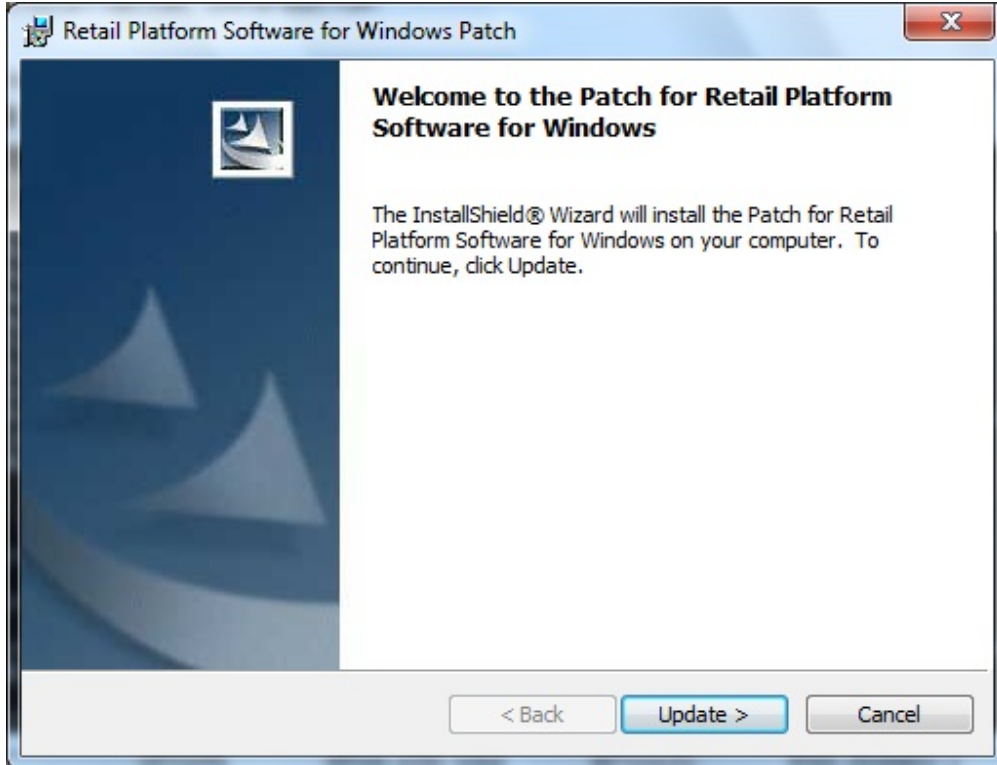
- 1) Copy the RPSW5311.MSP patch to your local drive and from a command line path to that location and run the following command:

```
msiexec /update "RPSW5311.msp" REINSTALL=ALL REINSTALLMODE=omus
```



Installing ENCOR on the NCR XR8 (7607) using Windows 10 IoT

Click Update.



Installing ENCOR on the NCR XR8 (7607) using Windows 10 IoT

At this point attach the USB devices, i.e., POS printer, scanner. The Cash Drawer is to be plugged into the Cash Drawer port on the XR8 (7607) motherboard regardless of which printer is used.

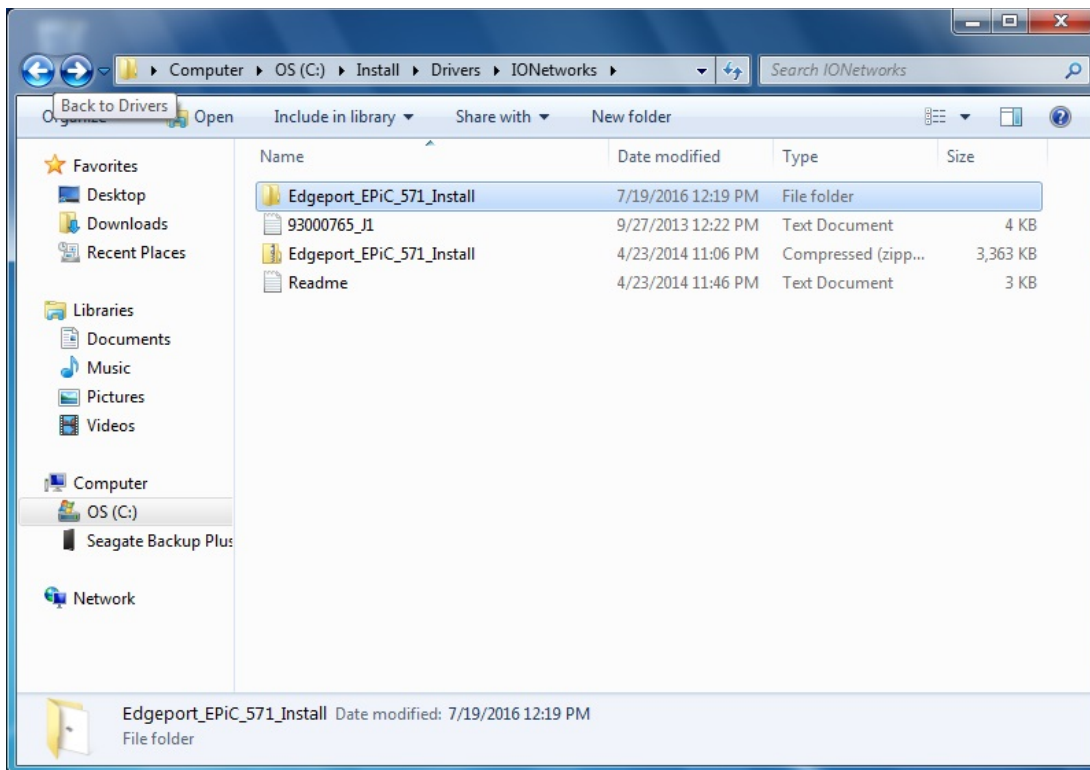
At the restart message box click Yes.
At the completed screen click Finish.

After reboot, logon as administrator.

Don't attempt to setup your devices at this point. That will be explained later in this document.

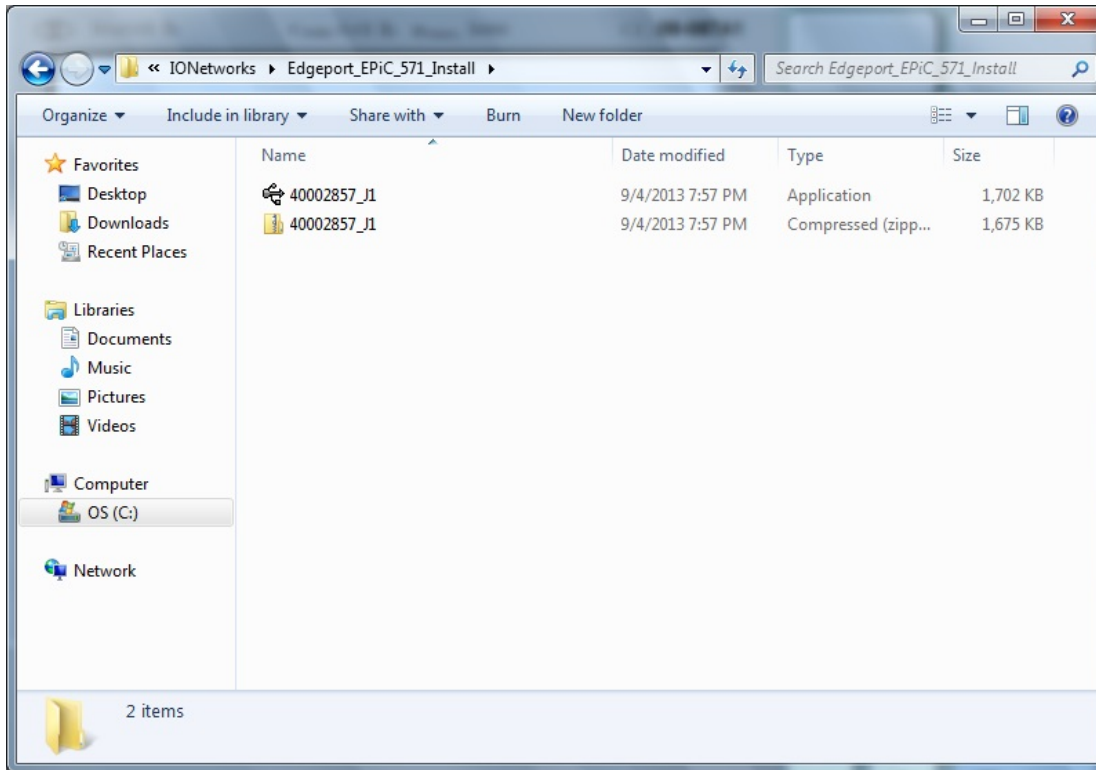
Installing NCR printer drivers (IONetworks). Use the IO_Network_Win_7_XP_40002857_J1.zip obtained earlier when you download required files for XR8.

Rename existing IONetworks folder to IONetworks_OLD. Extract IO_Network_Win_7_XP_40002857_J1.zip to C:\install\drivers\IONetworks. Extract the Edgeport_EPiC_571_Install into the IONetworks folder.

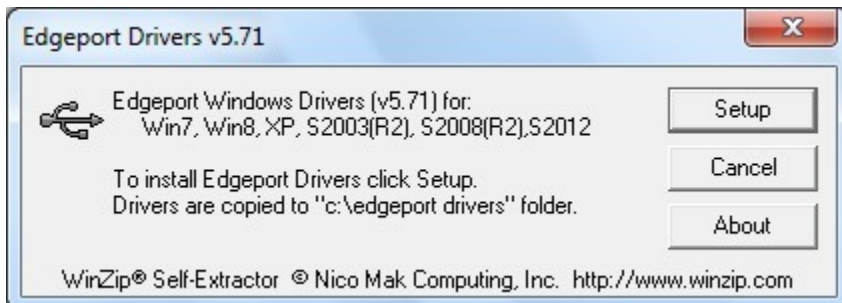


Installing ENCOR on the NCR XR8 (7607) using Windows 10 IoT

Click on the Edgeport_EPiC_571_Install folder created and right click and run 40002857_J1 as administrator.



Click Setup to install. Drivers will be automatically installed for the NCR printer.



Restart and login as administrator.

If you are using an Epson TM-6000III/IV USB printer, install the Epson OPOS and set up the printer via the Epson utility.

From the C:\Install\Drivers\RPSW folder on the POS and double click V8NCROPOS.reg This will install the Device Profiles. **ONLY DO THE FOLLOWING** if using an NCR 5954 Dynakey. Go to the C:\Install\Drivers\RPSW folder and double click the V8Dynakey.reg. This loads the keyboard map file. Now from the C:\Install\Drivers\RPSW folder, unzip the USBUtilities.zip to C:\Program Files\NCR\USB Keyboard. The USB

Installing ENCOR on the NCR XR8 (7607) using Windows 10 IoT

Keyboard folder will need created. Once the files are in place, run the Install.bat file. Now place the 4 exe files that start with “Set” into the Startup folder.

NOTE: If you ever uninstall NCR RSM(OPOS) and reinstall it will be necessary to go to the C:\Install\Drivers\RPSW folder on the POS and double click V8NCROPOS.reg to reinstall the correct Device Profiles. The Device settings will also need redone to match the attached devices.

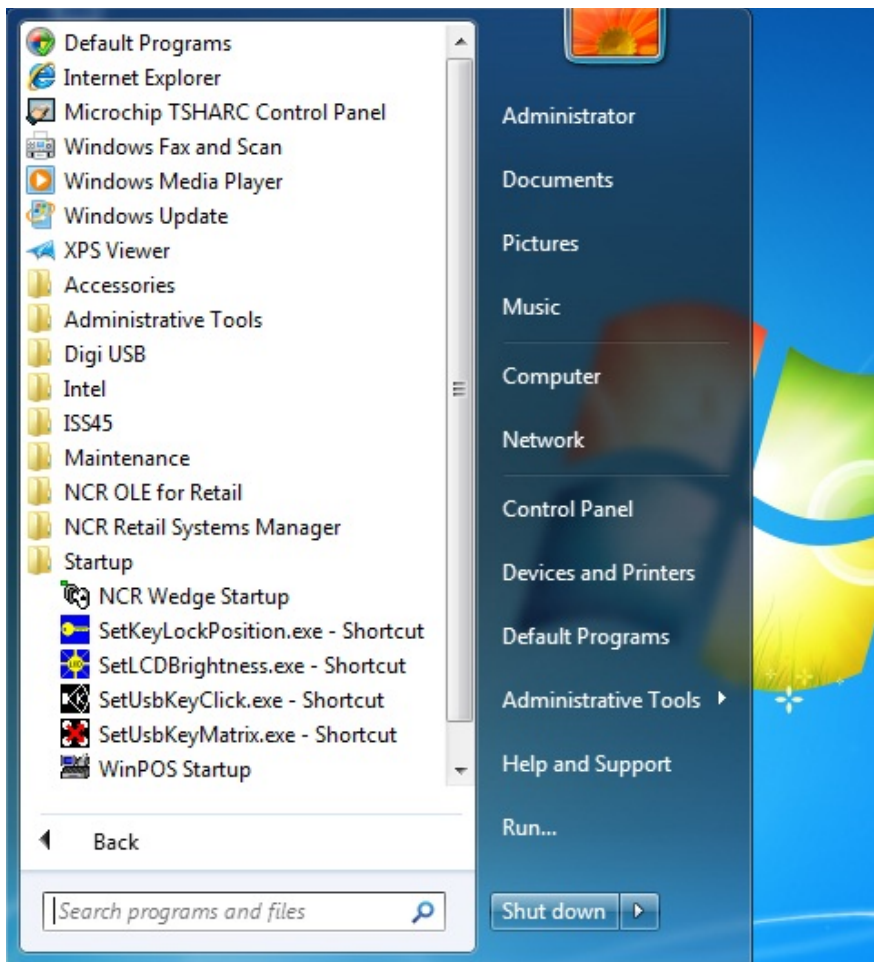
Open Explore window and navigate to the C:\Program Files\NCR\USB Keyboard folder. Highlight the 4 Set programs, right click and select Send to > Desktop create shortcut.

Go to the Desktop and highlight the 4 new shortcuts, right click and select cut.

Click Start, click All Programs, right click Startup and select Open from the drop down menu.

Paste the shortcuts into the right panel.

Verify that the shortcuts are in the Startup.



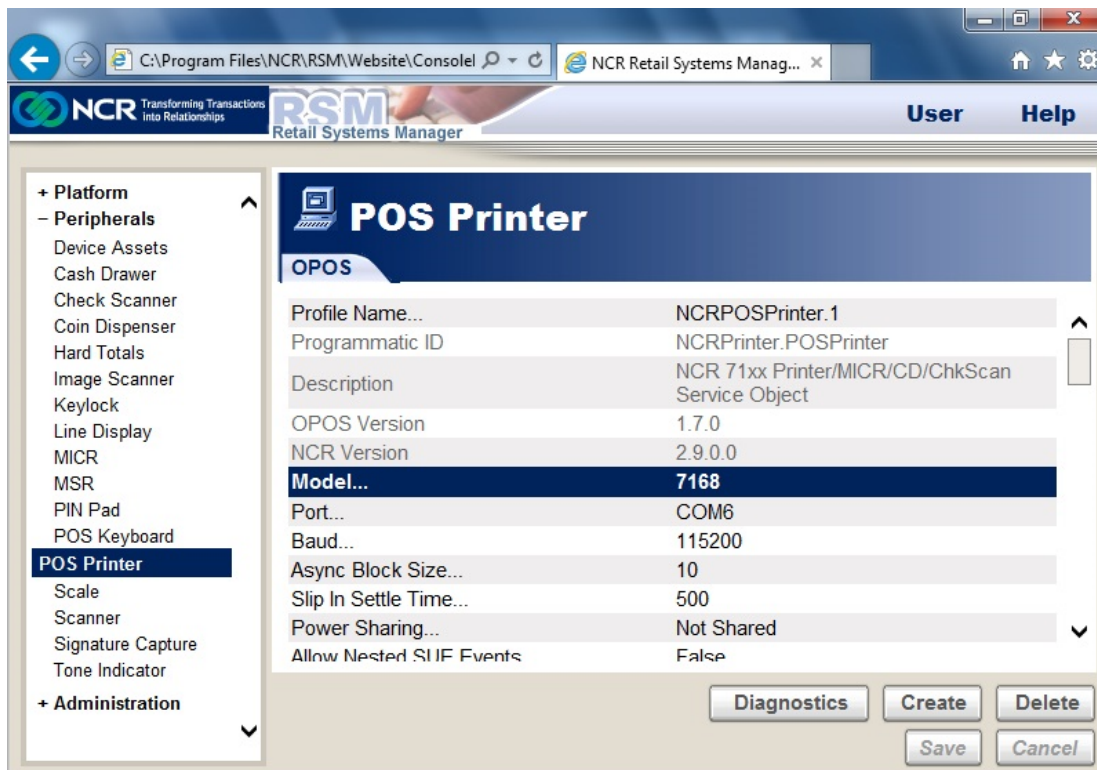
Installing ENCOR on the NCR XR8 (7607) using Windows 10 IoT

The following devices profiles were installed by the V8NCROPOS.REG file:

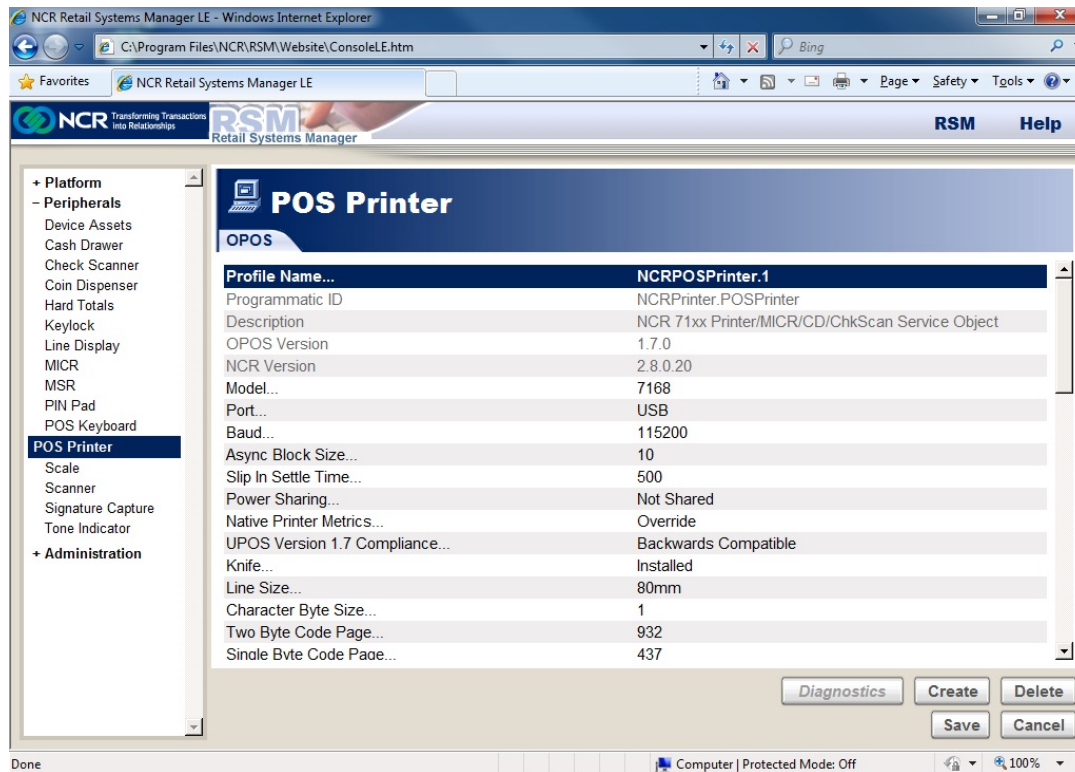
NCRCashDrawer.1, NCRMICR.1, NCRPOSPrinter.1, NCRScale.7872, NCRScanner.7872 and NCR ToneIndicator.1. Other profiles were installed via the RSM install but only those listed above are currently supported by ENCOR. Changing to other profiles will cause device failures in ENCOR.

Some of the above profiles should work as is, however, some profiles such as NCRPOSPrinter.1, NCRScale.7872 and NCRScanner.7872 may need changed depending on which printer or scanner/scale is attached to the POS. It is not the intention of this document to document how to use the RSM LE setup. Information on this can be found on the NCR website. That said, the device setup is fairly straight forward and the following screen provides an example on device setup.

Run RSM LE and configure your devices.



Installing ENCOR on the NCR XR8 (7607) using Windows 10 IoT



Once you have chosen the correct profile (see choices above), you normally will only have to choose the correct Model number of your device. Always select USB as your Port. For the 7168 printer, there are some additional settings to choose single or double sided printing. If you want double sided printing go to the Two Sided Thermal Mode Option and select Double sided Automatic Split Receipt. (This requires special printer paper).

Now that the OS, network and device drivers are installed and configured, run the SN - Prerequisite Installer to install the required dot net.

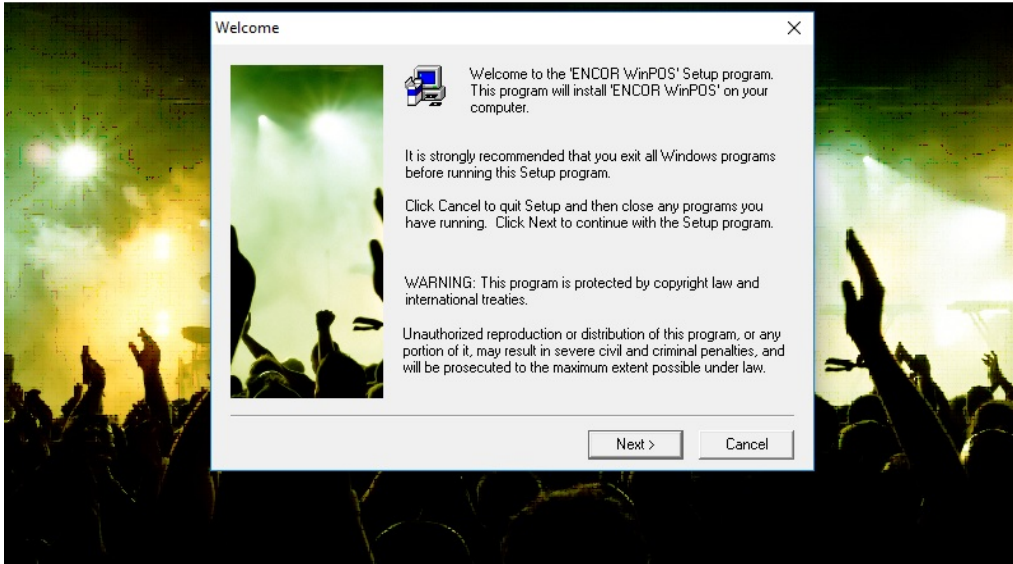
After the reboot, you are now ready for the ENCOR WinPOS install. See the Install guide on the website.

Use the following corresponding screens when doing the install.

Installing ENCOR on the NCR XR8 (7607) using Windows 10 IoT

At the Welcome Screen Click **Next**

ENCOR WinPOS Installation ***Version: 1.0.1.3***

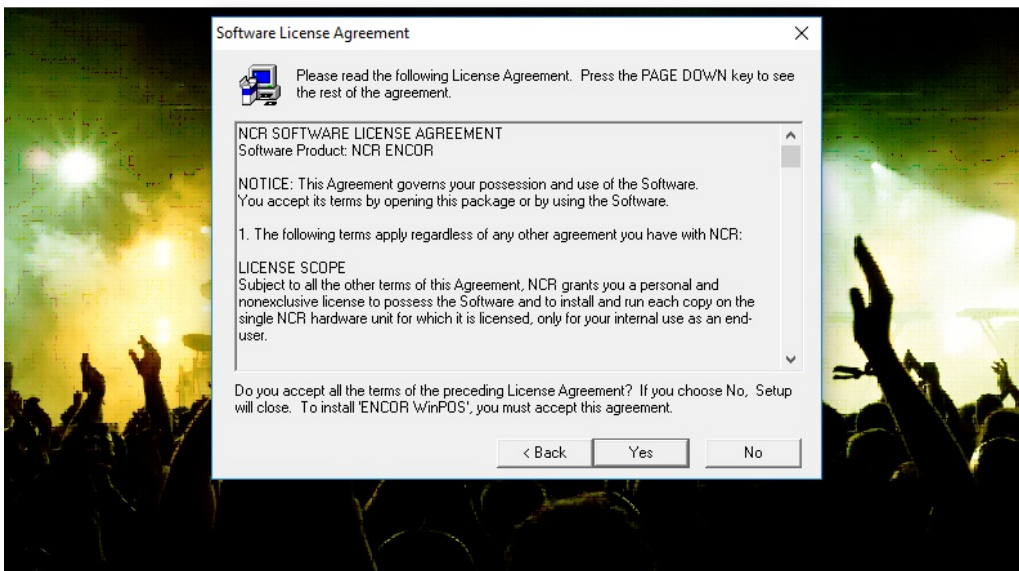


© 2017 NCR
All Rights Reserved
ENCOR is a trademark of NCR

commerce made complete

Accept the Software License Agreement by selecting **Yes**

ENCOR WinPOS Installation ***Version: 1.0.1.3***



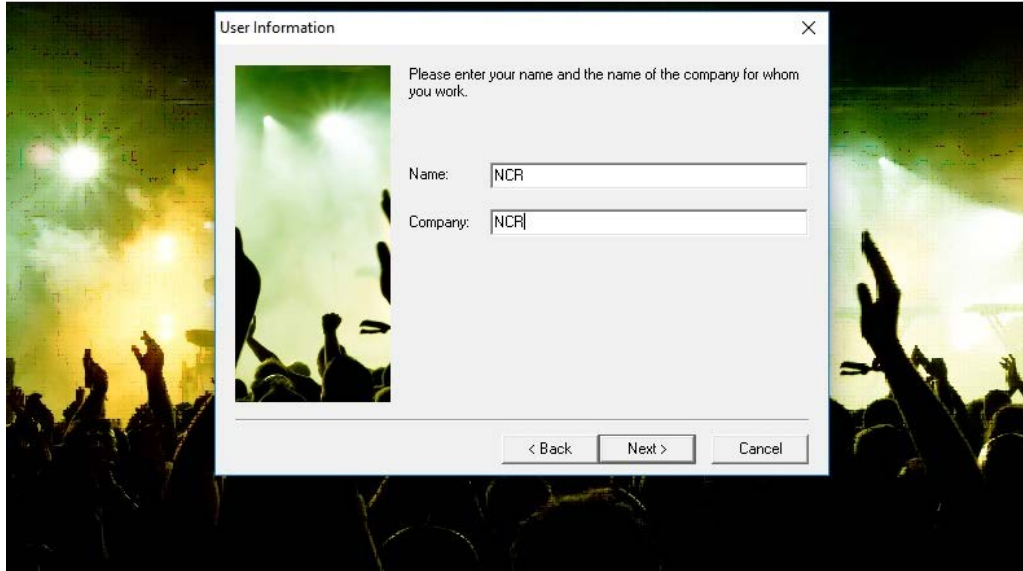
© 2017 NCR
All Rights Reserved
ENCOR is a trademark of NCR

commerce made complete

Installing ENCOR on the NCR XR8 (7607) using Windows 10 IoT

Enter the User Information

ENCOR WinPOS Installation
Version: 1.0.1.3



© 2017 NCR
All Rights Reserved
ENCOR is a trademark of NCR

commerce made complete

Confirm the Registration by selecting **Yes**

ENCOR WinPOS Installation
Version: 1.0.1.3



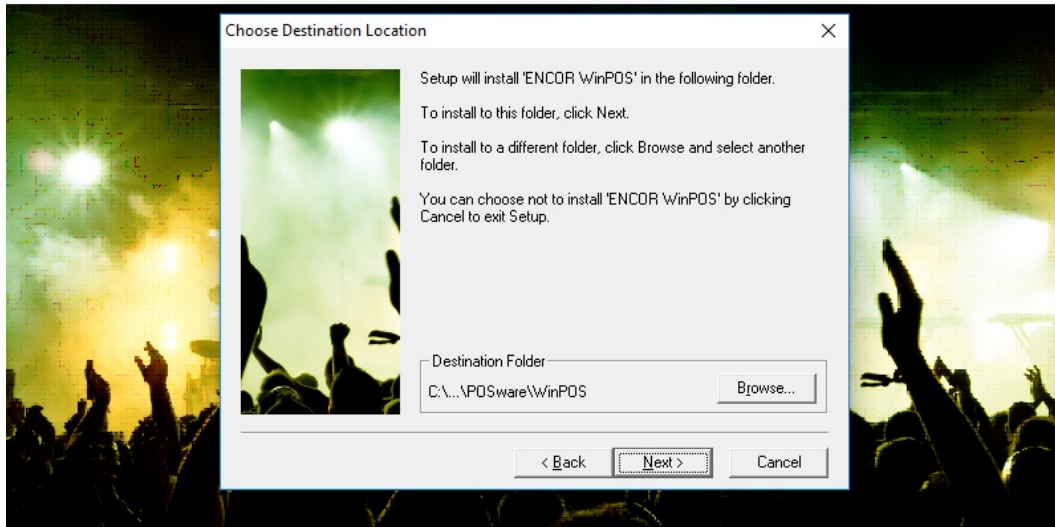
© 2017 NCR
All Rights Reserved
ENCOR is a trademark of NCR

commerce made complete

Installing ENCOR on the NCR XR8 (7607) using Windows 10 IoT

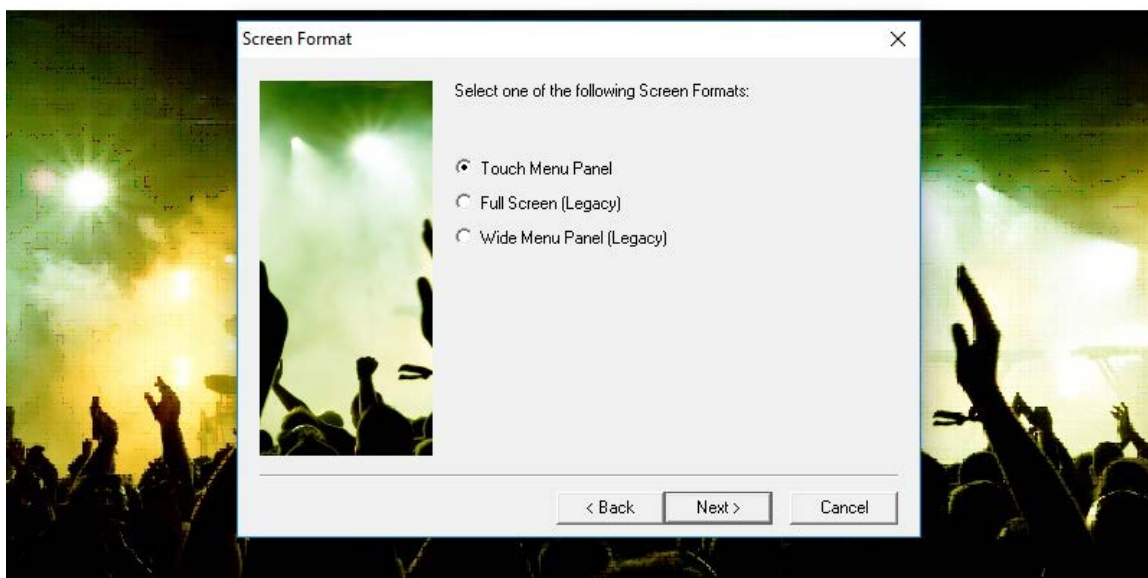
Select **Next** to Choose Destination Location

ENCOR WinPOS Installation *Version: 1.0.1.3*



Select **Touch Menu Panel** and click **Next**

ENCOR WinPOS Installation *Version: 1.0.1.3*



Installing ENCOR on the NCR XR8 (7607) using Windows 10 IoT

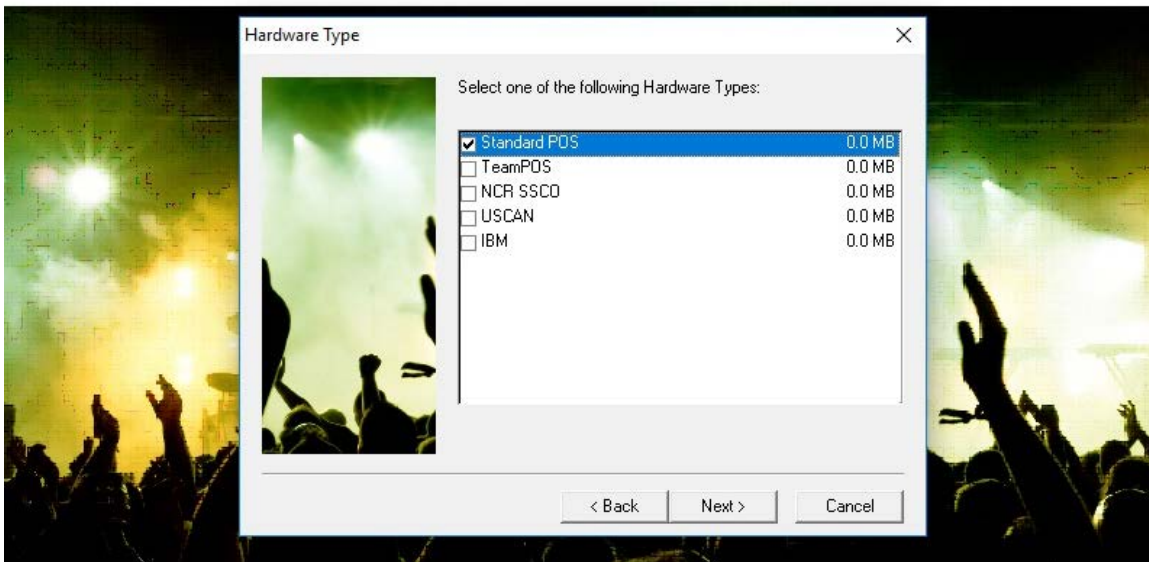
If using dual monitors, select Dual Screen. If not Select Single Screen

ENCOR WinPOS Installation
Version: 1.0.1.3



Under Hardware Type select **Standard POS**.

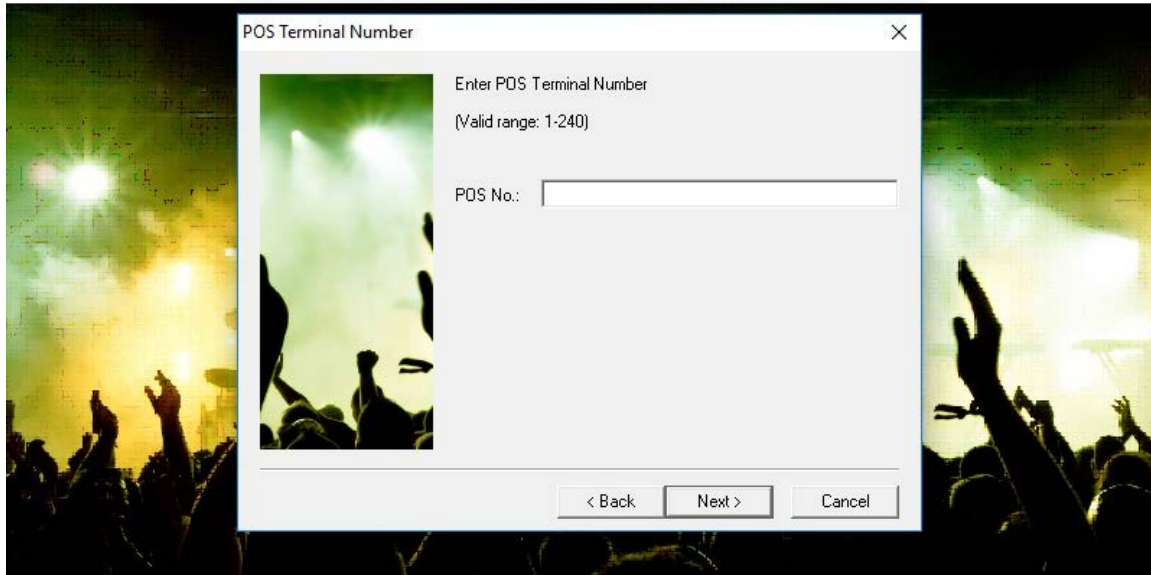
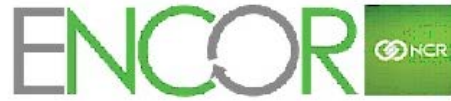
ENCOR WinPOS Installation
Version: 1.0.1.3



Installing ENCOR on the NCR XR8 (7607) using Windows 10 IoT

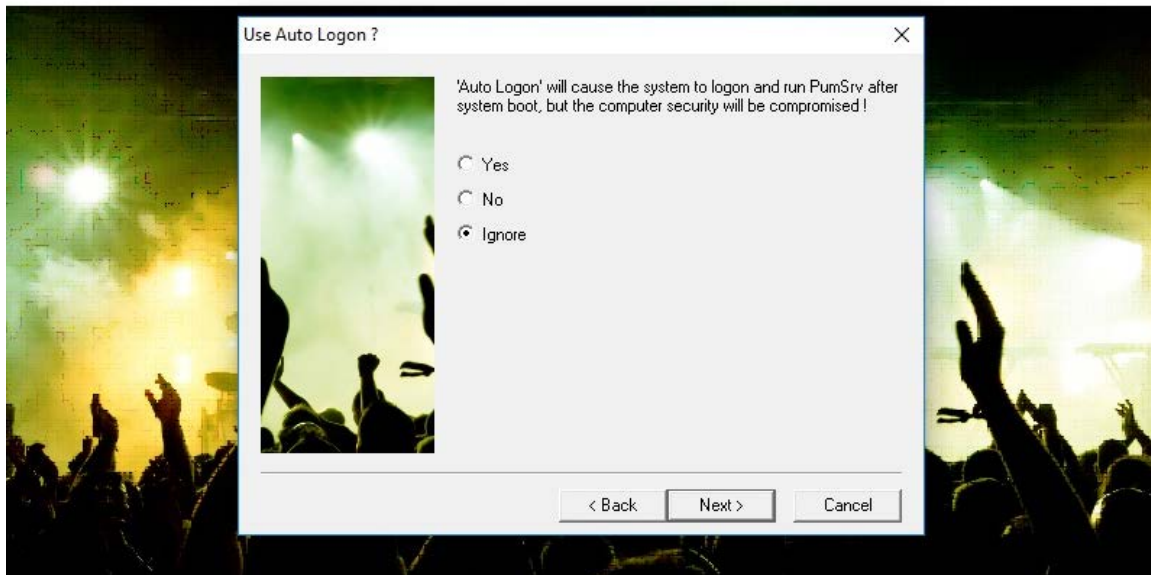
Enter the POS No:

ENCOR WinPOS Installation
Version: 1.0.1.3



Select **Ignore** at the Use Auto Logon prompt

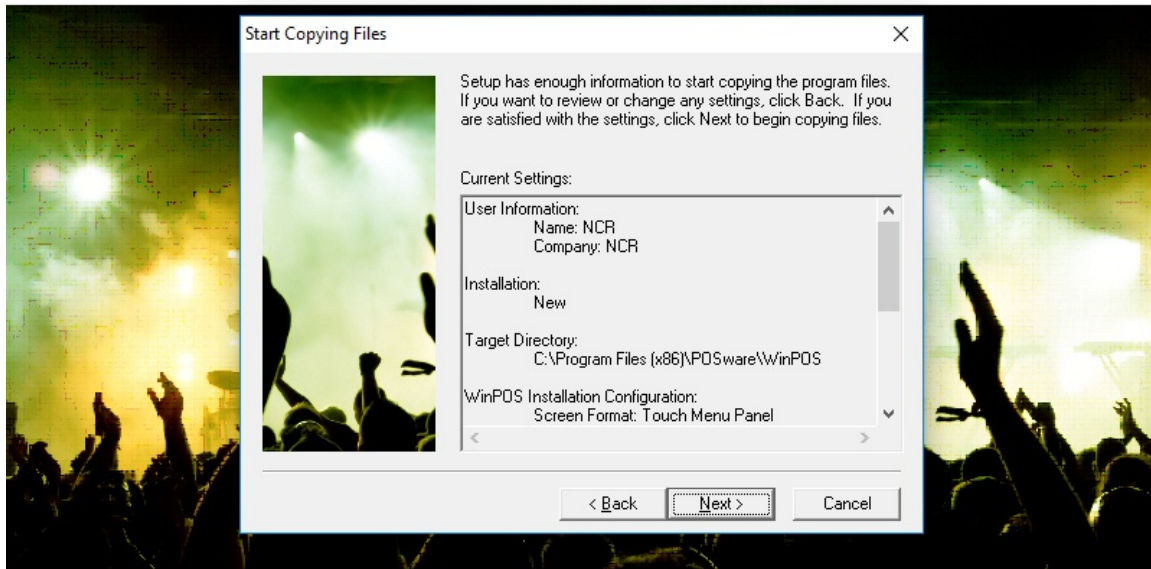
ENCOR WinPOS Installation
Version: 1.0.1.3



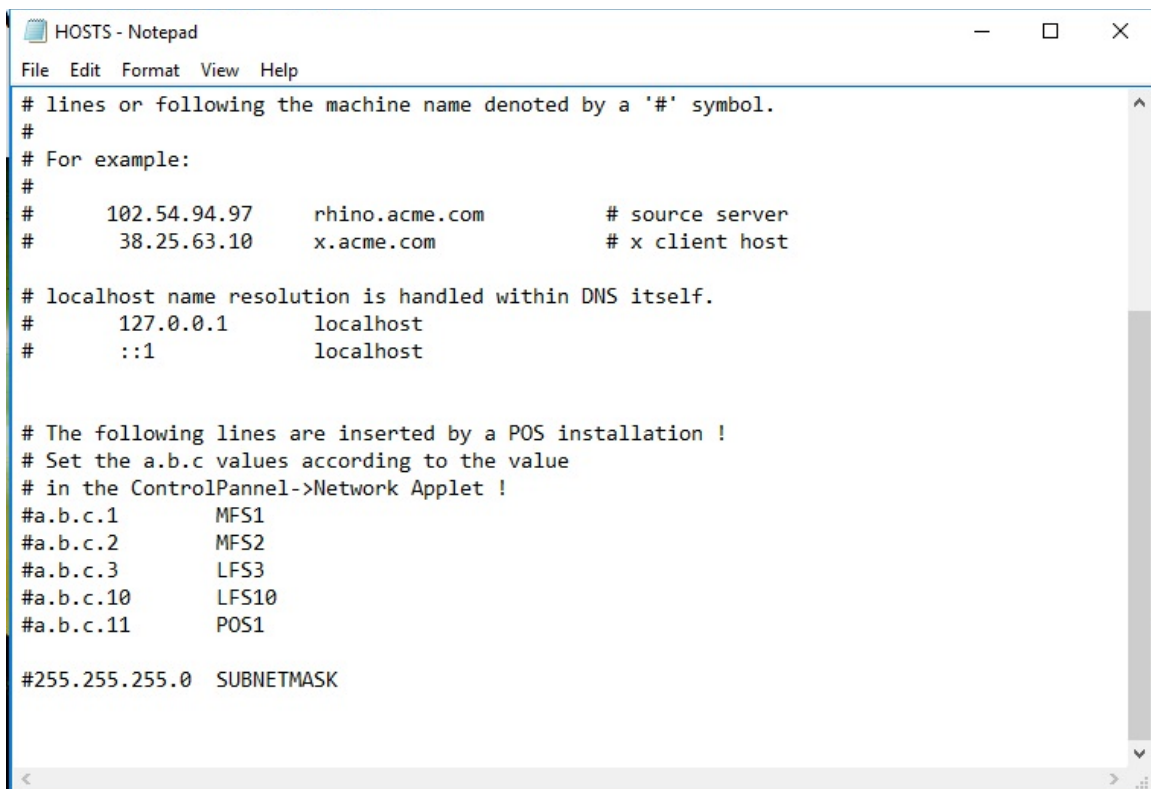
Installing ENCOR on the NCR XR8 (7607) using Windows 10 IoT

Select **Next** to Start Copying Files

ENCOR WinPOS Installation ***Version: 1.0.1.3***



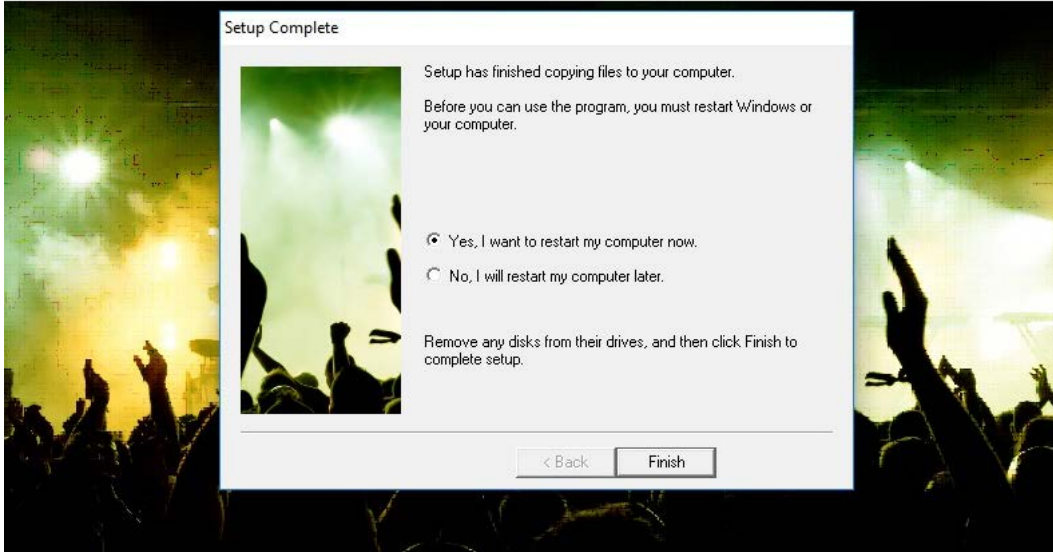
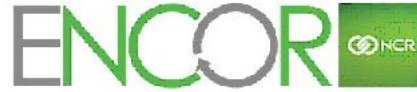
Edit the Host file



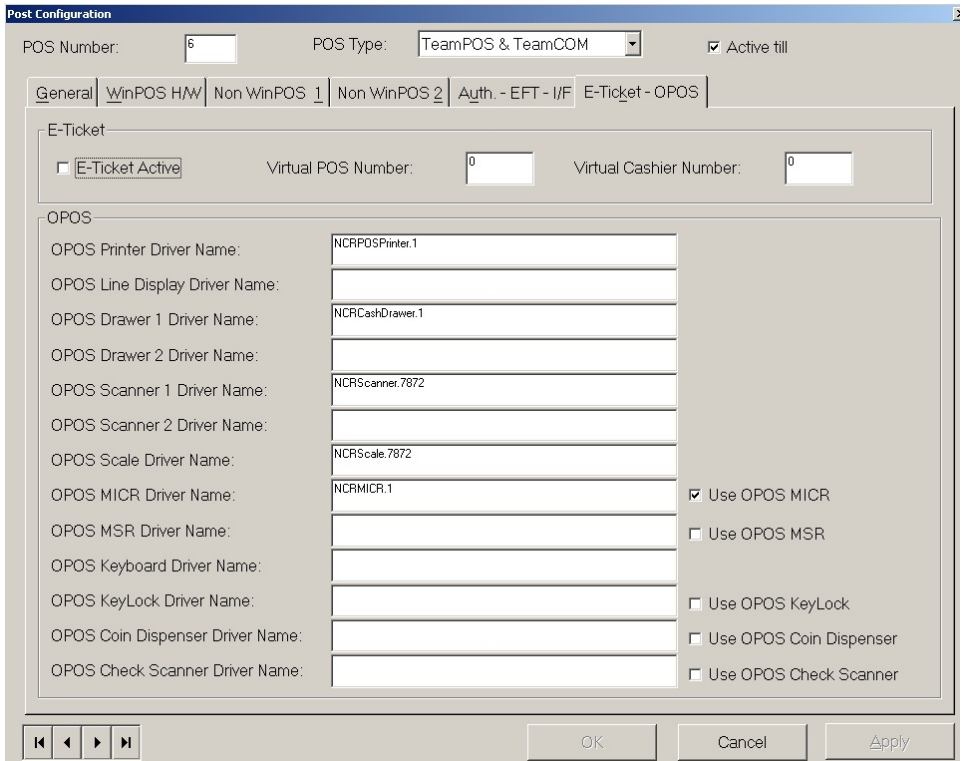
Installing ENCOR on the NCR XR8 (7607) using Windows 10 IoT

Select **Finish** to complete the install

ENCOR WinPOS Installation Version: 1.0.1.3



Depending on the installed devices, setup the following OPOS devices in the FrontOffice POS Configuration. If using the Epson TM-H6000IIIU/IVU then install the Epson OPOS using the ADK268E.exe and set it to be TM-H6000IIIU for the Printer and the MICR:



Installing ENCOR on the NCR XR8 (7607) using Windows 10 IoT

At this time, Connected Payments can be installed.

Note: Due to the reduction of the Administrator Privileges, the OpenEPS folder may be populating in the following directory:

C:\Users\NCR\AppData\Local\VirtualStore\Program Files\MicroTrax\OpenEPS

Additional setup information:

Adding Users to proper Windows Groups (admin user rights required)

- Navigate to Computer Management (Control Panel > Administrative Tools).
- Under Local Users and Groups, Select Users.
- Double click a user to display the User's Properties.
- In the Member Of tab, please make sure all users that are not assigned to the Administrators group are added to the ENCORUSERS group.
- Click Ok.

NOTE: For more secure system

At this time a Non-Admin user can be created

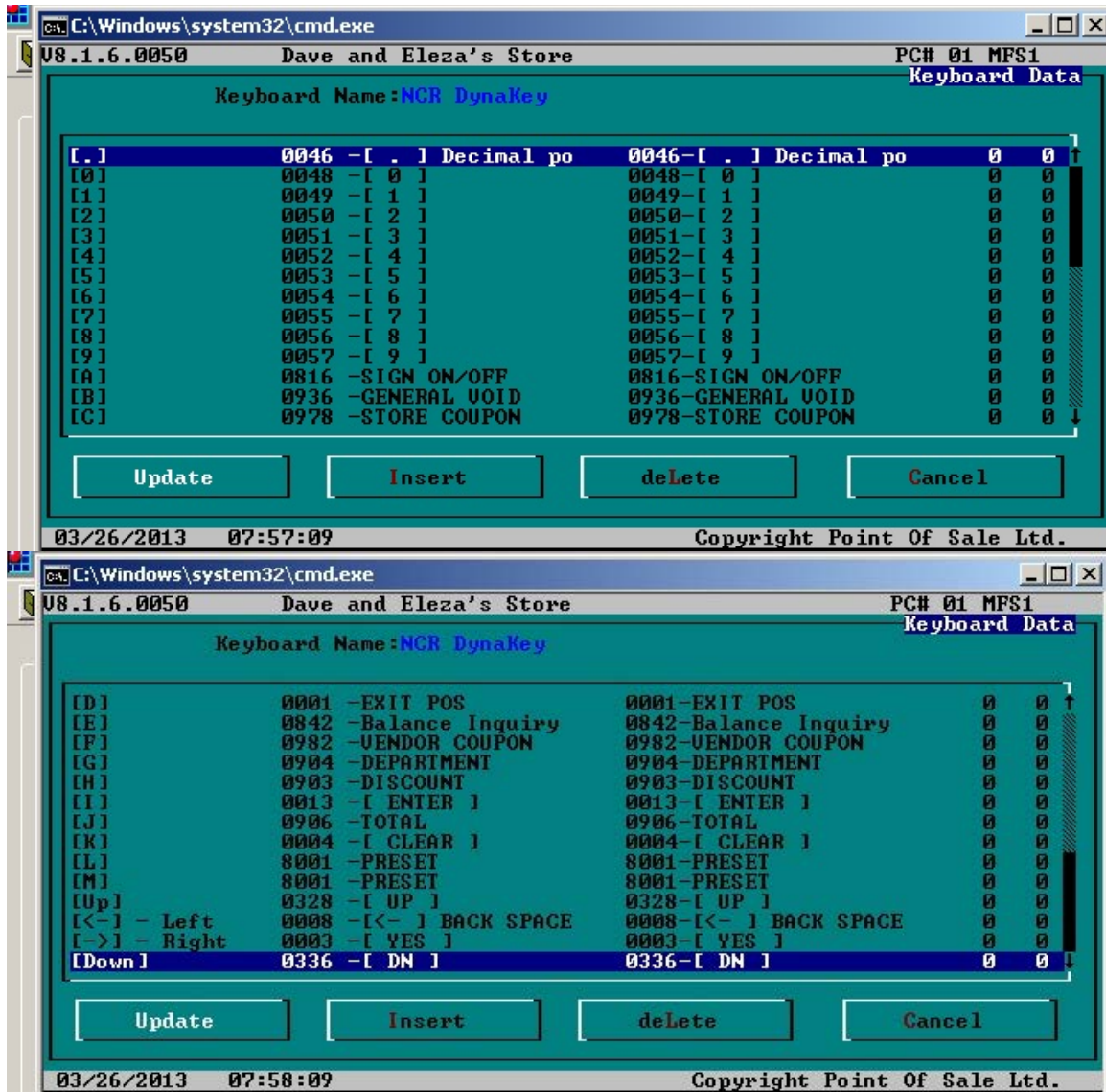
For security reasons, you may want to delete the NCR users.

Printers – set or build appropriate templates for check writing.

Menusys.mac – a Sample_Dynakey_menusys.mac file is included in the website download for ENCOR. This is intended as an example of how some of the Dynakeys are setup and is not a full implementation. It is up to the Dealers to setup the menusys.mac file to meet the customer's requirements.

Keyboard programming – It is also the Dealers responsibility to map the non-Dynakeys to the appropriate functions. Following is a sample of how the certification keyboard was programmed to match the installed Dynakey mapping.

Installing ENCOR on the NCR XR8 (7607) using Windows 10 IoT



The 8 Dynakeys are mapped as LShift- F1 thru LShift F8 and ARE NOT to be setup in the above keyboard programming.

FrontOffice POS Configuration settings for Dynakey registers:

Setup a keyboard type for the NCR Dynakey and assign that keyboard number in the POS Configuration General Tab. On the WinPOS H/W Tab, set the keyboard type to Dynakey non-OPOS. If using a touch Dynakey, set the Touch Screen type to None on the Non WinPOS 1 tab.

In the WinPOS.ini file check/set:

TouchPanelRows =8

TouchPanelColumns=1

Installing ENCOR on the NCR XR8 (7607) using Windows 10 IoT

MenuShiftKeys=Yes (Note: if you remap the F1 thru F8 keys to not use a shift this option will need set to No).

IMPORTANT: The Dynakey keyboards ships with the Keylock in the L position disabling the keyboard. Prior to using the Dynakey, put the Keylock in either the R or S position.



Installing ENCOR on the NCR XR8 (7607) using Windows 10 IoT

Following are the scan tags and sequences to program the 78xx scanners. Once the OPOS devices are setup and programmed the POS should be ready for use.

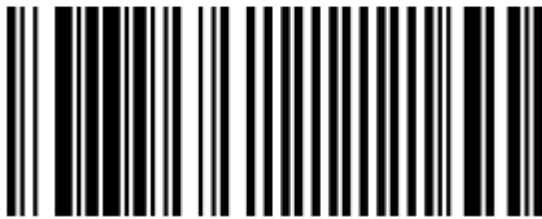
78XX Scanner programming tags:
To Program the 78XX for ENCOR

(Start)

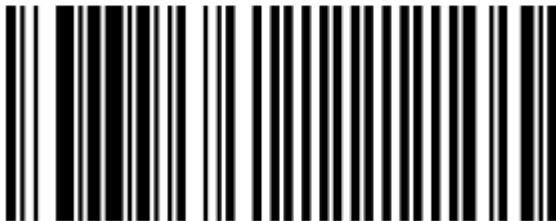
Reset



Default



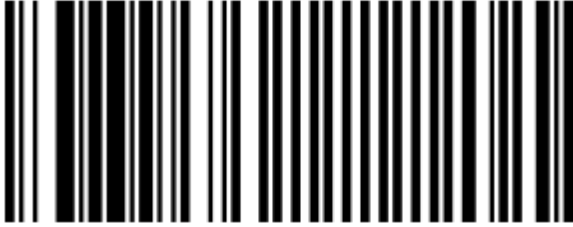
Programming Mode



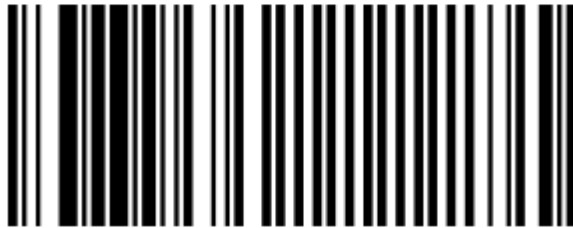
Installing ENCOR on the NCR XR8 (7607) using Windows 10 IoT

(Set to USB Communication Protocol)

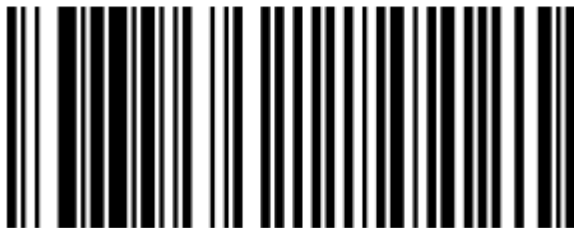
Hex 1



Hex 0



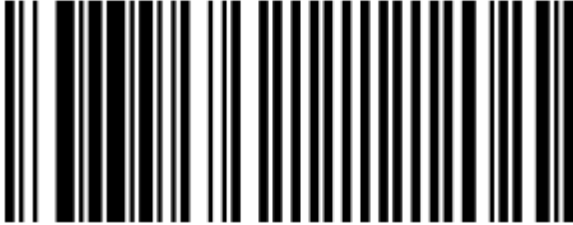
Hex D



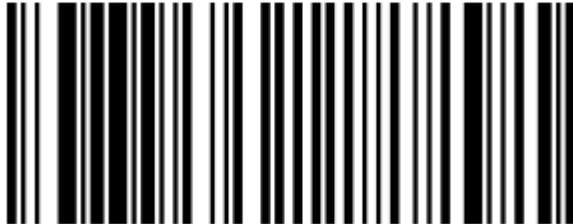
Installing ENCOR on the NCR XR8 (7607) using Windows 10 IoT

(Enable periodical codes)

Hex 1



Hex 3

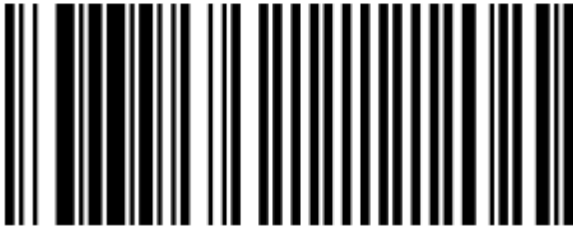


Hex E

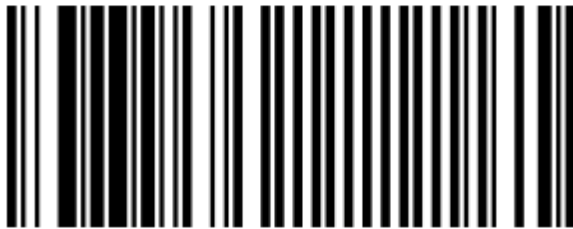


Installing ENCOR on the NCR XR8 (7607) using Windows 10 IoT

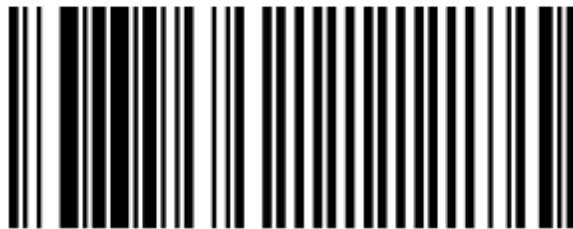
Hex 1



Hex 2



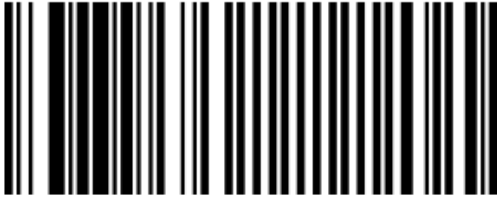
Hex 0



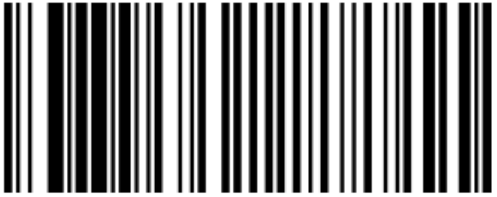
Installing ENCOR on the NCR XR8 (7607) using Windows 10 IoT

(Enable Code 128)

Hex 1



Hex 7



Hex A



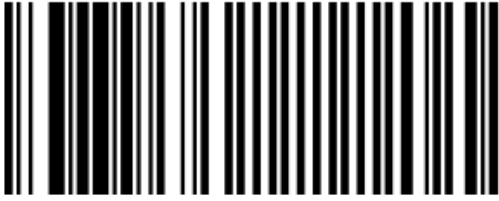
Hex 1



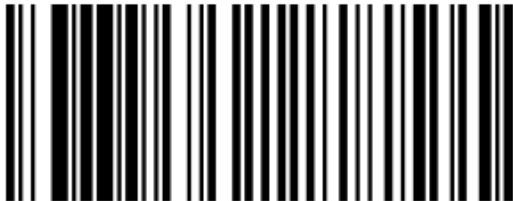
Installing ENCOR on the NCR XR8 (7607) using Windows 10 IoT

(Enable DataBar)

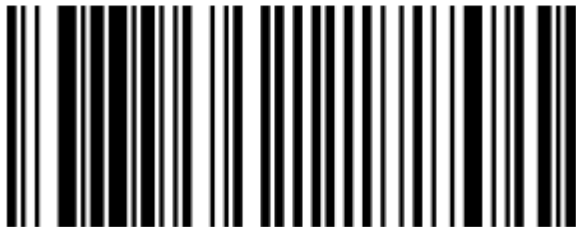
Hex 1



Hex 8



Hex A



Hex 3



Installing ENCOR on the NCR XR8 (7607) using Windows 10 IoT

(Finish)

Save and Reset





© NCR Corporation, 2019

NCR endeavors to ensure that the information in this document is correct and fairly stated but does not accept liability for any error or omission.

The development of NCR products and services is continuous and published information may not be up to date. It is important to check the current position with NCR. This document is not part of a contract or license, save insofar as may be expressly agreed.

NCR Corporation
864 Spring Street
Atlanta, GA 30308

P/N 89000945
PIN 45002/092