

ENCOR

- Platform Setup Guide,
- Microsoft SQL 2014 Express
- on Existing MFS
- Version 1.0.1.3
-



ENCOR Platform Setup Guide, Microsoft SQL Express

Date of Issue	Product ID Num.	Part Number	Brief Description
December 2017	45002/074	89000910	1.0.0.0 Release
January 2018	45002/074	89000924	1.0.0.0 Release (Updated)
April 2019	45002/074	89000942	SQL 2014 Express with 1.0.1.3

©Copyright NCR Corporation 1995-2019
All rights reserved

This publication is protected by federal copyright law. This document and its contents are the proprietary, confidential information and property of NCR Corporation ("NCR"). Unauthorized disclosure, reproduction, distribution or use of this document and/or its contents in any form is strictly prohibited. No part of this publication may be reproduced or transmitted into any human or computer language in any form or by any means, stored in a retrieval system, transmitted, redistributed, translated or disclosed to third parties, or de-compiled in any way including, but not limited to, photocopy, photograph, electronic, mechanical, magnetic or manual without the express written permission of NCR or its licensors, if any. This document, notwithstanding the above, may be distributed in electronic or printed form by NCR to personnel who are employed by either (a) a licensee and end user of the subject system of this document or (b) personnel from an authorized NCR Channel Partner or Solution Provider of the subject system of this document. All copies of this document so distributed and/or so authorized, shall contain a full copy of this copyright notice.

NCR has prepared this document as a guide to the proper installation, operation, customization and/or maintenance of NCR products. The drawings and specifications contained herein are the property of NCR and/or its licensors.

NCR endeavors to ensure that the information in this document is correct and fairly stated but does not accept liability for any error or omission. NCR makes no representation or warranties with respect to the contents hereof, and specifically disclaims any implied warranties of merchantability or fitness for a particular purpose or non-infringement. No commitments by NCR or its suppliers are made by or from this documentation which is provided for information only.

Development of NCR products and documentation is continuous: NCR reserves the right to revise this publication and to make changes at any time to the contents hereof or to the products herein described or discussed without notice and without any obligation for NCR to notify any person or organization of such revision or changes. Information published in this document will likely be superseded, and it is recommended that users regularly check for updates and newer versions.

The trademarks NCR, Retailix, StoreNext, ENCOR, ISS45, ScanMaster, R10, ACS, PocketOffice, RPO, RBO, ABO, Connected Payments, ServerEPS, Connected Services, Connected Loyalty, WinEPS and all other NCR product names are registered trademarks or trademarks of NCR; all other trademarks or registered trademarks are the property of their respective owners. Third-party products, services, or company names referenced in this document may be trademarked or copyrighted by their respective owners, and are for identification purposes only. Copyrights, trademarks and license agreements shall be governed and construed in accordance with the laws of the State of New York and the Federal Arbitration Act, and shall benefit NCR, its successors, and assigns.

Address comments and corrections regarding this document to:

Attn: Software Program Director
NCR
864 Spring Street
Atlanta, GA 30308

Table of Contents

1	Overview.....	1
2	Disable POS_Srv_Manager Windows Service.....	2
3	Uninstall SQL Server 2008 R2 Instance	3
4	Install SQL Server 2014 Express SP2	6
5	SQL Server Configuration Manager	10
6	Configure User SQL Server 2014 Express R2.....	11



1 Overview

This document guides you through the installation process of SQL Server 2014 on an existing MFS. The process includes the following.

1. Disable the POS_Srv_Manager Windows service.
2. Uninstall SQL Server 2008 R2 Instance.
3. Install SQL Server 2014 Express R2.
4. SQL Server Configuration Manager.
5. Configure User SQL Server 2014 Express R2.

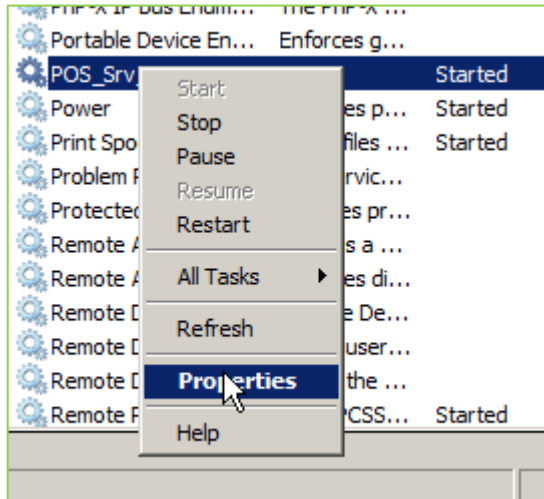
The following are minimum requirements that need to be fulfilled, before beginning the process:

- SQL Server 2008 R2 SP2 or newer
- .Net 3.5 SP1
- .Net 4.0
- 6 GB of available hard-disk space

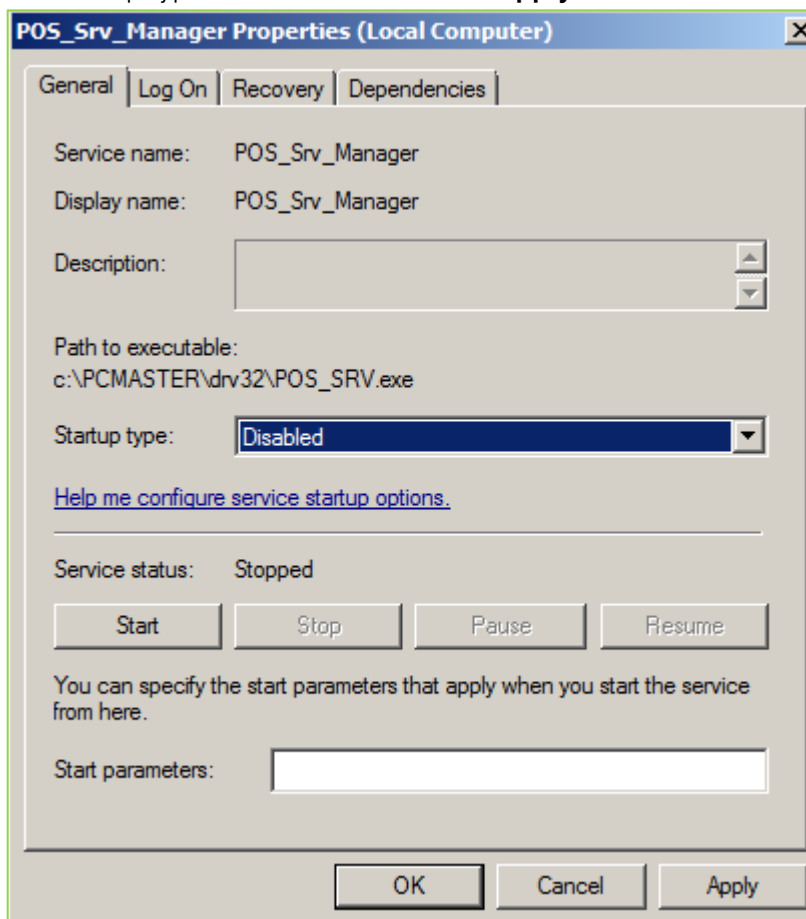


2 Disable POS_Srv_Manager Windows Service

1. Open **Run** in Windows, enter **services.msc** and click **OK**.
2. Right-click **POS_Srv_Manager** service and select **Properties**.



3. Click **Stop**.
4. Set Startup type as **Disabled**, then click **Apply > OK**.

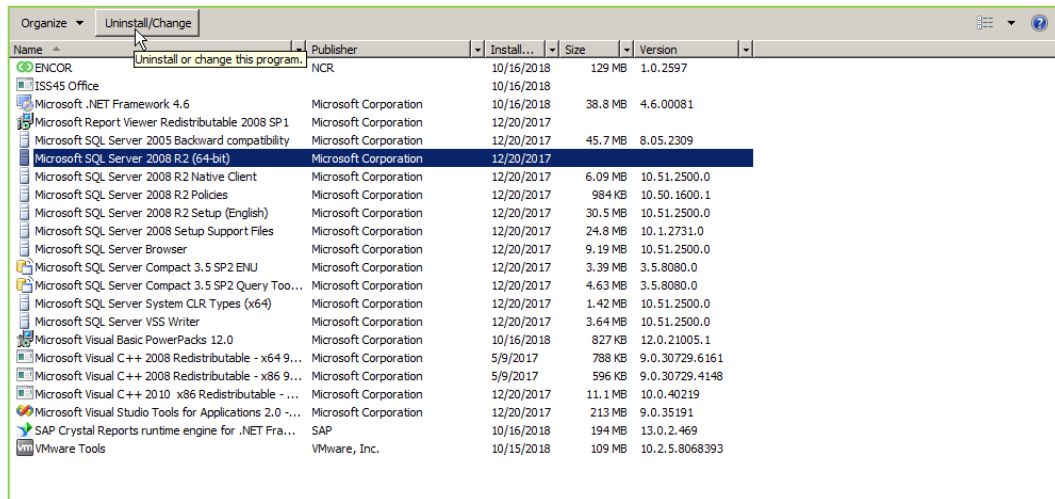


5. Close the Windows Services console.



3 Uninstall SQL Server 2008 R2 Instance

1. Open Windows Program and Features.
2. Select **Microsoft SQL Server 2008 R2** from the list.
3. Click **Uninstall/Change**.



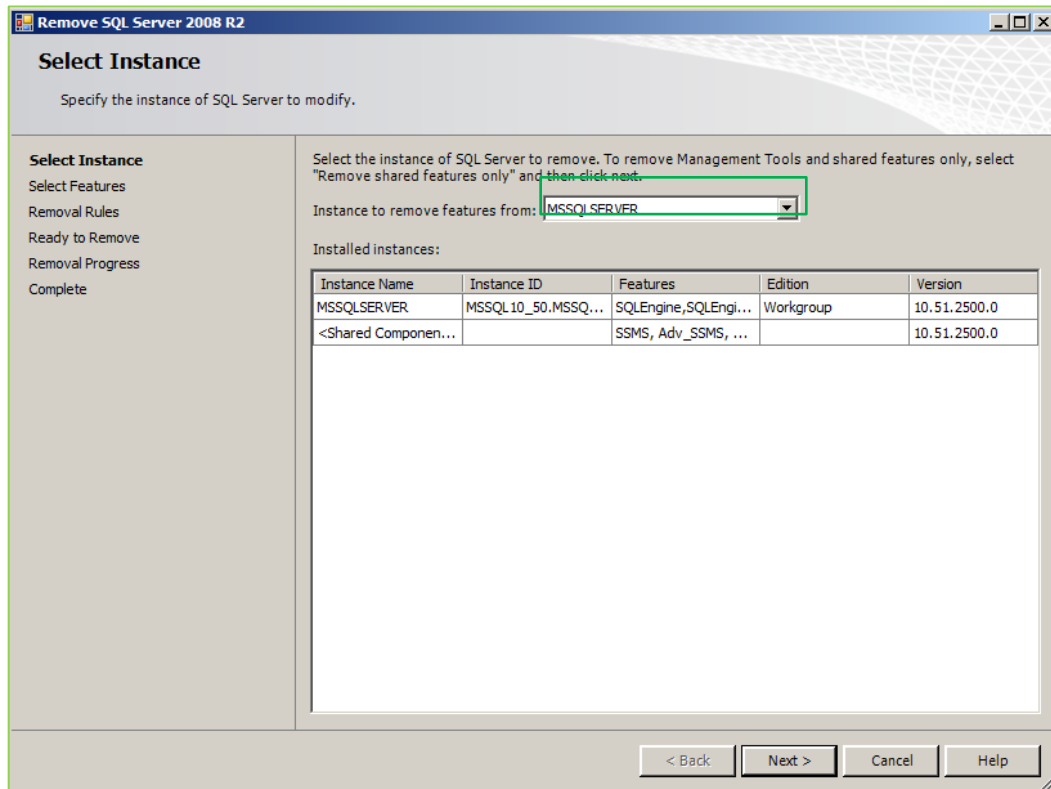
4. Click **Remove**.



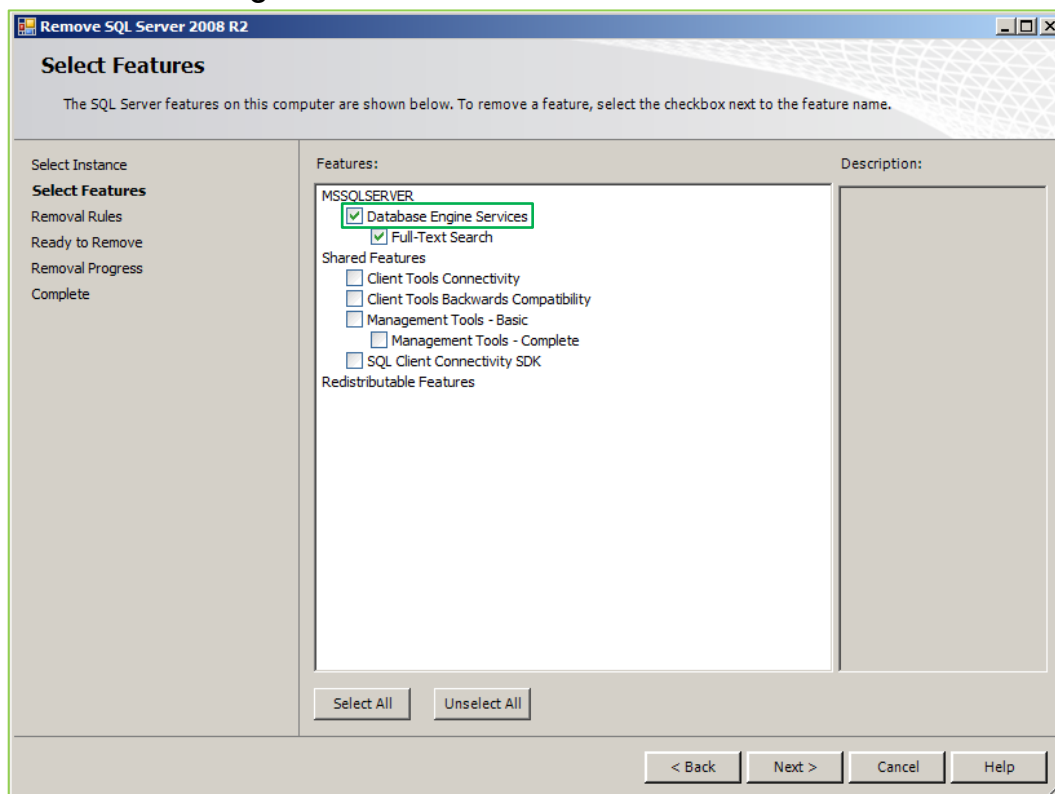
5. Click **OK** on Setup Support Rules screen.



- On Select Instance screen, set *Instance to remove features from:* as **MSSQLSERVER** and click **Next**.



- Check **Database Engine Services** and click **Next**.



- On Removal Rules screen, click **Next**.
- On the Ready to Remove screen, click **Remove**.
- On Complete screen, click **Close**.



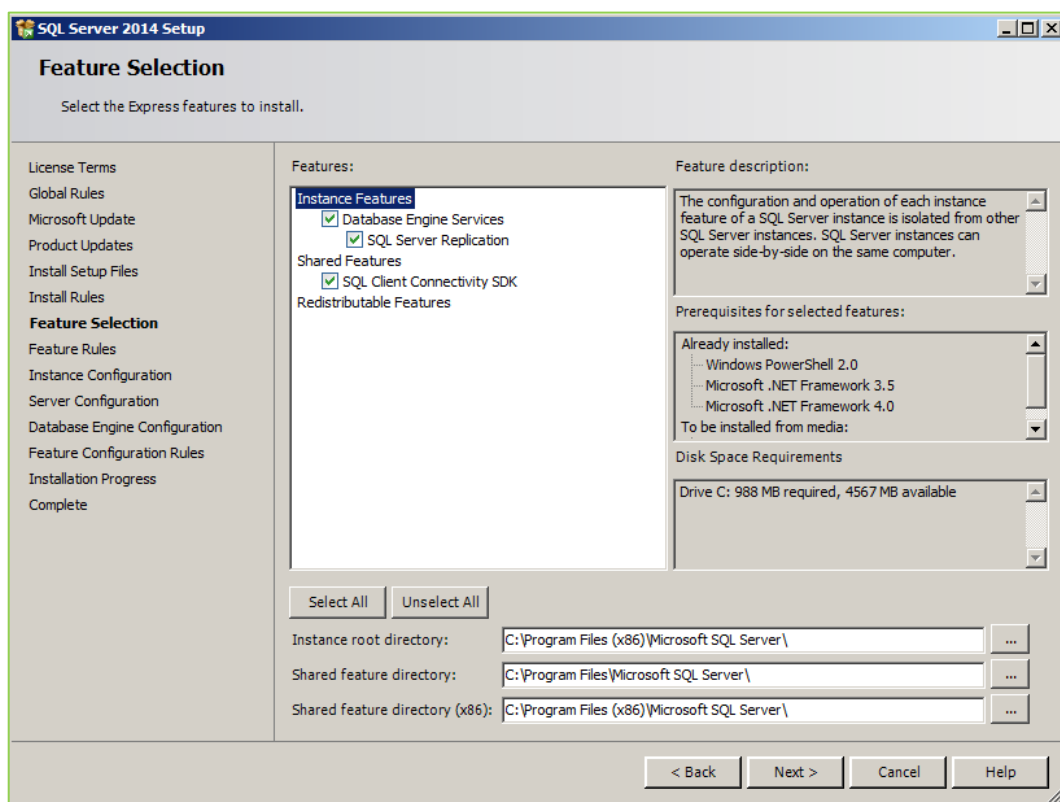
11. System reboot is not required. Once this process is completed, user can start the installation process.



4 Install SQL Server 2014 Express SP2

Before running the installer, please make sure that the system is connected to the internet.

1. Run SQL Server 2014 Express SP2 installer.
2. Select **New SQL Server stand-alone installation or add features to an existing installation** on the Installation screen of the Installation Center.
3. Check **I accept the license terms** and click **Next**.
4. On Global Rules screen, click **Next**.
5. On Microsoft Update screen, click **Next**.
6. On Product Updates screen, click **Next**.
7. Use the default selections on Feature Selection screen and click **Next**.



8. Select **Default instance** and click **Next**.

SQL Server 2014 Setup

Instance Configuration

Specify the name and instance ID for the instance of SQL Server. Instance ID becomes part of the installation path.

License Terms
Global Rules
Microsoft Update
Product Updates
Install Setup Files
Install Rules
Feature Selection
Feature Rules
Instance Configuration
Server Configuration
Database Engine Configuration
Feature Configuration Rules
Installation Progress
Complete

Default instance
 Named instance: MSSQLSERVER

Instance ID: MSSQLSERVER

SQL Server directory: C:\Program Files (x86)\Microsoft SQL Server\MSSQL12.MSSQLSERVER

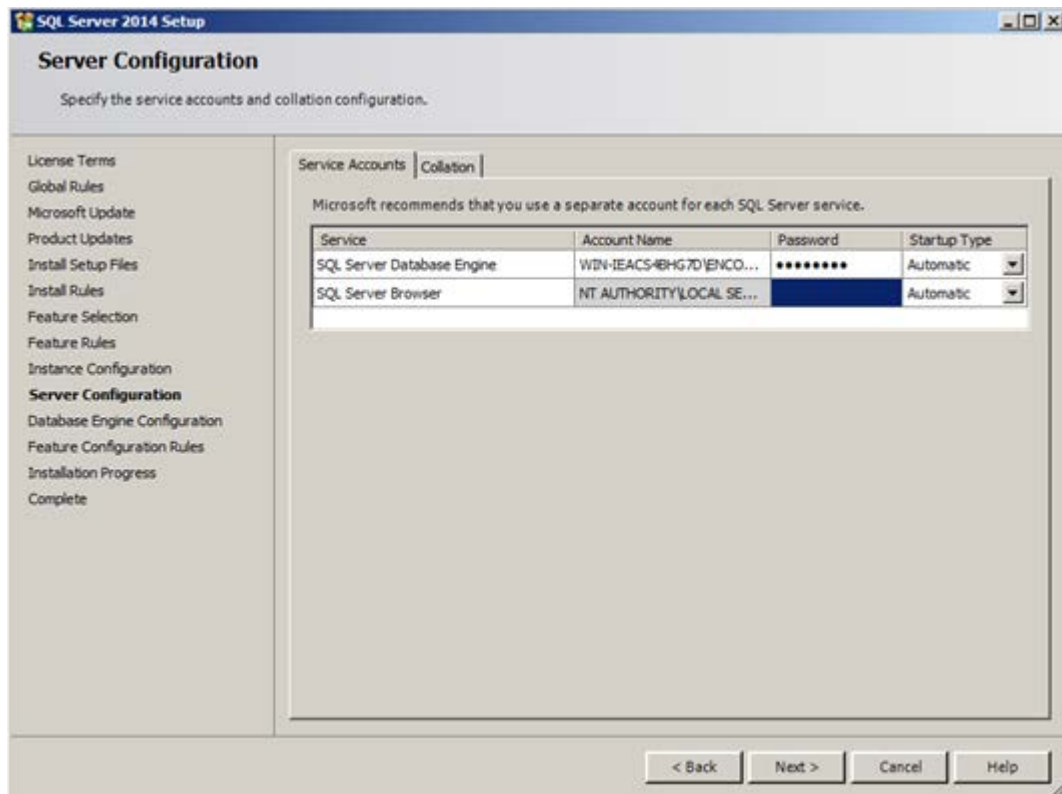
Installed instances:

Instance Name	Instance ID	Features	Edition	Version
<Shared Component...		SSMS, Adv_SSMS, C...		10.51.2500.0

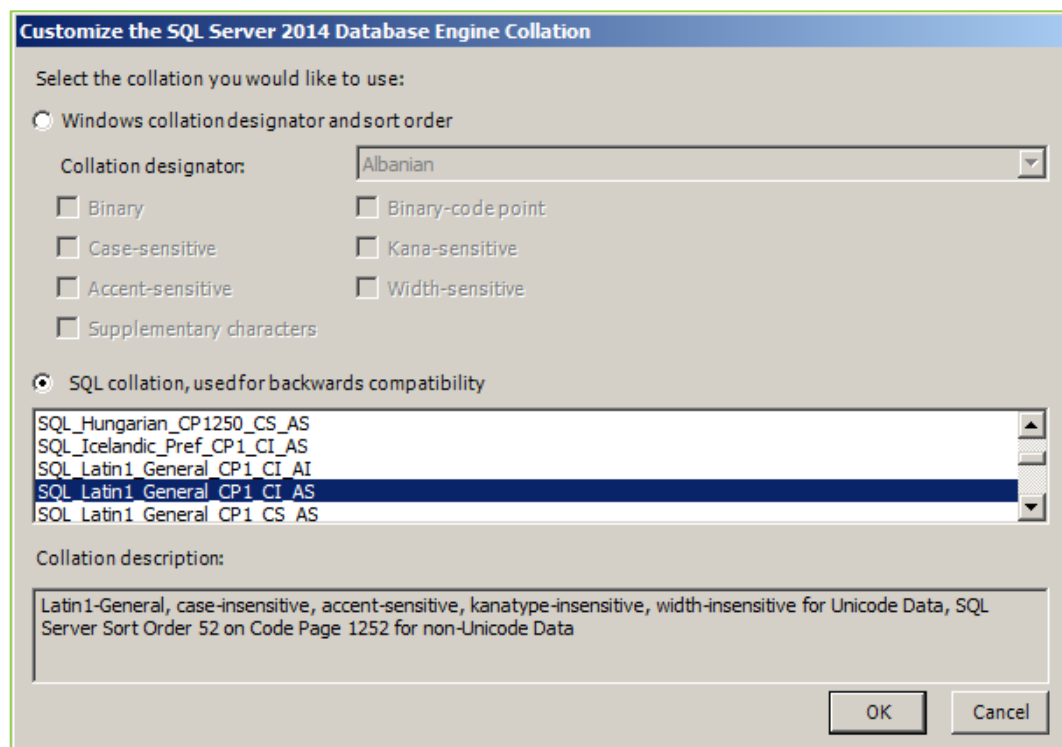
< Back Next > Cancel Help

9. On **Server Configuration > Service Accounts** tab, set SQL Server Browser service Startup Type to **Automatic**. Change the **Account Name** and **Password** to the same Windows User that will be used for the RSM Service during the ENCOR installation. This user needs to belong to the **Windows Administrators** group. In the example below the ENCOR User account is used and the password is entered.





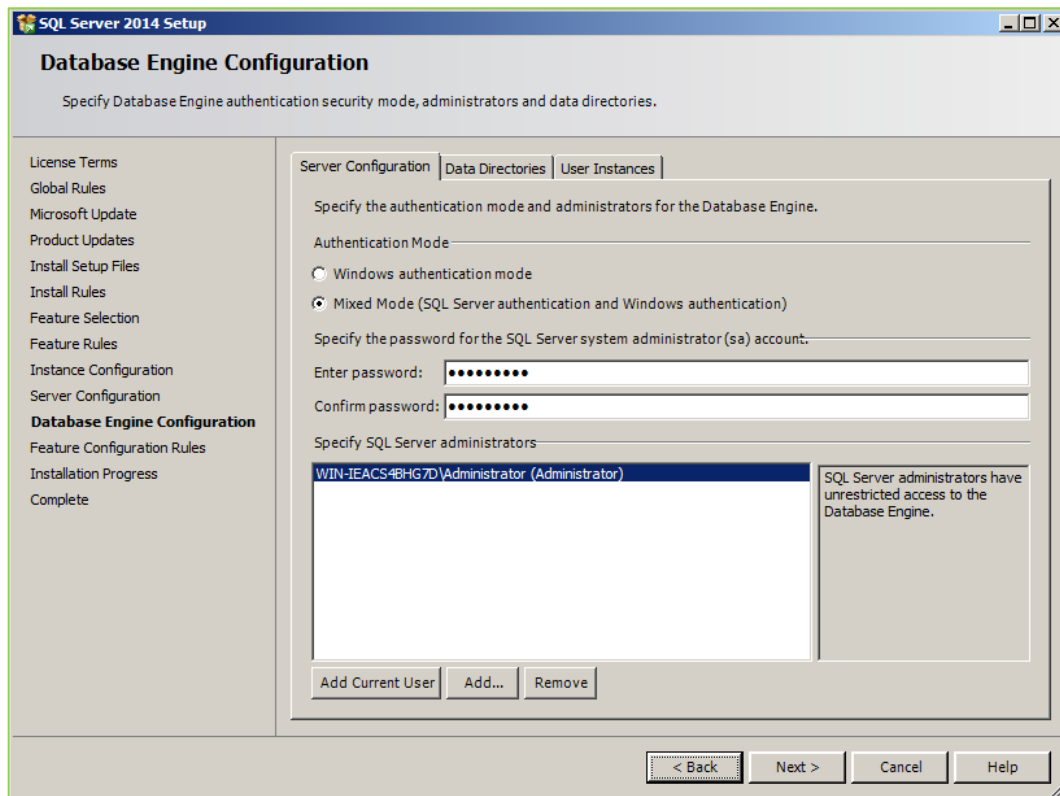
10. On **Server Configuration > Collation** tab, set collation to **SQL_Latin1_General_CP1_CI_AS**.



11. Click **Next** on Server Configuration screen.
12. On Database Engine Configuration screen, select **Mixed Mode** and enter the previous (sa) password that was used for the SQL Server 2008



R2 MSSQLSERVER database instance.



13. Click **Next**.

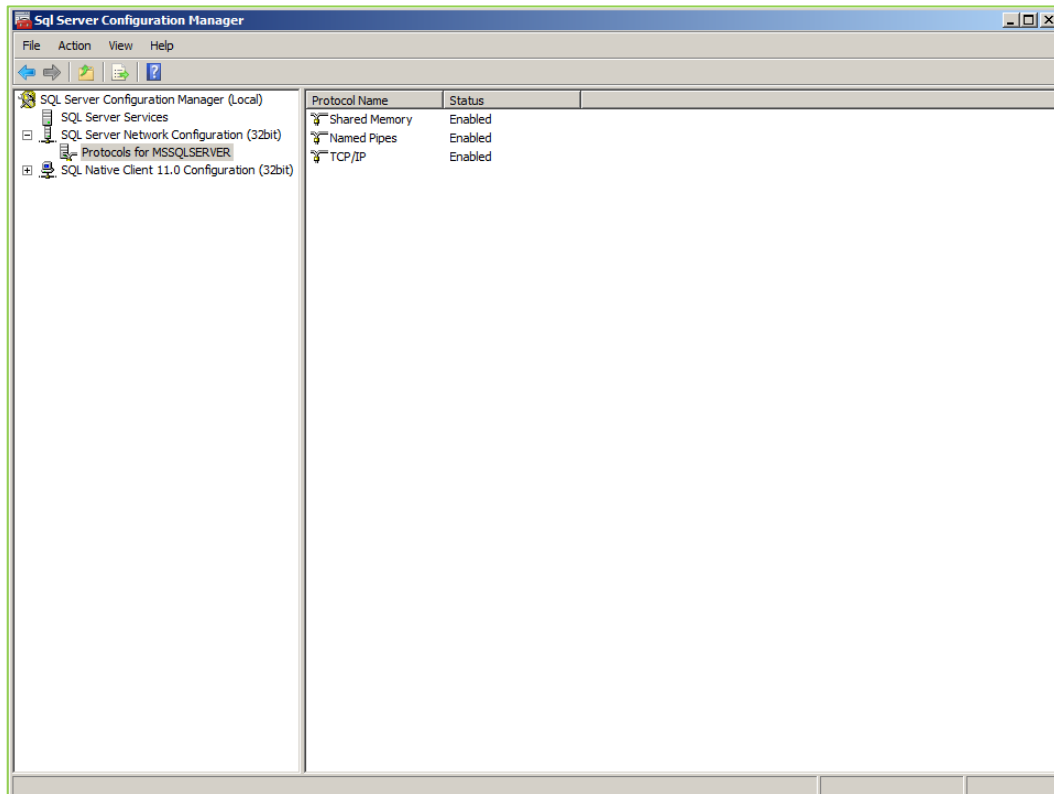
14. Click **Close**.

Once the SQL Server 2014 Express SP2 installation completes, proceed to the SQL Server Configuration Manager.



5 SQL Server Configuration Manager

1. Go to **Start > All Programs** menu > **Microsoft SQL Server 2014 > Configuration Tools > SQL Server 2014 Configuration Manager**.
2. Expand **SQL Server Network Configuration (32bit)** in left panel and select **Protocols for MSSQLSERVER**.
3. Right-click **Named Pipes** protocol, select **Enable**, and click **OK**.
4. Right-click **TCP/IP** protocol, select **Enable**, and click **OK**.

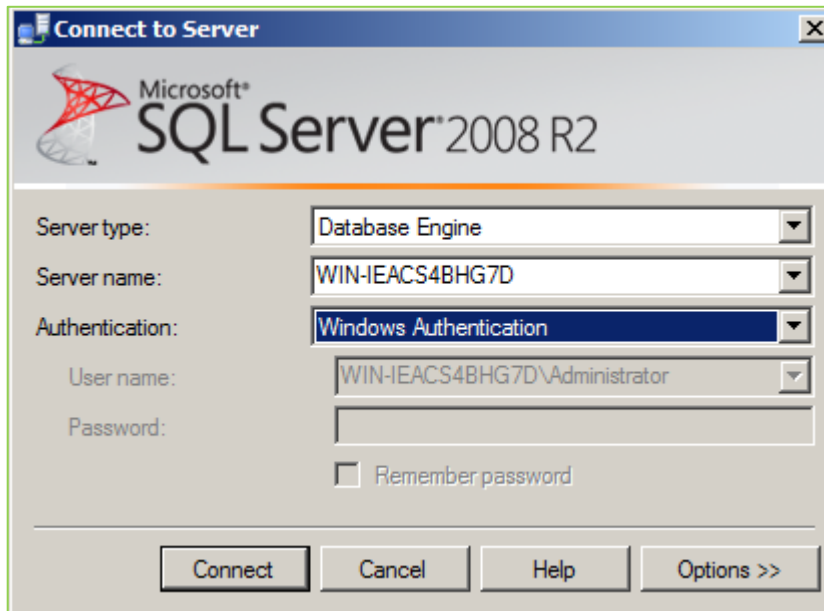


5. Close SQL Server Configuration Manager.
6. Continue to the Configure SQL Server 2014 Express R2 selection of the document.

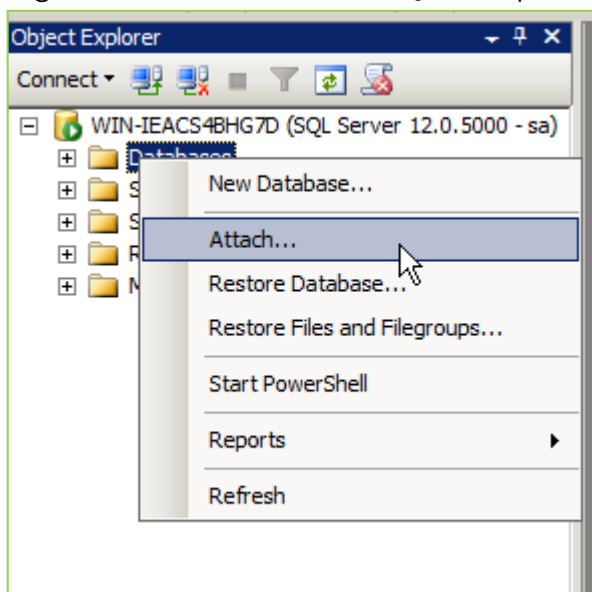


6 Configure User SQL Server 2014 Express R2

1. Open **SQL Server 2008 R2 SQL Server Management Studio**.
2. Select **Windows Authentication** from the Authentication drop down and click **Connect**.



3. Right-click **Databases** in Object Explorer and select **Attach...**



4. Click **Add**.
5. Add **FrontOff.mdf**, **ENCOR.mdf**, **ENCORTransaction.mdf**, **ENCORService.mdf** and **ABO.mdf**.
 - a. By default, the FrontOff.mdf is in the C:\MSSQL\Data directory.
By default, the ENCOR and ABO .mdf files are in the C:\NCR\ENCOR\Data directory.
6. Click **OK**.



7. Execute the spRunAfterRestore for all databases that were attached using SSMS. Using the following script...

```
use <databasename>  
exec spRunAfterRestore
```

8. Set the POS_Srv_Manager Windows service back to automatic for the Startup type (do not start the service) and reboot the machine.





© NCR Corporation, 2019

NCR endeavors to ensure that the information in this document is correct and fairly stated but does not accept liability for any error or omission.

The development of NCR products and services is continuous and published information may not be up to date. It is important to check the current position with NCR. This document is not part of a contract or license, save insofar as may be expressly agreed.

NCR Corporation
864 Spring Street
Atlanta, GA 30308

P/N 89000942
PIN 45002/074