

ENCOR

- Platform Setup Guide,
■ Microsoft SQL 2017 Express
■ on Existing MFS
■ Version 1.0.1.3
■



ENCOR Platform Setup Guide, Microsoft SQL Express

Date of Issue	Product ID Num.	Part Number	Brief Description
December 2017	45002/074	89000910	1.0.0.0 Release
January 2018	45002/074	89000924	1.0.0.0 Release (Updated)
April 2018	45002/074	89000942	SQL 2014 Express with 1.0.0.3
April 2019	45002/074	89000943	SQL 2017 Express with 1.0.1.3

©Copyright NCR Corporation 1995-2019
All rights reserved

This publication is protected by federal copyright law. This document and its contents are the proprietary, confidential information and property of NCR Corporation ("NCR"). Unauthorized disclosure, reproduction, distribution or use of this document and/or its contents in any form is strictly prohibited. No part of this publication may be reproduced or transmitted into any human or computer language in any form or by any means, stored in a retrieval system, transmitted, redistributed, translated or disclosed to third parties, or de-compiled in any way including, but not limited to, photocopy, photograph, electronic, mechanical, magnetic or manual without the express written permission of NCR or its licensors, if any. This document, notwithstanding the above, may be distributed in electronic or printed form by NCR to personnel who are employed by either (a) a licensee and end user of the subject system of this document or (b) personnel from an authorized NCR Channel Partner or Solution Provider of the subject system of this document. All copies of this document so distributed and/or so authorized, shall contain a full copy of this copyright notice.

NCR has prepared this document as a guide to the proper installation, operation, customization and/or maintenance of NCR products. The drawings and specifications contained herein are the property of NCR and/or its licensors.

NCR endeavors to ensure that the information in this document is correct and fairly stated but does not accept liability for any error or omission. NCR makes no representation or warranties with respect to the contents hereof, and specifically disclaims any implied warranties of merchantability or fitness for a particular purpose or non-infringement. No commitments by NCR or its suppliers are made by or from this documentation which is provided for information only.

Development of NCR products and documentation is continuous: NCR reserves the right to revise this publication and to make changes at any time to the contents hereof or to the products herein described or discussed without notice and without any obligation for NCR to notify any person or organization of such revision or changes. Information published in this document will likely be superseded, and it is recommended that users regularly check for updates and newer versions.

The trademarks NCR, Retailix, StoreNext, ENCOR, ISS45, ScanMaster, R10, ACS, PocketOffice, RPO, RBO, ABO, Connected Payments, ServerEPS, Connected Services, Connected Loyalty, WinEPS and all other NCR product names are registered trademarks or trademarks of NCR; all other trademarks or registered trademarks are the property of their respective owners. Third-party products, services, or company names referenced in this document may be trademarked or copyrighted by their respective owners, and are for identification purposes only. Copyrights, trademarks and license agreements shall be governed and construed in accordance with the laws of the State of New York and the Federal Arbitration Act, and shall benefit NCR, its successors, and assigns.

Address comments and corrections regarding this document to:

Attn: Software Program Director
NCR
864 Spring Street
Atlanta, GA 30308

Table of Contents

1	Overview.....	1
2	Disable POS_Srv_Manager Windows service	2
3	Uninstall Previous MSSQLSERVER SQL Server Instance	3
4	Installing SQL Server 2017 Express	6
5	SQL Server Configuration Manager.....	10
6	Configure User SQL Server 2017	11



1 Overview

This document guides you through the installation process of SQL Server 2017 on an existing MFS. The process includes the following.

1. Disable the POS_Srv_Manager Windows service.
2. Uninstall previous MSSQLSERVER SQL Server instance.
3. Install SQL Server 2017 express.
4. SQL Server configuration manager.
5. Configure User SQL Server 2017.

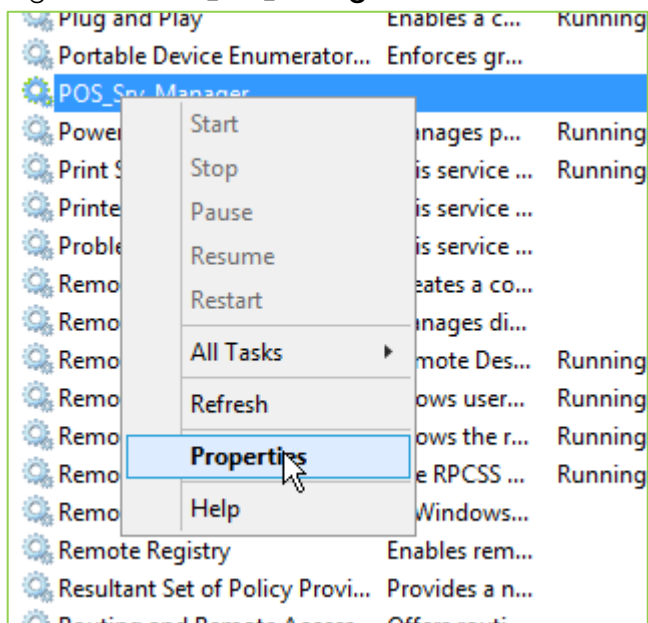
The following are minimum requirements before beginning the upgrade process:

- SQL Server 2008 SP4 or newer
- SQL Server 2008 R2 SP3 or newer
- SQL Server 2012 SP2 or newer
- SQL Server 2014
- SQL Server 2016
- Windows Server 2012 or newer
- .Net 4.6
- 6 GB of available hard-disk space

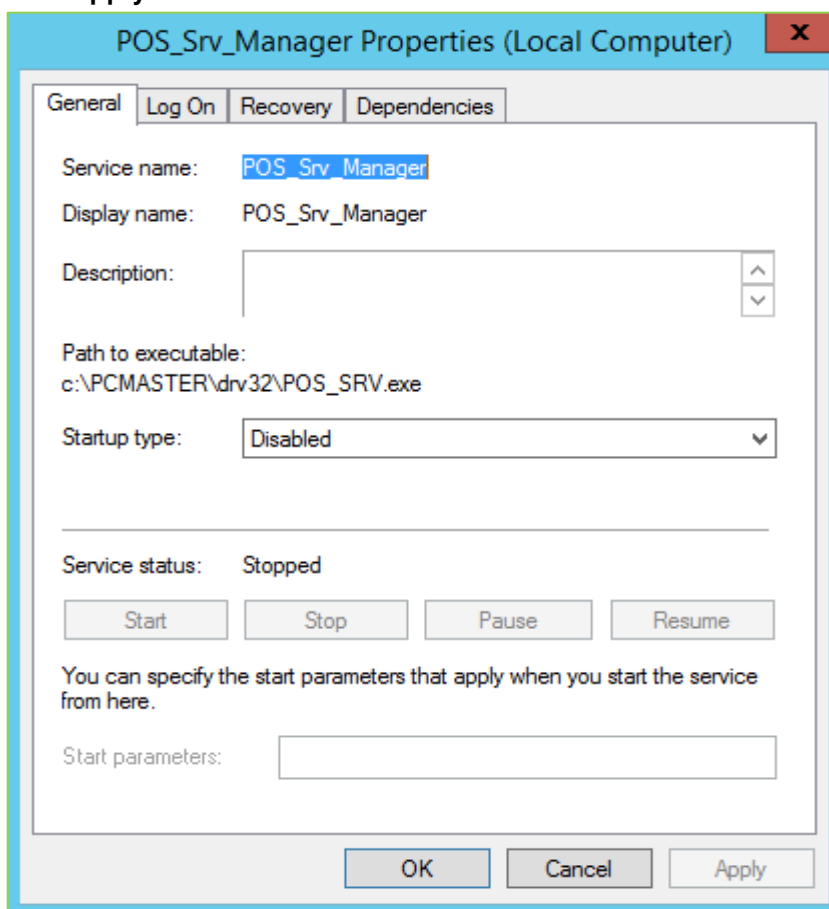


2 Disable POS_Srv_Manager Windows service

1. Open **Run** in Windows, enter **services.msc** and click **OK**.
2. Right-click **POS_Srv_Manager** service and select **Properties**.



3. Click **Stop**.
4. Use the Startup type drop down to set the service to **Disabled**.
5. Click **Apply > OK**.

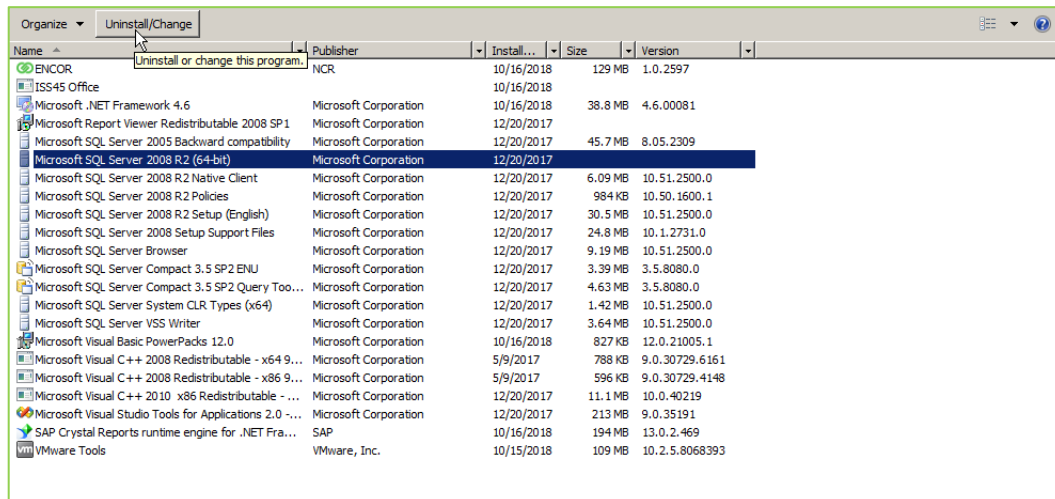


6. Close the Windows Services console.



3 Uninstall Previous MSSQLSERVER SQL Server Instance

1. Open **Windows Program and Features**.
2. Select the previous version of Microsoft SQL Server from the list.
3. Click **Uninstall/Change**.



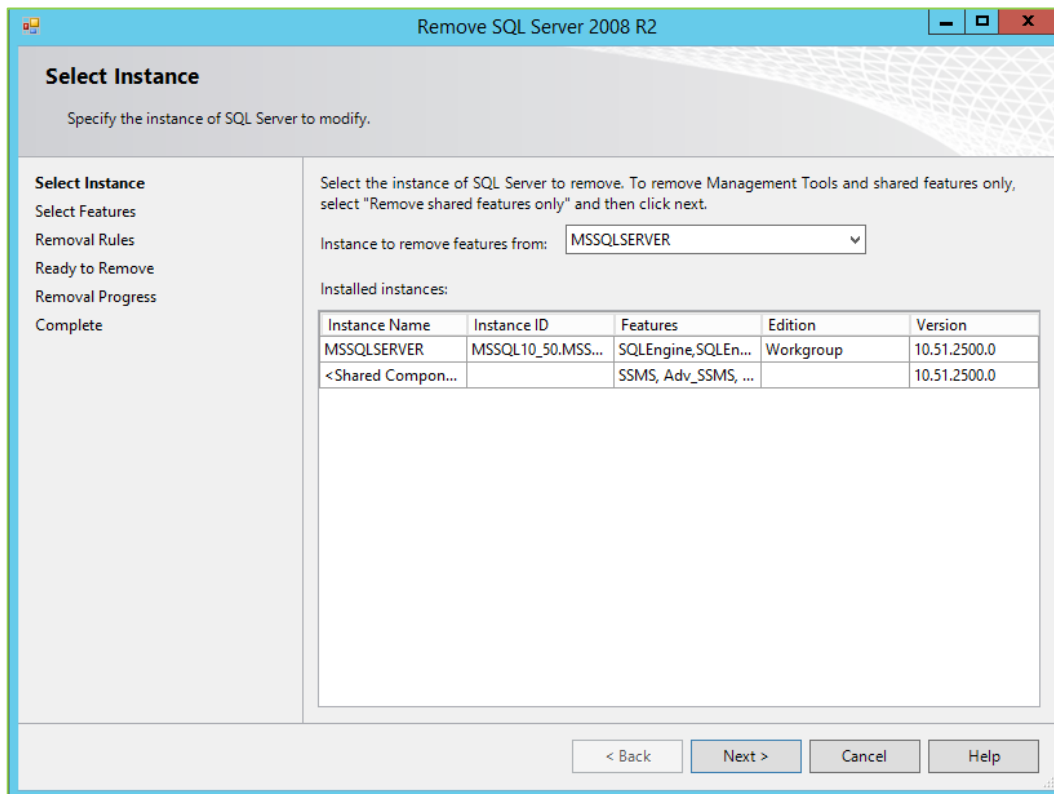
4. Click **Remove**.



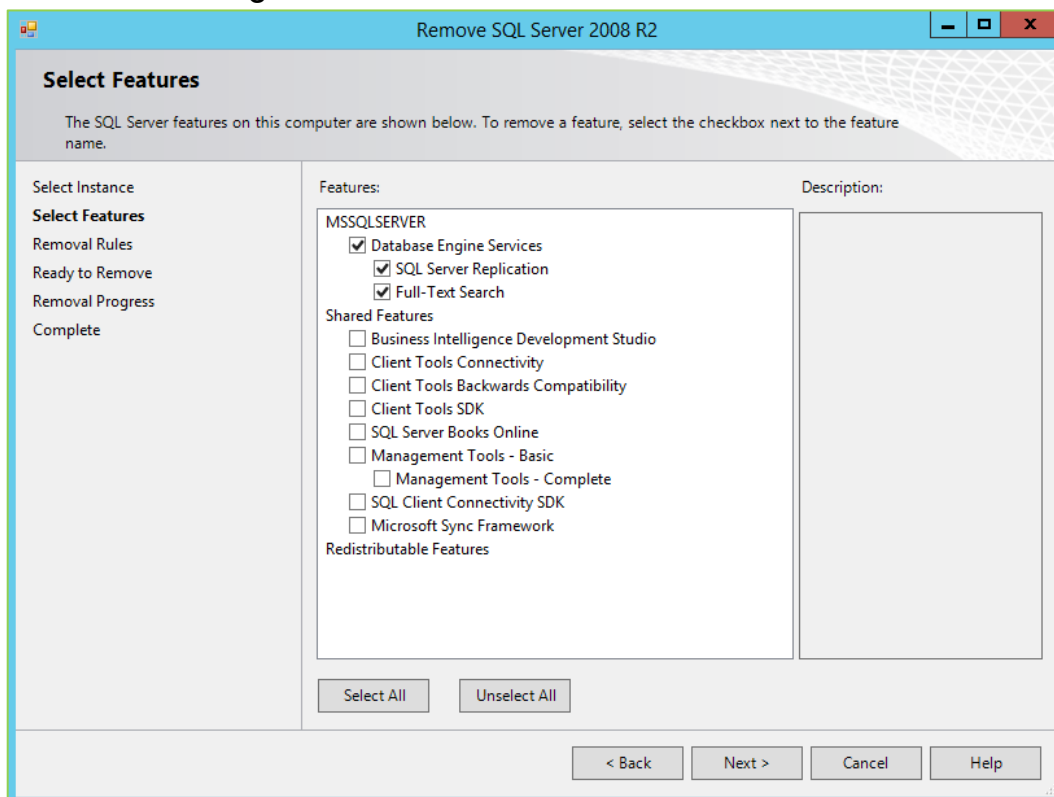
5. Click **OK** on the Setup Support Rules screen.



- On the Select Instance screen, use the Instance to remove features from drop down to select **MSSQLSERVER** and click **Next**.



- Check **Database Engine Services** and click **Next**.



- Click **Next** of the Removal Rules screen.
- Click **Remove** on the Ready to Remove screen.
- Click **Close** on the Complete screen.



Once this process has completed move to the Installing SQL Server 2017 Express section of the document.

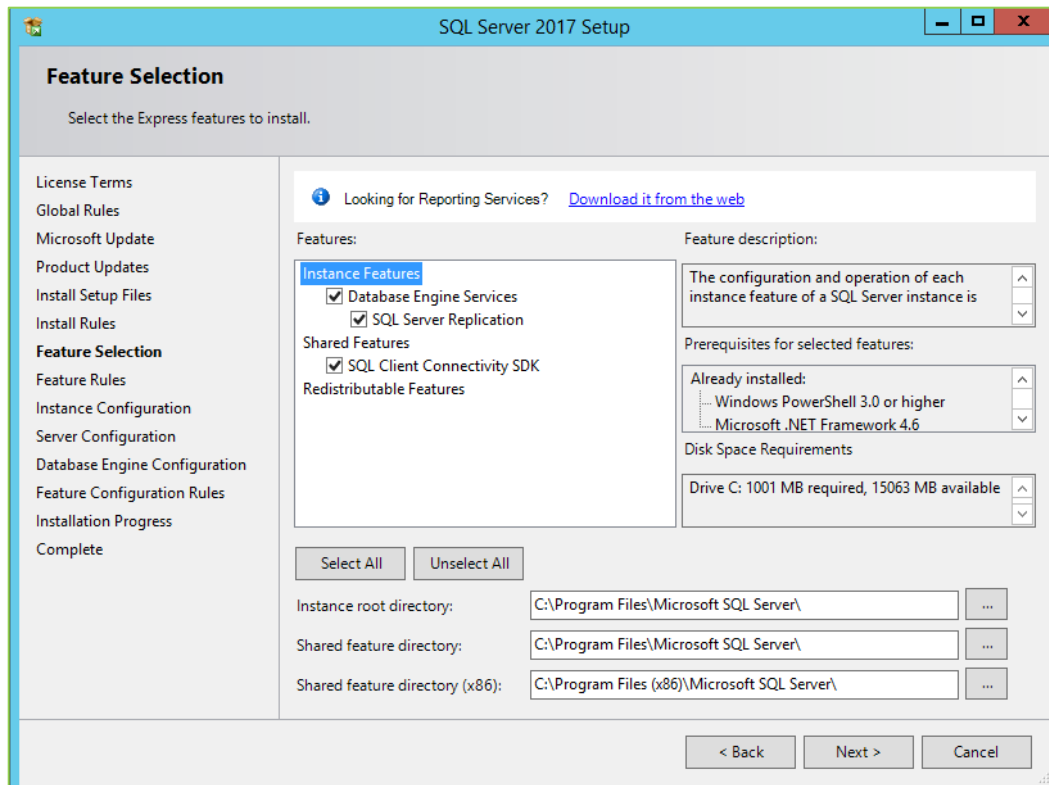
NOTE: A reboot is not required.



4 Installing SQL Server 2017 Express

Before running the installer, please make sure that the system is connected to the internet.

1. Run SQL Server 2017 Express installer.
2. From the Installation screen of the Installation Center Select **New SQL Server stand-alone installation or add features to an existing installation.**
3. Check **I accept the license terms** and click **Next.**
4. Click **Next** on Microsoft Update screen.
5. Click **Next** on Global Rules screen.
6. Click **Next** on Microsoft Update screen.
7. Click **Next** on Product Updates screen.
8. Use the default selections on the Feature Selection screen and click **Next.**



9. Select **Default instance**, and click **Next**.

Instance Configuration

Specify the name and instance ID for the instance of SQL Server. Instance ID becomes part of the installation path.

License Terms
Global Rules
Microsoft Update
Product Updates
Install Setup Files
Install Rules
Feature Selection
Feature Rules
Instance Configuration
Server Configuration
Database Engine Configuration
Feature Configuration Rules
Installation Progress
Complete

Default instance
 Named instance: MSSQLSERVER

Instance ID: MSSQLSERVER

SQL Server directory: C:\Program Files\Microsoft SQL Server\MSSQL14.MSSQLSERVER

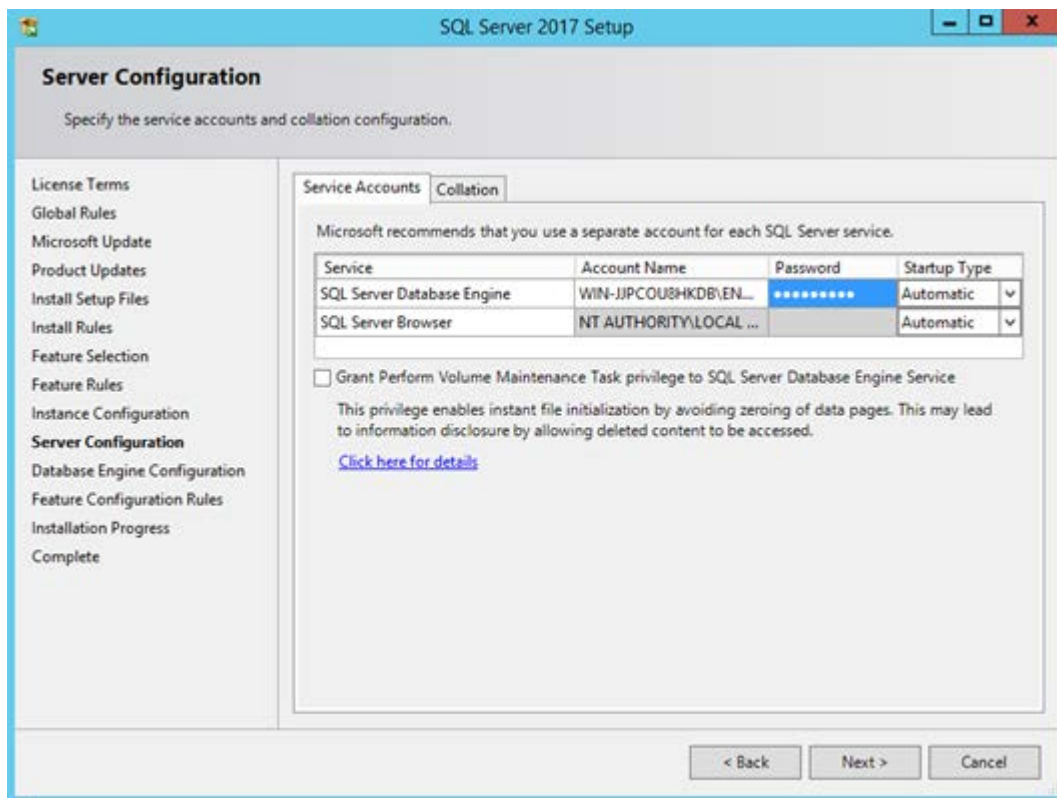
Installed instances:

Instance Name	Instance ID	Features	Edition	Version
<Shared Compone...		SSMS, Adv_SSMS, ...		10.51.2500.0

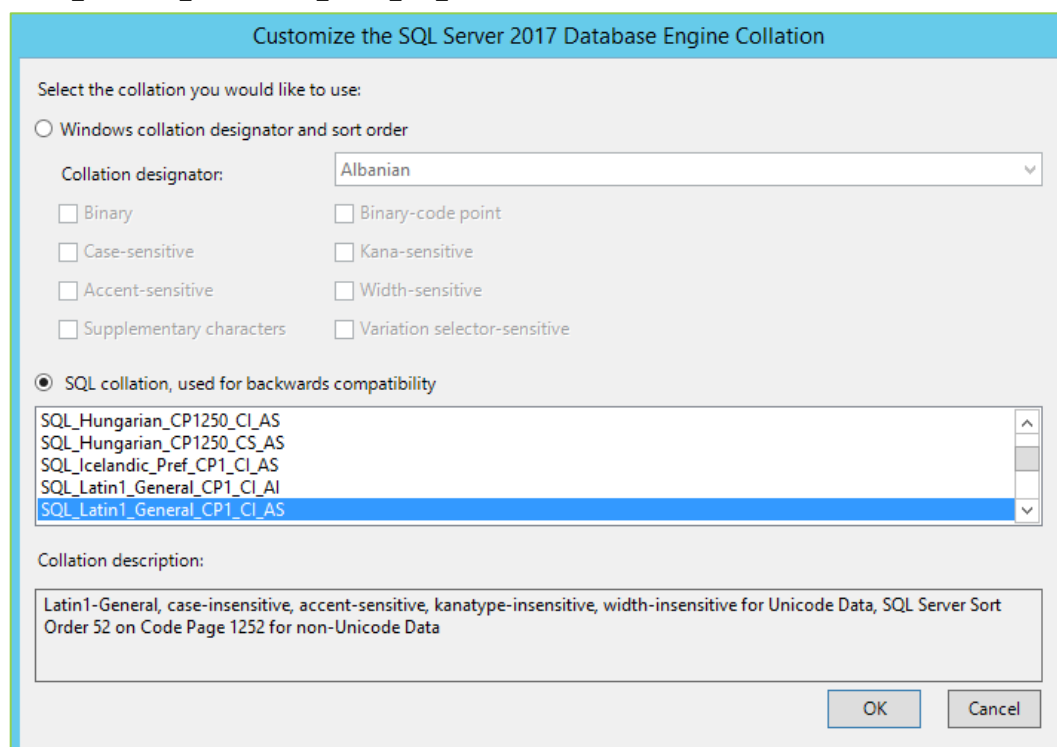
< Back Next > Cancel

10. Go to **Server Configuration > Service Accounts** tab, set the SQL Server Browser service Startup Type to **Automatic**. Change the **Account Name** and **Password** to the same Windows User that will be used for the RSM Service during the ENCOR installation. This user needs to belong to the **Windows Administrators** group. In the example below the ENCOR User account is used and the password is entered.





- Go to **Server Configuration > Collation** tab, set the collation to **SQL_Latin1_General_CP1_CI_AS**.



- Click **Next** on the Server Configuration screen.
- On Database Engine Configuration screen, click **Mixed Mode** and enter the previous (sa) password that was used for the previous MSSQLSERVER



database instance (prior to it being uninstalled).

The screenshot shows the 'Database Engine Configuration' window in the SQL Server 2017 Setup wizard. The window title is 'SQL Server 2017 Setup' and the subtitle is 'Database Engine Configuration'. Below the subtitle, it says 'Specify Database Engine authentication security mode, administrators, data directories and TempDB settings.' The left sidebar contains a list of installation steps, with 'Database Engine Configuration' highlighted. The main area has several tabs: 'Server Configuration', 'Data Directories', 'TempDB', 'User Instances', and 'FILESTREAM'. The 'Server Configuration' tab is active, showing options for 'Authentication Mode' (Windows authentication mode, Mixed Mode (SQL Server authentication and Windows authentication)), password fields for the SQL Server system administrator (sa) account, and a list of SQL Server administrators. The 'Mixed Mode' option is selected. The password fields are filled with dots. The list of administrators contains one entry: 'WIN-LB9KJGDKHKP\Administrator (Administrator)'. Below the list are buttons for 'Add Current User', 'Add...', and 'Remove'. A warning box on the right states 'SQL Server administrators have unrestricted access to the Database Engine.' At the bottom of the window are buttons for '< Back', 'Next >', and 'Cancel'.

14. Click **Next**.

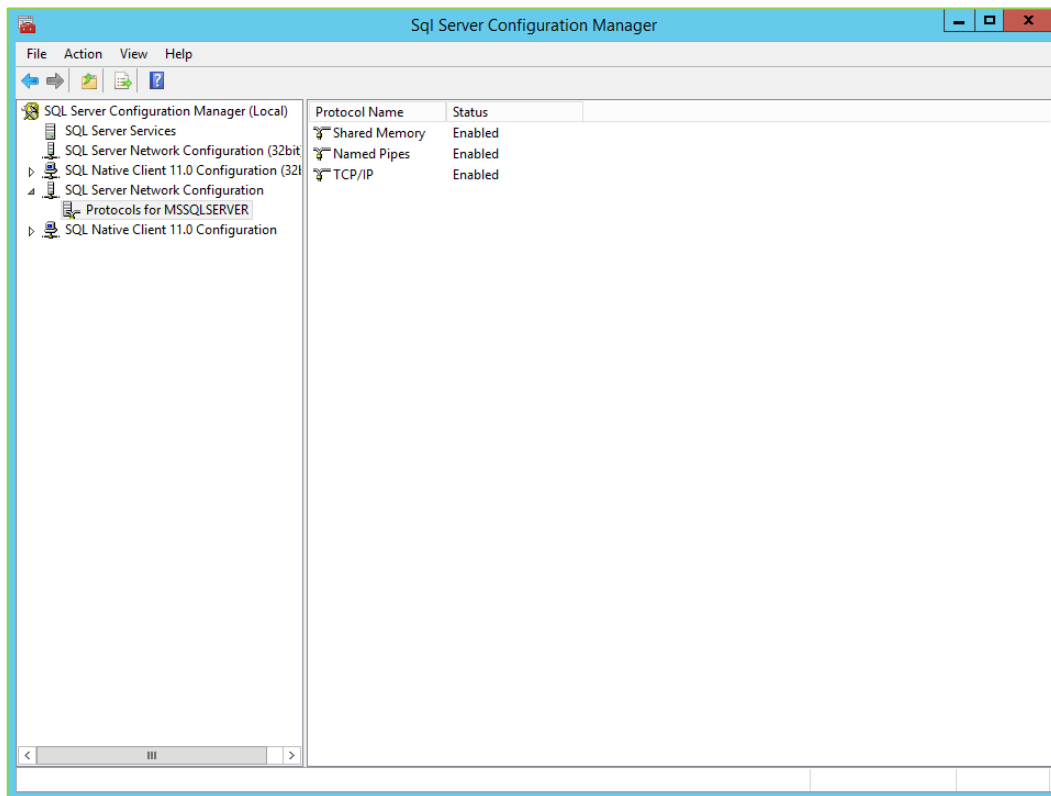
15. Click **Close**.

Once the SQL Server 2017 installation completes. Please proceed to the SQL Configuration Manager section of the document.



5 SQL Server Configuration Manager

1. Go to **Start** menu > **Microsoft SQL Server 2017** > **Configuration Tools** > **SQL Server 2017 Configuration Manager**.
2. Expand **SQL Server Network Configuration** in left panel and select **Protocols for MSSQLSERVER**.
3. Right-click **Named Pipes** protocol, select **Enable**, and click **OK**.
4. Right-click **TCP/IP** protocol, select **Enable**, and click **OK**.



5. Close SQL Server Configuration Manager.

Continue to the Configure SQL Server 2017 section of the document.

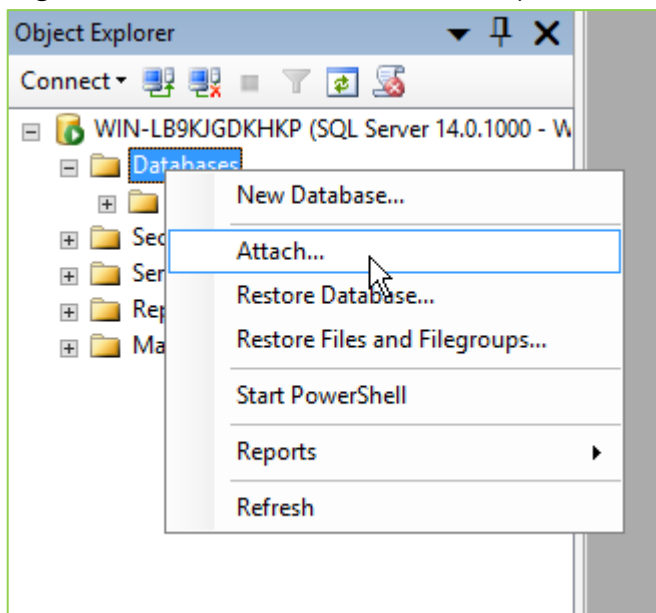


6 Configure User SQL Server 2017

1. Open the previously installed version of SQL Server SQL Server Management Studio
2. Select **Windows Authentication** from the Authentication drop down and click **Connect**.



3. Right-click **Databases** in Object Explorer and select **Attach...**



4. Click **Add**.
5. Add **FrontOff.mdf**, **ENCOR.mdf** and **ABO.mdf**. By default, the FrontOff.mdf is in the C:\MSSQL\Data directory. By default, the ENCOR.mdf and ABO.mdf is in the C:\NCR\ENCOR\Data directory.
6. Click **OK**.
7. Execute the spRunAfterRestore for all databases that were attached using SSMS. Using the following script...



```
use <databasename>  
exec spRunAfterRestore
```

8. Set the POS_Srv_Manager Windows service back to automatic for the Startup type (do not start the service) and reboot the machine.





© NCR Corporation, 2019

NCR endeavors to ensure that the information in this document is correct and fairly stated but does not accept liability for any error or omission.

The development of NCR products and services is continuous and published information may not be up to date. It is important to check the current position with NCR. This document is not part of a contract or license, save insofar as may be expressly agreed.

NCR Corporation
864 Spring Street
Atlanta, GA 30308

P/N 89000943
PIN 45002/074