

ENCOR

- Platform Setup Guide,
- Microsoft SQL 2017 Server
- Version 1.0.1.3
-
-



ENCOR Platform Setup Guide, Microsoft SQL Server

Date of Issue	Product ID Num.	Part Number	Brief Description
December 2017	45002/074	89000911	1.0.0.0 Release
December 2018	45002/074	89000926	1.0.0.0 Release (Updated)
April 2019	45002/074	89000940	SQL 2017 with 1.0.1.3

©Copyright NCR Corporation 1995-2019
All rights reserved

This publication is protected by federal copyright law. This document and its contents are the proprietary, confidential information and property of NCR Corporation ("NCR"). Unauthorized disclosure, reproduction, distribution or use of this document and/or its contents in any form is strictly prohibited. No part of this publication may be reproduced or transmitted into any human or computer language in any form or by any means, stored in a retrieval system, transmitted, redistributed, translated or disclosed to third parties, or de-compiled in any way including, but not limited to, photocopy, photograph, electronic, mechanical, magnetic or manual without the express written permission of NCR or its licensors, if any. This document, notwithstanding the above, may be distributed in electronic or printed form by NCR to personnel who are employed by either (a) a licensee and end user of the subject system of this document or (b) personnel from an authorized NCR Channel Partner or Solution Provider of the subject system of this document. All copies of this document so distributed and/or so authorized, shall contain a full copy of this copyright notice.

NCR has prepared this document as a guide to the proper installation, operation, customization and/or maintenance of NCR products. The drawings and specifications contained herein are the property of NCR and/or its licensors.

NCR endeavors to ensure that the information in this document is correct and fairly stated but does not accept liability for any error or omission. NCR makes no representation or warranties with respect to the contents hereof, and specifically disclaims any implied warranties of merchantability or fitness for a particular purpose or non-infringement. No commitments by NCR or its suppliers are made by or from this documentation which is provided for information only.

Development of NCR products and documentation is continuous: NCR reserves the right to revise this publication and to make changes at any time to the contents hereof or to the products herein described or discussed without notice and without any obligation for NCR to notify any person or organization of such revision or changes. Information published in this document will likely be superseded, and it is recommended that users regularly check for updates and newer versions.

The trademarks NCR, Retailix, StoreNext, ENCOR, ISS45, ScanMaster, R10, ACS, PocketOffice, RPO, RBO, ABO, Connected Payments, ServerEPS, Connected Services, Connected Loyalty, WinEPS and all other NCR product names are registered trademarks or trademarks of NCR; all other trademarks or registered trademarks are the property of their respective owners. Third-party products, services, or company names referenced in this document may be trademarked or copyrighted by their respective owners, and are for identification purposes only. Copyrights, trademarks and license agreements shall be governed and construed in accordance with the laws of the State of New York and the Federal Arbitration Act, and shall benefit NCR, its successors, and assigns.

Address comments and corrections regarding this document to:

Attn: Software Program Director
NCR
864 Spring Street
Atlanta, GA 30308

Table of Contents

1	Overview	1
2	Steps before Installing.....	2
3	SQL Server 2017 Installation.....	3
4	SQL Server Management Studio (SSMS) Installation	4
5	Final Setup Steps.....	5



Overview

This document guides the user through the installation of SQL Server 2017. The following are the minimum requirements that need to be fulfilled, before beginning the installation process:

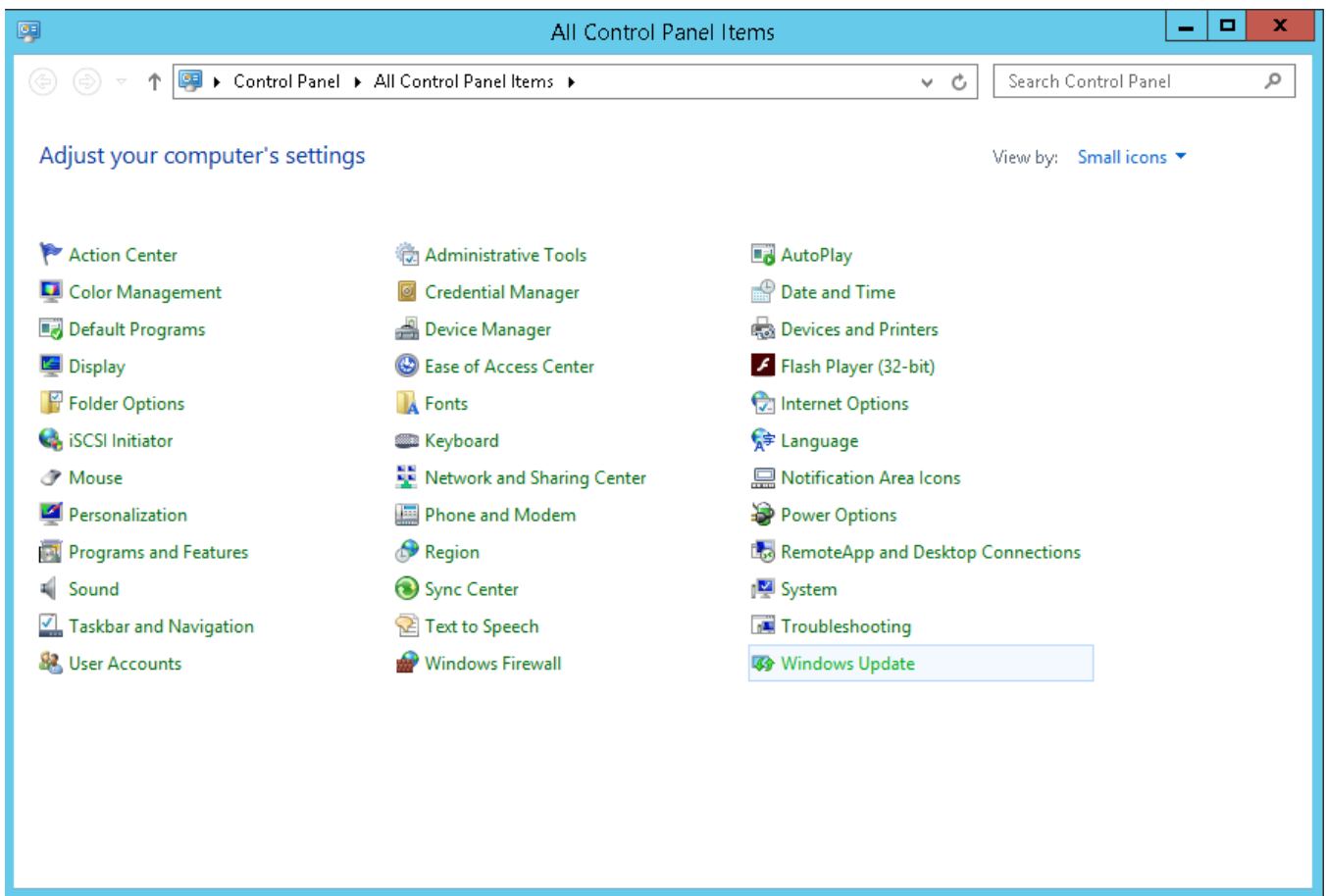
- Windows Server 2012 or newer
- .Net 4.6
- 6 GB of available hard-disk space



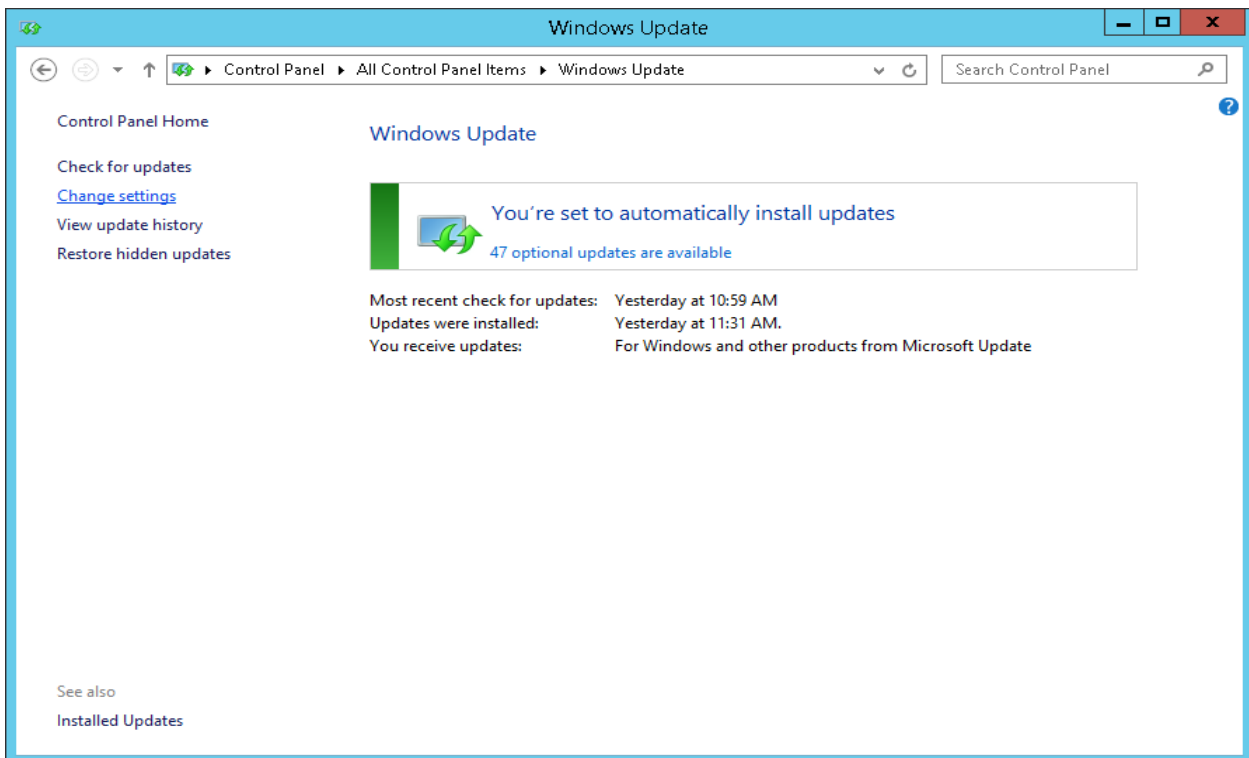
Steps to take before installing:

Before installing SQL Server 2017, user must configure Windows Updates. When Windows 2012 Server is installed, the netfx3 (.NET Framework 3) feature is not enabled by default, and this feature is required by SQL Server 2017. If the installation disc for Windows is available, this feature can be enabled manually. If not, then the installation wizard for SQL Server must handle turning on the feature. To do so, Windows Update must be configured properly.

1. Go to **Control Panel** and select "Windows Update".

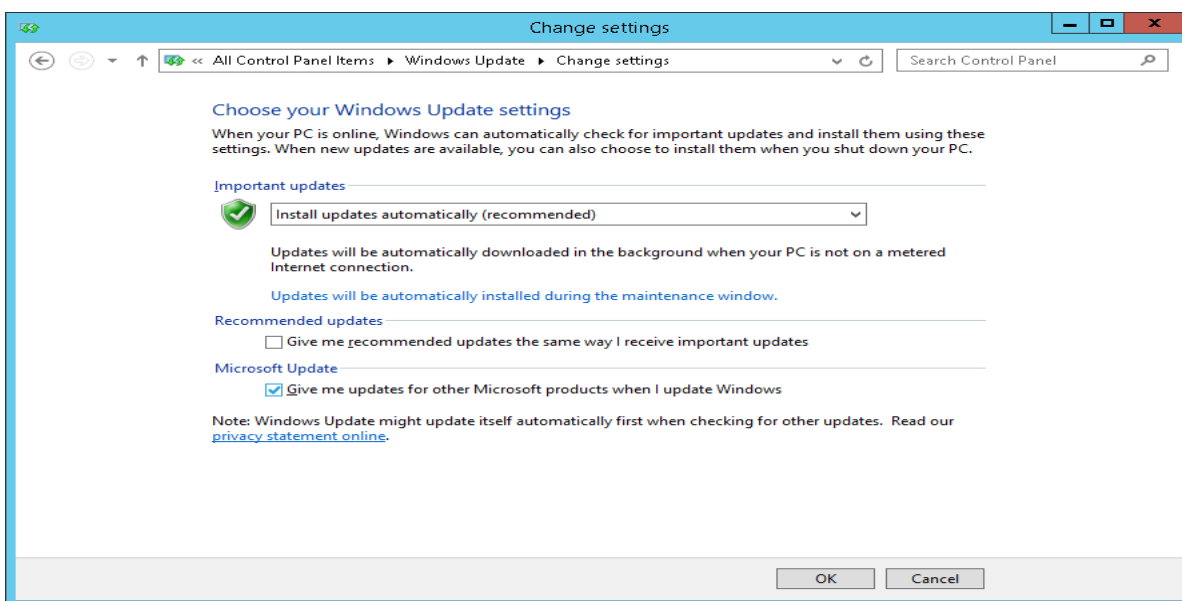


2. Click on **Change Settings**.



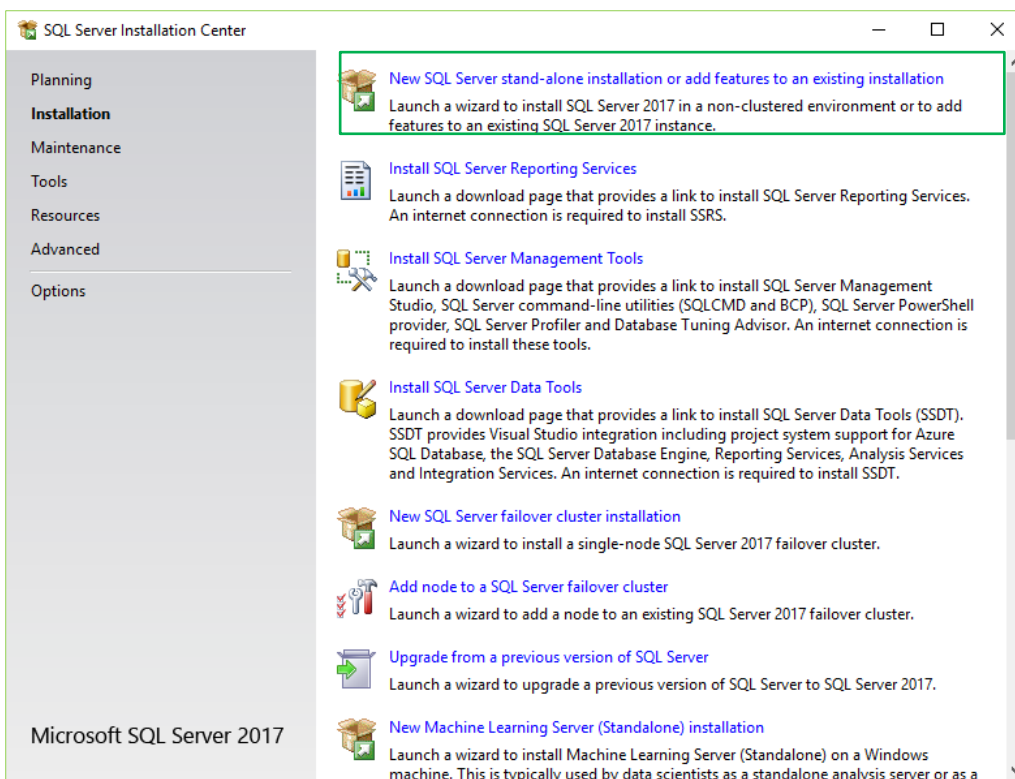
3. Select the checkbox for "Give me updates for other Microsoft products when I update Windows".

- a. Click **Ok**.

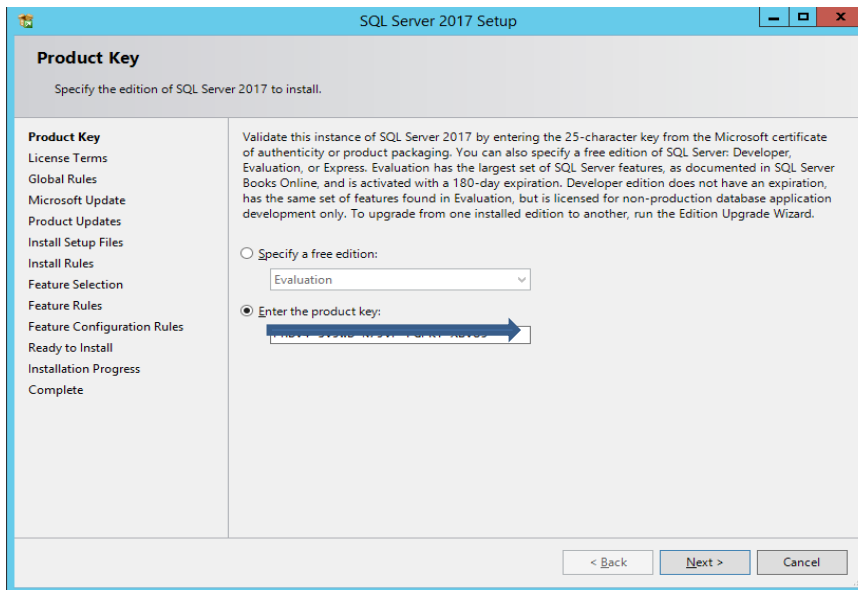


SQL Server 2017 Installation

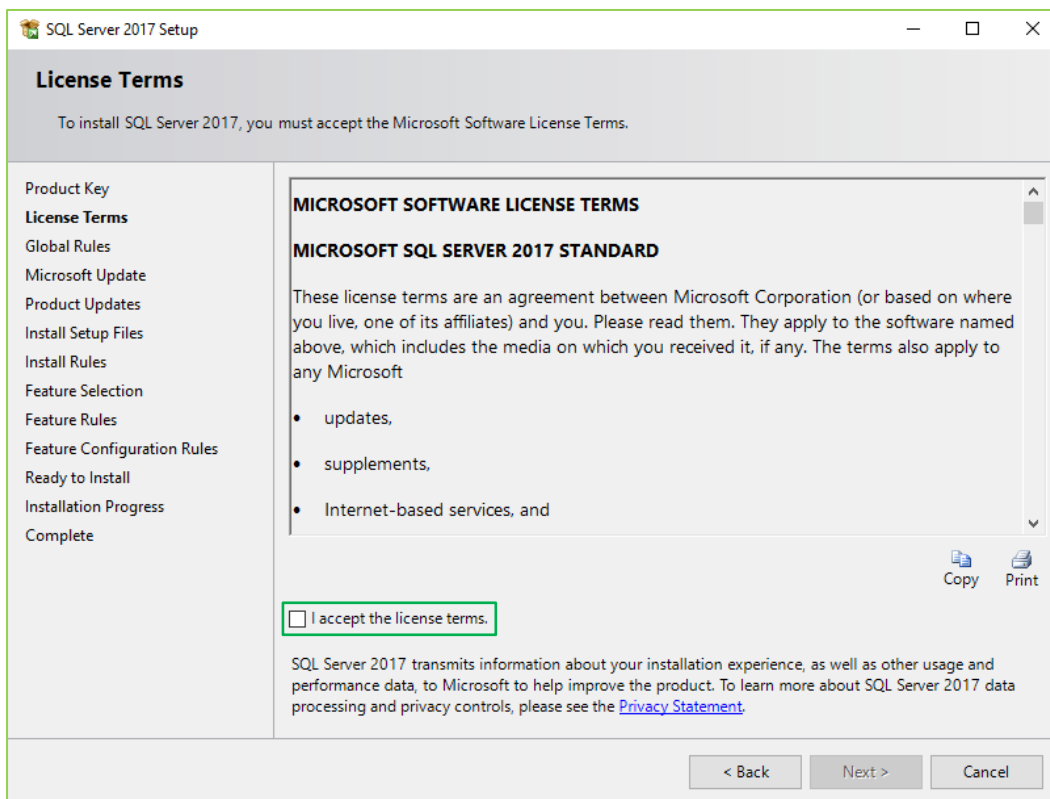
1. From the CD or from the folder containing the SQL Source Files, right click on **SETUP.EXE**, and "Open" or "Run as Administrator".
 - a. OR, right-click on the .iso file and click on **Mount** and then right-click on the "Setup.exe". Run SQL Server Setup.
 - b. The SQL Server Installation Center will open.
2. Select **Installation > New SQL Server stand-alone installation or add features to an existing installation.**



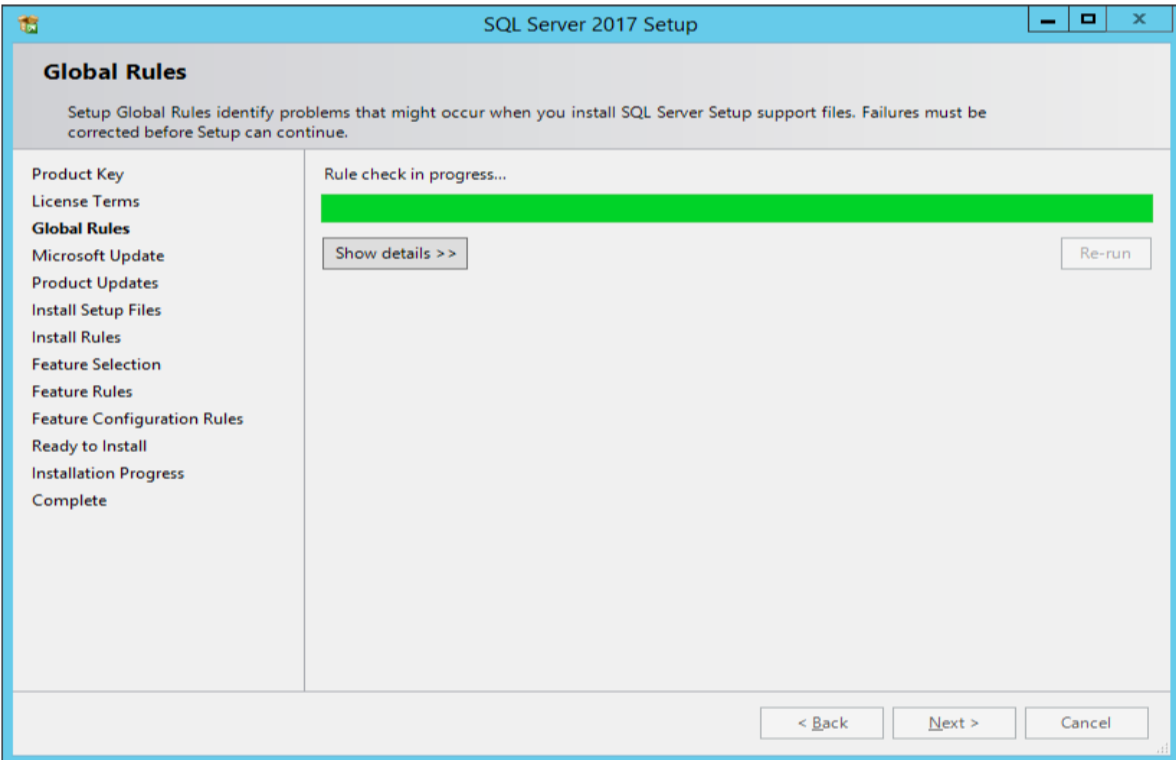
3. Enter the product key (if required), and click **Next**.



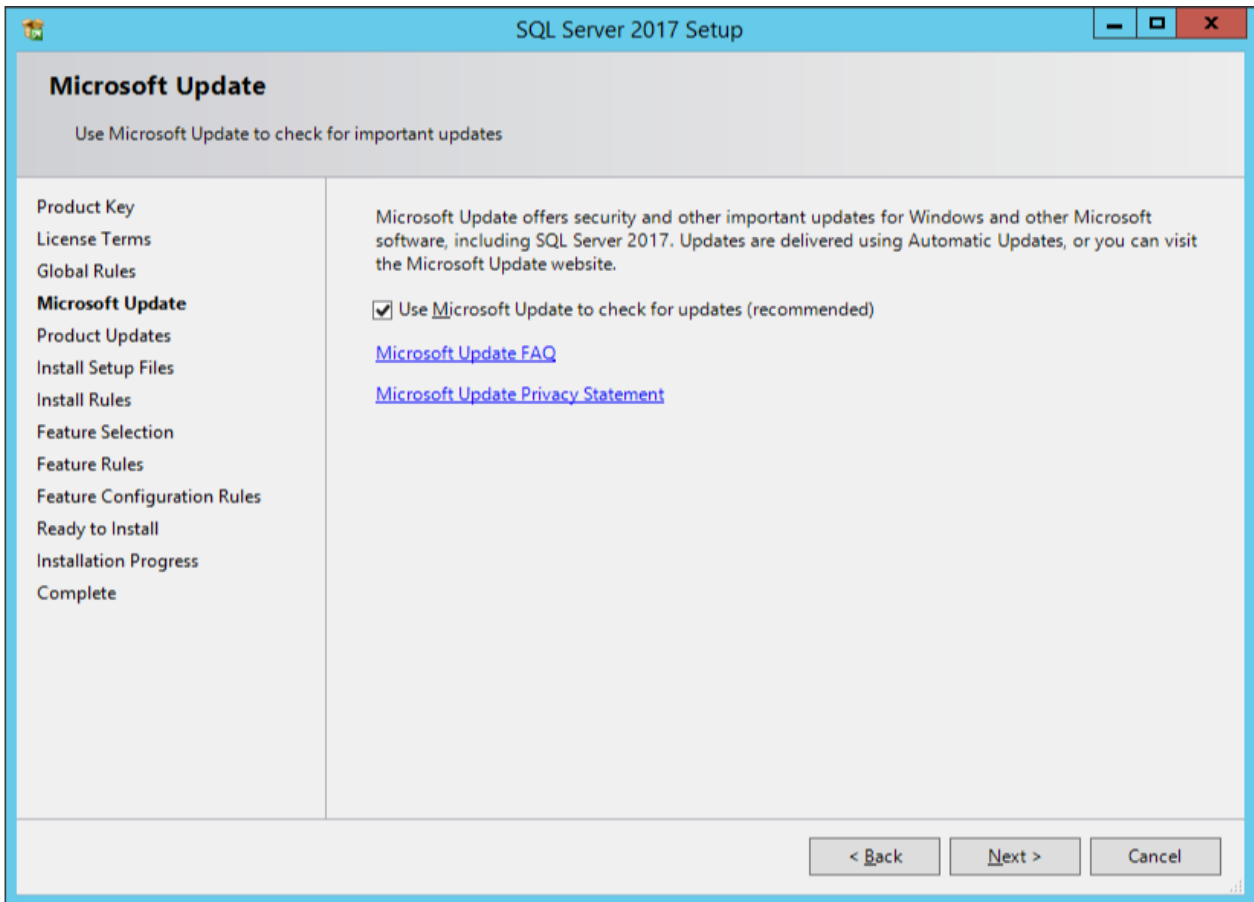
4. On License Terms screen, select **I accept the license terms** and click **Next**.



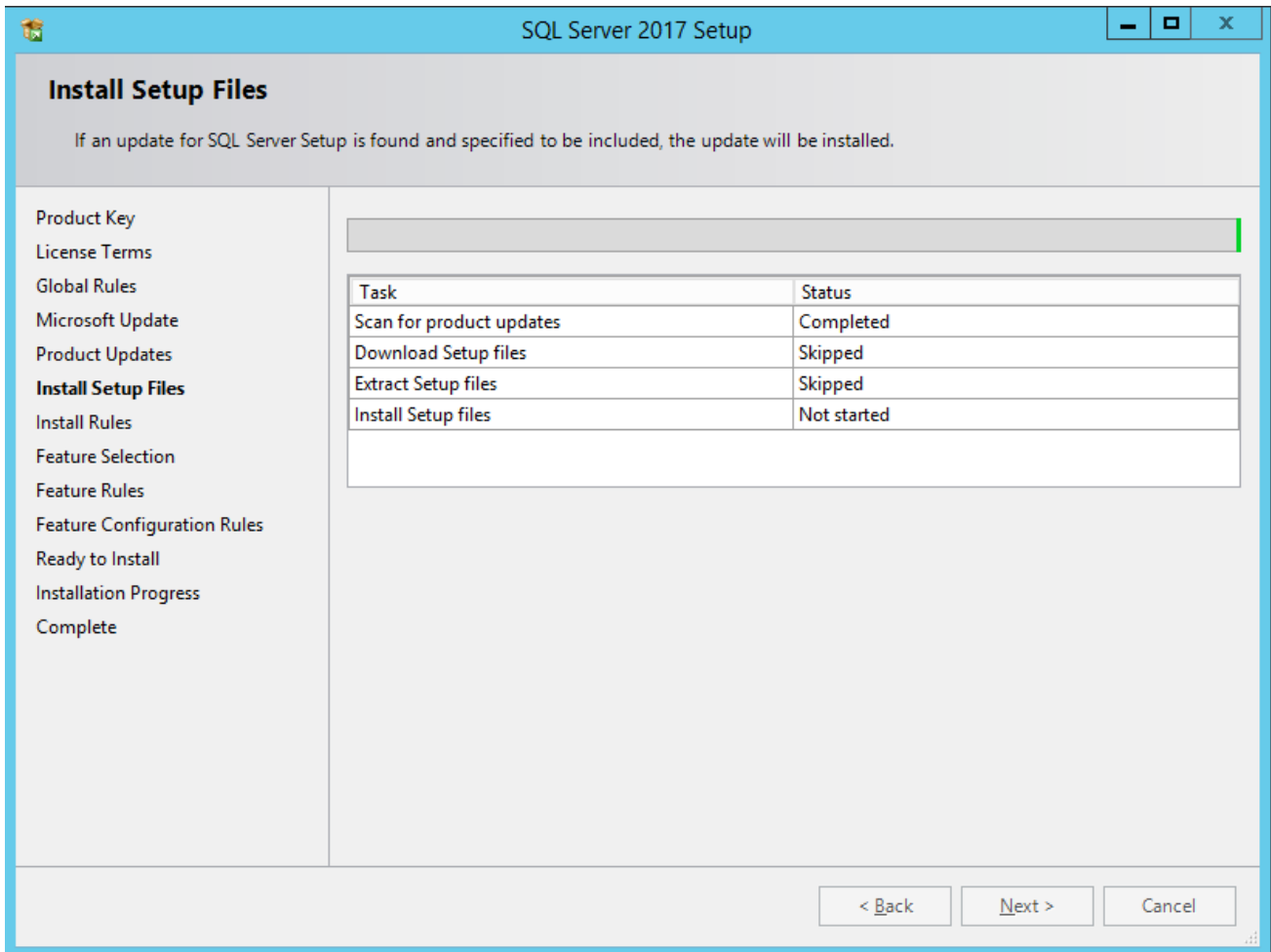
5. The **Global Rules** will automatically run, checking for rules and other information.



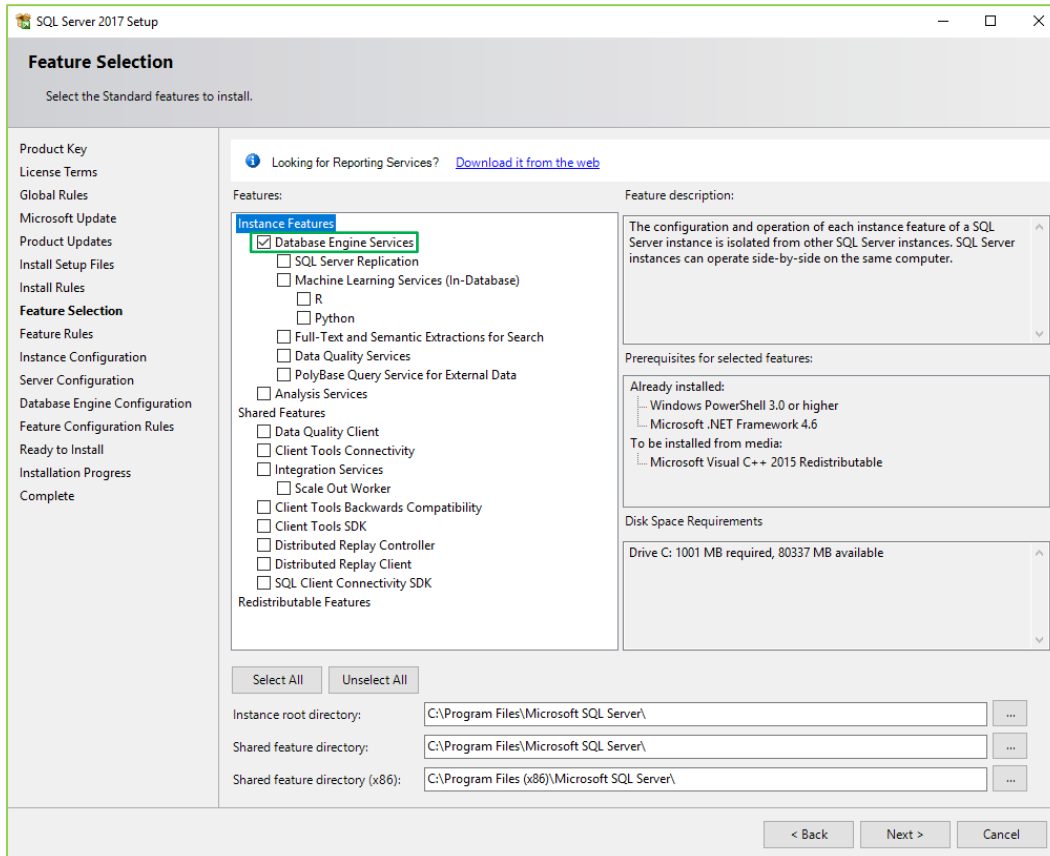
- 6. On Microsoft Update screen, click **“Use Microsoft Update to check for updates (recommended)”**.
 - a. Click **Next**.



7. Depending on the quickness of the Server, user might see the **Product Updates** Screen show (flashing by very fast).
 - a. This install will check for product updates and download if available.
8. The **Install Rules** will then run to detect any potential problems that might occur during the setup.
 - a. Click **Next**.



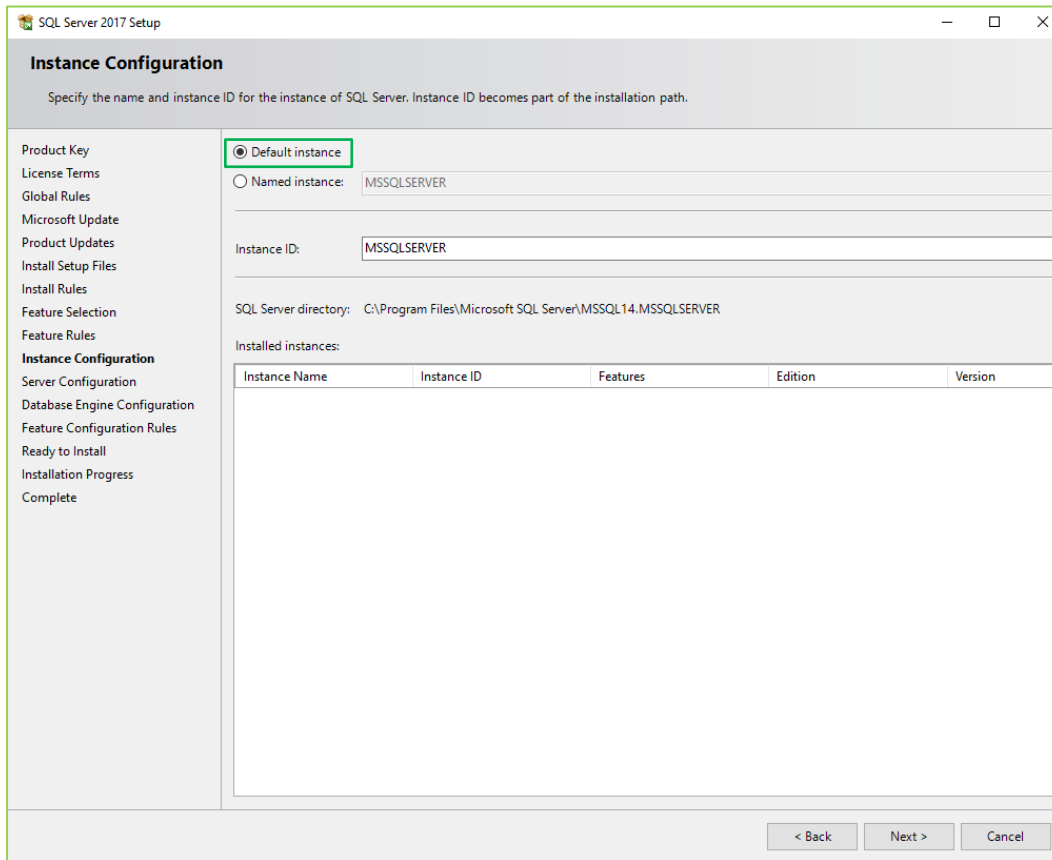
9. On **Feature Selection** screen, select: **Database Engine Services**, **SQL Server Replication**, **Client Tools Connectivity**, and **Client Tools Backwards Compatibility** and click **Next**.



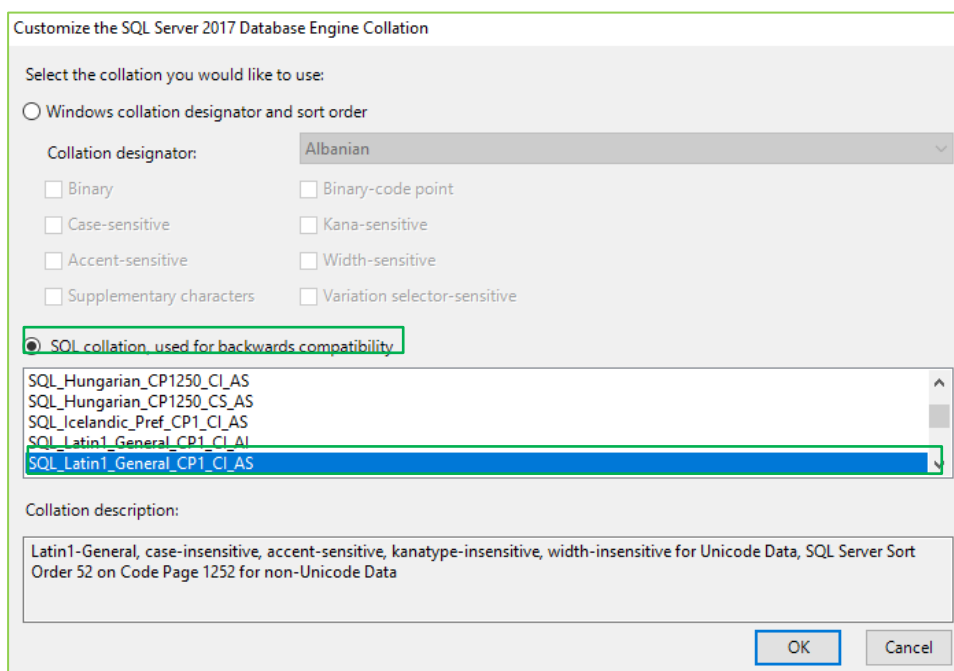
10. The **Feature Rules** will run and give any warnings with the features that were selected.



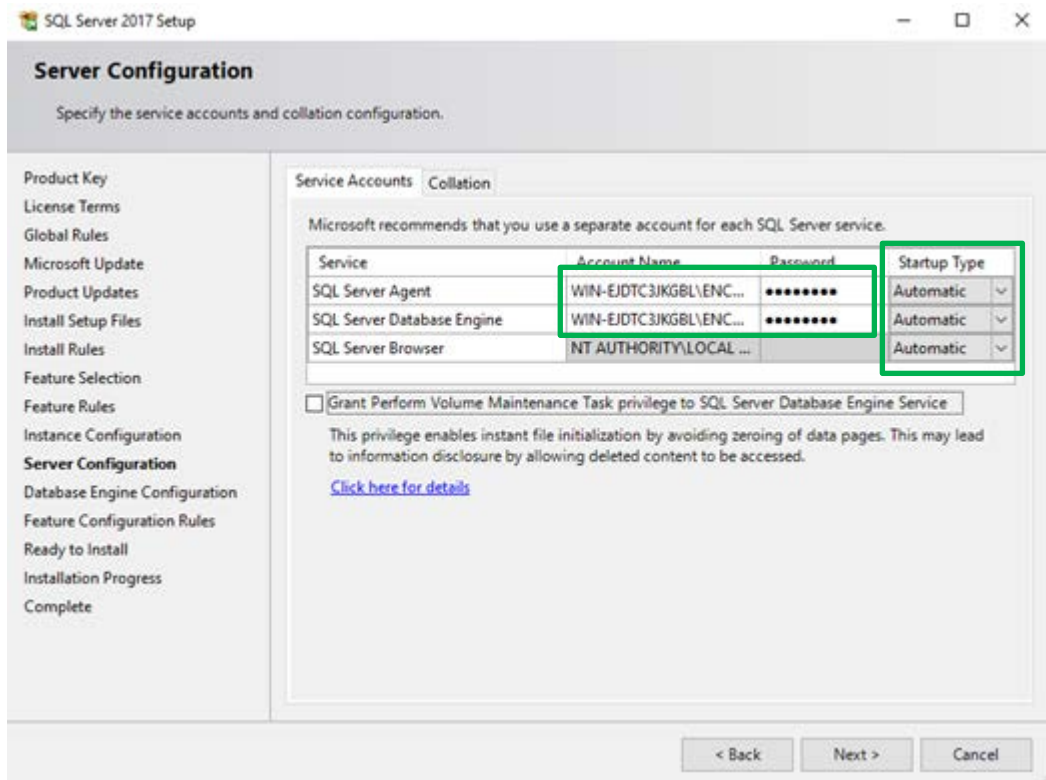
11. On the **Instance Configuration** screen, select **Default Instance** (if it is not already selected), and click **Next**.



12. On Server Configuration screen, do the following.
- Click **Collation** tab > **Customize**, then select **SQL collation, used for backwards compatibility** > **SQL_Latin1_General_CP1_CI_AS**, and click **OK**.



- b. Select **Service Accounts** tab, set the *Startup Type* of *SQL Server Agent*, *SQL Server Database Engine* and *SQL Server Browser* **Automatic**. Change the Account Name and Password to the same Windows User that will be used for the RSM Service during the ENCOR installation. This user needs to belong to the Windows Administrators group. In the example below the ENCOR User account is used and the password is entered. Click **Next**.



Note: Some SQL Server Editions do not contain the SQL Server Agent service.

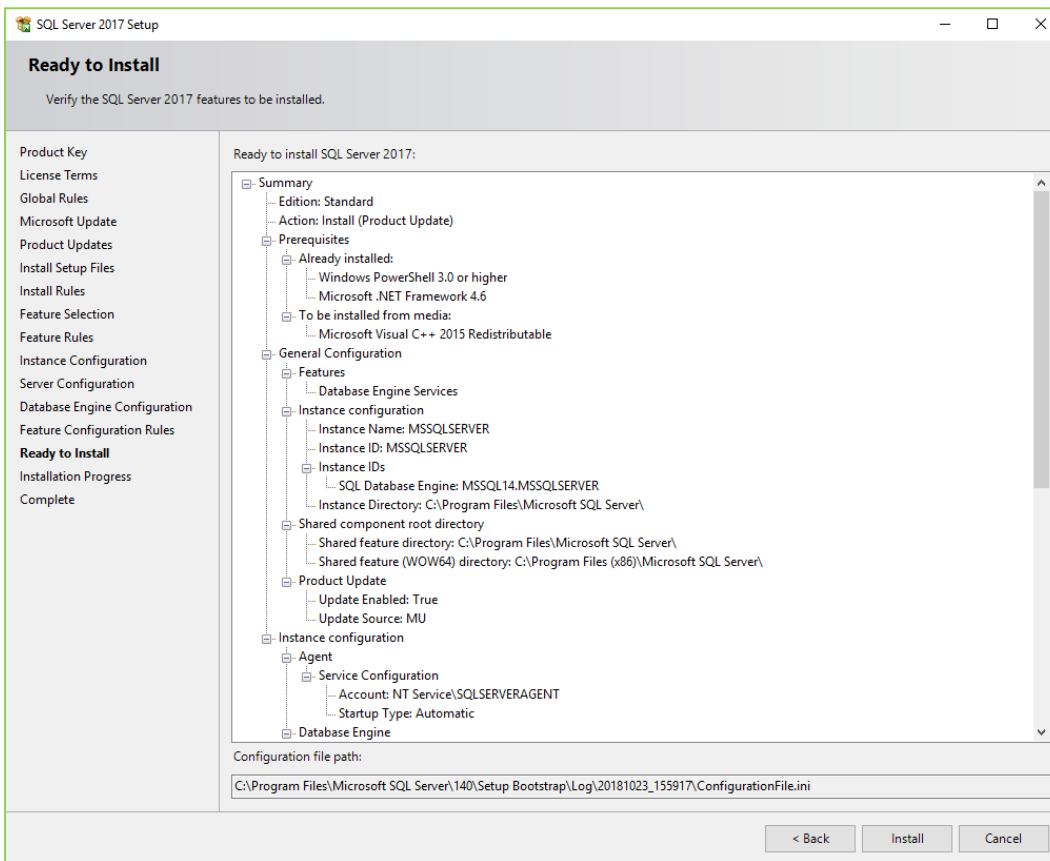
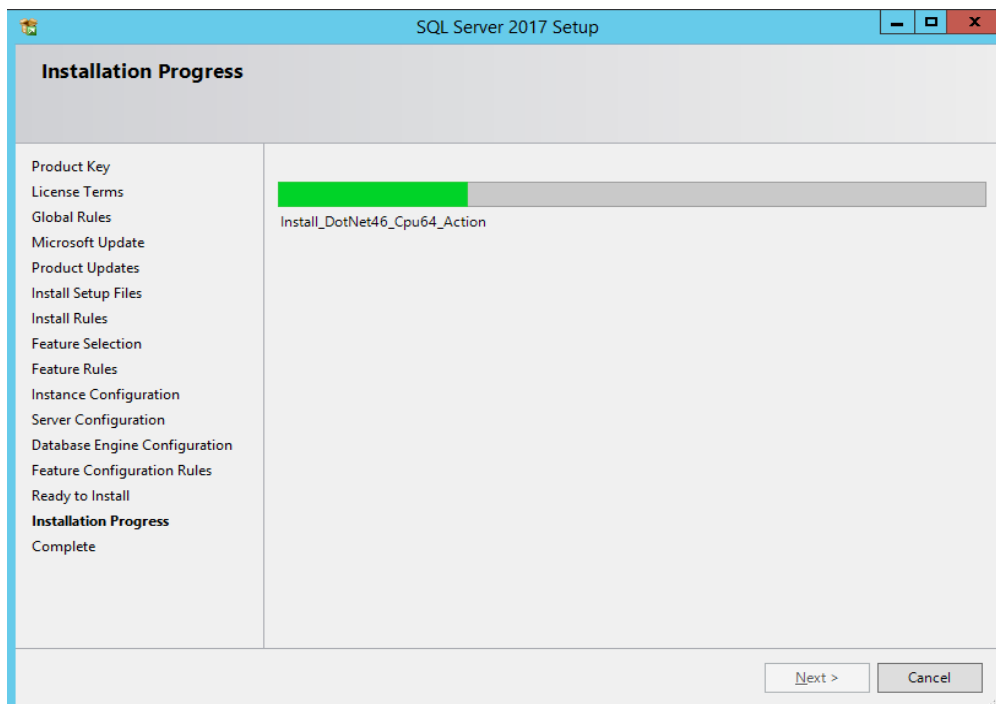


13. On Database Engine Configuration screen, select **Mixed Mode (SQL Server Authentication and Windows Authentication)** option and enter a strong password for the (sa) account.

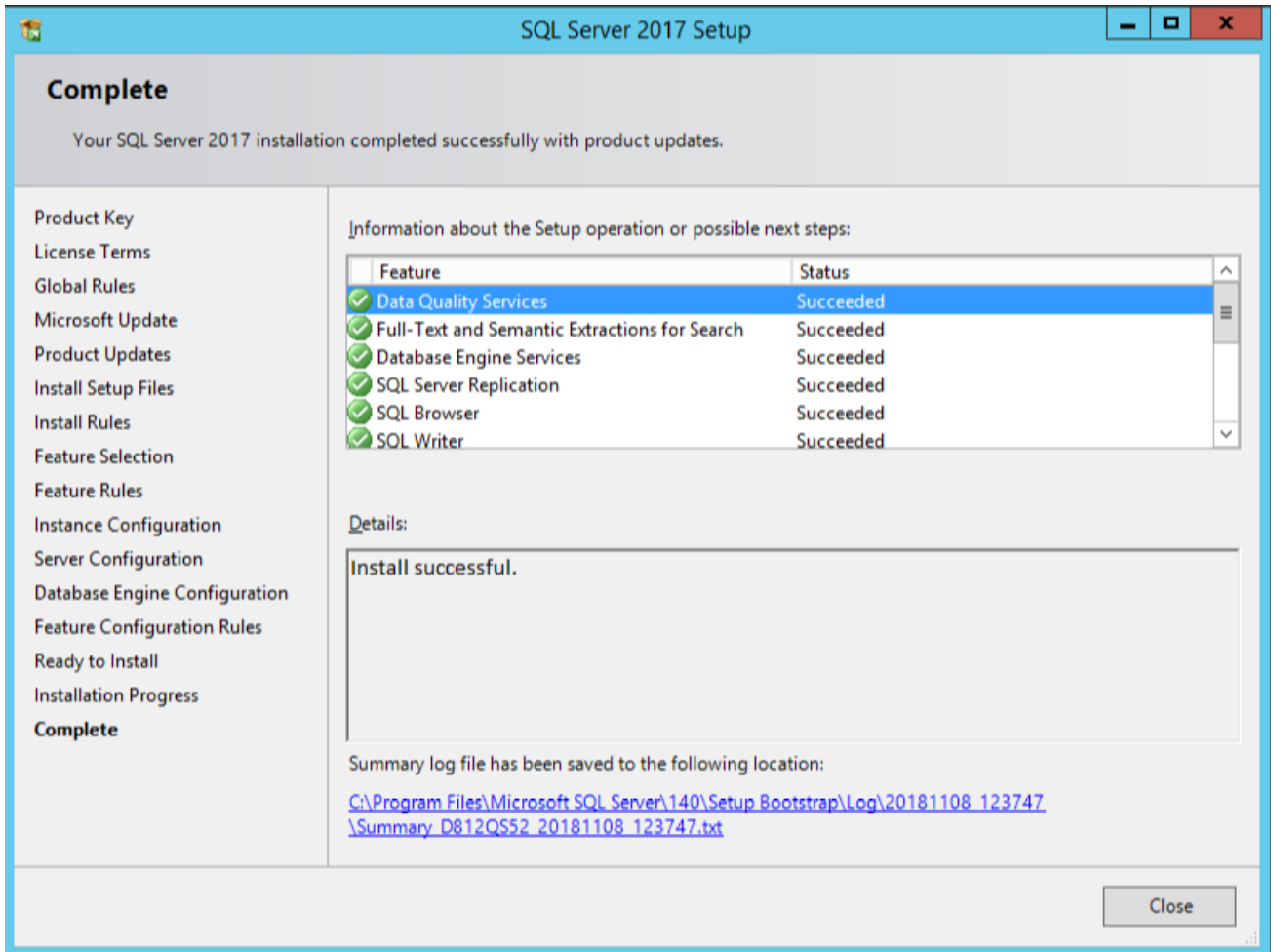
Note: Minimum password length is 8 characters, the password should contain at least one upper case, one number and one special character.

14. Click **Add Current User**.
- "Add" or "Remove" any other users that are needed.



15. On **Ready to Install** screen, click **Install**.16. The install starts and the **Installation Progress** screen will show. Depending on the system, this may take several minutes to complete.

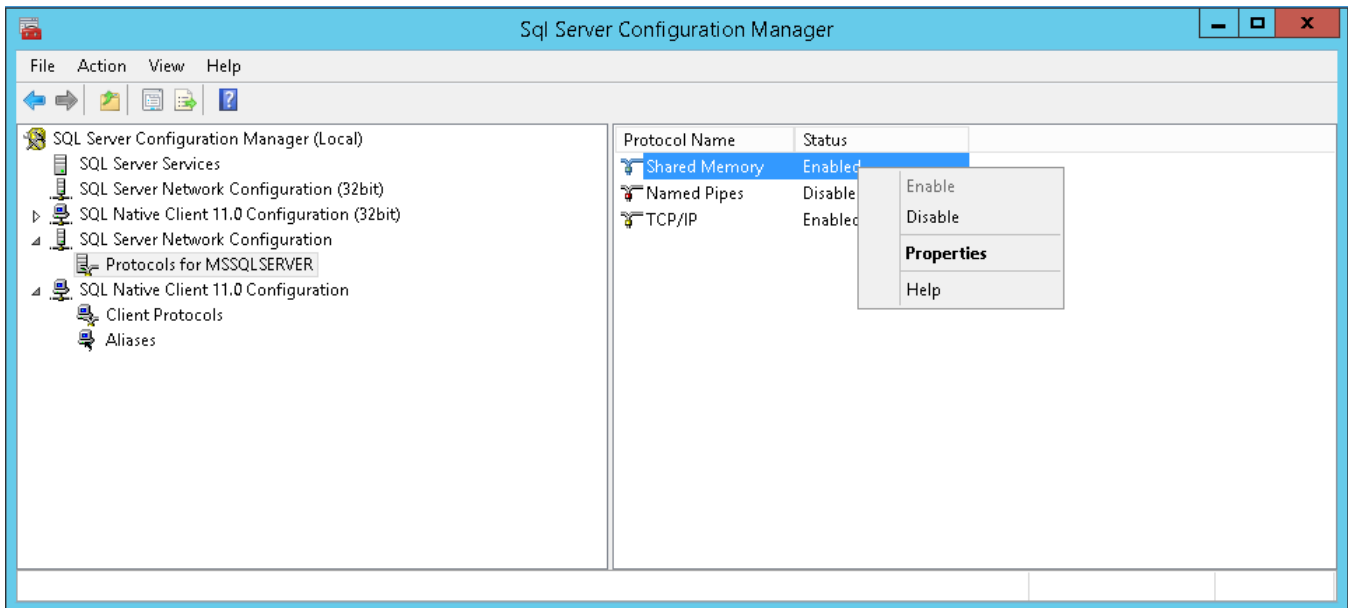
17. Once the installation completes, and a list of "Features" that were installed will show with a "Status" column with "Succeeded". Click **Close**.



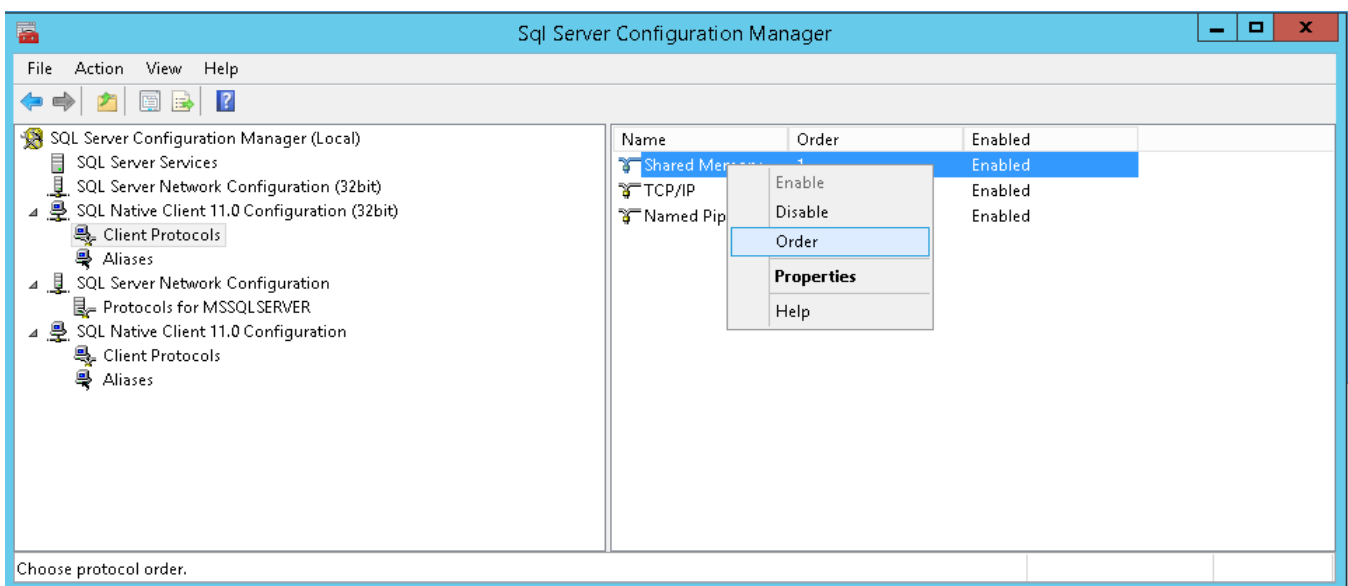
18. It is recommended to manually restart the computer for the SQL Server 2017 features to be enabled.



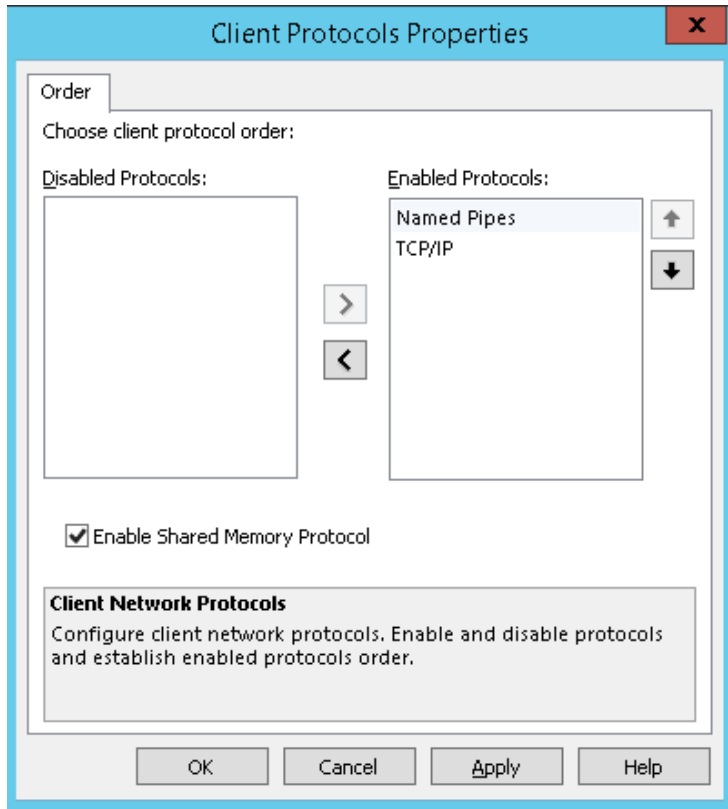
19. After reboot, go to **START**, click the down-arrow and in **APPS**, select **SQL Server 2017 Configuration Manager**.
20. Expand **SQL Server Network Configuration**, by clicking on the arrow.
 - a. Click on "Protocols for MSSQLServer".
 - b. Right-click on "Shared Memory" and select **Disabled**.
 - c. Make sure that "Named Pipes" and "TCP/IP" are set to **Enabled**.



21. Click on the arrow to expand the **SQL Native Client 11.0 Configuration**.
 - a. Select **Client Protocols**, and right-click "Shared Memory" and click on **Order**.



22. Under **Enabled Protocols** select "Named Pipes" and click the up-arrow to move it to the top of the list.
 - a. Click **Apply** and **Ok**.



23. Close the **SQL Server Network Configuration Manager**.
24. Reboot Server.



SQL Server 2017 Management Studio (SSMS)

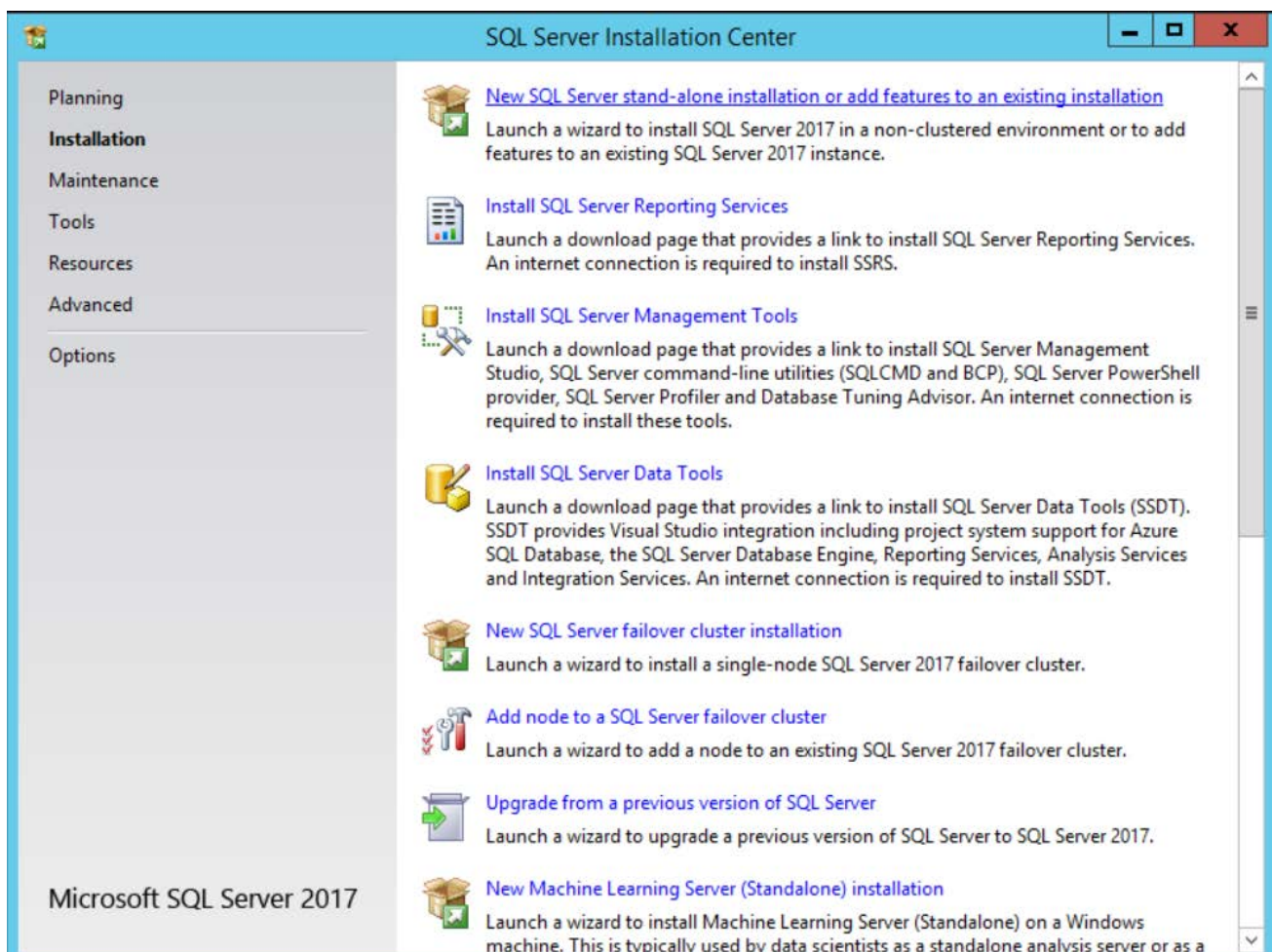
Installation of SSMS:

With SQL Server 2017, in the "Features Selection Tree", the "Management Tools – Basic" and "Management Tools – Complete" have been removed. It is now necessary to manually install the **SQL Server Management Studio**.

NOTE* User must have internet connection.

User can download from Microsoft webpage, or by opening the **SQL Server Installation Center** and choosing "Install SQL Server Management Tools".

1. Go to **SQL Server Installation Center** and click on "Install SQL Server Management Tools".



2. User will be taken to <https://microsoft.com> – page **Download SQL Server Management Studio (SSMS)**.

The screenshot shows a web browser window displaying the Microsoft Docs page for downloading SQL Server Management Studio (SSMS). The browser's address bar shows the URL: <https://docs.microsoft.com/en-us/sql/ssms/download-sql-sen>. The page title is "Download SQL Server Management Studio (SSMS)".

The page layout includes a navigation menu on the left with the following items:

- SQL Server 2017
 - Filter by title
 - What is SSMS?
 - Download SSMS** (selected)
 - SSMS Changelog & Previous Releases
 - Release Notes
 - Install non-English SSMS
 - Install SQL Server PowerShell Module
 - SQL Server Agent +
 - F1 Help +
 - Menu Help +
 - Object Explorer +
 - Solution Explorer +
- Download PDF

The main content area features the article title "Download SQL Server Management Studio (SSMS)" and a sub-header "In this article". Below the sub-header, there is a list of links to related content:

- SSMS 17.9 is the current General Availability (GA) version of SSMS
- SSMS 18.0 (preview)
- Available Languages (SSMS 18.0 preview)
- New in this Release (SSMS 18.0 preview)
- Supported SQL offerings (SSMS 18.0 preview)
- Supported Operating systems (SSMS 18.0 preview)
- SSMS installation tips and issues (SSMS 18.0 preview)
- Release Notes (SSMS 18.0 preview)
- Previous releases
- Feedback
- Get Help
- See Also
- Contribute SQL documentation

At the bottom of the page, there is a section labeled "APPLIES TO:" with checkmarks indicating compatibility with SQL Server, Azure SQL Database, and Azure SQL Data Warehouse. A "Feedback" button is located in the bottom right corner.



3. Click on **Previous Releases** and go to “SSMS 16.5.3” or “SSMS 17.9”.
 - a. Click on “English (United States)”.

The screenshot shows a web browser window displaying the Microsoft Docs page for SSMS 16.5.3. The browser's address bar shows the URL: <https://docs.microsoft.com/en-us/sql/ssms/sql-server-manag...>. The page title is "SSMS 16.5.3".

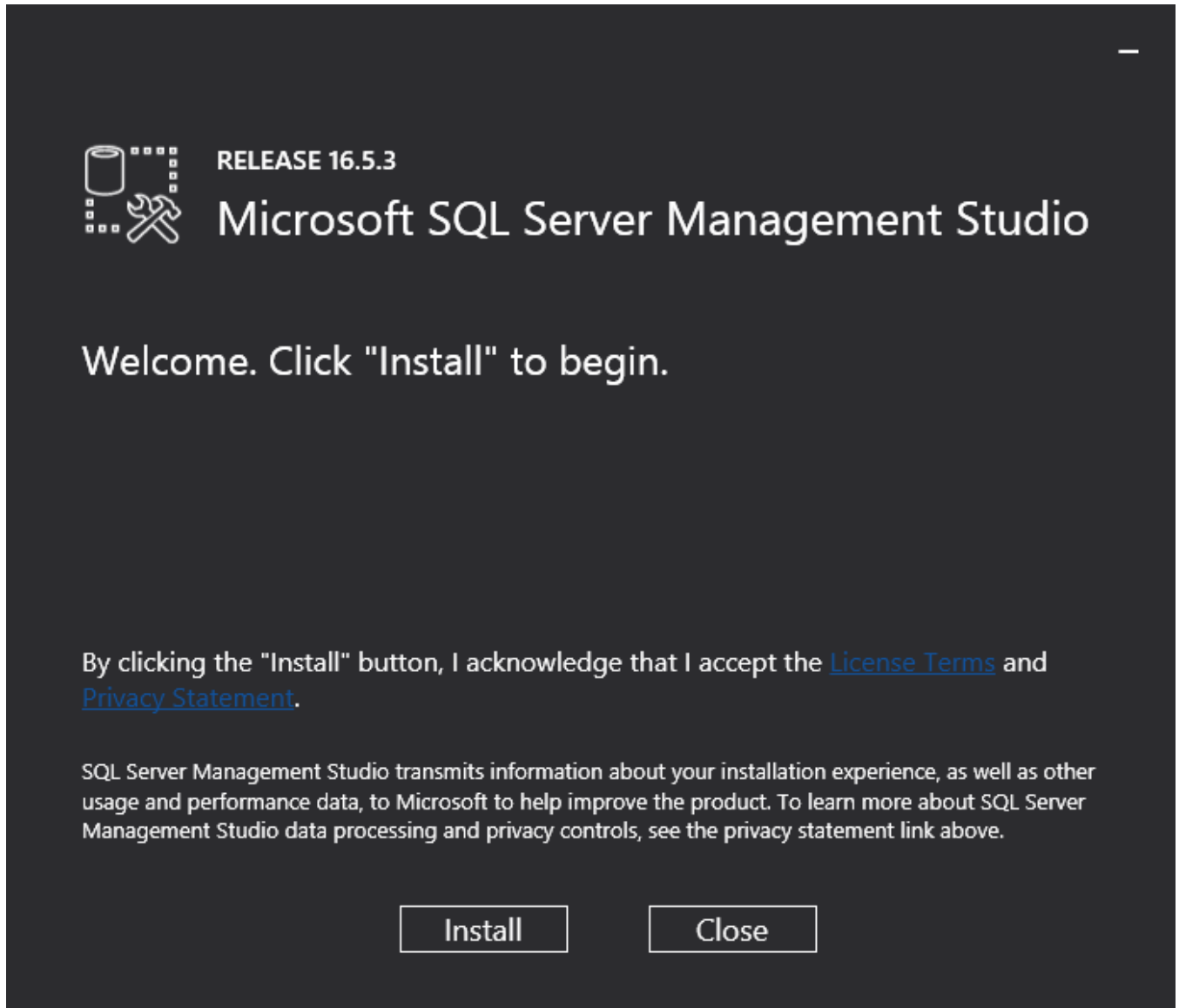
On the left side, there is a navigation sidebar for "SQL Server 2017" with a search filter "Filter by title". The sidebar lists various options, with "SSMS Changelog & Previous Releases" highlighted in blue. Other options include "Release Notes", "Install non-English SSMS", "Install SQL Server PowerShell Module", "SQL Server Agent +", "F1 Help +", "Menu Help +", "Object Explorer +", "Solution Explorer +", "Templates +", "Visual Database Tools +", "Register Servers +", and "Tutorials +". At the bottom of the sidebar, there is a "Download PDF" link.

The main content area displays the following information:

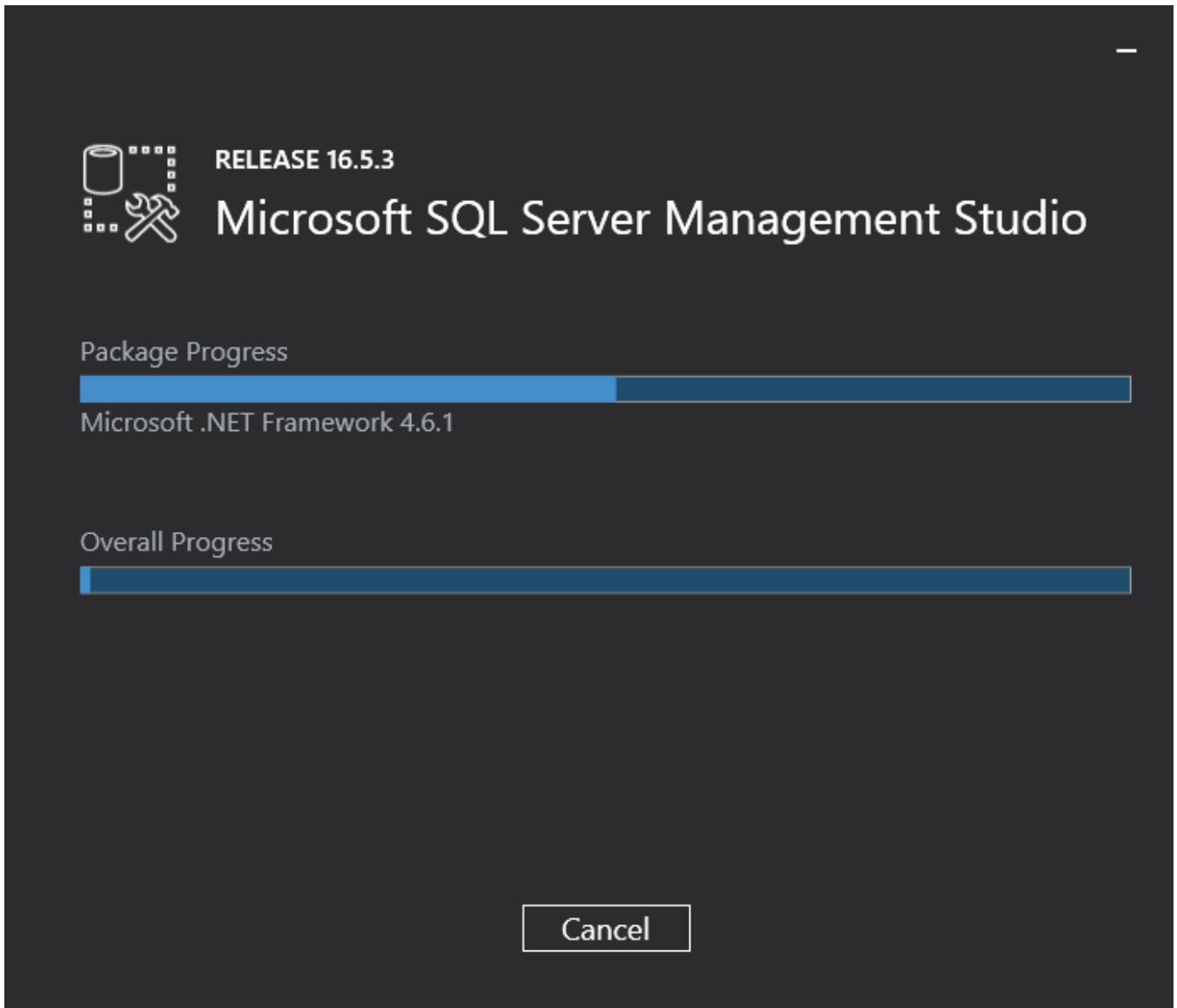
- SSMS 16.5.3** (with a download icon)
- Generally available | Build number: 13.0.16106.4
- Language links: [Chinese \(Simplified\)](#) | [Chinese \(Traditional\)](#) | [English \(United States\)](#) | [French](#) | [German](#) | [Italian](#) | [Japanese](#) | [Korean](#) | [Portuguese \(Brazil\)](#) | [Russian](#) | [Spanish](#)
- The following issues were fixed this release:
 - Fixed an issue introduced in SSMS 16.5.2 which was causing the expansion of the 'Table' node when the table had more than one sparse column.
 - Users can deploy SSIS packages containing OData Connection Manager which connect to a Microsoft Dynamics AX/CRM Online resource to SSIS catalog. For more information, see [OData Connection Manager](#).
 - Configuring Always Encrypted on an existing table fails with errors on unrelated objects. [Connect ID 3103181](#)
 - Configuring Always Encrypted for an existing database with multiple schemas doesn't work. [Connect ID 3109591](#)
 - The Always Encrypted, Encrypted Column wizard fails due to the database containing views that reference system views. [Connect ID 3111925](#)
 - When encrypting using Always Encrypted, errors from refreshing modules after encryption are incorrectly handled.
- Feedback button (with a dropdown arrow)



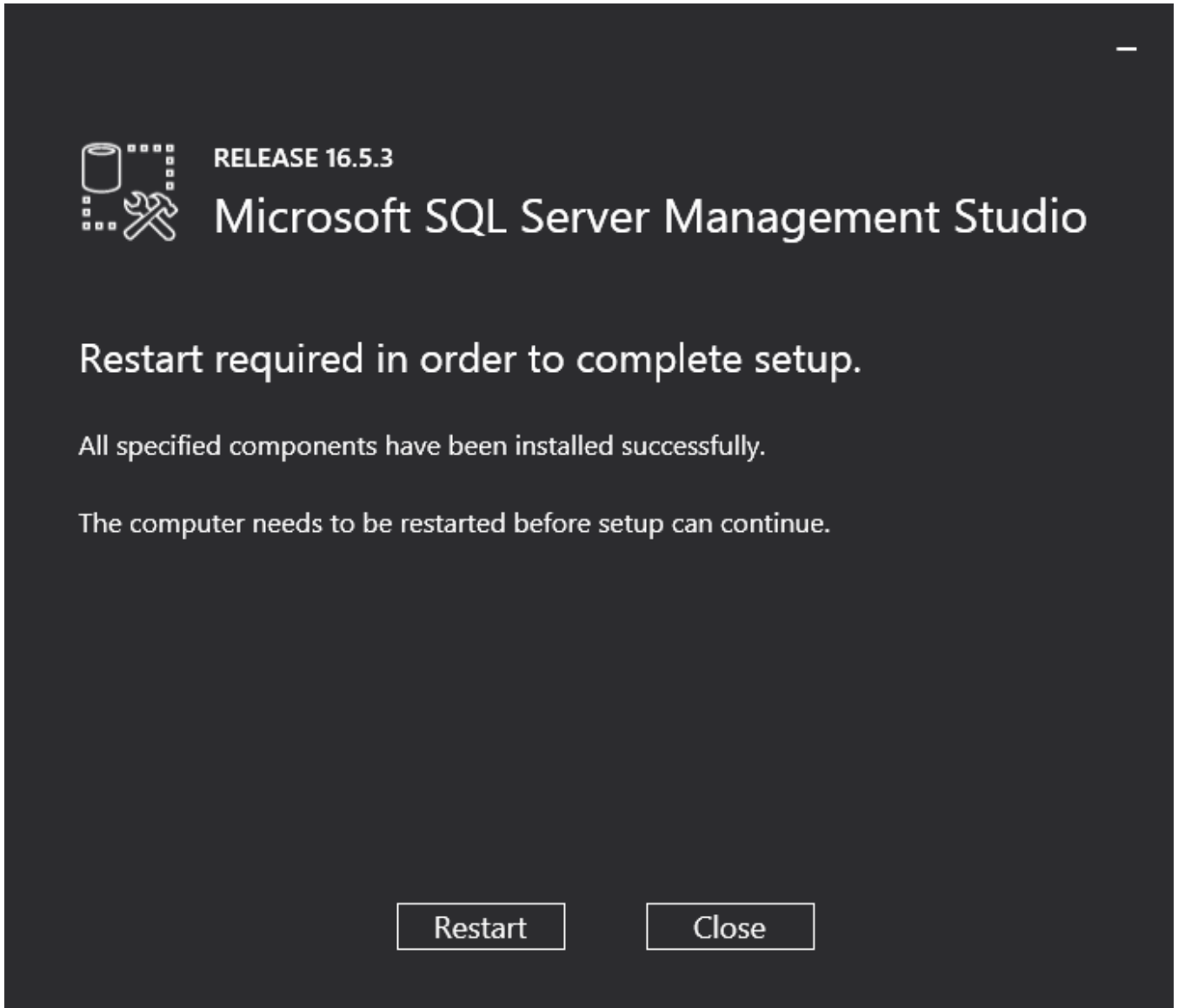
4. The **Welcome** Screen for "Release 16.5.3 Microsoft SQL Server Management Studio" (or 17.9) shows.
 - a. Click on **Install**.



5. The **Package Progress** and **Overall Progress** bars show the installation progress.



6. After installation completes, a **Restart required** message appears.
 - a. Click **Restart**.
 - b. Computer will reboot.



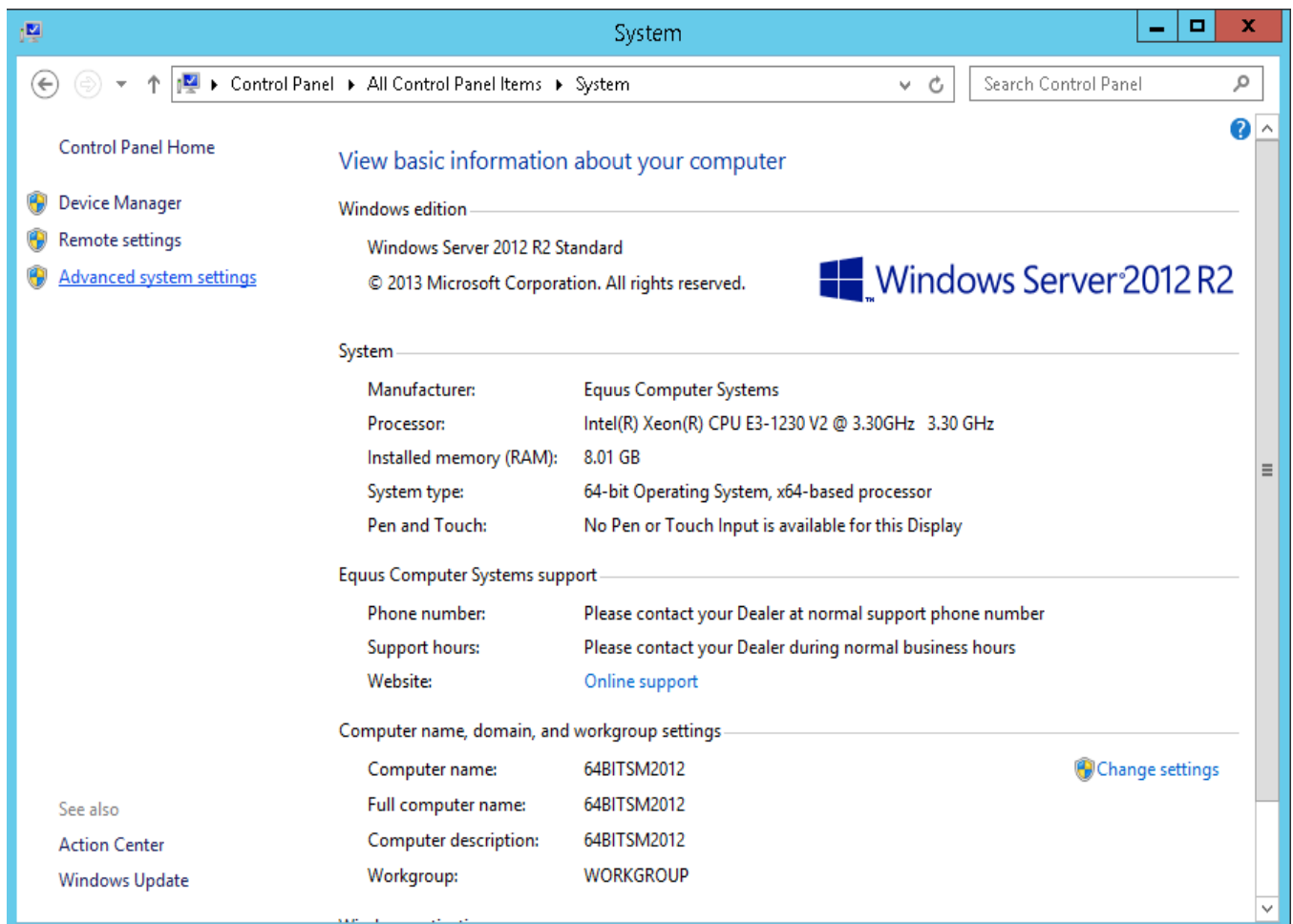
Disable Data Execution Prevention (DEP) and Additional Settings

It is recommended that DEP be completely disabled on all ENCOR PC's. DEP can be turned on for all applications, turned on for only certain applications, or can be completely turned off.

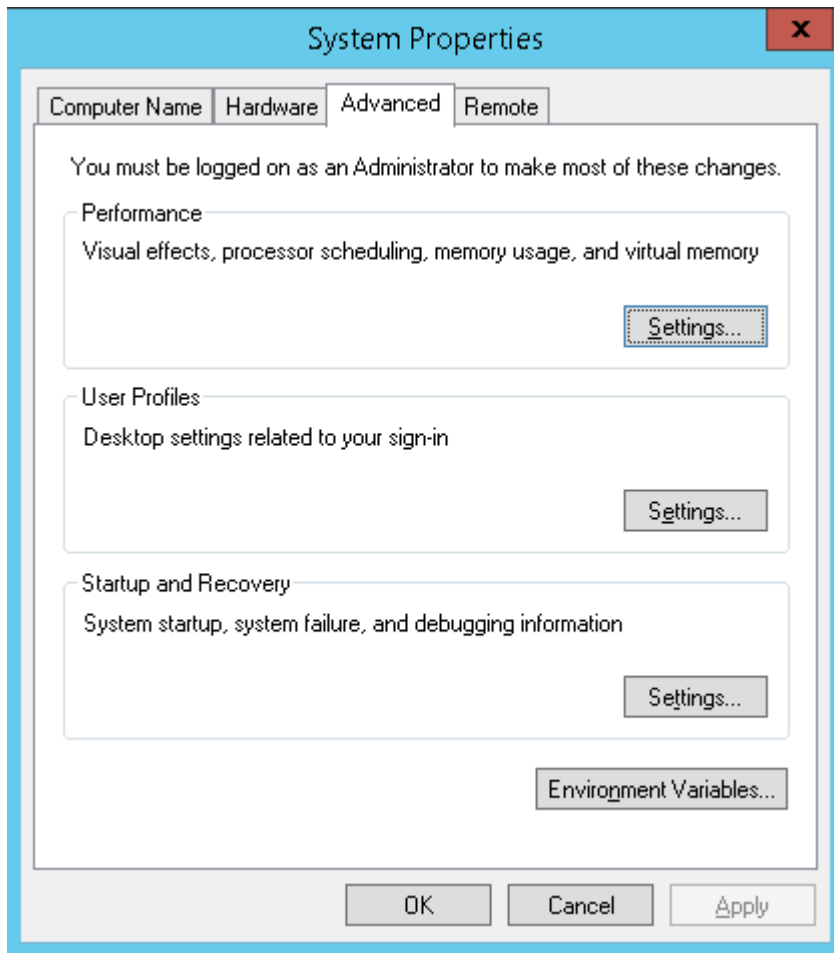
DEP Settings can be changed through the GUI application, but a command level script must be run to completely disable the application.

This is also done to ensure the server can communicate with the network.

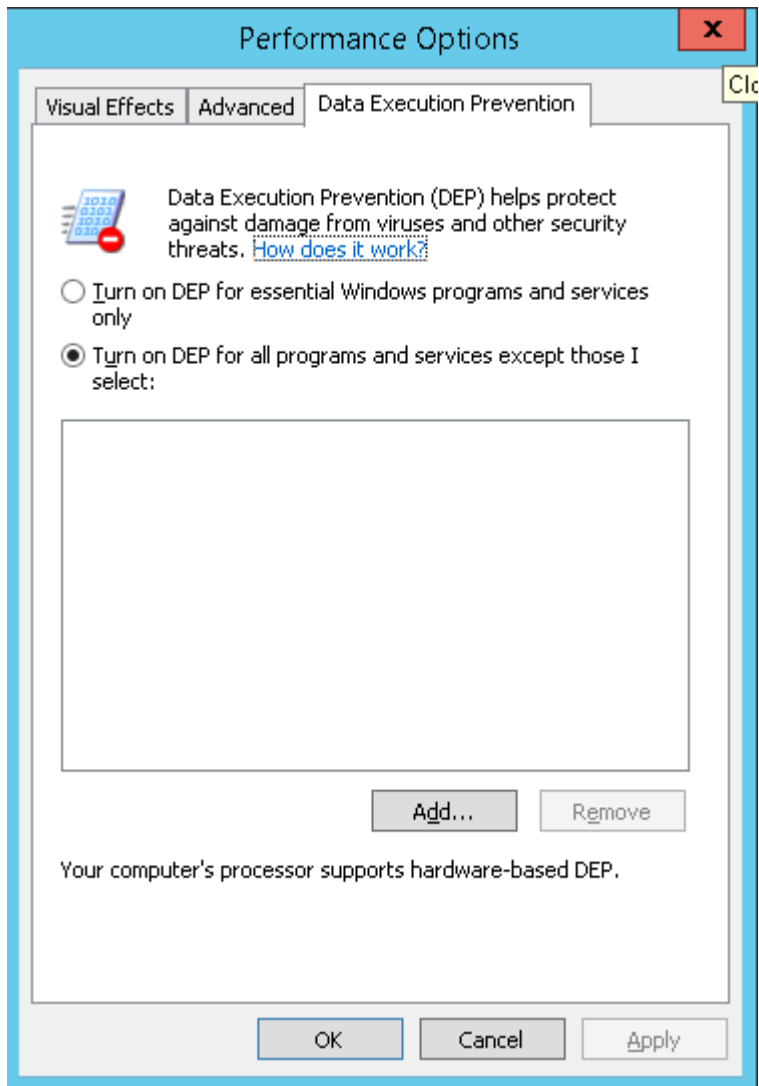
1. Go to **CONTROL PANEL > SYSTEM**, and click on "Advanced System Settings".



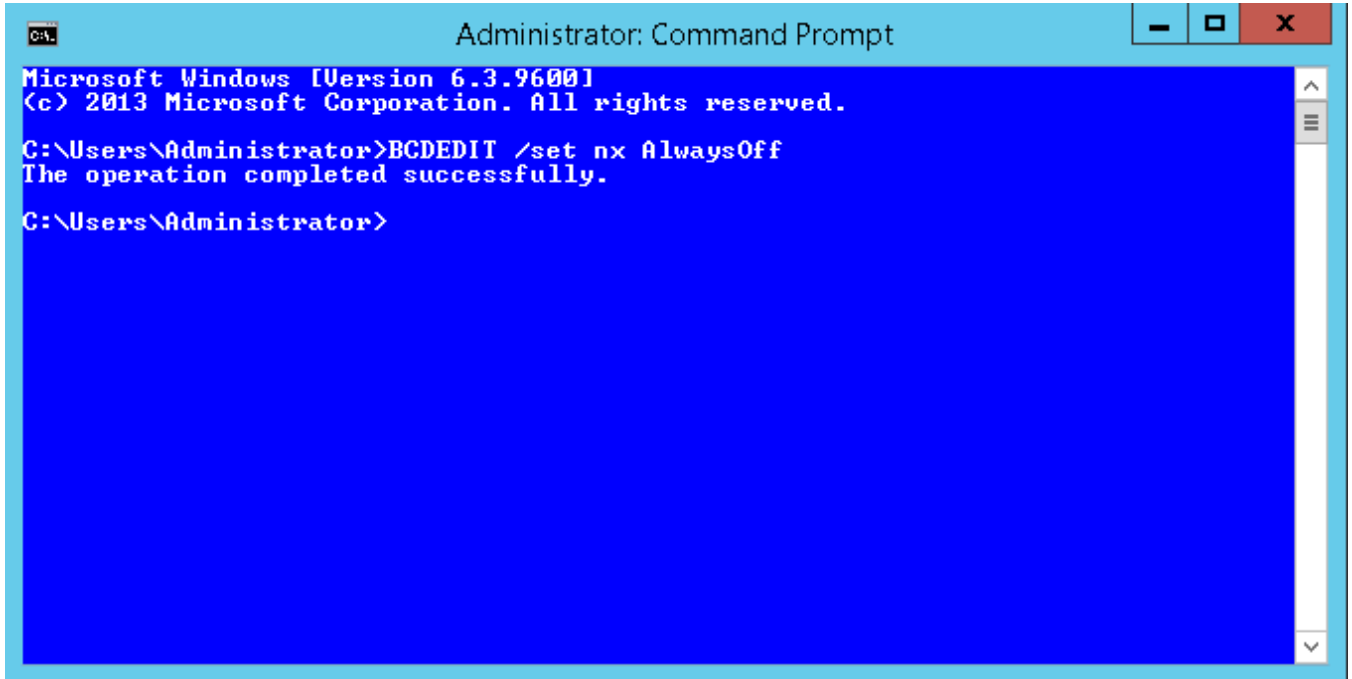
2. Click on the "Advanced" Tab followed by "Setting" in the **Performance Section**.



3. Click on the **Data Execution Prevention** Tab.
 - a. Notice there is not an option to turn it off.



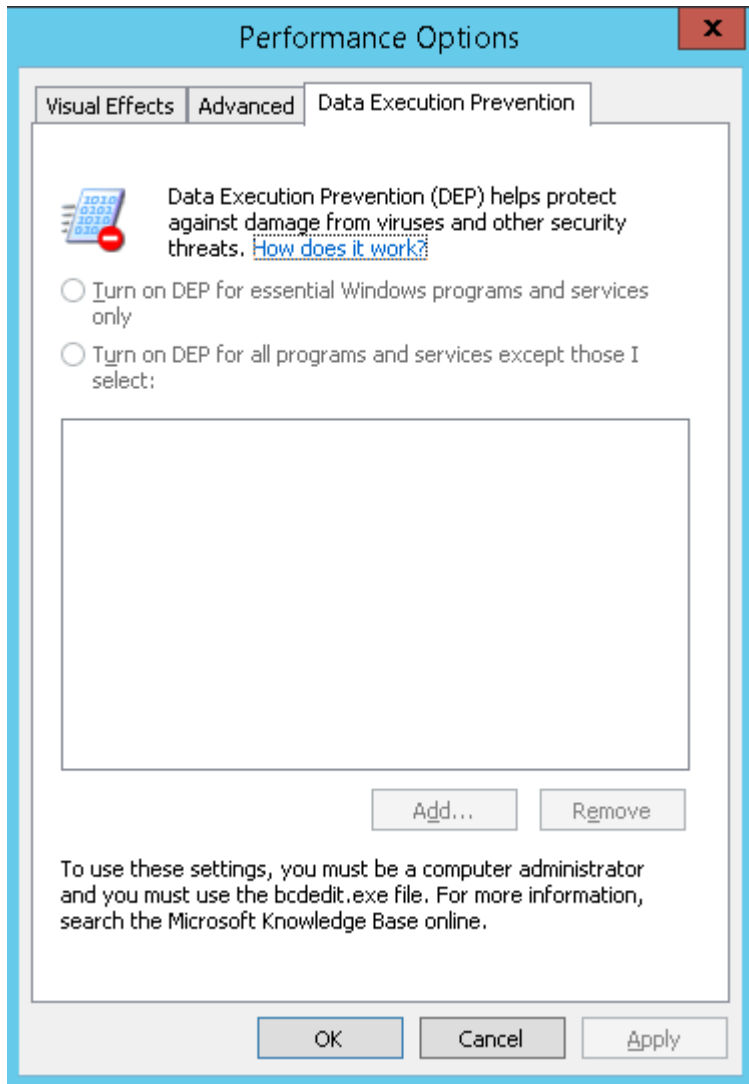
4. Open a COMMAND PROMPT Window and type:
 - a. **bcdedit /set nx AlwaysOff**
 - b. Hit ENTER.
 - c. Message should show that "The operation completed successfully".



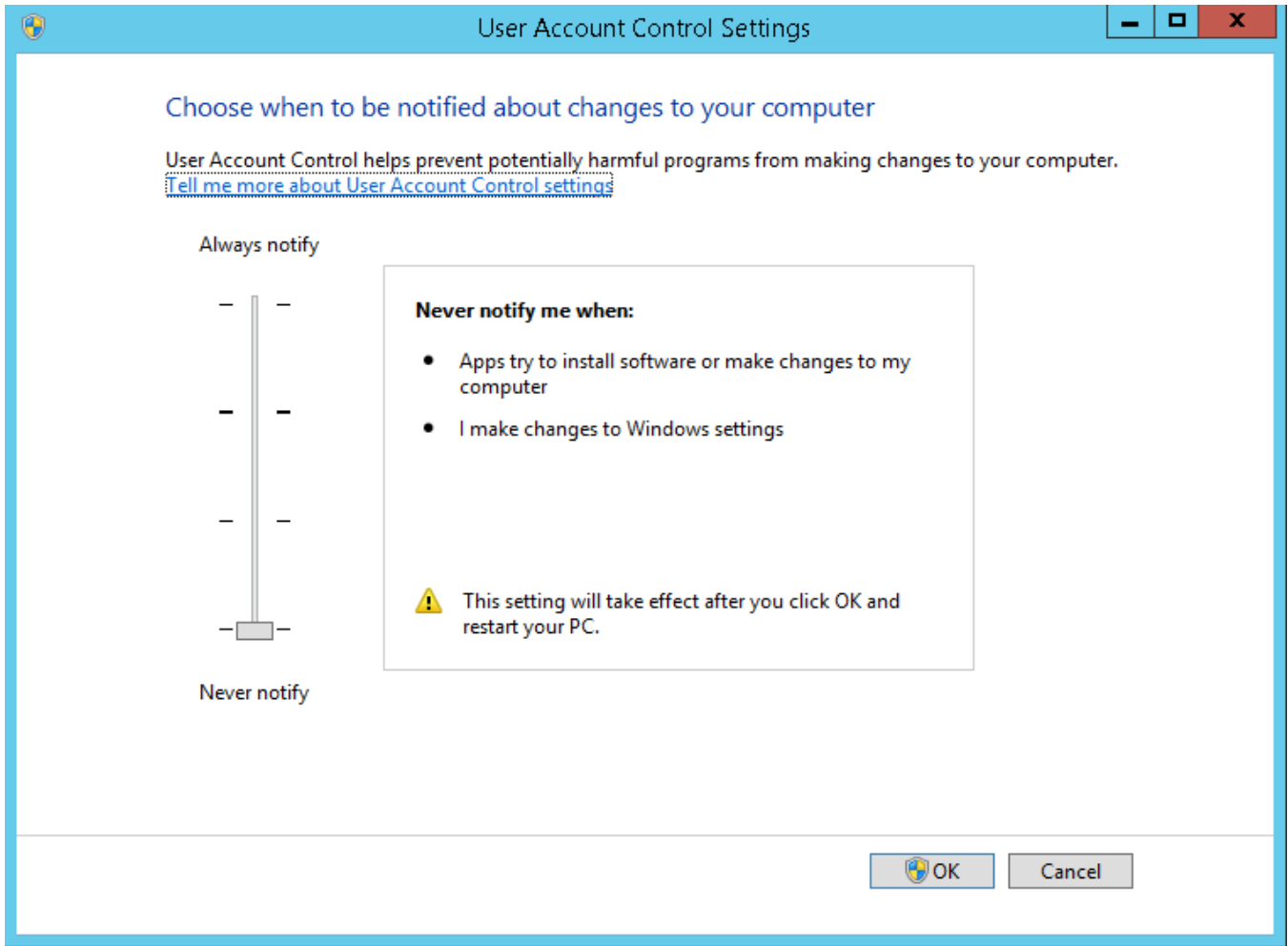
```
Administrator: Command Prompt
Microsoft Windows [Version 6.3.9600]
(c) 2013 Microsoft Corporation. All rights reserved.
C:\Users\Administrator>BCDEDIT /set nx AlwaysOff
The operation completed successfully.
C:\Users\Administrator>
```



5. Reboot Server.
6. Go back to **CONTROL PANEL > SYSTEM > Advanced System Settings**, click on the "Advanced" Tab, then "Settings", and click on the **Data Execution Prevention** Tab.
 - a. Both radio buttons should be greyed out.
 - b. This indicates that DEP is now disabled.



7. In **CONTROL PANEL > USER ACCOUNTS** set as follows:





© NCR Corporation, 2019

NCR endeavors to ensure that the information in this document is correct and fairly stated but does not accept liability for any error or omission.

The development of NCR products and services is continuous and published information may not be up to date. It is important to check the current position with NCR. This document is not part of a contract or license, save insofar as may be expressly agreed.

NCR Corporation
864 Spring Street
Atlanta, GA 30308

P/N 89000940
PIN 45002/074