

ENCOR

- Platform Setup Guide,
■ Microsoft SQL 2017 Server
■ on Existing MFS
■ Version 1.0.1.3
■

ENCOR Platform Setup Guide, Microsoft SQL Server

Date of Issue	Product ID Num.	Part Number	Brief Description
December 2017	45002/074	89000911	1.0.0.0 Release
December 2018	45002/074	89000926	1.0.0.0 Release (Updated)
April 2019	45002/074	89000940	SQL 2017 with 1.0.1.3
April 2019	45002/074	89000941	...on Existing MFS

© Copyright NCR Corporation 1995-2019
All rights reserved

This publication is protected by federal copyright law. This document and its contents are the proprietary, confidential information and property of NCR Corporation ("NCR"). Unauthorized disclosure, reproduction, distribution or use of this document and/or its contents in any form is strictly prohibited. No part of this publication may be reproduced or transmitted into any human or computer language in any form or by any means, stored in a retrieval system, transmitted, redistributed, translated or disclosed to third parties, or de-compiled in any way including, but not limited to, photocopy, photograph, electronic, mechanical, magnetic or manual without the express written permission of NCR or its licensors, if any. This document, notwithstanding the above, may be distributed in electronic or printed form by NCR to personnel who are employed by either (a) a licensee and end user of the subject system of this document or (b) personnel from an authorized NCR Channel Partner or Solution Provider of the subject system of this document. All copies of this document so distributed and/or so authorized, shall contain a full copy of this copyright notice.

NCR has prepared this document as a guide to the proper installation, operation, customization and/or maintenance of NCR products. The drawings and specifications contained herein are the property of NCR and/or its licensors.

NCR endeavors to ensure that the information in this document is correct and fairly stated but does not accept liability for any error or omission. NCR makes no representation or warranties with respect to the contents hereof, and specifically disclaims any implied warranties of merchantability or fitness for a particular purpose or non-infringement. No commitments by NCR or its suppliers are made by or from this documentation which is provided for information only.

Development of NCR products and documentation is continuous: NCR reserves the right to revise this publication and to make changes at any time to the contents hereof or to the products herein described or discussed without notice and without any obligation for NCR to notify any person or organization of such revision or changes. Information published in this document will likely be superseded, and it is recommended that users regularly check for updates and newer versions.

The trademarks NCR, Retailix, StoreNext, ENCOR, ISS45, ScanMaster, R10, ACS, PocketOffice, RPO, RBO, ABO, Connected Payments, ServerEPS, Connected Services, Connected Loyalty, WinEPS and all other NCR product names are registered trademarks or trademarks of NCR; all other trademarks or registered trademarks are the property of their respective owners. Third-party products, services, or company names referenced in this document may be trademarked or copyrighted by their respective owners, and are for identification purposes only. Copyrights, trademarks and license agreements shall be governed and construed in accordance with the laws of the State of New York and the Federal Arbitration Act, and shall benefit NCR, its successors, and assigns.

Address comments and corrections regarding this document to:

Attn: Software Program Director
NCR
864 Spring Street
Atlanta, GA 30308

Table of Contents

1 Prerequisites.....	1
1.1 Minimum Requirements.....	1
1.2 Disable POS_Srv_Manager Windows Service.....	1
2 Upgrading to SQL Server 2017.....	3



1 Prerequisites

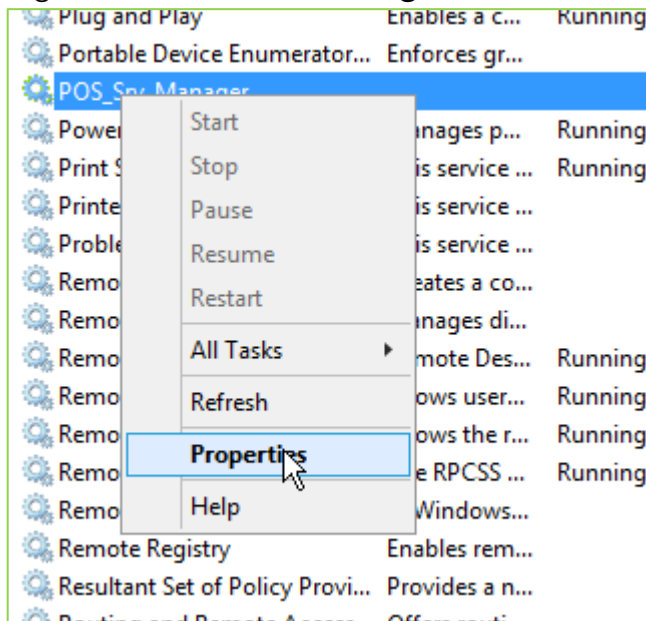
1.1 Minimum Requirements

The following are the minimum requirements that need to be fulfilled, before beginning the upgrade process:

- SQL Server 2008 SP4 or newer
- SQL Server 2008 R2 SP3 or newer
- SQL Server 2012 SP2 or newer
- SQL Server 2014
- SQL Server 2016
- Windows Server 2012 or newer
- .Net 4.6
- 6 GB of available hard-disk space

1.2 Disable POS_Srv_Manager Windows Service

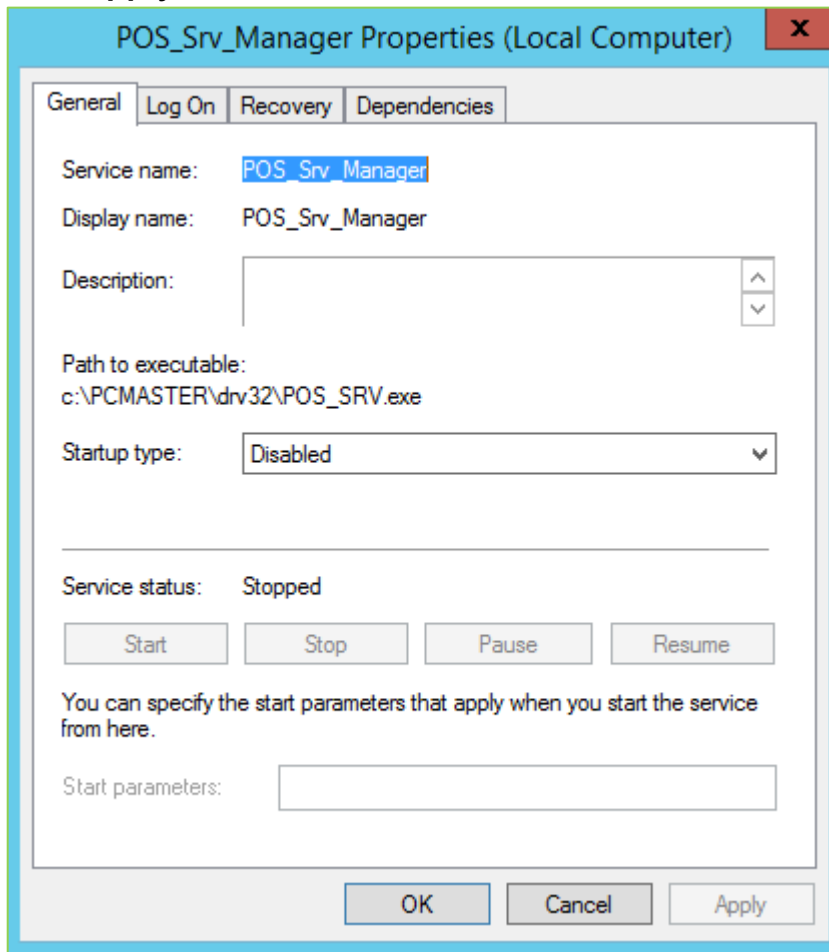
1. Open **Run** in Windows, enter **services.msc** and click **OK**.
2. Right-click **POS_Srv_Manager** service and select **Properties**.



3. Click **Stop**.
4. Set Startup type as **Disabled**.



5. Click **Apply** > **OK**.



6. Close Windows Services console.



2 Upgrading to SQL Server 2017

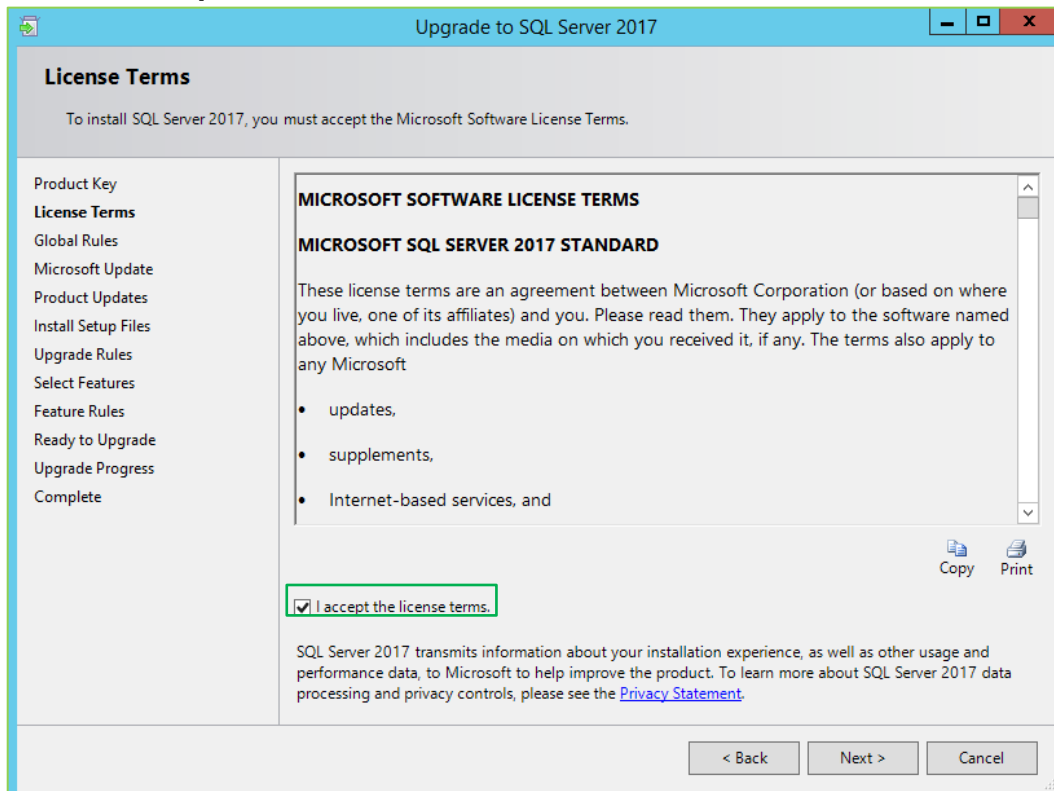
1. Run SQL Server 2017 installer.
2. On SQL Installation Center installation screen, select **Upgrade from a previous version of SQL Server**.



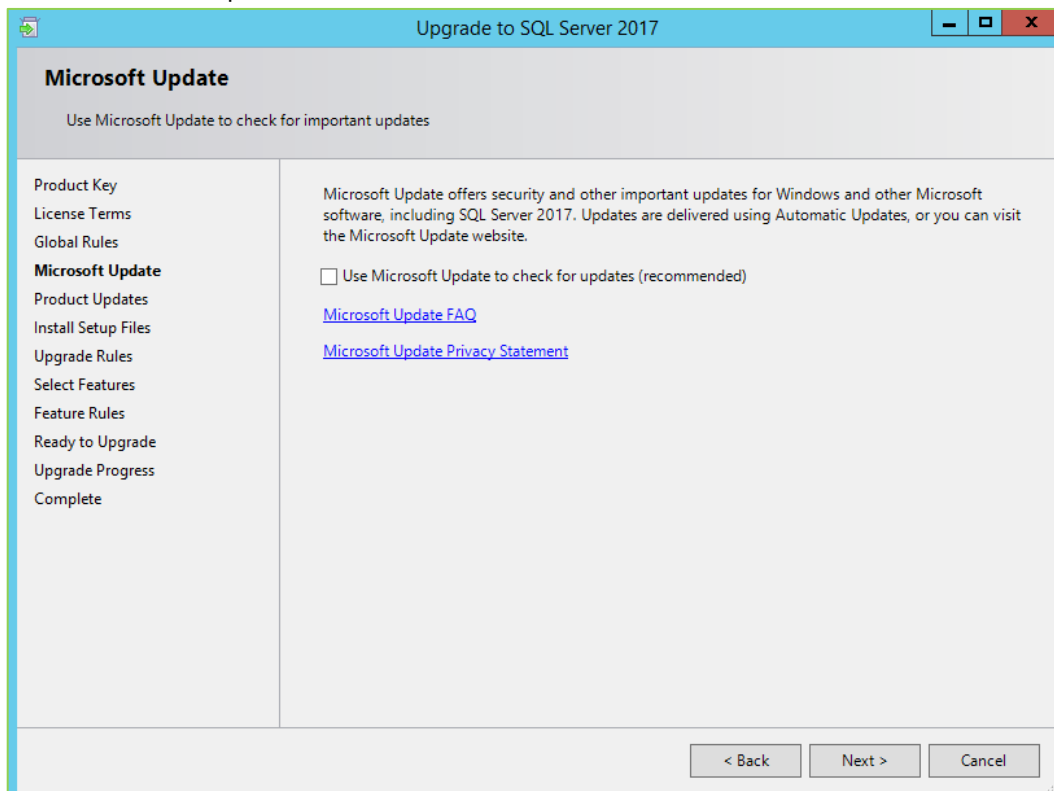
3. Specify the edition or enter the product key and click **Next**.



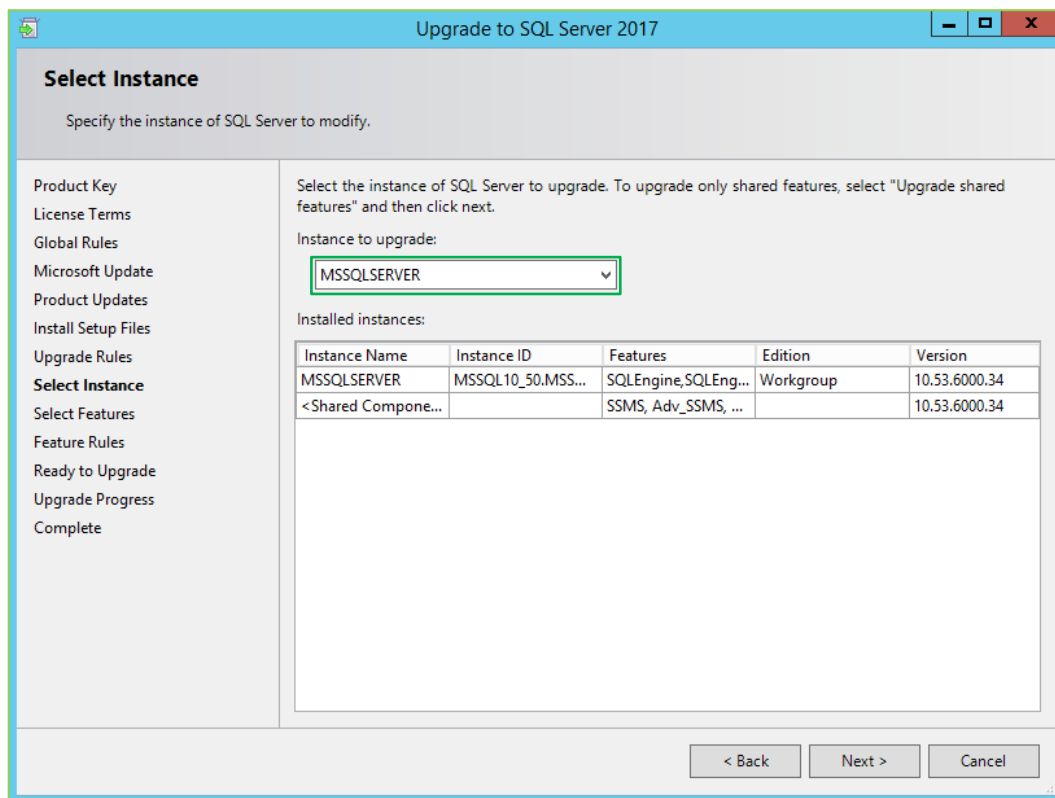
4. Check **I accept the license terms** and click **Next**.



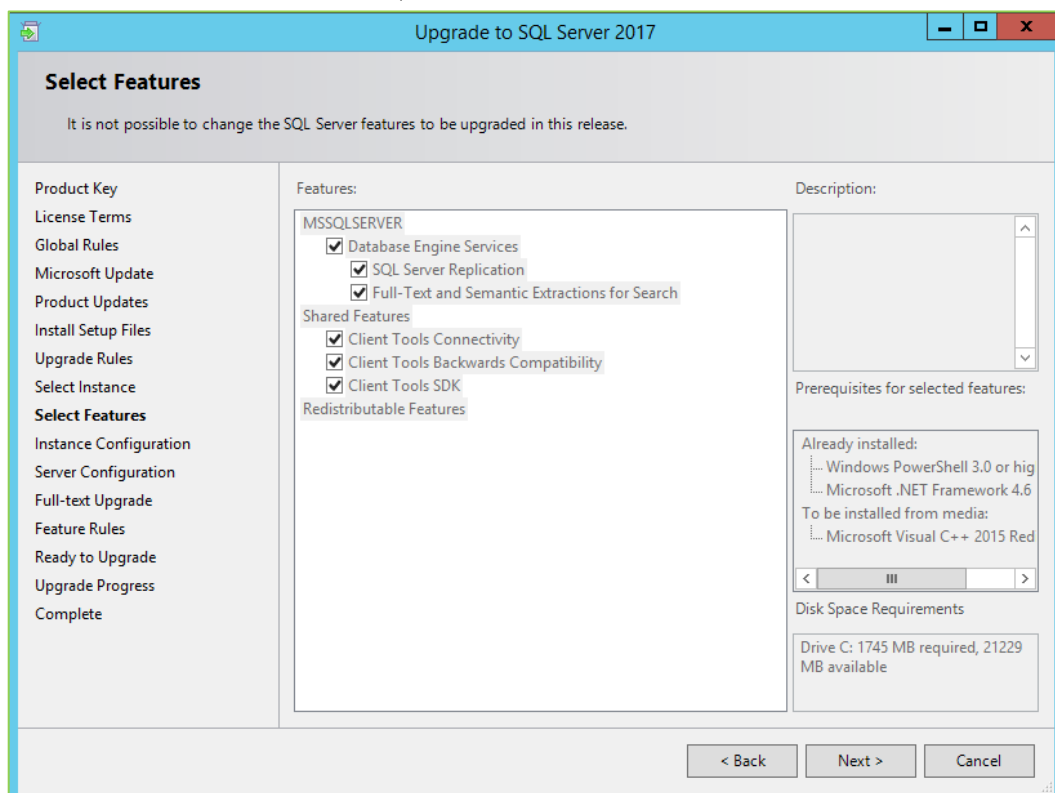
5. On Microsoft Update screen, click **Next**.



6. On Select Instance screen, select **MSSQLSERVER SQL** instance and click **Next**.



7. On Select Features screen, use default selections and click **Next**.



8. On Instance Configuration screen, keep default settings and click **Next**.

Specify the name and instance ID for the instance of SQL Server. Instance ID becomes part of the installation path.

Product Key
License Terms
Global Rules
Microsoft Update
Product Updates
Install Setup Files
Upgrade Rules
Select Instance
Select Features
Instance Configuration
Server Configuration
Full-text Upgrade
Feature Rules
Ready to Upgrade
Upgrade Progress
Complete

Default instance
 Named instance:

Instance ID:

SQL Server directory: c:\Program Files\Microsoft SQL Server\MSSQL14.MSSQLSERVER

Installed instances:

Instance Name	Instance ID	Features	Edition	Version
MSSQLSERVER	MSSQL10_50.MSSQ...	SQLEngine,SQLEn...	Workgroup	10.53.6000.34
<Shared Compone...		SSMS, Adv_SSMS, ...		10.53.6000.34

< Back Next > Cancel

9. On Server Configuration screen, click **Next**.

Specify the service accounts and collation configuration.

Product Key
License Terms
Global Rules
Microsoft Update
Product Updates
Install Setup Files
Upgrade Rules
Select Instance
Select Features
Instance Configuration
Server Configuration
Full-text Upgrade
Feature Rules
Ready to Upgrade
Upgrade Progress
Complete

Service Accounts

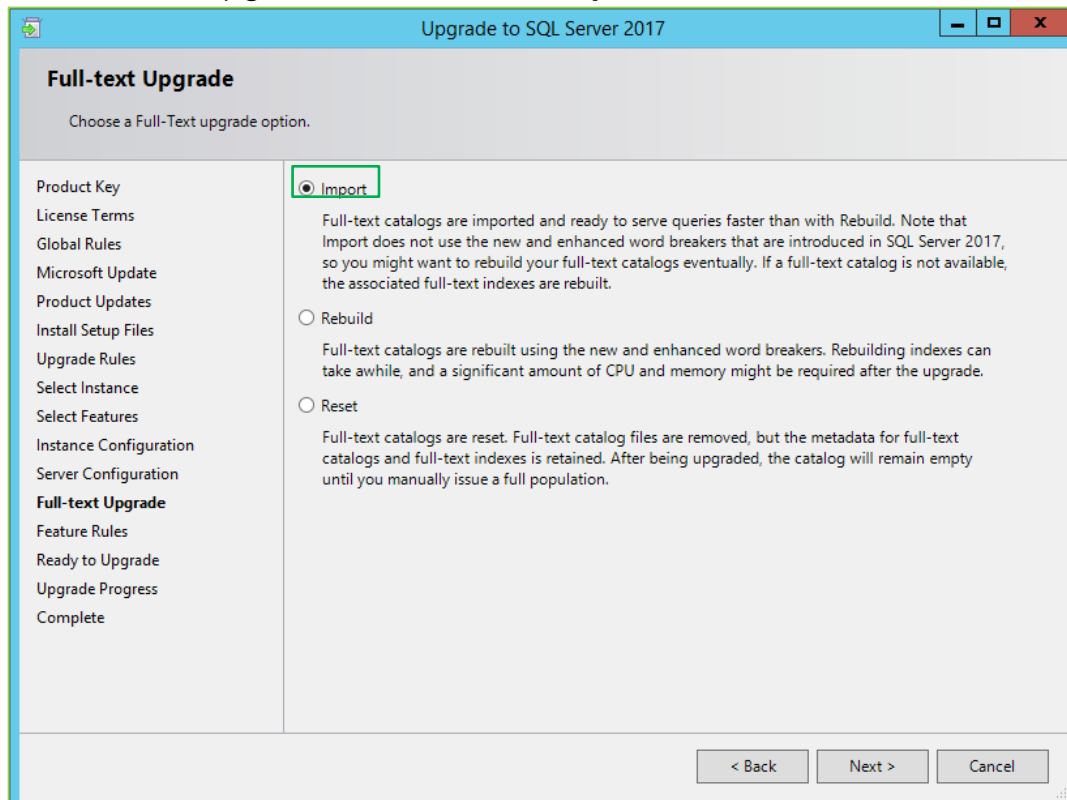
Microsoft recommends that you use a separate account for each SQL Server service.

Service	Account Name	Password	Startup Type
SQL Full-text Filter Daemon Launc...	NT Service\MSSQLFDLa...		Manual

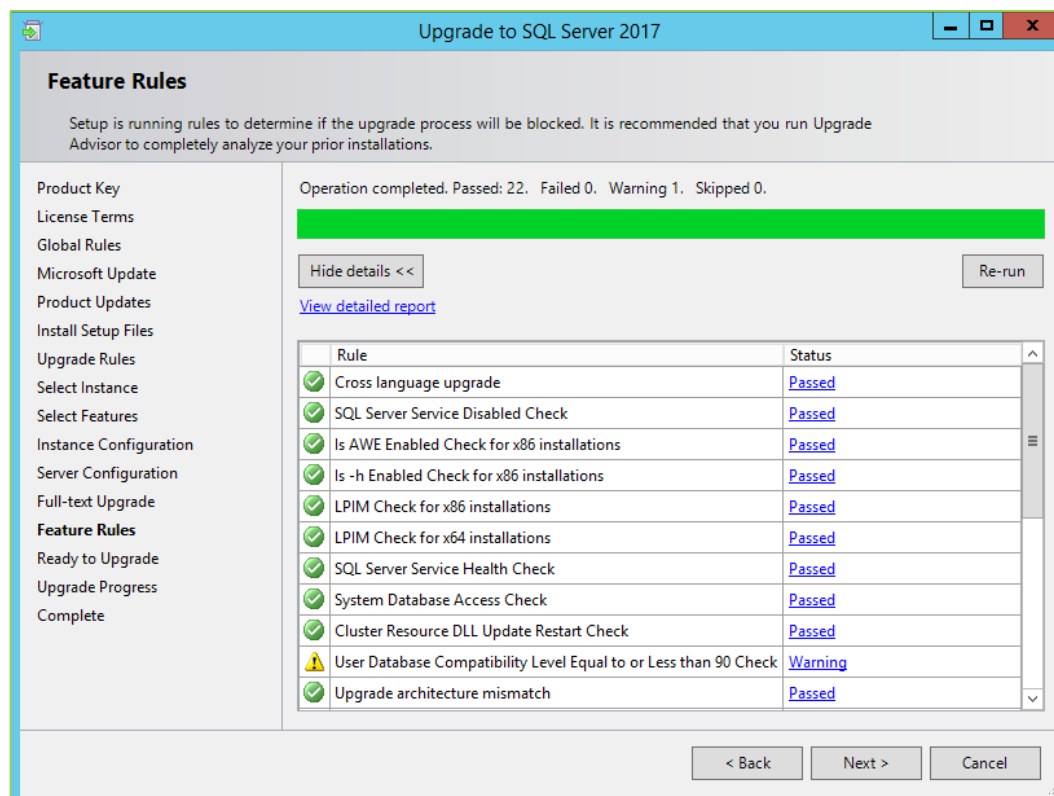
< Back Next > Cancel



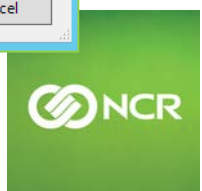
10. On Full-Text Upgrade screen, select **Import** and click **Next**.



11. If all Rules passed on Feature Rules screen, click **Next**.
 a. If not, select "Re-run".



12. Click **Upgrade**.



13. Once the upgrade is completed, click **Close**.
14. Set POS_Srv_Manager Windows service back to **automatic** for the Startup type (do not start the service) and reboot the machine.





© NCR Corporation, 2019

NCR endeavors to ensure that the information in this document is correct and fairly stated but does not accept liability for any error or omission.

The development of NCR products and services is continuous and published information may not be up to date. It is important to check the current position with NCR. This document is not part of a contract or license, save insofar as may be expressly agreed.

NCR Corporation
864 Spring Street
Atlanta, GA 30308

P/N 89000941
PIN 45002/074