

# ENCOR

- Platform Setup Guide,
- Microsoft Server 2012 R2v1
- Version 1.0.0.0
- 
- 



## ENCOR Platform Setup Guide, Microsoft Server 2012 R2v1

Date of Issue	Product ID Num.	Part Number	Brief Description
December 2017	45002/074	89000909	1.0.0.0 Release

©Copyright NCR Corporation 1995-2017  
All rights reserved

This publication is protected by federal copyright law. This document and its contents are the proprietary, confidential information and property of NCR Corporation ("NCR"). Unauthorized disclosure, reproduction, distribution or use of this document and/or its contents in any form is strictly prohibited. No part of this publication may be reproduced or transmitted into any human or computer language in any form or by any means, stored in a retrieval system, transmitted, redistributed, translated or disclosed to third parties, or de-compiled in any way including, but not limited to, photocopy, photograph, electronic, mechanical, magnetic or manual without the express written permission of NCR or its licensors, if any. This document, notwithstanding the above, may be distributed in electronic or printed form by NCR to personnel who are employed by either (a) a licensee and end user of the subject system of this document or (b) personnel from an authorized NCR Channel Partner or Solution Provider of the subject system of this document. All copies of this document so distributed and/or so authorized, shall contain a full copy of this copyright notice.

NCR has prepared this document as a guide to the proper installation, operation, customization and/or maintenance of NCR products. The drawings and specifications contained herein are the property of NCR and/or its licensors.

NCR endeavors to ensure that the information in this document is correct and fairly stated but does not accept liability for any error or omission. NCR makes no representation or warranties with respect to the contents hereof, and specifically disclaims any implied warranties of merchantability or fitness for a particular purpose or non-infringement. No commitments by NCR or its suppliers are made by or from this documentation which is provided for information only.

Development of NCR products and documentation is continuous: NCR reserves the right to revise this publication and to make changes at any time to the contents hereof or to the products herein described or discussed without notice and without any obligation for NCR to notify any person or organization of such revision or changes. Information published in this document will likely be superseded, and it is recommended that users regularly check for updates and newer versions.

The trademarks NCR, Retailix, StoreNext, ISS45, ScanMaster, R10, ACS, PocketOffice, RPO, RBO, ABO, Connected Payments, ServerEPS, Connected Services, Connected Loyalty, WinEPS and all other NCR product names are registered trademarks or trademarks of NCR; all other trademarks or registered trademarks are the property of their respective owners. Third-party products, services, or company names referenced in this document may be trademarked or copyrighted by their respective owners, and are for identification purposes only. Copyrights, trademarks and license agreements shall be governed and construed in accordance with the laws of the State of New York and the Federal Arbitration Act, and shall benefit NCR, its successors, and assigns.

Address comments and corrections regarding this document to:

**Attn: Software Program Director**  
**NCR**  
**797 Commonwealth Drive**  
**Warrendale, PA 15086**

## **Preface**

This document is intended as a broad overview for configuring an MFS1 2012 R2 *prior to installing ENCOR.*

---

# Table of Contents

---

<i>Chapter 1:</i>	Server 2012 R2 Installation.....	1-1
1.1	Installing Server 2012 R2.....	1-1
<i>Chapter 2:</i>	Windows Server Pre-Requisites.....	2-9
2.1.1	Change User Control Account Settings .....	2-10
<i>Chapter 3:</i>	SQL Server 2008 R2 WorkGroup .....	3-14
1.1	Installing .net Framework 3.5.....	3-14
1.2	SQL Server Installation.....	3-17
<i>Chapter 4:</i>	SQL Backward Compatible Setup .....	4-30
1.1	Backwards Compatibility (SQLDMO) SQLServer2005_BC.msi... 4-30	
<i>Chapter 5:</i>	Enable Named Pipes.....	5-34
<i>Chapter 6:</i>	Disable DEP .....	6-36
1.1	Disable Data Execution Prevention (DEP) .....	6-36

---

# Revision Record

---

Issue	Date	Remarks
A	Dec 2017	First issue



# Chapter 1: Server 2012 R2 Installation

## 1.1 Installing Server 2012 R2

1. On the Server 2012 R2 CD, select **setup**.

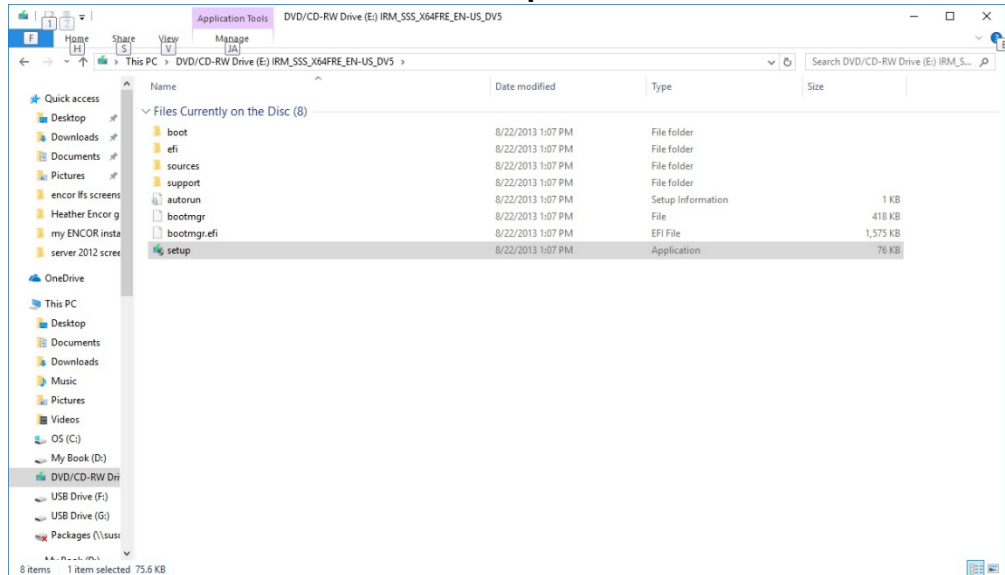


Figure 1-1. Server 2012 R2 CD - setup

2. Verify screen and click **Next**.

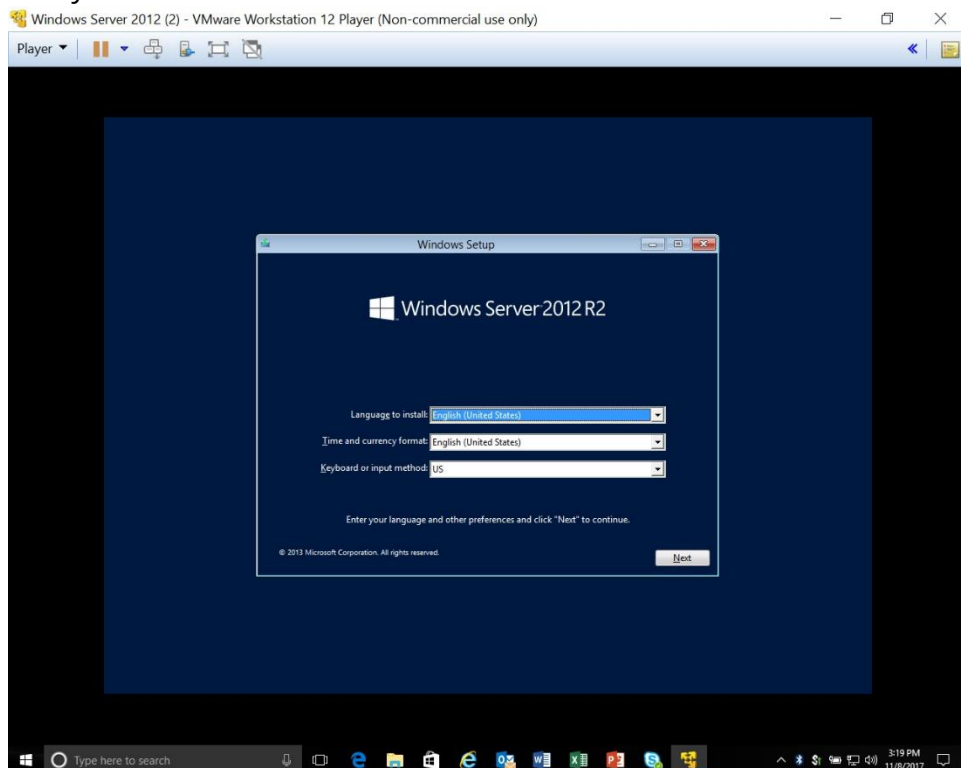


Figure 1-2. Windows Server 2012 R2 - Setup

3. Click **Install Now**.

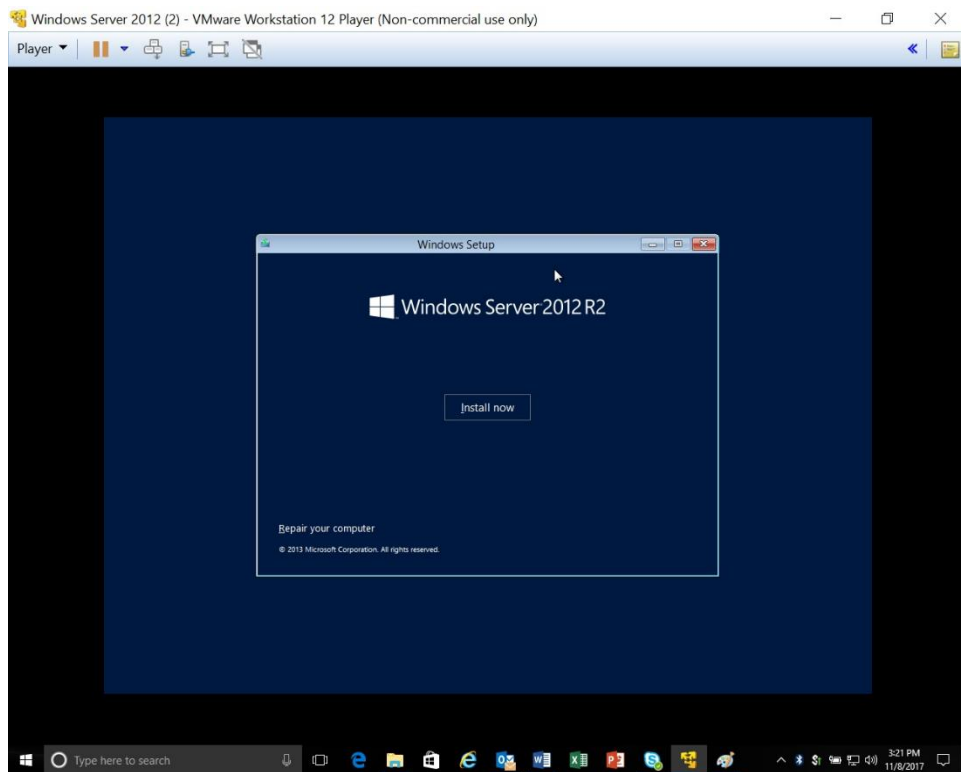


Figure 1-3. Windows Server 2012 R2 - Install Now

4. Enter product key and click **Next**.

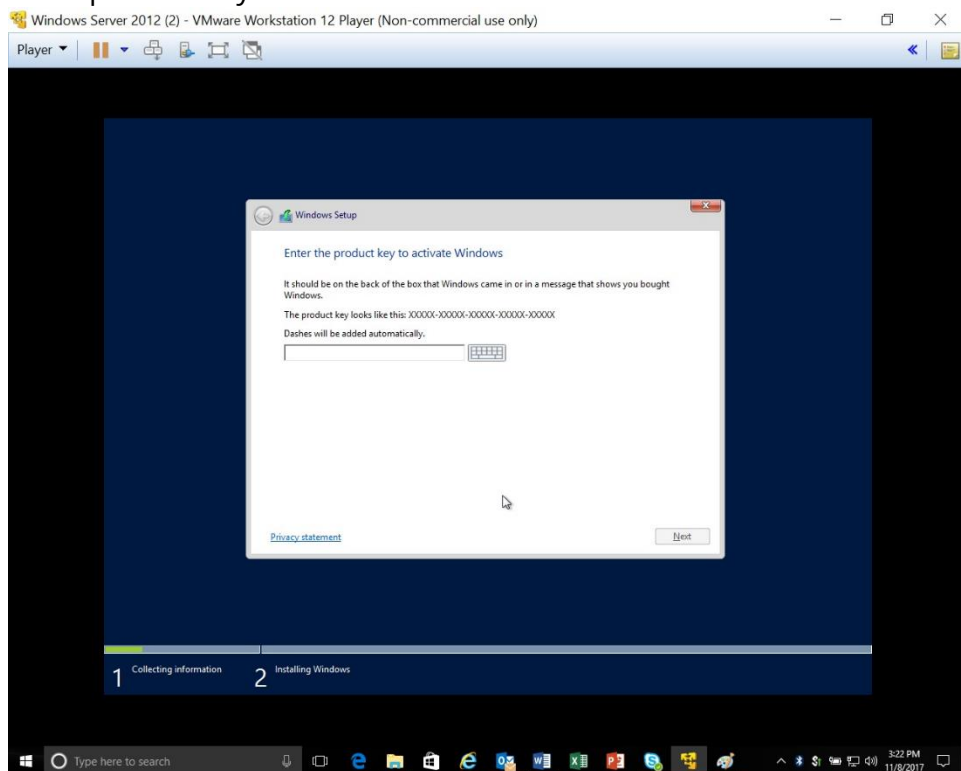


Figure 1-4. Windows Server 2012 R2 - Product Key

5. Be sure to select **(Server with a GUI)**. Click **Next**.

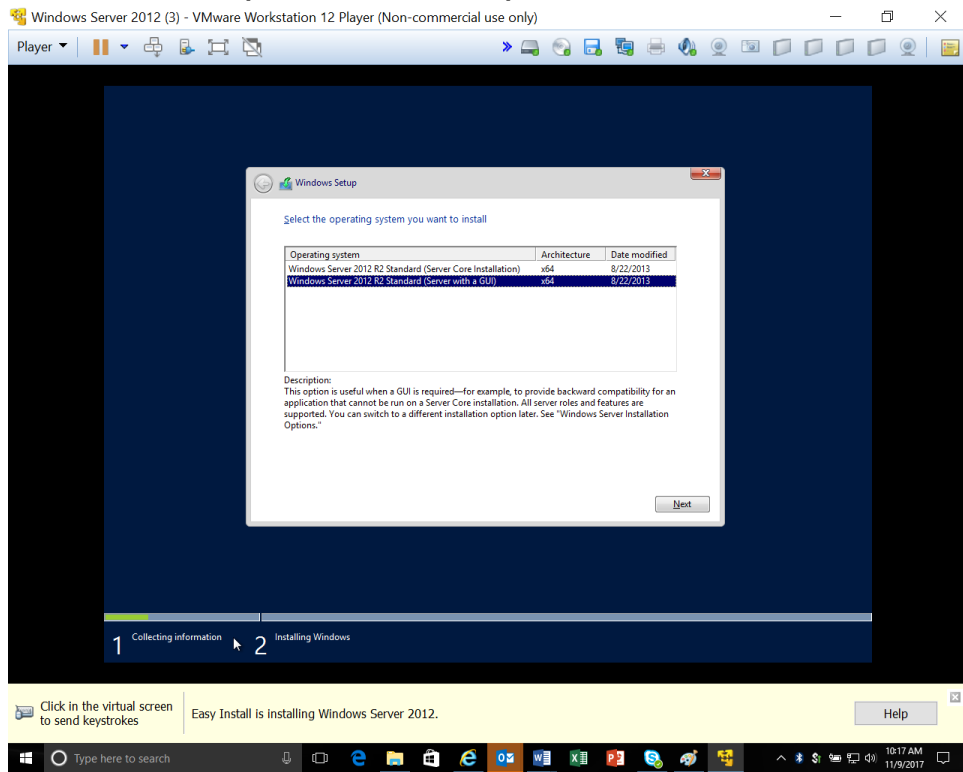


Figure 1-5. Windows Server 2012 R2 - System to Install

6. Server 2012 will now begin installation.

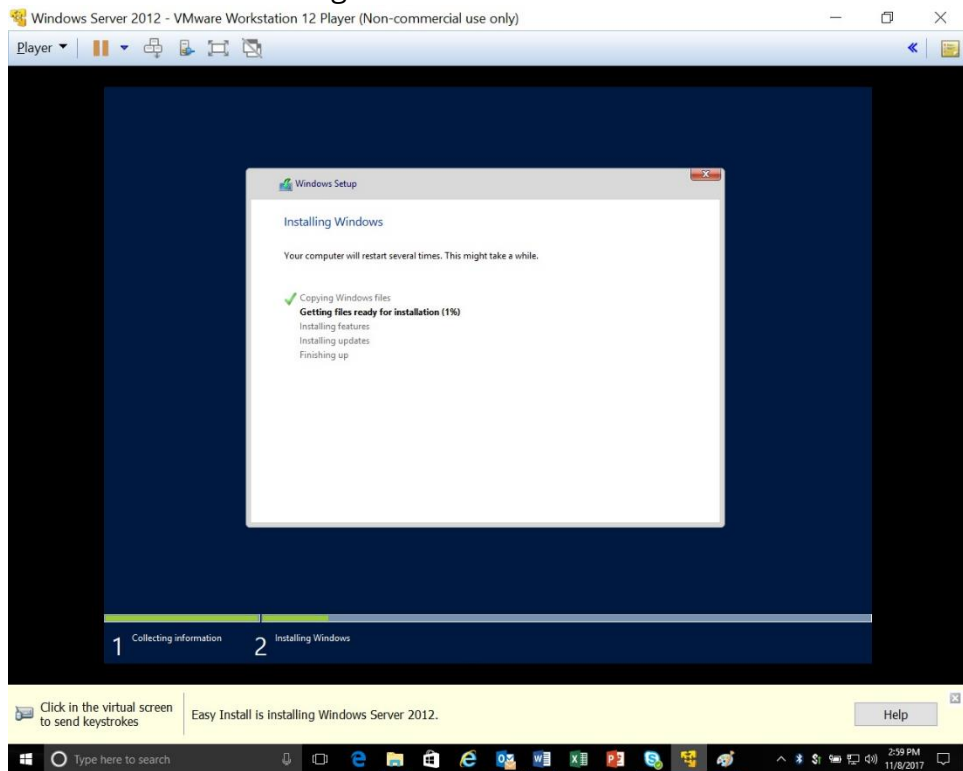


Figure 1-6. Windows Server 2012 R2 - Installation Begins

7. Click on **Accept the license agreement** and click **Next**.

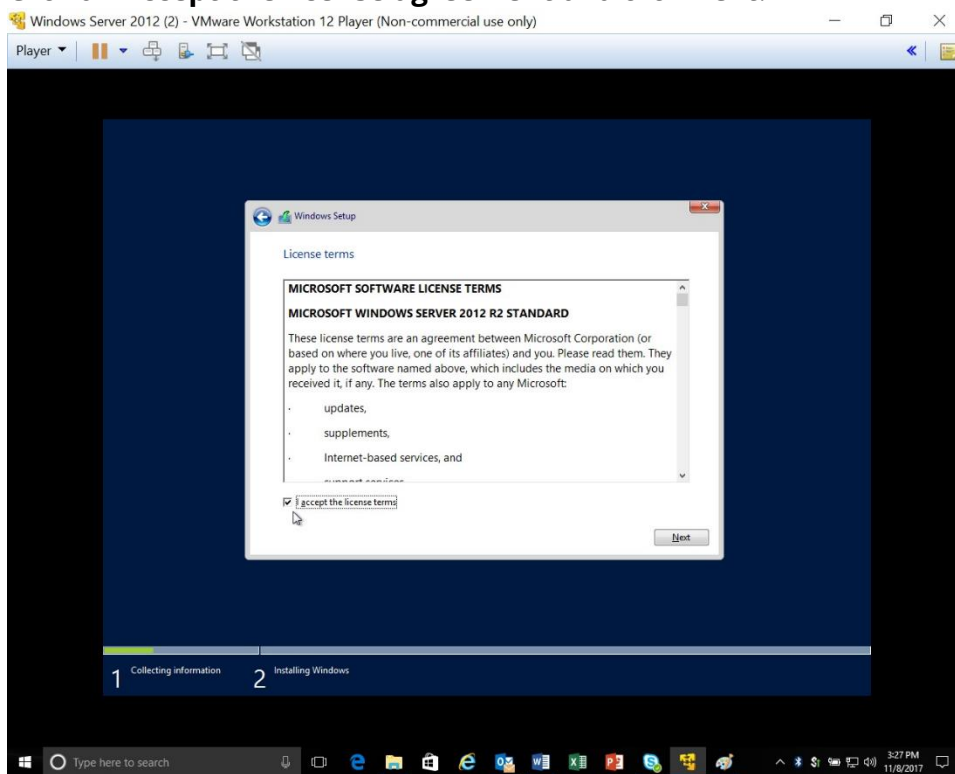


Figure 1-7. Windows Server 2012 R2 - Accept License Agreement

8. Select destination.

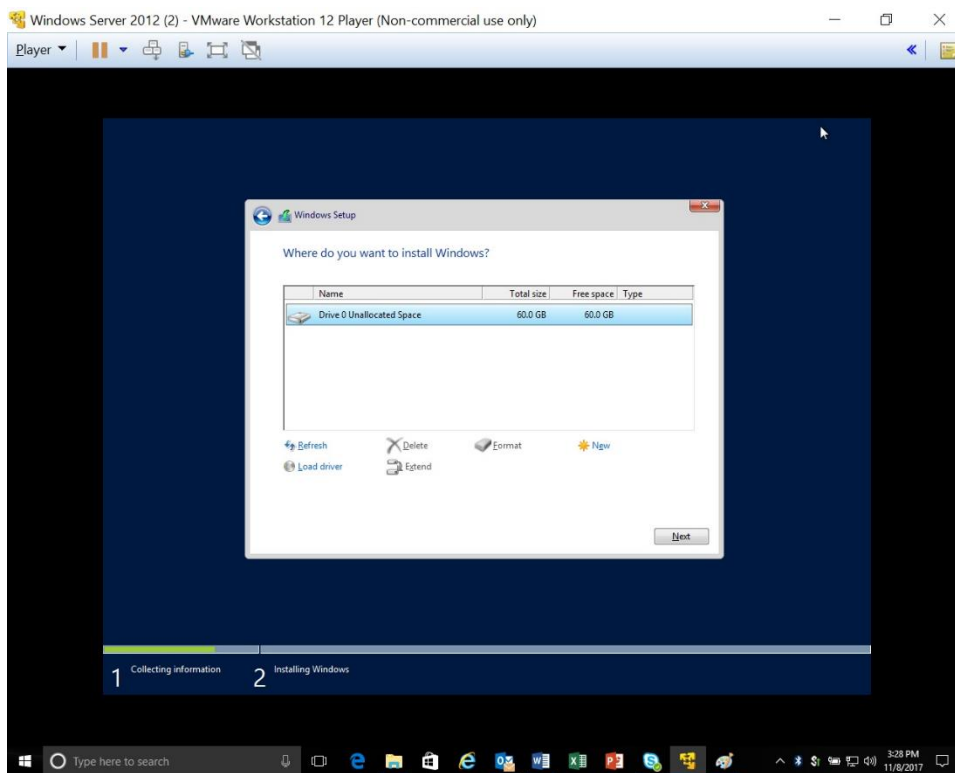


Figure 1-8. Windows Server 2012 R2 - Select Destination

9. Set as new and format the drive.

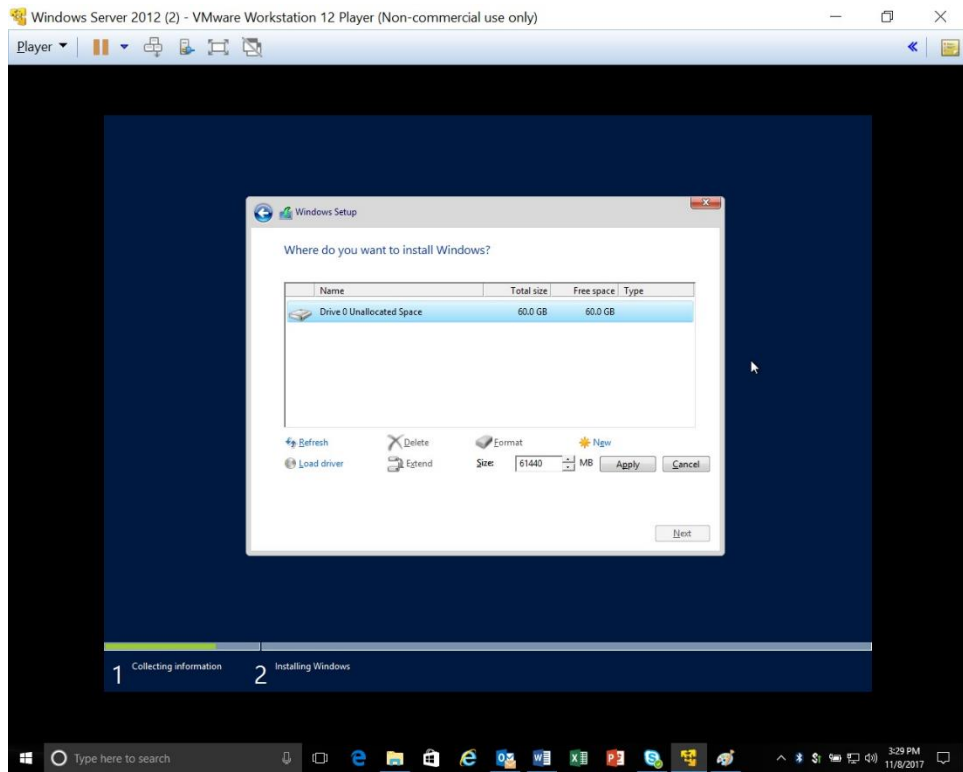


Figure 1-9. Windows Server 2012 R2 - Format Drive

10. Click OK.

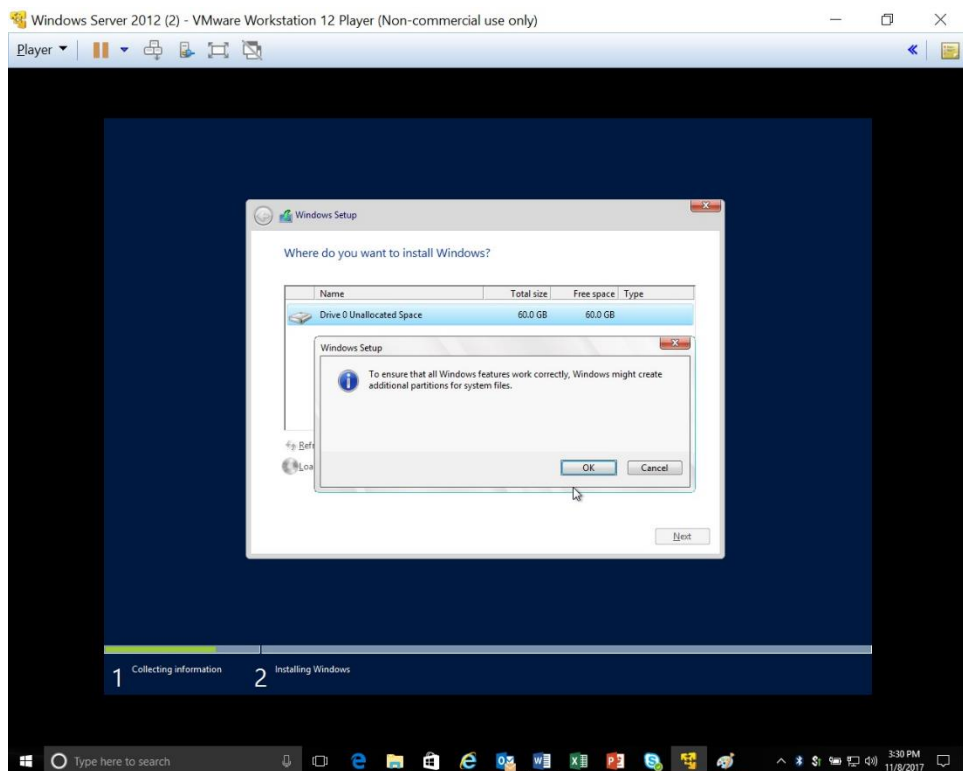


Figure 1-10. Windows Server 2012 R2 - Information Pop-Up

11. Click **OK**.

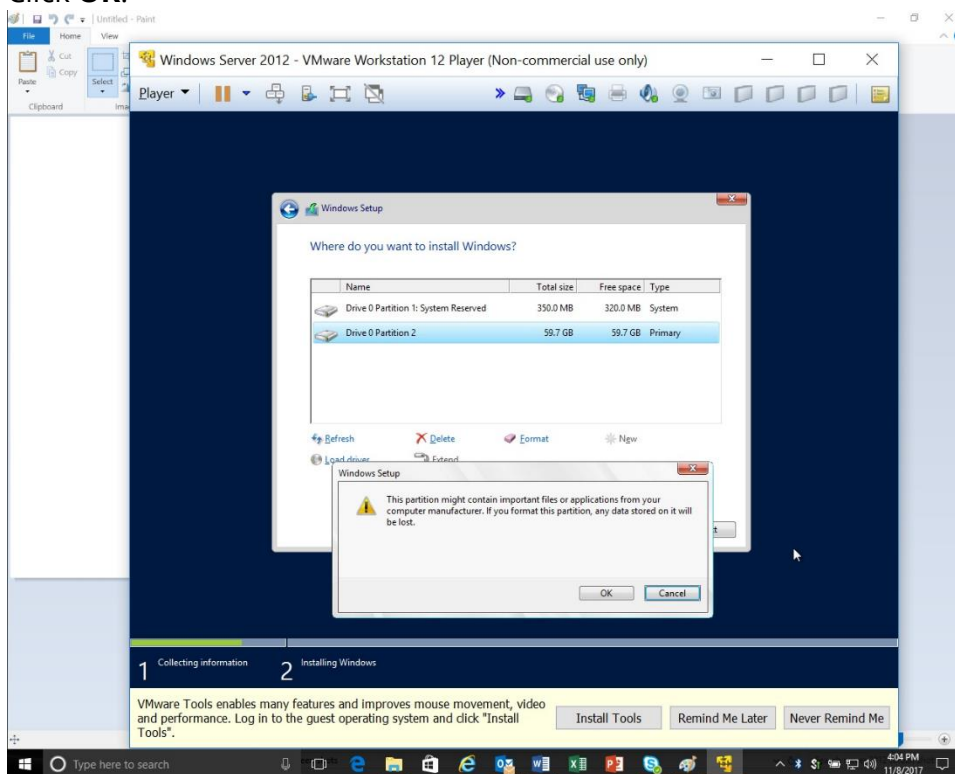


Figure 1-11. Windows Server 2012 R2 - Caution Pop-Up

12. Installation process begins.

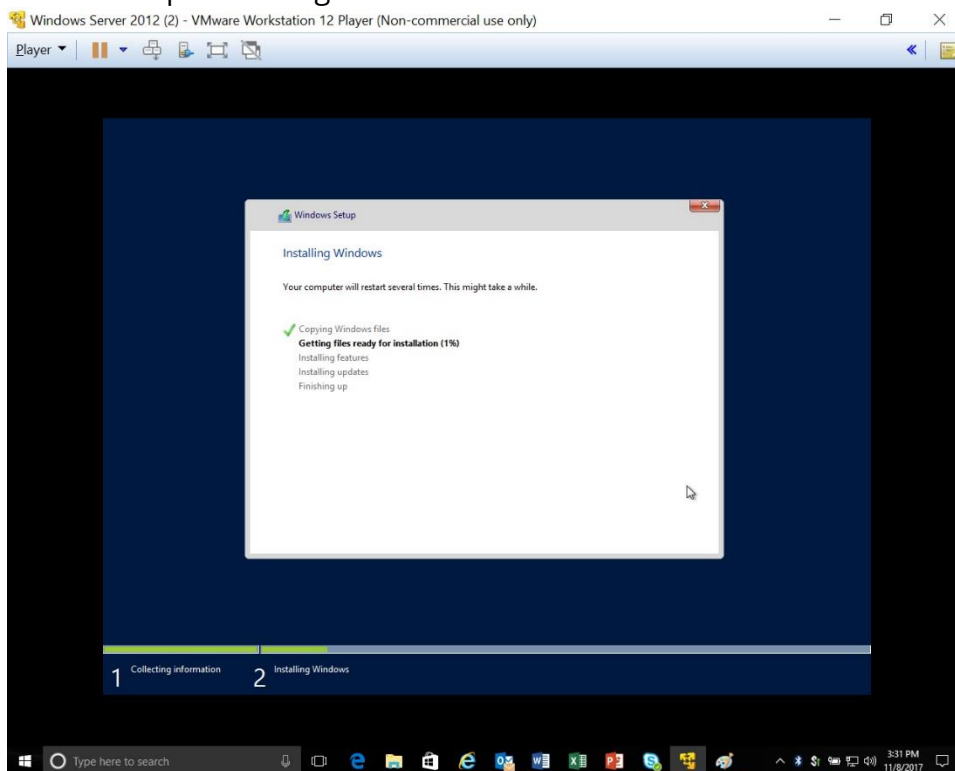


Figure 1-12. Windows Server 2012 R2 - Installation Begins

### 13. System will re-boot.

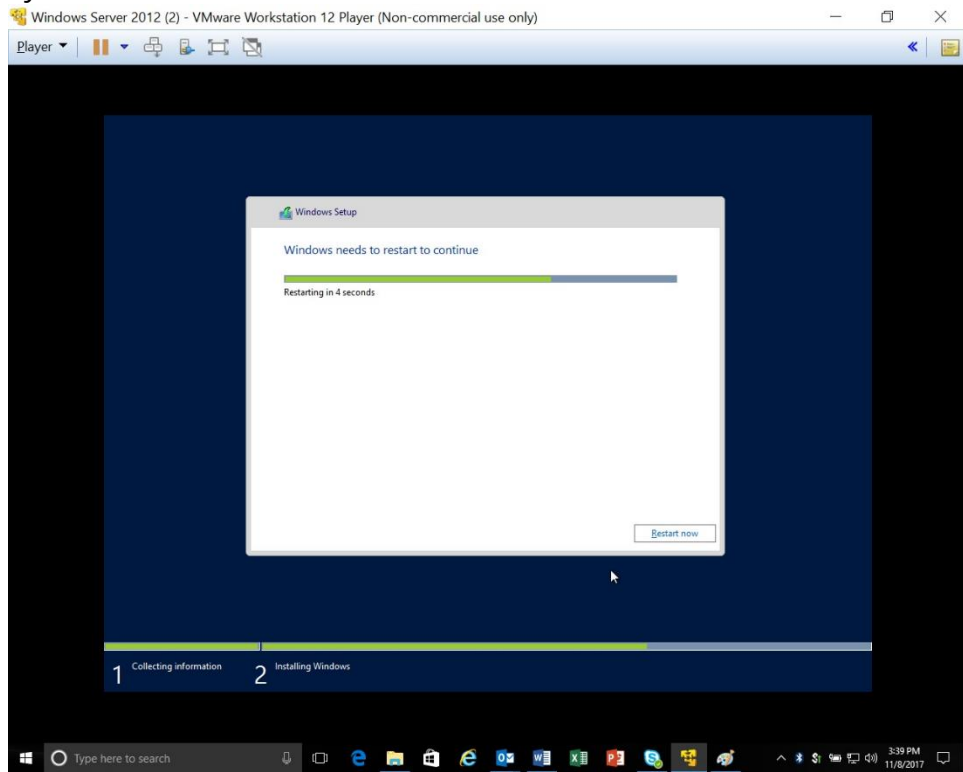


Figure 1-13. Windows Server 2012 R2 - System Restart

### 14. Once installation completes, you will be prompted for an administrator password. This password will be required for further installation processes.

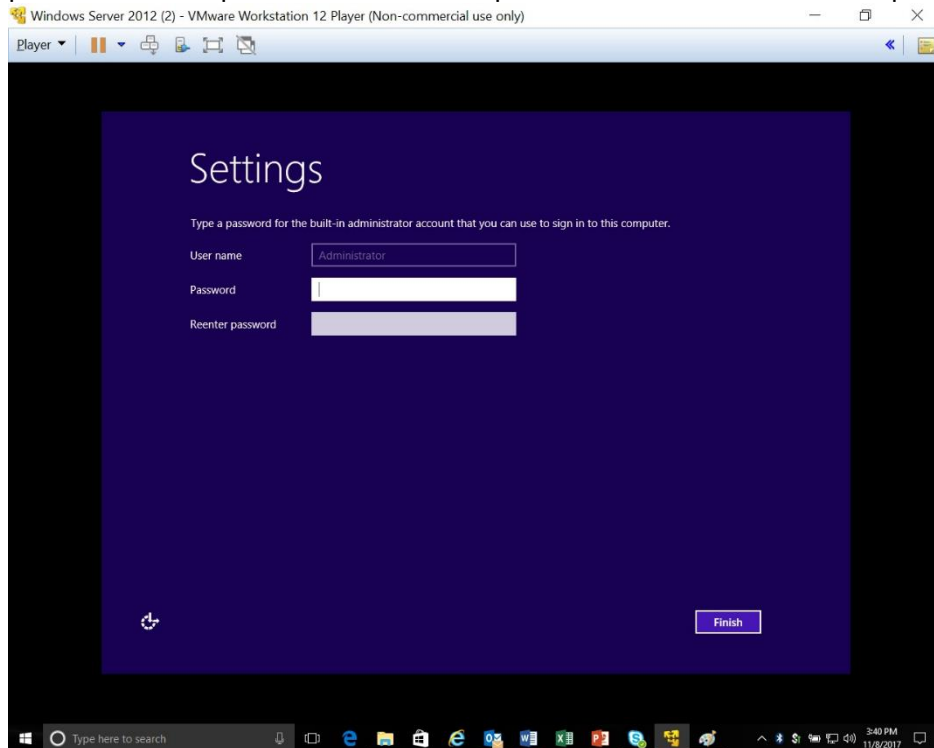


Figure 1-14. Windows Server 2012 R2 - Administrator Password

15. PC will re-boot and display the sign on screen. Log on with the credentials you entered, and proceed with the next part of the total installation.

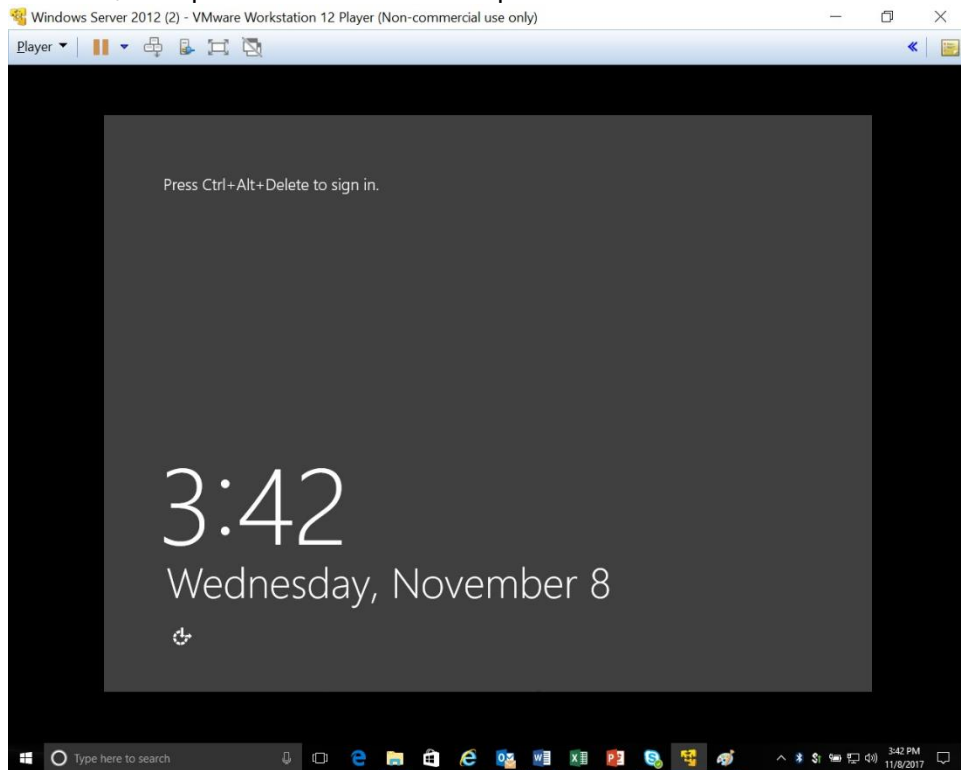


Figure 1-15. Windows Server 2012 R2 - Log On

## Chapter 2: Windows Server Pre-Requisites

Once Server 2012 is installed, perform the following:

1. By default, the Administrator Account is enabled in Server 2012 R2, therefore you must verify:

a) Click on **START** or **RUN**, enter **SECPOL.MSC** in the Search Box and press **ENTER**.

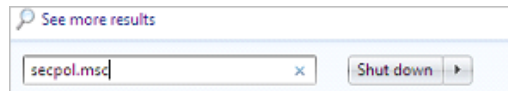


Figure 2-1. Search Box

b) The Local Security Policy Screen will open:

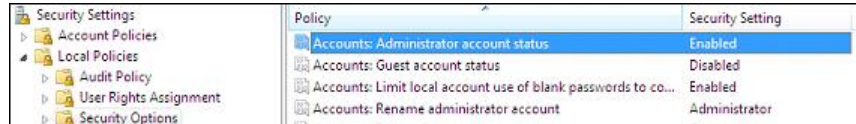


Figure 2-2. Local Security Policy

c) Click on **Local Policy > Security Options** and select **Enabled for Accounts: Administrator account status**. Verify it is enabled.

2. Change view to **Small icons** if desired:



Figure 2-3. Computer Settings - Small icons

### 2.1.1 Change User Control Account Settings

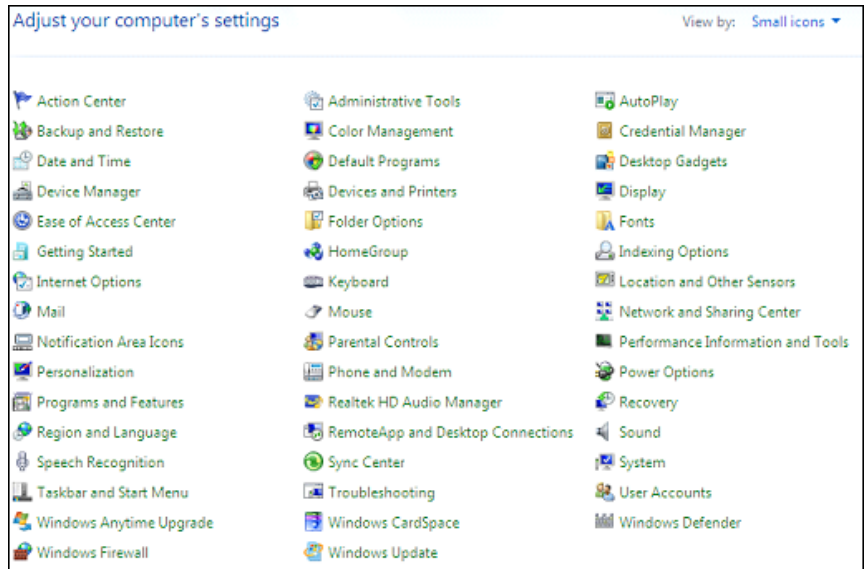


Figure 2-4. Control Panel

3. Click on **User Accounts**.

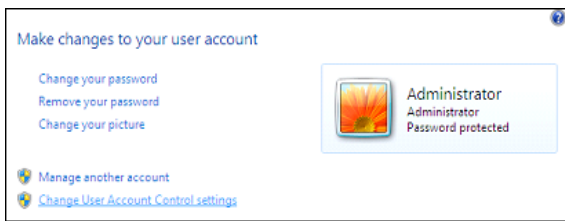


Figure 2-5. Control Panel - User Accounts

4. Click **Change User Account Control settings**.
5. Disable User Account Control by moving the slide bar all the way to the bottom (**Never notify**) and click **OK**.

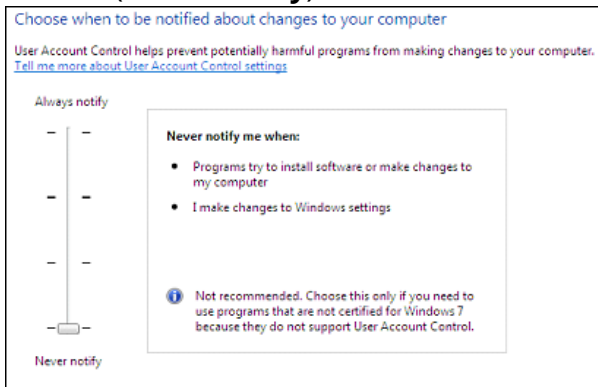


Figure 2-6. User Accounts - Never notify

6. By default, the C: drive will not be shared and the administrator will not have any rights on the drive. Share the drive as C, add the administrator, and set Full Permissions.
  - a) Click the **Computer** icon from the Desktop.

- b) Right-click on the **c :** drive and select **Properties**.

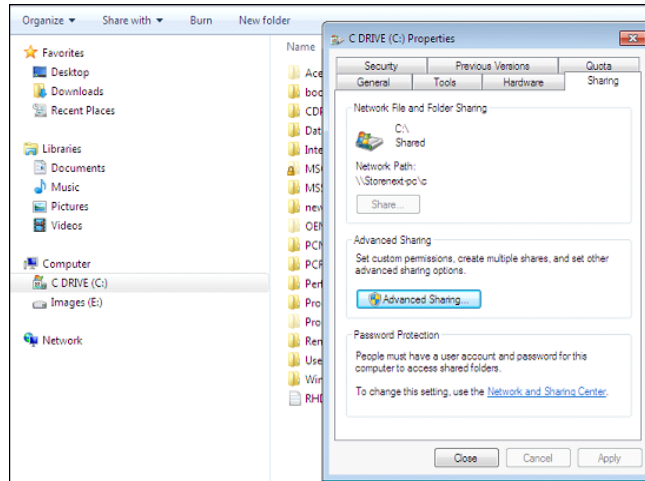


Figure 2-7. C Drive - Properties

- c) Click on **Advanced Sharing**.

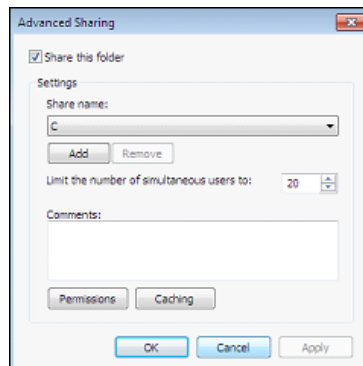
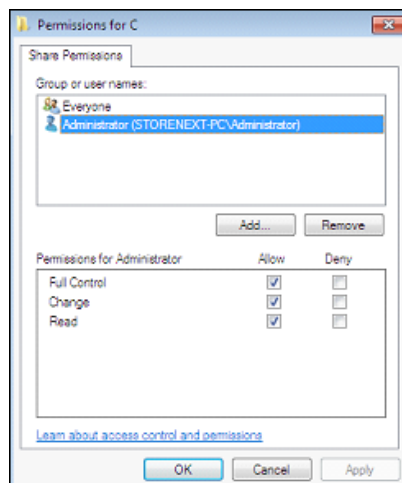


Figure 2-8. C Drive - Advanced Sharing

- d) Click the **Share this folder** checkbox and add a Share name of **C**.  
 e) Click on **Permissions**.



- f) Highlight the **Administrator** and check the **Allow** box for **Full Control**, **Change**, and **Read**.

- By default, the Network Card will be configured to obtain an IP address automatically. **ENCOR** requires all terminals to have a static IP address. Configure the Internet Protocol Version 4 (TCP/IPv4) function of the network card so that it will communicate on your network (under Network and Internet > Network Connections).

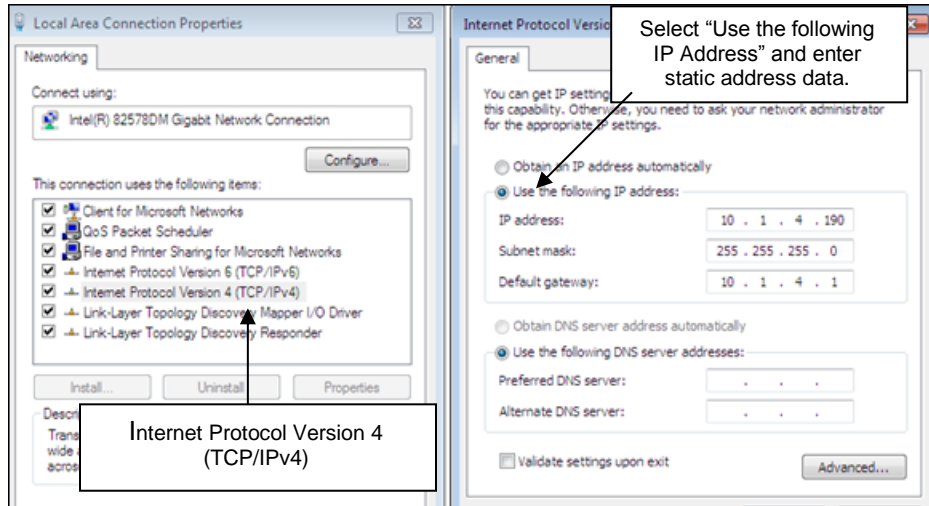


Figure 2-9. Local Area Connection - Internet Protocol Version 4

- By default, the Remote Registry Service in Server 2012 R2 is set for Automatic Start and is running. **ENCOR** requires this service to be running to install or any LFS terminal. It is recommended you set this service to Automatic Start (under Services > Services Local).

Verify:

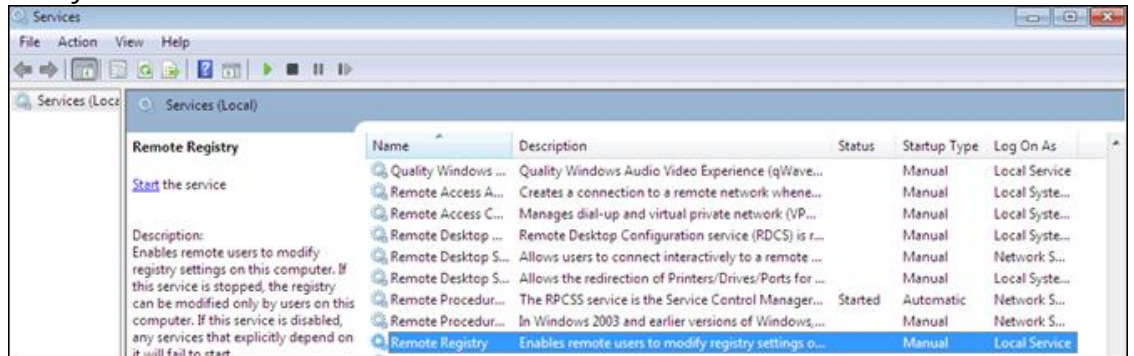


Figure 2-10. Services - Remote Registry

- By default, the drivers for the On Board Video Card (in Acer PCs) do not support a Full Screen Command Prompt Box, but **ENCOR** requires this functionality. Disable the installed video card driver (select **Control Panel > Device Manager > Display Adapters**, then right-click and select **Disable**) and reboot the PC.

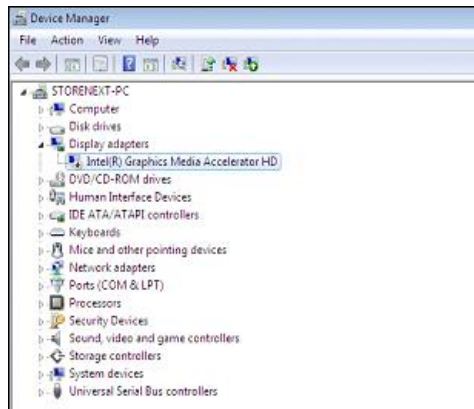


Figure 2-11. Device Manager - Intel Graphics Media Accelerator

10. Verify that a command prompt window can be opened and toggle back and forth between full screen and normal screen.
  - a) Click on **Start**, enter **cmd** in the Search Box, and press **Enter**. The command window displays.
  - b) Press **<Alt><Enter>** twice to toggle between both screens.
  - c) Type **exit** and press **Enter** to return to the Desktop.
11. Now, turn off the Windows Firewall (Control Panel > Windows Firewall > Customize Settings).

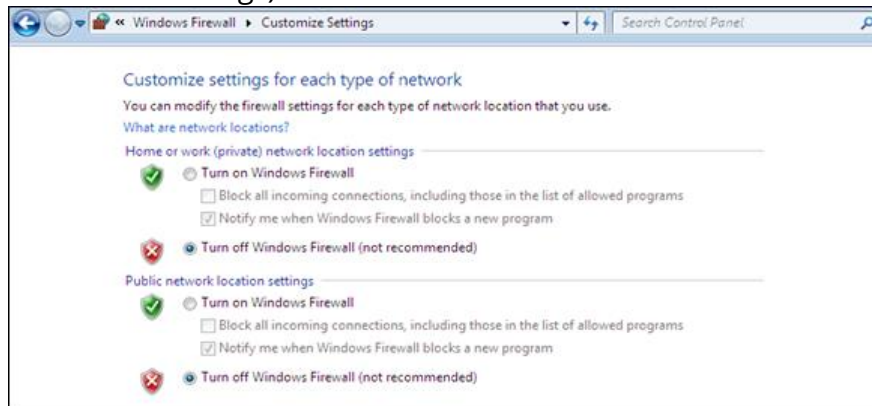


Figure 2-12. Windows Firewall - Customize Settings

12. Install SQLServer 2008 R2.

# Chapter 3: SQL Server 2008 R2 WorkGroup

## 1.1 Installing .net Framework 3.5

### Important:

Prior to SQL Server installation, .net Framework 3.5 needs to be installed .

1. SQL Server 2012 R2 64 bit Service Pack 1 must be installed (not supplied, must be downloaded from Microsoft).

**Server2008SP4-KB2979596-x86-ENU**

Figure 3-1. SQL Server 2012 R2 64 bit Service Pack 1

2. From the Server Manager screen, click on **Add roles and features**.

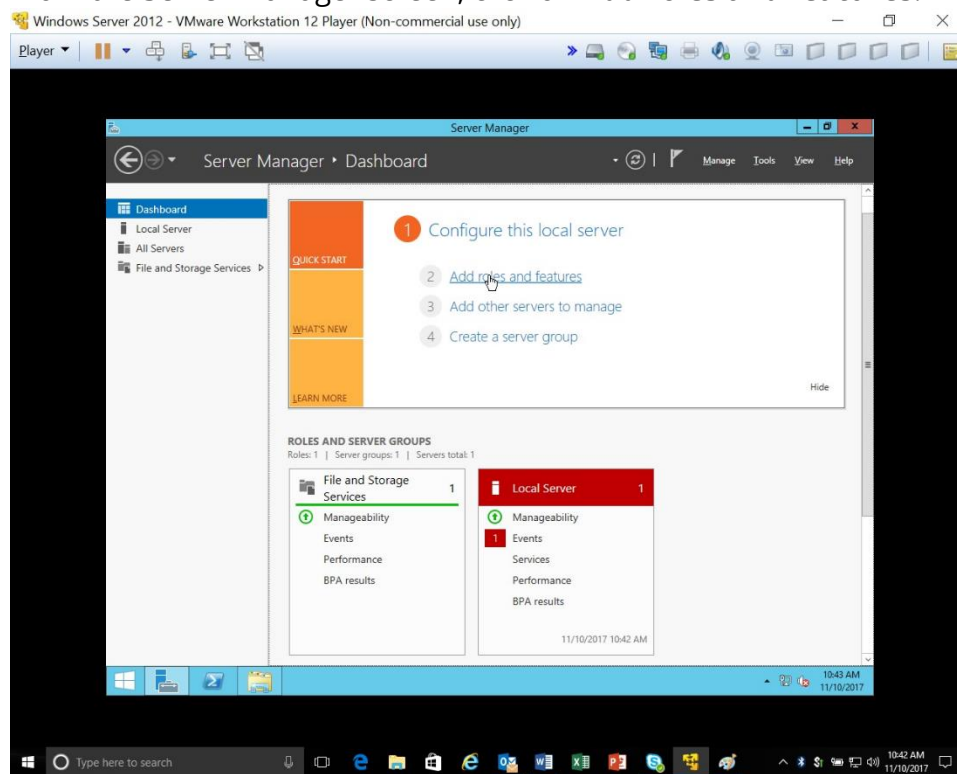


Figure 3-2. Server Manager - Add roles and features

- Click on **Server Selection**, select the current server, and then click **Next**.

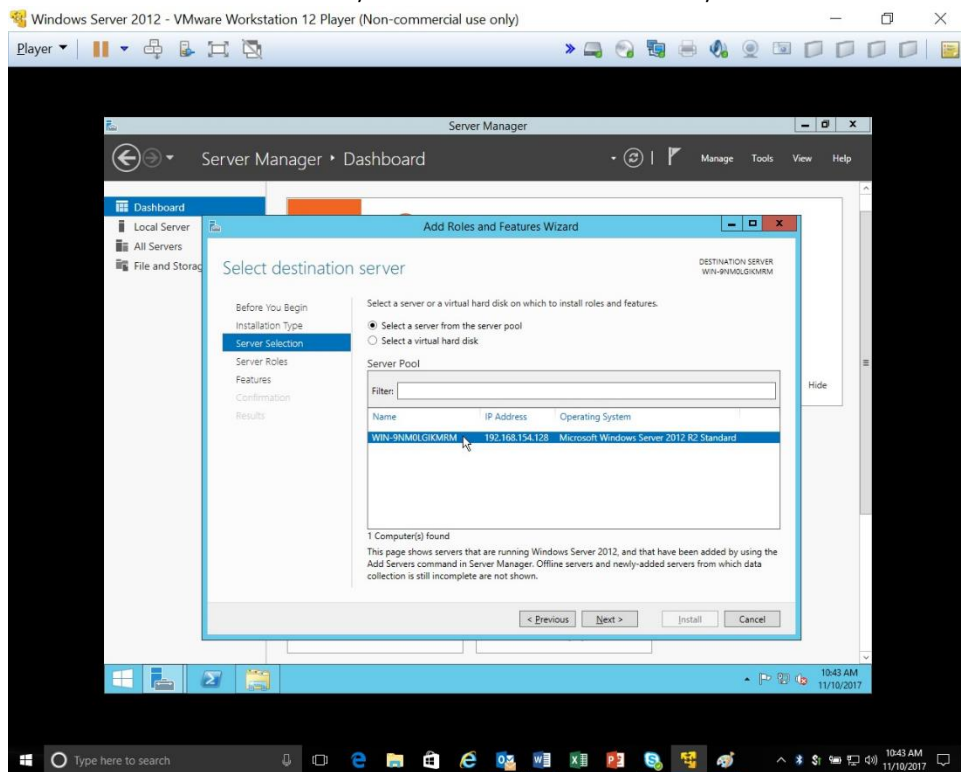


Figure 3-3. Server Manager - Select destination server

- Click on **.Net Framework 3.5 Features**, and then click **Next**.

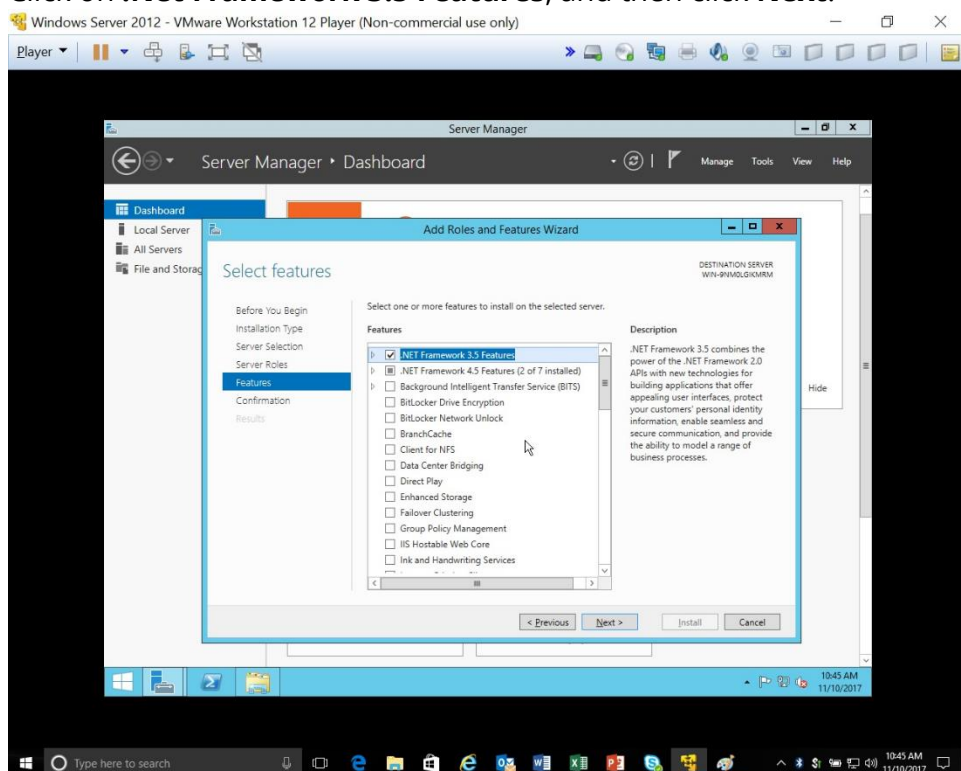


Figure 3-4. Server Manager - Select features

5. Installation begins.

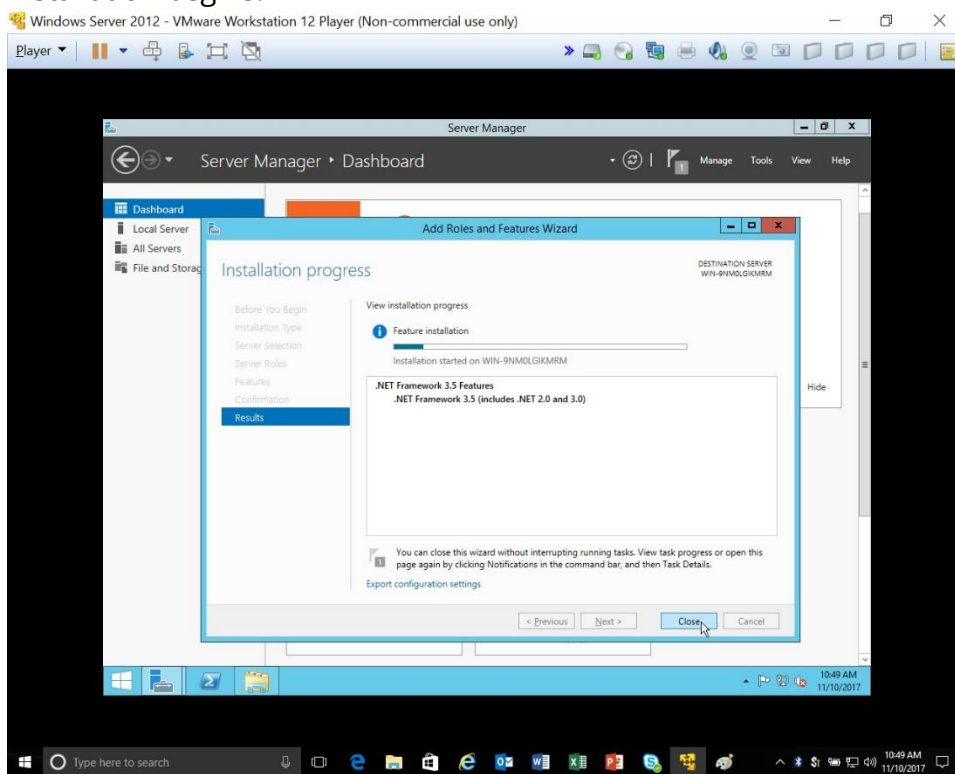


Figure 3-5. Server Manager - Installation Progress

6. Installation completed. Now proceed to SQL Server installation.

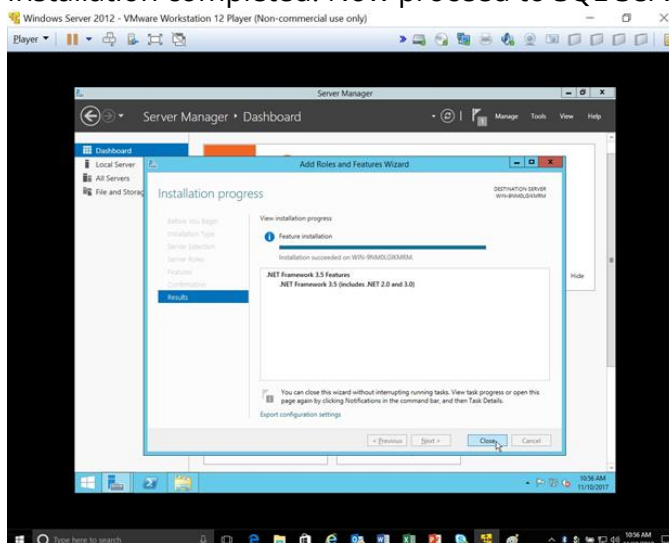


Figure 3-6. Server Manager - Installation Complete

## 1.2 SQL Server Installation

- From the CD or from the folder containing the SQL Server 2008 Workgroup Edition, select **setup.exe**.

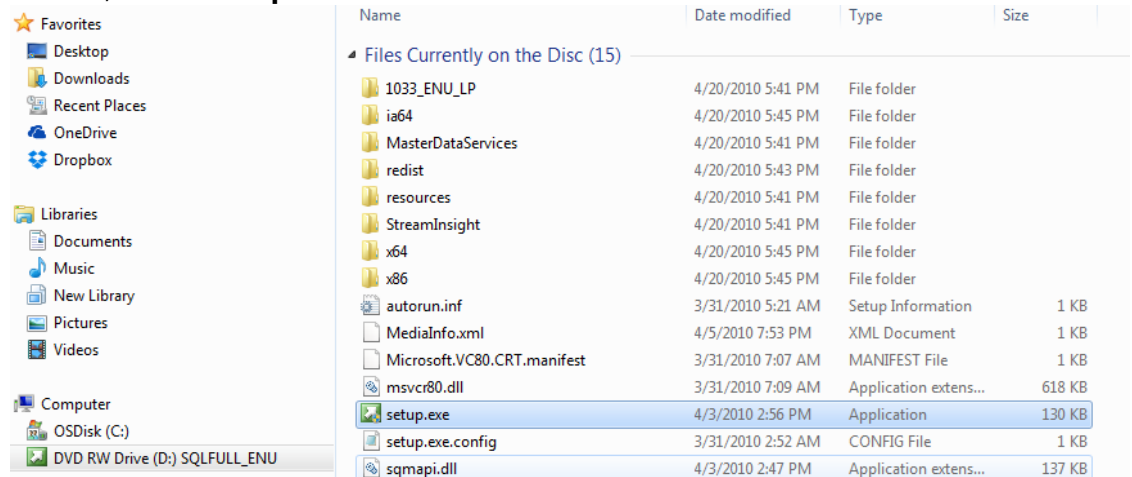


Figure 3-7. SQL Server 2008 Workgroup Edition - setup.exe

- Click on **Run the program without getting help**. Installation will continue.

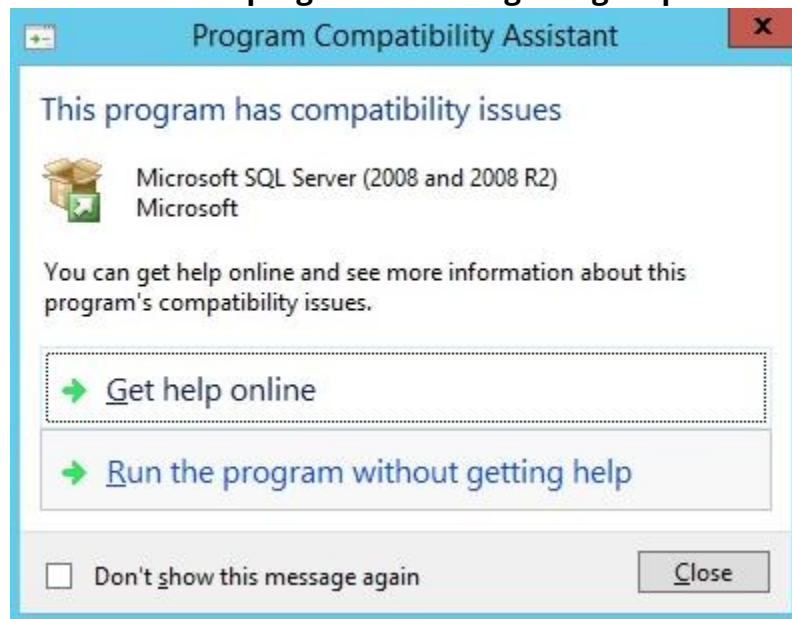


Figure 3-8. Program Compatibility Assistant



Figure 3-9 SQL Server Installation Center

9. On the left-hand side, click **Installation**. Installation options are displayed.

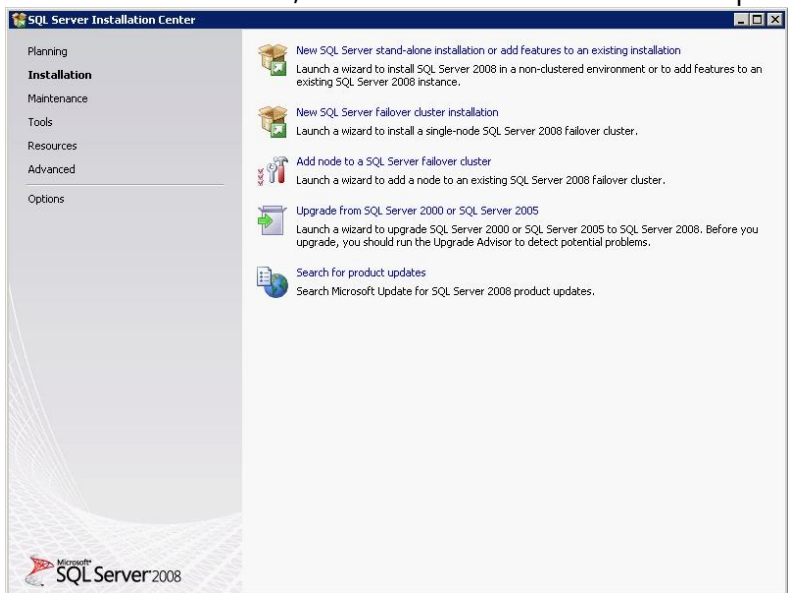


Figure 3-10. SQL Server Installation Center - Installation

10. Select the top hyperlink: **New SQL Server stand-alone installation or add features to an existing installation**. An SQL Server 2008 message appears

and then the Setup Support Rules screen will be displayed.

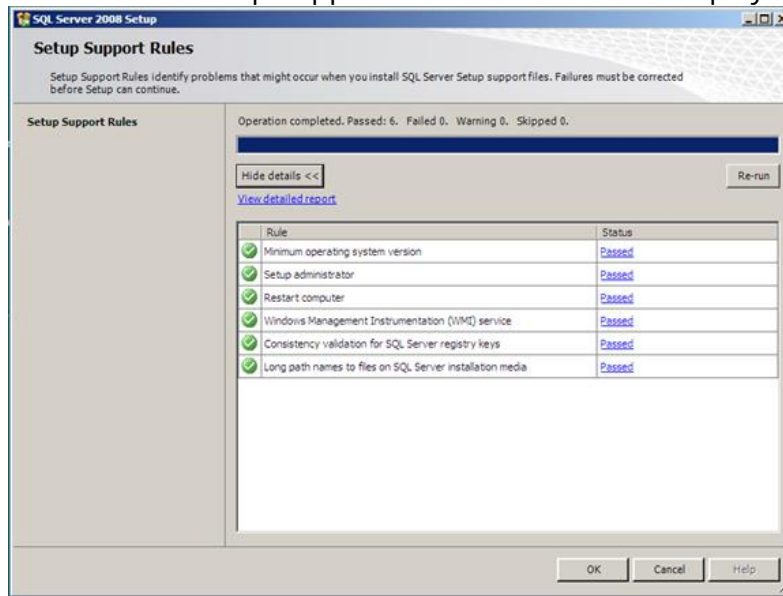


Figure 3-11. SQL Server 2008 Setup - Setup Support Rules

11. Click **OK**.
12. Setup Support Files is displayed.

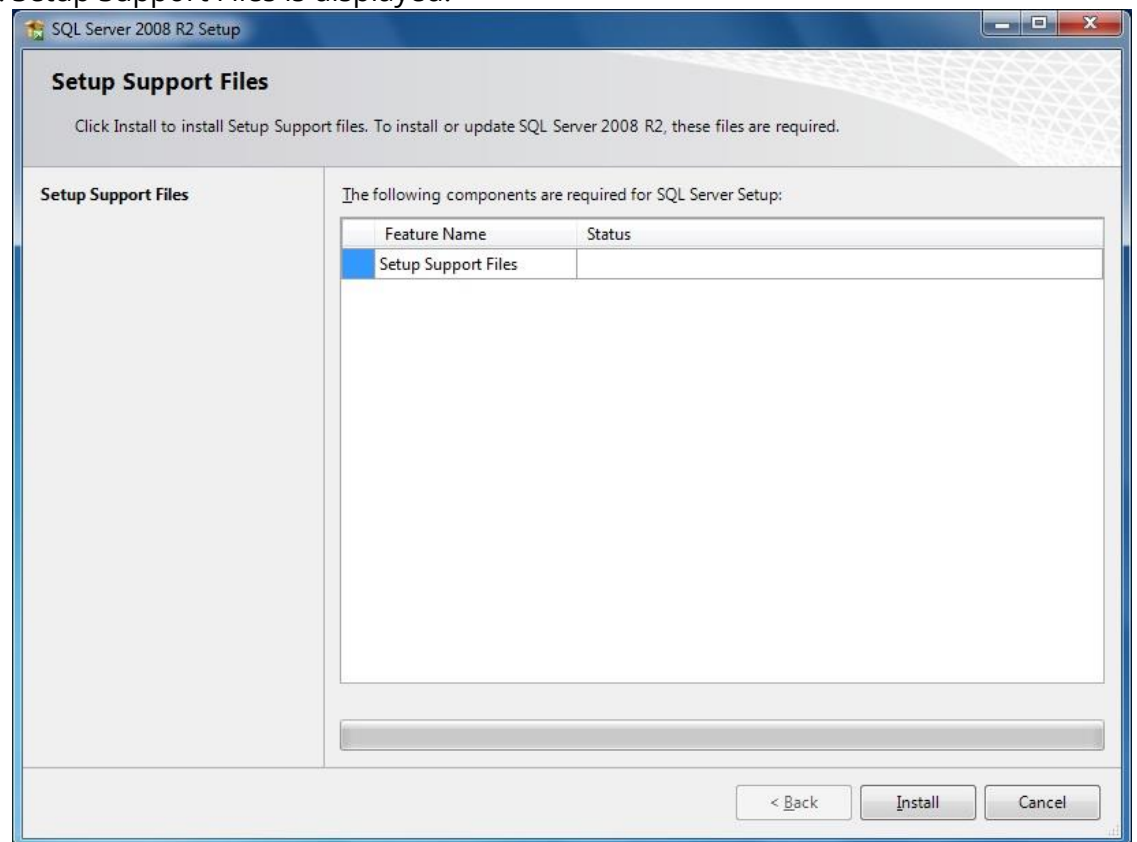


Figure 3-12. SQL Server 2008 R2 Setup - Setup Support Files

13. Click on **Install**.

14. Once completed, click **Next** to continue.

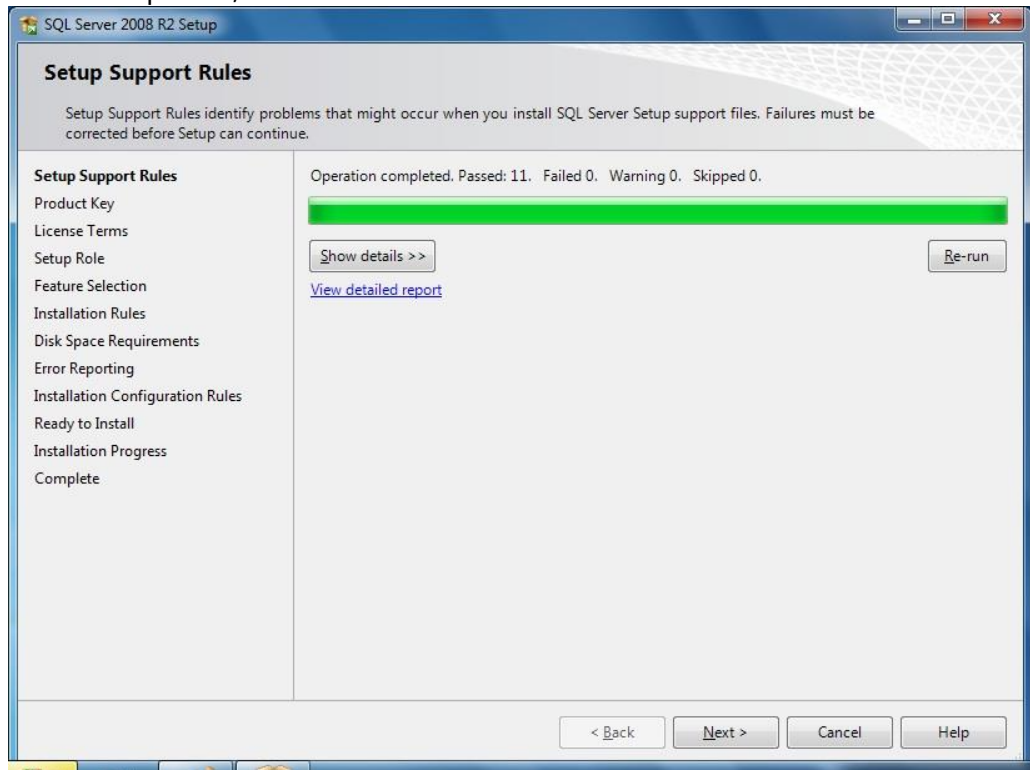


Figure 3-13. SQL Server 2008 R2 Setup - Operation Completed

15. The product key displays.

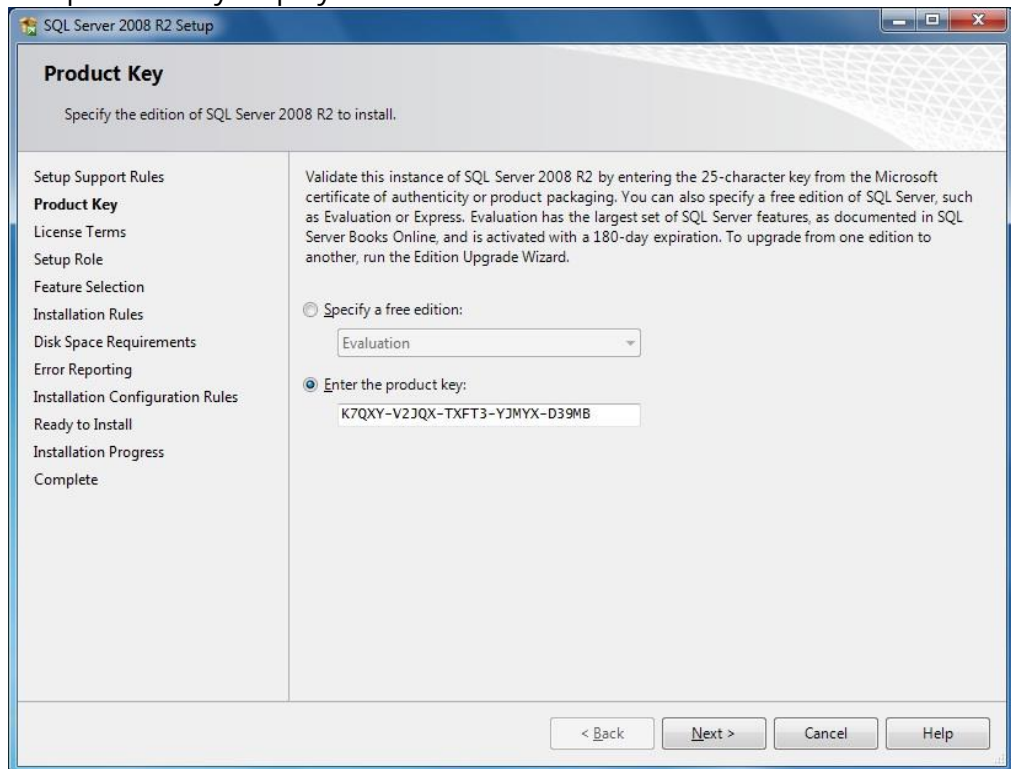


Figure 3-14. SQL Server 2008 R2 Setup - Product Key

16. Click **Next** to continue.

17. Click **OK** . The SQL Server 2008 Setup License Terms is displayed.



Figure 3-15. SQL Server 2008 R2 Setup - License Terms

Accept the license terms and then click **Next**.

18. Setup Role displays.

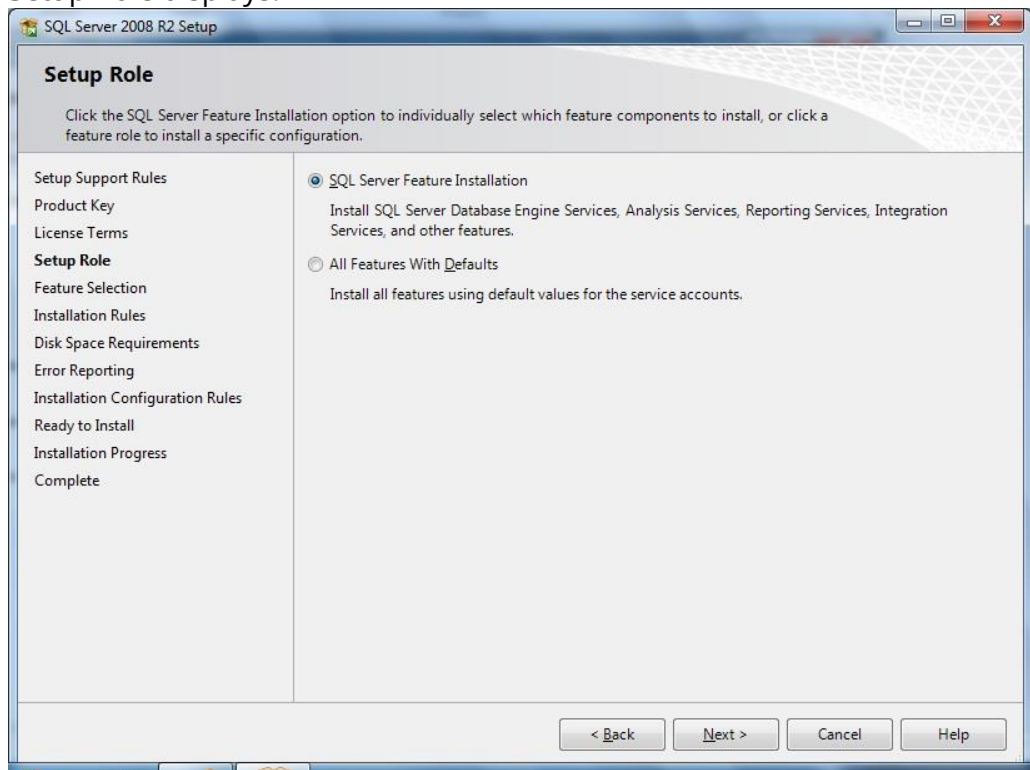


Figure 3-16. SQL Server 2008 R2 Setup - Setup Role 1

19. Select **All Features with Defaults** and then click **Next**.

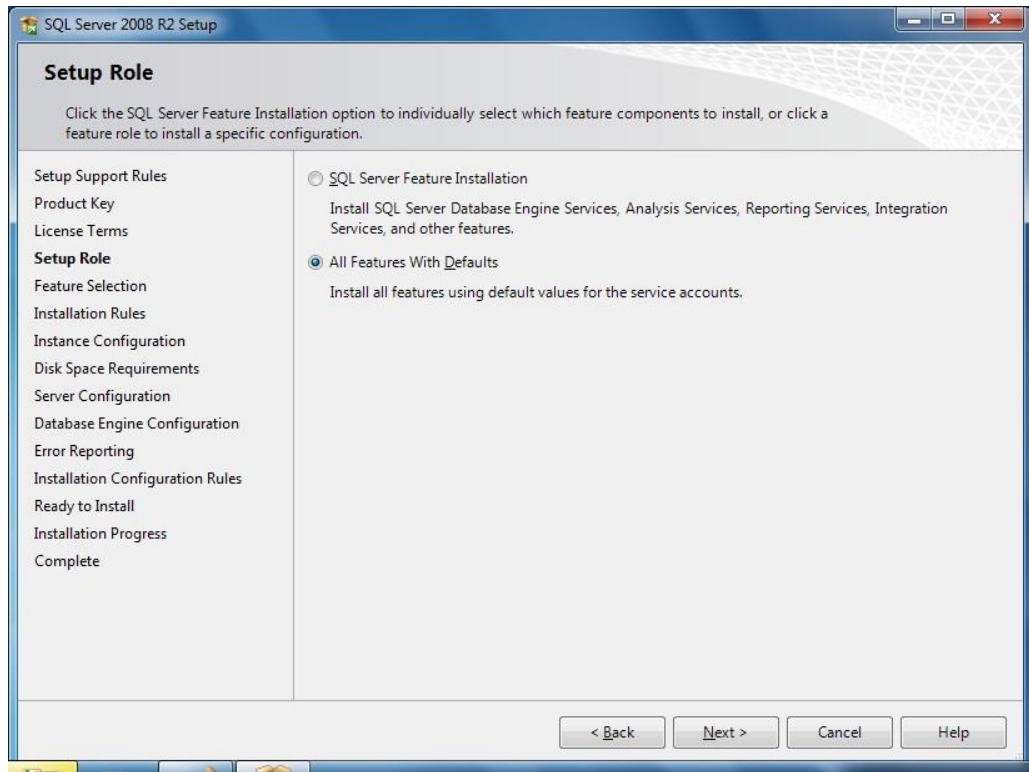


Figure 3-17. SQL Server 2008 R2 Setup - Setup Role 2

20. Feature Selection displays.

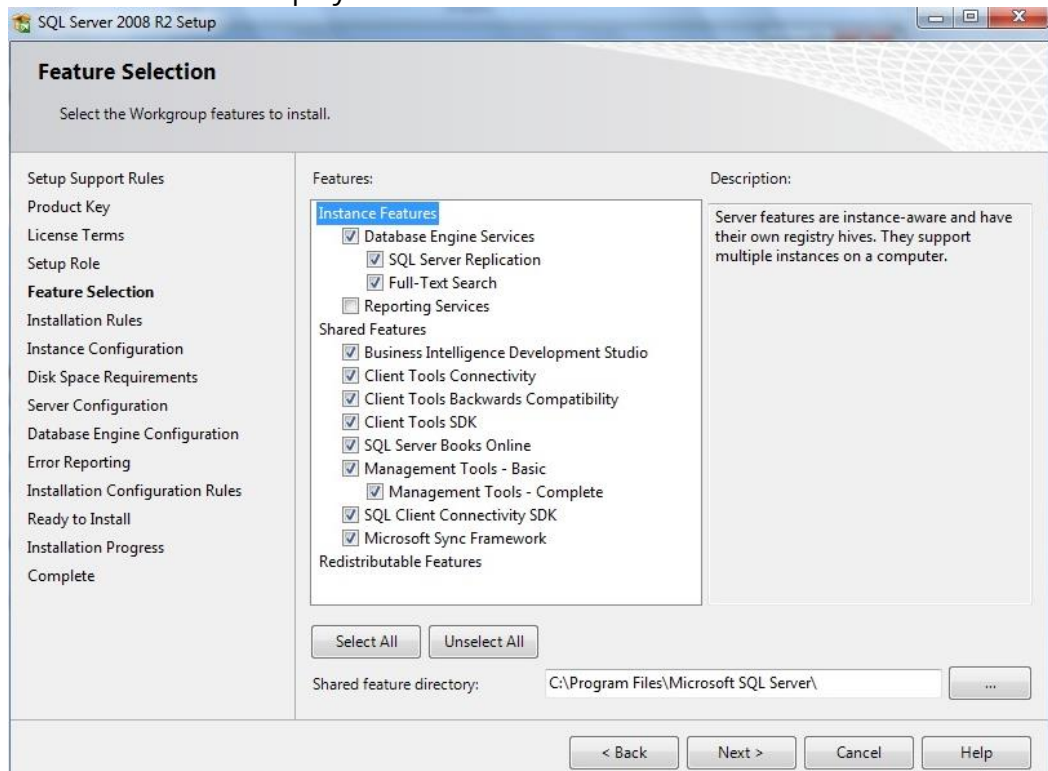


Figure 3-18. SQL Server 2008 R2 Setup - Feature Selection

21. Click **Select All** and then uncheck **Reporting Services**.
22. Installation Rules is displayed.

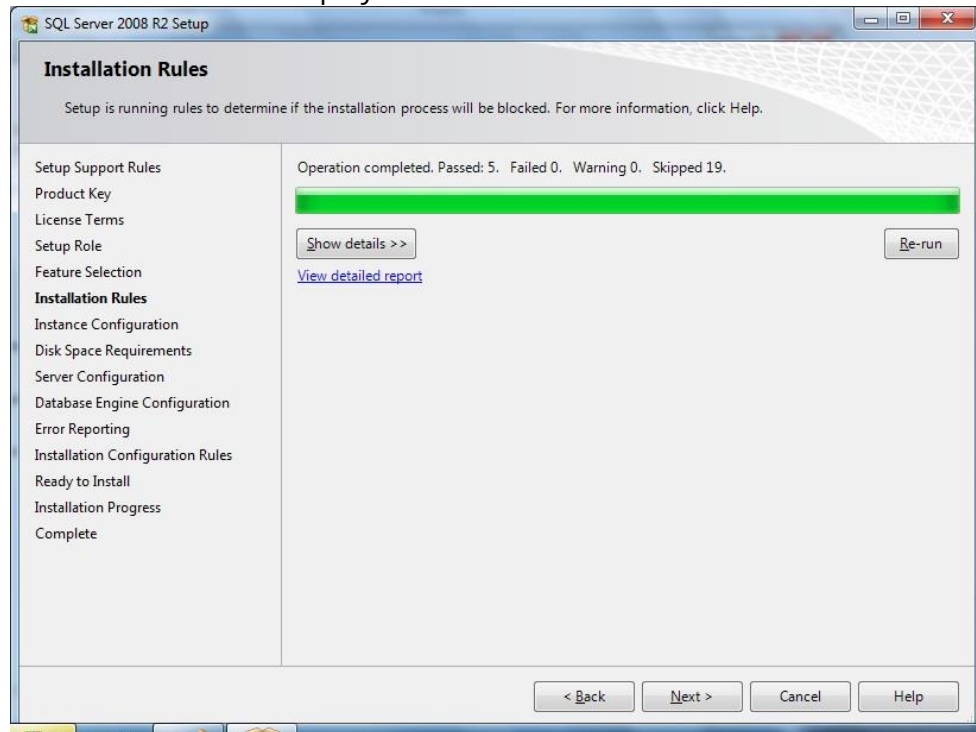


Figure 3-19. SQL Server 2008 R2 Setup - Installation Rules

23. Instance Configuration displays. Click **Next** to continue.

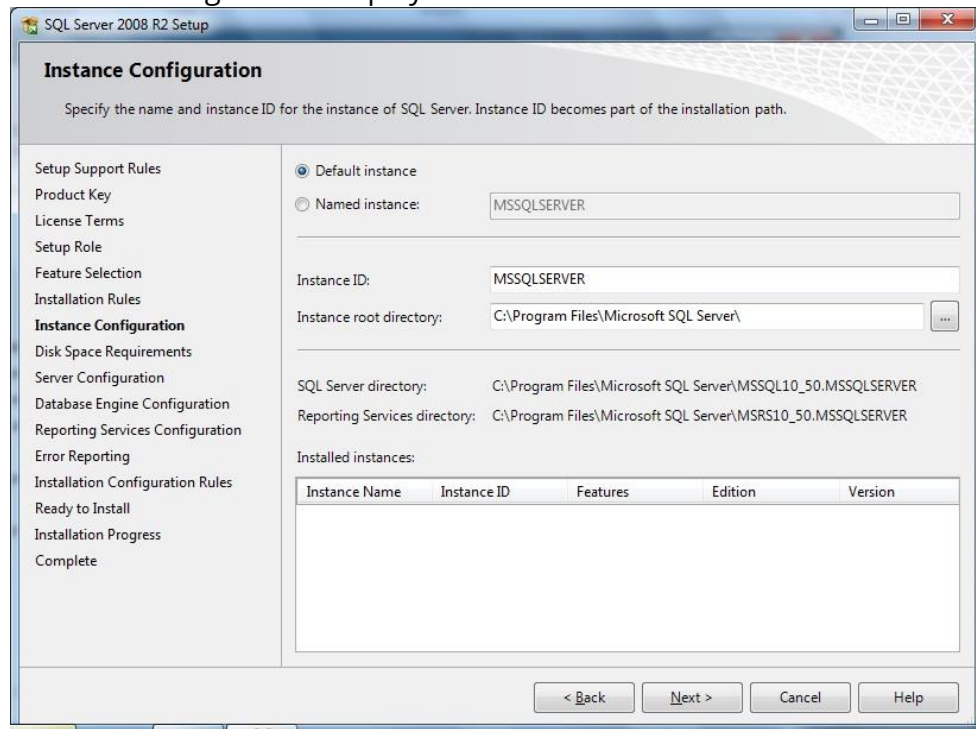


Figure 3-20. SQL Server 2008 R2 Setup - Instance Configuration

24. Click **Next**.

25. The Disk Space Requirements screen is displayed.

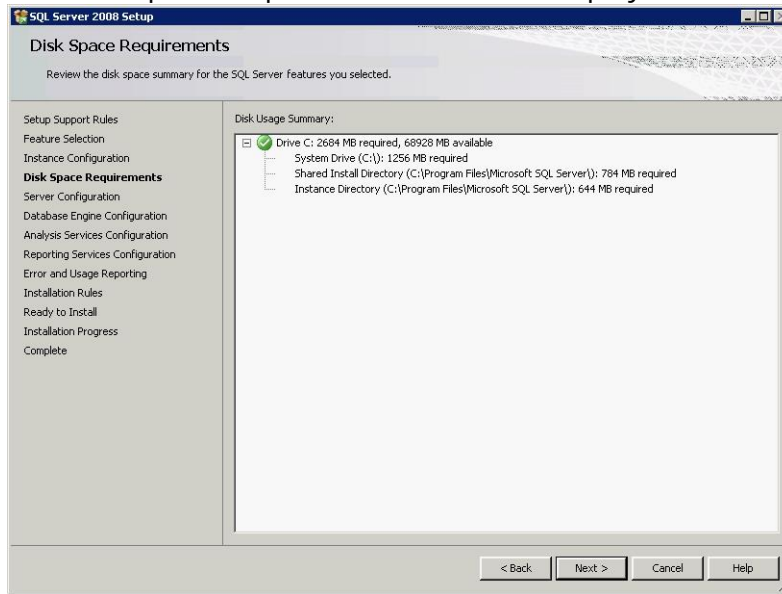


Figure 3-21. SQL Server 2008 R2 Setup - Disk Space Requirements

26. Click **Next** . The Server Configuration screen is displayed.

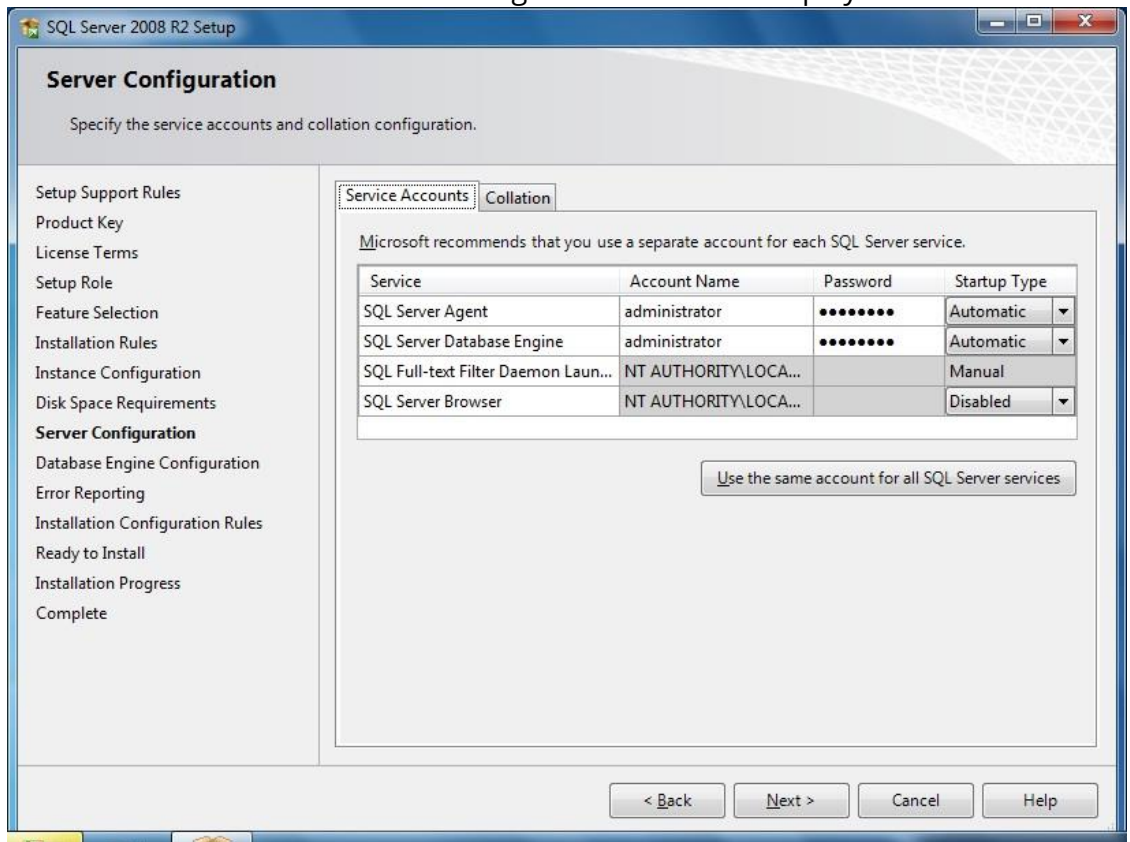


Figure 3-22. SQL Server 2008 R2 Setup - Server Configuration

27. Click the **Use the same account for all SQL Server services** button. The Use the same account for all SQL Server 2008 Services dialog box is displayed.

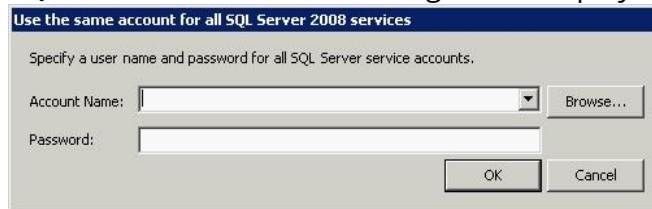


Figure 3-23. Use the same account for all SQL Server 2008 services

28. Enter the administrator name and password and click **OK**.
29. **Do not click next!** Click on **Collation** and insure the collation is configured as:  
SQL\_Latin1\_General\_CP1\_CI\_AS

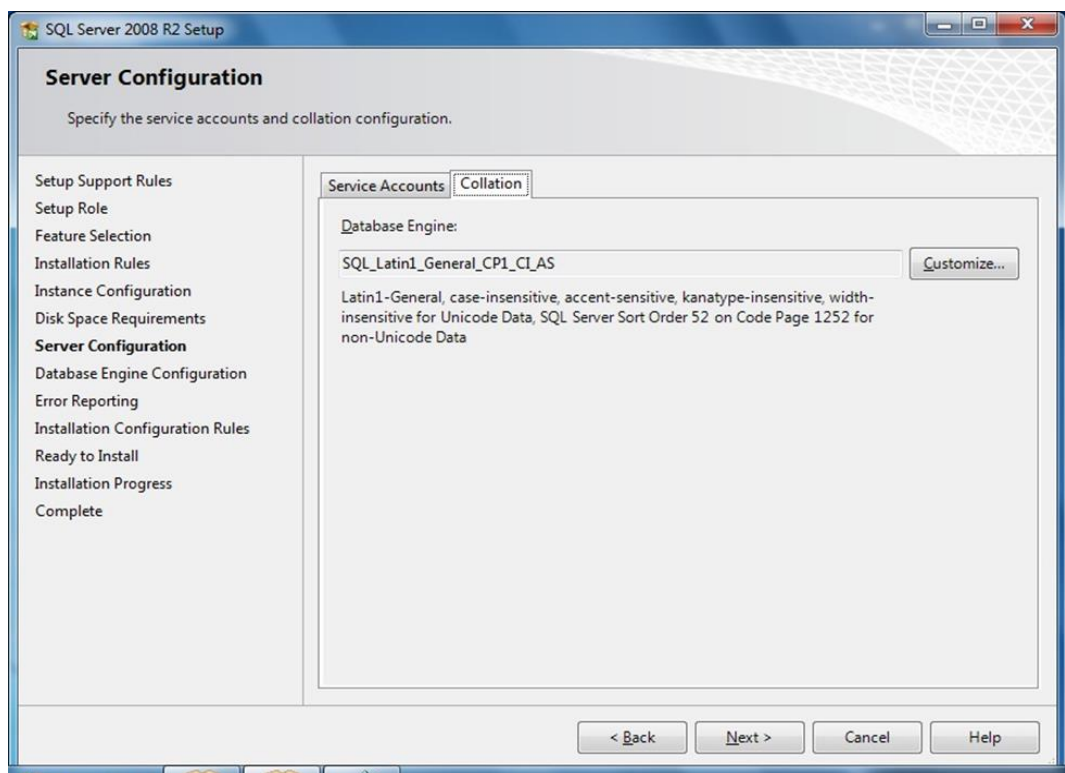


Figure 3-24. SQL Server 2008 R2 Setup - Server Configuration

30. Click **Next**.

31. Click **Next >**. The Database Engine Configuration screen is displayed.

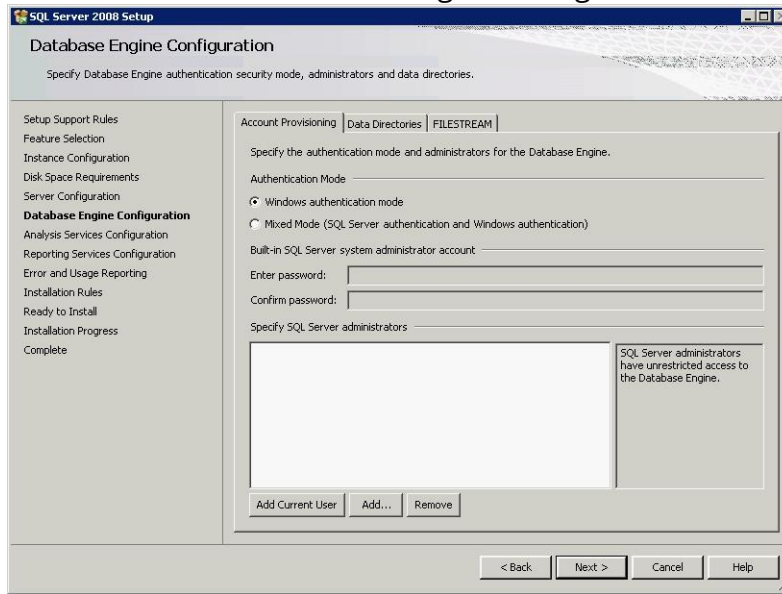


Figure 3-25. SQL Server 2008 R2 Setup - Database Engine Configuration

32. Select the **Mixed Mode (Windows Authentication and SQL Server Authentication)** radio button and enter a valid **strong password** for user “sa”.

33. Click **Next >**. The Error and Usage Reporting Screen displays.

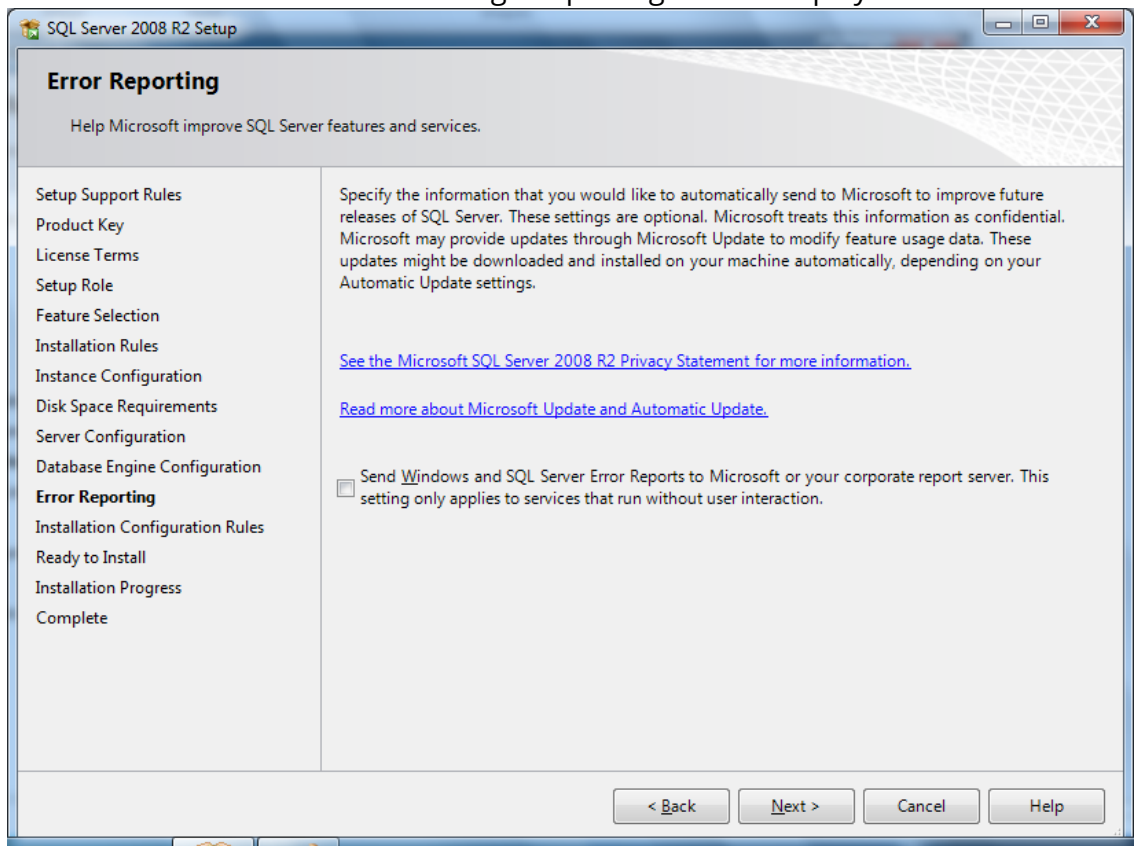


Figure 3-26. SQL Server 2008 R2 Setup - Error Reporting

34. Click **Next >**. The Installation Configuration Rules screen displays.

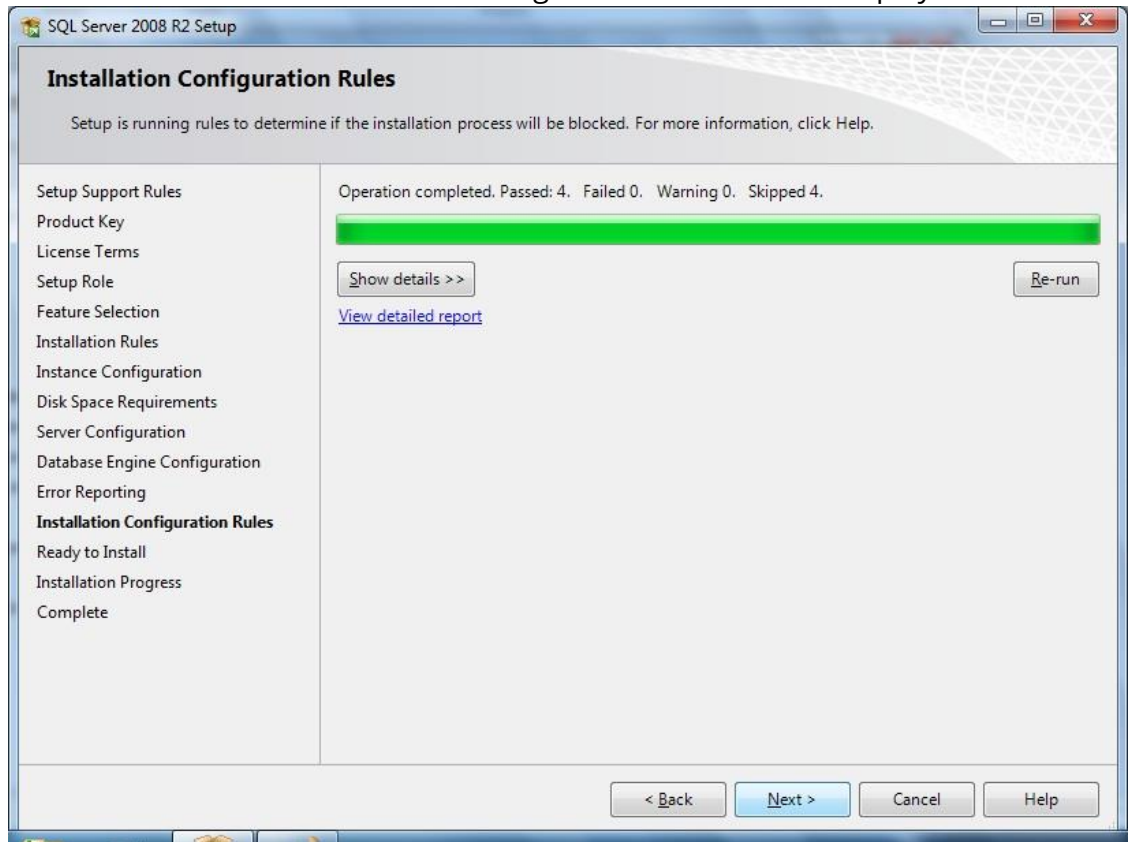


Figure 3-27. SQL Server 2008 R2 Setup - Installation Configuration Rules

35. Click **Next** to continue.  
 36. Click **Next >**. The Ready to install screen displays.

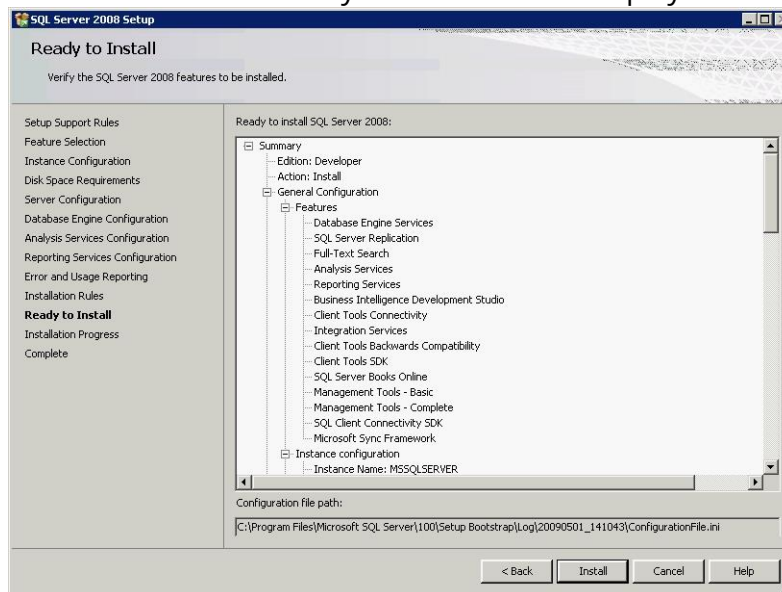



Figure 3-28. SQL Server 2008 R2 Setup - Ready to Install

37. Click  to start the SQL installation process. The Installation Progress screen displays.

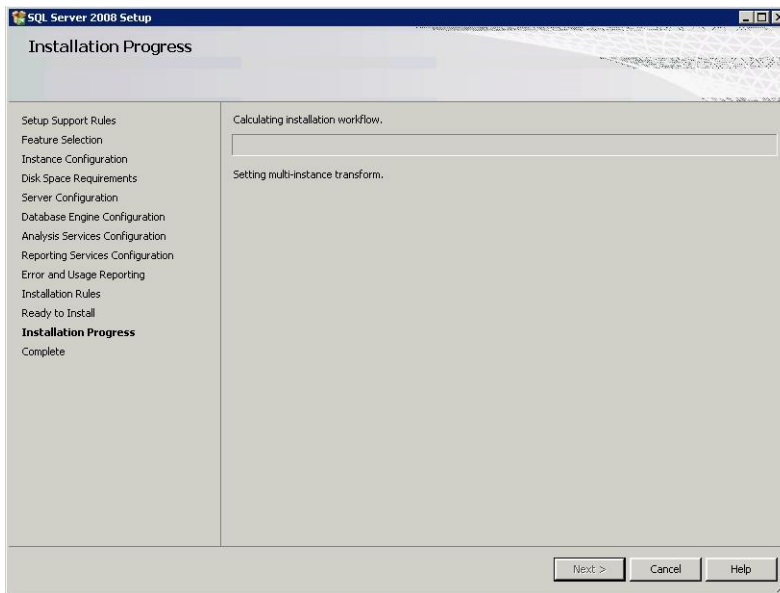


Figure 3-29. SQL Server 2008 R2 Setup - Installation Progress 1

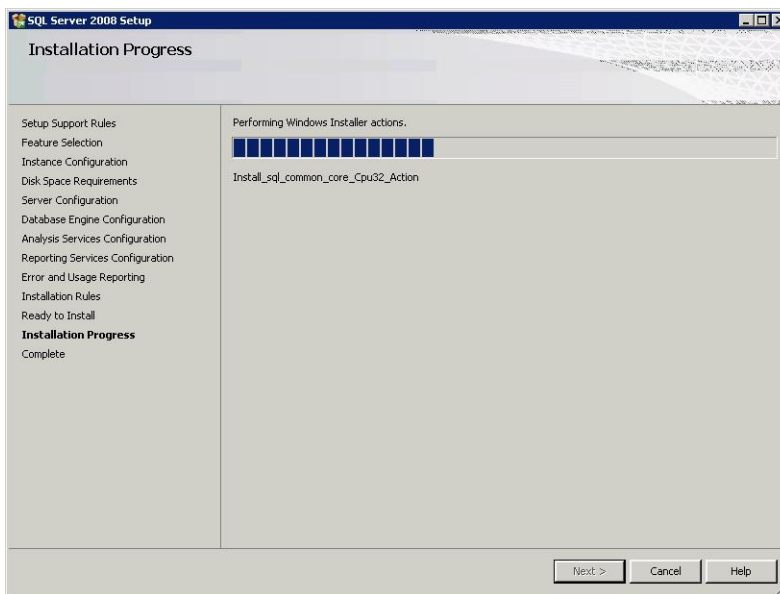


Figure 3-30. SQL Server 2008 R2 Setup - Installation Progress 2

## 38. View the details of the install.

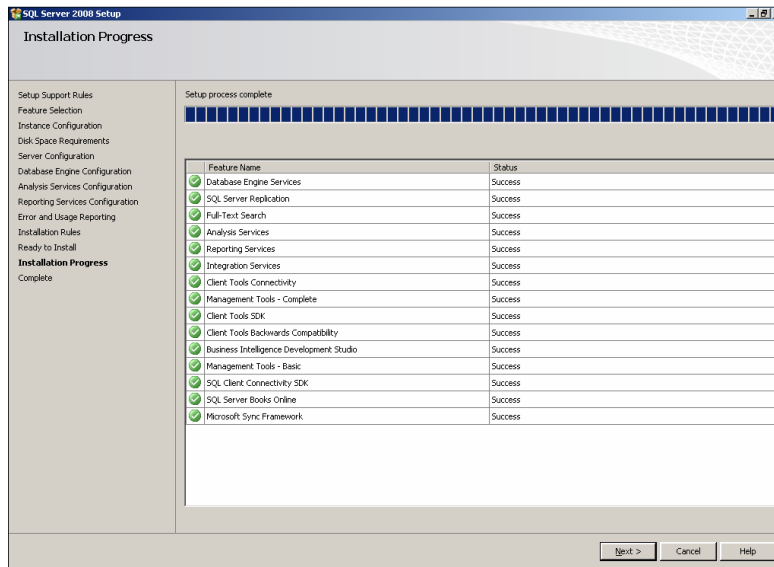


Figure 3-31. SQL Server 2008 R2 Setup - View Installation Details

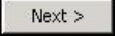
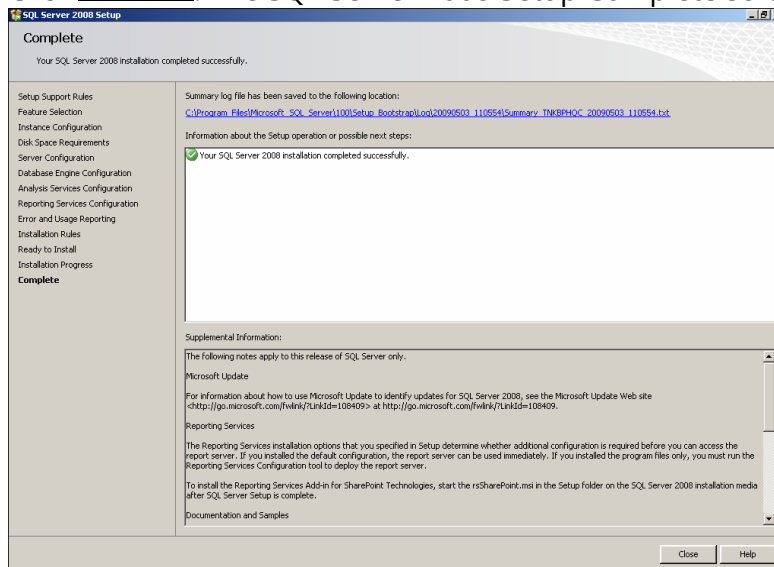
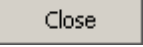
39. Click . The SQL Server 2008 Setup Complete screen is displayed.

Figure 3-32. SQL Server 2008 R2 Setup - Complete

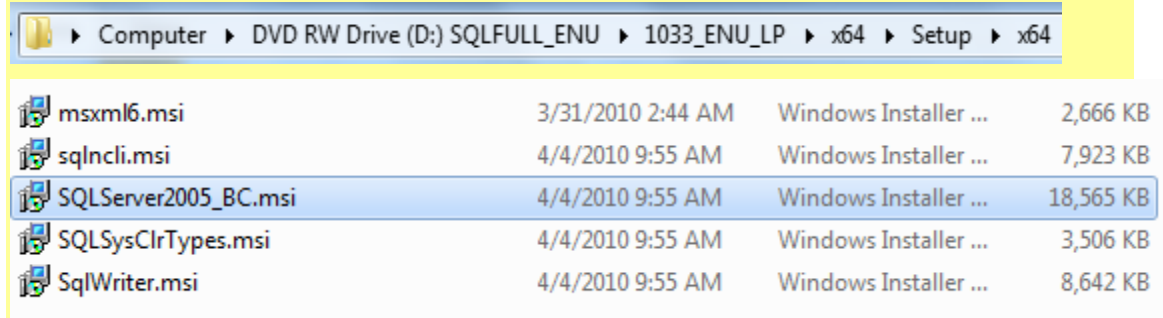
40. Click  to finish the SQL install. It is recommended that MFS1 be rebooted at this time.

# Chapter 4: SQL Backward Compatible Setup

## 1.1 Backwards Compatibility (SQLDMO) SQLServer2005\_BC.msi

### Note:

The SQL Compatibility can be found:



File Name	Date Modified	Type	Size
msxml6.msi	3/31/2010 2:44 AM	Windows Installer ...	2,666 KB
sqlncli.msi	4/4/2010 9:55 AM	Windows Installer ...	7,923 KB
SQLServer2005_BC.msi	4/4/2010 9:55 AM	Windows Installer ...	18,565 KB
SQLSysClrTypes.msi	4/4/2010 9:55 AM	Windows Installer ...	3,506 KB
SqlWriter.msi	4/4/2010 9:55 AM	Windows Installer ...	8,642 KB

1. Run **SQLServer2005\_BC.msi**.
2. At the License Agreement, select the radio button **I accept the terms in the license agreement**, and click **Next**.

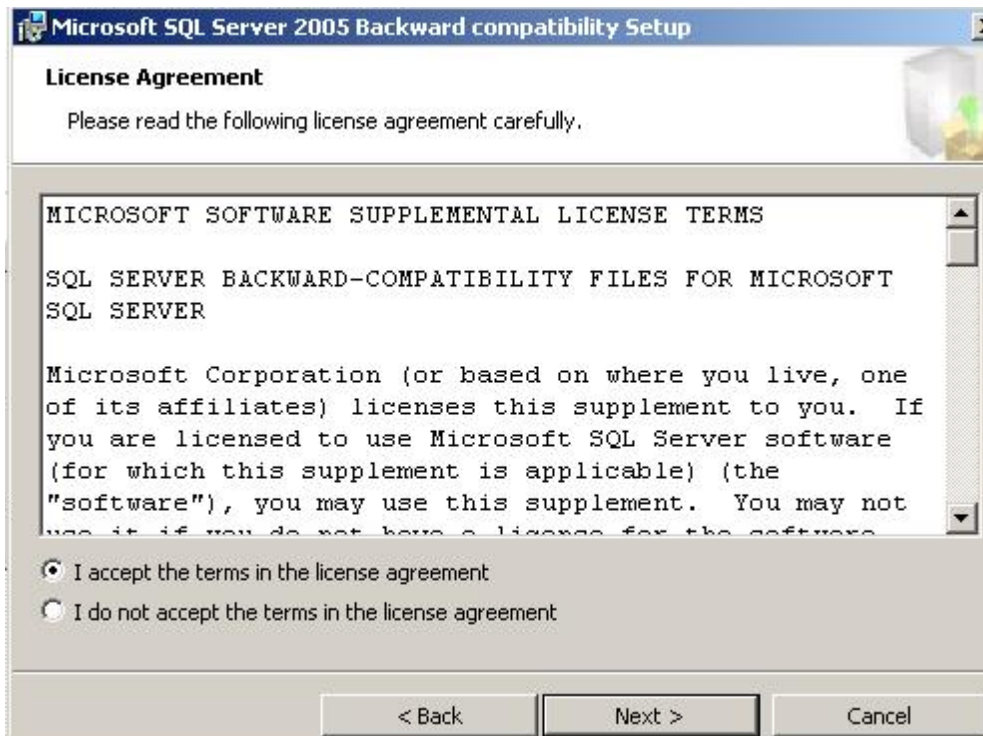


Figure 4-1. SQL Server 2005 Backward compatibility Setup - License Agreement

3. At the Registration Information screen, enter your information and then click **Next**.

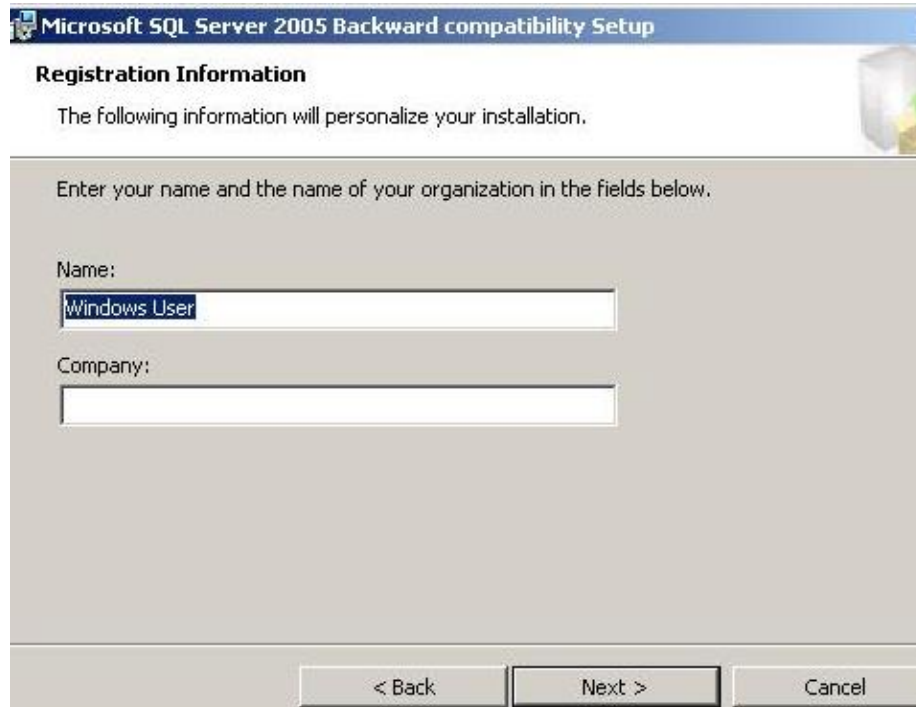


Figure 4-2. SQL Server 2005 Backward compatibility Setup - Registration Information

4. The Microsoft SQL Server 2005 Backward compatibility Welcome screen is displayed. Click **Next**.



Figure 4-3. SQL Server 2005 Backward compatibility Setup - Welcome

5. The Feature Selection screen is displayed. Click **Next**.

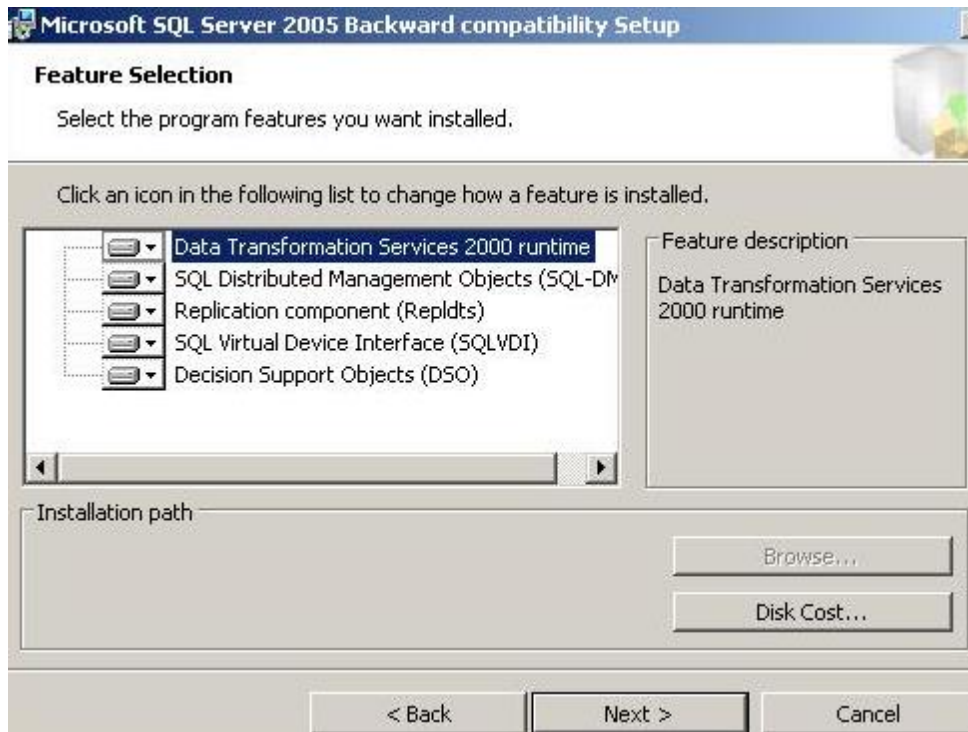


Figure 4-4. SQL Server 2005 Backward compatibility Setup - Feature Selection

6. Ready to install the Program is displayed. Click **Install**.

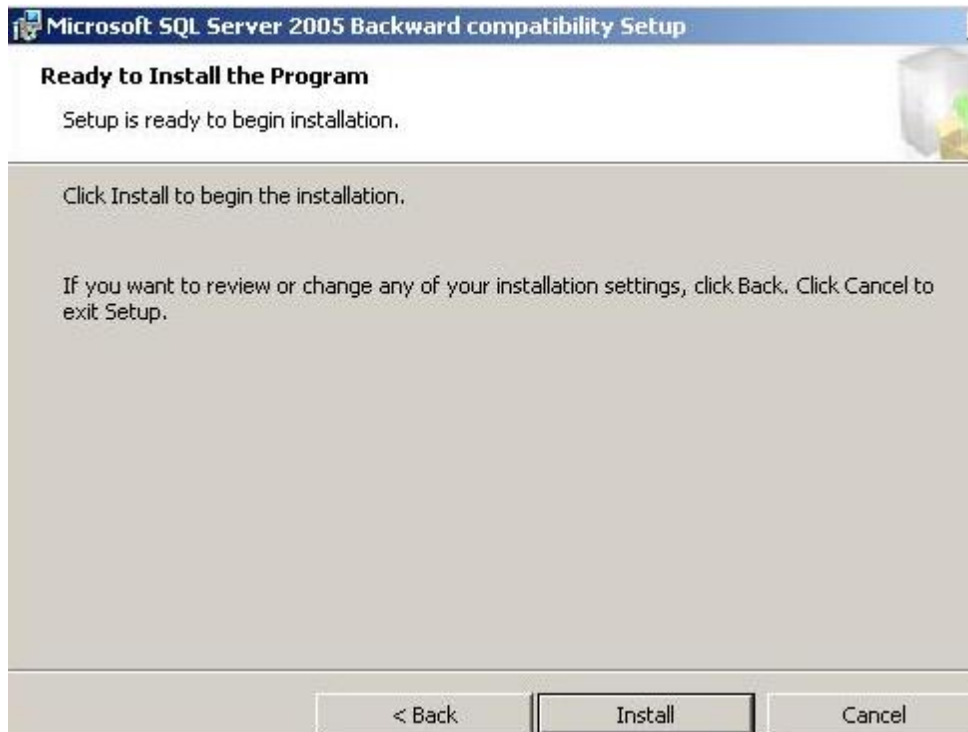


Figure 4-5. SQL Server 2005 Backward compatibility Setup - Ready to Install the Program

7. The Completing the Microsoft SQL Server 2005 Backward compatibility Setup screen is displayed. Click **Finish**.



Figure 4-6. SQL Server 2005 Backward compatibility Setup - Setup Complete

## Chapter 5: Enable Named Pipes

To allow for backwards compatibility with a Windows XP or LFS Workstation, a change must be made once the installation of SQL 2008 has been completed. In previous versions of SQL and Windows, NCR used Named Pipes as the communications protocol for connections to the Front Office database on MFS1. However, Named Pipes are disabled by default in SQL 2008.

1. Click **START > ALL PROGRAMS > MICROSOFT SQL Server 2008 > Configuration Tools > SQL Server Configuration Manager**.
2. Open the **SQL Server Network Configuration** folder.
3. Click on **Protocols for MSSQLSERVER**.

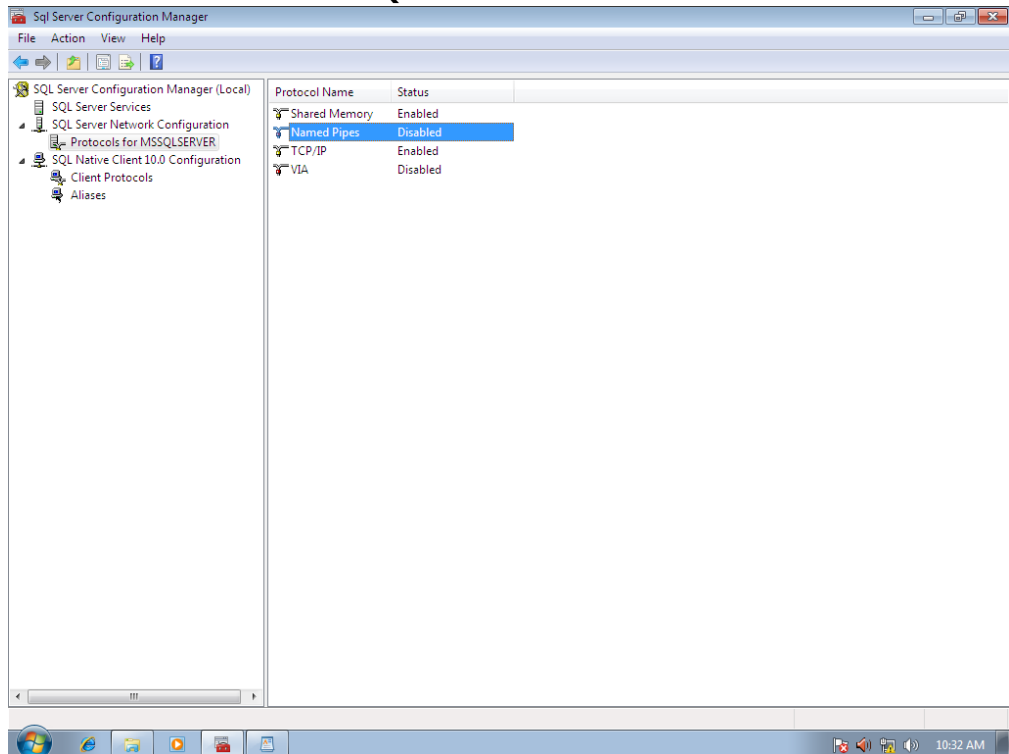


Figure 5-1. Sql Server Configuration Manager - Protocols for MSSQLSERVER

4. Double-click on **Named Pipes** and change the Enabled value from NO to **YES**. Click on **Apply**. Click **OK** to acknowledge the warning that changes will not

take effect until the service is stopped and restarted.

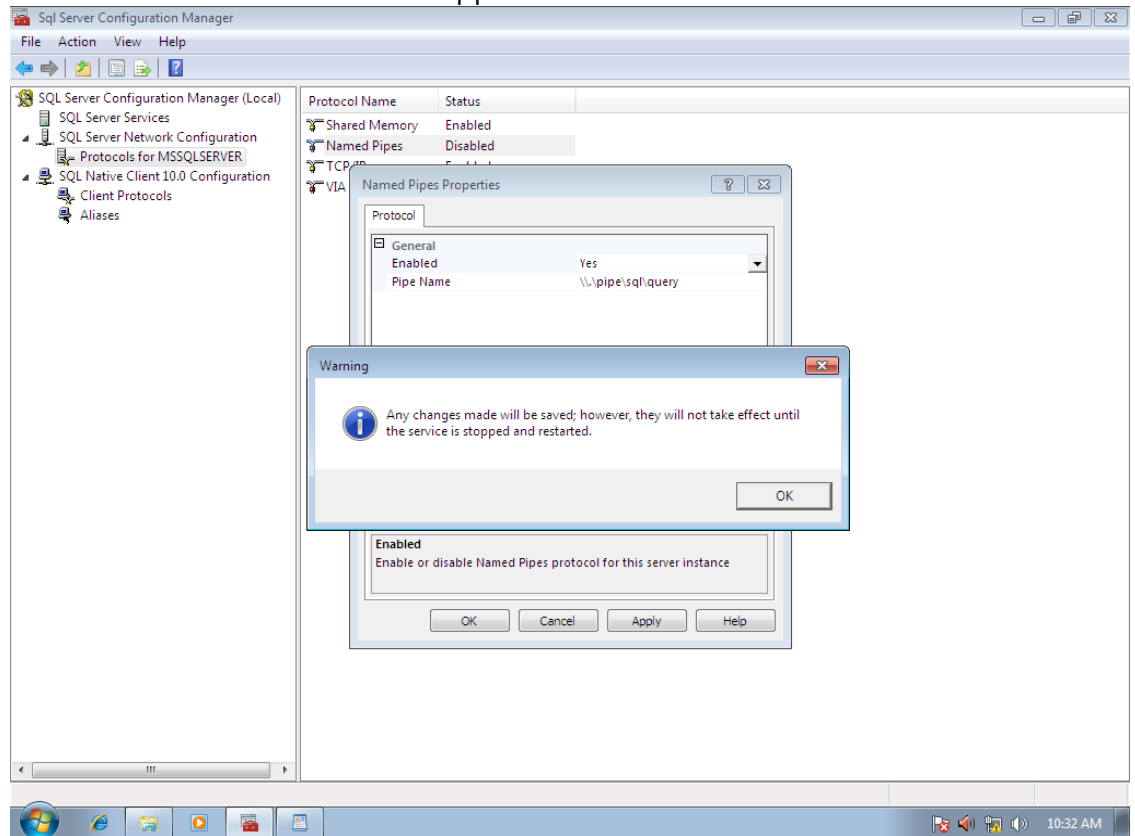


Figure 5-2. Sql Server Configuration Manager - Warning

5. Click OK, close all open windows, and reboot MFS1.

# Chapter 6: Disable DEP

## 1.1 Disable Data Execution Prevention (DEP)

It is recommended that DEP be completely disabled on all NCR PCs.

DEP can be turned on for all applications, turned on for only certain applications, or it can be completely turned off.

DEP settings can be changed through the GUI application, but a command level script must be run to completely disable the application.

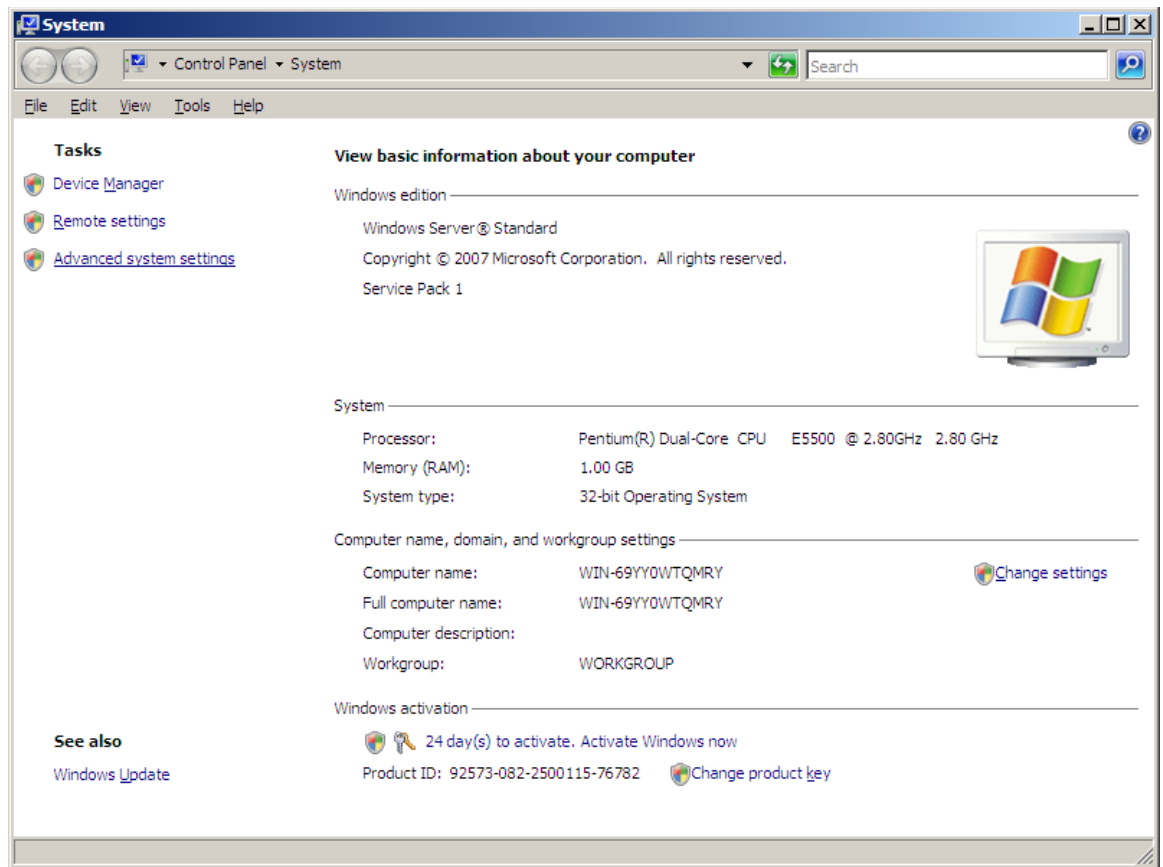


Figure 6-1. Control Panel - System

1. Check the current settings for DEP by opening the System application as shown below and then click on **Advanced system settings**.

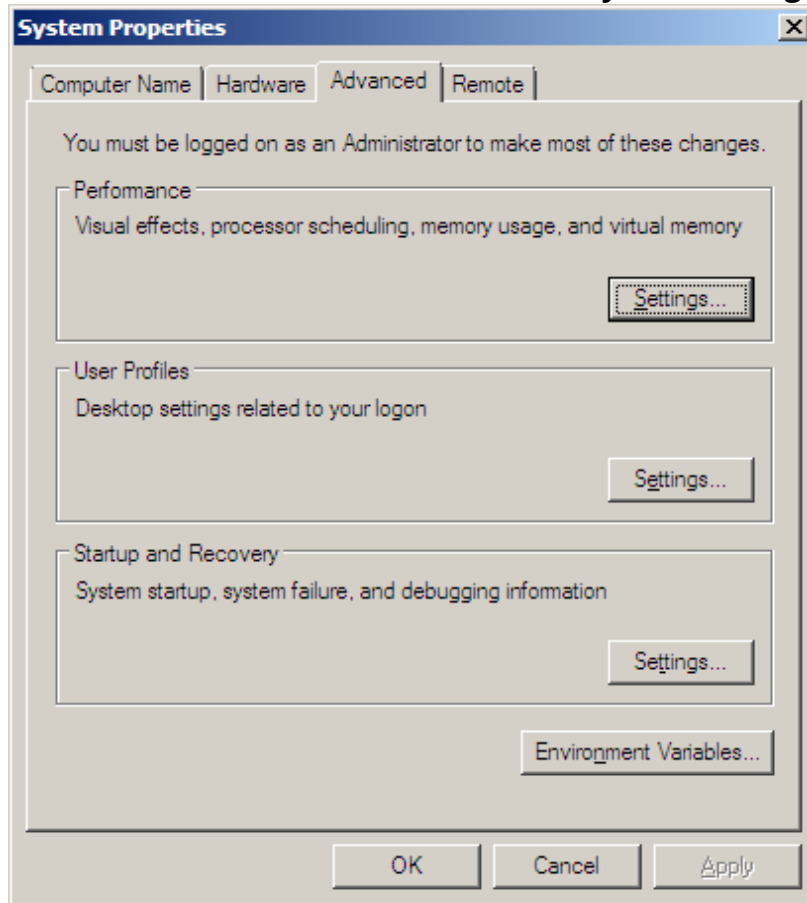


Figure 6-2. System Properties - Advanced Tab

2. Click on the **Advanced** tab followed by **Settings** in the Performance section.

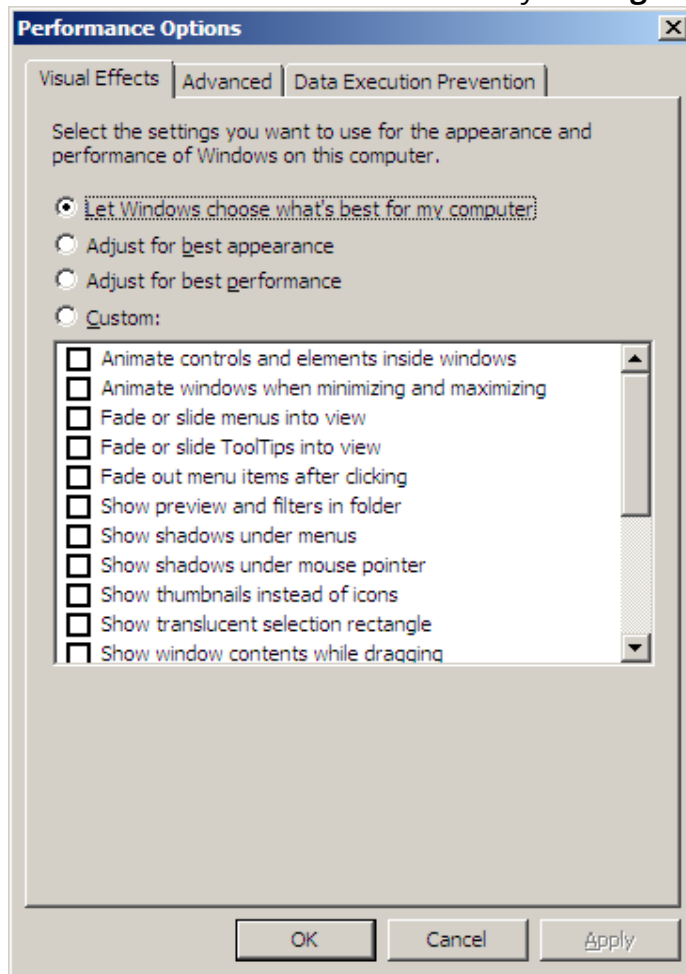


Figure 6-3. Performance Options - Visual Effects Tab

- Click on the **Data Execution Prevention** tab.

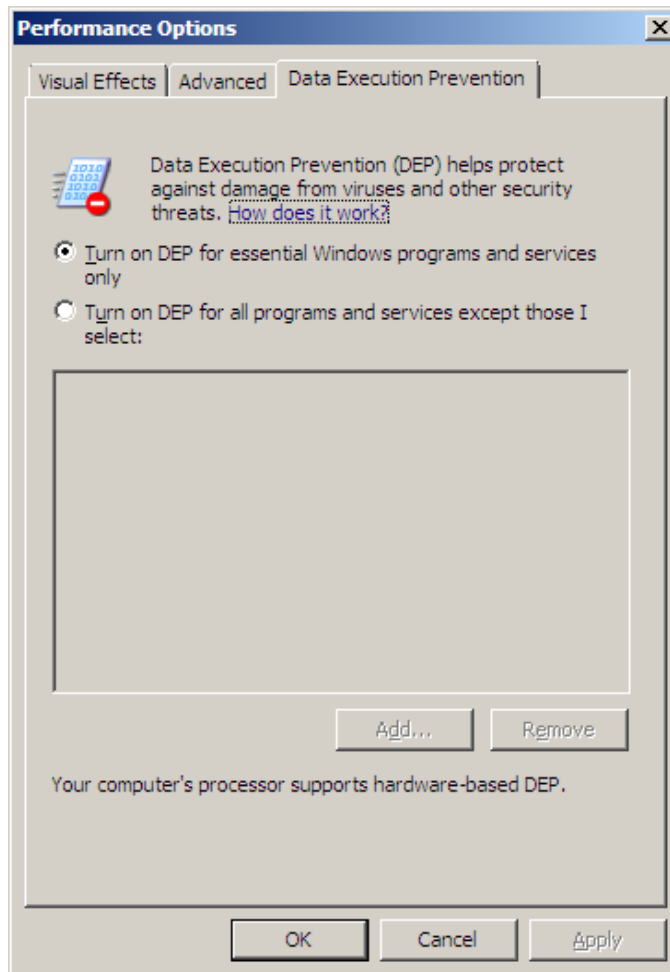


Figure 6-4. Performance Options - Data Execution Prevention Tab 1

- In the above example, DEP is turned on for essential programs and services only.

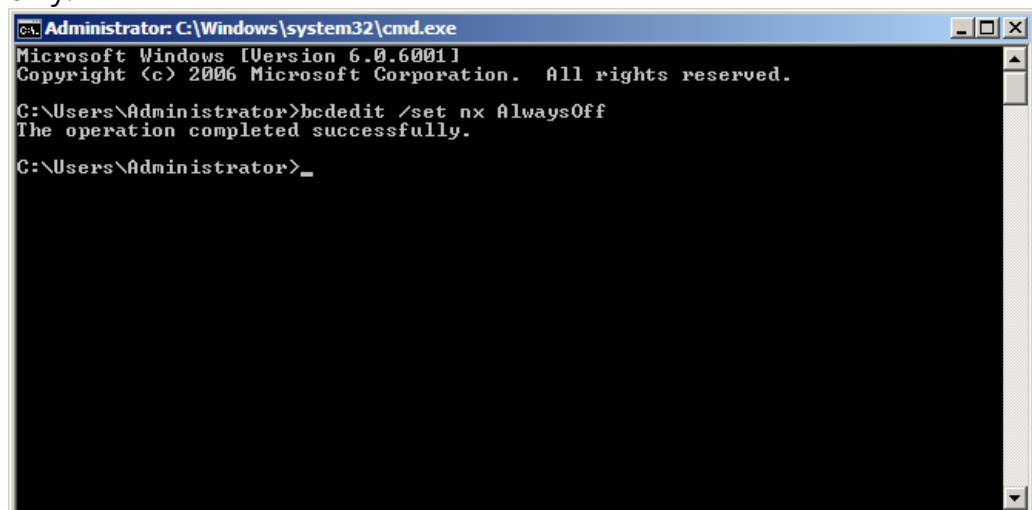


Figure 6-5. Command Prompt

5. Open a Command Line window and enter `bcdedit /set nx AlwaysOff`.
6. Reboot the PC and then check the status of DEP.

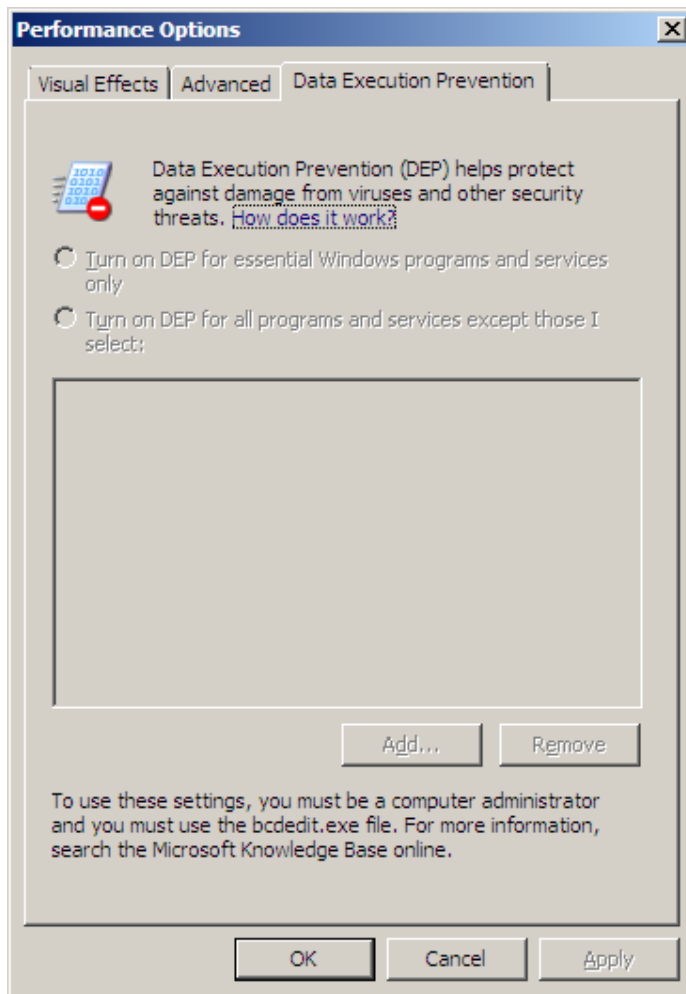


Figure 6-6. Performance Options - Data Execution Prevention 2

7. Note that both options are now grayed out above. This indicates that DEP is completely disabled for this machine.





© NCR Corporation, 2017

NCR endeavors to ensure that the information in this document is correct and fairly stated but does not accept liability for any error or omission.

The development of NCR products and services is continuous and published information may not be up to date. It is important to check the current position with NCR. This document is not part of a contract or license, save insofar as may be expressly agreed.

---

NCR Corporation  
2651 Satellite Blvd.  
Duluth, GA 30096

P/N 89000909  
PIN 45002/074