



ISS 45

- *HP rp5800 Setup*
- *With ISS45 V7 and V8*
-
-
-

HP rp5800 Setup with ISS45 V7 and V8

Date of Issue	Product Identification Number	Part Number	Brief Description
September 2012	45001/119	89000743	Initial Release

**©Copyright StoreNext Retail Technologies LLC 1995-2012
All rights reserved**

This publication is protected by federal copyright law. This document and its contents are the proprietary, confidential information and property of StoreNext.. Unauthorized disclosure, reproduction, distribution or use of this document and/or its contents in any form is strictly prohibited. No part of this publication may be reproduced or transmitted into any human or computer language in any form or by any means, stored in a retrieval system, transmitted, redistributed, translated or disclosed to third parties, or de-compiled in any way including, but not limited to, photocopy, photograph, electronic, mechanical, magnetic or manual without the express written permission of StoreNext Retail Technologies LLC or its licensors, if any. This document, notwithstanding the above, may be distributed in electronic or printed form to personnel who are employed by either (1) a StoreNext customer of the subject system of this document or (2) personnel from an authorized StoreNext dealer of the subject system of this document. All copies, so distributed and/or so authorized, shall contain a full copy of this copyright notice.

StoreNext Retail Technologies LLC has prepared this manual for use by users, authorized third parties and personnel of StoreNext Retail Technologies LLC as a guide to the proper installation, operation, customization and/or maintenance of StoreNext Retail Technologies LLC equipment and software. The drawings and specifications contained herein are the property of StoreNext Retail Technologies LLC and/or its licensors.

StoreNext Retail Technologies LLC endeavors to ensure that the information in this document is correct and fairly stated but does not accept liability for any error or omission. StoreNext Retail Technologies LLC makes no representation or warranties with respect to the contents hereof, and specifically disclaims any implied warranties of merchantability or fitness for a particular purpose or non-infringement. No commitments by StoreNext or its suppliers are made from this documentation which is provided for information only.

Development of StoreNext products and documentation is continuous: StoreNext Retail Technologies LLC reserves the right to revise this publication and to make changes from time to time in the contents hereof or in the products herein described or discussed without notice and without any obligation of StoreNext Retail Technologies LLC to notify any person or organization of such revision or changes. Information published in this document will likely become obsolete over time and it is recommended that users regularly check for updates and newer versions.

The trademarks StoreNext and Retailix are registered trademarks or trademarks of Retailix; all other trademarks or registered trademarks are the property of their respective owners. Third-party products, services, or company names referenced in this document may be trademarked or copyrighted by their respective owners, and are for identification purposes only.

Copyrights, trademarks and license agreements shall be governed and construed in accordance with the laws of the State of Texas and the Federal Arbitration Act, and shall benefit Retailix, its successors, and assigns.

Address comments and corrections to:

StoreNext Retail Technologies LLC
Software Program Director
797 Commonwealth Drive
Warrendale, PA 15086

Table of Contents

Table of Contents.....	1
HP rp5800 Workstation Setup.....	2
Prerequisites	2
Preparing POSReady 7 for ISS45 installation.....	2
Configure POSReady 7 on the HP rp5800 for ISS45 POS	2
Introducing the HP rp5800	7
Loading Drivers.....	10
Epson Printer OPOS	10
Other Devices	28
ELO Touch.....	28
WinPOS Installation.....	38

HP rp5800 Workstation Setup

This section describes the setup of a ISS45 PoS Workstation including instructions for installing the operating system, all necessary prerequisite components of ISS45 and the workstation.

Prerequisites

1. Operating System Recovery CD/DVD for POSReady 7 Recovery CD/DVD if system is not preloaded. You should make an image of the factory image if your machines are preloaded.

NOTE: The operating system and Service Pack level can be checked by doing a Properties on Computer.

2. ISS45 v7.1.5.0-050 and v8.1.6.0-060 or higher are supported on this POS.
3. **Do this First! Prepare POSReady 7 for software installation. See Appendix A.**

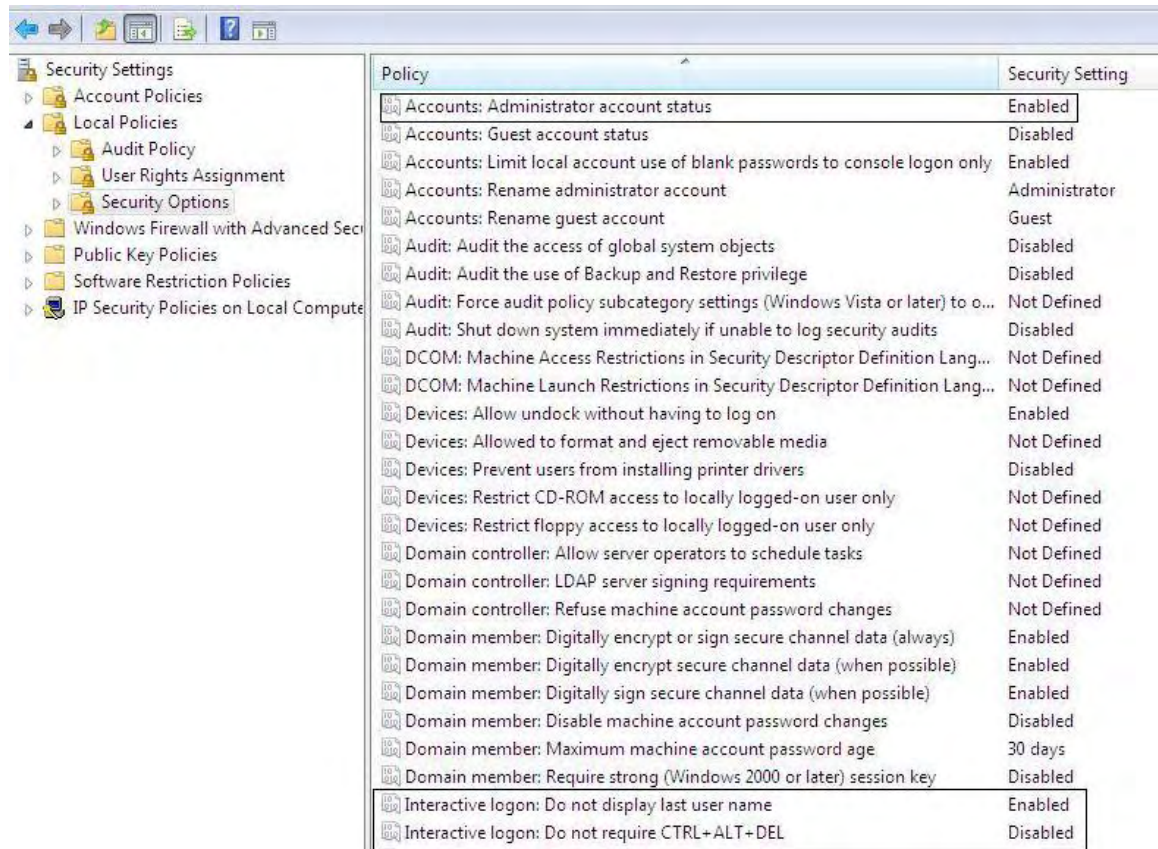
Preparing POSReady 7 for ISS45 installation

Configure POSReady 7 on the HP rp5800 for ISS45 POS

The HP rp5800 comes preloaded with POSReady 7 SP1. For the out-of-box setup, **only attach the keyboard, mouse and monitor**. After powering on, follow the following steps:

1. Set up Windows screen Click Next.
2. Type a user name, i.e., Admin.
3. Type a computer name, i.e., HP-Lane1. Click Next.
4. Set a password for your account screen. Answer the 3 questions. Click Next.

5. Please read the license terms screen. Click both of the I accept..... boxes. Click Next.
6. Help protect your computer and improve Windows automatically screen. Click Ask me later.
7. Review your time and date settings screen. Select your time zone. Set the date and time.
8. Select your computer's current location. Click Work network selection.
9. Windows will now finalize your settings.
10. Windows Settings:
11. Click Start, and type "**secpol.msc**" in the search area and hit Enter. In the left list, choose "**Local Policies**", then "**Security Options**".
12. In the right pane:
13. Set "**Accounts: Administrator account status**" to **Enabled**.
14. Set "**Interactive logon: Do not display last user name**" to **Enabled**.
15. Set "**Interactive logon: Do not require CTRL + ALT + DEL**" to **Disabled**.
16. Set "**User Account Control: Admin Approval Mode for the Built-in Administrator account**" to **Disabled**.
17. Set "**User Account Control: Behavior of the elevation prompt for administrators in Admin Approval Mode to Elevate without Prompting**".



18. Next double click the User Rights Assignment under Security Settings and double click “**Log on as a service**”, click Add User or Group, type in “Administrator” and click the Check Names button. Click Ok, click Apply (click Ok if an error occurs), click Ok and close secpol.msc.
19. Log off and log back in as the Administrator (No password required yet).
20. Setting the Administrator’s password.
21. Click Start and open Control Panel. Change View by: to small icons
22. Select “User Accounts”.
23. Click “Change your Windows password”.
24. Click “Create a password for your account”.

25. Make the password the same as the administrator password on the Server.
26. Enter hint if so desired. Click Create password. **Do not forget this password or you may have to reinstall Windows 7!**
27. You should be back at the "Make changes to your user account" screen.
28. User Account Control (UAC) is off by default.
29. Close the Control Panel.
30. Reboot and log back in as the Administrator with the new password.
31. Click Start and open Control Panel. Change View by: to small icons if not already set.
32. Under Windows Update.
33. Click Change Settings.
34. Click the drop down arrow and select Never check for updates.
35. Click OK.
36. Return to the main Control Panel.
37. Click Power Options.
38. Click the down arrow by the Show additional plans.
39. Click High Performance.
40. Click Choose what the Power Buttons do.
41. Click the drop down arrow next to When I press the power button.
42. Select Shut down.
43. Click on Don't require a password option on this screen.
44. Click Save Changes.
45. Return to the main Control Panel.
46. Click Network and Sharing Center.
47. Click Change adaptor settings.
48. Right click the Local Area connection and click Properties.
49. Click the Configure button, verify/set that all options under Power Management are unchecked.

50. Click OK.
51. Right click the Local Area connection and click Properties.
52. Highlight Internet Protocol Version 4 and click Properties. Fill in the IP address information. Click OK. Click Close.
53. Return to the Network and Sharing Center.
54. Click Change advanced sharing settings. Ensure that the option Turn on network discovery and Turn on file and printer sharing are turned on. Scroll down and turn off Password protected sharing. Do this for both the Home or Work and Public sections.
55. Click Save changes.
56. Return to the Control Panel.
57. Click Date and Time.
58. Uncheck Notify me when the clock changes
59. Click Internet Time (Synchronize with an Internet Time Server is on by default).
60. Click Change settings.
61. Uncheck Synchronize with an Internet time server.
62. Click Ok.
63. Click Apply, Click Ok
64. Return to the Control Panel.
65. Click Action Center.
66. Change Action Center settings.
67. Uncheck any items, i.e. Windows Update, Firewall, etc. that you don't want Windows to pop notification messages. (Recommended to uncheck all)
68. Click OK.
69. Return to Control Panel.

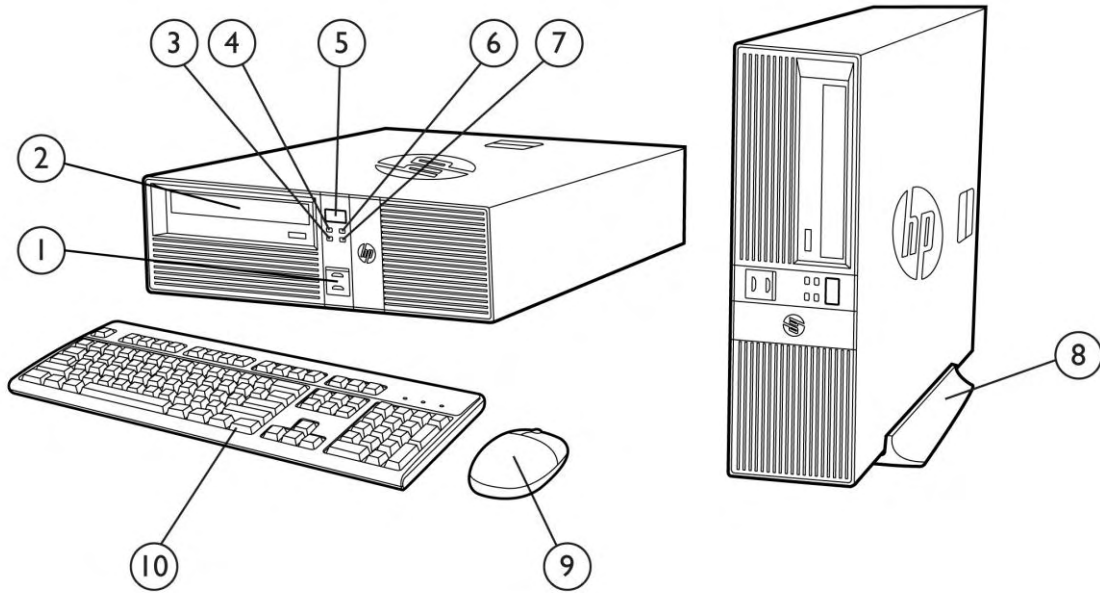
70. Click Windows Firewall.
71. Click Turn Windows Firewall on or off.
72. Turn off both private and public firewall options.

73. Click Ok.
74. Return to Control Panel.
75. Click Display.
76. Select Adjust Resolution and set to 800 X 600.
77. Click Apply.
78. Click to keep changes.
79. Click through warnings.
80. Close the Control Panel.
81. If the computer name or workgroup name needs changed, click System.
82. Click Advanced system settings.
83. Under the Computer name tab, domain and workgroup settings, click Change setting. If prompted for a reboot, accept and let the system reboot to update its settings.

POSReady 7 should now be ready for software installation.

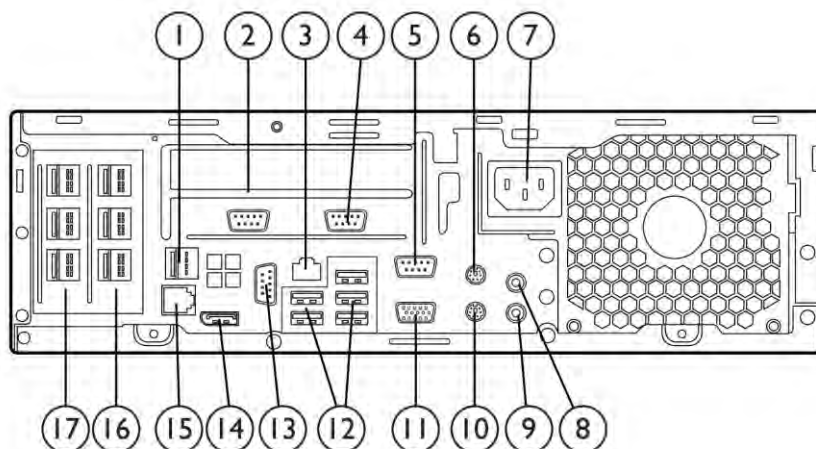
Introducing the HP rp5800

See the StoreNext website for configurations and packages for this product as well as individual components. Tech Bulletin MB-POS-1236 dated July 30, 2012. See http://h18004.www1.hp.com/products/quickspecs/13982_na/13982_na.pdf for full technical specs. Note. Not all configuration may be available through StoreNext. Setup and troubleshooting manuals are available on the HP website.



1. 2 USB 2.0 ports with sliding door
2. 5.25" external optical drive
3. NIC link indicator LED
4. Power/ Diagnostic LED
5. Power button

6. Hard Drive LED
7. NIC activity indicator LED
8. Stand for vertical configuration (optional)
9. HP 2-button scroll mouse-(optional)
10. HP Standard keyboard (optional)



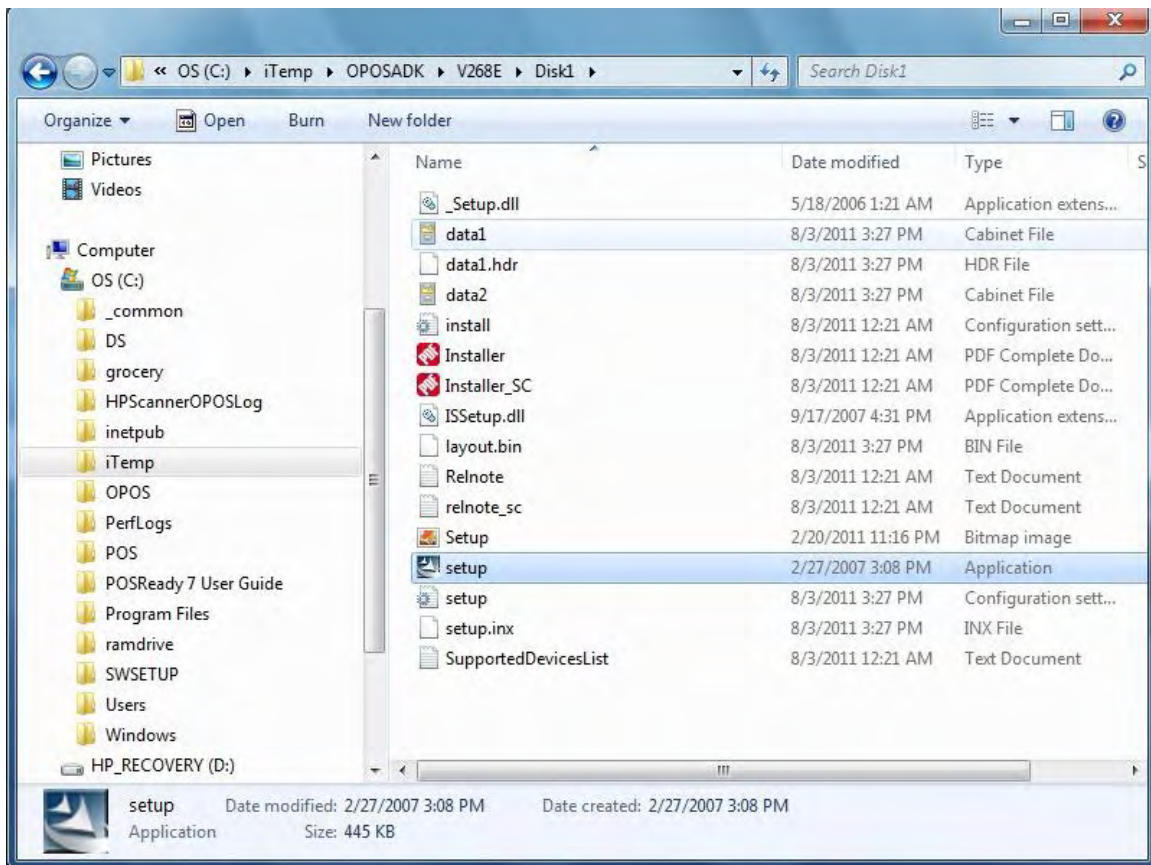
- | | |
|---|---|
| 1. 24 Volt USB + PWR port | 10. PS/2 keyboard port |
| 2. Two (2) Full-Height Slots*. Can be configured either as two (2) PCI or two (2) PCIe x1 Full-Height slots. Shown is optional 2 Port RS232 serial (power configurable) Card, COM4 port (left) and COM3 port (right port) | 11. VGA port |
| 3. RJ-45 LAN jack | 12. 5 USB 2.0 ports |
| 4. RS232 serial COM3 (as described in item 2) | 13. RS232 serial (power configurable) |
| 5. RS232 serial (power configurable) COM1 port COM2 port | 14. Display Port |
| 6. PS/2 mouse port | |
| 7. 240W EPA – Active PFC power supply (no line switching required) | 15. RJ12 cash drawer port |
| | 16. One (1) PCIe x16 Slot* – shown is optional three (3) port 12 Volt USB +Power Card |
| 8. Line in audio jack | 17. One (1) PCIe x1 Slot* (shown is optional three (3) port 12 Volt USB + Power Card |
| 9. Line out audio jack | |

Loading Drivers

The HP rp5800 comes preloaded with POSReady 7 SP1 and all the component level drivers that are required for it including OPOS v1.13 Common Control Object. There are additional drivers that you need to load. They are:

Epson Printer OPOS

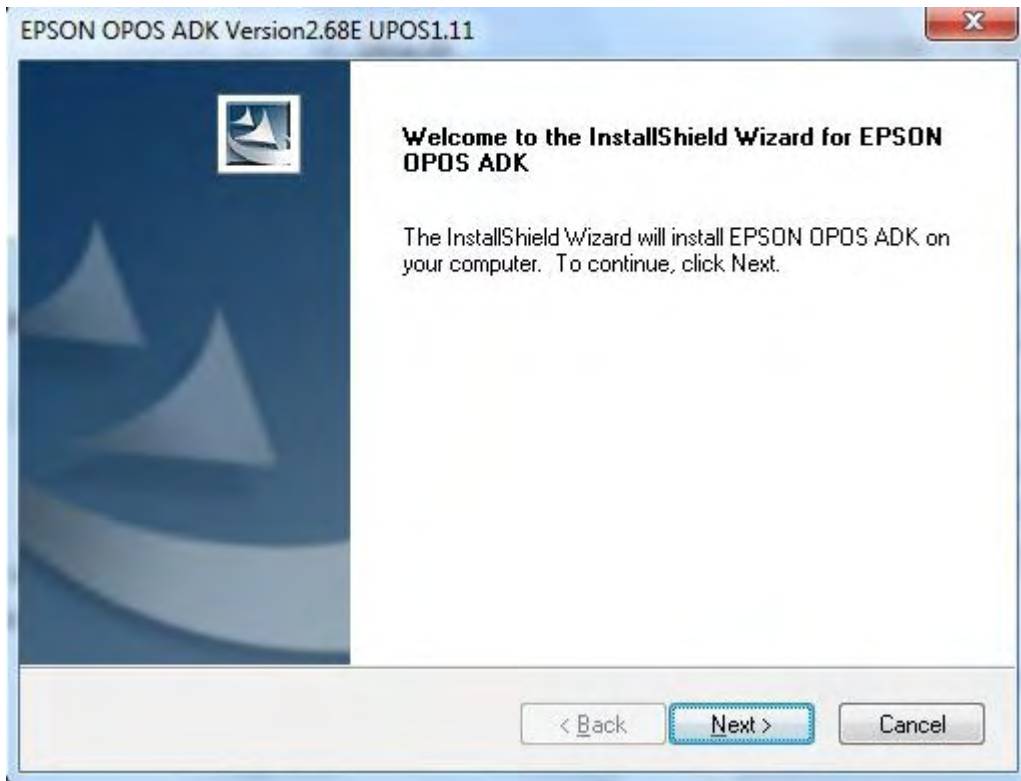
Download the Epson OPOS ADK v2.68E and install.



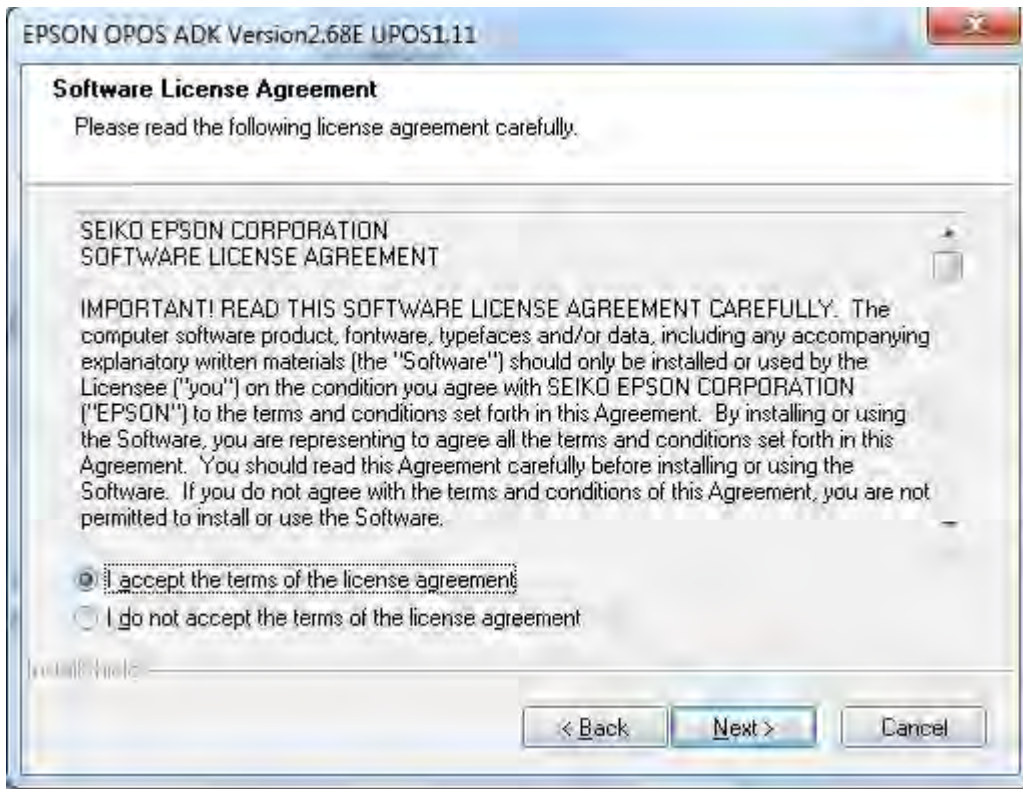
Right Click Setup.exe and run as administrator.



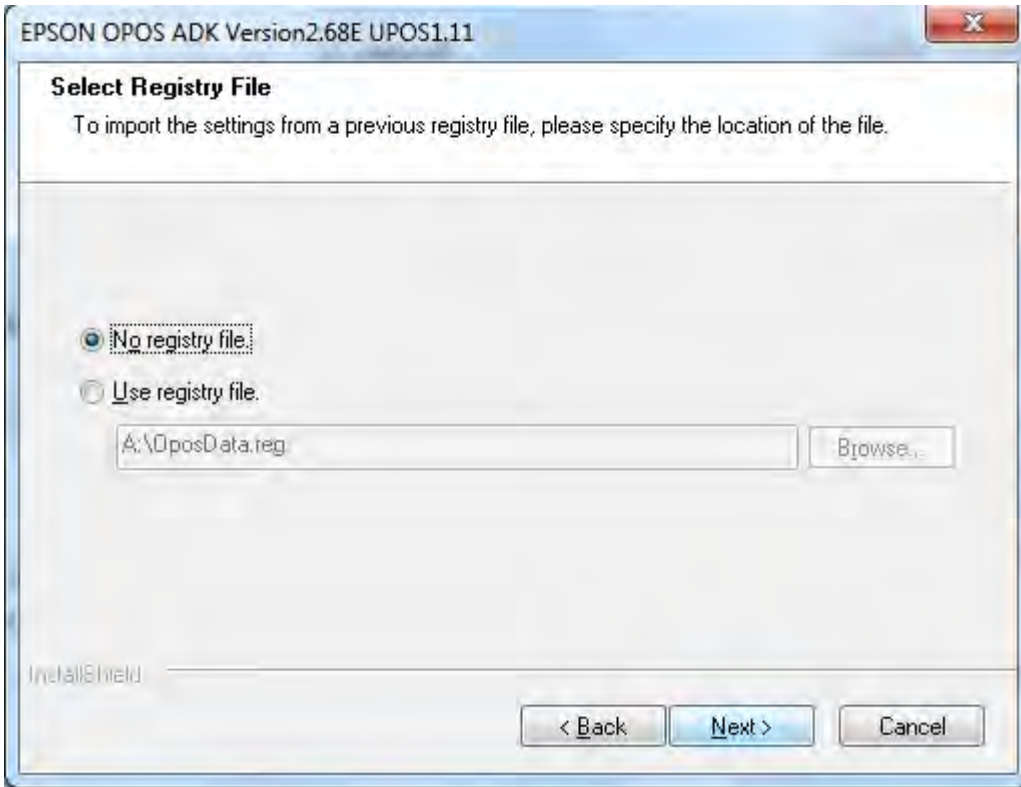
Click Ok.



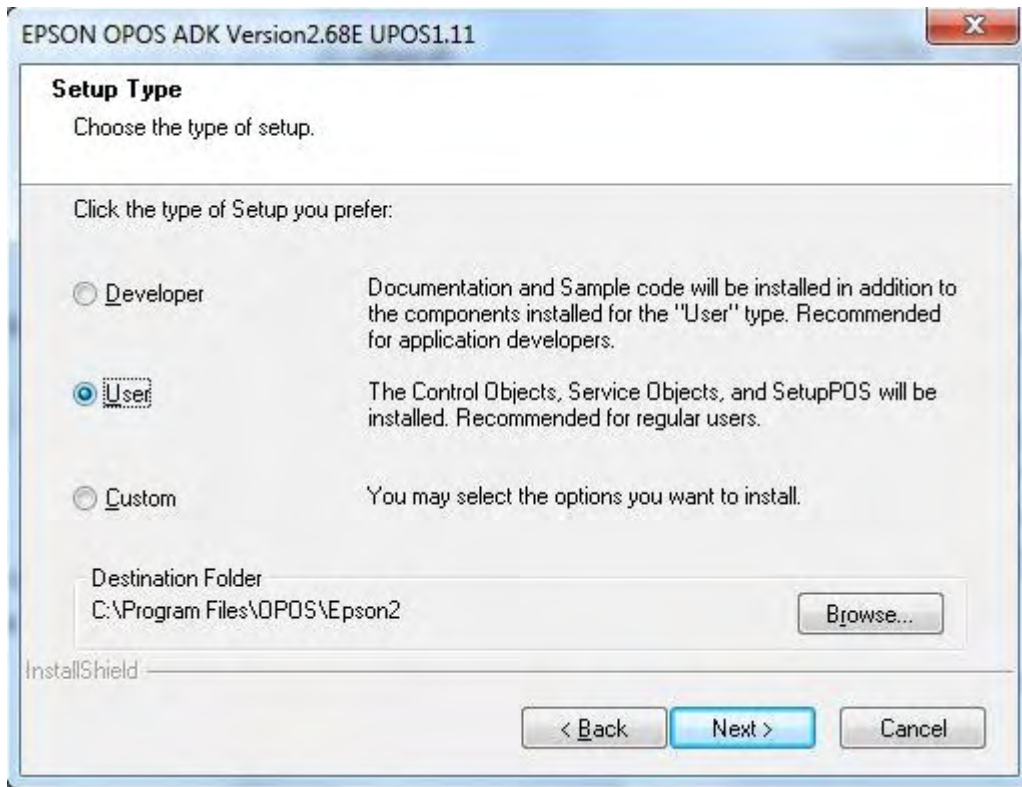
Click Next.



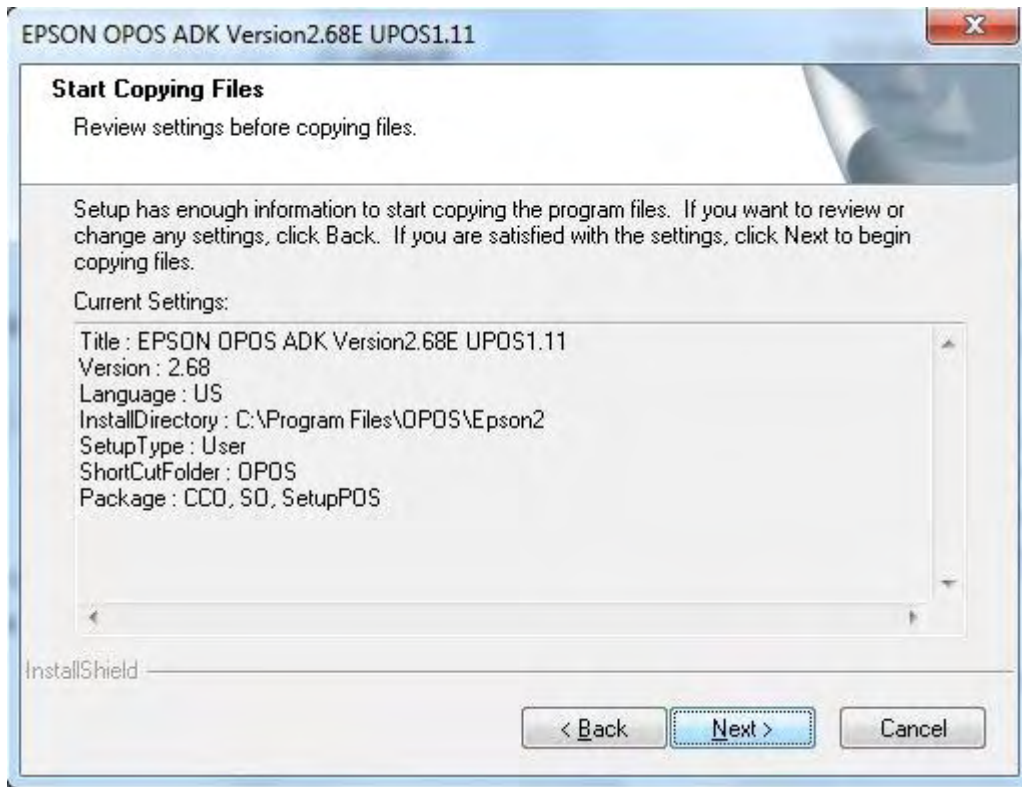
Click I accept the terms of the license agreement and Click Next.



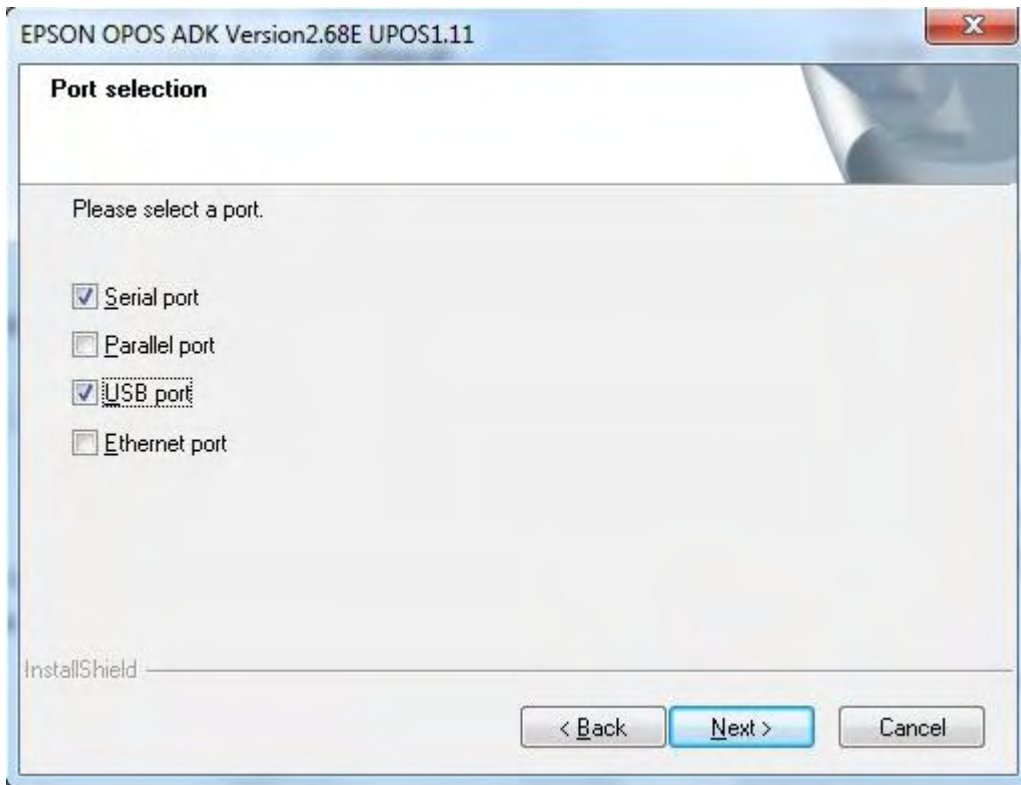
Click Next.



Click User and Click Next.

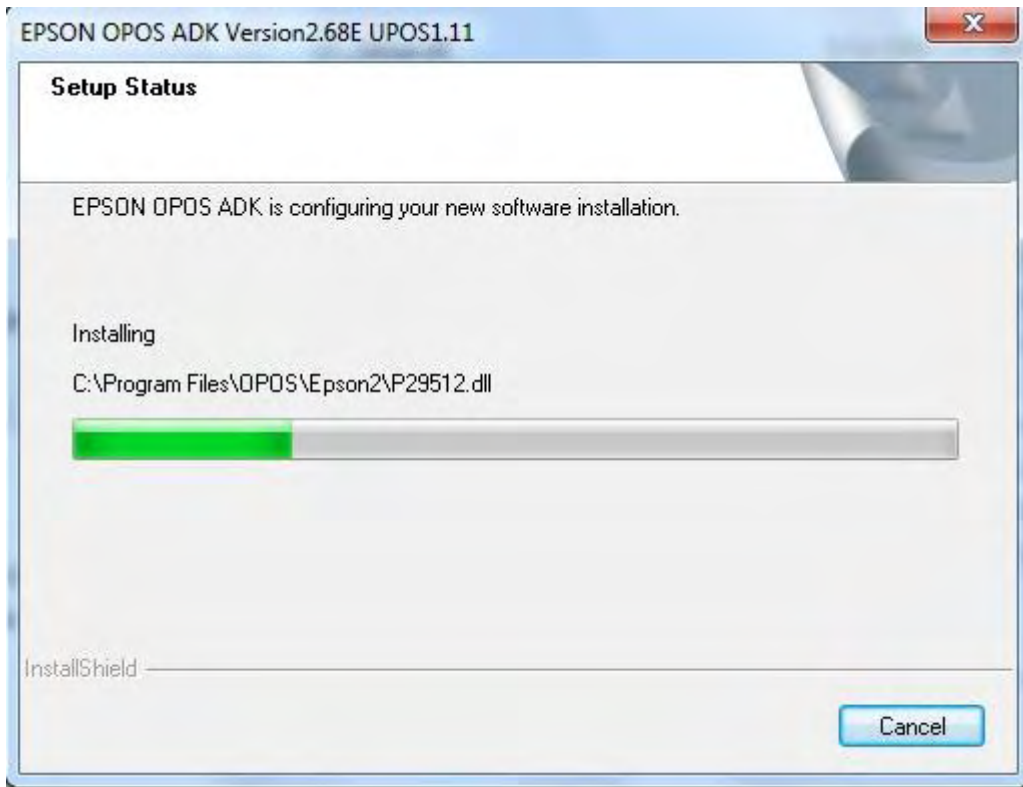


Click Next.

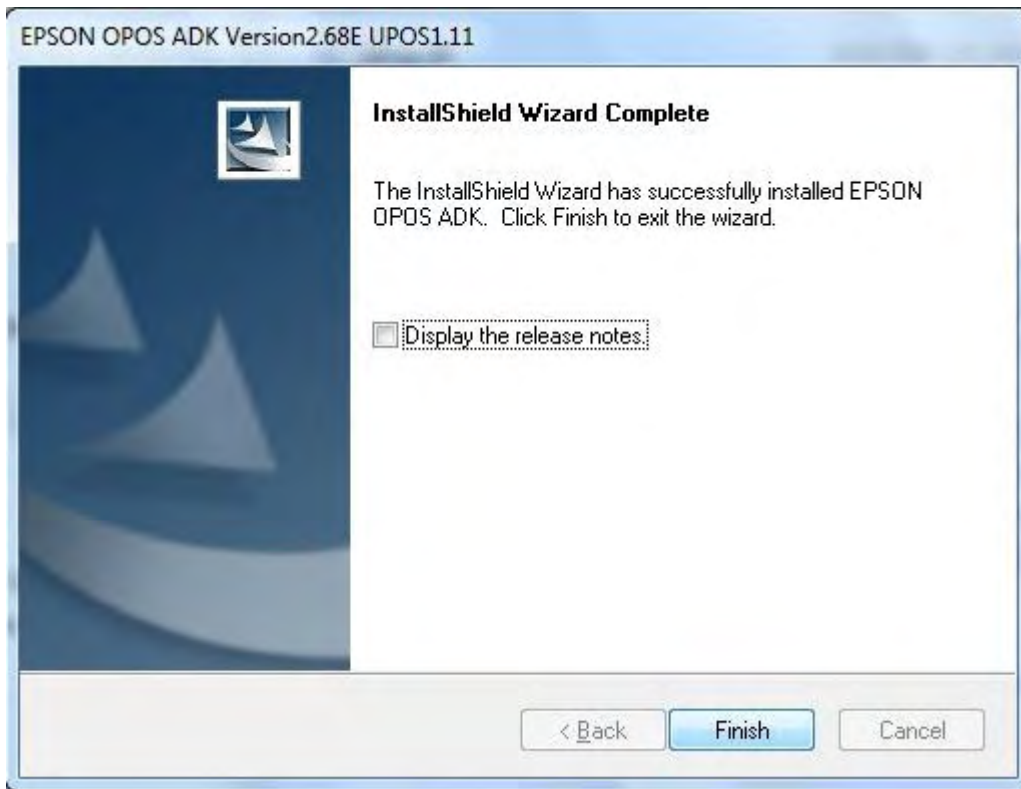


Select the port type of the printer. Multiple types can be installed.

Click Next.

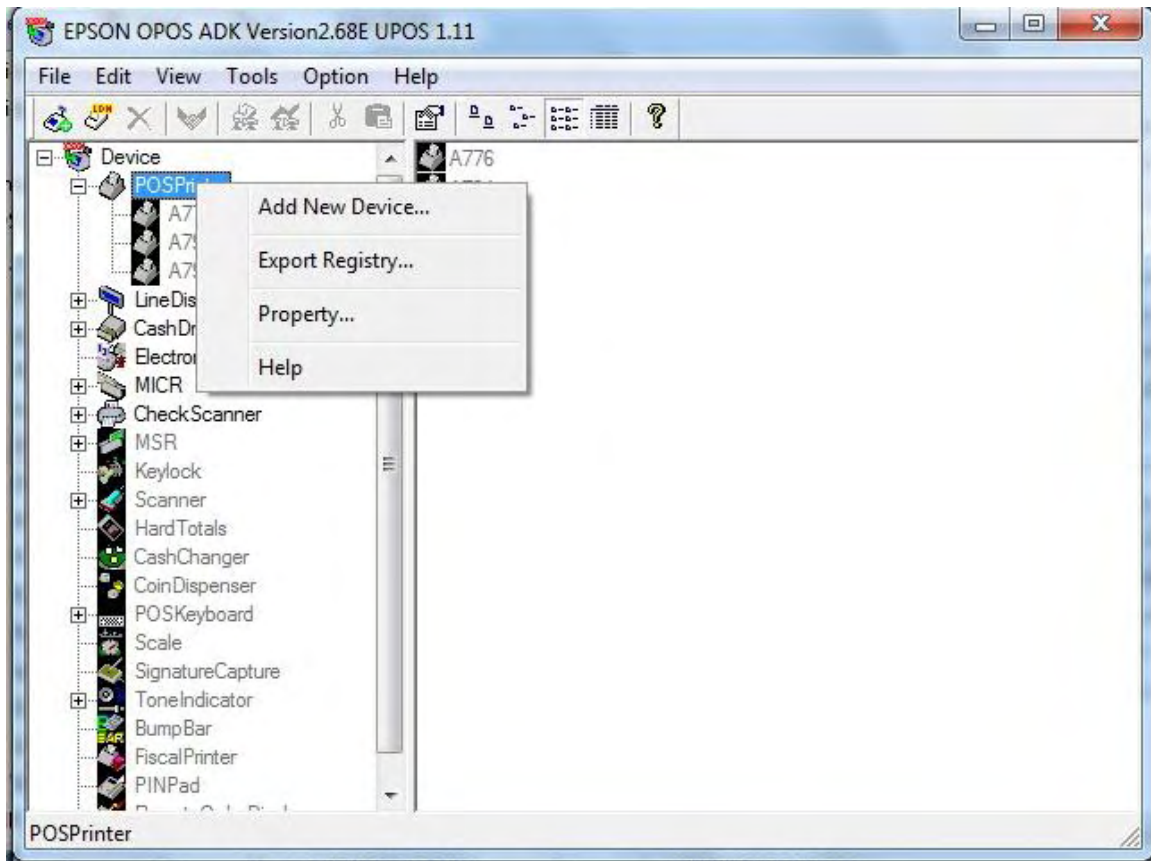


Setup starts installing files.



Setup completes. Click Finish.

After the setup completes the Epson Device setup runs.



Right Click POSPrinter and click Add New Device. Your printer and cash draw may differ from the following selections. If so, just choose that device from the drop down list.

Add New Device [Select DeviceNameKey]

Add New Device

Select Device Name: TM-H6000III

Select detailed model: TM-H6000III

Display Ver1.xx Display Ver2.xx

Used Port: TMPORT

Device Description: EPSON TM-H6000III POS Printer

INF File Name: C:\PROGRA~1\OPOS\Epson2\PpH6k3.INF

Add New LDN

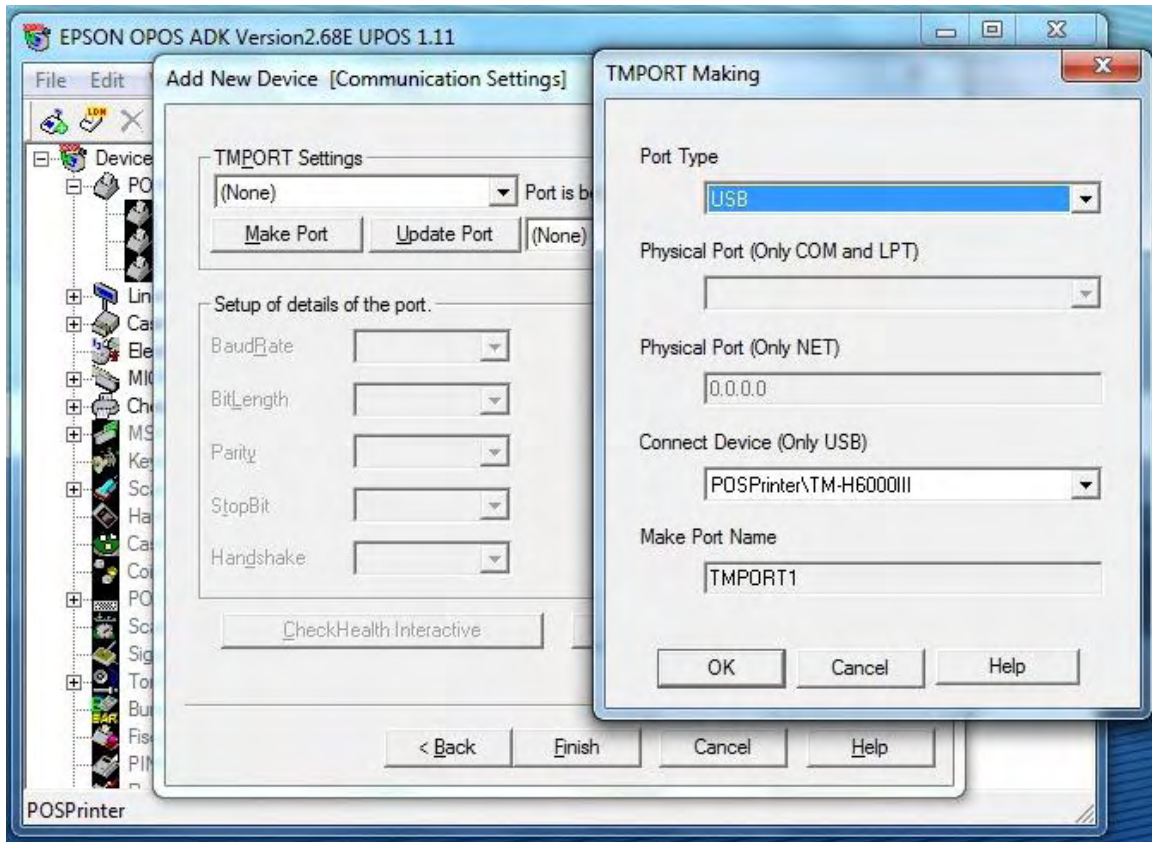
Set up a logical device name if necessary.

- A logical device name isn't indispensable.
- A logical device name isn't set up in the case as the blank.
- And, a logical device name can be set up even later.

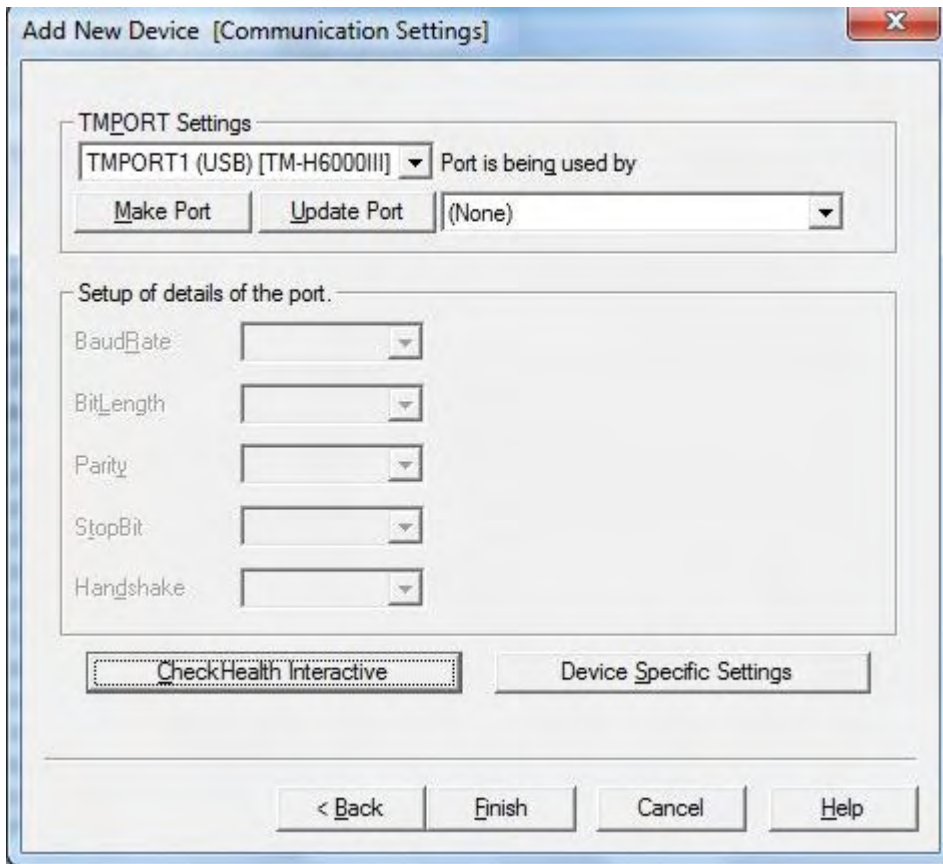
TM-H6000IIIU

< Back Next > Cancel Help

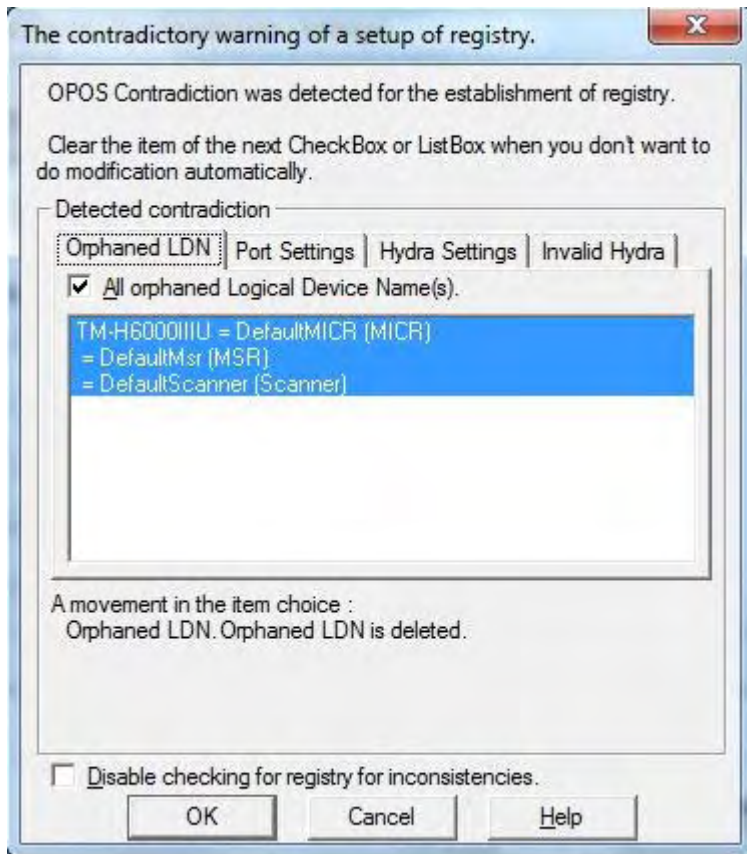
Select the printer model from the drop down list and add TM-H6000IIIU in the Add New LDN section. Click Next.



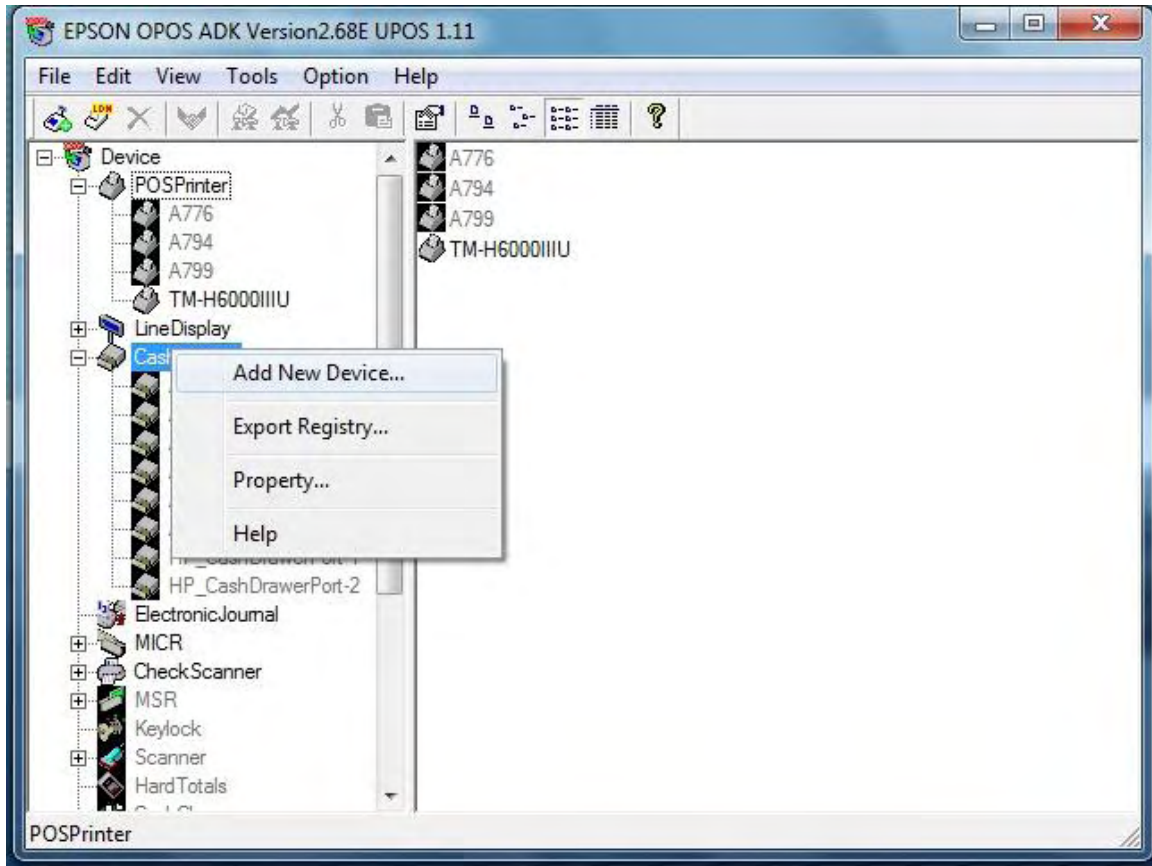
Click Make Port and select Port Type and click Ok.



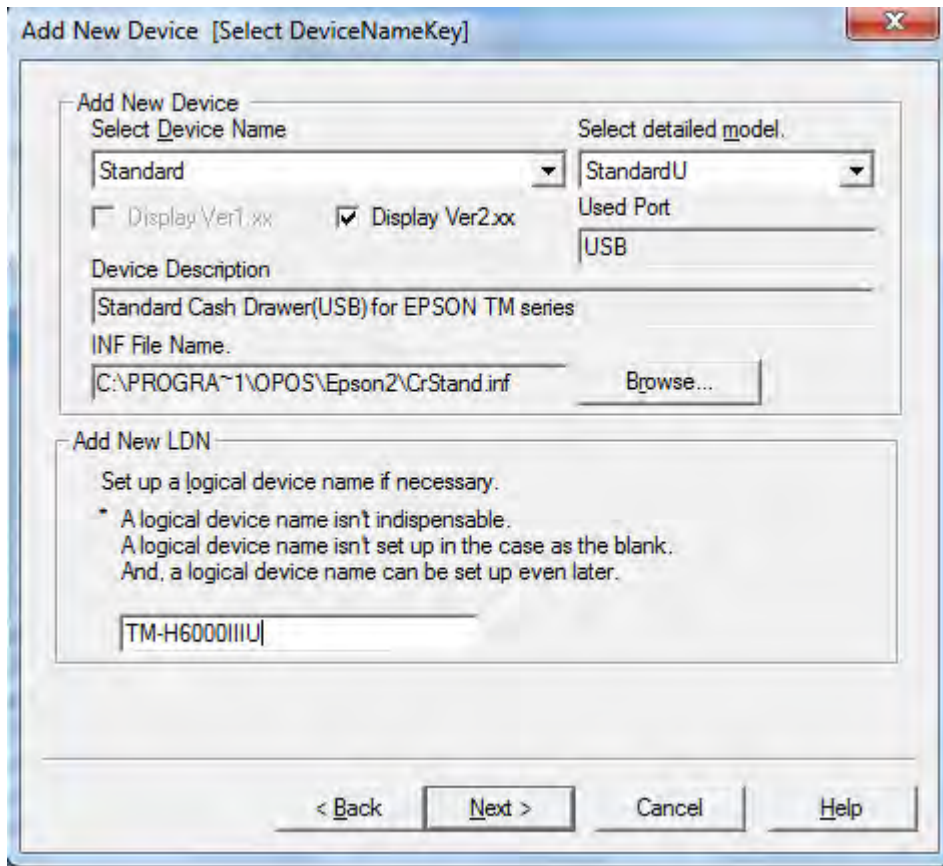
Click Finish.



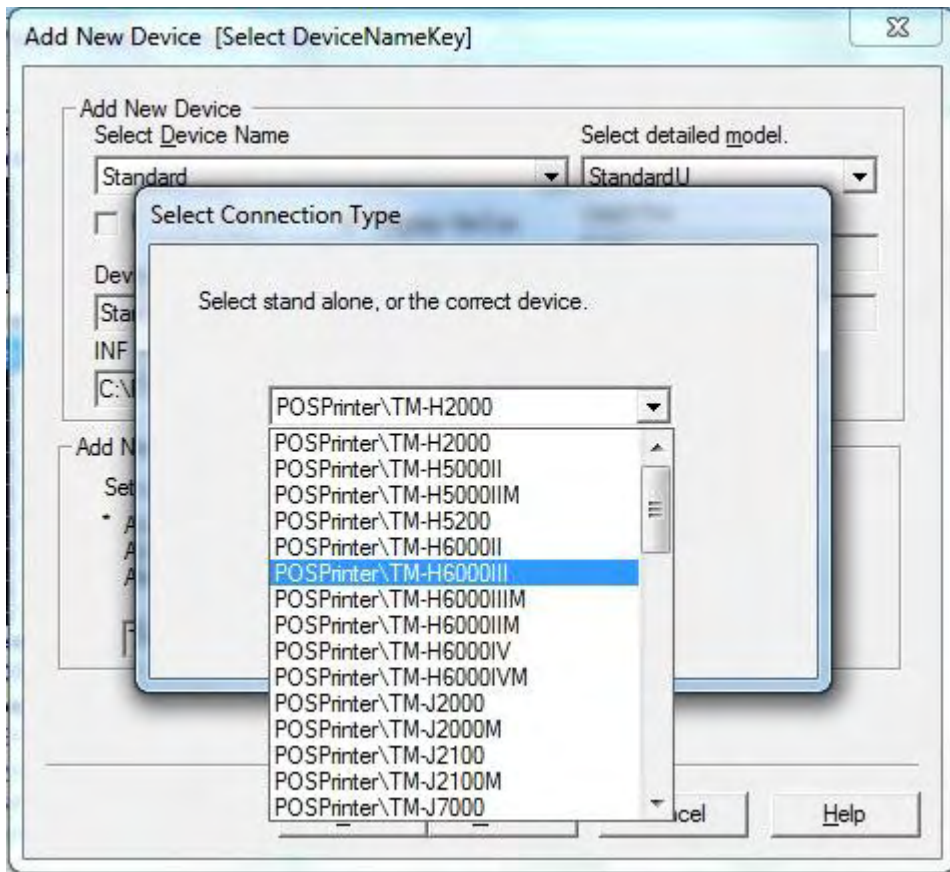
Result of this screen may vary. Click Ok.



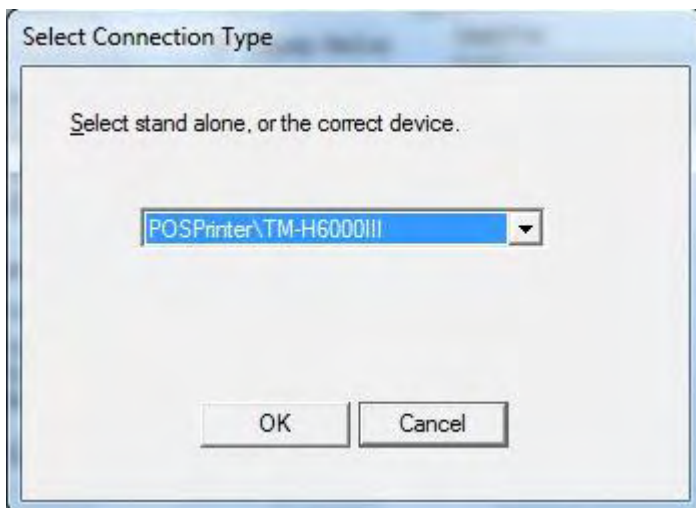
Right click CashDrawer and click Add New Device.



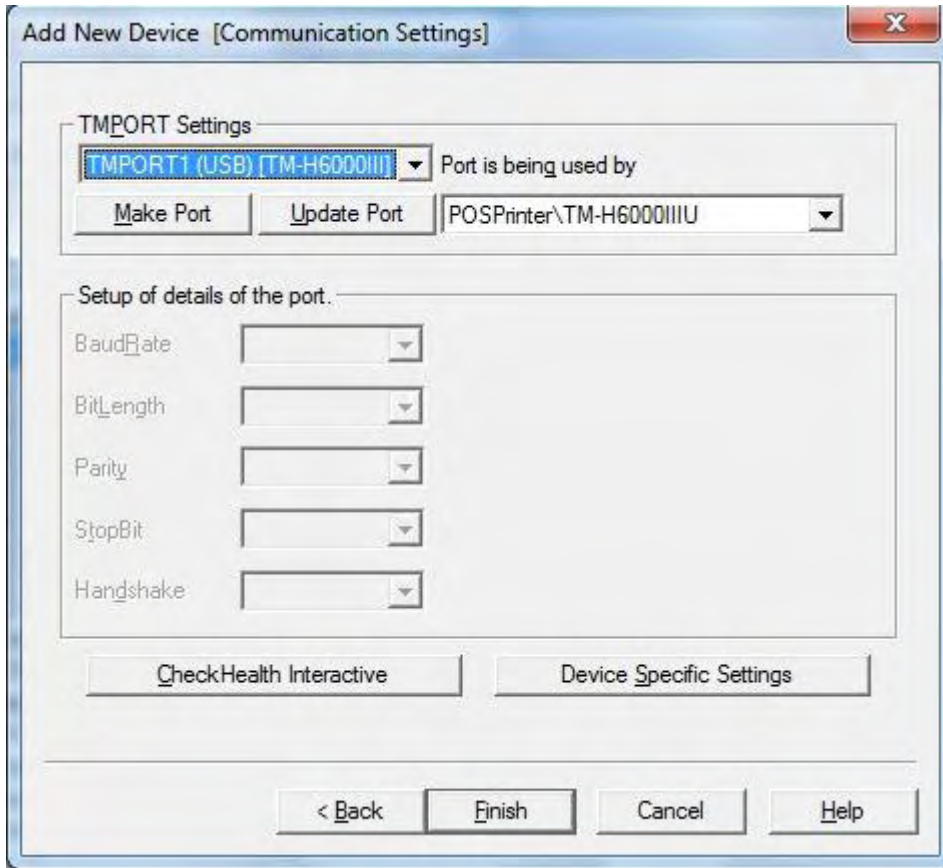
Select Standard for the Device Name and StandardU for the detailed model (assuming this is a USB device). Enter TM-H6000IIIU in the Add New LDN section.



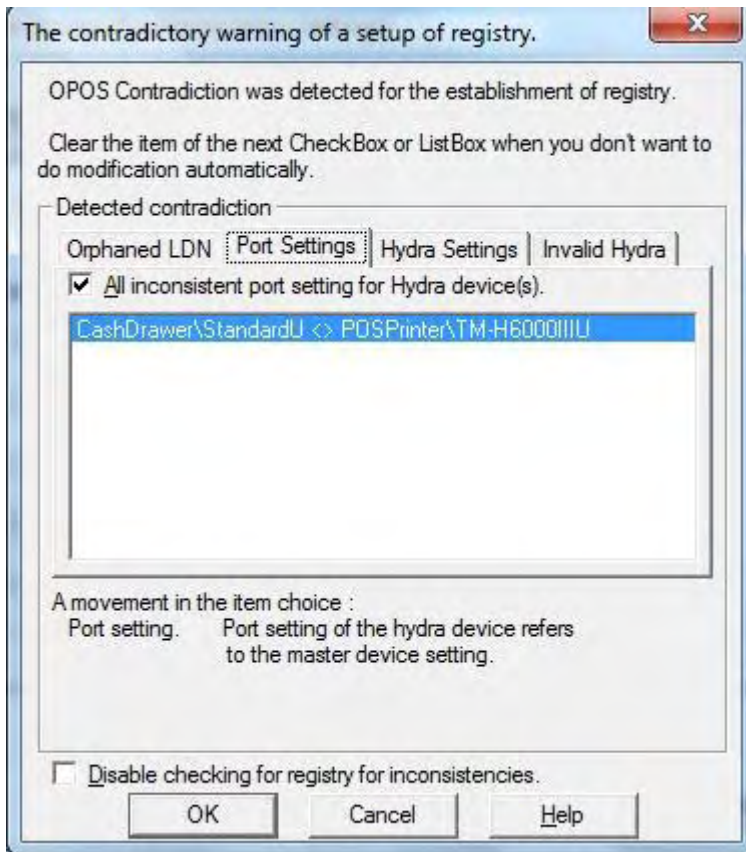
Select the POSPrinter type if the cash drawer is connected to a printer and click Ok.



Click Ok.



Click Finish.



Click Ok and close Epson setup.

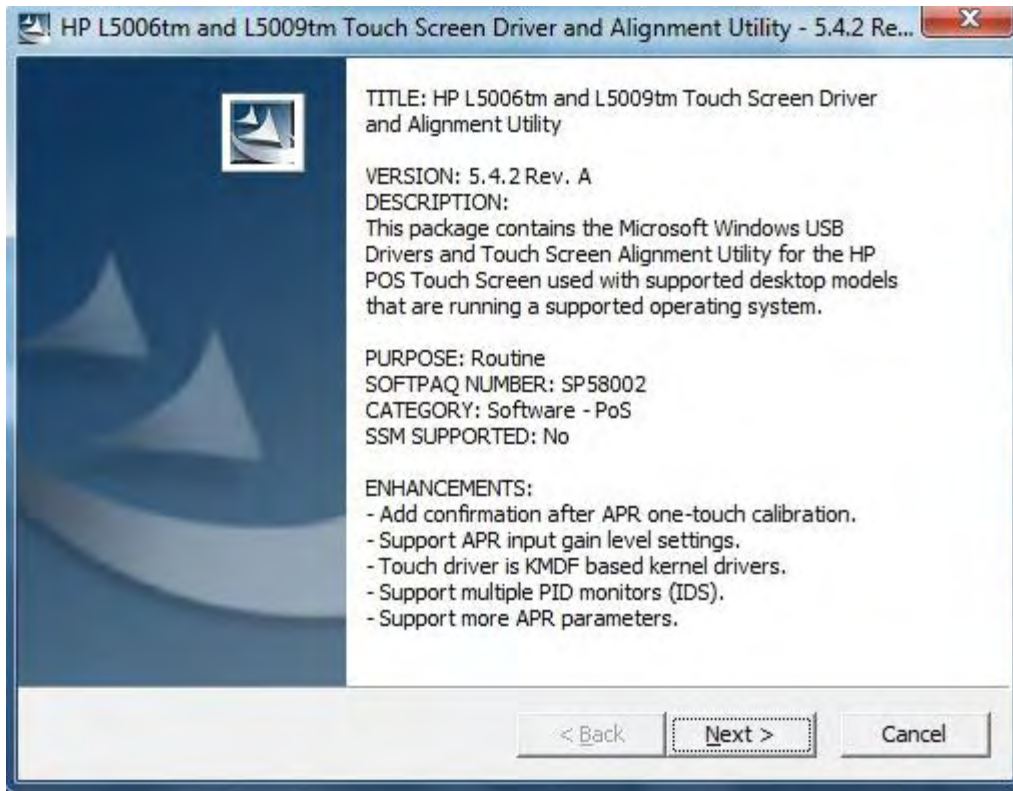
Other Devices

Install any other required OPOS drivers to support additional hardware according to the ISS45 installation manuals found on the StoreNext website.

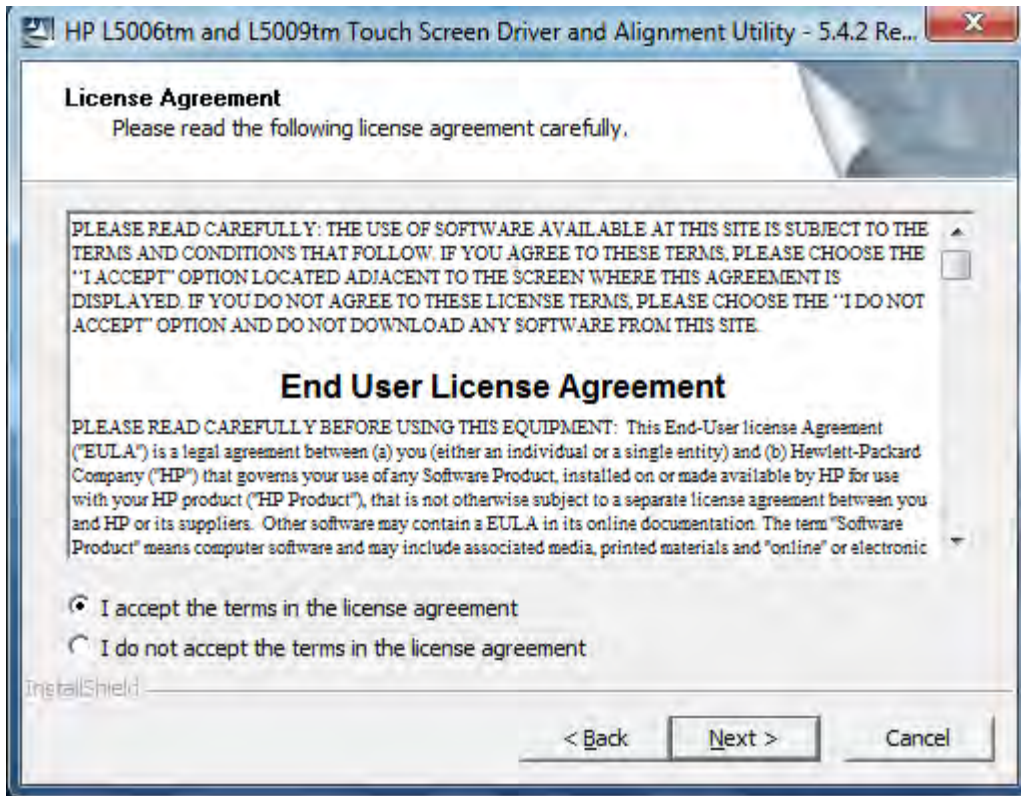
ELO Touch

Download the ELO HP driver v5.4.2 and run the install.

An error message No Touch screen found may occur. If so, reboot. The touch screen should now be detected.



Click Next.



Click I accept the terms in the license agreement.

Click Next.



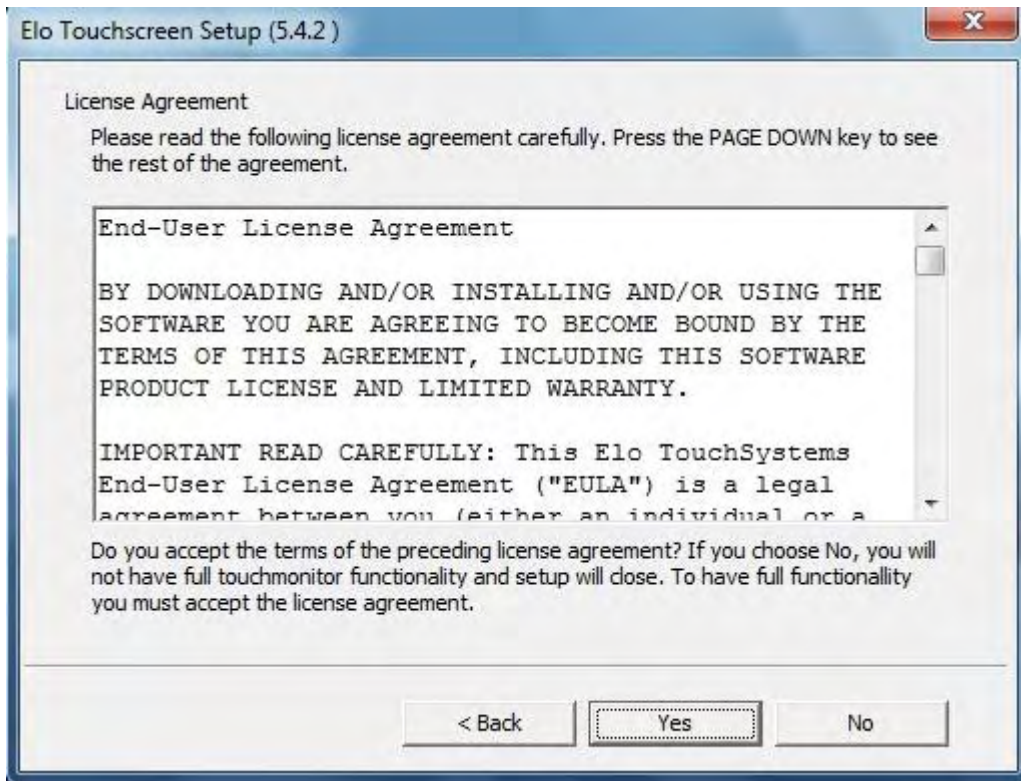
Click Next.



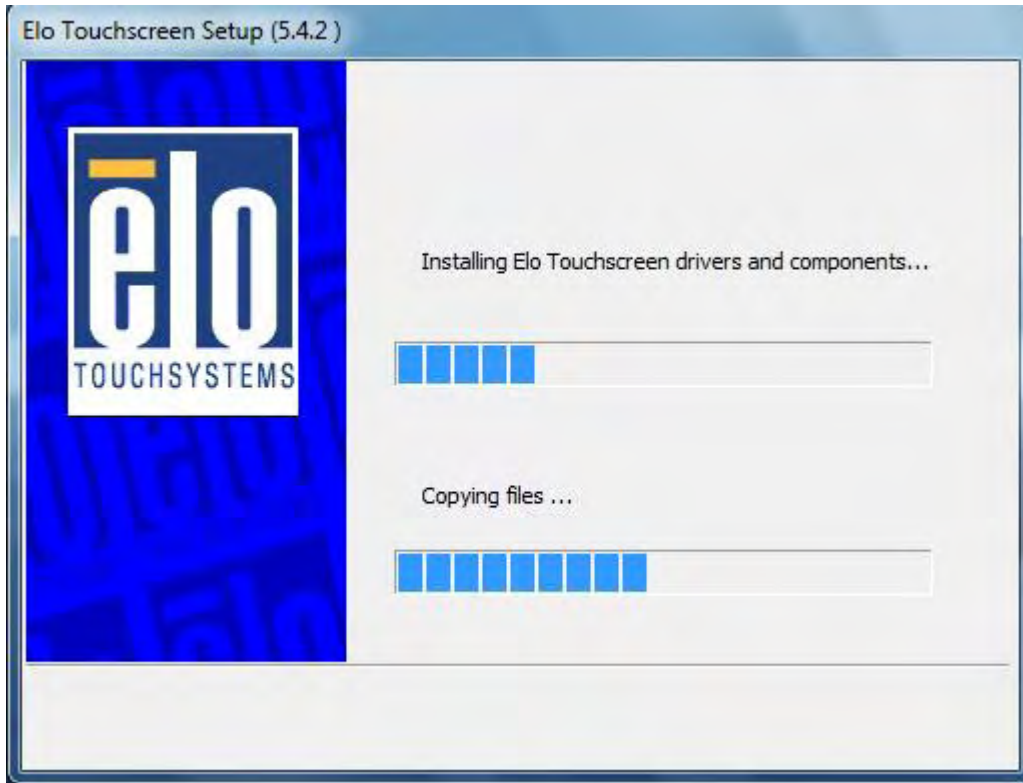
Click Next.



For the L5006tm Click Next.



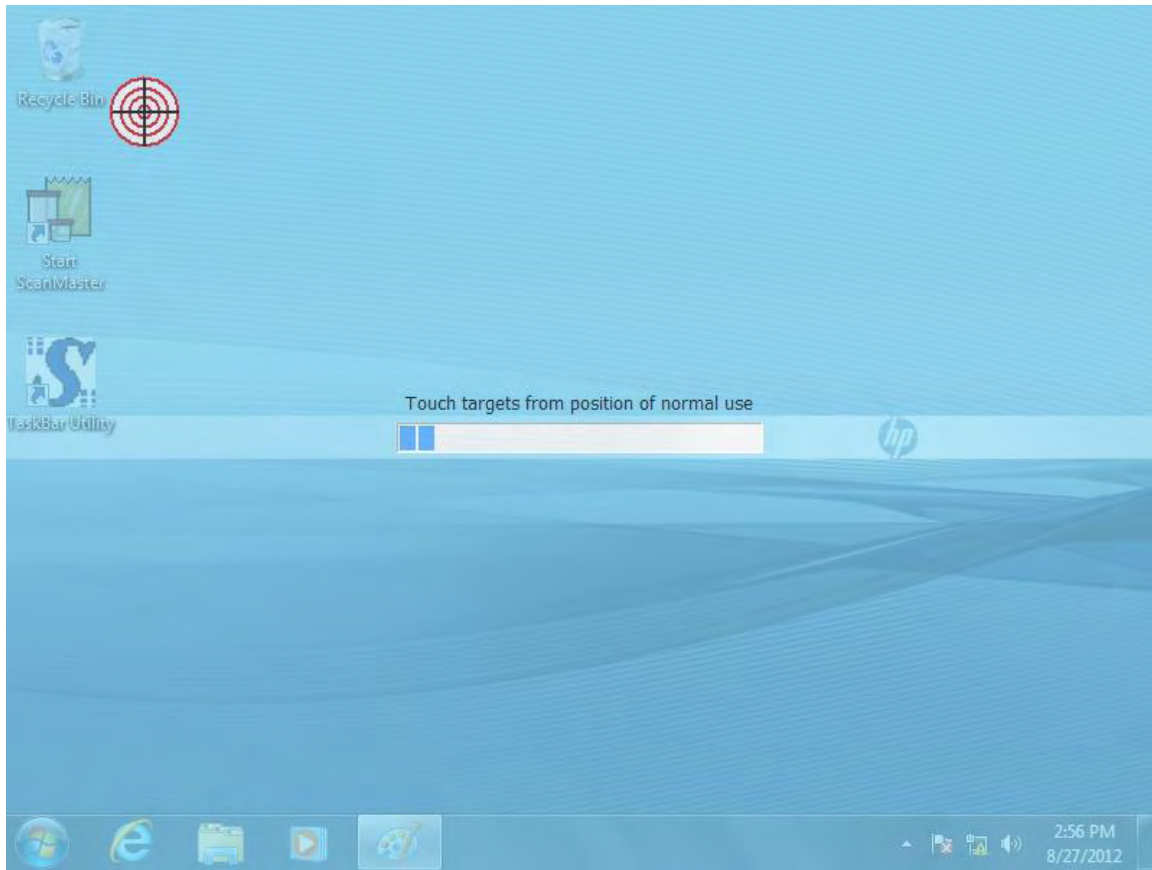
Click Yes.



Components are installed.



Click Finish.

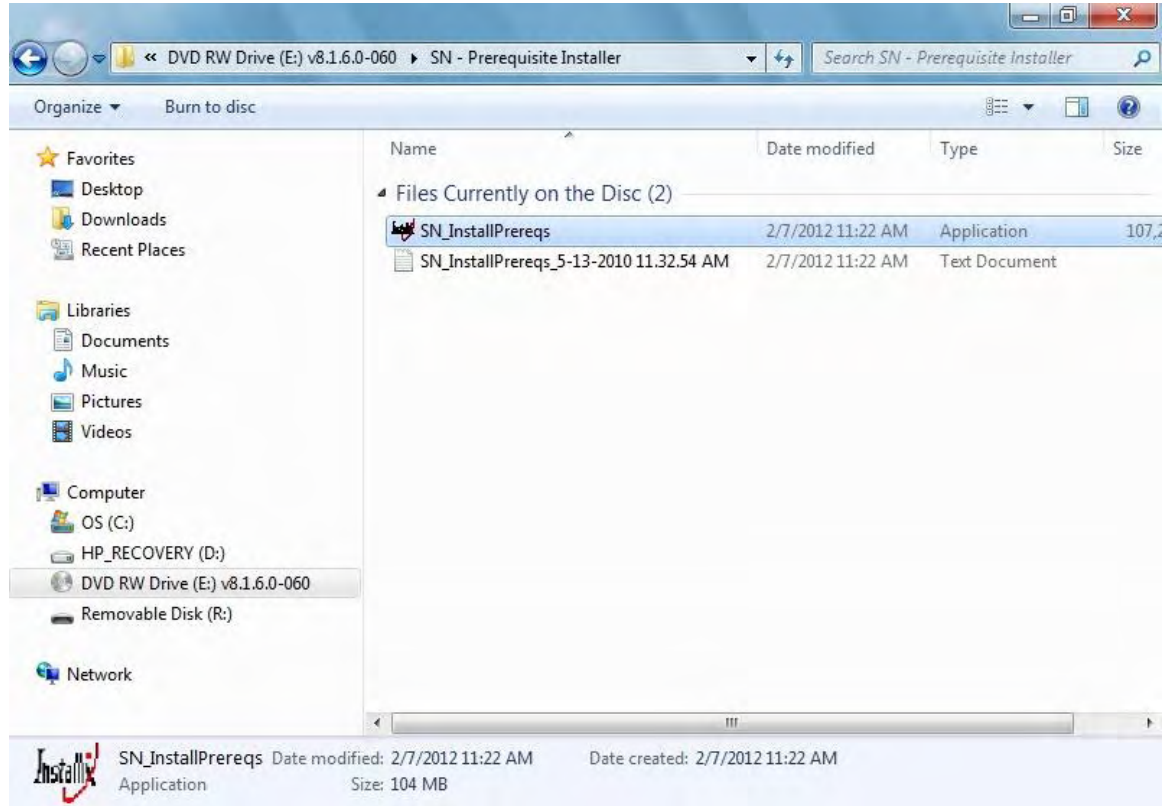


Multiple targets will appear. Touch each target center and complete calibration. Reboot.

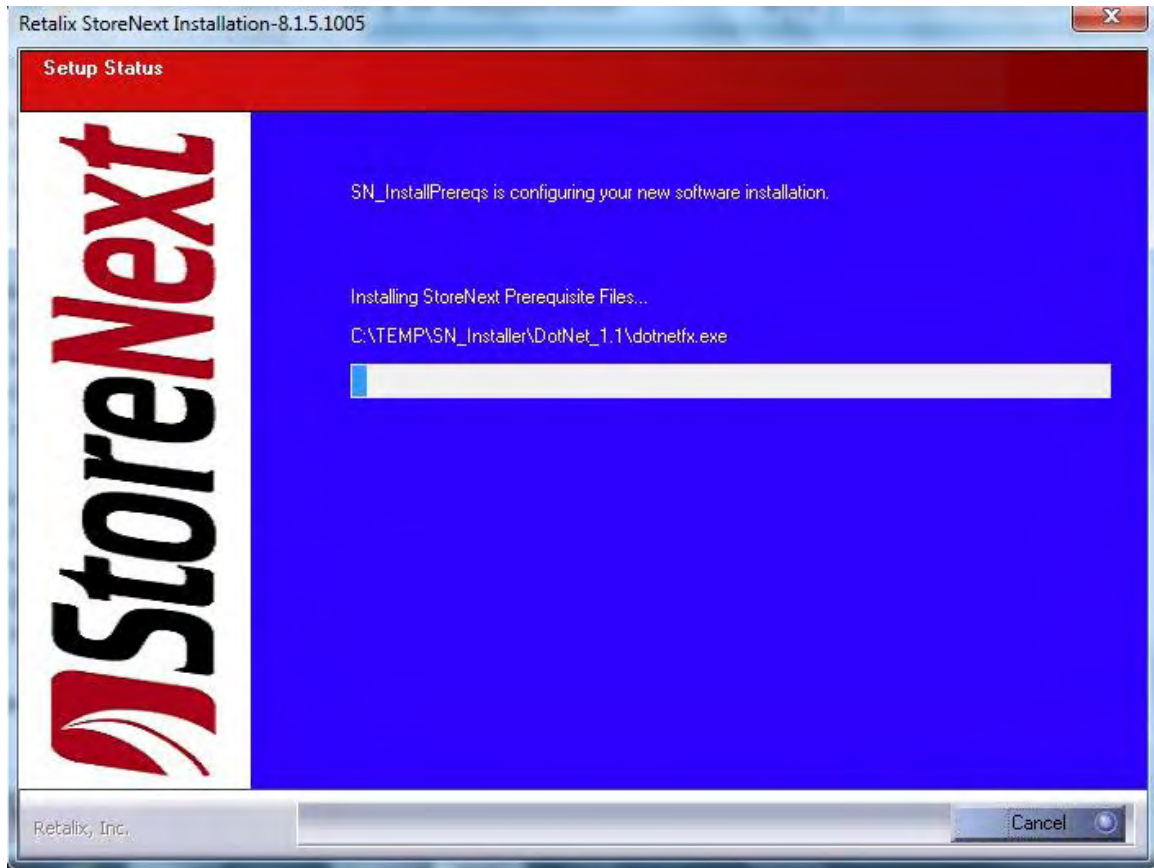
WinPOS Installation

Prior to installing the WinPOS, the StoreNext Prerequisite install must be run.

From the ISS45 software installation CD.



1. Click **Browse** and locate the file **SN_InstallPrereqs.exe** in the CD folder **SN – Prerequisite Installer**
2. Right Click **SN_InstallPrereqs.exe** and select Run as administrator.
3. Prerequisite files are installed.



After the Terminal reboots do the following:

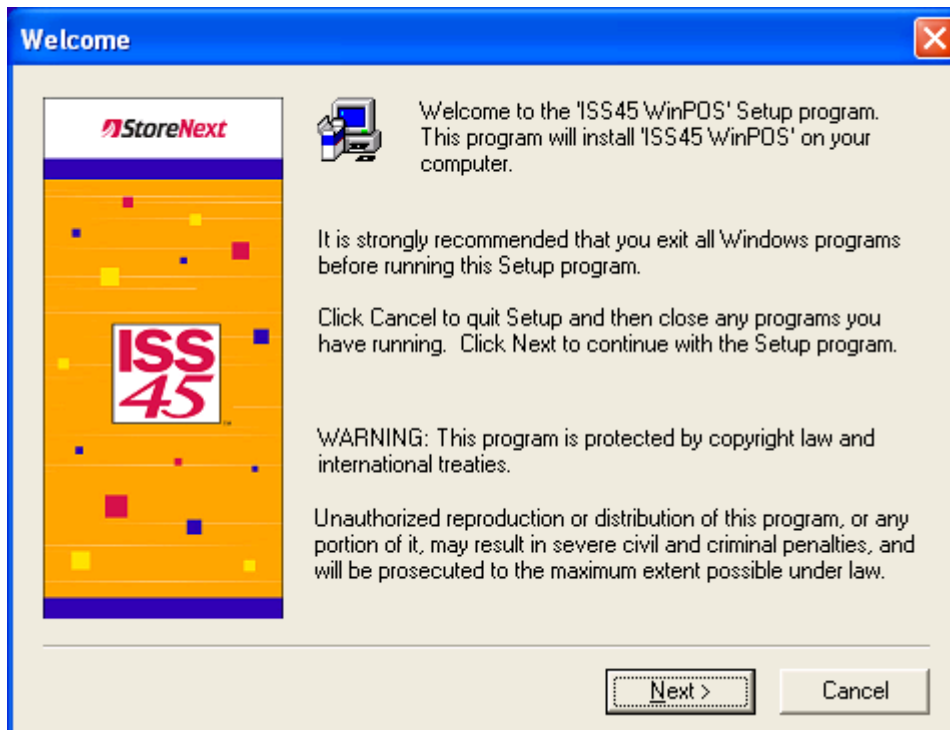
Use the following to start the WinPOS installation from the ISS45 software installation CD.

4. Click **Start** -> **Run**.
5. Click **Browse** and locate the file **Setup.exe** in the CD folder **WinPOS\Disk1** (example D:\WinPOS\Disk1 folder).
6. Right Click on **Setup.exe** and select Run as administrator.

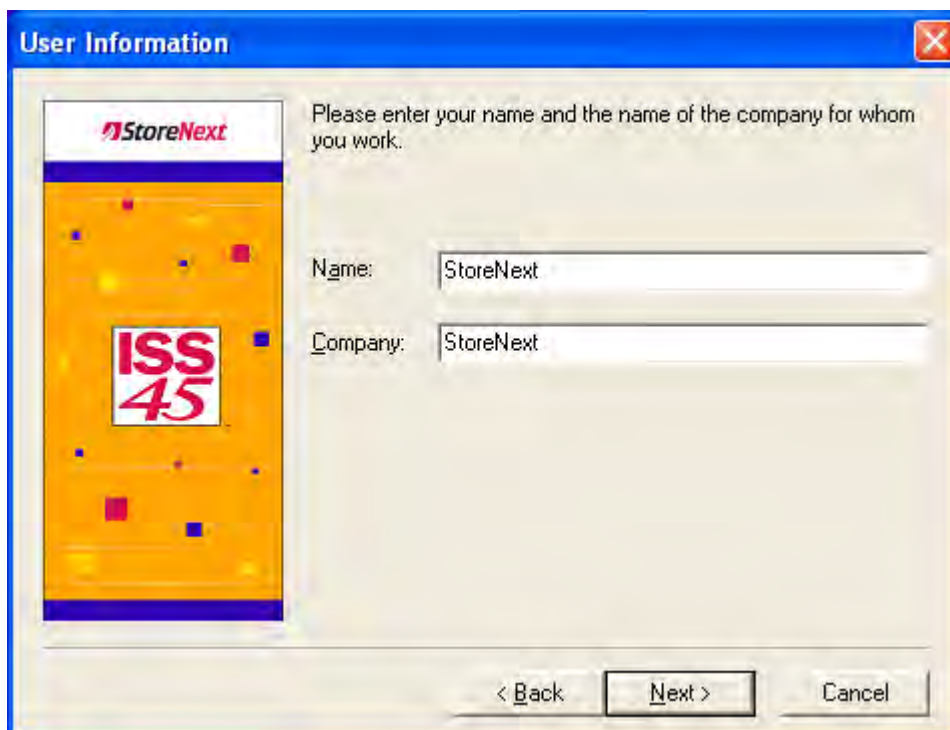
Note:

Ensure that the line indicates **Setup.exe** and **not Setup.bat**.

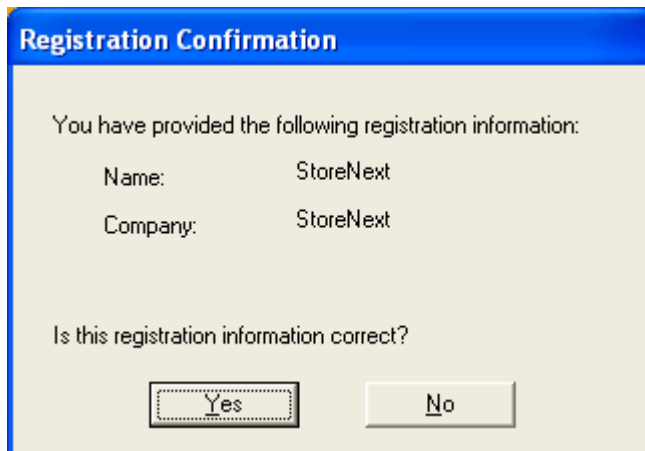
7. Click **OK** to launch the WinPOS installation. The Welcome screen is displayed:



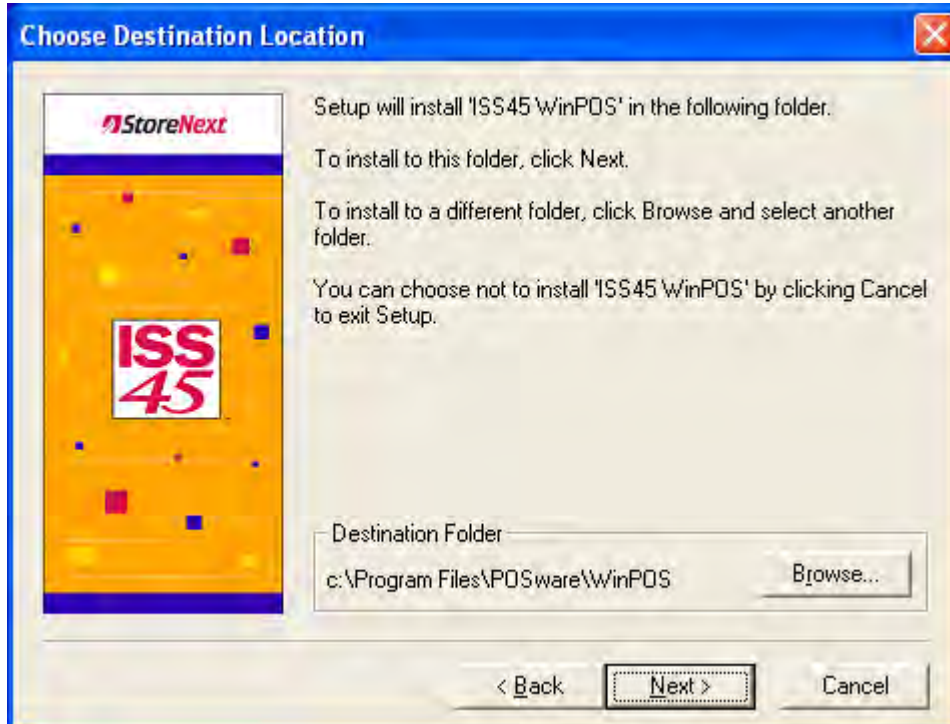
8. Click **Next**. The User Information screen is displayed:



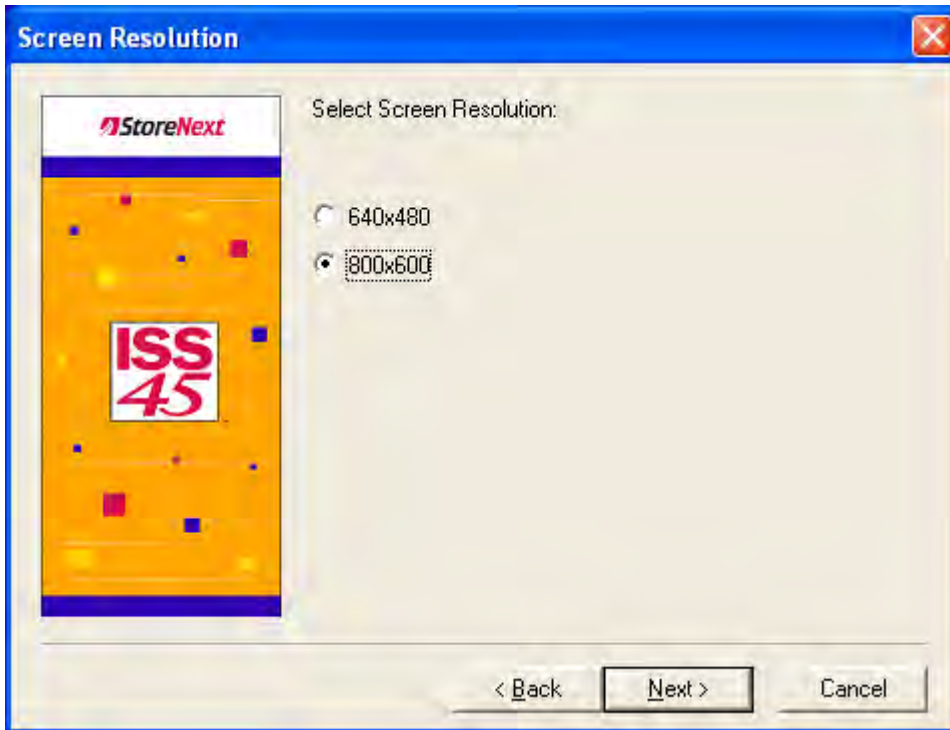
9. Enter name and company information and click **Next**. The Registration Confirmation screen is displayed:



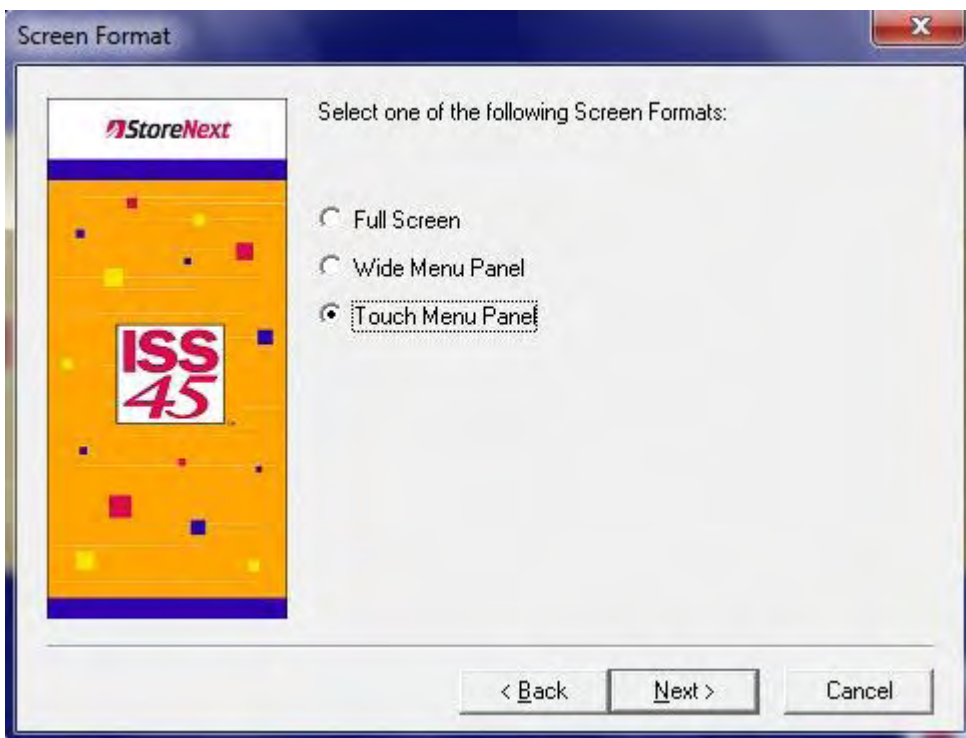
10. Click **Yes** and the Choose Destination Location screen is displayed:



11. Click **Next**. The Screen Resolution screen is displayed:



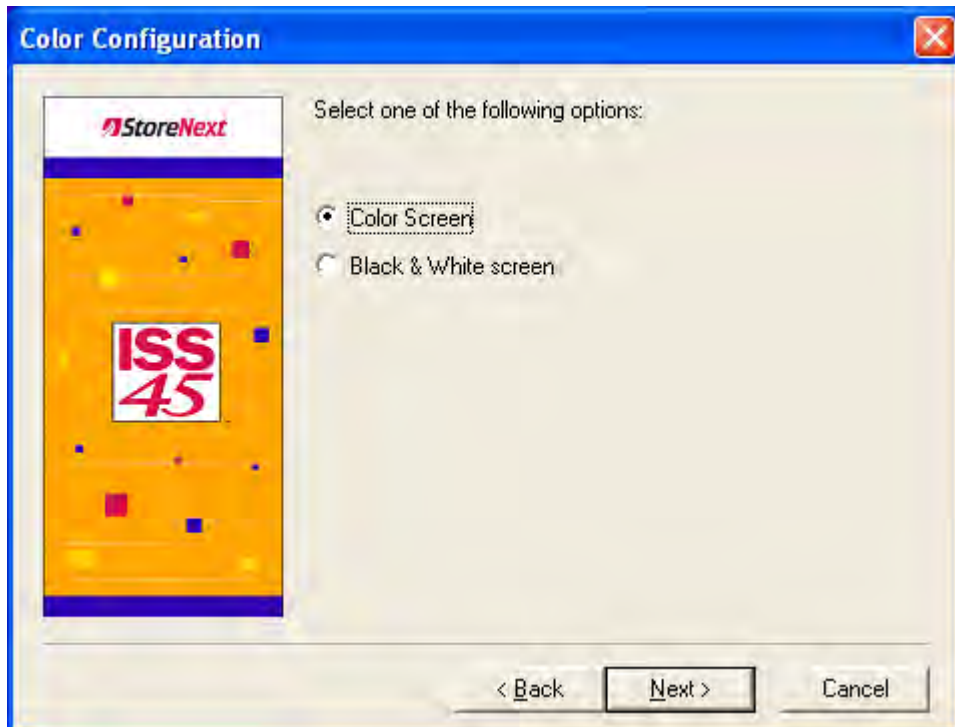
12. Ensure that **800x600** is selected. Click **Next**. The Screen Format screen is displayed:



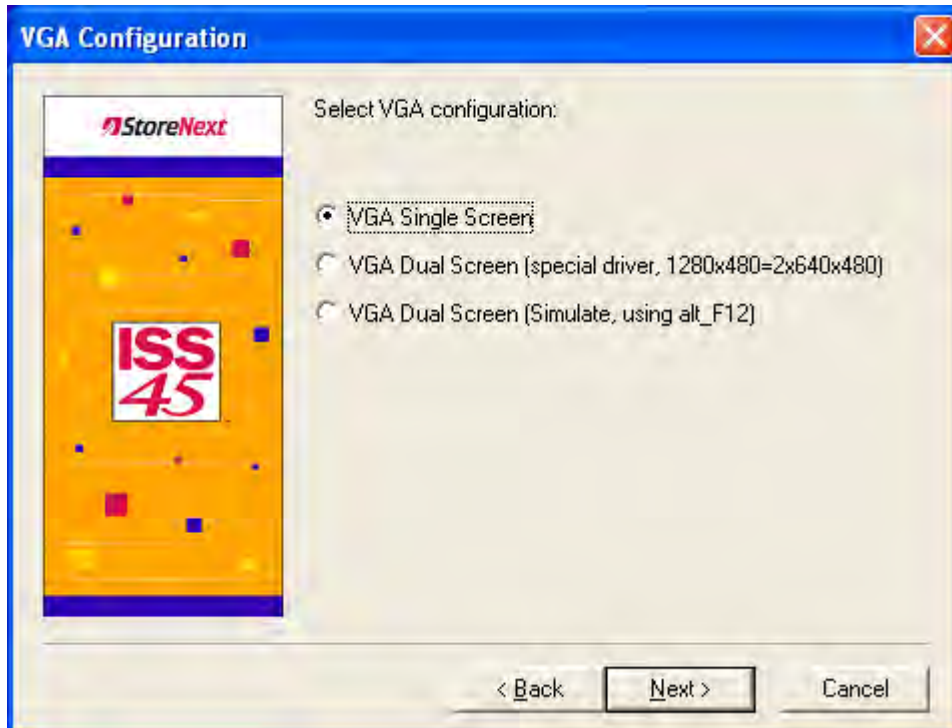
13. Select the configuration for your equipment setup and click **Next**:
Currently only Full Touch is supported on the HP rp5800. The Color Configuration Screen is displayed:

Note:

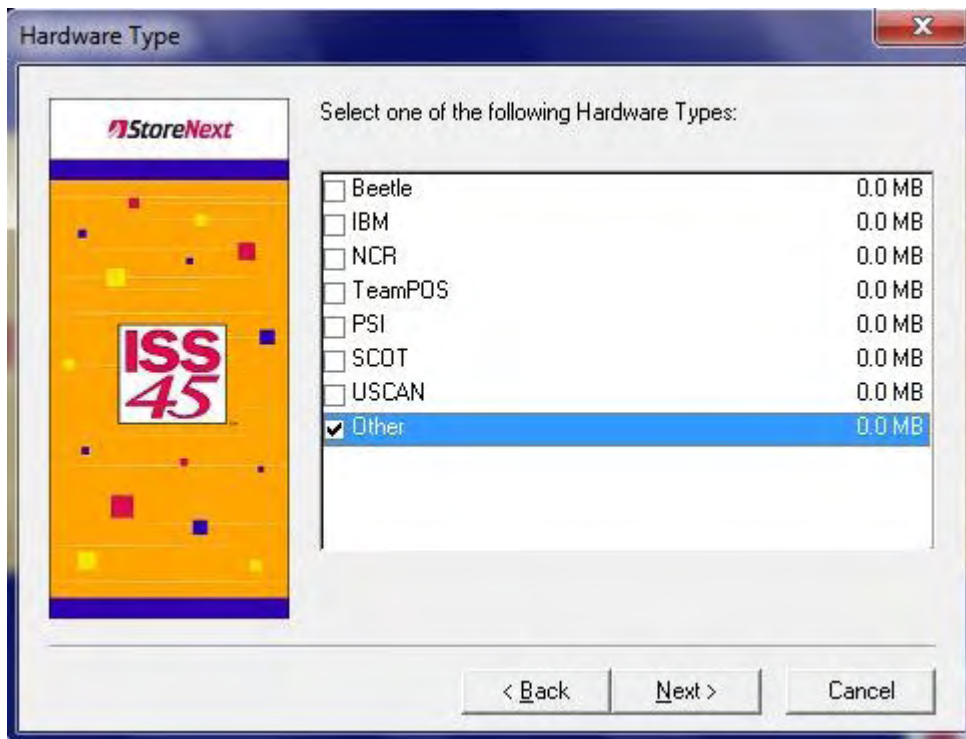
Full Screen does not provide any touch screen capabilities. **Wide Menu Panel** provides limited touch and requires some form of a keyboard. **Touch Menu Panel** provides full touch screen support and does not require any additional keyboards.



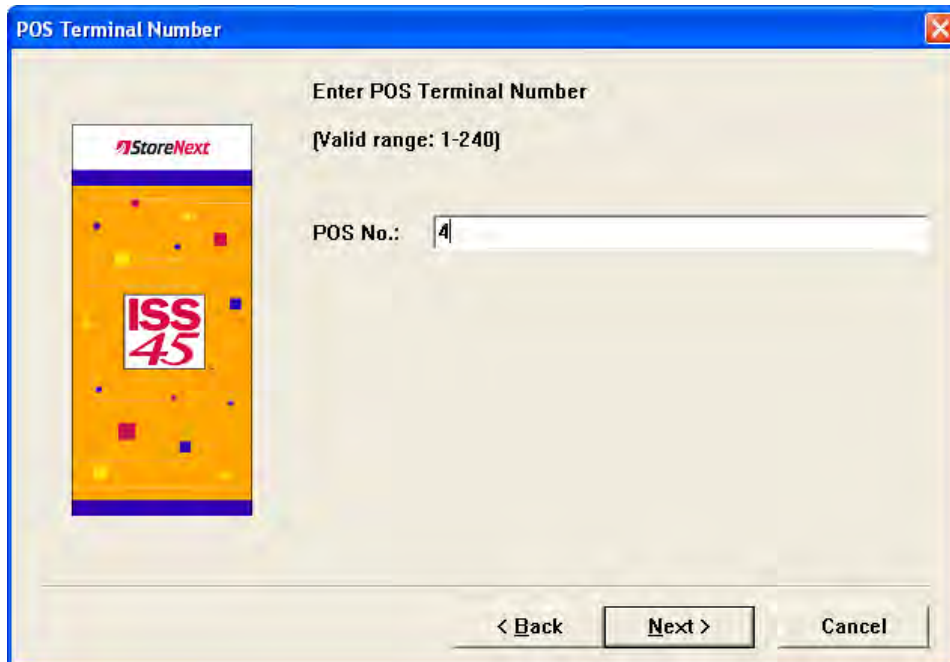
14. Ensure **VGA Color Screen** is selected. Click **Next**. The VGA Configuration screen is displayed:



15. Ensure **VGA Single Screen** is selected for single displays or VGA Dual Screen if using two displays. Click **Next**. The Hardware Type screen is displayed:



16. Ensure that **Other** is selected. Click **Next**. The POS Terminal Number screen is displayed:



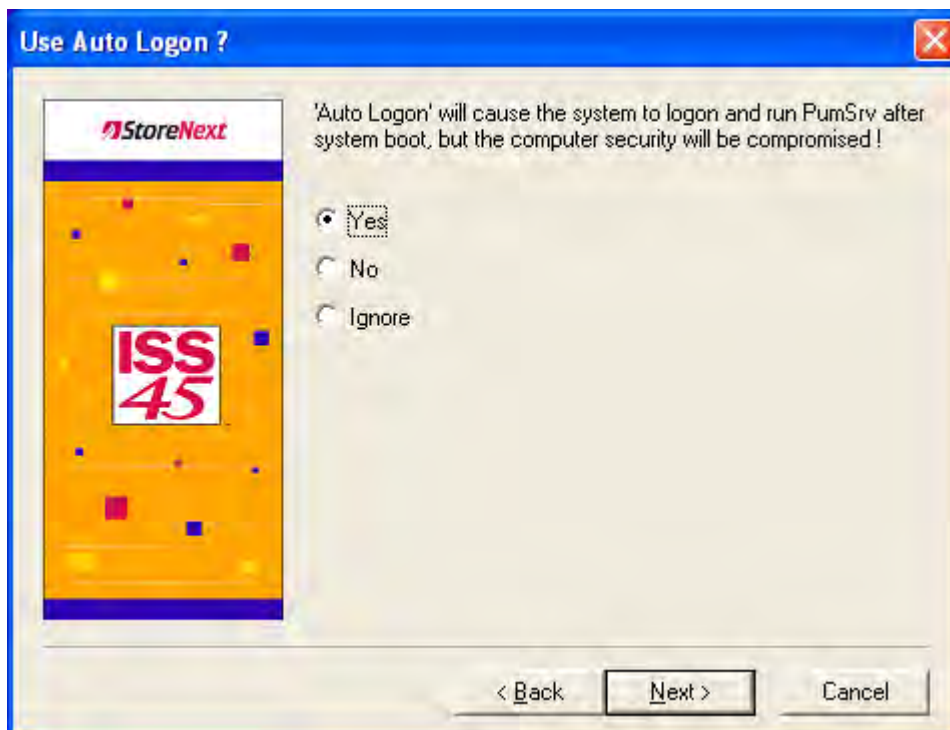
POS Terminal Number

Enter POS Terminal Number
[Valid range: 1-240]

POS No.: 4

< Back Next > Cancel

17. Enter the POS terminal number. Click **Next**. The Use Auto Logon screen is displayed:



Use Auto Logon ?

'Auto Logon' will cause the system to logon and run PumSrv after system boot, but the computer security will be compromised!

Yes
 No
 Ignore

< Back Next > Cancel

18. Ensure **Yes** is selected. Click **Next**. The next Use Auto Logon screen is displayed:

Use Auto Logon

Auto Logon will log on to NT automatically each time the terminal is switched on or rebooted.

User Name Administrator

Password xxxxxxx

Confirm Password xxxxxxx

Enter the 'User Password', must exactly match the value entered above (case sensitive).

< Back Next > Cancel

19. Enter the Administrator User Name. Enter and confirm the password for the Administrator. Click **Next**. The Start Copying Files screen is displayed:

Start Copying Files

Setup has enough information to start copying the program files. If you want to review or change any settings, click Back. If you are satisfied with the settings, click Next to begin copying files.

Current Settings:

User Information:
Name: StoreNext
Company: StoreNext

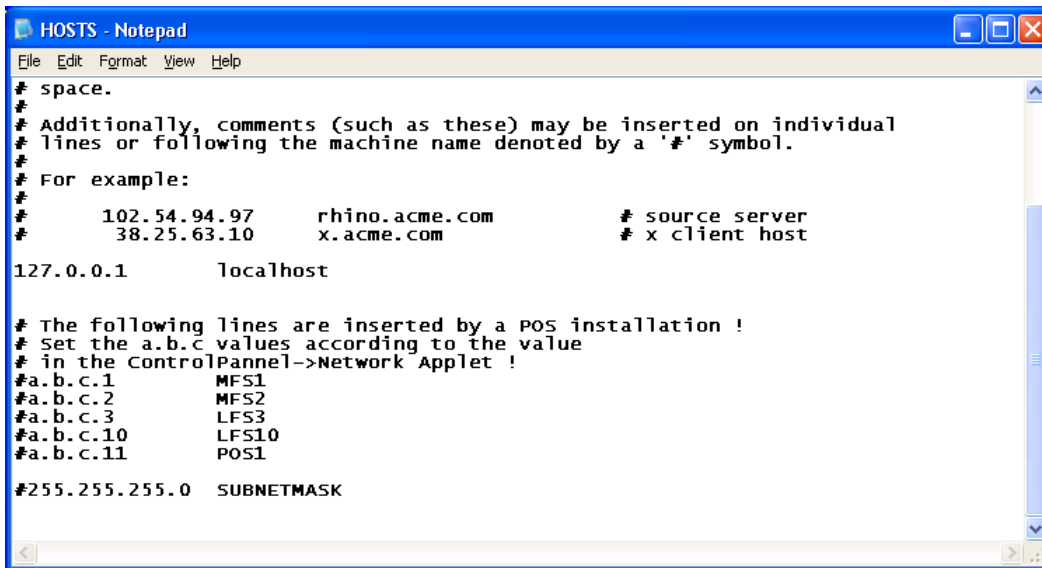
Installation:
New

Target Directory:
c:\Program Files\POSware\WinPOS

WinPOS Installation Configuration:
Screen Resolution: 800x600

< Back Next > Cancel

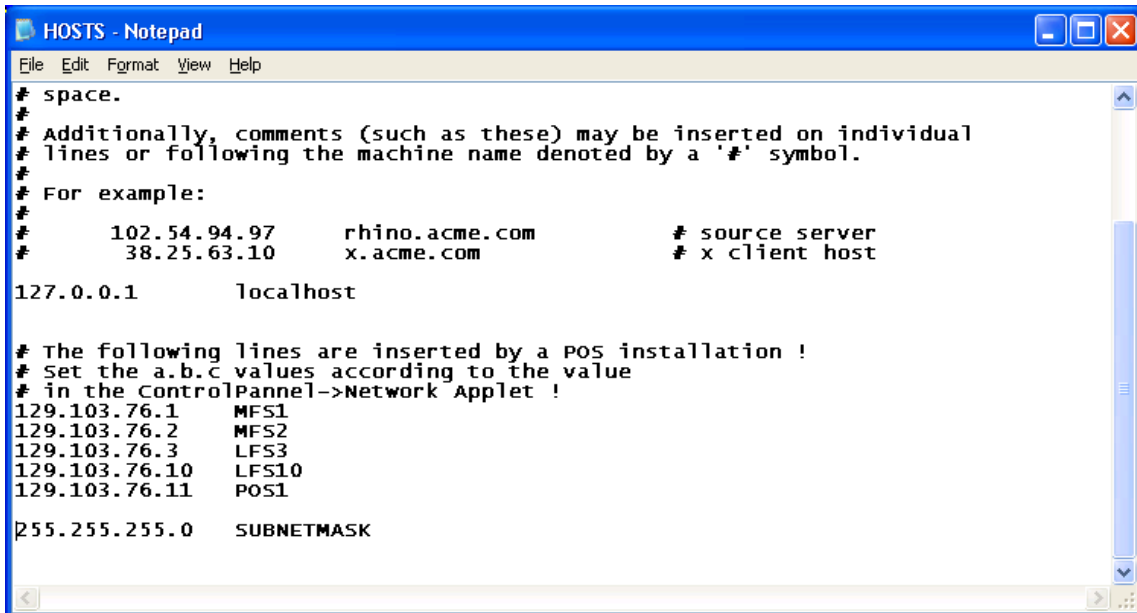
20. Review the information. Click **Next**. The HOSTS – Notepad screen is displayed are files are copied:



```
HOSTS - Notepad
File Edit Format View Help
# space.
#
# Additionally, comments (such as these) may be inserted on individual
# lines or following the machine name denoted by a '#' symbol.
#
# For example:
#
#       102.54.94.97      rhino.acme.com          # source server
#       38.25.63.10     x.acme.com              # x client host
127.0.0.1      localhost

# The following lines are inserted by a POS installation !
# Set the a.b.c values according to the value
# in the ControlPannel->Network Applet !
#a.b.c.1      MFS1
#a.b.c.2      MFS2
#a.b.c.3      LFS3
#a.b.c.10     LFS10
#a.b.c.11     POS1
#255.255.255.0  SUBNETMASK
```

21. Make the necessary changes to the HOSTS file to match your network IP addressing. Remove the # symbol on the items required for your store's environment (see example below):

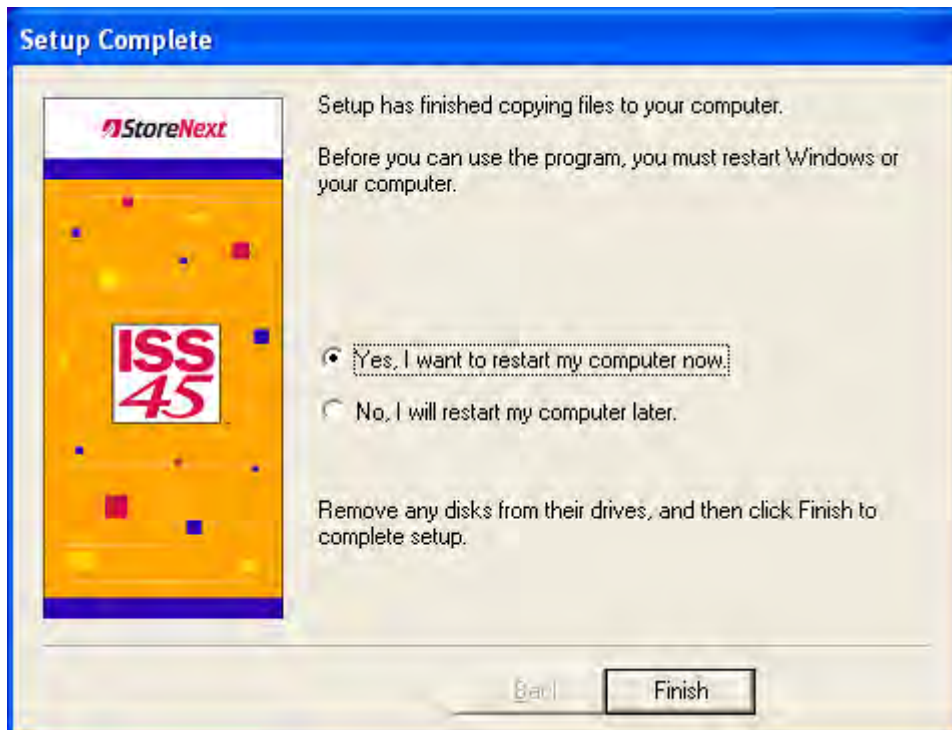


```
HOSTS - Notepad
File Edit Format View Help
# space.
#
# Additionally, comments (such as these) may be inserted on individual
# lines or following the machine name denoted by a '#' symbol.
#
# For example:
#
#       102.54.94.97      rhino.acme.com          # source server
#       38.25.63.10     x.acme.com              # x client host
127.0.0.1      localhost

# The following lines are inserted by a POS installation !
# Set the a.b.c values according to the value
# in the ControlPannel->Network Applet !
129.103.76.1   MFS1
129.103.76.2   MFS2
129.103.76.3   LFS3
129.103.76.10  LFS10
129.103.76.11  POS1
#255.255.255.0  SUBNETMASK
```

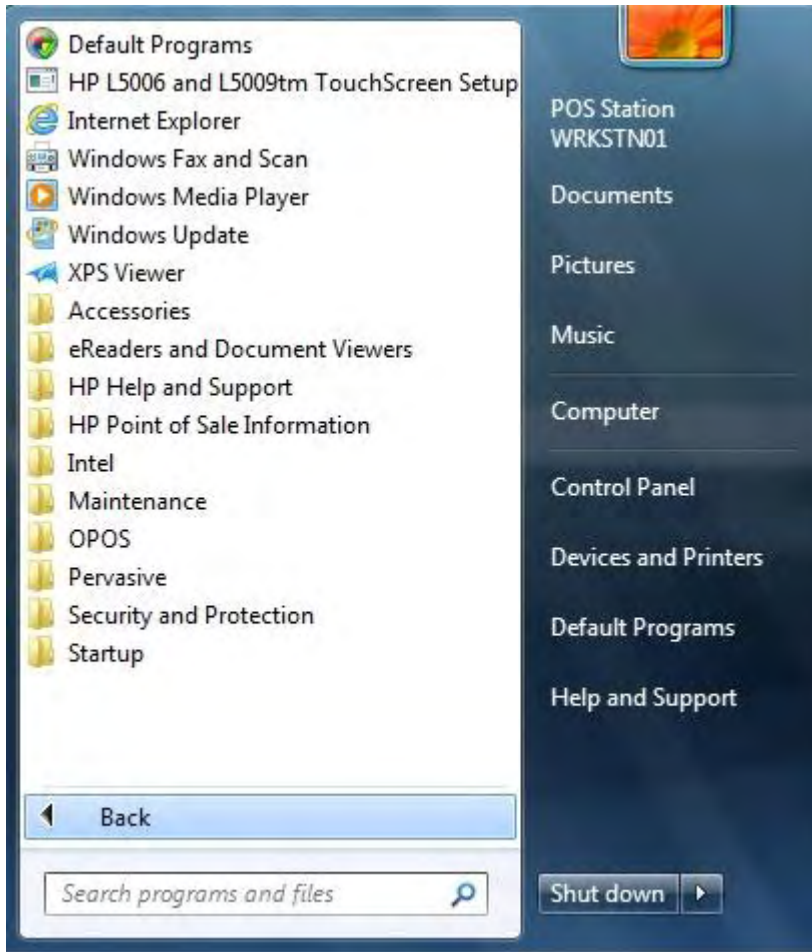
22. Select **File** -> **Exit** after making changes. The following is displayed:

23. Click **Yes**. The installation continues until the Setup Complete screen is displayed:



24. Ensure **Yes** is selected and click **Finish**.
25. The computer will restart and start loading WinPOS.
26. Exit to the Windows Desktop when the ISS45 load has finished for further installation (e.g. Payments, Catalina, applying patches, etc.).

Media Player needs initialized. Go to Start, All Programs.



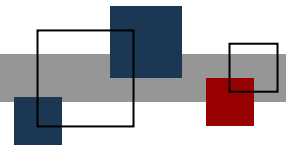
Click on Windows Media Player.



Click Recommended settings.

Click Finish and close Windows Media Player.

THIS CONCLUDES THE POS WORKSTATION INSTALLATION SECTION. REPEAT THE ENTIRE SERIES OF STEPS FOR EACH POS WORKSTATION!!



© StoreNext Retail Technologies LLC 2012

StoreNext Retail Technologies LLC endeavors to ensure that the information in this document is correct and fairly stated but does not accept liability for any error or omission.

The development of StoreNext products and services is continuous and published information may not be up to date. It is important to check the current position with StoreNext. This document is not part of a contract or license save insofar as may be expressly agreed.