






The logo for ISS 45, consisting of the letters 'ISS' in a large, bold, black serif font above the number '45' in a similar font, all enclosed within a thin black rectangular border.

-  *ISS45 Version 7.1.3.0-070*
-  *Release Notes & What's New*
- 
- 
- 

ISS45 V7 Release Notes & What's New

Date of Issue	Product Identification Number	Part Number	Brief Description
November 2007	45001/080	89000408	7.1.2.1-050 Release
April 2008	45001/080	89000444	7.1.3.0-050 Prelim
June 2008	45001/080	89000444B	7.1.3.0-050 Updated
May 2009	45001/080	89000516	7.1.3.0-070

**©Copyright StoreNext Retail Technologies LLC 1995-2009
All rights reserved**

This publication is protected by federal copyright law. No part of this publication may be reproduced or transmitted into any human or computer language in any form or by any means, stored in a retrieval system, transmitted, redistributed, translated or disclosed to third parties, or de-compiled in any way including, but not limited to, photocopy, photograph, electronic, mechanical, magnetic or manual without the express written permission of StoreNext Retail Technologies LLC or its licensors, if any. This document, notwithstanding the above, may be distributed in electronic or printed form to personnel who are employed by either (1) a StoreNext customer of the subject system of this document or (2) personnel from an authorized StoreNext dealer of the subject system of this document. All copies, so distributed and/or so authorized, shall contain a full copy of this copyright notice.

StoreNext Retail Technologies LLC endeavors to ensure that the information in this document is correct and fairly stated but does not accept liability for any error or omission. StoreNext Retail Technologies LLC makes no representation or warranties with respect to the contents hereof, and specifically disclaims any implied warranties of merchantability or fitness for a particular purpose or non-infringement. No commitments by StoreNext or its suppliers are made from this documentation which is provided for information only.

Development of StoreNext products and documentation is continuous: StoreNext Retail Technologies LLC reserves the right to revise this publication and to make changes from time to time in the contents hereof or in the products herein described or discussed without notice and without any obligation of StoreNext Retail Technologies LLC to notify any person or organization of such revision or changes. Information published in this document will likely become obsolete over time and it is recommended that users regularly check for updates and newer versions.

StoreNext Retail Technologies LLC has prepared this manual for use by users, authorized third parties and personnel of StoreNext Retail Technologies LLC as a guide to the proper installation, operation, customization and/or maintenance of StoreNext Retail Technologies LLC equipment and software. The drawings and specifications contained herein are the property of StoreNext Retail Technologies LLC and/or its licensors.

Third-party products, services, or company names referenced in this document may be trademarked or copyrighted by their respective owners, and are for identification purposes only.

Copyrights, trademarks and license agreements shall be governed and construed in accordance with the laws of the State of Texas and the Federal Arbitration Act, and shall benefit Retailix, its successors, and assigns.

Address comments and corrections to:

StoreNext Retail Technologies LLC
Software Program Director
6100 Tennyson Parkway
Suite 130
Plano, Texas 75024

Table of Contents

Table of Contents	i
Introduction	3
POS Enhancements	4
11425 – WIC CVV Support (Phase 1).....	4

Introduction

A new feature was recently made recently to the StoreNext ISS45 system. This change is reflected in the accompanying ISS45 7.1.3.0-070 software. The Change Request Document (CRD) number assigned to the enhancement is listed in the description heading.

This enhancement is explained in detail in the following pages and is not included in the latest Office Users Guide, WinPOS User Guide or Office Administrator's Reference. If you have any questions regarding this release, please contact StoreNext Support.

POS Enhancements

11425 – WIC CVV Support (Phase 1)

New in this ISS45 release is support for paper WIC CVVs (Cash Value Vouchers) in response to the USDA initiative to increase its participants' choices by offering fresh and processed fruits and vegetables. While traditional WIC checks are item-based, dollar-based WIC CVVs facilitate the purchase of fruits and vegetables since few fresh fruits and vegetables are sold in standard weight units (with uniform bar codes) and their prices may vary considerably (between seasons, regions and stores).

Phase 1 of this implementation involves a new "WIC CVV Sale Mode" where:

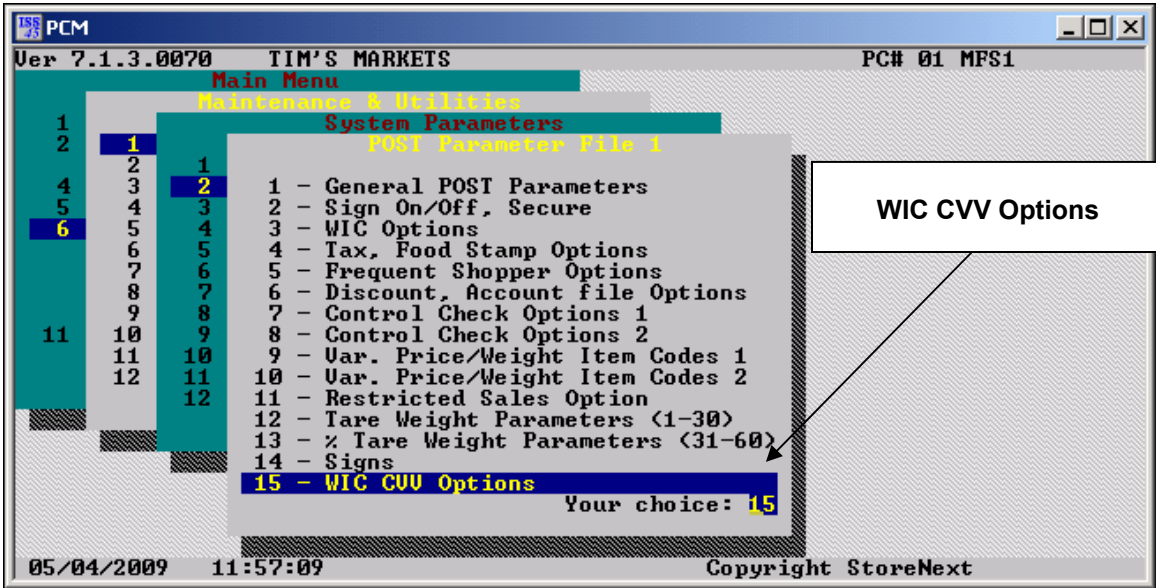
- Voucher amounts, issue and expiration dates are entered at the beginning of a transaction.
- WIC CVV flagged fruits and vegetable items (or WIC CVV flagged department sales) are entered into the ticket.
- The transaction is tendered with the vouchers declared at the beginning of the transaction.
- Tendered vouchers are endorsed.

Note:

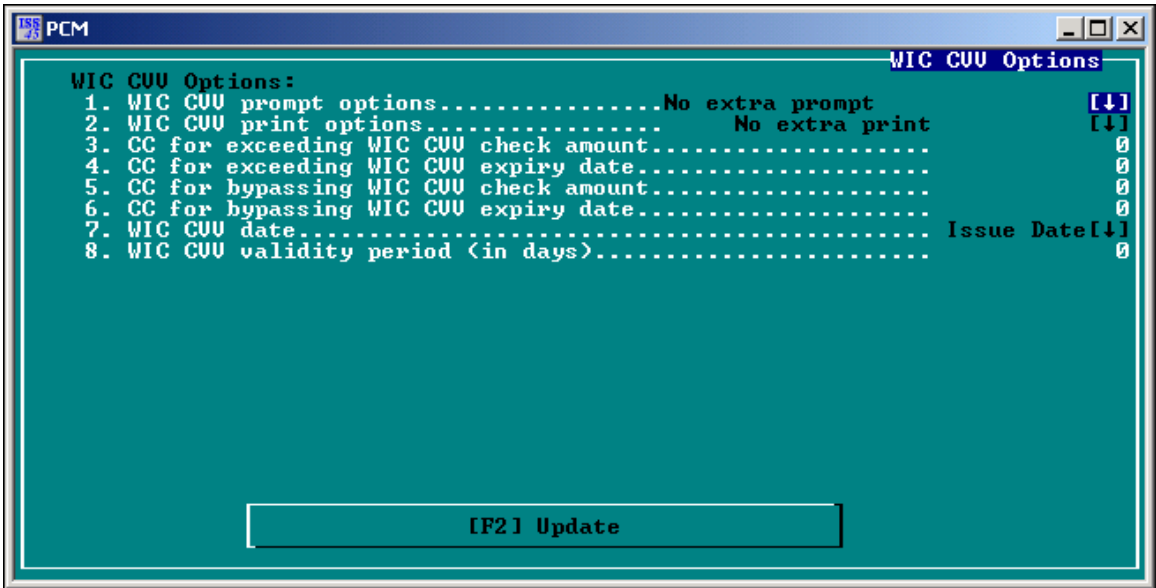
Support for mixed baskets (i.e. tickets that include both non-WIC CVV and WIC CVV items) and-split-tendering (accepting additional tenders in addition to WIC CVV in the same ticket) will be part of Phase 2 of the WIC CVV implementation.

New POST Parameter for WIC CVV Options

To support WIC CVV, a new **WIC CVV Options** POST Parameter File menu option (15) has been established.



When selected (6-1-2-15), the **WIC CVV Options** screen displays with the following new parameters (explained below):



Parameter	Explanation
WIC CVV Prompt Options	<p>This field determines whether the system prompts for WIC CVV amount and expiration date. Select one of the following:</p> <ul style="list-style-type: none"> • No extra prompt • Prompt for Amount • Prompt for Expiration Date • Prompt for Amount and Expiration Date <p>Note: This must be set for “Prompt for Amount and Expiration Date” for Phase 1 of WIC CVV implementation.</p>
WIC CVV Print Options	<p>This field determines whether the WIC CVV amount and expiration date prints on the receipt. Select one of the following:</p> <ul style="list-style-type: none"> • No extra print • Print Amount • Print Expiration Date • Print Amount and Expiration Date
CC for Exceeding WIC CVV Check Amount	<p>Specify the control check to be triggered if the ticket subtotal is greater than the total amount of the declared WIC CVV vouchers.</p> <p>Note: This must be set to a Control Check action to “Inhibit Activity”.</p>
CC for Exceeding WIC CVV Expiry Date	<p>Specify the control check to be triggered if the WIC CVV date has expired.</p>

Parameter	Explanation
CC for Bypassing WIC Check Amount	Specify the control check to be triggered if no WIC CVV amount is entered.
CC for Bypassing WIC CVV Expiry Date	Specify the control check to be triggered if no WIC CVV expiration date is entered.
WIC CVV Date	<p>Select if you want the system to check the WIC CVV issue date, expiration date or both issue and expiration date.</p> <p>Note: This must be set for “Both” for Phase 1 of WIC CVV implementation.</p>
WIC CVV Validity Period (in Days)	<p>Use this parameter together with the WIC CVV Date, above. Enter the number of days for which the voucher is valid, taken from the voucher’s date of issue.</p> <p>If the validity period is exceeded, the POS terminal triggers the control check for exceeding WIC CVV expiry date.</p>

New Item Maintenance Field

Fruits and vegetables that may be purchased using WIC CVV must be flagged accordingly using the new **Pmt by WIC CVV** flag on PLU Maintenance screen.

The screenshot shows the PCM (Product Maintenance) screen for item 86, BANANAS. The screen is divided into two columns. The left column contains item details such as UPC code, description, department, quantity, price, and various flags. The right column contains a list of flags with checkboxes. A callout box labeled "Pmt by WIC CVV flag" points to the "Pmt by WIC CVU" flag in the right column. The bottom of the screen features a navigation bar with buttons for [F2] Update, [F4] Link, [F5] Clr, [F6] Sales, [F8] List, [F9] Prev, and [F10] Next.

Field	Value	Field	Value
Item UPC code	86	DEA GUpdate Mode	0
Item description	BANANAS	Sale prohibited	[]
POST item description	BANANAS	Non-merchandise sale	[]
Department number	6 MEAT	Negative entry	[]
Quantity/Price	1 / 3.00	Manual price	[]
Frequent Shopper:		Inhibit qty/repeat	[]
Type / Uvalue	None	Force quantity	[]
Item limit / group	0 / 0	Weighted item	[]
F/S Qty/Bonus points	0	Pmt by F.Stamp	[]
Tax flags		Pmt by WIC	[]
Return code		Pmt by WIC CVU	[]
Tare weight		Discount prohibited	[]
Subdepartment number		Vendor coupon	[]
Family number	0	Store coupon	[]
Second family number	0	Decimal quantity	[]
Mix & Match code	0	Cost Plus Item	[]
Cost per case	.00	Promotion	[]
Unit per case	1	Item on Sale	[]
Discount	0		
POST item message	0		
Restriction layout	0		

Note:

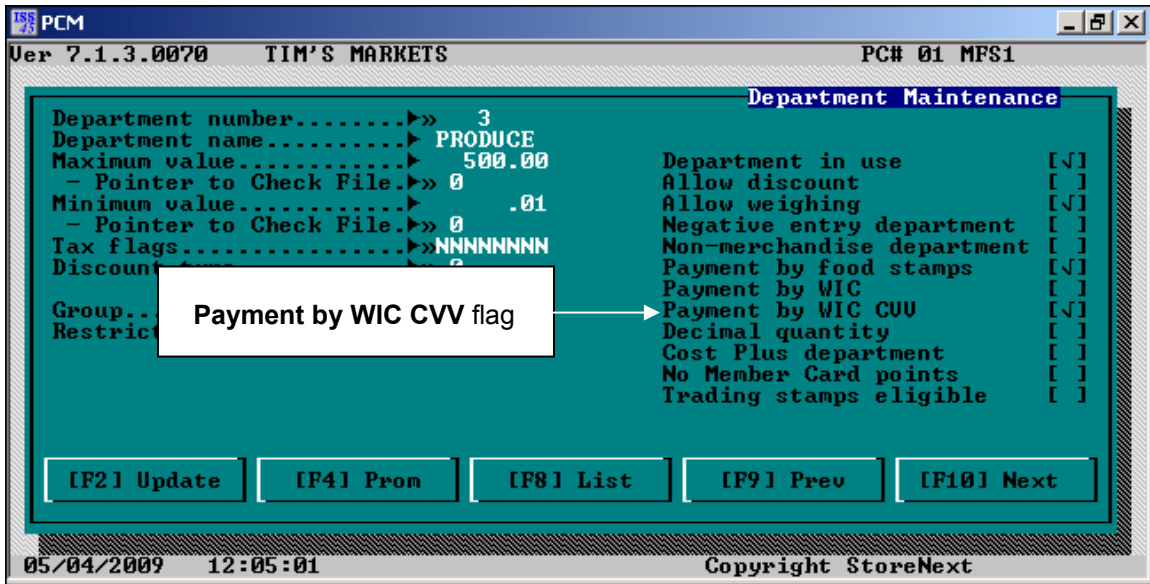
An item should **not** be flagged for both **Pmt by WIC** and **Pmt by WIC CVV**. In Phase 2 of WIC CVV Implementation, these flags will be mutually exclusive in PLU Maintenance.

Note:

All items flagged for **Pmt by WIC CVV** should also be flagged for **Pmt by F.Stamp**. In Phase 2 of WIC CVV Implementation, if an item's **Pmt by WIC CVV** is checked, its **Pmt by F.Stamp** flag will automatically be set.

New Department Maintenance Field

For supporting department sale transactions using departments that carry qualifying fruits and vegetables, a new **Payment by WIC CVV** flag has been added to the Department Maintenance screen.

**Note:**

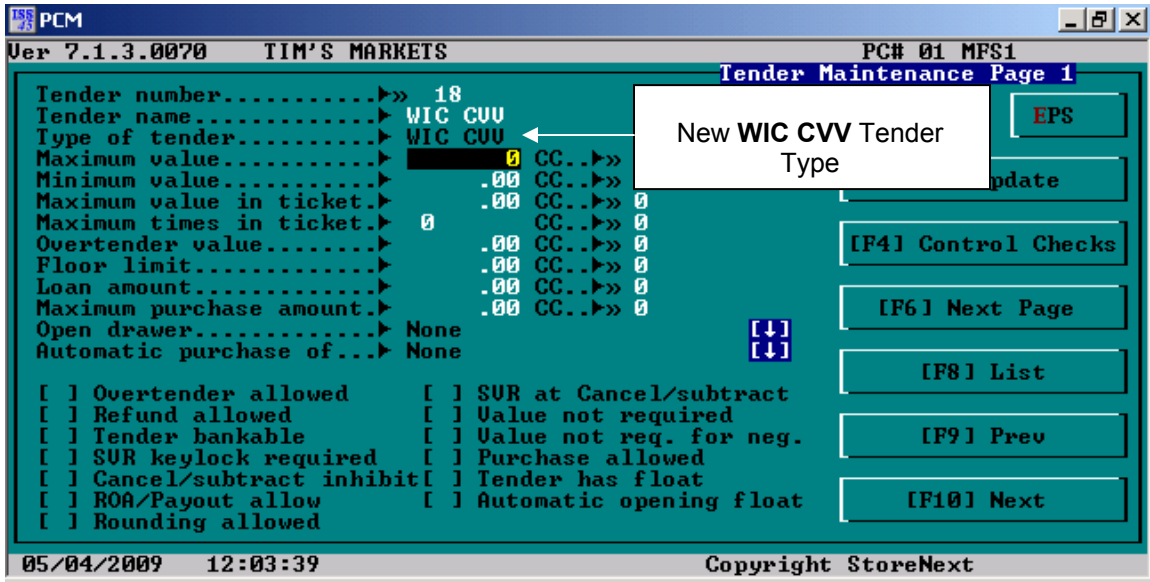
A department should **not** be flagged for both **Payment by WIC** and **Payment by WIC CVV**. In Phase 2 of WIC CVV Implementation, these flags will be mutually exclusive in Department Maintenance.

Note:

All departments flagged for **Payment by WIC CVV** should also be flagged for **Payment by food stamps**. In Phase 2 of WIC CVV Implementation, if a department's **Payment by WIC CVV** is checked, its **Payment by food stamps** flag will automatically be set.

New Tender Maintenance Setting

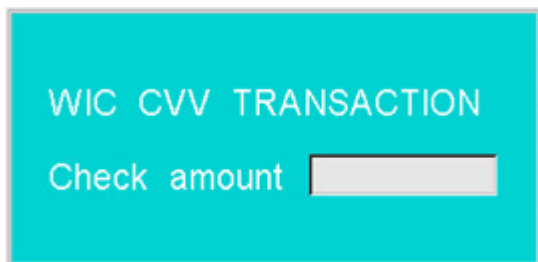
To support the new WIC CVV Sale Mode, a Tender Type of **WIC CVV** has been added to the **Type of tender** selections. (The tender designated as the WIC CVV tender must be added to a preset Tender Key on the POS Menu.)



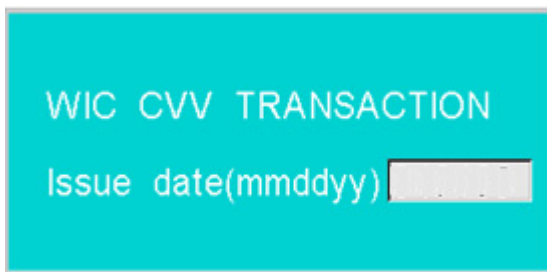
WIC CVV Sale Mode

The POS supports WIC CVV transactions using the following steps:

- 1 The cashier presses the WIC CVV Preset Tender key. The cashier is prompted for the voucher amount:

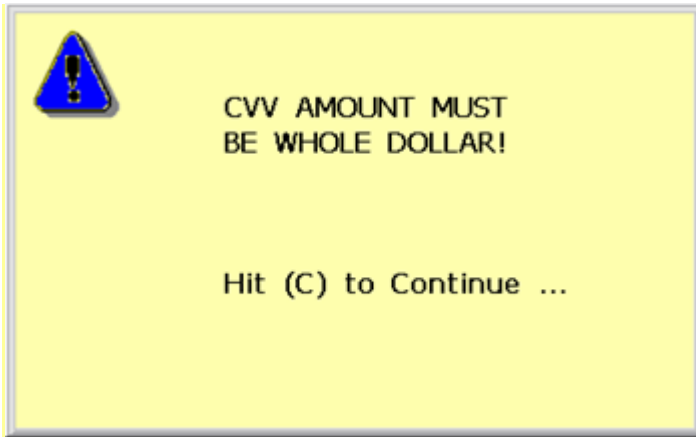


- 2 The cashier keys in the voucher amount (with assumed two place decimal) and presses **Enter**. The cashier is prompted for the voucher Issue Date:



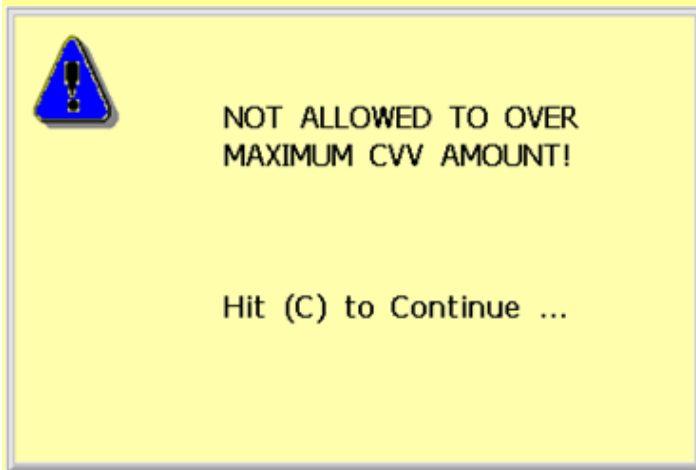
Note:

If the cashier enters a non-whole dollar value (or 0.00), the following warning message displays:



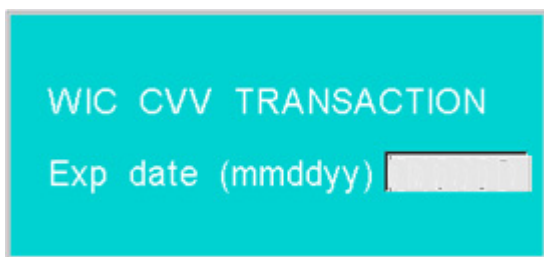
The cashier must press the Clear key and re-enter the correct amount.

Likewise, if the cashier enters a dollar amount greater than the Maximum Amount configured in Tender Maintenance for the designated WIC CVV tender, the POS will issue the following warning message:

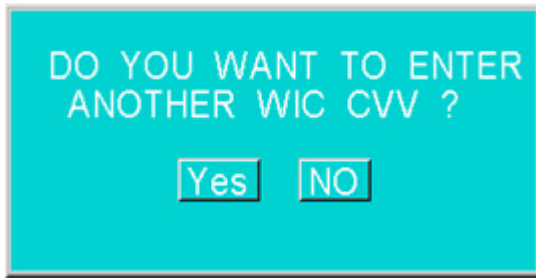


The cashier must press the Clear key and re-enter the correct amount.

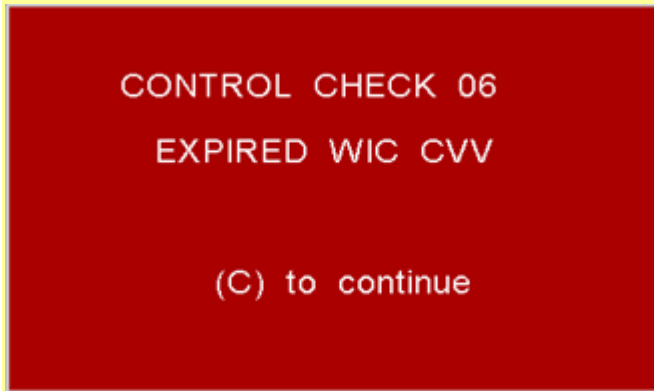
- 3 The cashier keys in the Issue Date (using the standard "mmddy" format) and presses **Enter**. The cashier is prompted for the Expiration Date.



- 4 The cashier keys in the Expiration Date and presses **Enter**. The following prompt displays.

**Note:**

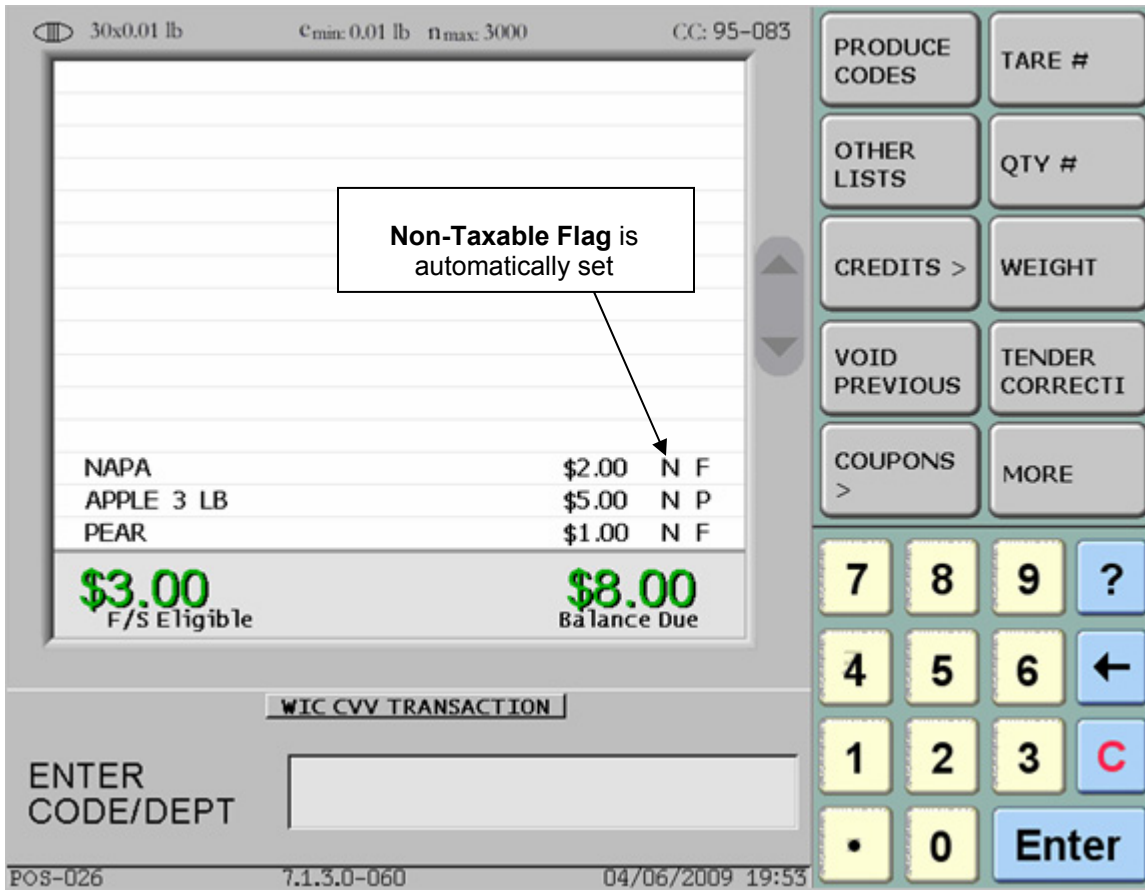
The POS validates both the WIC CVV Issue Date and Expiration Date. If the voucher is expired, the POS will issue the Control Check designated by the new "CC for Exceeding WIC CVV Expiry Date" parameter. For example:



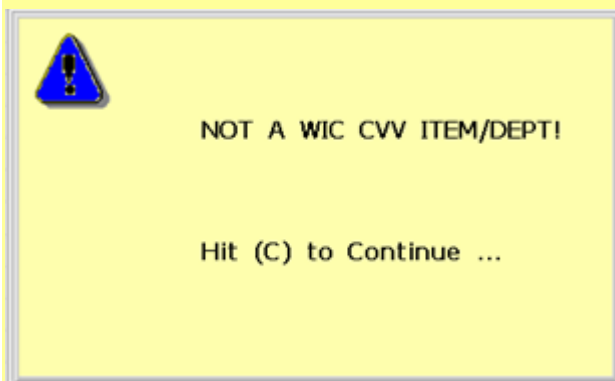
- 5 If "Yes" is selected, repeat steps 2 through 4 for the next voucher. If "No" is selected, the POS is placed in WIC CVV Sale Mode (as indicated by the new indicator on the Cashier Display).



- 6 The cashier enters WIC CVV designated items into the transaction (or optionally rings a department sale to a WIC CVV designated department). The POS will automatically flag the items as “non-taxable”.

**Note:**

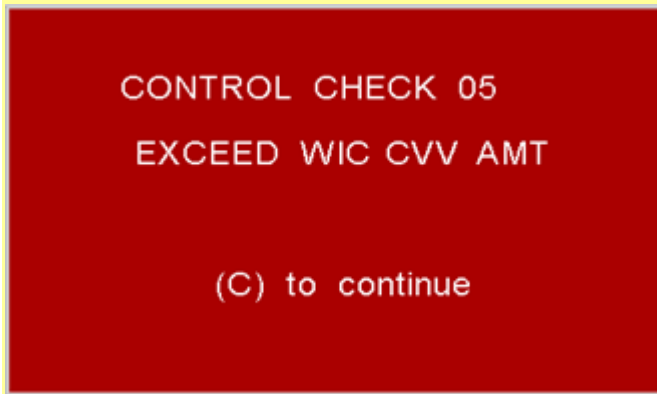
If an attempt is made to enter a non-WIC Item (or Department) to the transaction, the following warning message displays (and the item is prevented from being added to the transaction):



The cashier must press the Clear key to return to Sale Mode.

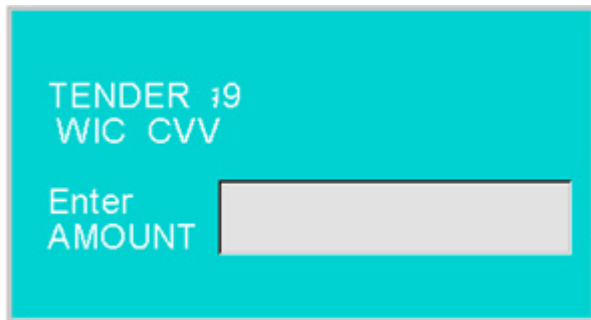
Note:

If at any time during the transaction adding an item to the ticket causes the ticket sub-total to exceed the total amount of vouchers declared at the beginning of the transaction, the POS will issue the Control Check set by the new "CC for Exceeding WIC CVV Check Amount" parameter (and the item will not be added to the transaction). For example:

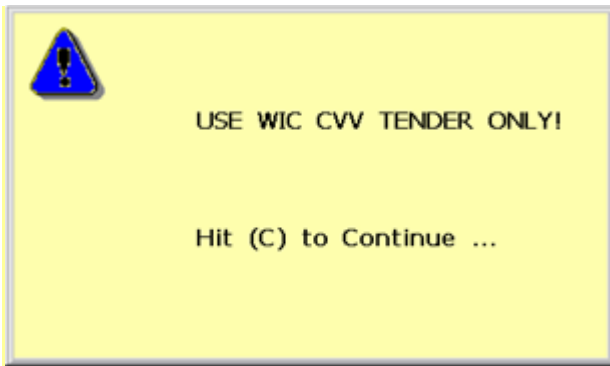


The cashier must press the Clear key and return to the POS to tender the transaction (or perform a line item void of a customer-selected item in the ticket) so the previous item can be added to the transaction.

- 7 The cashier totals the transaction and selects the WIC CVV tender to tender the transaction. The POS prompts the cashier to enter one of the declared voucher amounts (from step 2) for tendering and endorsement.

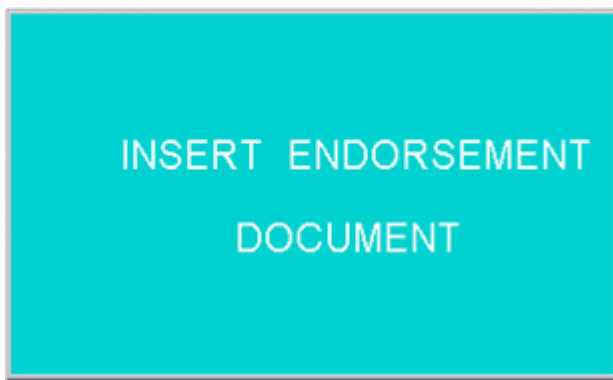
**Note:**

If a non-WIC CVV designated tender is selected, the following warning message displays:



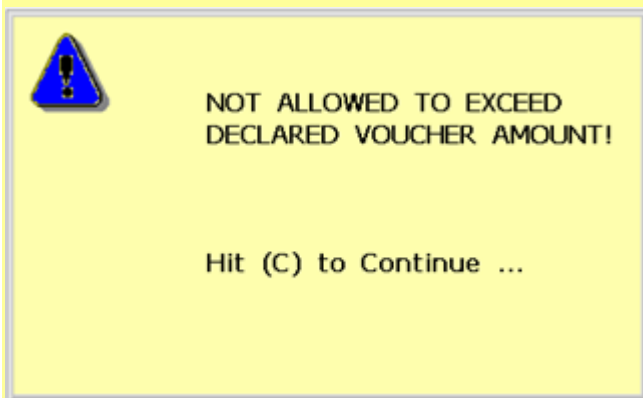
The cashier must press the Clear key to return to Tender Mode to select the correct tender.

- 8 The cashier keys in the voucher amount (with assumed two place decimal) and presses **Enter**. The cashier is prompted to insert the voucher for endorsement.



Note:

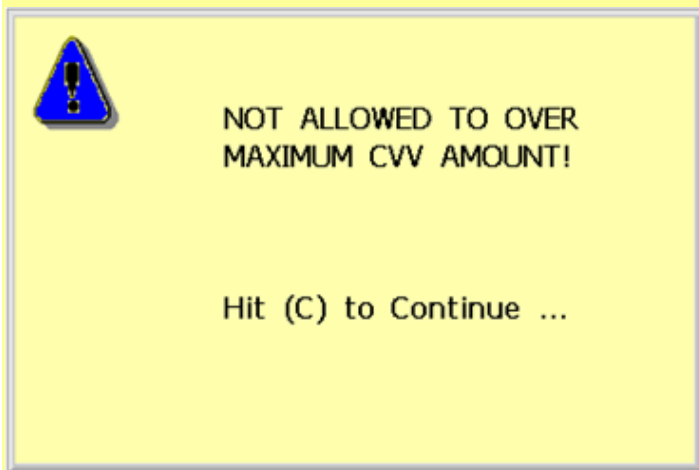
At tender level, the POS will also check to see if the tendered WIC CVV amounts are greater than those declared at the beginning of WIC CVV transaction. For example, assume there were three declared vouchers at the beginning of the ticket (\$8.00, \$6.00 and \$4.00). If first voucher is entered and endorsed for \$8.00 and a second voucher amount is entered for \$8.00, the following warning message displays since \$8.00 is greater than the next largest, declared voucher amount (of \$6.00).



The cashier must press the Clear key and re-enter the correct amount.

Note:

If the cashier enters a WIC CVV tender amount greater than the Maximum Amount configured in Tender Maintenance for the designated WIC CVV tender, the POS will issue the following warning message:



The cashier must press the Clear key and re-enter the correct amount.

- 9 The cashier inserts the voucher for endorsement.
- 10 Repeat steps 7 and 8 until the transaction is fully tendered.

Note:

A voucher will never be endorsed for over its face amount and no change is dispersed in a WIC CVV transaction. No warning message will be issued to the customer that benefits will be lost. If a voucher of \$6.00 is tendered in ticket which has a remaining balance of \$2.50, the voucher will be endorsed for \$2.50.

Note:

It is the retailer's responsibility to set up the endorsement template for WIC transactions (and link it to the WIC CVV tender in Tender Maintenance).

Note:

If a WIC CVV transaction is cancelled or post voided or if WIC CVV items are voided after WIC CVV vouchers have been endorsed, it will be the customer's responsibility to submit them to the agency responsible for re-issuance.

WIC CVV Receipt Printing

Voucher information from tendered WIC CVVs may appear on the customer receipt, depending on the new "WIC CVV Print Options" parameter setting.

If the parameter is set to "No extra print", the top of the receipt will appear as follows:

```
STORENEXT ISS45 V7
WELCOME RETALIX USA
937-384-2277

WIC CVV TRANSACTION
Total CVV: 22.00
```

If the parameter is set to “Print Amount”, the top of the receipt will print as follows:

```
STORENEXT ISS45 V7
WELCOME RETALIX USA
937-384-2277

WIC CVV TRANSACTION
Total CVV: 22.00
CVV(1) Amt: 8.00
CVV(2) Amt: 8.00
CVV(3) Amt: 8.00
```

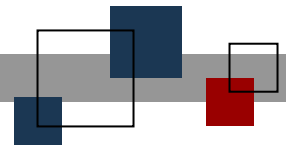
If the parameter is set to “Print Amount and Expiration Date”, the top of the receipt will appear as follows:

```
STORENEXT ISS45 V7
WELCOME RETALIX USA
937-384-2277

WIC CVV TRANSACTION
Total CVV: 23.00
CVV(1) Amt: 6.00
Issue Date: 04/01/2009
Exp. Date: 05/01/2009
CVV(2) Amt: 8.00
Issue Date: 03/22/2009
Exp. Date: 04/22/2009
CVV(3) Amt: 9.00
Issue Date: 04/02/2009
Exp. Date: 05/02/2009
```

Batch File Modifications

The WIC CVV Item flag has been added to the 256-byte and 400-byte PLU Batch Layouts as well as the Department General Batch Layout. (Contact StoreNext Support for more information).



© StoreNext Retail Technologies LLC 2009

StoreNext Retail Technologies LLC endeavors to ensure that the information in this document is correct and fairly stated but does not accept liability for any error or omission.

The development of StoreNext products and services is continuous and published information may not be up to date. It is important to check the current position with StoreNext. This document is not part of a contract or license save insofar as may be expressly agreed.