








ISS 45

-  *ISS45 Version 7.1.3.0-090*
-  *Release Notes & What's New*
- 
- 
- 

ISS45 V7 Release Notes & What's New

| Date of Issue | Product Identification Number | Part Number | Brief Description |
|----------------------|--------------------------------------|--------------------|--------------------------|
| November 2007 | 45001/080 | 89000408 | 7.1.2.1-050 Release |
| April 2008 | 45001/080 | 89000444 | 7.1.3.0-050 Prelim |
| June 2008 | 45001/080 | 89000444B | 7.1.3.0-050 Updated |
| May 2009 | 45001/080 | 89000516 | 7.1.3.0-070 |
| September 2009 | 45001/080 | 89000533 | 7.1.3.0-090 |

**© Copyright StoreNext Retail Technologies LLC 1995-2009
All rights reserved**

This publication is protected by federal copyright law. No part of this publication may be reproduced or transmitted into any human or computer language in any form or by any means, stored in a retrieval system, transmitted, redistributed, translated or disclosed to third parties, or de-compiled in any way including, but not limited to, photocopy, photograph, electronic, mechanical, magnetic or manual without the express written permission of StoreNext Retail Technologies LLC or its licensors, if any. This document, notwithstanding the above, may be distributed in electronic or printed form to personnel who are employed by either (1) a StoreNext customer of the subject system of this document or (2) personnel from an authorized StoreNext dealer of the subject system of this document. All copies, so distributed and/or so authorized, shall contain a full copy of this copyright notice.

StoreNext Retail Technologies LLC endeavors to ensure that the information in this document is correct and fairly stated but does not accept liability for any error or omission. StoreNext Retail Technologies LLC makes no representation or warranties with respect to the contents hereof, and specifically disclaims any implied warranties of merchantability or fitness for a particular purpose or non-infringement. No commitments by StoreNext or its suppliers are made from this documentation which is provided for information only.

Development of StoreNext products and documentation is continuous: StoreNext Retail Technologies LLC reserves the right to revise this publication and to make changes from time to time in the contents hereof or in the products herein described or discussed without notice and without any obligation of StoreNext Retail Technologies LLC to notify any person or organization of such revision or changes. Information published in this document will likely become obsolete over time and it is recommended that users regularly check for updates and newer versions.

StoreNext Retail Technologies LLC has prepared this manual for use by users, authorized third parties and personnel of StoreNext Retail Technologies LLC as a guide to the proper installation, operation, customization and/or maintenance of StoreNext Retail Technologies LLC equipment and software. The drawings and specifications contained herein are the property of StoreNext Retail Technologies LLC and/or its licensors.

Third-party products, services, or company names referenced in this document may be trademarked or copyrighted by their respective owners, and are for identification purposes only.

Copyrights, trademarks and license agreements shall be governed and construed in accordance with the laws of the State of Texas and the Federal Arbitration Act, and shall benefit Retailix, its successors, and assigns.

Address comments and corrections to:

StoreNext Retail Technologies LLC
Software Program Director
6100 Tennyson Parkway
Suite 130
Plano, Texas 75024

Table of Contents

| | |
|--|----------|
| Table of Contents | i |
| Introduction | 1 |
| Front Office Enhancements | 2 |
| 11858 – WIC Items and Hot Card List Validation..... | 2 |
| POS Enhancements | 3 |
| 11445 – WIC Smart Card Support for CVV Benefits..... | 3 |
| Other Enhancements | 7 |

Introduction

New features were recently made recently to the StoreNext ISS45 system. The changes are reflected in the accompanying ISS45 7.1.3.0-090 software. The Change Request Document (CRD) number assigned to each enhancement is listed in the description heading.

These enhancements are explained in detail in the following pages and are not included in the latest Office Users Guide, WinPOS User Guide or Office Administrator's Reference. If you have any questions regarding this release, please contact StoreNext Support.

Front Office Enhancements

11858 – WIC Items and Hot Card List Validation

The import program that processes both state Approved Product Lists (APLs) and Hot Card List files (SmartWIC.exe) now performs a validation process before importing the WIC-related files. If the file is deemed to be invalid, information about the problem is now written to a log file.

Note:

In previous release, the import routine aborted if the file was corrupt or contained zero bytes.

The following validation rules are part of the new pre-import routine for the WIC APL Items and Hot Card lists:

- Ensures that the file can be opened.
- Ensures that first two bytes of the file begin with "A1" indicating the first record is a valid header.
- Reads all records in file adding up the total record count including header and trailer records.
- Ensures that the trailer record (last record in file) begins with "Z1".
- Ensures that byte locations 3 - 8 of the trailer have the total number of records in the file including the header and trailer.
- Ensures that byte locations 9 - 22 have a valid date and time format.
- Ensures that byte locations 23 - 24 have the value "02".
- Ensures that byte locations 25 - 31 have the number of item records in the file which should be two less than the total records from position 3 - 8.

If the file is determined to be invalid based on the pre-import routine, the file is not imported and the message "INVALID INPUT FILE!" displays.

Note:

Results of the import are logged to the SWVERIFY.LOG file (located in the same folder as the SmartWIC.exe file).

POS Enhancements

11445 – WIC Smart Card Support for CVV Benefits

ISS45 now supports redeeming WIC CVV (Cash Value Vouchers) benefits on EBT WIC cards with embedded “smart-chips” (a.k.a. Smart Card WIC). These cards now carry “amount-based” WIC CVV benefits for fruits and vegetables (in addition to “Unit of Measure-based” WIC benefits). The EFT/Pin Pad device is used to read the card to get WIC CVV benefits information and update information on the chip as CVV items have been purchased.

Note:

Support for Texas Smart Card EBT WIC was first released in ISS45 version 7.1.2.1-050. See the ISS45 7.1.2.1-050 Release Notes for more information.

WIC CVV benefit redemption at the POS with EBT WIC Smart Cards is seamless with existing functionality noting the following differences:

- The WIC CVV benefit quantity displayed on the EBT WIC Beginning Balance Report, EBT WIC Ending Balance Report and the Redemption Report will be a dollar amount and not a unit of measure amount.
- A WIC CVV benefit Unit of Measure (i.e. \$\$\$) indicating dollars will be printed on the EBT WIC Beginning Balance Report, EBT WIC Ending Balance Report and the Redemption Report.
- The WIC CVV benefit subcategory (i.e. FRUITS &/OR VEGETABLES) from the card’s Benefit Prescription File will be printed on the EBT WIC Beginning Balance Report, EBT WIC Ending Balance Report and the Redemption Report.
- When a WIC CVV item is sold, the dollar amount sold (in cents) is the amount of benefit decremented from the EBT WIC Smart Card’s Benefit Prescription Record.
 - The “net price” of the redeemed WIC CVV item (less any discount) is the amount of benefit used.

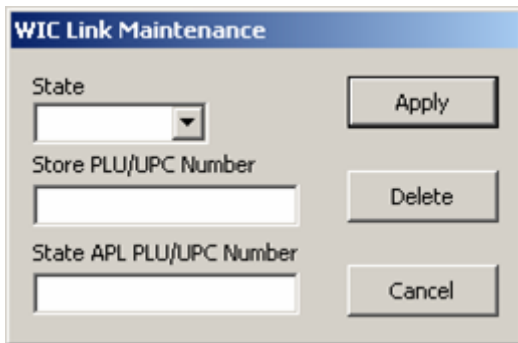
Note:

Similar to WIC “UOM-based” benefits, partial-item tendering with the Smart Card is prohibited with WIC CVV items. If there are not enough WIC CVV benefits on the card to fully purchase an item, no benefit redemption is permitted.

Store to State APL Mapping

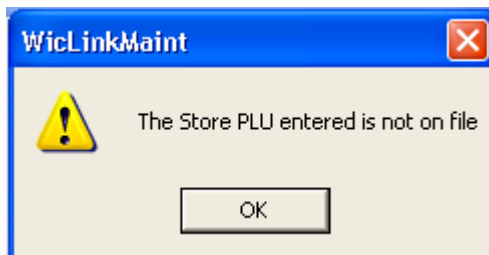
Since the state's PLU codes for produce items included in the state APL (Authorized Produce List) file may not match the store's item file, a standalone mapping has been included in this release to populate the WIC item file (Wicitems.qdx) on the POS with these items.

Once installed, the WicLinkMaint.exe program resides in the C:\PCMASTER\WIC folder. When executed, the following screen appears.

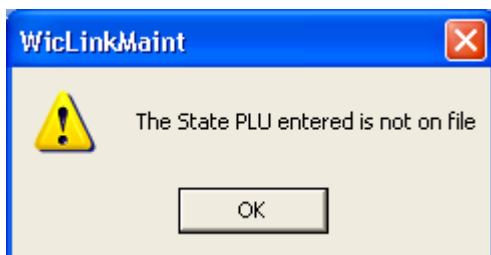


- 1 Select the state code associated with the item (using the field selection arrow).
- 2 Key in the store PLU\UPC code for the item.
- 3 Key in the state PLU\UPC code for the item.
- 4 Click **Apply** to link the items.

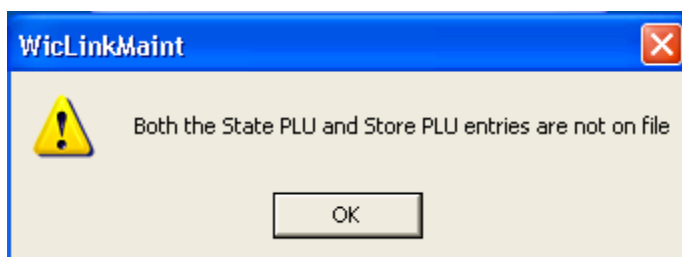
If the entered store PLU does not exist in item file (Plupos.qdx) but the entered state item does exist in Wicitems.qdx, the following warning message displays:



If the entered store PLU does exist in item file (Plupos.qdx) but the entered state PLU does not exist in Wicitems.qdx, the following warning message displays:

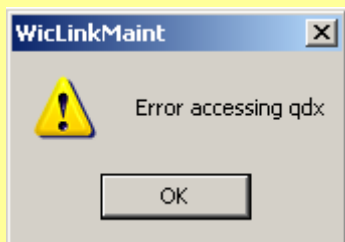


If neither entered item exists in their respective QDX file, the following warning message displays:



Note:

If WicLinkMaint.exe is attempted to be launched and services have not started (or a QDX error has occurred), the following warning displays:



Note:

A link for two previously mapped PLU codes can be removed by following steps 1 through 3 and then clicking the **Delete** button.

Note:

The WicLinkMaint.exe program writes to the wiclink.csv file. The WICSTATE program has been modified so that when a rebuild of the Wicitems.qdx file is performed (after the state APL files are received), a record is created in Wicitems.qdx for each linked PLU\UPC in wiclink.csv.

Note:

In this release ISS45 no longer refreshes the EBT WIC QDX files after an EOD if they have not been updated by the state. This allows the POS terminal to return to Sale Mode more quickly (benefiting 24-hour store environments).

To reduce the amount of refresh processing time required when there is a change to these files, the following commands can be added to the POS terminal's Winpos.ini file:

FastLoadFile=205

FastLoadFile=206

FastLoadFile=207

(where Hotcard.qdx = 205, Wicitems.QDX = 206 and Wiccat.QDX = 207)

The Fastload process buffers records in memory and writes to the QDX file as a large block when the buffer is full. A maximum of 10 files can be designated as Fast Load files (in addition to the PLU, Template and Cross QDX files which are hard-coded to use this process).

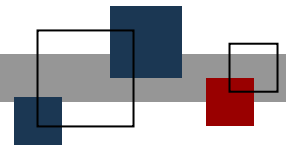
Other Enhancements

- 11870 – Check endorsements on IBM 4610 printers now endorse the back of check before the front of check. In previous releases, the order of check processing on the IBM printer was: (1) MICR Read, (2) Flip Check, (3) Endorse Front, (4) Flip Check and (5) Endorse Back. To reduce the number of times the cashier must handle the check, the sequence has been changed in this release to: (1) MICR Read, (2) Endorse Back, (3) Flip Check and (4) Endorse Front.

Note:

In the POST Configuration Screen's WinPOS H/W Tab, the **Printer Type** needs to be set to "IBM 4610" and the **Use OPOS** checkbox needs to be checked. On the E-Ticket – OPOS Tab, enter the **OPOS Printer Driver Name** if not previously defined.

- 11762 – The FSA Total that prints on the bottom of the customer receipt is now prevented from displaying a negative amount. In previous releases, issued promotions on items linked to FSA-flagged departments caused the FSA Total to print negative. A negative FSA subtotal is now reset to zero before the tendering process begins.



© StoreNext Retail Technologies LLC 2009

StoreNext Retail Technologies LLC endeavors to ensure that the information in this document is correct and fairly stated but does not accept liability for any error or omission.

The development of StoreNext products and services is continuous and published information may not be up to date. It is important to check the current position with StoreNext. This document is not part of a contract or license save insofar as may be expressly agreed.