



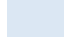


The logo for ISS 45, consisting of the letters 'ISS' in a large, bold, black sans-serif font above the number '45' in a large, bold, black serif font, all enclosed within a thin black rectangular border.

-  *ISS45 Version 7.1.3.0-140*
-  *Release Notes & What's New*
- 
- 
- 

ISS45 V7 Release Notes & What's New

Date of Issue	Product Identification Number	Part Number	Brief Description
November 2007	45001/080	89000408	7.1.2.1-050 Release
April 2008	45001/080	89000444	7.1.3.0-050 Prelim
June 2008	45001/080	89000444B	7.1.3.0-050 Updated
May 2009	45001/080	89000516	7.1.3.0-070
September 2009	45001/080	89000533	7.1.3.0-090
May 2010	45001/080	89000564	7.1.3.0-140

**© Copyright StoreNext Retail Technologies LLC 1995-2010
All rights reserved**

This publication is protected by federal copyright law. No part of this publication may be reproduced or transmitted into any human or computer language in any form or by any means, stored in a retrieval system, transmitted, redistributed, translated or disclosed to third parties, or de-compiled in any way including, but not limited to, photocopy, photograph, electronic, mechanical, magnetic or manual without the express written permission of StoreNext Retail Technologies LLC or its licensors, if any. This document, notwithstanding the above, may be distributed in electronic or printed form to personnel who are employed by either (1) a StoreNext customer of the subject system of this document or (2) personnel from an authorized StoreNext dealer of the subject system of this document. All copies, so distributed and/or so authorized, shall contain a full copy of this copyright notice.

StoreNext Retail Technologies LLC endeavors to ensure that the information in this document is correct and fairly stated but does not accept liability for any error or omission. StoreNext Retail Technologies LLC makes no representation or warranties with respect to the contents hereof, and specifically disclaims any implied warranties of merchantability or fitness for a particular purpose or non-infringement. No commitments by StoreNext or its suppliers are made from this documentation which is provided for information only.

Development of StoreNext products and documentation is continuous: StoreNext Retail Technologies LLC reserves the right to revise this publication and to make changes from time to time in the contents hereof or in the products herein described or discussed without notice and without any obligation of StoreNext Retail Technologies LLC to notify any person or organization of such revision or changes. Information published in this document will likely become obsolete over time and it is recommended that users regularly check for updates and newer versions.

StoreNext Retail Technologies LLC has prepared this manual for use by users, authorized third parties and personnel of StoreNext Retail Technologies LLC as a guide to the proper installation, operation, customization and/or maintenance of StoreNext Retail Technologies LLC equipment and software. The drawings and specifications contained herein are the property of StoreNext Retail Technologies LLC and/or its licensors.

Third-party products, services, or company names referenced in this document may be trademarked or copyrighted by their respective owners, and are for identification purposes only.

Copyrights, trademarks and license agreements shall be governed and construed in accordance with the laws of the State of Texas and the Federal Arbitration Act, and shall benefit Retailix, its successors, and assigns.

Address comments and corrections to:

StoreNext Retail Technologies LLC
Software Program Director
6100 Tennyson Parkway
Suite 130
Plano, Texas 75024

Table of Contents

Table of Contents	i
Introduction	1
POS Enhancements	2
11463 – New LaneHawk Interface	2
Front Office	3
POS.....	7
Issues Fixed	12
Technical Reference Appendix	14
New TLOG Information Transactions.....	14
QDX File Changes	15
Out of Scope	19
Dependencies	20

Introduction

A new feature was recently added to the StoreNext ISS45 system. The change is reflected in the accompanying ISS45 7.1.3.0-140 software.

This enhancement is explained in detail in the following pages and is not included in the latest Office Users Guide, WinPOS User Guide or Office Administrator's Reference. If you have any questions regarding this release, please contact StoreNext Support.

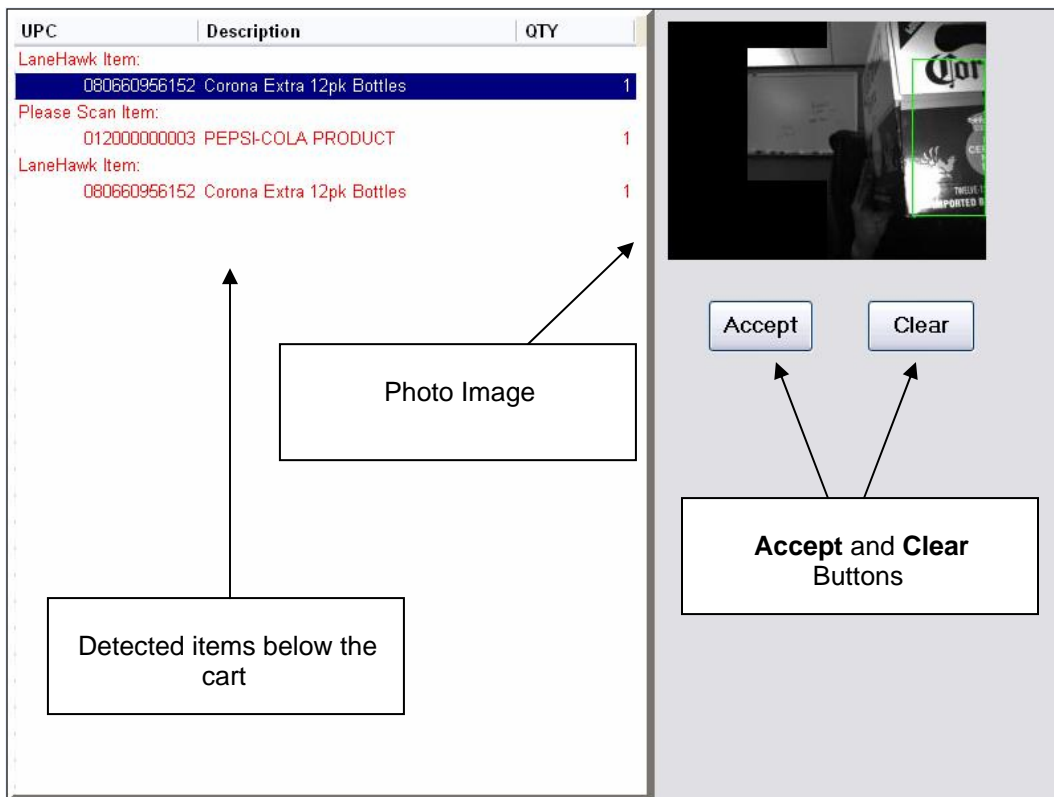
POS Enhancements

11463 – New LaneHawk Interface

LaneHawk is a solution from Evolution Robotics that uses digital video cameras and software to identify “when” and “what” items are on the bottom of a customer’s cart. Using “visual pattern recognition” for object recognition, LaneHawk automatically detects and identifies “below the basket” items.

Items that LaneHawk recognize are typically the 300-500 items most likely to be placed under the cart. These items are photographed using a basic digital camera, and the images are stored in the LaneHawk checkout database with associated UPC information.

ISS45 now provides a mechanism to alert cashiers when these items are detected and allows them to be added to the current transaction through the LaneHawk interface window. When the transaction is totaled, a full-screen LaneHawk interface window takes focus. A list of the detected items and their image display so resolution can take place.



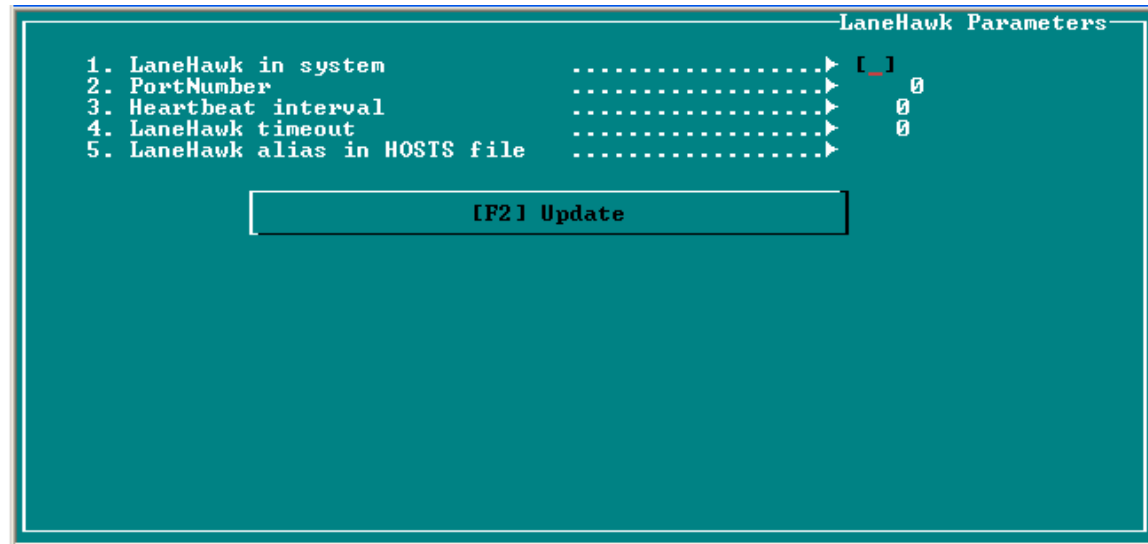
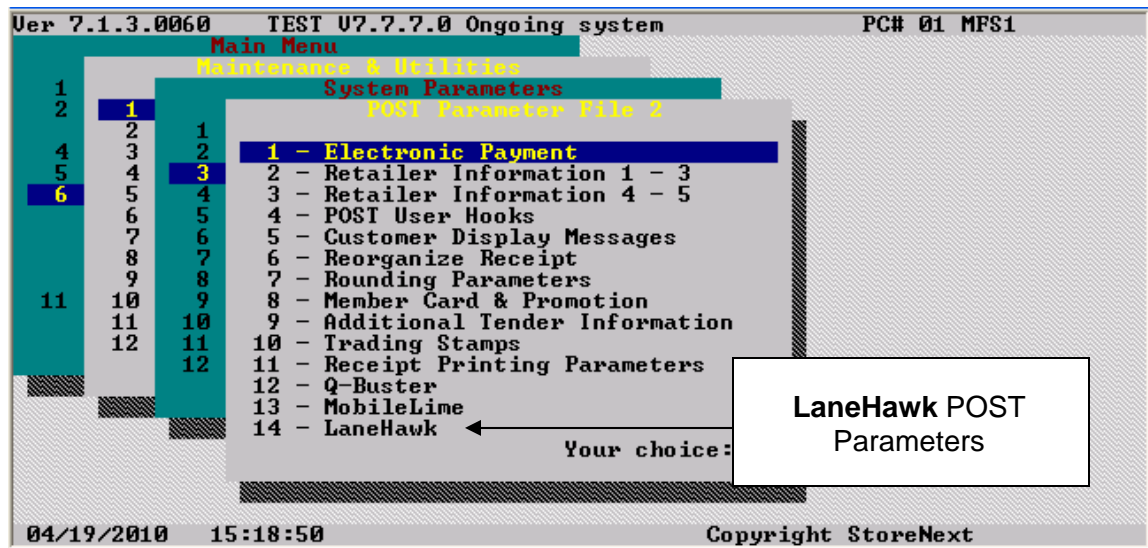
Note:

The ISS45 LaneHawk interface is an optionally licensed ISS45 module and requires the purchase and installation of additional hardware and software from a third-party vendor. Please contact StoreNext for additional information.

Front Office

New Parameters

As part of this feature, parameters have been established in the new LaneHawk Parameters Screen (6-3-1-14).



Parameter	Explanation
LaneHawk in system	This parameter specifies whether LaneHawk is enabled at the POS.
Port Number	Use this parameter to define the TCP/IP port number for the LaneHawk server connection. Use a default of "2223" unless otherwise required by the store's configuration.
Heartbeat interval	This parameter specifies how often (in seconds) heartbeat messages should be sent to the POS by the LaneHawk application. Use a default of "15" seconds unless otherwise required by the store's configuration. A setting of 0 indicates heartbeat messages should not be sent.
LaneHawk timeout	This parameter specifies how long (in seconds) the LaneHawk application should wait for a heartbeat reply before dropping the connection and retrying. Use a default of "1" second unless otherwise required by the store's configuration.
LaneHawk alias in HOSTS file	This parameter defines the LaneHawk server alias that will match the host file definition for IP resolution.

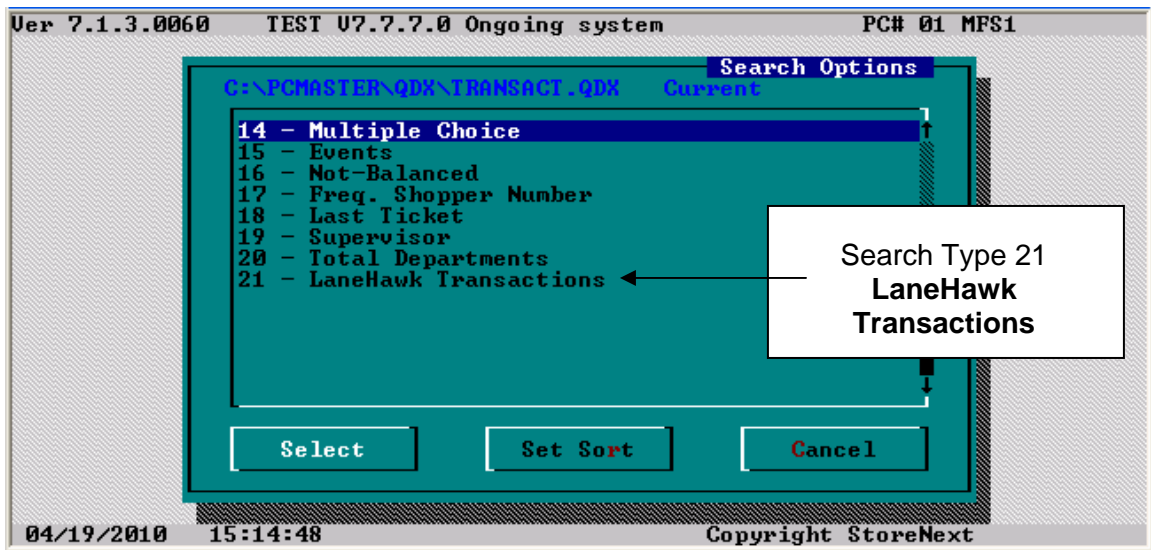
New Electronic Journal Search Type

A new Electronic Journal Search Type found in this ISS45 release allows the store to locate transactions where "bottom of the basket" items were detected by LaneHawk. LaneHawk Transactions can be searched in the Electronic Journal by a POS resolution scenario (or for all LaneHawk transactions):

- Matched Items Added – An exact match of the item was identified by LaneHawk. The item was added to the ticket through the LaneHawk Graphical User Interface (GUI) by pressing the **Accept** button.
- Matched Items Manually Added – An exact item match or a manufacturer match was identified by LaneHawk and the item was added to the ticket by scanning the item.

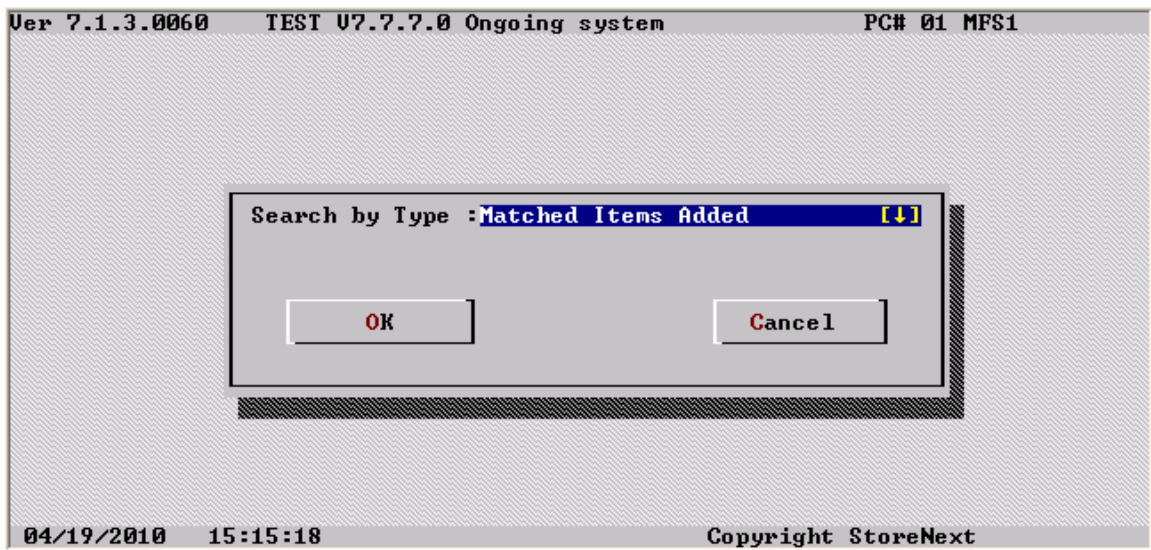
- Detected Items Cleared – An item was identified by LaneHawk and cleared from the LaneHawk GUI.
- All LaneHawk Transactions – All transactions where LaneHawk “bottom of the basket” items were detected.

Search Type 21 “LaneHawk Transactions” now appears in the Electronic Journal Search Type Listing.

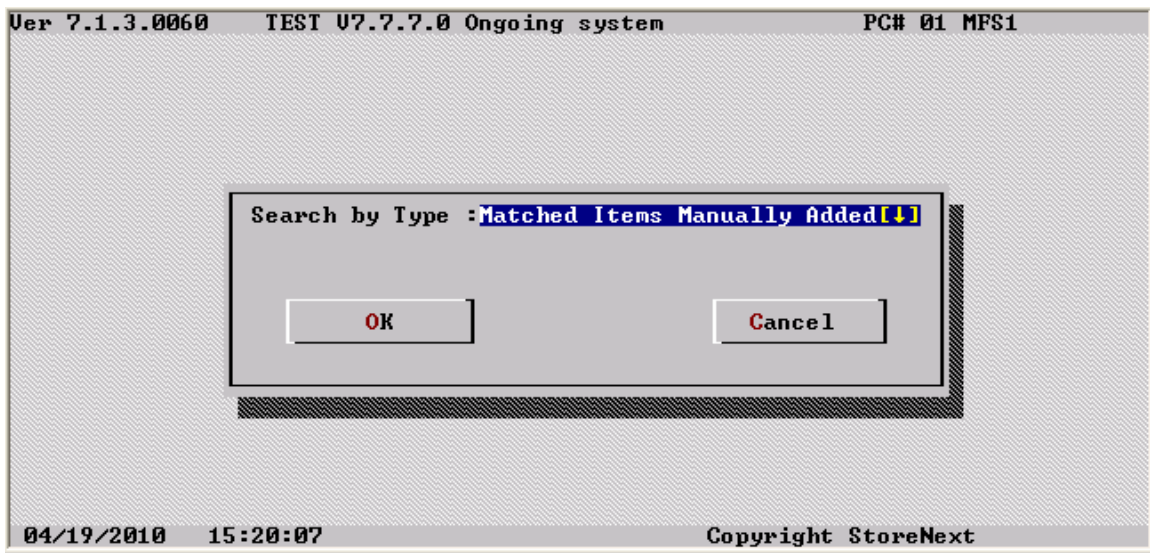


When selected, the LaneHawk Transaction Type search window defaults to “Matched Items Added”. Press the down arrow to change the selection.

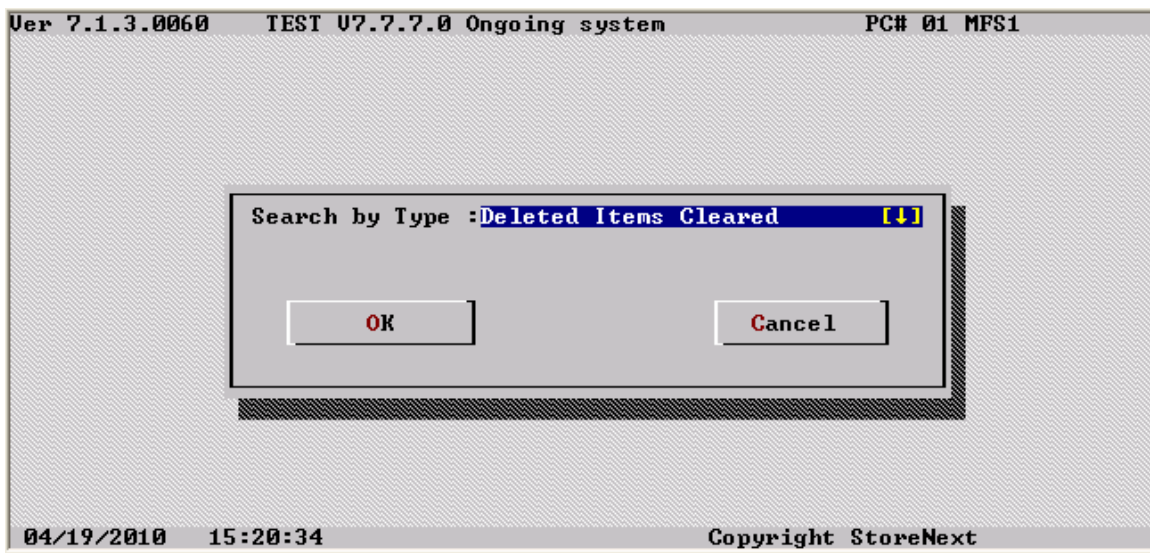
Matched Items Added



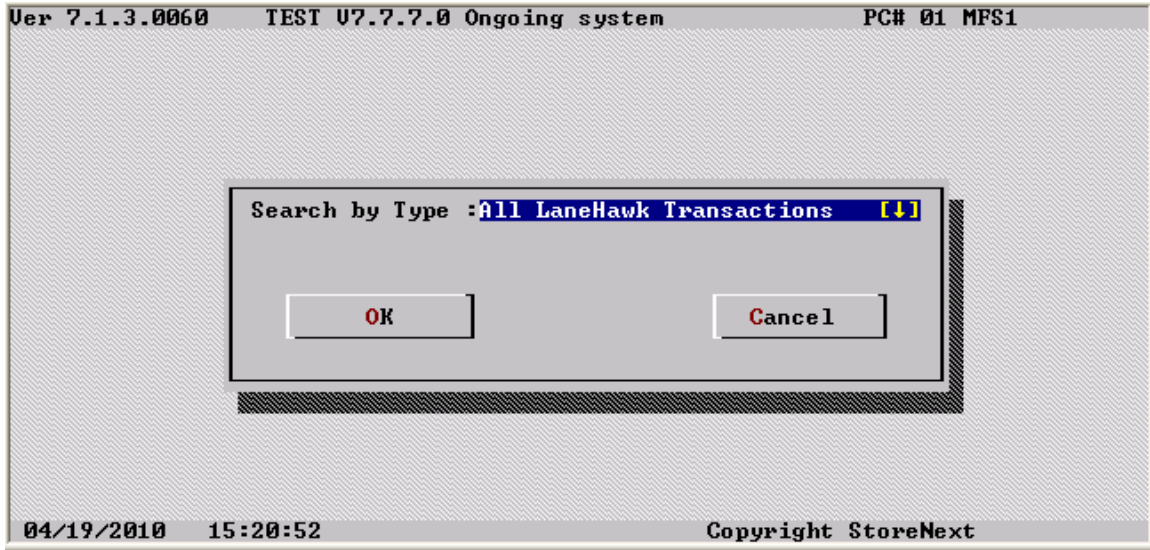
Matched Items Manually Added



Detected Items Cleared



All LaneHawk Transactions



Note:

A ticket that contains items linked to different LaneHawk resolution scenarios will appear under the search results of more than one search type.

Note:

Search results only identify transactions where the selected LaneHawk events took place. The specific items detected by LaneHawk in the ticket are not identified when the ticket is viewed.

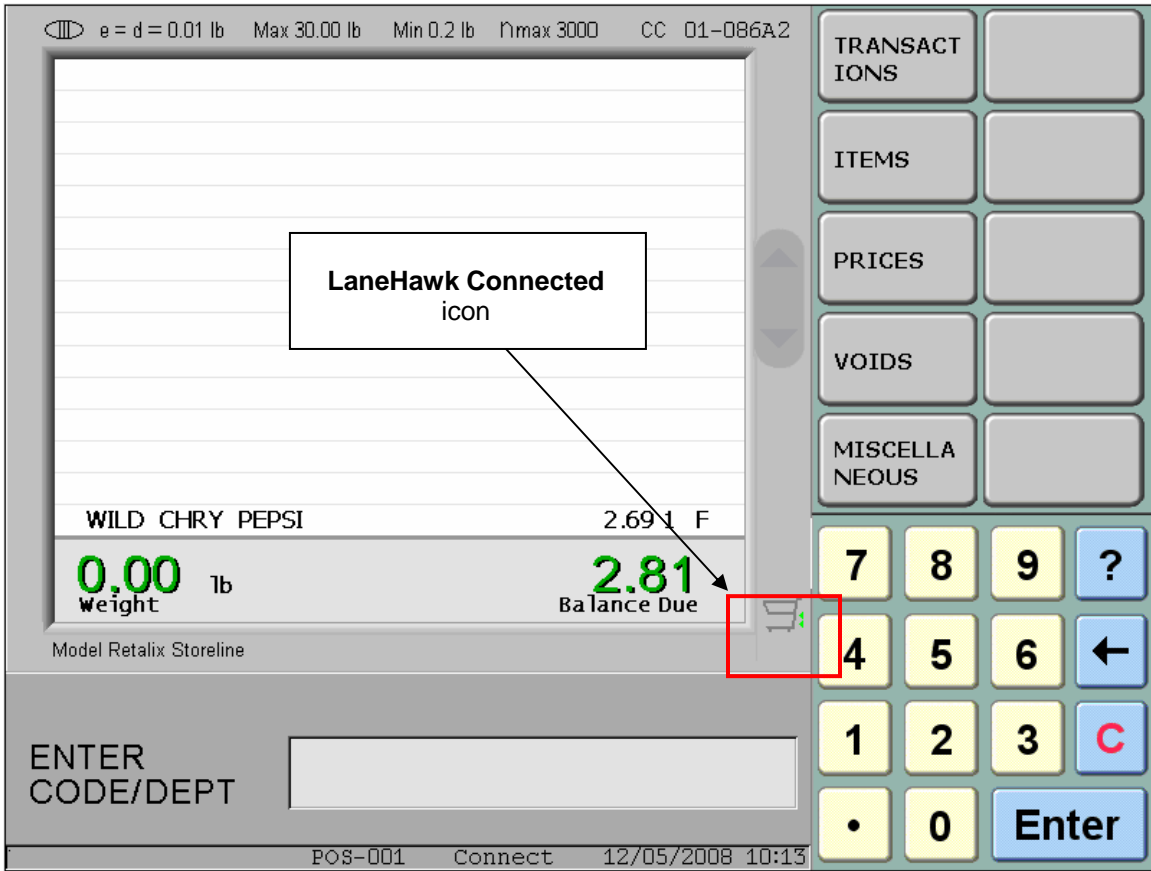
POS

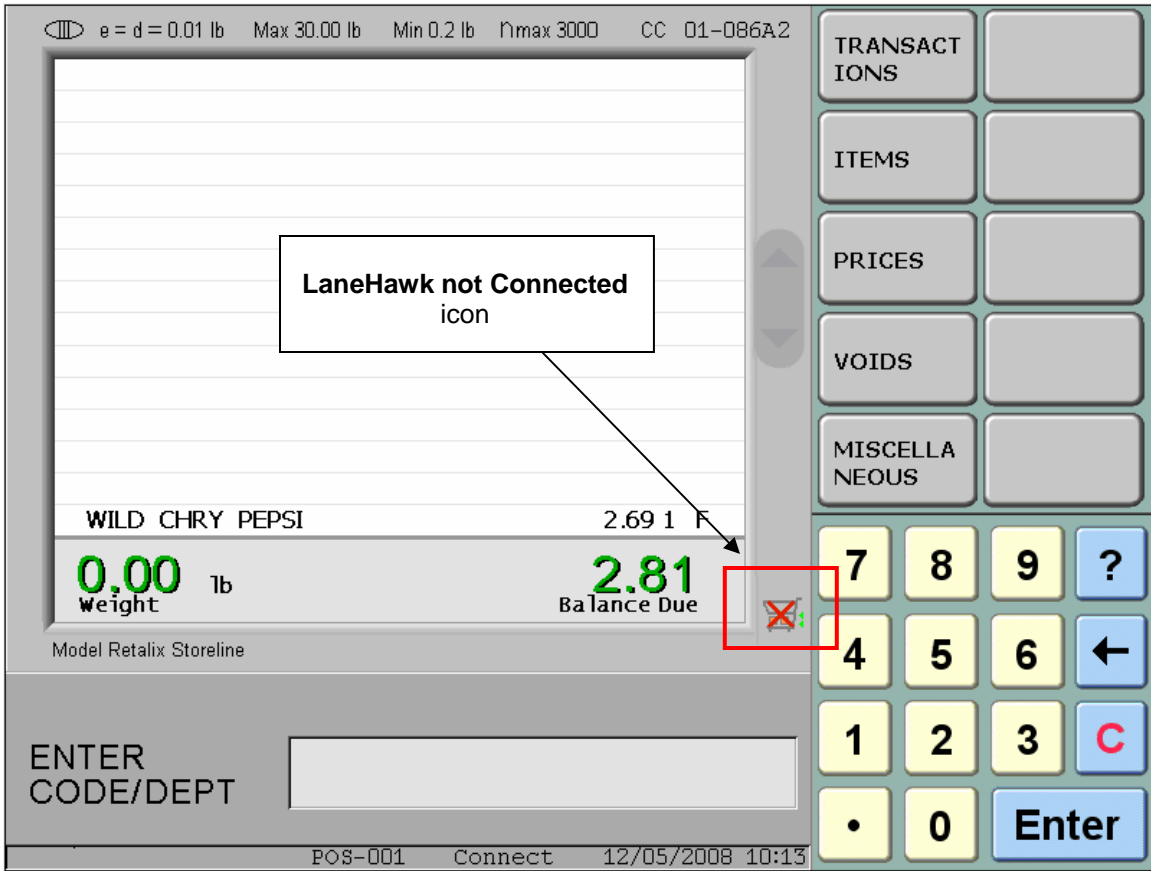
New Cashier Display Notification Icons

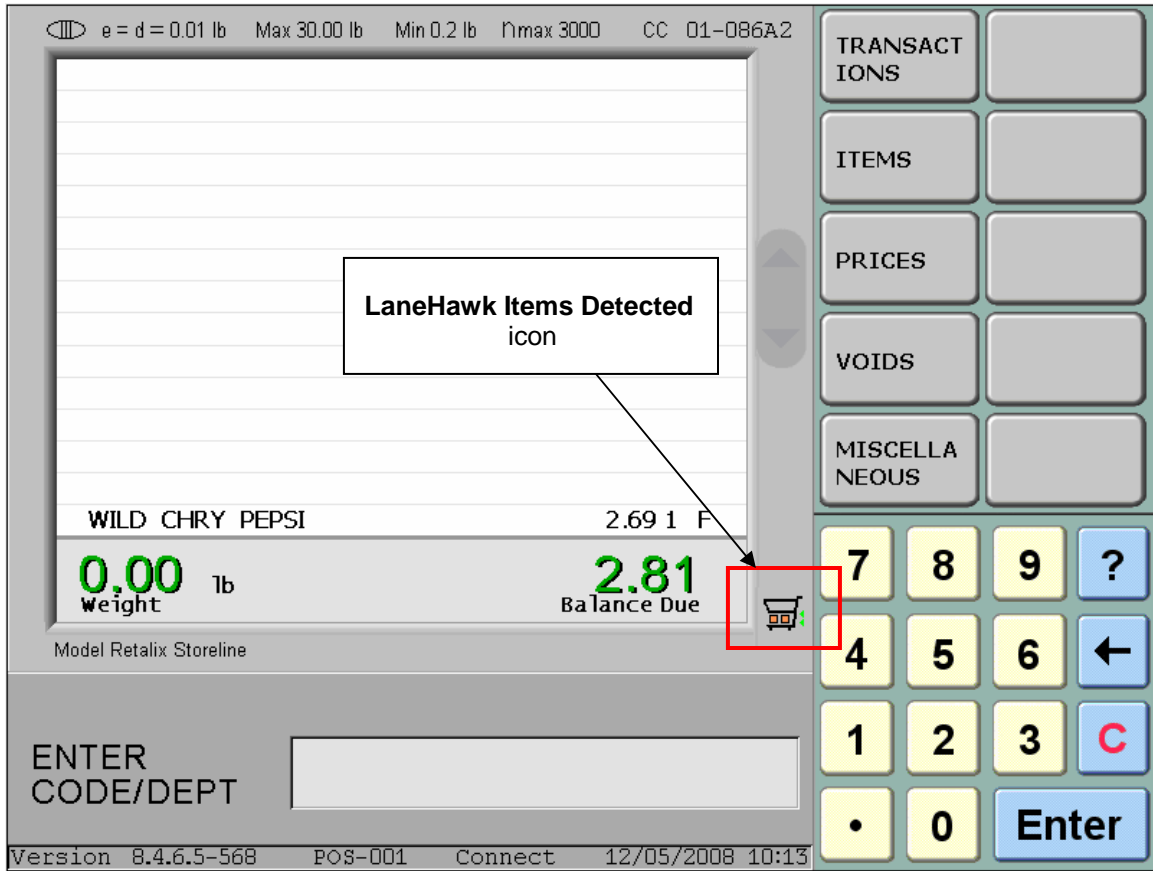
When LaneHawk is installed, configured and enabled, new POS cashier notification (shopping cart) icons will notify the cashier of the three different LaneHawk status conditions:

- LaneHawk Connected (empty shopping cart) – ISS45 is connected to the LaneHawk interface.
- LaneHawk not Connected (red X through the cart) – ISS45 is not connected to the LaneHawk interface.
- LaneHawk Items Detected (blocks below cart) – Items have been detected “below the basket” by LaneHawk.

These icons appear below and to the right of where the Balance Due amount is displayed.







LaneHawk Item Resolution

When an ISS45 transaction is totaled with LaneHawk items and the LaneHawk interface window has been granted focus, the cashier can take one of three possible actions.

- Add the highlighted item to the ISS45 transaction by pressing the “Accept” button (without removing them from beneath the cart). The item will be removed from the LaneHawk items list.
- Add an item to the transaction by scanning the UPC code. The item will be added to the ISS45 transaction and removed from the LaneHawk items list.
- Clear the item from the LaneHawk items list by pressing the “Clear” button. The item will not be added to the ISS45 transaction and removed from the LaneHawk items list. (This button is used if the item already has been added to the ticket, it will be added later or the wrong item was detected).

Once LaneHawk items have been resolved and the list is empty, the LaneHawk interface application will return focus to WinPOS to continue totaling and tendering the transaction.

Note:

At the time interface window is launched, the POS will not accept a scan from devices that need application focus (like scanners configured as keyboard emulation).

Issues Fixed

Issues were addressed in ISS45 system. These changes are reflected in the accompanying ISS45 7.1.3.0-140 software.

The list is sorted by the original defect number assigned to the issue. If the issue is tied to an implemented Change Request, the Origin number listed is the original Change Request Document number:

Defect ID	Origin	Summary
12685		Forgive Tax not working with Multiple Tax Rates with Food Stamps.
<p><u>Scenario:</u></p> <ol style="list-style-type: none">1) Setup two items (both Food Stampable), one with a high tax rate and one with a low tax rate.2) Check "Forgive Tax on F/S Partial Tenders by Highest Tax Rate" (Tax, Food Stamp Options – 6-1-2-4).3) Ring up both items.4) Cash out with Food Stamps. <p>Expected Results: Tax should be forgiven on both items.</p> <p>Actual Results: Tax is only forgiven on one item.</p>		

Defect ID	Origin	Summary
12716		Symbol character in XML report causes error when trying to open the report with Windows Explorer.
<p data-bbox="224 537 337 569"><u>Scenario:</u></p> <ol data-bbox="224 604 1218 905" style="list-style-type: none"><li data-bbox="224 604 643 636">1) Create a New Price promotion.<li data-bbox="224 667 773 699">2) Use "P&G" for the promotion description.<li data-bbox="224 730 743 762">3) Run a transaction using this promotion.<li data-bbox="224 793 423 825">4) Run an EOD.<li data-bbox="224 856 1218 905">5) Open the text report (in MEMPROM.ZIP) and the XML report (in MEMXML.ZIP). <p data-bbox="224 940 1289 1010">Expected Results: The XML report should not error on any symbol character used for the promotion description.</p> <p data-bbox="224 1052 1333 1161">Actual Results: The text report can be opened without a problem. The XML report causes an error when opened with Windows Explorer - "A semi colon character was expected. Error processing resource.....".</p>		

Technical Reference Appendix

New TLOG Information Transactions

A new TLOG Information Transaction “LaneHawk Manual Item” (Opcode 0x70, Function 0xF7) has been added in this release for items manually added to the ticket from the LaneHawk GUI (by scanning the UPC). The layout is as follows:

```
struct trs_lanehawk_manual_item_  
  
    unsigned char opcode;        // 00  0x70  
    unsigned char function;     // 01  0xF7  
    unsigned char action;       // 02  0 = exact upc match  
                                //    1 = mfg code match  
    unsigned char code[7];      // 03  Actual item code sold  
    unsigned char disp_code[7]; // 10  Matching code from LH list  
                                //  
    unsigned char nu[27];       // 17  
    struct trans_tail_tail;     // 44
```

In addition, a new TLOG Information Transaction “LaneHawk Clear Item” (Opcode 0x70, Function 0xFA) has been added in this release for items cleared from LaneHawk GUI. The layout is as follows:

```
struct trs_lanehawk_clear_item_  
  
    unsigned char opcode;        // 00  0x70  
    unsigned char function;     // 01  0xFA  
    unsigned char code[7];      // 03  PLU Code (BCD)  
    unsigned char nu[35];       // 10  
    struct trans_tail_tail;     // 44
```

Note:

The Data Flag 2 (bit 6) in the PLU Sale Extension Record (0x11) is set when an item is added to the ticket from the LaneHawk GUI by pressing the **Accept** button.


```

    unsigned short Q_not_recalled;          //9   NUM   Minutes before raising a
                                           //      "Not recalled" alert

    long          Q_pre_auth_amount;       //11  NUM_D  Pre-authorized amount

    unsigned char Q_nu01[71];             //15  NU    Not used
    unsigned char stamp_01_01;           //86  NUM   Stamp for write validation
} Quick;
// End of Quick area

unsigned char round_table[10];           //87  NUM   Round-to parameters
struct
{
    unsigned char round_at_total          :1; //97  BIT   Rounding on total
    unsigned char round_sign_reverse     :1; //97  BIT   Reverse signs on Rounding tender ticket
    unsigned char nu                      :6; //97  NU
}rounding_param;

//FSA TD SN #9810
struct
{
    unsigned char OptEnableFsaItemSubstantiation :1; //98 FSA
    unsigned char nu98                          :7; //98 not used
} fsa_flags;

unsigned char RxPrintChar;                //99 FSA
unsigned char NonRxPrintChar;             //100 FSA
unsigned char FsaTotalsTemplate[10];      //101 FSA
unsigned char FsaDisclaimerTemplate[10];  //111 FSA

unsigned char filler14[44];               //121  NU    Not used
unsigned char stamp_01_02;               //165  NUM   Stamp for write validation
unsigned char sign_currency2;             //166  ASCII  2nd Currency character
unsigned char sign_currency;              //167  ASCII  Currency sign
unsigned char sign_minus;                 //168  ASCII  Minus sign
unsigned char sign_decimal;               //169  ASCII  Decimal sign
unsigned char sign_format;                 //170  ASCII  Format sign
unsigned char sign_non_taxable;           //171  ASCII  Non-taxable sign

```

```

unsigned char sign_multi_tax;           //172 ASCII Multi tax sign
unsigned char sign_food_stamp;         //173 ASCII Food stamp sign
unsigned char sign_non_food_stamp;     //174 ASCII Non food stamp sign
unsigned char cost_plus_sign[2];       //175 ASCII Cost plus sign
unsigned char non_cost_plu_sign[2];    //177 ASCII Non cost plus sign
unsigned char freq_shopper_sign[2];    //179 ASCII Frequent shopper sign
unsigned char non_freq_shopper_sign[2]; //181 ASCII Non frequent shopper sign
unsigned char sign_reserved[4];        //183 NU Reserved
unsigned short tare_weight_table[30];  //187 NUM Tare weight parameters
unsigned short tare_weight_percent[30]; //247 NUM Tare weight percents

struct coupon_values_code_table_      //307 STRUCT Coupon values code table
{
    unsigned char type;                // NUM Type
    unsigned char buy_qty;              // NUM Buy quantity
    unsigned short get_value;           // NUM_D Get value
    char filler[2];                    // NU Not used
} coupon_value[100];

char print_on_check_dollar[10];        //907 ASCII print currency on check
                                        // dollar
char print_on_check_cents[10];         //917 ASCII print currency on check
                                        // cents

struct
{
    unsigned char in_system :1; //927
    unsigned char calc_bef_vender_cpn :1; //927
    unsigned char calc_bef_bonus_cpn :1; //927
    unsigned char calc_bef_store_cpn :1; //927
    unsigned char no_mssg_cshr_screen :1; // Display message on operator screen
    unsigned char points_with_decimal :1; // Display/Print points with
                                        // decimal point
    unsigned char unll :2; //927
    long value_of_one; //928
    char template_id[10]; //932

```

```

    unsigned char calc_method;           //942
    unsigned char filler[19];           //943

}trading_stamps;

long express_items;                    //962 NUM    Number of items in express
                                        //          orders
long idle_limit;                       //966 NUM    Multiply item time by this
                                        //          parameter to limit idle time
unsigned char opt_card_prog :1;        //970 BIT    Community partner in system
unsigned char opt_nul :7;              //970 BIT    NU

unsigned char card_prog_UPC;           //971 NUM    Card program UPC barcode
unsigned char card_prog_loc;           //972 NUM    location of prog. in card
unsigned char stamp_01_03;             //973 NUM    Stamp for write validation

//CCTV
struct                                  //974
{
    unsigned char UseTcpDirect          :1;    //
    unsigned char nu_975                :7;    //

} CCTV_bits;

unsigned char TcpDirectHostName[19];    //975
unsigned short TcpDirectPort;           //994

unsigned char bLaneHawkInSystem :1;     //996 (2020) DR 11463
unsigned char notused :7;              //996 (2020) DR 11463
unsigned short ushLaneHawkPort;        //997 (2021) DR 11463
unsigned short ushLaneHawkHBIntervalInSec; //999 (2023) DR 11463
unsigned short ushLaneHawkTimeoutInSec; //1001 (2025) DR 11463
unsigned char uchLaneHawkHostsAlias[16]; //1003 (2027) DR 11463

unsigned char filler18[4];              //1019 NU    Not used

char qdx_flag1;                        //1023 NU    Not used

```

Out of Scope

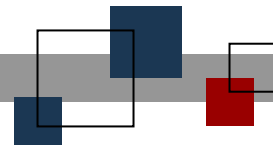
Limitations of new features in this release are listed below (and were not addressed in development).

FSD Number	Enhancement	Out of Scope
12716	LaneHawk Interface	<p>The LaneHawk interface is available for the current release only (and will not be made compatible with previous ISS45 releases). It is an optionally licensed feature (and is billed separately).</p> <p>ISS45 LaneHawk development excluded:</p> <ol style="list-style-type: none">1. Configurations using 2x20 cashier displays.2. Changes to support this feature on self-checkout terminals.3. Performing an EJ Search for LaneHawk transactions of more than one resolution type at a time. <p>Note:</p> <p>The above limitations are known as of this writing, and are provided in order to assist users and support personnel to plan, install and operate the capabilities described in this document. While StoreNext Retail Technologies LLC endeavors to ensure that this information is correct and fairly stated, no attempt is made here to catalog all limitations that could be construed or that may become known in the course of use or experience.</p>

Dependencies

Dependencies to utilize new features in this release are listed below.

FSD Number	Enhancement	Dependencies
12716	LaneHawk Interface	<ol style="list-style-type: none">1. Non 2x20 cashier display.2. POS touch-screen panel.3. LaneHawk GUI application (loaded on POS Terminal).4. LaneHawk Enterprise Manager (running on the LaneHawk server).



© StoreNext Retail Technologies LLC 2010

StoreNext Retail Technologies LLC endeavors to ensure that the information in this document is correct and fairly stated but does not accept liability for any error or omission.

The development of StoreNext products and services is continuous and published information may not be up to date. It is important to check the current position with StoreNext. This document is not part of a contract or license save insofar as may be expressly agreed.