






The logo for ISS 45, consisting of the letters 'ISS' in a large, bold, black serif font above the number '45' in a similar font, all enclosed within a thin black rectangular border.

-  *ISS45 Version 7.1.3.0-150*
-  *Release Notes & What's New*
- 
- 
- 

## ISS45 V7 Release Notes & What's New

<b>Date of Issue</b>	<b>Product Identification Number</b>	<b>Part Number</b>	<b>Brief Description</b>
November 2007	45001/080	89000408	7.1.2.1-050 Release
April 2008	45001/080	89000444	7.1.3.0-050 Prelim
June 2008	45001/080	89000444B	7.1.3.0-050 Updated
May 2009	45001/080	89000516	7.1.3.0-070
September 2009	45001/080	89000533	7.1.3.0-090
May 2010	45001/080	89000564	7.1.3.0-140
June 2010	45001/080	89000564	7.1.3.0-150

**©Copyright StoreNext Retail Technologies LLC 1995-2010  
All rights reserved**

This publication is protected by federal copyright law. No part of this publication may be reproduced or transmitted into any human or computer language in any form or by any means, stored in a retrieval system, transmitted, redistributed, translated or disclosed to third parties, or de-compiled in any way including, but not limited to, photocopy, photograph, electronic, mechanical, magnetic or manual without the express written permission of StoreNext Retail Technologies LLC or its licensors, if any. This document, notwithstanding the above, may be distributed in electronic or printed form to personnel who are employed by either (1) a StoreNext customer of the subject system of this document or (2) personnel from an authorized StoreNext dealer of the subject system of this document. All copies, so distributed and/or so authorized, shall contain a full copy of this copyright notice.

StoreNext Retail Technologies LLC endeavors to ensure that the information in this document is correct and fairly stated but does not accept liability for any error or omission. StoreNext Retail Technologies LLC makes no representation or warranties with respect to the contents hereof, and specifically disclaims any implied warranties of merchantability or fitness for a particular purpose or non-infringement. No commitments by StoreNext or its suppliers are made from this documentation which is provided for information only.

Development of StoreNext products and documentation is continuous: StoreNext Retail Technologies LLC reserves the right to revise this publication and to make changes from time to time in the contents hereof or in the products herein described or discussed without notice and without any obligation of StoreNext Retail Technologies LLC to notify any person or organization of such revision or changes. Information published in this document will likely become obsolete over time and it is recommended that users regularly check for updates and newer versions.

StoreNext Retail Technologies LLC has prepared this manual for use by users, authorized third parties and personnel of StoreNext Retail Technologies LLC as a guide to the proper installation, operation, customization and/or maintenance of StoreNext Retail Technologies LLC equipment and software. The drawings and specifications contained herein are the property of StoreNext Retail Technologies LLC and/or its licensors.

Third-party products, services, or company names referenced in this document may be trademarked or copyrighted by their respective owners, and are for identification purposes only.

Copyrights, trademarks and license agreements shall be governed and construed in accordance with the laws of the State of Texas and the Federal Arbitration Act, and shall benefit Retailix, its successors, and assigns.

Address comments and corrections to:

**StoreNext Retail Technologies LLC**  
**Software Program Director**  
6100 Tennyson Parkway  
Suite 130  
Plano, Texas 75024

# Table of Contents

<b>Table of Contents</b> .....	<b>i</b>
<b>Introduction</b> .....	<b>1</b>
12628 – Enforced WIC CVV Declared Voucher Acceptance (BO/POS).....	2
Back Office .....	2
POS.....	3
12860 – Expanded WIC Support for CFI Items (POS).....	4
<b>Technical Reference Appendix</b> .....	<b>5</b>
Out of Scope .....	5
Dependencies .....	7
New TLOG Flag .....	8
New QDX File .....	8
New Q-DEX.PRM.....	9

# Introduction

Several new features and enhancements were made recently to the StoreNext ISS45 system as a result of customer change requests and internal research and development. These changes are reflected in the accompanying ISS45 7.1.3.0-150 software.

The Change Request Document (CRD) number assigned to each enhancement is listed in the description heading. Following the change description is an abbreviation (or combination thereof) of the ISS45 area affected:

(BO) – Back Office

(POS) – WinPOS

(Sys) – System / Services

If you have any questions regarding this release, please contact StoreNext Support.

## 12628 – Enforced WIC CVV Declared Voucher Acceptance (BO/POS)

A new parameter found in the release will ensure that WIC CVV voucher amounts tendered in WIC CVV Sale Mode match those amounts declared at the beginning of the ticket.

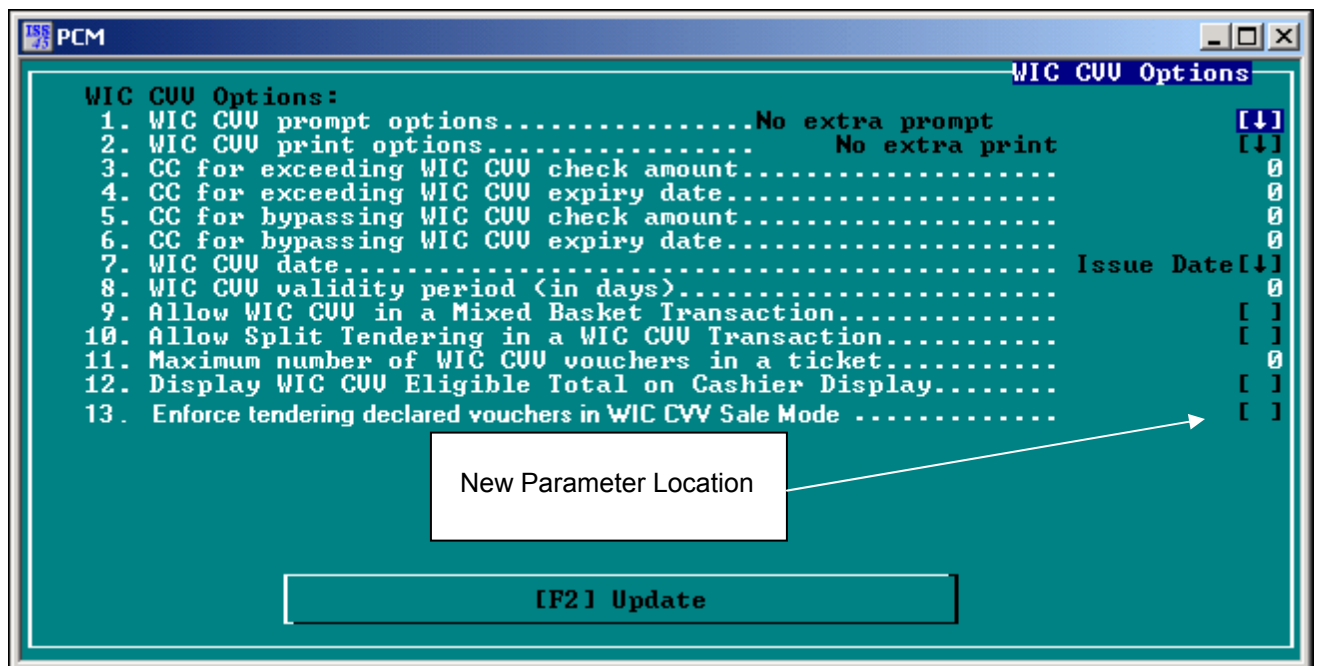
### Note:

In previous releases, the POS only enforced that the dollar amounts of tendered WIC CVVs did not exceed those voucher amounts declared at the beginning of the transaction.

## Back Office

### New Parameter

To support this feature, a new parameter has been established in the new **WIC CVV Options** Screen (6-1-2-15).



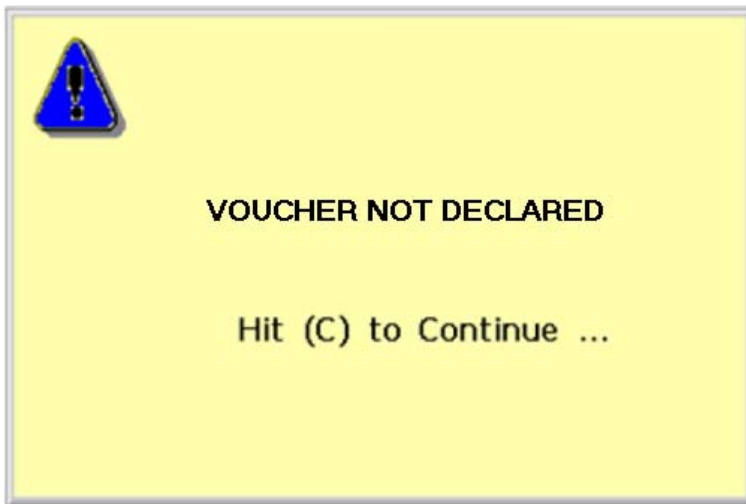
Parameter	Explanation
Enforce tendering declared vouchers in WIC CVV Sale Mode	When this parameter is checked, WIC CVV voucher amounts tendered must match the voucher amounts declared in WIC CVV Sale Mode.

**Note:**

The “WIC CVV Prompt Options” parameter (6-1-2-15 #1) must be set to either “Prompt for Amt.” or “Prompt for Amt. & Exp. Date” for WIC CVV voucher amount entry to be prompted for at the beginning of the ticket.

**POS**

When WIC CVV voucher amounts are prompted for at the beginning of the ticket (inside WIC CVV Sale Mode), the POS now checks the new “Enforce tendering declared vouchers in WIC CVV Sale Mode” parameter before tendering (and endorsing) those vouchers. If the parameter is enabled and an untendered, declared voucher amount match is identified, the voucher is accepted and endorsed. If a matching untendered voucher is not identified, the voucher is not accepted and the following warning message appears:



When the warning is cleared, the POS returns to tender mode.

**Note:**

Declared voucher enforcement at tender time is still performed regardless of the “Allow Split Tendering in a WIC CVV Transaction” parameter.

## 12860 – Expanded WIC Support for CFI Items (POS)

The Combination Food Instruments (CFI) for Infant Foods program allows up to two pounds of bananas to be substituted for jars of baby food jars under the WIC program. ISS45 now supports WIC CVV flagged items (in the ISS45 item file) to be purchased with WIC checks.

The WinPOS 7.1.3.0-150 installation contains a new WICCFI.DAT file with the PLUs that qualify under this program. When WinPOS initializes at the POS, if a WICCFI.DAT file resides (in the Program Files \ StoreLine \ WinPOS folder) it will be loaded in to the GEN\_TBL.QDX file.

When the POS is in WIC Sale Mode and an item is added to a ticket that has the WIC CVV flag set, the POS now checks if the item resides in the GEN\_TBL.QDX file. If the item exists in the file, it will be added to the ticket (as if the “Pmt by WIC” flag was checked).

**Note:**

It is the responsibility of the cashier to:

- Look at the WIC check to confirm the WIC CVV item is eligible.
- Ensure the quantity is accurate.
- Place the quantity of the item on the scale for weighing.

**Note:**

Items flagged for “Pmt by WIC CVV” that do not reside in the WICCFI.DAT file will continue to be prohibited from being added to a WIC Ticket.

# Technical Reference Appendix

## Out of Scope

Limitations of new features in this release are listed below (and were not addressed in development).

**Note:**

The limitations below are known as of this writing, and are provided in order to assist users and support personnel to plan, install and operate the capabilities described in this document. While StoreNext Retail Technologies LLC endeavors to ensure that this information is correct and fairly stated, no attempt is made here to catalog all limitations that could be construed or that may become known in the course of use or experience.

FSD Number	Enhancement	Out of Scope
12628	Enforced WIC CVV Declared Voucher Acceptance	<p>Enforced WIC CVV Declared Voucher Acceptance is available for the current release only (and will not be made compatible with previous ISS45 releases).</p> <p>Enforced WIC CVV Declared Voucher Acceptance development excluded:</p> <ol style="list-style-type: none"><li>1. Making the new “Enforce tendering declared vouchers in WIC CVV Sale Mode” parameter a Control Check in lieu of a hard warning.</li></ol>
12860	Expanded WIC Support for CFI Items	<p>Expanded WIC Support for CFI Items is available for the current release only (and will not be made compatible with previous ISS45 releases).</p> <p>Expanded WIC Support for CFI Items development excluded:</p> <ol style="list-style-type: none"><li>1. Support of the feature using Smart Card WIC.</li><li>2. Support of the feature using eWIC.</li><li>3. Allowing a WIC item to be sold as a WIC CVV item.</li></ol>

## Dependencies

Dependencies to utilize new features in this release are listed below.

FSD Number	Enhancement	Dependencies
12628	Enforced WIC CVV Declared Voucher Acceptance	<ol style="list-style-type: none"><li data-bbox="574 621 1383 688">1. The existing parameter "WIC CVV Prompt Options" must be set to either "Prompt for Amt" or "Prompt for Amt. &amp; Exp. Date".</li><li data-bbox="574 726 1383 793">2. The WIC CVV Preset Tender Key must be configured in the Menusys.mac file to enable WIC CVV Sale Mode functionality.</li></ol>
12860	Expanded WIC Support for CFI Items	<ol style="list-style-type: none"><li data-bbox="574 844 1383 911">1. Keyboard Function 1073 (WIC Ticket Key) programmed on the POS terminal.</li><li data-bbox="574 949 1383 974">2. WinPOS upgrade \ install that includes WICCFI.DAT.</li></ol>

## New TLOG Flag

The existing WIC CVV Information Transaction (0x70 0xFE) has a new “Declared Match” flag (in yellow below). For enforcing declared and tendered WIC CVV voucher amounts, the flag is set after a WIC CVV voucher is accepted and endorsed.

```
struct trs_info2_WIC_CVV_data_
{
    unsigned char opcode;           // 0 // TRANS_INFO2 0x70
    unsigned char function;        // 1 // TRANS_INFO2_WIC_CVV_INFO 0xFD
    short wic_cvv_index;           // 2
    long wic_cvv_amount;           // 4
    unsigned char cvv_issue_day;   // 8
    unsigned char cvv_issue_month; // 9
    unsigned short cvv_issue_year; // 10
    unsigned char cvv_exp_day;     // 12
    unsigned char cvv_exp_month;   // 13
    unsigned short cvv_exp_year;   // 14
    unsigned char cvv_tender_flag :1; // 16
    unsigned char cvv_declared_match :1; // 16
    unsigned char not_used :6;
    unsigned char nu[27];          // 17
    struct trans_tail_tail;        // 44
};
```

## New QDX File

A new POS QDX file is included in this release. The new T\_SECID.QDX file provides an indexed link between the customer secondary ID (Drivers License, Phone Number, etc.) and the primary customer number. The new QDX file provides the POS with a way to quickly lookup a customer by secondary ID. When the POS searches for a secondary ID, it first performs a direct lookup in T\_SECID.QDX and if a match is found it performs a direct lookup in T\_CUST.QDX based on the customer number.

### T\_SECID.QDX File Layout

The T\_SECID.QDX is File Number 102 with a Record Size of 21 and a Key Length of 10.

```
unsigned char  second_id[10];           //0   ASCII   Secondary ID
unsigned char  cust_no[10];            //10  BCD     Customer number
unsigned char  qdx_flag;                //20  NUM     Reserved for qdx
```

**Note:**

The T\_SECID.QDX file is maintained in parallel with the customer file and is populated by an initial POS cold start. Whenever the POS receives customer file maintenance, the POS will perform corresponding maintenance EOD on T\_SECID.QDX.

## New Q-DEX.PRM

New ISS45 v7 installations now include a Q-DEX.PRM file containing an entry for the T\_SECID.QDX file. For upgrades, the batch file "qsetup.bat" will add the entry to the store's existing Q-DEX.PRM file. A POS cold start is required after the batch file is executed.

**Note:**

The Q-DEX.PRM file contains the QDX file structure defined using QuickDex Definition (6-8-1).

```
unsigned char  second_id[10];           //0   ASCII   Secondary ID
unsigned char  cust_no[10];             //10  BCD     Customer number
unsigned char  qdx_flag;                 //20  NUM     Reserved for qdx
```

**Note:**

The T\_SECID.QDX file is maintained in parallel with the customer file and is populated by an initial POS cold start. Whenever the POS receives customer file maintenance, the POS will perform corresponding maintenance EOD on T\_SECID.QDX.

## New Q-DEX.PRM

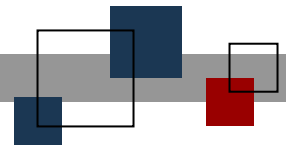
New ISS45 v7 installations now include a Q-DEX.PRM file containing an entry for the T\_SECID.QDX file. For upgrades, the batch file "qsetup.bat" will add the entry to the store's existing Q-DEX.PRM file. A POS cold start is required after the batch file is executed.

**Note:**

The Q-DEX.PRM file contains the QDX file structure defined using QuickDex Definition (6-8-1).







**© StoreNext Retail Technologies LLC 2010**

StoreNext Retail Technologies LLC endeavors to ensure that the information in this document is correct and fairly stated but does not accept liability for any error or omission.

The development of StoreNext products and services is continuous and published information may not be up to date. It is important to check the current position with StoreNext. This document is not part of a contract or license save insofar as may be expressly agreed.