



-  *ISS45 Version 7*
-  *Installation Guide*
-  *7.1.4.0-050*
- 
- 

ISS45 V7 Installation Guide

Date of Issue	Product Identification Number	Part Number	Brief Description
June 1997	45001/021	80329720	Initial Release
February 1999	45001/021	7.6 CD-ROM 80602987	With Version 7.6
August 2000	45001/021	89000064	Version 7.7
August 2008	45001/021	89000464	Version 7.1.3.0
November 2010	45001/021	89000603	Version 7.1.4.0
January 2011	45001/021	89000607	Version 7.1.4.0 (Upd)

**© Copyright StoreNext Retail Technologies LLC 1995-2011
All rights reserved**

This publication is protected by federal copyright law. This document and its contents are the proprietary, confidential information and property of StoreNext.. Unauthorized disclosure, reproduction, distribution or use of this document and/or its contents in any form is strictly prohibited. No part of this publication may be reproduced or transmitted into any human or computer language in any form or by any means, stored in a retrieval system, transmitted, redistributed, translated or disclosed to third parties, or de-compiled in any way including, but not limited to, photocopy, photograph, electronic, mechanical, magnetic or manual without the express written permission of StoreNext Retail Technologies LLC or its licensors, if any. This document, notwithstanding the above, may be distributed in electronic or printed form to personnel who are employed by either (1) a StoreNext customer of the subject system of this document or (2) personnel from an authorized StoreNext dealer of the subject system of this document. All copies, so distributed and/or so authorized, shall contain a full copy of this copyright notice.

StoreNext Retail Technologies LLC has prepared this manual for use by users, authorized third parties and personnel of StoreNext Retail Technologies LLC as a guide to the proper installation, operation, customization and/or maintenance of StoreNext Retail Technologies LLC equipment and software. The drawings and specifications contained herein are the property of StoreNext Retail Technologies LLC and/or its licensors.

StoreNext Retail Technologies LLC endeavors to ensure that the information in this document is correct and fairly stated but does not accept liability for any error or omission. StoreNext Retail Technologies LLC makes no representation or warranties with respect to the contents hereof, and specifically disclaims any implied warranties of merchantability or fitness for a particular purpose or non-infringement. No commitments by StoreNext or its suppliers are made from this documentation which is provided for information only.

Development of StoreNext products and documentation is continuous: StoreNext Retail Technologies LLC reserves the right to revise this publication and to make changes from time to time in the contents hereof or in the products herein described or discussed without notice and without any obligation of StoreNext Retail Technologies LLC to notify any person or organization of such revision or changes. Information published in this document will likely become obsolete over time and it is recommended that users regularly check for updates and newer versions.

The trademarks StoreNext and Retailix are registered trademarks or trademarks of Retailix; all other trademarks or registered trademarks are the property of their respective owners. Third-party products, services, or company names referenced in this document may be trademarked or copyrighted by their respective owners, and are for identification purposes only.

Copyrights, trademarks and license agreements shall be governed and construed in accordance with the laws of the State of Texas and the Federal Arbitration Act, and shall benefit Retailix, its successors, and assigns.

Address comments and corrections to:

StoreNext Retail Technologies LLC
Software Program Director
6100 Tennyson Parkway, Suite 130
Plano, Texas 75024

These instructions will help you load the ISS45 software. The below chart will help you understand which operating system is compatible with versions of ISS45 V7.

Note that **EOL** designates “End of Life”. StoreNext no longer certifies or accepts Support Incidents on the EOL flagged Operating systems of applications below.

ISS45 Controller Service Matrix						
Operating System:	DOS EOL	Windows NT 4.0 Desktop EOL	Windows NT Server EOL	Windows 2000 Professional EOL	Windows Server	Windows XP Professional
ISS45 V7.6: EOL	Yes	Yes		Yes		
ISS45 V7.7: EOL	Yes	Yes		Yes	Windows 2000 Server EOL	
ISS45 V7.8: EOL	Yes	Yes		Yes	Windows 2000 Server EOL	
ISS45 V7.0.8.3: EOL		SP3		SP4	Windows 2000 Server EOL	
ISS45 V7.1.0.0: EOL		SP3		SP4	Windows 2000 Server EOL	SP2 on MFS1/MFS2 (best 7.1.0.0-090+)
ISS45 V7.1.1.0+:					Windows 2000 Server SP4 EOL	SP2 on MFS1/MFS2
ISS45 V7.1.2.1+:					Windows 2000 Server SP4 EOL	SP3 on MFS1/MFS2
ISS45 V7.1.3.0+:						SP3 on MFS1/MFS2

Table of Contents

Table of Contents.....	4
Before Installing ISS45 v7.....	1
Windows XP Pro Setup Instructions	1
Shared printer setup.....	3
Set the display properties.....	3
Turn off Windows Messenger	3
(Optional) Turn off Windows automatic updating	4
(Optional) Turn off Security Center alerts at boot time.....	4
Installing ISS45 Version 7 on Windows XP Professional.....	5
Uninstalling ISS45.....	26
Recovering ISS45	30

Before Installing ISS45 v7

Please complete the following section to configure Windows XP Professional prior to installing ISS45 v7.

Note:

Please confirm that Service Pack 3 of Windows XP Professional has first been installed on the MFS.

Windows XP Pro Setup Instructions

- 1 Click on START -> SETTINGS-> CONTROL PANEL->USER ACCOUNTS.
- 2 Under PICK A TASK, select "CHANGE THE WAY THE USERS LOG ON AND OFF"

Note:

A message may appear regarding Fast User Switching. Acknowledge the message by pressing OK.

- 3 Uncheck the box next to "Use the Welcome screen" and close the User Account screen.

Note:

If this is not performed the administrator will not appear on the XP screen. This also provides the traditional <CTRL><ALT> logon.

- 4 Sharing in XP defaults to a guest share. To change this (for traditional sharing), click on START -> SETTINGS->CONTROL PANEL -> ADMINISTRATIVE TOOLS-> LOCAL SECURITY POLICY -> LOCAL POLICIES -> SECURITY OPTIONS.

Note:

If using Category View, choose "Performance and Maintenance" prior to "Administrative Tools".

- 5 Right click on "Network access: Sharing and security model for local accounts" and then PROPERTIES. Select "Classic - local users authenticate as themselves" from the drop-down menu.
- 6 Apply changes and exit.
- 7 Turn off the firewall after installing Windows XP Service Pack 2. Click START-> SETTINGS->CONTROL PANEL->WINDOWS FIREWALL.

Note:

If using Category View, choose "Security Center" prior to "Windows Firewall".

- 8 Click on the GENERAL tab.

- 9 Select OFF and click on OK and exit any open screens.
- 10 Turn off the default screen saver for Windows XP Professional. Click START-> SETTINGS->CONTROL PANEL->DISPLAY.

Note:

If using Category View, choose "Appearance and Themes" prior to "Display".

- 11 Click the SCREEN SAVER tab.
- 12 At the SCREEN SAVER box, click on the down arrow to access the dropdown menu.
- 13 Select NONE and click APPLY to save the settings.
- 14 Exit any open screens.
- 15 Turn off the default "Automatic Time Synchronizing". At the desktop, right-click on the time (at the far right side of the task bar).
- 16 Select the "Internet Time" tab.
- 17 Un-check the box next to "Automatically synchronized with an Internet time server". Apply the change and exit.
- 18 Enable Automatic Logon. Click on START-> RUN, type REGEDIT and then click OK.
- 19 Go to:
HKEY_LOCAL_MACHINE\SOFTWARE\Microsoft\WindowsNT\Current Version\WinLogon.
- 20 Right click on DefaultUserName. Select MODIFY, type "Administrator".
- 21 Click on EDIT, click NEW, click STRING VALUE.
- 22 Type "DefaultPassword" as the value name and press ENTER.
- 23 Right click on DefaultPassword, select MODIFY, type your password in the VALUE DATA box.
- 24 Click on EDIT, click NEW, click STRING VALUE.
- 25 Type "AutoAdminLogon" as the value name and press ENTER.
- 26 Right click on AutoAdminLogon, select MODIFY, enter 1 in the VALUE DATA Box.
- 27 Click on EDIT, click NEW, click STRING VALUE.
- 28 Type ForceAutoLogon as the value name and press ENTER.
- 29 Right click on ForceAutoLogon, select MODIFY, enter 1 in the VALUE DATA Box.
- 30 Exit REGEDIT and reboot the server.

Shared printer setup

- 1 On any MFS or LFS servers that are using a shared printer click on START-> RUN.
- 2 Type CMD and then click on OK.
- 3 At the command prompt type the following:
Net use lpt1: \\<server>\<shared_printer_name> /persistent:yes
- 4 For example, if the printer is physically located on MFS1 and the share name is LASER1 this line would be typed as listed below on MFS2 and any LFS:
Net use lpt1: \\mfs1\laser1 /persistent:yes

Set the display properties


- 1 Click START-> SETTINGS->CONTROL PANEL-> DISPLAY.

Note:

If using Category View, choose "Appearance and Themes" prior to "Display".

- 2 Click the SETTINGS tab.
- 3 Ensure that the screen resolution is 800X600 pixels and the color quality is Medium (16 bit).

Turn off Windows Messenger

- 1 Double click on the Windows Messenger icon  in the lower right corner of the screen next to the time.
- 2 Click on TOOLS from the Windows Messenger Toolbar and then click on OPTIONS.
- 3 Click on the PREFERENCES tab.
- 4 Uncheck all boxes in both the GENERAL and ALERTS sections.
- 5 Click OK at the bottom of the screen to save the changes.
- 6 Exit any open screens.

(Optional) Turn off Windows automatic updating

- 1 Go to START-> SETTINGS->CONTROL PANEL-> SYSTEM.

Note:

If using Category View, choose "Performance and Maintenance" prior to "System".

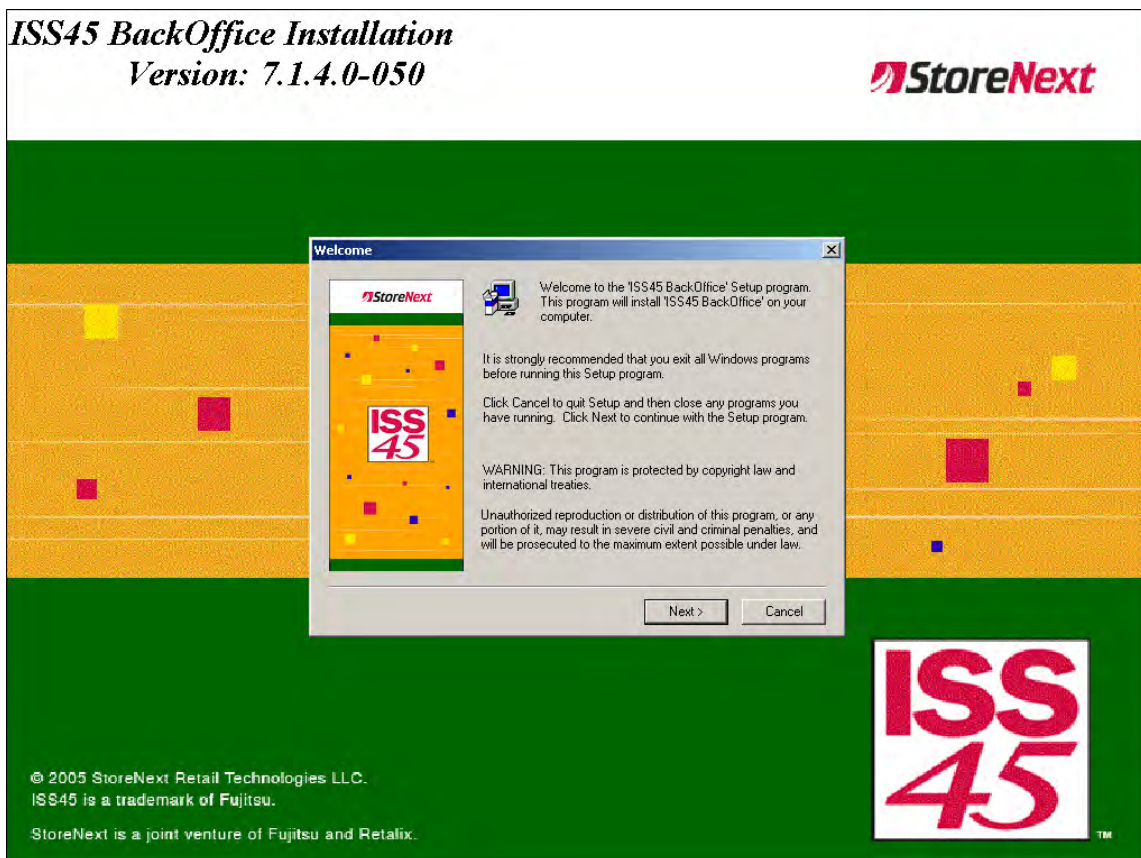
- 2 Click on the "Automatic Updates" tab.
- 3 Click "Turn off Automatic Updates"
- 4 Apply the change, click on OK and exit.

(Optional) Turn off Security Center alerts at boot time

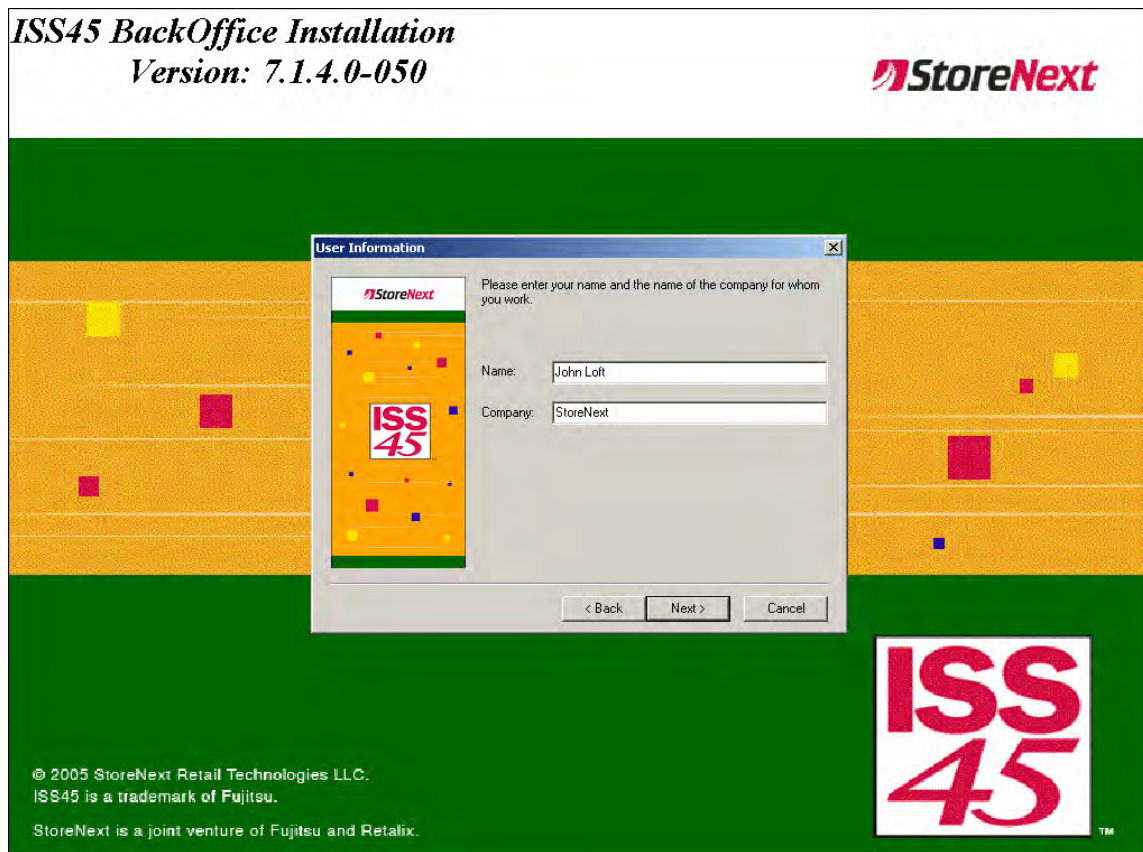
- 1 Go to START-> SETTINGS->CONTROL PANEL-> SECURITY CENTER.
- 2 Click on the "Change the way Security Center alerts me" (in the Resources section).
- 3 Uncheck all the Alert Setting boxes.
- 4 Click OK and exit.

Installing ISS45 Version 7 on Windows XP Professional

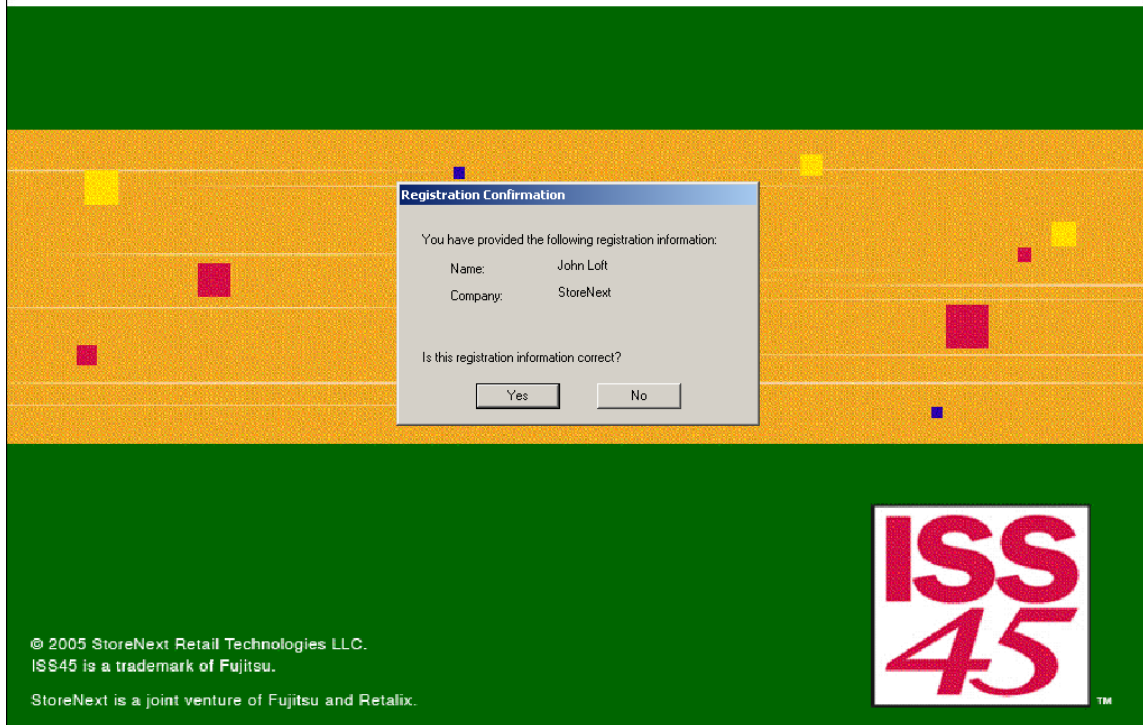
- 1 Insert the Version 7 CD into the computer's CD ROM Drive. If Auto Run is enabled and brings up a window, close it and follow directions below.
- 2 From the computer desktop, click on **Start->Run->Browse**.
- 3 Browse to the CD Rom and double click on the BackOffice folder
- 4 Double click on the Disk 1 folder.
- 5 Double click on SETUP.EXE.
- 6 Press **OK** to start the installation.
- 7 At the Welcome screen, click on **Next**.



- At the User Information screen, type in information and click **Next**.



- At the Registration Confirmation screen, click on **Yes**.



- 10 At the BackOffice Type screen, choose the Type of MFS this will be. Dual servers are MFS1 or MFS2. Single System would be Standalone. If this is an extra PC (LFS), mark it appropriately and click on **Next**.

ISS45 BackOffice Installation
Version: 7.1.4.0-050



The dialog box titled "BackOffice Type" is centered on the screen. It features the StoreNext logo and the ISS45 logo. The text inside reads: "Select one of the following 'BackOffice' types: Note: Server=Mfs1/MB, Workstation=Mfs2/Lfs3-10." Below this is a list of options with checkboxes and sizes:

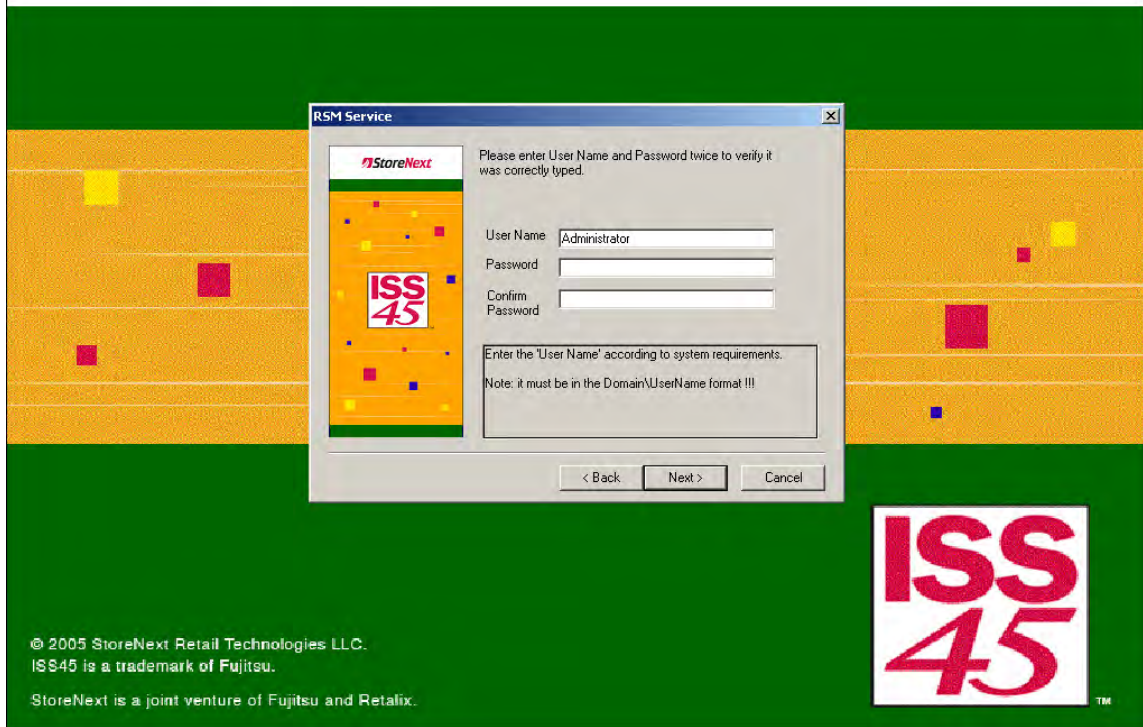
BackOffice Type	Size
<input checked="" type="checkbox"/> Mfs1	0.0 MB
<input type="checkbox"/> Mfs2	0.0 MB
<input type="checkbox"/> Stand alone (MFS1 only)	0.0 MB
<input type="checkbox"/> Lfs3	0.0 MB
<input type="checkbox"/> Lfs4	0.0 MB
<input type="checkbox"/> Lfs5	0.0 MB
<input type="checkbox"/> Lfs6	0.0 MB
<input type="checkbox"/> Lfs7	0.0 MB
<input type="checkbox"/> Lfs8	0.0 MB
<input type="checkbox"/> Lfs9	0.0 MB
<input type="checkbox"/> Lfs10	0.0 MB

At the bottom of the dialog box are three buttons: "< Back", "Next >", and "Cancel".

© 2005 StoreNext Retail Technologies LLC.
ISS45 is a trademark of Fujitsu.
StoreNext is a joint venture of Fujitsu and Retailix.

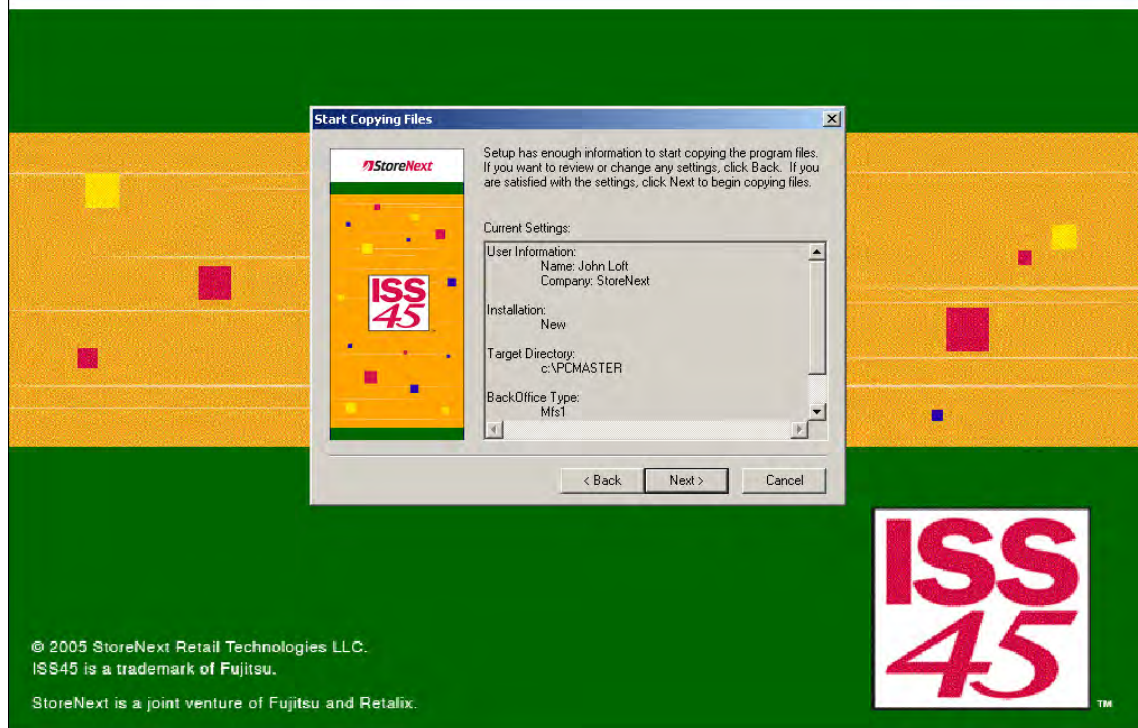
- 11 At the RSM Service screen, enter the User and Password of the computer on which you are loading ISS45.

ISS45 BackOffice Installation
Version: 7.1.4.0-050



- 12 At the next Start Copying Files screen, confirm the options you chose and click on **Next**.

ISS45 BackOffice Installation
Version: 7.1.4.0-050

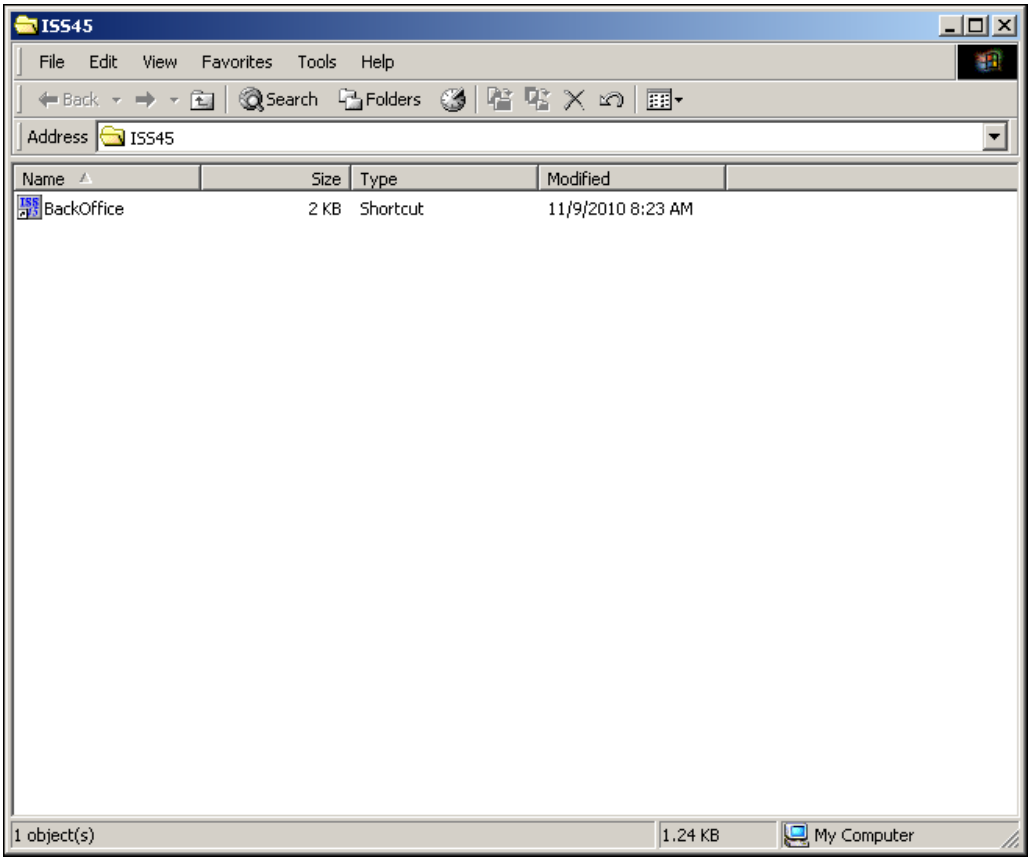


- 13 The installation will begin. This will take a few minutes. Do not turn off the computer during this process.

ISS45 BackOffice Installation
Version: 7.1.4.0-050



14 The ISS45 BackOffice Icon will be added to the Start Up folder.



15 The HOSTS file will show on the screen. You must change the IP addresses of the MFS, POS and Subnet Mask. Example below:

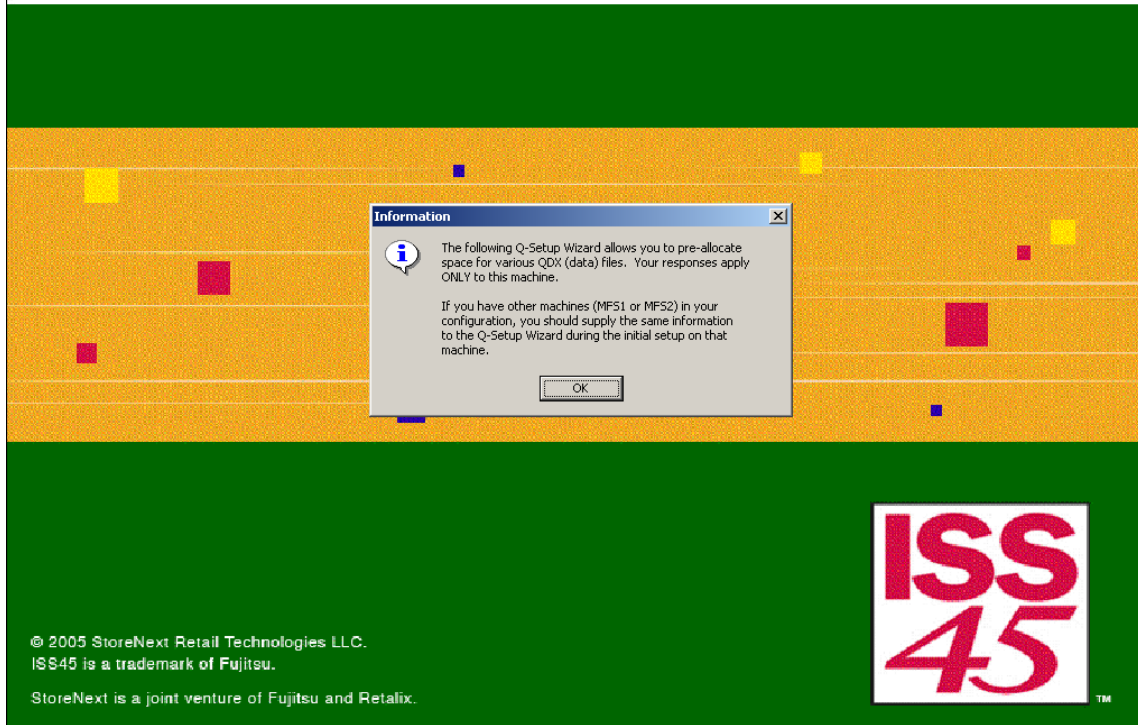
```
HOSTS - Notepad
File Edit Format View Help
# The IP address and the host name should be separated by at least one
# space.
#
# Additionally, comments (such as these) may be inserted on individual
# lines or following the machine name denoted by a '#' symbol.
#
# For example:
#
#       102.54.94.97      rhino.acme.com          # source server
#       38.25.63.10     x.acme.com              # x client host
127.0.0.1      localhost

# The following lines are inserted by a POS installation !
# Set the a.b.c values according to the value
# in the ControlPannel->Network Applet !
129.103.2.1    MFS1
129.103.2.2    MFS2
129.103.2.3    LFS3
129.103.2.10   LFS10
129.103.2.11   POS1

255.255.255.0  SUBNETMASK
```

- 16 The next set of screens will allow you to change the sizes of some of the QDX files. Click **OK** to continue to the next screen.

ISS45 BackOffice Installation
Version: 7.1.4.0-050

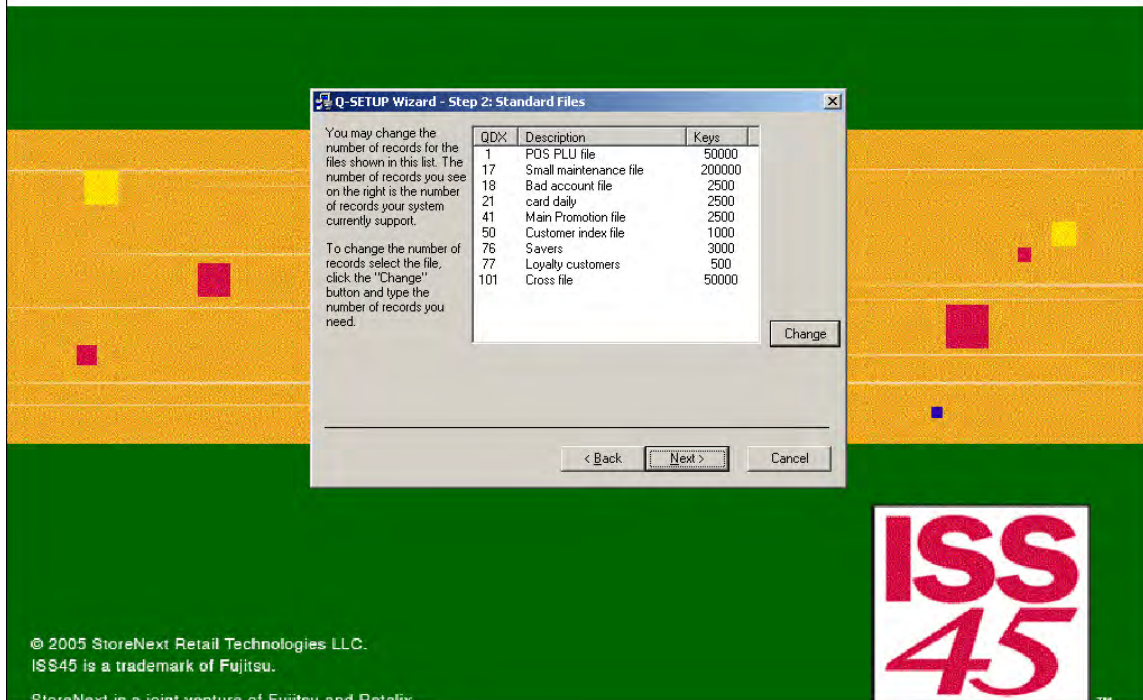


17 At the Setup Wizard Step 1 screen, click **Next**.

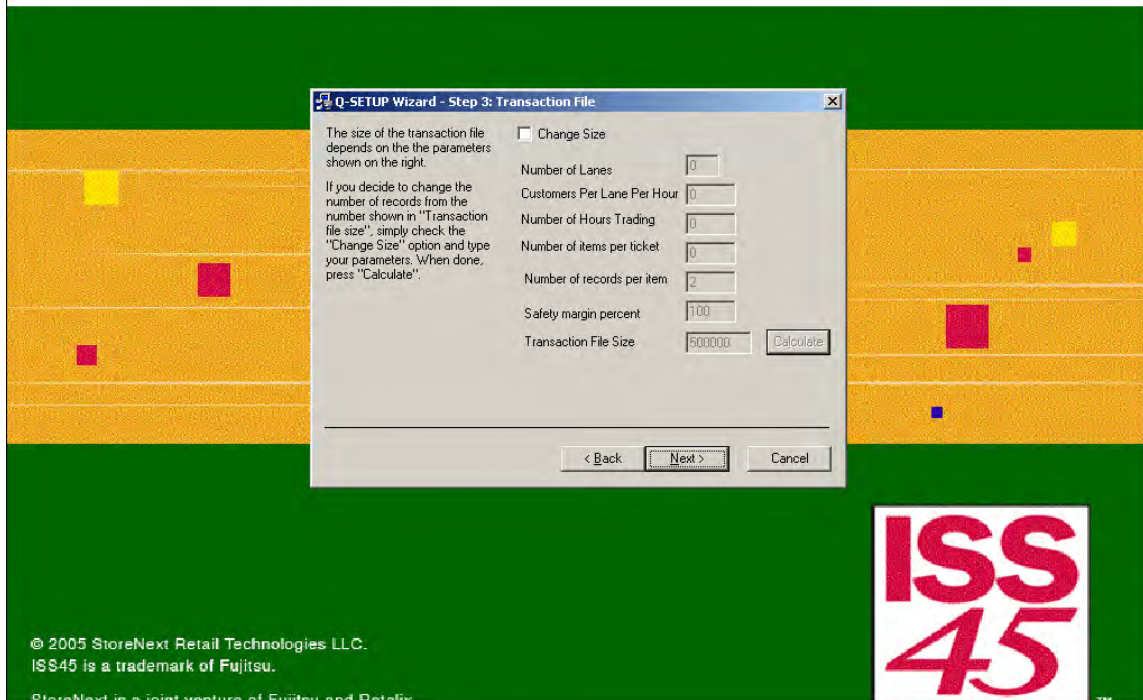
ISS45 BackOffice Installation
Version: 7.1.4.0-050



- 18 At the Setup Wizard Step 2 screen, click Next to accept the Default Sizes or click Change to make changes. If you do not wish to make changes at this time, you can change the size of these files anytime you like via the ISS45 program.



- 19 At the Setup Wizard Step 3 screen, click **Next** to continue accepting defaults or click **Change** to make changes.



20 On the Setup Wizard Step 4 screen, click **Next** to continue.

ISS45 BackOffice Installation
Version: 7.1.4.0-050



This list shows for each file, the current setting and the number of keys you requested. Press "Next" to write your changes.

If your system is running now (services started), please stop and start the service.

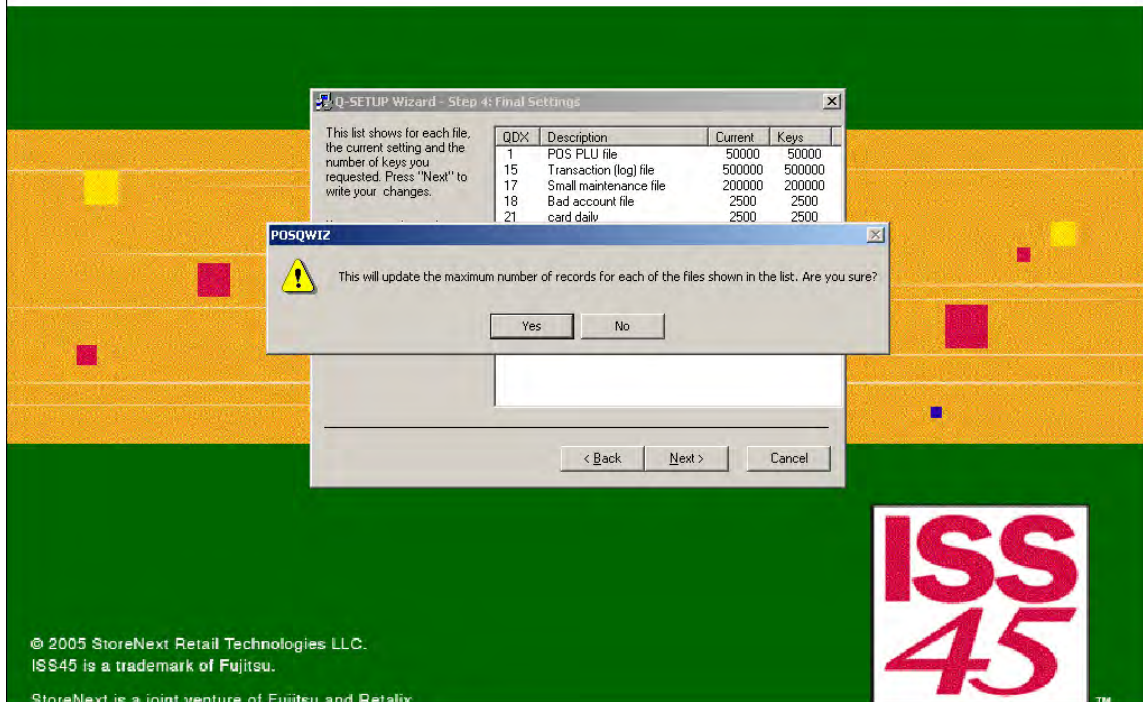
ODX	Description	Current	Keys
1	POS PLU file	50000	50000
15	Transaction (log) file	500000	500000
17	Small maintenance file	200000	200000
18	Bad account file	2500	2500
21	card daily	2500	2500
41	Main Promotion file	2500	2500
50	Customer index file	1000	1000
76	Savers	3000	3000
77	Loyalty customers	500	500
101	Cross file	50000	50000

< Back Next > Cancel

© 2005 StoreNext Retail Technologies LLC.
ISS45 is a trademark of Fujitsu.
StoreNext is a joint venture of Fujitsu and Retailv

- 21 At the next screen, click **Yes** to accept defaults or changes that you made.

ISS45 BackOffice Installation
Version: 7.1.4.0-050



22 The final step is installing the Hasp driver, please wait.

ISS45 BackOffice Installation
Version: 7.1.4.0-050

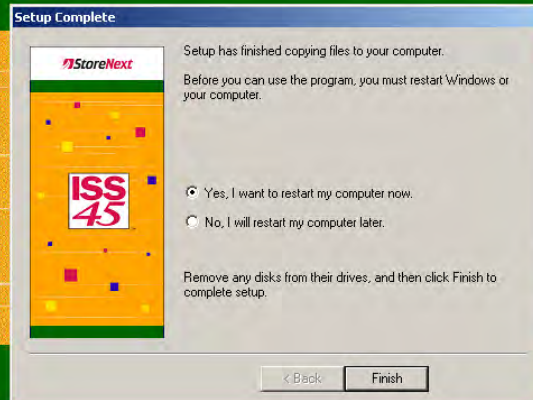


23 At the final screen, choose **Yes** to reboot and click **Finish**.

Note:

If you are installing into an existing site for recovery purposes, please click **NO** here and skip to page 30.

ISS45 BackOffice Installation
Version: 7.1.4.0-050

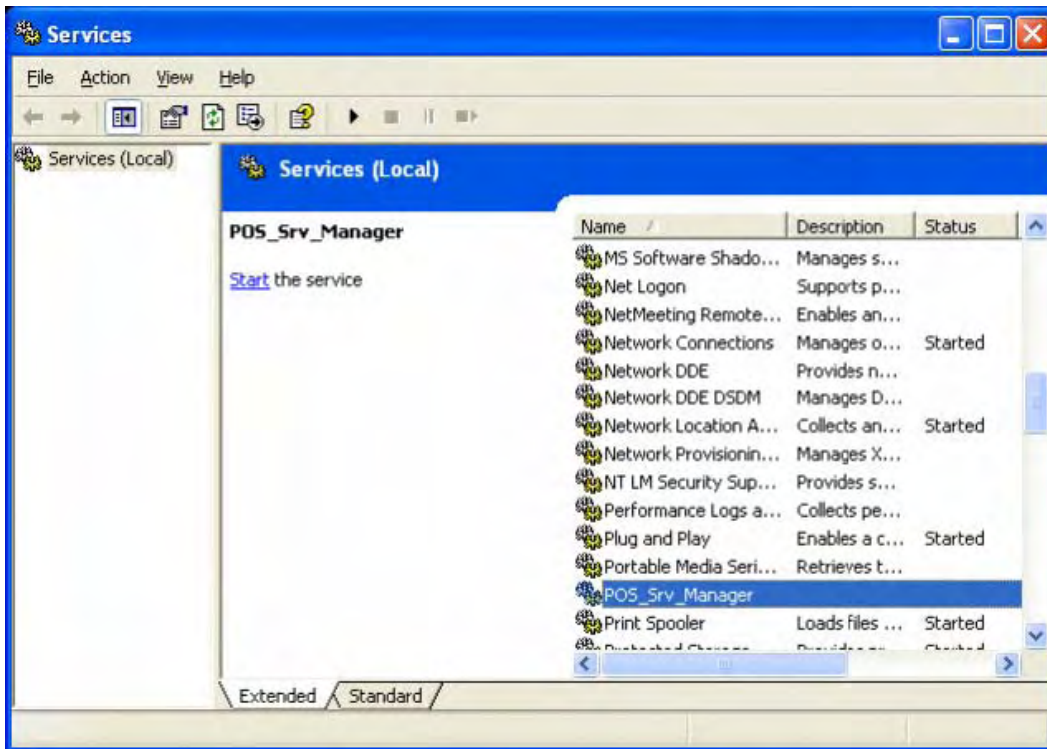


© 2005 StoreNext Retail Technologies LLC.
ISS45 is a trademark of Fujitsu.

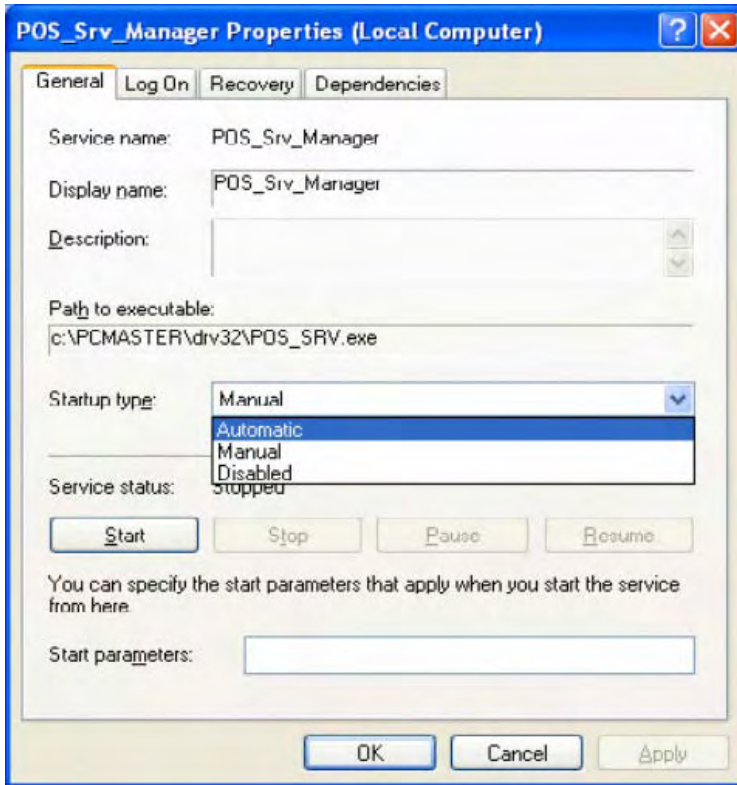
StoreNext is a joint venture of Fujitsu and Retailix.



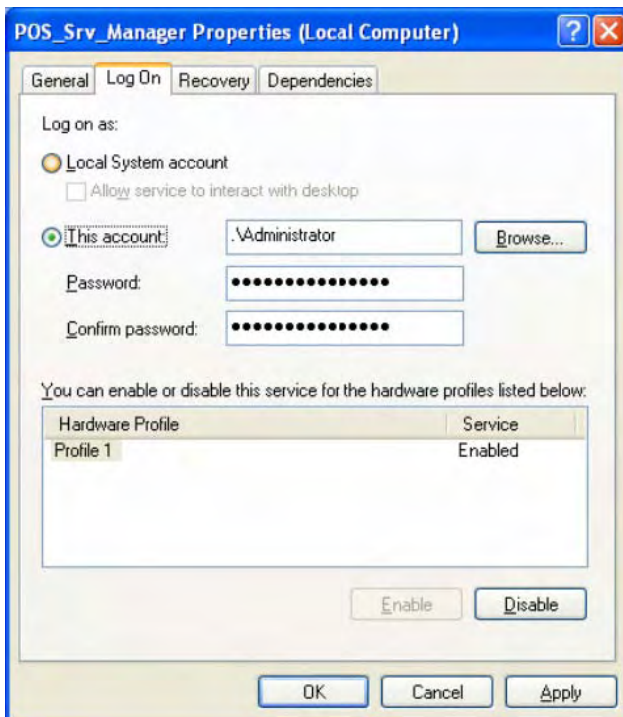
- 24 After the reboot, the POS Services will need to be setup. Click on **Next** to do this.
- 25 The Services window will open. You must scroll down to POS_SRV_MANAGER and double click on this.



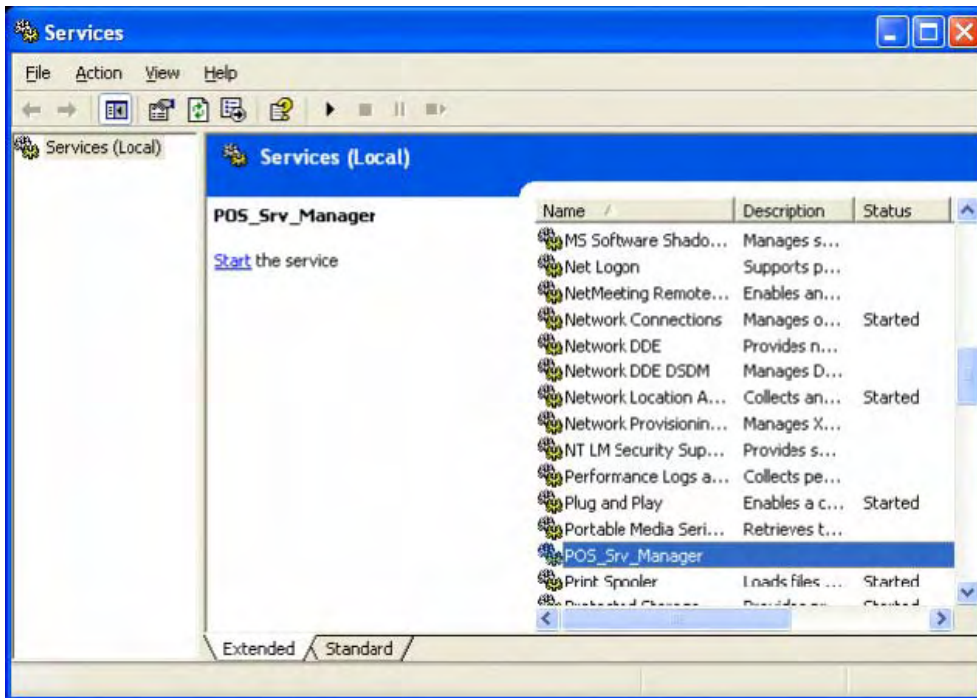
- 26 Services will be set to Manual and you need to change that to Automatic. What this does is, each time the computer is rebooted, ISS45 will automatically start up.



- 27 Click on the **Log On** tab to verify Administrator and password. If you wish to run ISS45 as a Local System account, select this and click **OK**. If for some reason the computer is rebooted and logged on as a different user, ISS45 will not start.



- 28 Once you OK the Log On screen, exit the Services screen by clicking the **X** in the top right corner.



- 29 At this time, the ISS45 services will now load and your system will become operational.

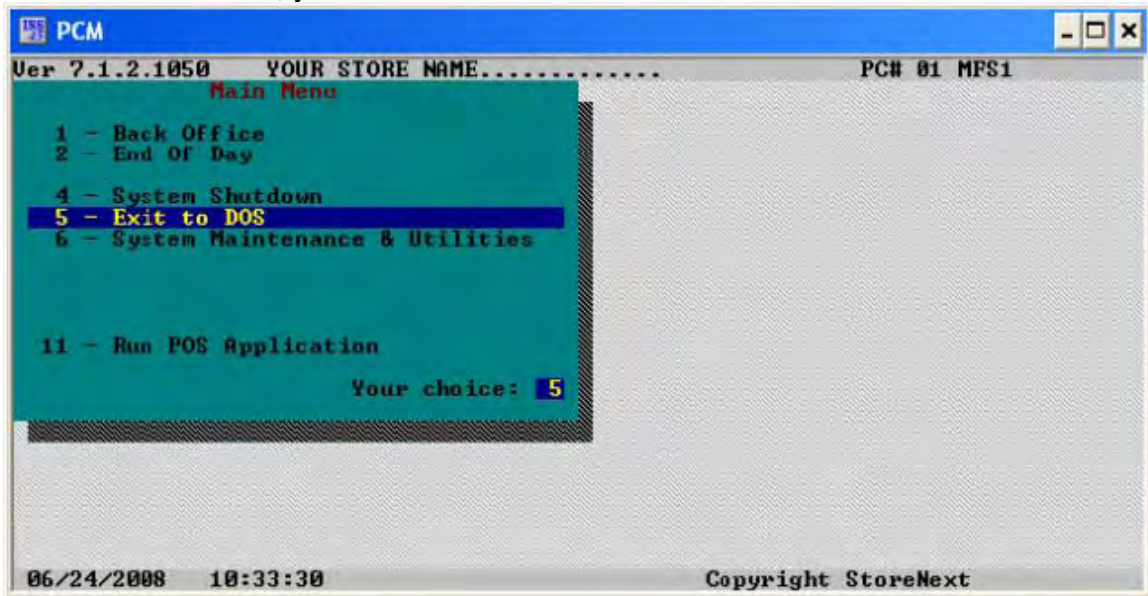
Note:

You can bring up the Services Monitoring screen to view the start up process. Once you see End of SRVSTART.BAT, you can double-click the Back Office Icon on the Desktop to open the ISS45 application.

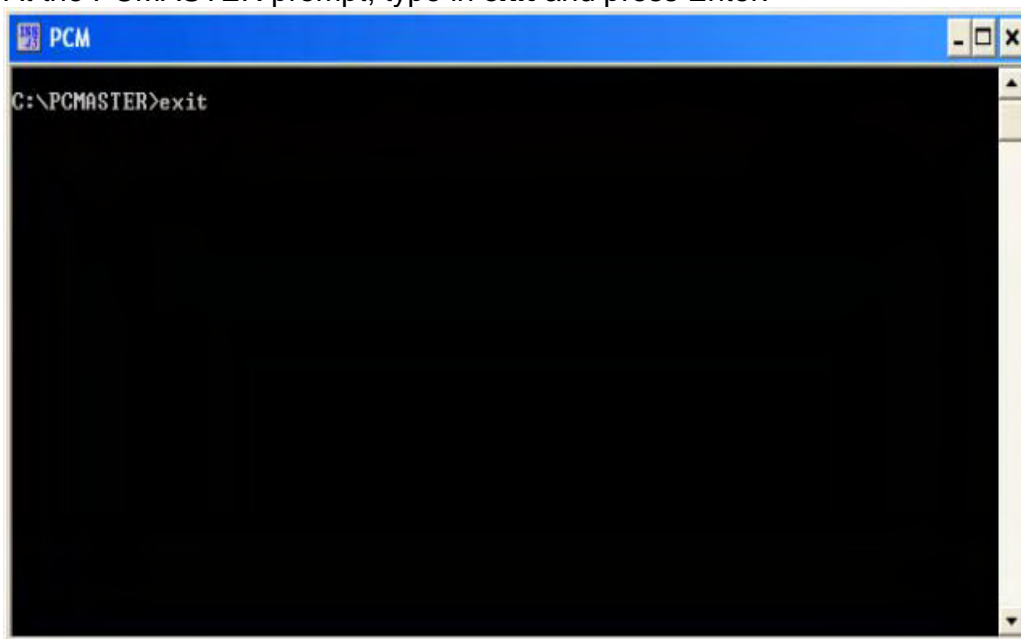
Uninstalling ISS45

To uninstall the ISS45 application, follow the steps below. IF you follow these steps, the application will uninstall successfully every single time.

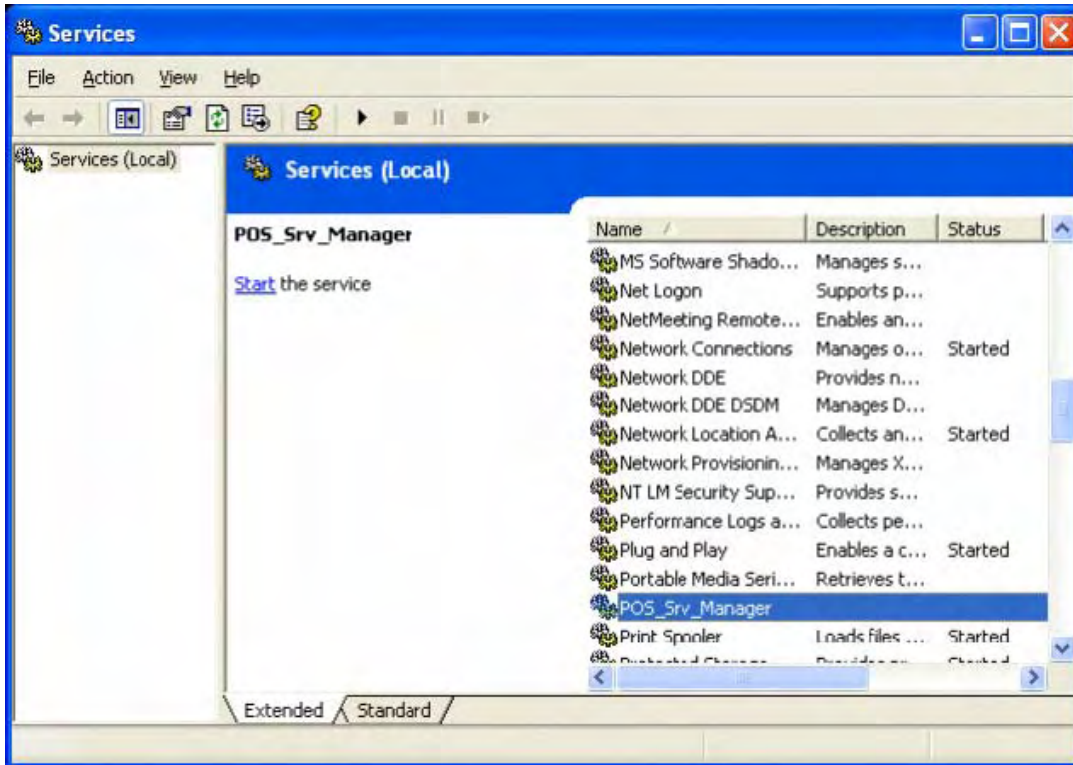
- 1 From the ISS45 Main Menu, choose # 5 Exit to DOS
- 2 Press Enter on YES, you are sure.



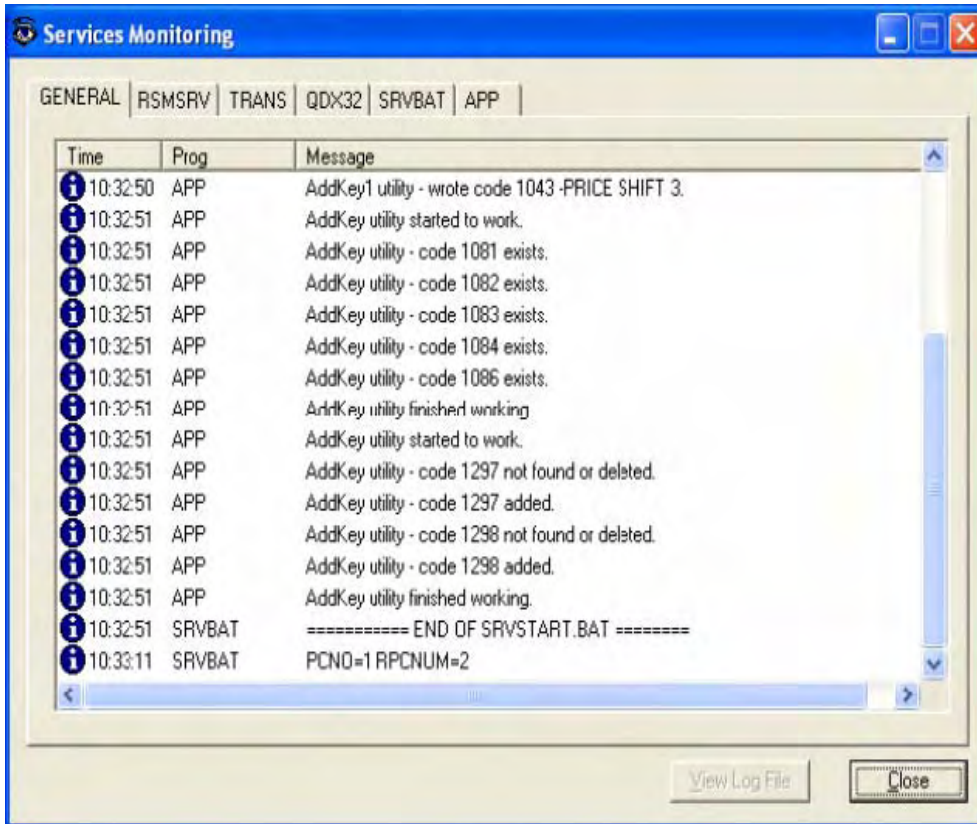
- 3 At the PCMASTER prompt, type in **exit** and press Enter.



- 4 You will need to STOP the POS_SRV_MANAGER and close the Services Monitoring window. From the Desktop, go to Control Panel, Open Administrative Tools, open Services. Scroll to POS_SRV_MANAGER, highlight this and RIGHT click and choose STOP.



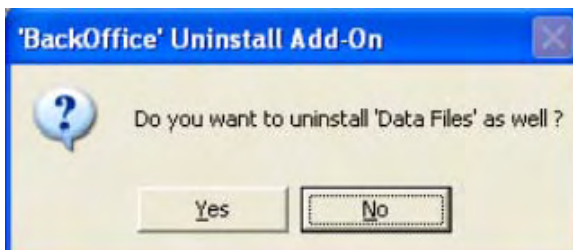
- 5 After the Services have stopped, close this screen. You should see the Services Monitoring in the task bar at the bottom. Open this window.



- Click the X in the top right corner. You will be prompted for a password to close this window.



- From the Desktop, go back to Control Panel to Add/Remove Programs.
- Remove the ISS45 Back Office Application. You will be prompted to Remove Data Files, click on Yes.



- 9 After ISS45 has been uninstalled from the computer, verify that the PCMASTER folder is gone from the root drive, empty the recycle bin and reboot.

You have successfully uninstalled the ISS45 program.

Recovering ISS45

If you are uninstalling ISS45 because of problems and you wish to reinstall the application, you should save off some files that will be important to the customer.

- The **PCMASTER\BAK** folder
- The **PCMASTER\FILES** folder
- The **PCMASTER\HISTORY** folder

Note:

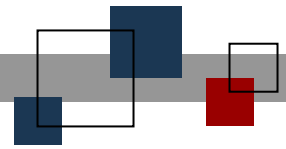
These three folders contain history, reports, transaction files, etc.

The PCMASTER\QDX folder is the set of QDX files that run the ISS45 program. You will most likely want to save these as well.

Once you install the program again, there are 2 files you **MUST** copy into the PCMASTER folder so that file sizes will remain the same and the POST will recognize the server. **BOTH** of these files go into the PCMASTER folder and may be read only. Take necessary steps to copy read only files into the folder.

- **q-dex.prm** – file sizes
- **transver.prm** – transaction version number. POST need to see this in order to prevent a refresh at the lane.

Once you have ISS45 loaded, choose **NO** to not reboot at that time. Copy in the q-dex.prm, the transver.prm and copy the necessary folders back into place. Reboot the computer and ISS45 will come back up as it was before.



© StoreNext Retail Technologies LLC 2011

StoreNext Retail Technologies LLC endeavors to ensure that the information in this document is correct and fairly stated but does not accept liability for any error or omission.

The development of StoreNext products and services is continuous and published information may not be up to date. It is important to check the current position with StoreNext. This document is not part of a contract or license save insofar as may be expressly agreed.