






The logo for ISS 45, consisting of the letters 'ISS' in a large, bold, black serif font above the number '45' in a similar font, all enclosed within a thin black rectangular border.

-  *ISS45 Version 7.1.4.0-050*
-  *Release Notes & What's New*
- 
- 
- 

ISS45 V7 Release Notes & What's New

Date of Issue	Product Identification Number	Part Number	Brief Description
Earlier Releases: 89000408, 89000444, 89000444B, 89000516			
September 2009	45001/080	89000533	7.1.3.0-090
May 2010	45001/080	89000564	7.1.3.0-140
June 2010	45001/080	89000564	7.1.3.0-150
June 2010	45001/080	89000572	7.1.3.0-160
August 2010	45001/080	89000588	7.1.3.0-170
November 2010	45001/080	89000598	7.1.4.0-050 Release
November 2010	45001/080	89000605	7.1.4.0-050 Updated
December 2010	45001/080	89000606	7.1.4.0-050 Updated

**© Copyright StoreNext Retail Technologies LLC 1995-2010
All rights reserved**

This publication is protected by federal copyright law. No part of this publication may be reproduced or transmitted into any human or computer language in any form or by any means, stored in a retrieval system, transmitted, redistributed, translated or disclosed to third parties, or de-compiled in any way including, but not limited to, photocopy, photograph, electronic, mechanical, magnetic or manual without the express written permission of StoreNext Retail Technologies LLC or its licensors, if any. This document, notwithstanding the above, may be distributed in electronic or printed form to personnel who are employed by either (1) a StoreNext customer of the subject system of this document or (2) personnel from an authorized StoreNext dealer of the subject system of this document. All copies, so distributed and/or so authorized, shall contain a full copy of this copyright notice.

StoreNext Retail Technologies LLC endeavors to ensure that the information in this document is correct and fairly stated but does not accept liability for any error or omission. StoreNext Retail Technologies LLC makes no representation or warranties with respect to the contents hereof, and specifically disclaims any implied warranties of merchantability or fitness for a particular purpose or non-infringement. No commitments by StoreNext or its suppliers are made from this documentation which is provided for information only.

Development of StoreNext products and documentation is continuous: StoreNext Retail Technologies LLC reserves the right to revise this publication and to make changes from time to time in the contents hereof or in the products herein described or discussed without notice and without any obligation of StoreNext Retail Technologies LLC to notify any person or organization of such revision or changes. Information published in this document will likely become obsolete over time and it is recommended that users regularly check for updates and newer versions.

StoreNext Retail Technologies LLC has prepared this manual for use by users, authorized third parties and personnel of StoreNext Retail Technologies LLC as a guide to the proper installation, operation, customization and/or maintenance of StoreNext Retail Technologies LLC equipment and software. The drawings and specifications contained herein are the property of StoreNext Retail Technologies LLC and/or its licensors.

Third-party products, services, or company names referenced in this document may be trademarked or copyrighted by their respective owners, and are for identification purposes only.

Copyrights, trademarks and license agreements shall be governed and construed in accordance with the laws of the State of Texas and the Federal Arbitration Act, and shall benefit Retailix, its successors, and assigns.

Address comments and corrections to:

StoreNext Retail Technologies LLC
Software Program Director
6100 Tennyson Parkway
Suite 130
Plano, Texas 75024

Table of Contents

Table of Contents	i
Introduction	1
12629 – Online WIC EBT Support (BO/POS)	2
Back Office.....	2
POS.....	11
12720 – PLU Group #0 Prevention (BO)	23
13144 – Expanded Control Check for Cancel Item Functionality (POS).....	24
Other Enhancements	25
POS Installation Modification	26
Technical Reference Appendix	27
Release Database Changes	27
Modified QDX Files	30
Out of Scope	36
Dependencies	38

Introduction

Enhancements were recently made to the StoreNext ISS45 system. The changes are reflected in the accompanying ISS45 7.1.4.0-050 software. The Change Request Document (CRD) number assigned to each enhancement is listed in the description heading.

The Change Request Document (CRD) number assigned to each enhancement is listed in the description heading. Following the change description is an abbreviation (or combination thereof) of the ISS45 area affected:

(BO) – Back Office

(POS) – WinPOS

(Sys) – System / Services

These enhancements are explained in detail in the following pages and are included in the latest Office Users Guide, WinPOS User Guide or Office Administrator's Reference. If you have any questions regarding this release, please contact StoreNext Support.

12629 – Online WIC EBT Support (BO/POS)

Online WIC EBT is replacing both traditional paper-based WIC tenders (WIC checks, WIC CVV vouchers) and Smart Card WIC EBT in several states. Similar to other PIN-based EFT tenders, ISS45 now supports Online WIC EBT cards issued from multiple state agencies.

ISS45 Online WIC EBT uses MTXEPS ServerEPS to query an online database that has the customer's latest WIC prescription information. This allows retailers to receive real time approval for claims (eliminating paper processing) making WIC transactions more seamless at the POS.

Included in this development is a mechanism for retailers to implement Least Expensive Brand (LEBs) - store brands that are approved by the state WIC agency and included in the Approved Product List (APL).

Note:

Online WIC EBT is not controlled by the HASP plug (as Smart Card WIC EBT is using Software Flag ID #4).

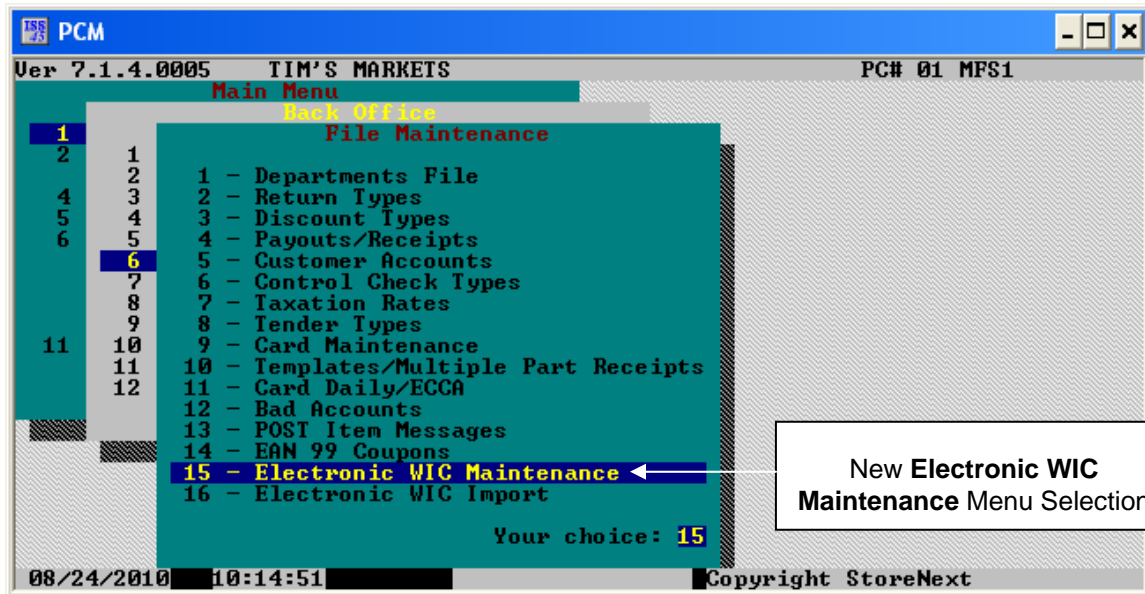
Note:

Online WIC EBT requires StoreNext Connected Payment Interface with MTX OpenEPS payment system version V826.2.

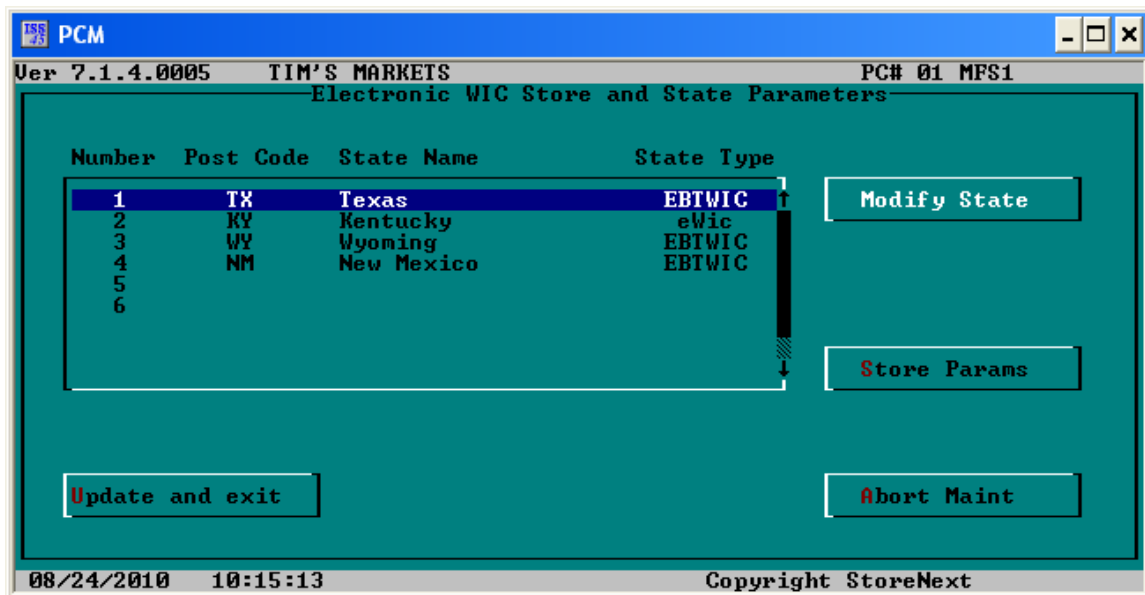
Back Office

New Electronic WIC Maintenance

Electronic WIC Maintenance (1-6-15) has been added to the File Maintenance Menu in this release to facilitate configuring states for Online WIC EBT and Smart Card WIC EBT.



When selected, the Electronic WIC Store and State Parameters screen displays a list of previously configured states (up to a maximum of six states).



To add and configure a state, highlight an unused row and select **Modify State**. The Electronic WIC State Maintenance Screen displays.

```

PCM
-----
Electronic WIC State Maintenance
-----
State.....>>> Kentucky [↓]
State ID.....>>> 1
Bank Identification Number.....>>> 606370
PAN Length.....>>> 16
PAN Training Digit.....>>> 7
PAN Masking Start.....>>> 13
PAN Masking End.....>>> 16
FTP Server IP Address.....>>>
FTP User Name.....>>>
FTP User Password.....>>>
FTP RAS Number.....>>>
FTP Template Number.....>>>
ZIP Password.....>>>
Forwarder ID.....>>>
Merchant ID.....>>>
Electronic WIC Type.....>>> e-WIC [↓]
Display Eligible Benefits Only...>>> [ ]

[F2] Update   [F5] WIC Items   [F3] Cancel
  
```

The Electronic WIC State Maintenance screen contains the following configurable fields:

Field	Description
State	The state or tribal organization employing an electronic WIC tender. (Press the Down Arrow to select the state).
State ID	Enter the EBT State ID that identifies the grocer to the state or tribal organization (as defined by the WIC Agency).
Bank Identification Number (BIN)	Enter the number used to identify the institution that issues the state or tribal organization EBT WIC card.
PAN Length	Enter the length of Primary Account Number as determined by WIC Agency.
PAN Masking Start	Enter the position (as determined by WIC Agency) to start unmasking the PAN number on the receipt and display.
PAN Masking End	Enter the position (as determined by WIC Agency) to stop unmasking the PAN number on the receipt and display.
FTP Server IP Address	Enter the FTP IP address of the server where state APL files are available for downloading to the Electronic WIC import folder.
FTP User Name	Enter the User Name to use when connecting to the state server.

Note:

A masked number appears as an asterisk.

Field	Description
FTP User Password	Enter the Password to use when connecting to the state server.
FTP RAS Number	Enter the RAS (Remote Access Server) Number to use when connecting to the state server from a remote location.
FTP Template Number	Enter the FTP Template number to use to facilitate file transfers with the state server.
Zip Password	Enter the password to use when unzipping state files.
Forwarder ID	Enter the WIC agency assigned identifier of the entity that will send the file(s) to the state.
Merchant ID	Enter the WIC agency assigned identifier that indicates the entity that accepted the card used in the transaction.
Electronic WIC Type	Click the field selection arrow and select whether the state supports EBT WIC or e-WIC . (Press the Down Arrow to select the type).
	Note: Stores are prohibited from performing both Online WIC EBT and Smart Card WIC EBT transactions for a specific state.
Display Eligible Benefits Only	For states defined as e-WIC , check this box to print only the available benefit units that the WIC customer can redeem on the Beginning Benefits Balance, Benefits Redemption and Ending Benefits Balance Reports.

Press **[F2] Update** to save changes to WIC State Maintenance.

To view and modify imported state Approved Product List (APL) items, press **[F5] WIC Items**. The Electronic WIC Item Maintenance Screen displays:

PCM

State: Kentucky

Electronic WIC Item Maintenance

PLU No.	PLU Descr.	Cat.	Subcat.	Enable WIC Sale
1111091825	0019	0000	[]
1111091829	0019	0000	[]
1111091830	0019	0000	[]
1116101764	0008	0000	[]
1116101764	0008	0001	[]
1116115901	PINTO BEANS-SHURFIN	0006	0000	[]
1116115901	PINTO BEANS-SHURFIN	0006	0002	[]
1116146087	0002	0000	[]
1116146087	0002	0001	[]
1116146089	0002	0000	[]
1116146089	0002	0001	[]
1116146179	0002	0000	[]
1116146179	0002	0001	[]
1116146681	0002	0000	[]
1116146681	0002	0001	[]
1116146682	0002	0000	[]

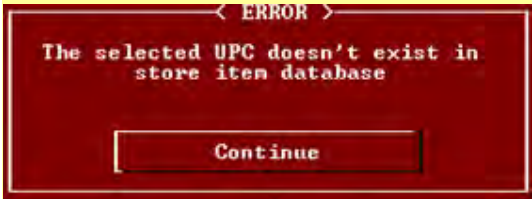
[F3] Cancel

The Electronic WIC Item Maintenance screen contains the following fields:

Field	Description
PLU No.	(Read-only) The UPC/PLU as it appears in the host file.
PLU Description	(Read-only) The PLU Description from the store's item file.
Category	(Read-only) The state category number.
Subcategory	(Read-only) The state subcategory number.

Note:

A subcategory of 0000 indicates Broadband category.

Field	Description
Enable WIC Sale	<p>A check in this field indicates the item is active for tendering with an Electronic WIC Tender. Press the Enter key to check (uncheck) the flag for the highlighted item.</p> <p>Note:</p> <p>When a retailer implements a Least Expensive Brand (LEB) item, the store must disable this flag for all competing brands.</p> <p>Note:</p> <p>When the Enable WIC Sale flag is enabled (or disabled) for an item in a specific subcategory, the item's broadband subcategory for the item will also be automatically enabled (or disabled). Likewise, if the Enable WIC Sale flag is enabled (or disabled) for an item in a broadband category <u>and</u> the item also exists in a specific subcategory, the Enable WIC Sale flag will be automatically enabled (or disabled) in that item's subcategory.</p> <p>Note:</p> <p>The following message displays if the item being enabled does not exist in the ISS45 Item File.</p> 

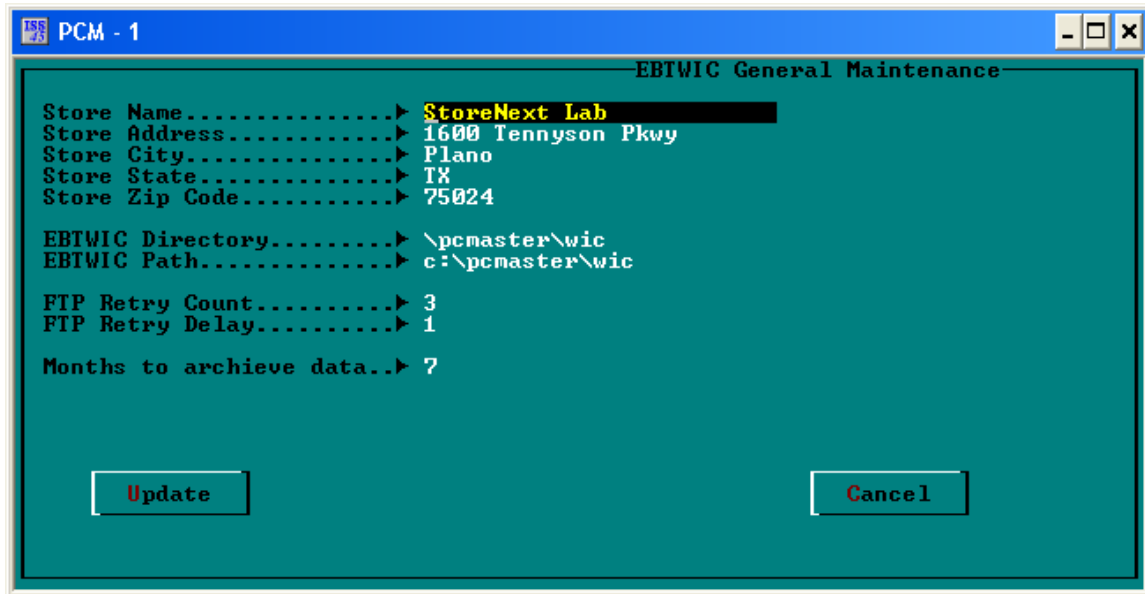
Note:

The "Pmt by WIC" and "Pmt by WIC CVV" flags in PLU Maintenance are no longer used for Electronic WIC purposes. The "Enable WIC Sale" flag in Electronic WIC Item Maintenance determines eligibility for Electronic WIC tendering.

Note:

To locate an item to view or edit, enter the item's PLU Number (or use the Page Up \ Page Down buttons to scroll through the list). If the item number does not exist in the APL for the state, the message "The selected UPC doesn't exist in the store item database" will display.

To configure the Electronic WIC store parameters, select **Store Params** from the Electronic WIC Store and State Parameters screen. The General Maintenance screen displays:



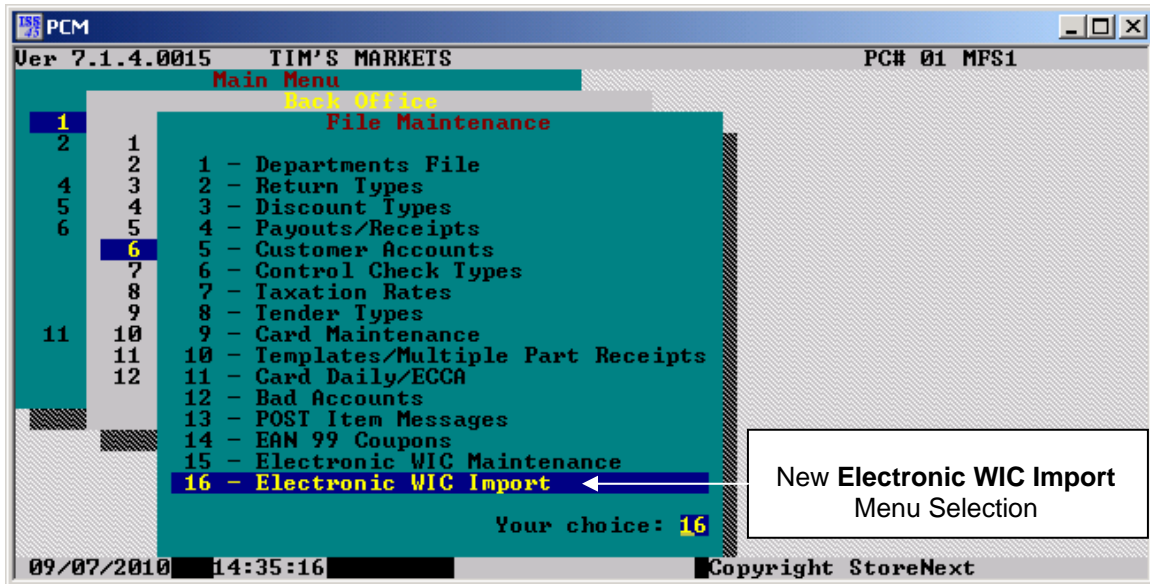
The Electronic WIC General Maintenance screen contains the following Smart Card WIC EBT-related fields (previously maintained manually through the SMARTWIC.INI file):

Field	Description
Store Name	The store name.
Store Address	The store address.
Store City	The store city.
Store Zip Code	The store zip code.
Electronic WIC Directory	Set this field to \pcmaster\wic .
Electronic WIC Path	Set this field to c:\pcmaster\wic .
FTP Retry Count	Enter the number of retry attempts to retry the FTP connection to the state.
FTP Retry Delay	Enter the number of seconds to wait between retries.
Months to archive data	Enter the number of archive WIC files.

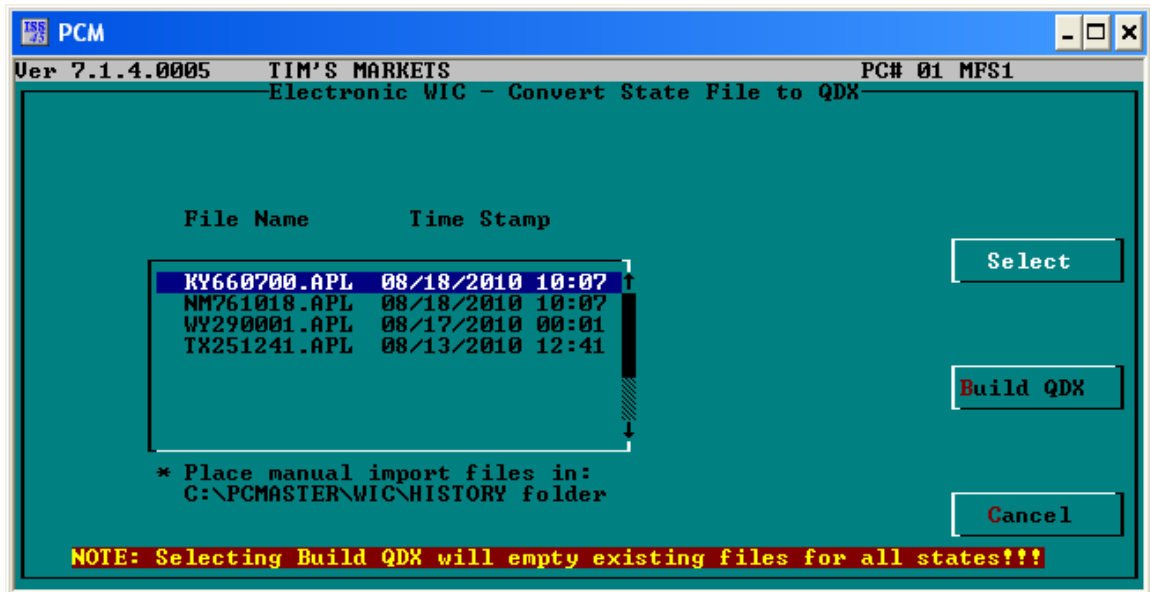
Press **Update** to save changes to Electronic WIC General Maintenance.

New Electronic WIC Import

Electronic WIC Import (1-6-16) has been added to the File Maintenance Menu in this release for manually processing APL files (for both Online WIC EBT and Smart Card WIC EBT) as well as Hot Card List (HCL), Reconciliation and Error files (for Smart Card WIC EBT).



When selected, the Convert State File to QDX screen displays a list of unprocessed files state files.



Select (highlight) one or more files to process and execute the **Build QDX** function.

Note:

It continues to be the responsibility of the store to acquire the APL (Approved Product List) files from state WIC agencies and place them in the appropriate folder. EOD will continue to look for a zipped APL file in the C:\PCMASTER\WIC\APL folder. The manual import will continue to look for an unzipped APL file in C:\PCMASTER\WIC\HISTORY folder.

Note:

The APL import accepts both x9.93-2 and x9.93-4 file formats.

Note:

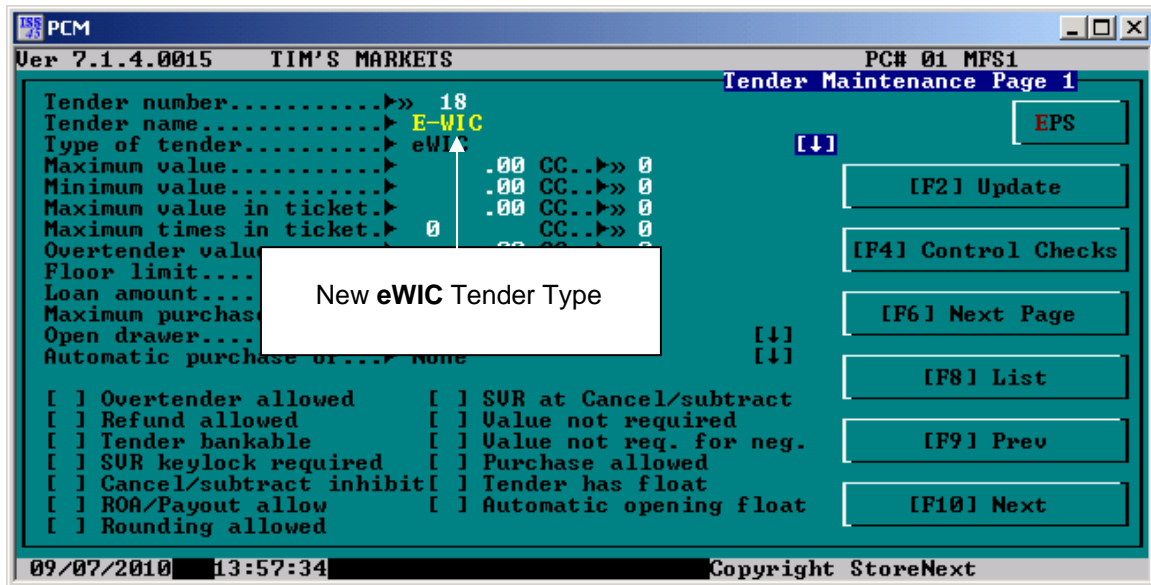
If an item in the APL import file has the Purchase Indicator flag enabled (set to 1), the import creates both a specific subcategory record and a broadband subcategory record for the item in the WICITEMS.QDX file.

Note:

File processing events and errors will continue to write to the SWVERIFY.LOG file.

New Online WIC EBT Tender Type

Online WIC EBT has been added as a selection in the “Type of tender” field within Tender Type Maintenance (1-6-8).



When configuring the Online WIC EBT Tender, set the fields below as follows:

Tender Type: **eWIC** (Tender Maintenance Page 1)

Account Prompt: **SWIPE WIC CARD** (Tender Maintenance Page 2)

EFT Description: **EWIC** (Tender Maintenance Page 2)

Acc. Number required: **Entered by customer** (Tender Maintenance Page 2)

Use ECA on this media: **Checked** (Tender Maintenance Page 2)

New EOD Logic

If a state is configured with an Electronic WIC Type of “e-WIC” (in Electronic WIC Maintenance), no State Claim File is generated and no State Reconciliation File is processed during EOD.

POS

POS Online WIC EBT Tendering

The POS now supports Online WIC EBT tendering using the following steps:

1. Cashier adds items to ticket on the POS.
2. Transaction is totaled.
3. Cashier selects the Online WIC EBT tender or Generic EFT Keyboard Function Code 840 (and customer selects tender from Pin Pad).

Note:

Online WIC EBT must be the first tender key pressed if multiple tenders are used.

4. POS follows transaction flow for Pre-Authorization based on the First Action and TAC Sequence defined in MTXEPS ServerEPS.
5. POS sends Pre-Authorization to Host.
6. The Online WIC EBT Account is authenticated at the Host.

Note:

Card Validation details (State Code, FIPS, Masked PAN and BIN) are written to the WinPOS.log file.

7. Host responds with Online WIC EBT data.

Note:

The response returned from the MTX_POS_GET_eWICRx call is written to the wpeft.log file.

8. POS reads prescription data and finalizes Pre-Authorization.
9. POS determines Online WIC EBT eligibility for items in transaction.

Note:

ISS45 employs “progressive redemption” logic for Electronic WIC items. If insufficient benefits (or no benefits) are available within the item’s specific subcategory, ISS45 checks benefits in the broadband subcategory.

- If sufficient benefits exist by combining subcategories, the redemption is split across subcategories (using the specific subcategory first).
- If no benefits exist in the item’s specific subcategory, benefits are redeemed against the broadband subcategory.
- If insufficient benefits exist by combining both specific and broadband subcategories, item is deemed ineligible.

Note:

Prescription benefit details are written to the WinPOS.log file.

10. POS prints Beginning Balance Report to receipt (using the “Display Eligible Benefits Only” setting for the state).
11. POS prints Benefits Redemption Report to receipt listing eligible WIC items (using the “Display Eligible Benefits Only” setting for the state).

Note:

Prescription benefit details are written to the WinPOS.log file.

12. POS initiates a Pre-Authorization Completion. POS follows transaction flow for Pre-Authorization Completion based on the First Action and TAC Sequence defined in MTXEPS. If the “Customer OK Amount” TAC is configured, the customer is prompted if the amount is OK.
13. If the amount is approved, the POS sends updated prescription data to Host.

Note:

If the amount is not approved, the POS returns to Tender Mode. The cashier may modify the order at this time and re-tender.

Note:

Data (with updated prescription data) sent with the MTX_POS_SET_eWICRx function call is written to the wpeft.log file.

Note:

Rejection responses from the host pertaining to the price of the item being higher than the amount of state reimbursement benefit are ignored. The store will lose money on these items (as detailed by the reconciliation report received by the state at the end of the month).

14. Host responds with approval and final prescription data.

Note:

Similar to Smart Card WIC EBT, for determining Online WIC EBT benefit redemption:

- Order level promotions are apportioned between Electronic WIC and non-Electronic WIC items.
- Free items cannot be used for prescription benefits.
- Reduced item prices are used for claims (not the full item price).

15. Online WIC EBT data are written to the TLOG using a new Online WIC EBT Information Transaction (0x70 0xF3). See the Technical Reference Appendix on page 25).
16. The cashier may accept other tenders to complete the transaction (for mixed baskets and/or insufficient prescription benefits).
17. The POS prints the sales receipt, Beginning Balance Report, Benefits Redemption Report and Ending Balance Report.

Note:

The Ending Balance Report will print "No Benefits Available" if all benefits are used in the transaction and the "Display Eligible Benefits Only" setting for the state is enabled.

Certified Promotions\Coupons for Online WIC EBT Tending

The following promotion types have been requested by WIC Agencies. ISS45 promotions configured as detailed below are certified for awarding in a ticket tendered with Online WIC EBT:

Transaction Discount Promotion

- Enhanced Member Promotions (1-9-2)
 - Group Type: **Units**
 - Reward Type: **Percent Off Order**

Item Discount Promotion

- Enhanced Member Promotions (1-9-2)
 - Group Type: **Units**
 - Reward Type: **Cash Value**
 - Threshold \ 2nd Threshold: **1 \ 1**

Buy One, Get Reduced (BOGR)

- Enhanced Member Promotions (1-9-2)
 - Group Type: **Units**
 - Reward Type: **Cash Value**
 - Threshold \ 2nd Threshold: **2 \ 2**

Note:

The Cash Value rewards for Enhanced Promotions must be lower than the price of the item.

Buy One, Get One (BOGO)

- Offers Promotions (1-7-3)
 - Price is Percentage: **Value**
 - Reduction Amount: Price of the item
 - Quantity at standard price: **1**
 - Quantity at discount price: **1**

Note:

It is not recommended to:

- Attach both Electronic WIC and non-Electronic WIC items to the same promotion.
- Attach both taxable and non-taxable Electronic WIC items to the same promotion.
- Have more than one promotion active for an Electronic WIC item at a time.

Vendor (UPC5) coupons applied to Electronic WIC items cannot be greater than the item price. Store coupons are not supported.

Note:

If a coupon applied to an Electronic WIC item reduces the order balance to zero, the POS prevents tendering with Online WIC EBT (to avoid using a benefit for a \$0.00 transaction). If a tax remains on the item, the order balance is not considered as \$0.00.

Online WIC EBT Balance Inquiry Support

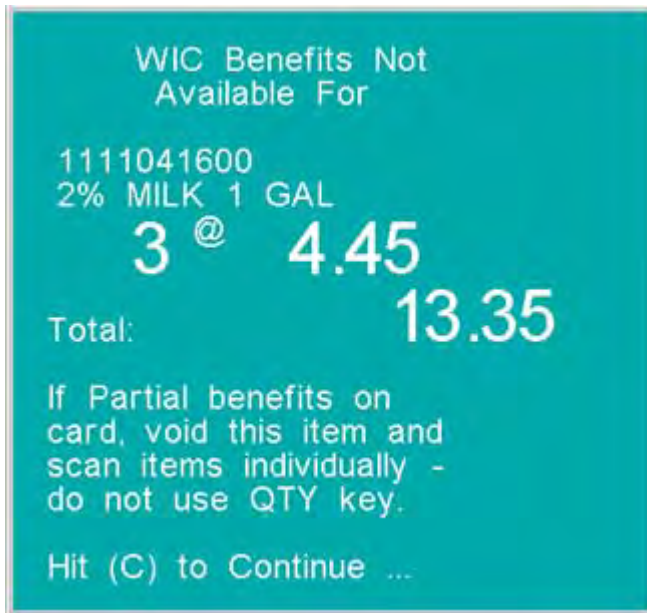
Keyboard Function Code 842 (EBT Balance Inquiry) can be used to provide a customer a printout of their available prescription benefits. The POS follows transaction flow for Pre-Authorization based on the First Action and TAC Sequence defined in MTXEPS ServerEPS. After the Online WIC EBT Account is authenticated with the host and the POS

approves the state, it builds the benefits list and prints the Beginning Balance Report to the customer receipt.

New POS Messages

The new warning and error messages shown below may appear during an Online WIC EBT transaction under their accompanying scenarios.

- If the Quantity key is used on an Electronic WIC item and there are insufficient benefits available, the items will be treated as non-Online WIC EBT and a warning message similar to the one below displays:



Note:

The cashier will need to void the items added to the ticket using the quantity key and sell the items individually.

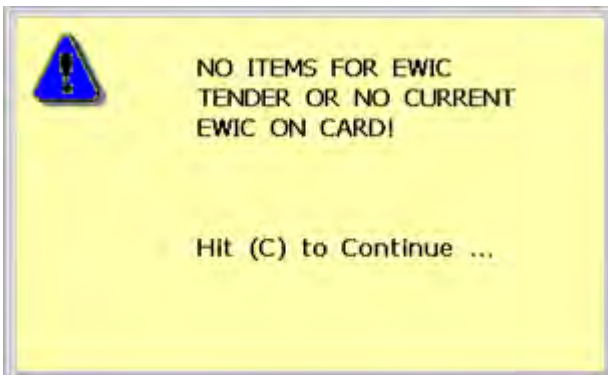
- If the Host denies the claim after an approval is sent, the following warning message displays and the POS returns to Tender Mode, the following warning message appears:



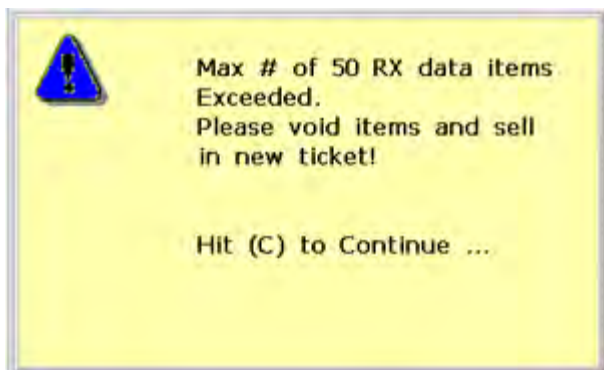
- If the "Customer OK Amount" TAC is configured and the customer chooses not use Online WIC EBT in the ticket, the following message displays to the cashier.



- If Online WIC EBT is attempted to be tendered and there are no benefits available or no Electronic WIC items in the transaction, the following warning message displays:

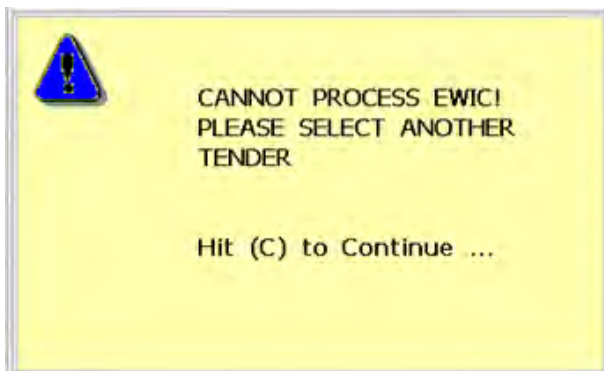


- If more than 50 prescription benefit item are present in a ticket being tendered with Online WIC EBT, the following message displays to the cashier:

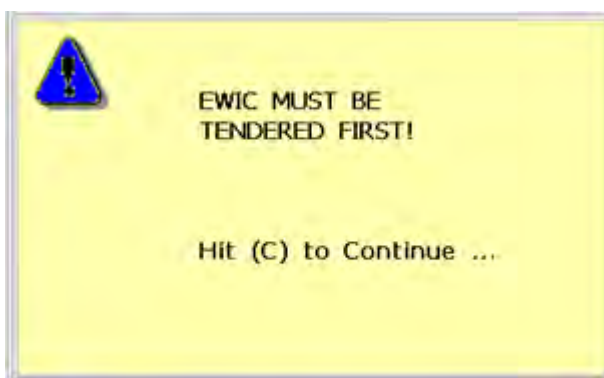
**Note:**

The cashier will need to void the excess items, tender the ticket and then ring the extra items separately into a second ticket.

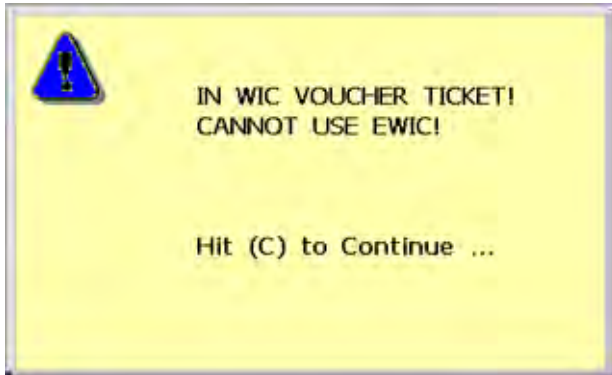
- If a vendor coupon applied to an Electronic WIC item reduces the order balance to zero, the POS will not allow Online WIC EBT to be tendered and the following warning message displays.



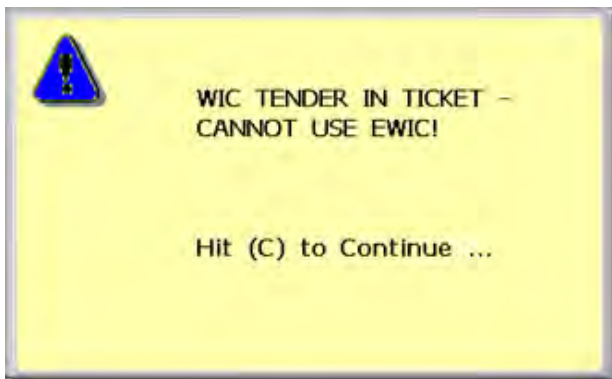
- If Online WIC EBT is not the first tender, the following warning message appears:



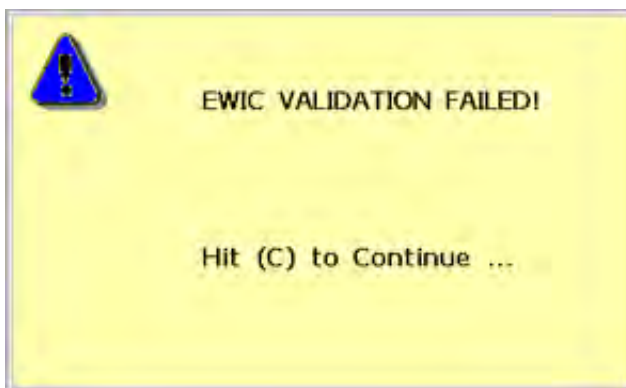
- If the ticket has been partially tendered with another form of paper WIC tender (WIC CVV or WIC Voucher) and Online WIC EBT tendering is attempted, the following warning message displays:



- Likewise, if the ticket has been partially tendered with Smart Card WIC EBT and Online WIC EBT tendering is attempted, the following warning message displays:



- If the state's Online WIC EBT card is not defined in Electronic WIC State Maintenance or is defined with an Electronic WIC Type of "EBT WIC", the following warning message appears:



- If the customer attempts to tender with Online WIC EBT a second time in a transaction or attempts to tender with another WIC tender (Smart Card WIC EBT, WIC CVV or WIC Voucher) after tendering with Online WIC EBT, the following warning message displays. (The POS returns to Tender Mode when cleared).



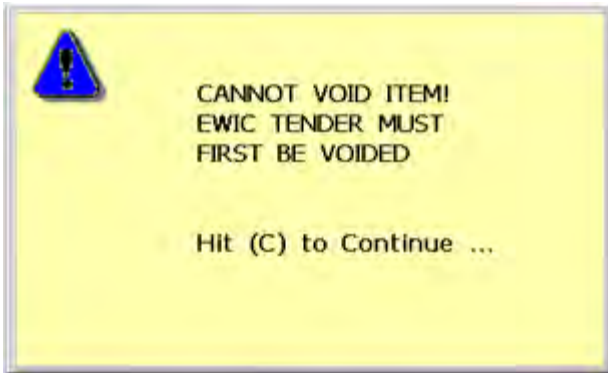
- Post Void Transactions are not allowed with transactions tendered with WIC tender. When attempted the following prompt displays:



If "Yes" is selected, the following error displays:

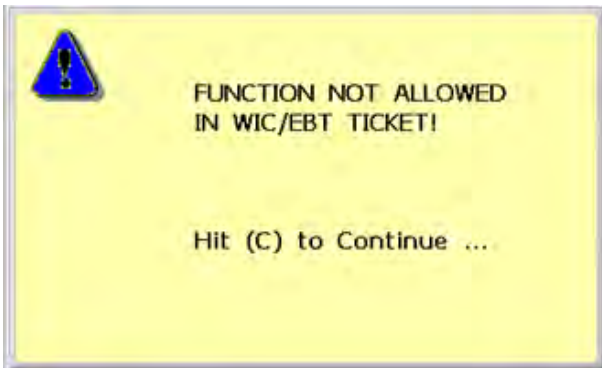


- If the cashier attempts to void any Item in the ticket after Online WIC EBT has been tendered, the following warning message displays:

**Note:**

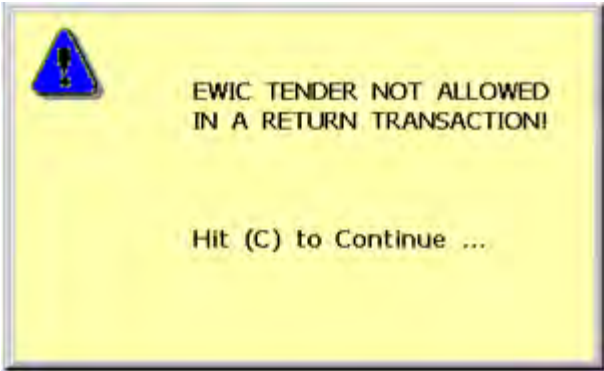
Voiding an item after Online WIC EBT has been tendered could affect promotions, discounts, and or taxes (for state claim purposes). The cashier must first void the Online WIC EBT tender.

- A member card or frequent shopper card cannot be entered into a ticket if Online WIC EBT has already tendered. If attempted the following warning message displays:

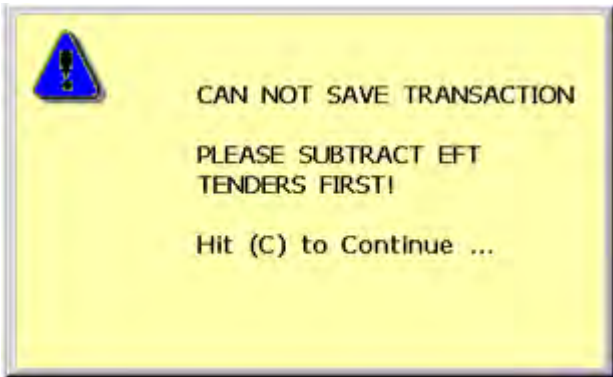
**Note:**

The cashier must first void the Online WIC EBT tender before entering the card number.

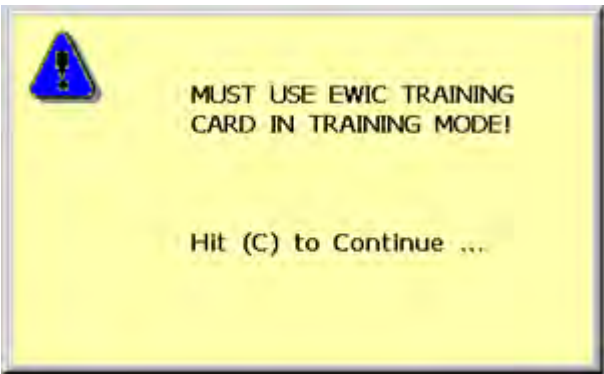
- If Online WIC EBT is attempted to be tendered in a return transaction, the following warning message displays:



- If a transaction is attempted to be saved when partially tendered with Online WIC EBT, the following warning message displays:



- If a non-training Online WIC EBT card is entered in training mode, the following message displays to the cashier:



- If Online WIC EBT tendering is attempted on a self-checkout lane:

**Note:**

When "Print Last Transaction" is performed for a ticket that has tendered Online WIC EBT, the Beginning Balance Report, Benefits Redemption and Ending Balance Report will be printed in addition to the sales receipt.

12720 – PLU Group #0 Prevention (BO)

In previous ISS45 releases, it was possible to create a PLU Group #0 (through PLU Groups Maintenance 1-4-2). Once created, all other previously created groups no longer appeared as maintainable (until all items attached to Group #0 were unlinked).

In this release, if an attempt is made to create a PLU Group #0 the following error message appears:



13144 – Expanded Control Check for Cancel Item Functionality (POS)

In previous ISS45 releases when the Subtract Item button (Keyboard Function #902) was pressed twice in succession, the POS performed the Cancel Item function (voiding the last item added to the ticket) without issuing the Control Check “CC for Item Cancel During Item Registration” (6-1-2-7 #8).

In this release, the POS issues the Control Check “CC for Item Cancel During Item Registration” (if established) when the Subtract Item button (Keyboard Function #902) is pressed twice in succession.

Note:

The “Cancel Item” function (Keyboard Function #901) differs from the “Subtract Item” function in that the Subtract Item function prompts for an item/dept number and then voids the entered item/dept. If the “Subtract Item” key is pressed again when the POS prompts for the item/dept number, the “Cancel Item” function is performed (voiding the last item added to the ticket).

Other Enhancements

- 13117 – In sites where LaneHawk is enabled (through the “LaneHawk in system” parameter 6-1-3-14), the POS now verifies that LaneHawk is installed on a “lane-by-lane” basis. To avoid slow response times on POS workstations where LaneHawk may be enabled on the HASP but LaneHawk software has not been installed, the POS now verifies the “retalix_lh_pos.exe” file does not exist in the “\Program File\retalix_lh_pos” folder. If not located, logic to communicate with LaneHawk is bypassed.

Note:

If LaneHawk software is installed in a different location (other than “\Program Files\retalix_lh_pos”) on the POS Workstation, the LaneHawk interface will not function properly.

- 160863 – The WIC CVV flag is now included in the output produced by the SLEXRCT.exe program.

POS Installation Modification

PKzip.exe and PKunzip.exe have been removed from the POS installation and these utilities will no longer reside on the POS. If you are utilizing these two applications, please change any references from PKzip.exe to Dzip.EXE and PKunzip.EXE to Dunzip.EXE.

Technical Reference Appendix

Release Database Changes

New TLOG Information Transaction

The layout of the new Online WIC EBT Information Transaction (0x70 0xF3) is as follows:

Bytes	From	To	Data	Bits	Explanation
1	0	1	Opcode	70	Log Information
					Trans Info 2
1	1	2	Function	0xF3	
1	2	3	Sub Function	0x01	Ticket Frame start
				0x02	Item Sale
				0x03	Item Cross Ref
				0x08	Ticket total
				0x09	Prescription details
				0x0B	Ticket tax details
				0x0C	Item tax details
				0x20	Benefits list
				0x99	Ticket frame end
Union					
Ticket Frame		0x01			Start
		0x99			End
2	3	5	POS number		
10	5	15	PAN		
1	15	16	PAN Length		
2	16	18	Alpha State Code		
1	18	19	State Fips (hex)		
4	19	23	Session Date		
3	23	26	Session time		
18	26	44	Not Used		
Union					
Item Sale		0x02			
7	3	10	PLU code		
2	10	12	Category		
2	12	14	Subcategory		
4	14	18	Quantity		

Bytes	From	To	Data	Bits	Explanation
2	18	20	Item Action Code		
4	20	24	Plu Price		
4	24	28	Sell Amount		
7	28	35	Linked PLU Code		
1	35	36	Plu Indicator		If CVV item or not
4	36	40	Count		
4	40	44	Approved Price		
Union					
Item Cross Ref	0x03				
2	3	5	Sequence #		
39	5	44	Not Used		
Union					
Ticket total	0x08				
4	3	7	Tender Amount		
4	7	11	Wic Coupon Total		
4	11	15	Wic Promotion Total		
4	15	19	Wic discount total		
4	19	23	Wic item total		
4	23	27	Wic item count		
4	27	31	Wic net total		
13	31	44	Not Used		
Union					
Prescription details	0x09				
4	3	7	Expiration Date		
37	7	44	Not Used		
Union					
Ticket tax details	0x0B				
1	3	4	Tax number		
4	4	8	Taxable Amount		
4	8	12	Tax Amount		
32	12	44	Not used		

Bytes	From	To	Data	Bits	Explanation
Union					
Item Tax Details					
7	3	10	Plu code		
1	10	11	Flag		
				Bit 0	FS item
				Bit 1	Cost plus
				Bit 2	Non merchandise item
				Bit 3	Negative item
				Bit 4	Discount allowed
				Bit 5	Not used
				Bit 6	Not used
				Bit 7	Not used
1	11	12	Tax		Indicates which taxes are enabled on this item
1	12	13	MSU amount		
4	13	17	Sell amount		
4	17	21	Return surcharge %		
4	21	25	Quantity		
2	25	27	Department		
17	27	44	Not used		
Union					
Benefit List					
1	3	4	Type of benefit record		0x01 = Beginning balance 0x02 = Eligible benefits 0x03 = Ending balance
1	4	5	Subtype		0x01 = Header 0x02 = Details
Union					
Header					
2	5	7	Number of details records		
10	7	17	PAN		
1	17	18	PAN length		
2	18	20	State code		
4	20	24	End date		


```

//          15- Staff discount type 2
//          16- Coupons
//          17- General tender
//          18- EBT food stamps
//          19- EBT cash
//          20- Accumulative
//          21- In-house purchase
//          22- Customer account payment
//          23- Credit Notes
//          24- black box I/F
//          25- WIC CVV
//          28- eWIC

```

The layout of the GEN_TBL.QDX (File Number 80) has changed in this release. The changes are in **bold** below.

```

typedef struct gtbl_EBTWIC_state_codes_ //OFS      Type
Description
{
37  unsigned char opcode;                // 0  NUM  Record opcode. Always
    unsigned char KeyFiller[22];        // 1  NU   Not used
    unsigned char StateFIPS;            //23  BCD  State code numeric 0-99

    unsigned char StateName[20];        //24
    unsigned char StateCode[2];         //44
    unsigned char BIN[32];              //46
    short PANLength;                    //78
    short TrainingDigit;                //80
    short PANMaskingPrintStart;         //82
    short PANMaskingPrintEnd;          //84
    unsigned char eWicType;            //86 : 0=SmartWIC 1=eWic
    unsigned char DisplayPrintAvailableBenefitsOnly; //87   eWIC Only
    unsigned char filler[167];          //88  NU   Not used
    unsigned char qdx;                  //255  BITS  QDX reserved flags
} GTBL_EBTWIC_STATE_CODES;

```

The layout of the Cross.QDX (File Number 101) has changed in this release. The changes are in **bold** below.

```

//KEY-1
#define PLU_PROM          0x20
#define DEPT_PROM        0x21
#define PLU_COUPON       0x22
#define PLU_STATE       0x2F

//KEY-2
#define PROM_PLU         0x30
#define PROM_DEPT       0x31
#define COUPON_PLU      0x32
#define STATE_PLU      0x3F

struct dept_            // STRUCT
{
    unsigned char filler[5]; //1  NU    Not used
    unsigned char dept[2];  //6  BCD   Department key
};

struct prom_           // STRUCT
{
    unsigned char filler[5]; //1  NU    Not used
    unsigned char prom[2];  //6  BCD   Promotion number
};

struct state_         // STRUCT
{
    unsigned char filler[6]; //1  NU    Not used
    long state_id; //7  BCD   State FIPS number
};

struct cross_          //OFS Type
Description
{

    //-- GENERAL part -----

    unsigned char opcode; //0  BCD   Opcode .inks
                        //  1- Prom   -> PLU
                        //  3- Prom   -> Department
                        //  10- Coupon -> PLU

```

```

//      20-PLU      -> Prom
//      21-Department -> Prom
//      22-PLU      -> Coupon
//      2F-PLU      -> State
//      30-Prom     -> PLU
//      31-Prom     -> Department
//      32-Coupon  -> PLU
//      3F-State    -> PLU

union

{

    unsigned char plu[7];          //1   BCD   PLU key
    unsigned char coupon[7];      //1   BCD   Coupon key
    struct dept_   dept;          //    STRUCT
    struct prom_   prom;         //    STRUCT
    struct state_   state;      //    STRUCT

    }key1;                        //was 'prom_or_coupon'

union

{

    unsigned char plu[7];          //8   BCD   PLU key
    unsigned char coupon[7];      //8   BCD   Coupon key
    struct dept_   dept;          //8           Department key
    struct prom_   prom;         //8           Promotion number
    struct state_   state;      //    STRUCT

    }key2;

    struct cross_flags_          //15   STRUCT
    unsigned char delete_pending :1; //    BIT   Delete in EOD
    unsigned char free_item_plu  :1; //    This is the Free Item Code PLU
    unsigned char filler         :6; //    NU    Not used

    }flags;

```

```

    unsigned char  bucket_num;          //16  NUM    Bucket
number
    struct type_prom_                    //17  STRUCT
{
    unsigned char  local_multisaver :1;  // BIT    Immediate Promotion
    unsigned char  multisaver       :1;  // BIT    Enhanced Promotion
    unsigned char  linksave         :1;  // BIT    Group Promotions
    unsigned char  ext_prom         :1;  // BIT    Order Promotions
    unsigned char  ext_prom_banded  :1;  // BIT    Order/Levels Promotions
    unsigned char  ext_linksave     :1;  // BIT    Order/Group Promotions
    unsigned char  free_item        :1;  // BIT    Free item promotion
    unsigned char  nu               :1;  // NU     Not used

}type_prom;

    unsigned char  fiiller[13];         //18  NU     Not used
    unsigned char  qdx;                //31  BITS   QDEX resrved flags

};

```

The layout of the WICITEMS.QDX (File Number 206) has changed in this release. The changes are in **bold** below.

```

struct CWICItem_
{
    char state;                          // 0  BCD State Code
    unsigned char UPC[7];                 // 1  BCD UPC Number
    char Category[2];                     // 8  BCD Category
    char SubCategory[2];                  //10  BCD Subcategory
    char KeyFiller[11];                   //12  Key filler
    char nu_UOM[5];                        //23  not used
    long PakSize;                          //28  Pack Size
    long BenefitQty;                       //32  Quantity of benefit units
                                           //   req to redeem
    char BenefitUnit[5];                   //36  Descrip.of Unit of Measure
                                           //   for benefits
    long Price;                            //41  Reimbursement Price
    char PriceType;                        //45  Price Type

```

```

//      00 - Price not disclosed
//      01 - Max Price
//      02 - Contract Price
//      03 - Cash Value Voucher
//      04-25 Reserved for
//      national use
//      26-99 Reserved for Private
//      Use

char StartDate[3]; //46 BCD YYMMDD Date
char ExpDate[3]; //49 BCD YYMMDD Date
unsigned char LinkUPC[7]; //52 BCD Linked Item Code
unsigned char PLUIndicator; //59 PLU/UPC Indicator
char PLULength[2]; //60
char FullUPCfromApl[17]; //62 Entire UPC buffer from the
// APL, including CD and PLU
// indicator -
// used when sending PS data
// back to host

char NU[176]; //79 Not Used
char QDXflag; //255 Quickdex Flag
};
```

Out of Scope

Limitations of new features in this release are listed below (and were not addressed in development).

Note:

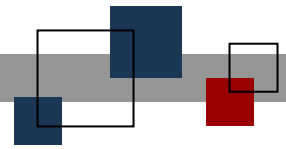
The limitations below are known as of this writing, and are provided in order to assist users and support personnel to plan, install and operate the capabilities described in this document. While StoreNext Retail Technologies LLC endeavors to ensure that this information is correct and fairly stated, no attempt is made here to catalog all limitations that could be construed or that may become known in the course of use or experience.

FSD Number	Enhancement	Out of Scope
12629	Online WIC EBT Support	<p>Online WIC EBT Support is available for the current release only (and will not be made compatible with previous ISS45 releases).</p> <p>Online WIC EBT development excluded:</p> <ol style="list-style-type: none"> 1. Support for Online WIC EBT on self-checkout terminals. 2. Acquiring the APL files from state WIC Agencies. (This will remain the responsibility of the retailer). 3. Allowing partial tender of CVB items (split across e-WIC and non-Online WIC EBT tender). 4. Adding Online WIC EBT transaction reports. 5. Supporting processors other than JP Morgan and WIC Direct. 6. Supporting LEBs for multiple states.
12720	PLU Group #0 Prevention	<p>Online WIC EBT Support is available for the current release only (and will not be made compatible with previous ISS45 releases).</p> <p>PLU Group #0 Prevention development excluded:</p> <ol style="list-style-type: none"> 1. Any changes to the current "Unlink" function. 2. Any changes to the current "Rebuild" function.
13144	Expanded Control Check for Cancel Item Functionality	<p>Expanded Control Check for Cancel Item Functionality is available for the current release only (and will not be made compatible with previous ISS45 releases).</p>

Dependencies

Dependencies to utilize new features in this release are listed below.

FSD Number	Enhancement	Dependencies
12629	Online WIC EBT Support	<ol style="list-style-type: none">1. StoreNext Connected Payment Interface with MTX OpenEPS payment system version V826.2 (with latest patches installed).2. Pin pad encrypted for Online WIC EBT.3. Manual TAC Sequence for Online WIC EBT and required PIN entry configured in ServerEPS4. MTX Receipts enabled in the system to correctly display Online WIC EBT messages.
13144	Expanded Control Check for Cancel Item Functionality	<ol style="list-style-type: none">1. The Control Check Option for "CC for item cancel during item registration" (6-1-2-7 #8) must be established.



© StoreNext Retail Technologies LLC 2010

StoreNext Retail Technologies LLC endeavors to ensure that the information in this document is correct and fairly stated but does not accept liability for any error or omission.

The development of StoreNext products and services is continuous and published information may not be up to date. It is important to check the current position with StoreNext. This document is not part of a contract or license save insofar as may be expressly agreed.