






The logo for ISS 45, consisting of the letters 'ISS' in a large, bold, black sans-serif font above the number '45' in a large, bold, black serif font, all enclosed within a thin black rectangular border.

-  *ISS45 Version 7.1.4.0-070*
-  *Release Notes & What's New*
- 
- 
- 

## ISS45 V7 Release Notes & What's New

<b>Date of Issue</b>	<b>Product Identification Number</b>	<b>Part Number</b>	<b>Brief Description</b>
Earlier Releases: 89000408, 89000444, 89000444B, 89000516			
September 2009	45001/080	89000533	7.1.3.0-090
May 2010	45001/080	89000564	7.1.3.0-140
June 2010	45001/080	89000564	7.1.3.0-150
June 2010	45001/080	89000572	7.1.3.0-160
August 2010	45001/080	89000588	7.1.3.0-170
November 2010	45001/080	89000598	7.1.4.0-050 Release
November 2010	45001/080	89000605	7.1.4.0-050 Updated
December 2010	45001/080	89000606	7.1.4.0-050 Updated
February 2011	45001/080	89000628	7.1.4.0-060
April 2011	45001/080	89000637	7.1.4.0-070

**©Copyright StoreNext Retail Technologies LLC 1995-2011  
All rights reserved**

This publication is protected by federal copyright law. This document and its contents are the proprietary, confidential information and property of StoreNext. Unauthorized disclosure, reproduction, distribution or use of this document and/or its contents in any form is strictly prohibited. No part of this publication may be reproduced or transmitted into any human or computer language in any form or by any means, stored in a retrieval system, transmitted, redistributed, translated or disclosed to third parties, or de-compiled in any way including, but not limited to, photocopy, photograph, electronic, mechanical, magnetic or manual without the express written permission of StoreNext Retail Technologies LLC or its licensors, if any. This document, notwithstanding the above, may be distributed in electronic or printed form to personnel who are employed by either (1) a StoreNext customer of the subject system of this document or (2) personnel from an authorized StoreNext dealer of the subject system of this document. All copies, so distributed and/or so authorized, shall contain a full copy of this copyright notice.

StoreNext Retail Technologies LLC has prepared this manual for use by users, authorized third parties and personnel of StoreNext Retail Technologies LLC as a guide to the proper installation, operation, customization and/or maintenance of StoreNext Retail Technologies LLC equipment and software. The drawings and specifications contained herein are the property of StoreNext Retail Technologies LLC and/or its licensors.

StoreNext Retail Technologies LLC endeavors to ensure that the information in this document is correct and fairly stated but does not accept liability for any error or omission. StoreNext Retail Technologies LLC makes no representation or warranties with respect to the contents hereof, and specifically disclaims any implied warranties of merchantability or fitness for a particular purpose or non-infringement. No commitments by StoreNext or its suppliers are made from this documentation which is provided for information only.

Development of StoreNext products and documentation is continuous: StoreNext Retail Technologies LLC reserves the right to revise this publication and to make changes from time to time in the contents hereof or in the products herein described or discussed without notice and without any obligation of StoreNext Retail Technologies LLC to notify any person or organization of such revision or changes. Information published in this document will likely become obsolete over time and it is recommended that users regularly check for updates and newer versions.

The trademarks StoreNext and Retailix are registered trademarks or trademarks of Retailix; all other trademarks or registered trademarks are the property of their respective owners. Third-party products, services, or company names referenced in this document may be trademarked or copyrighted by their respective owners, and are for identification purposes only.

Copyrights, trademarks and license agreements shall be governed and construed in accordance with the laws of the State of Texas and the Federal Arbitration Act, and shall benefit Retailix, its successors, and assigns.

Address comments and corrections to:

**StoreNext Retail Technologies LLC**  
Software Program Director  
797 Commonwealth Drive  
Warrendale, PA 15086

# Table of Contents

<b>Table of Contents</b> .....	<b>i</b>
<b>Introduction</b> .....	<b>1</b>
221024 – Auto Enable for APL Item Import (BO).....	2
221026 – APL Item Import Limits (BO) .....	3
223857 – Post WIC Pre-Authorization Swipe Prevention (POS) .....	5
<b>Technical Reference Appendix</b> .....	<b>6</b>
Out of Scope .....	6



# Introduction

Enhancements were recently made to the StoreNext ISS45 system. The changes are reflected in the accompanying ISS45 7.1.4.0-070 software. The Change Request Document (CRD) number assigned to each enhancement is listed in the description heading.

The Change Request Document (CRD) number assigned to each enhancement is listed in the description heading. Following the change description is an abbreviation (or combination thereof) of the ISS45 area affected:

(BO) – Back Office

(POS) – WinPOS

(Sys) – System / Services

These enhancements are explained in detail in the following pages and are not included in the latest Office Users Guide, WinPOS User Guide or Office Administrator's Reference. If you have any questions regarding this release, please contact StoreNext Support.

## 221024 – Auto Enable for APL Item Import (BO)

SmartWic.exe, the import program that processes state APL (Approved Product Lists), has been modified in this release to:

- Automatically set (check) the “Enable WIC Sale” flag of newly imported WIC items.
- Retain the status of the “Enable WIC Sale” flag for previously imported WIC items when they are re-imported from an updated APL file

In previous releases, the “Enable WIC Sale” flag was disabled for all items after each APL import. This required retailers to repeatedly re-enable each item to be active in the Electronic WIC program.

**Note:**

The time it takes to import WIC items from the APL file will increase slightly as imported items are checked against temporary records containing previous “Enable WIC Sale” settings so the status may be retained.

**Note:**

The “Enable WIC Sale” flag is maintained through Electronic WIC Maintenance (1-6-15).

## 221026 – APL Item Import Limits (BO)

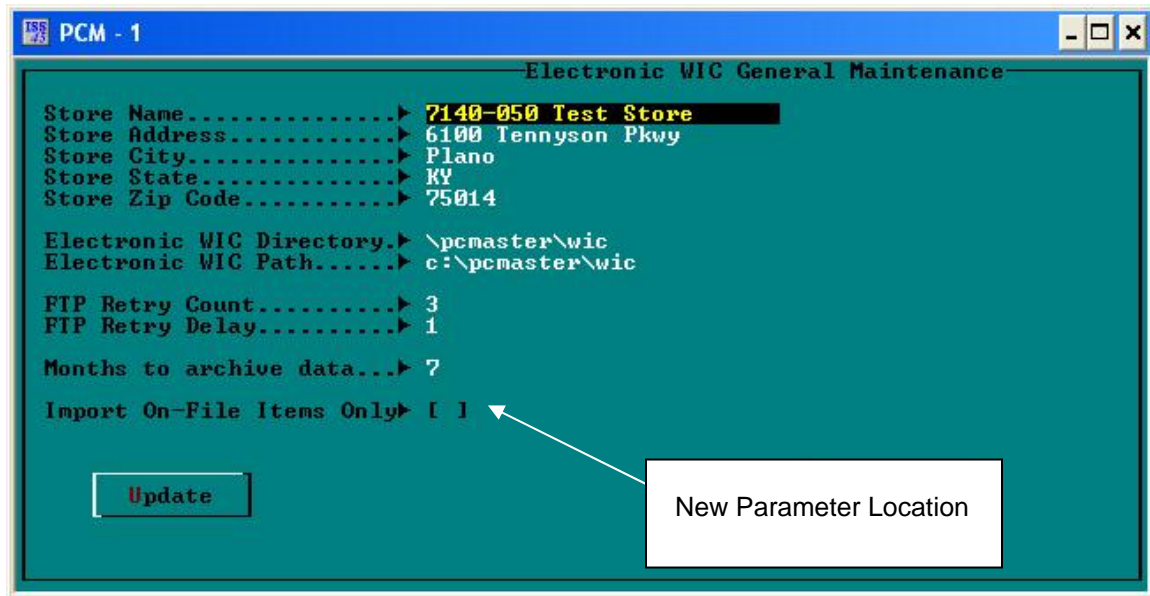
When enabled, a new parameter found in the release will limit the import of the WIC items from the state APL file to just those items that are applicable to the store. By limiting the imported items to only those items in the store PLU file (and those WIC CVV items linked to store PLUs), it is easier for store personnel to locate and perform maintenance on these items.

### Note:

In previous releases, all items that exist in the state WIC APL file are imported into the Wicitems.qdx file. A state APL file may contain over 10,000 items, with only a small percentage of those items maintained in the store item file.

## New Parameter

To support this feature, a new parameter has been established in the **Electronic WIC General Maintenance** Screen (1-6-15-Store Params).



Parameter	Explanation
Limit the WIC APL Item import to only those items that exist in PLU File or WIC Link File.	When this parameter is checked, only those items that currently exist in the store PLU file or in the WIC Link file will be imported.

**Note:**

The time it takes to import WIC items from the APL file will increase slightly as imported items are checked against both the PLU file and WIC link file before importing. If the item exists in one or both of the files, the WIC item is imported into the internal Wicitems.qdx file.

**Note:**

The WicLinkMaint.exe program (located in the \PCMASTER\WIC folder) is used to map the state's PLU codes for produce items to the store's item file (for these items).

## 223857 – Post WIC Pre-Authorization Swipe Prevention (POS)

PIN Pad logic has been changed in this release to prevent a payment terminal from returning to a swipe card state after an Online WIC EBT pre-authorization. The PIN Pad is now only reset (to allow the next tender card swipe) until after the cashier selects whether to apply benefits.

**Note:**

This change also prevents the chance that a card could be swiped at an incorrect time when the system is configured to have the customer choose at the PIN Pad whether to apply benefits. A card swipe after the Online WIC EBT pre-authorization (and before the customer is presented with the question to apply benefits) could cause a tender mismatch error once the selection to apply benefits is made.

# Technical Reference Appendix

## Out of Scope

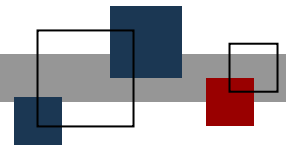
Limitations of new features in this release are listed below (and were not addressed in development).

**Note:**

The limitations below are known as of this writing, and are provided in order to assist users and support personnel to plan, install and operate the capabilities described in this document. While StoreNext Retail Technologies LLC endeavors to ensure that this information is correct and fairly stated, no attempt is made here to catalog all limitations that could be construed or that may become known in the course of use or experience.

FSD Number	Enhancement	Out of Scope
221024	Auto Enable for APL Item Import	Auto Enable for APL Item Import is available for the current release only (and will not be made compatible with previous ISS45 releases).
221026	APL Item Import Limits	APL Item Import Limits is available for the current release only (and will not be made compatible with previous ISS45 releases).
223857	Post WIC Pre-Authorization Swipe Prevention	Post WIC Pre-Authorization Swipe Prevention is available for the current release only (and will not be made compatible with previous ISS45 releases).





**© StoreNext Retail Technologies LLC 2011**

StoreNext Retail Technologies LLC endeavors to ensure that the information in this document is correct and fairly stated but does not accept liability for any error or omission.

The development of StoreNext products and services is continuous and published information may not be up to date. It is important to check the current position with StoreNext. This document is not part of a contract or license save insofar as may be expressly agreed.