



ISS 45

 *Release Notes & What's New*

ISS45 8.1.5.0-050



ISS45 Release Notes & What's New

Date of Issue	Product ID Num.	Part Number	Brief Description
January 2005	45001/081	89000195	Initial Release
Other Releases: 89000233, 89000263, 89000263, 89000308, 89000308			
July 2007	45001/081	89000401	8.1.2.1 Release
December 2007	45001/081	89000401	8.1.2.1-070 Release
January 2008	45001/081	89000417	8.1.2.1-070 Release – Updated
January 2008	45001/081	89000416	8.1.3.0-050 Release
November 2008	45001/081	89000480	8.1.3.2-050 Release
March 2009	45001/081	89000490	8.1.4.0-050 Release – Prelim
April 2009	45001/081	89000508	8.1.4.0-050 Release – Final
August 2009	45001/081	89000521	8.1.4.0-080 Release
September 2009	45001/081	89000532	8.1.4.1-050 Release
February 2010	45001/081	89000547	8.1.5.0-050 Release

**© Copyright StoreNext Retail Technologies LLC 1995-2010
All rights reserved**

This publication is protected by federal copyright law. No part of this publication may be reproduced or transmitted into any human or computer language in any form or by any means, stored in a retrieval system, transmitted, redistributed, translated or disclosed to third parties, or de-compiled in any way including, but not limited to, photocopy, photograph, electronic, mechanical, magnetic or manual without the express written permission of StoreNext Retail Technologies LLC or its licensors, if any. All copies, so authorized, shall contain a full copy of this copyright notice.

StoreNext Retail Technologies LLC endeavors to ensure that the information in this document is correct and fairly stated but does not accept liability for any error or omission. StoreNext Retail Technologies LLC makes no representation or warranties with respect to the contents hereof, and specifically disclaims any implied warranties of merchantability or fitness for a particular purpose or non-infringement. No commitments by StoreNext or its suppliers are made from this documentation which is provided for information only.

Development of StoreNext products and documentation is continuous: StoreNext Retail Technologies LLC reserves the right to revise this publication and to make changes from time to time in the contents hereof or in the products herein described or discussed without notice and without any obligation of StoreNext Retail Technologies LLC to notify any person or organization of such revision or changes. Information published in this document will likely become obsolete over time and it is recommended that users regularly check for updates and newer versions.

StoreNext Retail Technologies LLC has prepared this manual for use by users, authorized third parties and personnel of StoreNext Retail Technologies LLC as a guide to the proper installation, operation, customization and/or maintenance of StoreNext Retail Technologies LLC equipment and software. The drawings and specifications contained herein are the property of StoreNext Retail Technologies LLC and/or its licensors.

Third-party products, services, or company names referenced in this document may be trademarked or copyrighted by their respective owners, and are for identification purposes only.

Copyrights, trademarks and license agreements shall be governed and construed in accordance with the laws of the State of Texas and the Federal Arbitration Act, and shall benefit Retailix, its successors, and assigns.

Address comments and corrections to:

**Software Program Director
StoreNext Retail Technologies LLC
6100 Tennyson Parkway / Suite 130 / Plano, Texas 75024**

Table of Contents

Table of Contents	i
Introduction	1
11271 – Duplicate POS Numbering Protection (Sys)	2
11795 – EAN-128 Gift Card Barcode Scan Enforcement (POS)	4
11796 – Duplicate Gift Card Sale Prevention (POS).....	6
12104 – New Linked Items Maintenance (FO/POS/Sys)	7
12552 – Password Restriction Disabling (FO)	16
Other Enhancements	17

Introduction

Several new features and enhancements were made recently to the StoreNext ISS45 system as a result of customer change requests and internal research and development. These changes are reflected in the accompanying ISS45 8.1.5.0-050 software.

The Change Request Document (CRD) number assigned to each enhancement is listed in the description heading. Following the change description is an abbreviation (or combination thereof) of the ISS45 area affected:

(FO) – Front Office

(POS) – WinPOS

(Fuel) – Fuel

(Sys) – System / Services

If you have any questions regarding this release, please contact StoreNext Support.

11271 – Duplicate POS Numbering Protection (Sys)

A new MAC (Media Access Control) Address Utility and Terminal ID Wizard found in this release will simplify the customization of an imaged POS terminal and guard against terminals being allowed to be started with duplicate terminal IDs.

Note:

Imaging tools are used by retailers to rebuild POS Terminals after hardware failure.

MAC Address Utility

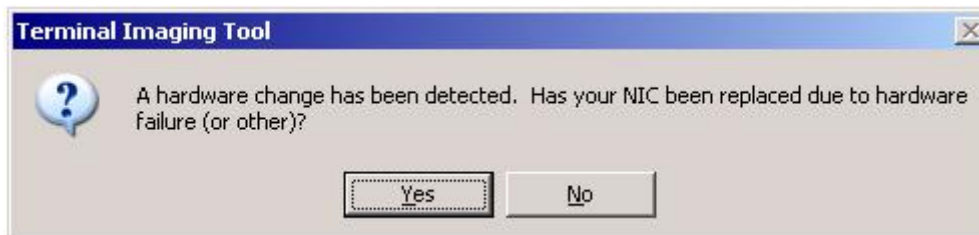
The MAC Address Utility will detect if the MAC address of the terminal has changed since the terminal services were last loaded. If the utility detects a change, services will not be allowed to load and a flag will be created that indicates that the MAC address has changed.

Note:

The MAC Address of the PC will be stored in a new registry key. If the key exists and its value is different then the MAC address of the PC, the utility will postpone the loading of the services and create a flag in the \Program Files\POSWare\WinPOS\Flag folder called NewMAC.fig.

Terminal ID Wizard

In the event that a change in the MAC address is detected, the Terminal ID Wizard will be called by RunPOS32.bat. The following prompt will display to the user.



If “Yes” is selected, the wizard will update the registry with the new MAC address, exit and force a reboot. If “No” is selected, the following prompt will display:



When the desired POS Number is selected and OK is pressed:

- The Network Properties application will be called to allow the user to configure the network settings (i.e. IP address) as needed.
- The HOST file will be launched via Notepad so that edits can be made as needed to support ISS45.
- A “q-empty” will be performed on the POSPRM.QDX file to force a cold load on the next startup.
- The registry will be updated with the new MAC Address
- The flag indicating the MAC Address has changed will be removed.
- The wizard will force a reboot.

11795 – EAN-128 Gift Card Barcode Scan Enforcement (POS)

WinPOS has been changed in this release to enforce the scan of a Gift Card's EAN-128 barcode when sold. When EAN-128 Gift Cards are set up correctly in Barcode Programming Maintenance (see below) and the Gift Card's UPC-A barcode (rather than the EAN-128 barcode) is scanned at purchase, the POS now aborts the sale of the item and an error message displays.

In previous releases there was no built-in functionality that prevented the cashier from accidentally scanning the UPC-A barcode. Since this barcode contains the item number that is associated with the Gift Card in the PLU Maintenance, the card would be sold but never activated. With this new functionality the cashier receives a message informing them that an invalid barcode was scanned and to scan the item again using the correct barcode.

Note:

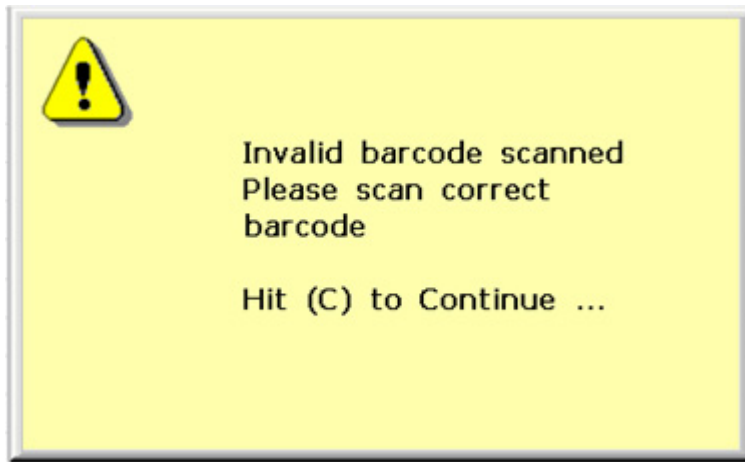
Most third-party vendor Gift Cards have a traditional UPC-A barcode printed on the outer packaging in addition to the EAN-128 barcode on the card itself.

Required Setup

For each Vendor Gift Card item previously established in Barcode Programming Maintenance, an additional Barcode Range setting is required in Barcode Programming Maintenance using the following fields:

- **Barcode Prefix From:** Gift Card UPC Number
- **Barcode Prefix To:** Gift Card UPC Number
- **Barcode Length:** 10
- **Barcode Type:** Gift Card Activation
- **Activation Type:** EAN 128
- **Account # Length:** 0

When this new record is added Barcode Programming Maintenance and the Gift Card UPC is scanned, the POS will check to see if the length of the parsed account number is zero. If so an error message is presented to the cashier that the PLU is invalid.

**Note:**

Each existing Vendor Gift Card should have a separate Barcode Activation record for its "normal" Activation (with a Barcode Length typically set to 29 and the Account # Length field set to either 19 or 20 that includes the lengths of both the PLU and the Account Number).

When adding a new Vendor Gift Card, add both the activation barcode range and the separate UPC barcode range with the Account # Length field set to 0.

11796 – Duplicate Gift Card Sale Prevention (POS)

A Control Check will now be issued in this release to prevent a cashier from scanning the same EAN 128 Gift Card twice in a transaction. In previous releases, if the same Gift Card was accidentally sold twice in a sales transaction (rather than two different EAN 128 Gift Cards), the second Gift Card did not activate (and no indication was given to the cashier which card did not activate). Now when scanning an EAN 128 Gift Card, ISS45 checks the Gift Card Item Number and Account Number against any previously sold (to ensure it is unique).

Note:

MTXEPS OpenEPS 825.3 ensures proper activation of MSR-based Gift Card when multiple cards are purchased in a transaction. MSR-based Gift Cards require two-passes at the POS (one for sale, one for activation). When an MSR-based Gift Card is scanned for activation, MTXEPS compares the Item Number (in the scanned Track 1 data) with the requested item number. If they are the same, activation continues. If they are different, the activation is aborted.

12104 – New Linked Items Maintenance (FO/POS/Sys)

A new feature in this ISS45 release provides an alternative way of linking items, allowing the creation of up to 9,999 (Link Items) codes that can be attached to items in PLU Maintenance and PLU Batch Maintenance. Previously the system was limited to 251 Return Types (using Return Type Maintenance).

The new Linked Items Maintenance program is used to establish groups of one or more items (deposits and/or fees). When a PLU with a Link Items Code is sold or returned, all the deposits and/or fees attached to the link item are automatically added or removed from the ticket (respectively).

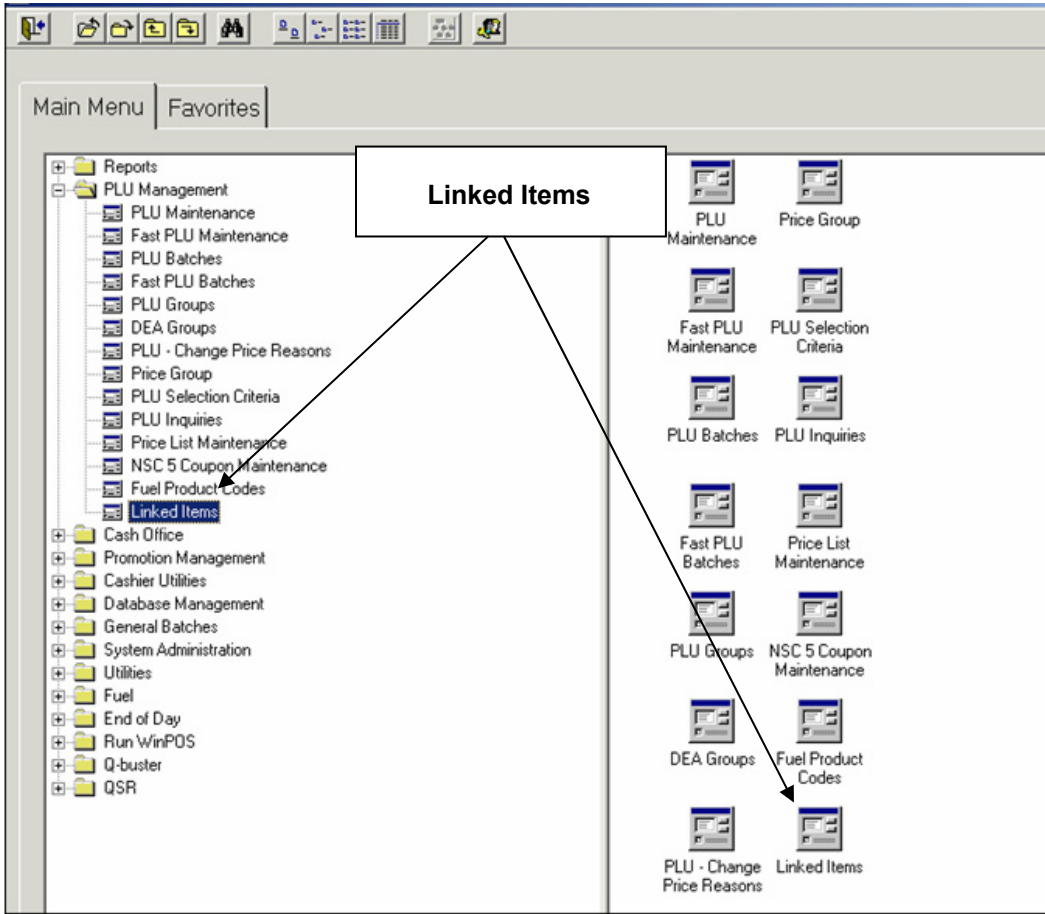
Note:

Bottle Deposits can also be attached to Return Types in Return Type Maintenance and linked to a PLU using the Return Code field in PLU Maintenance (Parameters 2 Tab). All current Link Item Return Type functionality remains unchanged and can still be utilized.

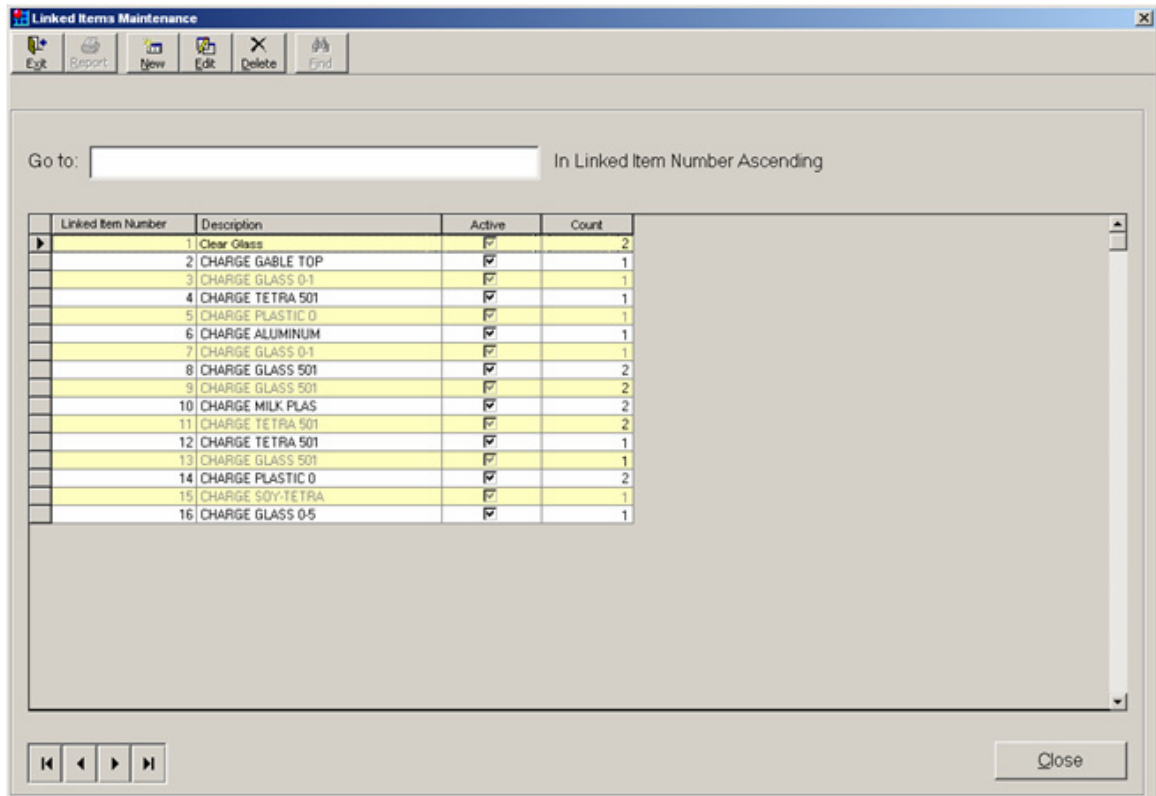
Front Office

New Linked Items Menu Option

The PLU Management folder holds the new Linked Items menu selection.



Once the application is launched from the PLU Management folder, the Linked Items screen displays.



➤ **To add a new Linked Items code:**

- 1 Click the **New** button. The Linked Items Maintenance window appears:

Number: Description: Active

Item ID	Description
---------	-------------

Add Link
Remove Link
Remove All

Navigation: [Home] [Left] [Right] [End] OK Cancel Apply

- 2 Enter an unused Linked Item code in the **Number** field.
- 3 Enter a description code in the **Description**.
- 4 Click the **Active** flag to set the link active.

Note:

If the Active flag is unchecked, the Link will be ignored for any PLU items with this link.

- 5 Click the **Add Link** button. The PLU Item Selector window displays:

The PLU Item Selector dialog box features a 'Category' tab with a search field containing 'Select One Item'. On the left, there are radio buttons for 'Item', 'Mix & Match', 'Exclude items', 'Item Like', 'Department', 'Sub Department', and 'Vendor'. The 'Item' option is selected. A large empty list box is in the center. On the right, there are buttons for 'Select', 'Un-Select', 'Load Filter', and 'Save Filter'. At the bottom are 'OK' and 'Cancel' buttons.

- 6 Enter the PLU number of the “link to” item (i.e. deposit, fee, etc.) and click **OK**. The item will be added to the Linked Items Maintenance list:

The Linked Items Maintenance dialog box has a 'Number' field with '1' and a 'Description' field with 'Clear Glass'. There is a checked 'Active' checkbox. Below is a table with columns 'Item ID', 'Description', and 'Bottle Deposit'.

Item ID	Description	Bottle Deposit
895	Bottle Deposit	<input type="checkbox"/>
896	Environmental Fee	<input type="checkbox"/>

Buttons on the right include 'Add Link', 'Remove Link', and 'Remove All'. At the bottom are navigation arrows, 'OK', 'Cancel', and 'Apply' buttons.

Note:

In the PLU Item Selector, you may select a different category search type, key in the search criteria and press **Enter**. Click the **Select One Item** Tab to see the results list of items from which to choose.

Item Number	Description
1111	Bottle Deposit

Highlight the desired item from the list and click **OK**. If more than one item is selected at a time, the follow error message displays:



Note:

You can remove a previously selected (highlighted) item clicking the **Remove Link** button (or remove all listed items by pressing **Remove All**).

- 7 (Optional) Click (check) the Bottle Deposit flag to indicate the link is a bottle deposit.

Note:

When items are sold with linked items flagged as “Bottle Deposits”, sales are reported in the Bottle Deposits totals on the Store Sales Report. Likewise, when items are returned with linked items flagged as “Bottle Deposits”, Bottle Deposits totals are credited on the Store Sales Report.

- 8 Repeat steps 5 through 7 if you wish to add multiple items (i.e. deposits, fees, etc.) to the link.
- 9 When finished, click **OK** to return to the Linked Items screen (displaying the new Linked Item Code).

Note:

Deleting the Linked Item Code from this screen deletes the attachment to Linked Items in PLU Maintenance (Parameters 2 Tab).

New PLU Maintenance Field

In support of this feature, the new “Linked Items” field has been added to the Parameters 2 Tab of both the PLU Maintenance and PLU Batch Item Maintenance Screens:

PLU Maintenance

Item Number: 1200000016

Description: Briars Barnyard POP

Basic Setup | Parameters 1 | Parameters 2 | Cost and Sales | Promotions | Shelf Labels and OEM | Price Lists

Additional Links

Mix and Match : 0 ...

Tare Weight: [Dropdown]

Discount: [Dropdown]

Return Code: [Dropdown]

POST Item Message: [Dropdown]

DEA Group: [Dropdown]

EAN 99 Coupon: [Dropdown]

Bulk Tax Group: [Dropdown] ...

Linked Items: 1 - Clear Glass

Price Comparison

Description: [Text Box]

Type: No Comparison is to be done [Dropdown]

Comparison Date: MM/DD/YYYY [Dropdown]

Price: 0.00 [Text Box]

Quantity: 0 [Text Box]

New "Linked Items" field in PLU Maintenance.

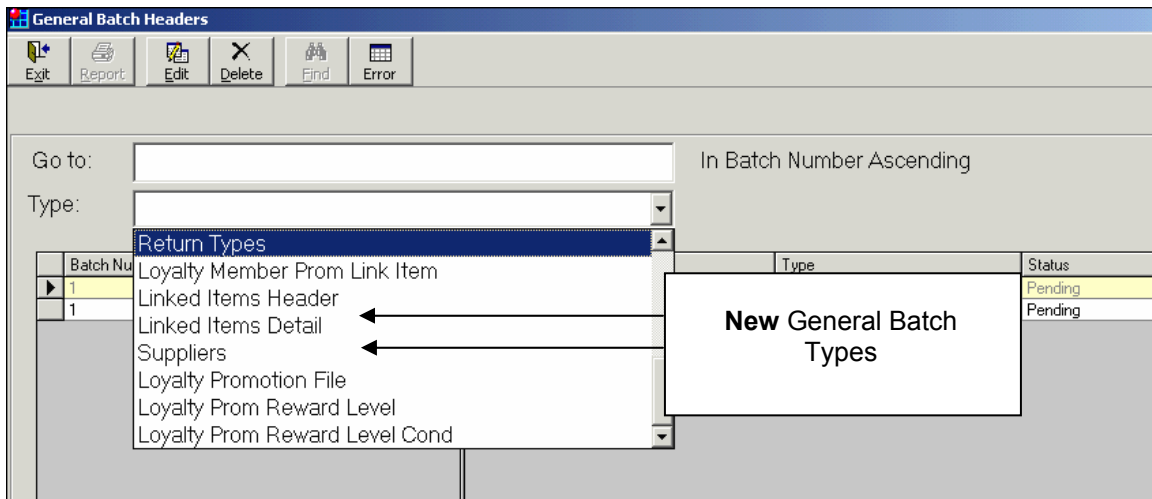
Field	Description
Linked Items	Click the field selection arrow and choose the Link Items Code to assign to the item.

Note:

Maintenance on the Linked Item field cannot be performed using Fast PLU Maintenance or Fast PLU Batches.

New General Batch Types

In ISS45 sites that are hosted using General Batches, two new Batch Types are supported in this release: **Linked Items Header** and **Linked Items Detail**.



POS

The POS now performs the following validations when a PLU with a Linked Item Code is **sold**:

- If Linked Items Code exists, but no corresponding Linked Items records exist, the POS will proceed without implementing link sale logic.
- If Linked Item Code exists but the Linked Items record is not linked to a PLU, the POS will proceed without implementing link sale logic.
- If Linked Items Code exists and Linked Items record is linked to a single PLU or multiple PLUs, the POS will sell the Link Item PLU(s).
 - If any of the Link Item PLUs are flagged as Bottle Deposits, the Bottle Deposit bit is set in the TLOG.

Note:

The Link Items PLU will follow current functionality and continue to use its associated tax flags (as set in PLU Maintenance).

Likewise, the POS performs the following validations when a PLU with a Linked Item Code is **returned**:

- If Linked Items Code exists, but no corresponding Linked Items records exist, the POS will proceed without implementing link return logic.
- If Linked Item Code exists but the Linked Items record is not linked to a PLU, the POS will proceed without implementing link return logic.
- If Linked Items Code exists and Linked Items record is linked to a single PLU or multiple PLUs, the POS will refund the Link Item PLU(s).

- If any of the Link Item PLUs are flagged as Bottle Deposits, the Bottle Deposit bit is set in the TLOG.

System

The new LINKED_ITEMS_HDR and LINKED_ITEMS_DTL tables are now part of the cyclic redundancy check (PCMCRC).

Note:

PCMCRC compares the QDX and SQL tables as part of the system integrity phase of end-of-day processing.

12552 – Password Restriction Disabling (FO)

In ISS45 8.1.4.1-050, security requirements were added to ISS45 passwords as part of the PCI (Payment Card Industry) compliance initiative. A new General System Parameter in this release provides the option to ignore rules specifically related to password expiration, expiration warnings and consecutive incorrect password entry (without disabling the password).

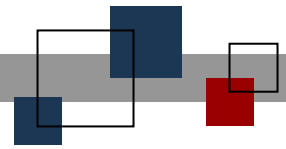
New Parameter

As part of this feature a new parameter has been established. The following General System Parameter is located in the Store \ Front Office \ System \ Security folder.

Parameter	Explanation
Disable Password Lockout / Expiration	<p>When this parameter is set to “Yes”, the system will allow users to login if their password has been locked or expired.</p> <p>Note: The password requirements regarding length, upper case/lower case and special characters (a.k.a. Strong Passwords) remain in effect regardless of this setting.</p>

Other Enhancements

- CR 12169 – For Manual Price items, the Percentage Override function now brings up the Percent Override Screen after the new price is entered. In previous releases, the Percent Override Screen appeared first, displaying a price or \$0.00 (which could not be discounted).



© StoreNext Retail Technologies LLC 2010

StoreNext Retail Technologies LLC endeavors to ensure that the information in this document is correct and fairly stated but does not accept liability for any error or omission.

The development of StoreNext products and services is continuous and published information may not be up to date. It is important to check the current position with StoreNext. This document is not part of a contract or license save insofar as may be expressly agreed.