



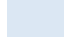




-  *ISS45 Fuel System*
-  *Installation Guide*
-  *ISS45 Version 8.1.5.2*
- 
- 

ISS45 Fuel System Installation Guide

Date of Issue	Product Identification Number	Part Number	Brief Description
May 2011	45001/017	89000644	8142 Release

**©Copyright StoreNext Retail Technologies LLC 1995-2011
All rights reserved**

This publication is protected by federal copyright law. This document and its contents are the proprietary, confidential information and property of StoreNext. Unauthorized disclosure, reproduction, distribution or use of this document and/or its contents in any form is strictly prohibited. No part of this publication may be reproduced or transmitted into any human or computer language in any form or by any means, stored in a retrieval system, transmitted, redistributed, translated or disclosed to third parties, or de-compiled in any way including, but not limited to, photocopy, photograph, electronic, mechanical, magnetic or manual without the express written permission of StoreNext Retail Technologies LLC or its licensors, if any. This document, notwithstanding the above, may be distributed in electronic or printed form to personnel who are employed by either (1) a StoreNext customer of the subject system of this document or (2) personnel from an authorized StoreNext dealer of the subject system of this document. All copies, so distributed and/or so authorized, shall contain a full copy of this copyright notice.

StoreNext Retail Technologies LLC has prepared this manual for use by users, authorized third parties and personnel of StoreNext Retail Technologies LLC as a guide to the proper installation, operation, customization and/or maintenance of StoreNext Retail Technologies LLC equipment and software. The drawings and specifications contained herein are the property of StoreNext Retail Technologies LLC and/or its licensors.

StoreNext Retail Technologies LLC endeavors to ensure that the information in this document is correct and fairly stated but does not accept liability for any error or omission. StoreNext Retail Technologies LLC makes no representation or warranties with respect to the contents hereof, and specifically disclaims any implied warranties of merchantability or fitness for a particular purpose or non-infringement. No commitments by StoreNext or its suppliers are made from this documentation which is provided for information only.

Development of StoreNext products and documentation is continuous: StoreNext Retail Technologies LLC reserves the right to revise this publication and to make changes from time to time in the contents hereof or in the products herein described or discussed without notice and without any obligation of StoreNext Retail Technologies LLC to notify any person or organization of such revision or changes. Information published in this document will likely become obsolete over time and it is recommended that users regularly check for updates and newer versions.

The trademarks StoreNext and Retailix are registered trademarks or trademarks of Retailix; all other trademarks or registered trademarks are the property of their respective owners. Third-party products, services, or company names referenced in this document may be trademarked or copyrighted by their respective owners, and are for identification purposes only.

Copyrights, trademarks and license agreements shall be governed and construed in accordance with the laws of the State of Texas and the Federal Arbitration Act, and shall benefit Retailix, its successors, and assigns.

Address comments and corrections to:

StoreNext Retail Technologies LLC
Software Program Director
797 Commonwealth Drive
Warrendale, PA 15086

Table of Contents

Table of Contents	1
ISS45 V8 Fuel Installation	2
Fuel Installation Process	2
Load or Upgrade ISS45	3
Load or Upgrade WinEPS	3
MSXML.msi Component	3
(New Installs) – Install PFS Components (PFS1)	3
Configure Fuel Control Center (FCC)	18
Configure ISS45 Back Office for Fuel	18
Install Secondary PFS2 (Optional)	21
(For New Installs) – Install POSpump on all POS Workstations Configured to Run Fuel.....	22
(PFS Upgrades) – Install FCC_Preupgrade.reg, POSpump_PreUpgrade.reg and PFS PumpSrv_PreUpGrade.reg	26
(POS Upgrades) – Install POSpump (on all Fuel POS Lanes)	29

ISS45 V8 Fuel Installation

Fuel Installation Process

The steps below are *general* checklist steps that are defined in more detail in the following sections.

Step 1: Load or upgrade to ISS45 and patch to current version.

Step 2: Load or upgrade WinEPS to current version.

Step 3: Install MSXML.msi located on the ISS45 Distribution CD in the **Fuel_1023 \ XML** folder.

Step 4: (For New Installs) Install each of the Fuel Components on the PFS (and PFS2 if applicable) by running each of the following executables located on the CD in the **Fuel_1023 \ Full Installs** folder (where xx.xxx.xx is the current version):

- Fuel(PumpSrv)_Package_xx.xx.xxx.exe
- Setup[xx.xx.xxx] - Fuel - FCC.exe
- Fuel(POSPump)_Package_xx.xx.xxx.exe

Step 5: Configure Fuel Control Center (FCC).

Step 6: Configure ISS45 Back Office for Fuel.

Step 7: Configure Secondary PFS2 (Optional).

Step 8: (For New Installs) – Install POSPump (on all Fuel POS lanes).

Step 9: (PFS Upgrades) Install **PFSPumpSrv_PreUpgrade.reg**, **POSpump_PreUpgrade.reg** and **FCC_Preupgrade.reg** located on the ISS45 Distribution CD in the **Fuel_1023 \ PreUpgrade** folder. Once the Preinstall.reg files have been executed the following packages on the CD in the **Fuel_1023 \ Upgrade** folder need to be installed:

- Fuel(PumpSrv)_Package_xx.xx.xxx.exe (where xxx is the current version)
- Fuel(PosPump)_Package_xx.xx.xxx.exe (where xxx is the current version)
- Fuel(FCC)_Package_xx.xx.xxx.exe (where xxx is the current version)

Step 10: (For Upgrades) – Install POSPump upgrade (On all Fuel POS lanes).

Load or Upgrade ISS45

- 1 Install ISS45 from the ISS45 Distribution CD.
- 2 Install ISS45 V8 Patches for latest version.
- 3 Restore or build V8 SQL and QDX databases.

Load or Upgrade WinEPS

- 1 Install \ Upgrade current version of WinEPS from MTXEPS CD.

MSXML.msi Component

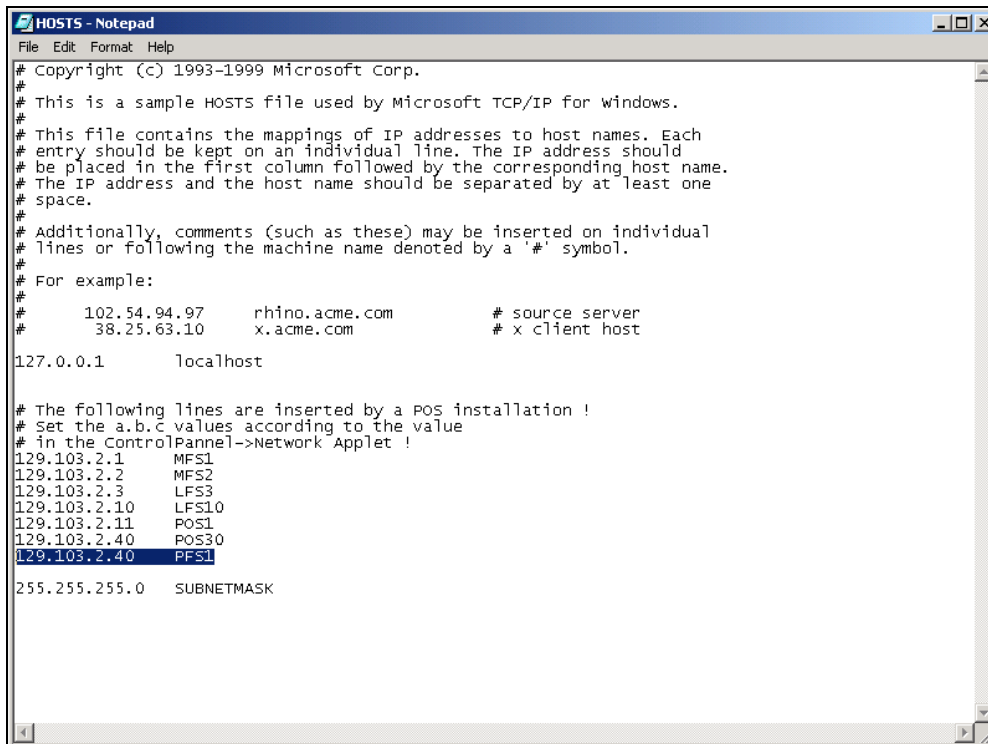
- 1 Install MSXML.msi located on the in the **Fuel_1023 \ XML** folder from the ISS45 Distribution CD.

(New Installs) – Install PFS Components (PFS1)

Note:

It is important to have all hardware components MFS1 and MFS2 and PFS1 and PFS2 on the LAN and loaded with ISS45 software before installing PumpSrv, PosPump and FCC. This allows registry entries to be written to those devices during the install of the three fuel components.) The install shield will populate the correct registry keys if the administrator user names and passwords are the same on all computers connected to fuel (MFS, PFS, POS).

- 1 Install WinPOS on **PFS1** from the ISS45 Distribution CD.
- 2 Install ISS45 latest patches for this version of ISS45 software.
- 3 Sign in to ISS45 Back Office.
- 4 Select System Administration -> POS Setup -> POS Configuration and select the POS terminal number that has the PFS software installed.
- 5 Check **Active Till** and **Print Text to Transaction File** (General Tab).
- 6 Edit the Hosts file (located in the WINNT \ system32 \ drivers \ etc folder) and add a line for the IP Address of PFS1.



```
# Copyright (c) 1993-1999 Microsoft Corp.
#
# This is a sample HOSTS file used by Microsoft TCP/IP for Windows.
#
# This file contains the mappings of IP addresses to host names. Each
# entry should be kept on an individual line. The IP address should
# be placed in the first column followed by the corresponding host name.
# The IP address and the host name should be separated by at least one
# space.
#
# Additionally, comments (such as these) may be inserted on individual
# lines or following the machine name denoted by a '#' symbol.
#
# For example:
#
#       102.54.94.97       rhino.acme.com   # source server
#       38.25.63.10      x.acme.com     # x client host

127.0.0.1          localhost

# The following lines are inserted by a POS installation !
# Set the a.b.c values according to the value
# in the ControlPanel->Network Applet !
129.103.2.1       MFS1
129.103.2.2       MFS2
129.103.2.3       LFS3
129.103.2.10      LFS10
129.103.2.11      POS1
129.103.2.40      POS30
129.103.2.40      PFS1
255.255.255.0     SUBNETMASK
```

- 7 Copy or edit the host file to MFS1, MFS2 and all POS that are running FUEL.
- 8 Edit WinPos.INI file (located in the \ Program Files \ WinPOS \ PosWare folder) on the POS Workstations and change **FuelInSystem** to **Yes**.

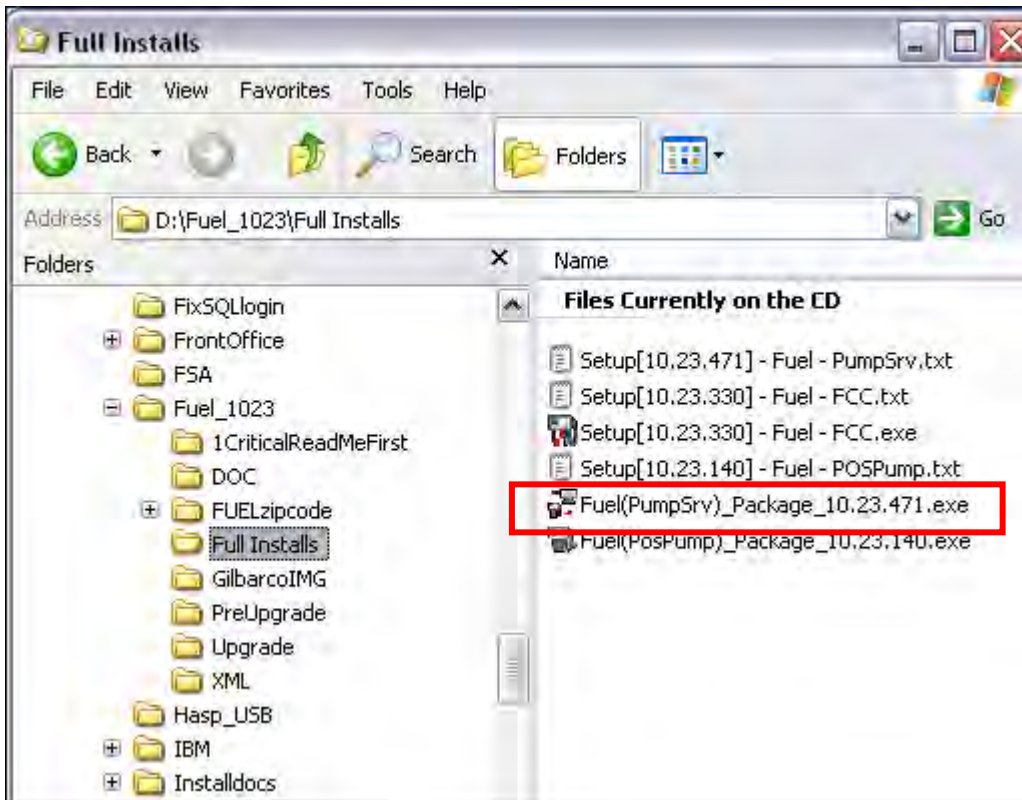


```
WinPos.INI - Notepad
File Edit Format View Help

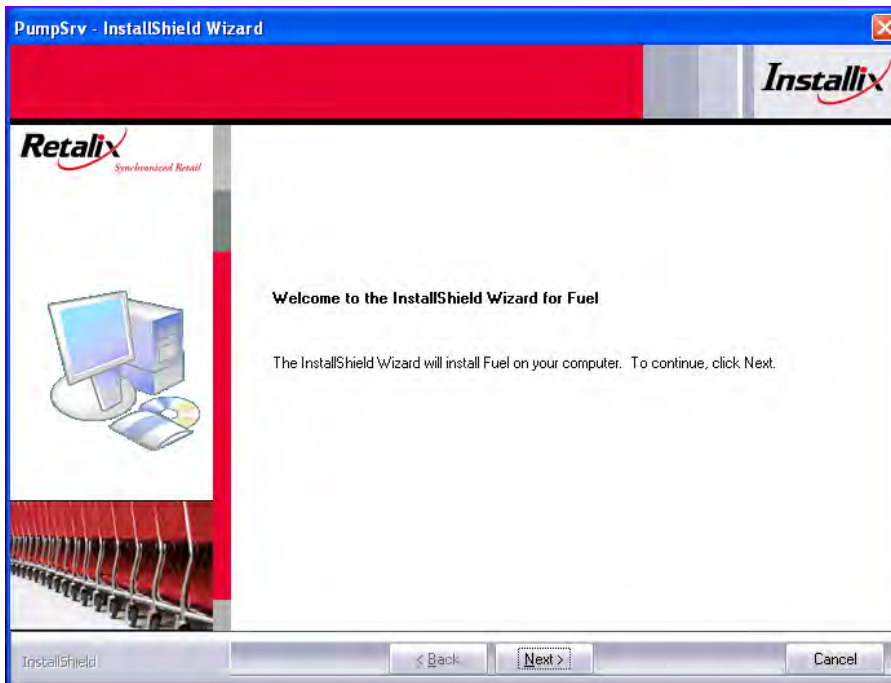
[Configuration]
Color=Yes
Colors=Max
Display=wideMenuPanel
Dual_VGA=No
2x20=No
DecimalPointEntry=Yes
ReceiptDisplayMode=Full
HitCtoContinue=Yes
DispMode800=Yes
MenuShiftKeys=Yes
ScreenScaling=No
FuelInSystem=Yes
TouchScreen=Yes
TouchOpposite=No
TouchPanelRows=5
TouchPanelColumns=2
ActiveStore=No
Dynakey=old
OldMCIVideoControl=No ;the default - active movie control
EftoutofSeqManual=yes ;Allow paying with cashier picked EFT tender
OldFastLoad=No
ShowCursor=Yes
```

- 9 Insert ISS45 V8 Installation CD.

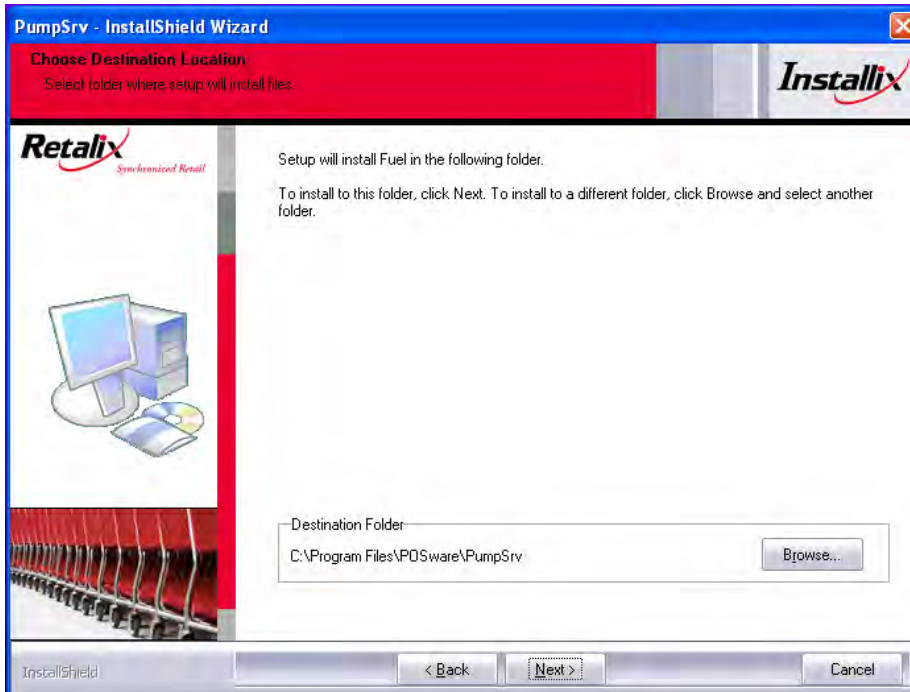
- 10 Explore to **\Fuel_1023 \ Full Installs** on the CD drive and double-click on **Fuel(PumpSrv)_xx.xx.xxx.exe** (where xx.xx.xxx is the latest install version).



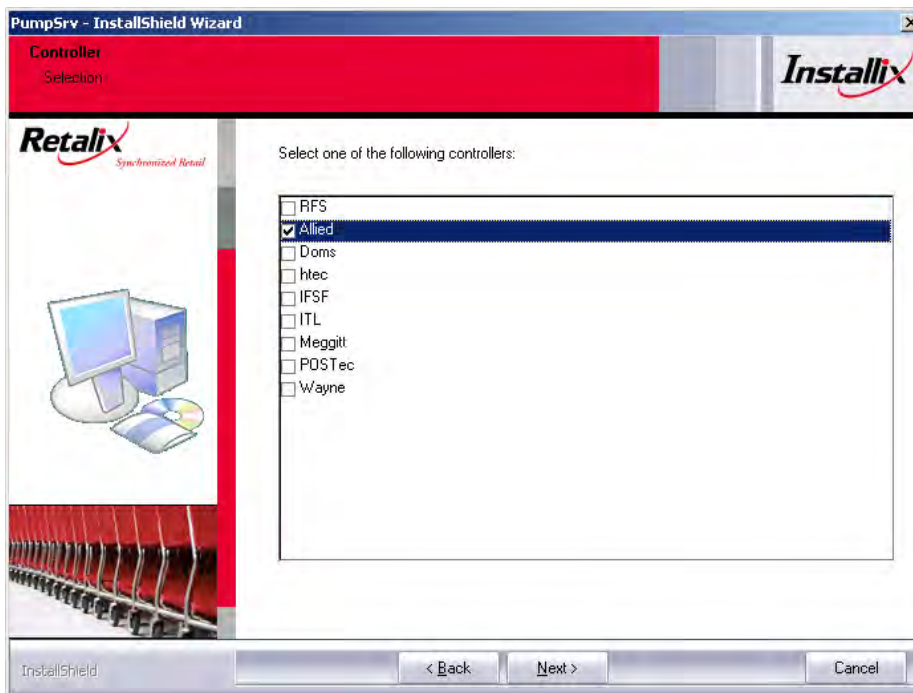
- 11 Click **Next** at the Welcome Screen.



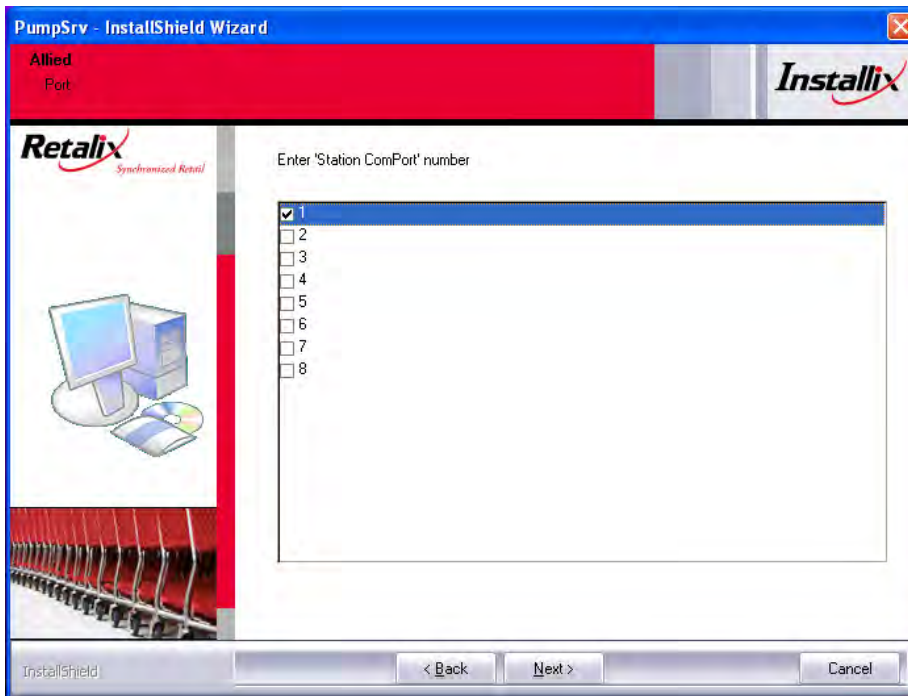
- 12 At the Choose Destination Location screen, click **Next**.



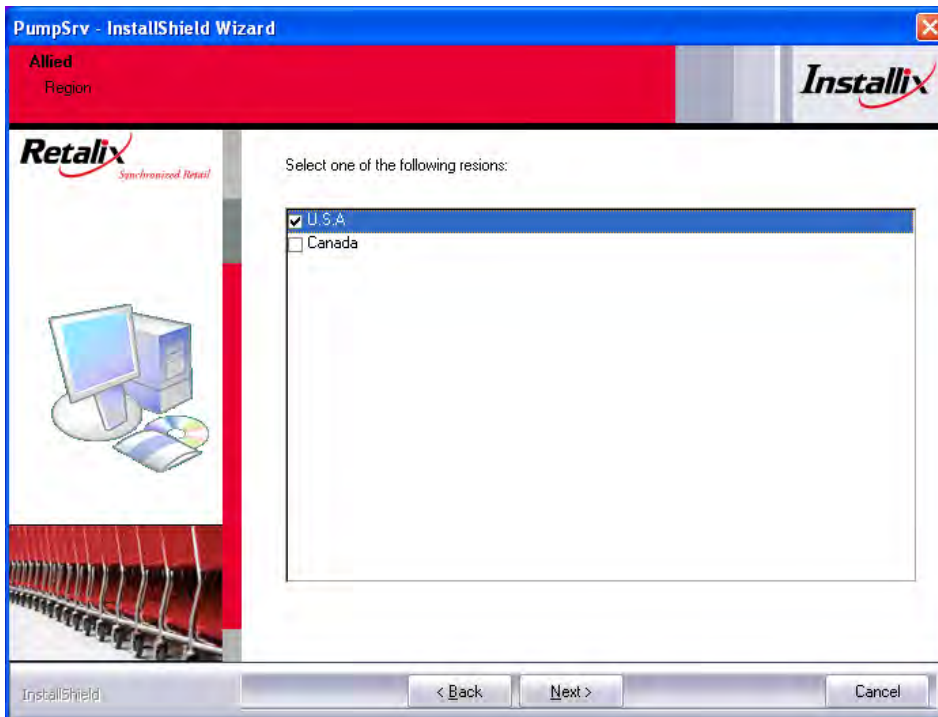
13 At the Controller Screen, select the “Allied” controller and click **Next** to continue.



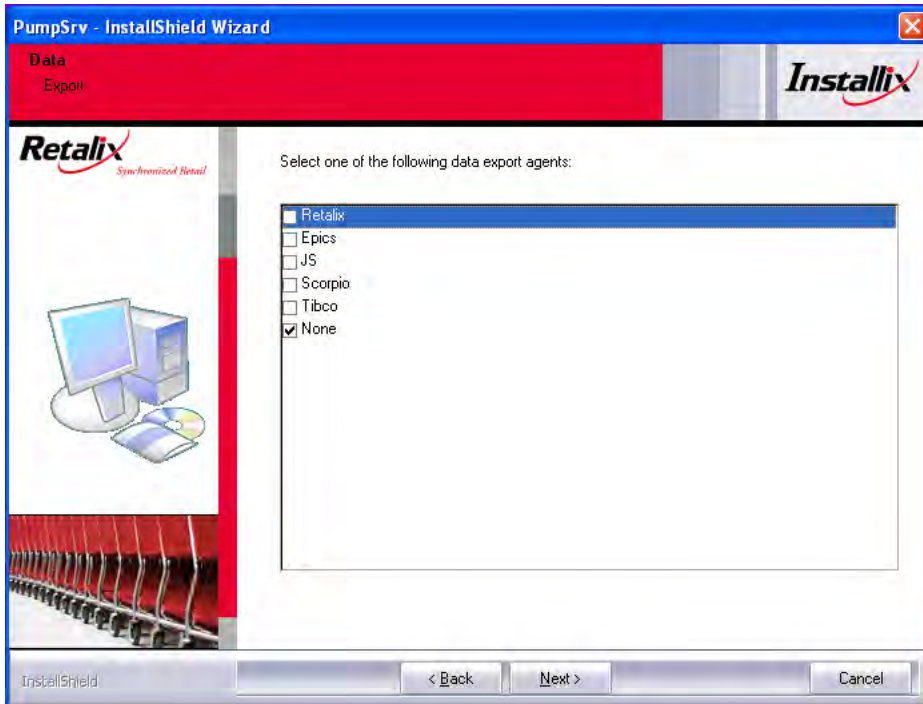
14 At the Port screen, select the station communication port number and click **Next**.



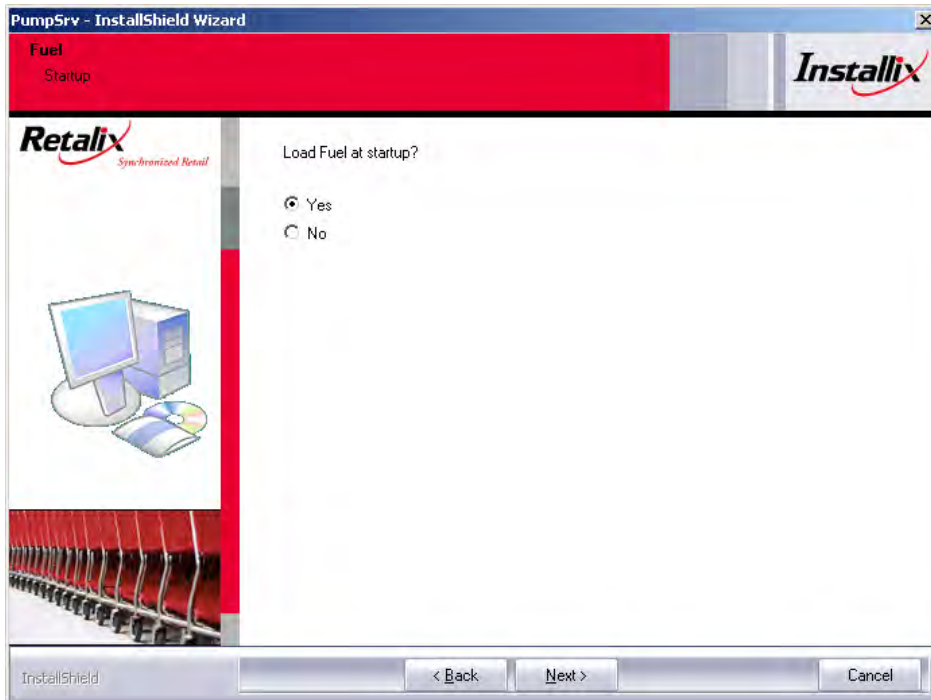
15 At the Region screen, select a country and click **Next**.



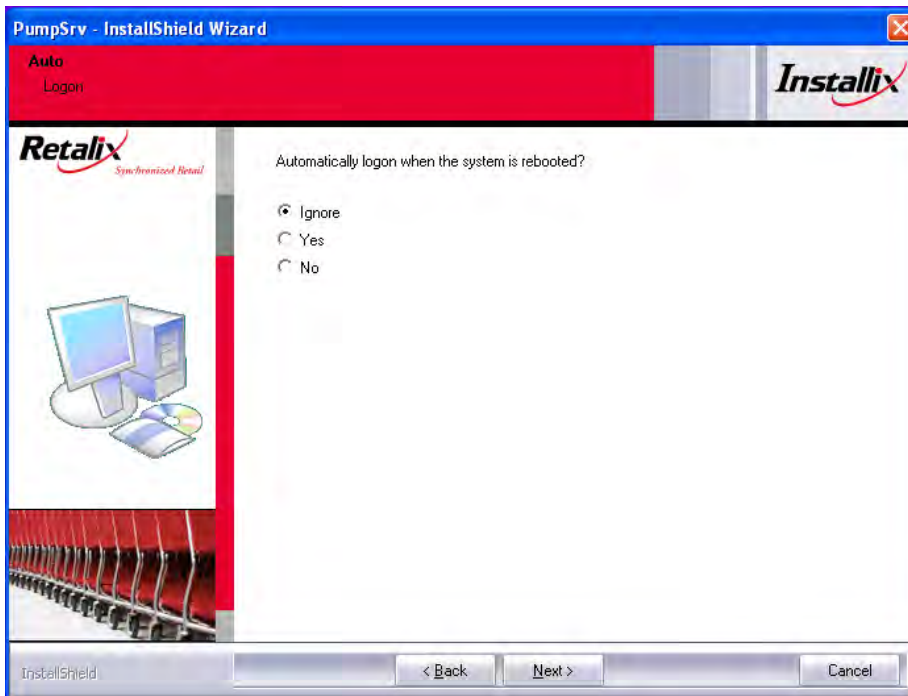
16 At the Export screen, select the desired export agent and click **Next**.



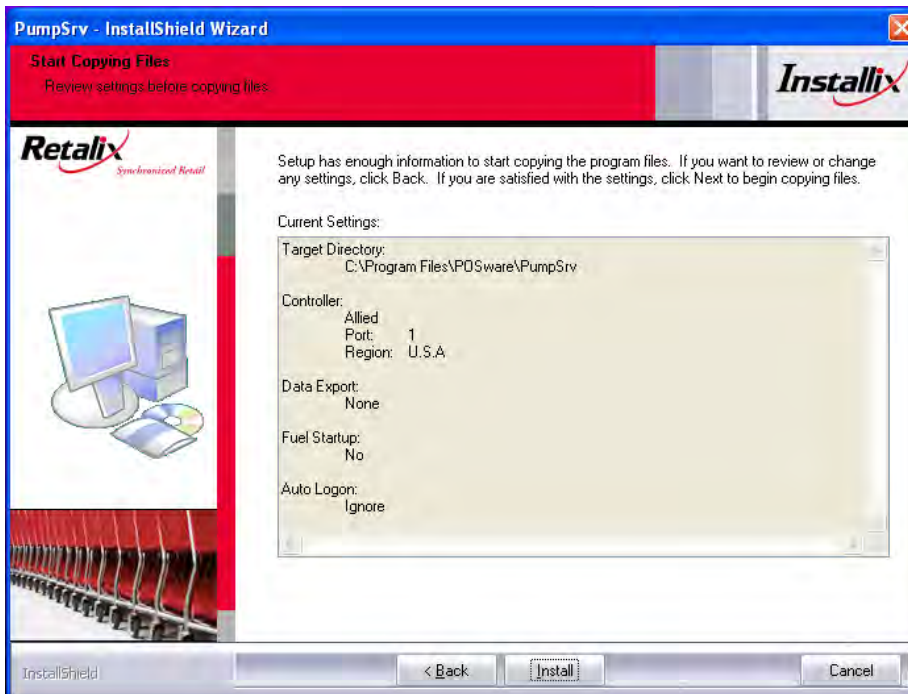
17 At the Startup screen, select “Yes” to load fuel at startup and click **Next**.



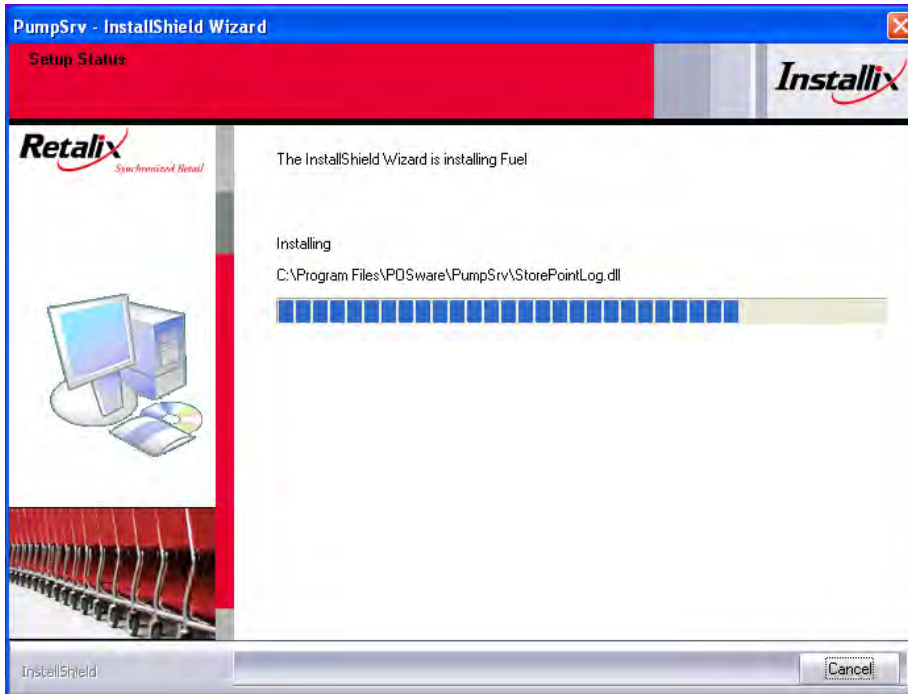
18 At the Logon screen, select the desired logon after reboot option and click **Next**.



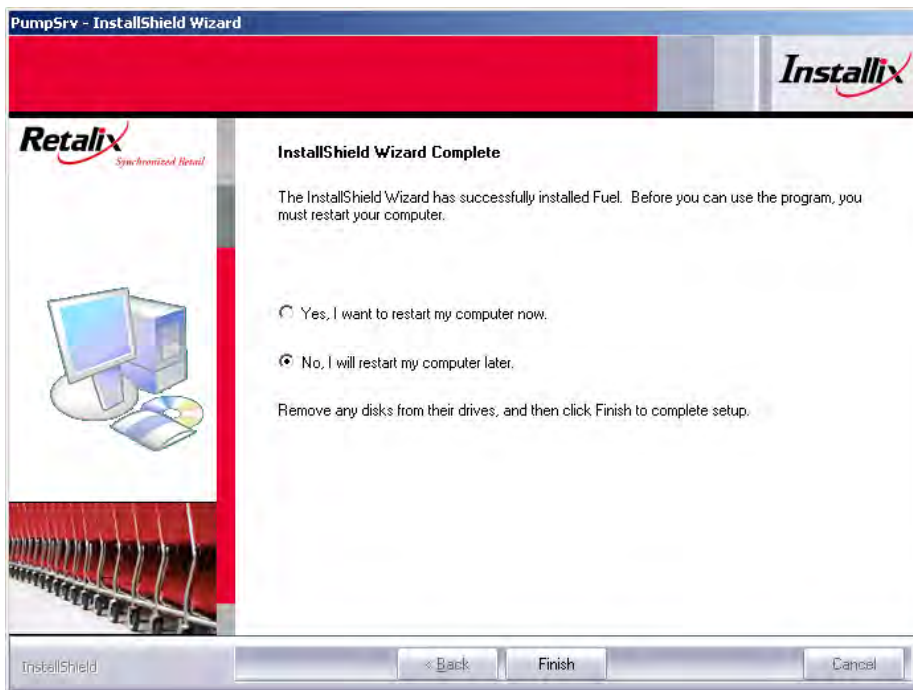
19 At the Start Copying Files screen, click **Install**.



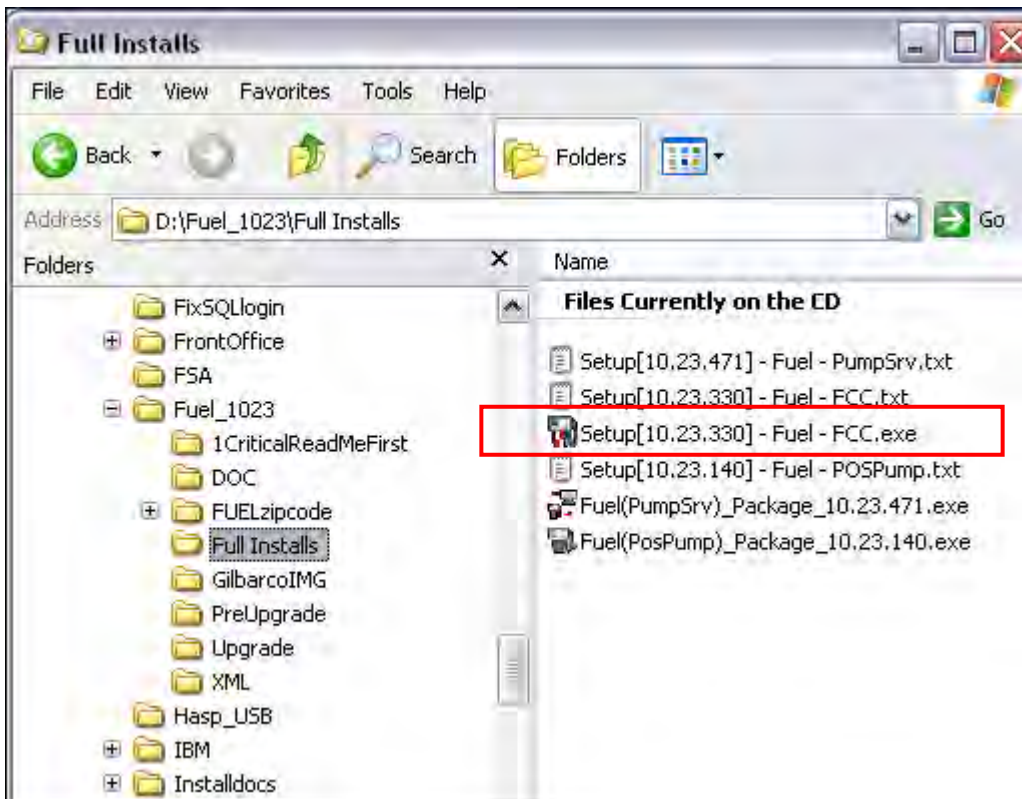
20 The Setup Status Screen displays the installation progress.



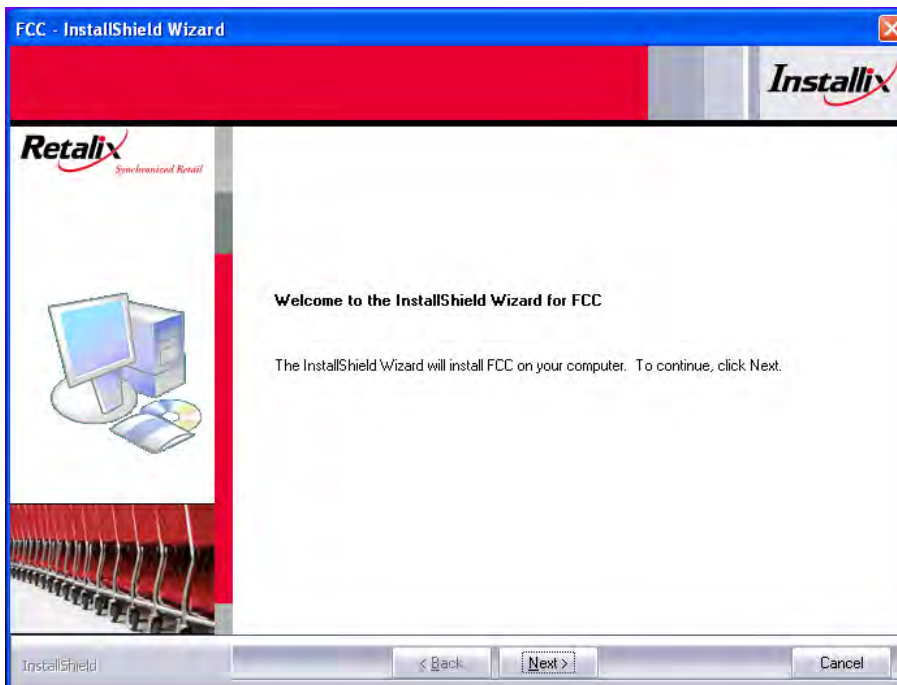
- 21 At the InstallShield Wizard Complete screen, select “No, I will restart my computer later” and click **Finish**.



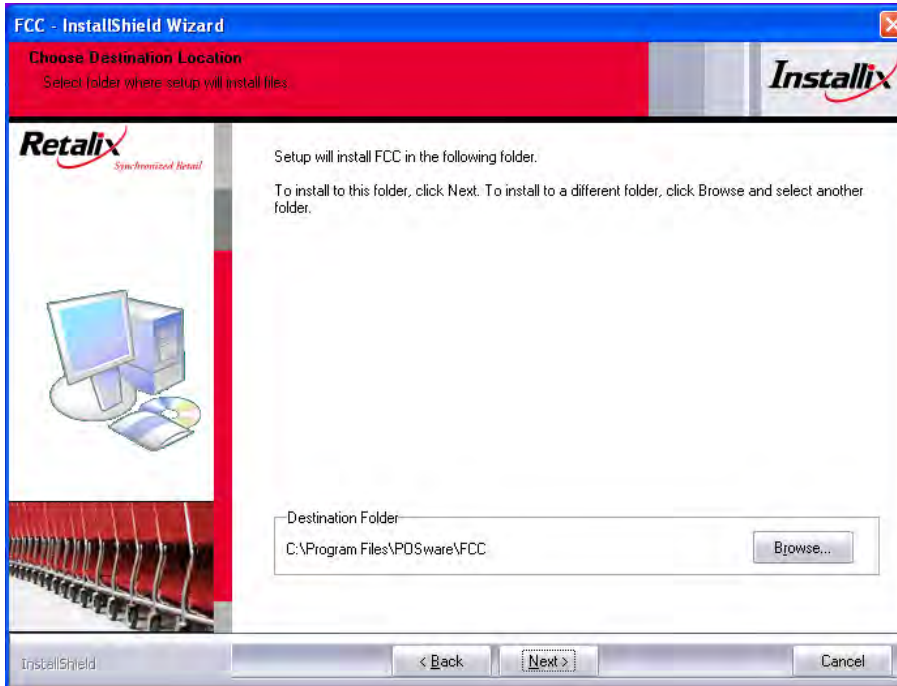
- 22 Explore to **\Fuel_1023 \ Full Installs** on the CD drive and double-click on **Setup[xx.xx.xxx] - Fuel - FCC.exe** (where xx.xx.xxx is the latest install version).



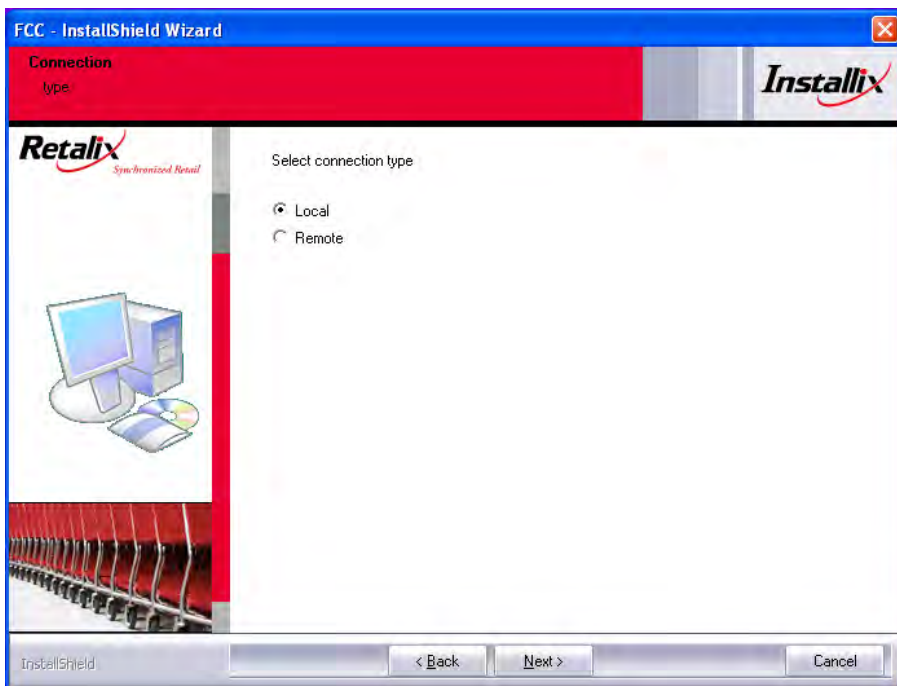
23 Click **Next** at the Welcome Screen.



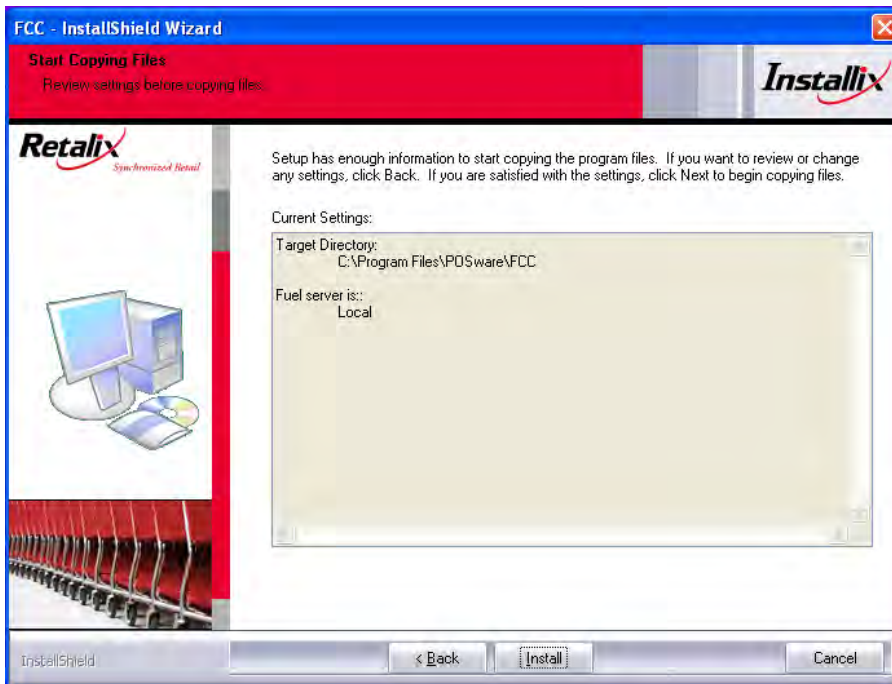
24 At the Choose Destination Location screen, click **Next**.



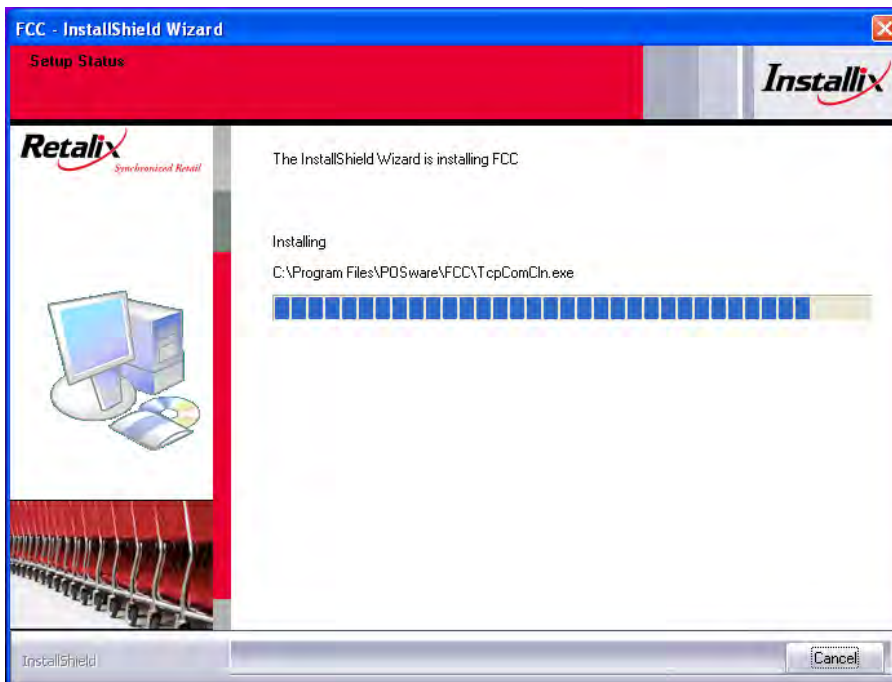
25 At the Connection Type screen, click **Next**.



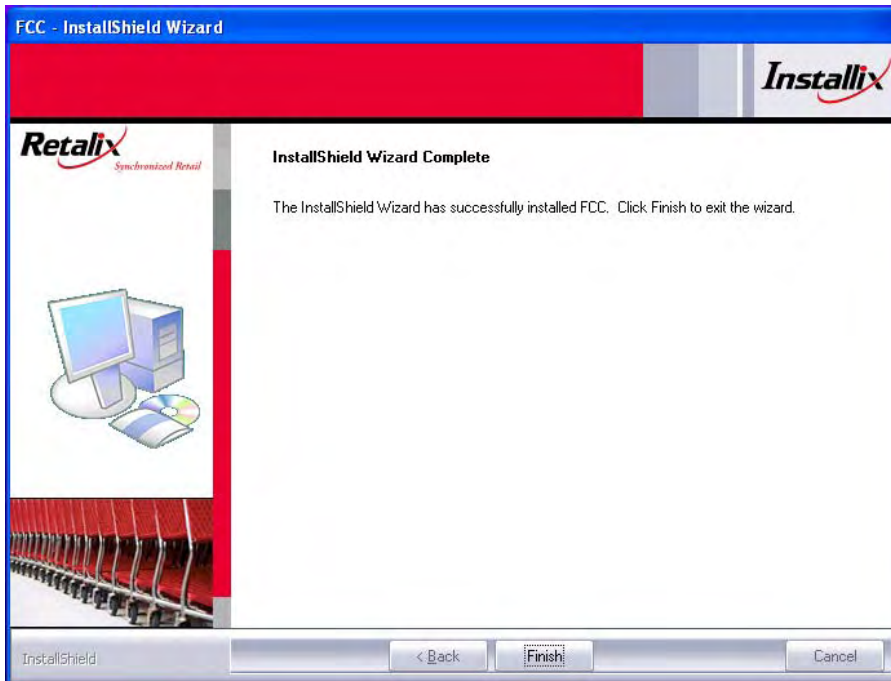
26 At the Start Copying Files screen, click **Install**.



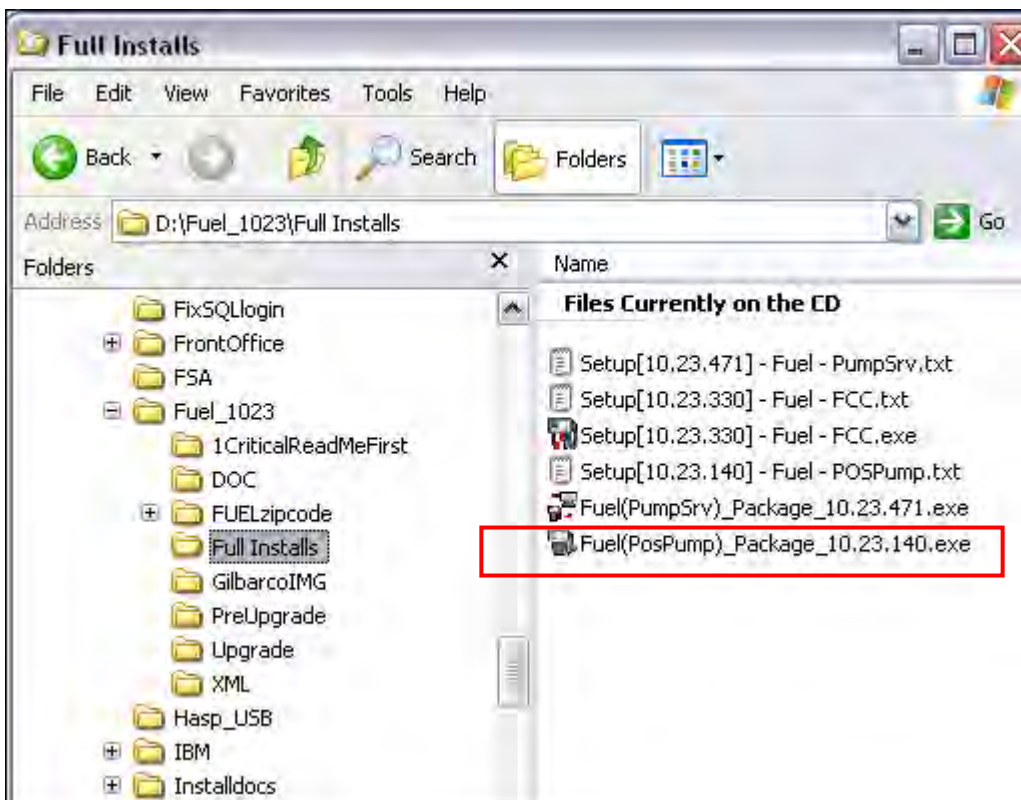
27 The Setup Status screen displays the installation progress.



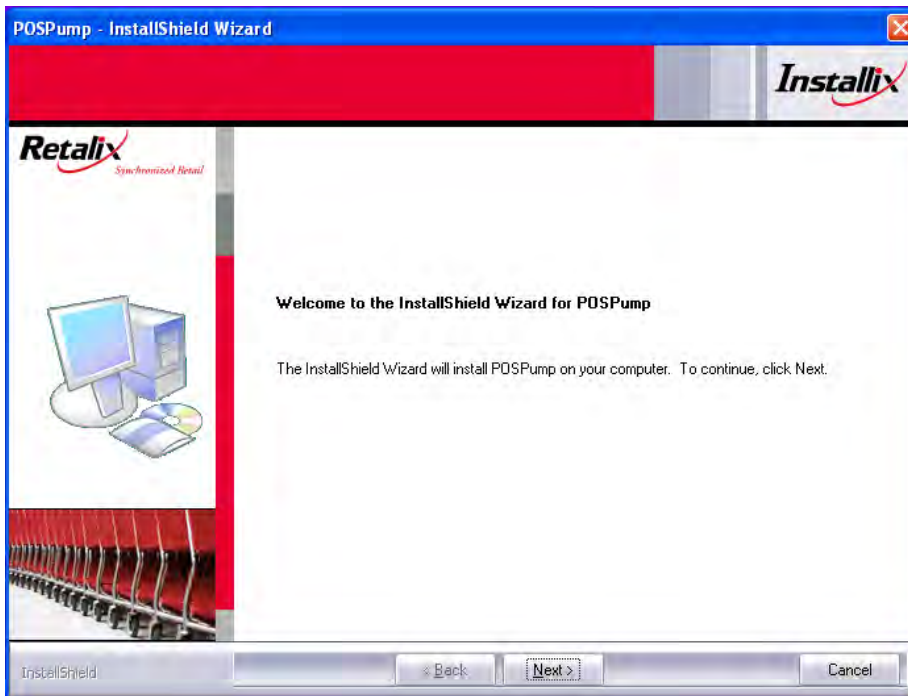
28 At the InstallShield Wizard Complete screen, click **Finish**.



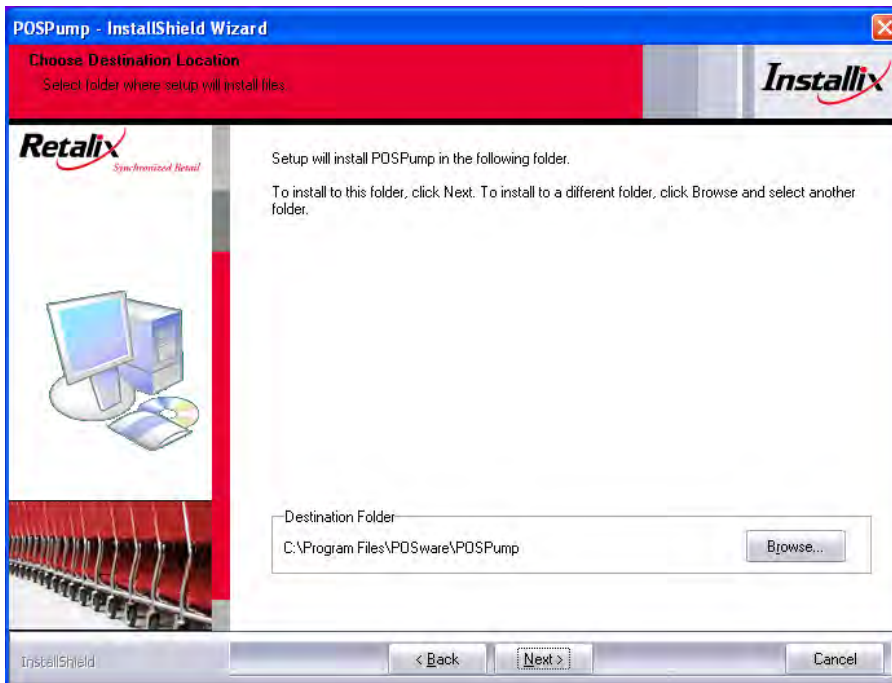
- 29 Explore to **\ Fuel_1023 \ Full Installs** on the CD drive and double-click on **Fuel(POSPump)_Package_xx.xx.xxx.exe** (where xx.xx.xxx is the latest install version).



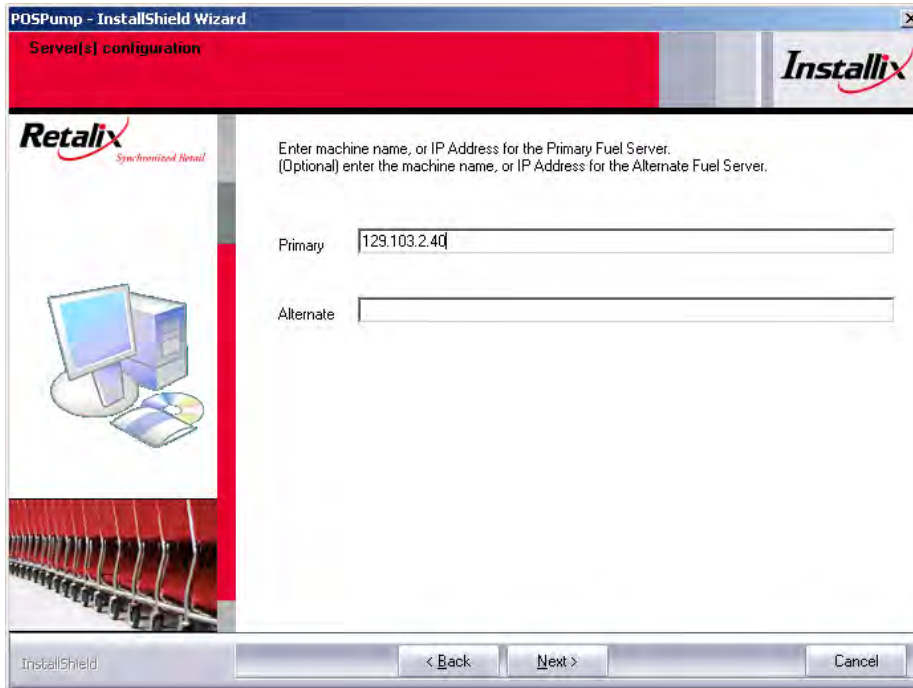
- 30 At the Welcome screen, click **Next**.



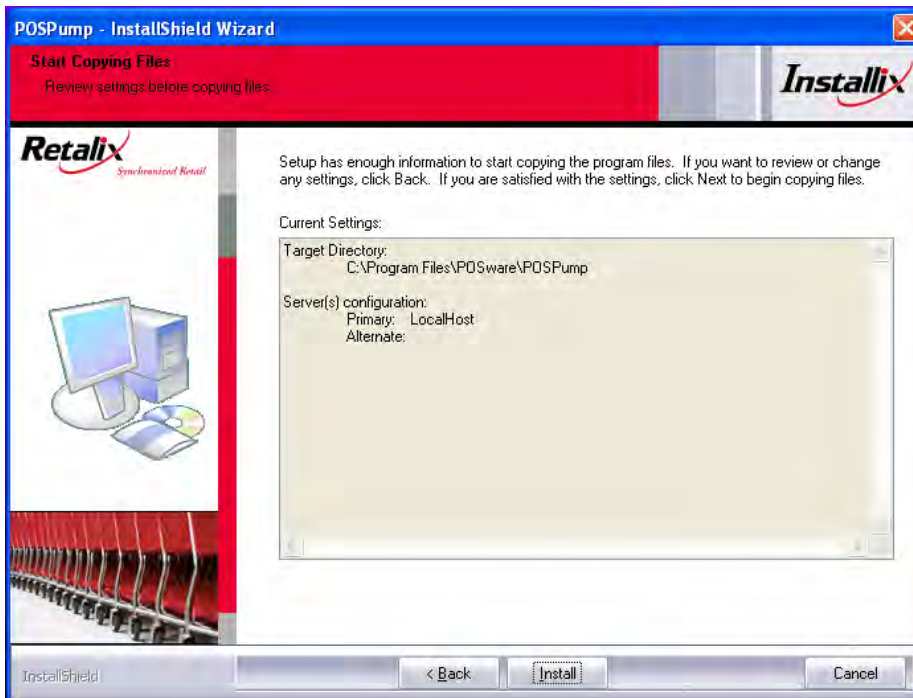
31 At the Choose Destination Location screen, click **Next**.



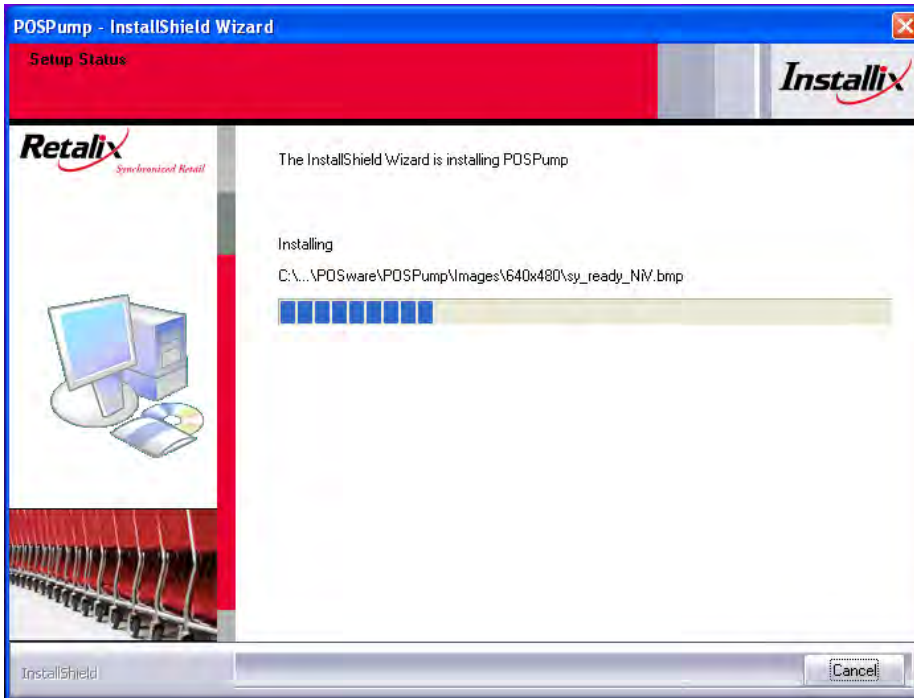
32 At the Servers Configuration screen, key in the Primary Fuel Server **Machine Name** or **TCP/IP address**. (Optional – Key in Alternate Fuel Server the **Machine Name** or **TCP/IP address**). Click **Next** to continue.



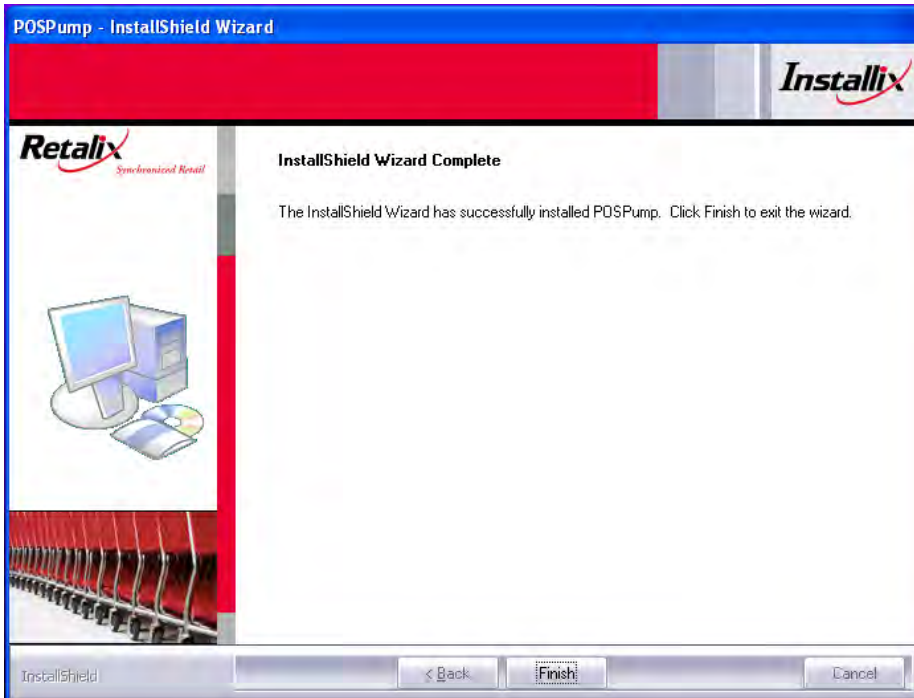
33 At the Start Copying Files screen, click **Install**.



34 The Setup Status Screen displays the installation progress.



35 At the InstallShield Wizard Complete screen, click **Finish**.



Configure Fuel Control Center (FCC)

- 1 Copy FCC shortcut Icon to Desktop.
- 2 Open FCC.
 - Log On
 - Password is time backwards plus one to the hour, only 3 digits are entered if the time is 8:59 am or earlier. (For example, if the time is 07:36, the password would be 638. If the time is 15:36:52, the password would be 6361)
- 3 Review Site Survey for FCC configuration.

Configure ISS45 Back Office for Fuel

- 1 Create a Fuel Department Group – (e.g., Fuel Department Group 700).
 - From the ISS45 Main Menu, go to Database Management -> Department Setup -> Department Groups and create one Fuel Department Group.
- 2 Create Individual Fuel Departments – (e.g., 701 to 705 or department numbers of your choice)
 - From the ISS45 Main Menu, go to Database Management -> Department Setup -> Departments. Create the following departments and check **Active**, and **Fuel Department** (Flags Tab) and link to Fuel Department Group (Basic Setup Tab).
 - Recommendation for Departments:
 - 701 – Fuel: To track and record sales for all fuel transactions including Pre-Pay, Pay Inside and Pay at Pump.
 - 702 – Drive Off: To track and record Pay Inside fuel transactions where customer leaves without paying for fuel dispensed.
 - 703 – Pump Test: To track and record fuel dispensed by technicians performing pump tests, for Weights and Measures compliance.
 - 704 – PrePay Fuel: To be used by the *Pump Server*, in the back ground, for processing Pre-Pay fuel transactions.
 - 705 – Uncollected Change: To track and record uncollected change, left by customers on Pre-Pay fuel transactions.
- 3 Create Fuel PLUs – (e.g., 500 to 504).
 - From the ISS45 Main Menu, go to PLU Management -> PLU Maintenance and create the following PLUs for each grade of fuel. Check the **Fuel Item** flag (Basic Setup Tab) and link to the Fuel department (e.g. Department 701 – Fuel):
 - 500 – Unleaded
 - 501 – Plus
 - 502 – Premium
 - 503 – Diesel
- 4 Create Fuel Tenders – Pay at Pump Credit and Pay at Pump Debit (e.g., 71 and 72)

- From the ISS45 Main Menu, go to Database Management -> Financial -> Tender Maintenance and create the following two tenders for Pay at Pump:
 - PAP Credit (e.g. Tender Number 71), Tender type= **Credit card/EFT**, check **Pay At Pump** Flag (General Parameters Tab).
 - PAP Debit (e.g. Tender Number 72), Tender type= **Debit card**, check **Pay At Pump** Flag (General Parameters Tab).

5 Set Fuel Parameters

- From the ISS45 Main Menu, go to System Administration -> General System Parameters, open the Store \ Fuel folder and set the following minimum parameters for fuel support:
 - Grade and PLU pricing link rules = Grade updates PLU.
 - Fuel in the system = Yes (Set earlier in the process).
 - Maximum dollar for prepay = \$ 100.00 (varies by Retailer – new maximum limit is \$999.99).
 - PFS number = POS number of the PFS computer.
 - Pre pay department code = Prepay Fuel (set in Step 3 above).
 - External Device No. = 80 (For example)
 - Differentiates Fuel Debit and Credit transactions from Debit and Credit transactions that are processed at the Front-End POS terminal.
 - The above value has to map to the offset in the lane setup in MicroTrax. (If the External Device No. = 80, then the lane numbers in MicroTrax must start at 81). Refer to WinEPS manual (Chapter 8).
 - Uncollected Change Department = Uncollected Change (set in Step 3 above).
 - Drive Off Prompts (Optional – Set in Store \ Fuel \ Drive off folder)

6 Enable Fuel Grades

- From the ISS45 Main Menu, go to Fuel -> Setup -> Grades:
 - Set fuel price per grade.
 - Link fuel grade to Fuel PLU item or department.

7 Select Additional Pump Control Parameters

- From the ISS45 Main Menu, go to Fuel -> Setup -> Pump Control Parameters and select from the following pump icons, the additional ones that you want to display on the Fuel POS Cashier Display:
 - Stop All
 - Move PrePay
 - Wetstock
 - Reprint Receipt

- Show All Transactions
 - Show Pump Transactions
 - Lock/Unlock Pumps
 - ARM Pump Button
 - Select Appropriate Modes
- 8 Define End of Day Report Parameters for generating Fuel Reports.
- From the ISS45 Main Menu, go to System Administration -> Front Office Parameters -> End of Day Report Parameters and select the Fuel reports to generate at EOD. Check "Add to Print History" to have the reports available for printing at a later date or time.
- 9 Edit HOSTS file (located in the WINNT \ system32 \ drivers \ etc folder) for PFS1, MFS1, MFS2 and Fuel POS lanes
- Add the following statement after POS1:
 - 129.103.15.40 POS30
 - 129.103.15.40 PFS1
 - Set FuellnSystem in WinPos.INI.
 - Edit WinPos.INI file (located in the \ Program Files \ WinPOS \ PosWare folder) on PFS1 and all POS Workstations running fuel. Set FuellnSystem=Yes.
- 10 Install Fuel Menusys.mac in POS30.
- Install new Menusys.Mac file in C:\Program Files \ PosWare \ WinPOS directory. The new file, Menusys.Fuel.Mac, can be found in the **Fuel_1023 \ Menusys** folder on the V8 Distribution CD.
 - Edit as necessary to support local DataBase.
- 11 Edit **MFS1, MFS2 & LFS** Registry to set PumpSrv_Ctrl Host1 & Master = Enter PFS1 Machine Name or TCP/IP address (e.g., POS30 or 129.103.2.40)
- HKEY_LOCAL_MACHINE \ Software \ Positive \ System \ Servers \ PumpSrv_CTRL
 - Modify:
 - Host1 = PFS1 Machine Name or TCP/IP address
 - MasterHost = PFS1 Machine Name or TCP/IP address
- 12 Edit **MFS1, MFS2 & LFS** Registry to set PumpSrv_Ctrl Host1 & Master = Enter PFS1 Machine Name or TCP/IP address (e.g., POS30 or 129.103.2.40)
- HKEY_LOCAL_MACHINE \ Software \ Positive \ System \ Servers \ PumpSrv_GPI
 - Modify:
 - Host1 = PFS1 Machine Name or TCP/IP address
 - MasterHost = PFS1 Machine Name or TCP/IP address

Install Secondary PFS2 (Optional)

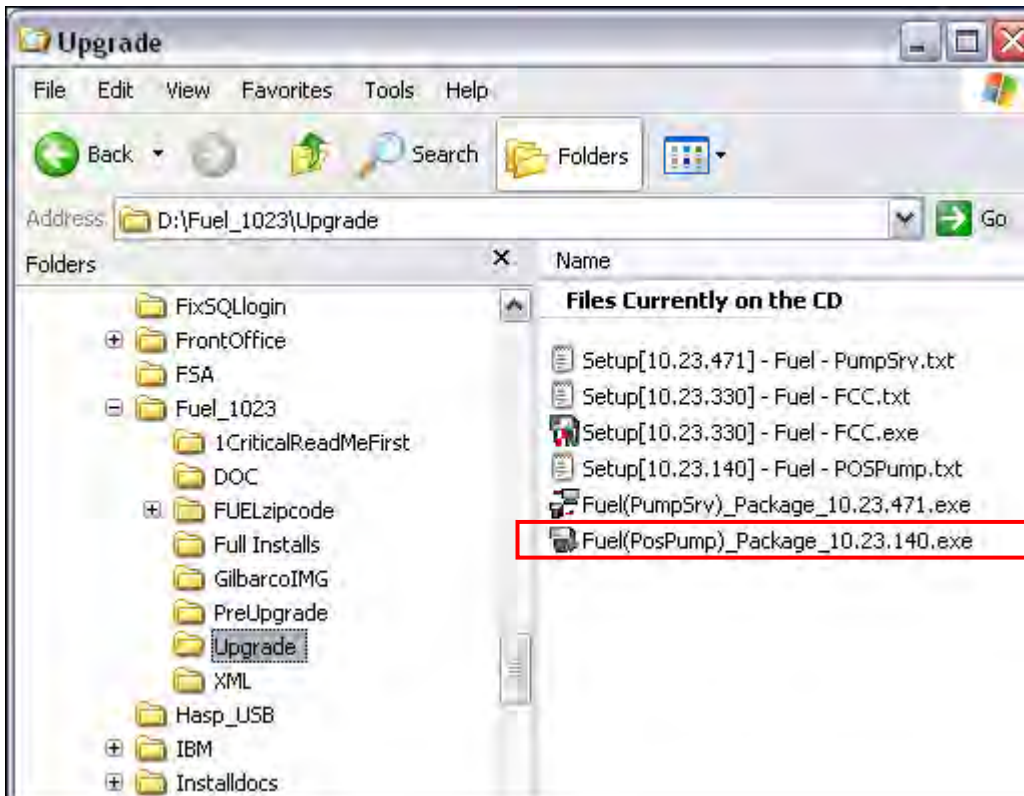
- 1 Install WinPOS on PFS2.
- 2 Install ISS45 patches for latest version.
- 3 Go to ISS45 Back Office.
 - In System Administration -> POS Setup -> POS Configuration, select the POS terminal with PFS software installed. Check **Active Till** and **Print text to Transaction File** (General Tab).
- 4 Export HKEY_LOCAL_MACHINE\SOFTWARE\Pointofsale and HKEY_LOCAL_MACHINE\SOFTWARE\Positive from PFS1 and import to PFS2.
- 5 Modify registry setting HKEY_LOCAL_MACHINE \ SOFTWARE \ Positive \ System \ Server \ PumpSrv_GPI
 - Host2 = Enter PFS2 Machine Name or TCP/IP or address (e.g., POS31 or 129.103.2.41)
 - MasterHost = PFS2 Machine Name or TCP/IP address
- 6 Modify HKEY_LOCAL_MACHINE \ Software \ Positive \ System \ Servers \ PumpSrv_CTR registry setting on MFS1, MFS2 and LFS Registry to set PumpSrv_Ctrl Host2 and Master = PFS2 Machine Name or TCP/IP address (e.g., POS31).
 - Host2 = PFS2 Machine Name or TCP/IP address
- 7 Edit HOSTS file for PFS2 – MFS1, MFS2, LFS & Fuel POS lanes.
 - Add the following statement after POS1:
 - 129.103.15.41 POS31
 - 129.103.15.41 PFS2
 - Set FuellnSystem in WinPos.INI.
 - Edit WinPOS.INI file (located in the \ Program Files \ WinPOS \ PosWare folder) on PFS2.
 - Set FuellnSystem=Yes

Note:

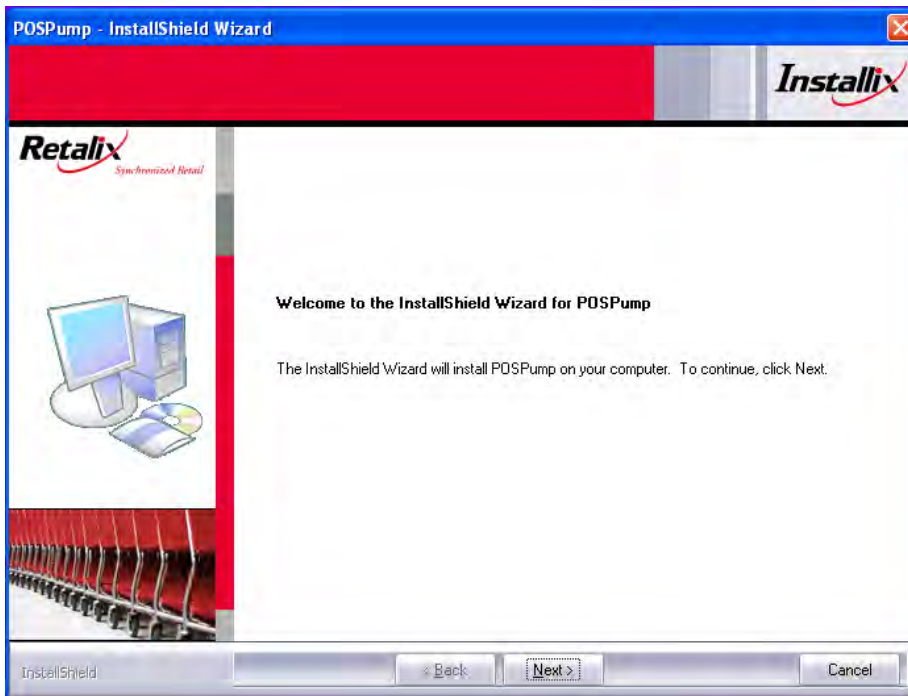
In this above example, POS terminal 31 is the optional, secondary PSF2.

(For New Installs) – Install POSPump on all POS Workstations Configured to Run Fuel

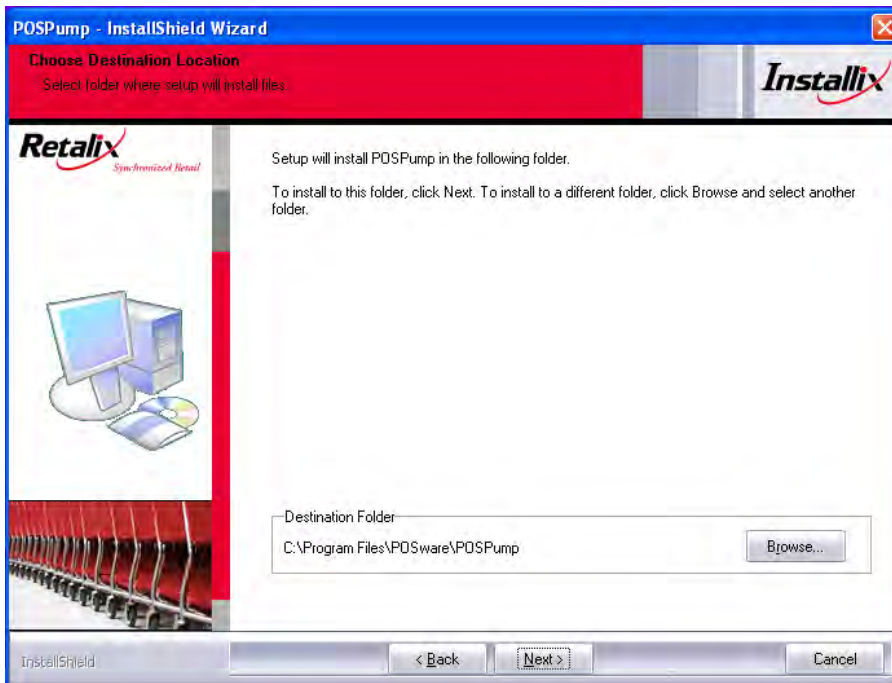
- 1 Double click on **Fuel(PosPump)_Package_xx.xx.xxx.exe** (where xx.xxx.xx is the current version) located on the ISS45 Distribution CD in the **Fuel_1023 \ Upgrade** folder.



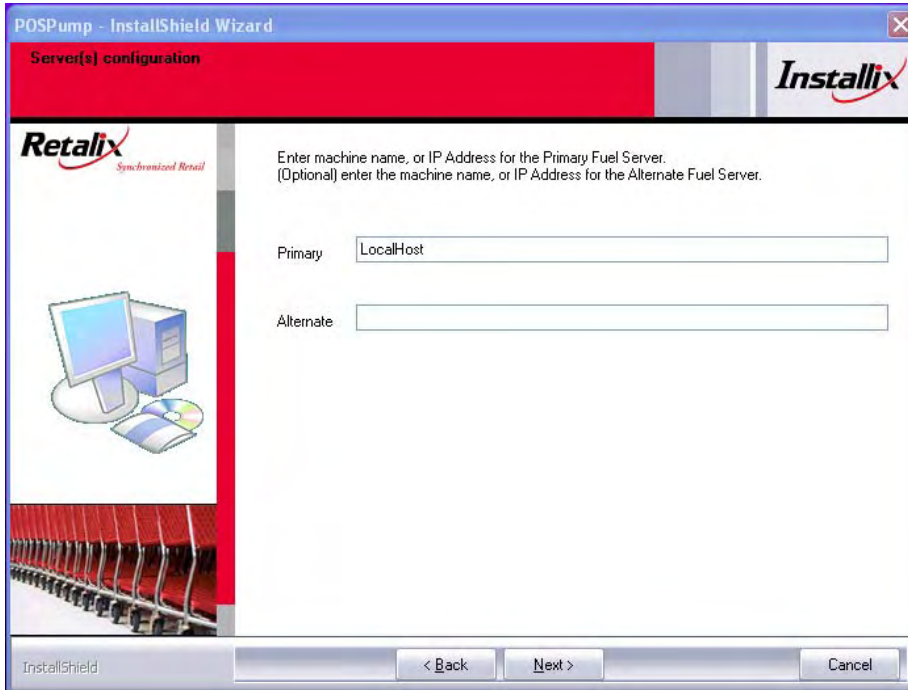
- 2 At the Welcome screen, click **Next**.



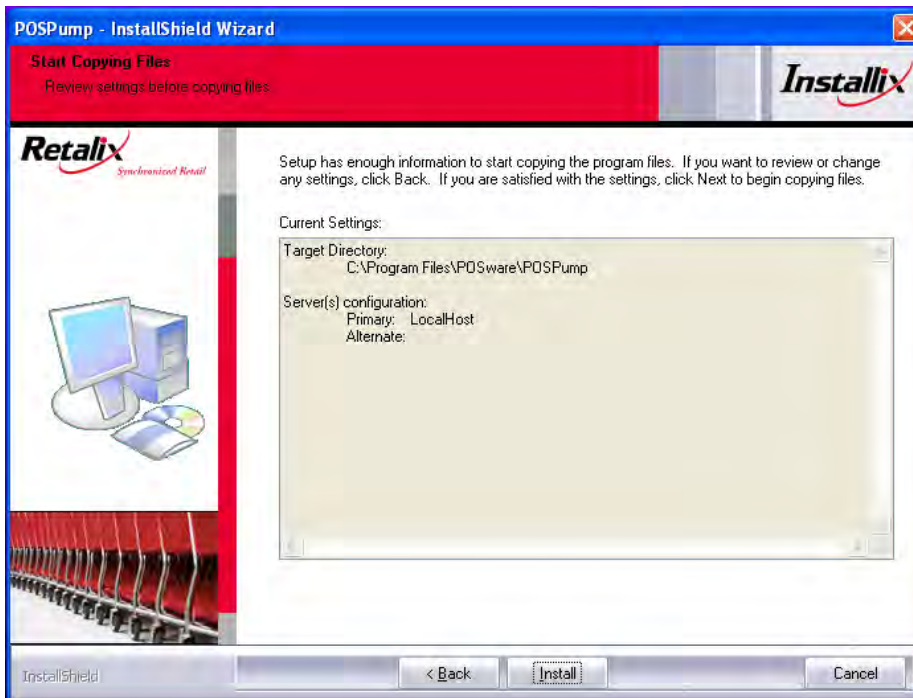
- 3 At the Choose Destination Location screen, click **Next**.



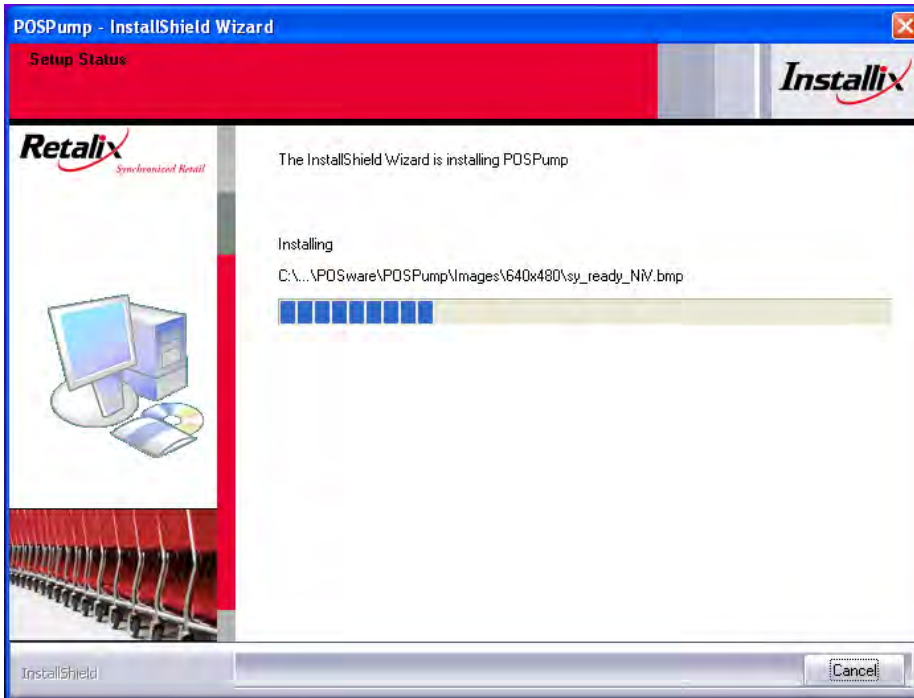
- 4 At the Servers Configuration screen, key in the Primary Fuel Server **Machine Name** or **TCP/IP address**. (Optional – Key in Alternate Fuel Server the **Machine Name** or **TCP/IP address**). Click **Next** to continue.



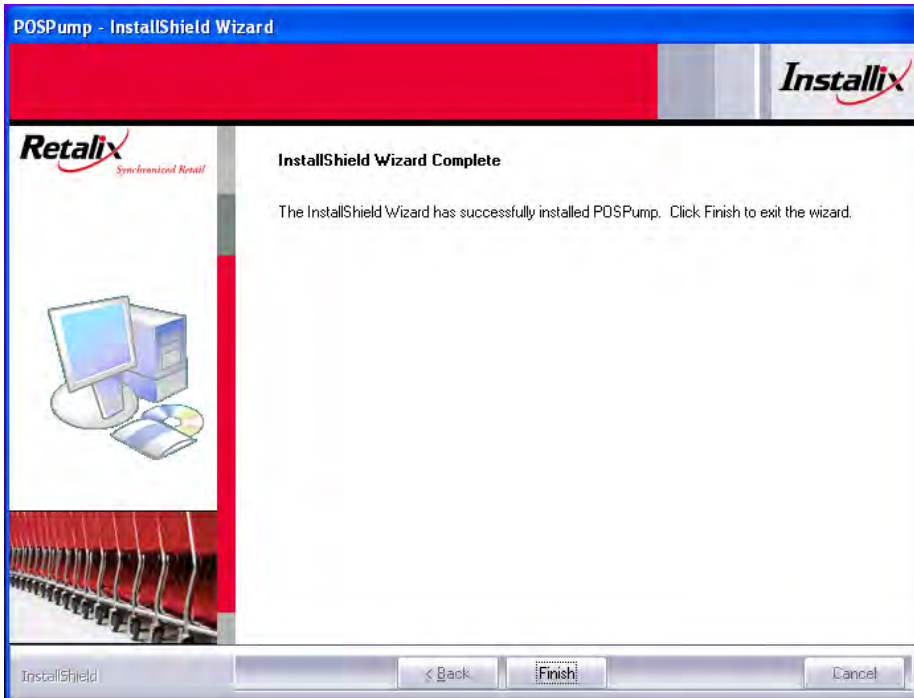
- 5 At the Start Copying Files screen, click **Install**.



- 6 The Setup Status Screen displays the installation progress.

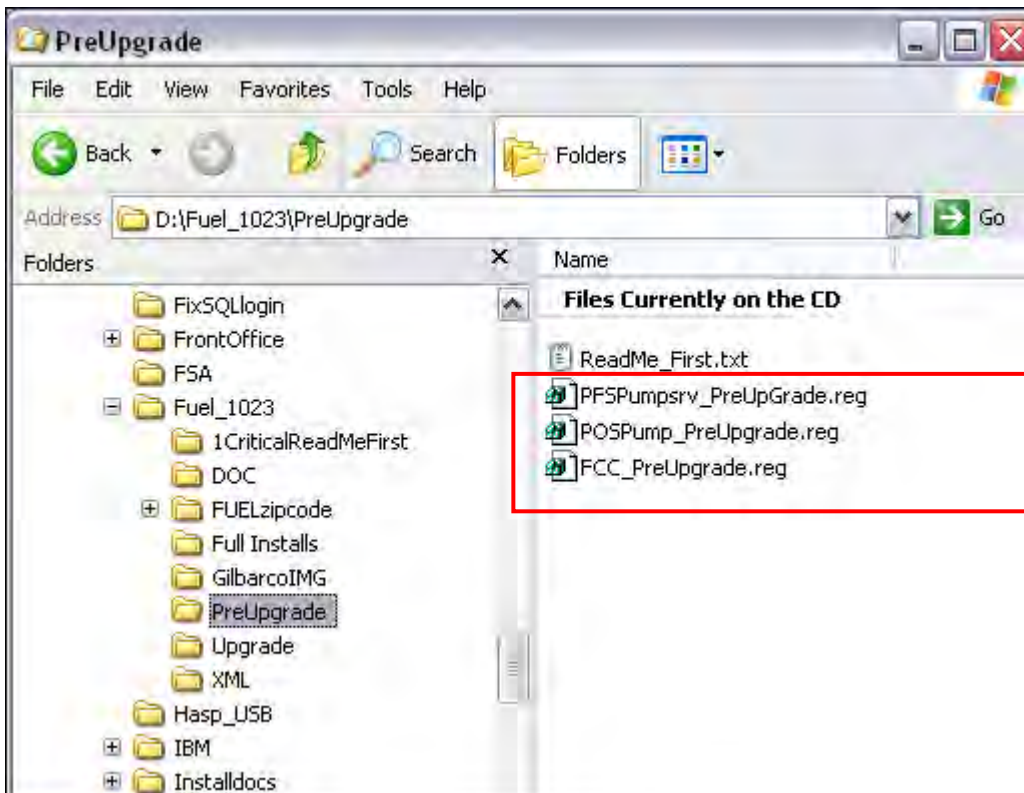


7 At the InstallShield Wizard Complete screen, click **Finish**.

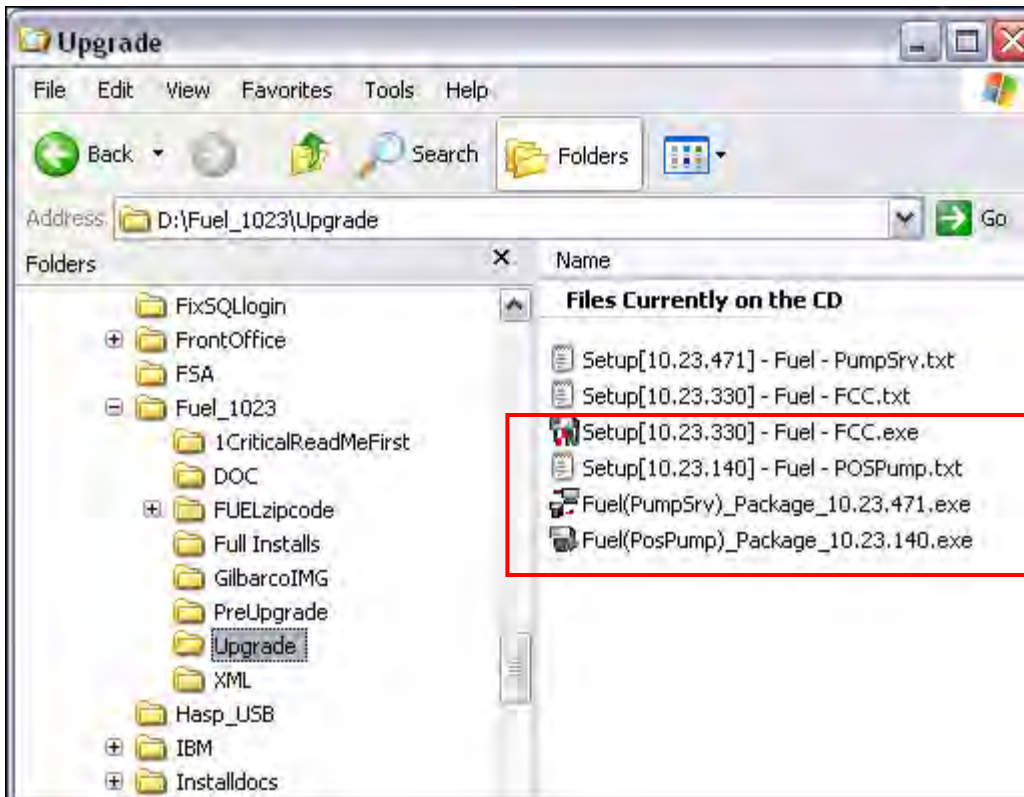


(PFS Upgrades) – Install FCC_Preupgrade.reg, POSpump_PreUpgrade.reg and PFSPumpSrv_PreUpGrade.reg

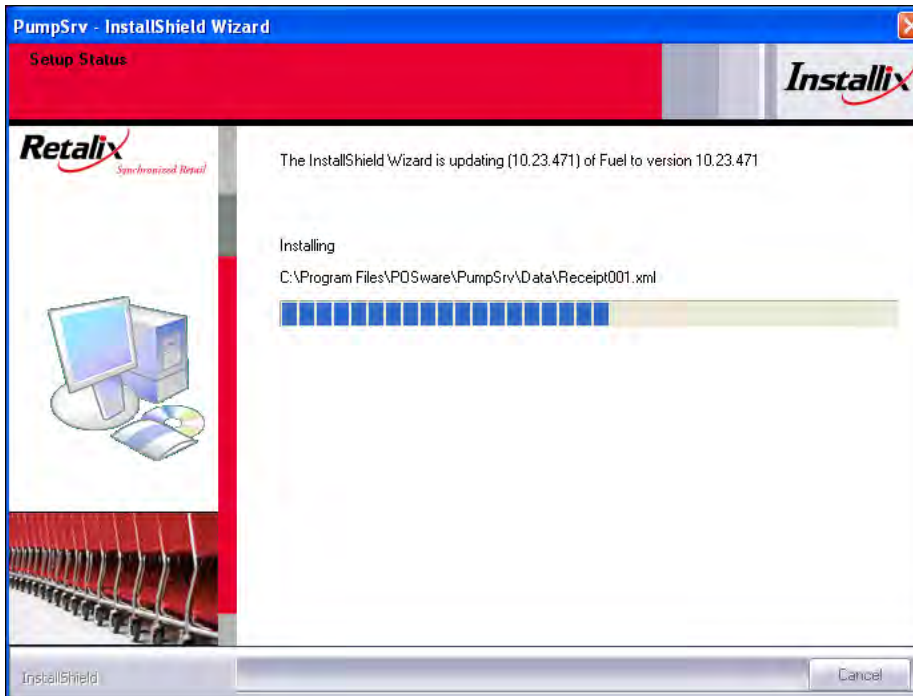
- 1 Install PFSPumpSrv_PreUpGrade.reg, POSpump_PreUpgrade.reg and FCC_Preupgrade.reg located on the ISS45 Distribution CD in the Fuel_1023 \ PreUpgrade folder. This can be done by double-clicking on each file and answering Yes to Are you sure you want to add information to the registry?



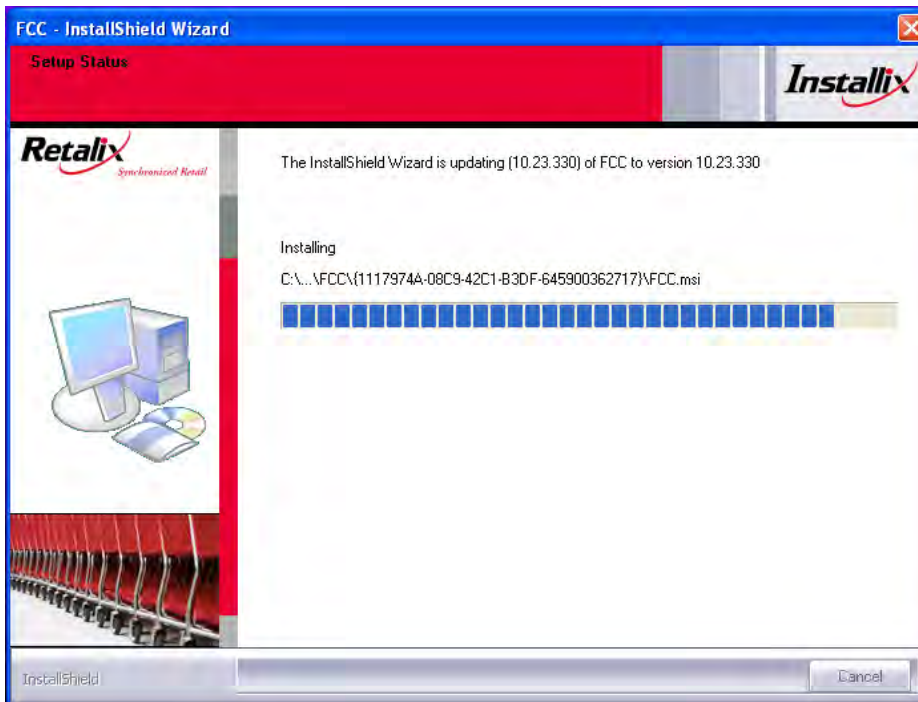
- 2 In the Fuel_1023 \ Upgrade folder, double-click on Fuel(PumpSrv)_Package_xx.xx.xxx.exe (where xx.xxx.xx is the current version) to install the upgrade.



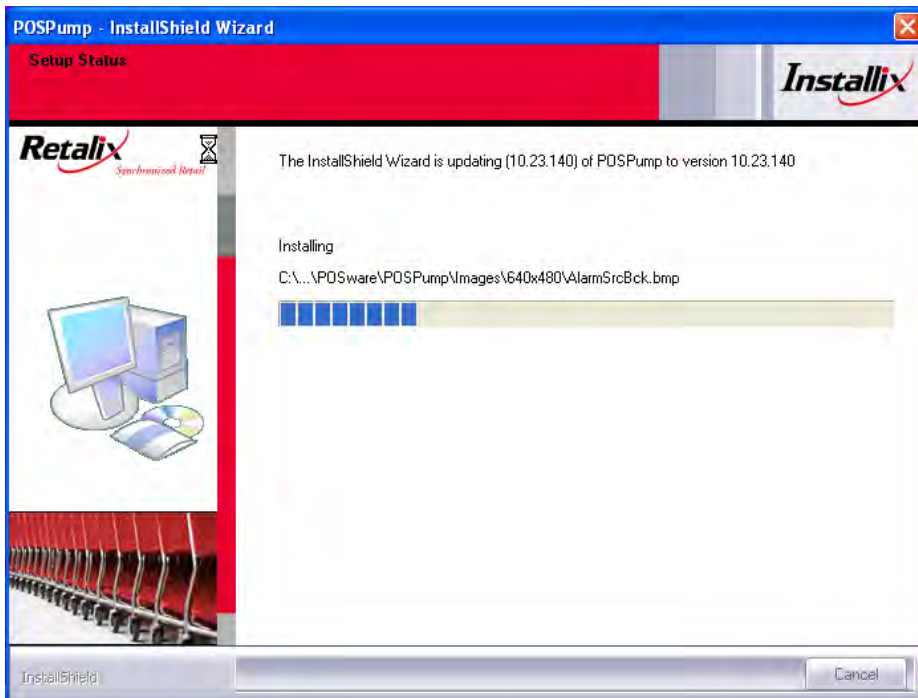
3 The upgrade installs.



4 Double click on **Fuel(FCC)_Package_xx.xx.xxx.exe** (where xx.xxx.xx is the current version) to install the upgrade. The upgrade installs.

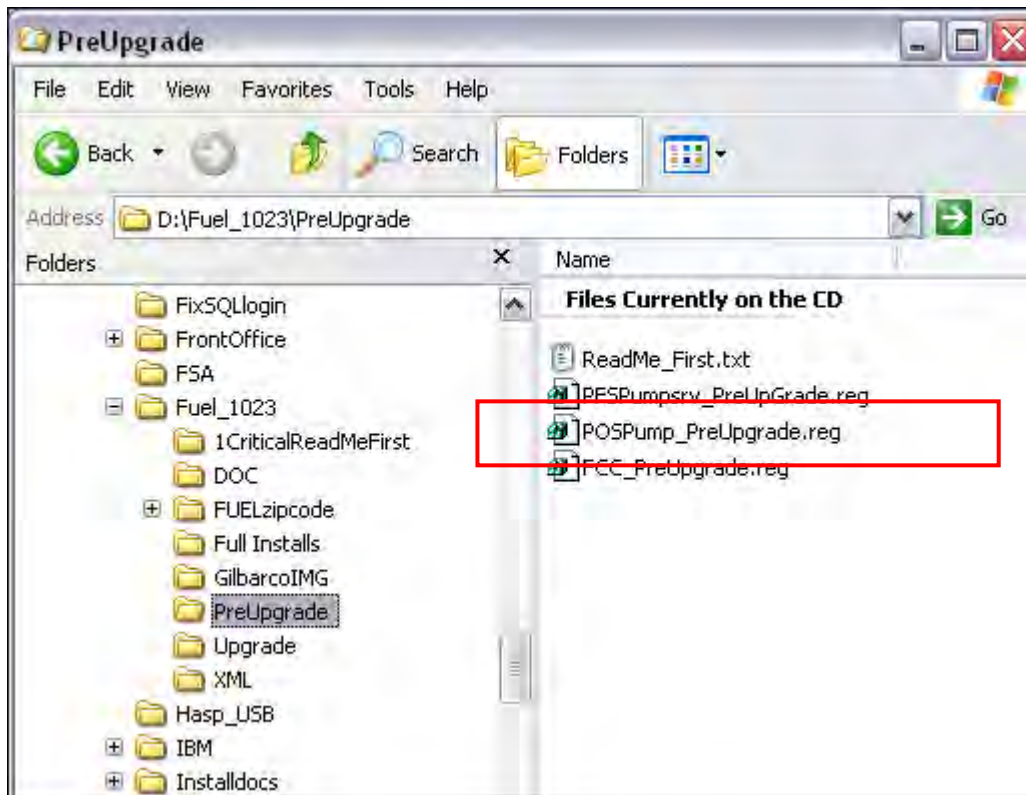


- 5 Double-click on Install **Fuel(PosPump)_Package_xx.xx.xxx.exe** (where xx.xxx.xx is the current version) to install the upgrade. The upgrade installs.

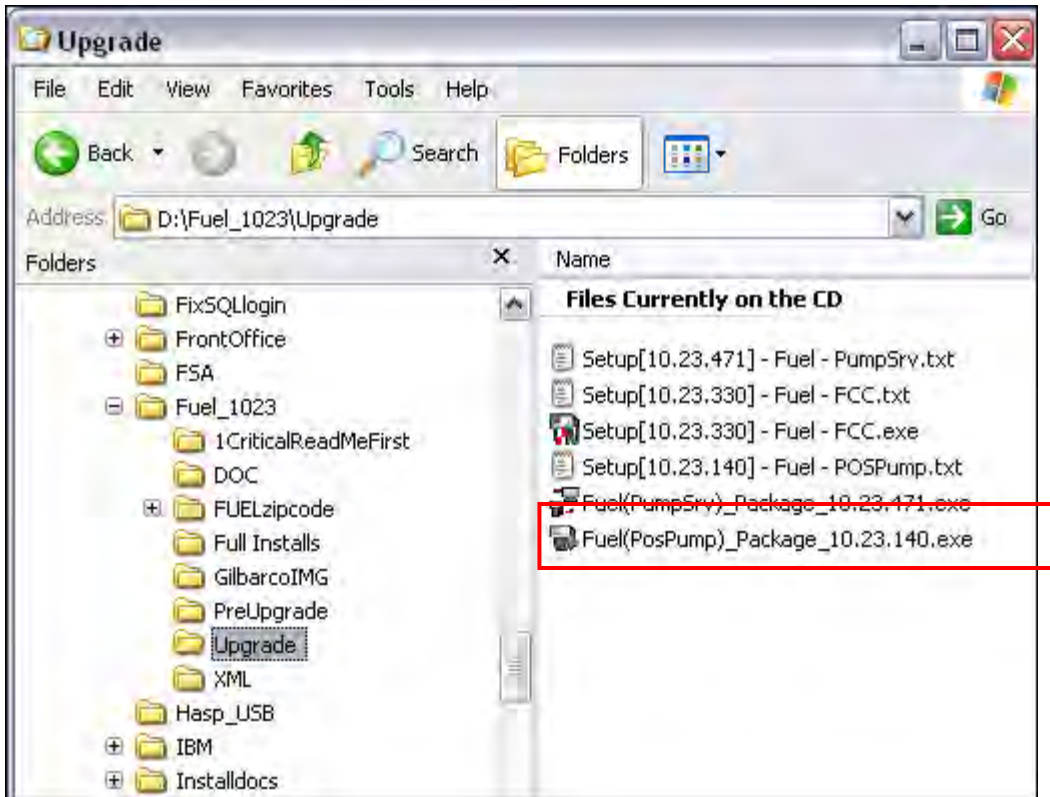


(POS Upgrades) – Install POSpump (on all Fuel POS Lanes)

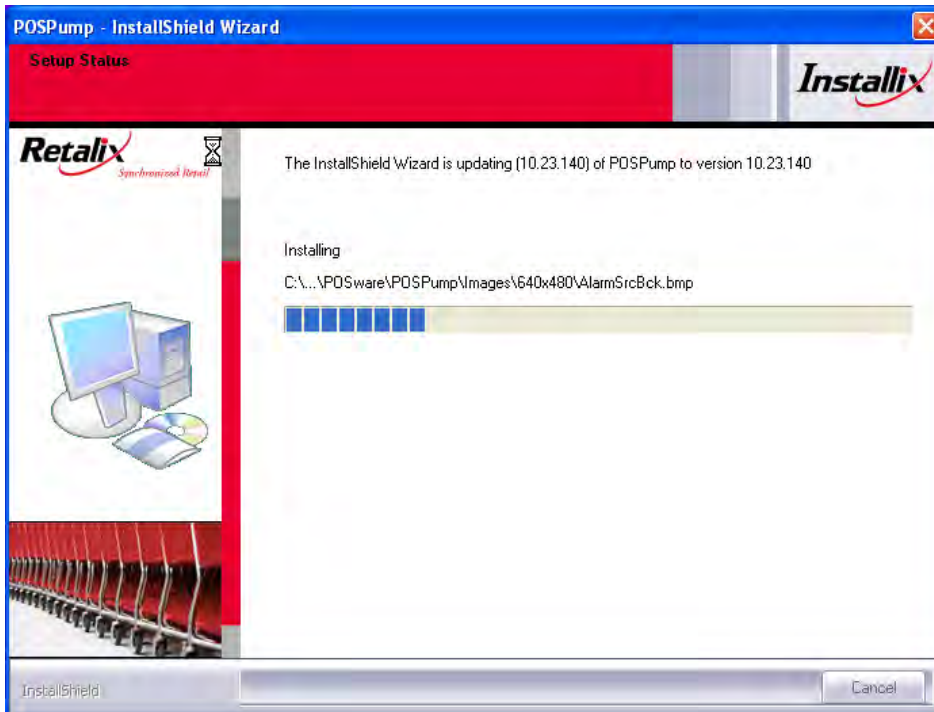
- 1 Install **POSpump_PreUpgrade.reg** located on the ISS45 Distribution CD in the **Fuel_1023 \ PreUpgrade** folder. This can be done by double-clicking on the file and answering **Yes** to **Are you sure you want to add information to the registry?**

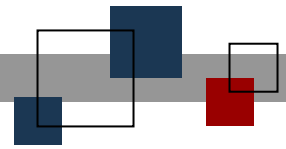


- 2 In the **Fuel_1023 \ Upgrade** folder, double-click on **Fuel(PosPump)_Package_xx.xx.xxx.exe** (where xx.xx.xx is the current version) to install the upgrade.



3 The upgrade installs.





© StoreNext Retail Technologies LLC 2011

StoreNext Retail Technologies LLC endeavors to ensure that the information in this document is correct and fairly stated but does not accept liability for any error or omission.

The development of StoreNext products and services is continuous and published information may not be up to date. It is important to check the current position with StoreNext. This document is not part of a contract or license save insofar as may be expressly agreed.