



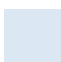




-  *ISS45 Version 8 Office*
-  *Installation Guide with Windows 7*
-  *8.1.5.2-050*
-  *Overview*
- 

ISS45 V8 Front Office Installation Guide with Windows 7, Overview

Date of Issue	Product Identification Number	Part Number	Brief Description
February 2011	45001/032	89000622	Version 8.1.5.2
May 2011	45001/032	89000651	8152 Updated

**©Copyright StoreNext Retail Technologies LLC 1995-2011
All rights reserved**

This publication is protected by federal copyright law. This document and its contents are the proprietary, confidential information and property of StoreNext.. Unauthorized disclosure, reproduction, distribution or use of this document and/or its contents in any form is strictly prohibited. No part of this publication may be reproduced or transmitted into any human or computer language in any form or by any means, stored in a retrieval system, transmitted, redistributed, translated or disclosed to third parties, or de-compiled in any way including, but not limited to, photocopy, photograph, electronic, mechanical, magnetic or manual without the express written permission of StoreNext Retail Technologies LLC or its licensors, if any. This document, notwithstanding the above, may be distributed in electronic or printed form to personnel who are employed by either (1) a StoreNext customer of the subject system of this document or (2) personnel from an authorized StoreNext dealer of the subject system of this document. All copies, so distributed and/or so authorized, shall contain a full copy of this copyright notice.

StoreNext Retail Technologies LLC has prepared this manual for use by users, authorized third parties and personnel of StoreNext Retail Technologies LLC as a guide to the proper installation, operation, customization and/or maintenance of StoreNext Retail Technologies LLC equipment and software. The drawings and specifications contained herein are the property of StoreNext Retail Technologies LLC and/or its licensors.

StoreNext Retail Technologies LLC endeavors to ensure that the information in this document is correct and fairly stated but does not accept liability for any error or omission. StoreNext Retail Technologies LLC makes no representation or warranties with respect to the contents hereof, and specifically disclaims any implied warranties of merchantability or fitness for a particular purpose or non-infringement. No commitments by StoreNext or its suppliers are made from this documentation which is provided for information only.

Development of StoreNext products and documentation is continuous: StoreNext Retail Technologies LLC reserves the right to revise this publication and to make changes from time to time in the contents hereof or in the products herein described or discussed without notice and without any obligation of StoreNext Retail Technologies LLC to notify any person or organization of such revision or changes. Information published in this document will likely become obsolete over time and it is recommended that users regularly check for updates and newer versions.

The trademarks StoreNext and Retailix are registered trademarks or trademarks of Retailix; all other trademarks or registered trademarks are the property of their respective owners. Third-party products, services, or company names referenced in this document may be trademarked or copyrighted by their respective owners, and are for identification purposes only.

Copyrights, trademarks and license agreements shall be governed and construed in accordance with the laws of the State of Texas and the Federal Arbitration Act, and shall benefit Retailix, its successors, and assigns.

Address comments and corrections to:

StoreNext Retail Technologies LLC
Software Program Director
797 Commonwealth Drive
Warrendale, PA 15086

System Changes for Installing ISS45 with Windows 7 Professional

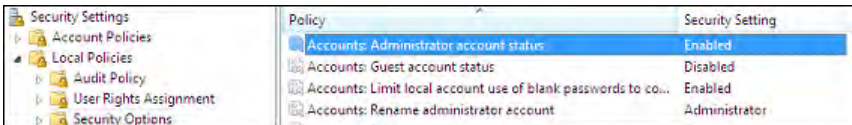
This document is intended as a broad overview for configuring Windows 7 Professional on MFS1 prior to installing ISS45 Version 8. For details on installing and configuring SQL Server 2008 (steps 12 through 15 below), follow the instructions in the **StoreNext SQL 2008 Installation Guide** or the **StoreNext SQL 2008 Workgroups Installation Guide**.

- 1 By Default the Administrator Account is disabled in Windows 7 Professional so you must enable access to this account.

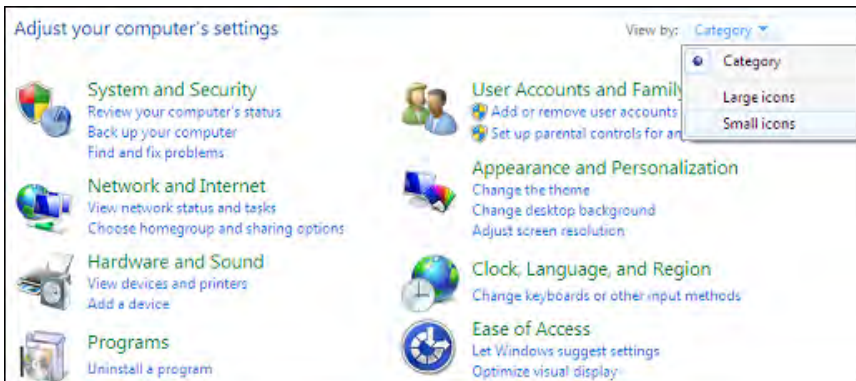
- Click on **START**, enter **SECPOL.MSC** in the Search Box and press **ENTER**.

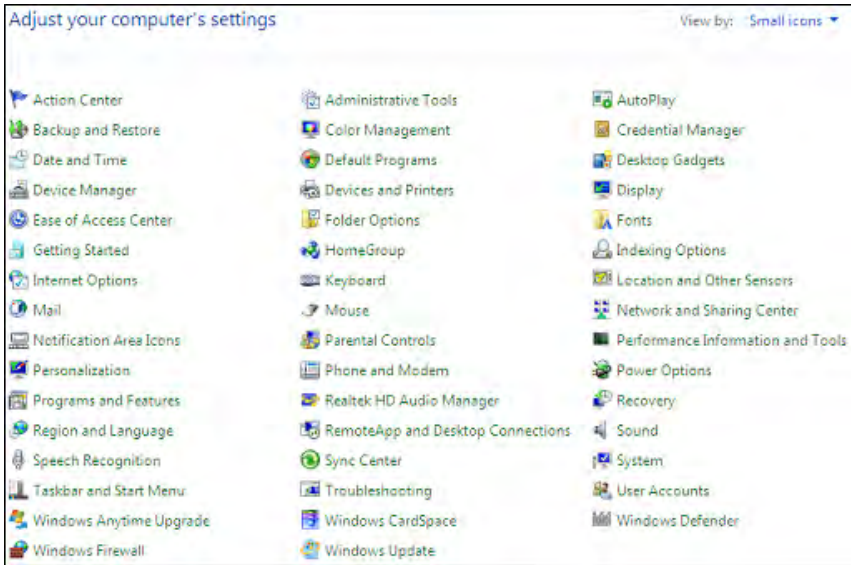


- The Local Security Policy Screen will open:

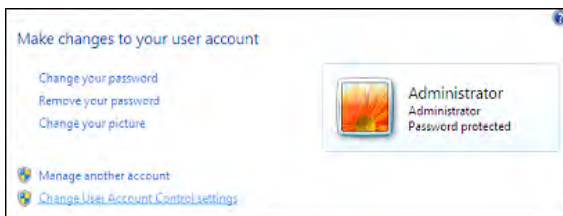


- Click on **Local Policy** -> **Security Options** and select **Enabled** for **Accounts: Administrator Account Status**.
- 2 Sign off the current Windows User and then sign in as Administrator with no password. Press **<Ctrl><Alt><Delete>** and select **Change Password**. Leave the current password field blank and enter the new password twice. Log off and back in as Administrator with the new password.
 - 3 Open the Control Panel and change the **View by:** setting to **Small Icons** (upper right-hand corner).



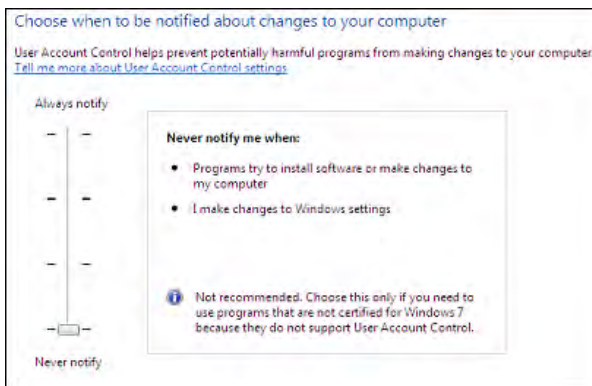


4 Click on **User Accounts**.



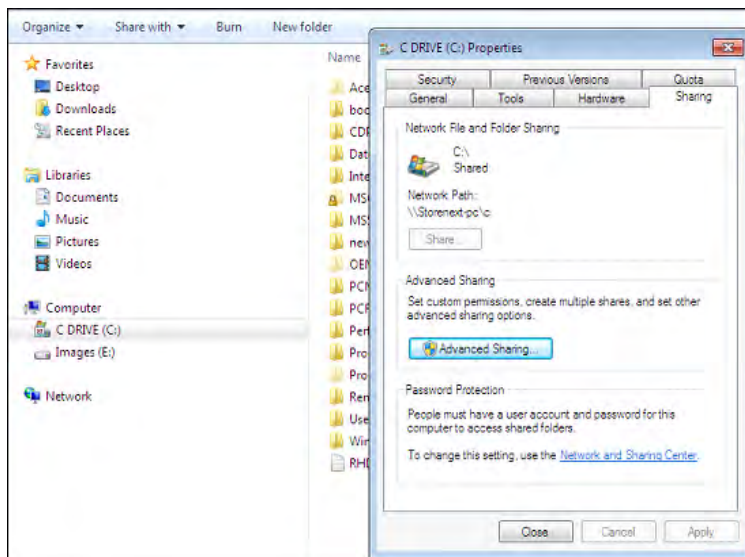
5 Click **Change User Account Control settings**.

6 Disable User Account Control by moving the slide bar all the way to the bottom (**Never notify**) and click **OK**.

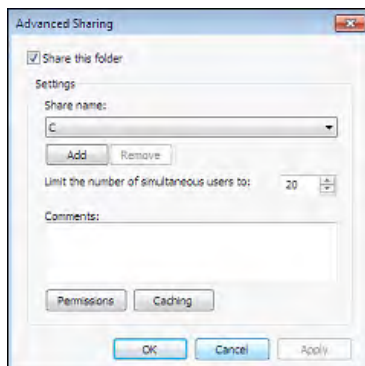


7 By default the C: drive will not be shared and the administrator will not have any rights on the drive. Share the drive as C, add the administrator and set Full Permissions.

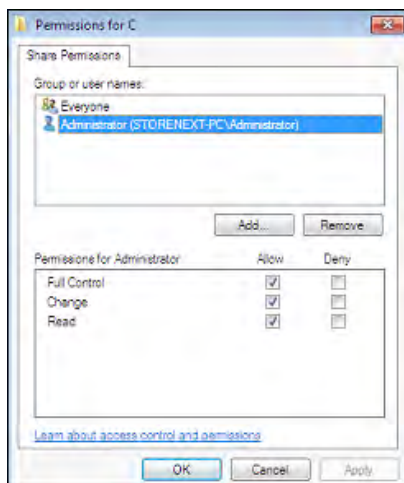
- Click the **Computer** icon from the Desktop.
- Right-click on the **C:** drive and select **Properties**.



- Click on **Advanced Sharing**.

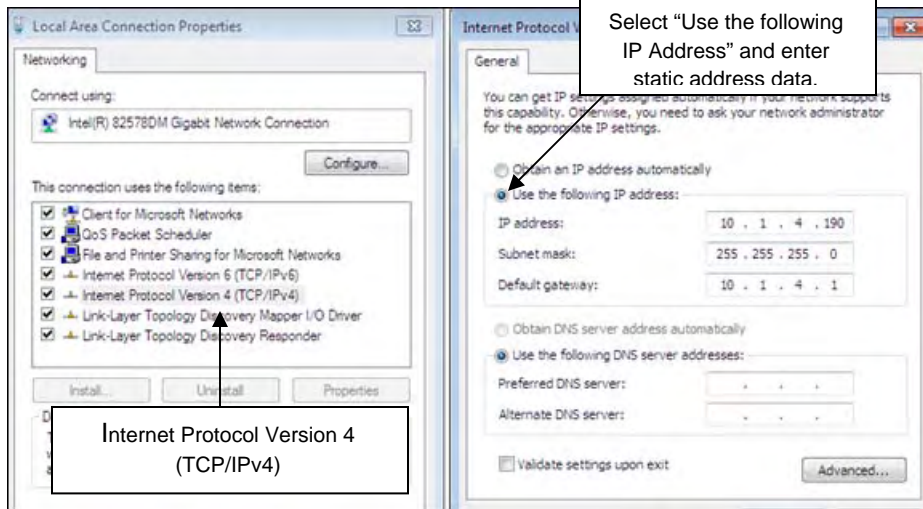


- Click the **Share this folder** checkbox and add a **Share name** of **C**.
- Click on **Permissions**.

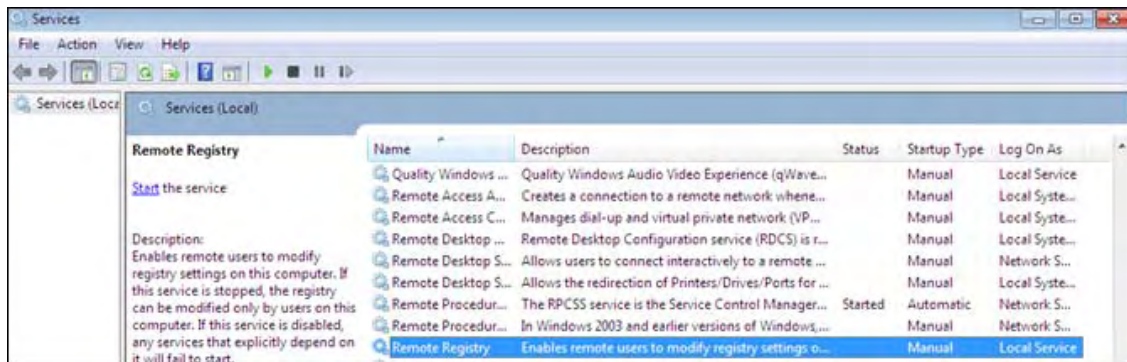


- Highlight the **Administrator** and check the **Allow** box for **Full Control**, **Change** and **Read**.

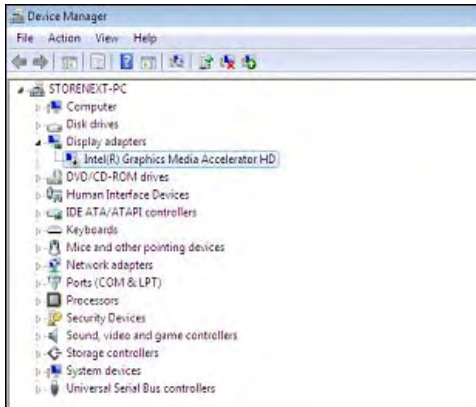
- 8 By default the Network Card will be configured to obtain an IP Address automatically. ISS45 requires all terminals to have a static IP Address. Configure the Internet Protocol Version 4 (TCP/IPv4) function of the network card so it will communicate on your network (under **Network and Internet ->Network Connections**).



- 9 By default the Remote Registry Service in Windows 7 is set for Manual Start and is not running. (In previous versions of Windows, this service had been set to automatic and always running.) ISS45 requires this service to be running to install MFS2 or any LFS terminal. It is recommended you set this service to Automatic Start (under **Services-> Services Local**).



- 10 By default the drivers for the On Board Video Card (in Acer PCs) does not support a Full Screen Command Prompt Box but ISS45 requires this functionality. Disable the installed video card driver (under **Control Panel ->Device Manager -> Display Adapters**, right-click and **Disable**) and reboot the PC.



11 Verify a Command prompt window can be opened and toggle back and forth between full screen and normal screen.

- Click on **Start**, enter **cmd** in the Search Box and press **Enter**. The command window displays.
- Press **<Alt><Enter>** twice to toggle between both screens.
- Type **exit** and press **Enter** to return to the Desktop.

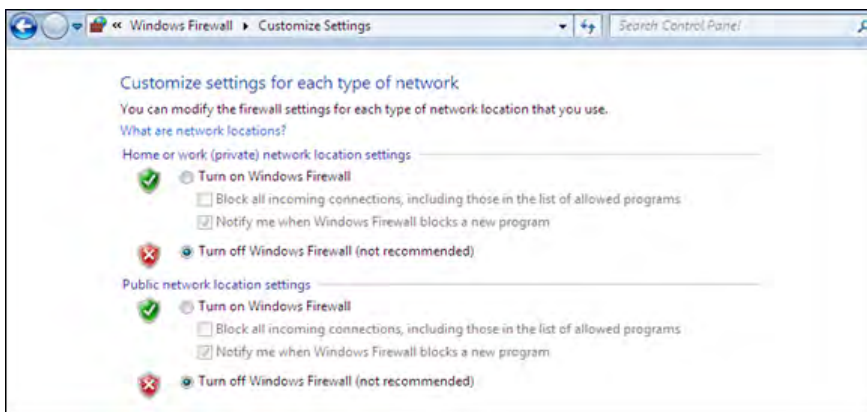
12 Install SQL 2008 for Workgroups (follow the instructions in the *StoreNext SQL 2008 Installation Guide* or the *StoreNext SQL 2008 Workgroups Installation Guide*). By Default the SA user must have a password set during the install of SQL. Make sure to remove this password before attempting to install ISS45.

13 Install the SQL 2005 Backward Compatibility Patch (as per the SQL Installation documentation).

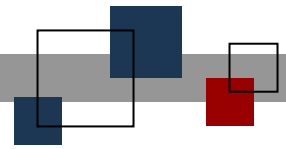
14 Install SQL Server 2008 Service Pack 1 (as per the SQL Installation documentation).

15 Remove the password on the SA user in SQL (as per the SQL Installation documentation).

16 Turn off the Windows Firewall (**Control Panel -> Windows Firewall ->Customize Settings**).



17 Install ISS45 Version 8.



© StoreNext Retail Technologies LLC 2011

StoreNext Retail Technologies LLC endeavors to ensure that the information in this document is correct and fairly stated but does not accept liability for any error or omission.

The development of StoreNext products and services is continuous and published information may not be up to date. It is important to check the current position with StoreNext. This document is not part of a contract or license save insofar as may be expressly agreed.