



■ *ISS45 Version 8 Office*

■ *Installation Guide – MFS2*



*8.1.5.2-050*

## ISS45 V8 Front Office Installation Guide — MFS2

<b>Date of Issue</b>	<b>Product Identification Number</b>	<b>Part Number</b>	<b>Brief Description</b>
June 2002	45001/032	89000100	Updated for 8.4 Release
September 2002	45001/032	89000110	Updated
February 2011	45001/032	89000614	8152-050 Release
May 2011	45001/032	89000644	8152-050 Release

**©Copyright StoreNext Retail Technologies LLC 1995-2011  
All rights reserved**

This publication is protected by federal copyright law. This document and its contents are the proprietary, confidential information and property of StoreNext. Unauthorized disclosure, reproduction, distribution or use of this document and/or its contents in any form is strictly prohibited. No part of this publication may be reproduced or transmitted into any human or computer language in any form or by any means, stored in a retrieval system, transmitted, redistributed, translated or disclosed to third parties, or de-compiled in any way including, but not limited to, photocopy, photograph, electronic, mechanical, magnetic or manual without the express written permission of StoreNext Retail Technologies LLC or its licensors, if any. This document, notwithstanding the above, may be distributed in electronic or printed form to personnel who are employed by either (1) a StoreNext customer of the subject system of this document or (2) personnel from an authorized StoreNext dealer of the subject system of this document. All copies, so distributed and/or so authorized, shall contain a full copy of this copyright notice.

StoreNext Retail Technologies LLC has prepared this manual for use by users, authorized third parties and personnel of StoreNext Retail Technologies LLC as a guide to the proper installation, operation, customization and/or maintenance of StoreNext Retail Technologies LLC equipment and software. The drawings and specifications contained herein are the property of StoreNext Retail Technologies LLC and/or its licensors.

StoreNext Retail Technologies LLC endeavors to ensure that the information in this document is correct and fairly stated but does not accept liability for any error or omission. StoreNext Retail Technologies LLC makes no representation or warranties with respect to the contents hereof, and specifically disclaims any implied warranties of merchantability or fitness for a particular purpose or non-infringement. No commitments by StoreNext or its suppliers are made from this documentation which is provided for information only.

Development of StoreNext products and documentation is continuous: StoreNext Retail Technologies LLC reserves the right to revise this publication and to make changes from time to time in the contents hereof or in the products herein described or discussed without notice and without any obligation of StoreNext Retail Technologies LLC to notify any person or organization of such revision or changes. Information published in this document will likely become obsolete over time and it is recommended that users regularly check for updates and newer versions.

The trademarks StoreNext and Retailix are registered trademarks or trademarks of Retailix; all other trademarks or registered trademarks are the property of their respective owners. Third-party products, services, or company names referenced in this document may be trademarked or copyrighted by their respective owners, and are for identification purposes only.

Copyrights, trademarks and license agreements shall be governed and construed in accordance with the laws of the State of Texas and the Federal Arbitration Act, and shall benefit Retailix, its successors, and assigns.

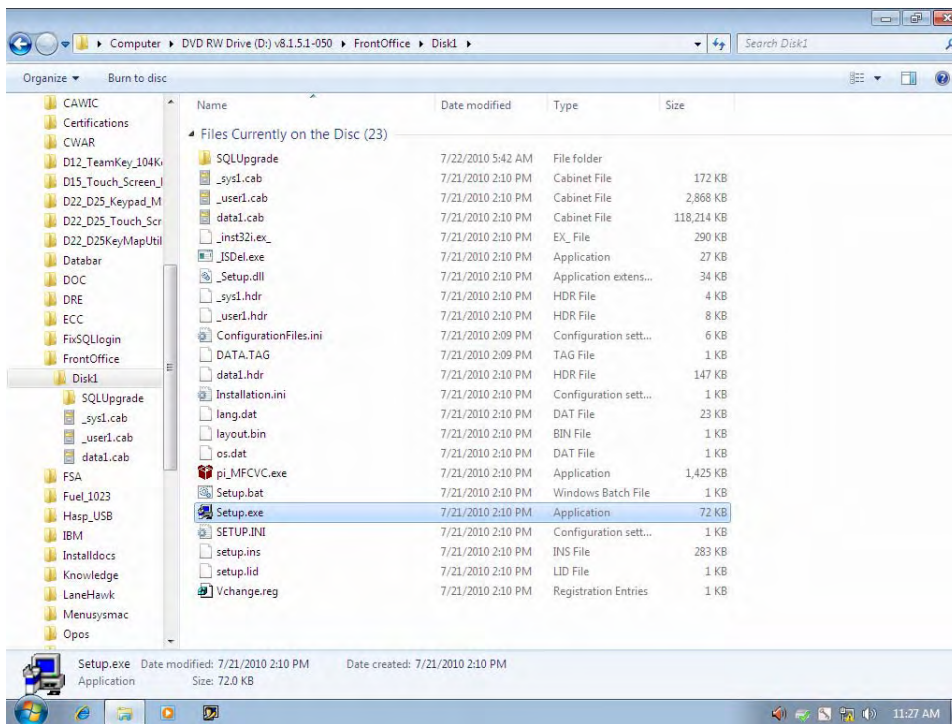
Address comments and corrections to:

**StoreNext Retail Technologies LLC  
Software Program Director  
797 Commonwealth Drive  
Warrendale, PA 15086**

# Installing ISS45 Version 8 Front Office on MFS2

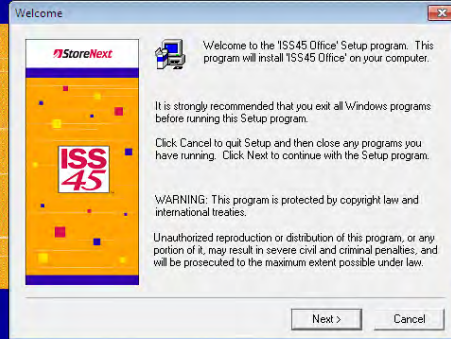
It is recommended that the Administrator User be logged into Windows when installing ISS45 v8.

## 1 Run **Setup.exe** from the Front Office\Disk 1 folder



## 2 Click **Next**.

**ISS45 Office Installation**  
Version: 8.1.5.2-046



© 2005 StoreNext Retail Technologies LLC.  
ISS45 is a trademark of Fujitsu.  
StoreNext is a joint venture of Fujitsu and Retailix.



- 3 Enter Customer Name and Company Information and click **Next**.

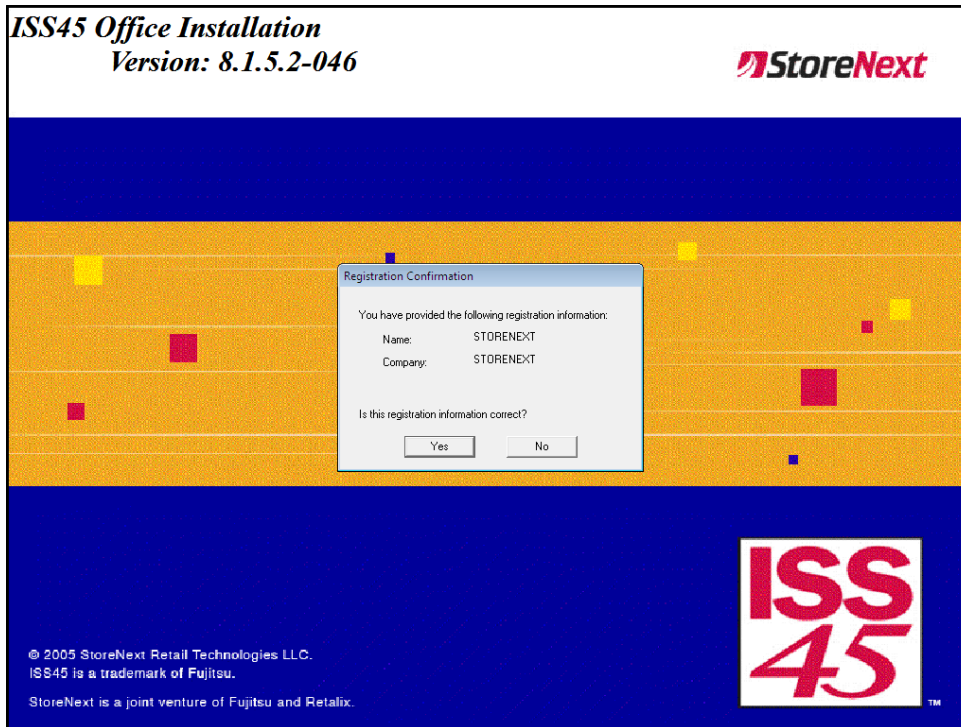
**ISS45 Office Installation**  
Version: 8.1.5.2-046



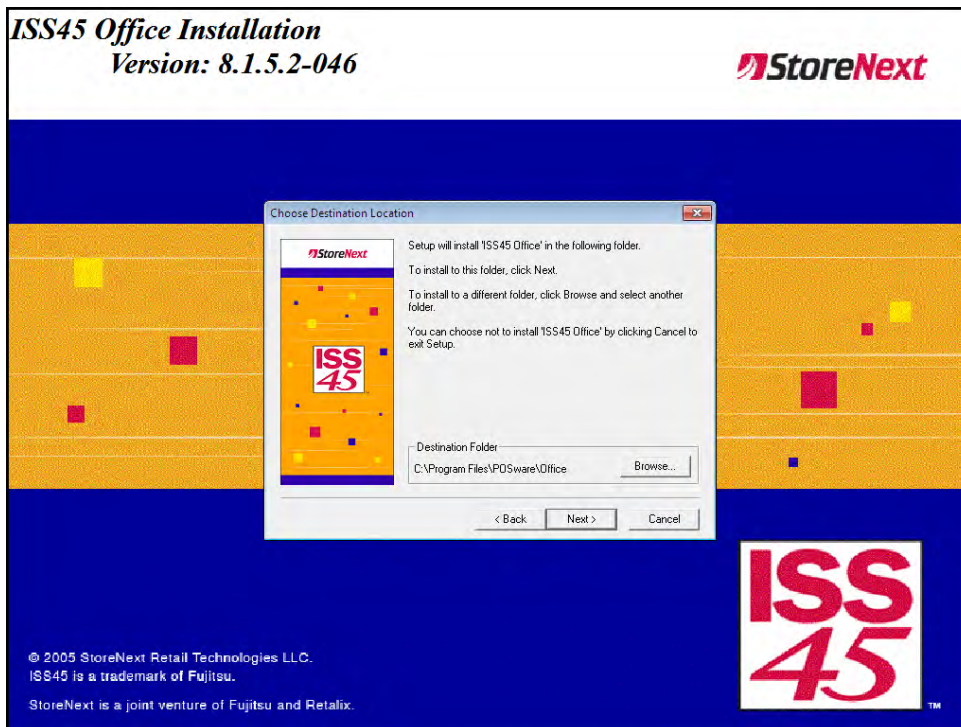
© 2005 StoreNext Retail Technologies LLC.  
ISS45 is a trademark of Fujitsu.  
StoreNext is a joint venture of Fujitsu and Retailix.



4 Click **Yes**.

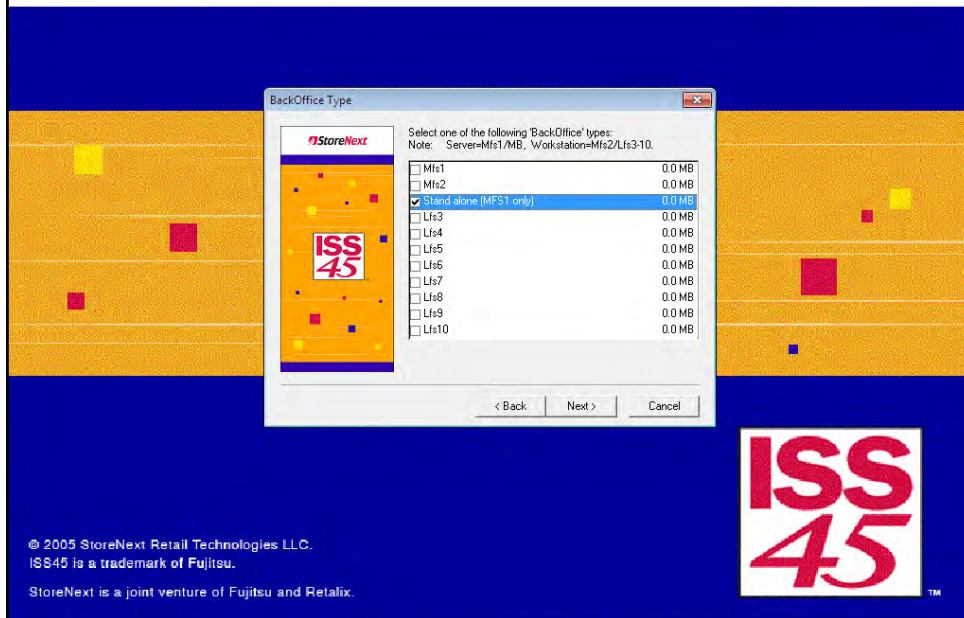


5 Click **Next** to accept default installation location.

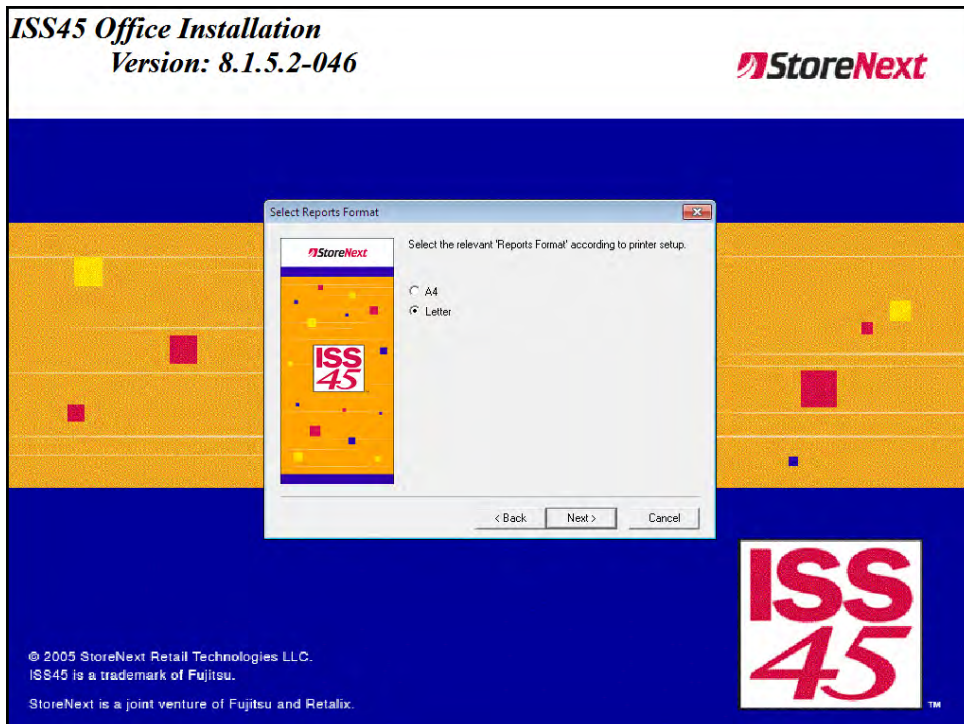


6 Select MFS2 and click **Next**.

**ISS45 Office Installation**  
Version: 8.1.5.2-046

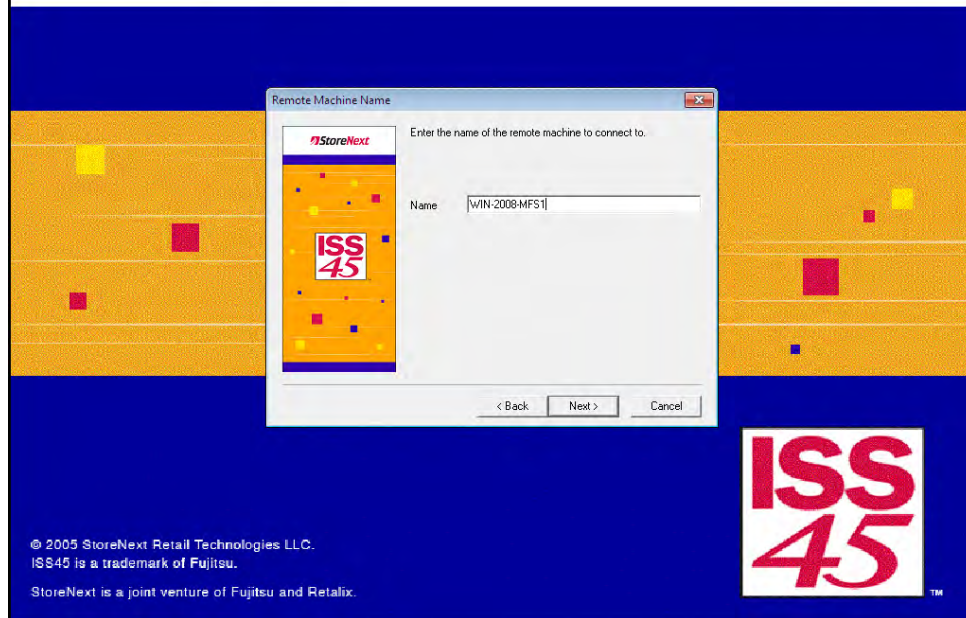


- 7 Select appropriate Report Format (default is Letter) and click **Next**.

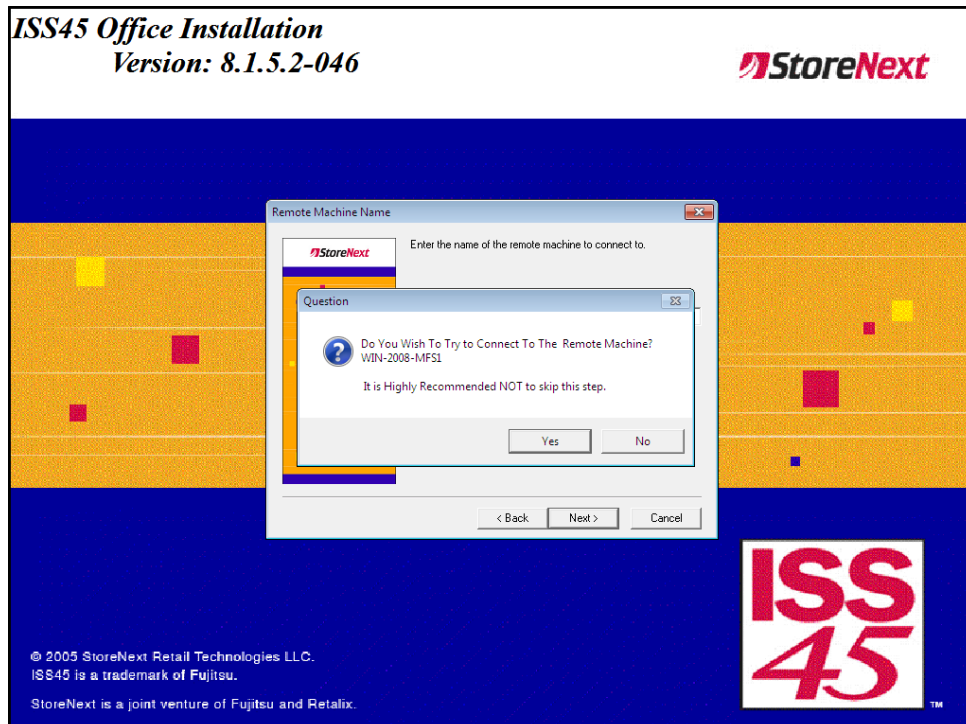


- 8 Enter the name of MFS1 and click on **Next**.

**ISS45 Office Installation**  
Version: 8.1.5.2-046

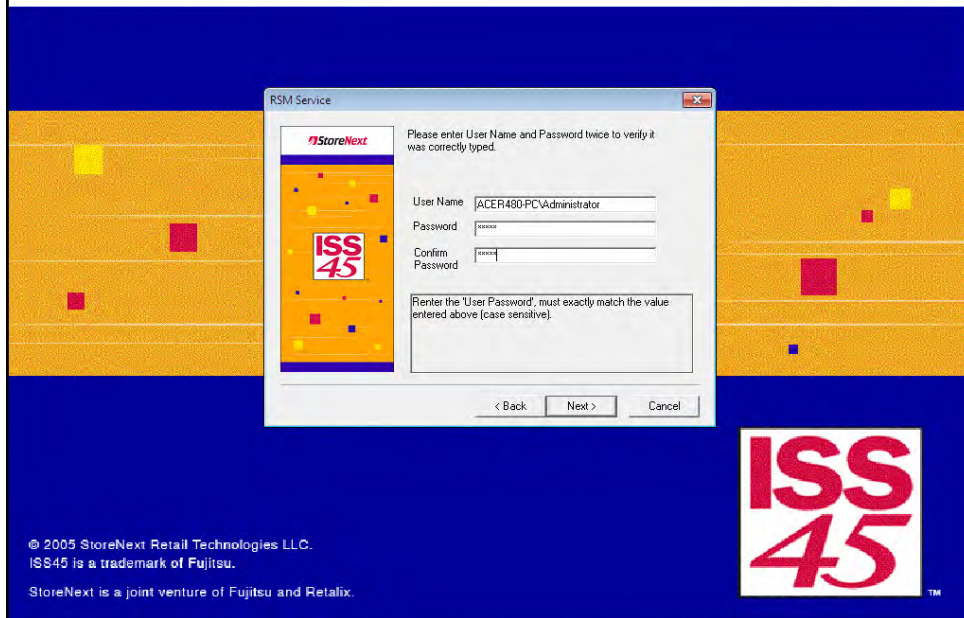


- 9 Click on **Yes** to test the connection to MFS1.



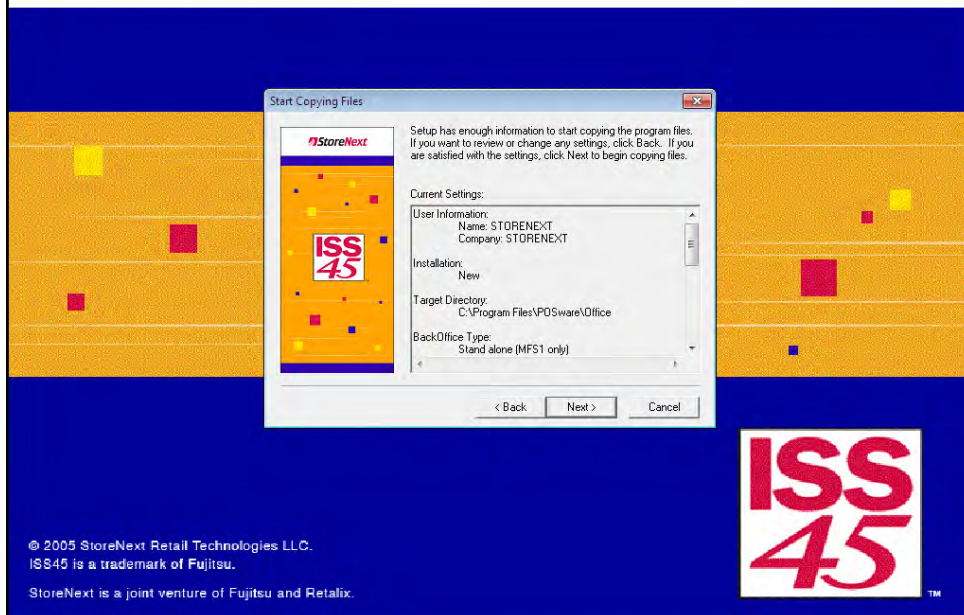
- 10 Select the appropriate answer for Fuel in System and click **Next**.

**ISS45 Office Installation**  
Version: 8.1.5.2-046



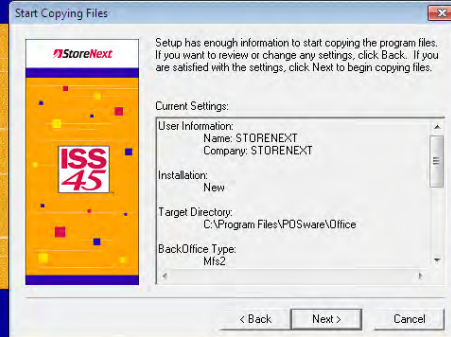
- 11 Enter and confirm Password for Administrator User and click **Next**.

**ISS45 Office Installation**  
Version: 8.1.5.2-046



- 12 Click **Next** to proceed (or **Back** to make any changes).

**ISS45 Office Installation**  
Version: 8.1.5.2-046



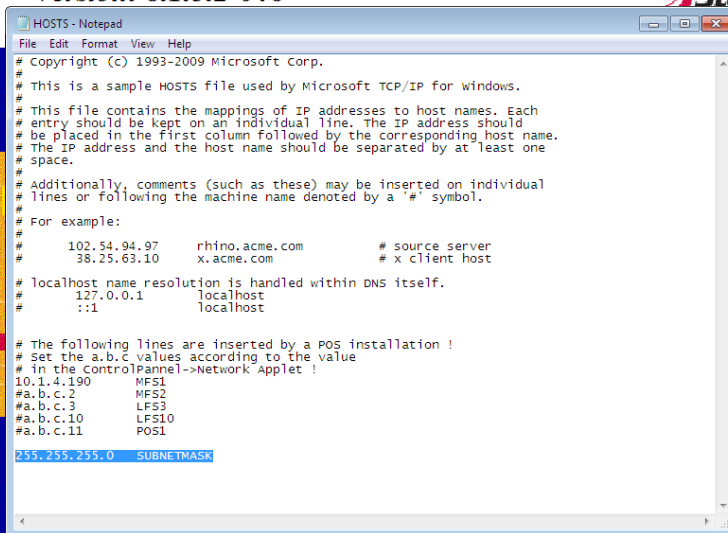
© 2005 StoreNext Retail Technologies LLC.  
ISS45 is a trademark of Fujitsu.

StoreNext is a joint venture of Fujitsu and Retailix.



13 Click **Next**.

**ISS45 Office Installation**  
Version: 8.1.5.2-046



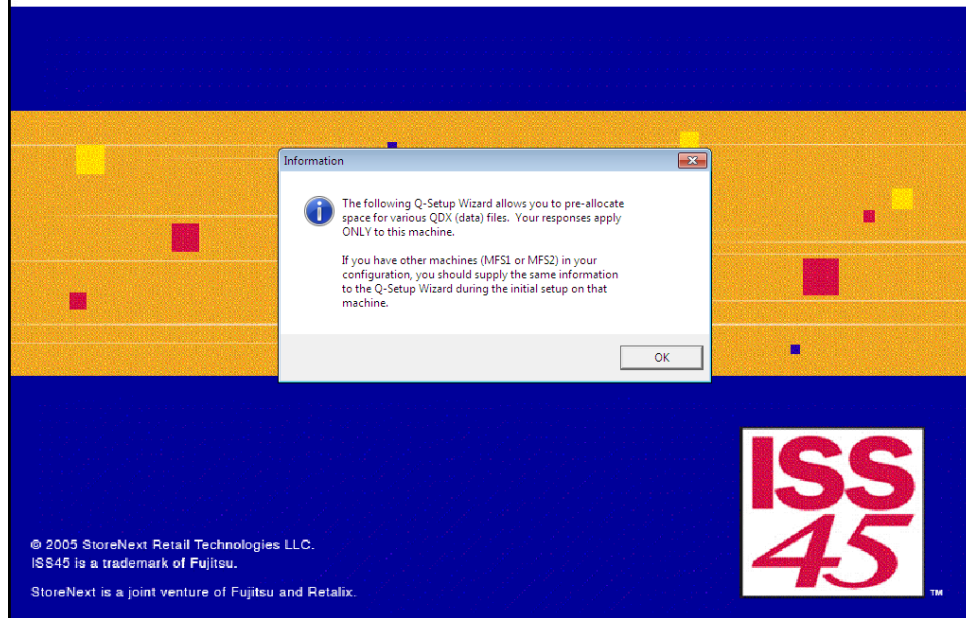
© 2005 StoreNext Retail Technologies LLC.  
ISS45 is a trademark of Fujitsu.

StoreNext is a joint venture of Fujitsu and Retailix.

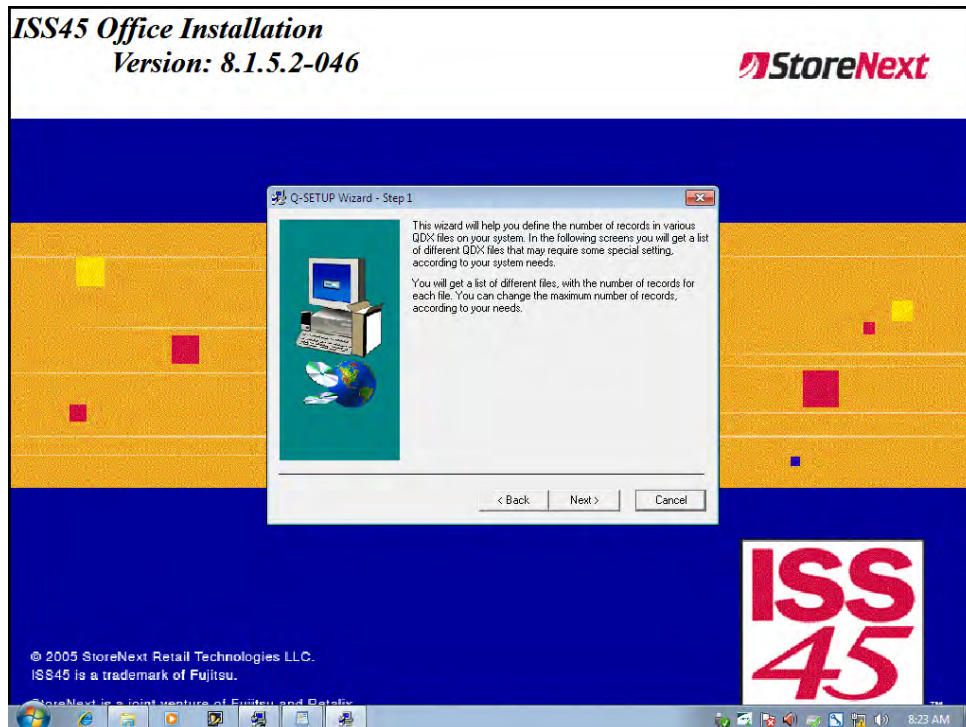


14 Edit the necessary lines, then save and close the Hosts file. Be sure to remove the # sign from the beginning of the SUBNETMASK entry (or services will not start after a reboot).

**ISS45 Office Installation**  
Version: 8.1.5.2-046

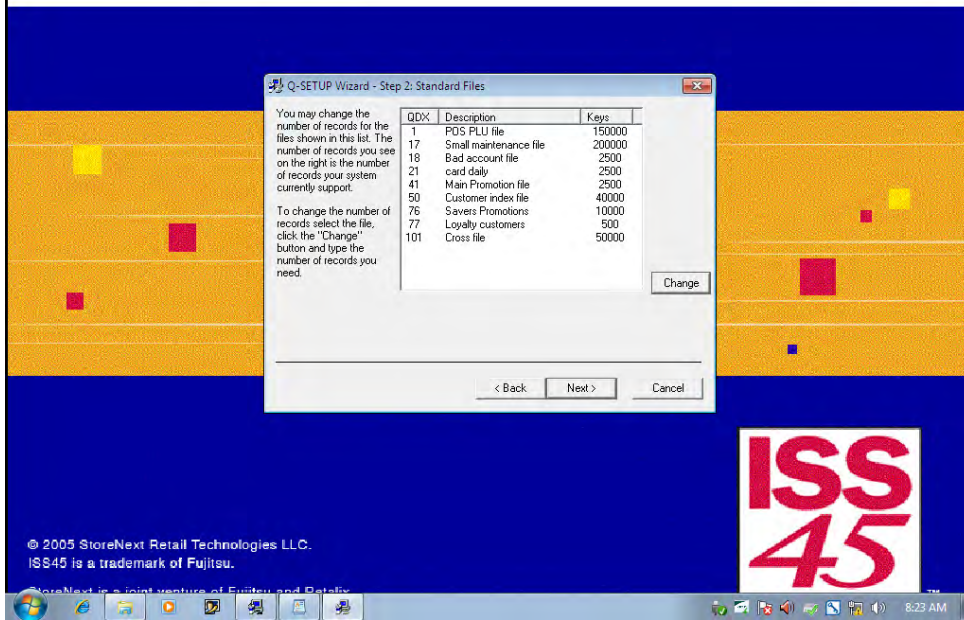


15 Click **OK** to proceed.

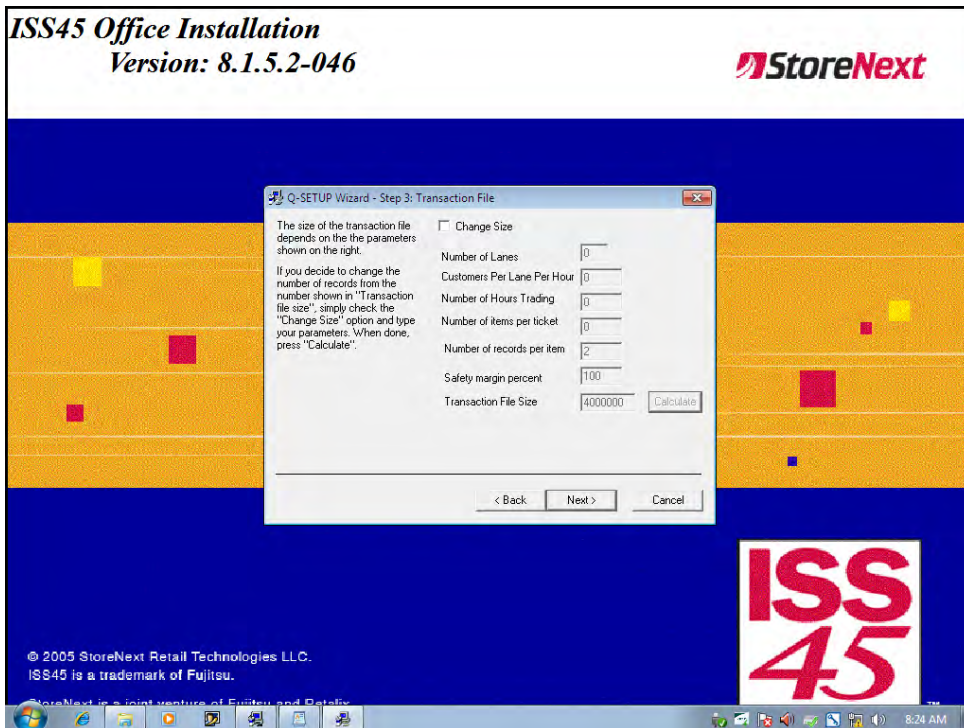


16 Click **Next** to proceed.

**ISS45 Office Installation**  
Version: 8.1.5.2-046



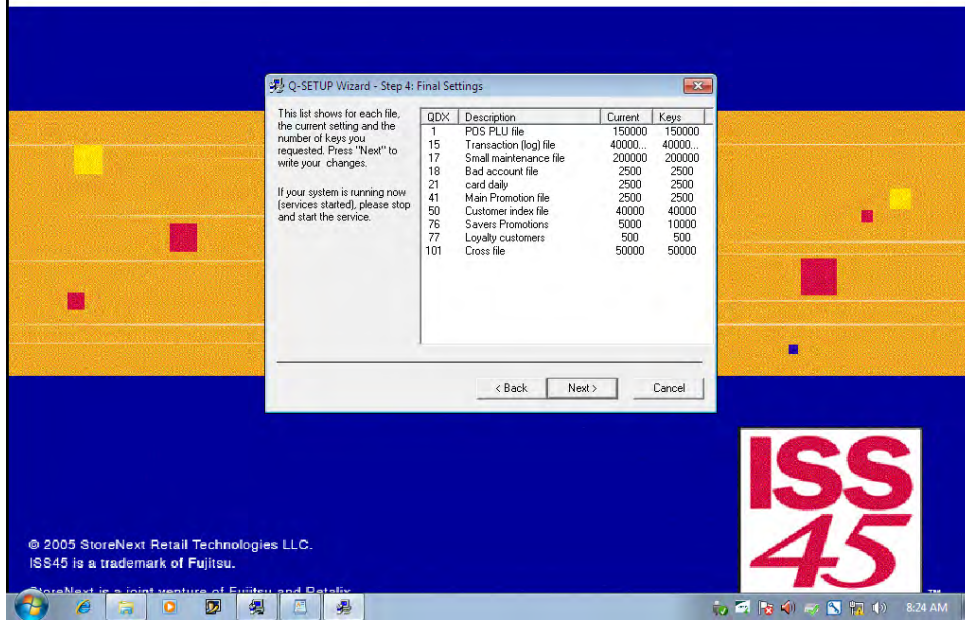
17 Click on **Change** to resize any of the qdx files or click **Next** to proceed.



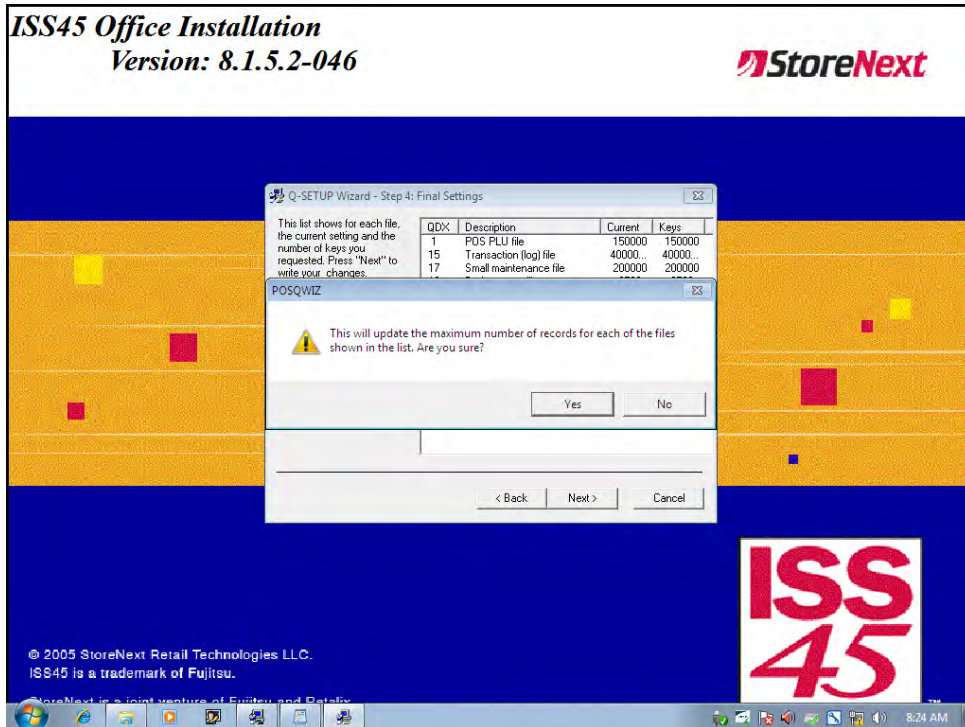
18 Click **Next** to proceed.

# ISS45 Office Installation

Version: 8.1.5.2-046

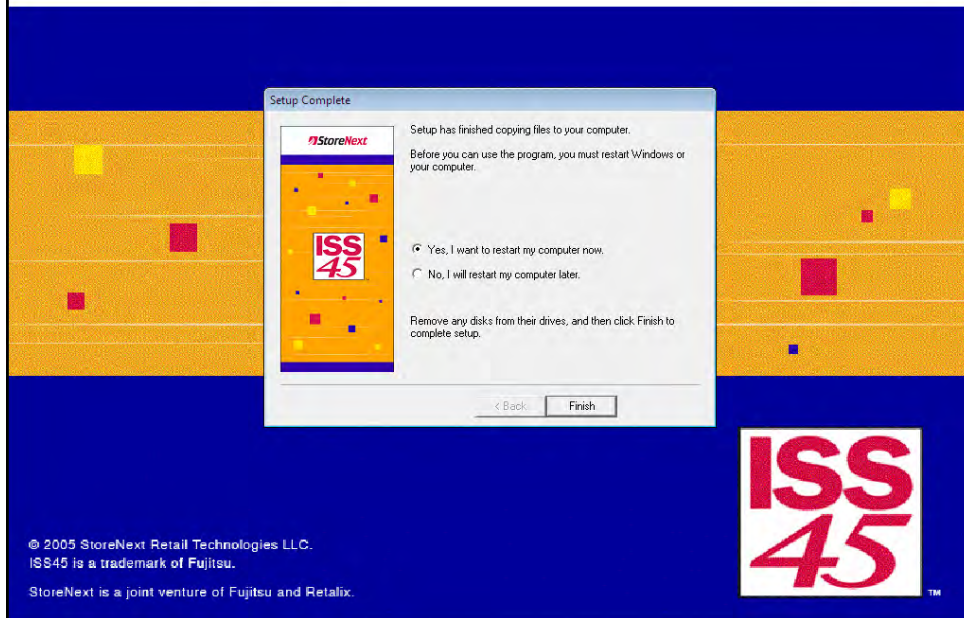


19 Click **Next** to proceed.

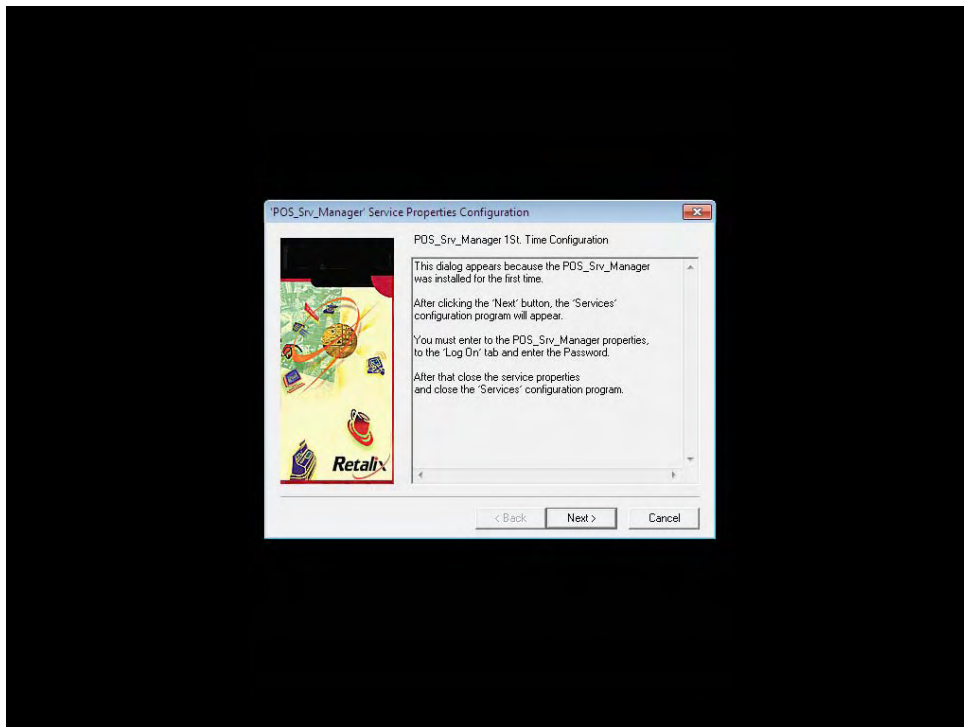


20 Click **Yes** to proceed.

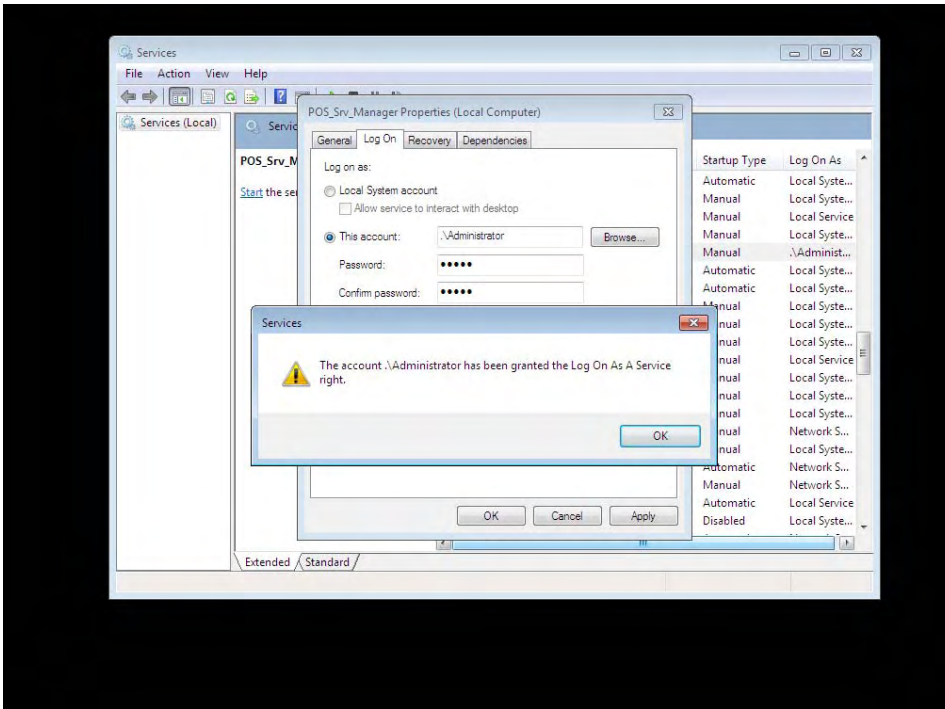
**ISS45 Office Installation**  
Version: 8.1.5.2-046



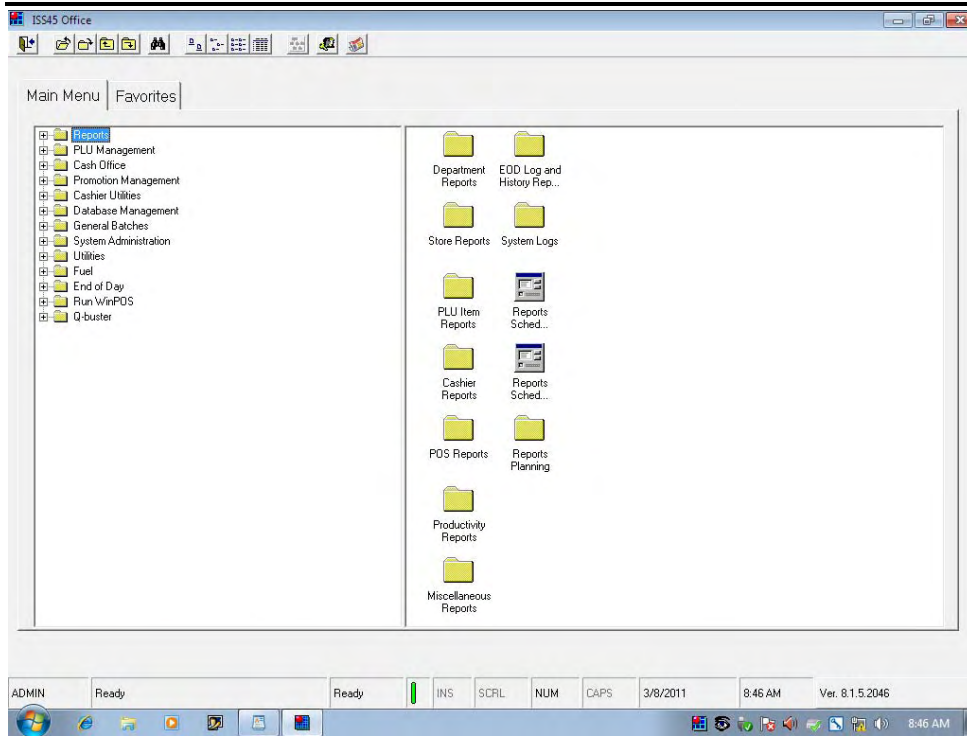
- 21 Click **Finish** to reboot computer immediately (or select No and click Finish to reboot manually at a later time).
- 22 The following screen will be displayed after MFS2 has been rebooted and the admin user has logged back into Windows. Click on **Next** to open the Services Console:



- 23 Edit the POS\_SRV\_Manager Service as shown below. Enter and confirm the password for the administrator user and click on OK.



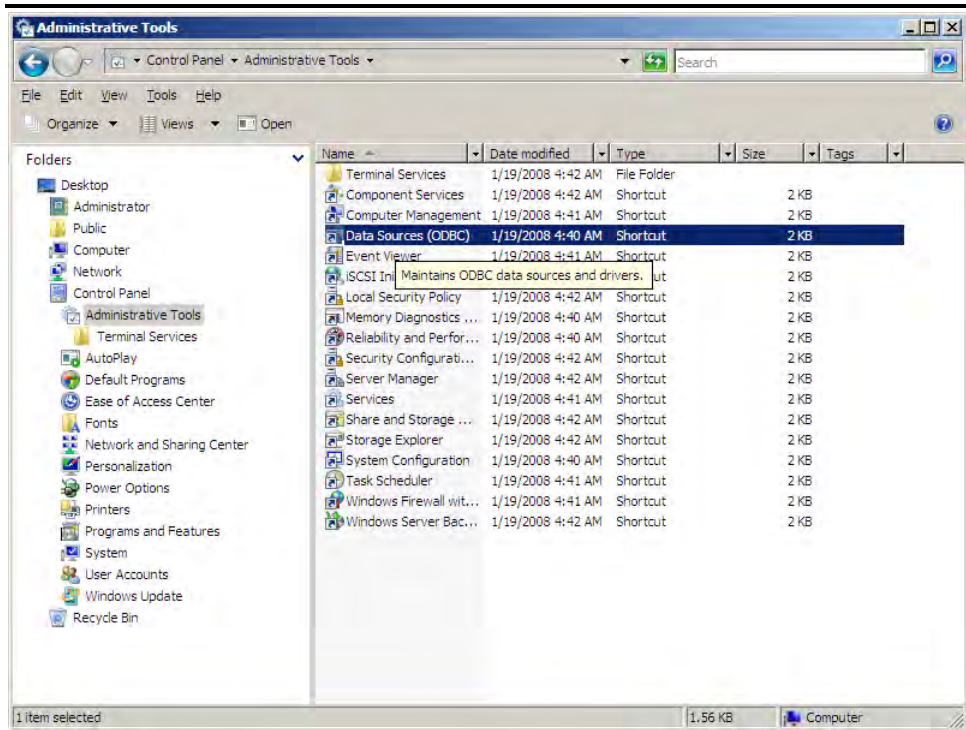
- 24 Click on **OK** to proceed.
- 25 Launch the Front Office application and sign in using the admin user and password created during the installation of MFS1. The LAN Crash Indicator light in the middle of the bottom of the screen will be Green when MFS1 and MFS2 are communicating successfully.



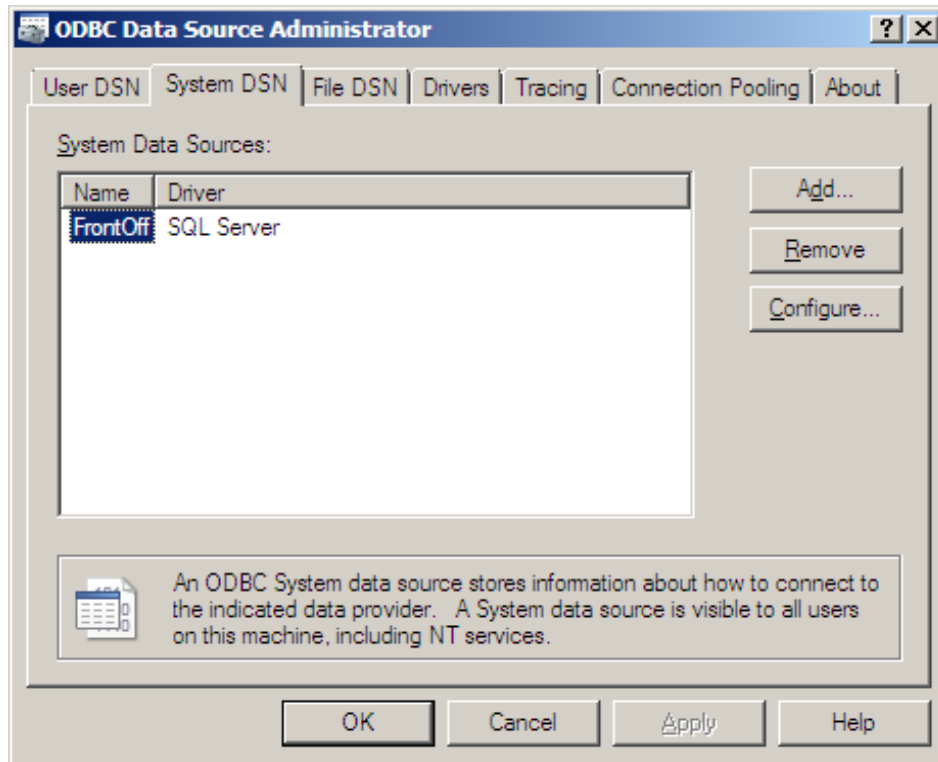
**Note:**

It is recommended that the ODBC connection to the FrontOff database be changed to increase the Long Query Time from 30,000 to 60,000 milliseconds. This will reduce the possibility of SQL Time Out errors when long running queries are performed against the database. Follow the steps outlined below to implement this change.

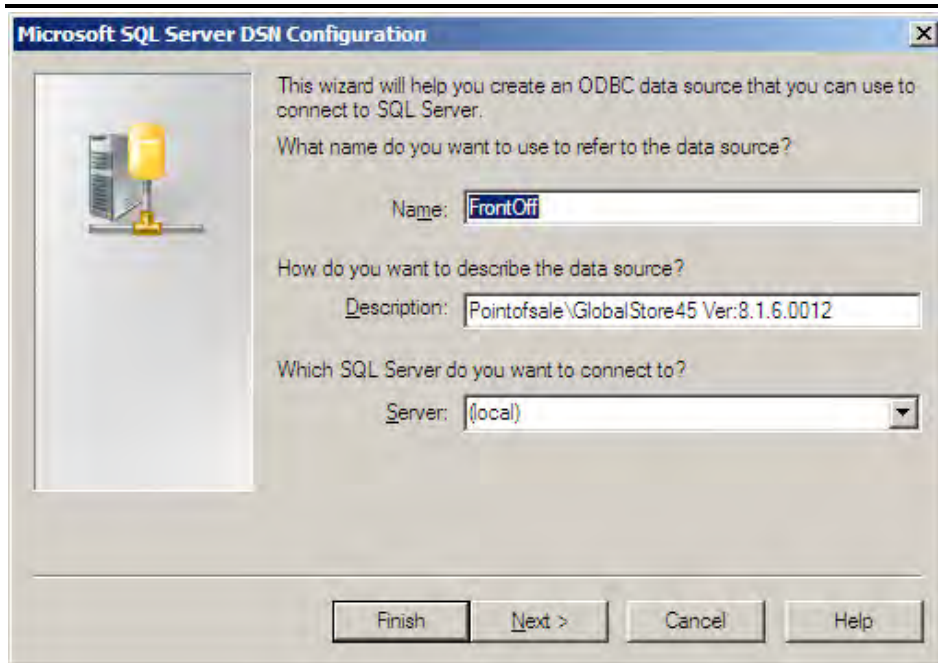
- 26 Open Data Sources (ODBC) from Administrative Tools.



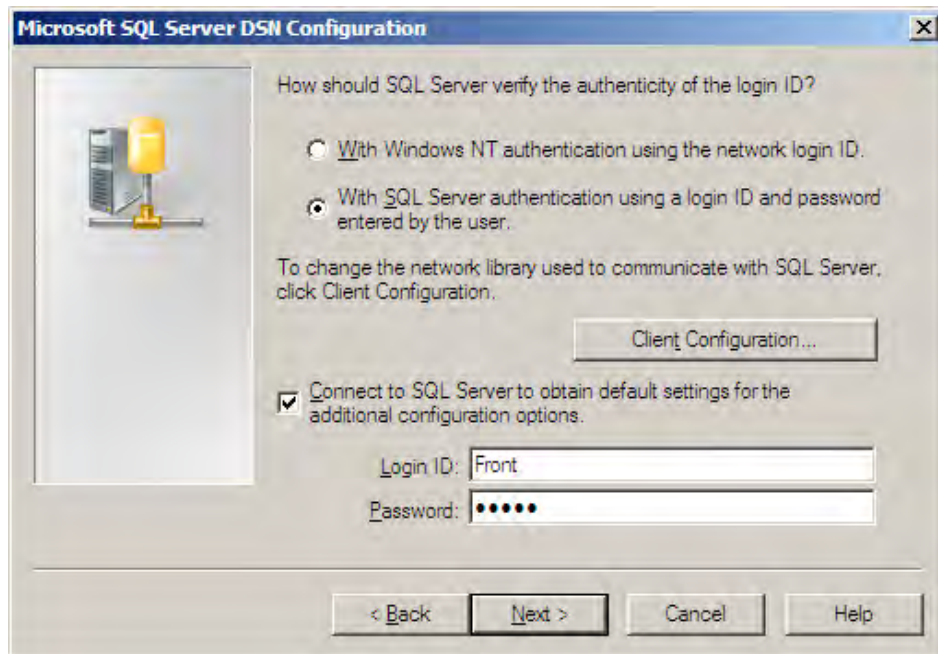
27 Click on the System DSN Tab, highlight FrontOff, and click on **Configure**.



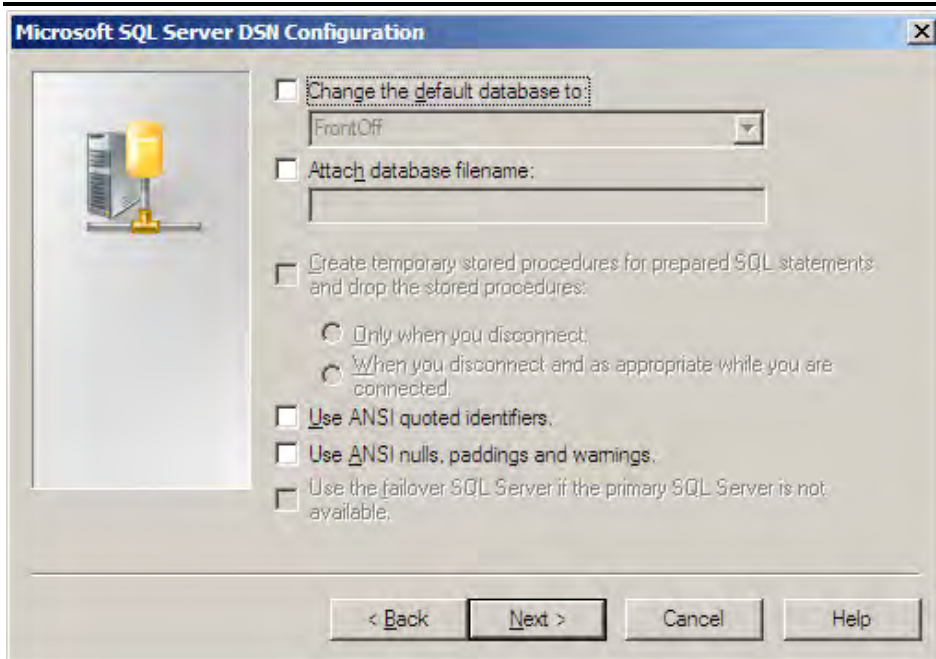
28 Accept defaults and click **Next**.



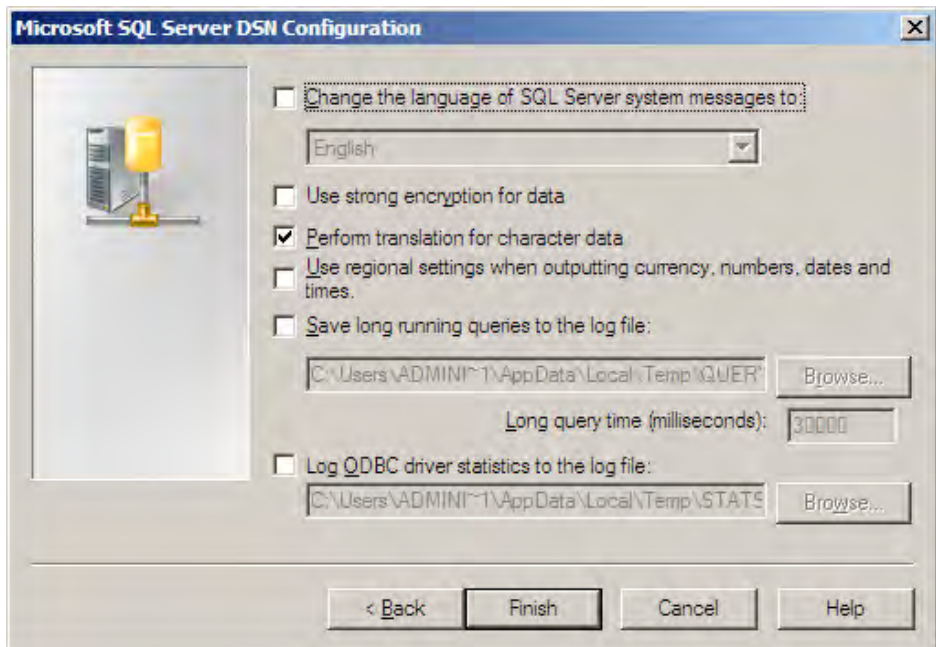
29 Accept defaults and click **Next**.



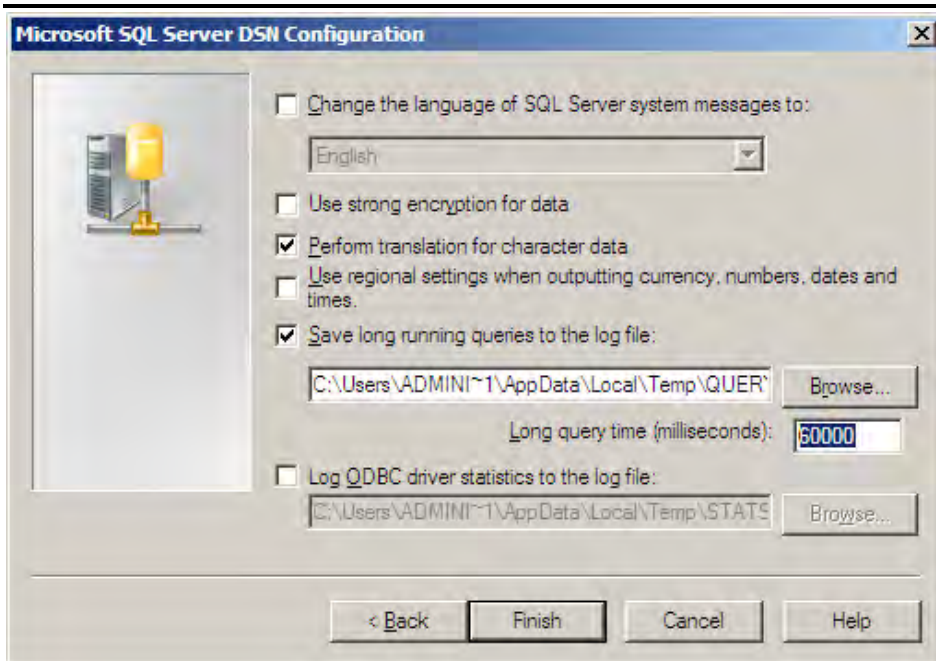
30 Select **With SQL Server authentication using a login ID and password entered by the user** and enter password Front (case sensitive).



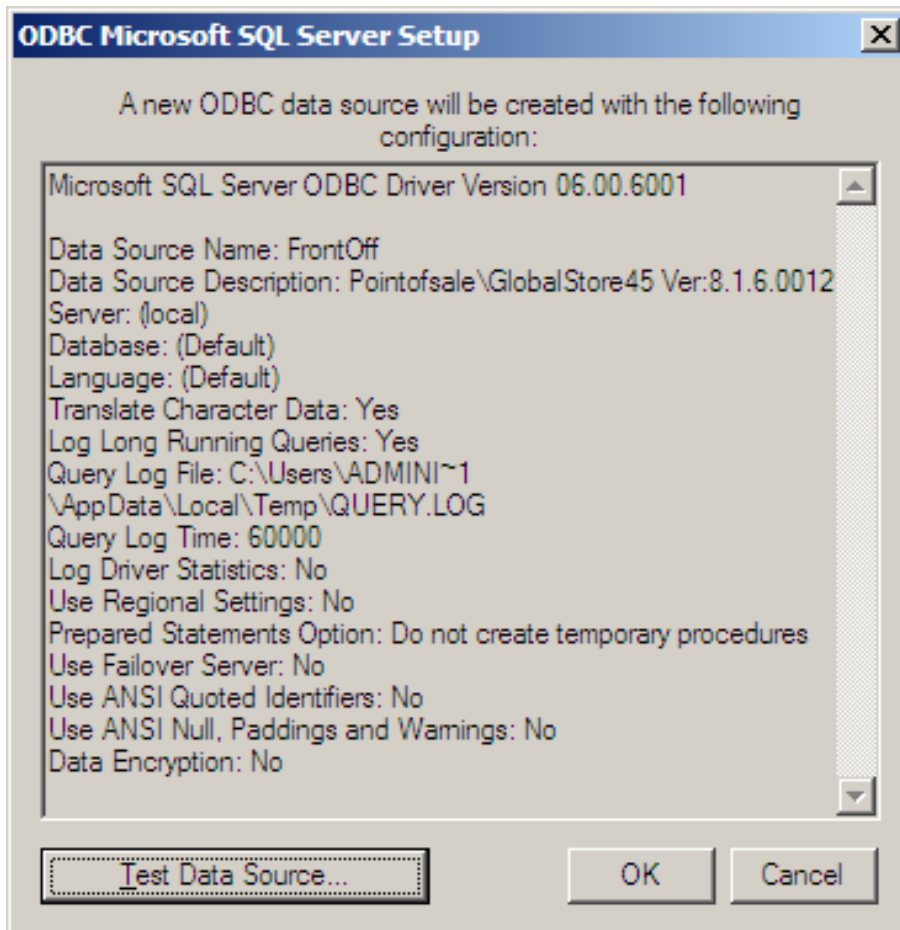
31 Click **Next**.



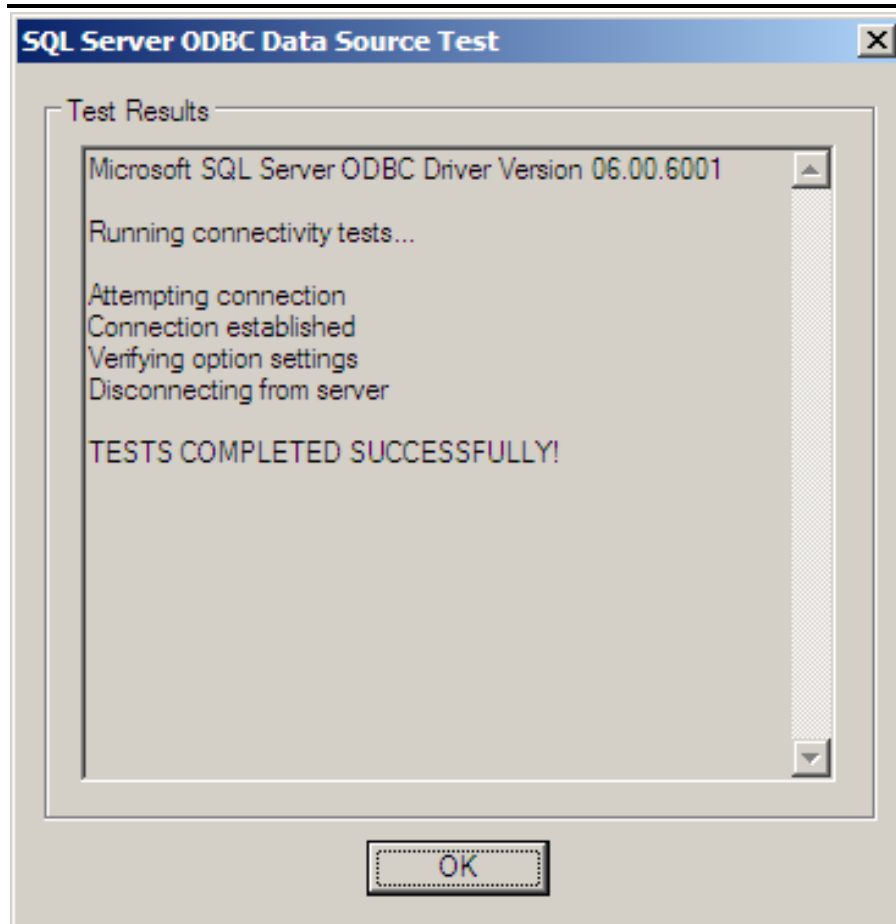
32 Select **Save long running queries to the log file** and change the 30,000 value to 60,000.



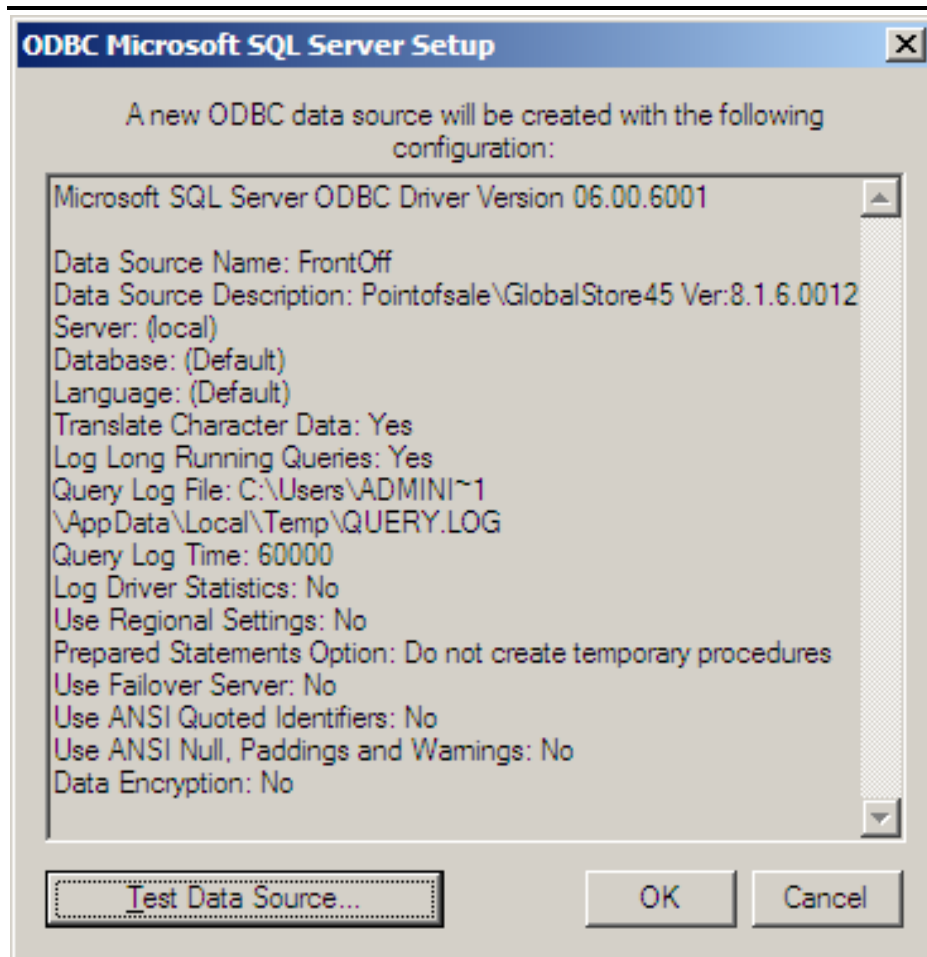
33 Click **Finish**.



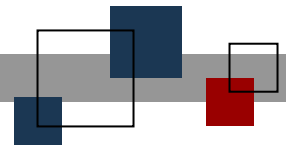
34 Click on **Test Data Source**.



35 Click **OK**.



36 Click **Cancel**.



**© StoreNext Retail Technologies LLC 2011**

StoreNext Retail Technologies LLC endeavors to ensure that the information in this document is correct and fairly stated but does not accept liability for any error or omission.

The development of StoreNext products and services is continuous and published information may not be up to date. It is important to check the current position with StoreNext. This document is not part of a contract or license save insofar as may be expressly agreed.