



 *ISS45 Version 8 Office*

 *SQL 2008 Server Installation Guide*

*8.1.6.0-050*



## ISS45 V8 Office Installation Guide – SQL 2008 Server

<b>Date of Issue</b>	<b>Product Identification Number</b>	<b>Part Number</b>	<b>Brief Description</b>
February 2011	45001/032	89000623	Version 8.1.5.2
May 2011	45001/032	89000652	8.1.5.2 Updated
January 2012	45001/032	89000706	Version 8.1.6.0

**© Copyright StoreNext Retail Technologies LLC 1995-2012  
All rights reserved**

This publication is protected by federal copyright law. This document and its contents are the proprietary, confidential information and property of StoreNext.. Unauthorized disclosure, reproduction, distribution or use of this document and/or its contents in any form is strictly prohibited. No part of this publication may be reproduced or transmitted into any human or computer language in any form or by any means, stored in a retrieval system, transmitted, redistributed, translated or disclosed to third parties, or de-compiled in any way including, but not limited to, photocopy, photograph, electronic, mechanical, magnetic or manual without the express written permission of StoreNext Retail Technologies LLC or its licensors, if any. This document, notwithstanding the above, may be distributed in electronic or printed form to personnel who are employed by either (1) a StoreNext customer of the subject system of this document or (2) personnel from an authorized StoreNext dealer of the subject system of this document. All copies, so distributed and/or so authorized, shall contain a full copy of this copyright notice.

StoreNext Retail Technologies LLC has prepared this manual for use by users, authorized third parties and personnel of StoreNext Retail Technologies LLC as a guide to the proper installation, operation, customization and/or maintenance of StoreNext Retail Technologies LLC equipment and software. The drawings and specifications contained herein are the property of StoreNext Retail Technologies LLC and/or its licensors.

StoreNext Retail Technologies LLC endeavors to ensure that the information in this document is correct and fairly stated but does not accept liability for any error or omission. StoreNext Retail Technologies LLC makes no representation or warranties with respect to the contents hereof, and specifically disclaims any implied warranties of merchantability or fitness for a particular purpose or non-infringement. No commitments by StoreNext or its suppliers are made from this documentation which is provided for information only.

Development of StoreNext products and documentation is continuous: StoreNext Retail Technologies LLC reserves the right to revise this publication and to make changes from time to time in the contents hereof or in the products herein described or discussed without notice and without any obligation of StoreNext Retail Technologies LLC to notify any person or organization of such revision or changes. Information published in this document will likely become obsolete over time and it is recommended that users regularly check for updates and newer versions.

The trademarks StoreNext and Retailix are registered trademarks or trademarks of Retailix; all other trademarks or registered trademarks are the property of their respective owners. Third-party products, services, or company names referenced in this document may be trademarked or copyrighted by their respective owners, and are for identification purposes only.

Copyrights, trademarks and license agreements shall be governed and construed in accordance with the laws of the State of Texas and the Federal Arbitration Act, and shall benefit Retailix, its successors, and assigns.

Address comments and corrections to:

**StoreNext Retail Technologies LLC**  
Software Program Director  
797 Commonwealth Drive  
Warrendale, PA 15086

# Table of Contents

Table of Contents.....	2
Overview .....	3
SQL Server 2008 Installation .....	4
Backwards Compatability (SQLDMO) SQLServer2005_BC.msi .....	15
SQL Server 2008 Service Pack 1 Installation .....	19
Removing the “sa” Password.....	23
Enable Named Pipes .....	25
Disable Data Execution Prevention (DEP).....	27

# Overview

This document will guide you through the installation of:

- SQL Server 2008
- SQLDMO pack install
- SQL Service 2008 Service Pack 1
- Removing the “sa” password
- Enabling Named Pipes
- Disabling Data Execution Prevention (DEP)

The recommended hardware requirements for SQL 2008 Standard Edition (32-bit) and StoreNext are:

- CPU = P4 - 2.0 GHz or higher
- RAM = 4 GB or higher
- HD = 80 GB or higher

Software requirements for MFS1 are:

- Windows Server 2008 Standard Server

**Note:**

Windows Server 2000 is no longer supported by SQL Server 2008.

Prerequisites (\* = Installed by installation wizard if they do not exist)

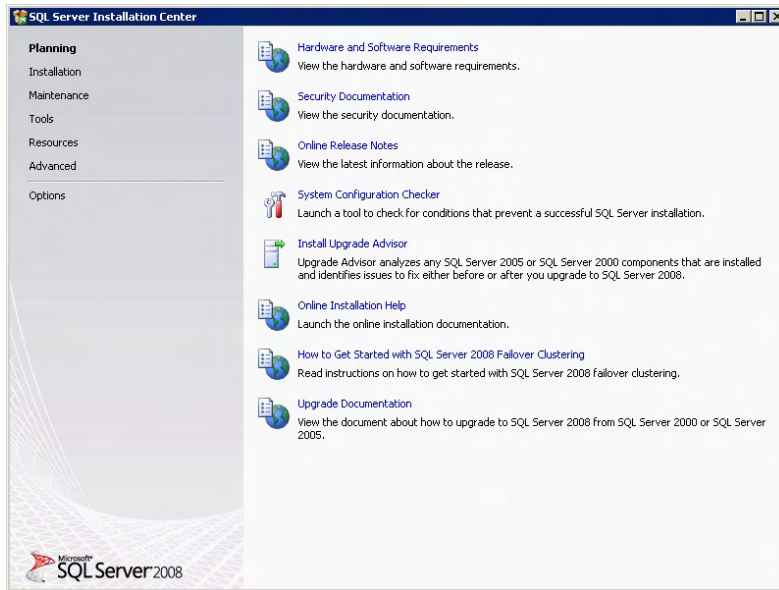
- .Net Framework 3.5sp1
- SQL Server Native Client\*
- SQL Server Setup Support Files\*
- Internet Explorer 7
- SQLDMO Pack (backward compatibility)

**Note:**

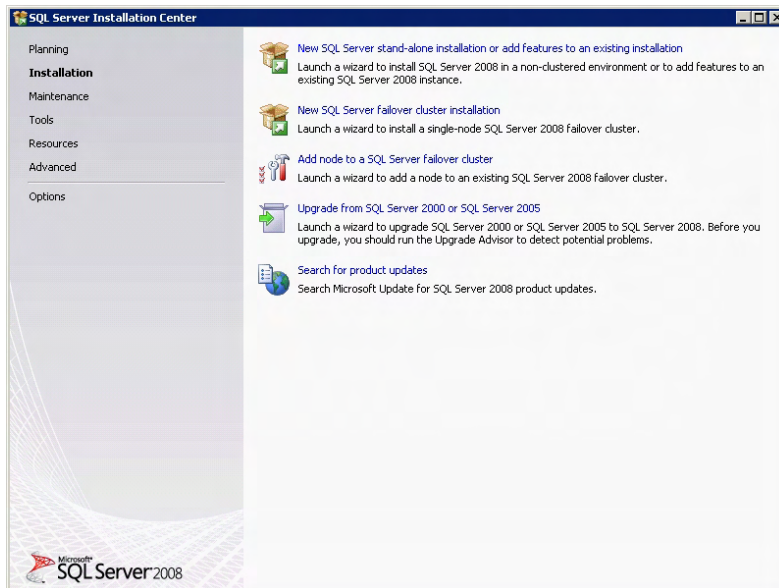
You must be logged into Windows as the Administrator User when installing any StoreNext related applications on MFS1, MFS2, an LFS Workstation or POS Terminal.

# SQL Server 2008 Installation

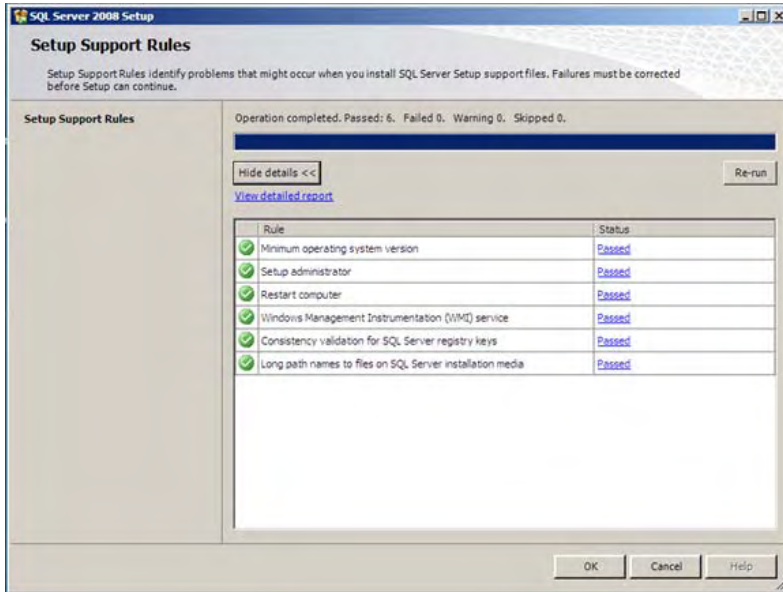
- 1 From the CD or from the folder containing the SQL source files, click setup.exe. **SQL Server Installation Center** is displayed.



- 2 On the left hand side click the **Installation** tab Installation options are displayed



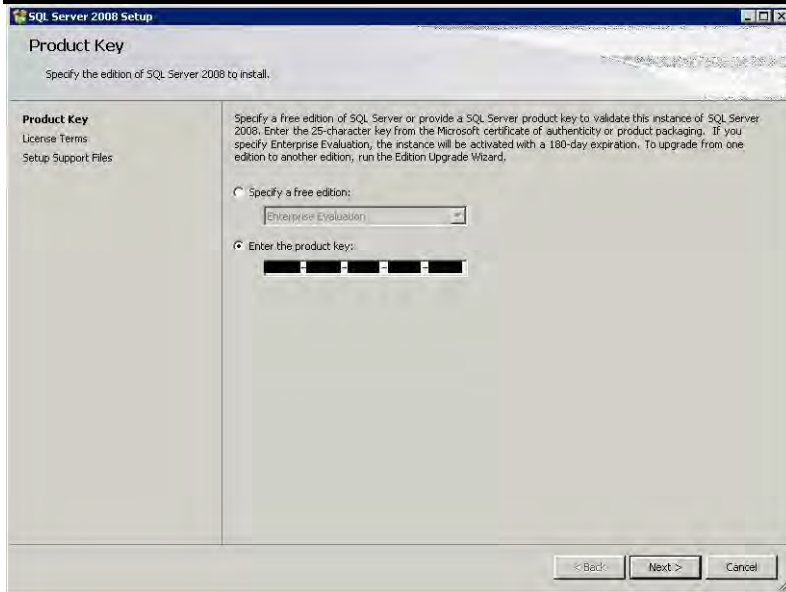
- 3 Select the top Hyperlink **New SQL Server stand-alone installation or add features to an existing installation**. A SQL Server 2008 message appears and then the **Setup Support Rules** screen will be displayed.




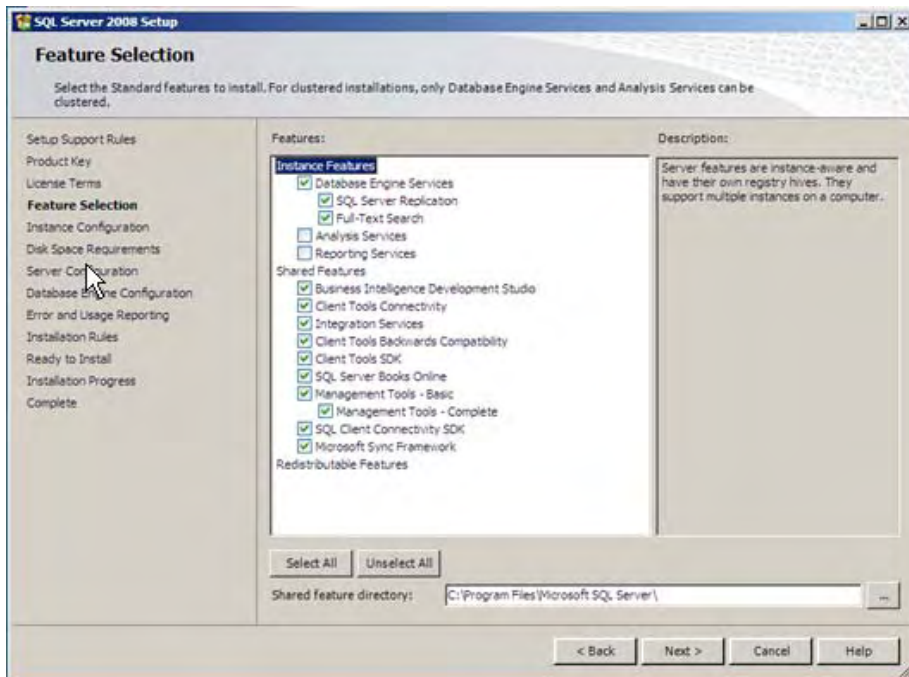
- 4 Click . The **SQL Server 2008 Setup, License Terms** is displayed:

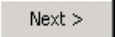


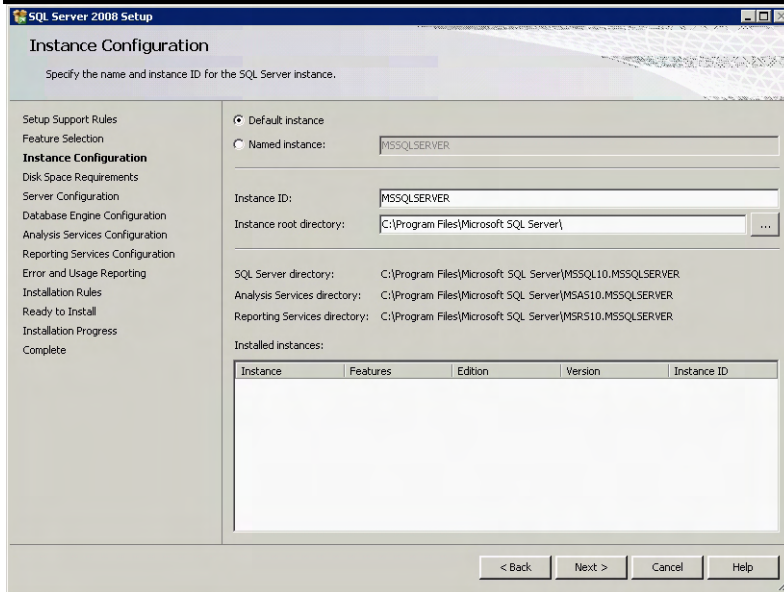
- 5 Approve the license agreement by checking the  **I accept the license terms**. The **Product Key** screen is displayed:



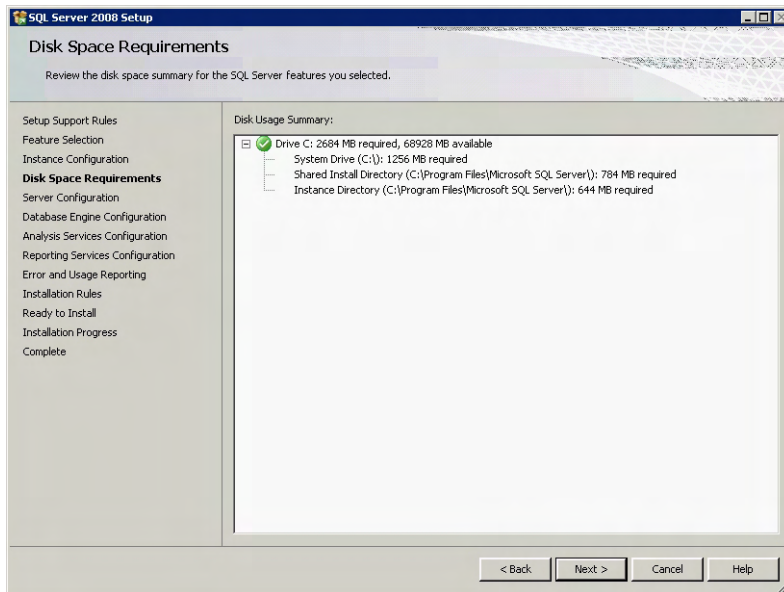
- 6 Enter your product License key and click . The **Feature Selection** screen is displayed.



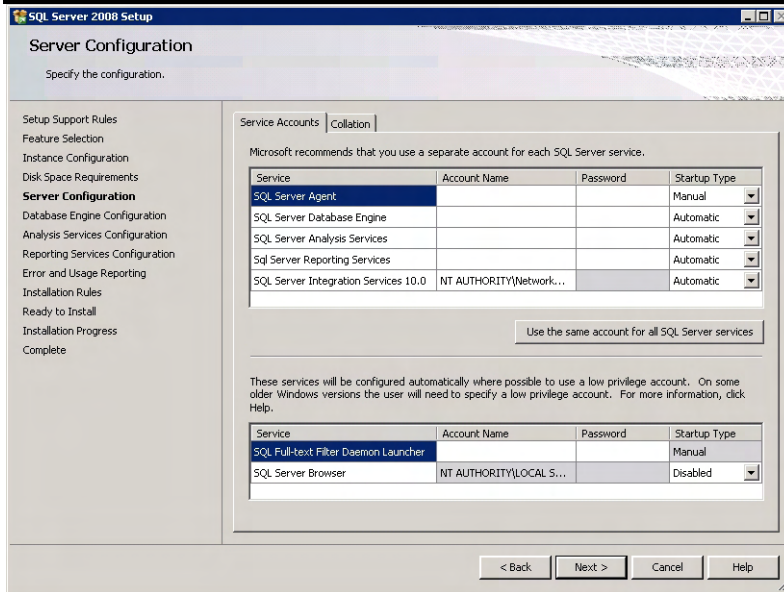
- 7 Click **Select All** then uncheck **Analysis Services** and **Reporting Services**.
- 8 Click  to continue. The **Instance Configuration** screen is displayed.



9 Accept all defaults and click **Next >**. The **Disk Space Requirements** screen is displayed.

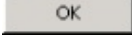


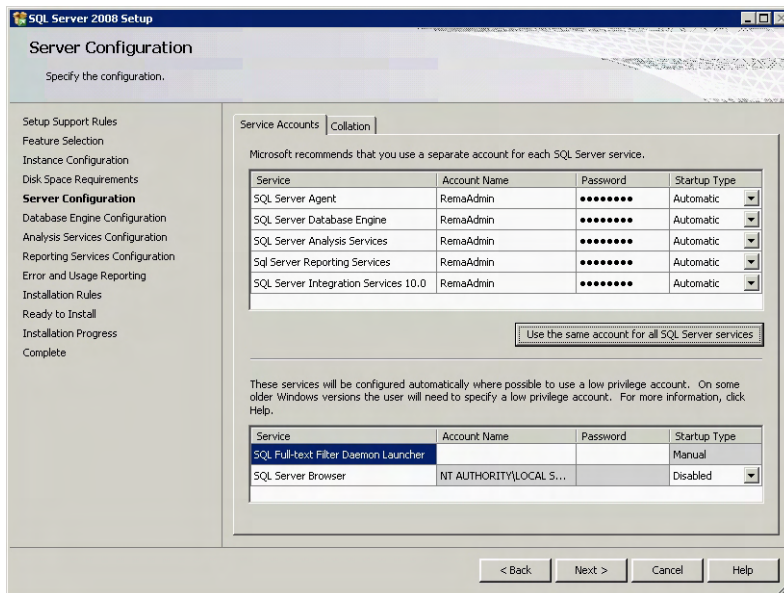
10 Click **Next >**. The **Server Configuration** screen is displayed.



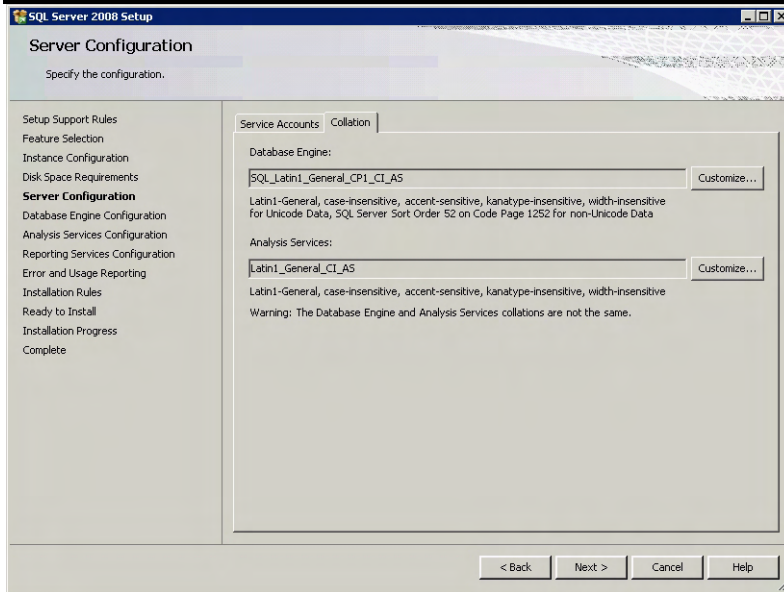
- 11 Click the  button. The **Use the same account for all SQL Server 2008 Services** dialog box is displayed:



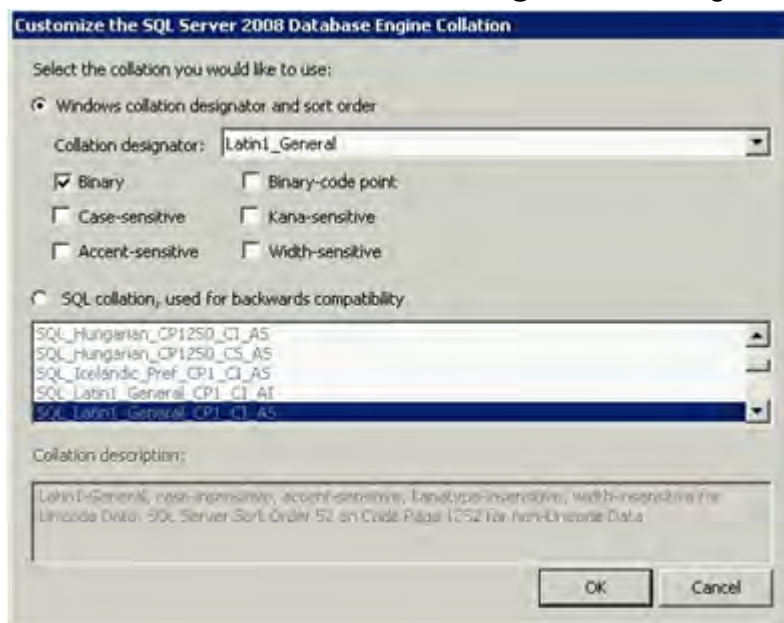
- 12 Enter the Administrator name and password and click the  button. The **Server Configuration** screen displays:



- 13 Select the **Collation** tab.

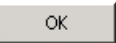


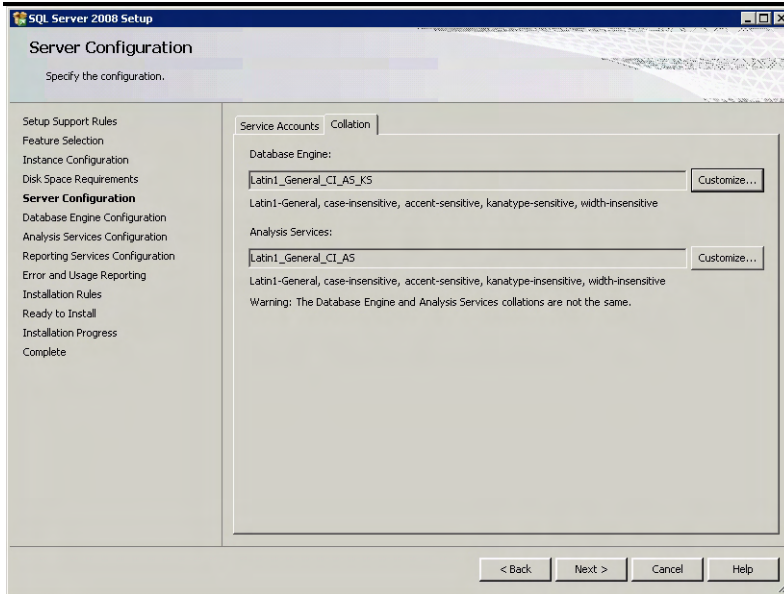
14 Click  for the **Database Engine** and change the settings as follows:



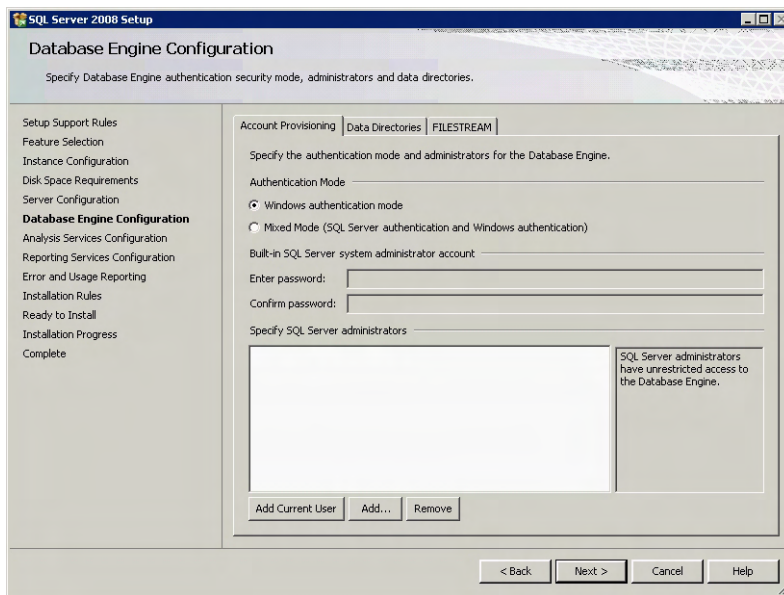
15 Select the **Windows Collation designator and Sort Order** radio button and then (from the drop-down list) select **Latin 1 General Language**.

16 Select the **Binary** checkbox.

17 Click the  button to return to the **Collation** tab.



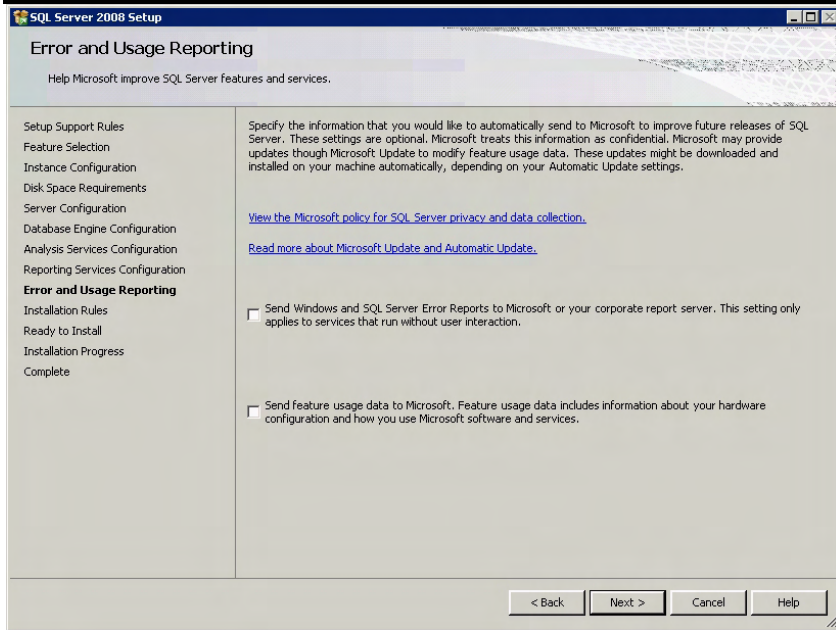
18 Click **Next >**. The **Database Engine Configuration** screen is displayed.



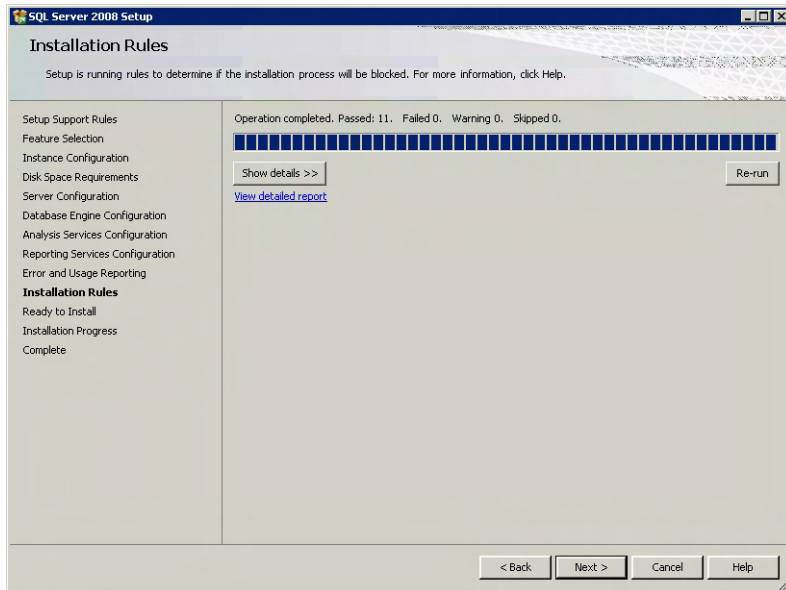
19 Select **Mixed Mode (Windows Authentication and SQL Server Authentication)** radio button and enter a valid Password for user "sa". (*This password will be cleared after the SQL Install.*)

20 Click **Add Current User** (under Specify SQL Server administrators) and click

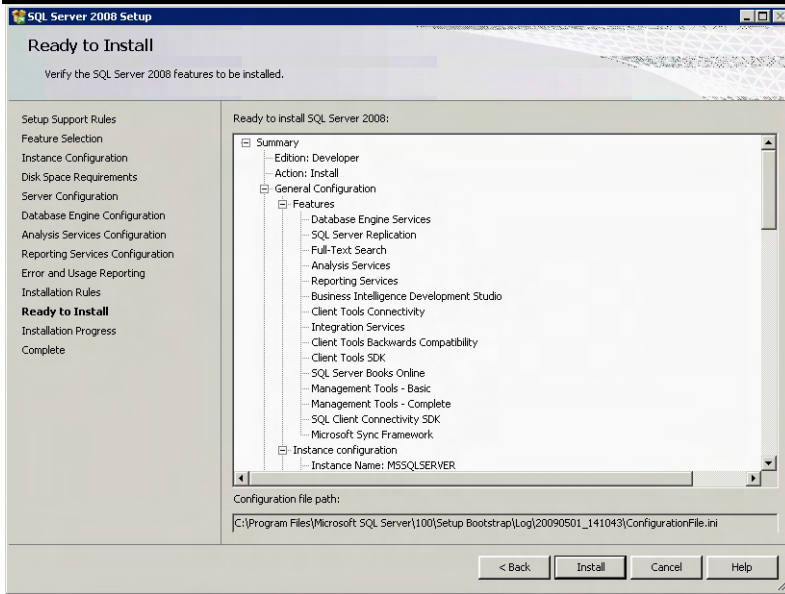
**Next >**. The Error and Usage Reporting Screen displays:




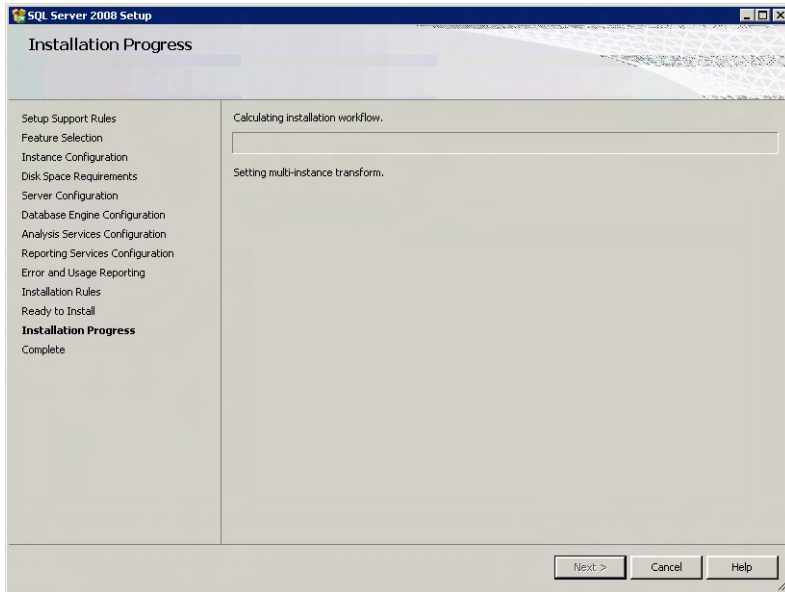
21 Click . The **Installation Rules** screen displays.

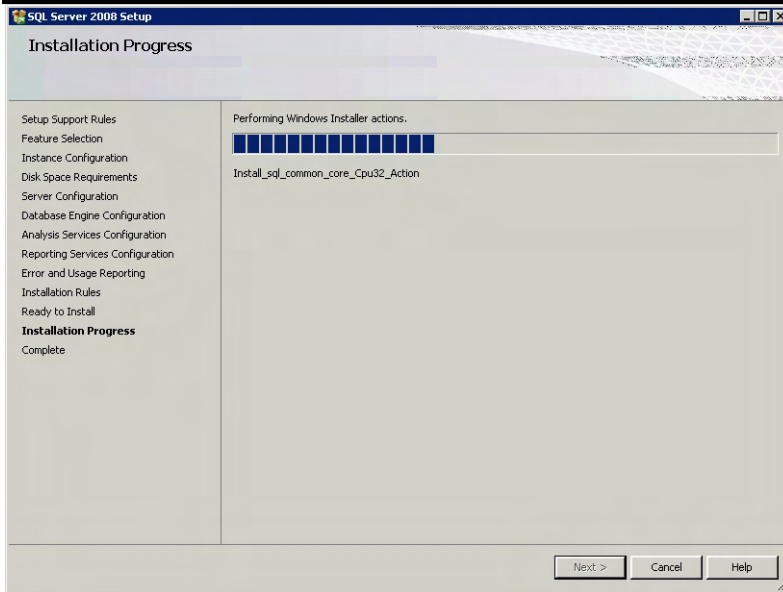


22 Click . The **Ready to install** screen is displays:

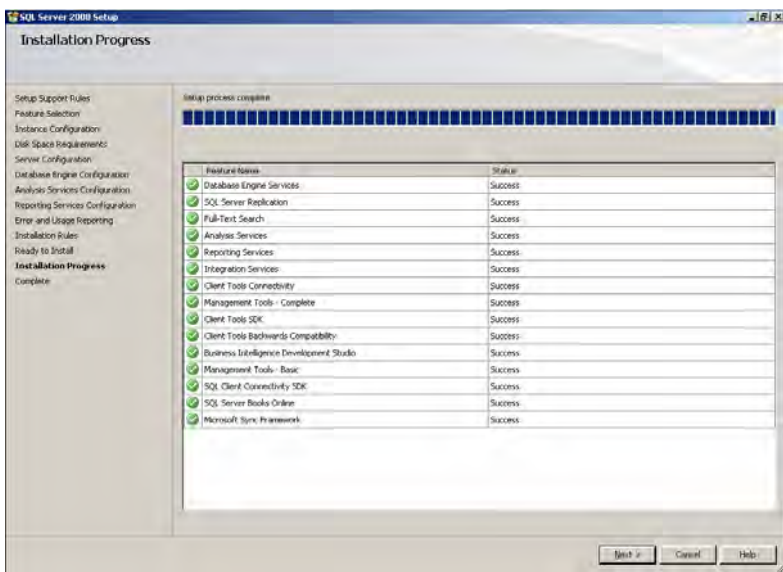


23 Click  to start the SQL installation process, the **Installation Progress** is displays.

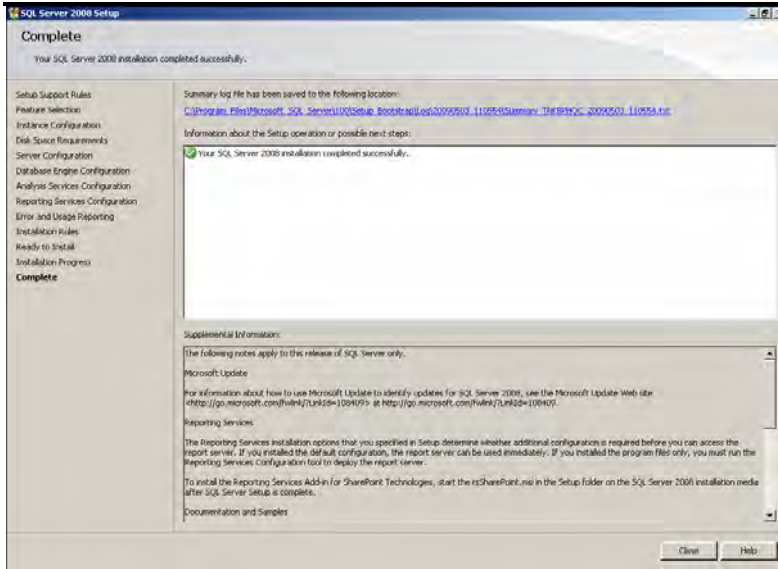




24 View the details of the install.



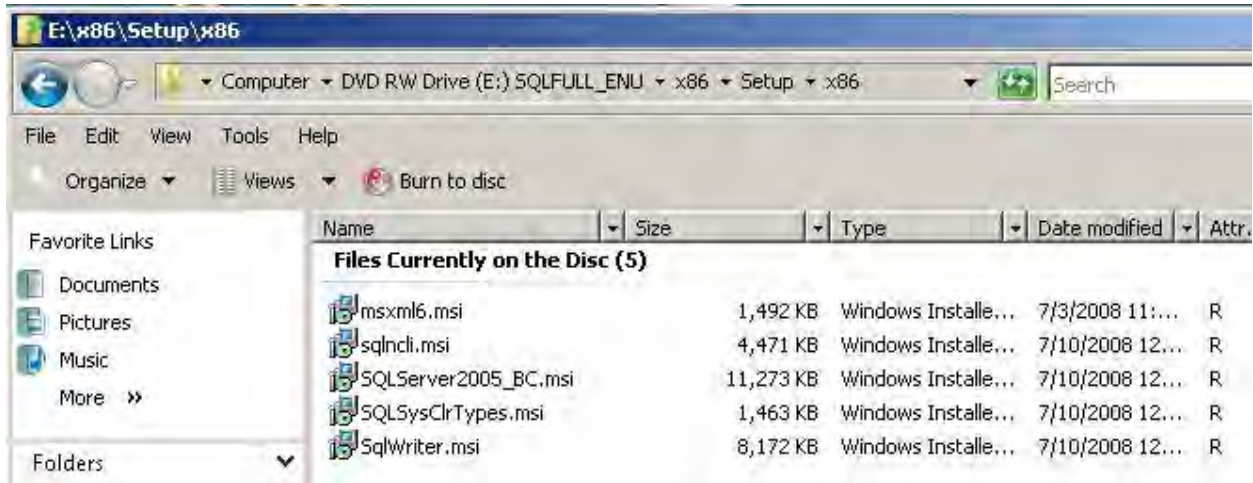
25 Click **Next >**. The **SQL Server 2008 Setup Complete** screen is displayed.



- 26 Click  to finish the SQL install. It is recommended that MFS1 be rebooted at this time.

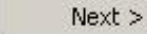
# Backwards Compatability (SQLDMO) SQLServer2005\_BC.msi

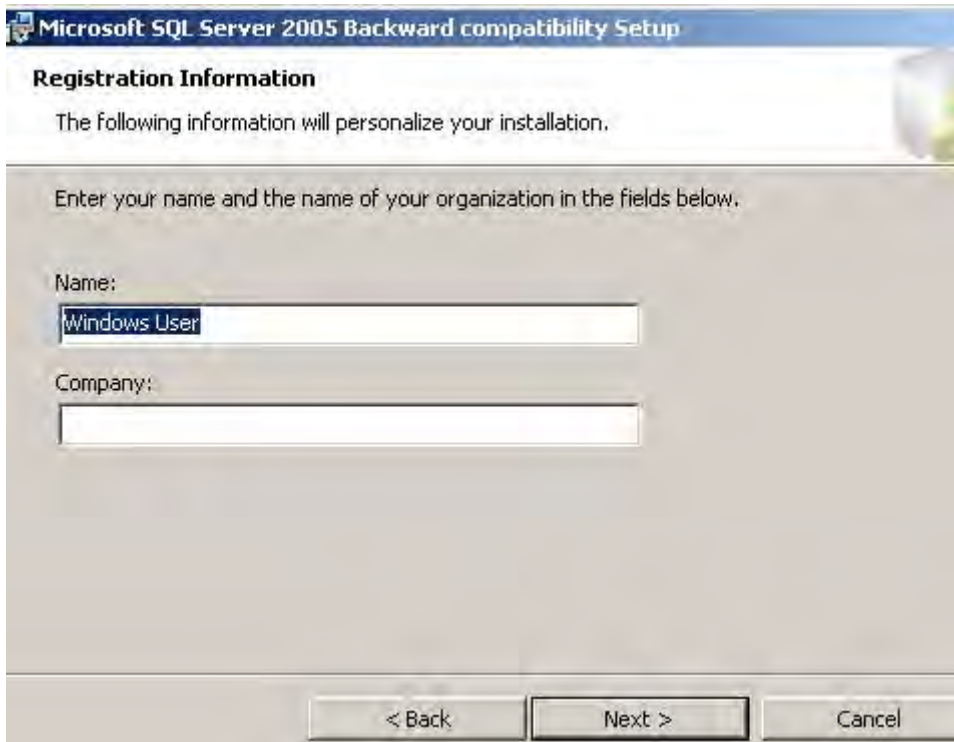
- 1 Run SQLServer2005\_BC.msi from x:\x86\setup\x86 (where x: is your CD drive).

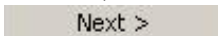


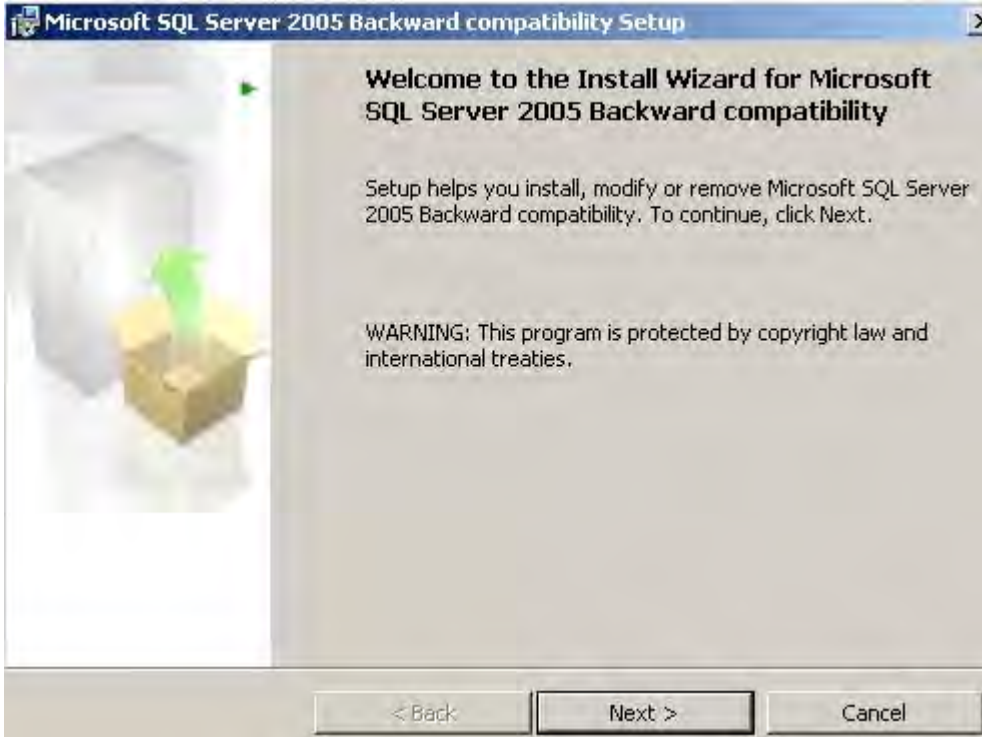
- 2 **License Agreement** – Select radio  I accept the terms in the license agreement button and click

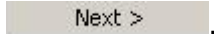


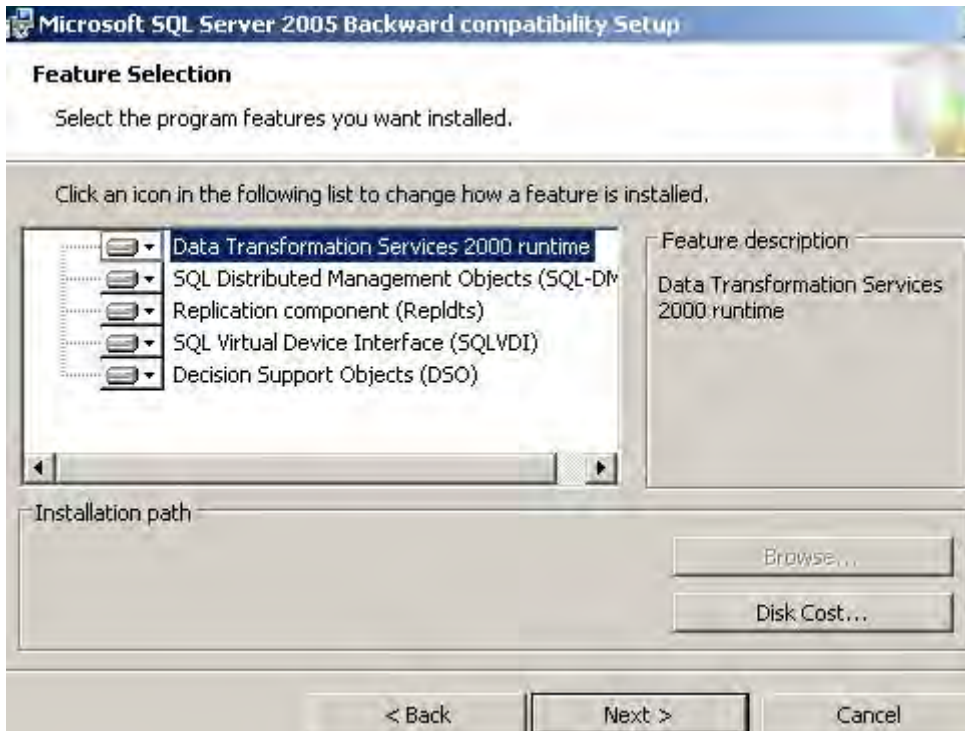
3 **Registration Information** – Enter your information and then click .



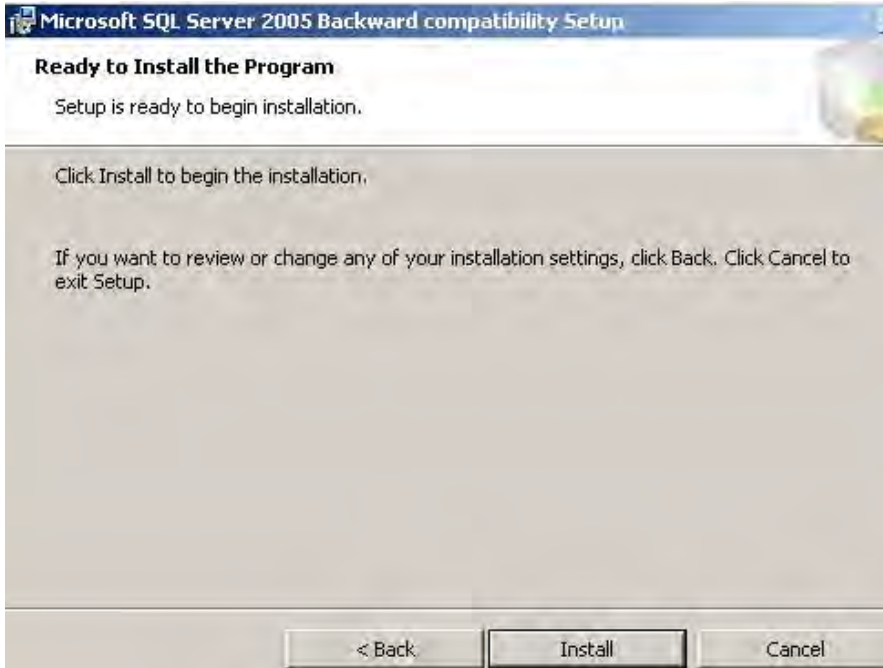
- 4 Microsoft SQL Server 2005 Backward compatibility Setup – is displayed.  
Click  .



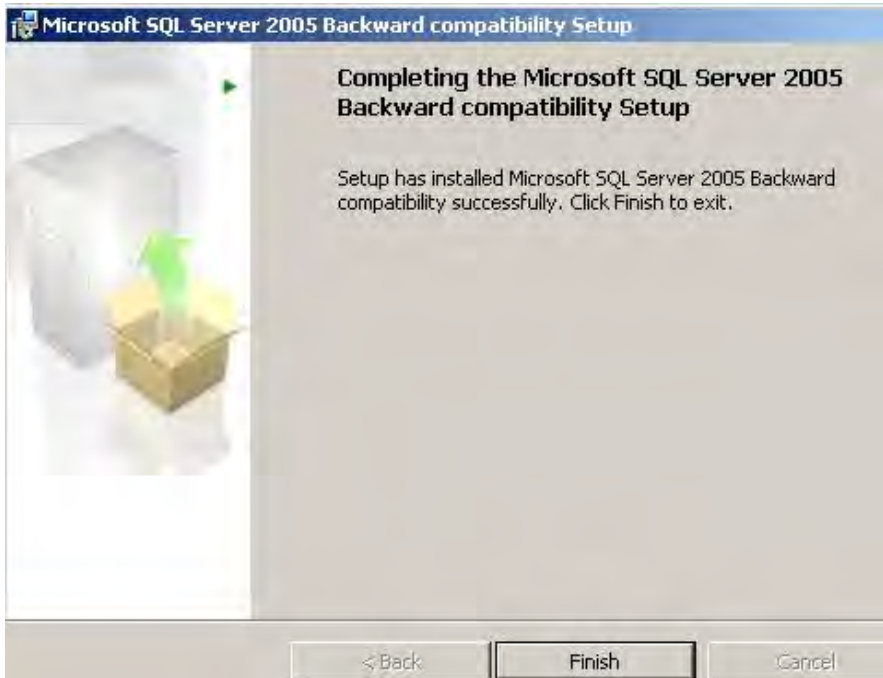
- 5 Feature Selection – Click  .



6 Ready to install the Program – Click **Install** .

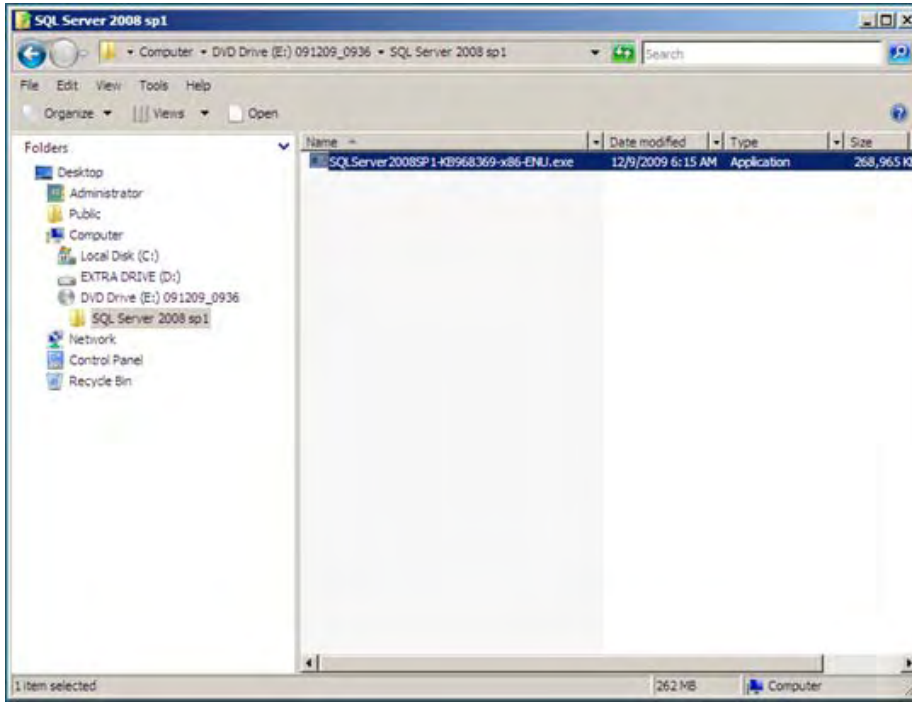


7 Completing the Microsoft SQL Server 2005 Backward compatibility Setup – Click **Finish** .

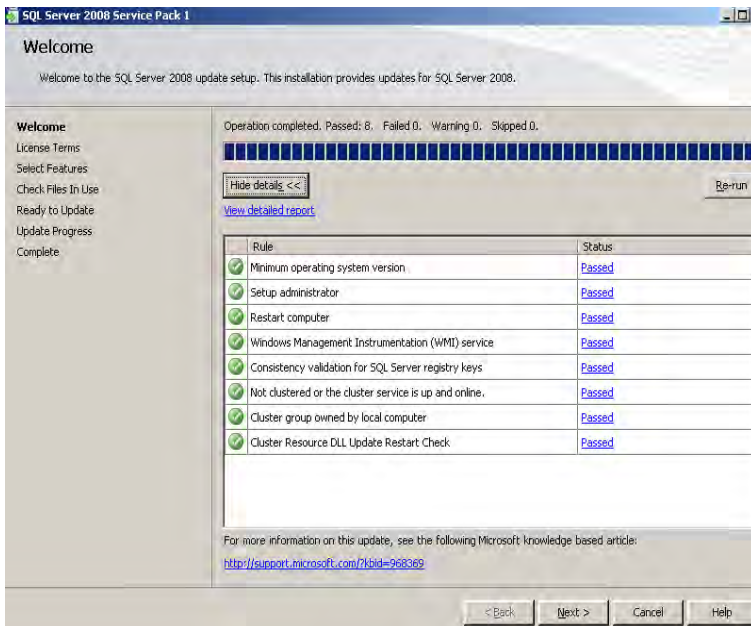


# SQL Server 2008 Service Pack 1 Installation

- 1 Run the SQL Server 2008 Service Pack 1 installation. (It will extract the files.)



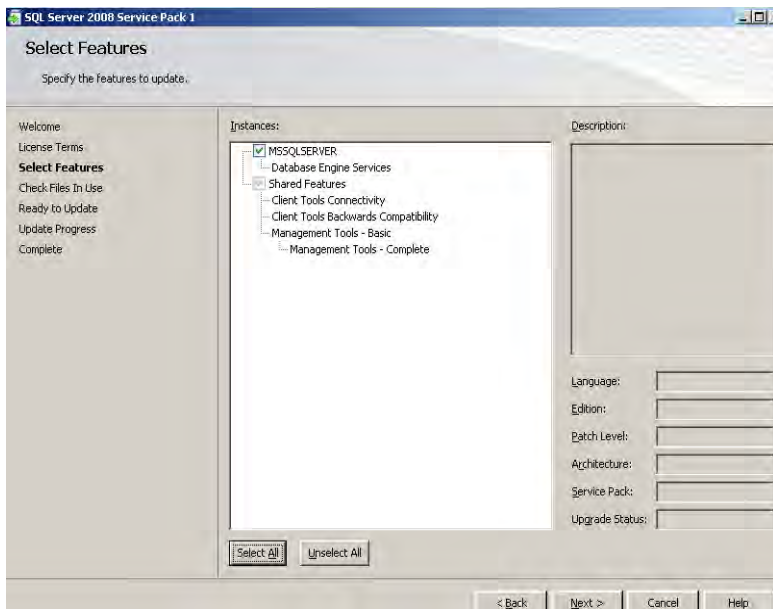
- 2 **Welcome-** Click .



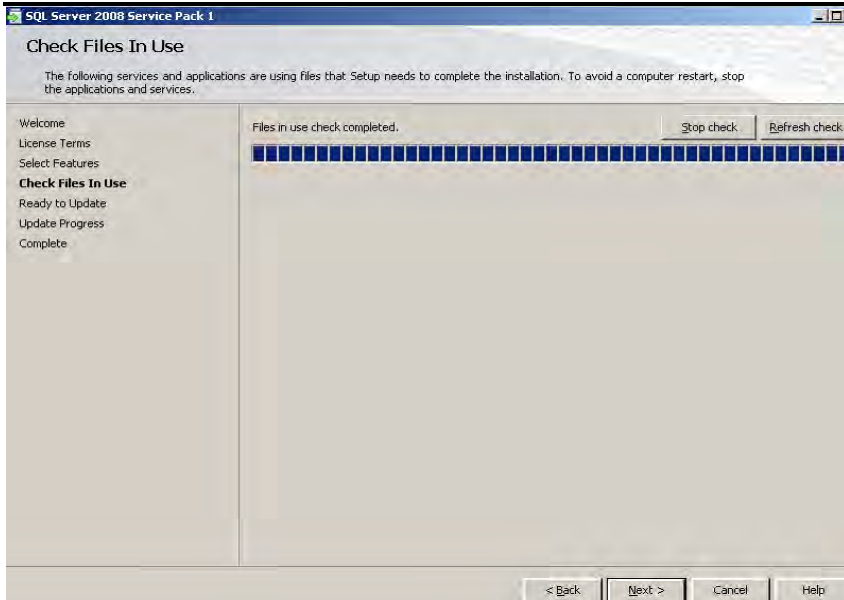
- 3 **License Terms-** Click  I accept the license terms. and click .



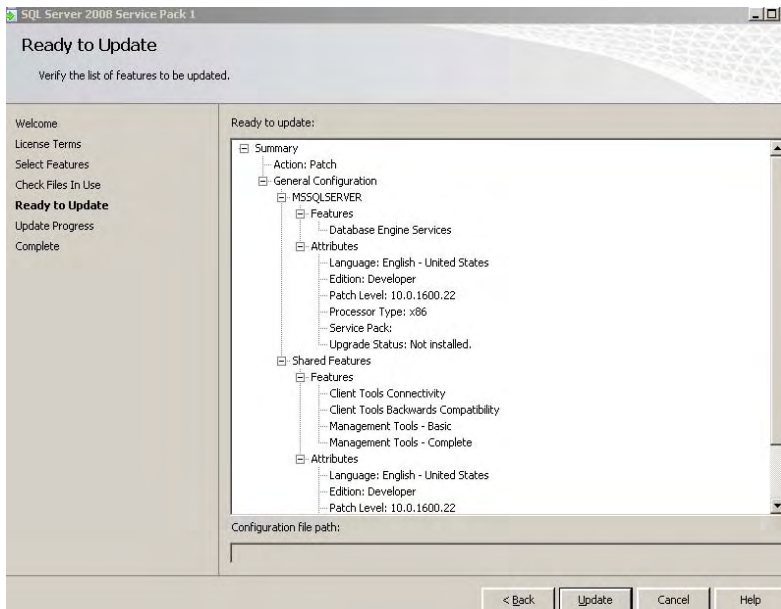
**4 Select Features- Click .**



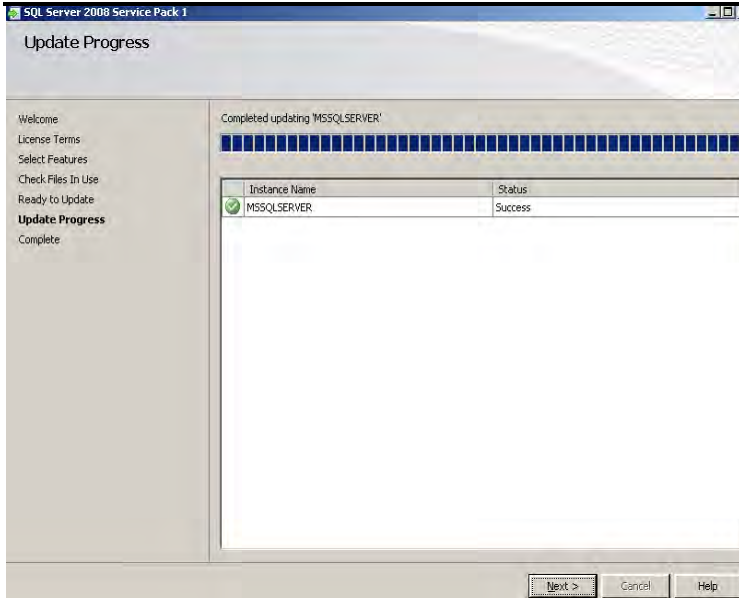
**5 Check Files In Use- Click .**



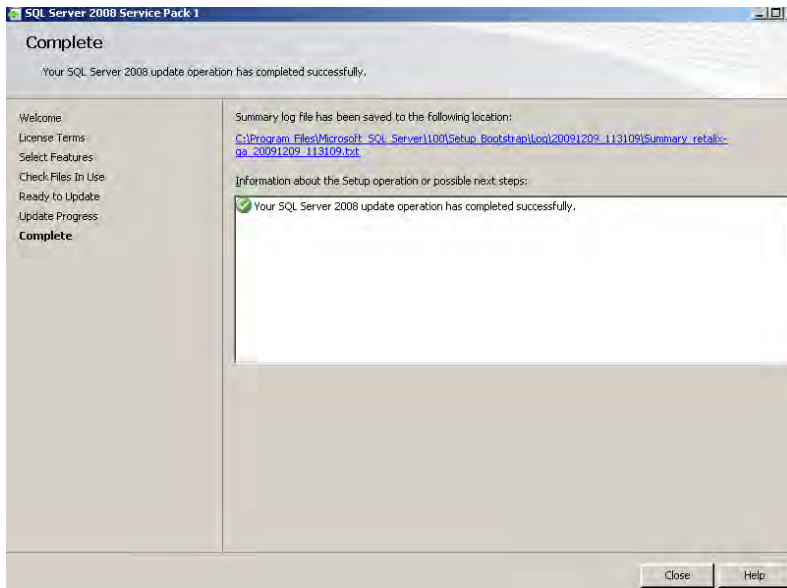
**6 Ready to Update-** click



**7 Update Progress-**  should indicate Success, click



8 **Complete-** Verify  click  . It is recommended that MFS1 is rebooted at this time.

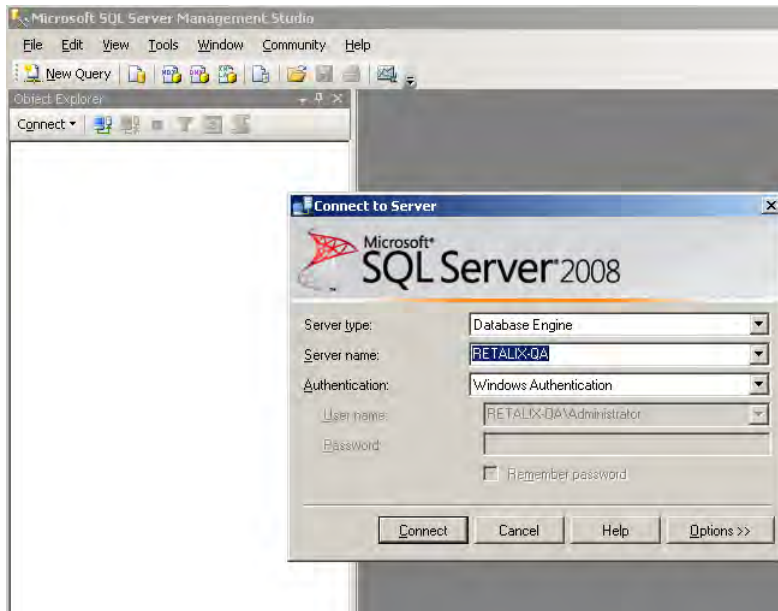


# Removing the “sa” Password

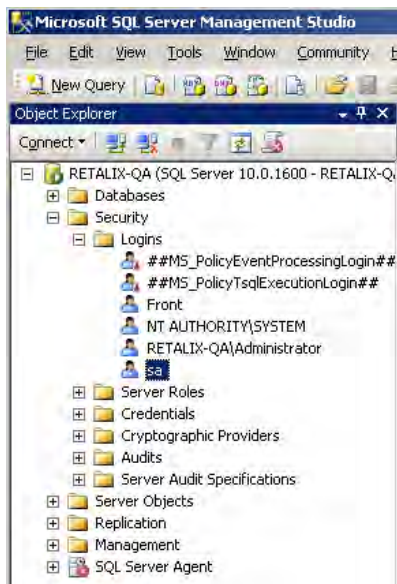
## Note:

During the SQL Server 2008 installation the “sa” password was established in order to complete the SQL installation. Follow these steps to remove that password so that ISS45 may be installed. Once ISS45 is installed the “sa” password may be set again.

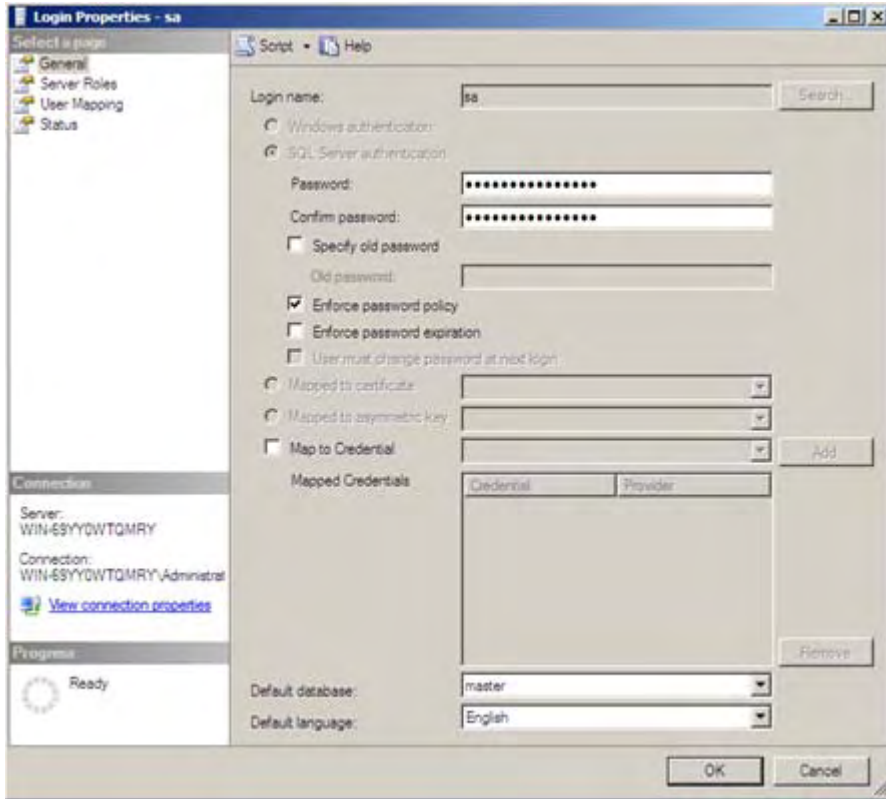
- 1 Open Microsoft SQL Server Management Studio. Click .



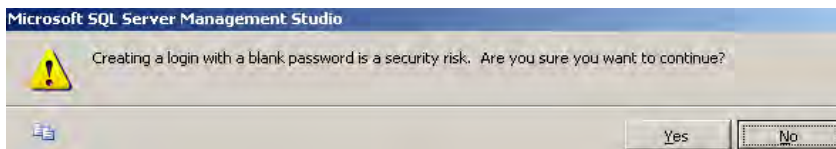
- 2 In **Object Explorer**, navigate to Security/Logins and double click on “sa”.



- 3 On the **Login Properties – sa** screen, blank out the password field  and the confirm password field . Also uncheck Enforce password policy  Enforce password policy. Then click **OK**.



- 4 After clicking **OK** in step 3, a new box will appear.

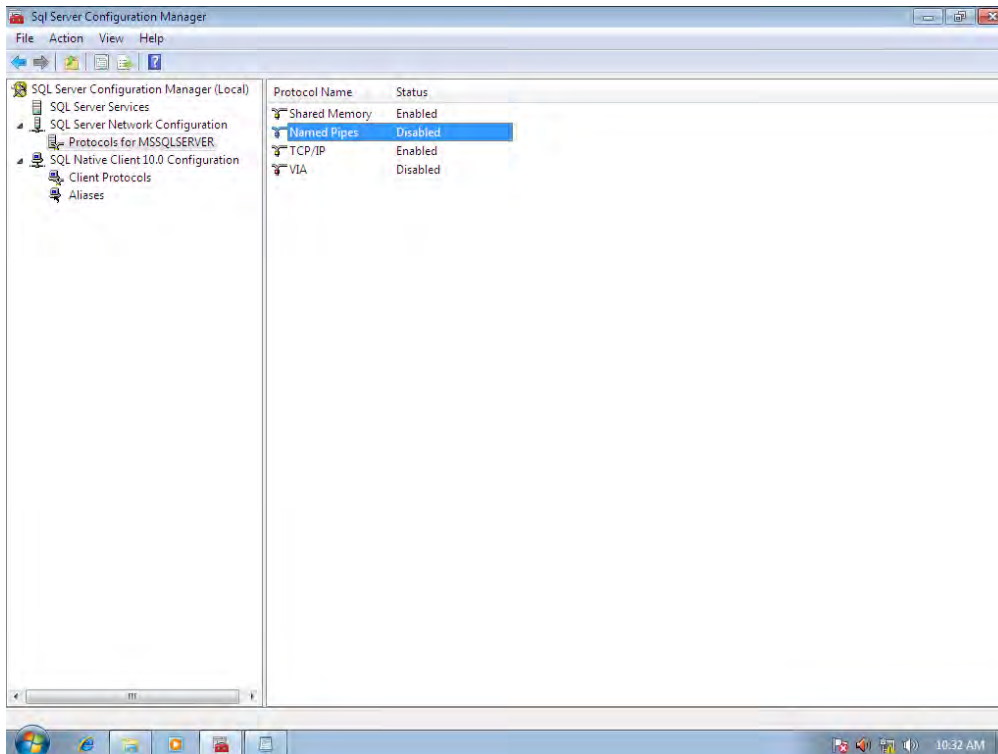


- 5 Click  to acknowledge the security risk message the close SQL Server Management. Reboot MFS1.

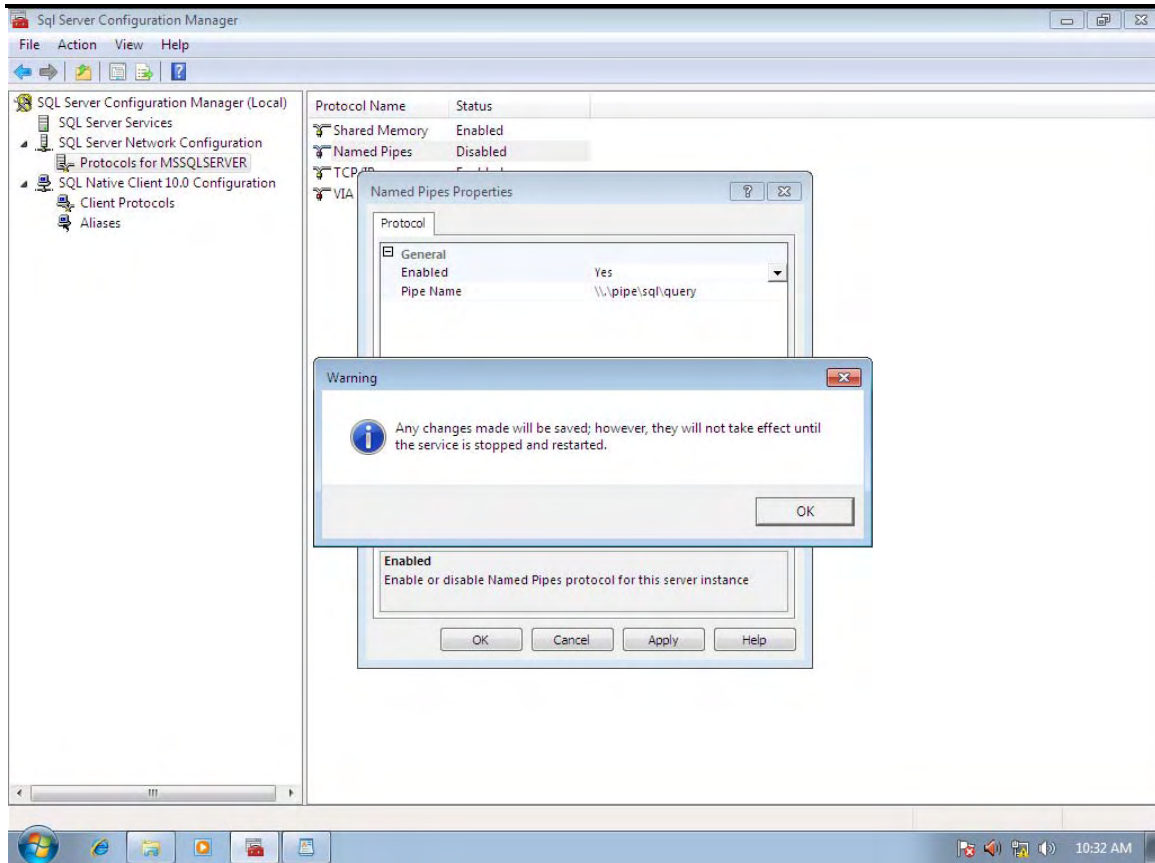
# Enable Named Pipes

To allow for backwards compatibility with a Windows XP MFS2 or LFS Workstation, a change must be made once the installation of SQL 2008 has been completed. In previous versions of SQL and Windows, StoreNext used Named Pipes as the communications protocol for connections to the Front Office database on MFS1. However, Named Pipes are disabled by default in SQL 2008

- 1 Click START-> ALL PROGRAMS->MICROSOFT SQL Server 2008-> Configuration Tools -> SQL Server Configuration Manager.
- 2 Open the **SQL Server Network Configuration** folder.
- 3 Click on **Protocols for MSSQLSERVER**.



- 4 Double-click on Named Pipes and change the Enabled value from NO to YES. Click on **Apply**. Click **OK** to acknowledge the warning that changes will not take effect until the service is stopped and restarted.



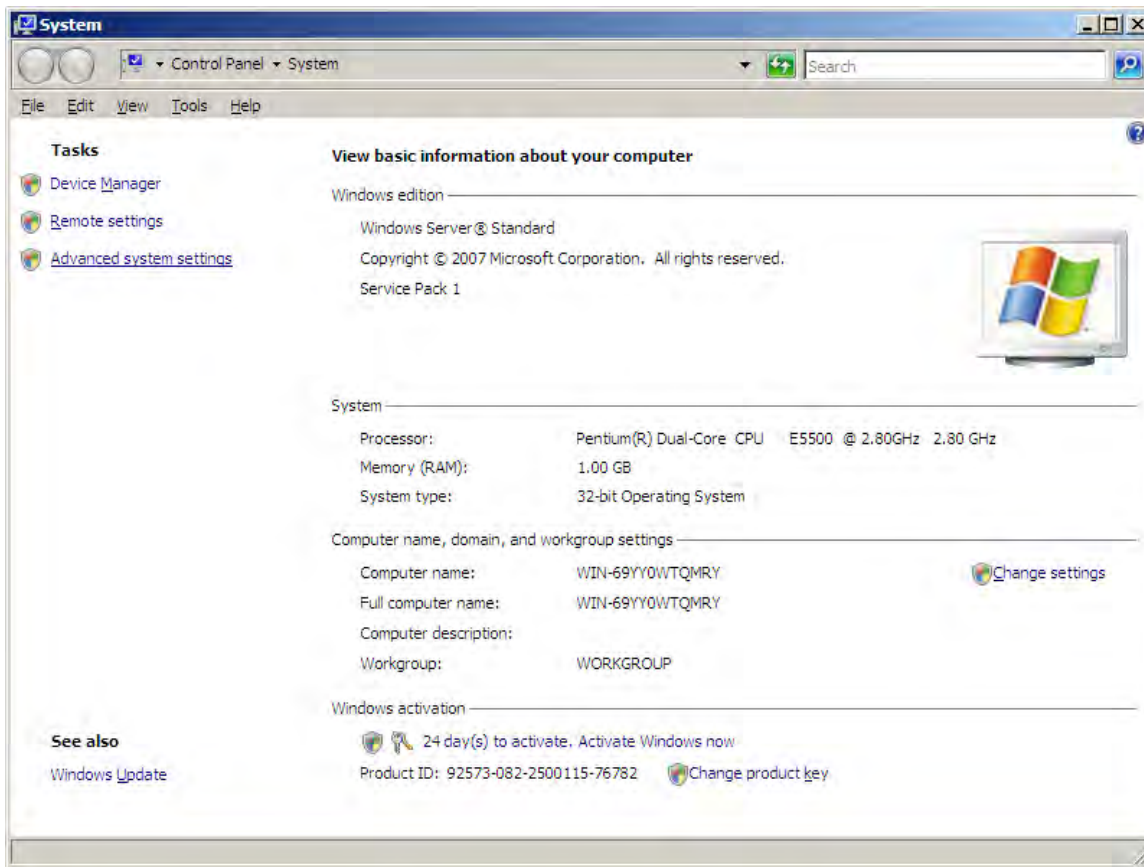
5 Click **OK**, close all open windows and reboot MFS1.

# Disable Data Execution Prevention (DEP)

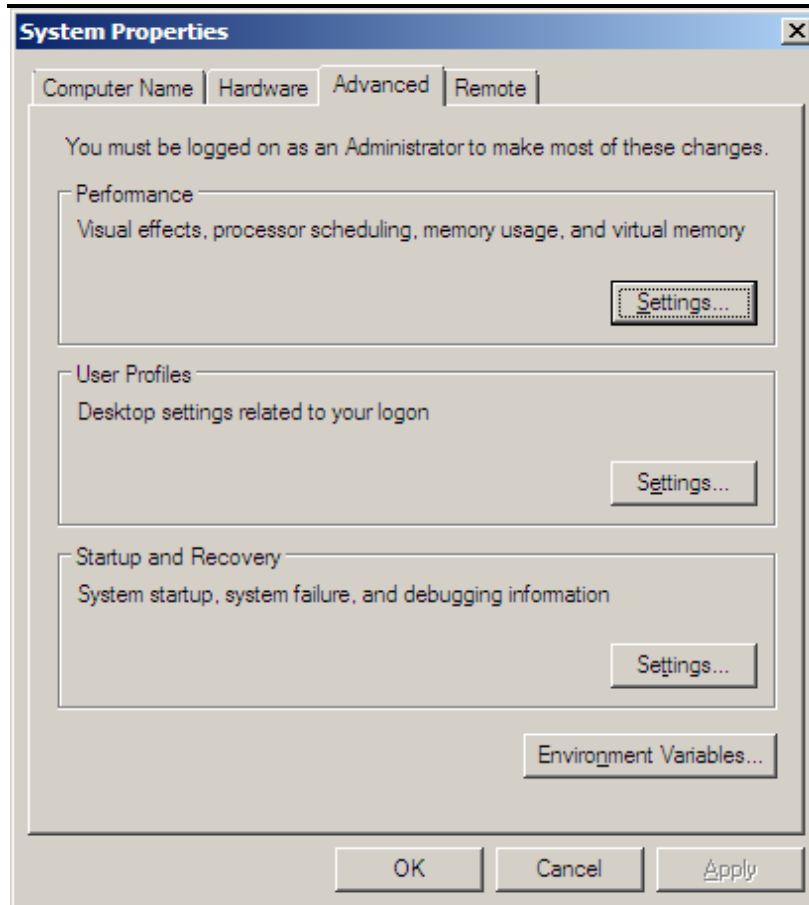
It is recommended that DEP be completely disabled on all StoreNext PC's.

DEP can be turned on for all applications, turned on for only certain applications or can be completely turned off.

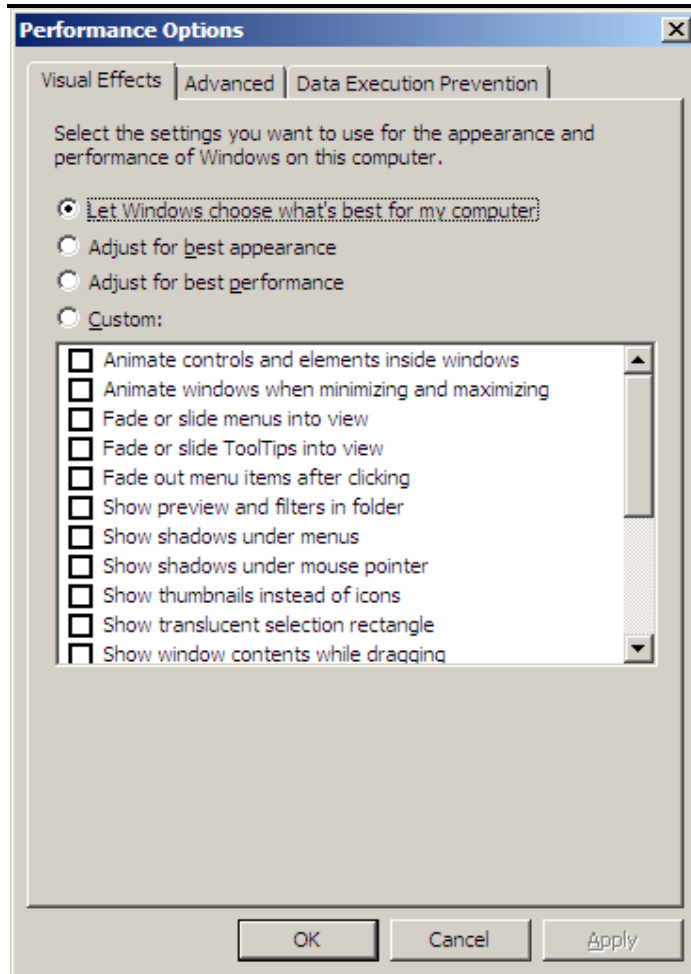
DEP settings can be changed through the GUI application but a command level script must be run to completely disable the application.



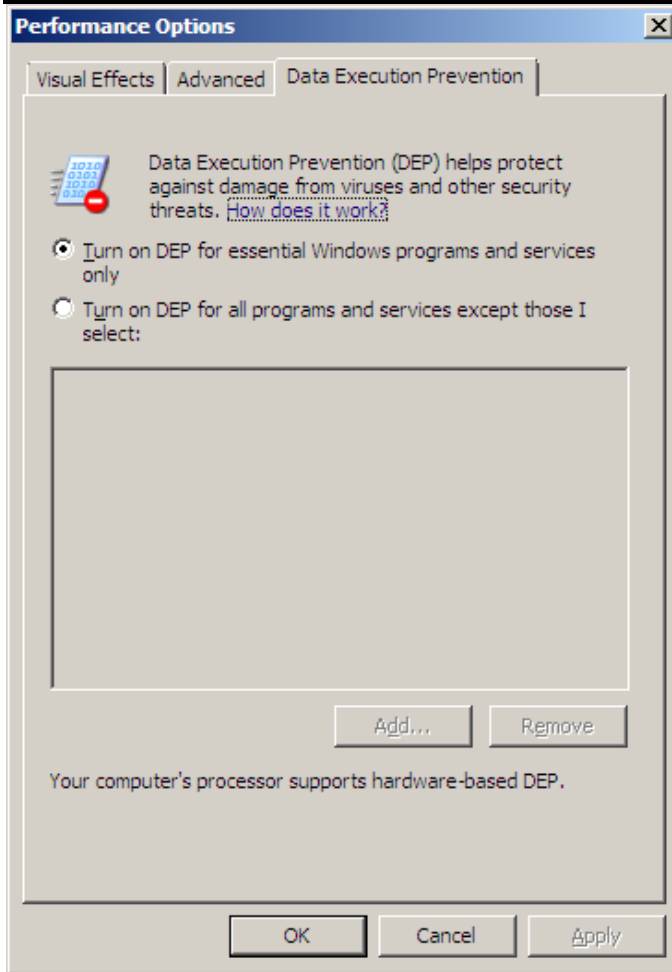
- 1 Check the current settings for DEP by opening the System application as shown below then click on Advanced system settings.



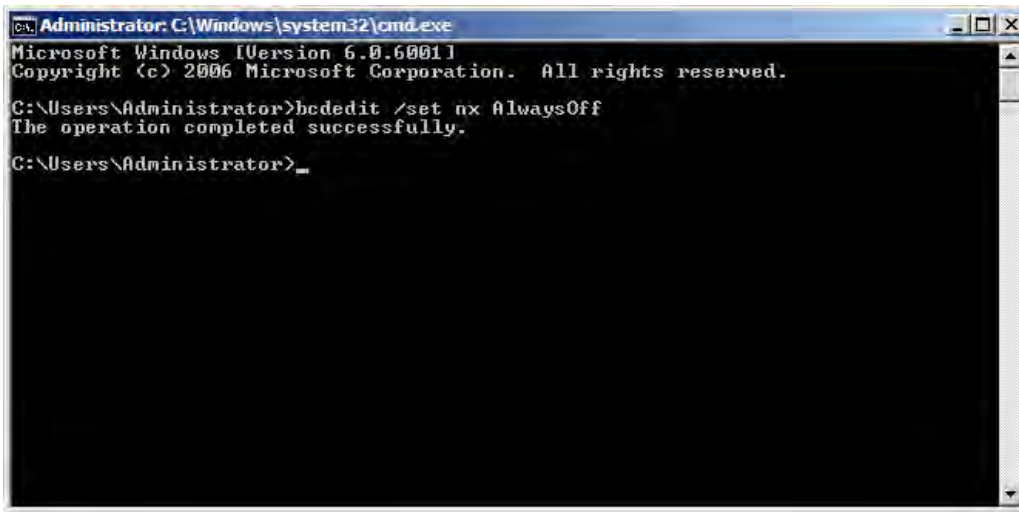
- 2 Click on the **Advanced** Tab followed by **Settings** in the Performance section.



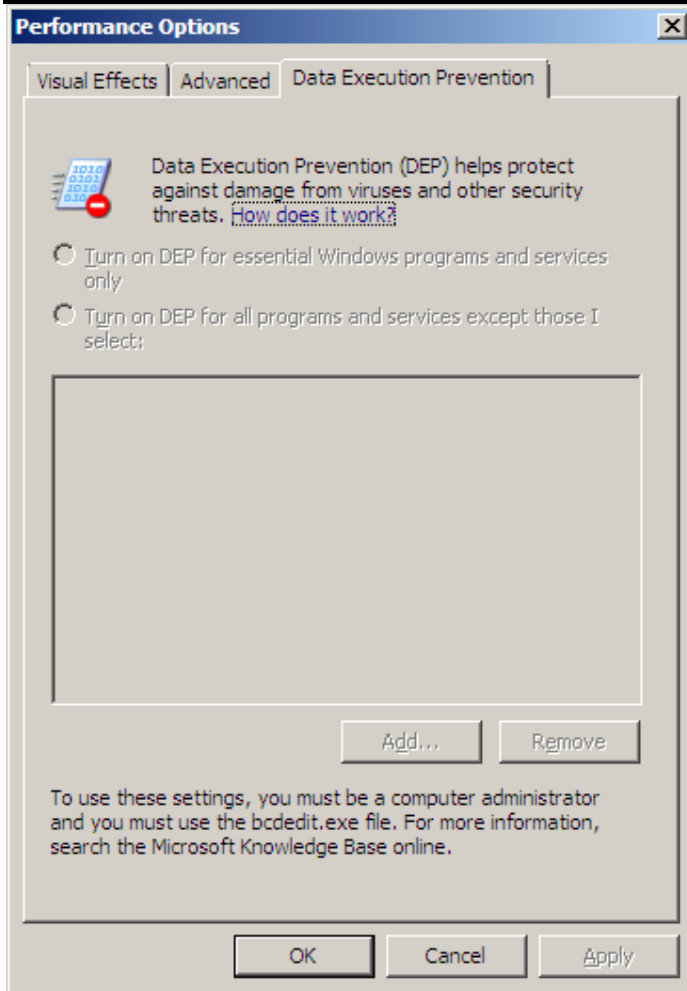
3 Click on the **Data Execution Prevention** Tab.



- 4 In the above example DEP is turned on for essential programs and services only.

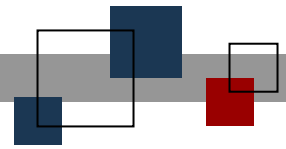


- 5 Open a Command Line window and enter **bcdedit /set nx AlwaysOff**.
- 6 Reboot the PC and then check the status of DEP.



- 7 Note both options are now grayed out above. This indicates that DEP is completely disabled for this machine.





**© StoreNext Retail Technologies LLC 2012**

StoreNext Retail Technologies LLC endeavors to ensure that the information in this document is correct and fairly stated but does not accept liability for any error or omission.

The development of StoreNext products and services is continuous and published information may not be up to date. It is important to check the current position with StoreNext. This document is not part of a contract or license save insofar as may be expressly agreed.