



*Release Notes & What's New*

*ISS45 8.1.6.0-090*



## ISS45 Release Notes and What's New

Date of Issue	Product ID Num.	Part Number	Brief Description
January 2005	45001/081	89000195	Initial Release
Other Releases: 89000233, 89000263, 89000263, 89000308, 89000308, 89000401, 89000417, 89000416, 89000480, 89000490, 89000508, 89000521, 89000532, 89000547, 89000573, 89000583, 89000587, 89000590			
February 2011	45001/081	89000613	8.1.5.2-050 Release
May 2011	45001/081	89000641	8.1.5.2-050 Release Revised
June 2011	45001/081	89000658	8.1.5.2-060 Release
October 2011	45001/081	89000683	8.1.5.4-050 Release
December 2011	45001/081	89000692	8.1.5.4-060 Release
December 2011	45001/081	89000693	8.1.5.4-070 Release
January 2012	45001/081	89000712	8.1.6.0-050 Release
February 2012	45001/081	89000720	8.1.6.0-060 Release
May 2012	45001/081	89000734	8.1.6.0-070 Release
July 2012	45001/081	89000737	8.1.5.4-090 Release
August 2012	45001/081	89000740	8.1.6.0-080 Release
November 2012	45001/081	89000747	8.1.6.0-090 Release

**©Copyright Retalix, Inc. 1995-2012  
All rights reserved**

This publication is protected by federal copyright law. This document and its contents are the proprietary, confidential information and property of Retalix, Inc. ("Retalix"). Unauthorized disclosure, reproduction, distribution or use of this document and/or its contents in any form is strictly prohibited. No part of this publication may be reproduced or transmitted into any human or computer language in any form or by any means, stored in a retrieval system, transmitted, redistributed, translated or disclosed to third parties, or de-compiled in any way including, but not limited to, photocopy, photograph, electronic, mechanical, magnetic or manual without the express written permission of Retalix or its licensors, if any. This document, notwithstanding the above, may be distributed in electronic or printed form to personnel who are employed by either (1) a Retalix customer of the subject system of this document or (2) personnel from an authorized Retalix Channel Partner of the subject system of this document. All copies, so distributed and/or so authorized, shall contain a full copy of this copyright notice.

Retalix has prepared this manual for use by users, authorized third parties and personnel of Retalix as a guide to the proper installation, operation, customization and/or maintenance of Retalix equipment and software. The drawings and specifications contained herein are the property of Retalix and/or its licensors.

Retalix endeavors to ensure that the information in this document is correct and fairly stated but does not accept liability for any error or omission. Retalix makes no representation or warranties with respect to the contents hereof, and specifically disclaims any implied warranties of merchantability or fitness for a particular purpose or non-infringement. No commitments by Retalix or its suppliers are made by or from this documentation which is provided for information only.

Development of Retalix products and documentation is continuous: Retalix reserves the right to revise this publication and to make changes from time to time in the contents hereof or in the products herein described or discussed without notice and without any obligation of Retalix to notify any person or organization of such revision or changes. Information published in this document will likely become obsolete over time and it is recommended that users regularly check for updates and newer versions.

The trademarks Retalix, StoreNext, ISS45, ScanMaster, R10, PocketOffice, RBO, Connected Payments, Connected Services, Connected Loyalty and all other Retalix product names are registered trademarks or trademarks of Retalix; all other trademarks or registered trademarks are the property of their respective owners. Third-party products, services, or company names referenced in this document may be trademarked or copyrighted by their respective owners, and are for identification purposes only. Copyrights, trademarks and license agreements shall be governed and construed in accordance with the laws of the State of Texas and the Federal Arbitration Act, and shall benefit Retalix, its successors, and assigns.

Address comments and corrections to:

Retalix, Inc.  
Software Program Director  
797 Commonwealth Drive  
Warrendale, PA 15086

# Table of Contents

<b>Table of Contents</b> .....	<b>i</b>
<b>Introduction</b> .....	<b>1</b>
329022 – Support for Check Digits Received from the Pump (FO/POS).....	2
Front Office .....	2
POS.....	2
328594 – IBM 67 Key Keyboard Support (POS).....	3
<b>Technical Reference Appendix</b> .....	<b>5</b>
Out of Scope .....	5

# Introduction

Enhancements were recently made to the Retalix ISS45 system. The changes are reflected in the accompanying ISS45 8.1.6.0-090 software. The Change Request Document (CRD) number assigned to the enhancement is listed in the description heading. Following the change description is an abbreviation (or combination thereof) of the ISS45 area affected:

(FO) – Front Office

(POS) – WinPOS

The enhancements are explained in detail in the following pages and are not included in the latest Office Users Guide, WinPOS User Guide or Office Administrator's Reference. If you have any questions regarding this release, please contact Retalix Support.

## 329022 – Support for Check Digits Received from the Pump (FO/POS)

Through a new General System Parameter, ISS45 now supports receiving a check digit in the member card number coming from the pump. In previous releases, WinPOS assumed that the member card number from the pump did not have a check digit and the POS added one for internal validation. This precluded some member cards (when swiped at the pump) from being added to the ticket for pay inside transactions.

### Front Office

#### New Parameters

As part of this feature new parameters have been established. The following General System Parameters are located in the Store \ POST \ Operational \ Member card \ Member Card \ Check digit folder.

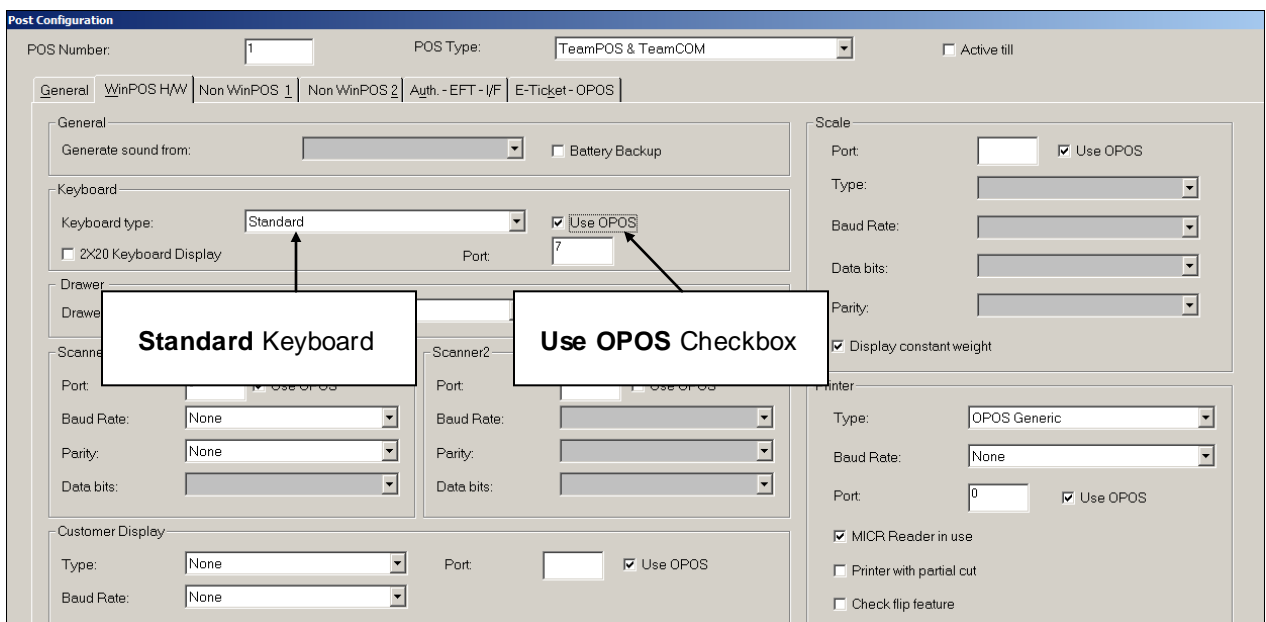
Parameter	Explanation
Member card number from pump includes check digit	This parameter provides the option of defining if the member card number accepted from fuel contains a check digit or not. (The default is "No").

### POS

The POS now accepts a member card number from fuel with or without a check digit. The POS will not add a check digit to the member card number accepted from fuel if the new General System Parameter "Member card number from pump includes check digit" is set to "Yes". If set to "No", the POS will add a check digit.

## 328594 – IBM 67 Key Keyboard Support (POS)

ISS45 now supports the IBM 67 Key Keyboard in this release. To configure the keyboard in POST Configuration, set the keyboard to “Standard” and check the “Use OPOS” checkbox on the WinPOS HW Tab.



On the E-Ticket-OPOS Tab, set the Keyboard Driver Name to “POSKybd” (the same driver as the 50-key keyboard).

**Post Configuration**

POS Number:  POS Type:   Active till

General | **WinPOS HW** | Non WinPOS 1 | Non WinPOS 2 | Auth. - EFT - I/F | E-Ticket - OPOS

E-Ticket

E-Ticket Active Virtual POS Number:  Virtual Cashier Number:

OPOS

OPOS Printer Driver Name:	<input type="text" value="POSPrinter"/>	
OPOS Line Display Driver Name:	<input type="text" value="LineDisplay"/>	
OPOS Drawer 1 Driver Name:	<input type="text" value="CDrawer"/>	
OPOS Drawer 2 Driver Name:	<input type="text"/>	
OPOS Scanner 1 Driver Name:	<input type="text"/>	
OPOS Scanner 2 Driver Name:	<input type="text"/>	
OPOS Scale Driver Name:	<input type="text"/>	
OPOS MICR Driver Name:	<input type="text" value="POSMICR"/>	<input checked="" type="checkbox"/> Use OPOS MICR
OPOS MSR Driver Name:	<input type="text"/>	<input type="checkbox"/> Use OPOS MSR
OPOS Keyboard Driver Name:	<input type="text" value="POSKybd"/>	
OPOS KeyLock Driver Name:	<input type="text" value="POSKeylock"/>	<input checked="" type="checkbox"/> Use OPOS KeyLock
OPOS Coin Dispenser Driver Name:	<input type="text"/>	<input type="checkbox"/> Use OPOS Coin Dispenser
OPOS Check Scanner Driver Name:	<input type="text"/>	<input type="checkbox"/> Use OPOS Check Scanner

**POSKybd Driver**

**Note:**

After the 8.1.6.0-090 upgrade, the retailer must copy the **KBDKMAP.DAT** file from the **\Program Files\POSWare\WinPOS** folder to the **\POS\DLL** folder on each POS Terminal using the IBM 67 Key Keyboard.

# Technical Reference Appendix

## Out of Scope

Limitations of the new features in this release are listed below (and were not addressed in development).

**Note:**

The limitations below are known as of this writing, and are provided in order to assist users and support personnel to plan, install and operate the capabilities described in this document. While Retalix endeavors to ensure that this information is correct and fairly stated, no attempt is made here to catalog all limitations that could be construed or that may become known in the course of use or experience.

FSD Number	Enhancement	Out of Scope
329022	Support for Check Digits Received from the Pump	Changes made to support Check Digits Received from Pump were made for the current release only (and will not be made to previous ISS45 releases).
328594	IBM 67 Key Keyboard Support	Changes made to support the IBM 67 Key Keyboard Support were made for the current release only (and will not be made to previous ISS45 releases).



# Retalix



© Retalix, Inc. 2012

Retalix, Inc. endeavors to ensure that the information in this document is correct and fairly stated but does not accept liability for any error or omission.

The development of Retalix products and services is continuous and published information may not be up to date. It is important to check the current position with Retalix. This document is not part of a contract or license, save insofar as may be expressly agreed.