



*Release Notes & What's New*

*ISS45 8.1.7.0-050*



**ISS45 Release Notes and What's New**

<b>Date of Issue</b>	<b>Product ID Num.</b>	<b>Part Number</b>	<b>Brief Description</b>
January 2005	45001/081	89000195	Initial Release
Other Releases: 89000233, 89000263, 89000263, 89000308, 89000308, 89000401, 89000417, 89000416, 89000480, 89000490, 89000508, 89000521, 89000532, 89000547, 89000573, 89000583, 89000587, 89000590, 89000613, 89000641, 89000658, 89000683			
December 2011	45001/081	89000692	8.1.5.4-060 Release
December 2011	45001/081	89000693	8.1.5.4-070 Release
January 2012	45001/081	89000712	8.1.6.0-050 Release
February 2012	45001/081	89000720	8.1.6.0-060 Release
May 2012	45001/081	89000734	8.1.6.0-070 Release
July 2012	45001/081	89000737	8.1.5.4-090 Release
August 2012	45001/081	89000740	8.1.6.0-080 Release
November 2012	45001/081	89000747	8.1.6.0-090 Release
December 2012	45001/081	89000748	8.1.5.4-100 Release
February 2013	45001/081	89000758	8.1.6.0-110 Release
May 2013	45001/081	89000767	8.1.6.0-130 Release
August 2013	45001/081	89000782	8.1.7.0 Release

**©Copyright Retalix, Inc. 1995-2013  
All rights reserved**

This publication is protected by federal copyright law. This document and its contents are the proprietary, confidential information and property of Retalix, Inc. ("Retalix"). Unauthorized disclosure, reproduction, distribution or use of this document and/or its contents in any form is strictly prohibited. No part of this publication may be reproduced or transmitted into any human or computer language in any form or by any means, stored in a retrieval system, transmitted, redistributed, translated or disclosed to third parties, or de-compiled in any way including, but not limited to, photocopy, photograph, electronic, mechanical, magnetic or manual without the express written permission of Retalix or its licensors, if any. This document, notwithstanding the above, may be distributed in electronic or printed form to personnel who are employed by either (1) a Retalix customer of the subject system of this document or (2) personnel from an authorized Retalix Channel Partner of the subject system of this document. All copies, so distributed and/or so authorized, shall contain a full copy of this copyright notice.

Retalix has prepared this manual for use by users, authorized third parties and personnel of Retalix as a guide to the proper installation, operation, customization and/or maintenance of Retalix equipment and software. The drawings and specifications contained herein are the property of Retalix and/or its licensors.

Retalix endeavors to ensure that the information in this document is correct and fairly stated but does not accept liability for any error or omission. Retalix makes no representation or warranties with respect to the contents hereof, and specifically disclaims any implied warranties of merchantability or fitness for a particular purpose or non-infringement. No commitments by Retalix or its suppliers are made by or from this documentation which is provided for information only.

Development of Retalix products and documentation is continuous: Retalix reserves the right to revise this publication and to make changes from time to time in the contents hereof or in the products herein described or discussed without notice and without any obligation of Retalix to notify any person or organization of such revision or changes. Information published in this document will likely become obsolete over time and it is recommended that users regularly check for updates and newer versions.

The trademarks Retalix, StoreNext, ISS45, ScanMaster, R10, PocketOffice, RBO, Connected Payments, Connected Services, Connected Loyalty and all other Retalix product names are registered trademarks or trademarks of Retalix; all other trademarks or registered trademarks are the property of their respective owners. Third-party products, services, or company names referenced in this document may be trademarked or copyrighted by their respective owners, and are for identification purposes only. Copyrights, trademarks and license agreements shall be governed and construed in accordance with the laws of the State of Texas and the Federal Arbitration Act, and shall benefit Retalix, its successors, and assigns.

Address comments and corrections to:

Retalix, Inc.  
Software Program Director  
797 Commonwealth Drive  
Warrendale, PA 15086

# Table of Contents

<b>Table of Contents</b> .....	<b>i</b>
<b>Introduction</b> .....	<b>1</b>
273302 – Smart Card WIC PIN Pad Messaging (POS) .....	2
282761 – Retailix Global Payments Interface Changes (POS).....	3
284901 – Round-Up Feature (FO/POS) .....	5
Front Office .....	5
POS .....	6
287118 – New M-DOT Provider Log Handling (Sys) .....	8
292762 – Epson TM-H2000 Printer Support (FO/POS).....	9
Front Office .....	9
POS .....	10
301533 – eWIC Balance Inquiry Receipt Printing for No Benefits (POS).....	11
315030 – Fuel Purchase Limits for Cents Off Vouchers (Fuel).....	12
316022 – Fujitsu U-SCAN Self-Checkout Support for DRE (POS) .....	13
322087 – Fleet Card Differentiation for Zip Code Prompting (Fuel) .....	14
329016 – Support for Member Cards with Check Digits from Fuel (FO/POS)..	17
Front Office .....	17
POS .....	17
350987 – West Virginia Online WIC EBT (FO/POS).....	18
Front Office .....	18
POS .....	18
352054 – ActiveX Promotion Delete Support (POS).....	19
357441 – FTP Communication and APL Processing Support through Batch Files (Sys) .....	20
<b>Other Enhancements</b> .....	<b>21</b>
<b>Technical Reference Appendix</b> .....	<b>22</b>
New Certifications .....	22
New TLOG Transactions.....	22
Out of Scope .....	24
Dependencies .....	26

# Introduction

Enhancements were recently made to the Retalix ISS45 system. The changes are reflected in the accompanying ISS45 8.1.7.0-050 software. The Change Request Document (CRD) number assigned to each enhancement is listed in the description heading.

The Change Request Document (CRD) number assigned to each enhancement is listed in the description heading. Following the change description is an abbreviation (or combination thereof) of the ISS45 area affected:

(FO) – Front Office

(POS) – WinPOS

(Fuel) – ISS45 Fuel

(Sys) – System / Services

These enhancements are explained in detail in the following pages and are not included in the latest Office Users Guide, WinPOS User Guide or Office Administrator's Reference. If you have any questions regarding this release, please contact Retalix Support.

## **273302 – Smart Card WIC PIN Pad Messaging (POS)**

The "No Current WIC" message now displays on Smart Card WIC acceptor devices for situations when a tendered card either has no prescription information (i.e. there is no food benefit period on the card that matches the date the card is presented) or when a card has all current benefits exhausted for the month. Retalix Global Payments delivers this message with Completion Code "04" (the completion code the ISS45 application currently calls for both of these instances)

## 282761 – Retailix Global Payments Interface Changes (POS)

Changes to the Retailix Global Interface with WinPOS are included in this release to support the MasterCard mandate to include customer account balances on customer receipts for transactions tendered using MasterCard branded debit cards.

The WPEFT.DLL now supports the following two new interface calls to OpenEPS:

- MTX\_POS\_GET\_AccountBalanceAvailable
- MTX\_POS\_GET\_AccountBalance

For all non-EBT and non-Check EFT tenders, the new interface:

- Checks to see if an available balance is available for the EFT tender (by calling MTX\_POS\_GET\_AccountBalanceAvailable).
- If a balance is available, gets the available balance (by calling MTX\_POS\_GET\_AccountBalance) and sets a flag to indicate that the balance should be printed on the receipt.
- If a balance is not available, sets a flag to not print the balance on the receipt.
- For soft declines (indicating a balance on the card but an insufficient amount to tender the transaction), calls MTX\_POS\_GET\_AccountBalance to obtain the available balance prior to asking the customer if they want to resubmit.

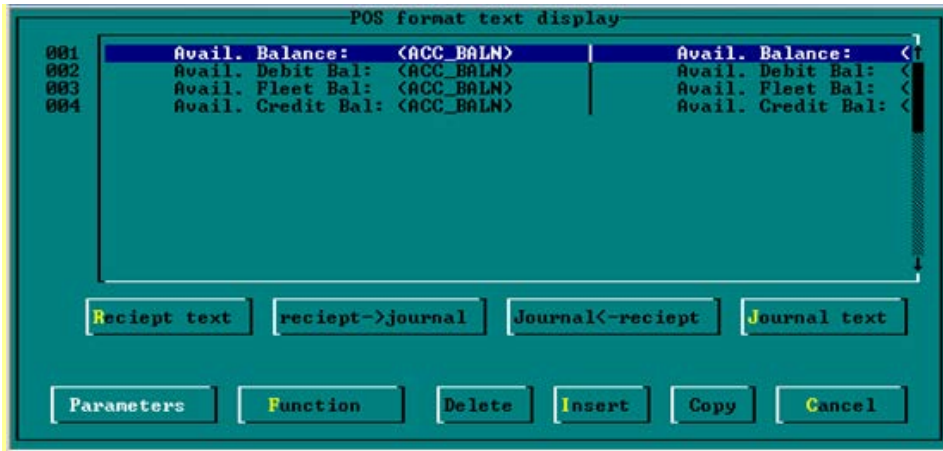
### Notes:

Applicable tenders should be configured in OpenEPS to return the available balance when available. No changes should be made to existing EBT Food Stamp and EBT Cash tenders.

The POS supports printing the new account balance field on multi-part receipts and in the tender portion of the customer receipt. If an account balance is not available, the balance is not printed and the line is skipped. If the retailer configures another field on the same line as the available balance field and the balance is not available, the entire receipt line is skipped.

### Note:

The <ACC\_BALNCE> field must be added to those templates used for MasterCard debit tenders in Tender Maintenance.



If the account balance is available (even if balance is \$0.00), the balance still prints to receipt.

### New TLOG Transactions

Two TLOG transactions have been added in this release for account balance information. Please see page 22 for more information.

## 284901 – Round-Up Feature (FO/POS)

A new feature in this release provides the retailer a mechanism to collect donation change from customer after totaling the ticket. When enabled, the customer will be prompted to donate an amount that rounds the sale total to the next whole dollar amount. Donations are treated as a department sale and are included on ISS45 department reports.

### Front Office

#### New Parameters

As part of this feature new parameters have been established. The following General System Parameters are located in the Store \ POST \ General folder.

Parameter	Explanation
Enable Prompt for Round-Up of Ticket Total	This parameter enables the POS to prompt the customer if they wish to round up their ticket total to the next highest whole-dollar amount for donation purposes.
Specify Round-Up Department	This parameter designates a department as the system "Round-Up" Department that is used to track ticket round-up total.
Specify Template to Print when Round-Up is Sold	This parameter designates a receipt template that prints at the end of the receipt when a round-up is applied to a ticket.
Specify Line 1 of Prompt for Round-Up	This parameter specifies line 1 of the text that is presented to the customer (on the PIN Pad) and on the cashier display when prompting for ticket round-up.

Parameter	Explanation
Specify Line 2 of Prompt for Round-Up	This parameter specifies line 2 of the text that is presented to the customer and on the cashier display when prompting for ticket round-up.

**Note:**

The round up department is reported in the TLOG and displays in the Electronic Journal like any other department.

**Note:**

This development does not affect ISS45 promotions. The Department option flags "Exclude from Min Purchase" and "Exclude from Promotions" are implicitly applied when amounts are sold to the round-up department at the POS.

## POS

When the new General System Parameter "Enable Prompt for Round-Up of Ticket Total" is set to "Yes", the text defined in the new "Specify Line 1 of Prompt for Round-Up" and "Specify Line 2 of Prompt for Round-Up" parameters display on the Cashier Display and PIN Pad when the cashier totals the ticket (after any total-time discounts/promotions have been executed). The round-up amount is calculated as the difference between the final total amount and the next highest full-dollar amount.

If "Yes" is selected (by either the cashier or customer) and the round-up has been applied, the round-up prompt will not display again within the ticket. And once a tender has been accepted, the prompt will not display again within the ticket.

**Note:**

If the cashier presses Total and "No" is selected (by either the customer or cashier) and Sale Mode is re-entered without any tendering taking place, the Round-Up Prompt will appear at the next Ticket Total.

**Note:**

To cancel a round-up after it has been applied or to manually enter/adjust a round-up amount, the cashier must manually sell or return an amount to the round-up department.

**Note:**

The Round-Up Prompt may not appear on certain PIN Pads.

If the "Specify Template to Print when Round-Up is Sold" parameter is defined, the POS will print the template on the receipt displaying the donation amount. For example, "Thank you for donating \$.49 to the XYZ Foundation". The round-up amount is sold to \ tracked by the department defined by the new "Specify Round-Up Department" parameter.

**Note:**

If the sale total is a whole-dollar amount, no donation prompt is displayed.

**Note:**

The cashier (or terminal) will be accountable for the additional tender collected using this feature. For example, assume a transaction for \$2.59 rounds up to \$3.00 and the customer pays with cash. The cashier (or terminal) will be accountable for \$3.00 in cash. Department Sales Report will show \$.41 in sales for the designated Round-Up Department.

**Note:**

The Round Up option is not available for WIC or WIC CVV transactions.

**Note:**

This feature is not available on self-checkout terminals.

## New TLOG Transaction

A new Opcode 70, Function 90 information transaction has been created to log data associated with round-up transactions at the POS. (See page 22).

## 287118 – New M-DOT Provider Log Handling (Sys)

The MDotProvider.log file is now archived and cleared in this release. In previous releases, unrestricted MDotProvider.log growth was causing problems in sites using the M-Dot Digital Coupon Interface.

**Note:**

All MDotProvider.DLL and RSM Dispatcher activity are logged to the MDotProvider.log file (in the \PCMASTER\LOG folder).

**Note:**

Archived files are zipped and placed in the \PCMASTER\HISTORY folder. Zip files are deleted after the number of days set in the following General System Parameter: Store \ Front Office \ End of Day \ Archive \ Number of history days for EJ.

## **292762 – Epson TM-H2000 Printer Support (FO/POS)**

ISS45 now supports the Epson TM-H2000 printer for the following POS functions:

- Receipt Printing
- Document Printing (Endorsement Only)
- MICR Reading
- Check Voiding (using the Franking Cartridge)

### **Front Office**

#### **New Printer Type in Post Configuration**

The “Epson H2000” now appears as a Printer Type selection on the Post Configuration Screen’s WinPOS H/W Tab.

The screenshot shows the 'Post Configuration' window for a POS system. At the top, 'POS Number' is 1 and 'POS Type' is 'TeamPOS & TeamCOM'. The 'Printer' section is expanded, showing a list of printer models. A callout box labeled 'New Epson H200 Printer selection' points to 'EPSON H2000' in the list. Other printer models visible include AXIHOM A758, IBM 4610, EPSON H6000, FUJITSU FD21, EPSON TM88, OPOS Generic, and EPSON H5000. The printer settings are currently set to 'None'.

## POS

When the Epson H2000 Printer is configured for the POS, the POS presents the correct instructions to the cashier (e.g. “Insert Check Face Up/Down”, etc.) and ensures events (i.e. MICR read, template printing, and endorsement) occur in the proper sequence when tendering a check.

### Note:

This printer does not perform face template printing because it lacks the ability to rotate text by 90 degrees. In the event of an ECC void, the printer will always print “Electronically Presented” if the special franking cartridge is installed in the printer.

## **301533 – eWIC Balance Inquiry Receipt Printing for No Benefits (POS)**

A customer receipt is now generated with the printed "No Current WIC" text when the Balance Inquiry (Keyboard Function 842) returns no available prescription benefits for the customer. (The message also appears on the Cashier Display).

## 315030 – Fuel Purchase Limits for Cents Off Vouchers (Fuel)

ISS45 now has the ability to limit the number of gallons purchased with a cents-off-per-gallon fuel voucher for both pay-at-pump and pre-pay transactions. As for pay-at-kiosk transactions, the POS can now issue a ticket-level discount using the lesser of the volume pumped or the maximum volume limit for the voucher.

In previous releases, there was no limit to the number of gallons that could be dispensed at a reduced price when a cents-off-per-gallon fuel voucher was used (making fuel limits specified on the voucher unenforceable).

**Note:**

An Allied Controller (ANDI / NextGen) must be in use for this feature to be utilized. If the registry setting "LimitsHandlingByCL" is set to "0", Allied calculates the value and volume limits for pay-at-pump and pre-pay transactions. If set to "1", Retalix performs the calculation to apply the lowest value limitation to the pump. If set to "2", Retalix performs the calculation to apply the lowest volume limitation to the pump

**Note:**

The Maximum Weight field in the Enhanced Promotion Screen's Setting Tab will continue to be used as the threshold for the maximum number of gallons that can be pumped using a cents-off fuel voucher. (Continue to set the Group Type to "Weighted/Decimal" and the Reward Type to "Amount of per Pound")

## 316022 – Fujitsu U-SCAN Self-Checkout Support for DRE (POS)

In sites using Retailx Loyalty, the ISS45 Dynamic Receipt Engine (DRE) is now supported on Fujitsu U-SCAN Self-Checkout Terminals. This feature allows target messages (barcodes, vouchers, images) to be printed at Self-Checkout Terminals.

**Note:**

At the end of a self-checkout terminal ticket, a new POS\_DYNAMIC\_RECEIPT\_XML\_FILE message (Op Code 366) is sent to the printer (along with the file name of the XML). The Self-Checkout Terminal parses the XML message for printing (which is control by the U-SCAN printer).

## **322087 – Fleet Card Differentiation for Zip Code Prompting (Fuel)**

In previous releases, Pay-at-Pump transactions could not differentiate between Fleet and Credit card types in regards to prompting for a Zip Code. If prompting for Zip Code was enabled for Credit, both Fleet and Credit purchases prompted for a Zip Code.

In this release, when Zip Code prompting is enabled for Credit Cards only, there is no Zip Code prompting for Fleet Cards.

## 328598 – IBM 67 Key Keyboard Support (POS)

ISS45 now supports the IBM 67 Key Keyboard. To configure the keyboard in POST Configuration, set the keyboard to “Standard” and check the “Use OPOS” checkbox on the WinPOS H/W Tab.

The screenshot displays the 'Post Configuration' window with the 'WinPOS H/W' tab selected. The 'Keyboard' section is highlighted, showing the 'Keyboard type' dropdown set to 'Standard' and the 'Use OPOS' checkbox checked. Two callout boxes with arrows point to these settings: 'Standard Keyboard' points to the dropdown, and 'Use OPOS Checkbox' points to the checked checkbox. Other sections visible include 'General', 'Scale', 'Scanner', 'Printer', and 'Customer Display', each with various configuration options like 'Port', 'Baud Rate', 'Parity', and 'Data bits'.

On the E-Ticket-OPOS Tab, set the Keyboard Driver Name to “POSKybd” (the same driver as the 50-key keyboard).

**Post Configuration**

POS Number:  POS Type:   Active till

General | WinPOS HW | Non WinPOS 1 | Non WinPOS 2 | Auth. - EFT - I/F | E-Ticket - OPOS

E-Ticket

E-Ticket Active Virtual POS Number:  Virtual Cashier Number:

OPOS

OPOS Printer Driver Name:	<input type="text" value="POSPrinter"/>	
OPOS Line Display Driver Name:	<input type="text" value="LineDisplay"/>	
OPOS Drawer 1 Driver Name:	<input type="text" value="CDrawer"/>	
OPOS Drawer 2 Driver Name:	<input type="text"/>	
OPOS Scanner 1 Driver Name:	<input type="text"/>	
OPOS Scanner 2 Driver Name:	<input type="text"/>	
OPOS Scale Driver Name:	<input type="text"/>	
OPOS MICR Driver Name:	<input type="text" value="POSMICR"/>	<input checked="" type="checkbox"/> Use OPOS MICR
OPOS MSR Driver Name:	<input type="text"/>	<input type="checkbox"/> Use OPOS MSR
OPOS Keyboard Driver Name:	<input type="text" value="POSKybd"/>	
OPOS KeyLock Driver Name:	<input type="text" value="POSKeylock"/>	<input checked="" type="checkbox"/> Use OPOS KeyLock
OPOS Coin Dispenser Driver Name:	<input type="text"/>	<input type="checkbox"/> Use OPOS Coin Dispenser
OPOS Check Scanner Driver Name:	<input type="text"/>	<input type="checkbox"/> Use OPOS Check Scanner

**POSKybd Driver**

**Note:**

After the 8.1.7.0-050 upgrade, the retailer must copy the **KBDKMAP.DAT** file from the **\\Program Files\\POSWare\\WinPOS** folder to the **\\POS\\DLL** folder on each POS Terminal using the IBM 67 Key Keyboard.

## 329016 – Support for Member Cards with Check Digits from Fuel (FO/POS)

A new parameter in this release allows the retailer to define if a member card coming from the pump contains a check digit or not. In previous releases, WinPOS assumed the member card did not contain a member card and added one for internal validation. This prevented member cards with check digits to be swiped for Pay-at-Pump and Pay-at-Kiosk transactions.

### Front Office

#### New Parameters

As part of this feature new parameters have been established. The following General System Parameters are located in the Store \ POST \ Operational \ Member card \ Member Card \ Check digit folder.

Parameter	Explanation
Member card number from pump includes check digit	This parameter provides the option of defining if the member card number accepted from fuel contains a check digit or not. (The default is "No").

### POS

WinPOS will not add a check digit to the member card number accepted from fuel if the new General System Parameter "Member card number from pump includes check digit" is set to "Yes".

## **350987 – West Virginia Online WIC EBT (FO/POS)**

ISS45 now supports Online WIC EBT (a.k.a. “eWIC”) for the state of West Virginia (pending store certification).

### **Front Office**

The state code for West Virginia may now be configured in the Front Office. The APL file is processed using the state code “WV”.

### **POS**

When the West Virginia state code is configured for Online WIC EBT in the Front Office, the POS uses the same operating rules as the state of Kentucky when tendering Online WIC EBT.

## 352054 – ActiveX Promotion Delete Support (POS)

ActiveX functions have been added in this release so host third-party applications can be used to delete ISS45 legacy promotions.

**Note:**

The modified files in this release are:

- V8G\_Promotion.dll
- PromotionHeaderD.frm
- CProm10.cls
- CPromHDR.cls

## **357441 – FTP Communication and APL Processing Support through Batch Files (Sys)**

ISS45 now supports FTP communication and APL processing through the modified SQLhuk.bat and WICCOMM.BAT files installed in this release.

## Other Enhancements

- 297299 – The upgrade to 8.1.7.0-050 removes the SWVerify.dll file from unneeded locations to help ensure APL files processes without issue.
- 305030 – ISS45 can now implement volume limits for gallons purchased with a cents-off-per-gallon fuel voucher (as specified in the redemption ISS45 Enhanced Promotion) for Pay-at-Pump and Pre Pay transactions. For Pay-at-Kiosk transactions, the POS can now issue a ticket level discount for cents-off-per-gallon fuel vouchers for the lesser of the volume pumped or the voucher volume limit. In previous releases, there was no limit to the number of gallons that can be dispensed at a reduced price when using a cents-off-per-gallon fuel voucher (even though configured to do so in the ISS45 Enhanced Promotion). This made the fuel limit specified on the voucher unenforceable and gave unwarranted rewards to the customer.
- 312661 – Catalina Interface processing and logging logic has been changed to only strip the check digit if the account number is 12-digits. If the account number is 11-digits, the last digit in the account number is not stripped.
- 318832 – The HASP check no longer validates the both the V8 option and the Enhanced Promotion option.
- 337151 – Retailix Loyalty is enabled at the POS through HASP key position 27.

# Technical Reference Appendix

## New Certifications

- The following fuel components have been tested and certified for ISS45 8.1.7.0-050:
  - PumpSrv 10.23.1872
  - POSPump 10.23.800
  - FCC 10.23.1841
- CR 323054 – The following Retailx Loyalty components have been tested and certified for ISS45 8.1.7.0-050.
  - LPE Version 10.1.116
  - DRE Version 1.2.0.360

## New TLOG Transactions

The layout of the new Media Extension 7 (0xC6) is as follows:

Bytes	From	To	Data	Bits	Explanation	Remarks
1	0	1	Opcode		0xC6	
1	1	2	Flag	bit 0	Account Balance Available	EFT Acct Balance provided?
				bit 1	Media Extension 8 Used (for future development)	
				bit 2	Not Used	
				bit 3	Not Used	
				bit 4	Not Used	
				bit 5	Not Used	
				bit 6	Not Used	
				bit 7	Not Used	
4	2	6	Account Balance			Holds the account balance if available
38	6	44	Not Used			
20	44	64	Tail			
<b>64</b>			<b>Total</b>			

The layout of the new Round-Up Information Transaction (0x70 0x90) is as follows:

Bytes	From	To	Data	Bits	Explanation	Remarks
1	0	1	Opcode		70 – Log Information	
1	1	2	Function		0 x 90 TRANS_INFO2_ROUND_UP	
4	2	6	Amount		Round-Up Amount	
10	6	16	Template		Receipt Template for Round-Up	
28	16	44	Not Used			
20	44	64	Tail			
<b>64</b>			<b>Total</b>			

## Out of Scope

Limitations of new features in this release are listed below (and were not addressed in development).

**Note:**

The limitations below are known as of this writing, and are provided in order to assist users and support personnel to plan, install and operate the capabilities described in this document. While Retailx endeavors to ensure that this information is correct and fairly stated, no attempt is made here to catalog all limitations that could be construed or that may become known in the course of use or experience.

FSD Number	Enhancement	Out of Scope
284901	Round-Up Feature	Using the Round-Up Feature on for WIC or WIC CVV transactions is Out of Scope.  Using the Round-Up Feature on self-checkout terminals is Out of Scope.
301533	eWIC Balance Inquiry Receipt Printing for No Benefits	The eWIC Balance Inquiry Receipt Printing for No Benefits feature is available for the current release only (and will not be made compatible with previous ISS45 releases).
315030	Fuel Purchase Limits for Cents Off Vouchers	The Fuel Purchase Limits for Cents Off Vouchers feature is available for the current release only (and will not be made compatible with previous ISS45 releases).

<b>FSD Number</b>	<b>Enhancement</b>	<b>Out of Scope</b>
322087	Fleet Card Differentiation for Zip Code Prompting	The Fleet Card Differentiation for Zip Code Prompting modification is available for the current release only (and will not be made compatible with previous ISS45 releases).

## Dependencies

Dependencies to utilize new features in this release are listed below.

FSD Number	Enhancement	Dependencies
282761	Retailx Global Payments Interface Changes	<ol style="list-style-type: none"> <li>1. The &lt;ACC_BALNCE&gt; field must be added to those templates used for MasterCard debit tenders in Tender Maintenance.</li> </ol>
247948	Round-Up Feature	<ol style="list-style-type: none"> <li>1. The General System Parameter "Enable Ticket Round-Up" must be set to "Yes".</li> <li>2. The General System Parameter "Round-Up Department" must be set to a designated department.</li> </ol>
292762	Epson TM-H2000 Printer Support	<ol style="list-style-type: none"> <li>1. The Printer Type must be set to "Epson H2000" for POS terminals in POST Configuration.</li> </ol>
315030	Fuel Purchase Limits for Cents Off Vouchers	<ol style="list-style-type: none"> <li>1. An Allied Controller (ANDI / NextGen) must be in use</li> <li>2. The Redemption (Enhanced) Promotion must be properly configured for the voucher discount and gallon limit in the Front Office.</li> <li>3. The grades that qualify for the cents-off-per-gallon fuel voucher must be attached to the promotion.</li> <li>4. The template that prints the barcode on the voucher must include the Enhanced Promotion ID for redeeming the voucher</li> </ol>

FSD Number	Enhancement	Dependencies
316022	Fujitsu U-SCAN Self-Checkout Support for DRE	<ol style="list-style-type: none"> <li>1. Registry: Set this DWORD value to 1. If the key is not there, add it:            \\ HKEY_CURRENT_USER \ Software \ OptimalRobotics \ Robot \ OrderManager \ PrintCustRcptImmediateOnBetweenOrders</li> <li>2. C: \Program Files\POSWare\WinPOS\VPOSCFG.INI (Add the following lines under the {VPOSConfig} section:            UseDynamicReceipt=1            PrintDynamicReceiptHeader=1</li> </ol>
322087	Fleet Card Differentiation for Zip Code Prompting	<ol style="list-style-type: none"> <li>1. In the payments configuration (Card Processing Profiles), confirm the prompt for zip code is not checked for Fleet Cards.</li> <li>2. Turn off the option to prompt for Zip Code the first card swipe in order to react to the F2 decline if returned. This allows for not prompting for the Zip Code on any credit but if the card happens to be Fleet, the payment system will return the already supported F1 decline with the prompt fields required to complete the Fleet transaction.</li> </ol>
328598	IBM 67 Key Keyboard Support	<ol style="list-style-type: none"> <li>1. In POST Configuration, the keyboard must be set to "Standard" and the "Use OPOS" checkbox must be set.</li> <li>2. The Keyboard Driver Name must be set to "POSKybd".</li> </ol>
350987	West Virginia Online WIC EBT	<ol style="list-style-type: none"> <li>1. Use of the same Retalix Global Payment DLL versions that were certified with the Kentucky Online WIC EBT program are required</li> </ol>



