



■ *Release Notes & What's New*

■ *ISS45 8.1.7.0-160*



ISS45 Release Notes

Date of Issue	Product ID Num.	Part Number	Brief Description
January 2005	45001/081	89000195	Initial Release
Other Releases: 89000233, 89000263, 89000263, 89000308, 89000308, 89000401, 89000417, 89000416, 89000480, 89000490, 89000508, 89000521, 89000532, 89000547, 89000573, 89000583, 89000587, 89000590, 89000613, 89000641, 89000658, 89000683, 89000692, 89000693, 89000712, 89000720, 89000734, 89000737, 89000740, 89000747			
December 2012	45001/081	89000748	8.1.5.4-100 Release
February 2013	45001/081	89000758	8.1.6.0-110 Release
May 2013	45001/081	89000767	8.1.6.0-130 Release
August 2013	45001/081	89000782	8.1.7.0 Release
September 2013	45001/081	89000791	8.1.6.0-140 Release
September 2013	45001/081	89000792	8.1.7.0-060 Release
October 2013	45001/081	89000793	8.1.7.0-080 Release
November 2013	45001/081	89000794	8.1.6.0-150 Release
December 2013	45001/081	89000796	8.1.7.0-090 Release
May 2014	45001/081	89000812	8.1.7.0-120 Release
October 2014	45001/081	89000815	8.1.7.0-150 Release
February 2015	45001/081	89000822	8.1.7.0-160 Release

**©Copyright NCR Corporation 1995-2015
All rights reserved**

This publication is protected by federal copyright law. This document and its contents are the proprietary, confidential information and property of NCR Corporation ("NCR"). Unauthorized disclosure, reproduction, distribution or use of this document and/or its contents in any form is strictly prohibited. No part of this publication may be reproduced or transmitted into any human or computer language in any form or by any means, stored in a retrieval system, transmitted, redistributed, translated or disclosed to third parties, or de-compiled in any way including, but not limited to, photocopy, photograph, electronic, mechanical, magnetic or manual without the express written permission of NCR or its licensors, if any. This document, notwithstanding the above, may be distributed in electronic or printed form by NCR to personnel who are employed by either (a) a licensee and end user of the subject system of this document or (b) personnel from an authorized NCR Channel Partner or Solution Provider of the subject system of this document. All copies of this document so distributed and/or so authorized, shall contain a full copy of this copyright notice.

NCR has prepared this document as a guide to the proper installation, operation, customization and/or maintenance of NCR products. The drawings and specifications contained herein are the property of NCR and/or its licensors.

NCR endeavors to ensure that the information in this document is correct and fairly stated but does not accept liability for any error or omission. NCR makes no representation or warranties with respect to the contents hereof, and specifically disclaims any implied warranties of merchantability or fitness for a particular purpose or non-infringement. No commitments by NCR or its suppliers are made by or from this documentation which is provided for information only.

Development of NCR products and documentation is continuous: NCR reserves the right to revise this publication and to make changes at any time to the contents hereof or to the products herein described or discussed without notice and without any obligation for NCR to notify any person or organization of such revision or changes. Information published in this document will likely be superseded, and it is recommended that users regularly check for updates and newer versions.

The trademarks NCR, Retailix, StoreNext, ISS45, ScanMaster, R10, ACS, PocketOffice, RPO, RBO, ABO, Connected Payments, ServerEPS, Connected Services, Connected Loyalty, WinEPS and all other NCR product names are registered trademarks or trademarks of NCR; all other trademarks or registered trademarks are the property of their respective owners. Third-party products, services, or company names referenced in this document may be trademarked or copyrighted by their respective owners, and are for identification purposes only. Copyrights, trademarks and license agreements shall be governed and construed in accordance with the laws of the State of New York and the Federal Arbitration Act, and shall benefit NCR, its successors, and assigns.

Address comments and corrections regarding this document to:

Attn: Software Program Director
NCR
797 Commonwealth Drive
Warrendale, PA 15086

Table of Contents

Table of Contents	i
Introduction	1
418396 – Check Flip support for NCR 7167\7168 Printers (POS)	2
Other Enhancements	4
Technical Reference Appendix	5
Out of Scope	5

Introduction

Enhancements were recently made to the Retailix ISS45 system. The changes are reflected in the accompanying ISS45 8.1.7.0-160 software. The Change Request Document (CRD) number assigned to each enhancement is listed in the description heading. Following the change description is an abbreviation of the ISS45 area affected:

(FO) – Front Office

(POS) – WinPOS

The enhancements explained in the following pages are not included in the latest Office Users Guide, WinPOS User Guide or Office Administrator's Reference. If you have any questions regarding this release, please contact Retailix Support.

Note:

ISS45 Release 8.1.7.0-150 and higher requires the S&H / YouTech / Prologic option on the HASP be set. The ISS45 system will not work with the S&H / YouTech / Prologic system unless the setting is on.

Note:

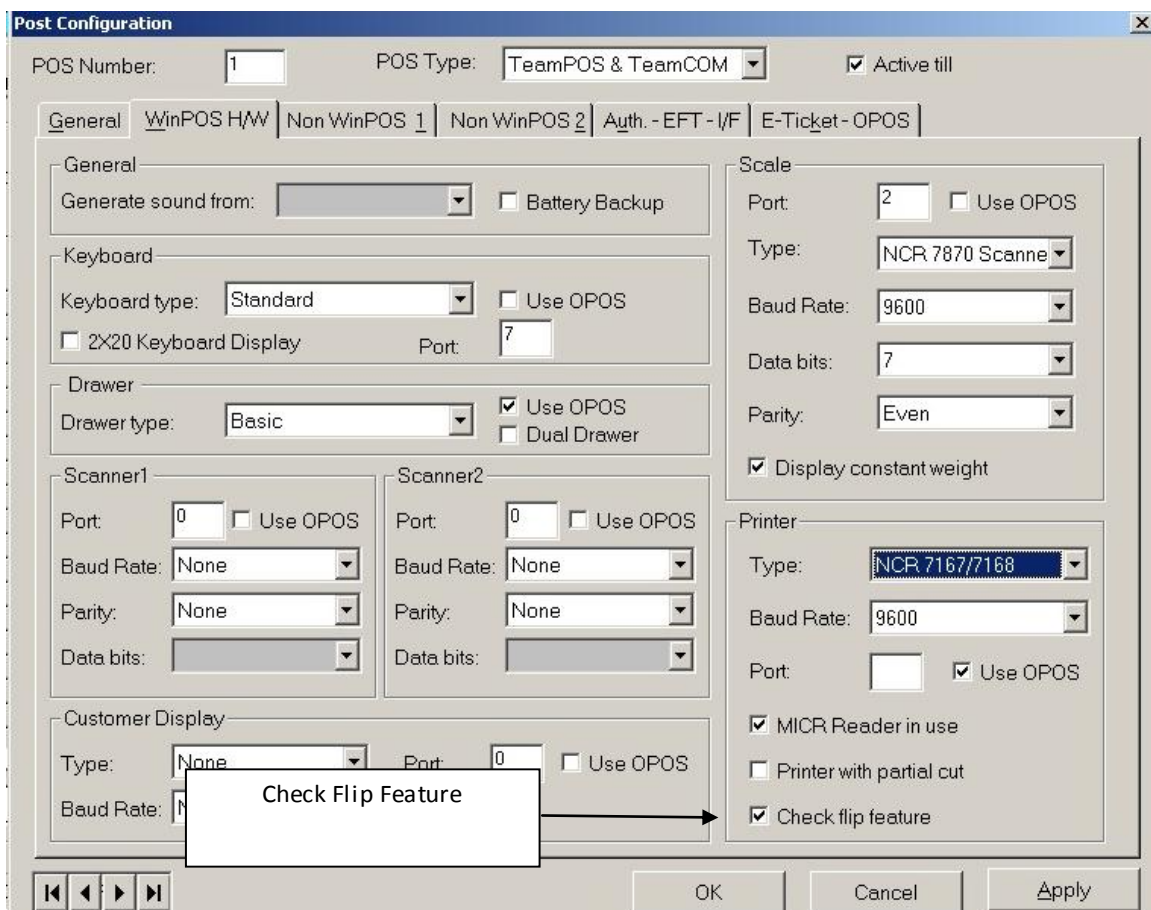
ISS45 Release 8.1.7.0-150 and higher requires the Self-Checkout option on the HASP be set. The ISS45 system will not work with any Self-Checkout system unless the setting is on.

418396 – Check Flip support for NCR 7167\7168 Printers (POS)

ISS45 now supports the check flip feature for NCR 7167 and NCR 7168 printers.

Note:

The check flip feature is enabled using the “Check Flip Feature” checkbox on the Post Configuration Screen’s WinPOS H/W Tab.



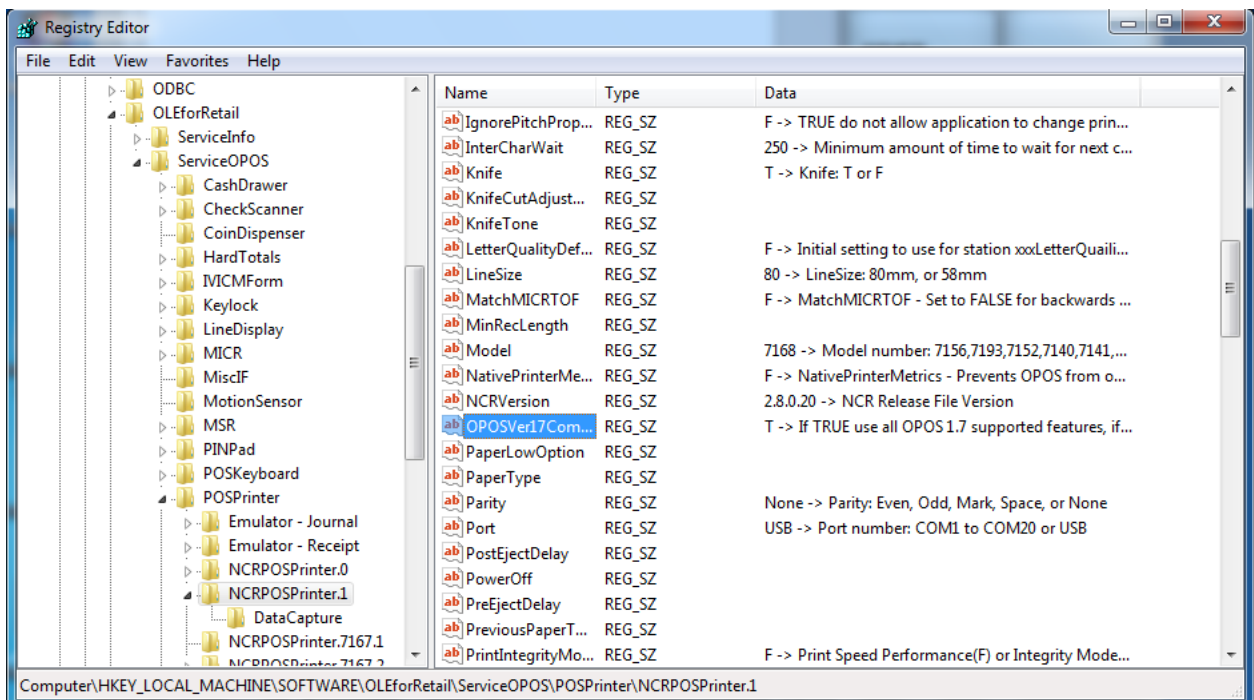
When “Check flip feature” is enabled for the POS, the POS presents instructions to the cashier (e.g. “Insert Check Face Up/Down”, etc.) and ensures events (i.e. MICR read, template printing and endorsement) occur in the proper sequence when tendering a check.

Navigate to HKEY_LOCAL_MACHINE -> SOFTWARE -> OLEforRetail -> ServiceOPOS -> POSPrinter -> <Name of Installed Printer>. "NCRPOSPrinter.1"

Set the following registry setting in the OPOS Profile (OPOSVer17Compliance):

Change the value of OPOSVer17Compliance from F(false) to T(true).

OPOSVer17Compliance **T** -> If TRUE use all OPOS 1.7 supported features, if FALSE do not use features that might break previous application

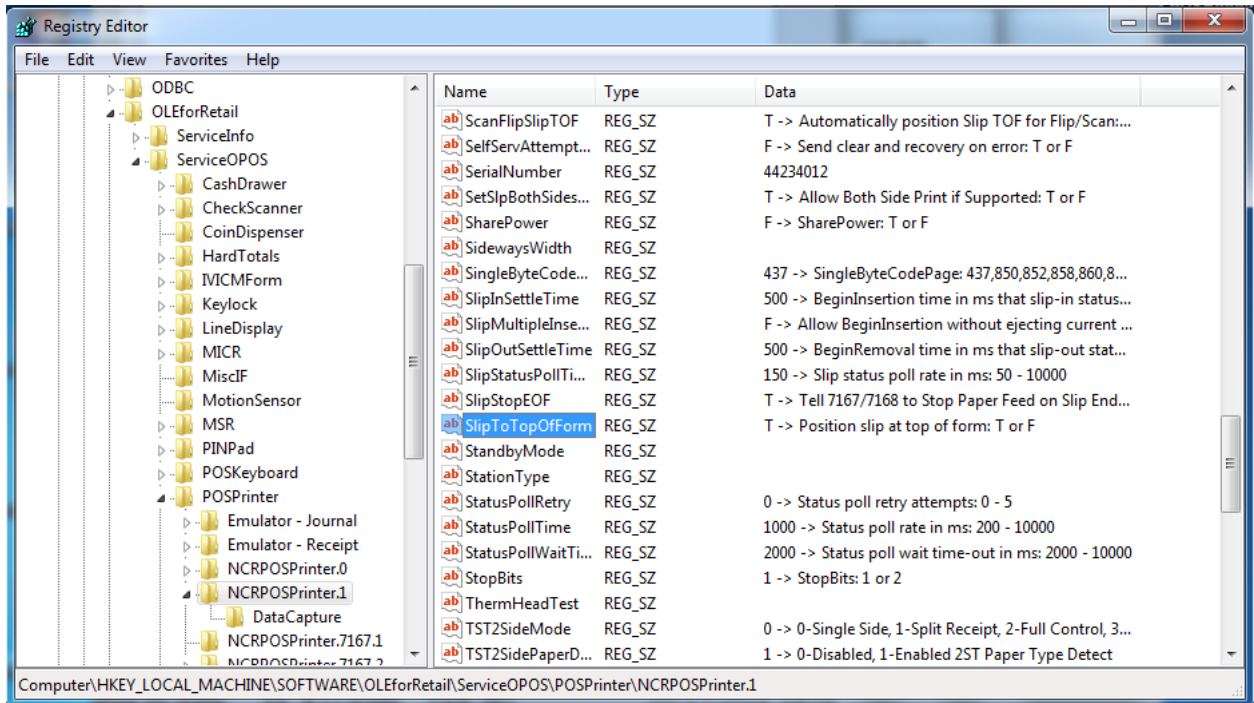


Navigate to HKEY_LOCAL_MACHINE -> SOFTWARE -> OLEforRetail -> ServiceOPOS -> POSPrinter -> <Name of Installed Printer>. "NCRPOSPrinter.1"

Set the following registry setting in the OPOS Profile (SlipToTopOfForm):

Change the value of SlipToTopOfForm from F(false) to T(true).

SlipToTopOfForm **T** -> Position slip at top of form: T or F



Other Enhancements

This release was tested with the following Connected Payments and WinEPS dlls.

- Connected Payments

MTX_POS.dll	828.1.0.98
MTX_EPS.dll	828.1.11.625
MTX_SE.dll	828.1.0.3
- WinEPS

MTX_POS.dll	828.0.1.207
MTX_EPS.dll	828.0.1.372
MTX_POS_CP.dll	828.1.0.98
MTX_POS_WinEPS.dll	828.0.1.207
MTX_POS_EMPTY.dll	No Version

This release was tested with the following Windows Updates.

- MFS1 - Nobilis - Windows 7 Profession SP1
- POS - Fujitsu 3K - WePOS.

Technical Reference Appendix

Out of Scope

A limitation of the new feature in this release is listed below (and was not addressed in development).

Note:

The limitations below are known as of this writing, and are provided in order to assist users and support personnel to plan, install and operate the capabilities described in this document. While Retalix endeavors to ensure that this information is correct and fairly stated, no attempt is made here to catalog all limitations that could be construed or that may become known in the course of use or experience.

FSD Number	Enhancement	Out of Scope
418396	Check Flip Support for NCR 7167\7168 Printers	Enhancements made for Check Flip on the NCR 7167 and 7168 Printers were made for the current release only (and will not be made to previous ISS45 releases).



© NCR Corporation, 2015

NCR endeavors to ensure that the information in this document is correct and fairly stated but does not accept liability for any error or omission.

The development of NCR products and services is continuous and published information may not be up to date. It is important to check the current position with NCR. This document is not part of a contract or license, save insofar as may be expressly agreed.

NCR Corporation
2651 Satellite Blvd.
Duluth, GA 30096

P/N 89000822
PIN 45001/081