



■ *Release Notes & What's New*

■ *ISS45 8.1.7.0-170*



## ISS45 Release Notes

Date of Issue	Product ID Num.	Part Number	Brief Description
January 2005	45001/081	89000195	Initial Release
<b>Other Releases:</b> 89000233, 89000263, 89000263, 89000308, 89000308, 89000401, 89000417, 89000416, 89000480, 89000490, 89000508, 89000521, 89000532, 89000547, 89000573, 89000583, 89000587, 89000590, 89000613, 89000641, 89000658, 89000683, 89000692, 89000693, 89000712, 89000720, 89000734, 89000737, 89000740, 89000747			
December 2012	45001/081	89000748	8.1.5.4-100 Release
February 2013	45001/081	89000758	8.1.6.0-110 Release
May 2013	45001/081	89000767	8.1.6.0-130 Release
August 2013	45001/081	89000782	8.1.7.0-050 Release
September 2013	45001/081	89000791	8.1.6.0-140 Release
September 2013	45001/081	89000792	8.1.7.0-060 Release
October 2013	45001/081	89000793	8.1.7.0-080 Release
November 2013	45001/081	89000794	8.1.6.0-150 Release
December 2013	45001/081	89000796	8.1.7.0-090 Release
May 2014	45001/081	89000812	8.1.7.0-120 Release
October 2014	45001/081	89000815	8.1.7.0-150 Release
February 2015	45001/081	89000822	8.1.7.0-160 Release
March 2015	45001/081	89000825	8.1.7.0-170 Release

**©Copyright NCR Corporation 1995-2015  
All rights reserved**

This publication is protected by federal copyright law. This document and its contents are the proprietary, confidential information and property of NCR Corporation ("NCR"). Unauthorized disclosure, reproduction, distribution or use of this document and/or its contents in any form is strictly prohibited. No part of this publication may be reproduced or transmitted into any human or computer language in any form or by any means, stored in a retrieval system, transmitted, redistributed, translated or disclosed to third parties, or de-compiled in any way including, but not limited to, photocopy, photograph, electronic, mechanical, magnetic or manual without the express written permission of NCR or its licensors, if any. This document, notwithstanding the above, may be distributed in electronic or printed form by NCR to personnel who are employed by either (a) a licensee and end user of the subject system of this document or (b) personnel from an authorized NCR Channel Partner or Solution Provider of the subject system of this document. All copies of this document so distributed and/or so authorized, shall contain a full copy of this copyright notice.

NCR has prepared this document as a guide to the proper installation, operation, customization and/or maintenance of NCR products. The drawings and specifications contained herein are the property of NCR and/or its licensors.

NCR endeavors to ensure that the information in this document is correct and fairly stated but does not accept liability for any error or omission. NCR makes no representation or warranties with respect to the contents hereof, and specifically disclaims any implied warranties of merchantability or fitness for a particular purpose or non-infringement. No commitments by NCR or its suppliers are made by or from this documentation which is provided for information only.

Development of NCR products and documentation is continuous: NCR reserves the right to revise this publication and to make changes at any time to the contents hereof or to the products herein described or discussed without notice and without any obligation for NCR to notify any person or organization of such revision or changes. Information published in this document will likely be superseded, and it is recommended that users regularly check for updates and newer versions.

The trademarks NCR, Retailix, StoreNext, ISS45, ScanMaster, R10, ACS, PocketOffice, RPO, RBO, ABO, Connected Payments, ServerEPS, Connected Services, Connected Loyalty, WinEPS and all other NCR product names are registered trademarks or trademarks of NCR; all other trademarks or registered trademarks are the property of their respective owners. Third-party products, services, or company names referenced in this document may be trademarked or copyrighted by their respective owners, and are for identification purposes only. Copyrights, trademarks and license agreements shall be governed and construed in accordance with the laws of the State of New York and the Federal Arbitration Act, and shall benefit NCR, its successors, and assigns.

Address comments and corrections regarding this document to:

Attn: Software Program Director  
NCR  
797 Commonwealth Drive  
Warrendale, PA 15086

# Table of Contents

<b>Table of Contents</b> .....	<b>i</b>
<b>Introduction</b> .....	<b>1</b>
426281 – New Retalix Job Agent (FO/Sys) .....	2
SQL Server Express Registry.....	3
Front Office .....	4
New “Retalix Agent”– For Viewing Scheduled Reports .....	11
<b>Technical Reference Appendix</b> .....	<b>14</b>
Out of Scope .....	14
Dependencies .....	15



# Introduction

An enhancement was recently made to the Retalix ISS45 system. The change is reflected in the accompanying ISS45 8.1.7.0-170 software. The Change Request Document (CRD) number assigned to the enhancement is listed in the description heading. Following the change description is an abbreviation of the ISS45 area affected:

(FO) – Front Office

(Sys) – System

The enhancement explained in the following pages is not included in the latest Office Users Guide, WinPOS User Guide or Office Administrator's Reference. If you have any questions regarding this release, please contact Retalix Support.

## 426281 – New Retalix Job Agent (FO/Sys)

SQL Server Express (which replaced the Microsoft SQL Server Desktop Engine in SQL Server 2005) is now supported in this release. The SQL Server Agent (used by previous versions of ISS45) is not available with SQL Server Express therefore a new Agent called Retalix Agent has been created which will now be used with both SQL Server 2008 and SQL Express 2008.

Installing patch 8.1.7.0-170 and higher will automatically add the agent to the System Administration's Technical Support folder when using either SQL Express or SQL Server Workgroup edition.

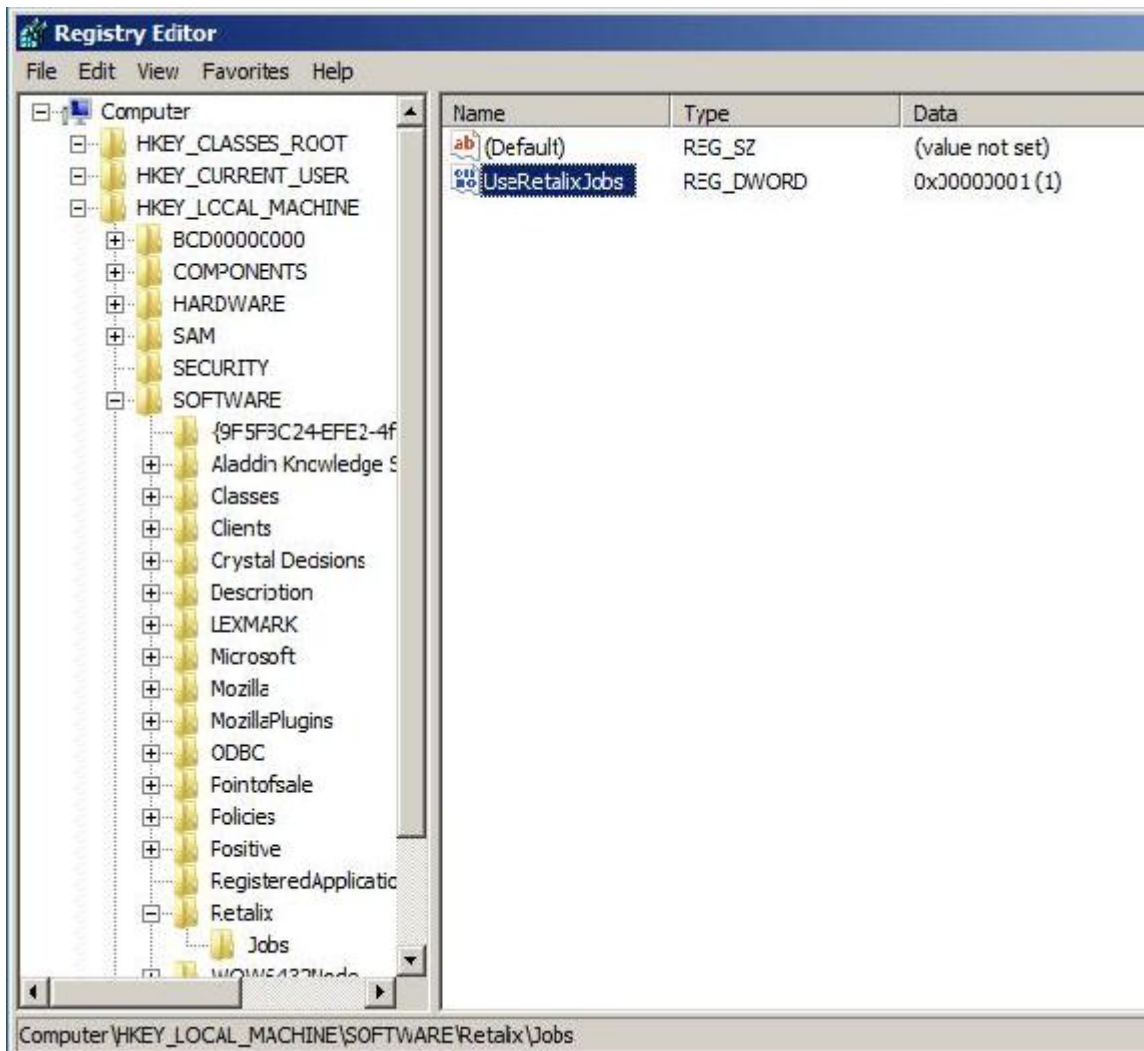
A new "Retalix Job Agent" has been implemented and performs the following ISS45 functions previously performed by the SQL Server Agent:

- Report Scheduling
- Automatic EOD
- SQL Transaction Log Backups

## SQL Server Express Registry

The following registry will need modified for SQL Server Express. The default value is 0 and must be changed to 1.

Computer\HKEY\_LOCAL\_MACHINE\SOFTWARE\Retalix\Jobs  
“UseRetalixJobs” Data value needs set to 1.

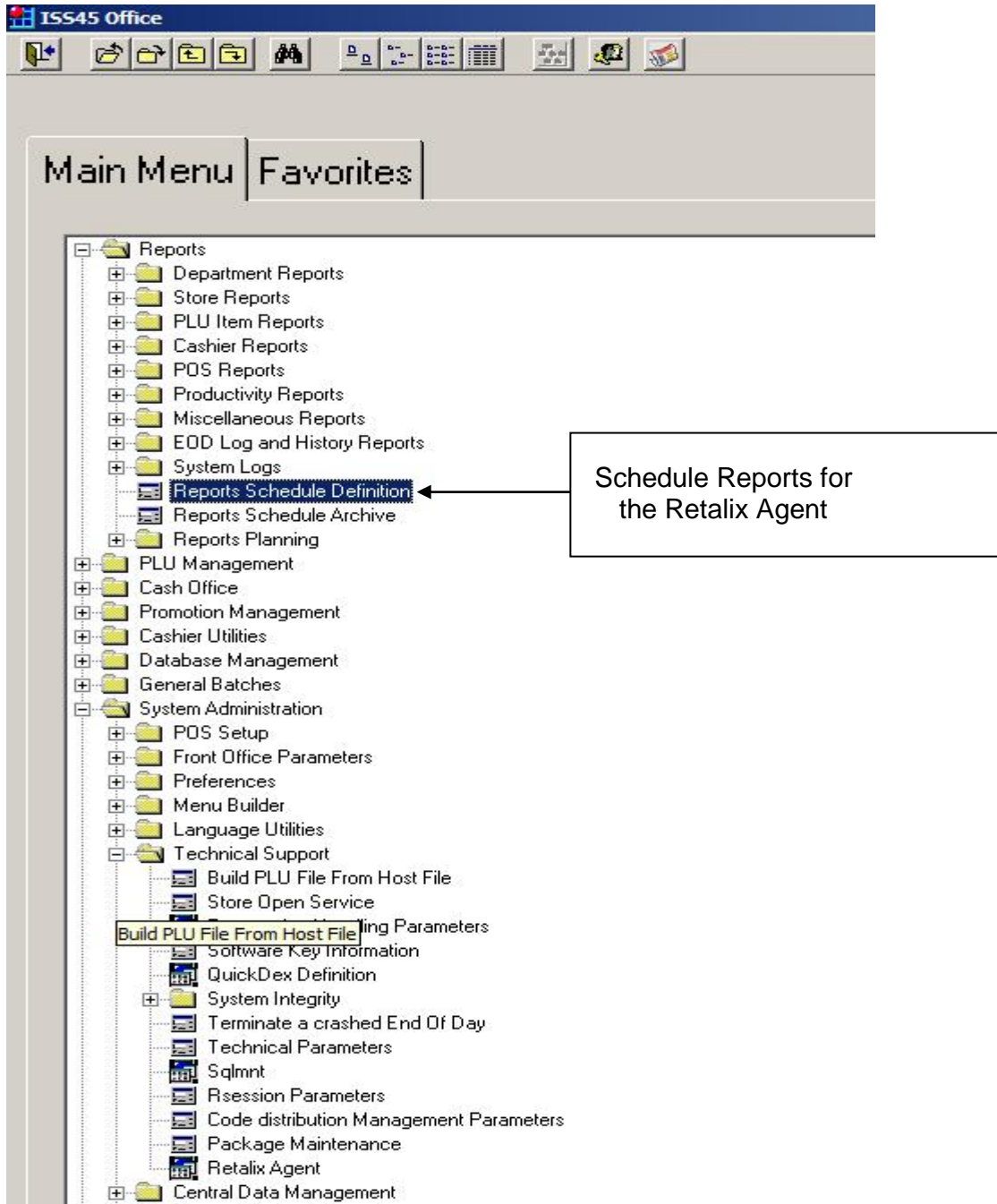


# Front Office

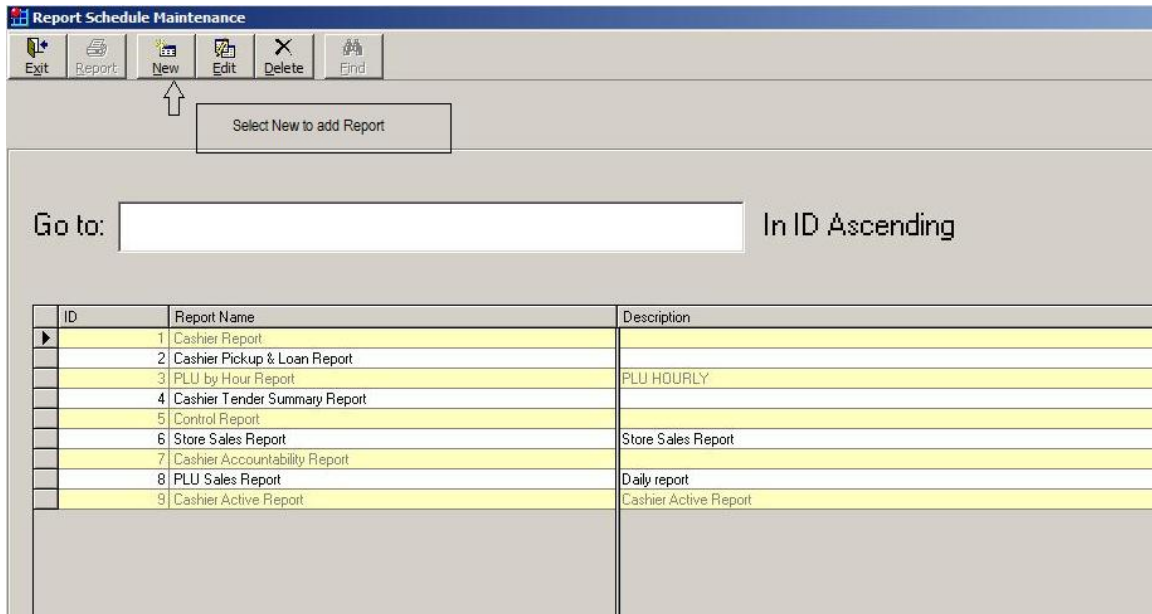
## Scheduling Reports

To define report schedules use existing **Reports Schedule Definition**.

From the Reports option, select Report Schedule Definition. The Report Schedule Maintenance Window appears.

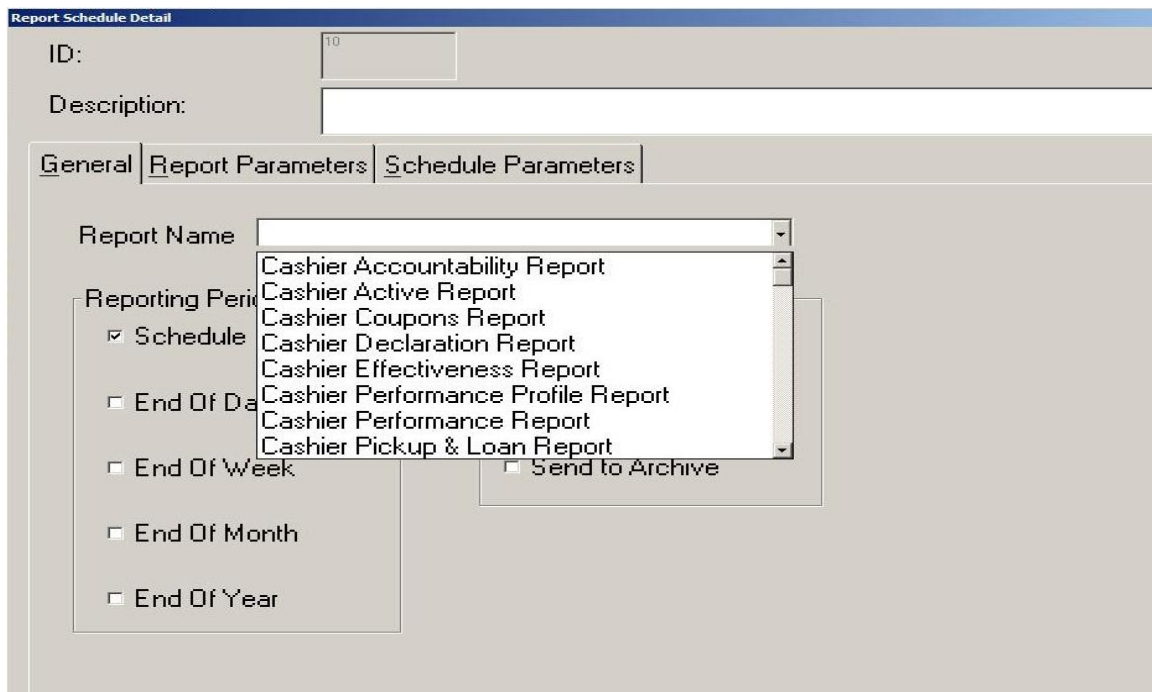


Click *New* to add a new report schedule. The Report Schedule Detail dialog box is displayed.



Enter a report schedule description.

From the Report Name dropdown list, choose the required report (all the system reports are available in the list).



Choose a reporting period. If you select the schedule option, you must use the Schedule Parameters tab to set the frequency of reporting.

Choose a destination for the report. You can print either at MFS1, MFS2, or send the report to the archive.

**Report Schedule Detail**

ID: 3

Description: Department Report

General | Report Parameters | Schedule Parameters

Report Name: Department Report

**Reporting Period**

- Schedule
- End Of Day
- End Of Week
- End Of Month
- End Of Year

**Destination**

- Print at MFS1
- Print at MFS2
- Send to Archive

Select the Report Parameters tab. The Report Parameter dialog box is displayed.

**Report Schedule Detail**

ID:

Description:

General | **Report Parameters** | Schedule Parameters

No	Description	Value
1	Report Type = 0	
2	Period	
3	Date From	
4	Date To	
5	All Cashiers	
6	Cashier List	
7	Optional Date	

Click the *Set Parameters* button to choose a date range. The Schedule Parameters dialog box is displayed.

The screenshot shows the "Report Schedule Detail" dialog box with the "Schedule Parameters" tab selected. The "ID" field contains the value "3" and the "Description" field contains "Department Report".

The "Schedule Parameters" section includes the following options and fields:

- One time: On Date: 03/10/2015, At time: 10:03
- Recurring: Start Date: 03/10/2015, End Date: 12/31/2015
  - Every Hour: Starting at: 10:03, Ending at: 23:00
  - Occurs once at: 10:00

The "Generate at" section includes checkboxes for days of the week (Mon, Tue, Wed, Thu, Fri, Sat, Sun), all of which are checked. There are "Select All" and "Unselect All" buttons next to the checkboxes.

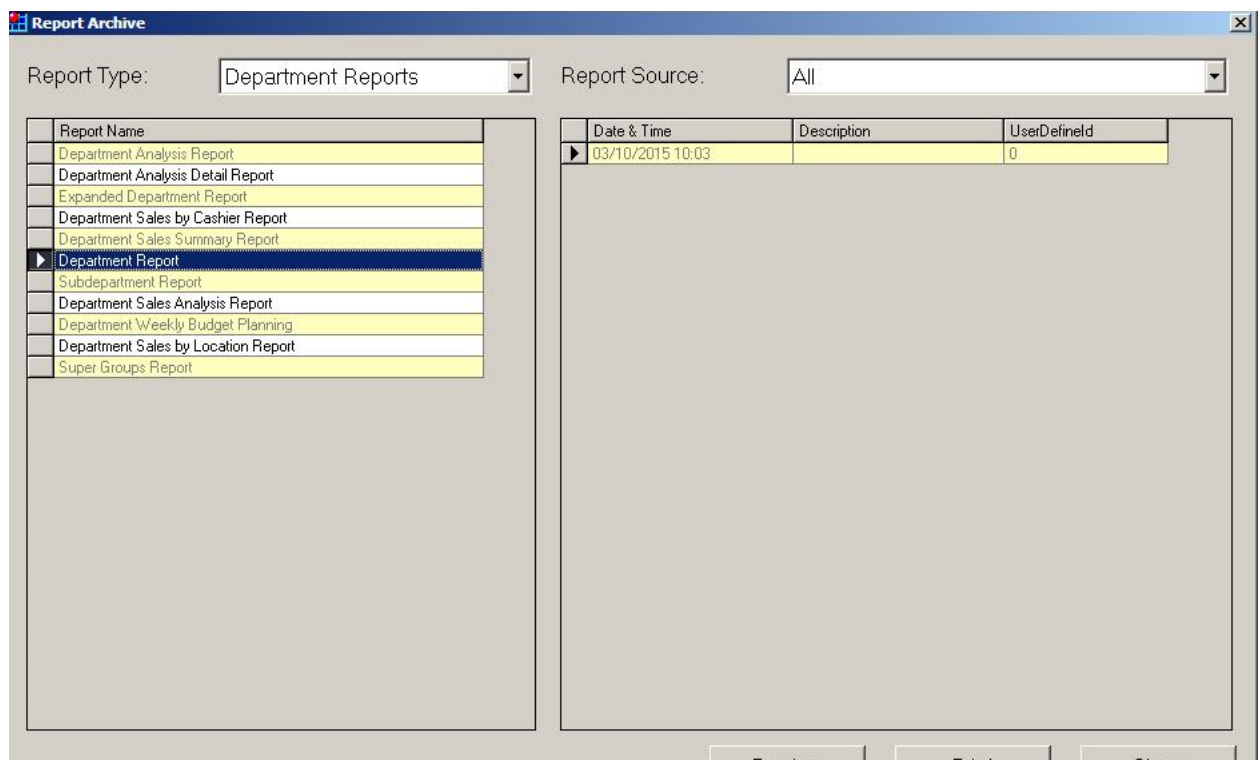
At the bottom of the dialog, there are navigation buttons (back, forward, etc.), and "OK", "Cancel", and "Apply" buttons.

Click *OK* or *Apply* to save.

## Reports Schedule Archive

### To preview or print a report from the archive

From the Reports option, select Report Schedule Archive. The Report Archive Window appears.



From the Report Type dropdown list, select the required report.

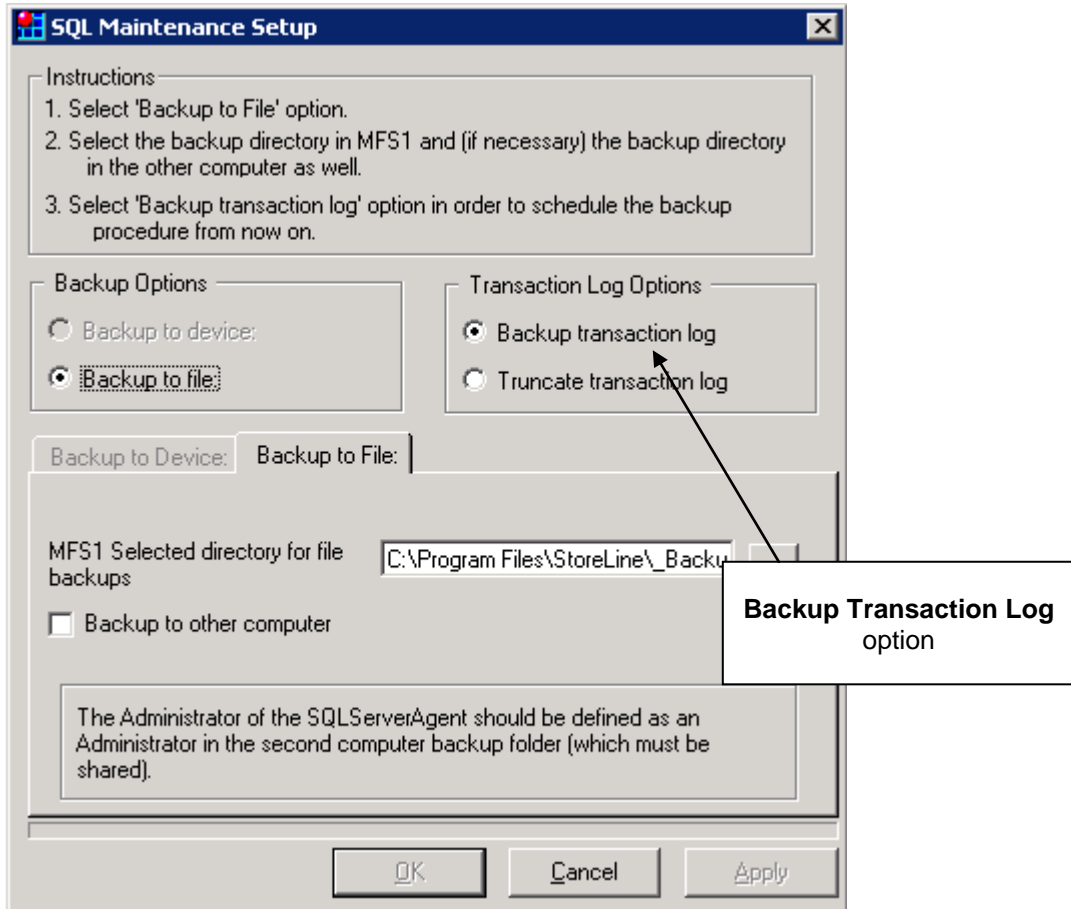
From the Report Source dropdown list, select either:

- All
- End Of Day
- Cash Office
- Report Schedule

From the list on the left, select the required report and then click *Preview*.

## SQLMNT Changes

When the Backup Transaction Log Option is selected in the Front Office, the job is automatically created using the Retalix Job Agent. If the Truncate Transaction Log option is alternatively selected, the backup job is removed from the Job Activity Monitor.



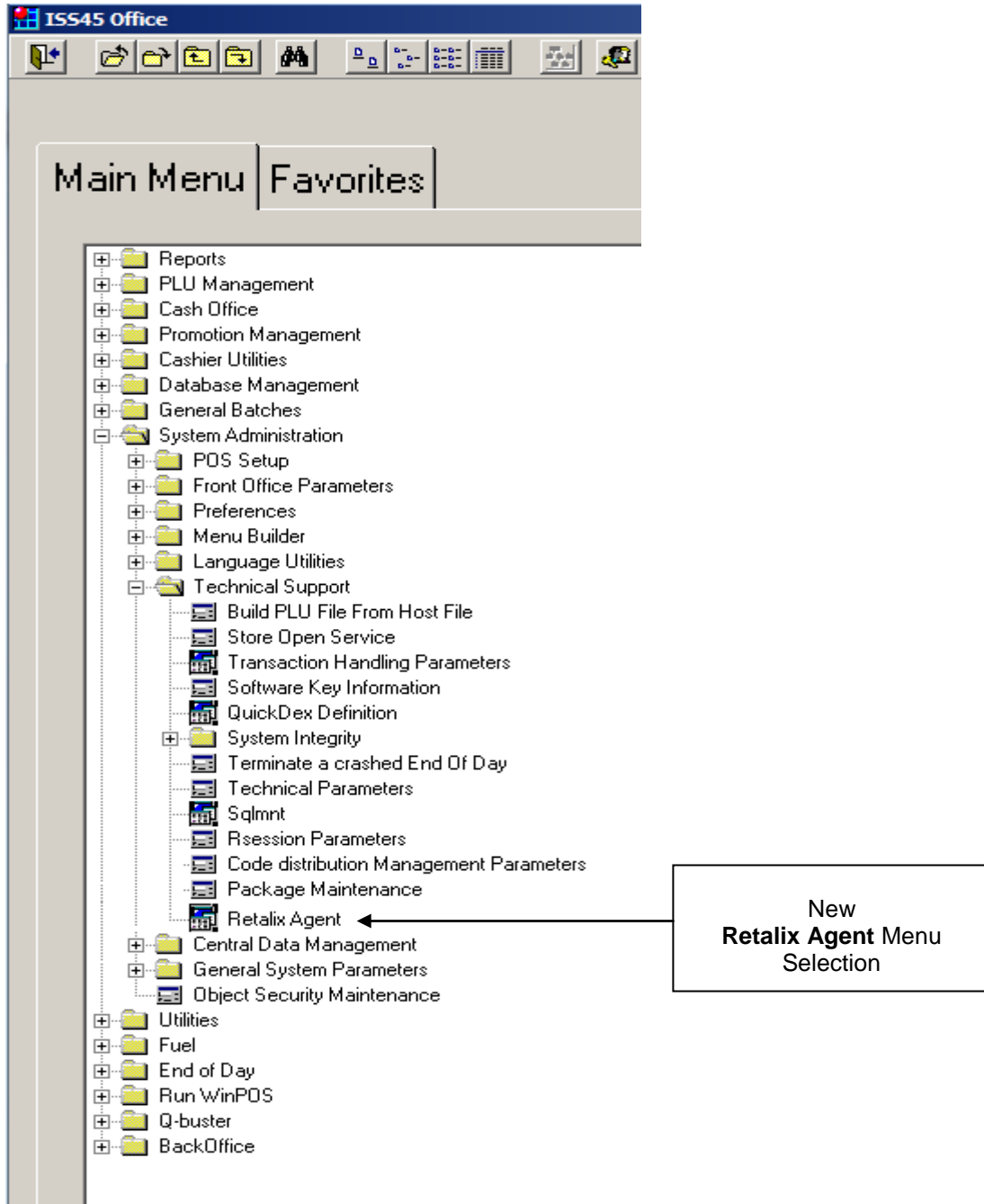
## Automatic EOD Changes

When the General System Parameter "Automatic End of Day" parameter (located in the Store \ Front Office \ End of Day \ General folder) is set to "Yes", the EOD job is automatically created using the Retalix Job Agent. If parameter is later set to "No", the job is automatically removed from the Job Activity Monitor.

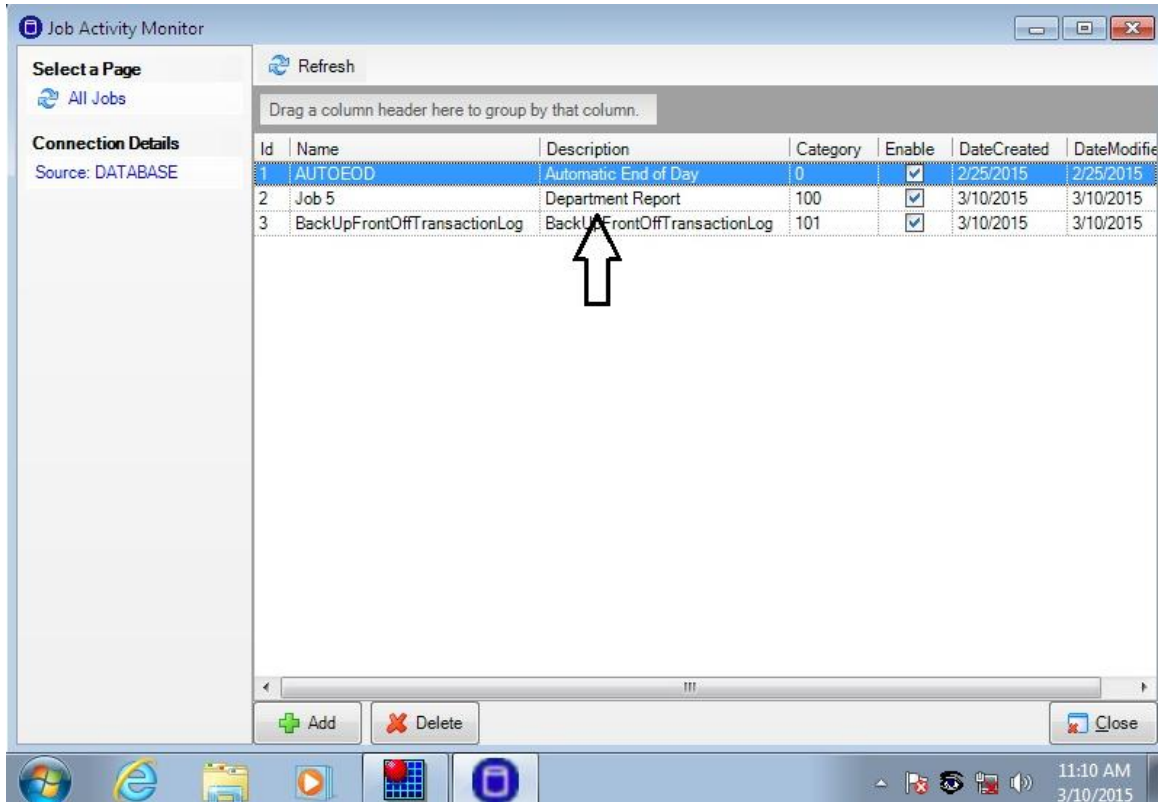
# New “Retalix Agent”– For Viewing Scheduled Reports

## Menu Selection

The System Administration’s Technical Support folder displays the new Retalix Agent menu selection.



When launched, the new “Job Activity Monitor” screen displays all jobs created through Report Schedule Definition, Automatic EOD or SQL Transaction Log Backup Maintenance.



**NOTE:**

The “Job Activity Monitor” screen should be used to view scheduled jobs only.

## System

The new Job Agent runs as a background service with a dependency on POS\_SRV\_MANAGER. Job activity is sent to either the Event Viewer or Log File (based on job settings).

**Note:**

The Retalix Agent logs to the C:\PCMASTER\LOG\RetalixAgentStep.log file by default.

**Note:**

The new "Retalix.Storeline.SVC.Agent.exe" job agent file is located in the "C:\Program Files\StoreLine\Office\Components\Dotnet" folder. The configuration settings are found in the "Retalix.StoreLine.SVC.Agent.exe.Config" file (in the same folder). The following command line arguments are supported for executing the job agent.

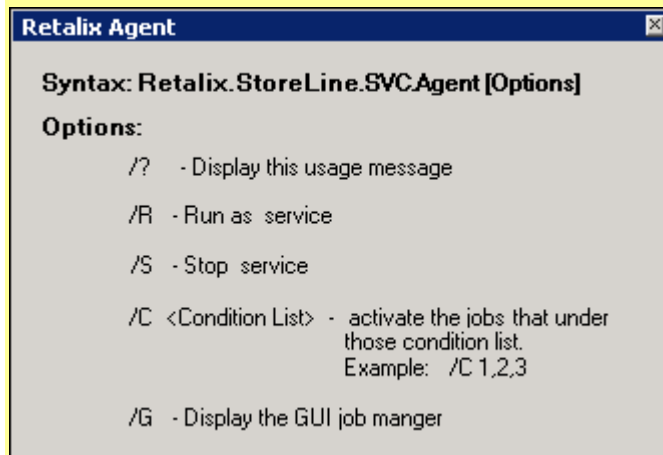
/r = Start the service. Runs all the schedule jobs and updates next running time.

/s = Stop the service.

/c = Activate the entire conditioned schedule that matches the conditions set. The process updates next running time.

/g = Displays the GUI manger for managing Jobs manually.

/? = Displays arguments for help purposes (below):



```
Retalix Agent
Syntax: Retalix.StoreLine.SVC.Agent [Options]
Options:
  /? - Display this usage message
  /R - Run as service
  /S - Stop service
  /C <Condition List> - activate the jobs that under
                       those condition list.
                       Example: /C 1,2,3
  /G - Display the GUI job manger
```

**Note:**

The "UseRetalixJobs" registry entry controls whether the SQL Server Agent or the Retalix Agent is used. The registry location is HKEY\_LOCAL\_MACHINE\SOFTWARE\Retalix\JOBS. A setting of 0 = SQL Agent Mode and 1 = Retalix Job Agent.

# Technical Reference Appendix

## Out of Scope

A limitation of the new feature in this release is listed below (and was not addressed in development).

**Note:**

The limitations below are known as of this writing, and are provided in order to assist users and support personnel to plan, install and operate the capabilities described in this document. While Retalix endeavors to ensure that this information is correct and fairly stated, no attempt is made here to catalog all limitations that could be construed or that may become known in the course of use or experience.

FSD Number	Enhancement	Out of Scope
426281	New Retalix Job Agent	Support for New Retalix Job Agent is only for the current release (and will not be made to previous ISS45 releases).

## Dependencies

Dependencies to utilize new features in this release are listed below.

FSD Number	Enhancement	Dependencies
426281	New Retalix Job Agent	<ol style="list-style-type: none"><li>1. SQL Server Express 2008 R2 SP2 with Tools</li><li>2. SQL Server 2005 Backwards compatibility</li><li>3. .Net Framework 2.0.</li></ol>



© NCR Corporation, 2015

NCR endeavors to ensure that the information in this document is correct and fairly stated but does not accept liability for any error or omission.

The development of NCR products and services is continuous and published information may not be up to date. It is important to check the current position with NCR. This document is not part of a contract or license, save insofar as may be expressly agreed.

---

**NCR Corporation**  
2651 Satellite Blvd.  
Duluth, GA 30096

**P/N 89000825**  
**PIN 45001/081**