



■ *ISS45 Office Installation Guide, MFS1*
■ *Version 8.1.8.0*



ISS45 Office Installation Guide, MFS1

Date of Issue	Product ID Num.	Part Number	Brief Description
June 2002	45001/032	89000100	Updated for 8.4 Release
September 2002	45001/032	89000110	Updated
February 2011	45001/032	89000614	8152-050 Release
May 2011	45001/032	89000643	8152-050 Release
January 2012	45001/032	89000703	8160-050
August 2013	45001/032	89000773	8.1.7.0 Release
June 2015	45001/032	89000840	Version 8.1.8.0

**©Copyright NCR Corporation 1995-2015
All rights reserved**

This publication is protected by federal copyright law. This document and its contents are the proprietary, confidential information and property of NCR Corporation ("NCR"). Unauthorized disclosure, reproduction, distribution or use of this document and/or its contents in any form is strictly prohibited. No part of this publication may be reproduced or transmitted into any human or computer language in any form or by any means, stored in a retrieval system, transmitted, redistributed, translated or disclosed to third parties, or de-compiled in any way including, but not limited to, photocopy, photograph, electronic, mechanical, magnetic or manual without the express written permission of NCR or its licensors, if any. This document, notwithstanding the above, may be distributed in electronic or printed form by NCR to personnel who are employed by either (a) a licensee and end user of the subject system of this document or (b) personnel from an authorized NCR Channel Partner or Solution Provider of the subject system of this document. All copies of this document so distributed and/or so authorized, shall contain a full copy of this copyright notice.

NCR has prepared this document as a guide to the proper installation, operation, customization and/or maintenance of NCR products. The drawings and specifications contained herein are the property of NCR and/or its licensors.

NCR endeavors to ensure that the information in this document is correct and fairly stated but does not accept liability for any error or omission. NCR makes no representation or warranties with respect to the contents hereof, and specifically disclaims any implied warranties of merchantability or fitness for a particular purpose or non-infringement. No commitments by NCR or its suppliers are made by or from this documentation which is provided for information only.

Development of NCR products and documentation is continuous: NCR reserves the right to revise this publication and to make changes at any time to the contents hereof or to the products herein described or discussed without notice and without any obligation for NCR to notify any person or organization of such revision or changes. Information published in this document will likely be superseded, and it is recommended that users regularly check for updates and newer versions.

The trademarks NCR, Retailix, StoreNext, ISS45, ScanMaster, R10, ACS, PocketOffice, RPO, RBO, ABO, Connected Payments, ServerEPS, Connected Services, Connected Loyalty, WinEPS and all other NCR product names are registered trademarks or trademarks of NCR; all other trademarks or registered trademarks are the property of their respective owners. Third-party products, services, or company names referenced in this document may be trademarked or copyrighted by their respective owners, and are for identification purposes only. Copyrights, trademarks and license agreements shall be governed and construed in accordance with the laws of the State of New York and the Federal Arbitration Act, and shall benefit NCR, its successors, and assigns.

Address comments and corrections regarding this document to:

Attn: Software Program Director
NCR
797 Commonwealth Drive
Warrendale, PA 15086

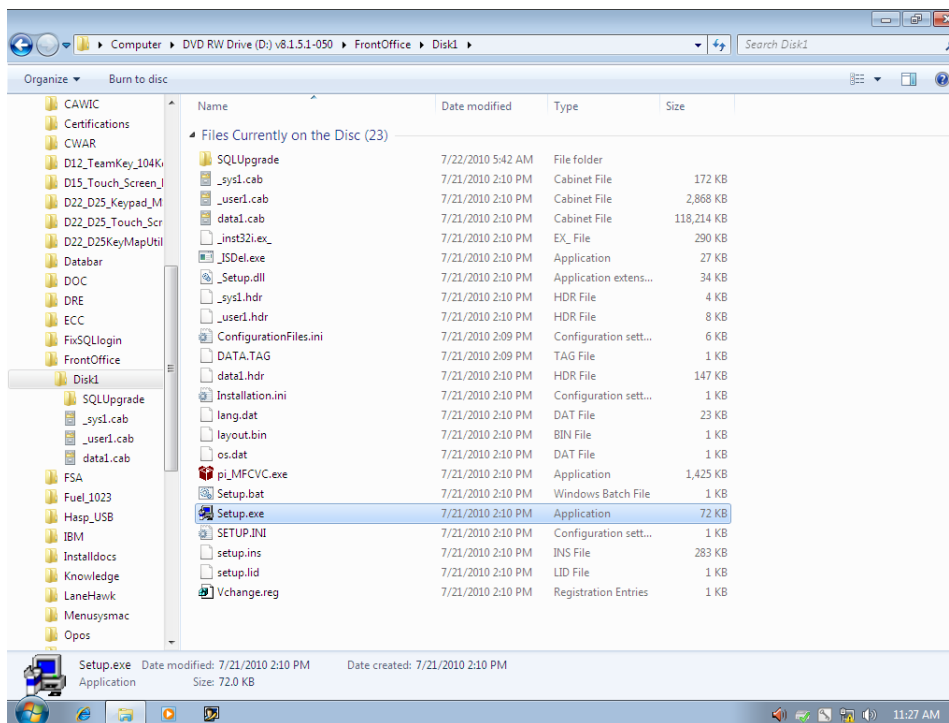
Installing ISS45 Version 8 Front Office on MFS1

It is recommended that the Administrator User be logged into Windows when installing ISS45 v8.

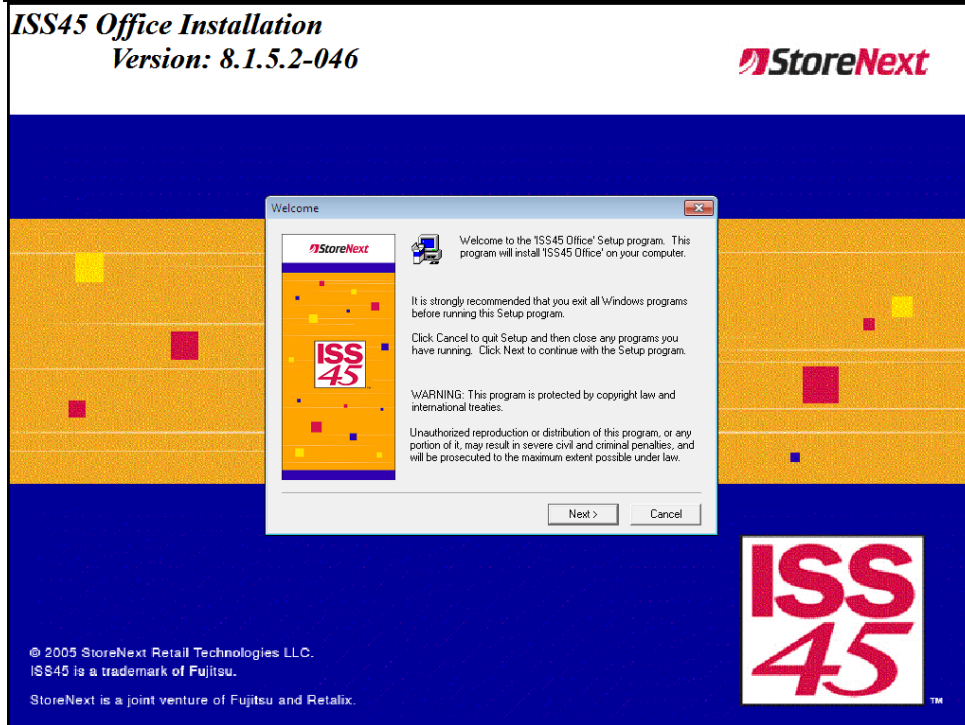
Warning:

Do not install the HASP plug until after step 21 (when the system reboots).

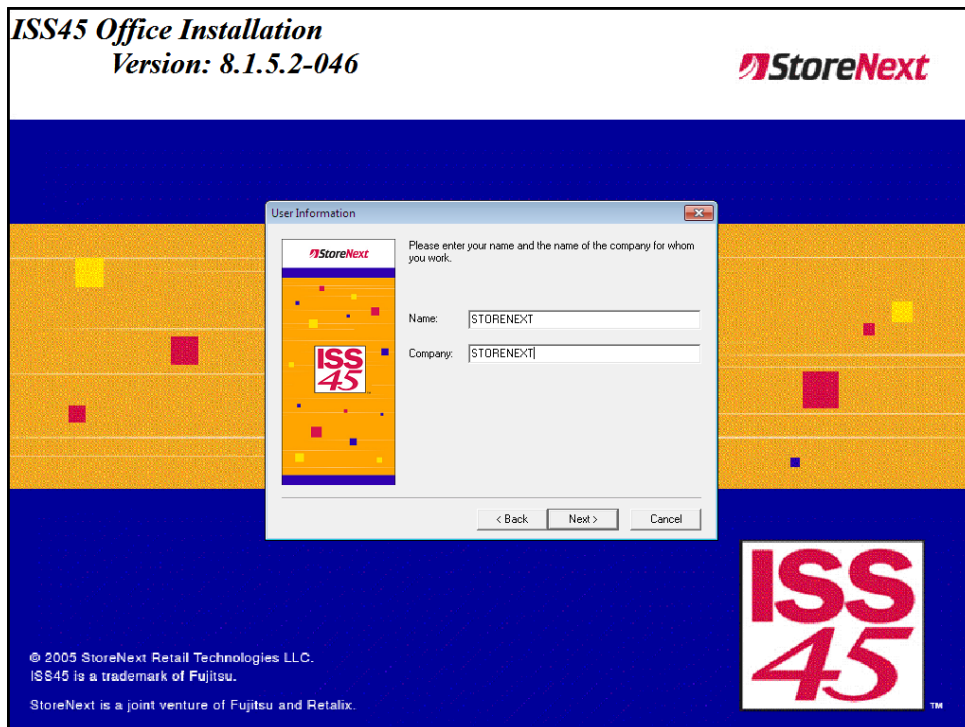
1 Run **Setup.exe** from the Front Office\Disk 1 folder



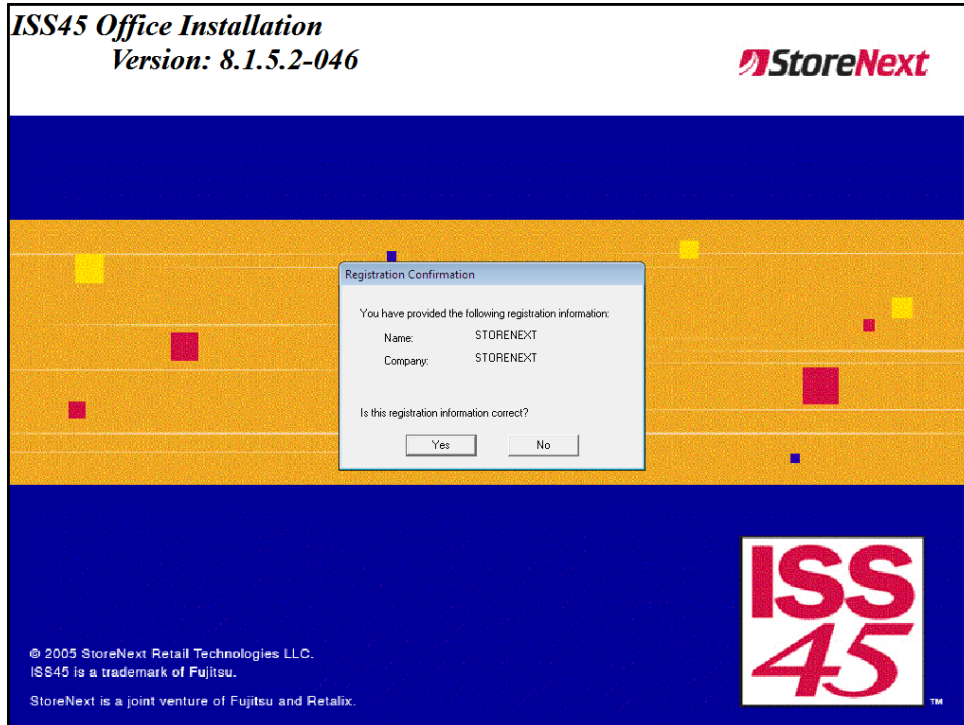
2 Click **Next**.



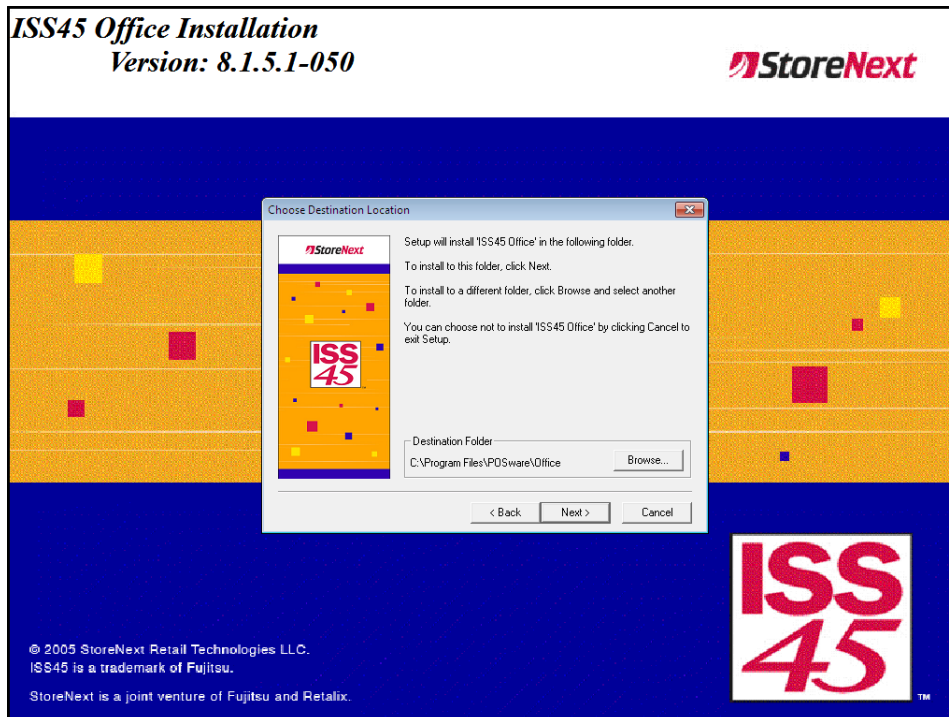
- 3 Enter Customer Name and Company Information and click **Next**.



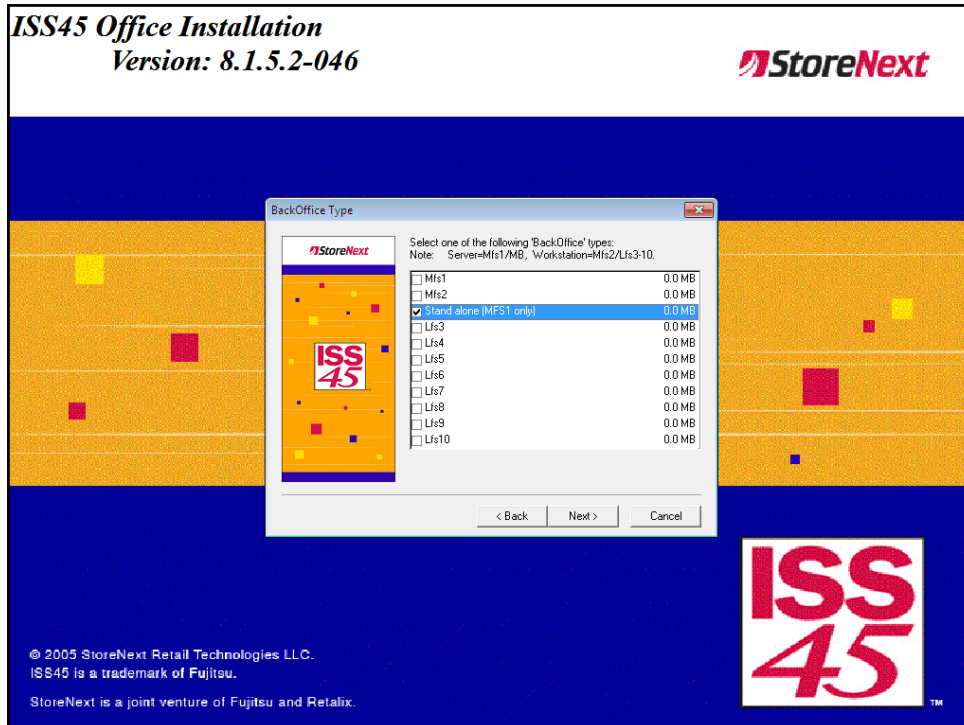
- 4 Click **Yes**.



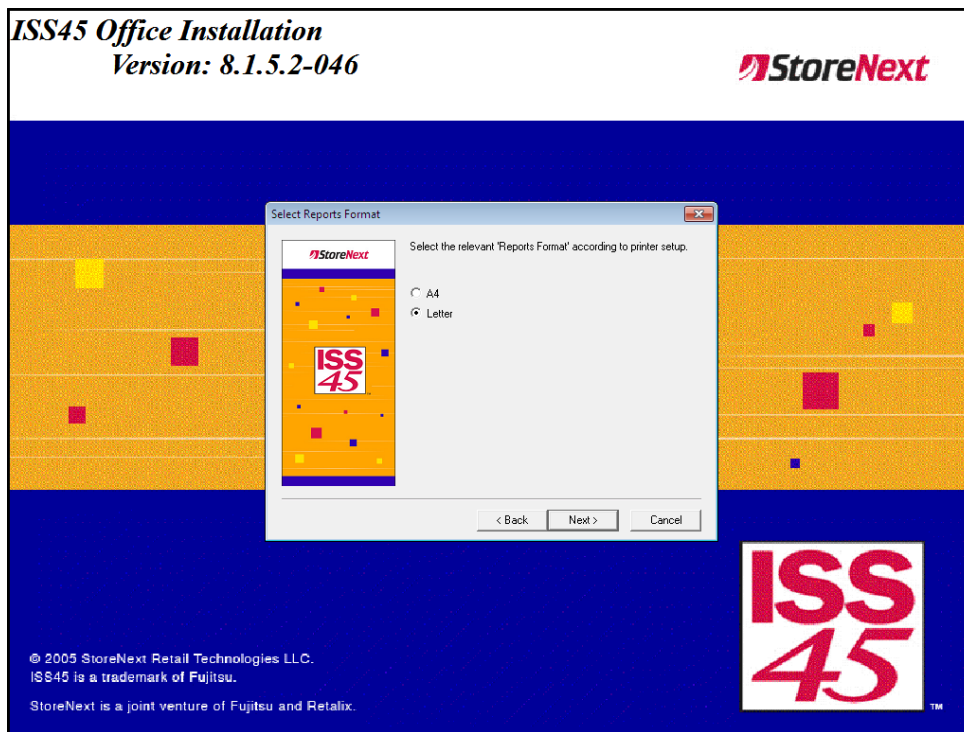
- 5 Click **Next** to accept default installation location (or click on Browse to change installation location).



- 6 Select MFS1 for a dual system or Stand alone for MFS1 only and click **Next**.

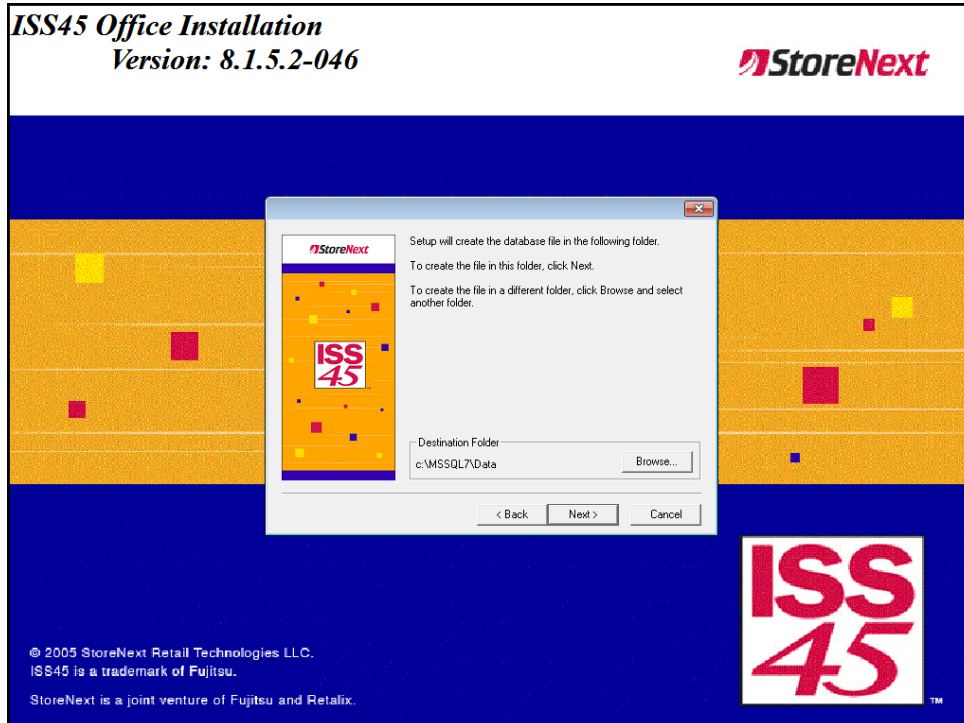


- 7 Select appropriate Report Format (default is Letter) and click **Next**.



Note:

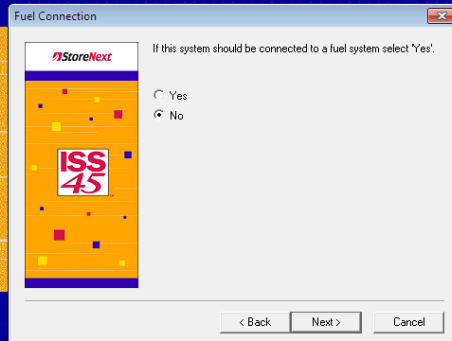
The install path will default to the location below for the Front Office database.




- 8 Accept the default location or browse to where SQL is installed and click **Next**.

ISS45 Office Installation
Version: 8.1.5.2-046

 **StoreNext**



Fuel Connection

 If this system should be connected to a fuel system select 'Yes'.

Yes
 No

< Back Next > Cancel

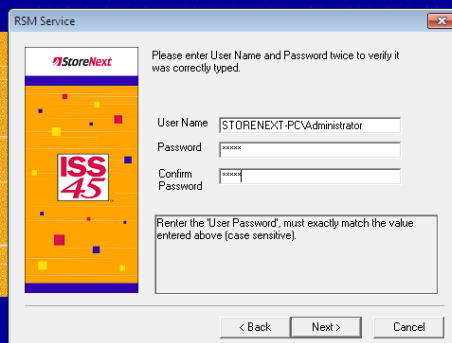
© 2005 StoreNext Retail Technologies LLC.
ISS45 is a trademark of Fujitsu.
StoreNext is a joint venture of Fujitsu and Retalix.

**ISS
45**


- 9 Select the appropriate answer for Fuel in System and click **Next**.

ISS45 Office Installation
Version: 8.1.5.2-046

 **StoreNext**



RSM Service

 Please enter User Name and Password twice to verify it was correctly typed.

User Name:

Password:

Confirm Password:

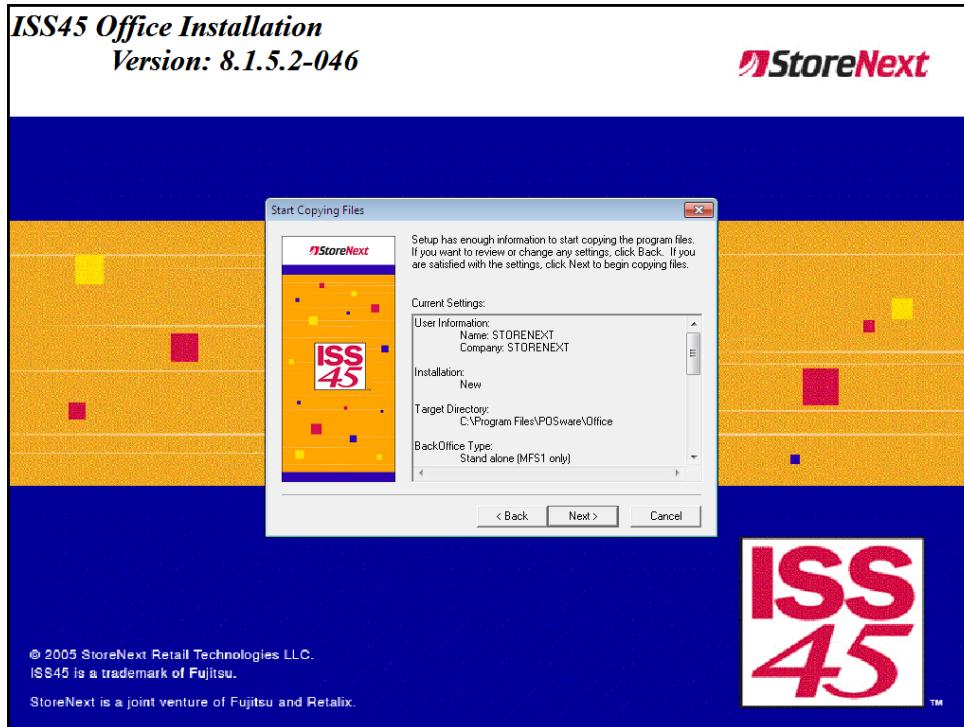
Enter the 'User Password', must exactly match the value entered above (case sensitive).

< Back Next > Cancel

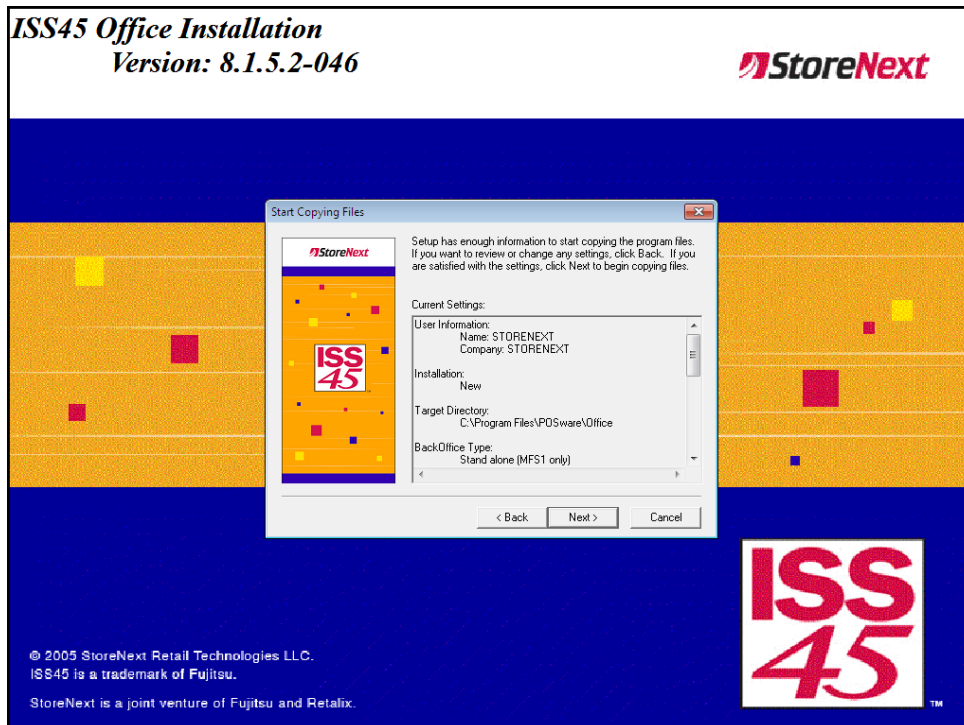
© 2005 StoreNext Retail Technologies LLC.
ISS45 is a trademark of Fujitsu.
StoreNext is a joint venture of Fujitsu and Retalix.

**ISS
45**

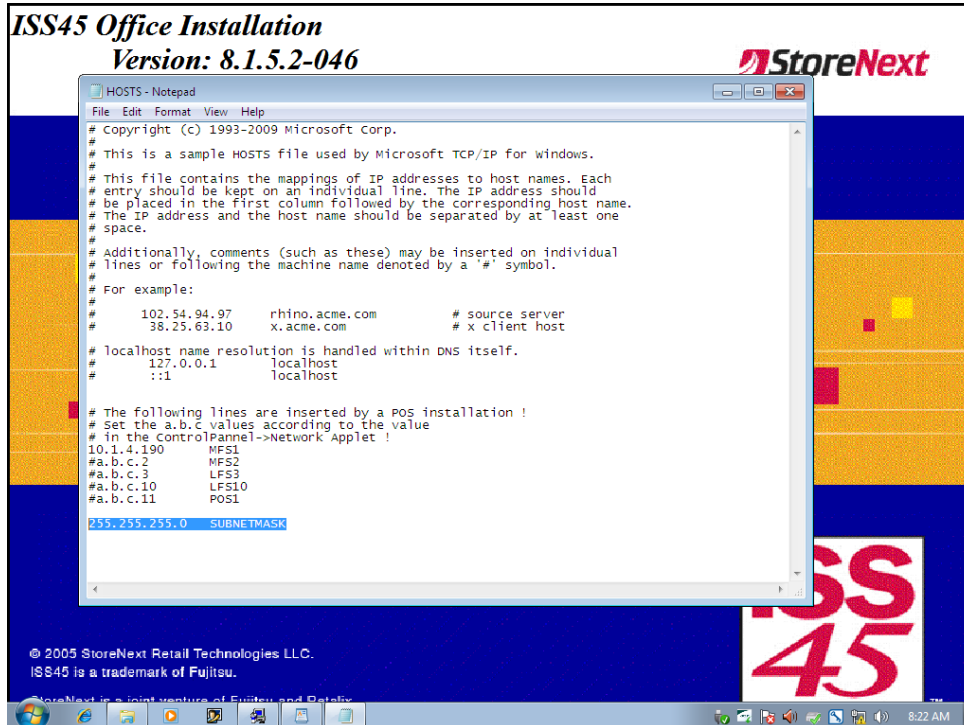
- 10 Enter and confirm Password for Administrator User and click **Next**.



- 11 Click **Next** to proceed (or **Back** to make any changes).



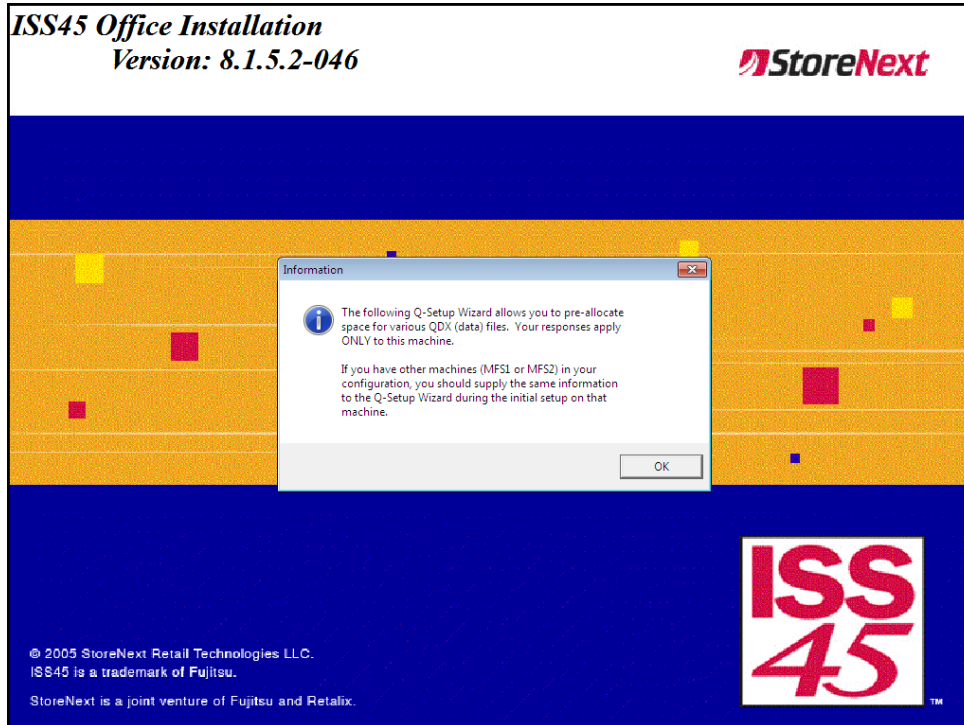
12 Click Next.



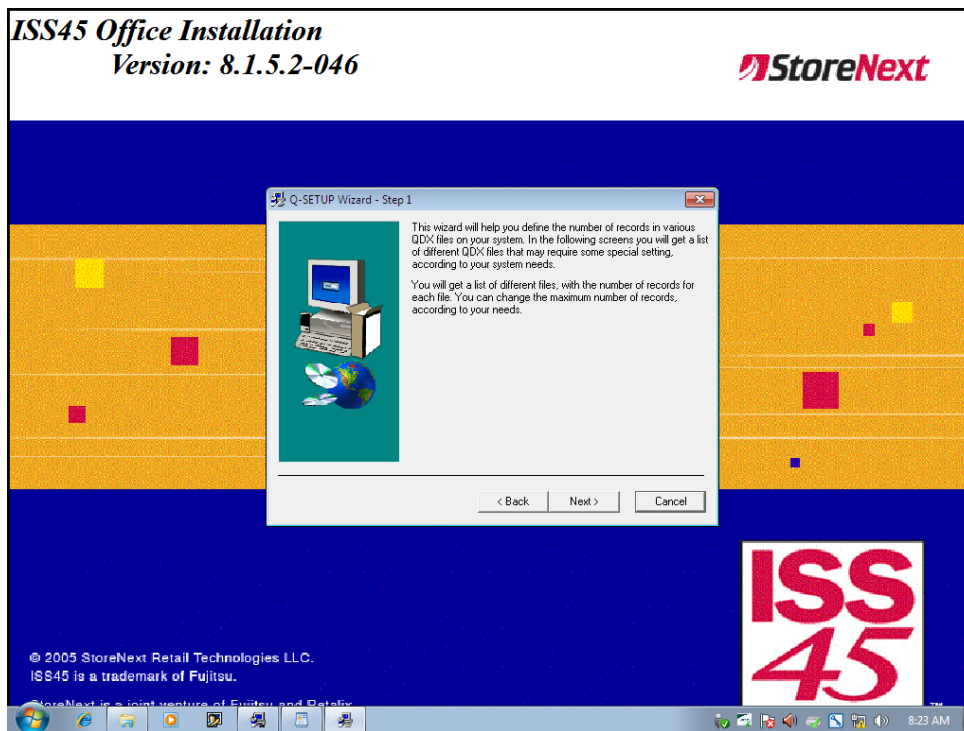
- 13 Edit the necessary lines, then save and close the Hosts file. Be sure to remove the # sign from the beginning of the SUBNETMASK entry (or services will not start after a reboot of MFS1).



14 Click **OK** to proceed.



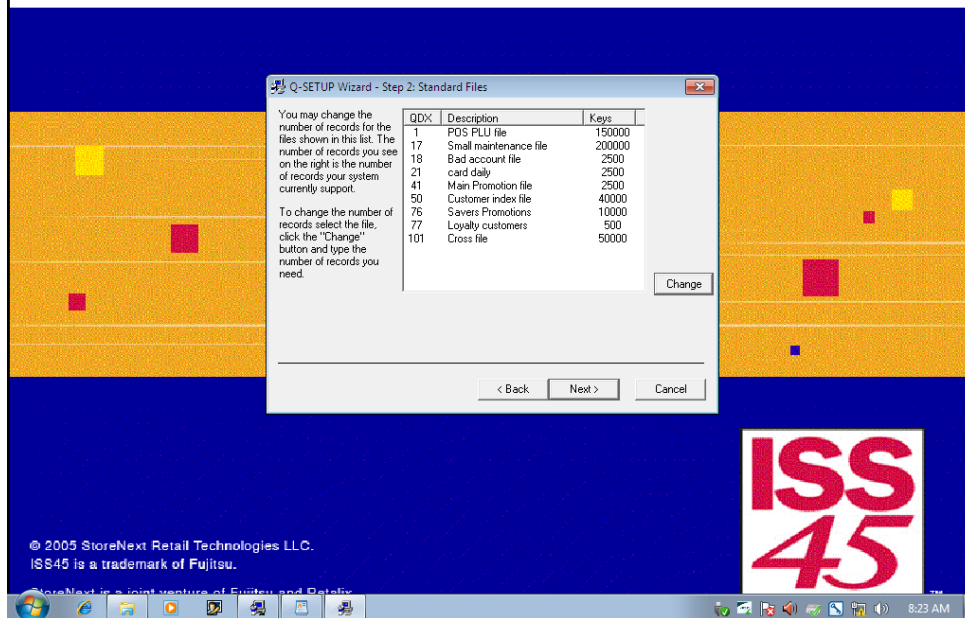
15 Click **Next** to proceed.



16 Click **Next** to proceed.

ISS45 Office Installation

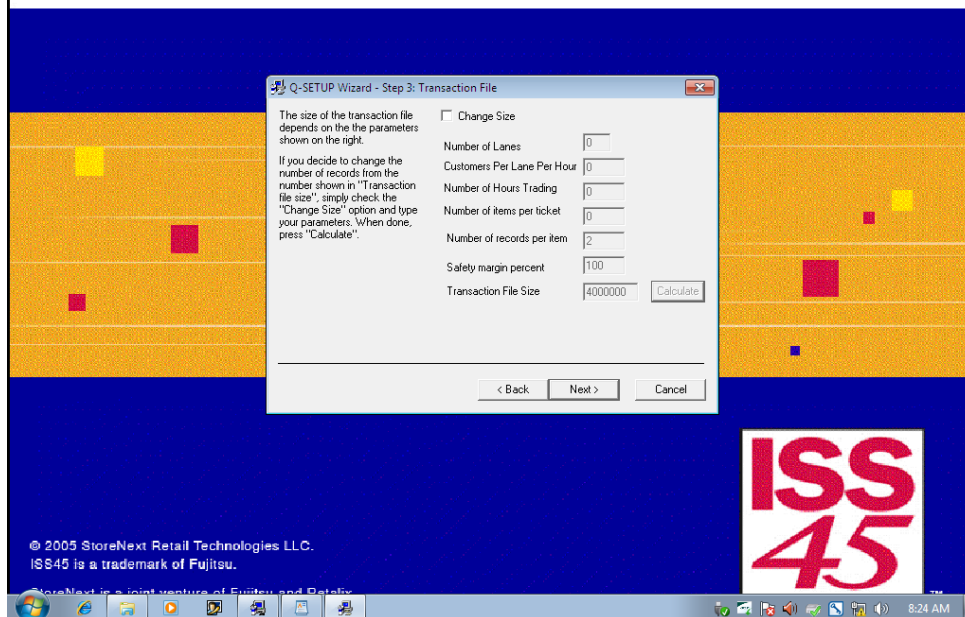
Version: 8.1.5.2-046



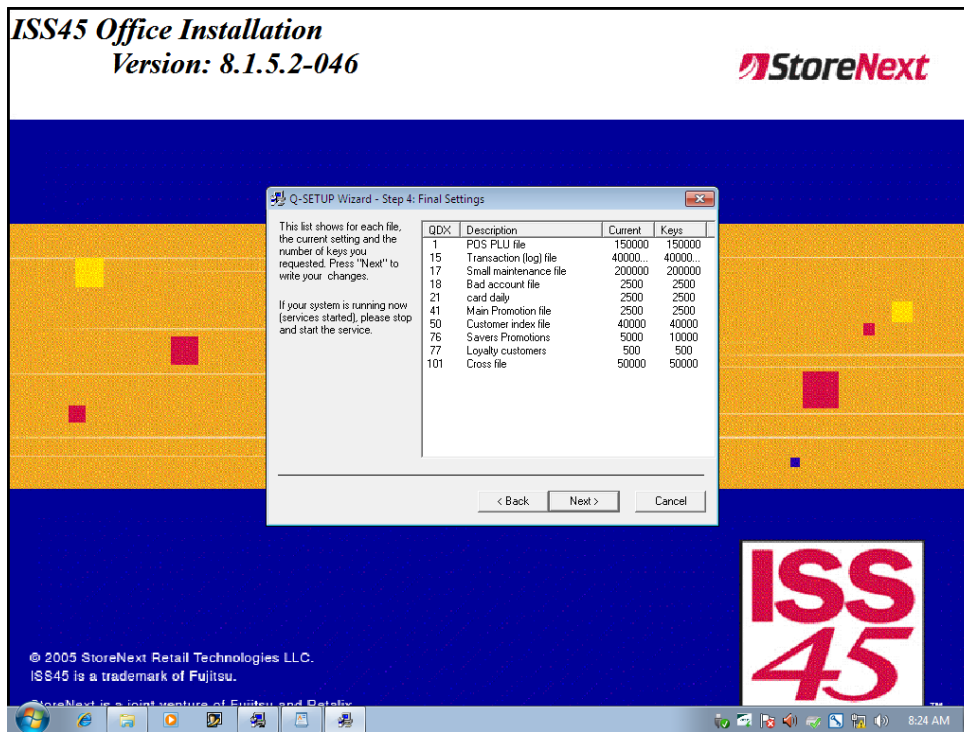
- 17 Click on Change to resize any of the qdx files or click **Next** to proceed.

ISS45 Office Installation

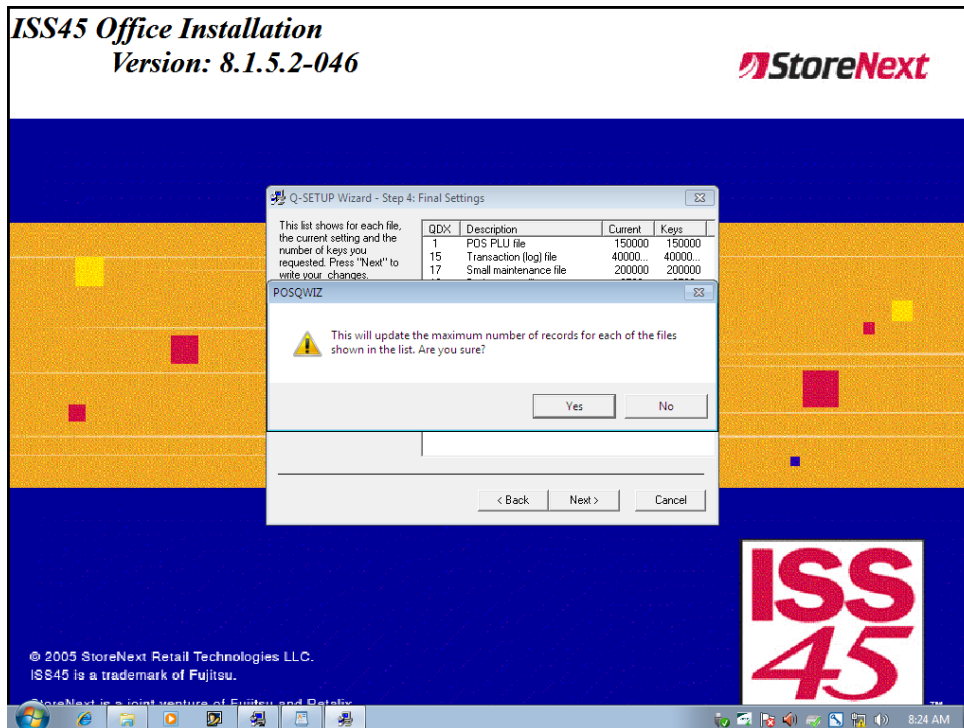
Version: 8.1.5.2-046



18 Click **Next** to proceed.

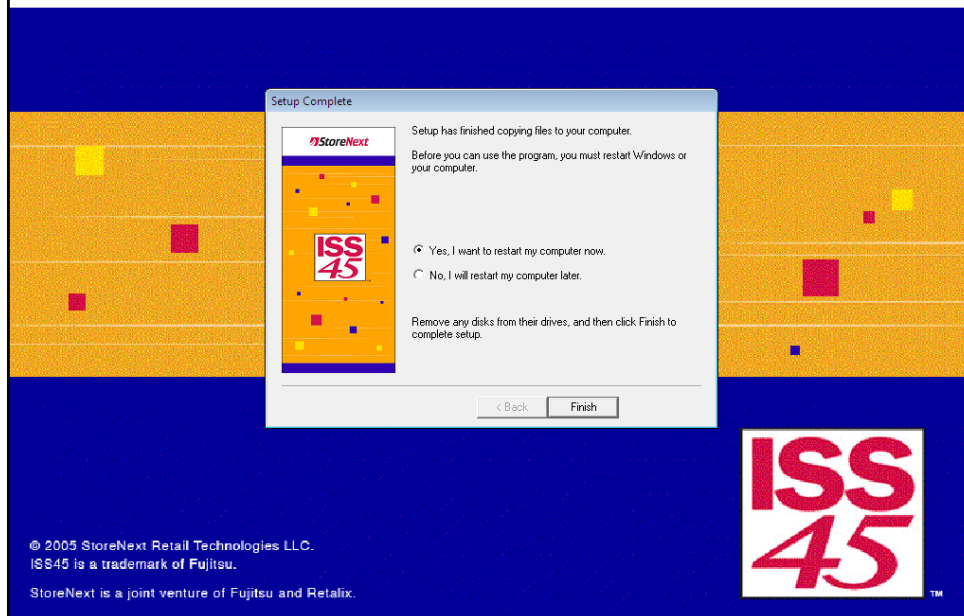


19 Click **Next** to proceed.



20 Click **Yes** to proceed.

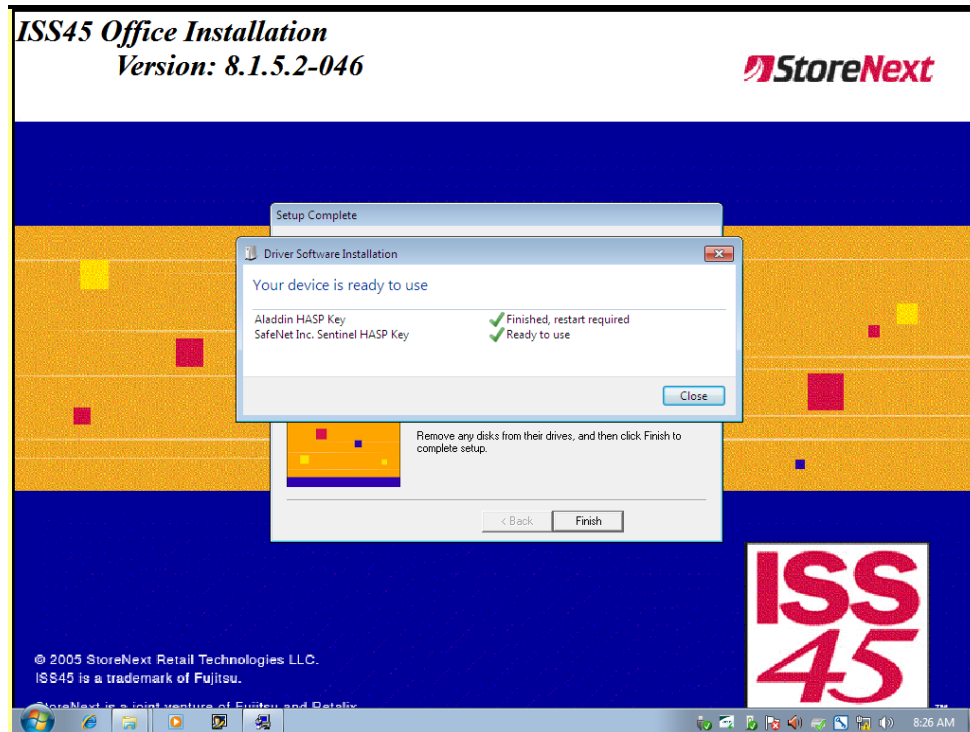
ISS45 Office Installation Version: 8.1.5.2-046



- 21 Click **Finish** to reboot computer immediately (or select No and click Finish to reboot manually at a later time).
The HASP Plug may now be installed.

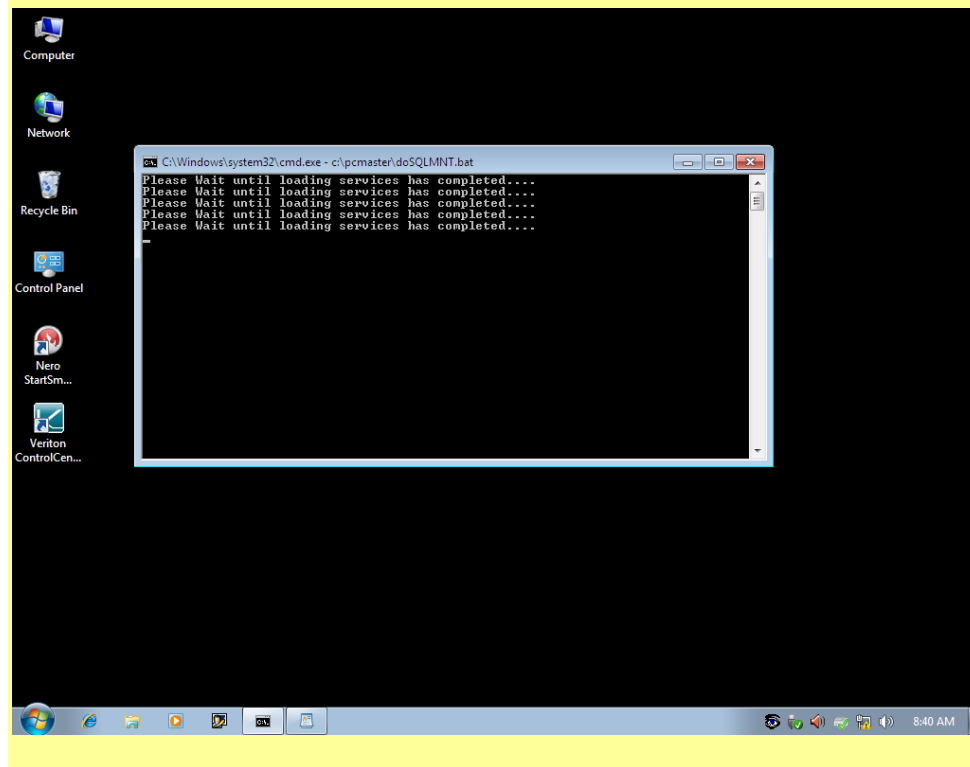
Note:

The following screen will not be displayed in the active window but will be minimized in the Sys Tray prior to rebooting and shows the installed Hasp Plug devices. Windows 7 with SQL 2008 requires newer Sentinel SafeNet drivers be installed for the USB Hasp Key while Windows XP with SQL 2000 requires the older Aladdin drivers:

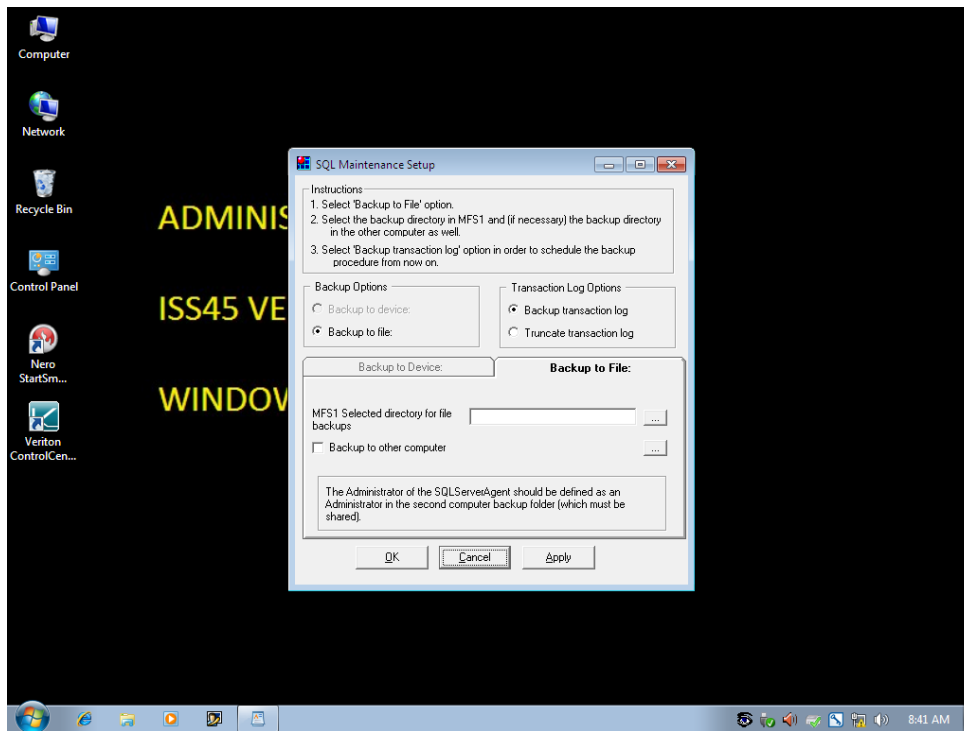


Note:

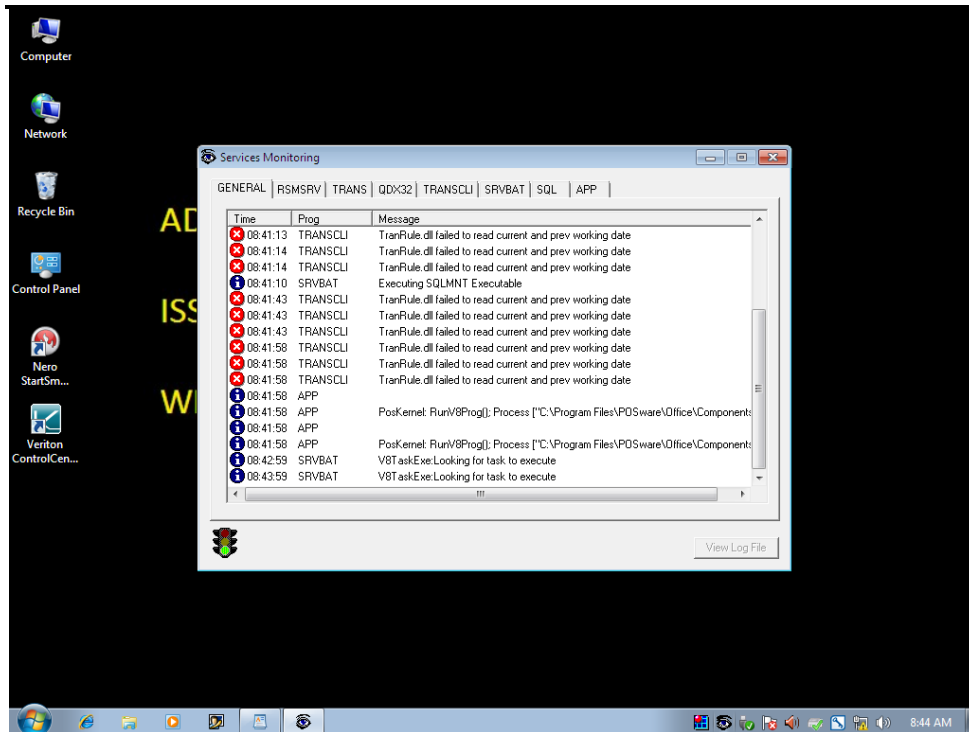
The installation of SQLMNT has been modified from previous versions of ISS45 and the following screen will be running minimized on the bottom of the screen following the reboot. Once the SQLMNT application has been configured and saved this screen will close by itself:



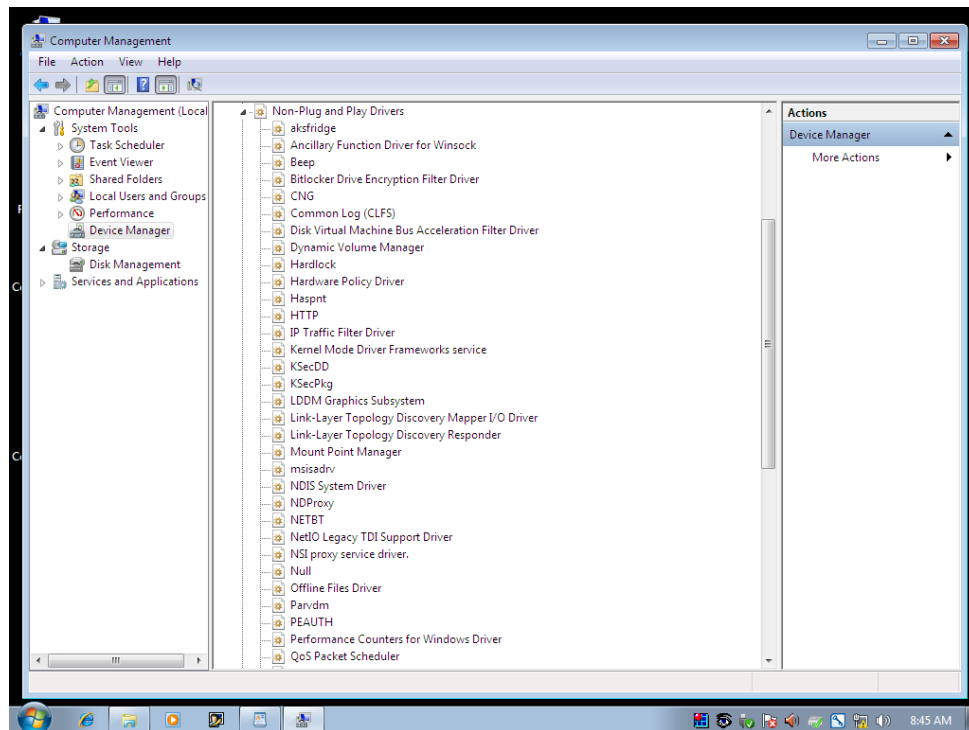
- 22 This screen below will display following the reboot. Define the Transaction Log options and define the primary database backup location then click on **Apply**.



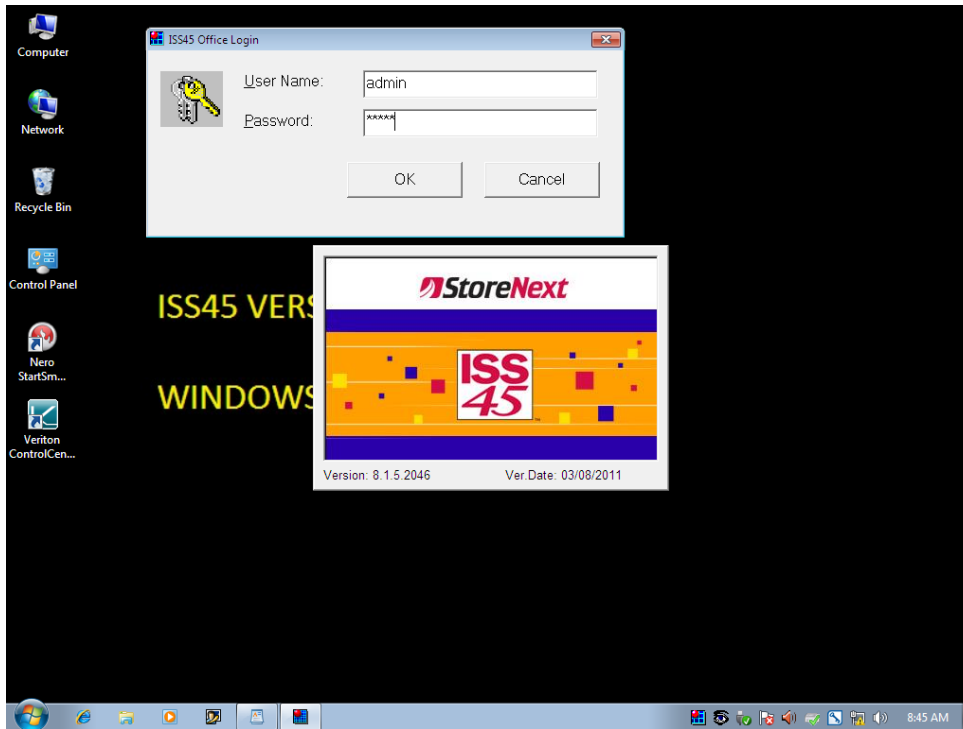
- 23 Click on **Cancel** to proceed.
- 24 Open the POS_SRV_Monitor (Eye) to verify services have started and the traffic light icon is Green. The TranRule.dll failed errors are normal and will be displayed until the first EOD is run. Running the EOD sets the current and previous working dates



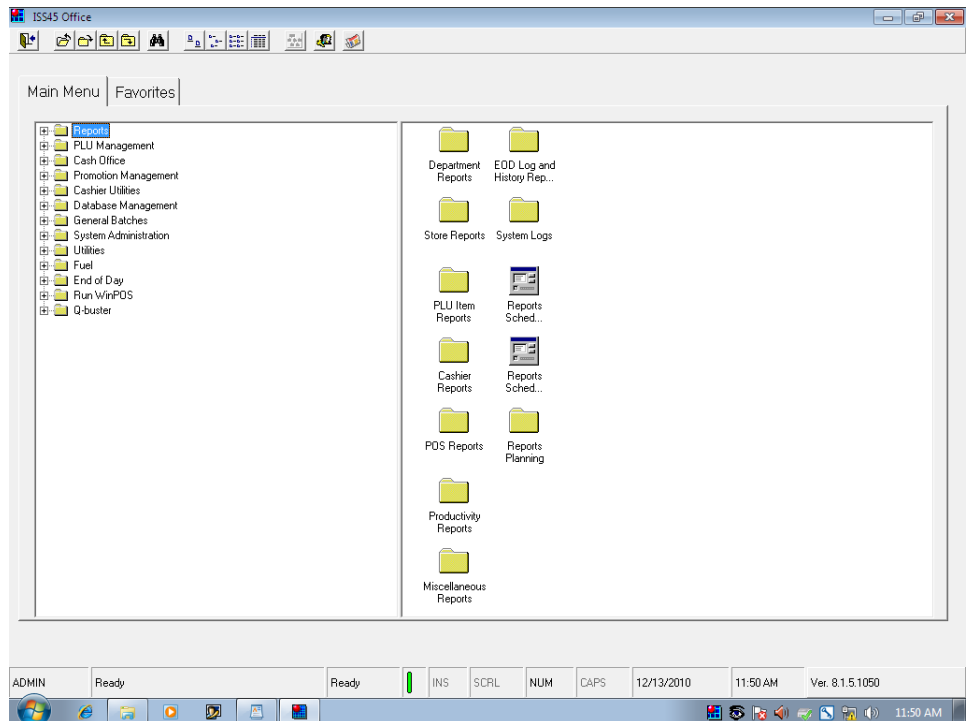
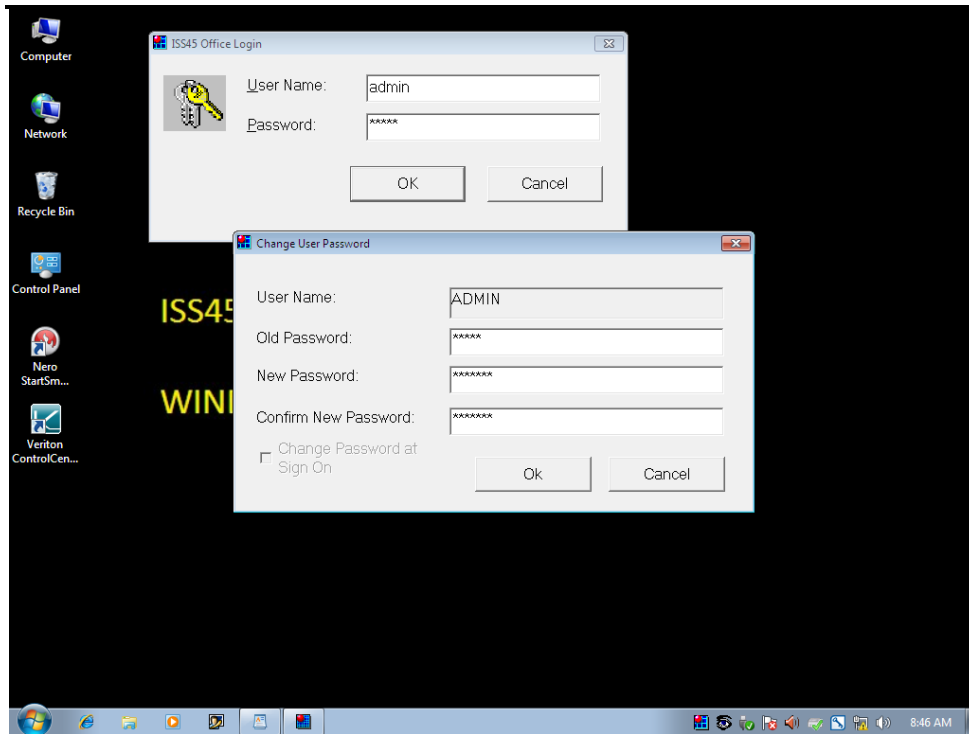
25 The screen below can be accessed from the Device Manager by selecting View and then Show Hidden Devices. The Haspnt device is required by RSMSSRV before services will start



- 26 During a new install the only User defined for Front Office is “admin” with a default password of “BBOEY”. Sign into Front Office with this user and password (case sensitive).



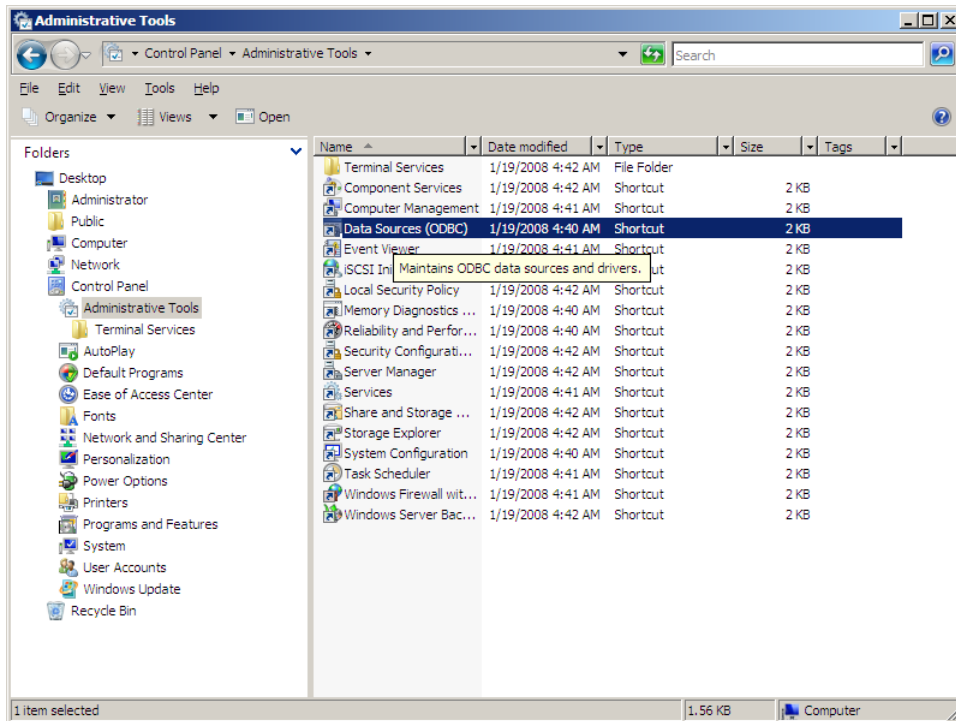
- 27 The application will require the password be changed to one that is at least 7 characters with at least one number and one letter. Enter in the old password (BBOEY) then enter and confirm a new password. Be sure to document this password as it is now encrypted in the database and can no longer be viewed through SQL.



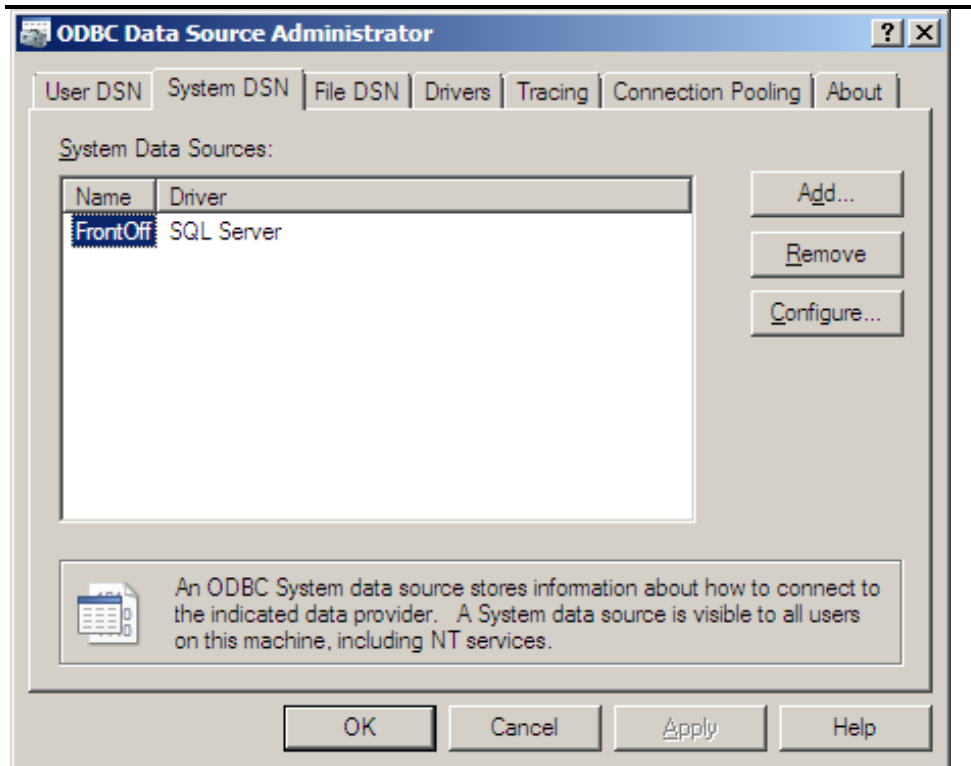
Note:

It is recommended that the ODBC connection to the FrontOff database be changed to increase the Long Query Time from 30,000 to 60,000 milliseconds. This will reduce the possibility of SQL Time Out errors when long running queries are performed against the database. Follow the steps outlined below to implement this change.

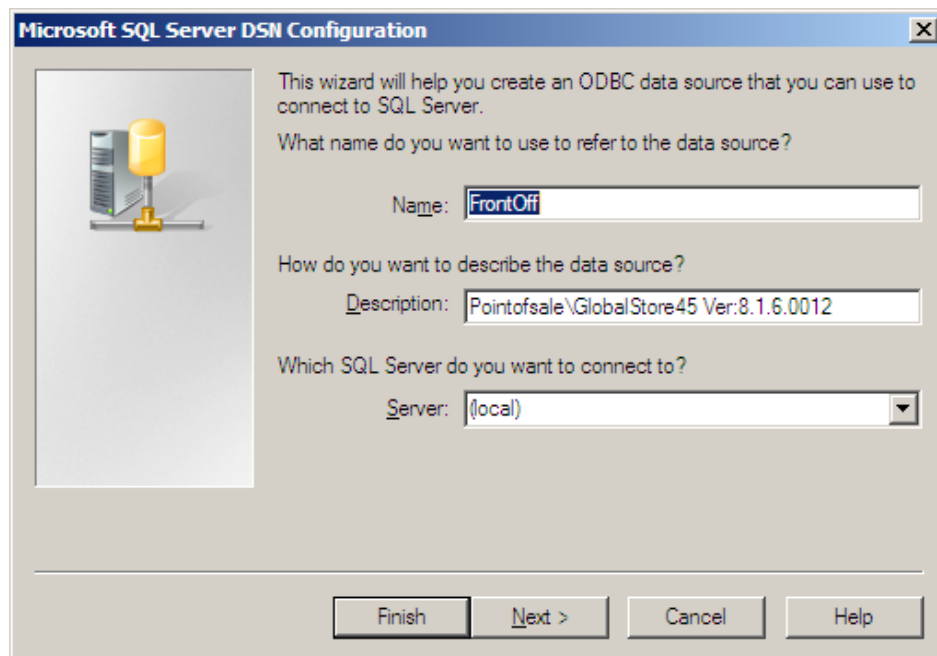
28 Open Data Sources (ODBC) from Administrative Tools.



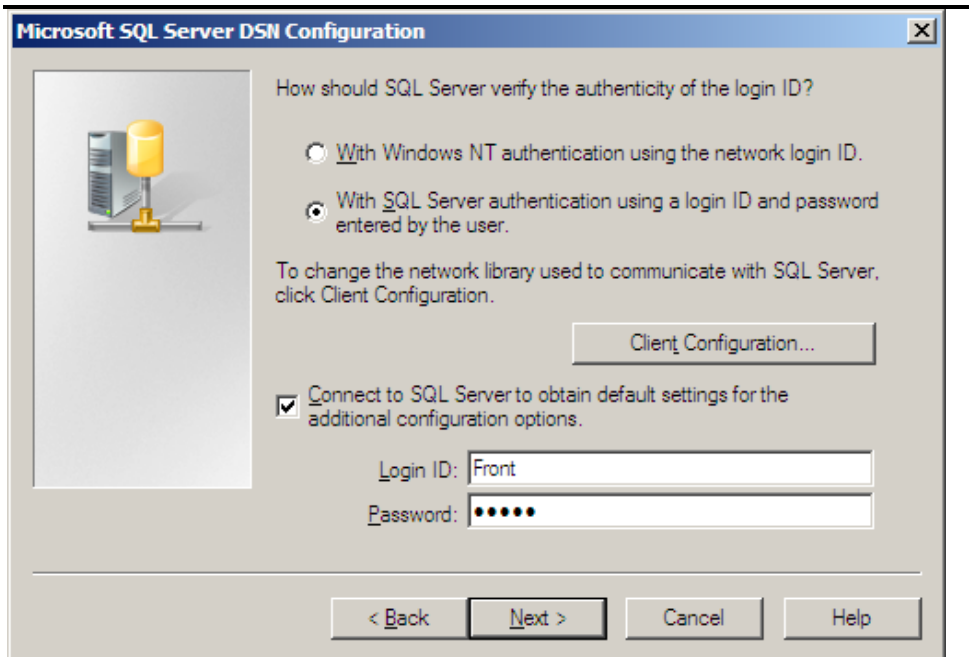
29 Click on the System DSN Tab, highlight FrontOff, and click on **Configure**.



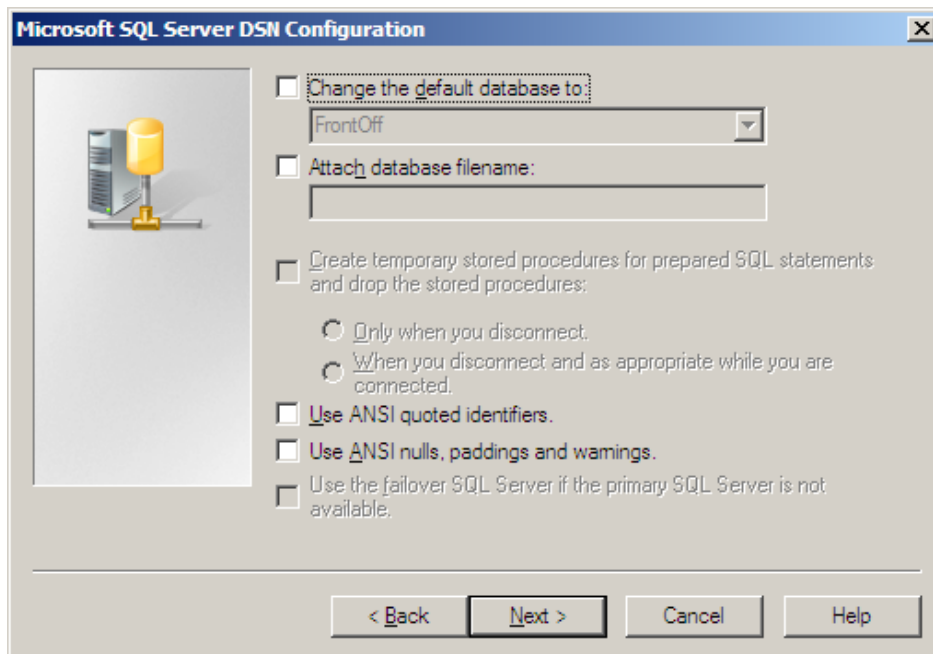
30 Accept defaults and click **Next**.



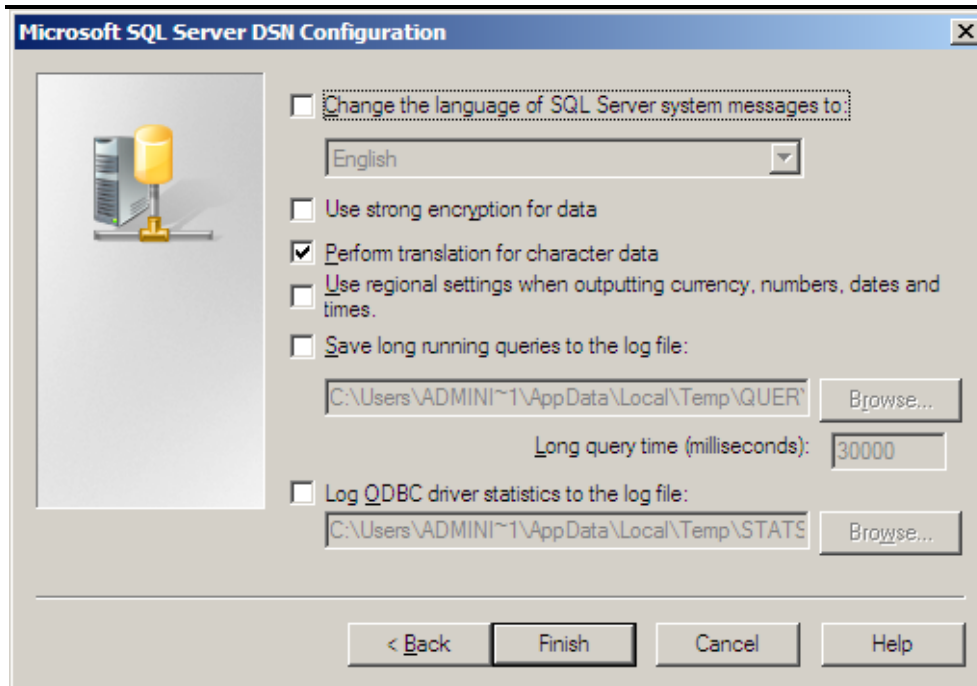
31 Accept defaults and click **Next**.



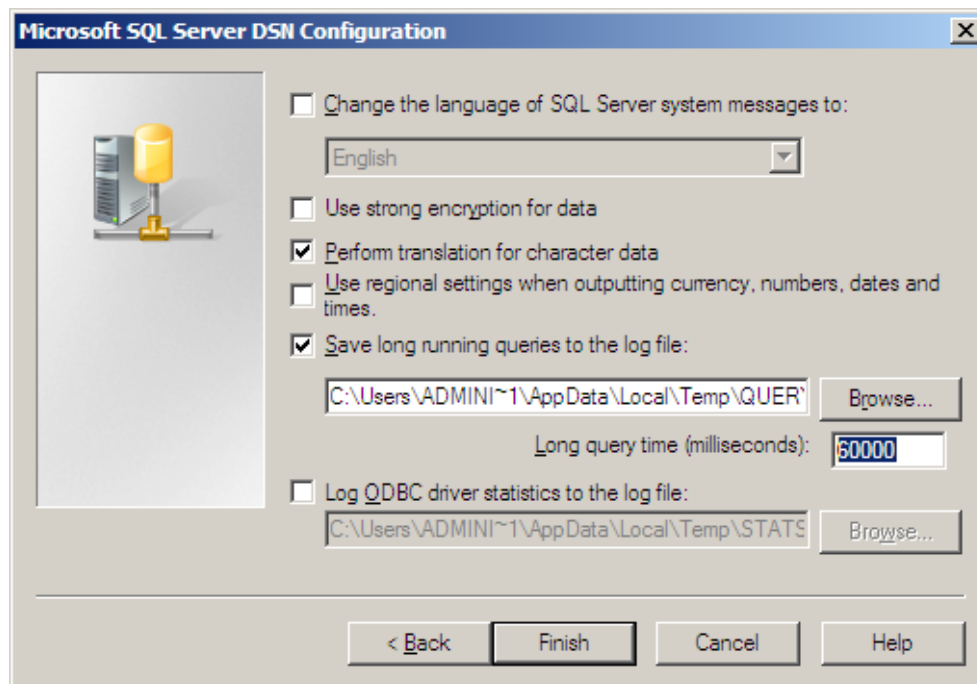
- 32 Select **With SQL Server authentication using a login ID and password entered by the user** and enter password **Front** (case sensitive).



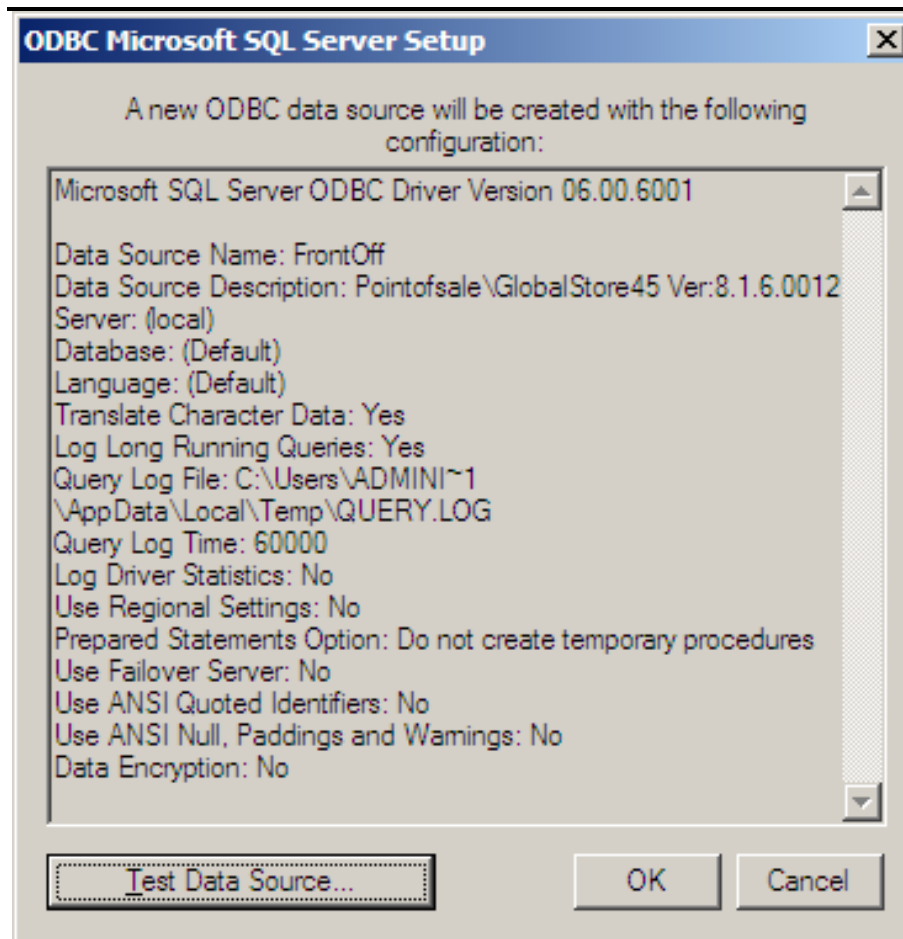
- 33 Click **Next**.



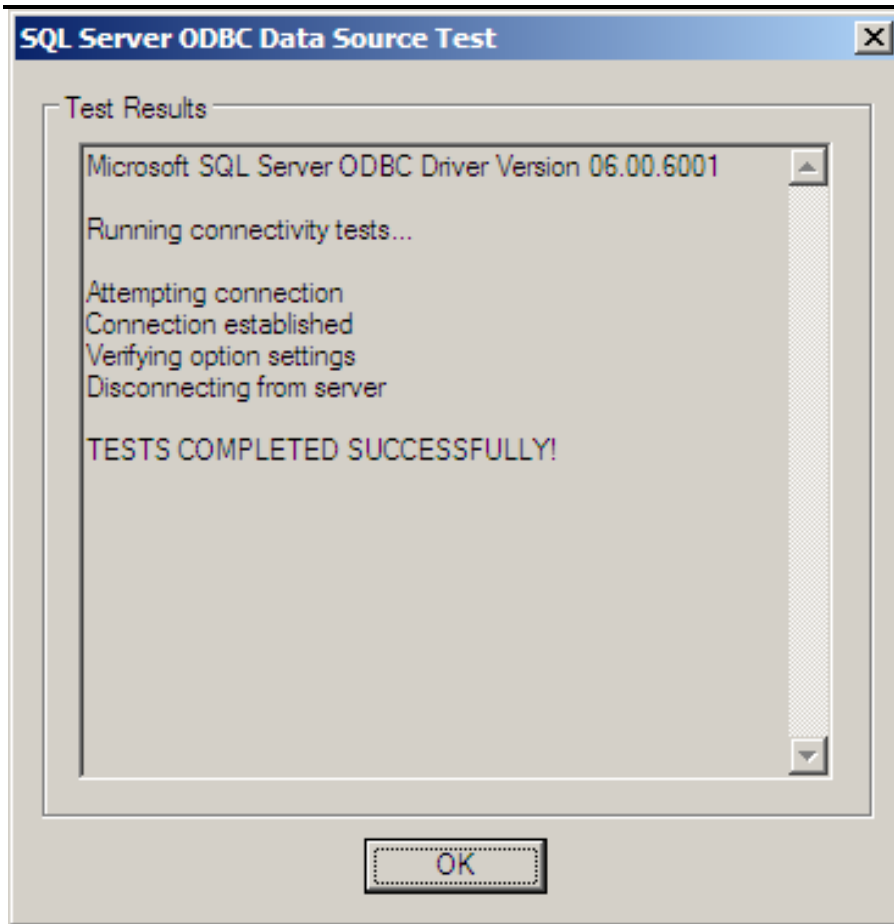
- 34 Select **Save long running queries to the log file** and change the 30,000 value to 60,000.



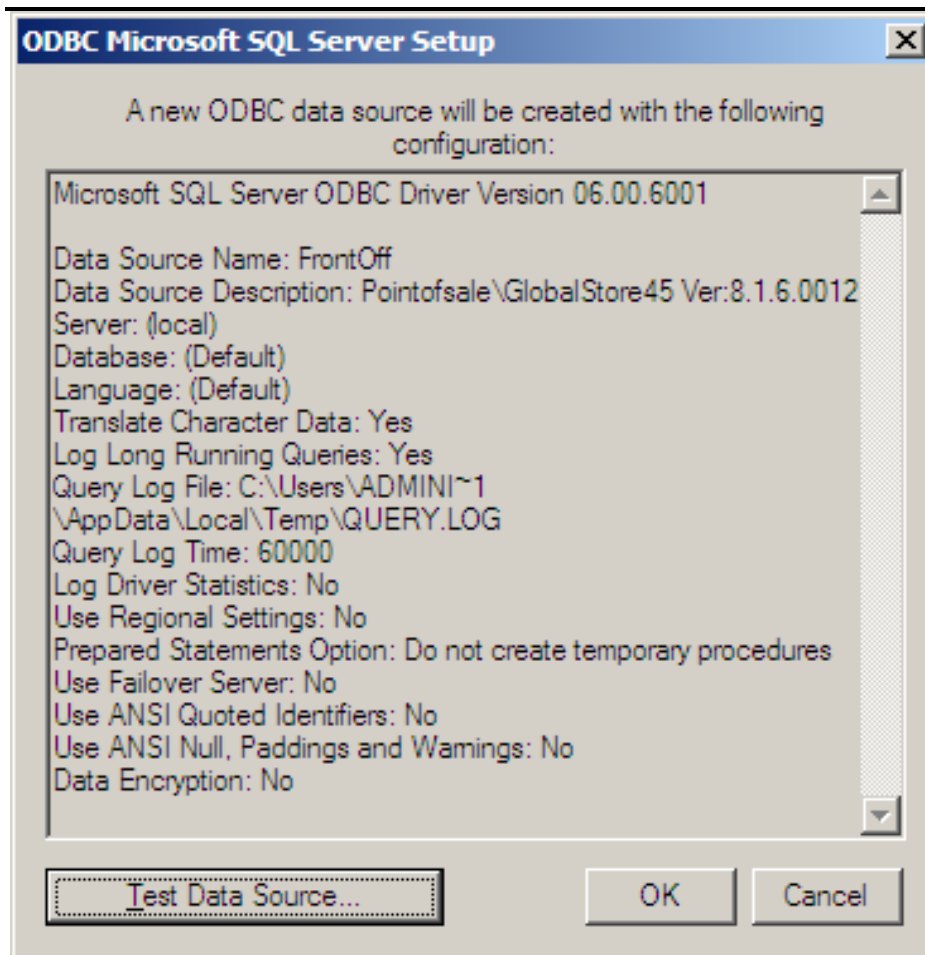
- 35 Click **Finish** when done.



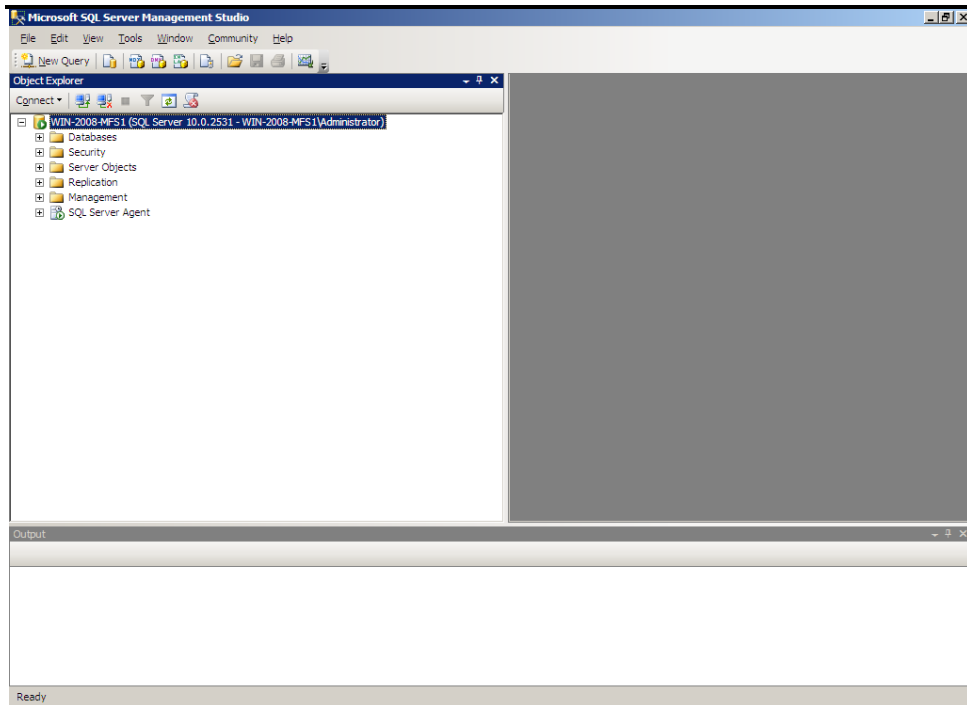
36 Click on **Test Data Source**.



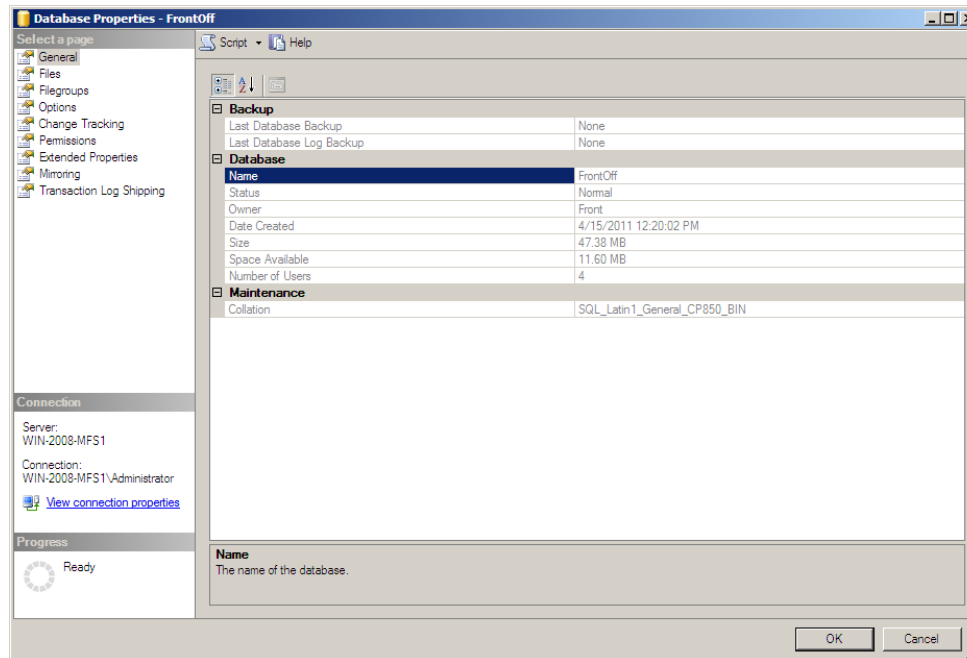
37 Click **OK**.



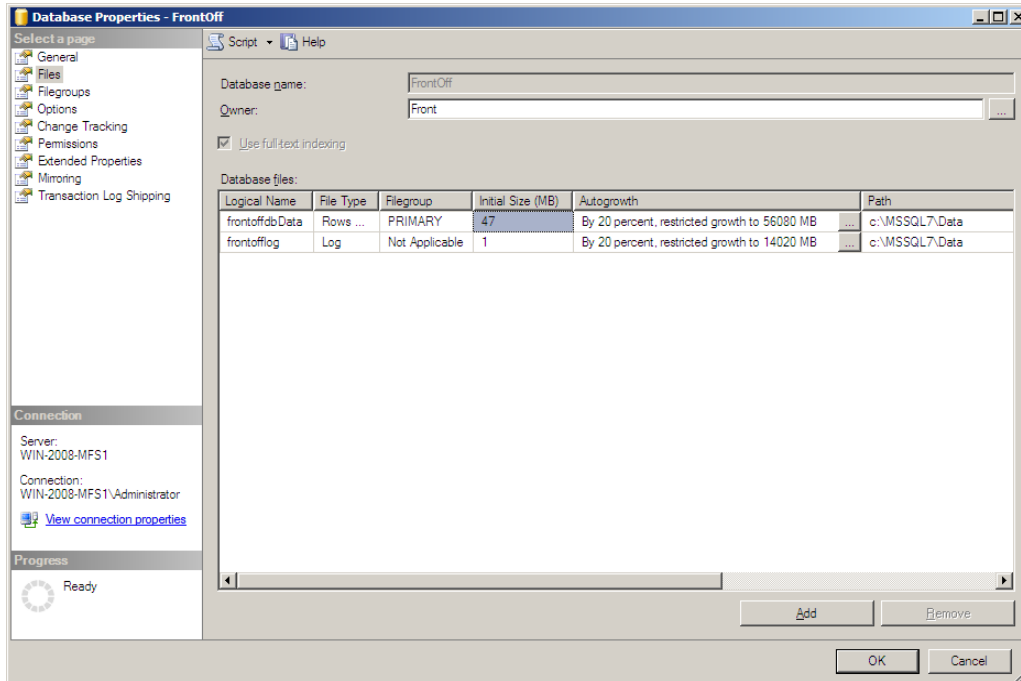
- 38 Click **Cancel**.
- 39 It is recommended that the properties for the FrontOff database and transaction log be changed following the installation of Front Office to allow for future growth.
- 40 Open the Microsoft SQL Server Management Studio as shown below:

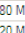


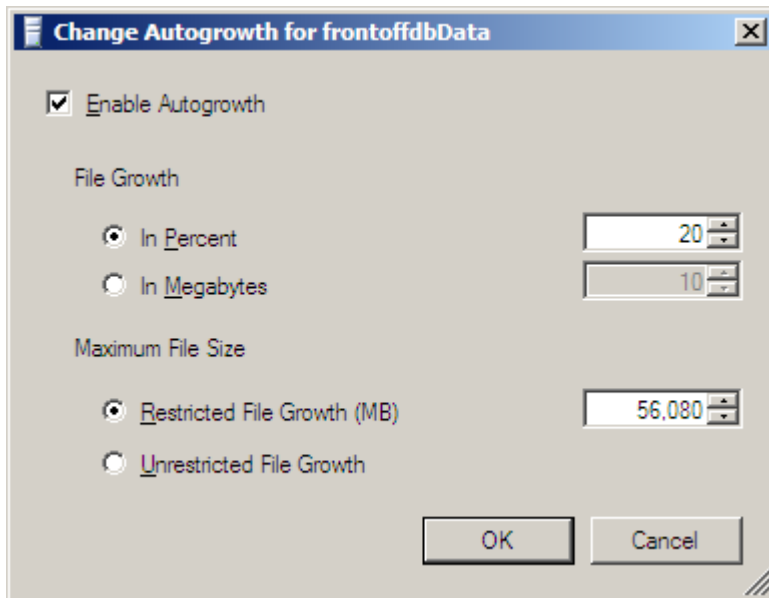
- 41 Open the Databases Folder, right click on the FrontOff database and select **Properties**.



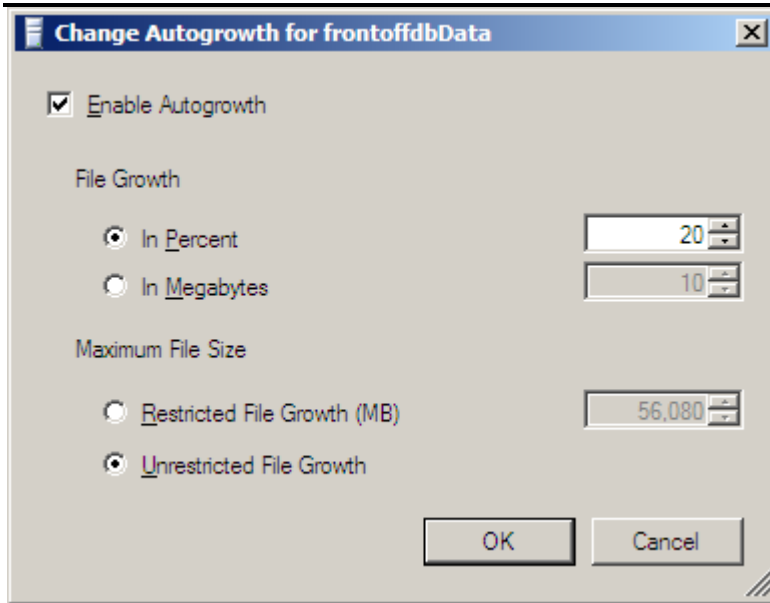
- 42 Click on **Files**.



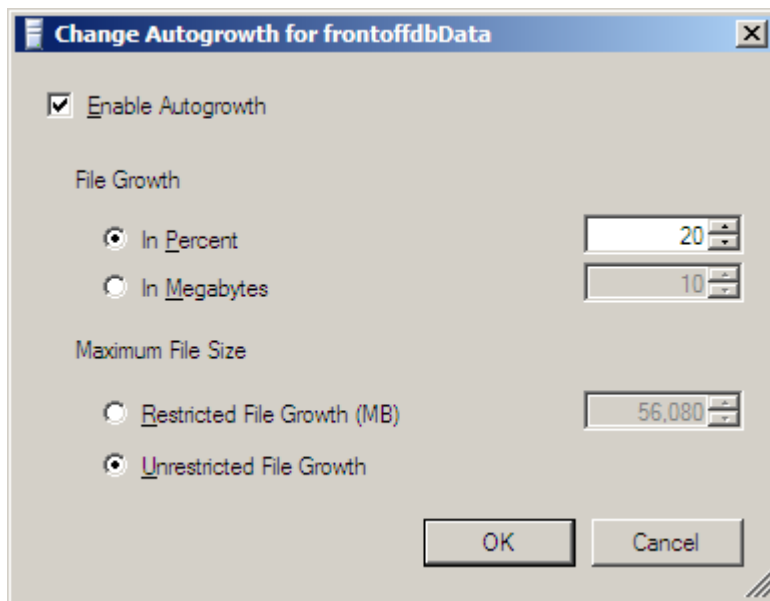
- 43 There are two entries, one for frontoffdbData and one for frontofflog. Both entries are set for Autogrowth by 20 percent but are restricted by default. The following changes will remove the size restrictions. Click on the Ellipse Box  for the frontoffdbData entry.




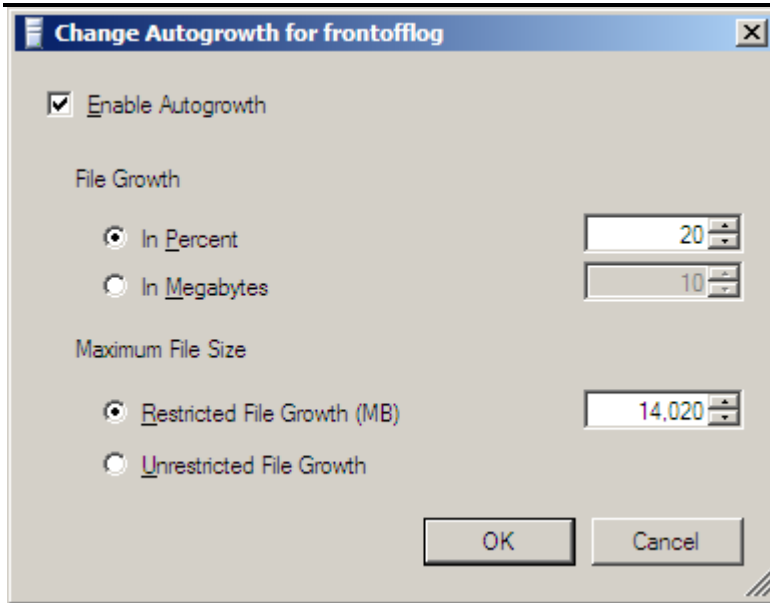
- 44 Change the Maximum File Size setting from Restricted File Growth to **Unrestricted File Growth**.



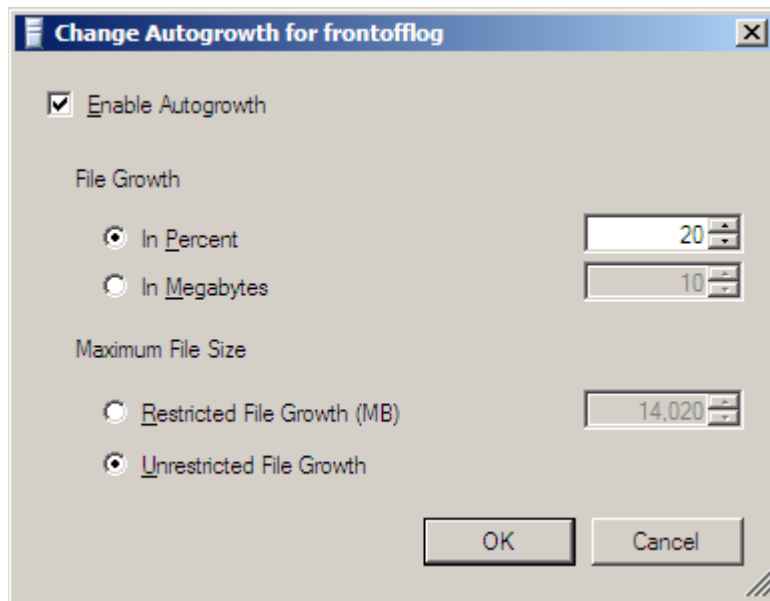
45 Click **OK**.



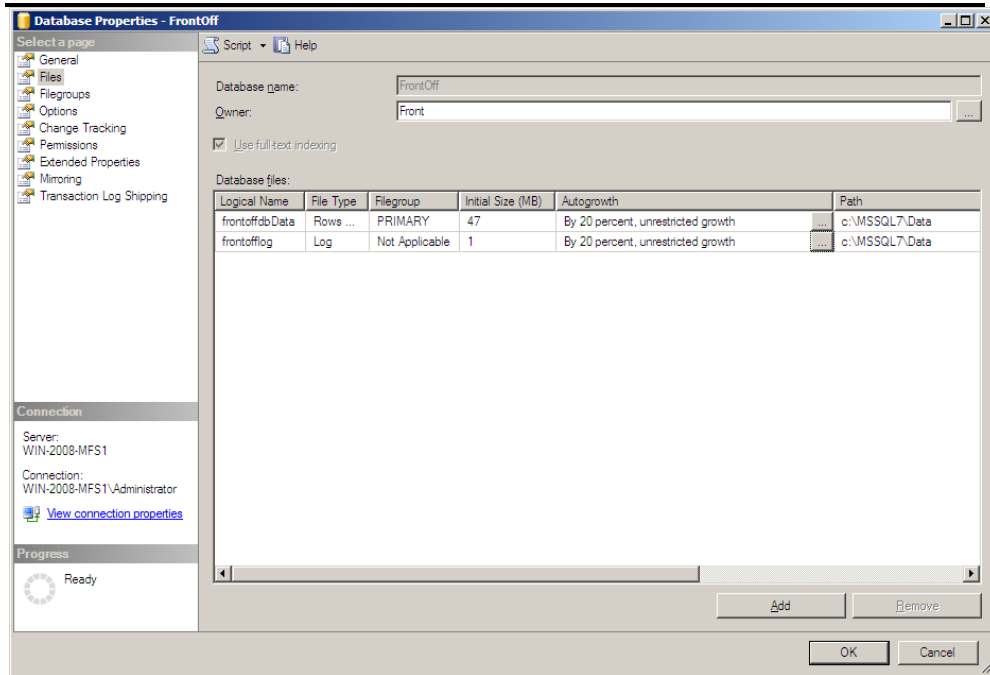
46 Repeat the process for the frontofflog entry. Click on the Ellipse Box  for the frontofflog entry.



- 47 Change the Maximum File Size setting from Restricted File Growth to **Unrestricted File Growth**.



- 48 The settings should now be changed.



49 Click **OK**.



© NCR Corporation, 2015

NCR endeavors to ensure that the information in this document is correct and fairly stated but does not accept liability for any error or omission.

The development of NCR products and services is continuous and published information may not be up to date. It is important to check the current position with NCR. This document is not part of a contract or license, save insofar as may be expressly agreed.

NCR Corporation
2651 Satellite Blvd.
Duluth, GA 30096

P/N 89000840
PIN 45001/032