



■ *Release Notes & What's New*

■ *ISS45 8.1.8.0-080*



ISS45 Release Notes

Date of Issue	Product ID Num.	Part Number	Brief Description
January 2005	45001/081	89000195	Initial Release
Other Releases: 89000233, 89000263, 89000263, 89000308, 89000308, 89000401, 89000417, 89000416, 89000480, 89000490, 89000508, 89000521, 89000532, 89000547, 89000573, 89000583, 89000587, 89000590, 89000613, 89000641, 89000658, 89000683, 89000692, 89000693, 89000712, 89000720, 89000734, 89000737, 89000740, 89000747, 89000748, 89000758, 89000767, 89000782, 89000791, 89000792, 89000793, 89000794			
December 2013	45001/081	89000796	8.1.7.0-090 Release
May 2014	45001/081	89000812	8.1.7.0-120 Release
October 2014	45001/081	89000815	8.1.7.0-150 Release
February 2015	45001/081	89000822	8.1.7.0-160 Release
March 2015	45001/081	89000825	8.1.7.0-170 Release
June 2015	45001/081	89000833	8.1.8.0-050 Release
June 2015	45001/081	89000854	8.1.7.0-190 Release
September 2015	45001/081	89000861	8.1.8.0-050 Release Issue 2
September 2015	45001/081	89000862	8.1.8.0-060 Release
October 2015	45001/081	89000863	8.1.8.0-070 Release
December 2015	45001/081	89000872	8.1.8.0-080 Release

**©Copyright NCR Corporation 1995-2015
All rights reserved**

This publication is protected by federal copyright law. This document and its contents are the proprietary, confidential information and property of NCR Corporation ("NCR"). Unauthorized disclosure, reproduction, distribution or use of this document and/or its contents in any form is strictly prohibited. No part of this publication may be reproduced or transmitted into any human or computer language in any form or by any means, stored in a retrieval system, transmitted, redistributed, translated or disclosed to third parties, or de-compiled in any way including, but not limited to, photocopy, photograph, electronic, mechanical, magnetic or manual without the express written permission of NCR or its licensors, if any. This document, notwithstanding the above, may be distributed in electronic or printed form by NCR to personnel who are employed by either (a) a licensee and end user of the subject system of this document or (b) personnel from an authorized NCR Channel Partner or Solution Provider of the subject system of this document. All copies of this document so distributed and/or so authorized, shall contain a full copy of this copyright notice.

NCR has prepared this document as a guide to the proper installation, operation, customization and/or maintenance of NCR products. The drawings and specifications contained herein are the property of NCR and/or its licensors.

NCR endeavors to ensure that the information in this document is correct and fairly stated but does not accept liability for any error or omission. NCR makes no representation or warranties with respect to the contents hereof, and specifically disclaims any implied warranties of merchantability or fitness for a particular purpose or non-infringement. No commitments by NCR or its suppliers are made by or from this documentation which is provided for information only.

Development of NCR products and documentation is continuous: NCR reserves the right to revise this publication and to make changes at any time to the contents hereof or to the products herein described or discussed without notice and without any obligation for NCR to notify any person or organization of such revision or changes. Information published in this document will likely be superseded, and it is recommended that users regularly check for updates and newer versions.

The trademarks NCR, Retailix, StoreNext, ISS45, ScanMaster, R10, ACS, PocketOffice, RPO, RBO, ABO, Connected Payments, ServerEPS, Connected Services, Connected Loyalty, WinEPS and all other NCR product names are registered trademarks or trademarks of NCR; all other trademarks or registered trademarks are the property of their respective owners. Third-party products, services, or company names referenced in this document may be trademarked or copyrighted by their respective owners, and are for identification purposes only. Copyrights, trademarks and license agreements shall be governed and construed in accordance with the laws of the State of New York and the Federal Arbitration Act, and shall benefit NCR, its successors, and assigns.

Address comments and corrections regarding this document to:

Attn: Software Program Director
NCR
797 Commonwealth Drive
Warrendale, PA 15086

Table of Contents

Table of Contents	i
Introduction	1
428982 – Barcode Programming Markdown Option	2
435135 – Single Manager Override at End of Transaction	12
Other Enhancements	14
Technical Reference Appendix	15
Out of Scope	15
Dependencies	16

Introduction

A few enhancements were recently made to the Retailix ISS45 system. The changes are reflected in the accompanying ISS45 8.1.8.0-080 software. The Change Request Document (CRD) numbers assigned to the enhancements are listed in the description heading. Following the change descriptions are an abbreviation of the ISS45 areas affected:

(FO) – Front Office

(Sys) – System

The enhancements explained in the following pages are not included in the latest Office Users Guide, WinPOS User Guide or Office Administrator's Reference. If you have any questions regarding this release, please contact Retailix Support.

Note:

ISS45 Release 8.1.6.0-100 and higher will require a change to the HASP key for Loyalty Sites. The ISS45 system will NOT work with Retailix Loyalty unless this setting is on.

Note:

ISS45 Release 8.1.7.0-150 and higher requires the S&H / YouTech / Prologic option on the HASP be set. The ISS45 system will not work with the S&H / YouTech / Prologic system unless the setting is on.

Note:

ISS45 Release 8.1.7.0-150 and higher requires the Self-Checkout option on the HASP be set. The ISS45 system will not work with any Self-Checkout system unless the setting is on.

428982 – Barcode Programming Markdown Option

This feature provides a new barcode type that can be scanned at the POS to sell an item at a reduced price, overriding the price on file for that item. The PLU and new price for the item can be embedded in the barcode. The POS will then parse the barcode and sell the item as it would normally do for an item which has been manually overridden with a new price.

Front Office

A new Markdown barcode type has been added to the list of types in the Dropdown selection of the Barcode types in the Barcode programming maintenance screen. This Barcode Type will be saved as “34” in the BARCOD_DEF.BAR_TYP field

- This allows the user to select the new Markdown type as the barcode programming type
- Once the user selects the new barcode type, new corresponding fields will be displayed for the user to fill out in order to setup the markdown barcode.

Three new sets of fields have been added to the Basic Setup tab

- The Field Type fields 1-3 will contain a dropdown box populated with the following selection:
 - PLU Number (Type = 1)
 - Check Digit (Type = 2)
 - Item Unit Price (Type = 3)
- The Offset field for Field Types 1 - 3 will contain text boxes to populate with the offset values corresponding with the dropdown box selection.
- The Length Field for Field Types 1-3 will contain text boxes to populate with the length values corresponding with the dropdown box and offset value selections.
- Standard validation of existing fields will be performed as done in today's Barcode programming logic.

Barcode Prefix: 999888
Barcode Prefix To: 999888
Barcode Length: 25
Description: Markdown
Reference No.: 0
Barcode Type: Markdown

Basic Setup

Field Type 1: Item Unit Price
Field Type 2: Check Digit
Field Type 3: []

Offset: 0
Offset: 0
Offset: 0

Item Unit Price
PLU Number
Check Digit
Item Unit Price
Markdown

OK Cancel Apply

Field specifications:

Field Type 1-3 fields

The Field Type fields have been added to the Basic Setup tab on the Barcode Programming form. These fields will be populated with one of the new requested values mentioned above.

NOTE: The selected value for Field 1 should be the first field that appears in the barcode; the selected value for Field 2 should be the second field that appears in the barcode; and so on.

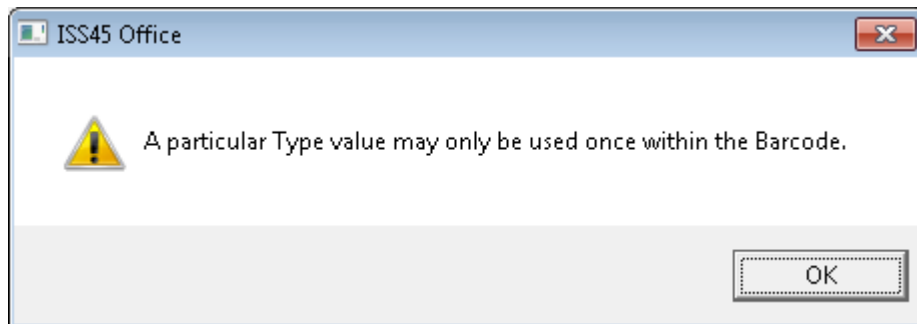
Type: Combo box

Default: Null (Blank)

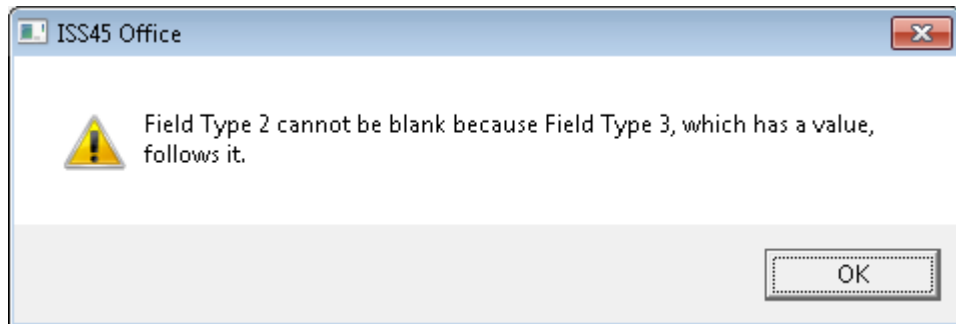
Valid values: Populate with any of the new requested values (If left blank, the value saved to the database is 0)

Send to QDX: Yes (QDX 135)

- When the record is saved, the selected value in this field will be saved to the corresponding Type field in the BARCOD_DEF table: RX_FLD1_TYP, RX_FLD2_TYP, and RX_FLD3_TYP.
- When the user clicks OK/Apply, the following validation will be performed on the Field Type fields:
 - The value in any one Field Type field cannot appear in another Field Type field. If the same value appears in more than one Field Type field, The following error message will be displayed; “A particular Field Type value may only be used once within the Barcode.”



- There may only be a blank Field Type after all fields in the barcode are populated. This means that there cannot be a blank Field Type followed by a Field Type with a value. For instance, if Field Type 3 is populated with a value, then Field Type 2 cannot be blank. If this situation occurs, the following error message will be displayed; “Field Type %1 cannot be blank because Field Type %2, which has a value, follows it.” %1 and %2 will be replaced with the actual Field Type numbers.



Offset fields

The Offset fields will be added to the Basic Setup tab on the Barcode Programming form. These fields will be populated with numeric values indicating at which position in the barcode each field starts. The first position in the barcode has a value of 1. An offset value of zero or blank means that this Field Type is not being used...

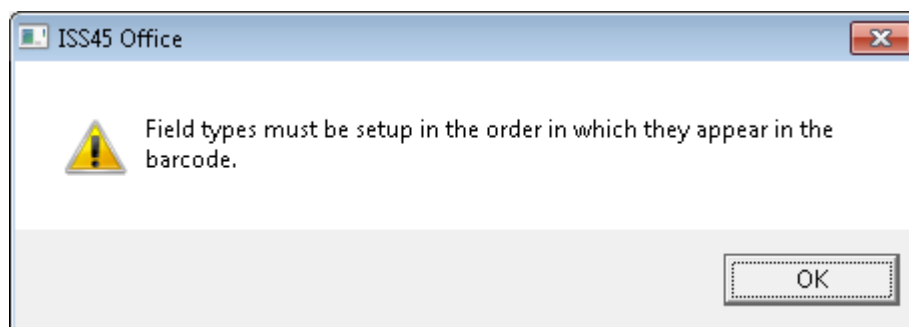
Type: Numeric

Default: Zero (0)

Valid values: 0 – 50

Send to QDX: Yes (QDX 135)

- When the user clicks OK/Apply, the following validation will be performed on the Offset fields:
- The Field Types must be setup in the order in which they appear in the barcode, which will be validated by ensuring the Offsets are in the proper order. This means that the Offset for Field Type 3 (if greater than zero) must be greater than the Offset for Field Type 2, which must be greater than the Offset for Field Type 1. If any of the Offsets are out of order, the following error message will be displayed; "Field Types must be setup in the order in which they appear in the barcode."



Length fields

The length fields have been added to the Basic Setup tab on the Barcode Programming form, which will be populated with numeric values indicating the length of each field within the barcode.

Type: Numeric

Default: Zero (0)

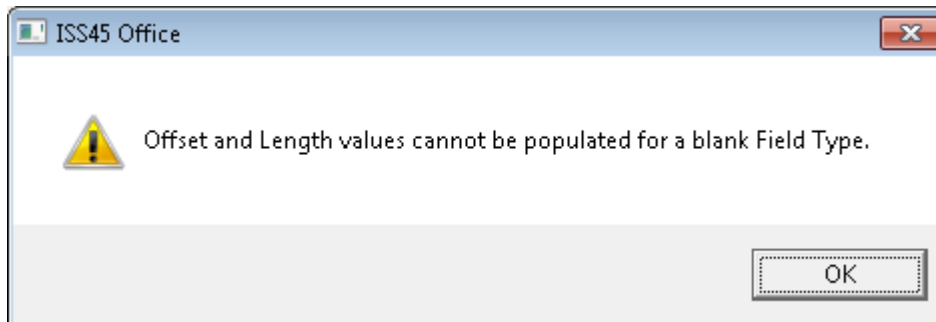
Valid values: 0 – 50

Send to QDX: Yes (QDX 135)

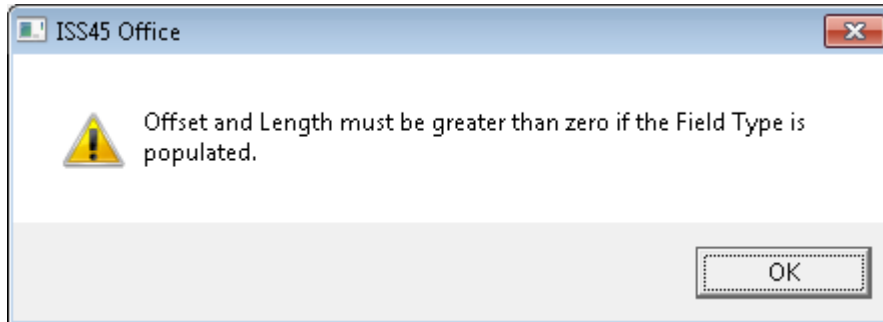
- When the record is saved, the value in this field will be saved to the corresponding Length field in the BARCOD_DEF table: RX_FLD1_LEN, RX_FLD2_LEN, and RX_FLD3_LEN.

When the user clicks OK/Apply, the following validations will be performed on the Length fields:

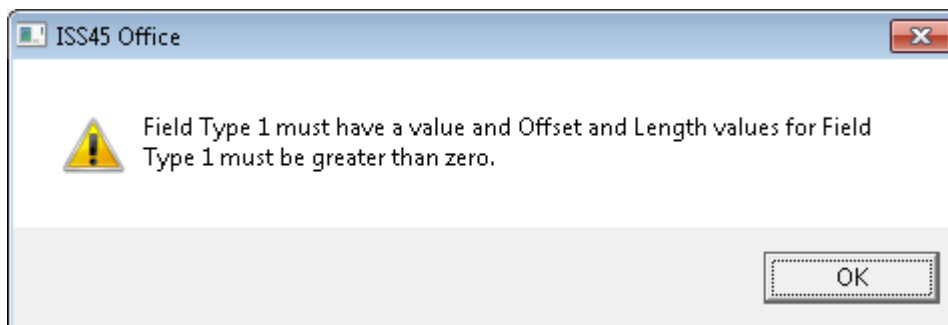
- If a particular Field Type is blank, the Offset and Length fields for that Field Type cannot have values. If the Offset or Length field is populated for a Field Type that is blank, the following error message will be displayed; “Offset and Length values cannot be populated for a blank Field Type.”



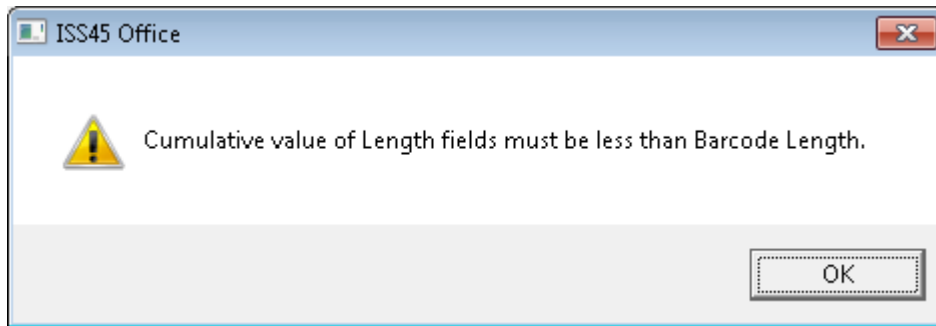
- If the Field Type is populated, the Offset and Length fields must also be populated. If the Offset or Length value is zero for a Field Type that is populated, the following error message will be displayed; “Offset and Length must be greater than zero if the Field Type is populated.”



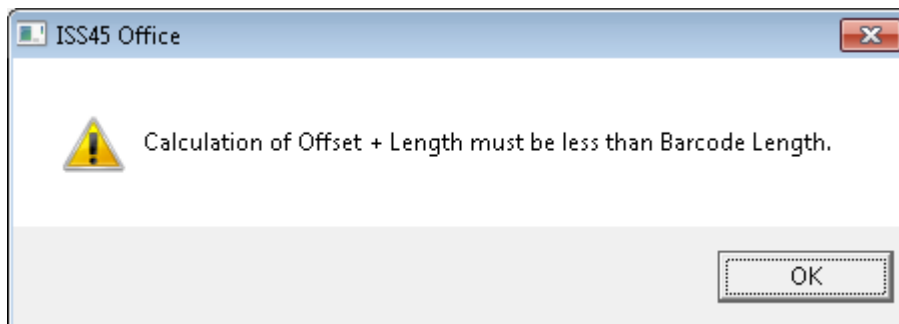
- Since the barcode fields must be setup in the order in which they appear in the barcode and there must be at least one field in the barcode, Field Type 1 must have a value and the Offset and Length for Field Type 1 must have values greater than zero. If Field Type 1 does not have a value or the Offset value or Length value for Field Type 1 is not greater than zero, the following error message will be displayed; “Field Type 1 must have a value and Offset and Length values for Field Type 1 must be greater than zero.”



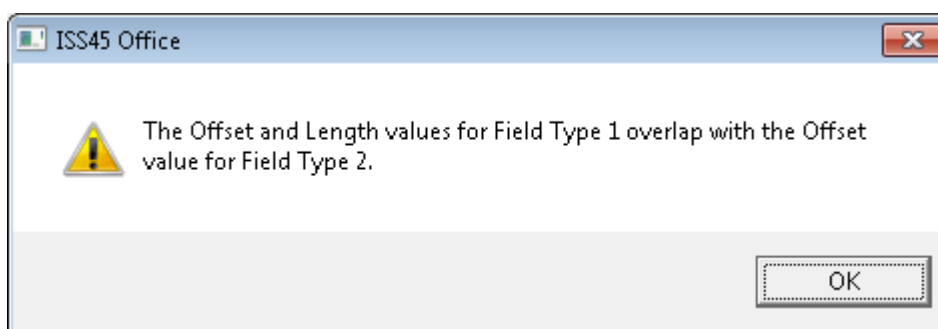
- The value of all Length fields added together cannot be greater than the value in the Barcode Length field. If the value of this calculation is greater than the value in the Barcode Length field, the following error message will be displayed; “Cumulative value of Length fields must be less than Barcode Length.”



- For each Length/Offset combination, the value of the Length + Offset cannot be greater than the value in the Barcode Length field. If the value of this calculation is greater than the value in the Barcode Length field, the following error message will be displayed; “Calculation of Offset + Length must be less than Barcode Length.”



- The Offset/Length values for one Field Type cannot overlap with the Offset/Length values for another Field Type. This means that the value of Offset + Length for Field Type 1 must be less than the Offset for Field Type 2; the value of Offset + Length for Field Type 2 must be less than the Offset for Field Type 3. If any of the Field Type Offset/Length values overlap with the Offset/Length values for another Field Type, the following error message will be displayed; “The Offset and Length values for Field Type %1 overlap with the Offset value for Field Type %2.” %1 and %2 will be replaced with the actual Field Type numbers that overlap.



POS

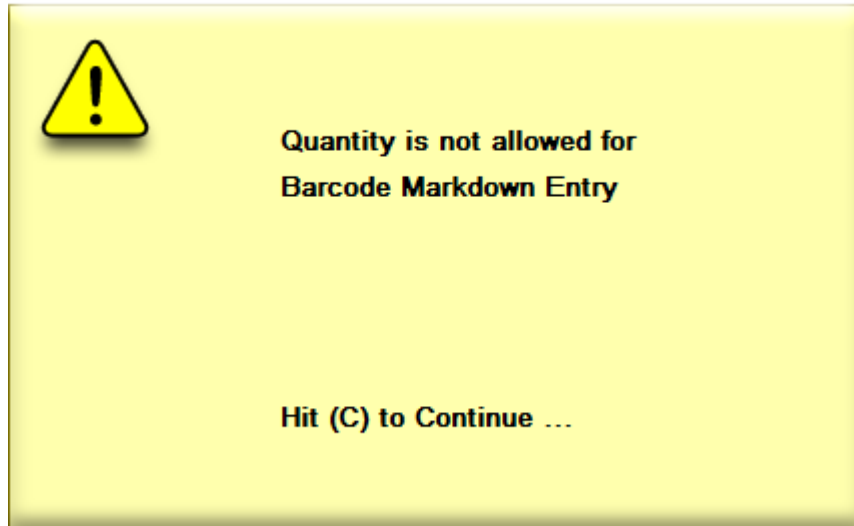
The POS is designed to do the following when Cashier scans EAN128 barcode with the appropriate prefix that identifies it as a Markdown-type barcode.

- Recognize and parse new Markdown Barcode type.
- Sell item with new price embedded in barcode.
- Write correct Transaction Log information for the overridden price.
 - PLU (0x01)Transaction
 - Price Override (0x60, 0x14)
 - New barcode override flag
 - Byte Offset 29, bit #2 (from zero)
- Print on receipt.
 - Create and use new appropriate POS formats depending on normal/weight/msu item.
 - Existing POS formats used:

- POVR_NRM (Normal Price Override)
- New POS formats:
 - POVRB_MSU (Split-Quantity Item)
 - POVRB_LB (Weighted item, System configured for LB)
 - POVRB_M_LB (Weighted, Split-Quantity Item, System configured for LB)
 - POVRB_KG (Weighted item, System configured for KG)
 - POVRB_M_KG (Weighted, Split-Quantity Item, System configured for KG)

Receipt Print – Normal item**PRICE REDUCTION****ORIGINAL PRICE 2.25****Lipton Green Tea w/C****0.89****Receipt Print – Split-Quantity item****PRICE REDUCTION****ORIGINAL PRICE 2/2.25****Lipton Green Tea w/C****0.89****Receipt Print – Normal weighted item****PRICE REDUCTION****ORIGINAL PRICE 2.49 / lb****Bananas****0.99****Receipt Print – Split-Quantity, weighted item****PRICE REDUCTION****ORIGINAL PRICE 2.49 / 2 lb****Bananas****0.99**

Error – Quantity not supported with Markdown Barcode



435135 – Single Manager Override at End of Transaction

This enhancement provides the ability to permit specified control checks to be delayed until the end of the current ticket and combined into one single supervisor approval after the total key is selected.

Front Office

A new selection is available in the drop-down box for Control Check Type.

“Delayed Supervisor Approval”

The screenshot shows the 'Control Checks Maintenance' dialog box. The 'Control Check Type' dropdown menu is open, displaying the following options: Unused, Ask Yes / No, Manager Key Lock Required, Inhibit Activity, Supervisor Key Lock Required, Warning Only, and Delayed Supervisor Approval (which is highlighted). The 'Write to Transaction File When' dropdown is set to 'Always'. The 'RPO Action' section has three radio buttons: 'None' (selected), 'Inform Only', and 'Allow Approval'. The dialog box includes navigation buttons (back, forward, etc.) and 'OK', 'Cancel', and 'Apply' buttons.

CC Number:	1
Description:	Manager Needed!
Control Check Type:	Unused
Privilege:	Unused Ask Yes / No Manager Key Lock Required Inhibit Activity Supervisor Key Lock Required Warning Only Delayed Supervisor Approval
Template Number:	
Control Check Type for Self Checkout:	Warning Only
Write to Transaction File When:	Always
<input type="checkbox"/> Display Quantity/Amount at end-of-text	
RPO Action	<input checked="" type="radio"/> None <input type="radio"/> Inform Only <input type="radio"/> Allow Approval

A new flag field has been added to CNTRL_CHK SQL table

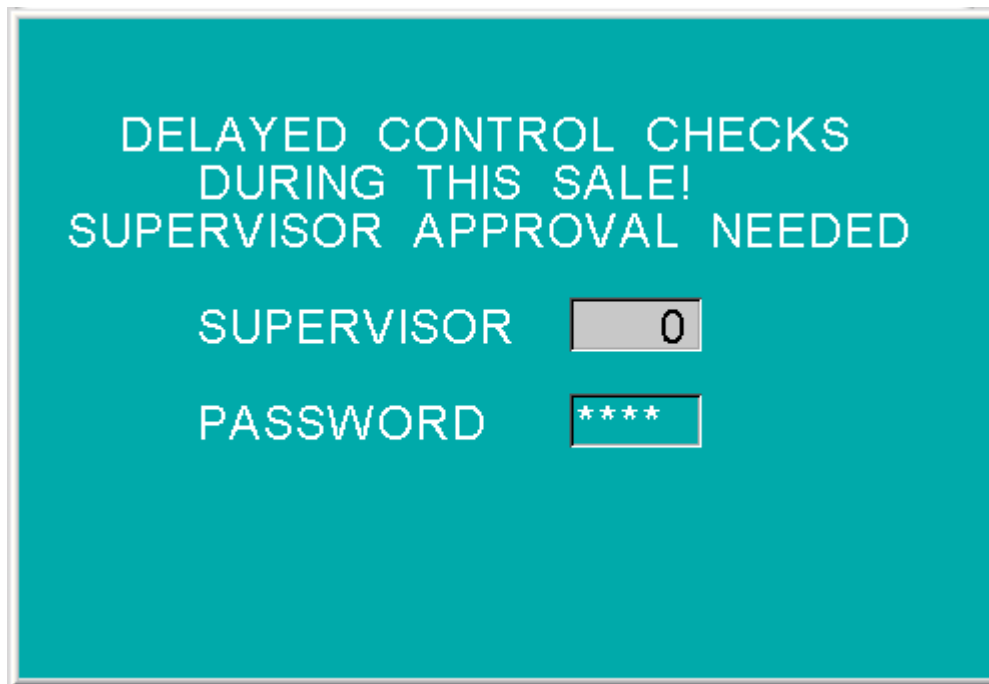
DELAY_SUP_FG (bit)

New maintenance record(s) for new flag field

Update QDX file #19 (CHCK.QDX) Byte #20, bit #0 with new flag value.

POS

Support for the new functionality for “Delayed Supervisor Approval” control check type has been added to the POS. When using this functionality, a New Supervisor entry screen for delayed control checks will display when total key is pressed.



This functionality requires support of a new field in EJ_Info_Control_Check (0x60, 0xA2) Transaction Log record:

- consolidated_auth byte #4, bit offset 7

Other Enhancements

This release was tested with the following Connected Payments and WinEPS dlls.

Connected Payments

MTX_POS.dll	828.1.0.98
MTX_EPS.dll	828.1.11.625
MTX_SE.dll	828.1.0.3

WinEPS

MTX_POS.dll	828.0.1.207
MTX_EPS.dll	828.0.1.372

MTX_POS_CP.dll	828.1.0.98
MTX_POS_WinEPS.dll	828.0.1.207
MTX_POS_EMPTY.dll	No Version

445549 - This release was tested with the available Windows Updates applied 11/24/2015.

MFS1 - Nobilis - Windows 7 Profession SP1

POS - Fujitsu 3K - WePOS.

Technical Reference Appendix

Out of Scope

A limitation of the new feature in this release is listed below (and was not addressed in development).

Note:

The limitations below are known as of this writing, and are provided in order to assist users and support personnel to plan, install and operate the capabilities described in this document. While Retailix endeavors to ensure that this information is correct and fairly stated, no attempt is made here to catalog all limitations that could be construed or that may become known in the course of use or experience.

FSD Number	Enhancement	Out of Scope
428982	Barcode Programming Markdown Option	Support for Barcode Programming Markdown is only for the current release (and will not be made to previous ISS45 releases).
435135	Single manager Override at End of Transaction	Support for Single Manager Override at End of Transaction is only for the current release (and will not be made to previous ISS45 releases).

Dependencies

Dependencies to utilize new features in this release are listed below.

FSD Number	Enhancement	Dependencies
428982	Barcode Programming Markdown Option	This requires the barcode to be EAN128 format with the appropriate prefix that identifies it as a Markdown-type barcode.



© NCR Corporation, 2015

NCR endeavors to ensure that the information in this document is correct and fairly stated but does not accept liability for any error or omission.

The development of NCR products and services is continuous and published information may not be up to date. It is important to check the current position with NCR. This document is not part of a contract or license, save insofar as may be expressly agreed.

NCR Corporation
2651 Satellite Blvd.
Duluth, GA 30096

P/N 89000872
PIN 45001/081