

The logo for ISS 45, consisting of the letters 'ISS' stacked above the number '45' in a large, bold, black serif font, all enclosed within a thin black rectangular border.

-  *ISS45 Version 7*
-  *Installation Guide*
- 
- 
- 

## ISS45 V7 Installation Guide

<b>Date of Issue</b>	<b>Product Identification Number</b>	<b>Part Number</b>	<b>Brief Description</b>
June 1997	45001/021	80329720	Initial Release
February 1999	45001/021	7.6 CD-ROM 80602987	With Version 7.6
August 2000	45001/021	89000064	Version 7.7
August 2008	45001/021	89000464	Version 7.1.3.0

**© Copyright StoreNext Retail Technologies LLC 1995-2008  
All rights reserved**

This publication is protected by federal copyright law. No part of this publication may be reproduced or transmitted into any human or computer language in any form or by any means, stored in a retrieval system, transmitted, redistributed, translated or disclosed to third parties, or de-compiled in any way including, but not limited to, photocopy, photograph, electronic, mechanical, magnetic or manual without the express written permission of StoreNext Retail Technologies LLC or its licensors, if any. This document, notwithstanding the above, may be distributed in electronic or printed form to personnel who are employed by either (1) a StoreNext customer of the subject system of this document or (2) personnel from an authorized StoreNext dealer of the subject system of this document. All copies, so distributed and/or so authorized, shall contain a full copy of this copyright notice.

StoreNext Retail Technologies LLC endeavors to ensure that the information in this document is correct and fairly stated but does not accept liability for any error or omission. StoreNext Retail Technologies LLC makes no representation or warranties with respect to the contents hereof, and specifically disclaims any implied warranties of merchantability or fitness for a particular purpose or non-infringement. No commitments by StoreNext or its suppliers are made from this documentation which is provided for information only.

Development of StoreNext products and documentation is continuous: StoreNext Retail Technologies LLC reserves the right to revise this publication and to make changes from time to time in the contents hereof or in the products herein described or discussed without notice and without any obligation of StoreNext Retail Technologies LLC to notify any person or organization of such revision or changes. Information published in this document will likely become obsolete over time and it is recommended that users regularly check for updates and newer versions.

StoreNext Retail Technologies LLC has prepared this manual for use by users, authorized third parties and personnel of StoreNext Retail Technologies LLC as a guide to the proper installation, operation, customization and/or maintenance of StoreNext Retail Technologies LLC equipment and software. The drawings and specifications contained herein are the property of StoreNext Retail Technologies LLC and/or its licensors.

Third-party products, services, or company names referenced in this document may be trademarked or copyrighted by their respective owners, and are for identification purposes only.

Copyrights, trademarks and license agreements shall be governed and construed in accordance with the laws of the State of Texas and the Federal Arbitration Act, and shall benefit Retailix, its successors, and assigns.

Address comments and corrections to:

**StoreNext Retail Technologies LLC**  
**Software Program Director**  
6100 Tennyson Parkway  
Suite 130  
Plano, Texas 75024

These instructions will help you load the ISS45 software. The below chart will help you understand which operating system is compatible with versions of ISS45 V7.

<b>ISS45 Controller Service Matrix</b>						
<b>Operating System:</b>	<b>DOS</b>	<b>Windows NT 4.0 Desktop</b>	<b>Windows NT Server</b>	<b>Windows2000 Professional</b>	<b>Windows Server</b>	<b>Windows XP Professional</b>
<b>ISS45 V7.6:</b>	Yes	Yes		Yes		
<b>ISS45 V7.7:</b>	Yes	Yes		Yes	Windows2000 Server	
<b>ISS45 V7.8:</b>	Yes	Yes		Yes	Windows2000 Server	
<b>ISS45 V7.0.8.3:</b>		SP3		SP4	Windows2000 Server	
<b>ISS45 V7.1.0.0:</b>		SP3		SP4	Windows2000 Server	SP2 on MFS1/MF2 (best 7.1.0.0-090+)
<b>ISS45 V7.1.1.0+:</b>					Windows2000 Server SP4	SP2 on MFS1/MF2

## Table of Contents:

Installing ISS45 Version 7 on Windows 2000 Professional .....	3
Installing ISS45 Version 7 on Windows XP .....	16
Uninstalling ISS45 .....	19
Recovering ISS45 .....	23

## Installing ISS45 Version 7 on Windows 2000 Professional

Insert the Version 7 CD into the computer's CDRom Drive. If Auto Run is enabled and brings up a window, close it and follow directions below.

From the computer desktop, Click on Start/Run/Browse.

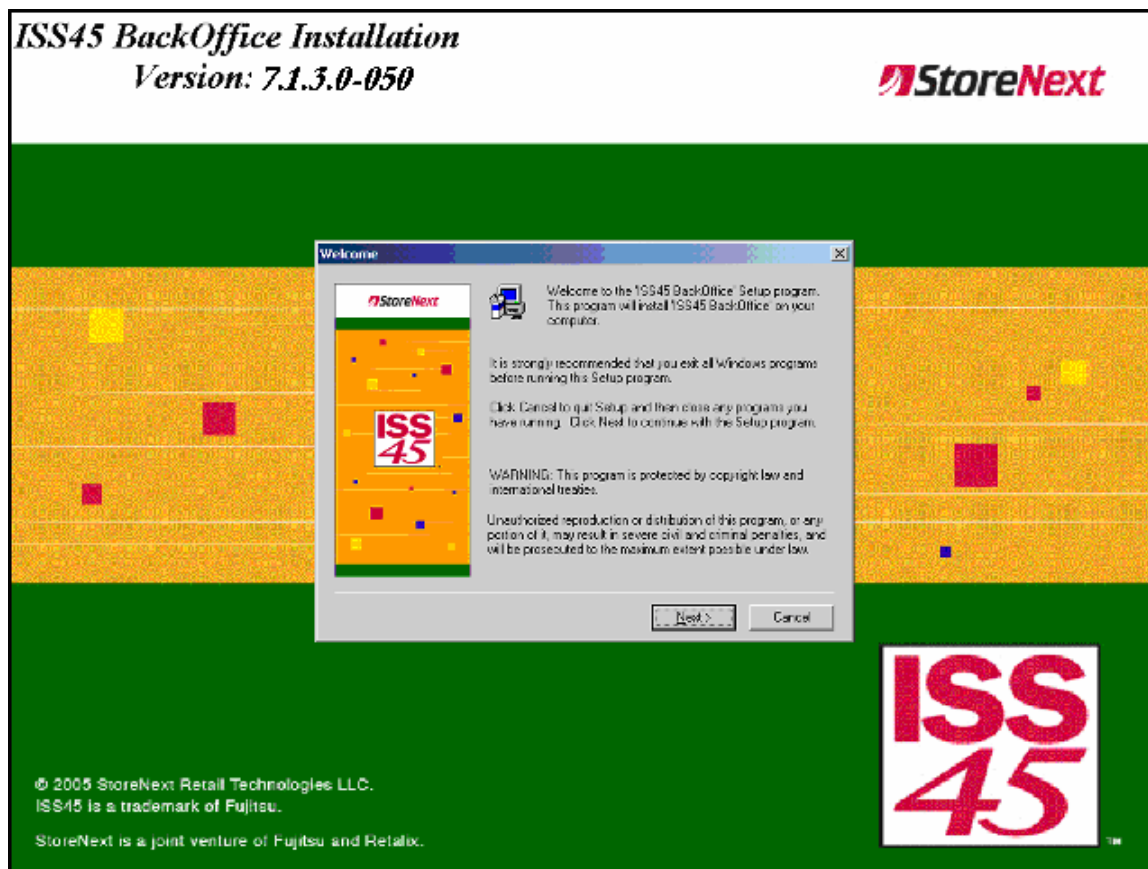
Browse to the CDRom and double click on the BackOffice folder

Double click on the Disk 1 folder.

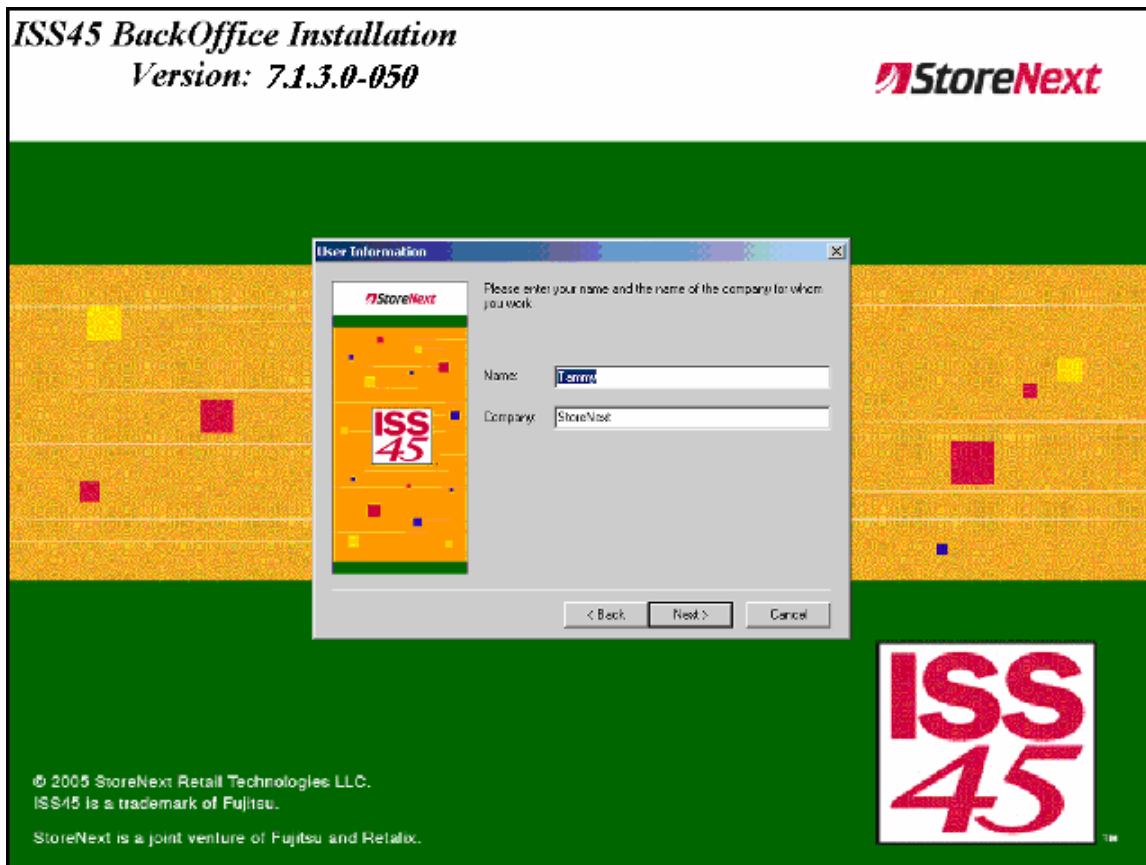
Double click on SETUP.EXE.

Press OK to start the installation.

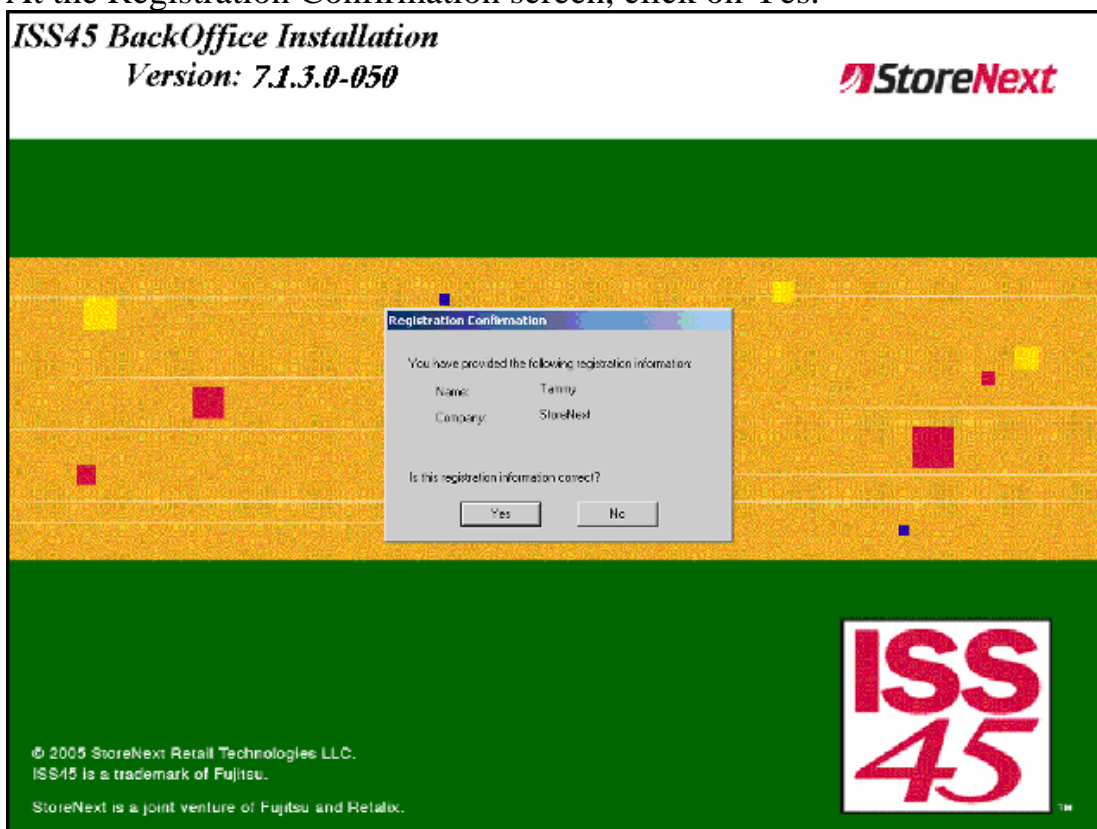
At the Welcome screen, click on Next



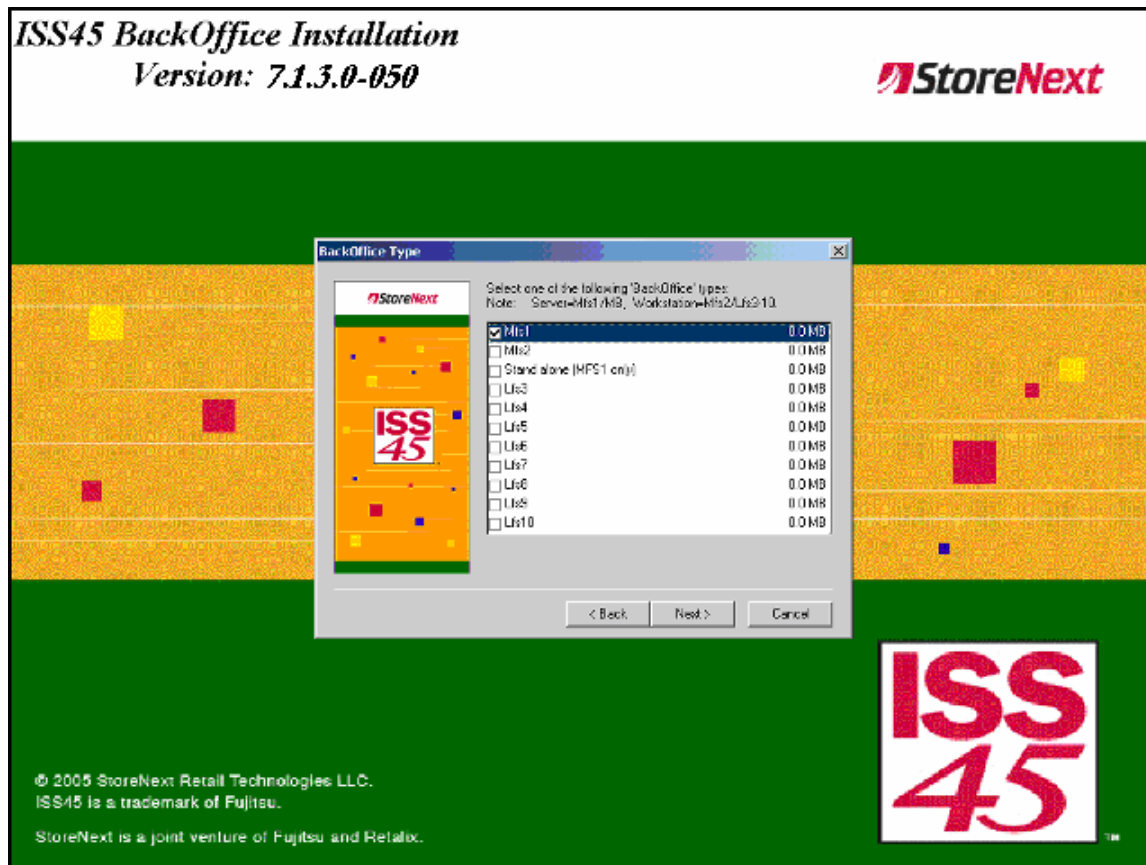
At the User Information screen, type in information and click Next.



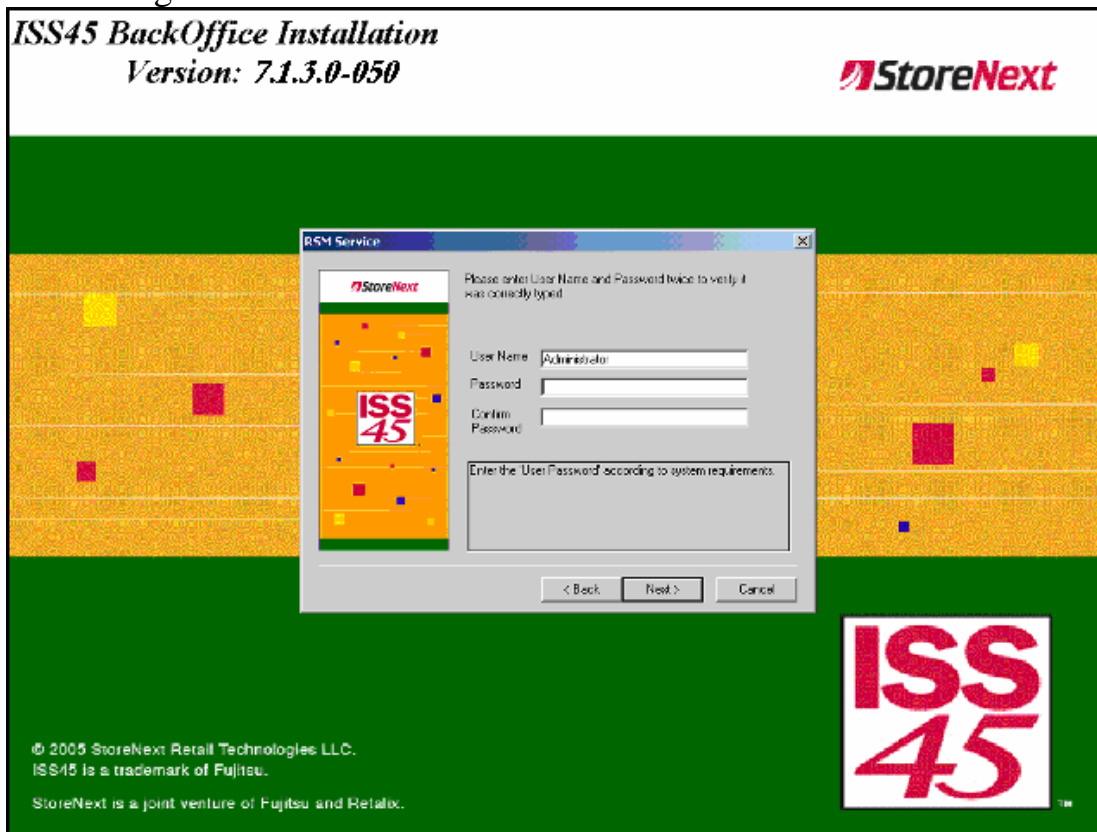
At the Registration Confirmation screen, click on Yes.



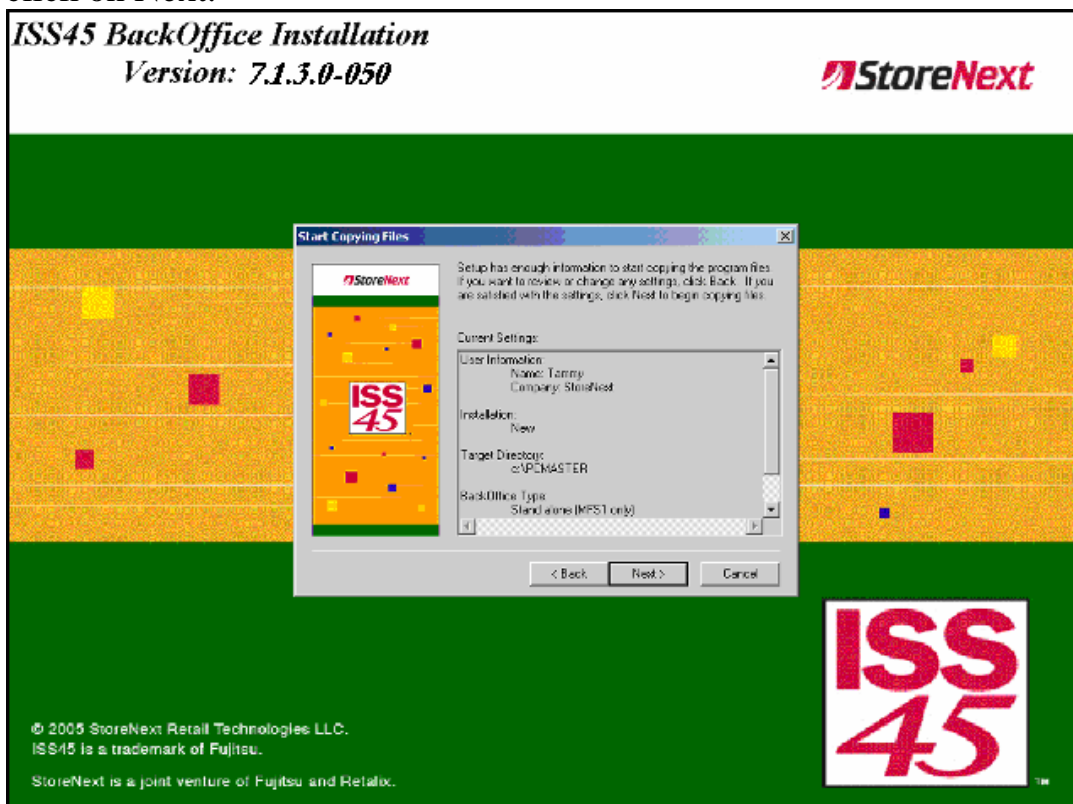
At the BackOffice Type screen, choose the Type of MFS this will be. Dual servers are MFS1 or MFS2. Single System would be StandAlone. If this is an extra PC (LFS), mark it appropriately and click on Next.



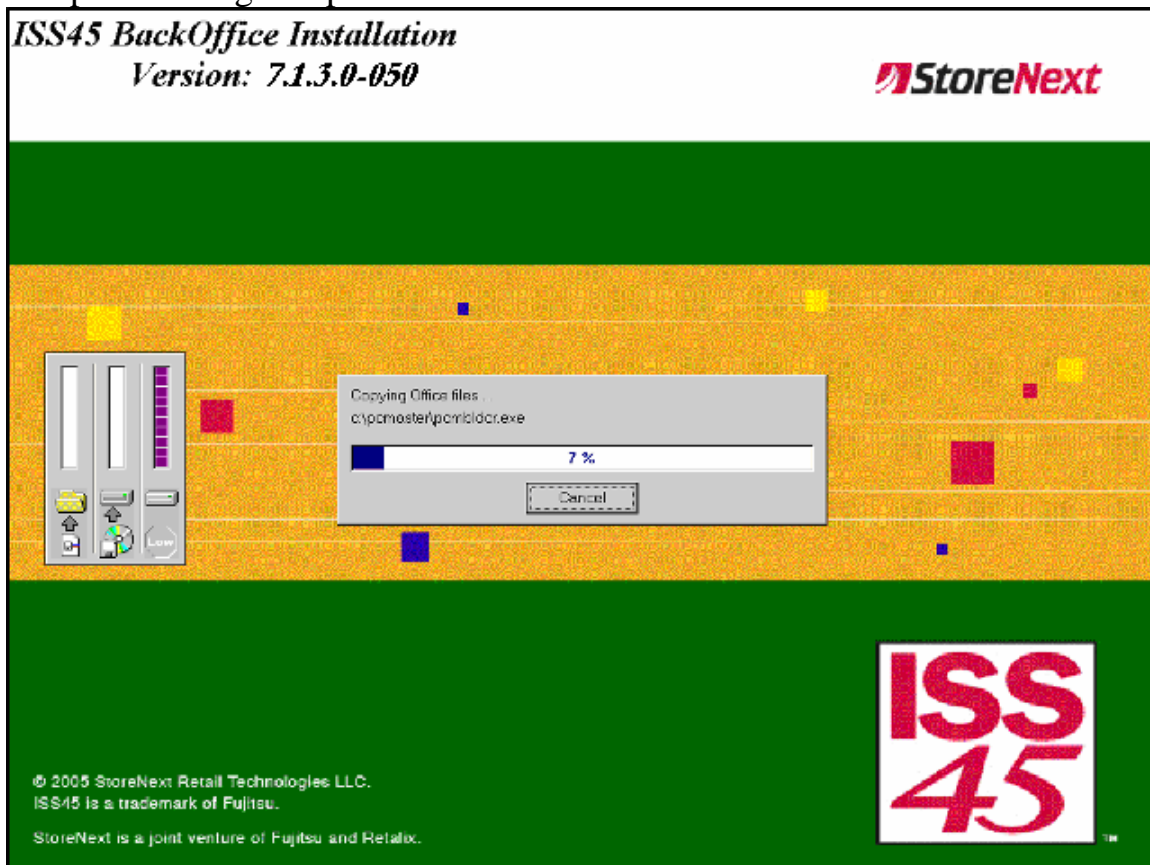
At the RSM Service screen, enter the User and Password of the computer you are loading ISS45 on.



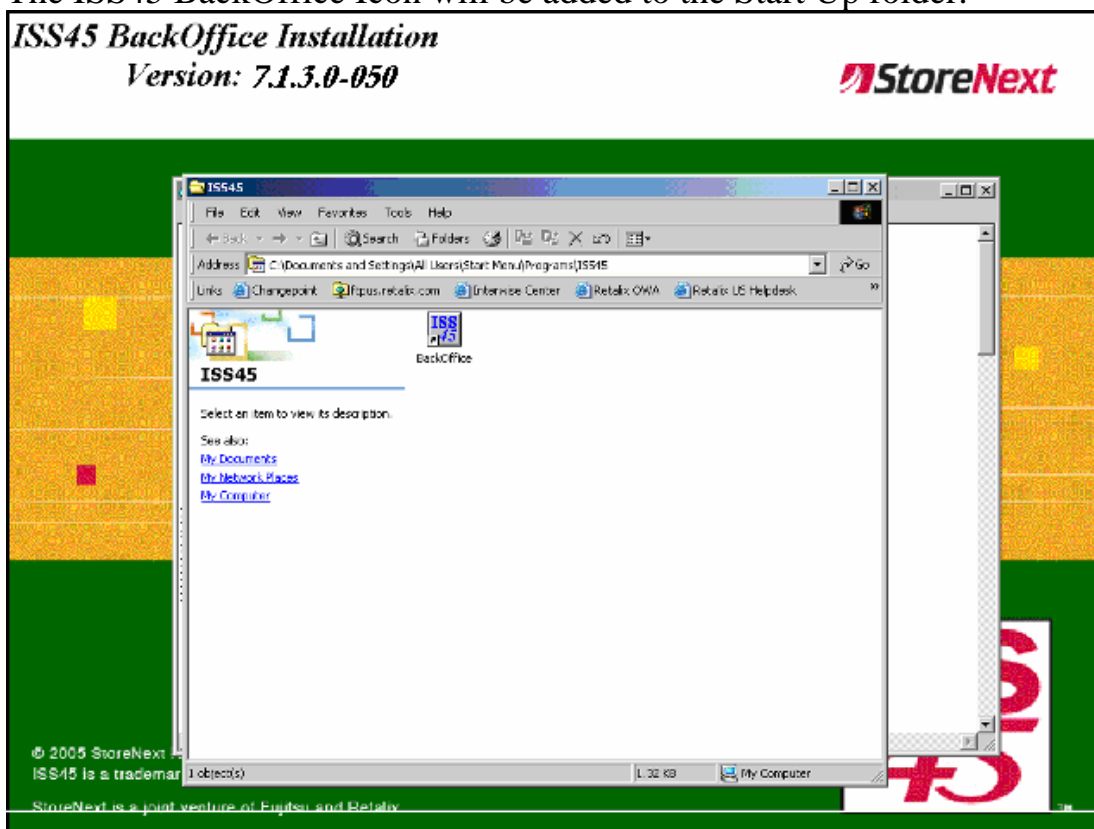
At the next Start Copying Files screen, confirm the options you chose and click on Next.



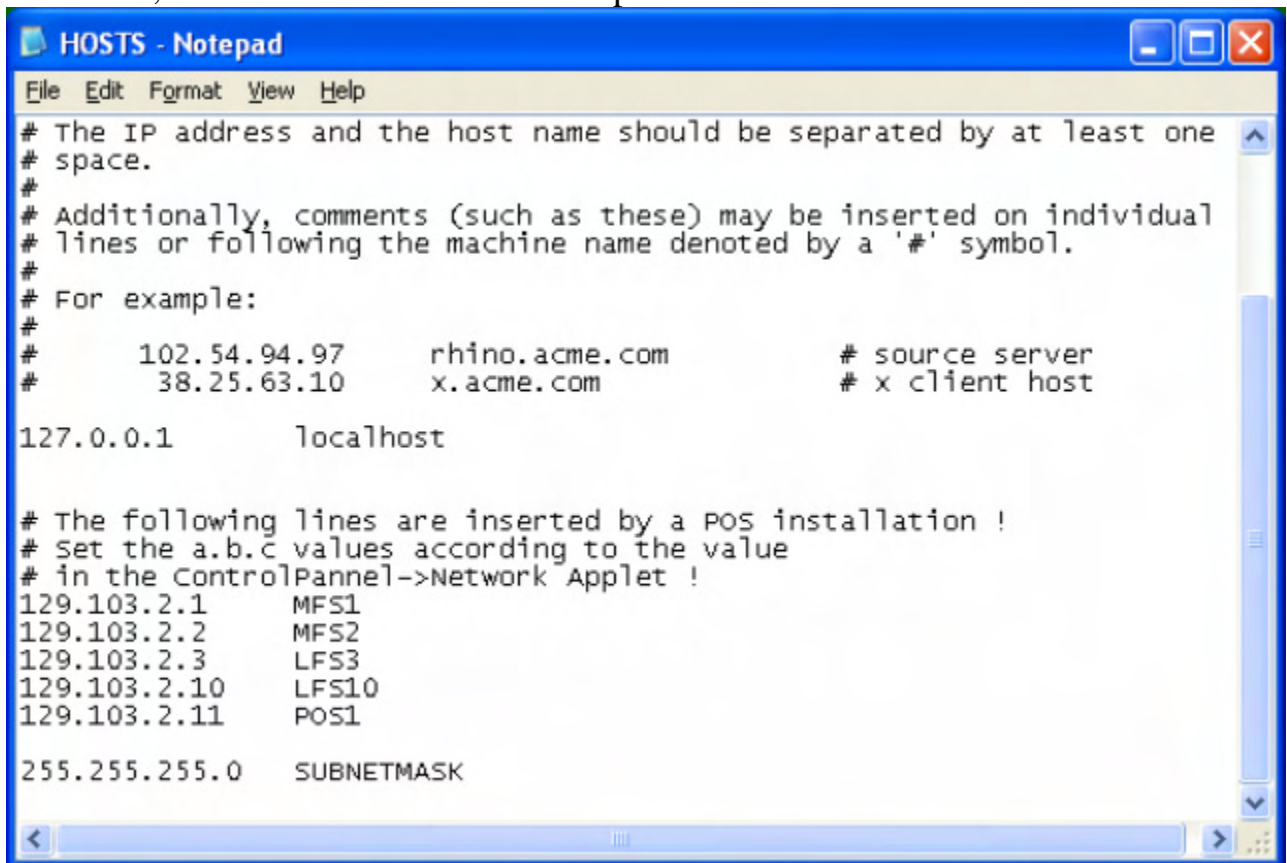
The installation will begin. This will take a few minutes. Do not turn off the computer during this process.



The ISS45 BackOffice Icon will be added to the Start Up folder.



The HOSTS file will show on the screen. You must change the IP addresses of the MFS, POS and Subnet Mask. Example below.



```

HOSTS - Notepad
File Edit Format View Help
# The IP address and the host name should be separated by at least one
# space.
#
# Additionally, comments (such as these) may be inserted on individual
# lines or following the machine name denoted by a '#' symbol.
#
# For example:
#
#       102.54.94.97      rhino.acme.com          # source server
#       38.25.63.10     x.acme.com             # x client host

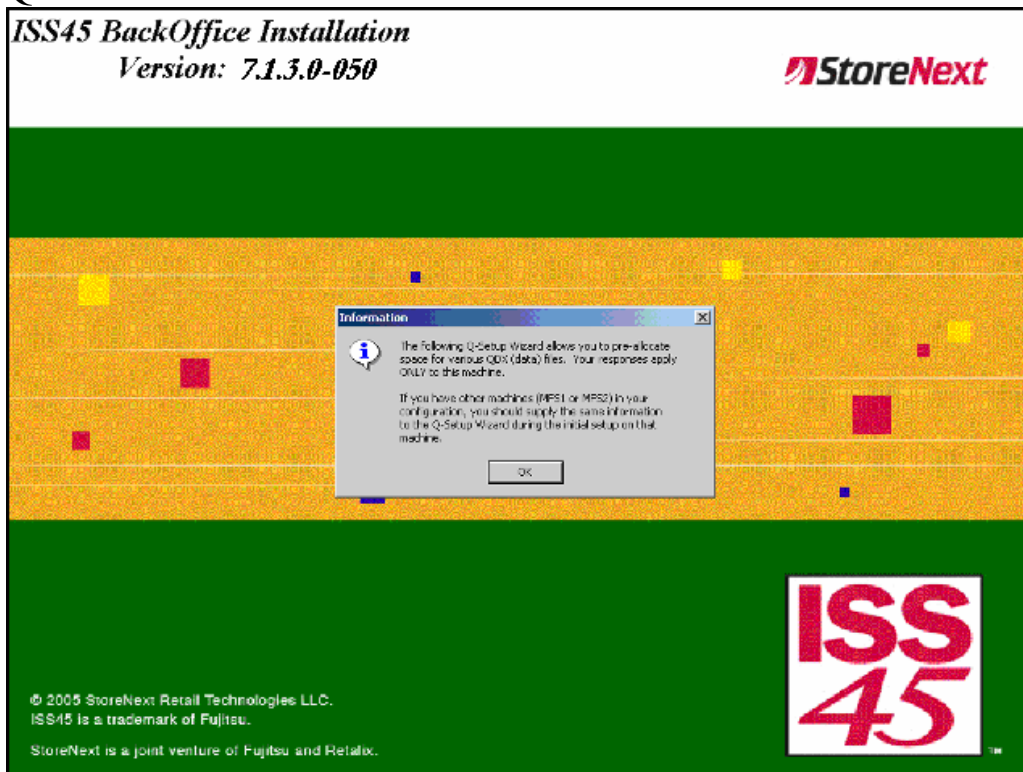
127.0.0.1      localhost

# The following lines are inserted by a POS installation !
# set the a.b.c values according to the value
# in the ControlPanel->Network Applet !
129.103.2.1    MFS1
129.103.2.2    MFS2
129.103.2.3    LFS3
129.103.2.10   LFS10
129.103.2.11   POS1

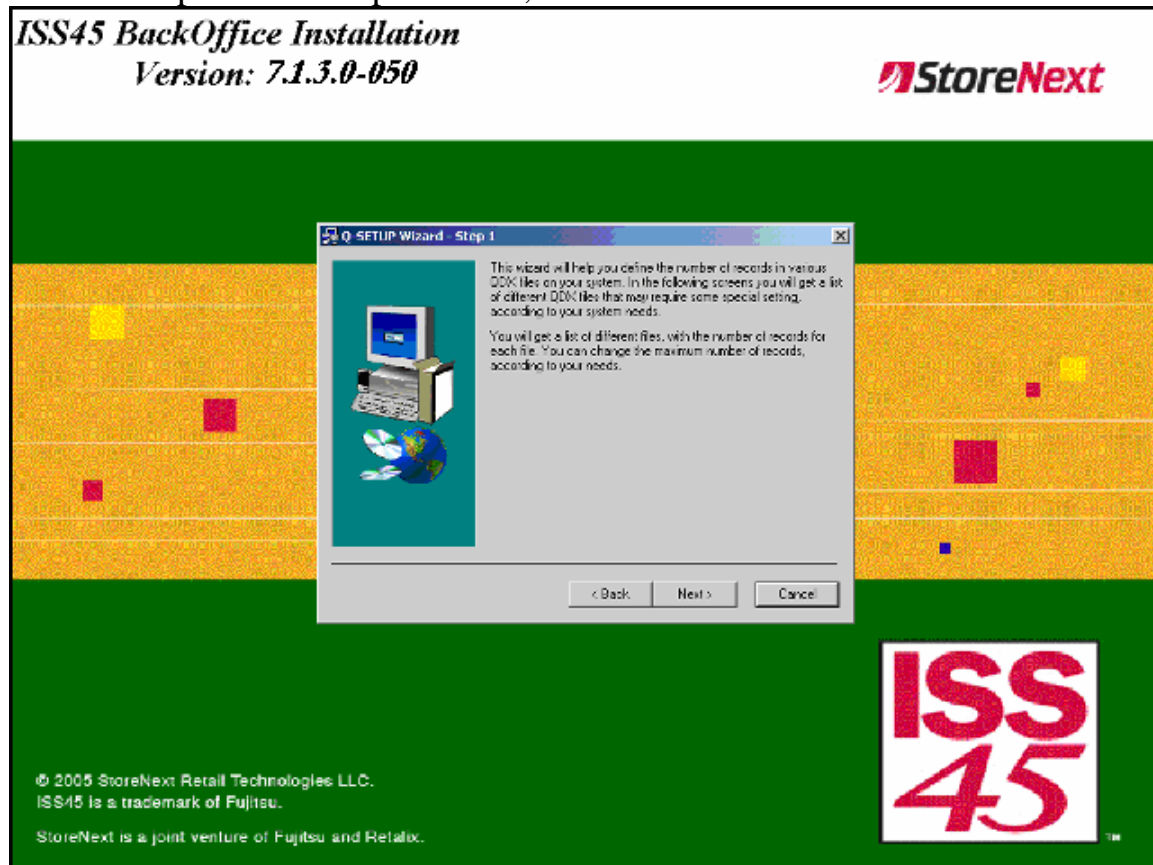
255.255.255.0  SUBNETMASK

```

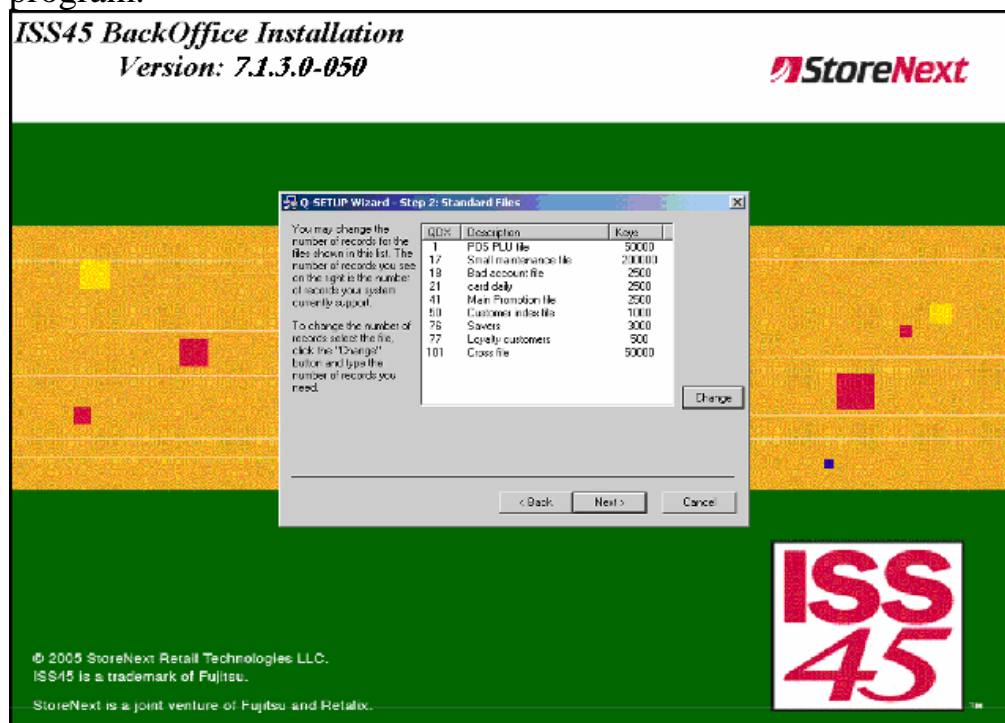
The next set of screens will allow you to change the sizes of some of the QDX files. Click OK to continue to the next screen.



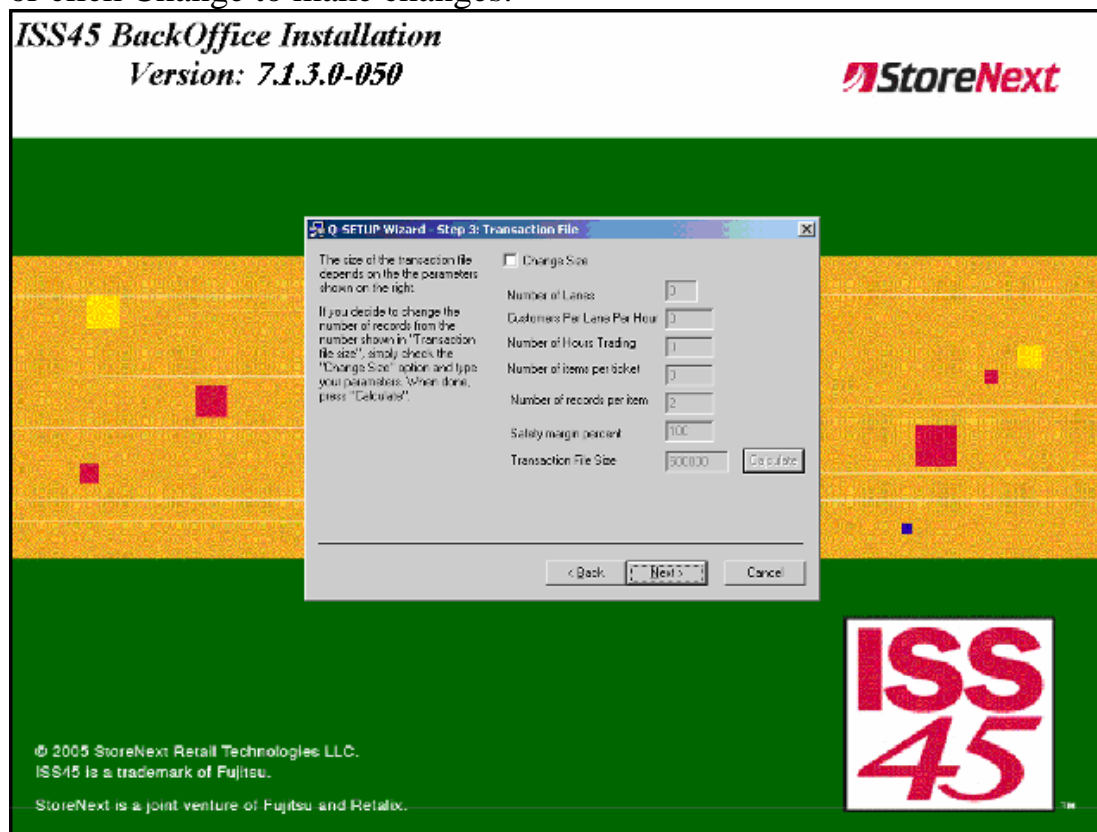
At the Setup Wizard Step 1 screen, click Next.



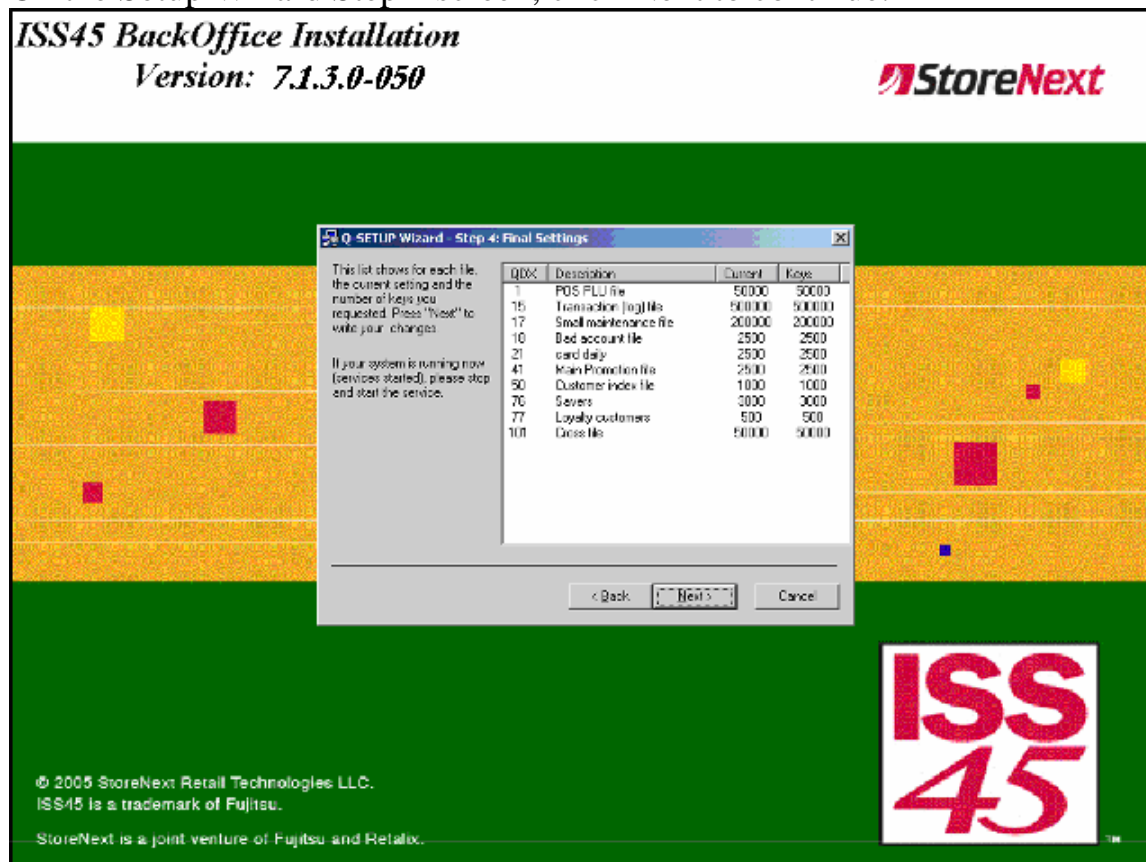
At the Setup Wizard Step 2 screen, click Next to accept the Default Sizes or click Change to make changes. If you do not wish to make changes at this time, you can change the size of these files anytime you like via the ISS45 program.



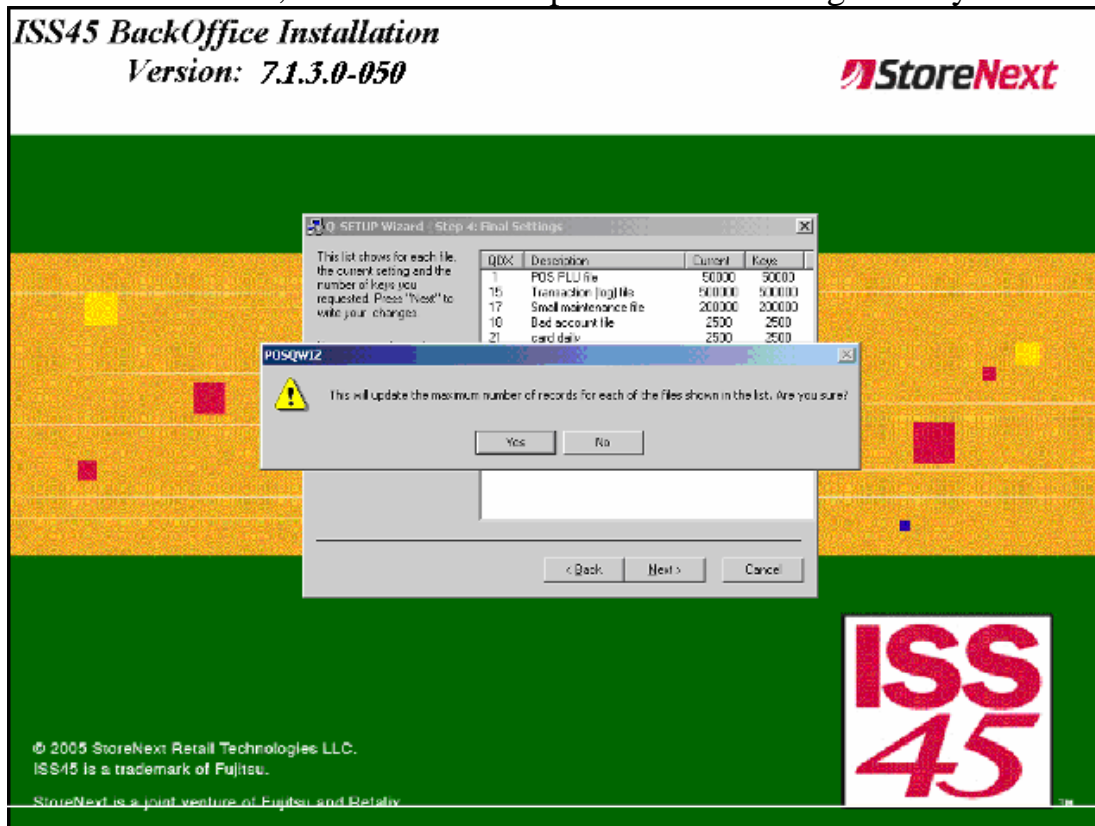
At the Setup Wizard Step 3 screen, click Next to continue accepting defaults or click Change to make changes.



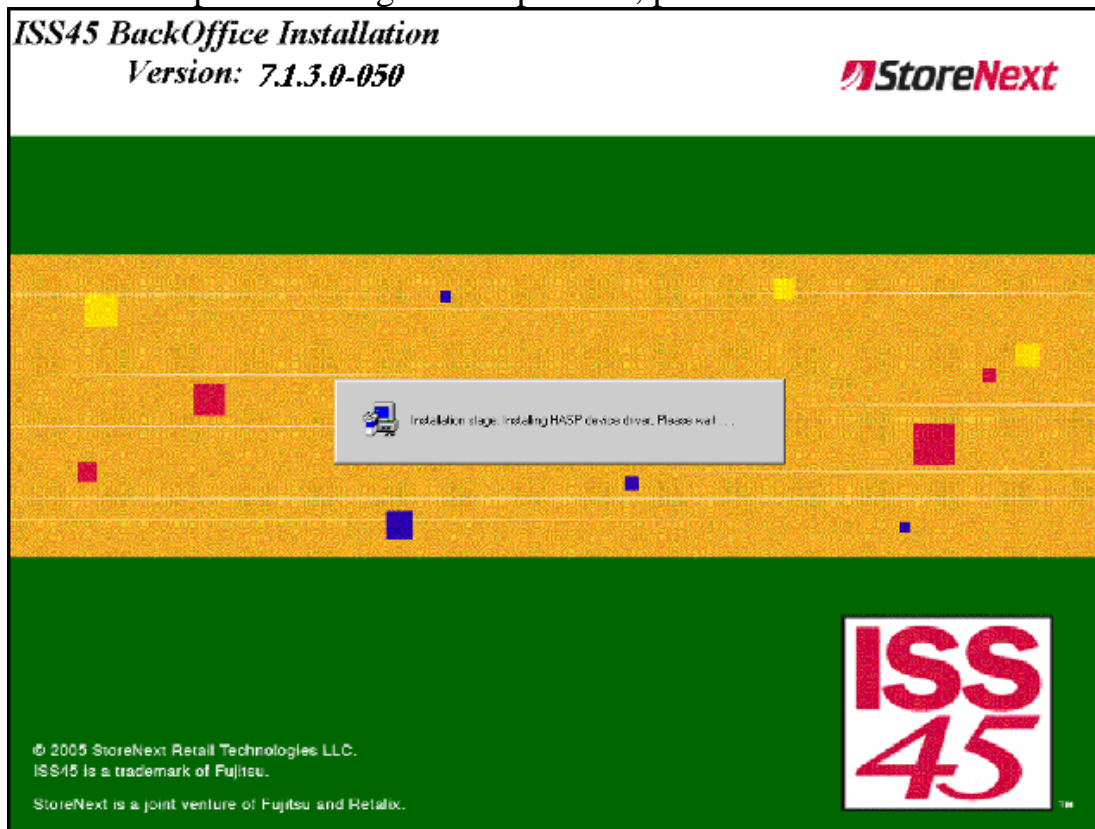
On the Setup Wizard Step 4 screen, click Next to continue.



At the next screen, click Yes to accept defaults or changes that you made.

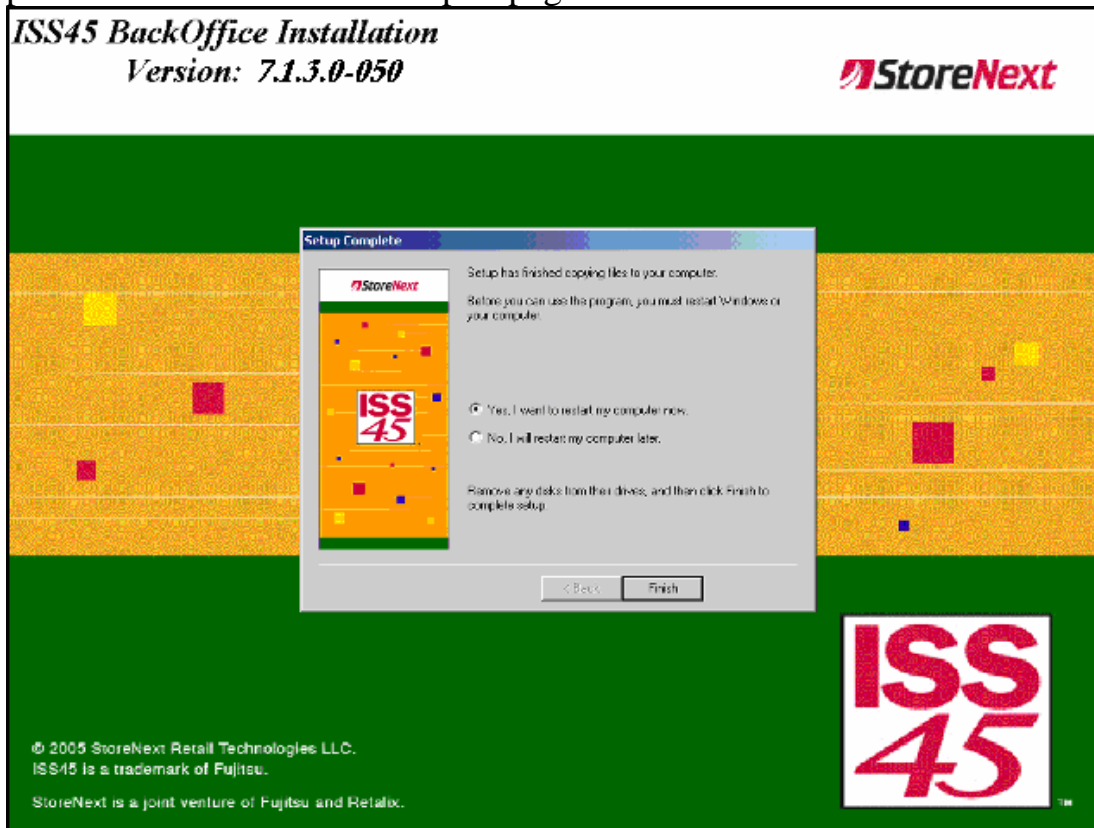


The final step is installing the Hasp driver, please wait.

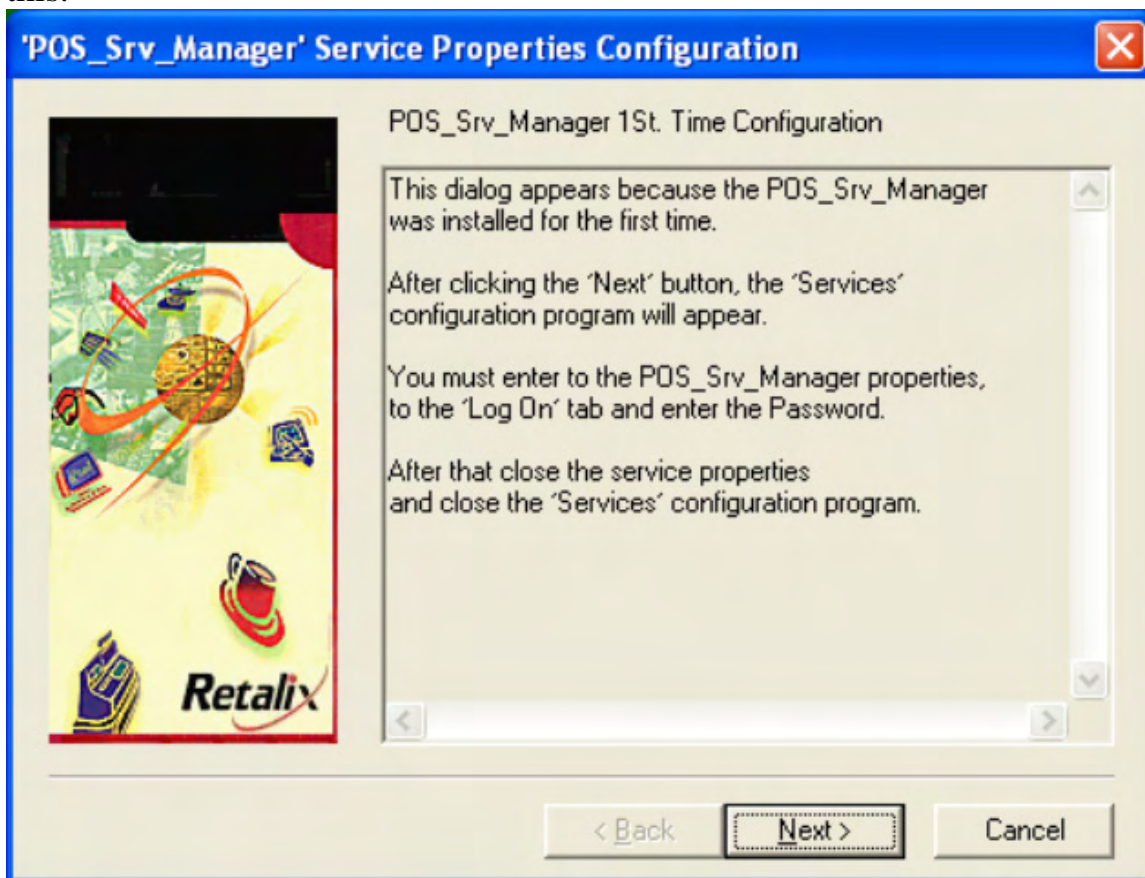


At the final screen, choose Yes to reboot and click Finish.

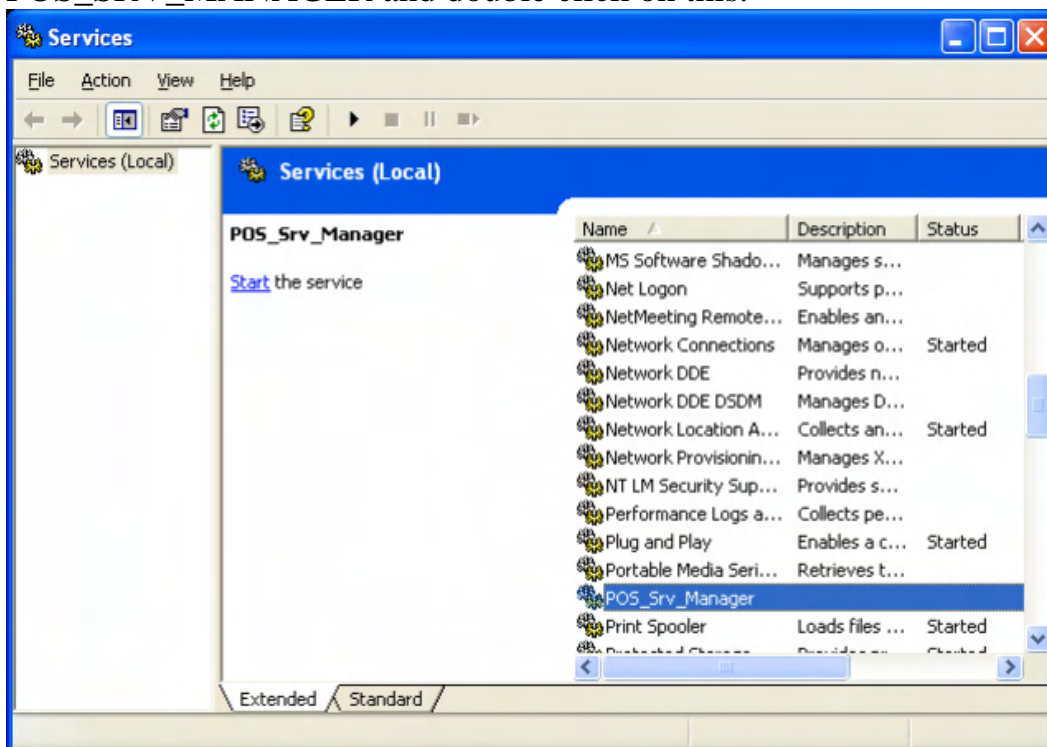
NOTE: If you are installing into an existing site for recovery purposes, please Click NO here and skip to page 23.



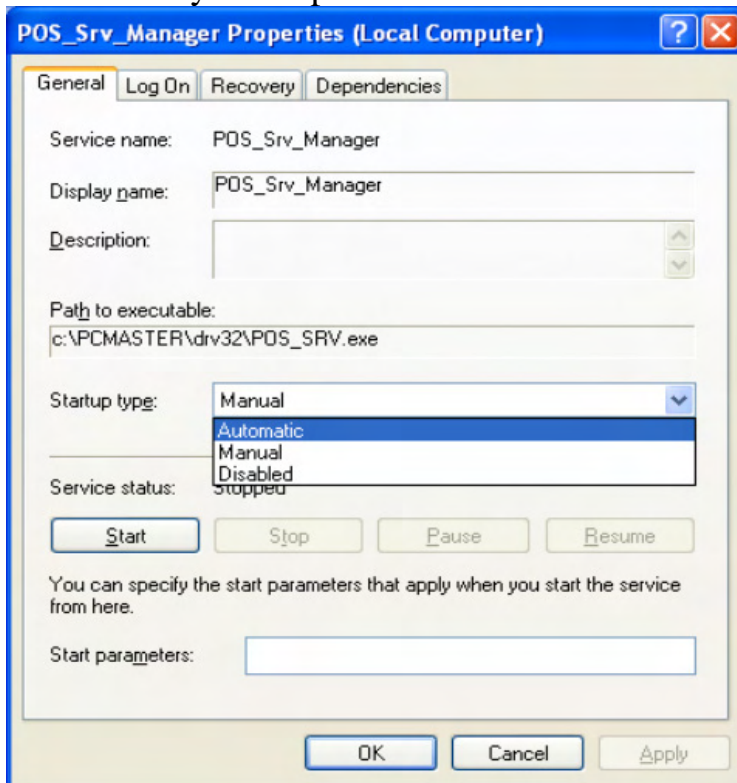
After the reboot, the POS Services will need to be setup. Click on Next to do this.



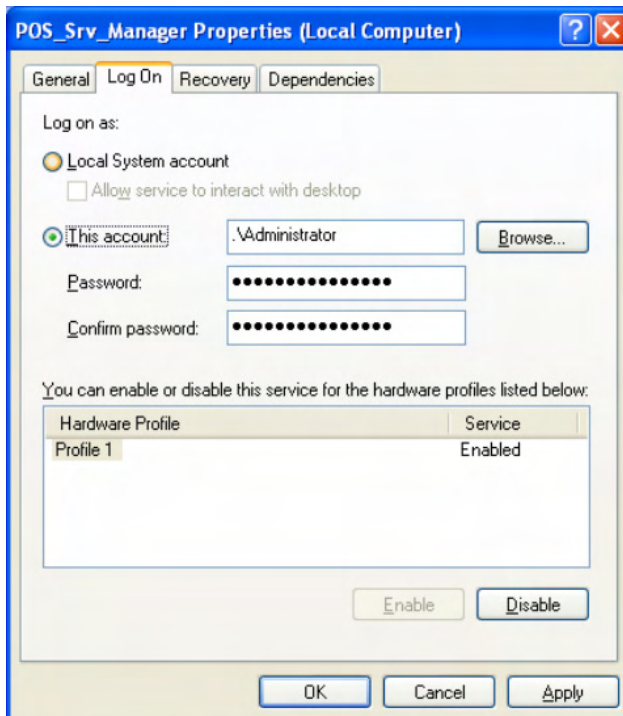
The Services window will open. You must scroll down to POS\_SRV\_MANAGER and double click on this.



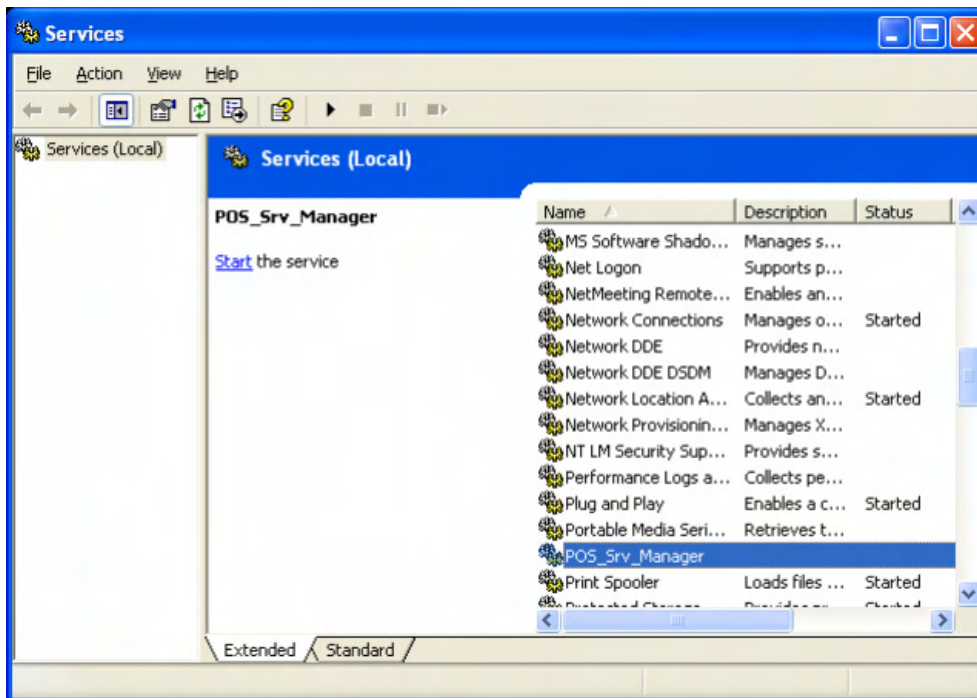
Services will be set to Manual and you need to change that to Automatic. What this does is, each time the computer is rebooted, ISS45 will automatically start up.



Click on the Log On tab to verify Administrator and password. If you wish to run ISS45 as a Local System account, select this and click Ok. If for some reason the computer is rebooted and logged on as a different user, ISS45 will not start.



Once you Ok the Log On screen, Exit the Services screen by clicking the X in the top right corner.



At this time, the ISS45 services will now load and your system will become operational. You can bring up the Services Monitoring screen to view the start up process. Once you see End of SRVSTART.BAT, you can double click the Back Office Icon on the Desktop to open the ISS45 Application.

## Installing ISS45 Version 7 on Windows XP

To run ISS45 on a server with XP Pro as the operating system two (2) items are required:

**#1** - The changes listed below must be made to the system

**#2** – After installing ISS45 V7.1.0.0 also install the Back Office patch V7.1.0.0\_090. Previous versions of ISS45 have not been certified to run with XP Pro. Failure to install Back Office patch V7.1.0.0\_090 will result in End-Of-Day issues. If you are installing an ISS45 Version higher than 7.1.0.0\_090, you do not need to worry about this step.

Note: **Only use Windows XP Pro** and not XP Pro X64 as Microsoft warns that “Windows XP Pro X64 doesn't run 16-bit applications, including any 32-bit programs that rely on a 16-bit installer”.

### XP Pro Setup Instructions-

- 1) Change to the classic logon (Control ATL DEL) –
  - A) Click on START, CONTROL PANEL, USER ACCOUNTS, under PICK A TASK  
select “CHANGE THE WAY THE USERS LOG ON AND OFF”
  - B) If a window opens that says “Fast User Switching can not.....” select CANCEL
  - C) Uncheck the box next to “Use the Welcome screen”
  - D) If you don't do this you won't see administrator on the XP screen and can't use it. This gives you the old CTRL+ALT+DEL logon
  
- 2) Sharing in XP defaults to a guest share. Change this to be like the old sharing –
  - A) Click on START, CONTROL PANEL, PERFORMANCE AND MAINTENANCE,  
ADMINISTRATIVE TOOLS, LOCAL SECURITY POLICY, LOCAL POLICIES,  
SECURITY OPTIONS
  - B) Right click on “Network access: Sharing and security model for local accounts” and then PROPERTIES, select “Change to Classic - local users authenticate as themselves” from the drop-down menu
  - C) Save changes and exit
  
- 3) Turn off the firewall after installing **XP SP2** –
  - A) Click START, CONTROL PANEL, WINDOWS SECURITY CENTER,  
WINDOWS FIREWALL
  - B) Click on the GENERAL tab
  - C) Select OFF
  - D) Click on OK and exit any open screens

- 4) Turn off the default screen saver for XP Pro –
- Click START, CONTROL PANEL, APPEARANCE AND THEMES, DISPLAY
  - Click the SCREEN SAVER tab
  - At the SCREEN SAVER box click on the down arrow to access the dropdown Menu
  - Select NONE and click APPLY to save the settings
  - Exit any open screens
- 5) Turn off the default “Automatic Time Synchronizing” –
- At the desktop right click on the systray (at the far right side of the task bar)
  - Select “Adjust Date/Time”
  - Select the “Internet Time” tab
  - Un-check the box next to “Automatically synchronized with an Internet time server”
  - Apply the change and exit
- 6) Enable Automatic Logon –
- Click on START, click on RUN, type REGEDIT and then click OK
  - Go to **HKEY\_LOCAL\_MACHINE\SOFTWARE\Microsoft\WindowsNT\CurrentVersion\WinLogon**
  - Right click on **DefaultUserName**, select MODIFY, type **Administrator**
  - Click on EDIT, click NEW, click STRING VALUE
  - Type **DefaultPassword** as the value name and depress ENTER
  - Right click on DefaultPassword, select MODIFY, type your password in the VALUE DATA box
  - Click on EDIT, click NEW, click STRING VALUE
  - Type **AutoAdminLogon** as the value name and depress ENTER
  - Right click on AutoAdminLogon, select MODIFY, enter **1** in the VALUE DATA Box
  - Click on EDIT, click NEW, click STRING VALUE
  - Type **ForceAutoLogon** as the value name and depress ENTER
  - Right click on ForceAutoLogon, select MODIFY, enter **1** in the VALUE DATA Box
  - Exit REGEDIT and reboot the server
- 7) Shared printer setup –
- On any MFS or LFS servers that are using a shared printer click on START and then click on RUN
  - Type CMD and then click on OK
  - At the command prompt type the following –  
Net use lpt1: \\<server>\<shared\_printer\_name> /persistent:yes  
For example, if the printer is physically located on MFS1 and the share name is

LASER1 this line would be typed as listed below on MFS2 and any LFS:  
Net use lpt1: \\mfs1\laser1 /persistent:yes

**8) Set the display properties –**

- A) Click START, CONTROL PANEL, APPEARANCE AND THEMES, DISPLAY
- B) Click the SETTINGS tab
- C) Ensure that the screen resolution is 800X600 pixels and the color quality is Medium (16 bit)

**9) Turn off Windows Messenger –**

- A) Double click on the Windows Messenger icon in the lower right corner of the Screen next to the time
- B) Click on TOOLS to get a dropdown and then click on OPTIONS
- C) Click on the PREFERENCES tab
- D) Uncheck all boxes in both the GENERAL and ALERTS sections
- E) Click OK at the bottom of the screen to save the changes
- F) Exit any open screens

**10) Optional: Turn off Windows automatic updating –**

- A) Go to START, CONTROL PANEL, PERFORMANCE AND MAINTENANCE, SYSTEM
- B) Click on the “Automatic Updates” tab
- C) Uncheck the box next to “Keep my computer up to date.....”
- D) Apply the change, click on OK and exit

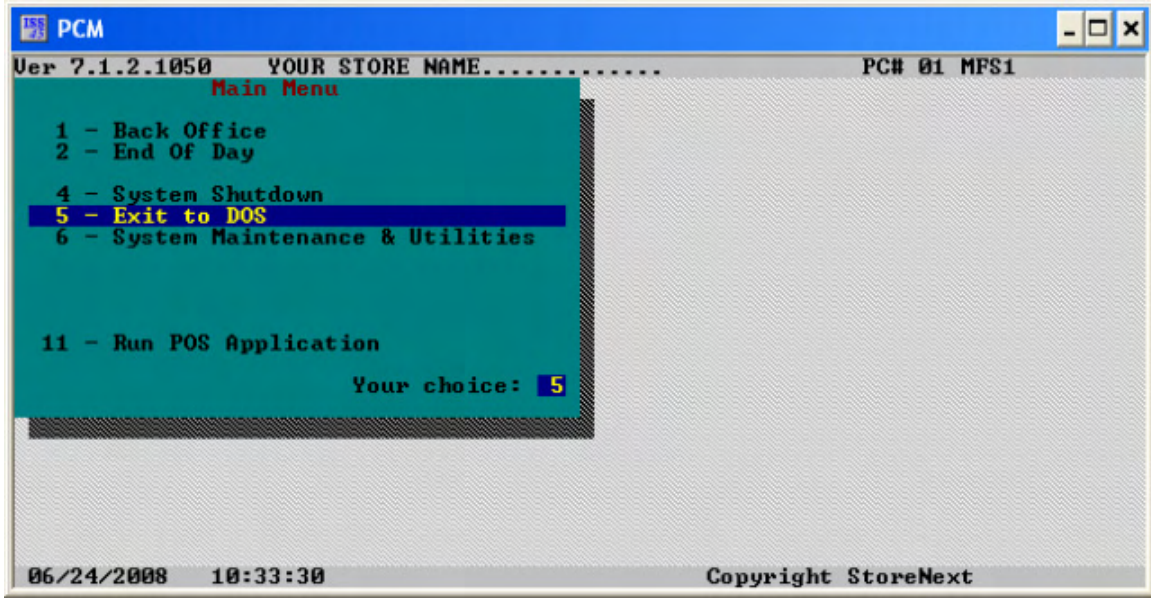
**11) Optional: Turn off Security Center alerts at boot time –**

- A) Go to START, CONTROL PANEL, SECURITY CENTER
- B) Click on the “Change the way Security Center alerts me”
- C) In the resources box uncheck all boxes
- D) Exit

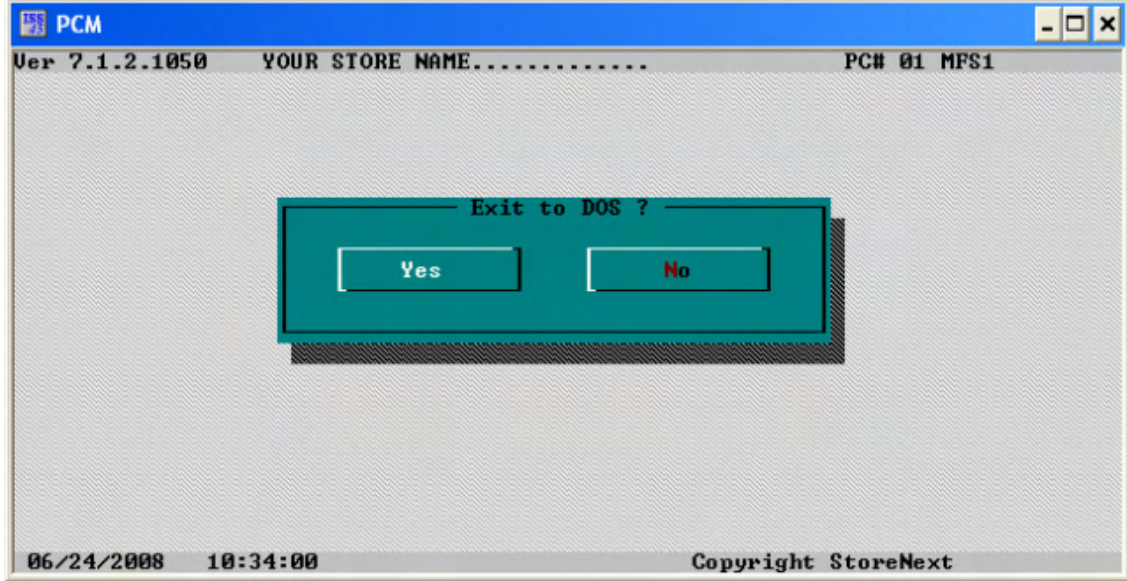
After doing this, you may start the ISS45 installation as described on pages 3 thru 15.

# Uninstalling ISS45

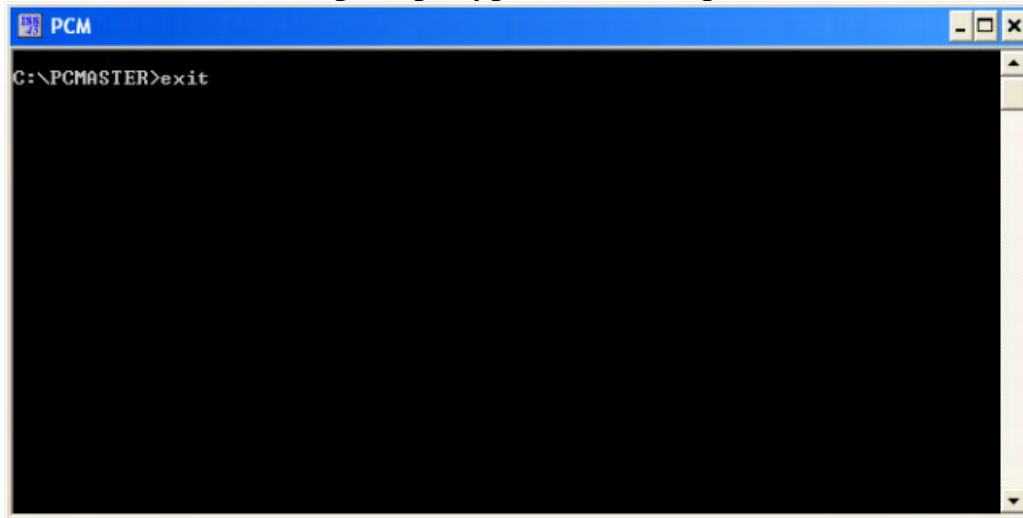
To uninstall the ISS45 application, follow the steps below. IF you follow these steps, the application will uninstall successfully every single time. From the ISS45 Main Menu, choose # 5 Exit to DOS



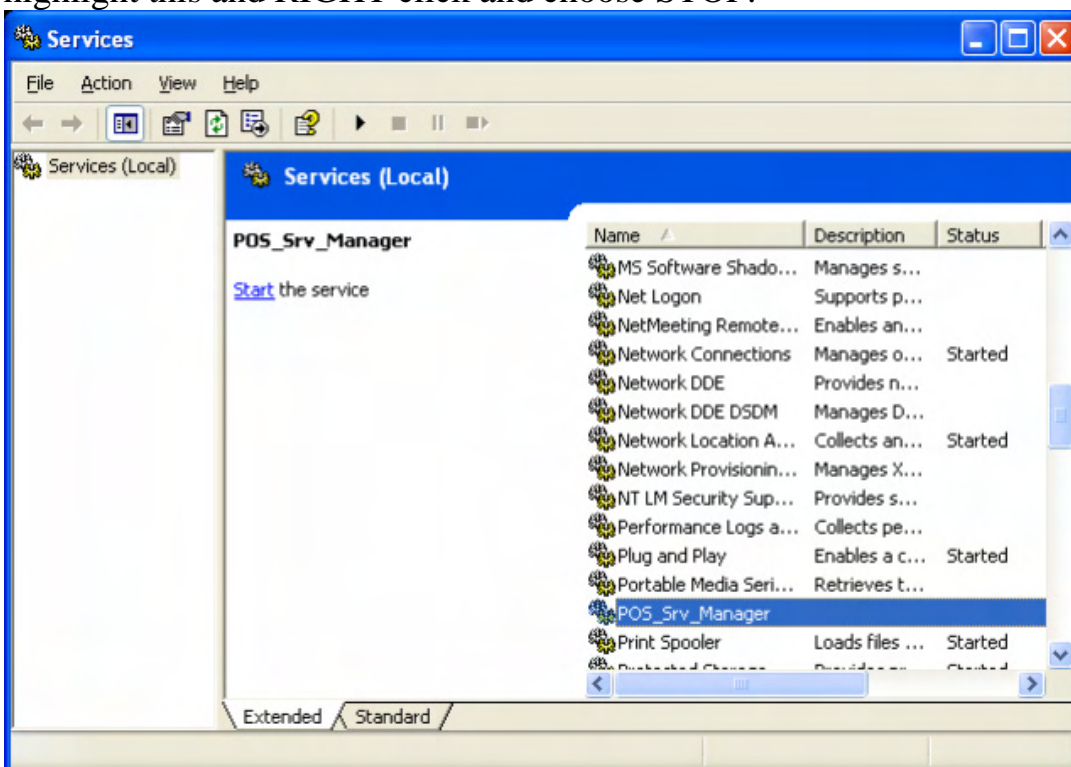
Press Enter on YES, you are sure.



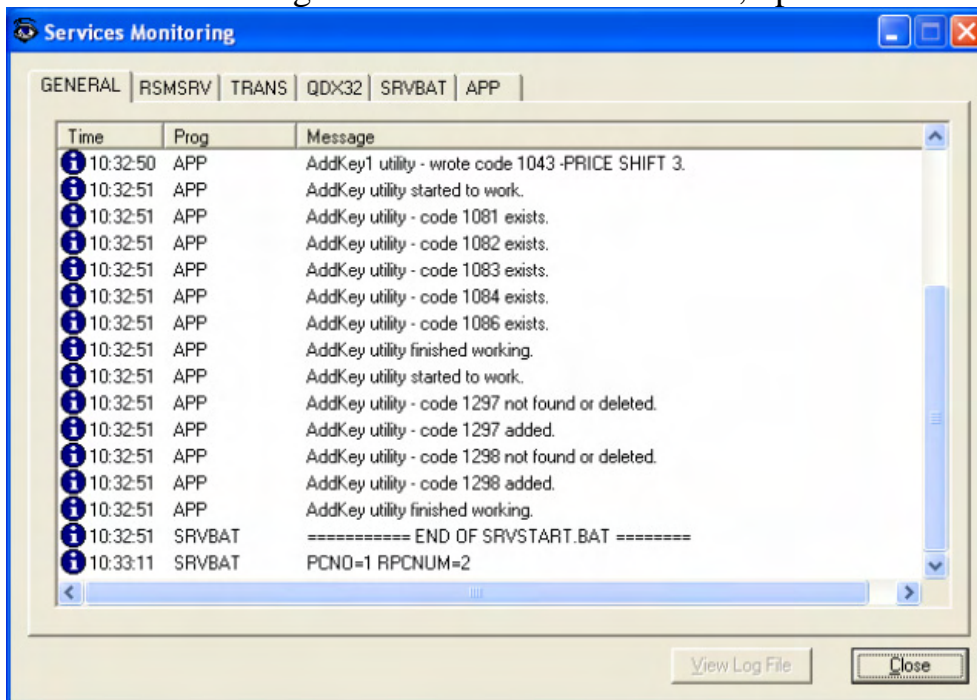
At the DOS Pcmaster prompt, type in exit and press Enter.



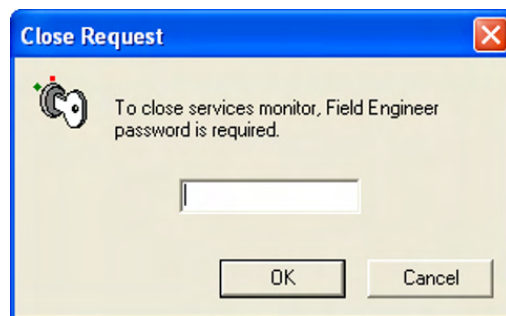
You will need to STOP the POS\_SRV\_MANAGER and Close the Services Monitoring window. From the Desktop, go to Control Panel, Open Administrative Tools, open Services. Scroll to POS\_SRV\_MANAGER, highlight this and RIGHT click and choose STOP.



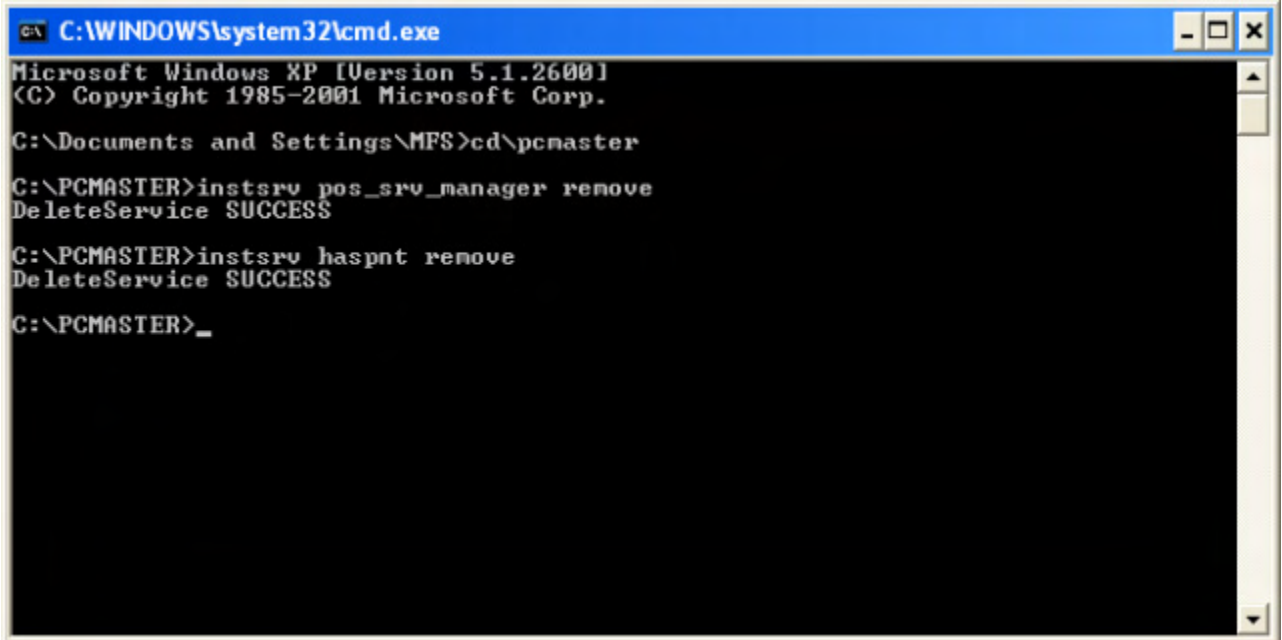
After the Services have stopped, close this screen. You should see the Services Monitoring in the task bar at the bottom, open this window.



Click the X in the top right corner. You will be prompted for a password to close this window.



From the Desktop, click Start/Run and type in CMD and click OK. This will take you to a command prompt outside of the ISS45 program. Change to the pcmaster directory and type in the following as shown in the example. Press Enter after each entry. When you see both services have deleted successfully, type in exit and press Enter to exit the DOS screen.



```
C:\WINDOWS\system32\cmd.exe
Microsoft Windows XP [Version 5.1.2600]
(C) Copyright 1985-2001 Microsoft Corp.

C:\Documents and Settings\MFS>cd\pcmaster

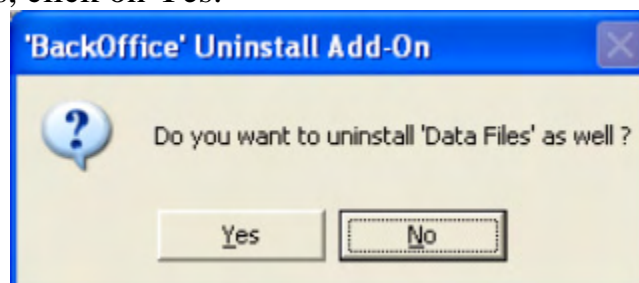
C:\PCMASTER>instsrv pos_srv_manager remove
DeleteService SUCCESS

C:\PCMASTER>instsrv haspnt remove
DeleteService SUCCESS

C:\PCMASTER>_
```

instsrv pos\_srv\_manager remove -> press enter  
instsrv haspnt remove -> press enter

From the Desktop, go back to Control Panel to Add/Remove Programs. Remove the ISS45 Back Office Application. You will be prompted to Remove Data Files, click on Yes.



After ISS45 has been uninstalled from the computer, verify that the Pcmaster folder is gone from the root drive, empty the recycle bin and reboot. You have successfully uninstalled the ISS45 program.

## Recovering ISS45

If you are uninstalling ISS45 because of problems and you wish to Reinstall the application, you should save off some files that will be important to the customer.

The Pcmaster\BAK folder

The Pcmaster\FILES folder

The Pcmaster\HISTORY folder

These 3 folders are history, reports, transaction files, etc.

The Pcmaster\QDX folder is the set of QDX files that run the ISS45 program. You will most likely want to save these as well.

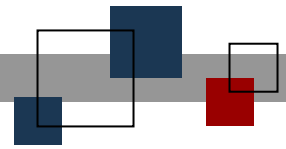
Once you install the program again, there are 2 files you MUST copy into the Pcmaster folder so that file sizes will remain the same and the POST will recognize the server. BOTH of these files go into the Pcmaster folder and may be read only. Take necessary steps to copy read only files into the folder.

q-dex.prm – file sizes

transver.prm – transaction version number. POST need to see this in order to prevent a refresh at the lane.

Once you have ISS45 loaded, choose NO to not reboot at that time. Copy in the q-dex.prm, the transver.prm and copy the necessary folders back into place. Boot the computer and ISS45 will come back up as it was before.





**© StoreNext Retail Technologies LLC 2008**

StoreNext Retail Technologies LLC endeavors to ensure that the information in this document is correct and fairly stated but does not accept liability for any error or omission.

The development of StoreNext products and services is continuous and published information may not be up to date. It is important to check the current position with StoreNext. This document is not part of a contract or license save insofar as may be expressly agreed.