



- *ISS45 Mobile Computing*
- *Installation and Configuration Guide*
-
-
-

ISS45 Mobile Computing Installation Guide

Date of Issue	Product Identification Number	Part Number	Brief Description
June 2001	45001/053	89000079	Initial Release
November 2001	45001/053	89000091	Revision 2
November 2001	45001/053	89000092	Revision 3
August 2002	45001/053	89000104	802.11b Products

**Copyright® StoreNext Retail Technologies LLC 1995-2002
All rights reserved**

This publication is protected by federal copyright law into any human or computer language in any form or by any means, electronic, mechanical, magnetic, manual. No part of this publication may be copied or distributed, stored in a retrieval system, or translated or otherwise, or disclosed to third parties without the express written permission of StoreNext Retail Technologies LLC.

StoreNext Retail Technologies LLC makes no representation or warranties with respect to the contents hereof and specifically disclaims any implied warranties of merchantability or fitness for a particular purpose. StoreNext Retail Technologies LLC further reserves the right to revise this publication and to make changes from time to time in the contents hereof without obligation of Fujitsu Transaction Solutions, Inc. to notify any person or organization of such revision or changes.

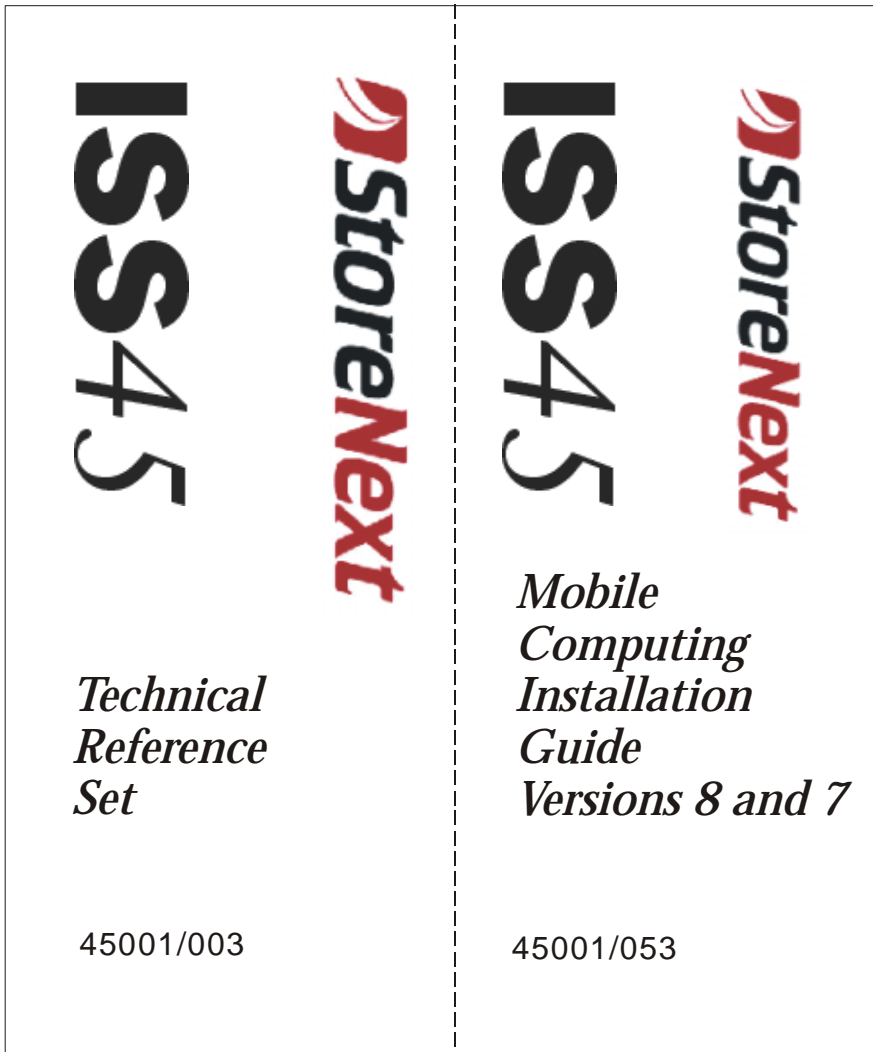
StoreNext Retail Technologies LLC has prepared this manual for use by users, authorized third parties and personnel of StoreNext Retail Technologies LLC as a guide to the proper installation, operation, customization and/or maintenance of StoreNext Retail Technologies LLC equipment and software. The drawings and specifications contained herein are the property of StoreNext Retail Technologies LLC.

Address comments and corrections to:

StoreNext Retail Technologies LLC
ISS45 Program Director
2933 Bunker Hill Lane
Suite 101
Santa Clara, CA 95054

This documentation is designed for placement in a Fujitsu binder that can be ordered separately. To order the binder, contact your sales representative. Indicate PIN 45007/002 and/or part number 80192817.

This sheet contains spine cards that can be used to identify the binder for the appropriate documentation. Cut one of the cards along the dotted lines and insert it in the binder's spine pocket. Discard the remaining cards or save them for later use.



ISS45 Mobile Computing

TP7510-16 With Cisco Access

Installation and Configuration Guide

Using Windows2000 Server, TeamPad
7510-16, Cisco Aironet 350 Series Access
Point and Cisco Aironet 350 Series Wireless
LAN Adapter and QS6000 Scanner

Fujitsu Transaction Solutions Inc.

Table of Contents

Revision Changes	ii
Introduction	1
Windows 2000 Installation	2
TeamPad 7510 rdpuser Setup.....	4
Cisco Aironet 350 Series Access Point and TeamPad 7510 Setup	6
Programming the Access Point.....	7
Take Out What You Need.....	7
Connect and Power Up the Access Point	7
Associate an IP Address with the Access Point	8
Open the Access Point Management Pages.....	11
TeamPad 7510 RF LAN Driver Installation.....	13
TeamPad 7510 Network Configuration	14
QuickScan 6000 Installation.....	18
Appendix A	22

Revision Changes

Initial Release

Introduction

This manual is designed to aid support professionals in configuring and installing the ISS45 Mobile Computing package. Each of these steps has been validated “from scratch” in order to ensure 100% success with this particular set of components. Other similar components, of course, will become available or can be substituted as desired, although these instructions will no longer specifically apply.

The list of fundamental components includes:

- Windows 2000 Server
- TeamPad 7510-16 (PBT7510-16)
- Cisco Aironet 350 Series Access Point (AIR-AP352E2C)
- Cisco Aironet 350 Series Wireless LAN Adapter (AIR-LMC352)
- Type II flash card (PBT3B-064)

The overall installation process consists of the following principal steps. Each is detailed in the sections below:

- Install Windows 2000 Server, configured with Terminal Server capability
- Set up the TeamPad 7510
- Program the Access Point
- Install the LAN drivers for the PCMCIA card in the TeamPad 7510
- Program/configure the network settings in the TeamPad 7510

Windows 2000 Installation

1. Change the computer's BIOS/CMOS setting to allow booting from a CDROM
2. Reboot PC with the Windows 2000 Server CD in the CDROM drive. Windows setup will now load the required files and drivers to support the build.
3. Press [ENTER] to set up Windows 2000.
4. Press [F8] (I agree to License).
5. Press [C] to create a partition on your hard drive.
6. Enter the size of the partition you want to create and press [ENTER]. (e.g., 4095, etc). Suggested minimum size is 4095.
7. Select C: New <Unformatted> partition and press [ENTER].
8. Select "Format the partition using the NTFS file system" if you want extra security on the partition and press [ENTER]. Upon completion of the format the PC will reboot and Windows 2000 setup will select and install devices on your computer.
9. Press [NEXT] on the Regional Settings screen
10. Enter Name and Organization and Press [NEXT].
11. Add your licenses at this screen and press [NEXT] on the Licenses screen.
12. Input computer name and password and press [NEXT] on Administrator Password screen.
13. Select Terminal Services component and press [NEXT] on the Windows 2000 Components screen.
14. Select the time zone and adjust time as required and press [NEXT].
15. Accept the default, Remote administration mode and Press [NEXT] on the Terminal Services Setup window. Windows will now install components based on the configuration you entered.

16. Accept default typical setting and Press [NEXT].
17. Accept the default and type a workgroup or domain name if the computer will be part of a domain and press [NEXT]. Windows will now install components based on the configuration you entered. This will take approximately 10 minutes
18. Press [FINISH]. The computer will automatically restart.
19. Logon as Administrator
20. Select one or more servers are already running in my network. Press [NEXT].
21. Uncheck show this screen at startup and close the screen.
22. You must now go through the steps to set up network addresses. Note: this step assumes only one card is installed on your computer. If there are more network cards, then repeat steps c through f below for each card.
 - a. Right click on "My Network Places" icon on the desktop.
 - b. Select and Click on Properties.
 - c. Double Click on Local Area Connection.
 - d. Click on Properties.
 - e. Highlight Internet Protocol (TCP/IP) and Click on Properties. Insure that the box remains checked.
 - f. Click "Use the following IP address" and key in the IP address, Subnet mask and Default gateway information required for your environment. (e.g., 129.103.10.1 for the IP address if MFS1, 255.255.255.0 for the subnet mask and if applicable set the default gateway address.
 - g. Exit by clicking on [OK], [OK], then [CLOSE].
 - h. Close the Network and Dial-up Connections screen.

TeamPad 7510 rdpuser Setup

1. Create a new user "rdpuser" with a password "rdpuser"
Start / Programs / Administrative Tools / Computer Management / Local Users and Groups
 - a. Expand "Local Users and Groups"
 - b. Right click on Users and select New User.
 - c. Enter rdpuser in User name.
 - d. Tab to password and enter rdpuser.
 - e. Tab to confirm password and enter rdpuser.
 - f. Uncheck "User must change password at next logon"
 - g. Check "User cannot change password".
 - h. Check "Password never expires".
 - i. Click [CREATE] and [CLOSE].
 - j. Close Computer Management window.
2. Log on the server with rdpuser and let the system create the desktop for the rdpuser and then log off.
3. Log back on as the administrator to complete the setup.
4. Change RDP-TCP logon settings to allow auto logon of rdpuser.
Start / Programs / Administrative Tools / Terminal Services Configuration
 - a. Double Click on RDP-TCP connection in the right windowpane.
 - b. Click on the Logon Settings tab.
 - c. Uncheck "Always" prompt for password.
 - d. Click on the Permissions tab.
 - e. Click on Add.

- f. Highlight rdpuser.
- g. Click on Add.
- h. Click on OK.
- i. Check the box for User Access Allow.
- j. Click on OK
- k. Close Terminal Services Configuration window.

Cisco Aironet 350 Series Access Point and TeamPad 7510 Setup

Correct setup consists of the following tasks:

- Configuring the Network Settings
- Changing network settings, access point settings and radio settings
- Configuring Server Settings
- Setting the connect entry to server
- Setting the Terminal Server/Power Saving parameters
- Setting power saving and auto-connect to server parameters

Network settings require the programming of a network number and wireless service set identifier (SSID) into the Access Point and the TeamPad 7510 for proper communication.

Programming the Access Point

Note: The following is extracted from the Cisco AP350 Quick Start Guide.

Take Out What You Need

- Cisco Aironet Access Point
- Cisco Aironet Access Point and Bridge CD with documentation, online Help files, and utilities
- Additional Requirements
 1. A computer that is connected to the same network as the Access Point
 2. Category 5, straight-through Ethernet cable for connecting the Access Point to the network and an inline power source
 3. The MAC address from the label on the bottom of the Access Point (for example: 00409625854c)
 4. The following information from your network system administrator:
 - The (case-sensitive) wireless service set identifier (SSID) for your radio network
 - A unique IP address for the Access Point (for example: 129.103.2.50)

Note Plan to configure the Access Point before mounting it on a pole or ceiling. Some steps, such as those requiring a serial cable, are easier to perform if the Access Point is accessible.

Connect and Power Up the Access Point

- Connect an Ethernet cable to the Ethernet connector on the back of the Access Point
- Connect the other end of the Ethernet cable to the end of a Cisco Aironet power injector labeled To AP/Bridge
- Connect Ethernet cable from the end of the power injector labeled To Network to the 10/100 Ethernet LAN, and plug the power supply into a wall outlet or power strip.

Caution The power injector is designed for Cisco Aironet 350 series Access Points only. Using the power injector with other Ethernet devices can damage the equipment.

Associate an IP Address with the Access Point

To open the Access Point management pages, you need the Access Point's IP address, which can be obtained in one of two ways.

- If your network uses a DHCP server, the server automatically assigns an IP address to the Access Point. Use the IP Setup Utility (IPSU) to identify the assigned address.
- If you are not connected to a DHCP server and the Access Point is on the same subnet as your PC, use IPSU to assign an IP address to the Access Point.

Note You can also identify or set the Access Point's IP address by using a straight-through 9-pin serial extension cable (male on one end and female on the other) to connect the COM1 or COM2 port on your computer to the RS-232 serial port on the Access Point. Use a terminal emulator to view the Access Point's Express Setup screen and write down the IP address. Use these port settings for the terminal emulator session: 9600 baud, 8 data bits, No parity, 1 stop bit, and Xon/Xoff flow control.

Using a DHCP Server

When you connect the Access Point to your network, it receives an IP address from the DHCP server. If you have access to the DHCP server, you can use the management console to identify the IP address for the Access Point. If not, you need to identify the assigned IP address using IPSU. Follow the instructions in the "Finding the DHCP-Assigned IP Address" section later in this document to determine the IP address.

Using the IP Setup Utility

Note You must run IPSU from a computer on the same subnet as the Access Point.

Installing IPSU

1. Put the Cisco Aironet Access Point CD in the CD-ROM drive of the computer you are using to configure the Access Point.
2. Use Windows Explorer to view the contents of the CD. Double-click the IPSU folder; double-click the setup.exe file.
3. Follow the steps provided by the installation wizard.

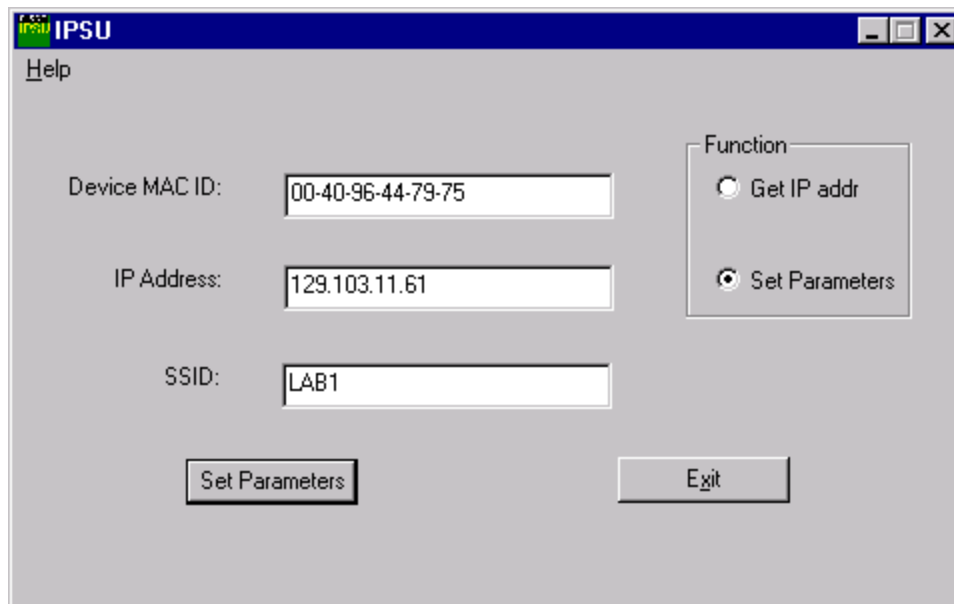
Setting the Access Point's IP Address and SSID

If your Access Point does not receive an IP address from a DHCP server, use IPSU to assign an IP address. You can set the Access Point's SSID at the same time.

Note The computer you use to assign an IP address to the Access Point must have an IP address of its own.

Note IPSU can only change the IP address and SSID from their default settings. After these values have been changed, the utility cannot change them again unless you reset the configuration to factory defaults. To do so, click Reset All System Factory Defaults on the System Configuration Setup page in the Access Point management system.

1. Double-click the IPSU icon on your computer desktop to start IPSU.



2. Make sure Set Parameters is selected in the Function box.
3. In the Device MAC ID field, enter the MAC address as it appears on the label on the bottom of the Access Point. It should contain six pairs of hexadecimal digits separated by periods or dashes. Your Access Point's MAC address might look like this: 00409625854c
4. In the IP Address field, enter the IP address you want to assign to the Access Point. The IP address should be on the same subnet as the device to which you will connect the Access Point.

5. In the SSID field, enter the SSID you want to assign to the Access Point.

Note You cannot set the SSID without also setting the IP address.

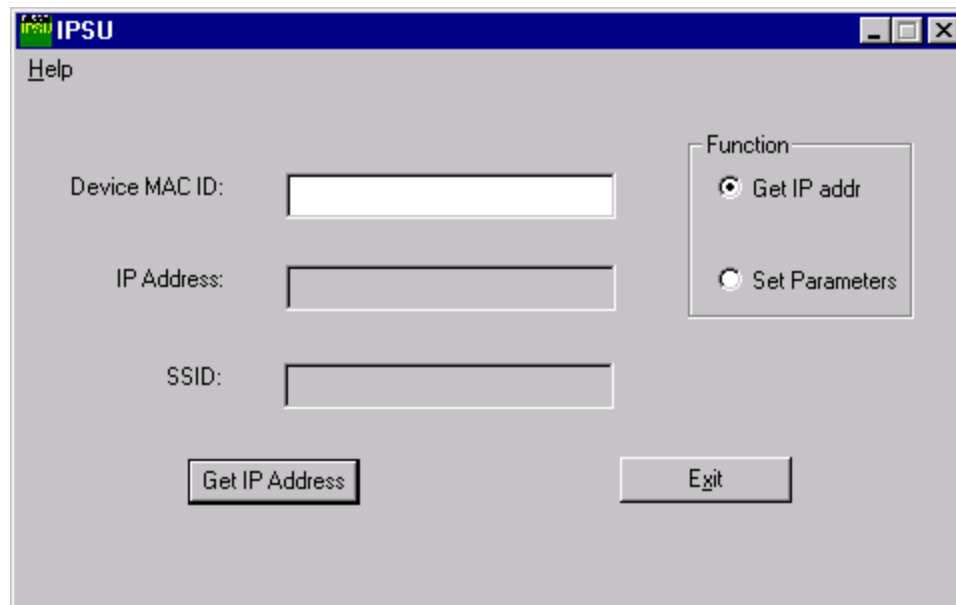
However, you can set the IP address without setting the SSID.

6. Click Set Parameters.

Finding the DHCP-Assigned IP Address

If your Access Point receives an IP address from a DHCP server, use IPSU to determine the IP address.

1. Double-click the IPSU icon on your computer desktop to start IPSU. The following screen appears:



Note The values entered in the screen above are examples only. These values will not work for your configuration.

2. In the Device MAC ID field, enter the MAC address as it appears on the label on the bottom of the Access Point. It should contain six pairs of hexadecimal digits separated by periods or dashes. Your Access Point's MAC address might look like this: 00409625854c
3. Make sure Get IP addr is selected in the Function box; click Get IP Address.
4. Write down the number that is displayed in the IP Address field. If IPSU reports that the IP address is 10.0.0.1, the default IP address, then

the Access Point did not receive a DHCP-assigned IP address. Follow the instructions in the “Setting the Access Point’s IP Address and SSID” in the prior section to set the IP address.


Open the Access Point Management Pages

After you have determined or assigned the Access Point’s IP address, you can open the Access Point management pages.

1. Open your Internet browser. You must use Microsoft Internet Explorer or Netscape Navigator/Communicator, versions 4.0 or later.
2. Enter the Access Point’s IP address in the browser address line and press Enter. Depending on the method used to assign the IP address, either the Summary Status screen or the Express Setup screen opens. From the Summary Status (Home) screen, click Setup and Express Setup to open the Express Setup screen shown below:

AP350-447975 **Express Setup**

Cisco 350 Series AP 11.05



Uptime: 00:12:02

[Home](#) [Map](#) [Help](#)

System Name:	<input type="text" value="AP350-447975"/>
MAC Address:	00:40:96:44:79:75
Configuration Server Protocol:	<input type="text" value="DHCP"/>
Default IP Address:	<input type="text" value="167.158.2.138"/>
Default IP Subnet Mask:	<input type="text" value="255.255.255.0"/>
Default Gateway:	<input type="text" value="167.158.2.1"/>
Radio Service Set ID (SSID):	<input type="text" value="LAB1"/>
Role in Radio Network:	<input type="text" value="Access Point/Root"/>
Optimize Radio Network For:	<input checked="" type="radio"/> Throughput <input type="radio"/> Range <input type="radio"/> Custom
Ensure Compatibility With:	<input type="checkbox"/> 2Mb/sec Clients <input type="checkbox"/> non-Aironet 802.11
SNMP Admin. Community:	<input type="text"/>

[\[Home\]](#)[\[Map\]](#)[\[Login\]](#)[\[Help\]](#)

Cisco 350 Series AP 11.05 © Copyright 2000 Cisco Systems, Inc. [credits](#)

3. Enter the case-sensitive SSID provided by your system administrator, if not already entered using IPSU. Click Apply.

Note: Your Access Point is now up and running with minimum settings.

For more in-depth configuration, if required (e.g., encryption), consult the software configuration guide on the Cisco CD for a description of the Access Point system management functions and instructions for accessing the Help.

TeamPad 7510 RF LAN Driver Installation

The following instructions describe the procedures to install the radio frequency LAN drivers on the TeamPad 7510 Thin Client device. In order to complete this process, you need to have access to a computer (desktop or laptop) with an attached PCMCIA drive or slot. You also need an ATA Flash card and the Cisco1.4.zip file provided or available on the ISS45 Support Web Site.

Initializing TeamPad 7510

1. Initialize system

Note This step is not required if unit is just out from BOX and NO RF installation has been performed previously.

- a. Turn on unit by pressing [PWR] button
Keep pushing [PWR] button until Green LED on left side [PWR] button lights up
- b. Push [SYS], [FUNC] button and touch panel before screen turns on.
Keep pushing above two keys and touch panel until "Fujitsu TeamPad SetUp Tool For WindowsCE" message comes out on top side on screen and release these keys and touch panel.
 - Setup Menu is displayed on screen
- c. Push [Initialize the system] button
 - [Initialize all] is displayed
- d. Push [Yes] button on Initialize
 - [Initialize the system] window is displayed
- e. Push [OK]
 - Unit is automatically turned off

2. Installation of Cisco RF driver

- a. Prepare ATA PCMCIA card
 - i. Ensure the power is off at the desktop or laptop being used to prepare the ATA PCMCIA card
 - ii. Install the Flash card in your desktop or laptop then power on
 - iii. Unzip the file Cisco1.4.zip if provided to a folder named CiscoDrivers. (This file is also available on the ISS45 Support Web Site)
 - iv. Copy the following files, which were unzipped to the CiscoDrivers folder above, to the root directory of the ATA PCMCIA card

- Rfinst.hht
 - CISCO.REG
 - CISCO.DLL
 - Aironet Client Utility.exe
 - Cisco Link Status.exe
 - Client Encryption Manager.exe
 - Client Statistics Utility.exe
 - Site Survey Tool.exe
 - mfcce211.dll
- v. Shutdown your desktop or laptop and remove the Flash card
- b. Install RF driver to TP7510
 - i. Insert the ATA PCMCIA card into the PCMCIA slot of the TP7510 unit. If an RF card occupies the PCMCIA slot, remove the RF card and insert the ATA PCMCIA card.
 - ii. Turn on unit by pressing [PWR] button
Keep pushing [PWR] button until Green LED on left side [PWR] button lights up
 - [Setup] window is displayed
 - iii. Push [FUNC] and [-] button at the same time
 - [Install RF-LAN driver] window is displayed
 - iv. Push [Yes] button on [Install RF-LAN driver]
 - RF driver installation is performed and "Completing the RF-LAN driver install" message is displayed.
 - v. Push [OK] button
 - Unit is automatically turned off.
 - c. Remove the ATA PCMCIA Card and install the Cisco Aironet 350 series Wireless LAN Adapter in the TP7510 then attach the antenna wires to the card.

TeamPad 7510 Network Configuration

1. First time starting up TP7510 after drivers installed
 - a. Turn on unit by pressing [PWR] button
Keep pushing [PWR] button until Green LED on left side [PWR] button lights up
 - b. Setup window displays with message [Perform System Setup Function Now].
 - c. Push [FUNC] and [-] button at the same time
 - d. The calibration screen appears

- i. Touch the points on the screen and then push [SYS] key to save
- e. RDP Installer window displays with message [Do you want to change settings?]
- f. Click [Yes]
- g. Double Tap Network ICON
 - i. Click on Adapters tab
 - ii. Highlight Cisco1: Cisco Wireless LAN Adapter
 - iii. Click Properties
 - iv. Click the IP Address tab
 - v. Click the bullet to specify an IP address (this procedure assumes no DHCP server is being used)
 - vi. Set the IP address of the TeamPad7510 (e.g., 129.103.12.50)
 - vii. Set the subnet mask (e.g., 255.255.255.0)
 - viii. Click the Name Servers tab. Everything should be blank
 - ix. Click OK in upper right of window
 - x. Click OK again
 - xi. Click identification tab
 - xii. Leave setting blank
 - xiii. Click OK in upper right of window
 - xiv. Close the Control Panel by clicking File then Close
- h. RDP Installer window displays with message [Do you want to create new server entry?]
- i. Click [Yes]
- j. Warning screen displays with message Invalid device name
- k. Click [Yes] to set a device name
 - i. Set a device name (e.g., TP7510a, TP7510b, etc)
(Screen Keyboard can be invoked by pressing [SYS] + [+])
 - ii. Click OK in upper right of window
 - iii. Enter name: fht1
(Screen Keyboard can be invoked by pressing [SYS] + [+])
 - iv. Server: IP address of the server
 - v. Low Speed Connection Box: Unchecked
 - vi. Click Next
 - vii. Check Automatic Logon
 - viii. Username: rdpuser
 - ix. Password: rdpuser
 - x. Domain: (Your workgroup name)
 - xi. Click Next
 - xii. Check bullet for Desktop
 - xiii. Click Next
 - xiv. Click Finish
- l. RDP Installer window displays with message [Do you want to create backup server entry?]

- m. Click [No]
- n. RDP Installer window displays with message [Do you want to change settings for serial port mapping?]
- o. Click [Yes]
 - i. Click [Primary] tab
 - ii. Check Enable box for COM-LAN
 - iii. Set Port for COM-LAN to 8000
 - iv. Set Connect Timeout to 20 sec.
 - v. Check enable box for broadcast connection
 - vi. Click OK in upper right window corner
- p. RDP Installer window displays with message [Do you want to save changes?]
- q. Click [Yes]
 - Unit is automatically turned off.

2. How to execute Setup menu after first start up

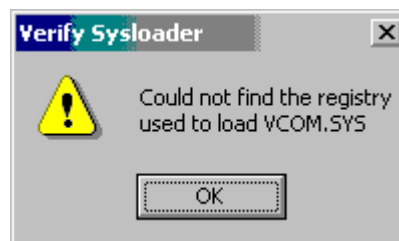
- a. Turn on unit by pressing [PWR] button
Keep pushing [PWR] button until Green LED on left side [PWR] button lights up
- b. Push [SYS], [FUNC] button and touch panel before screen turns on.
Keep pushing above two keys and touch panel until "Fujitsu TeamPad Setup Tool For WindowsCE" message comes out on top side on screen and release these keys and touch panel.
➤ Setup Menu is displayed on screen
- c. Configuration tool
 - i. Push [RUN] Button on SetUp Menu
 - ii. Push [Browse..]
 - iii. Double Tap Windows folder on list
 - iv. Double Tap "Aironet Client Utility.exe" on list
➤ Run Windows is displayed with "\Windows\Aironet Client Utility.exe" name.
 - v. Push OK button
➤ ACU(Configuration tool) window is displayed on screen
 - vi. Select the property and enter values
➤ SSID set to the same value used on the Access Point (Screen Keyboard can be invoked by pressing [SYS] + [+]).
Leave all other values at their defaults
 - vii. Push [OK] on ACU window after completion of setting.
 - viii. Push [Cancel] on Run Window to return to the Setup Menu.
- d. Site Survey tool (use this to check signal strength and quality)

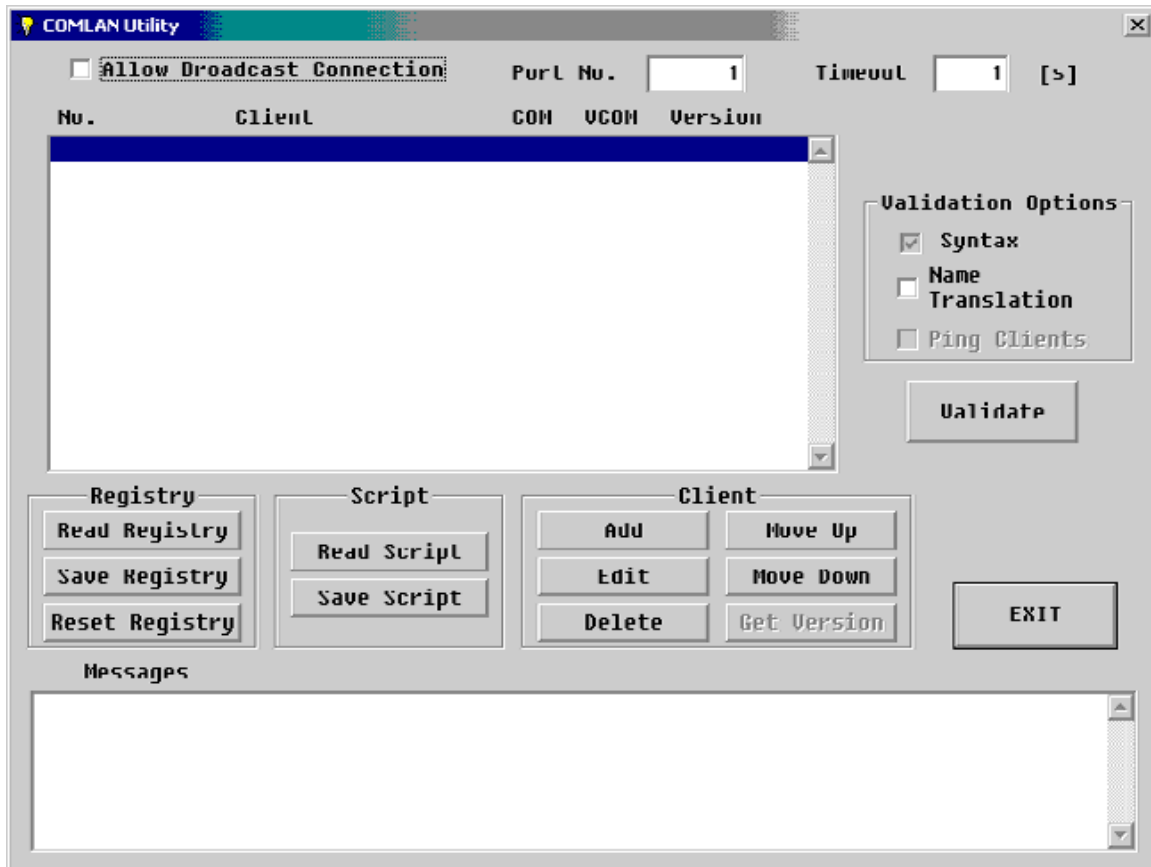
- i. Push [RUN] Button on SetUp Menu
 - ii. Push [Browse..]
 - iii. Double Tap Windows folder on list
 - iv. Double Tap "Site Survey Tool.exe" on list
 - Run Windows is displayed with "\Windows\Site Survey Tool.exe" name.
 - v. Push OK button
 - Site Survey tool is displayed on screen
 - vi. Push [OK] on Site Survey ACU to close Site Survey window
 - vii. Push [Cancel] on Run Window to return to the Setup Menu.
 - e. Client Encryption Manager (Use this if Encryption is being used on the Access Point)
 - i. Push [RUN] Button on Setup Menu
 - ii. Push [Browse..]
 - iii. Double Tap Windows folder on list
 - iv. Double Tap "Client Encryption Manager.exe" on list
 - Run Windows is displayed with "\Windows\Client Encryption Manager.exe" name.
 - v. Push OK button
 - Client Encryption Manager is displayed on screen
 - vi. Enter Password (Default is "Cisco", case sensitive) and Push OK
(Screen Keyboard can be invoked by pressing [SYS] + [+]).
 - vii. Input Encryption Keys
 - viii. Push [OK] on CEM window after completion of setting or Push [Cancel] if not using Encryption
 - ix. Push [Cancel] on Run Window to return to the Setup Menu.
3. Close the SetUp Menu
4. Click Yes on [Save setting changes] window. The unit is automatically turned off

QuickScan 6000 Installation

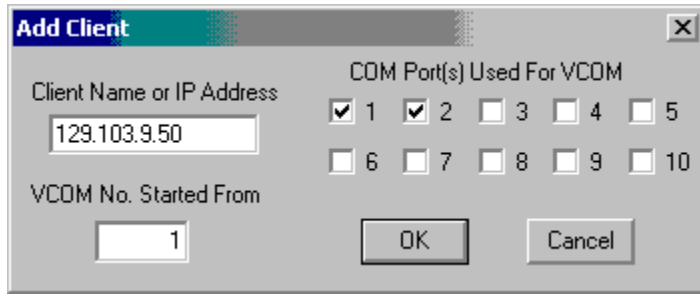
1. Required hardware for this installation is one of the following PINs available from Fujitsu:
 - PBT7X51-03 Handheld Scanner, QS6000 WE/TTL w/Hirose Connector
 - PBT7X51-04 Handheld Scanner, QS6000 WE/TTL w/Hirose Connector and Stand (Note: this stand is probably not useful during remote computing activity.)
2. Software Installation: Current software at this writing is the following:
The Comlan diskette contains: (Must Order PIN PBT7561-25)

Readme.txt	12/04/2000 10:18 AM
Csutil.exe	11/22/2000 5:12 PM
Vcom.sys.	09/28/2000 1:15 PM
Comlanx.exe	09/26/2000 5:47 PM
Shortcut to comlanx.exe.lnk	10/24/2001 4:18 PM
Shortcut to CSUTIL.exe.lnk	10/22/2001 10:59 AM
TSE Shortcut to CSUTIL.exe.lnk	10/26/2001 2:46 PM
Setup.bat	10/26/2001 3:22 PM
Keygen.exe	05/18/2001 1:52 PM
Rtmous95.exe	05/19/1997 4:28 PM
3. On the Windows 2000 Server, run setup.bat from the floppy disk. This installs the Comlan software and adds the Comlanx and Csutil shortcuts to the server desktop.
4. Right click on Start with mouse
5. Open All Users → Programs folder → Startup folder
6. Cut and paste the "shortcut to Comlanx.exe" on the server desktop into the Startup folder opened above
7. Create shortcuts in the rdpuser startup group (C:\Documents and Settings\rdpuser\Start Menu\Programs\Startup) that point to C:\winnt\rtmous95.exe and c:\winnt\keygen.exe
8. Configure Comlan by clicking the shortcut for csutil on the server desktop. The first time it is run you will get the two following errors:

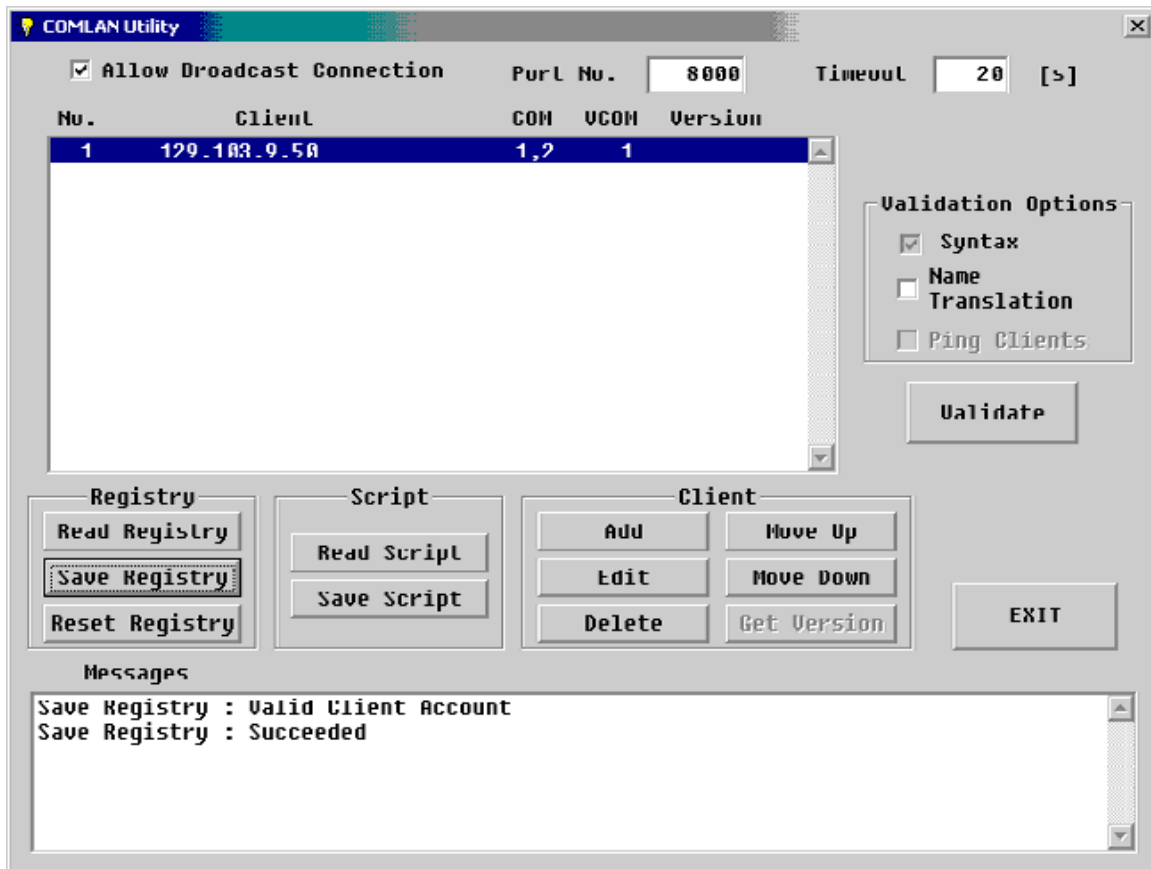




- a. Check the box next to Allow Broadcast Connection
- b. Set Port No. to 8000
- c. Set time out for 20
- d. Click the [Add] button under Client



- a. Insert your TP7510 IP address in the box
- b. Check both 1 and 2 for COM Ports User for VCOM
- c. Insert 1 in the box VCOM No. Started From
- d. Click on the [OK] button
- e. Click on the save registry under the registry column
- f. Click [EXIT] to end program.
- g. Reboot the PC after making changes.



9. Logon to the server after the restart.
10. Power on the TP7510 with the Quickscan6000 connected. You should get (4) beeps when the scanner is working.
11. Use the QuickScan6000 Handheld Laser Scanner Programming Guide to program the scanner. Note: Suggested Labels are in Appendix A.

Appendix A

Factory default label



Set label



Disable Label I.D. Control



UPC-E to UPC-A Expansion



EAN-8 to EAN-13 Expansion



Don't Send Check Digit for UPC-A



End



© StoreNext Retail Technologies LLC 2002

Fujitsu Transaction Solutions, Inc. endeavors to ensure that the information in this document is correct and fairly stated but does not accept liability for any error or omission.

The development of Fujitsu Transaction Solutions products and services is continuous and published information may not be up to date. It is important to check the current position with Fujitsu. This document is not part of a contract or license save insofar as may be expressly agreed.

StoreNext Retail Technologies LLC
2933 Bunker Hill Lane, #101
Santa Clara, CA 95054

P/N 89000104
PIN 45001/053