A decorative graphic on the left side of the page, consisting of a dense cluster of small, blue, stylized icons representing various retail items and services, such as shopping bags, carts, and product containers, arranged in a roughly circular pattern that tapers to the right.

ISS45 Version 8 Installation Guide
NCR 7601/7606 POS Terminals
(RealPOS 60/RealPOS 82XRT)

ISS45 V8 Installation Guide – NCR 7601/7606 POS Terminals

Date of Issue	Product Identification Number	Part Number	Brief Description
April 2013	45001/032	89000760	NCR H/W Release
December 2013	45001/032	89000795	Revision 2
February 2014	45001/032	89000800	Revision 3

**©Copyright Retalix, Inc. 1995-2014
All rights reserved**

This publication is protected by federal copyright law. This document and its contents are the proprietary, confidential information and property of Retalix, Inc. ("Retalix"). Unauthorized disclosure, reproduction, distribution or use of this document and/or its contents in any form is strictly prohibited. No part of this publication may be reproduced or transmitted into any human or computer language in any form or by any means, stored in a retrieval system, transmitted, redistributed, translated or disclosed to third parties, or de-compiled in any way including, but not limited to, photocopy, photograph, electronic, mechanical, magnetic or manual without the express written permission of Retalix or its licensors, if any. This document, notwithstanding the above, may be distributed in electronic or printed form to personnel who are employed by either (1) a Retalix customer of the subject system of this document or (2) personnel from an authorized Retalix Channel Partner of the subject system of this document. All copies, so distributed and/or so authorized, shall contain a full copy of this copyright notice.

Retalix has prepared this manual for use by users, authorized third parties and personnel of Retalix as a guide to the proper installation, operation, customization and/or maintenance of Retalix equipment and software. The drawings and specifications contained herein are the property of Retalix and/or its licensors.

Retalix endeavors to ensure that the information in this document is correct and fairly stated but does not accept liability for any error or omission. Retalix makes no representation or warranties with respect to the contents hereof, and specifically disclaims any implied warranties of merchantability or fitness for a particular purpose or non-infringement. No commitments by Retalix or its suppliers are made by or from this documentation which is provided for information only.

Development of Retalix products and documentation is continuous: Retalix reserves the right to revise this publication and to make changes from time to time in the contents hereof or in the products herein described or discussed without notice and without any obligation of Retalix to notify any person or organization of such revision or changes. Information published in this document will likely become obsolete over time and it is recommended that users regularly check for updates and newer versions.

The trademarks Retalix, StoreNext, ISS45, ScanMaster, R10, PocketOffice, RBO, Connected Payments, Connected Services, Connected Loyalty and all other Retalix product names are registered trademarks or trademarks of Retalix; all other trademarks or registered trademarks are the property of their respective owners. Third-party products, services, or company names referenced in this document may be trademarked or copyrighted by their respective owners, and are for identification purposes only. Copyrights, trademarks and license agreements shall be governed and construed in accordance with the laws of the State of Texas and the Federal Arbitration Act, and shall benefit Retalix, its successors, and assigns.

Address comments and corrections to:

Retalix, Inc.
Software Program Director
797 Commonwealth Drive
Warrendale, PA 15086

Configure Bios and POSReady 7 on the NCR POS 7601 and 7606 for ISS45 V8

Check the BIOS settings to ensure that the LAN Boot ROM is set to Disabled, Boot order default is set to Standard and under Boot Device Priority that the 1st device is set to the HDD. If the LAN boot is enabled, the boot time of the POS will be considerably longer.

The NCR 7601/7606 comes preloaded with POSReady 7 SP1. For the out-of-box setup, only attach the keyboard, mouse and monitor. After initial power on a Set Up Windows screen will appear. Verify or select the correct Country or region, Time and Currency and Keyboard layout. Click Next.

Enter a computer name, i.e., NCR_Lane1. Click Next.

Accept the license terms. Click Next.

Review your time and date settings screen. Select your time zone. Set the date and time.

Windows will now finalize your settings and reboot
The POS will auto login as user NCR and password NCR.

Windows Settings:

Click Start, and type "**secpol.msc**" in the search area and hit Enter. In the left list, select "**Local Policies**", then open "**Security Options**".

In the right pane:

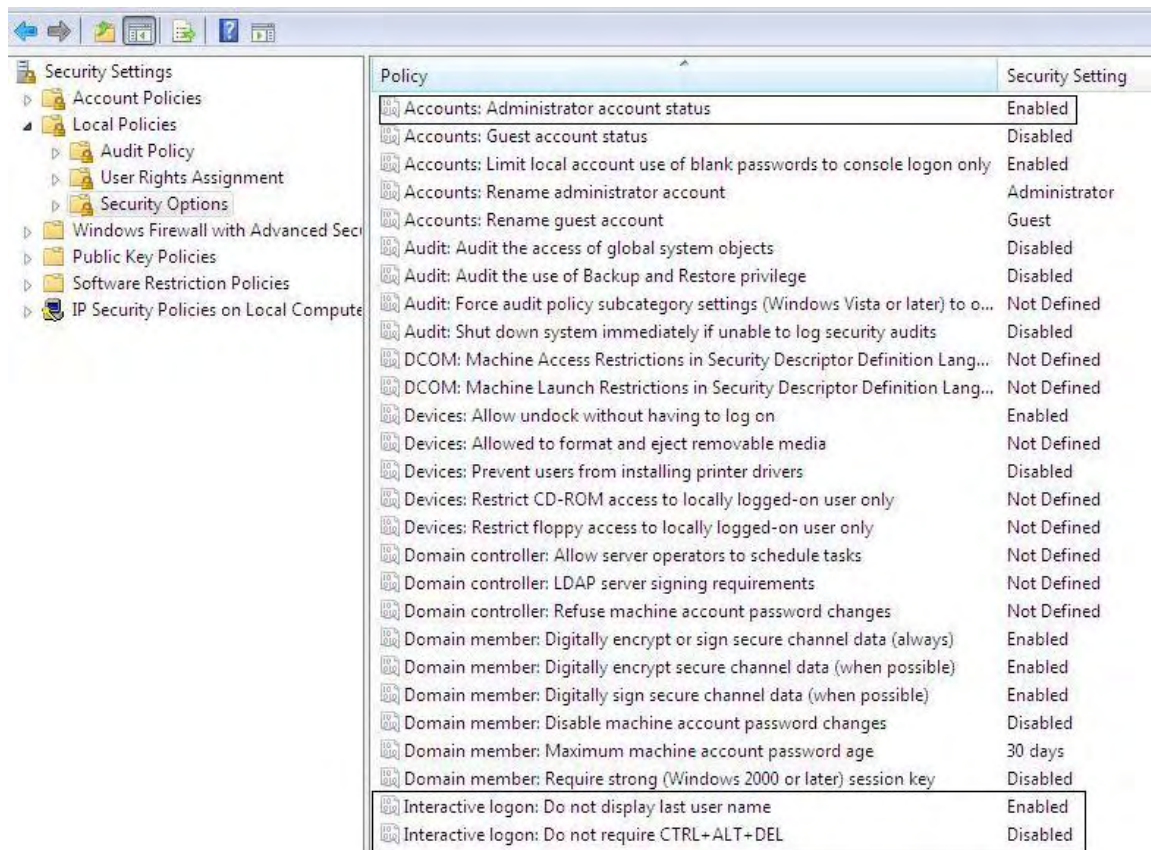
Set "**Accounts: Administrator account status**" to **Enabled**.

Set "**Interactive logon: Do not display last user name**" to **Enabled**.

Set "**Interactive logon: Do not require CTRL + ALT + DEL**" to **Disabled**.

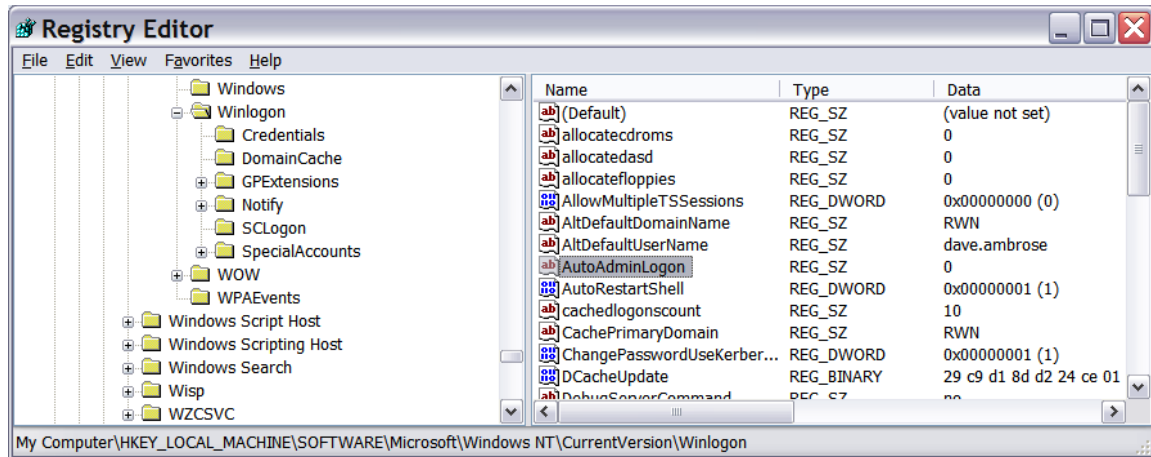
Set "**User Account Control: Admin Approval Mode for the Built-in Administrator account**" to **Disabled**.

Set "**User Account Control: Behavior of the elevation prompt for administrators in Admin Approval Mode to Elevate without Prompting**."



Next double click the User Rights Assignment under Security Settings and double click “**Log on as a service**”, click Add User or Group, type in “Administrator” and click the Check Names button. Click Ok, click Apply (click Ok if an error occurs), click Ok and close secpol.msc.

Disable auto login. Run Regedit and go to
HKEY_LOCAL_MACHINE\Software\Microsoft\Windows
NT\CurrentVersion\Winlogon and set the AutoAdminLogon value to 0.



Log off and log back in as the Administrator (No password required yet).

Setting the Administrator's password.

Click Start and open Control Panel. Change View by: to small icons
Select "User Accounts".

Click "Create a password for your account".

Make the password the same as the administrator password on the Server.

Enter hint if so desired. Click Create password. **Do not forget this password or you may have to reinstall Windows 7!**

You should be back at the "Make changes to your user account" screen.

Close the Control Panel.

Reboot and log back in as the Administrator with the new password.

Click Start and open Control Panel. Change View by: to small icons if not already set.

Under Windows Update.

Click Change Settings.

Click the drop down arrow and select Never check for updates.

Click OK.

Return to the main Control Panel.

Click Power Options.

Click the down arrow by the Show additional plans.

Click High Performance.

Optional – Default settings will cause the monitor to turn off after 15 minutes of inactivity. You can change this by going to Change Plan Setting and adjust display options.

Return to the main Control Panel.

Click Network and Sharing Center.

Click Change adaptor settings.

Right click the Local Area connection and click Properties.

Click the Configure button, verify/set that all options under Power Management are unchecked.

Click OK.

Right click the Local Area connection and click Properties.

Highlight Internet Protocol Version 4 and click Properties. Fill in the IP address information. Click OK. Click Close.

Return to the Network and Sharing Center.

Click Change advanced sharing settings. Ensure that the option Turn on network discovery and Turn on file and printer sharing are turned on. Scroll down and turn off Password protected sharing. Do this for both the Home or Work and Public sections.

Click Save changes.

Return to the Control Panel.

Click Date and Time.

Uncheck Notify me when the clock changes

Return to the Control Panel.

Click Action Center.

Change Action Center settings.

Uncheck any items, i.e. Windows Update, Firewall, etc. that you don't want Windows to pop notification messages. (Recommended to uncheck all)

Click OK.

Return to Control Panel.

Click Windows Firewall.

Click Turn Windows Firewall on or off.

Turn off both private and public firewall options.

Click Ok.

Return to Control Panel.

Click Display.

Select Adjust Resolution and set to 800 X 600 on all monitors.

Click Apply.

Click to keep changes.

Click through warnings.

Click OK

Close the Control Panel.

If the computer name or workgroup name needs changed, click System.

Click Advanced system settings.

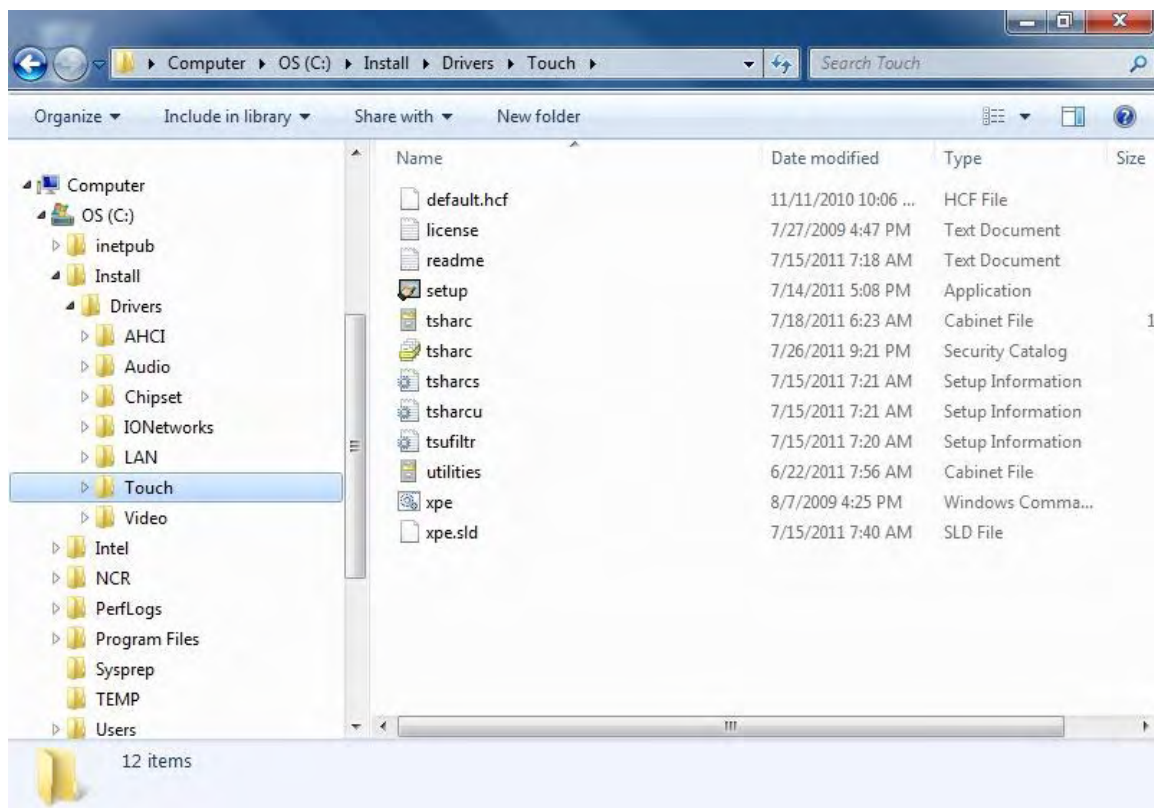
Under the Computer name tab, domain and workgroup settings, click Change setting. If prompted for a reboot, accept and let the system reboot to update its settings.

Note: For security reasons, you may want to delete the NCR users.

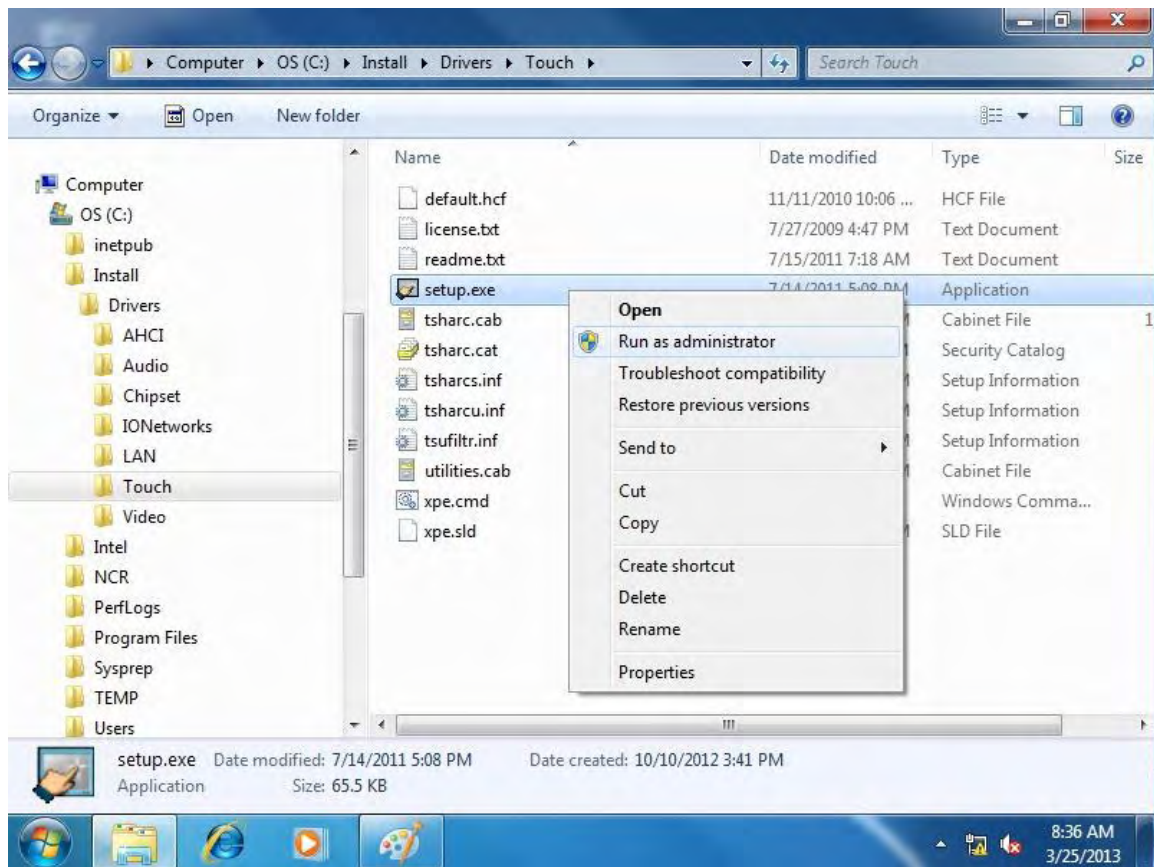
POSReady 7 should now be ready for software installation.

At this point, for touch screens, install the Touch Driver. Else SKIP to “Install NCR Retail Platform Software for Windows (OPOS)” this step if not using Touch Screen.

Explore to C:\Install\Drivers\Touch



Right Click setup.exe and select Run as administrator.



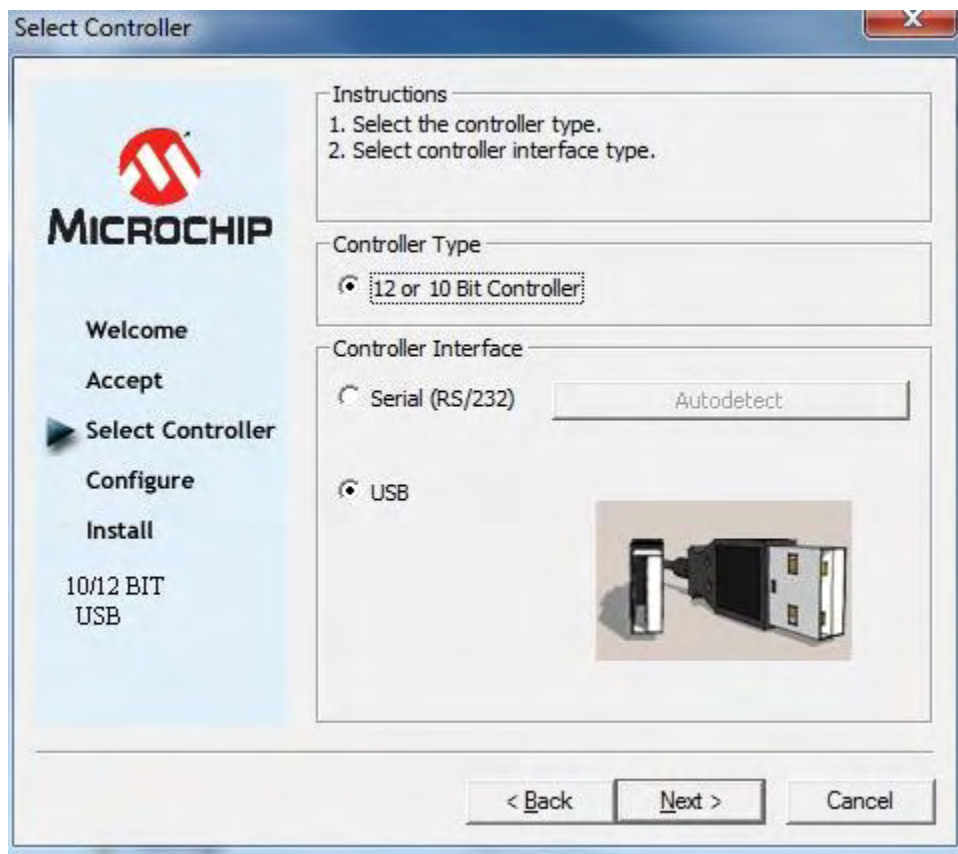
Click Next at the following Welcome screen



Click I accept all of the terms..... and Click Next on the following screen



Click Next on the following Select Controller screen



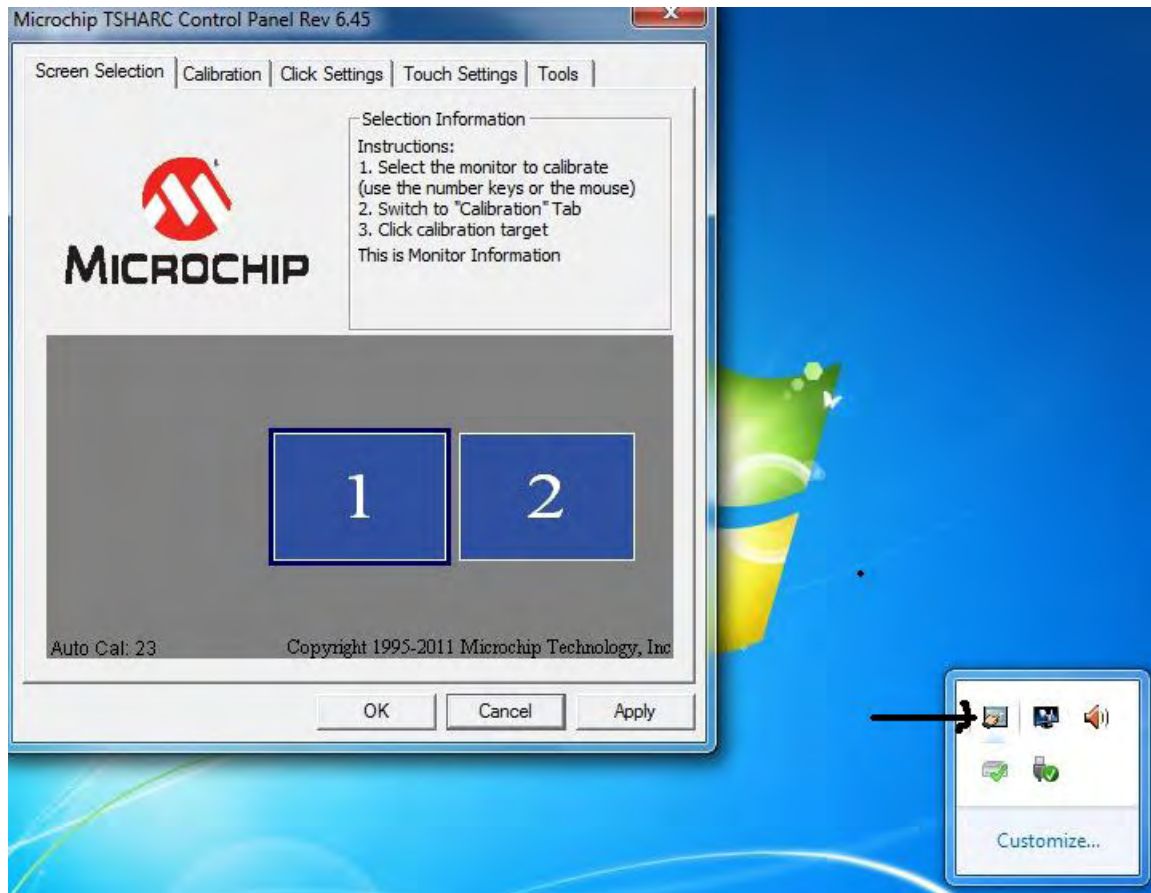
Click Finish on the following Install screen



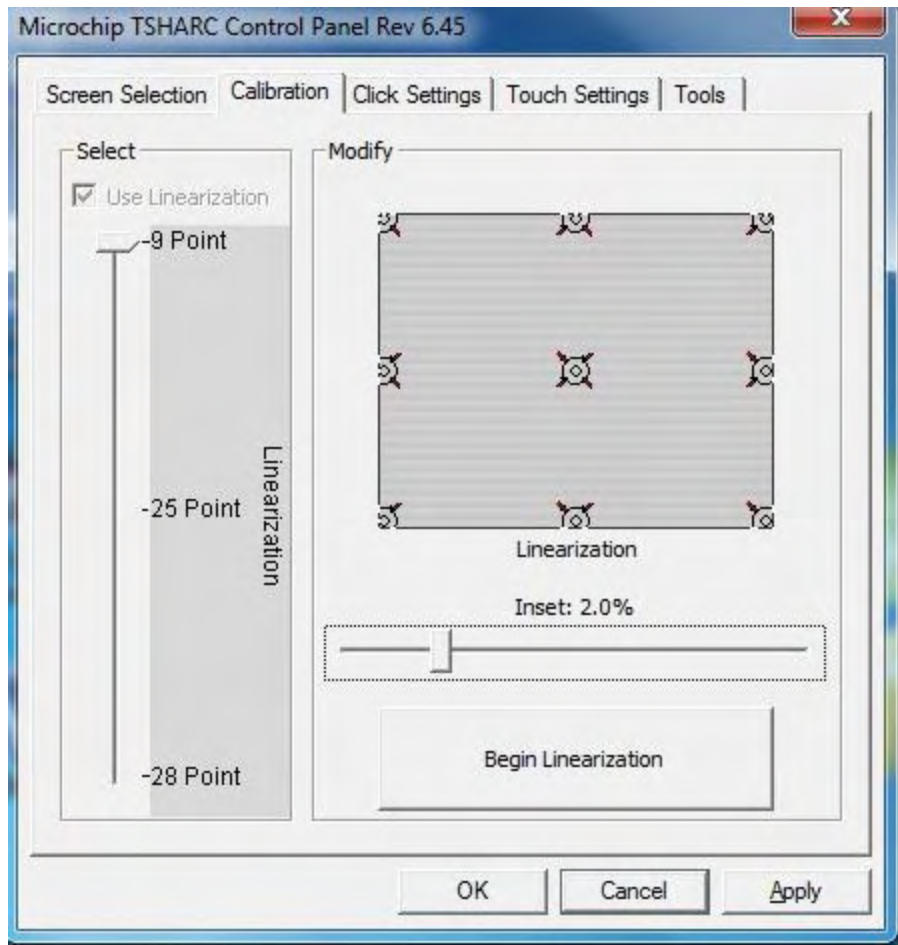
The Touch driver/software will now install.

Click OK at the Setup is now complete message box.

On the right side of the Taskbar select and double click the Display Control Panel icon and select the monitor to be calibrated. If using 2 monitors it will be necessary to calibrate both.



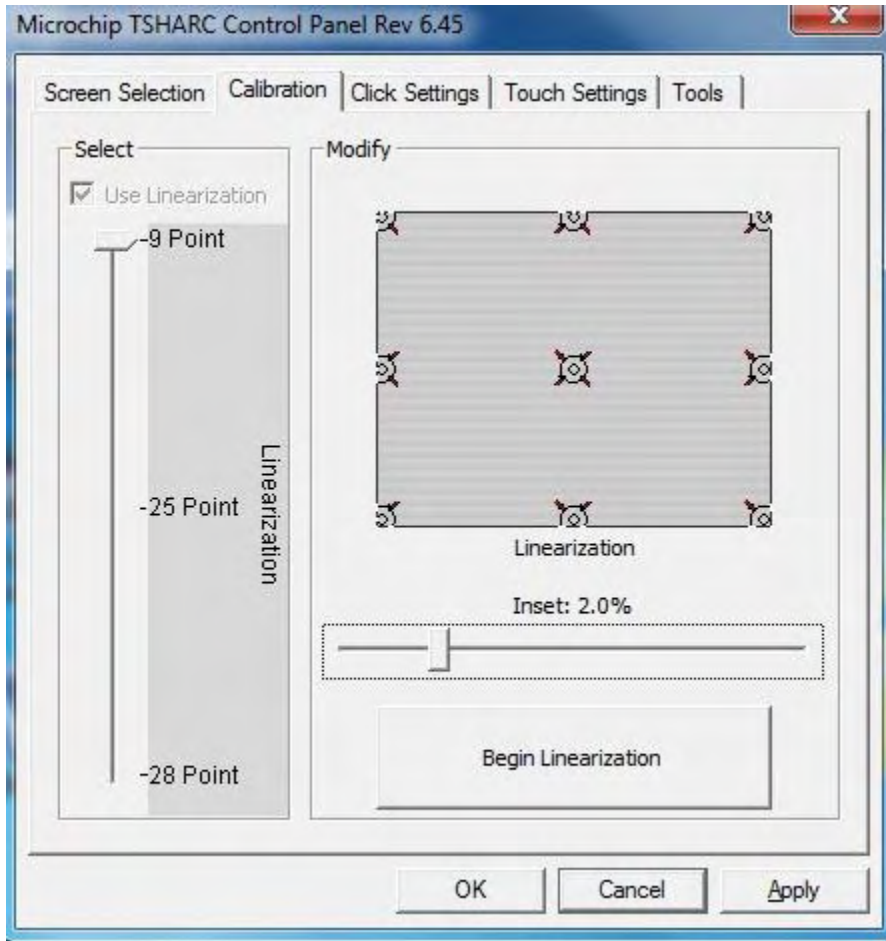
Click on the Calibration tab and on the following screen, Click Begin Linearization



Follow the screen instructions on the following page. BE SURE NOT TO TOUCH THE SCREEN when instructed not to.



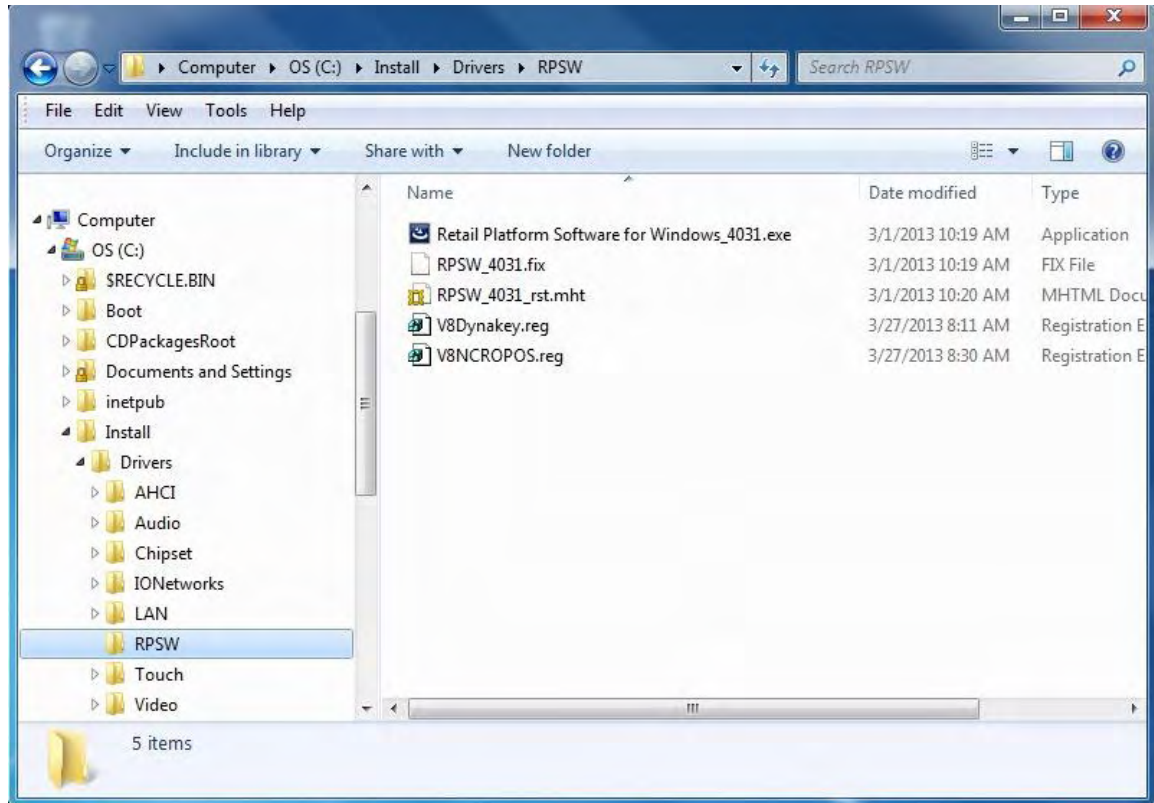
Click Apply and OK on the following screen.



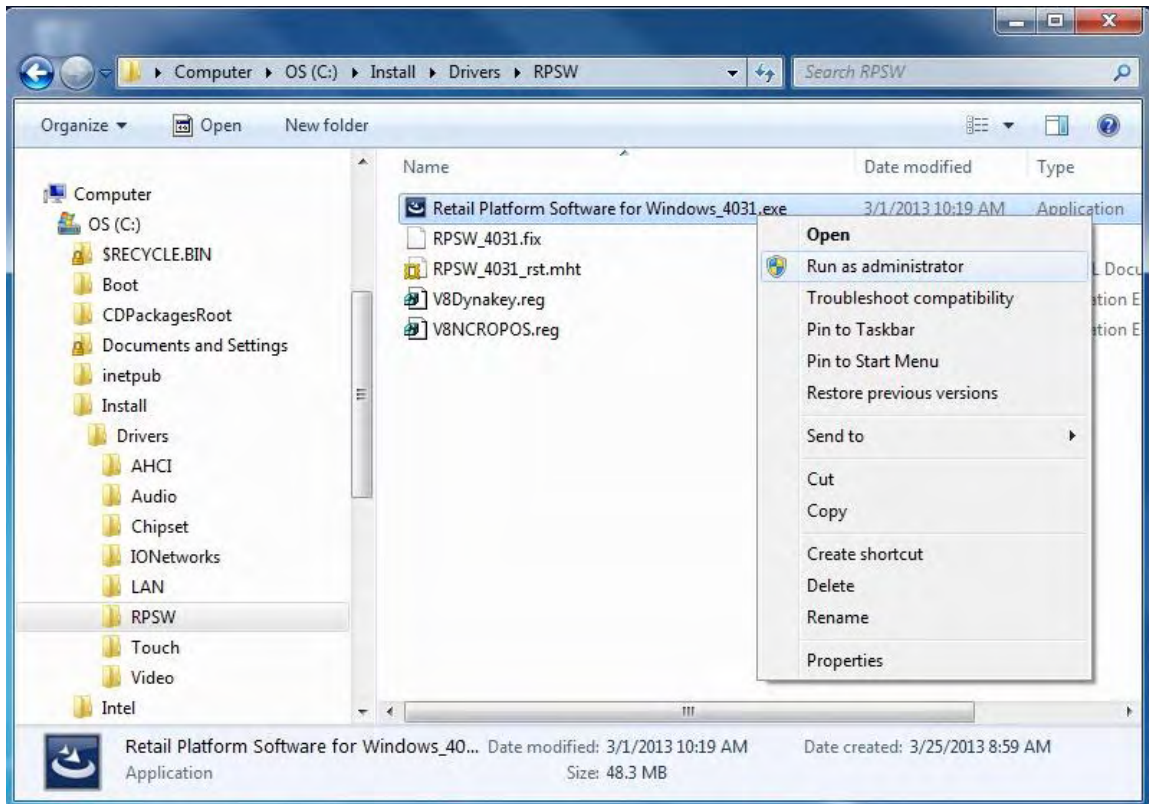
Screen calibration is completed.

Install NCR Retail Platform Software for Windows (OPOS).

Obtain the Retail Platform Software for Windows_4031.exe from the Retail Channel Partners website. Create the folder RPSW under C:\Install\Drivers and copy the install files to that folder. Also download the V8NCROPOS.REG, V8DYNAKEY.REG and USBUtilities.zip files and place them in the RPSW folder as well.



Right Click the Retail Platform Software for Windows_4031.exe and Click Run as administrator.



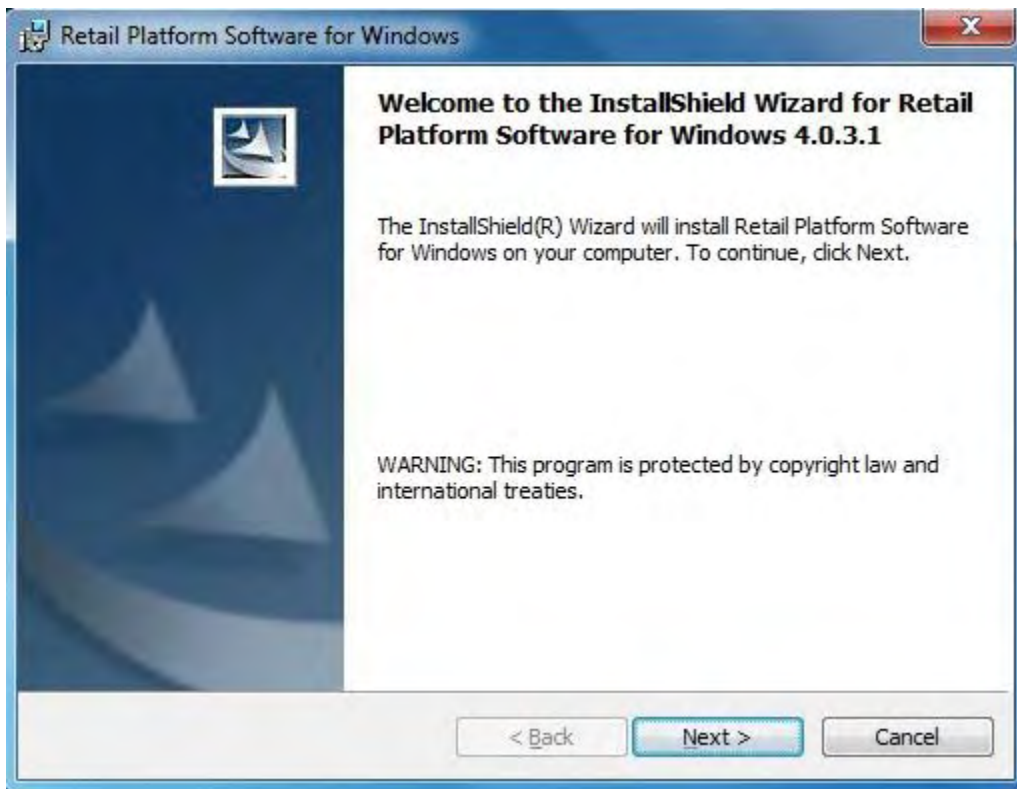
The installation starts.



The machine type is detected. Click Confirm (don't change the other drop downs).



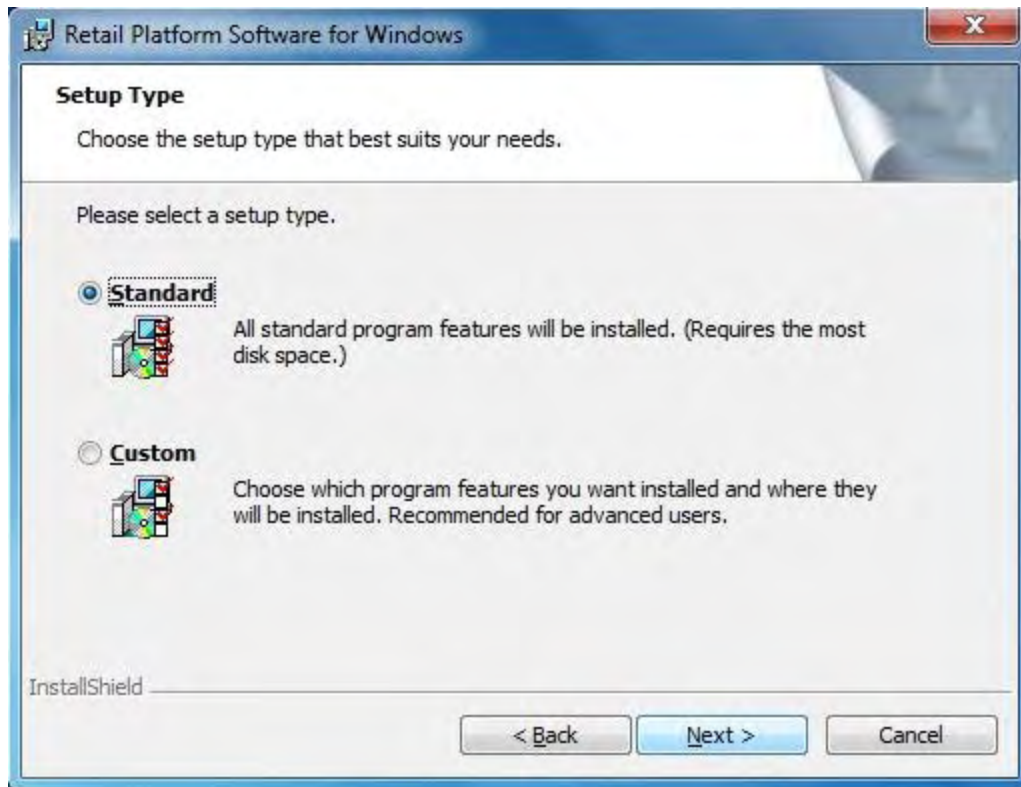
Click Next at the Welcome screen.



Click the I accept the terms box and click Next.



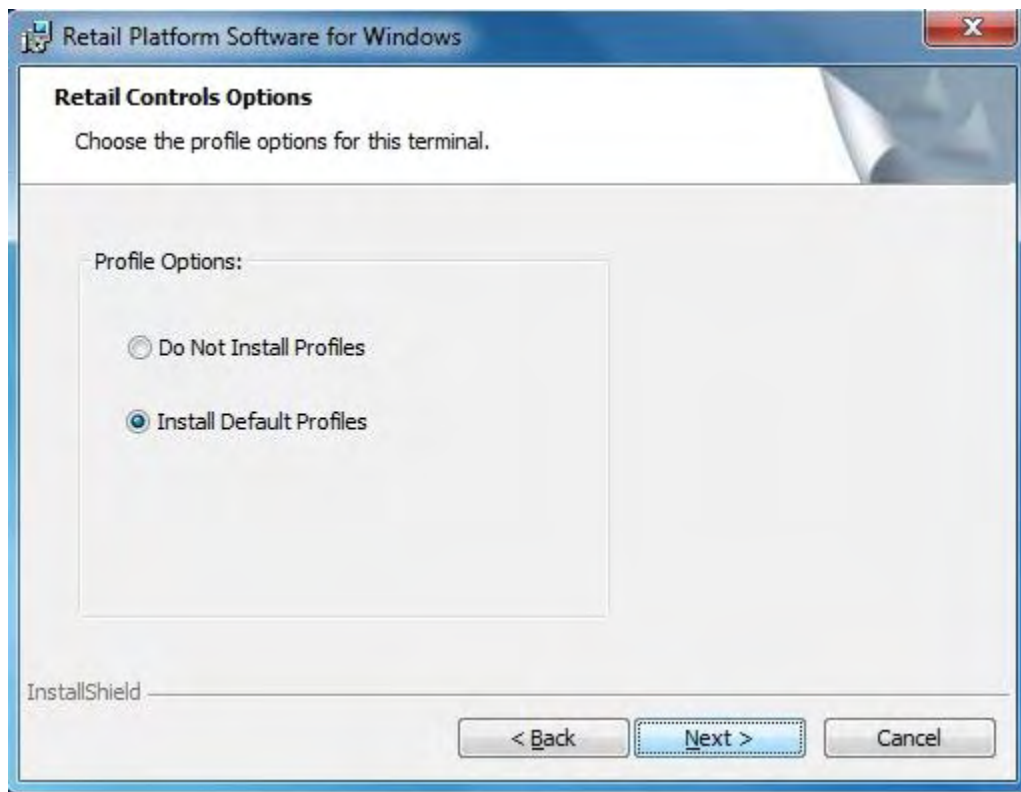
At the Setup Type screen select Standard and Click Next.



At the Control Object Warning screen select OPOS Committee Common Controls and click Next.



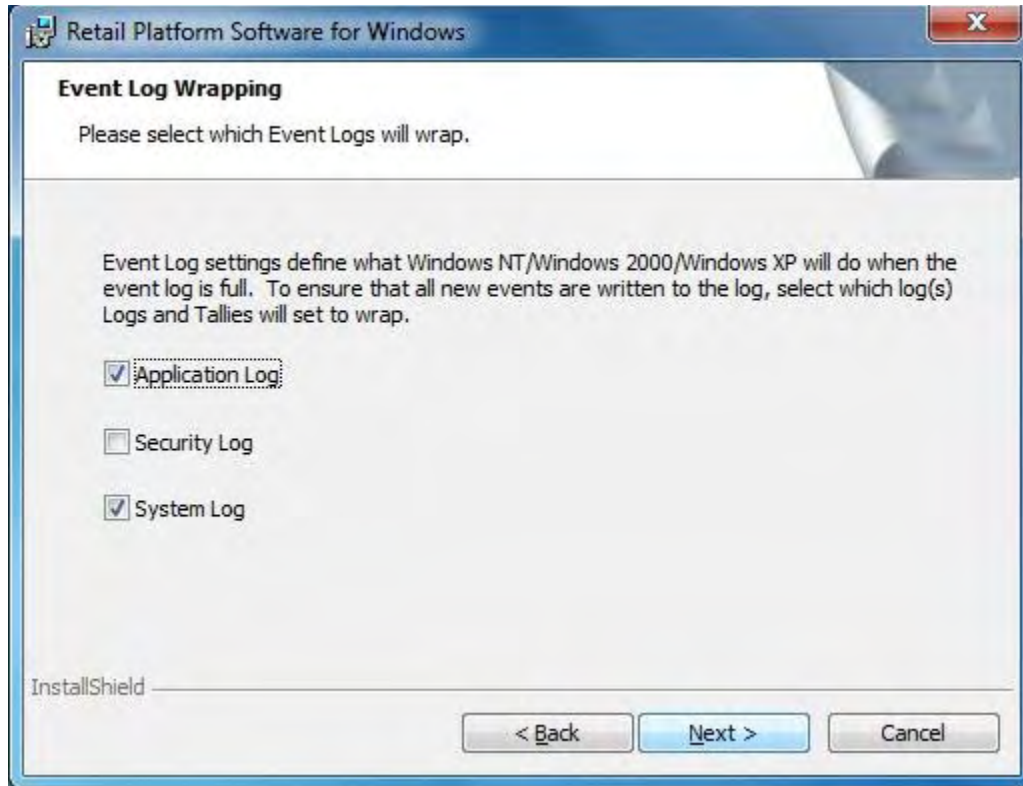
At the Retail Control Options screen select Install Default Profiles and click Next.



At the Retail Systems Manager Options screen select Local Only and click Next unless you are using a RSM server for remote management, in which case chose Managed by RSM Server and answer the additional questions on the screen.



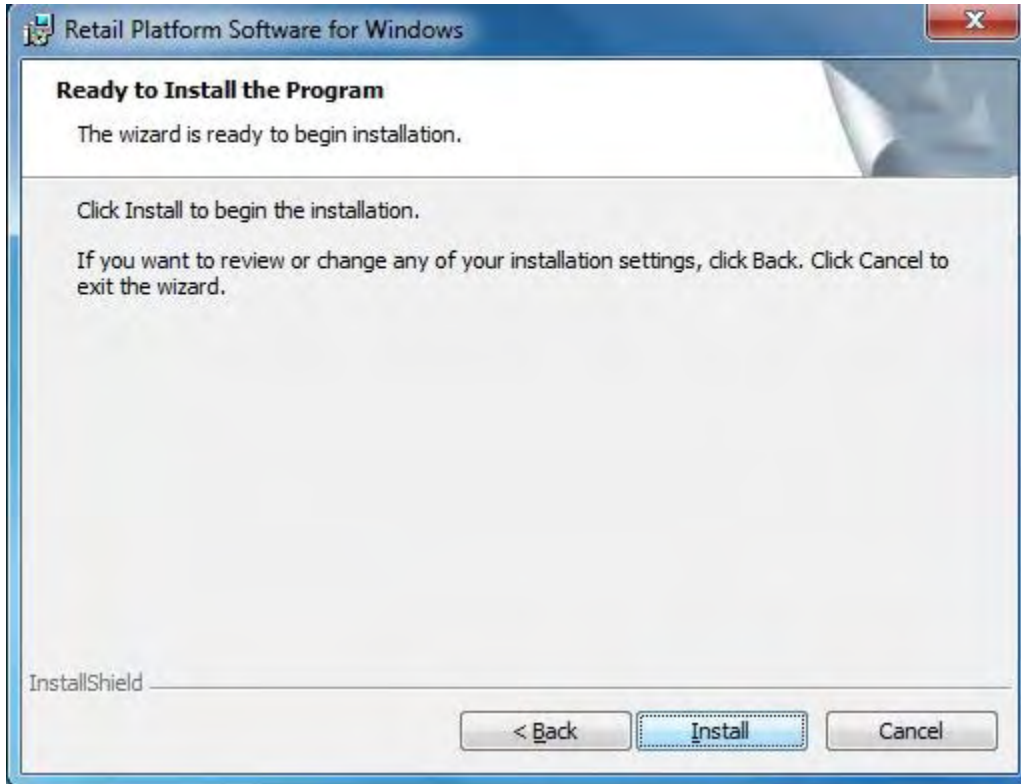
At the Event Log Wrapping screen click Next.



At the Security Setting Options screen select Modify security settings and click Next.



At the Ready to Install the Program screen click Install.

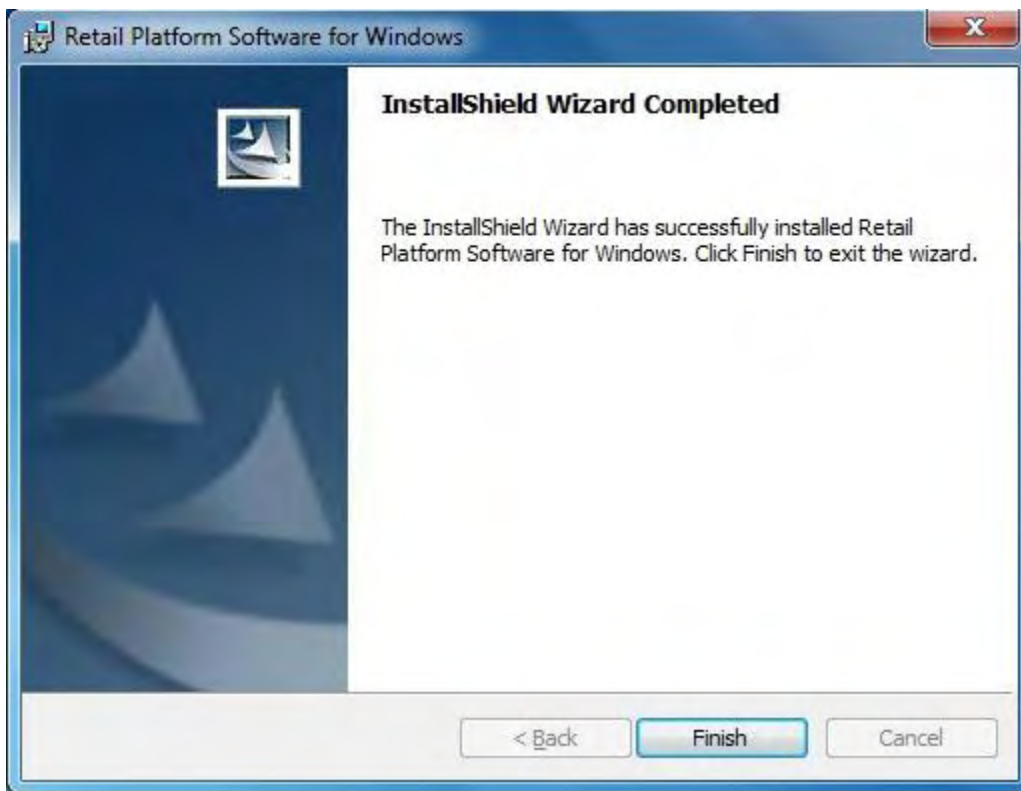


RSM is installed.

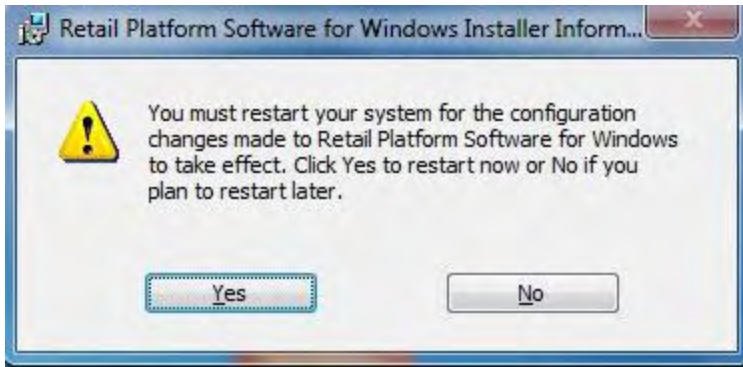


At this point attach the USB devices, i.e., POS printer, scanner. The Cash Drawer is to be plugged into the Cash Drawer port on the 7601/7606 motherboard regardless of which printer is used.

At the completed screen click Finish.



At the restart message box click Yes.



After reboot, logon as administrator.

Don't attempt to setup your devices at this point. That will be explained later in this document.

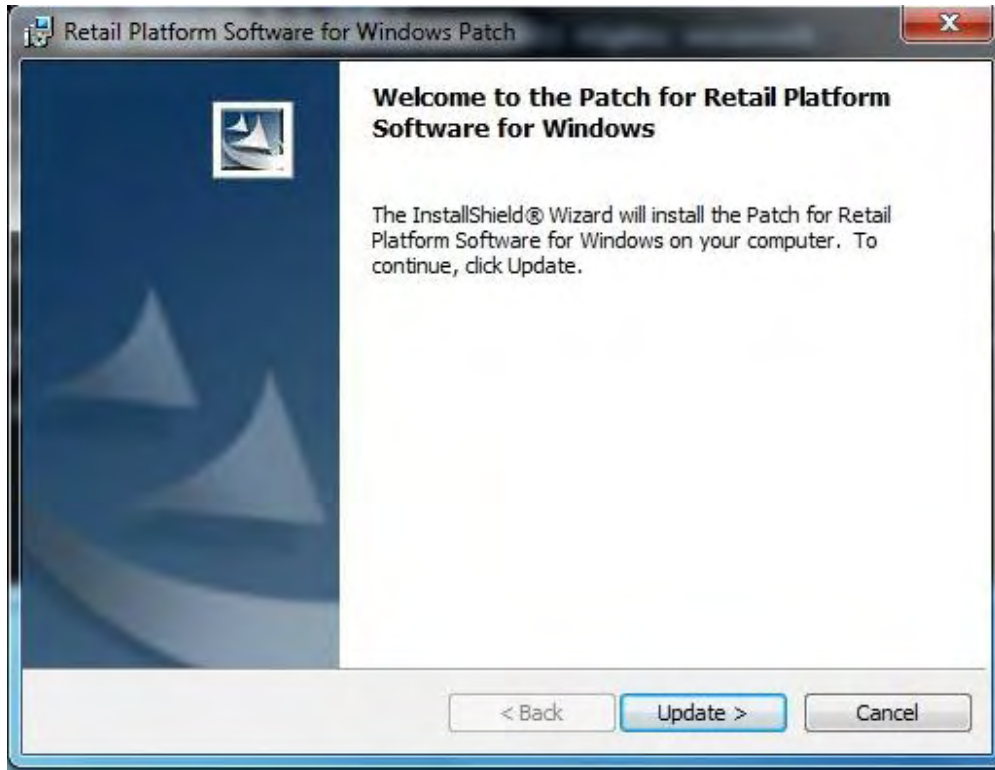
IMPORTANT for RELEASE 2 HARDWARE

When installing on Release 2 Hardware (ie.7601-3XXX/4XXX) you must also apply the RPSW4032.MSP patch after installing RPSW4031. Failure to do this will result in cash drawer not working. RPSW4032 is required to fully support the Riverside Motherboard in Release 2 Hardware.

Applying RPSW4032 patch to currently installed RPSW4031

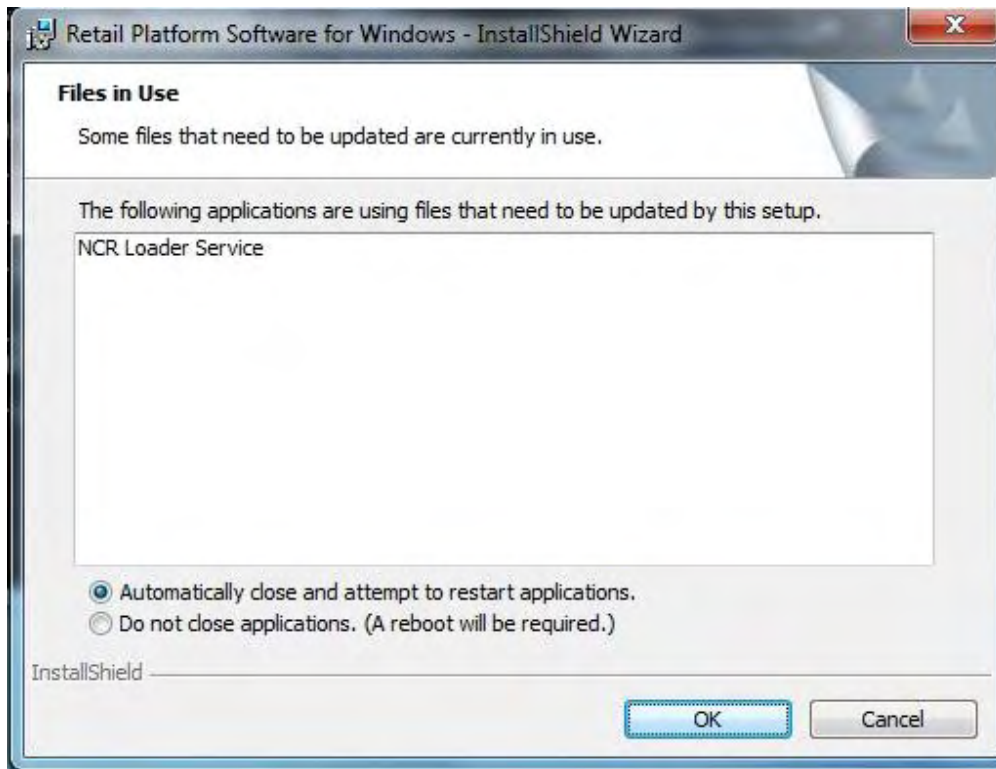
- 1) Copy the RPSW4032.MSP patch to your local drive and from a command line path to that location and run the following command:

```
msiexec /update "RPSW4032.msp" REINSTALL=ALL  
REINSTALLMODE=omus
```

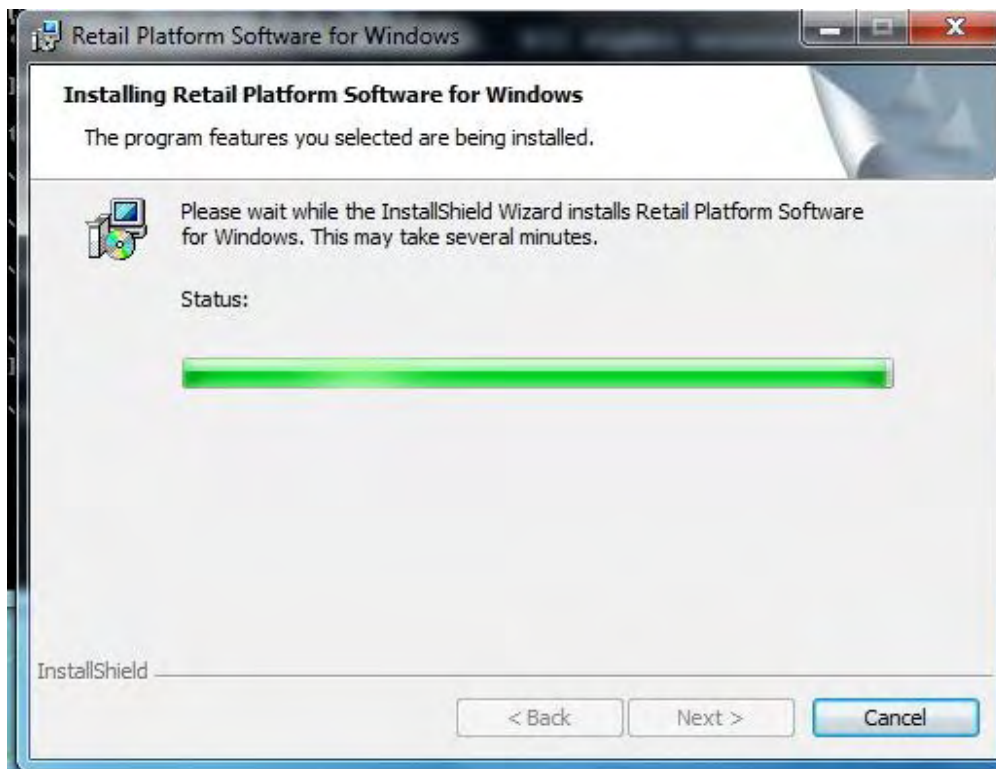


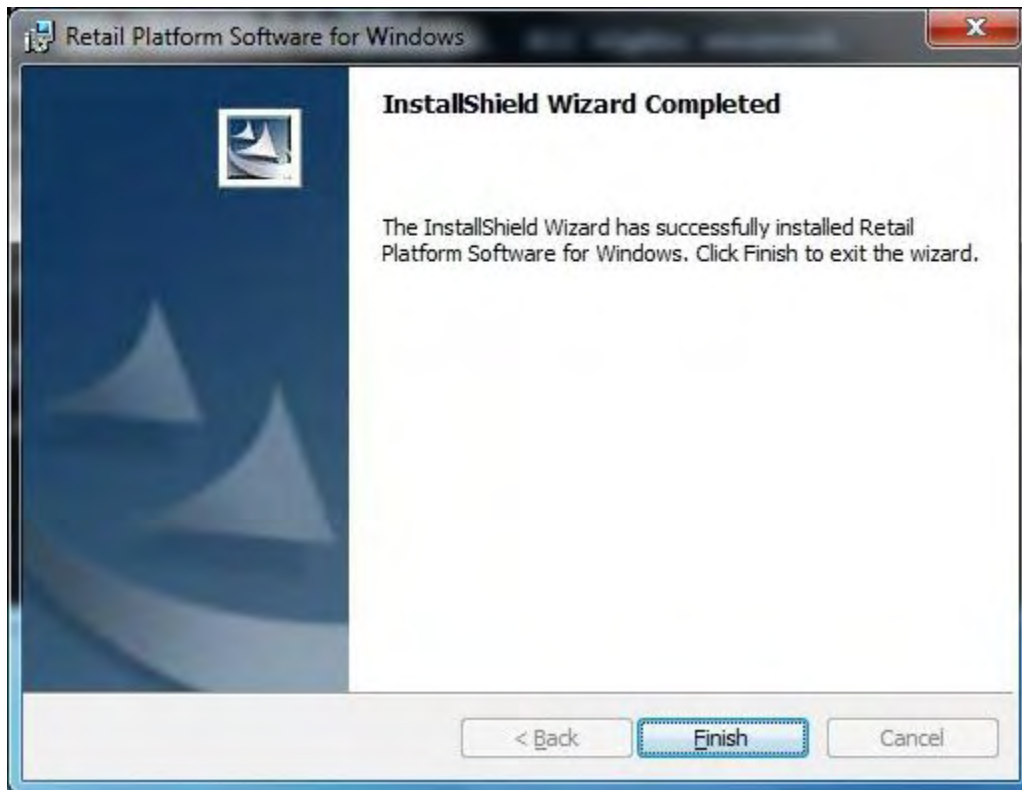
2) Click UPDATE >





3) Click OK





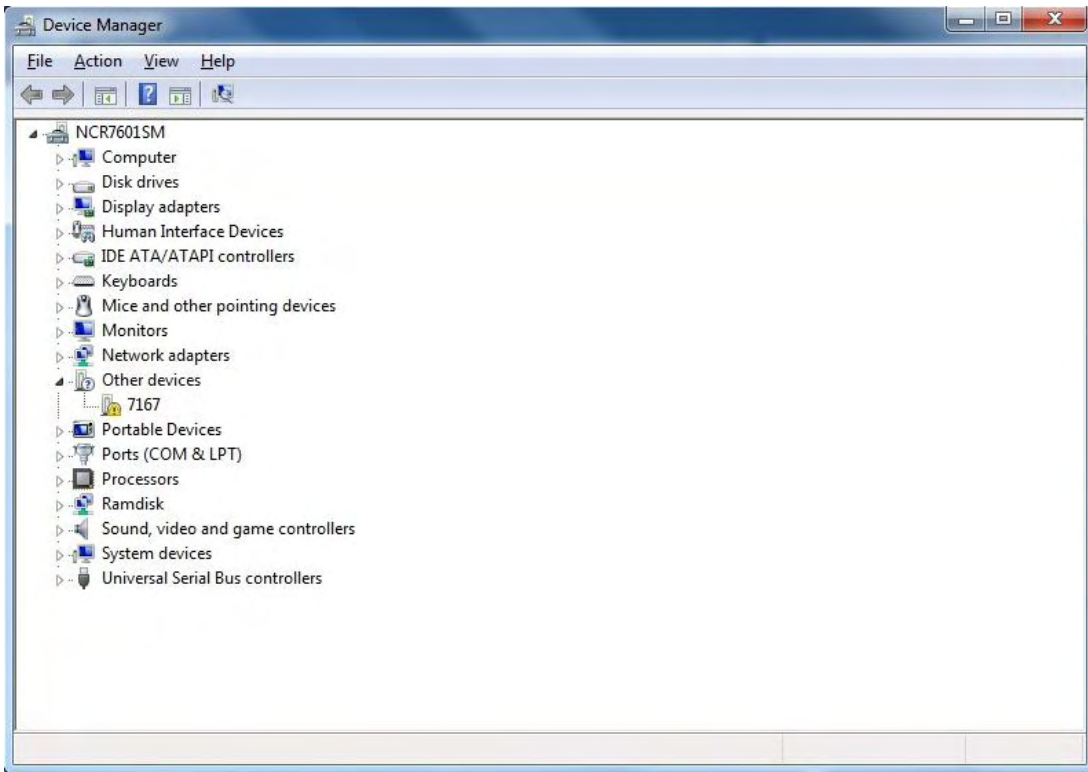
4) Click FINISH



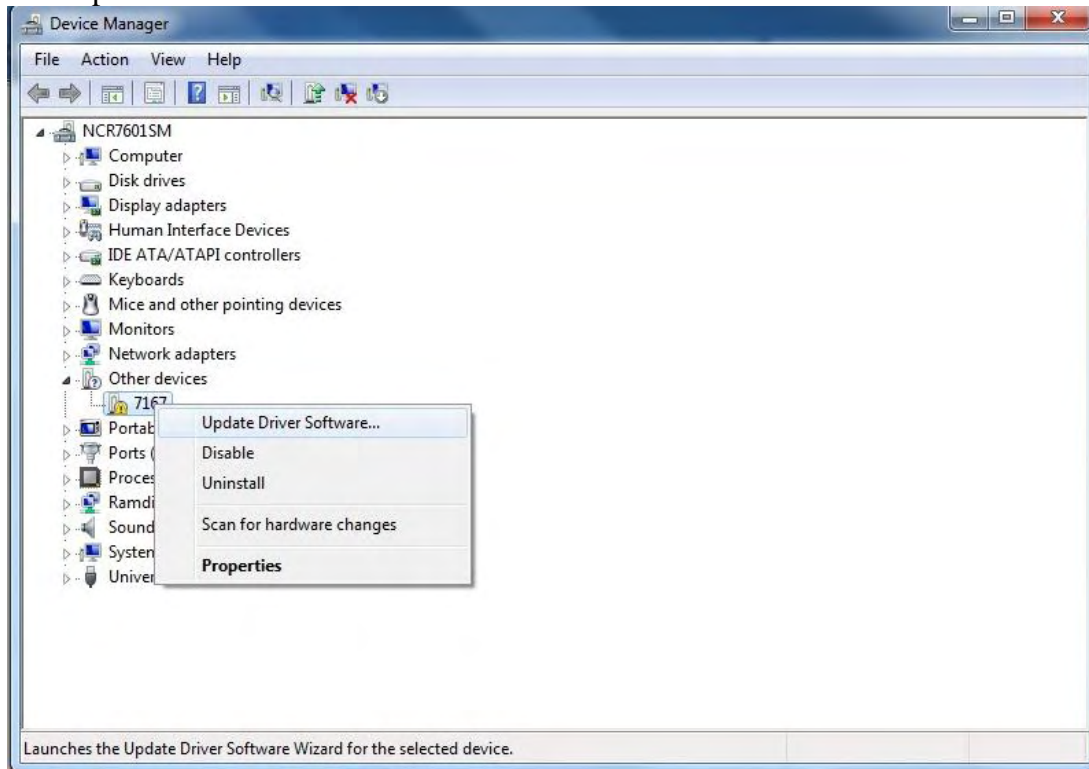
5) Click YES

Installing NCR printer drivers (IONetworks). If you are using an Epson TM-6000III/IV USB printer, install the Epson OPOS and set up the printer via the Epson utility.

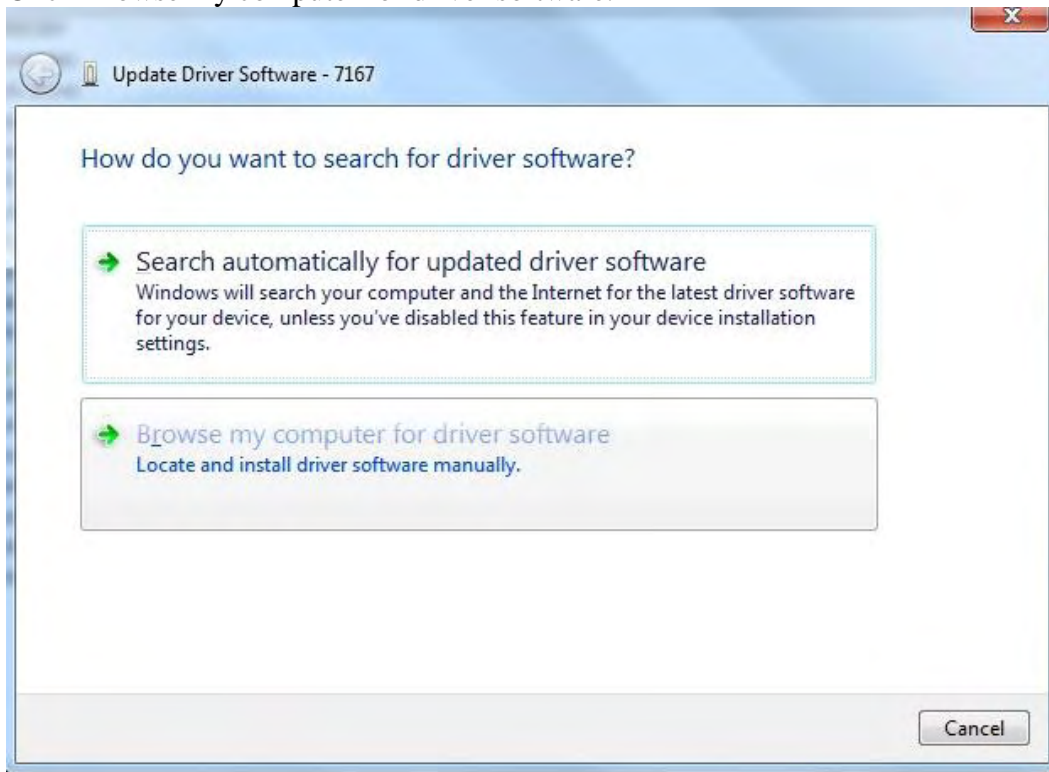
Click Start and go to the Control Panel. Click Device Manager.



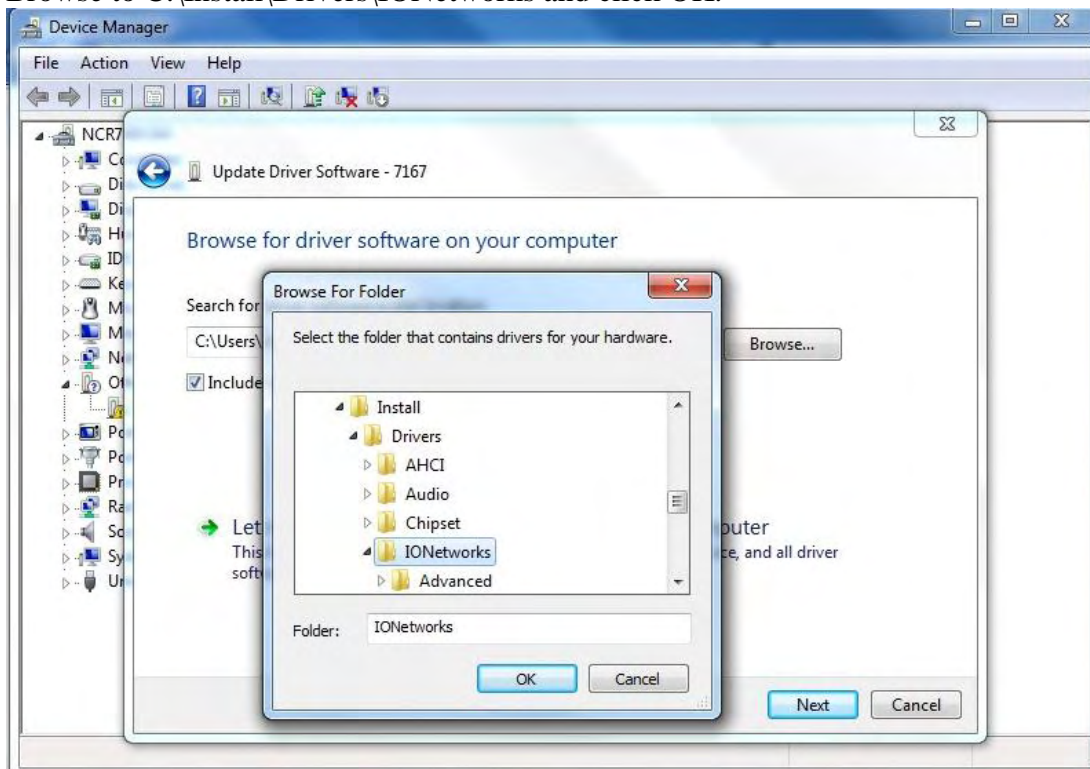
Under Other devices right click the device, i.e., 7167, with the yellow exclamation and click Update Driver Software.



Click Browse my computer for driver software.



Browse to C:\Install\Drivers\IONetworks and click OK.



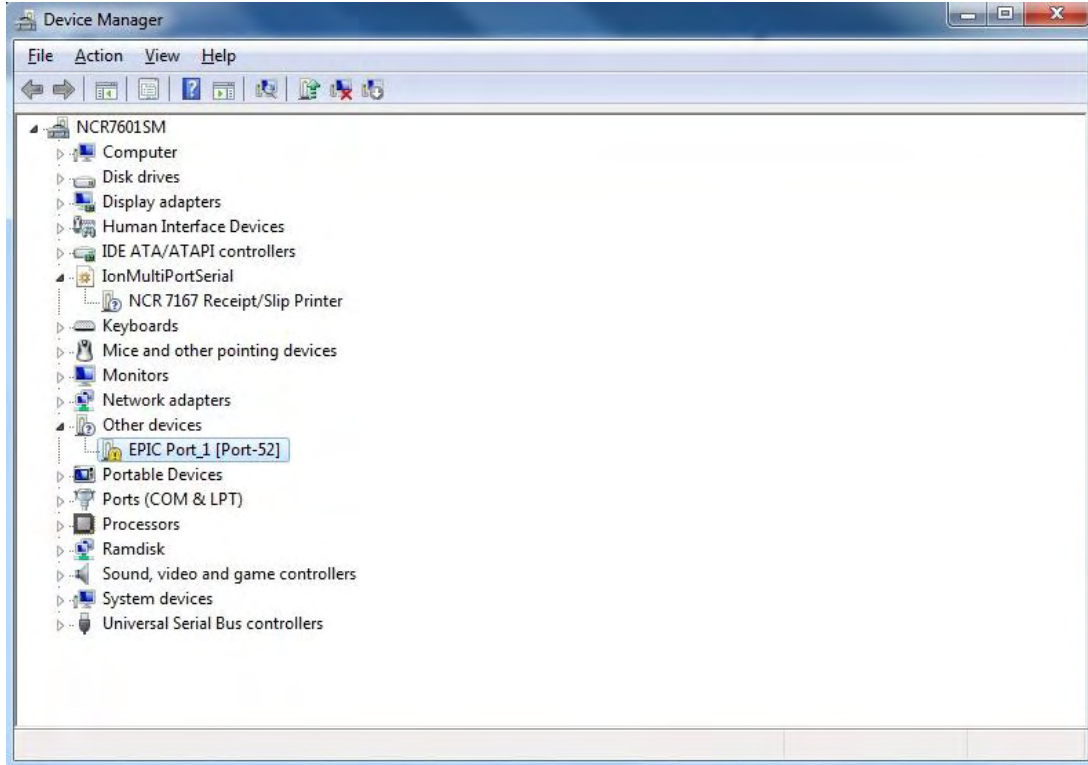
Click Next at the following screen.



At the following screen click Close.



Go back to Device Manager and repeat the same steps for the EPIC Port device.



Close Device Manager and Control Panel.

From the C:\Install\Drivers\RPSW folder on the POS and double click V8NCROPOS.reg This will install the Device Profiles. **ONLY DO THE FOLLOWING** if using an NCR 5954 Dynakey. Go to the C:\Install\Drivers\RPSW folder and double click the V8Dynakey.reg. This loads the keyboard map file. Now from the C:\Install\Drivers\RPSW folder, unzip the USBUtilities.zip to C:\Program Files\NCR\USB Keyboard. The USB Keyboard folder will need created. Once the files are in place, run the Install.bat file. Now place the 4 exe files that start with “Set” into the Startup folder.

NOTE: If you ever uninstall NCR RSM(OPOS) and reinstall it will be necessary to go to the C:\Install\Drivers\RPSW folder on the POS and double click V8NCROPOS.reg to reinstall the correct Device Profiles. The Device settings will also need redone to match the attached devices.

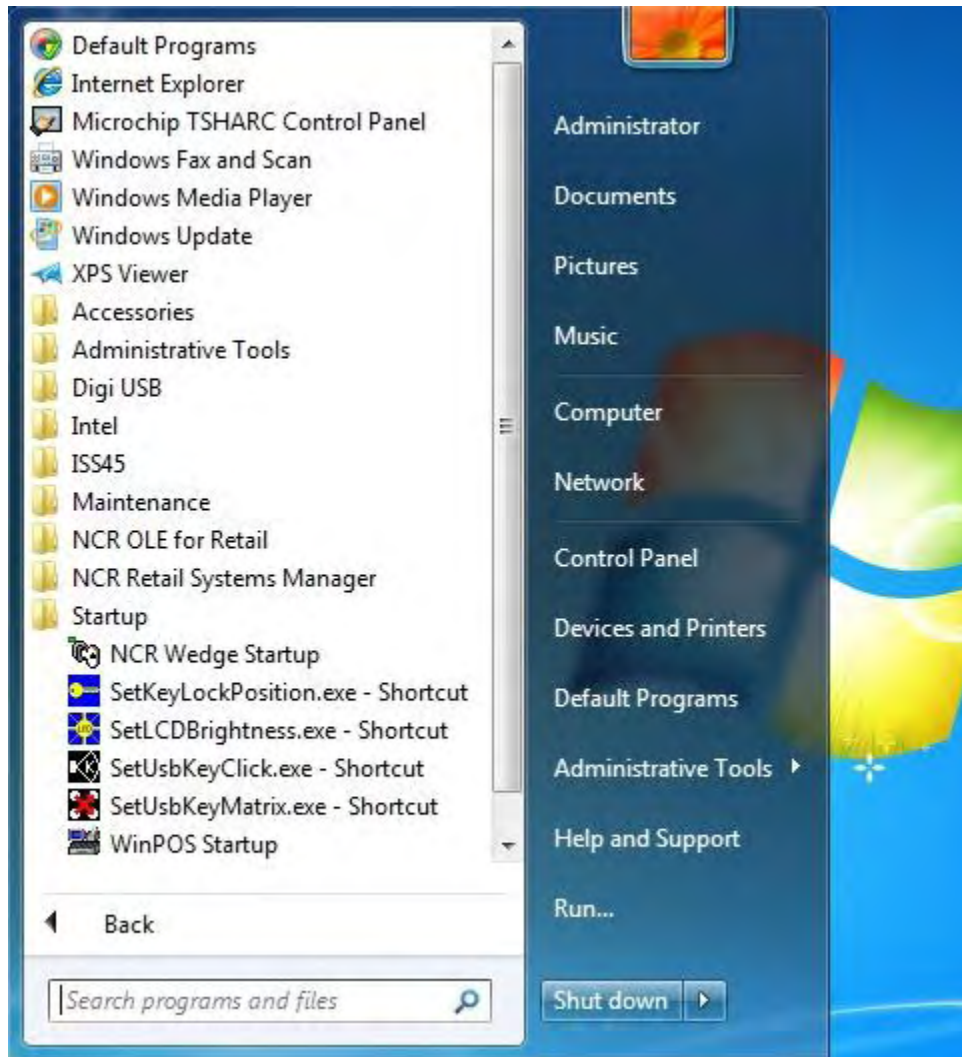
Open Explore window and navigate to the C:\Program Files\NCR\USB Keyboard folder. Highlight the 4 Set programs, right click and select Send to > Desktop create shortcut.

Go to the Desktop and highlight the 4 new shortcuts, right click and select cut.

Click Start, click All Programs, right click Startup and select Open from the drop down menu.

Paste the shortcuts into the right panel.

Verify that the shortcuts are in the Startup.



The following devices profiles were installed by the V8NCROPOS.REG file: NCRCashDrawer.1, NCRMICR.1, NCRPOSPrinter.1, NCRScale.7872, NCRScanner.7872 and NCR ToneIndicator.1. Other profiles were installed via the RSM install but only those listed above are currently supported by ISS45. Changing to other profiles will cause device failures in ISS45 V8.

Some of the above profiles should work as is, however, some profiles such as NCRPOSPrinter.1, NCRScale.7872 and NCRScanner.7872 may need changed depending on which printer or scanner/scale is attached to the POS. It is not the intention of this document to document how to use the RSM LE setup. Information on this can be found on the NCR website. That said, the device setup is fairly straight forward and the following screen provides an example on device setup.

Run RSM LE and configure your devices.



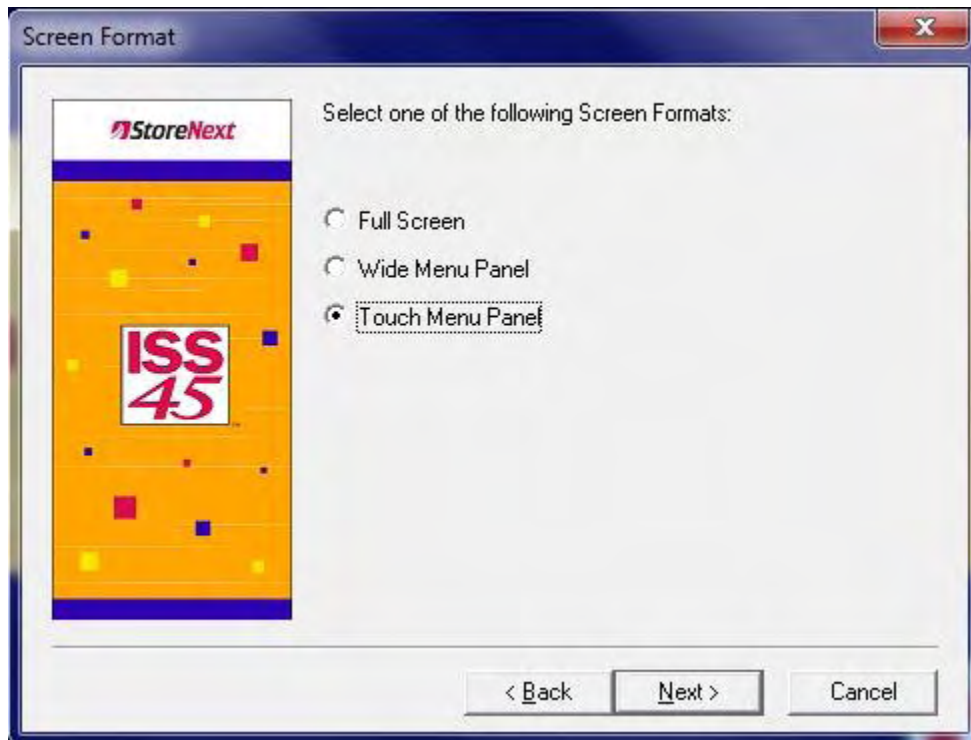
Once you have chosen the correct profile (see choices above), you normally will only have to choose the correct Model number of your device. Always select USB as your Port. For the 7168 printer, there are some additional settings to choose single or double sided printing. If you want double sided printing go to the Two Sided Thermal Mode

Option and select Double sided Automatic Split Receipt. (This requires special printer paper).

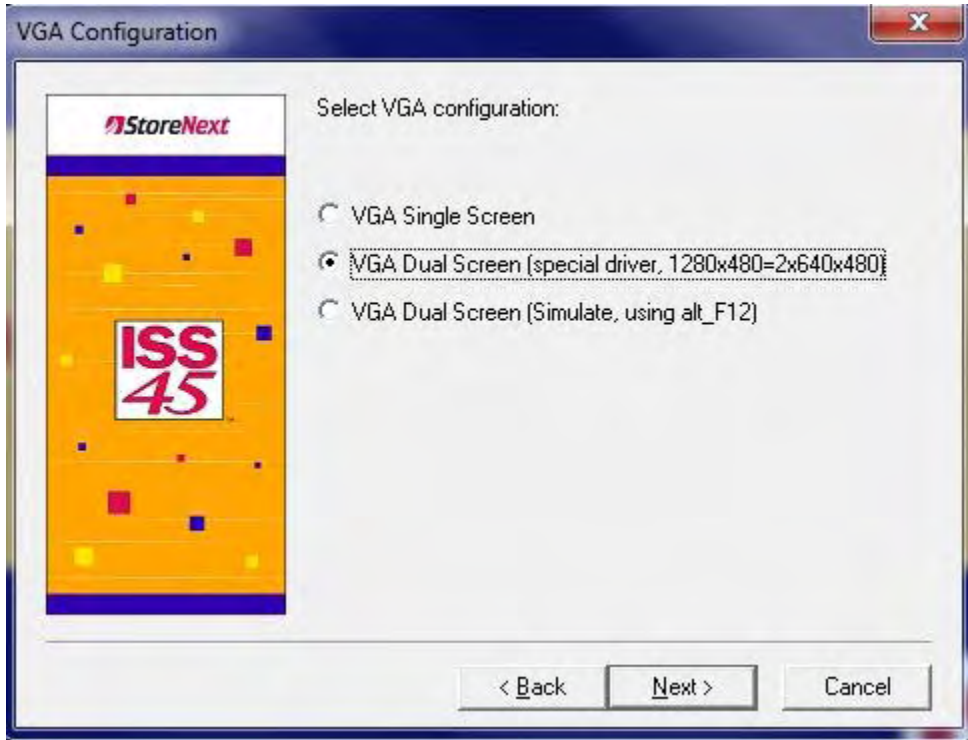
Now that the OS, network and device drivers are installed and configured, run the ISS45 V8 WinPOS install. See the Install guide on the website.

Use the following corresponding screens when doing the install. These are the only ones that are different.

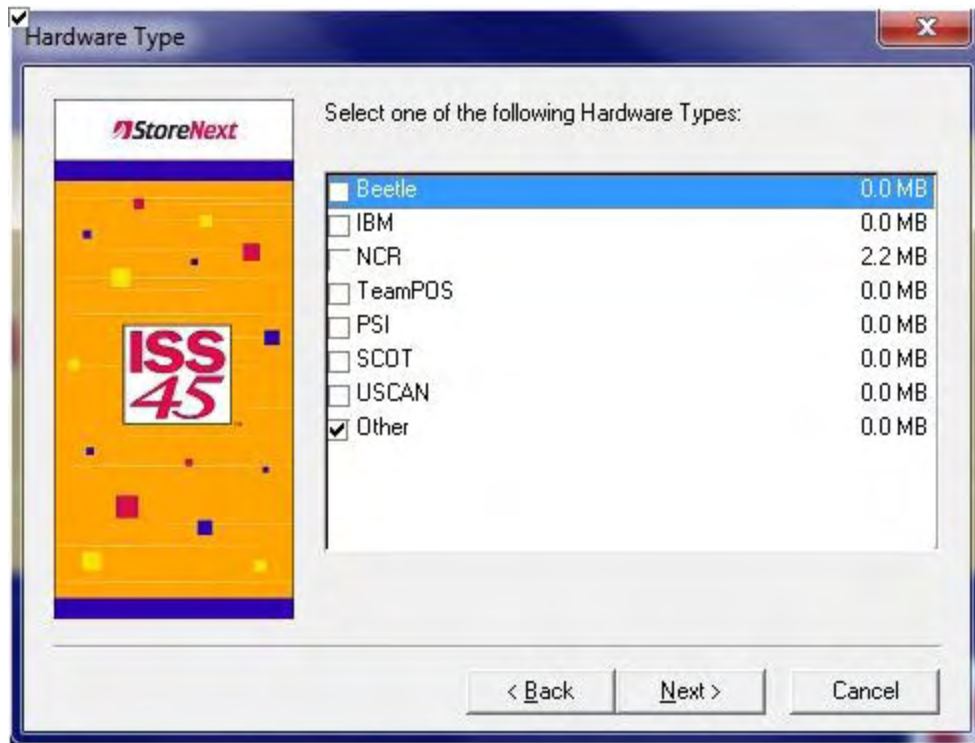
If using a Dynakey, select Wide Menu Panel else select Touch Menu Panel.



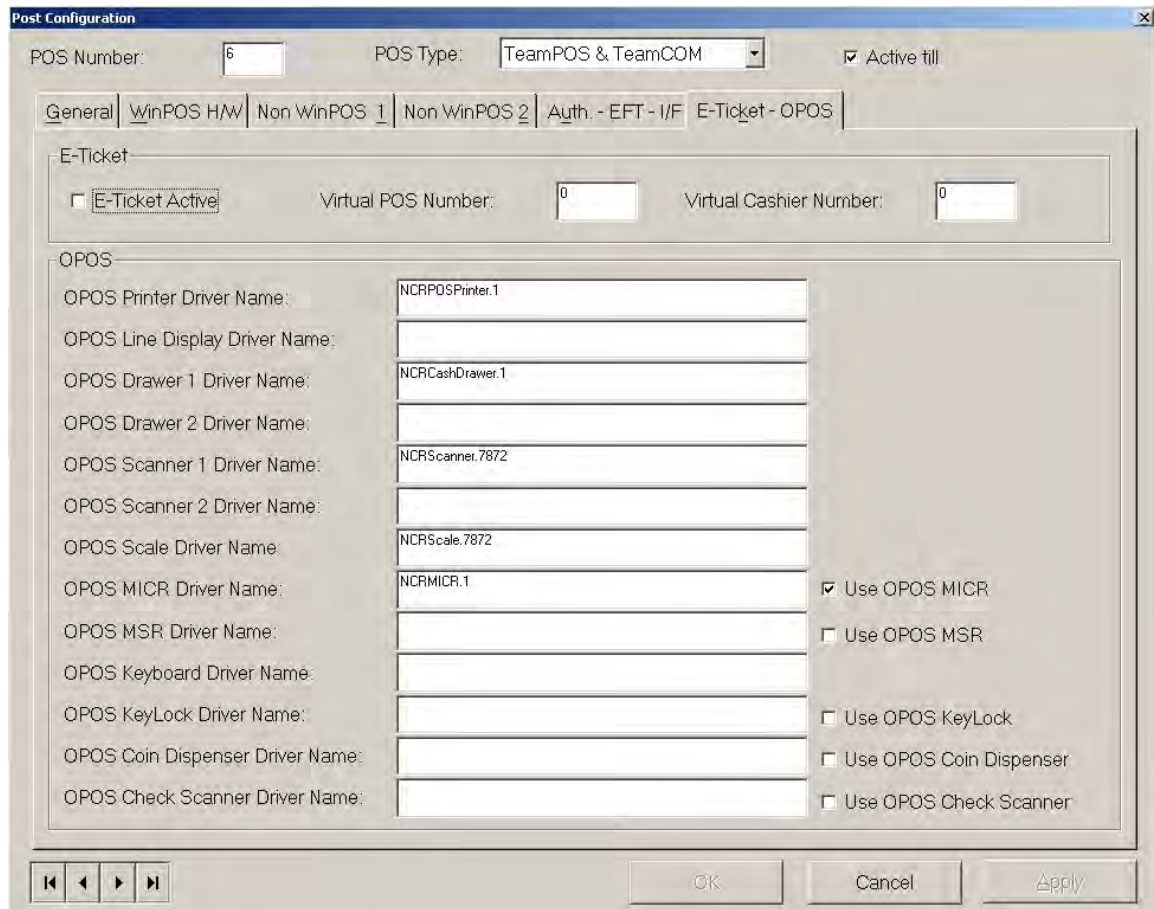
If using dual monitors select the following else select VGA Single Screen.



Under Hardware Type select Other.



Depending on the installed devices, setup the following OPOS devices in the FrontOffice POS Configuration. If using the Epson TM-H6000IIIU/IVU then install the Epson OPOS using the ADK268E.exe and set it to be TM-H6000IIIU for the Printer and the MICR:

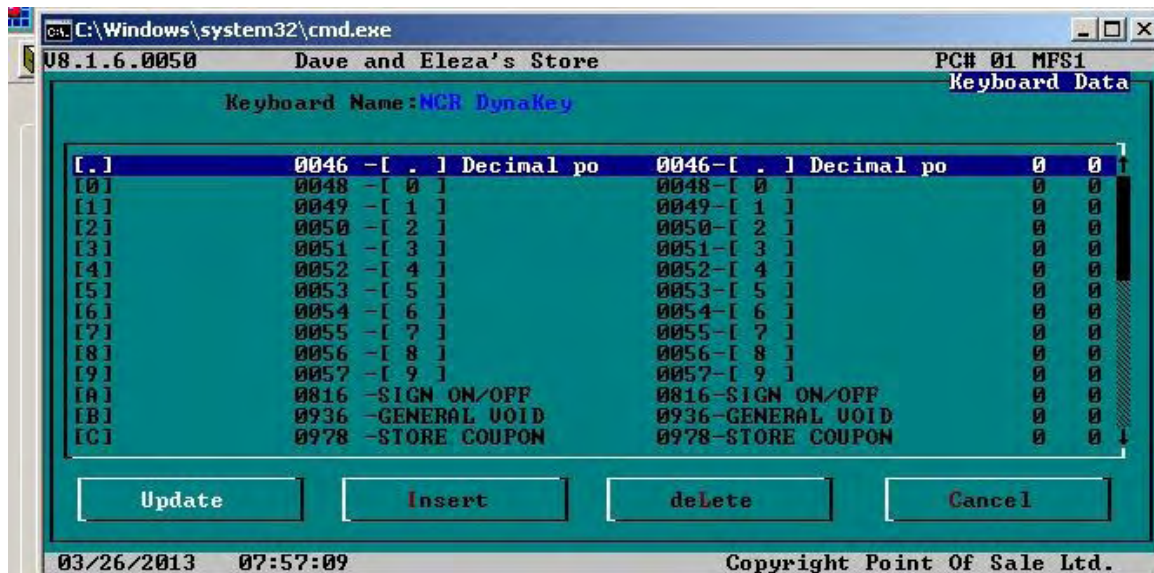


Additional setup information:

Printers – set or build appropriate templates for check writing.

Menusys.mac – a Sample_Dynakey_menusys.mac file is included in the website download for ISS45 V8. This is intended as an example of how some of the Dynakeys are setup and is not a full implementation. It is up to the Dealers to setup the menusys.mac file to meet the customer’s requirements.

Keyboard programming – It is also the Dealers responsibility to map the non-Dynakeys to the appropriate functions. Following is a sample of how the certification keyboard was programmed to match the installed Dynakey mapping.



The 8 Dynakeys are mapped as LShift- F1 thru LShift F8 and ARE NOT to be setup in the above keyboard programming.

FrontOffice POS Configuration settings for Dynakey registers:

Setup a keyboard type for the NCR Dynakey and assign that keyboard number in the POS Configuration General Tab. On the WinPOS H/W Tab, set the keyboard type to Dynakey non-OPOS. If using a touch Dynakey, set the Touch Screen type to None on the Non WinPOS 1 tab.

In the WinPOS.ini file check/set:

TouchPanelRows =8

TouchPanelColumns=1

MenuShiftKeys=Yes (Note: if you remap the F1 thru F8 keys to not use a shift this option will need set to No).

IMPORTANT: The Dynakey keyboards ships with the Keylock in the L position disabling the keyboard. Prior to using the Dynakey, put the Keylock in either the R or S position.

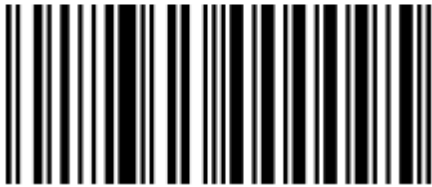


Following are the scan tags and sequences to program the 78xx scanners. Once the OPOS devices are setup and programmed the POS should be ready for use.

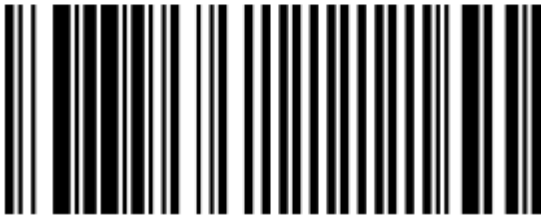
78XX Scanner programming tags:
To Program the 7874 / 7878 for ISS45 V8

(Start)

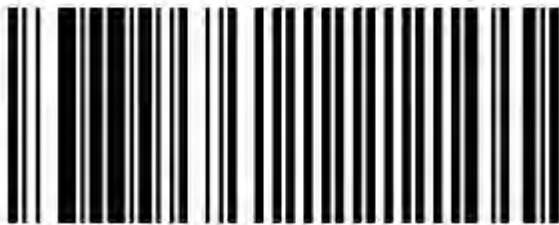
Reset



Default

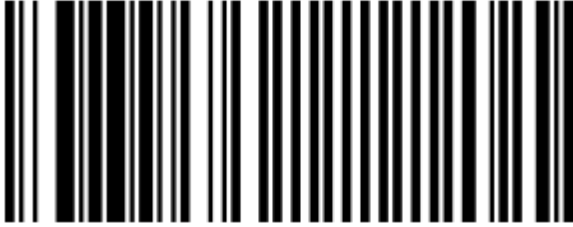


Programming Mode

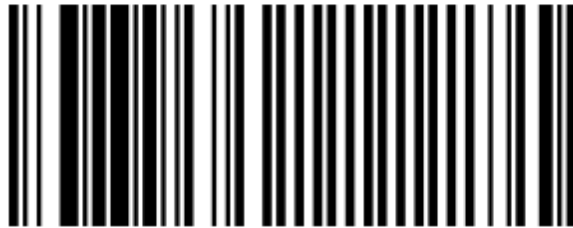


(Set to USB Communication Protocol)

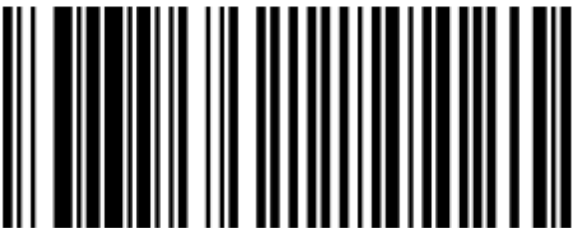
Hex 1



Hex 0

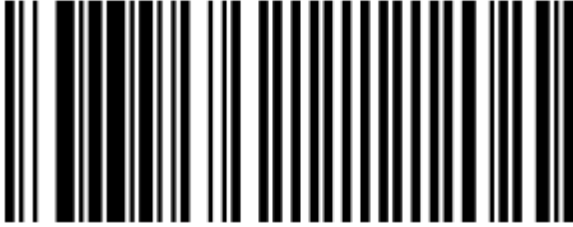


Hex D

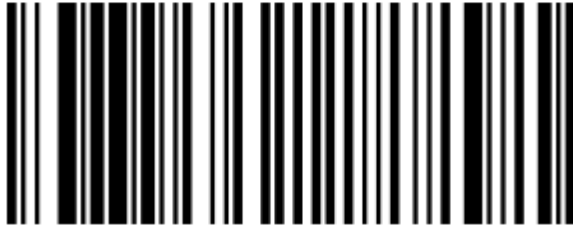


(Enable periodical codes)

Hex 1



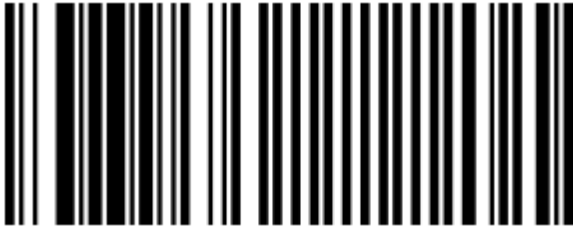
Hex 3



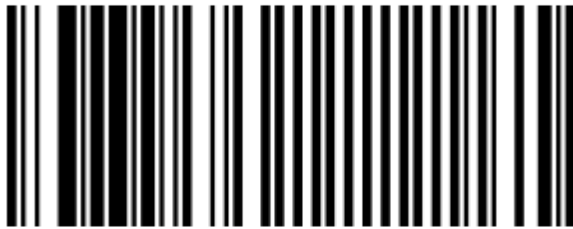
Hex E



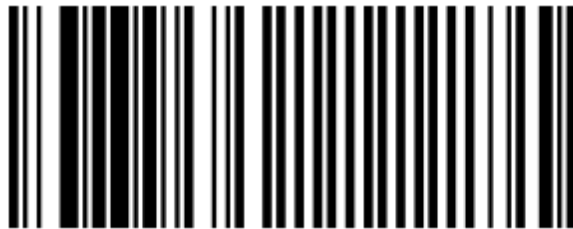
Hex 1



Hex 2

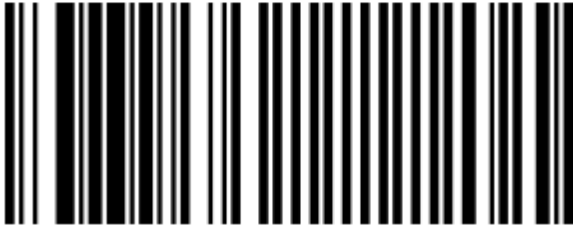


Hex 0

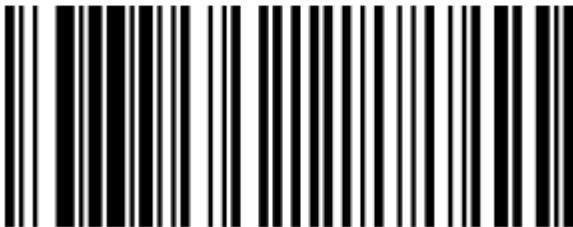


(Enable Code 128)

Hex 1



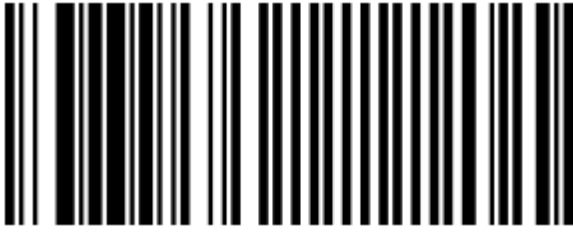
Hex 7



Hex A

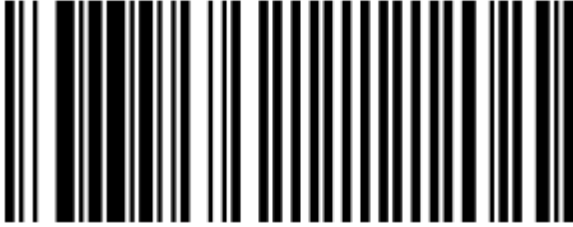


Hex 1

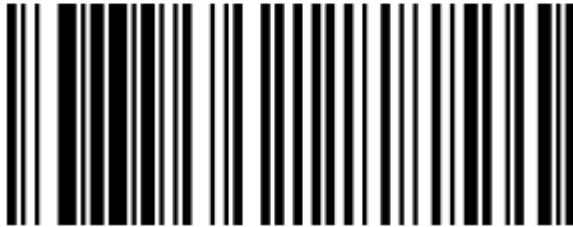


(Enable DataBar)

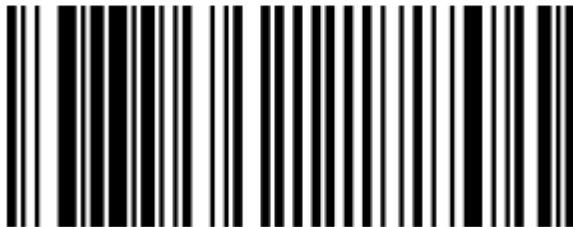
Hex 1



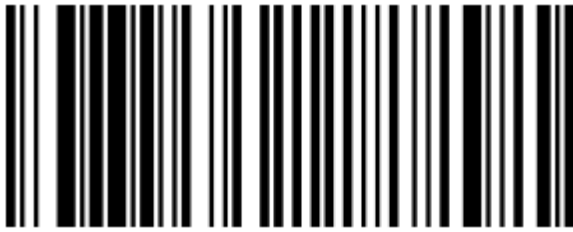
Hex 8



Hex A

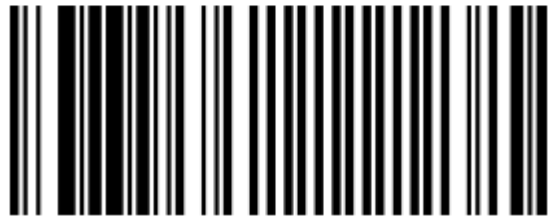


Hex 3



(Finish)

Save and Reset





© Retalix, Inc. 2014

Retalix, Inc. endeavors to ensure that the information in this document is correct and fairly stated but does not accept liability for any error or omission.

The development of Retalix products and services is continuous and published information may not be up to date. It is important to check the current position with Retalix. This document is not part of a contract or license, save insofar as may be expressly agreed.