



- *ISS45 Version 8 Installation Guide*
- *NCR Class 7837 Hand-Held Scanner*
- 
- 
- 



## ISS45 V8 Installation Guide – NCR Scanner/Scales

Date of Issue	Product ID Num.	Part Number	Brief Description
August 2015	45001/032	89000857	Initial Release – RealPOS79
November 2015	45001/032	89000868	Class 7837 Hand-Held

# NCR 7837 with ISS45

## Cables

7837 P-USB Cable	NCR-1432-C414-0030 (CBL-532-300-S00)  HSM 5V, USB Retail 12V Rev A
7837 USB Cable (used to attach to 7879)	NCR-1432-C413-0030 (CBL-500-300-S00)  HSM 5V, USB TYPE A Rev C

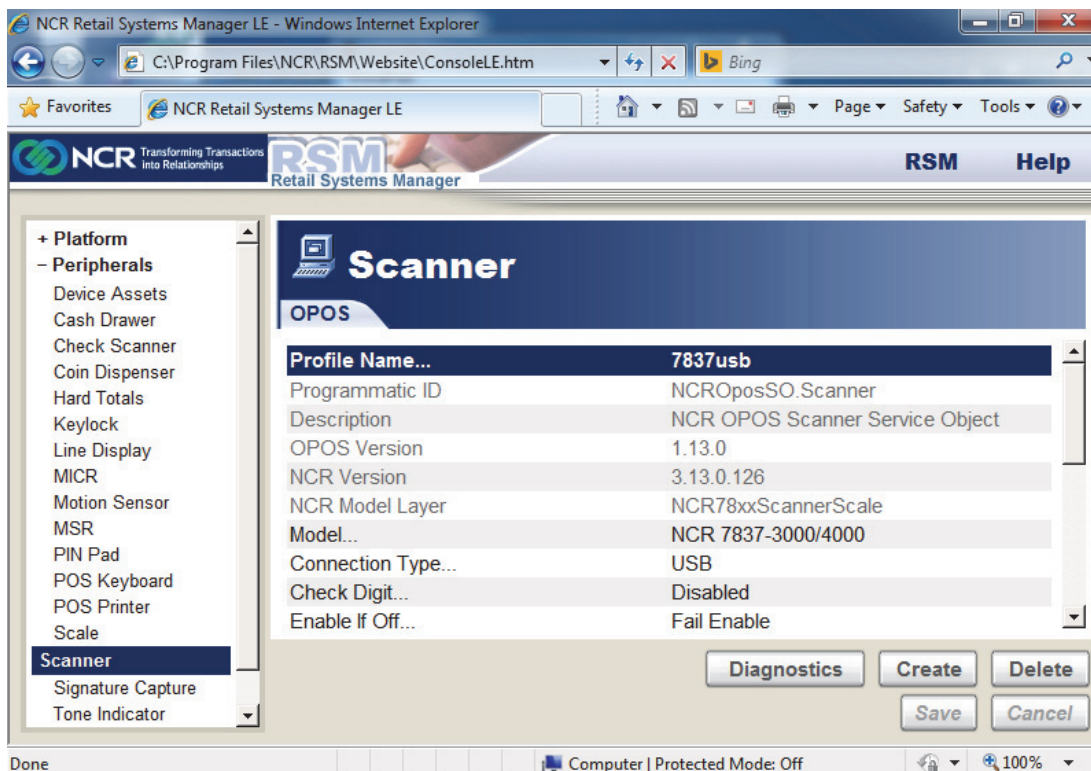
## Programming

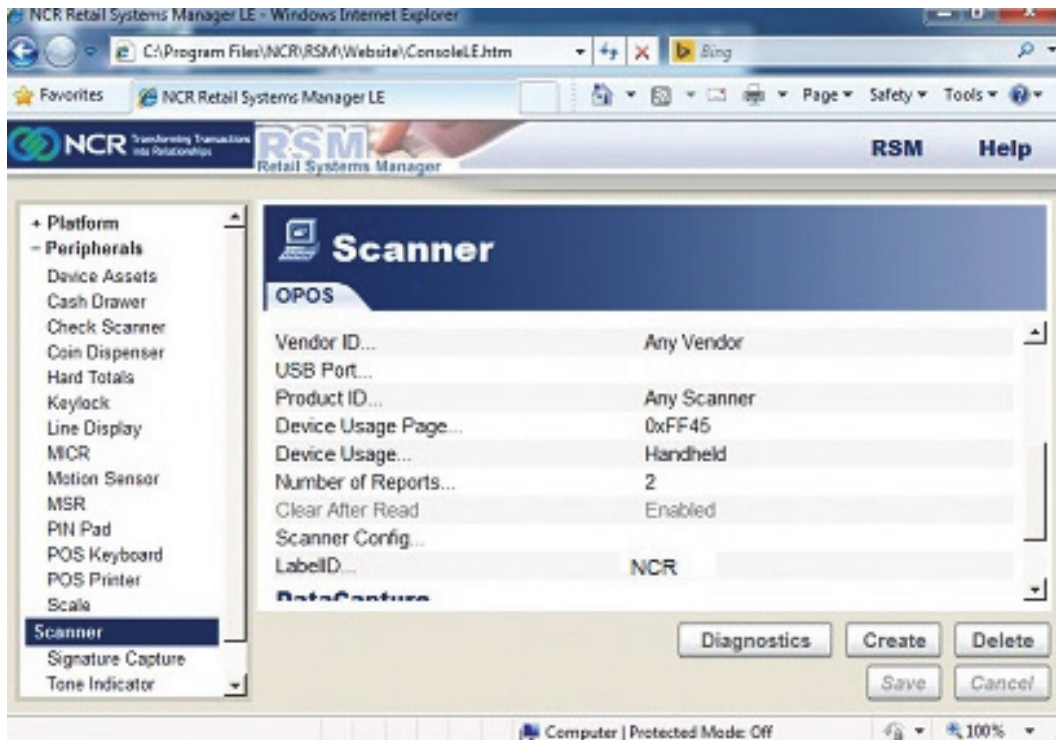
### Retail Systems Manager (RSM)

RPSW Version 4.0.6.0 was used during certification.

Minimum required version 4.0.3.6.

### Scanner Configuration when attaching direct to POS via P-USB





NOTE: Set LabelID=NCR for ISS45

### **Scanner Configuration when attaching 7837 USB to 7879 via P-USB**

Refer to NCR Realscan 7879 with ISS45 document for programming the 7879.

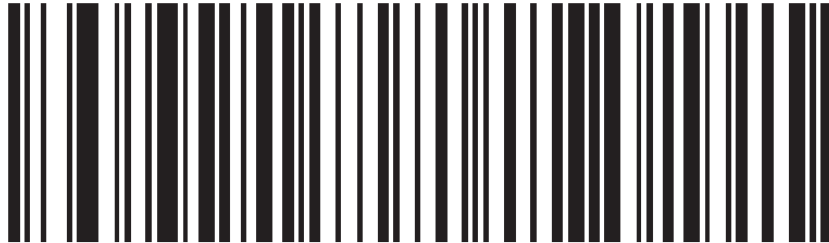
### **Scanner Configuration when attaching 7837 P-USB as Scanner2 and also using a 7879 via P-USB**

Refer to NCR Realscan 7879 with ISS45 document for programming the 7879. Setup Scanner2 in OPOS and setup the profile as outlined above under **Scanner Configuration when attaching direct to POS via P-USB.**

**Note: It is recommended to attach the 7837 USB to 7879 via P-USB rather than connecting it directly to the POS as Scanner2.**

## 7837-4XXX Programming for USB

FACTORY DEFAULT



**Place the Scanner back in the cradle for 15 Seconds**



PAPS.PH.



UPEEXP1.

### **Very Important:**

Power cycle the POS after you finish scanning above tags. Although it will appear scanner is working a power cycle is required to complete the process. If you fail to do this you will experience the scanner intermittently producing an error tone after a good tone when scanning items.



© NCR Corporation, 2015

NCR endeavors to ensure that the information in this document is correct and fairly stated but does not accept liability for any error or omission.

The development of NCR products and services is continuous and published information may not be up to date. It is important to check the current position with NCR. This document is not part of a contract or license, save insofar as may be expressly agreed.

---

**NCR Corporation**  
2651 Satellite Blvd.  
Duluth, GA 30096

**P/N 89000868**  
**PIN 45001/032**