



- *ISS45 Version 8 Installation Guide*
- *NCR 7603 POS Terminal*
- *(RealPOS XR6)*
- 
- 



## ISS45 V8 Installation Guide – NCR POS Terminals

Date of Issue	Product ID	Part Number	Brief Description
April 2013	45001/032	89000760	RealPOS 60 / RealPOS 82XRT
December 2013	45001/032	89000795	RealPOS 60 / RealPOS 82XRT v2
February 2014	45001/032	89000800	RealPOS 60 / RealPOS 82XRT v3
February 2014	45001/032	89000802	RealPOS 40 Release 2
January 2015	45001/032	89000820	RealPOS XR7
April 2015	45001/032	89000828	RealPOS 25 Release 2
May 2015	45001/032	89000831	RealPOS 50 Release 2
August 2015	45001/032	89000859	RealPOS XR6

**©Copyright NCR Corporation 1995-2015  
All rights reserved**

This publication is protected by federal copyright law. This document and its contents are the proprietary, confidential information and property of NCR Corporation ("NCR"). Unauthorized disclosure, reproduction, distribution or use of this document and/or its contents in any form is strictly prohibited. No part of this publication may be reproduced or transmitted into any human or computer language in any form or by any means, stored in a retrieval system, transmitted, redistributed, translated or disclosed to third parties, or de-compiled in any way including, but not limited to, photocopy, photograph, electronic, mechanical, magnetic or manual without the express written permission of NCR or its licensors, if any. This document, notwithstanding the above, may be distributed in electronic or printed form by NCR to personnel who are employed by either (a) a licensee and end user of the subject system of this document or (b) personnel from an authorized NCR Channel Partner or Solution Provider of the subject system of this document. All copies of this document so distributed and/or so authorized, shall contain a full copy of this copyright notice.

NCR has prepared this document as a guide to the proper installation, operation, customization and/or maintenance of NCR products. The drawings and specifications contained herein are the property of NCR and/or its licensors.

NCR endeavors to ensure that the information in this document is correct and fairly stated but does not accept liability for any error or omission. NCR makes no representation or warranties with respect to the contents hereof, and specifically disclaims any implied warranties of merchantability or fitness for a particular purpose or non-infringement. No commitments by NCR or its suppliers are made by or from this documentation which is provided for information only.

Development of NCR products and documentation is continuous: NCR reserves the right to revise this publication and to make changes at any time to the contents hereof or to the products herein described or discussed without notice and without any obligation for NCR to notify any person or organization of such revision or changes. Information published in this document will likely be superseded, and it is recommended that users regularly check for updates and newer versions.

The trademarks NCR, Retailix, StoreNext, ISS45, ScanMaster, R10, ACS, PocketOffice, RPO, RBO, ABO, Connected Payments, ServerEPS, Connected Services, Connected Loyalty, WinEPS and all other NCR product names are registered trademarks or trademarks of NCR; all other trademarks or registered trademarks are the property of their respective owners. Third-party products, services, or company names referenced in this document may be trademarked or copyrighted by their respective owners, and are for identification purposes only. Copyrights, trademarks and license agreements shall be governed and construed in accordance with the laws of the State of New York and the Federal Arbitration Act, and shall benefit NCR, its successors, and assigns.

Address comments and corrections regarding this document to:

Attn: Software Program Director  
NCR  
797 Commonwealth Drive  
Warrendale, PA 15086

## **Configure Bios and POSReady 7 on NCR XR6 (7603) POS for ISS45 V8**

Check the BIOS settings to ensure that the Network : IBA GE Slot 00C8 v15XX is Disabled and under Boot Device Priority that the 1<sup>st</sup> device is set to the HDD. If the Network boot is enabled, the boot time of the POS will be considerably longer.

The NCR XR6 (7603) comes preloaded with POSReady 7 SP1. For the out-of-box setup, only attach the keyboard, mouse and monitor. After initial power up follow directions on the screen to setup.

Accept the license terms.

Windows will now finalize your settings. Select Restart now to reboot.

The POS will auto login as user NCR and no password.

Review your time and date settings screen. Select your time zone. Set the date and time.

Windows Settings:

Click Start, and type "**secpol.msc**" in the search area and hit Enter. In the left list, select "**Local Policies**", then open "**Security Options**".

In the right pane:

Set "**Accounts: Administrator account status**" to **Enabled**.

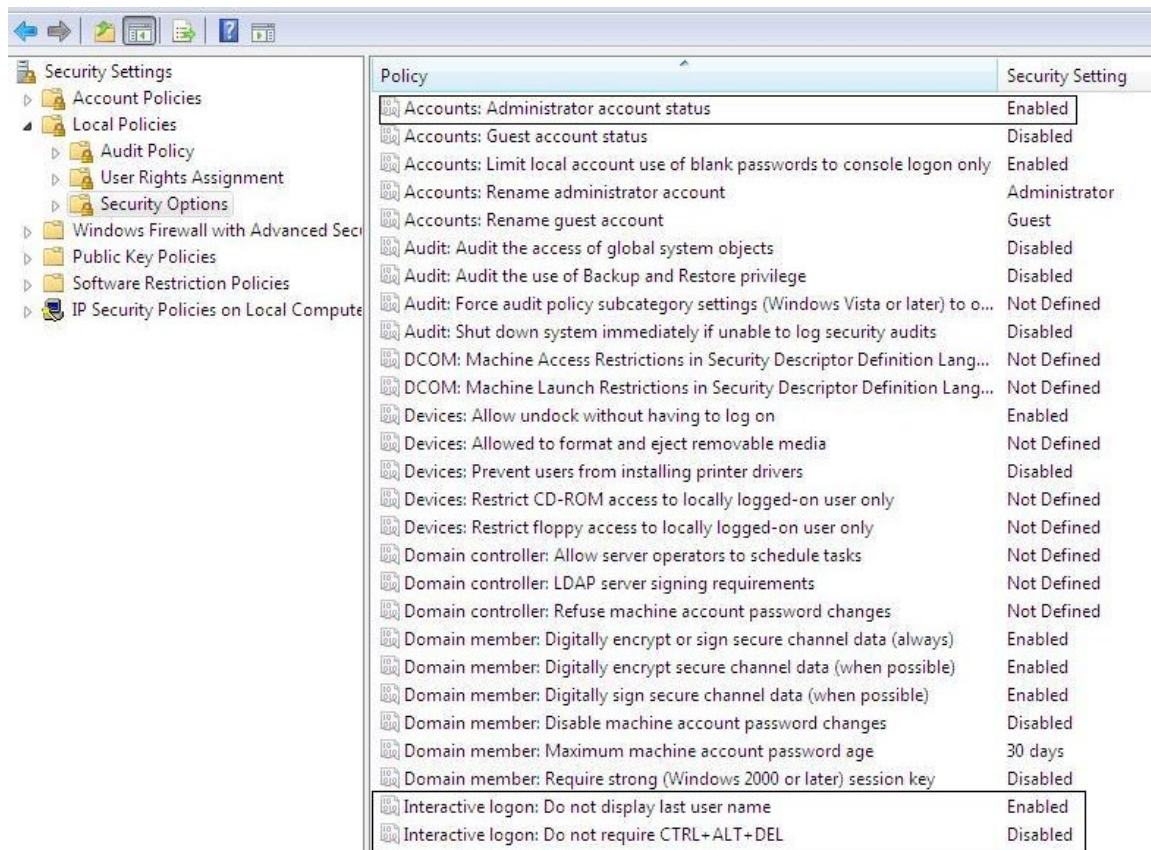
Set "**Interactive logon: Do not display last user name**" to **Enabled**.

Set "**Interactive logon: Do not require CTRL + ALT + DEL**" to **Disabled**.

Set "**User Account Control: Admin Approval Mode for the Built-in Administrator account**" to **Disabled**.

Set "**User Account Control: Behavior of the elevation prompt for administrators in Admin Approval Mode** to **Elevate without Prompting**.

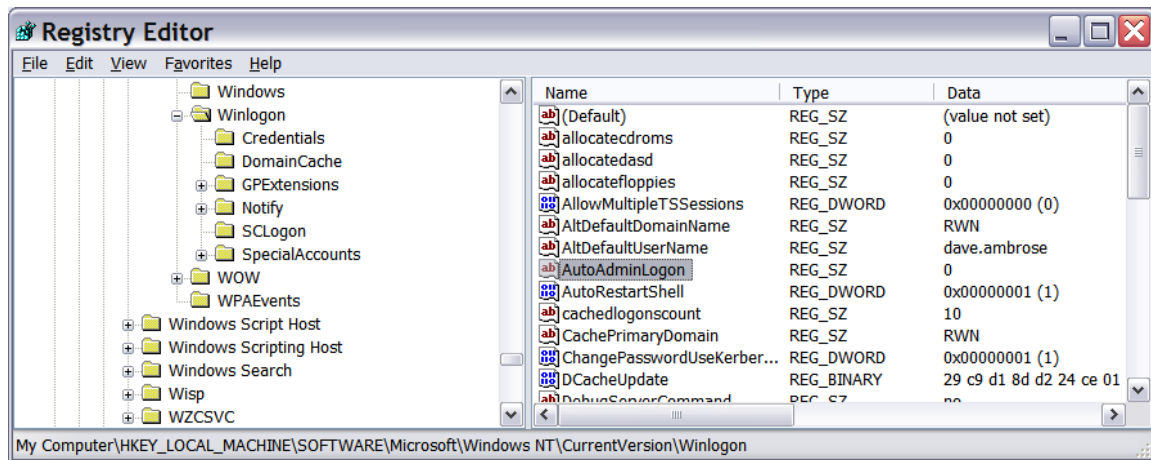
## Installing ISS45 on the NCR XR6 (7603) using POSReady 7



Next double click the User Rights Assignment under Security Settings and double click “**Log on as a service**”, click Add User or Group, type in “Administrator” and click the Check Names button. Click Ok, click Apply (click Ok if an error occurs), click Ok and close secpol.msc.

## Installing ISS45 on the NCR XR6 (7603) using POSReady 7

Disable auto login. Run Regedit and go to HKEY\_LOCAL\_MACHINE\Software\Microsoft\Windows NT\CurrentVersion\Winlogon and set the AutoAdminLogon value to 0.



Log off and log back in as the Administrator (No password required yet).

Setting the Administrator's password.

Click Start and open Control Panel. Change View by: to small icons

Select "User Accounts".

Click "Create a password for your account".

Make the password the same as the administrator password on the Server.

Enter hint if so desired. Click Create password. **Do not forget this password or you may have to reinstall Windows 7!**

You should be back at the "Make changes to your user account" screen.

Close the Control Panel.

Reboot and log back in as the Administrator with the new password.

Click Start and open Control Panel. Change View by: to small icons if not already set.

Under Windows Update.

Click Change Settings.

Click the drop down arrow and select Never check for updates.

Click OK.

Return to the main Control Panel.

Click Power Options.

Click the down arrow by the Show additional plans.

Click High Performance.

Optional – Default settings will cause the monitor to turn off after 15 minutes of inactivity.

You can change this by going to Change Plan Setting and adjust display options.

Return to the main Control Panel.

## Installing ISS45 on the NCR XR6 (7603) using POSReady 7

Click Network and Sharing Center.

Click Change adaptor settings.

Right click the Local Area connection and click Properties.

Click the Configure button, verify/set that all options under Power Management are unchecked.

Click OK.

Right click the Local Area connection and click Properties.

Highlight Internet Protocol Version 4 and click Properties. Fill in the IP address information. Click OK. Click Close.

Return to the Network and Sharing Center.

Click Change advanced sharing settings. Ensure that the option Turn on network discovery and Turn on file and printer sharing are turned on. Scroll down and turn off Password protected sharing. Do this for both the Home or Work and Public sections.

Click Save changes.

Return to the Control Panel.

Click Date and Time.

Uncheck Notify me when the clock changes

Return to the Control Panel.

Click Action Center.

Change Action Center settings.

Uncheck any items, i.e. Windows Update, Firewall, etc. that you don't want Windows to pop notification messages. (Recommended to uncheck all)

Click OK.

Return to Control Panel.

Click Windows Firewall.

Click Turn Windows Firewall on or off.

Turn off both private and public firewall options.

Click Ok.

Return to Control Panel.

Click Display.

Select Adjust Resolution and set to 800 X 600 on all monitors.

Click Apply.

Click to keep changes.

Click through warnings.

Click OK

Close the Control Panel.

If the computer name or workgroup name needs changed, click System.

Click Advanced system settings.

## Installing ISS45 on the NCR XR6 (7603) using POSReady 7

Under the Computer name tab, domain and workgroup settings, click Change setting. If prompted for a reboot, accept and let the system reboot to update its settings.

Note: For security reasons, you may want to delete the NCR users.

POSReady 7 should now be ready for software installation.

The XR6 uses the Touch Base Drivers\_05\_01\_1134 located in c:\Install\Drivers\Touch. Double click to install touch driver. Calibrate both Screens (if using dual screens) by clicking on Calibrate as shown below and follow directions on the screen and also set as indicated on screens below.

Click Install.

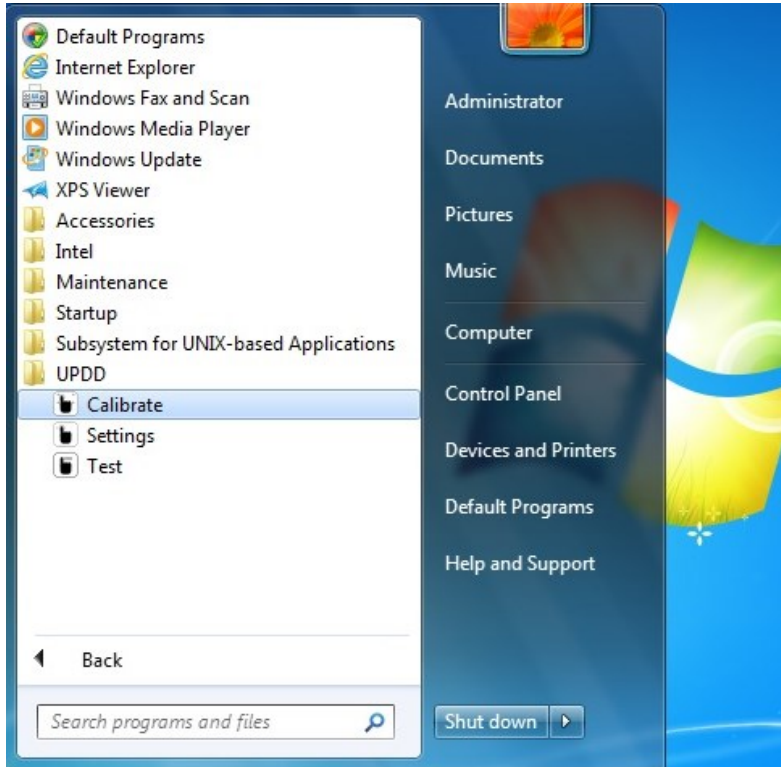


## Installing ISS45 on the NCR XR6 (7603) using POSReady 7

Click Close.



Click Start → All Programs → UPDD. To Calibrate, click on Calibrate.



## Installing ISS45 on the NCR XR6 (7603) using POSReady 7

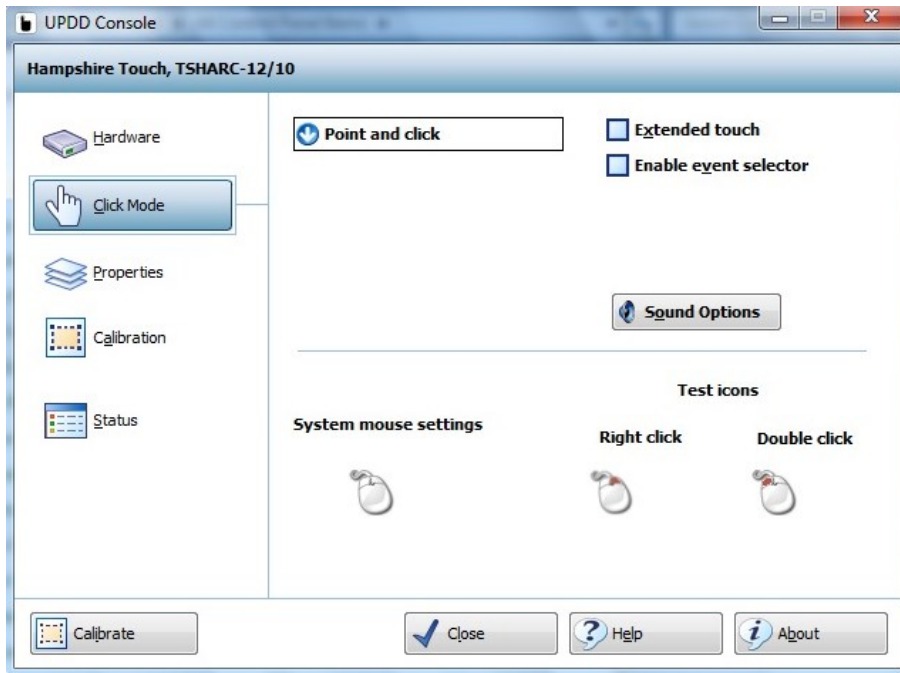
Follow the screen instructions. BE SURE NOT TO TOUCH THE SCREEN when instructed not to.



### Hampshire Touch, TSHARC-12/10 on Whole Desktop

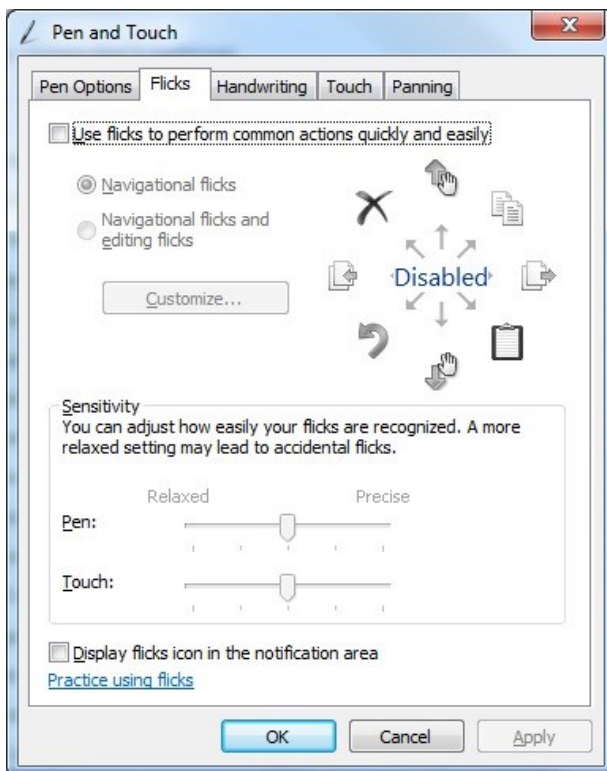
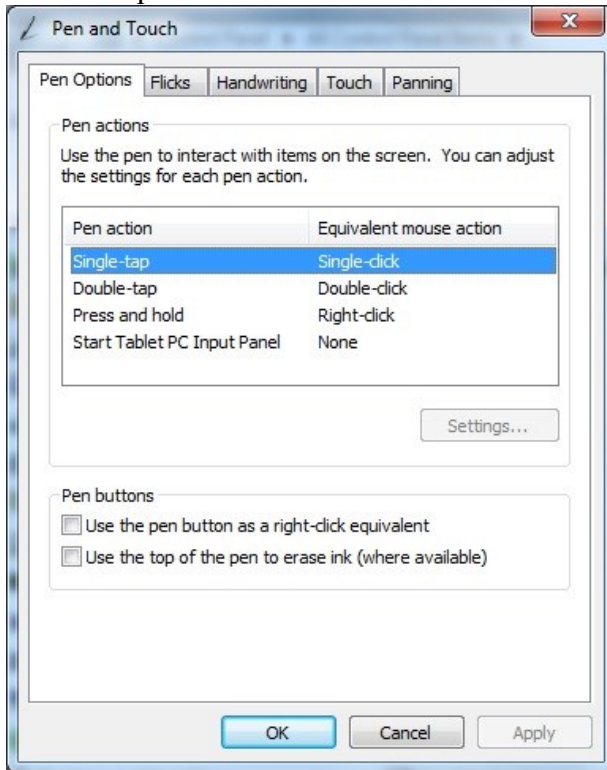
Please touch the center of each cross as it appears  
Hold the touch until the circle changes to dark blue

Under Control Panel-> Pointer Devices



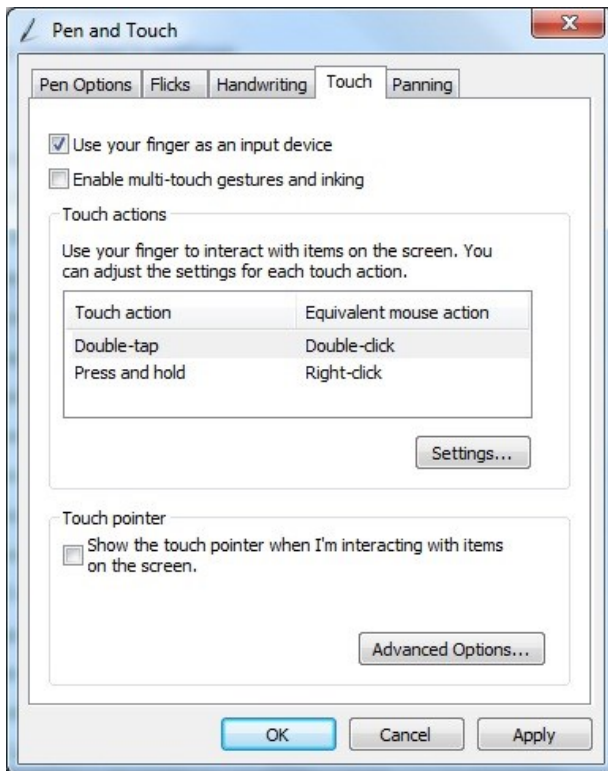
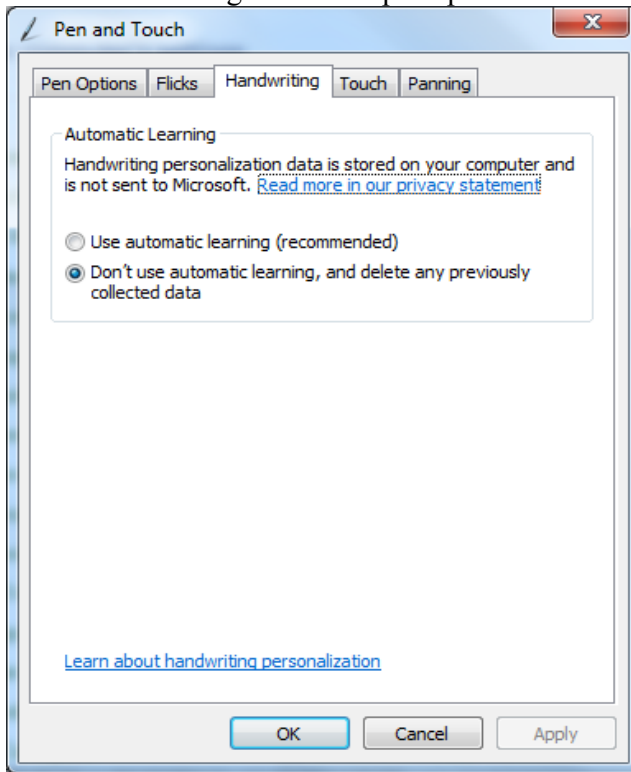
**Under Control Panel-> Pen & Touch.**

Turn off options as indicated below.

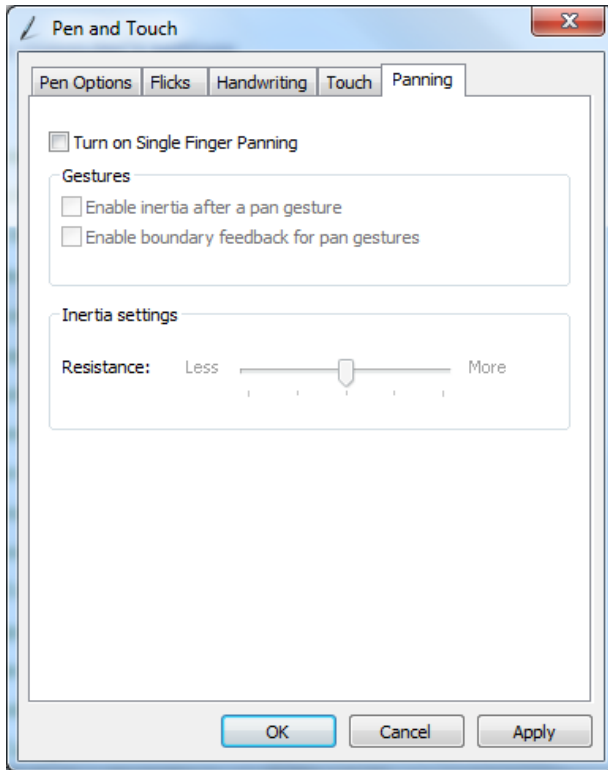


# Installing ISS45 on the NCR XR6 (7603) using POSReady 7

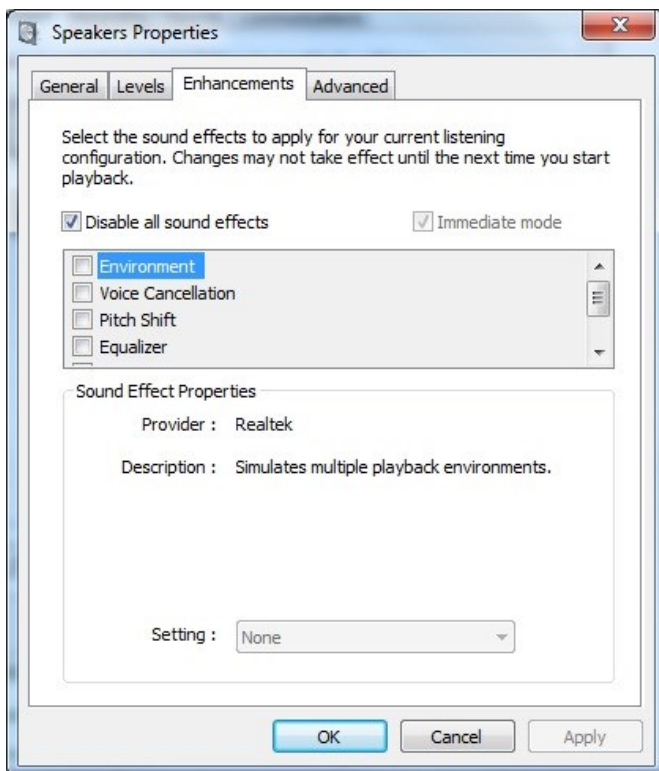
## Delete handwriting data when prompted



## Installing ISS45 on the NCR XR6 (7603) using POSReady 7



Click on Playback Tab, Click on Speakers, Click on Properties and Click on Enhancements Tab and Disable All sound effects. Do the same for any other speakers listed.



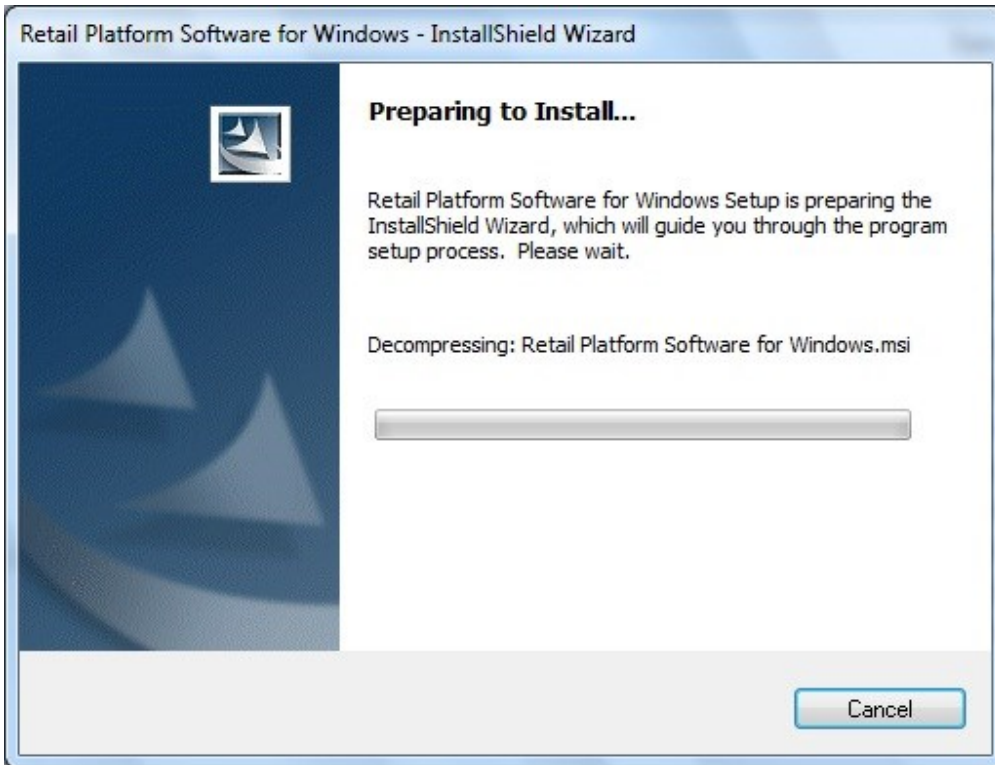
Installing ISS45 on the NCR XR6 (7603) using POSReady 7

### **Install NCR Retail Platform Software for Windows (OPOS).**

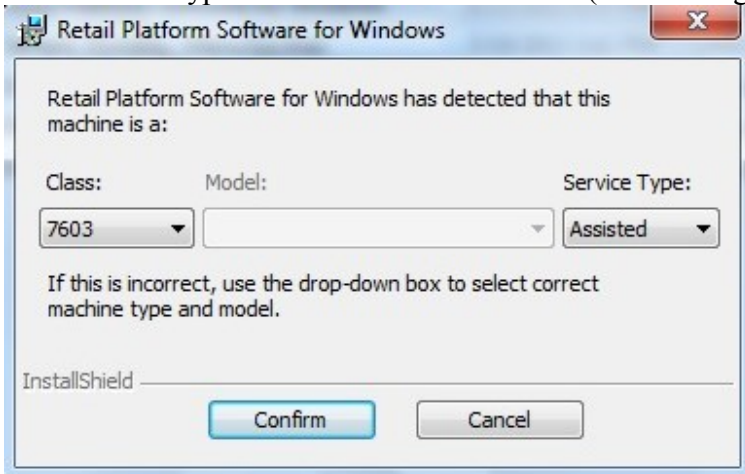
Obtain the Retail Platform Software for Windows version 4060.zip from the Channel Partners website. Create the folder RPSW under C:\Install\Drivers and copy the install files to that folder. Also download the V8NCROPOS.REG and place in the RPSW folder as well.

Right Click the Retail Platform Software for Windows.exe and Click Run as administrator.

The installation starts.

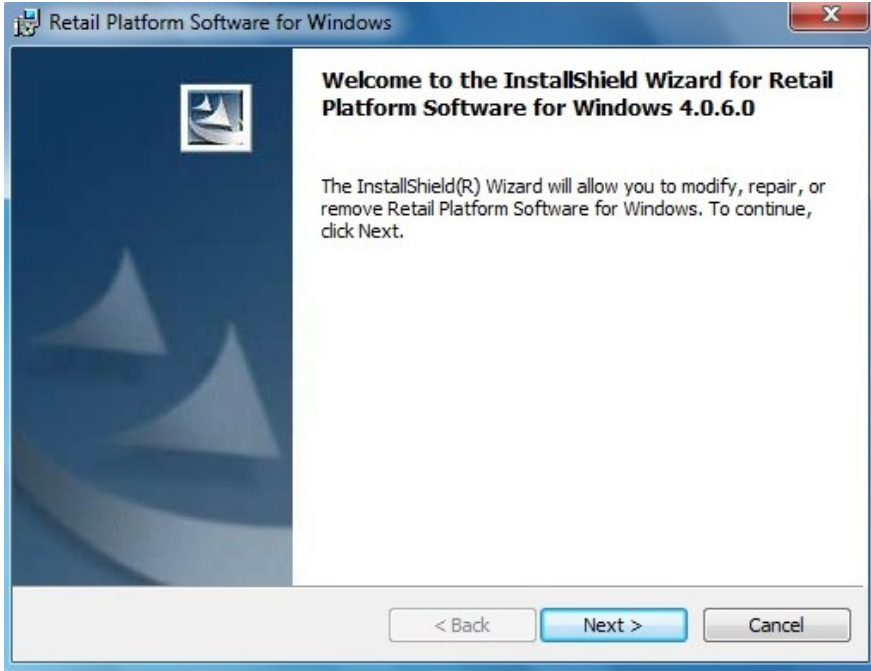


The machine type is detected. Click Confirm (don't change the other drop downs).

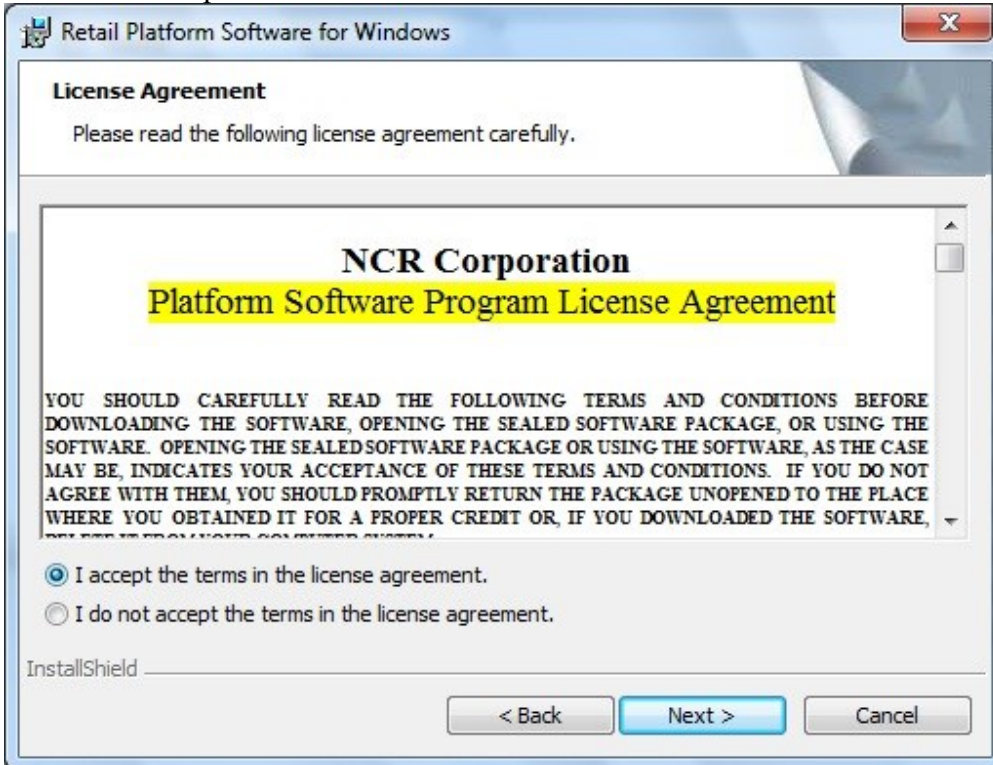


# Installing ISS45 on the NCR XR6 (7603) using POSReady 7

Click Next at the Welcome screen.

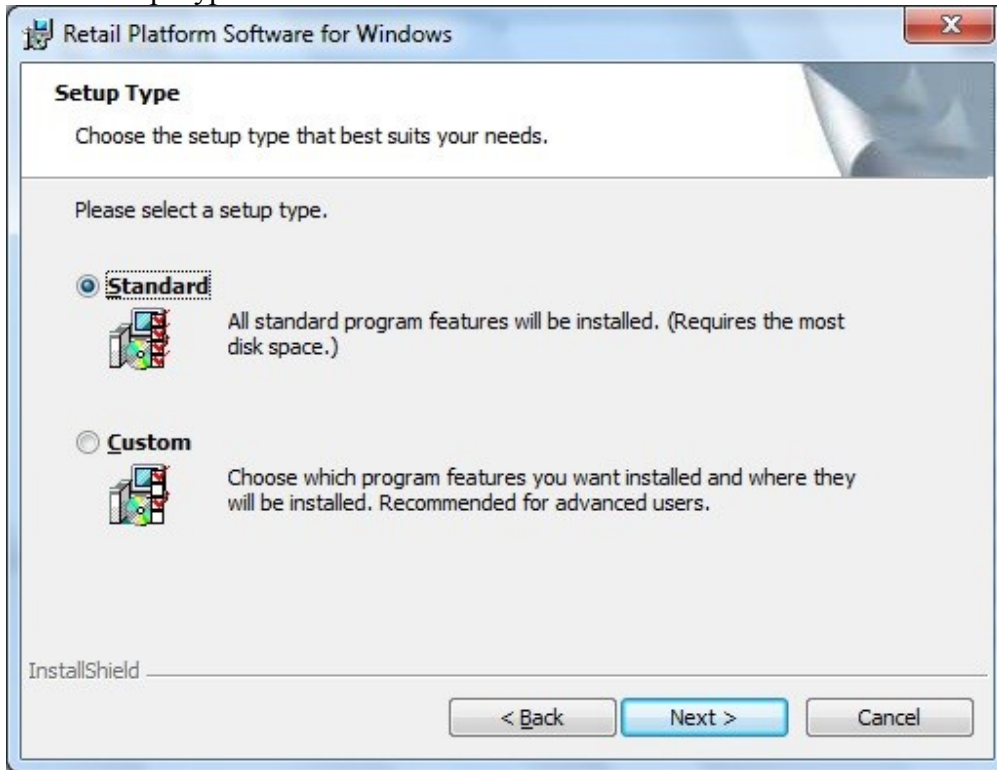


Click the I accept the terms ..... box and click Next.

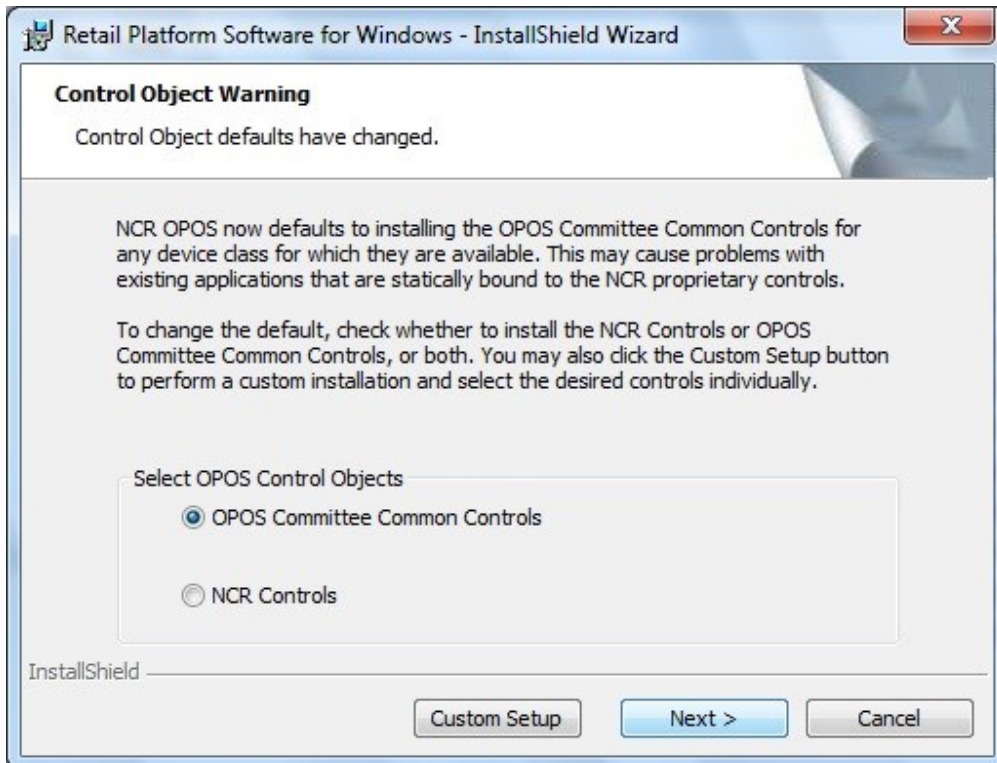


## Installing ISS45 on the NCR XR6 (7603) using POSReady 7

At the Setup Type screen select Standard and Click Next.

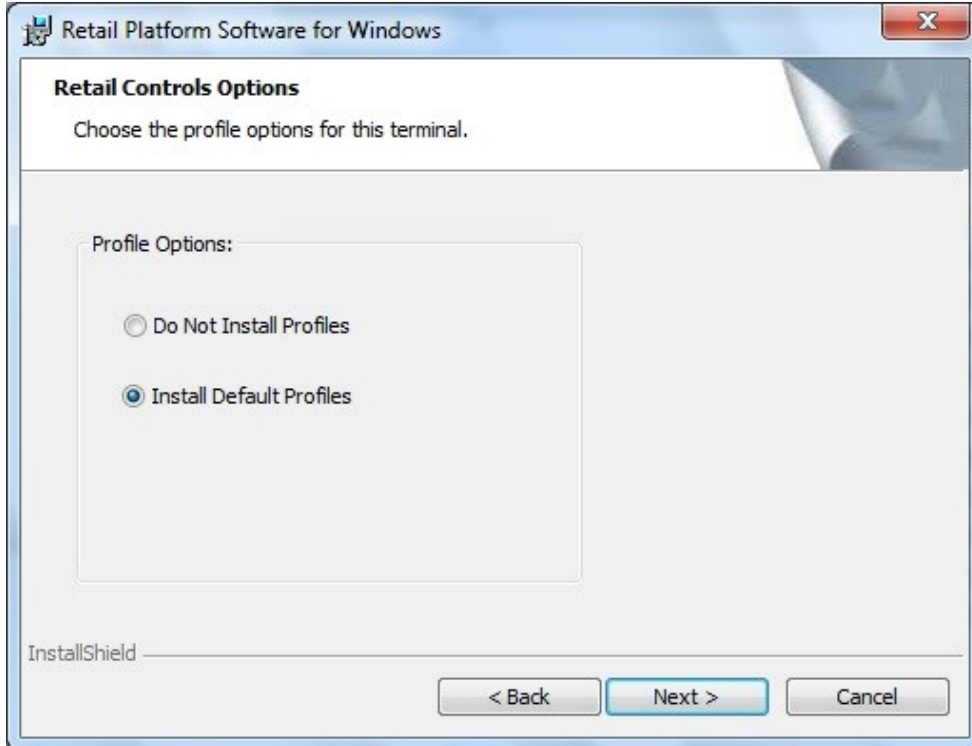


At the Control Object Warning screen select OPOS Committee Common Controls and click Next.

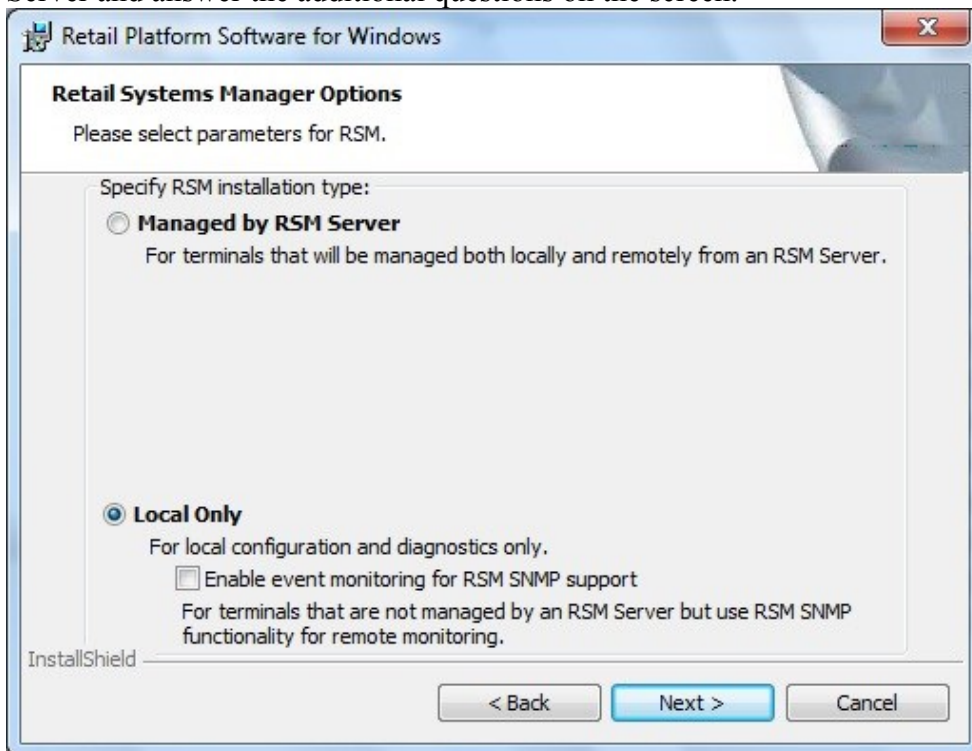


## Installing ISS45 on the NCR XR6 (7603) using POSReady 7

At the Retail Control Options screen select Install Default Profiles and click Next.

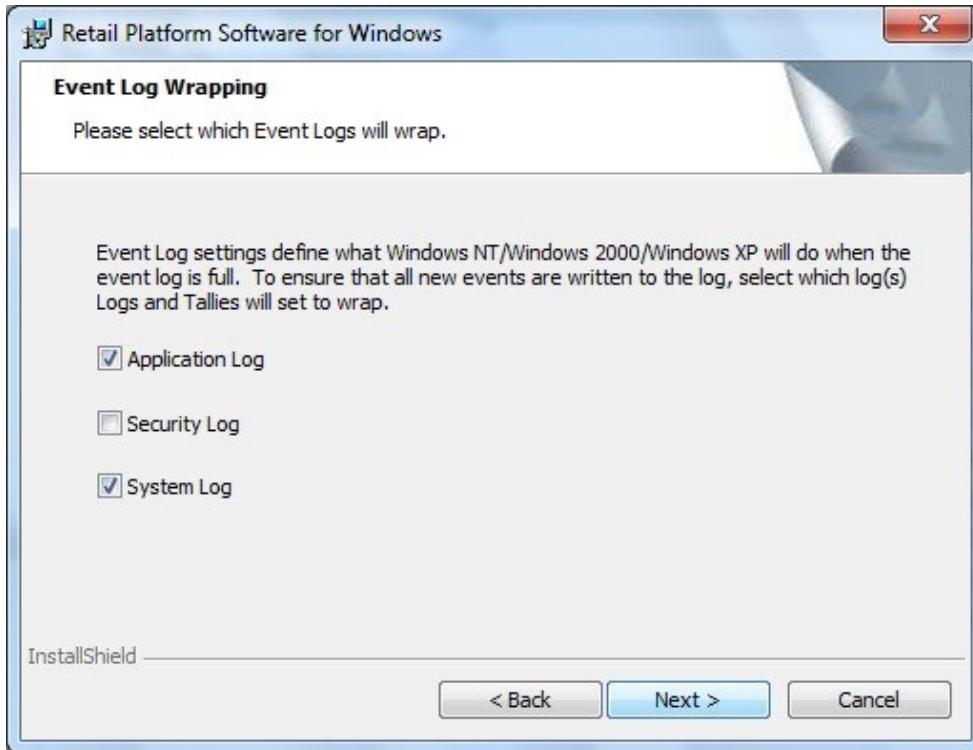


At the Retail Systems Manager Options screen select Local Only and click Next unless you are using a RSM server for remote management, in which case chose Managed by RSM Server and answer the additional questions on the screen.

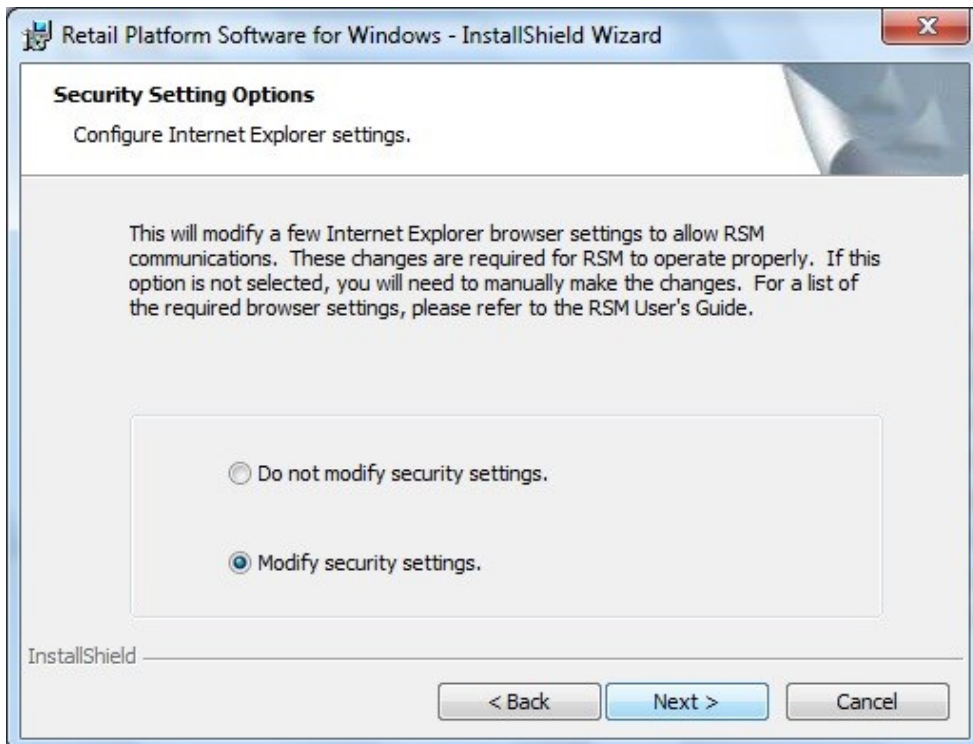


## Installing ISS45 on the NCR XR6 (7603) using POSReady 7

At the Event Log Wrapping screen click Next.

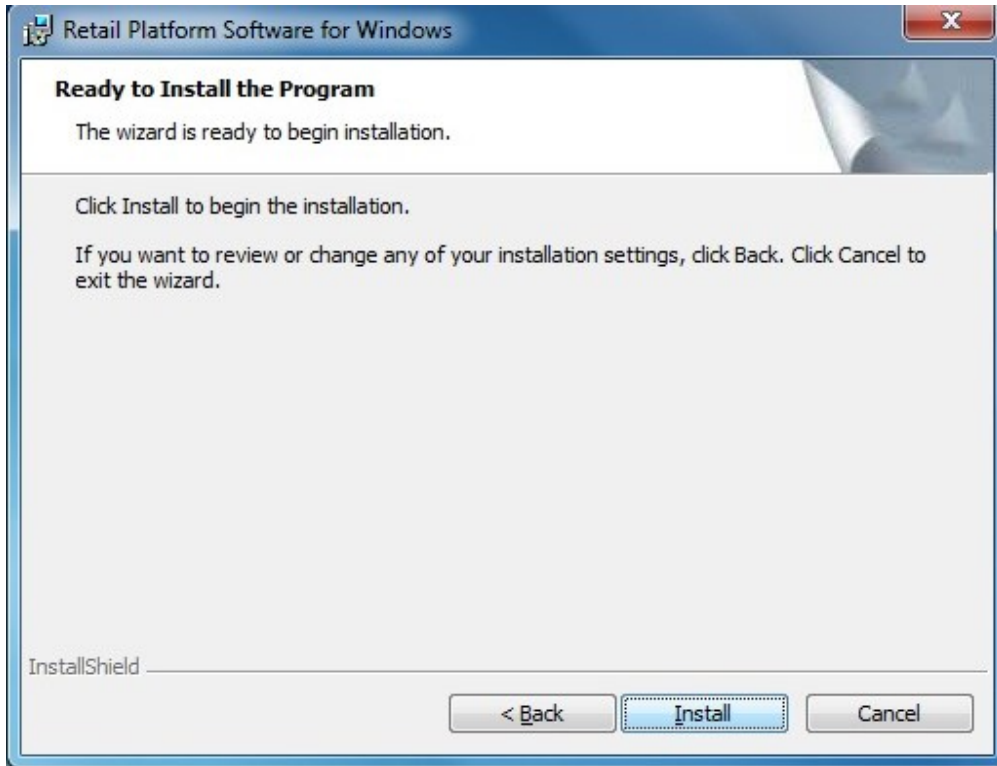


At the Security Setting Options screen select Modify security settings and click Next.

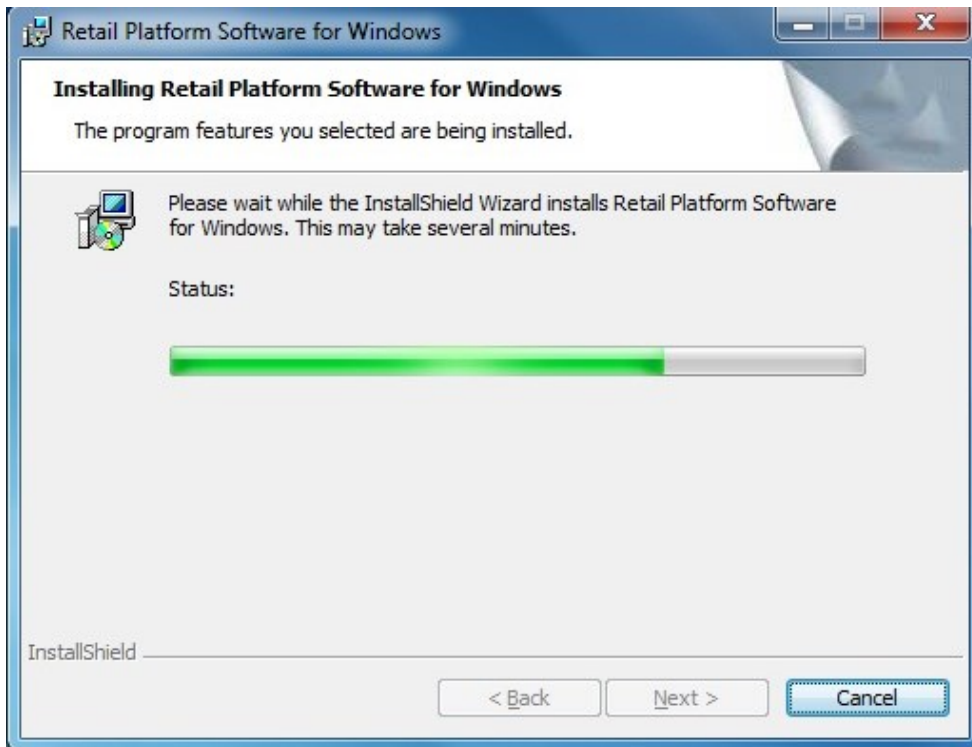


## Installing ISS45 on the NCR XR6 (7603) using POSReady 7

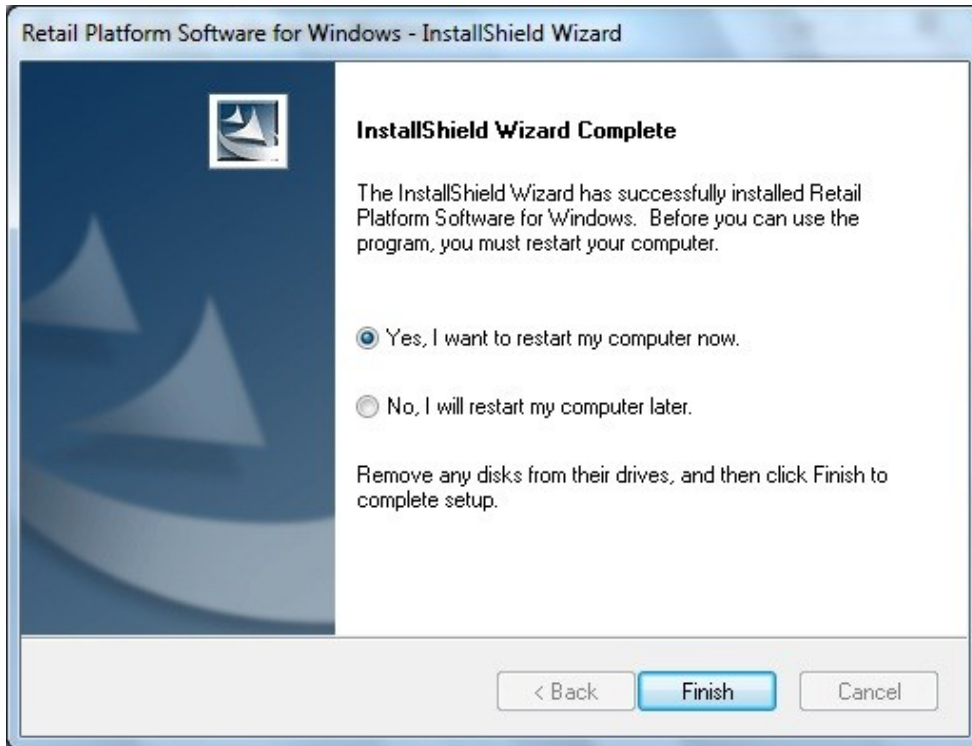
At the Ready to Install the Program screen click Install.



RSM is installed.



## Installing ISS45 on the NCR XR6 (7603) using POSReady 7



At this point attach the USB devices, i.e., POS printer, scanner. The Cash Drawer is to be plugged into the Cash Drawer port on the XR6 (7603) motherboard regardless of which printer is used.

At the restart message box click Yes.

At the completed screen click Finish.

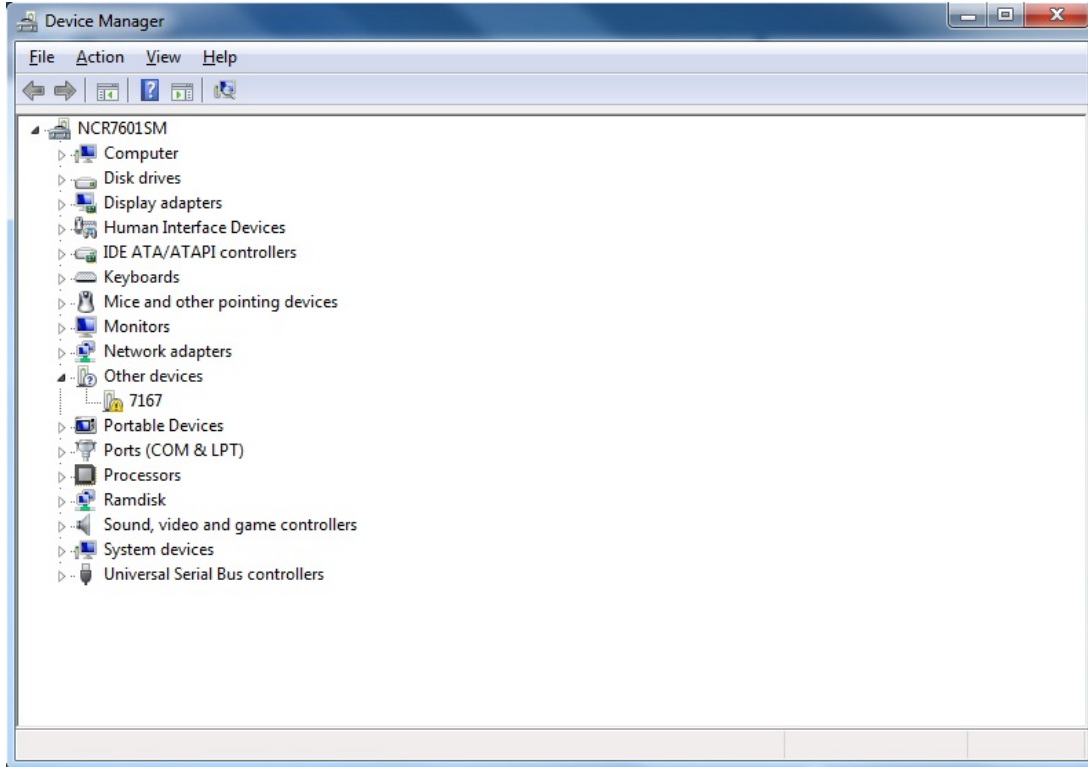
After reboot, logon as administrator.

Don't attempt to setup your devices at this point. That will be explained later in this document.

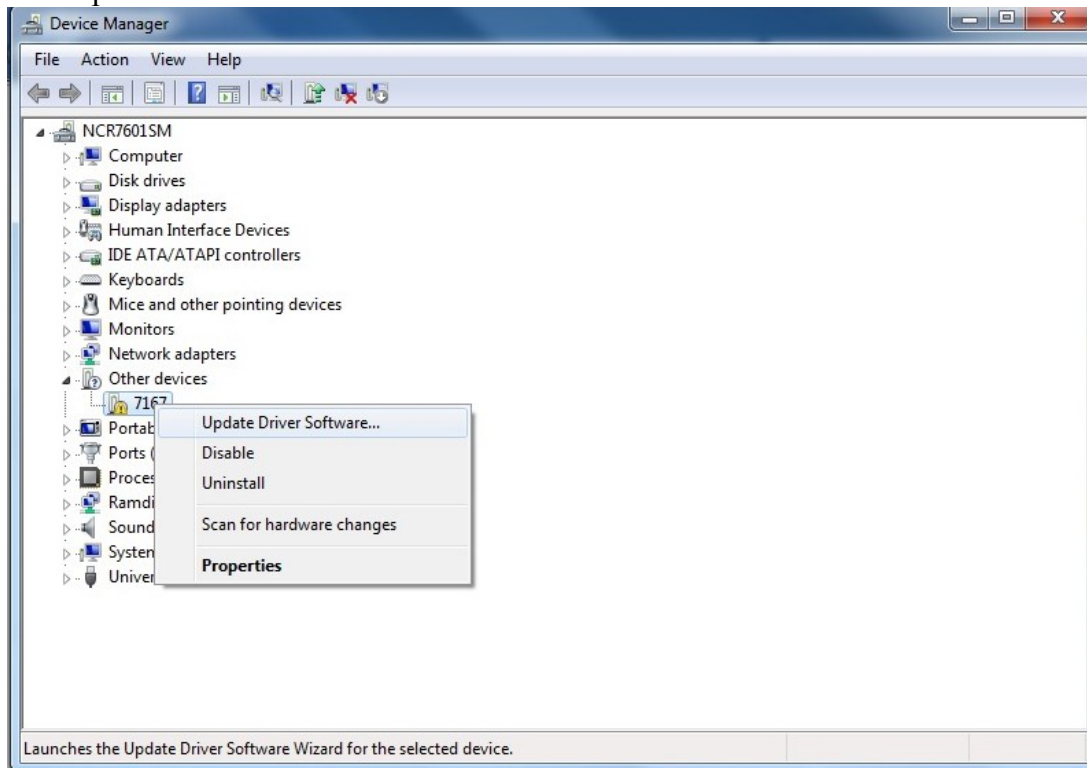
Installing NCR printer drivers (IONetworks). If you are using an Epson TM-6000III/IV USB printer, install the Epson OPOS and set up the printer via the Epson utility.

## Installing ISS45 on the NCR XR6 (7603) using POSReady 7

Click Start and go to the Control Panel. Click Device Manager.

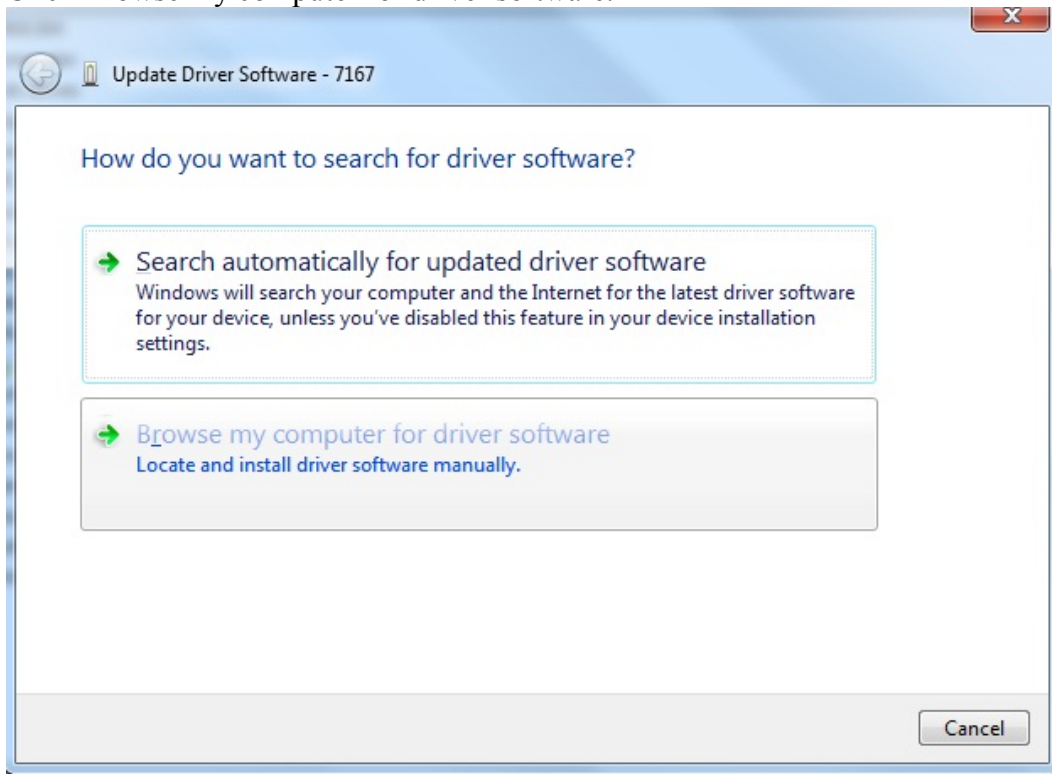


Under Other devices right click the device, i.e., 7167, with the yellow exclamation and click Update Driver Software.

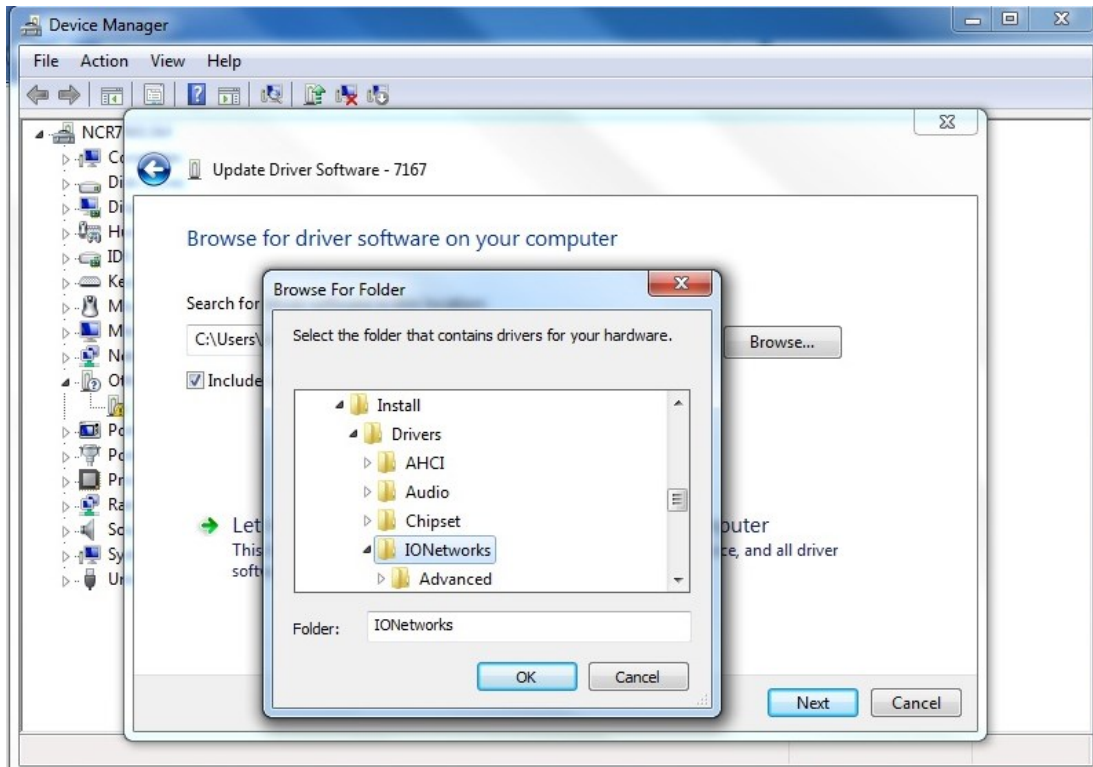


## Installing ISS45 on the NCR XR6 (7603) using POSReady 7

Click Browse my computer for driver software.

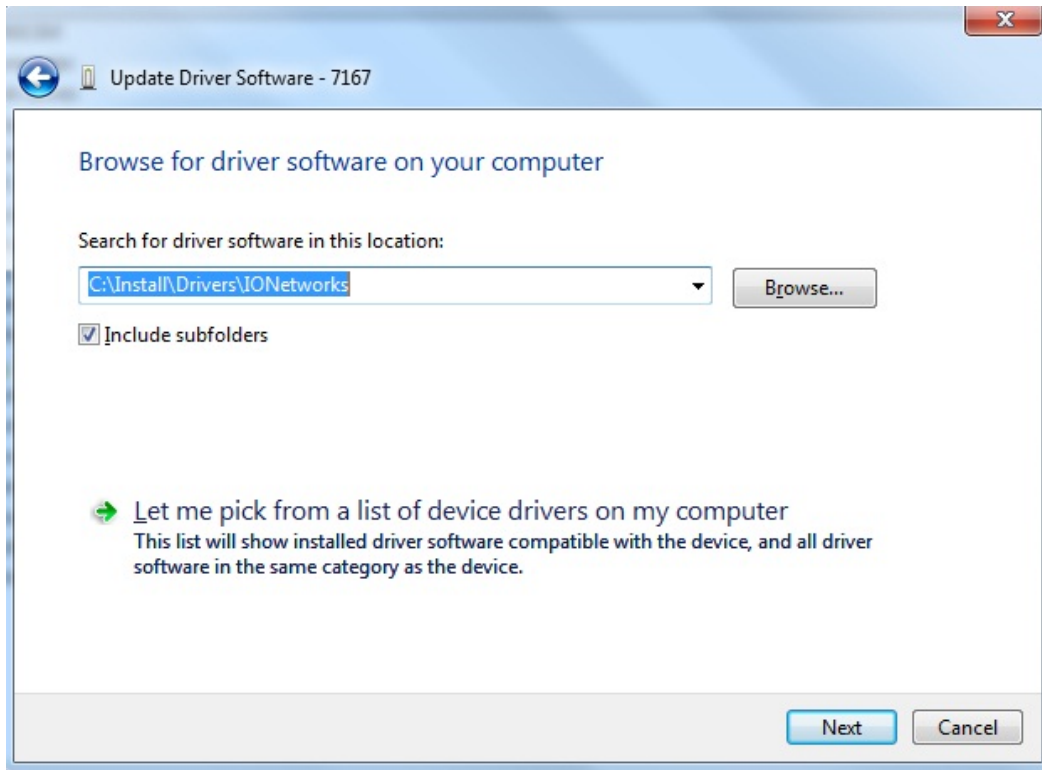


Browse to C:\Install\Drivers\IONetworks and click OK.

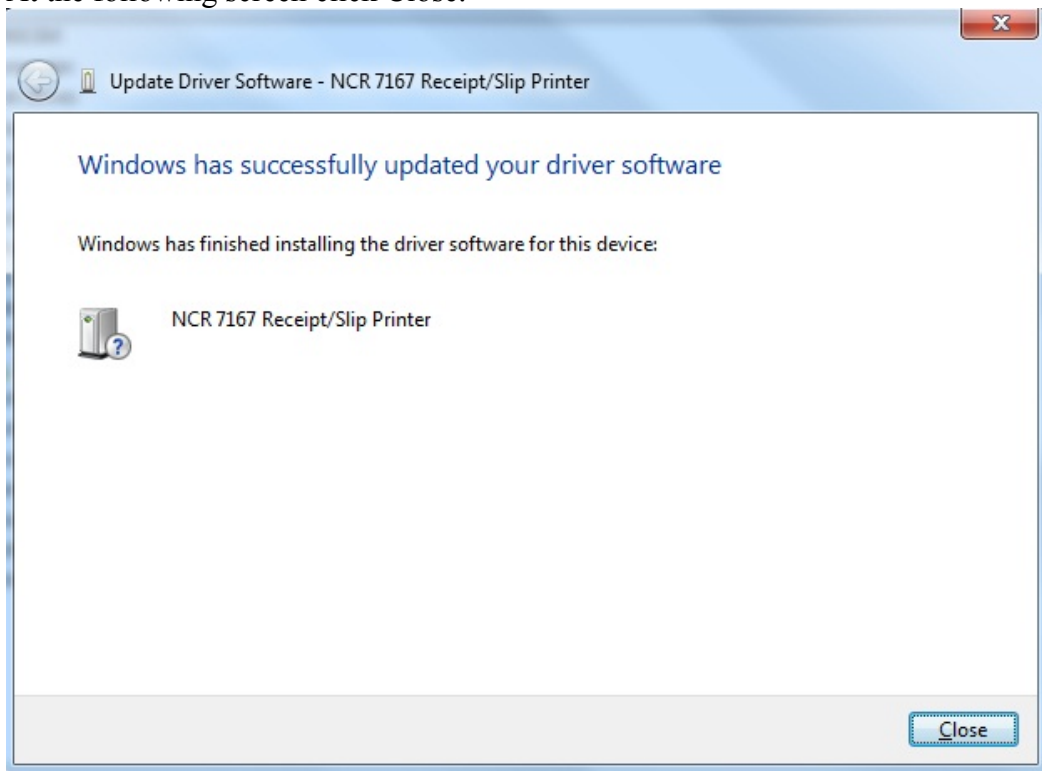


Click Next at the following screen.

## Installing ISS45 on the NCR XR6 (7603) using POSReady 7

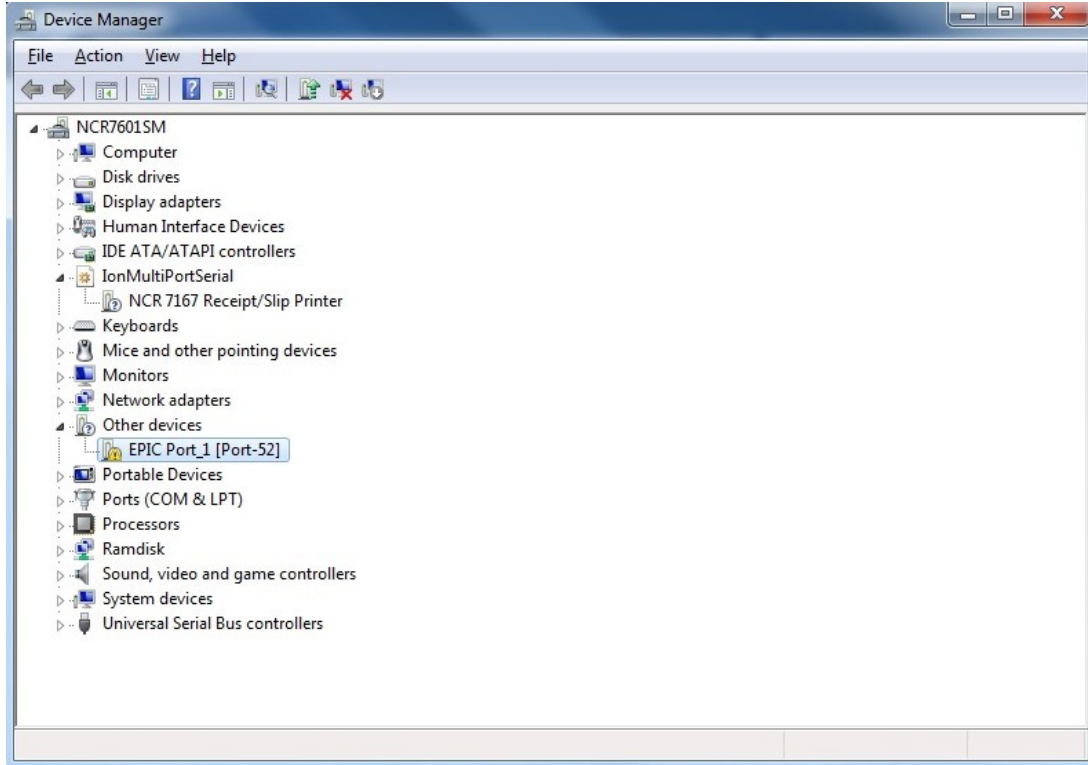


At the following screen click Close.



## Installing ISS45 on the NCR XR6 (7603) using POSReady 7

Go back to Device Manager and repeat the same steps for the EPIC Port device.



Close Device Manager and Control Panel.

From the C:\Install\Drivers\RPSW folder on the POS and double click V8NCROPOS.reg. This will install the Device Profiles. **ONLY DO THE FOLLOWING** if using an NCR 5954 Dynakey. Go to the C:\Install\Drivers\RPSW folder and double click the V8Dynakey.reg. This loads the keyboard map file. Now from the C:\Install\Drivers\RPSW folder, unzip the USBUtilities.zip to C:\Program Files\NCR\USB Keyboard. The USB Keyboard folder will need created. Once the files are in place, run the Install.bat file. Now place the 4 exe files that start with "Set" into the Startup folder.

**NOTE: If you ever uninstall NCR RSM(OPOS) and reinstall it will be necessary to go to the C:\Install\Drivers\RPSW folder on the POS and double click V8NCROPOS.reg to reinstall the correct Device Profiles. The Device settings will also need redone to match the attached devices.**

Open Explore window and navigate to the C:\Program Files\NCR\USB Keyboard folder. Highlight the 4 Set programs, right click and select Send to > Desktop create shortcut.

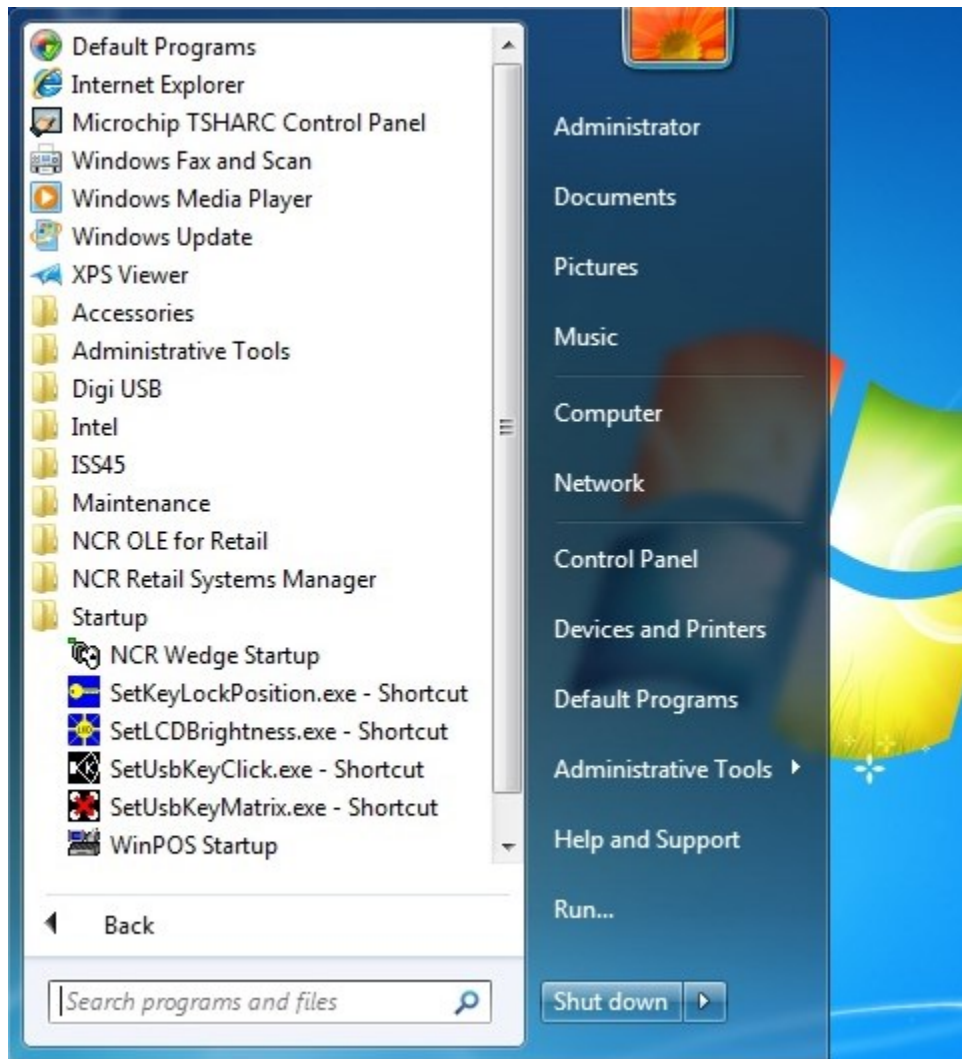
Go to the Desktop and highlight the 4 new shortcuts, right click and select cut.

Click Start, click All Programs, right click Startup and select Open from the drop down menu.

## Installing ISS45 on the NCR XR6 (7603) using POSReady 7

Paste the shortcuts into the right panel.

Verify that the shortcuts are in the Startup.

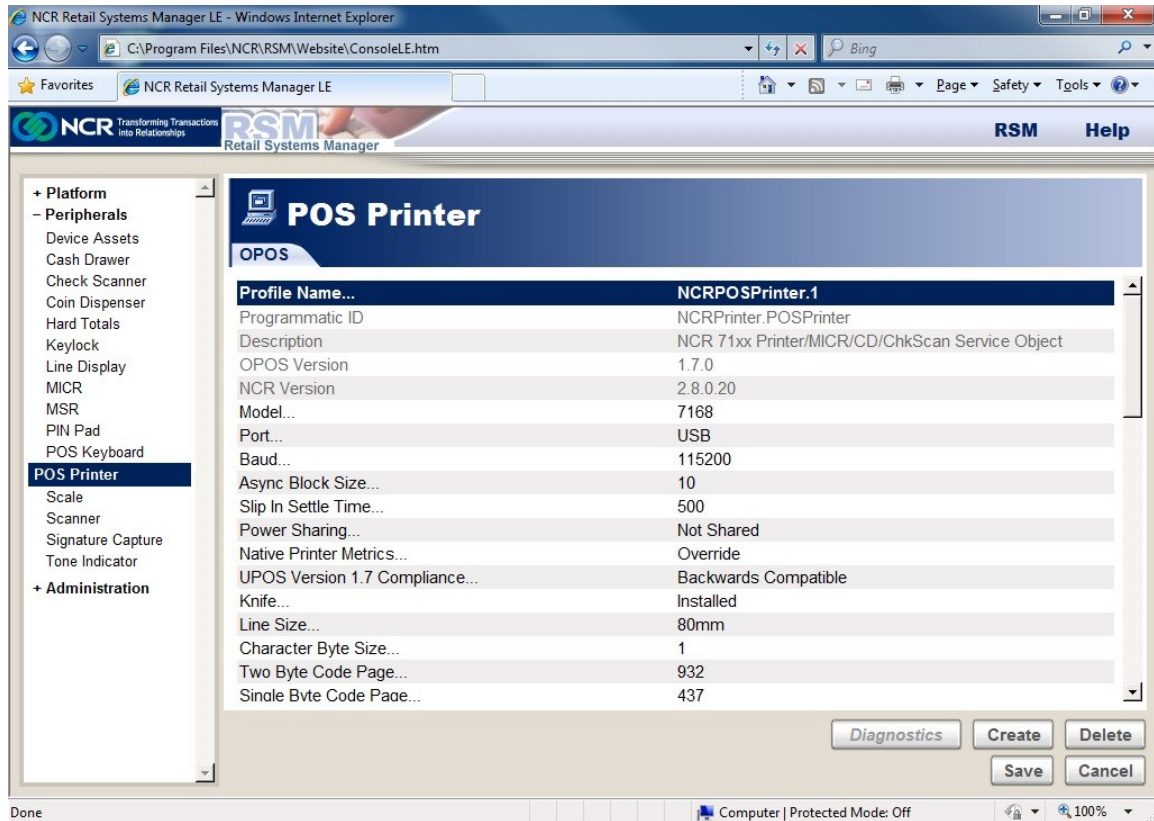


The following devices profiles were installed by the V8NCROPOS.REG file: NCRCashDrawer.1, NCRMICR.1, NCRPOSPrinter.1, NCRScale.7872, NCRScanner.7872 and NCRToneIndicator.1. Other profiles were installed via the RSM install but only those listed above are currently supported by ISS45. Changing to other profiles will cause device failures in ISS45 V8.

Some of the above profiles should work as is, however, some profiles such as NCRPOSPrinter.1, NCRScale.7872 and NCRScanner.7872 may need changed depending on which printer or scanner/scale is attached to the POS. It is not the intention of this document to document how to use the RSM LE setup. Information on this can be found on the NCR website. That said, the device setup is fairly straight forward and the following screen provides an example on device setup.

## Installing ISS45 on the NCR XR6 (7603) using POSReady 7

Run RSM LE and configure your devices.



Once you have chosen the correct profile (see choices above), you normally will only have to choose the correct Model number of your device. Always select USB as your Port. For the 7168 printer, there are some additional settings to choose single or double sided printing. If you want double sided printing go to the Two Sided Thermal Mode Option and select Double sided Automatic Split Receipt. (This requires special printer paper).

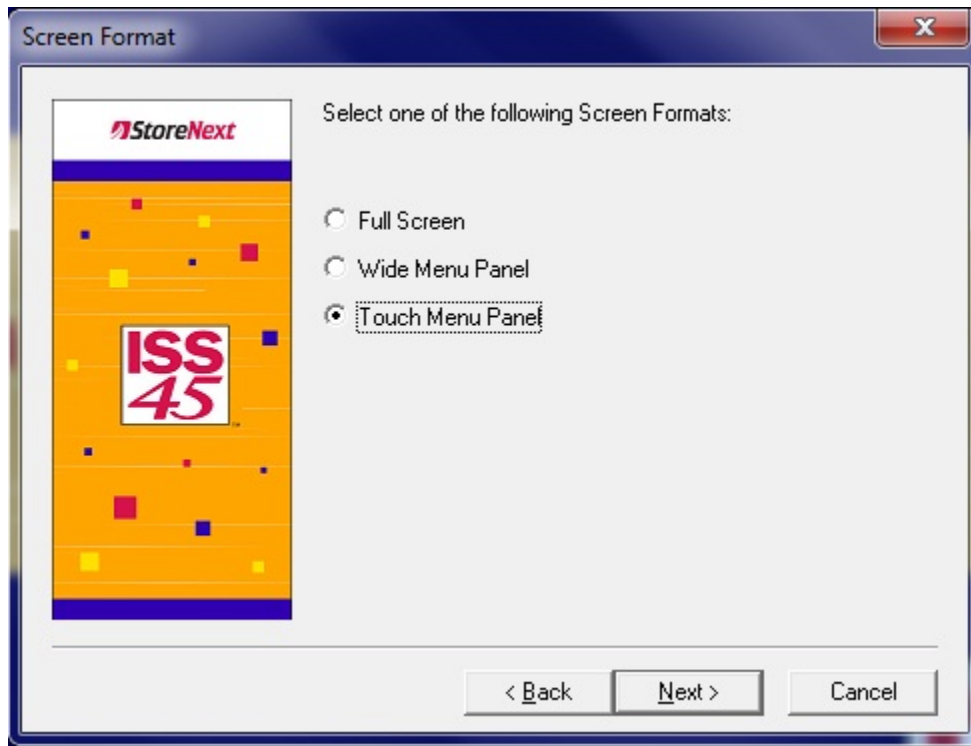
Now that the OS, network and device drivers are installed and configured, run the SN - Prerequisite Installer to install the required dot net.

After the reboot, you are now ready for the ISS45 V8 WinPOS install. See the Install guide on the website.

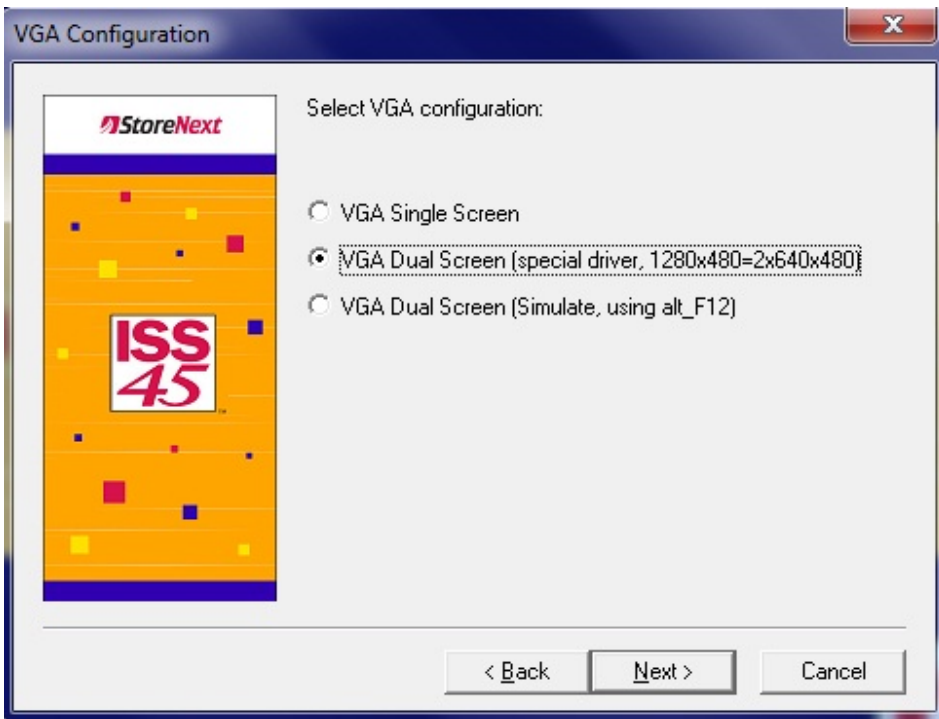
Use the following corresponding screens when doing the install. These are the only ones that are different.

## Installing ISS45 on the NCR XR6 (7603) using POSReady 7

If using a Dynakey, select Wide Menu Panel else select Touch Menu Panel.

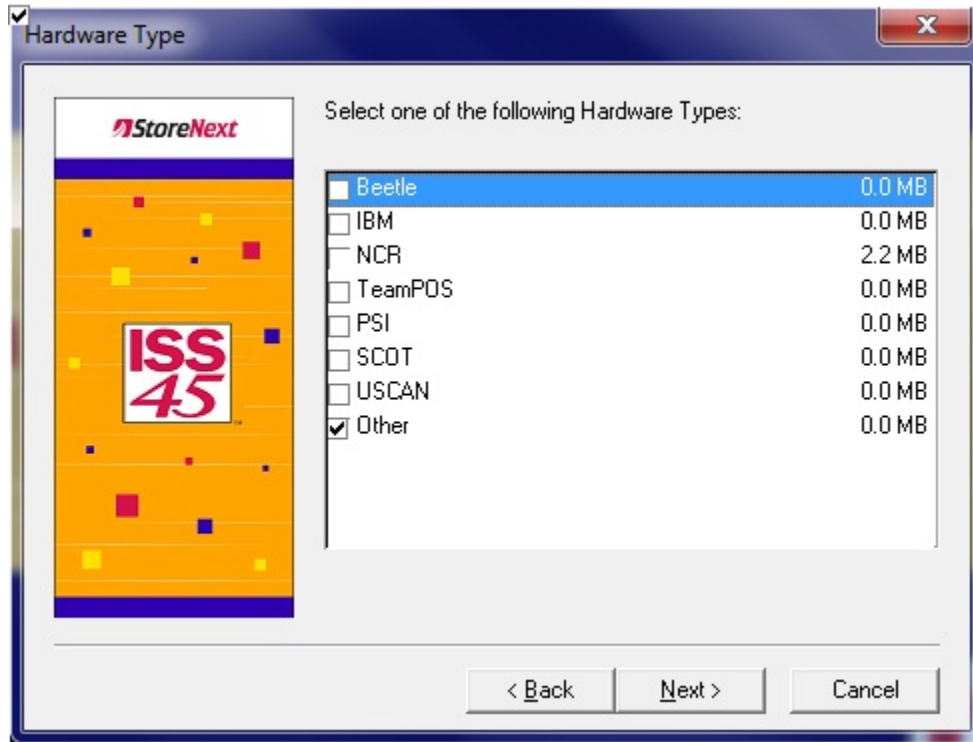


If using dual monitors select the following else select VGA Single Screen.



## Installing ISS45 on the NCR XR6 (7603) using POSReady 7

Under Hardware Type select Other.



Depending on the installed devices, setup the following OPOS devices in the FrontOffice POS Configuration. If using the Epson TM-H6000IIIU/IVU then install the Epson OPOS using the ADK268E.exe and set it to be TM-H6000IIIU for the Printer and the MICR:

## Installing ISS45 on the NCR XR6 (7603) using POSReady 7

Post Configuration

POS Number:  POS Type:   Active till

General | WinPOS H/W | Non WinPOS 1 | Non WinPOS 2 | Auth. - EFT - I/F | E-Ticket - OPOS

E-Ticket

E-Ticket Active Virtual POS Number:  Virtual Cashier Number:

OPOS

OPOS Printer Driver Name:

OPOS Line Display Driver Name:

OPOS Drawer 1 Driver Name:

OPOS Drawer 2 Driver Name:

OPOS Scanner 1 Driver Name:

OPOS Scanner 2 Driver Name:

OPOS Scale Driver Name:

OPOS MICR Driver Name:   Use OPOS MICR

OPOS MSR Driver Name:   Use OPOS MSR

OPOS Keyboard Driver Name:

OPOS KeyLock Driver Name:   Use OPOS KeyLock

OPOS Coin Dispenser Driver Name:   Use OPOS Coin Dispenser

OPOS Check Scanner Driver Name:   Use OPOS Check Scanner

Navigation buttons: [Back] [Forward] [OK] [Cancel] [Apply]

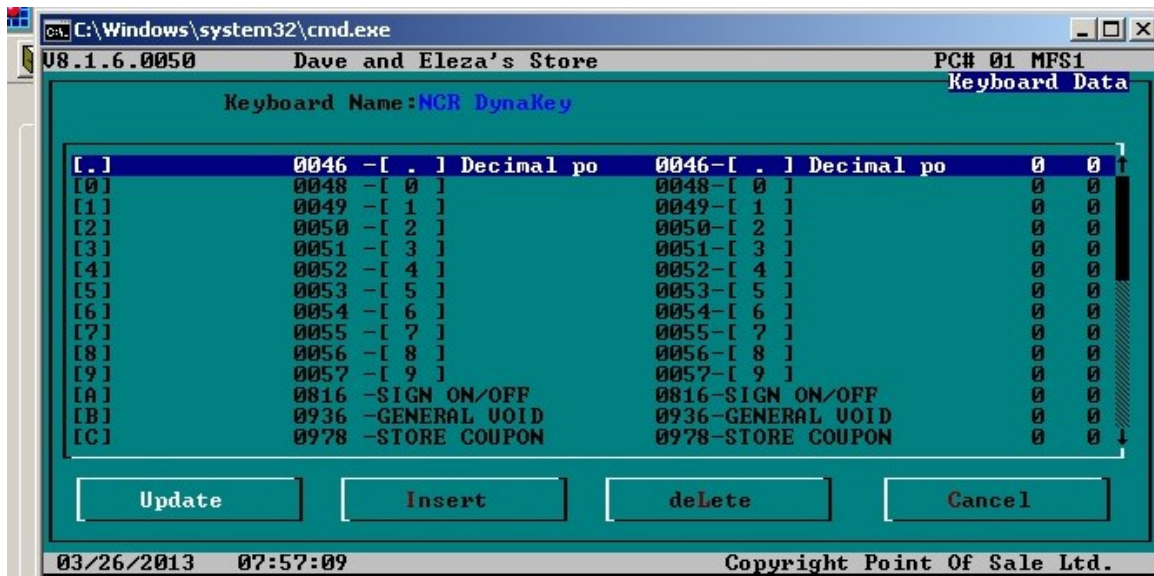
Additional setup information:

Printers – set or build appropriate templates for check writing.

Menusys.mac – a Sample\_Dynakey\_menusys.mac file is included in the website download for ISS45 V8. This is intended as an example of how some of the Dynakeys are setup and is not a full implementation. It is up to the Dealers to setup the menusys.mac file to meet the customer's requirements.

Keyboard programming – It is also the Dealers responsibility to map the non-Dynakeys to the appropriate functions. Following is a sample of how the certification keyboard was programmed to match the installed Dynakey mapping.

Installing ISS45 on the NCR XR6 (7603) using POSReady 7



The 8 Dynakeys are mapped as LShift- F1 thru LShift F8 and ARE NOT to be setup in the above keyboard programming.

FrontOffice POS Configuration settings for Dynakey registers:

Setup a keyboard type for the NCR Dynakey and assign that keyboard number in the POS Configuration General Tab. On the WinPOS H/W Tab, set the keyboard type to Dynakey non-OPOS. If using a touch Dynakey, set the Touch Screen type to None on the Non WinPOS 1 tab.

In the WinPOS.ini file check/set:

TouchPanelRows =8

TouchPanelColumns=1

Installing ISS45 on the NCR XR6 (7603) using POSReady 7

MenuShiftKeys=Yes (Note: if you remap the F1 thru F8 keys to not use a shift this option will need set to No).

**IMPORTANT: The Dynakey keyboards ships with the Keylock in the L position disabling the keyboard. Prior to using the Dynakey, put the Keylock in either the R or S position.**



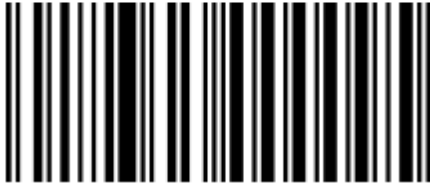
## Installing ISS45 on the NCR XR6 (7603) using POSReady 7

Following are the scan tags and sequences to program the 78xx scanners. Once the OPOS devices are setup and programmed the POS should be ready for use.

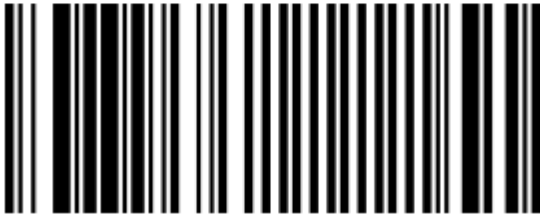
78XX Scanner programming tags:  
To Program the 7874 / 7878 for ISS45 V8

(Start)

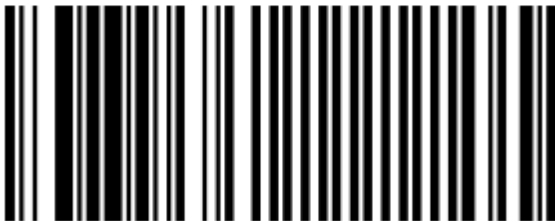
Reset



Default



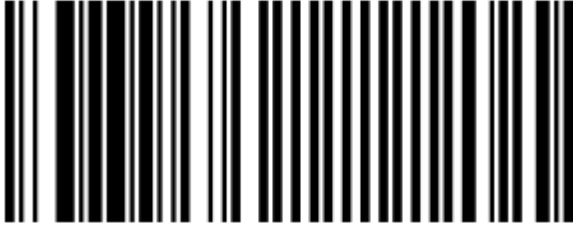
Programming Mode



Installing ISS45 on the NCR XR6 (7603) using POSReady 7

(Set to USB Communication Protocol)

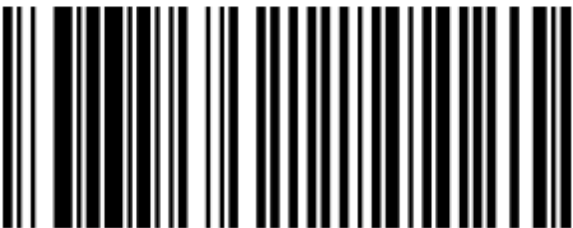
Hex 1



Hex 0



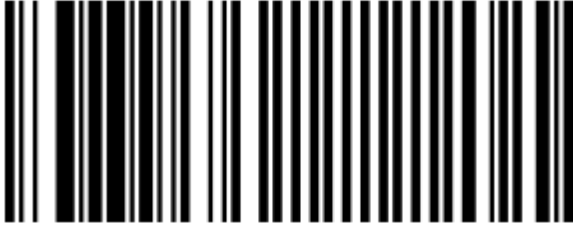
Hex D



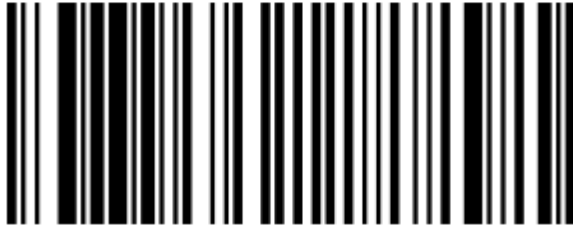
Installing ISS45 on the NCR XR6 (7603) using POSReady 7

(Enable periodical codes)

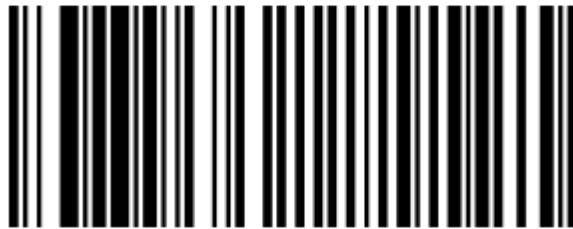
Hex 1



Hex 3

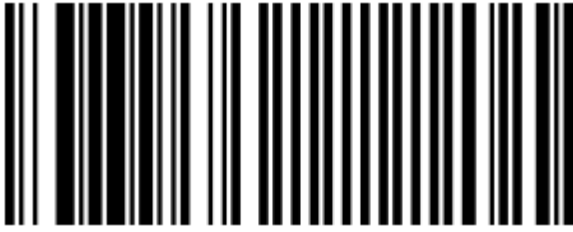


Hex E

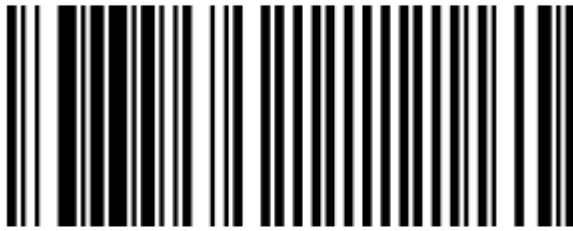


Installing ISS45 on the NCR XR6 (7603) using POSReady 7

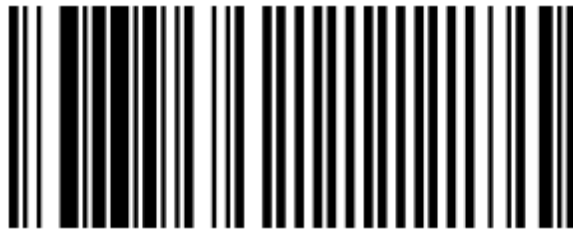
Hex 1



Hex 2



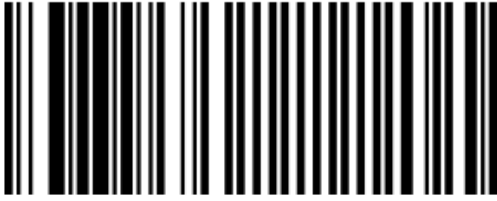
Hex 0



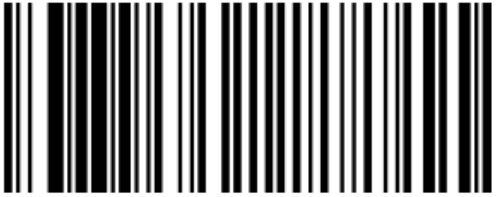
Installing ISS45 on the NCR XR6 (7603) using POSReady 7

(Enable Code 128)

Hex 1



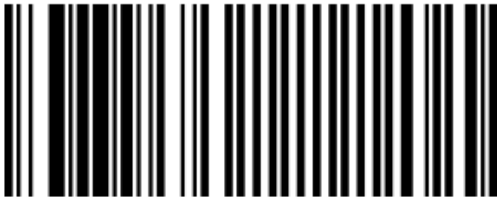
Hex 7



Hex A



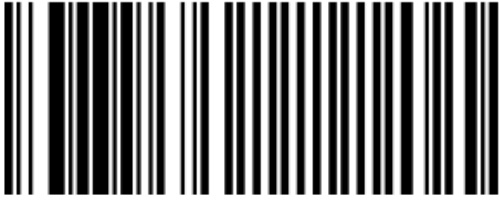
Hex 1



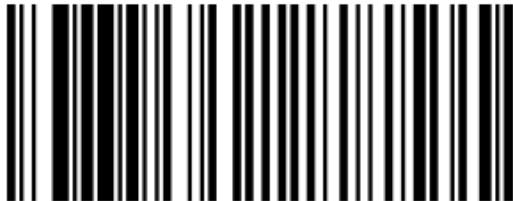
# Installing ISS45 on the NCR XR6 (7603) using POSReady 7

(Enable DataBar)

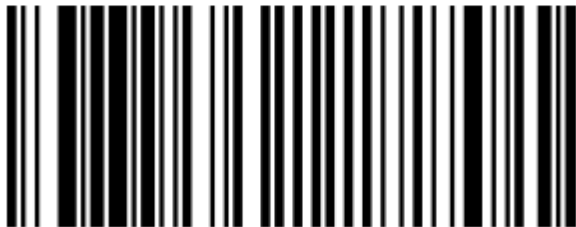
Hex 1



Hex 8



Hex A



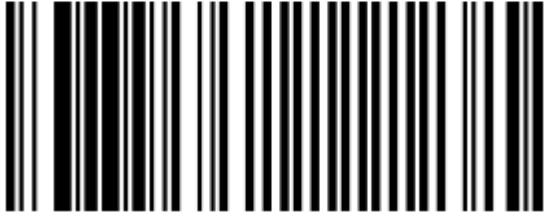
Hex 3



Installing ISS45 on the NCR XR6 (7603) using POSReady 7

(Finish)

Save and Reset





© NCR Corporation, 2015

NCR endeavors to ensure that the information in this document is correct and fairly stated but does not accept liability for any error or omission.

The development of NCR products and services is continuous and published information may not be up to date. It is important to check the current position with NCR. This document is not part of a contract or license, save insofar as may be expressly agreed.

---

**NCR Corporation**  
2651 Satellite Blvd.  
Duluth, GA 30096

**P/N 89000859**  
**PIN 45001/032**