




A decorative graphic at the top of the page consisting of a horizontal grey bar with several overlapping squares in dark blue, red, and white, some with black outlines.

 *Retalix BackOffice*
 *Release Notes*
 *Version 4.7.1-050*



RBO Release Notes

Date of Issue	Product Identification Number	Part Number	Brief Description
May 2003	45001/072	89000135	Initial Release – 4.2
November 2004	45201/072	NPN	4.3 Release
March 2005	45201/072	89000206	4.4 Release
July 2005	45201/072	89000357	4.5 Release
January 2006	45201/072	89000360	4.5.1 Release
April 2006	45201/072	89000363	4.5.2 Release
April 2007	45201/072	89000367	4.5.3 Release
January 2008	45201/072	89000481	4.6.0 Release
February 2010	45201/072	89000544	4.7.1 Release

**©Copyright StoreNext Retail Technologies LLC 1995-2010
All rights reserved**

This publication is protected by federal copyright law. No part of this publication may be reproduced or transmitted into any human or computer language in any form or by any means, stored in a retrieval system, transmitted, redistributed, translated or disclosed to third parties, or de-compiled in any way including, but not limited to, photocopy, photograph, electronic, mechanical, magnetic or manual without the express written permission of StoreNext Retail Technologies LLC or its licensors, if any. All copies, so authorized, shall contain a full copy of this copyright notice.

StoreNext Retail Technologies LLC endeavors to ensure that the information in this document is correct and fairly stated but does not accept liability for any error or omission. StoreNext Retail Technologies LLC makes no representation or warranties with respect to the contents hereof, and specifically disclaims any implied warranties of merchantability or fitness for a particular purpose or non-infringement. No commitments by StoreNext or its suppliers are made from this documentation which is provided for information only.

Development of StoreNext products and documentation is continuous: StoreNext Retail Technologies LLC reserves the right to revise this publication and to make changes from time to time in the contents hereof or in the products herein described or discussed without notice and without any obligation of StoreNext Retail Technologies LLC to notify any person or organization of such revision or changes. Information published in this document will likely become obsolete over time and it is recommended that users regularly check for updates and newer versions.

StoreNext Retail Technologies LLC has prepared this manual for use by users, authorized third parties and personnel of StoreNext Retail Technologies LLC as a guide to the proper installation, operation, customization and/or maintenance of StoreNext Retail Technologies LLC equipment and software. The drawings and specifications contained herein are the property of StoreNext Retail Technologies LLC and/or its licensors.

Third-party products, services, or company names referenced in this document may be trademarked or copyrighted by their respective owners, and are for identification purposes only.

Copyrights, trademarks and license agreements shall be governed and construed in accordance with the laws of the State of Texas and the Federal Arbitration Act, and shall benefit Retailix, its successors, and assigns.

Address comments and corrections to:

StoreNext Retail Technologies LLC
Software Program Director
6100 Tennyson Parkway
Suite 130
Plano, Texas 75024

Table of Contents

Retail BackOffice Release Notes	4
General	4
Installing RBO with SQL Server Express	5
Determining when SQL Server Express can be used	5
SQL Server Express 2005 Installation recommendations	5
Installing RBO for ISS45	6
Version 8	6
Version 7	6
Installing RBO for ScanMaster	7
Installing RBO for NCR ACS-IR	8
Updating RBO	9
What's New in 4.07.01	10
Inventory Source Item	10
File Build	11
Report Grouping	11
ISS45 V8 Loyalty Enhancements	14
CVV WIC Support	14
ScanMaster Gift Card Changes	14
Export of Named Codes to Label Printing	14
Sorting Invoice Reports	14
POS Release Compatibility	16
Database changes	17
Changed Tables	17
Resolved Issues	19
Open Issues	20
ScanMaster Open Issues	21
ISS45 V7 Open Issues	21
ACS-IR Open Issues	22
ACS-IR Apply Process	23

Retalix BackOffice Release Notes

Release:	4.07.01				
Date:	October 2009				
Goal of Release:	General Release				
O/S Support:	Windows 2000				
	Windows 2003 Server				
	Windows XP Professional				
	Windows Vista Business Edition				
DB Support:	SQL Server 2000 Standard Edition				
	SQL Server Workgroup				
	SQL Server 2005 (includes Express Edition)				
POS Type	ISS45 V7	ISS45 V8	ScanMaster	ACS-IR	
Latest Tested Release	7.1.3.0-90	8.1.4.1-50	1.4.0-50	2.6.1-50	6.01.04

Installation/Update information

General

Be sure the RBO computer must be connected to a network.

The RBO default user name is **Admin**. You should add additional users through security maintenance. See the RBO Users Guide for instructions.

You should apply the most recent SQL Server service packs available from Microsoft.

Users are not automatically granted Read/Write/Execute permissions to shares in Windows Server 2003. When installing Stylus and sharing the Insignia folder as per the installation instructions, you must modify the share permissions to allow users and administrators Read/Write/Execute permissions.

To reduce or eliminate prompts while running on Windows Vista, you can disable the User Account Control (UAC). Check with your computer support professionals for recommendations and assistance.

To accommodate the additional disk space that movement history will require, it is recommended that RBO be installed on 10gb or greater partition.

For best performance, 512mb or greater memory is recommended on the RBO Server.

Installing RBO with SQL Server Express

RBO may be installed with SQL Server Express as the database server for **V7, ScanMaster** and **NCR ACS-IR** installations. SQL Server Express 2005 is a royalty-free version of the SQL Server 2005 database server and is available from the Microsoft web site. SQL Server Express must be installed prior to installing RBO.

Determining when SQL Server Express can be used

SQL Server Express is not always the best option as a database for use with RBO. The following are pre-requisites and guidelines for determining when SQL Server Express is appropriate.

Pre-Requisites

- SQL Server Express may only be used in a non-ISS45 V8 environment.
- SQL Server Express requires .NET Framework 2.0, which must be installed separately from and prior to installing SQL Server Express
- SQL Server Express requires Microsoft Internet Explorer 6.0 and greater.

Guidelines

Refer to the document “Getting Started Guide” for the preferred installation to use with RBO.

SQL Server Express 2005 Installation recommendations

Please refer to the installation instructions for SQL Server Express from Microsoft for pre-requisites and installation procedures.

Installing RBO for ISS45

Version 8

- Install RBO on MFS1.
- Set the ISS45/StoreLine parameter “Update All Mix and Match Groups When One PLU Changed” to **No**.
- Set the following parameters in ISS45:
 - General System Parameters
 - Store>Front Office>PLU and Batch>Batch Options
 - Use Fast PLU Batch Execution = **Yes**
 - Store>Front Office>PLU Options>Validation
 - Force short and long description to match = **No**
 - Store>POST>Monetary>Frequent Shopper>Frequent Shopper Mode
 - Frequent shopper type
 - **Enhanced frequent shopper (type2)**
 - Store>Front Office>System>Object Security
 - Enable PLU Object Security In System = **No**

Reboot the system after making this last change

- The PLU Maintenance and PLU Batch features from the PLU Management menu in ISS45 Office are removed from the menu system. This is done to prevent data entry outside of RBO and keep the files synchronized.
- ISS45 Office Client must be installed where a RBO client is installed.
- To accommodate existing servers that have a computer name that begins with a number, the host file must be updated to include an entry for MFS1 that corresponds to the server’s IP address. The entry should resemble: 192.1.1.10 MFS1
- SQL Server must be installed according to ISS45/StoreLine Office Installation instructions. Specifically, the Collation Settings must be set for **Binary order for use with the 850 (Multilingual) Character Set**. Failure to install SQL Server correctly will render the Fast PLU Release feature in RBO incompatible with ISS45/StoreLine

Version 7

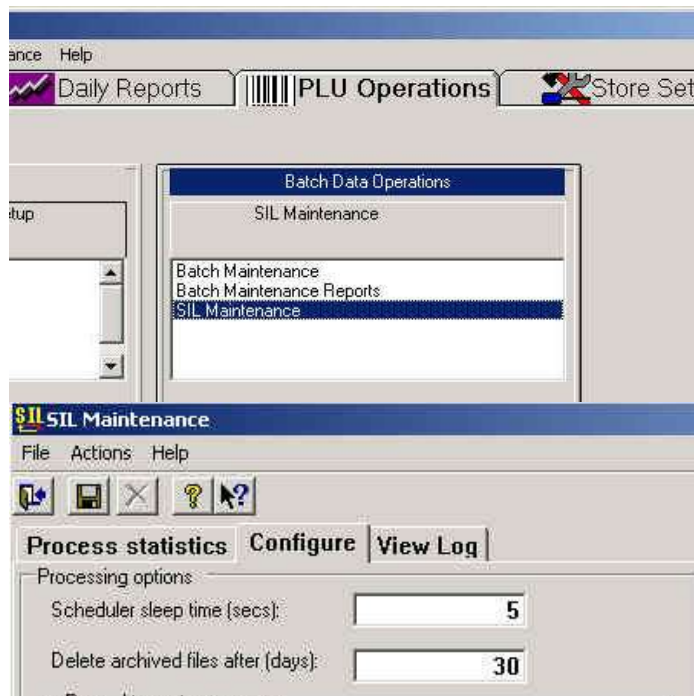
- RBO Server may be installed on MFS1, MFS2 or any stand-alone Windows Server or Workstation (if using SQL Server Express). The Retailix StoreLine Communications Repository must be installed on MFS1. Refer to the [Getting Started Guide](#) for installation instructions.
- ISS45 Office Client must be installed on any RBO system where item maintenance will be performed.
- The Parameter “PLU follow department flags as default” should be unchecked to permit the update of department governed flags on the POS from RBO.

Installing RBO for ScanMaster

- Installation instructions for ScanMaster 1.X are provided in the \Other folder on the RBO installation CD. Please refer to the folder entitled “Pervasive for ScanMaster 1.2” for instructions.
- Installation instructions for ScanMaster 2.0 are provided in the \Other folder on the RBO installation CD. Please refer to the folder entitled “Pervasive for ScanMaster 2.0” for instructions.
- Installation instructions for ScanMaster 2.1 and greater are provided in the \Other\ folder on the RBO installation CD. Please refer to the folder entitled “Pervasive for ScanMaster 2.1” for instructions.
- Disable ScanMaster Enhanced Pricing
- Install a ScanMaster Client on any RBO client performing item maintenance
- Run Setup from the Retailix ScanMaster Movement folder under the \Other folder on the RBO installation CD to install the RBO movement update services

Installing RBO for NCR ACS-IR

- RBO must be installed on a system other than the ACS Primary or Secondary.
- Following the RBO Installation, installation of the Retalix ACS Repository must be performed on the ACS Primary and Secondary servers.
- To install the Retalix ACS Repository, follow instruction from the RBO installation CD in the [\Other\RBO ACS Communications\ACS Communications Getting Started Guide.pdf](#)
- To reduce the default wait time for maintenance to apply to the ACS-IR system, the following timer changes are recommended:
 - ◆ ACS-IR SIL Configuration
 - If POS performance is negatively affected by this change, increase by 1 second. This determines how frequently the SIL processor checks for new SIL files.



Updating RBO

- Please ensure that a back up of the databases has been performed prior to executing an update.
- When updating RBO for ISS45, the RBO StoreLine Communications must be updated. When RBO Server is installed on MFS1, the installation will automatically install or update the RBO StoreLine Communications application. If RBO Server is not installed on MFS1 (V7 only), you must install the StoreLine Communications application separately on MFS1. The setup is found on the CD under Other\RBO StoreLine Communications. Initiate the update by launching Setup.exe on the CD from the ISS45 POS Server.
- When updating RBO, if any FM Parameters include the field 72. pkg size, the parameter must be edited before using. Field 72 has been renamed pkg count and will cause the FM application to crash, requiring a restart of the FM service.
- If updating from prior to RBO 4.5.0, the **Movement Extract For Host** Back Office Task will need to be recreated.
- When updating RBO on a ScanMaster system upgraded from prior to 2.1.2 to a release equal to or later than 2.1.2, the existing Data Source for NCR ScanMaster on the RBO Server and RBO Clients must be renamed to **ScanMaster** to refer to the ScanMaster Data Source on the ScanMaster server. Additionally, a ScanMaster Data Source is required on both the RBO Server and Client. Instructions are provided in the \Other folder on the RBO Installation CD. Please refer to the folder entitled “Pervasive for ScanMaster 2.1” for instructions.
- There are several pre-defined FM Flexible Data Collect Parameters written to the system. These parameters will overwrite any existing FDC parameters with the same numbers. You will need to recreate any FM Flexible Data Collect Parameters numbered 89 – 95.
- **When updating RBO for ScanMaster, you will need to install the Retailix ScanMaster Movement application on the ScanMaster server. Please run Setup from the \Other\Retalix ScanMaster Movement folder on the RBO Installation CD.**

ISS45 V8 8.1.4.1 Security Changes

Due to changes in password management in ISS45 V8 with release 8.1.4.1, RBO has changed security functionality when implemented in this environment. This change requires that users who will sign into RBO using the FM applications (Wireless) or Retailix Navigator be added to the RBO Security database. The default Admin user continues to work properly for Navigator and can be used to add the required users. The passwords may be but are not required to be the same as the passwords on ISS45. Any user requiring access to both Wireless/Navigator and ISS45 FrontOffice will need to be added to both RBO and ISS45 FrontOffice.

What's New in 4.07.01

Item Maintenance Features

Inventory Source Item

The Inventory Source Item feature is a method of tying items sold within multiple packages to a single received source. This reduces maintenance and provides a more accurate inventory on the related items. A key example of usage is Cigarettes. While they are received in cartons, they may be sold as either cartons or packs. The carton and the packs have separate item numbers and prices but the same source cost. Using the Inventory Source Item functionality, users are able to operate as normal, but the inventory is managed properly for both the cartons and packs automatically by the End Of Day movement update process.

Ex:

Cigarettes are sold in cartons of 10 packs/carton for 21.99/carton or single packs for 2.39/pack. As the cartons are sold, each carton is decremented by 1. As the packs are sold, the Movement Update process determines whether there are enough single packs in inventory to cover the sales and if not, decrements the carton by 1 and increases the pack inventory by 10 before subtracting the movement amount. Thus, inventory on the cigarette packs are 10 – movement count. If the movement count of packs is greater than 10, enough cartons are subtracted from inventory to cover all the packs and the remainder is the current inventory on-hand for the packs.

Configuring Inventory Source Item

To configure an Inventory Source Item, call up the smaller unit (packs) in Item Maintenance and set the following fields: (on the Ordering tab in form view)

Inventory Source	
Item Number:	00006732156316
Description:	CHECKERS 100 FF BOX
Qty:	10

The Item Number field includes the UPC of the larger unit (carton). A lookup is performed to verify the item exists in the system. The Qty field includes how many of the current units are included in a source unit (10 packs in a carton).

When the Inventory Source Item Number and Qty are entered, the following occurs:

The Order Package data on the current item, including costs and adjustments, are replaced by the Order Package information from the source and re-calculated to reflect the Qty. per source. Additionally, the Receivable, Returnable and Orderable flags are disabled and set to 'N'. For example: The case cost of the source item for a case of 1 carton is 16.63 but the unit cost for the pack is 1.63 (16.63/10) to give an accurate GM% for the current item.

Since the processing occurs during the movement update process, reports and other functions that include movement and inventory data reflect the appropriate totals.

Hosting

Maintenance of the inventory source fields is not supported through hosting (either SIL or General Import) at this time. These fields will not be affected on existing items that are hosted.

File Build

These fields will be overwritten if a File Build from POS is performed.

Report Grouping

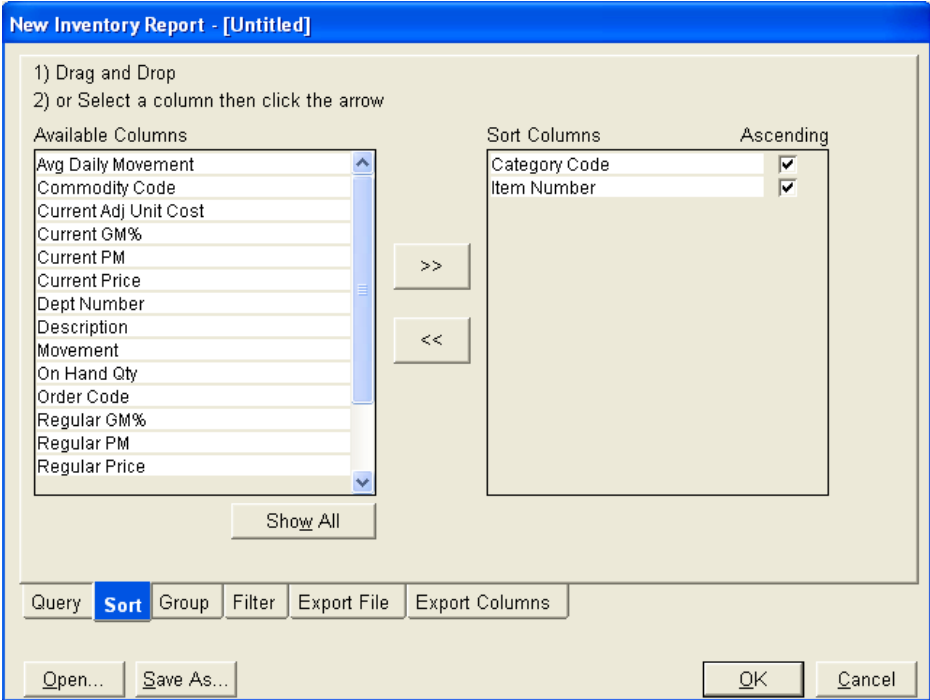
In addition to sorting reports, RBO 4.07 now includes the ability to create custom groups on all of the Item Maintenance reports. This feature addresses several areas of requested functionality:

- Combining of Item Group Code items to both give a sub-total of IGC items and to combine them for easy review
- Combination of Inventory Source items to review and report on items linked by Inventory Source
- Detailed or summary report options on all of the reports

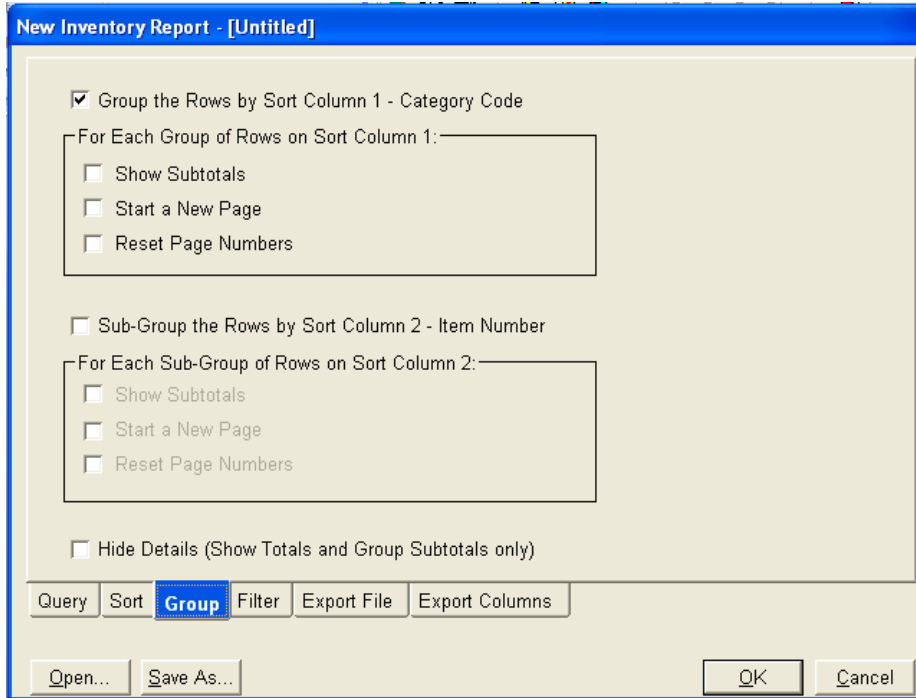
Configuring Reports for Grouping

Groups are based on the sort criteria defined for a specific report:

- 1. Define the first (and possibly second) sort criteria for the report
- 2. Based on the first and second sort criteria, establish grouping parameters



Define First and Second Sort Criteria



Set Group options

Save the report options if desired then run the report to see the following (Inventory Report shown)

Item Number	Description	Unit Size	Supplier ID	Order Code	Dept Code	Current Adj Unit Cost	Current Price	Regular Price	Current Regular GM%	Regular GM%	0
Category Code: 101 - No Description											
0000010000000	SHELL AND BOTTLE CHA	1.0000 ZZZ	00016845	000000528035	1	0	3.7000 1/	3.70 1/	3.70	0.00	0.00
0000010000001	6 1 2OZ RETURNABLE SP	1.0000 ZZZ	00016845	000000528075	1	0	1.3000 1/	1.30 1/	1.30	0.00	0.00
0000010000011	6 1 2OZ RET SHELL CHAI	1.0000 ZZZ	00016875	000000529105	1	0	1.3000 1/	1.30 1/	1.30	0.00	0.00
0000010000111	EMPTY SHELL IN CHARGE	1.0000 ZZZ	00016870	000000529085	1	0	1.3000 1/	1.30 1/	1.30	0.00	0.00
0000010000111	EMPTY SHELL OUT CRED	1.0000 ZZZ	00016870	000000529095	1	0	1.3000 1/	1.30 1/	1.30	0.00	0.00
0000111111111	EMPTY 2LTR SHELL OUT	1.0000 ZZZ	00024889	000000530835	1	0	1.6000 1/	1.60 1/	1.60	0.00	0.00
0000123456789	EMPTY SHELL OUT CRED	1.0000 ZZZ	00002635	000000529085	1	0	1.0000 1/	1.00 1/	1.00	0.00	0.00
00000500000308	EMPTY SHELL OUT CRED	1.0000 ZZZ	00001127	000000530805	1	0	1.3000 1/	1.30 1/	1.30	0.00	0.00
00000510000308	EMPTY SHELL IN CHARGE	1.0000 ZZZ	00001127	000000530815	1	0	1.3000 1/	1.30 1/	1.30	0.00	0.00
0000111111111	EMPTY 2LTR SHELL IN C	1.0000 ZZZ	00024889	000000530825	1	0	1.6000 1/	1.60 1/	1.60	0.00	0.00
0000111128000	ASK 50 OZ	1.0000 ZZZ	00081125	000000598362	1	0	4.5000 1/	0.01 1/	0.01	-100.00	-100.00
0000111813951	ENRICHED RICE	1.0000 ZZZ	00081125	000000598298	1	0	0.9000 1/	0.01 1/	0.01	-100.00	-100.00
0000111813916	SHUR FINE BLUE SOAP 3	1.0000 ZZZ	00081125	000000598343	1	0	1.1000 1/	0.01 1/	0.01	-100.00	-100.00
00001122502881	VT MACARONI AND CHEE	1.0000 ZZZ	00081125	000000598201	1	0	0.1800 1/	0.01 1/	0.01	-100.00	-100.00
00001123456789	PLASTIC SHELL IN CHA	1.0000 ZZZ	00002635	000000528795	1	0	1.6000 1/	1.60 1/	1.60	0.00	0.00
00001200000795	NESTEA GREEN TEA CTF	1.0000 ZZZ	00010852	000000598326	1	0	5.9800 1/	7.99 1/	7.99	25.16	25.16

Sample Inventory Report with Grouping

ISS45 V8 Loyalty Enhancements

If Retailx Loyalty is configured for ISS45 V8, the previous promotions are no longer applicable. RBO has been modified to:

- Read promotion information from the new loyalty tables to display information similar to the previous promotion information
- Launch the ISS45 V8 loyalty client when a user double-clicks on a promotion instead of the Simple Promotion Wizard. Users are no longer able to create new or edit existing promotions from the ISS45 client when Retailx Loyalty is configured

CVV WIC Support

RBO has implemented support for the CVV WIC flag for each of the supported POS types.

- SIL Field BA32 is used to support the field from host
- FM Field 198 is used to support the field from wireless

ScanMaster Gift Card Changes

With the latest release of ScanMaster (2.06.01) the Gift Card value changed from a simple Yes/No flag to No, EAN-128 Gift Card, UPC Gift Card. RBO has been updated to support the field as follows:

- On Screen (Form or Grid) the field is now a 3 option drop-down list with the default being N
- When importing a gift card flag via SIL, a 0 means No, 1 means EAN-128. A new SIL field –BA1037 – has been added that will support setting the Gift Card value to UPC if provided. If BA1037 is used, 0 means No, 1 means EAN-128 and 2 means UPC
- Wireless will accept N, Y or U for the field setting

Label Printing Features

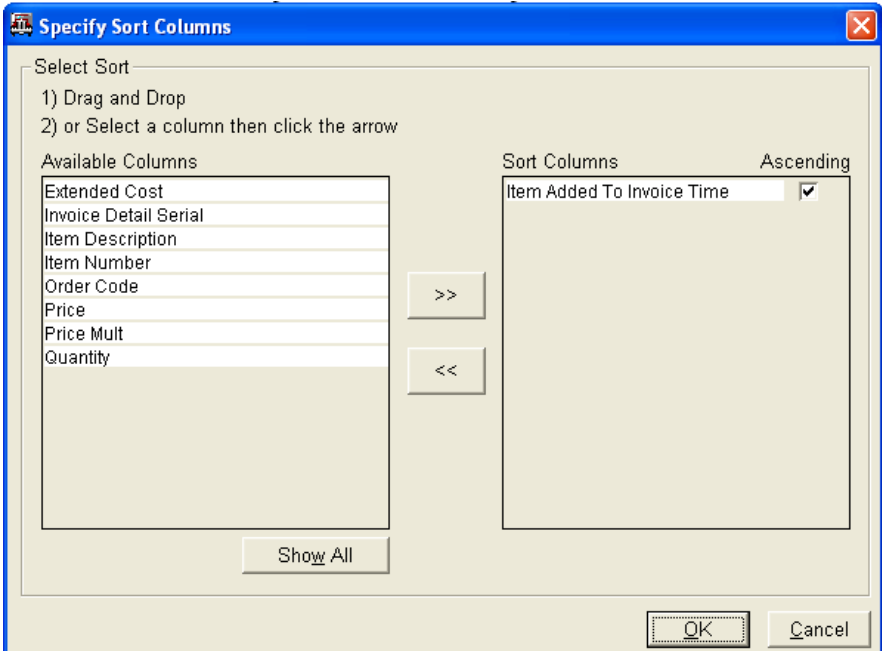
Export of Named Codes to Label Printing

The User-Defined descriptions of Named Codes – Category Code, Commodity Code, Mix and Match Code, Report Code, Miscellaneous Numeric 1 and 2, Item Group Code – are available for export to Stylus or other Label Printing applications. This will allow users to include the code and/or the description on shelf labels and signs.

Receiving Features

Sorting Invoice Reports

Added the ability to set the Invoice Report sort order to either by additional fields. This allows users to easily review the invoices to compare against the vendor's invoice by a value (description, for example) that is easier to recognize – saving hours to hunt down problem items with large invoices.



Sort options for Invoice Report

POS Release Compatibility

As RBO is enhanced, certain features require enhancements to the POS before they will work properly. The link below opens an Excel Spreadsheet that describes those features that require specific POS releases. The releases given indicate the minimum version of software to use the new feature.

[RBO Compatibility.pdf](#)

Database changes

The following changes have been made to the database between 4.5.3 and 4.6.0.

Changed Tables

The following existing tables have added fields

Table Name: *item*, *item_ref*, *item_batch*

Purpose of change: To add inventory source functionality

Column Name	Data Type	Foreign Key	Description
Inv_source_item_number	Varchar(14)		UPC of source item
Inv_source_qty	Int		Source Quantity

Table Name: *item_scanmaster*, *item_scanmaster_ref*, *item_scanmaster_batch*, *item_storeline*, *item_storeline_ref*, *item_storeline_batch*

Purpose of change: To add WIC CVV functionality

Column Name	Data Type	Foreign Key	Description
WIC_CVV_FLAG	Flag		WIC CVV

Table Name: *order_pkg*, *order_pkg_batch*

Purpose of change: To add inventory source functionality

Column Name	Data Type	Foreign Key	Description
Source_order_pkg_serial	Int		Internal key for source OP

Table Name: *order_pkg_cost*, *order_pkg_cost_batch*

Purpose of change: To add inventory source functionality

Column Name	Data Type	Foreign Key	Description
Source_order_pkg_cost_serial	Int		Internal key for source cost

Table Name: *order_pkg_adj*, *order_pkg_adj_batch*

Purpose of change: To add inventory source functionality

Column Name	Data Type	Foreign Key	Description
Source_adjust_serial	Int		Internal key for source adjustments

Table Name: user_report

Purpose of change: To add report grouping feature

Column Name	Data Type	Foreign Key	Description
Group1_on_sortcolumn1	Char(1)		Flag for grouping on group 1
Group1_subtotals	Char(1)		Flag for printing subtotals on group 1
Group1_pagebreak	Char(1)		Flag for breaking on change of group 1
Group1_reset_pagenumbers	Char(1)		Flag for resetting page numbers on group 1 change
Group2_on_sortcolumn2	Char(1)		Flag for grouping on group 2
Group2_subtotals	Char(1)		Flag for printing subtotals on group 2
Group2_pagebreak	Char(1)		Flag for breaking on change of group 2
Group2_reset_pagenumbers	Char(1)		Flag for resetting page numbers on group 2 change
Hide_details	Char(1)		Flag to set the Hide Details option

Table Name: label_info_sm, label_info_storeline

Purpose of change: To add export of Named Codes descriptions to label export

Column Name	Data Type	Foreign Key	Description
Commodity_code_desc	Varchar(30)		Commodity Code Description
Mix_match_code_desc	Varchar(30)		Mix/Match Code Description
Report_code_desc	Varchar(30)		Report Code Description

Category_code_desc	Varchar(30)		Category Code Description
Misc_int_1_desc	Varchar(30)		Miscellaneous Code 1 Description
Misc_int_2_desc	Varchar(30)		Miscellaneous Code 2 Description
Item_group_code	Int		Item Group Code
Item_group_code_desc	Varchar(30)		Item Group Code Description

Resolved Issues

Defect #	Defect Description
3478	Resolved an error returned when printing Receiving Invoice Exception Report by Invoice ID
3553	Resolved an issue where the Unit Price and Adjusted Unit Price were not viewable on a grid view
3588	Added the ability to sort the 7-day Movement history Report by Sales Track ID
3660	Added a parameter to default reports to either print to printer (default) or screen.
3701	Resolved a Power builder error modifying a query in Receiving reports
3743	Resolved a problem when exporting to ULINK with the Enable Prompt for Shelf Tag Type set to true – would not provide proper ULINK tag prompt
3765	Corrected error handling message during ScanMaster movement update
3799	Resolved an issue where an “Out of Memory” message was encountered when querying more than 25000 records. Users may set a larger buffer if desired
3811	Resolved an issue where Pocket Office batches would sometimes not show in Batch Manager
3826	Resolved an issue where changing the invoice printer at run-time was setting the default printer to the new printer and not changing it back to the previous default printer – causing subsequent reports to print on the invoice printer
3830	Updated GL Account Number size to match required size in AP Export Type III
3852	Resolved an issue where the Price Group code for ISS45 would not export in SIL Bach Export if the value was larger than 2 digits
3854	Resolved an issue where the read-only Department Discount 5 flag in Item Maintenance was not displaying the correct Department value
3857	Resolved an issue where a user received a PowerBuilder error when finalizing a department-level (as opposed to item-level) invoice.

Open Issues

When an item's scale flag status changes within a reported period, the current status is used. Any movement stored for the item with the non-current status will not be reported. For example, if a 5-week movement report is printed and within that period, the scale flag is changed on an item from Y to N then back to Y. If the current record indicates that this is a Y, then any movement for the item while the status was N will not be reported. However, if the current flag is changed to N, then movement for the item while the status with N will be reported and the movement for the item while the status is Y will not be reported.

An error will display on an ISS45 V7 system and item maintenance will close if an item is attached to more than four promotions. Until this is resolved, items should be unlinked from expired promotions before linking to new promotions.

When an item is set for an amount off per item discount on V7, an Order/Level promotion is created. If multiple items are linked to this promotion, the customer will receive the discount for the items, but when movement and sales are pulled back to RBO, the discount amount for the entire promotion is applied to the last item scanned. This is a function of the V7 POS.

When the ISS45 V7 Parameter under PLU and Item Parameters – 7. PLU follow department flags as a default – is checked, department governed flags from RBO will not apply to the POS. The recommended setting for this flag is un-checked so that all flags from RBO will transfer to the POS.

Since FM Flexible Data Collect is a data collection program only, there is no facility for checking the validity of the data provided. If the data fails to import into Inventory Management, the only indication that something is wrong will be missing data and information in the logs.

Stylus Select 2.X

Because of the upgrade of Crypkey Licensing implemented so RBO 4.7.1 is supported on Windows Vista, Windows Server 2008 and the upcoming Windows 7, Stylus Select will return licensing errors when installed on the RBO server. There is not currently a version of Stylus Select that supports this version of Crypkey. Please contact Retalix RBO Support for assistance in this configuration.

ScanMaster Open Issues

The Adjective Code table is defined and maintained on the ScanMaster server. While RBO may set an item to use an Adjective Code, the Regular Sales value is calculated against the unit price of the item when the movement is pulled. The item will show a “loss” if an item has an Adjective Code as below:

Level	Price at level
1	1/1.00
2	6/1.75
3	12/3.25
4	24/4.75

If a cashier rings up a single item, the price is \$1.00. If they ring up 24 items, the price is \$4.75, however since RBO does not maintain the Adjective Code table, the price will show a “loss” of \$19.25. The actual movement and sales will be correct, but the calculated Ad/Loss value will be wrong.

ISS45 V7 Open Issues

The ability to support the WIC CVV flag on ISS45 V7 is not supported using the current ISS45 V7 7.1.3.0-90 build. The interface for V7 was not complete or correct at the time of the .90 release and the ability for RBO to send the flags or to read the department settings is inoperable without a patch or upgrade beyond .90. This is a V7 issue that impacts RBO and the resolution has to be provided by a patch to the POS software.

ACS-IR Open Issues

RBO is expected to replace performing maintenance in the ACS-IR PLU Maintenance screens. When maintenance is transferred to ACS-IR from RBO, all supported fields are sent to keep them in sync. The Sale Start/End dates are supported and therefore sent, even if they have not been populated in RBO. The date sent for both fields is 1-1-1900. This does not present a problem ringing the items up at the register but if a user launches PLU Maintenance on the ACS-IR system and attempts to save a record that has been updated by RBO, they will receive a warning that the Sale Start/End dates are prior to the current date.

The possibility exists that some 10-digit UPC numbers with two leading zeros may not be maintainable through RBO to ACS at this time. Until this issue is resolved, when these items are discovered, you will need to create lookup numbers for these items to maintain them through RBO. In a 40000 - 60000 item file, this may affect about 3 items.

The following back office fields are **NOT** supported through the RBO to ACS-IR interface, though most of the fields do exist in RBO:

Form 3 tab:

Case Cost	Measure #	Item Reorder No
Case Pack	Package Size	Location
Gross Margin	Retail Pack	No. of Labels
Suggested Base Price	Aisle #	Long Description
Category/Sub	Shelf #	Label Format

ACS-IR Apply Process

The apply process for ACS-IR is batching process that takes advantage of the NCR SIL processor and batching mechanisms. After maintenance is created and staged, the release process uses a four-step process to apply the maintenance to the POS and RBO.

Step 1 – Preparing the items

The first step is to prepare the staged items. This process collects all POS fields and generates a SIL file for the items to be released. Once the SIL file is created, it is transferred to the ACS-IR system to the C:\TCI folder.

Step 2 – Processing the items

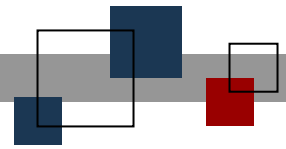
Processing takes place on the ACS-IR system and is a two-step process. To process the items, the DataPump process copies the SIL file from the C:\TCI folder to the C:\SIL\In folder and waits until the SIL process is complete. Next the DataPump executes the batch created when the SIL file was processed and waits until it is complete. RBO waits for the DataPump to indicate that the job is complete by creating the file PdpJobComplete.txt.

Step 3 – Processing errors

After the DataPump indicates that the job is complete, RBO collects error information from the appropriate error logs to determine if errors occurred while processing. These items are separated from the rest of the items during the apply process to keep the systems in sync.

Step 4 – Applying the changes

After the errors have been collected and written to the error log in RBO, the items for which no error was reported are applied to the RBO database tables and marked as applied. Those for whom errors were reported are not applied and listed in the errors section at the bottom-right pane of Release Manager.



© StoreNext Retail Technologies LLC 2010

StoreNext Retail Technologies LLC endeavors to ensure that the information in this document is correct and fairly stated but does not accept liability for any error or omission.

The development of StoreNext products and services is continuous and published information may not be up to date. It is important to check the current position with StoreNext. This document is not part of a contract or license save insofar as may be expressly agreed.