




A decorative graphic at the top of the page consisting of a horizontal grey bar with several overlapping squares in dark blue, red, and white, some with black outlines.

 *Retalix BackOffice*
 *Release Notes*
 *Version 4.8.0-050*



RBO Release Notes

Date of Issue	PIN	Part Number	Brief Description
May 2003	45001/072	89000135	Initial Release – 4.2
November 2004	45201/072	NPN	4.3 Release
March 2005	45201/072	89000206	4.4 Release
July 2005	45201/072	89000357	4.5 Release
January 2006	45201/072	89000360	4.5.1 Release
April 2006	45201/072	89000363	4.5.2 Release
April 2007	45201/072	89000367	4.5.3 Release
January 2008	45201/072	89000481	4.6.0 Release
February 2010	45201/072	89000544	4.7.1 Release
August 2011	45201/072	89000671	4.8.0 Release
September 2011	45201/072	89000671	4.8.0 Release Upd

© Copyright StoreNext Retail Technologies LLC 1995-2011
All rights reserved

This publication is protected by federal copyright law. This document and its contents are the proprietary, confidential information and property of StoreNext.. Unauthorized disclosure, reproduction, distribution or use of this document and/or its contents in any form is strictly prohibited. No part of this publication may be reproduced or transmitted into any human or computer language in any form or by any means, stored in a retrieval system, transmitted, redistributed, translated or disclosed to third parties, or de-compiled in any way including, but not limited to, photocopy, photograph, electronic, mechanical, magnetic or manual without the express written permission of StoreNext Retail Technologies LLC or its licensors, if any. This document, notwithstanding the above, may be distributed in electronic or printed form to personnel who are employed by either (1) a StoreNext customer of the subject system of this document or (2) personnel from an authorized StoreNext dealer of the subject system of this document. All copies, so distributed and/or so authorized, shall contain a full copy of this copyright notice.

StoreNext Retail Technologies LLC has prepared this manual for use by users, authorized third parties and personnel of StoreNext Retail Technologies LLC as a guide to the proper installation, operation, customization and/or maintenance of StoreNext Retail Technologies LLC equipment and software. The drawings and specifications contained herein are the property of StoreNext Retail Technologies LLC and/or its licensors.

StoreNext Retail Technologies LLC endeavors to ensure that the information in this document is correct and fairly stated but does not accept liability for any error or omission. StoreNext Retail Technologies LLC makes no representation or warranties with respect to the contents hereof, and specifically disclaims any implied warranties of merchantability or fitness for a particular purpose or non-infringement. No commitments by StoreNext or its suppliers are made from this documentation which is provided for information only.

Development of StoreNext products and documentation is continuous: StoreNext Retail Technologies LLC reserves the right to revise this publication and to make changes from time to time in the contents hereof or in the products herein described or discussed without notice and without any obligation of StoreNext Retail Technologies LLC to notify any person or organization of such revision or changes. Information published in this document will likely become obsolete over time and it is recommended that users regularly check for updates and newer versions.

The trademarks StoreNext and Retailix are registered trademarks or trademarks of Retailix; all other trademarks or registered trademarks are the property of their respective owners. Third-party products, services, or company names referenced in this document may be trademarked or copyrighted by their respective owners, and are for identification purposes only.

Copyrights, trademarks and license agreements shall be governed and construed in accordance with the laws of the State of Texas and the Federal Arbitration Act, and shall benefit Retailix, its successors, and assigns.

Address comments and corrections to:

StoreNext Retail Technologies LLC
Software Program Director
797 Commonwealth Drive
Warrendale, PA 15086

Table of Contents

Table of Contents	i
Introduction	1
New Features	3
Pricer ESL Support (with ScanMaster)	3
Sending changes to Pricer ESL	4
ScanMaster setup requirements	4
General Import Enhancements.....	5
Technical Reference Appendix	9
SQL Changes.....	9
Out of Scope	10

Introduction

This release of RBO introduces support for the Windows 7, Windows Server 2008 operating systems and the SQL Server 2008 database. The details on installing RBO on these platforms are covered in the 'RBO Installation Guide for Windows7/2008 and SQL 2008'. Earlier versions of Windows including 2000, XP, 2003, and Vista are still supported by this release.

Note:

- Due to an open defect in ISS45 with SQL Server 2008, a **Send to POS** from RBO will not complete successfully indicated by the message that it returns: "... 0 of xxx items sent". This operation, however, is just incomplete and can be finished manually within the ISS45 **Fast PLU Batch Maintenance** application. In **Fast PLU Maintenance**, the batch that **Send to POS** creates will display a status of 'Errors' but it can be executed because the items it contains all have a status of "Ready". If there are no items on the POS, this batch can be immediately executed by selecting it and choosing **Execute**. Otherwise, first set the General System Parameter **Use OPCODE #1 (New) as INSERT/UPDATE Code (Host Files)** (located in the Store \ Front Office \ PLU and Batch \ Batch Options folder) to "Yes" before executing the batch to replace the items on the POS with those within this batch.
- Due to open defects in ISS45 and RBO with SQL 2008, large batches being released to the POS will not get sent if RBO creates a Fast PLU batch to release them. To work around this issue, set the RBO system parameter: **General – FastPLUThreshold** to **200000**. This will tell RBO to use the direct, Active-X interface to the POS as it typically does with smaller batches.

Pricer ESL support for ScanMaster is also introduced in this release. When Pricer ESL is enabled in RBO and item record changes are released to the ScanMaster POS, they are automatically sent to Pricer ESL. Equivalent support for Pricer ESL from RBO to ISS45 is not supported in this release but will be a part of a future release.

General Import was enhanced to easily support the import of combined price multiple and price values such as '2/3.00' as well as being able to handle price, cost, and allowance values that have an implied decimal.

A recent RBO 4.07.01 Maintenance Update also introduced a significant new Item Maintenance feature which is formally introduced here. Form Item Maintenance allows retailers to double-click on a batch in the Other Batch list to easily open and edit another batch that an item appears in.

Due to changes in password management in ISS45 V8 with release 8.1.4.1, RBO has changed security functionality when implemented with this POS. This change requires that users who will sign into RBO using

the FM applications (Wireless) or Retailix Navigator be added to the RBO Security database.

All of these features and enhancements were made recently to the StoreNext RBO system as a result of customer requests and internal research and development. These changes are reflected in the accompanying RBO 4.08.00 software.

If you have any questions regarding this release, please contact StoreNext Support.

New Features

Pricer ESL Support (with ScanMaster)

A new RBO System Parameter introduced in this release gives the retailer the option to send item changes in RBO automatically to Pricer ESL. This includes changes made to an item in an Immediate Item Maintenance batch or through the Batch/Release process. The 'Watch File' ESL functionality that was already a part of RBO is still supported and separate from this new type of ESL support.

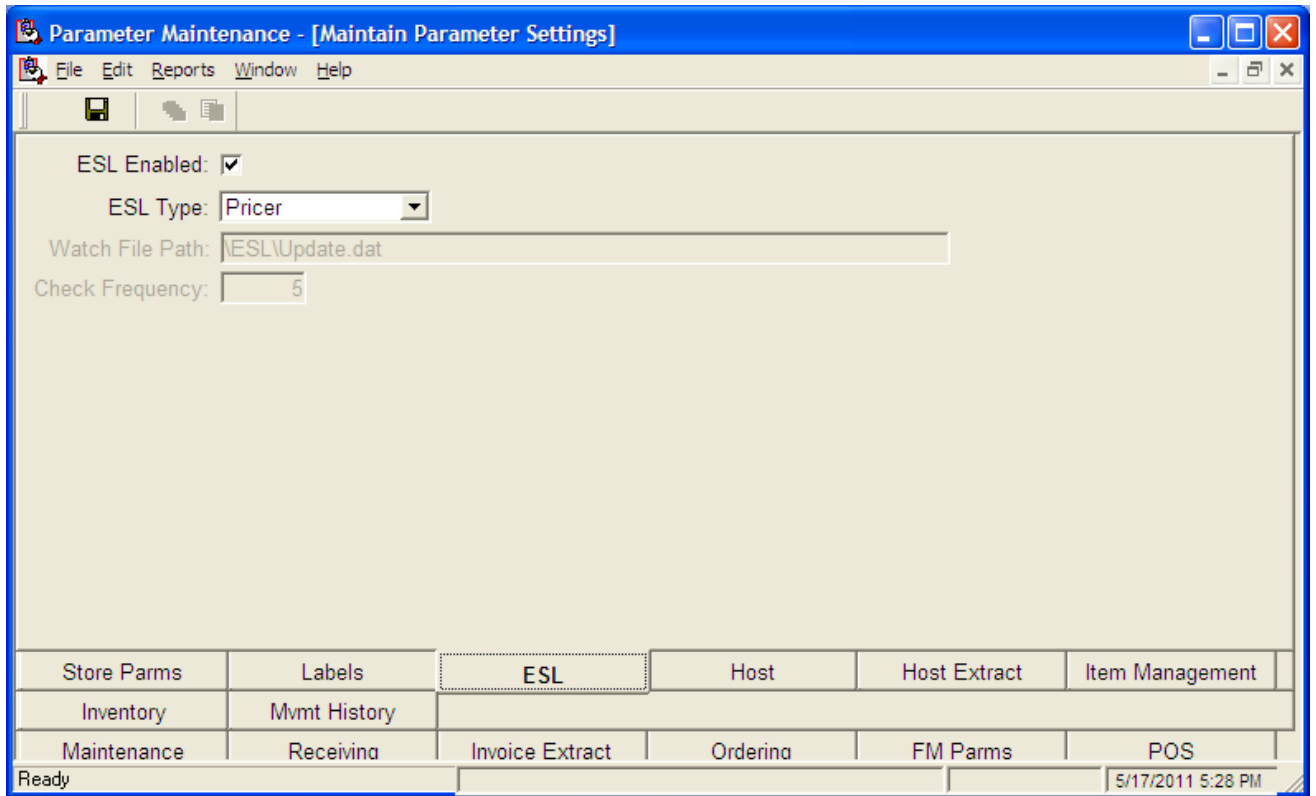
New RBO System Parameter

A new parameter: 'ESL Type' has been added to support the new ESL functionality. It is located on a new tab called: 'ESL' in the Parameter Maintenance application (shown below). 'ESL Type' must be set to 'Pricer' and the existing parameter: 'ESL Enabled' must be checked to turn on Pricer support in RBO as shown below. The default value for 'ESL Type' is 'Watch File' so retailers already using this ESL implementation are unaffected by the introduction of this new parameter.

Note:

The ScanMaster Release must be at least '2.06.01' in order for RBO to use Pricer ESL.

Parameter	Explanation
ESL Type	<p>When this parameter is set to 'Watch File' and the parameter: 'ESL Enabled' is checked, item changes will automatically be written to the RBO item_esl table to be read by a third party ESL interface.</p> <p>When this parameter is set to 'Pricer' and the parameter: 'ESL Enabled' is checked, item changes will automatically be sent to Pricer ESL.</p>



Sending changes to Pricer ESL

RBO uses the same mechanism that ScanMaster maintenance uses for getting item changes to Pricer. Specifically, RBO saves the required item data to an existing ScanMaster table: ESLChanges when an item record is released to the POS. This data is in turn picked up by a ScanMaster service responsible for sending the item price information to Pricer. If for some reason the release of an item fails in RBO, then the changes are not sent to Pricer ESL.

ScanMaster setup requirements

Pricer ESL must be enabled in ScanMaster in order for RBO to send changes to Pricer. It can be enabled in the ScanMaster System Parameters - Global/Store tab by setting 'Enable Generic ESL Interface' = 'Yes'. Further, the ScanMaster ESL service must be running.

General Import Enhancements

Importing combined Price Multiple/Price values

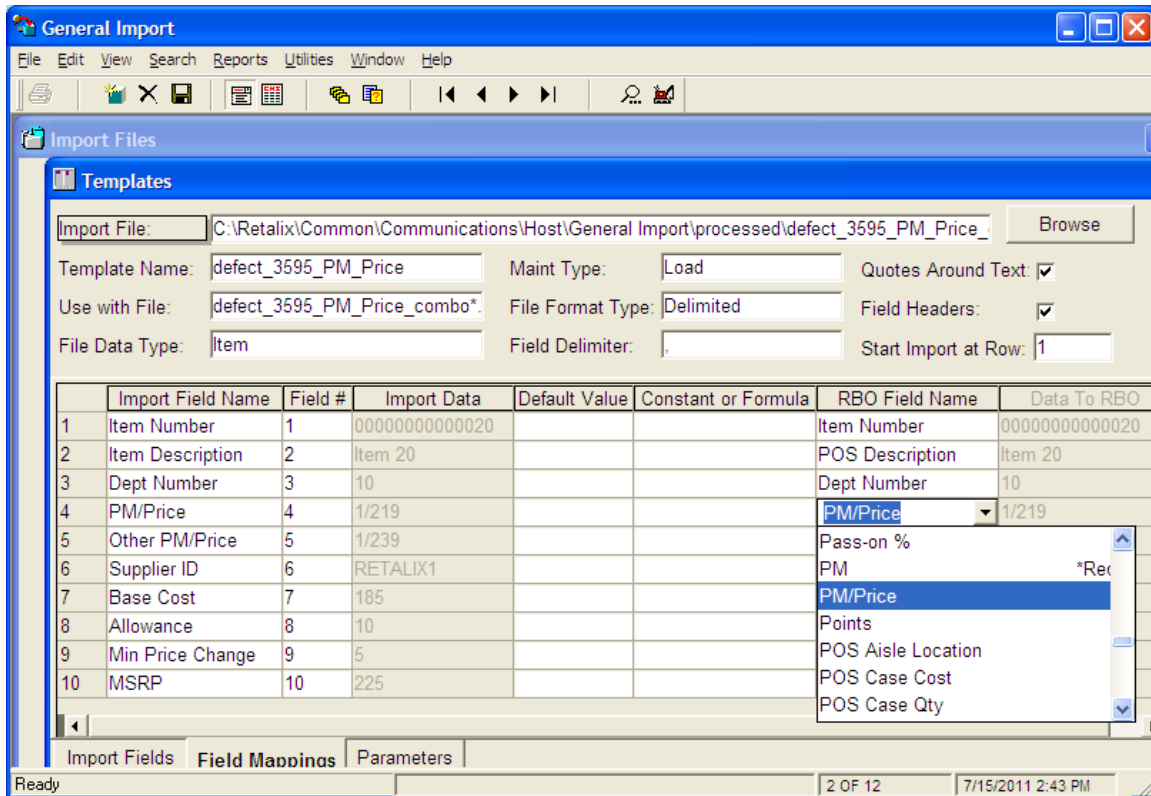
General Import was enhanced to easily support the import of combined price multiple and price values such as '2/3.00'. Previously, importing a value like this required that a formula be written in a field mapping to get the individual pieces: price multiple and price before they were mapped to the respective RBO fields. Now, they can be handled easily without a formula.

This functionality is supported by additional 'pseudo' fields (listed below). They are available in the RBO field selection list within the Import Template's – Field Mappings tab (see screenshot below). When one of these fields is defined within a field mapping, General Import automatically separates the values before and after the '/' and then maps them to corresponding RBO price multiple and price fields.

RBO 'Pseudo' field	POS Supported
Bonus Buy Pricing PM/Price	V7 and V8
Competitor PM/Price	All
Frequent Shopper PM/Price	V7 and V8
Hold PM/Price	All
PM/Price	All
Previous PM/Price	All
Sale PM/Price	All
Split PM/Price	ScanMaster (see Note)
TPR PM/Price	All

Note:

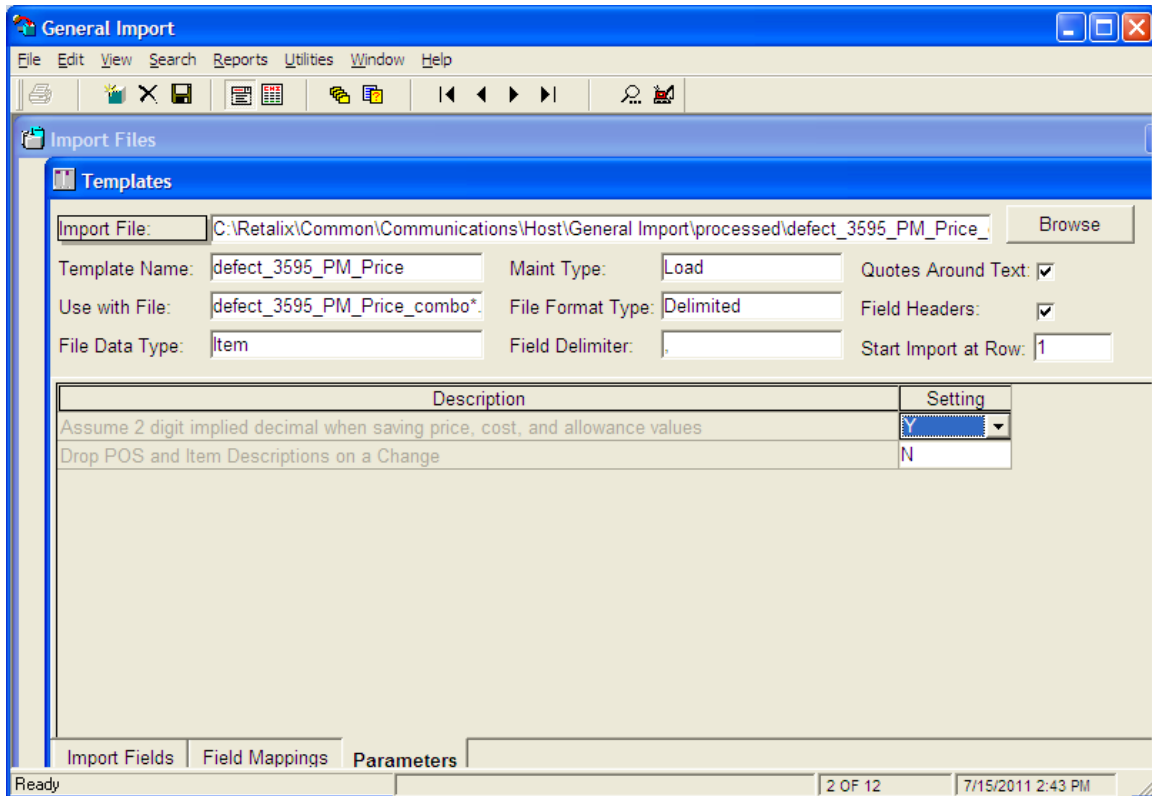
Split PM/Price provides the same functional mapping as PM/Price. But, it must be used instead of PM/Price when the ScanMaster specific field: Unit Price is being mapped.



Importing Price, Cost, and Allowance values with an Implied Decimal

General Import was enhanced to support the import of price, cost, and allowance values that have an implied decimal. Previously, importing a price value like '300' required that a formula be written to see if the value included a decimal and if not, to divide it by 100 before mapping it to an RBO field. Now, these values can be handled easily without a formula including PM/Price combo values like '2/300'.

This functionality is supported by a new Import Template parameter: 'Assume 2 digit implied decimal when saving price, cost, and allowance values' (see screenshot below). When this parameter setting is 'Yes', General Import automatically checks all price, cost, and allowance values being imported for a decimal and if one is not present, it divides the value by a 100 before mapping it to the specified RBO field.

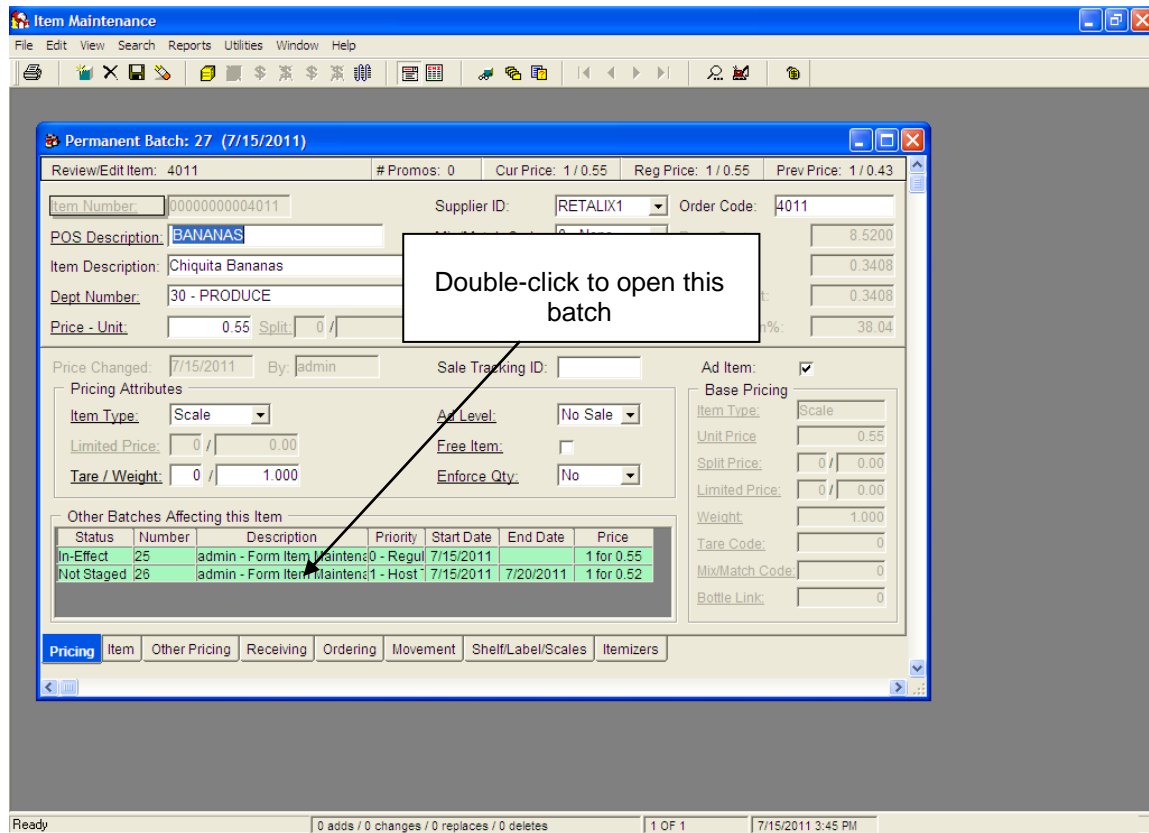


This parameter option applies to several RBO fields which are listed in the table below and to the price combo fields listed in the prior section.

All POS	ScanMaster	V7 and V8
Allowance Amt	Limited Price	Bonus Buy Price
Base Case Cost	POS Case Cost	Cost Per Case
Competitor Price	Unit Price	Freq Shopper Coupon Amt
Hold Price	Split Price	Freq Shopper Discount Amt
Min Price Change		Freq Shopper Price
MSRP		Price List1 Amt
Price		Price List2 Amt
Previous Price		
Sale Price		
TPR Price		

Opening Batches in Item Maintenance

Form Item Maintenance allows retailers to double-click on a batch in the Other Batch list to easily open and edit another batch that an item appears in. The double-clicked batch will be opened in a separate window and brought to the front in view with the original batch still open behind it. The Window menu can be used to navigate between the batches and to organize the windows that they appear in.



Security Changes with ISS45 V8

Due to changes in password management in ISS45 V8 with release 8.1.4.1, RBO has changed security functionality when implemented in this environment. This change requires that users who will sign into RBO using the FM applications (Wireless) or Retailix Navigator be added to the RBO Security database. The default Admin user continues to work properly for Navigator and can be used to add the required users. The passwords may be but are not required to be the same as the passwords on ISS45. Any user requiring access to both Wireless/Navigator and ISS45 FrontOffice will need to be added to both RBO and ISS45 FrontOffice.

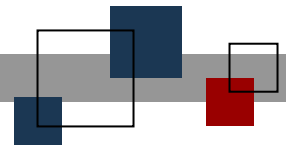
Technical Reference Appendix

SQL Changes

No new RBO tables or fields were introduced as part of this release.

Out of Scope

Price ESL support is available in the release only for ScanMaster versions 2.6.1 and above. A future release will provide support for similar functionality with ISS45.



© StoreNext Retail Technologies LLC 2011

StoreNext Retail Technologies LLC endeavors to ensure that the information in this document is correct and fairly stated but does not accept liability for any error or omission.

The development of StoreNext products and services is continuous and published information may not be up to date. It is important to check the current position with StoreNext. This document is not part of a contract or license save insofar as may be expressly agreed.