




A decorative graphic at the top of the page consisting of a horizontal grey bar with several overlapping squares in dark blue, red, and white, some with black outlines.

 *Retalix BackOffice*
 *Release Notes*
 *Version 4.8.0-060*



RBO Release Notes

Date of Issue	PIN	Part Number	Brief Description
May 2003	45001/072	89000135	Initial Release – 4.2
November 2004	45201/072	NPN	4.3 Release
March 2005	45201/072	89000206	4.4 Release
July 2005	45201/072	89000357	4.5 Release
January 2006	45201/072	89000360	4.5.1 Release
April 2006	45201/072	89000363	4.5.2 Release
April 2007	45201/072	89000367	4.5.3 Release
January 2008	45201/072	89000481	4.6.0 Release
February 2010	45201/072	89000544	4.7.1 Release
August 2011	45201/072	89000671	4.8.0 Release
September 2011	45201/072	89000671	4.8.0 Release Upd
May 2012	45201/072	89000733	4.8.0-060

**© Copyright StoreNext Retail Technologies LLC 1995-2012
All rights reserved**

This publication is protected by federal copyright law. This document and its contents are the proprietary, confidential information and property of StoreNext.. Unauthorized disclosure, reproduction, distribution or use of this document and/or its contents in any form is strictly prohibited. No part of this publication may be reproduced or transmitted into any human or computer language in any form or by any means, stored in a retrieval system, transmitted, redistributed, translated or disclosed to third parties, or de-compiled in any way including, but not limited to, photocopy, photograph, electronic, mechanical, magnetic or manual without the express written permission of StoreNext Retail Technologies LLC or its licensors, if any. This document, notwithstanding the above, may be distributed in electronic or printed form to personnel who are employed by either (1) a StoreNext customer of the subject system of this document or (2) personnel from an authorized StoreNext dealer of the subject system of this document. All copies, so distributed and/or so authorized, shall contain a full copy of this copyright notice.

StoreNext Retail Technologies LLC has prepared this manual for use by users, authorized third parties and personnel of StoreNext Retail Technologies LLC as a guide to the proper installation, operation, customization and/or maintenance of StoreNext Retail Technologies LLC equipment and software. The drawings and specifications contained herein are the property of StoreNext Retail Technologies LLC and/or its licensors.

StoreNext Retail Technologies LLC endeavors to ensure that the information in this document is correct and fairly stated but does not accept liability for any error or omission. StoreNext Retail Technologies LLC makes no representation or warranties with respect to the contents hereof, and specifically disclaims any implied warranties of merchantability or fitness for a particular purpose or non-infringement. No commitments by StoreNext or its suppliers are made from this documentation which is provided for information only.

Development of StoreNext products and documentation is continuous: StoreNext Retail Technologies LLC reserves the right to revise this publication and to make changes from time to time in the contents hereof or in the products herein described or discussed without notice and without any obligation of StoreNext Retail Technologies LLC to notify any person or organization of such revision or changes. Information published in this document will likely become obsolete over time and it is recommended that users regularly check for updates and newer versions.

The trademarks StoreNext and Retailix are registered trademarks or trademarks of Retailix; all other trademarks or registered trademarks are the property of their respective owners. Third-party products, services, or company names referenced in this document may be trademarked or copyrighted by their respective owners, and are for identification purposes only.

Copyrights, trademarks and license agreements shall be governed and construed in accordance with the laws of the State of Texas and the Federal Arbitration Act, and shall benefit Retailix, its successors, and assigns.

Address comments and corrections to:

StoreNext Retail Technologies LLC
Software Program Director
797 Commonwealth Drive
Warrendale, PA 15086

Table of Contents

Table of Contents	i
Introduction	1
303226 – ULinkPlus Extract Support	2
303232 – New Host Tab SIL Parameter	5
303233 – New SIL Order Code Trim Rules	6
306362 – New SBE Parameter Tab.....	9
306628 – SIL PRICE_DCT Table Support.....	10
306629 – RBO FM Emulator Support for the Falcon X3.....	11
Other Enhancements	12
Technical Reference Appendix	13
Out of Scope	13
Dependencies	14

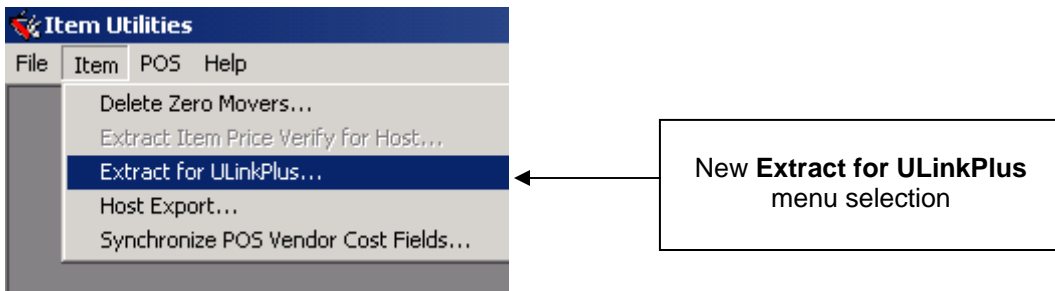
Introduction

Enhancements were recently made to the StoreNext RBO system. The changes are reflected in the accompanying RBO 4.08.00-060 software. The Change Request Document (CRD) number assigned to each enhancement is listed in the description heading.

These enhancements are explained in detail in the following pages and are also included in the latest RBO Users Guide and Help Files. If you have any questions regarding this release, please contact StoreNext Support.

303226 – ULinkPlus Extract Support

RBO now produces an item extract in support of a product offering from Unified Grocers called ULinkPlus. The new **Extract for ULinkPlus** function is found under the Item Utilities **Item** Menu.



The following fields are included in the extract file.

- Item Code
- UPC
- Item Description
- Pack
- Size
- +CRV / Deposit (Y/N)
- Information
- Case Cost
- Allowance
- TPR Price Multiple
- TPR Price
- Retail Price Multiple
- Retail Price

Note:

The alphanumeric **Information** field includes Department Number, Food Stamp flag, Tax flag and WIC flag as in the following string: **D:10 F:Y T:N W:N** where:

D = Department # up to four characters

F = Food Stamp Yes or No

T = Taxable (any tax flag is on) Yes or No

W = WIC Item Yes or No.

New Parameter

A new parameter found on the **Host Extract** Tab specifies where the ULinkPlus export file is placed:

Parameter Maintenance - [Maintain Parameter Settings]

File Edit Reports Window Help

Wholesaler Assigned Store Account Number: 00000

Extract Item Price Verify for Host

Extract Format: Disabled

Extract Path: \\V8\Retailix\$\Common\Communications\Host\Outbox

Extract Price: Regular

Generate Daily Cost Extract during Movement Pull Process

Extract Path: \\V8\Retailix\$\Common\Communications\Host\Outbox

ULinkPlus Extract Path: \\V8\Retailix\$\Common\Communications\Host\Outbox

New Parameter Location

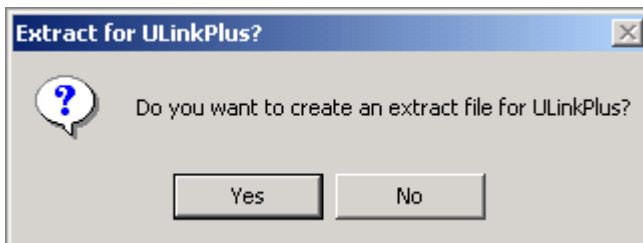
Store Parns	Labels	ESL	Host	Host Extract	SBE
Item Management	Inventory	Mvmt History			
Maintenance	Receiving	Invoice Extract	Ordering	FM Parns	POS

Host Extract Parameter Maintenance 5/2/2012 10:53 AM

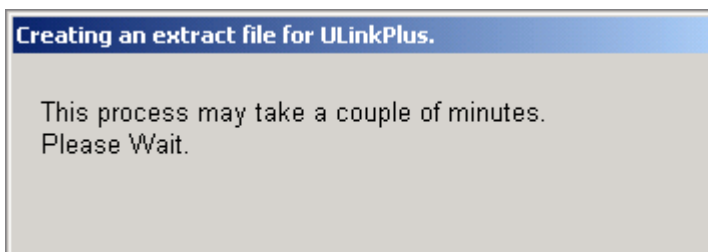
New Parameter	Explanation
ULinkPlus Extract Path	This parameter contains the path where the extract utility writes Unified Grocers ULinkPlus data. The default path is \Retailx\Common\Communications\Host\Outbox folder and the file is named "upitemfile.csv".

➤ **To run a ULinkPlus Extract:**

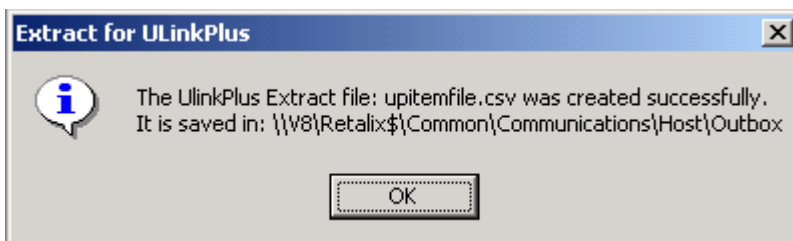
- 1 Choose **Extract for ULinkPlus** from the Item Utilities **Item** Menu. The verification message box appears:



- 2 Click **Yes** to begin the extract: The following screen displays during the extract process:



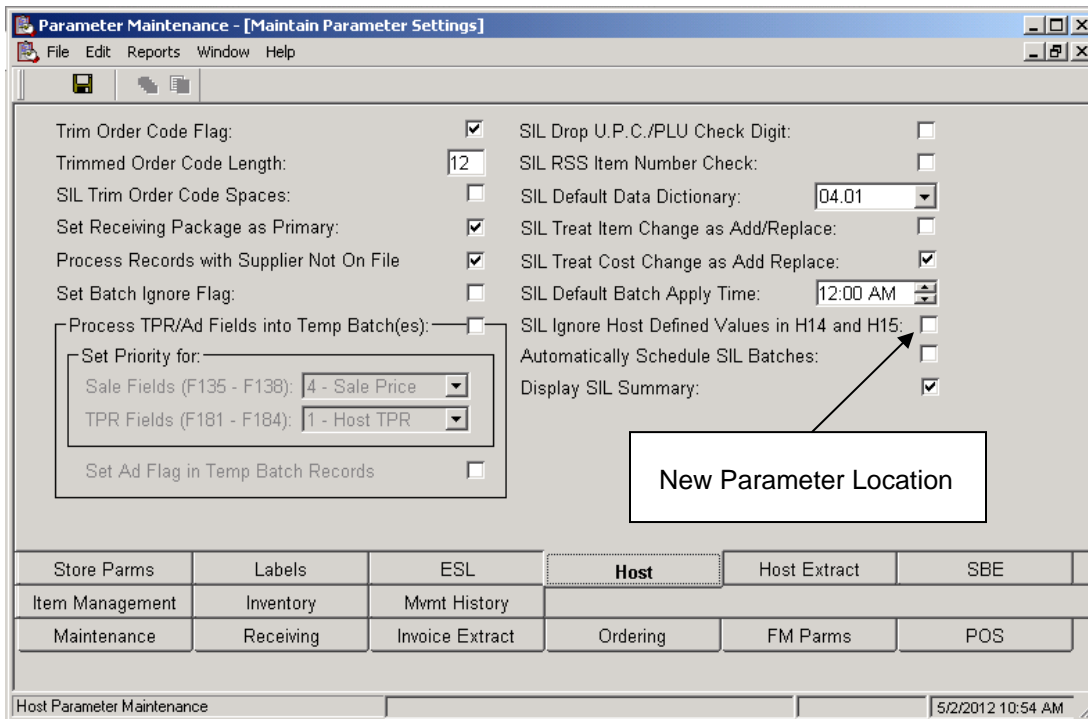
- 3 When the creation of the extract file is complete, a confirmation screen displays:



- 4 Click the **OK** button. The program creates an extract file and names the file **upitemfile.csv**. (The file is placed in the location specified by the **ULinkPlus Extract Path** parameter.)

303232 – New Host Tab SIL Parameter

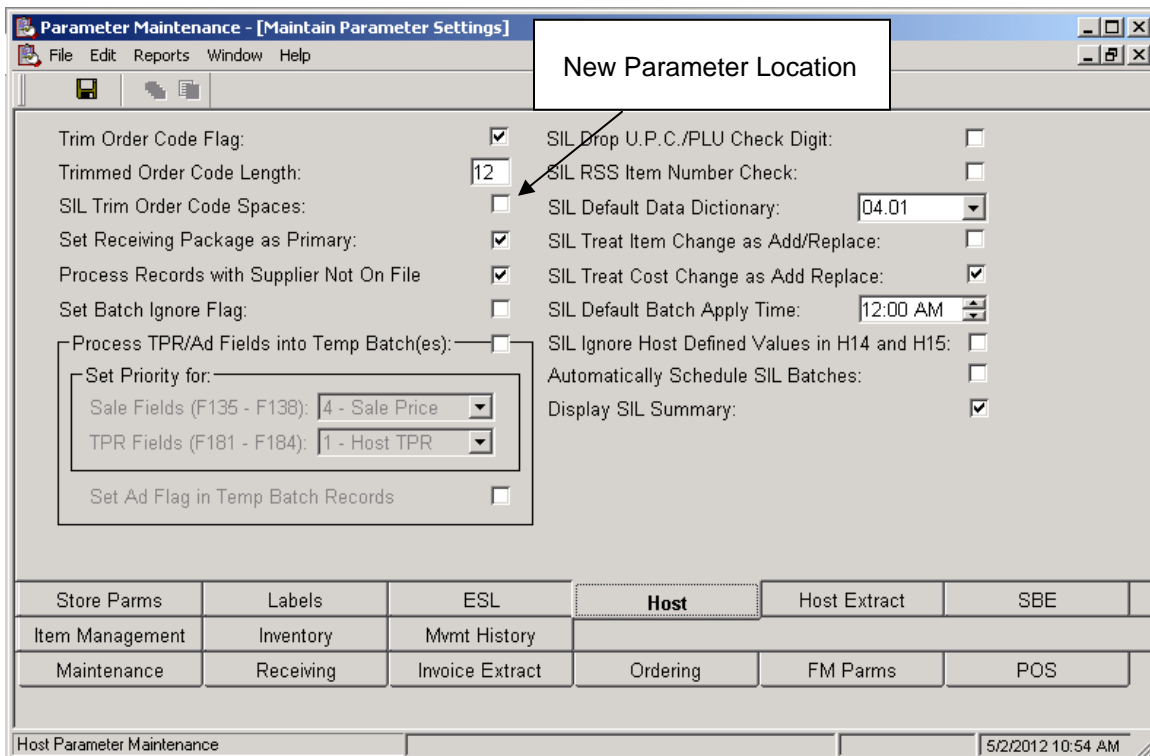
For retailers who use the SIL H14 and H15 fields for purposes other than specifying the Temporary Batch End Date and Priority (respectively), the SIL application now ignores these fields if a new parameter on the Host Tab in Parameter Maintenance is checked. This option prevents the batch from being rejected and errors being written to the summary log.



New Parameter	Explanation
SIL Ignore Host Defined Values in H14 and H15	This parameter relates to the SIL application. When the parameter is unchecked, RBO will expect the values in H14 and H15 (if provided) to be the Temp Batch End Date and Priority setting (respectively) and will generate errors if invalid. When the parameter is checked, RBO will try to interpret values in H14 and H15 (if provided) to be the Temp Batch End Date and Priority setting (respectively). If they do not contain valid values for these fields, the fields will be ignored and no errors will be logged.

303233 – New SIL Order Code Trim Rules

With the addition of a new parameter, logic surrounding the trimming of SIL Order Codes has been modified in this release. In previous releases, if the **Trim Order Code Flag** (Host Tab) was checked, the left leading characters from the Order Code field were removed by the SIL application to make the length equal to the **Trimmed Order Code Length** parameter. A warning message was written to the SIL log if significant characters (characters other than leading zeros and blanks) were removed. A new **SIL Trim Order Code Spaces** parameter (when enabled) now removes left and right justified spaces before the Order Code trim rules are applied.



New Parameter	Explanation
SIL Trim Order Code Spaces	This parameter applies to the input of the Order Code field in the SIL application. It is available only when the Trim Order Code Flag parameter is checked. Check this parameter to remove left and right justified spaces before the other trim rules are applied. The default value for this parameter is unchecked.

SIL Trim Rules

In all cases (regardless of parameter settings), RBO trims the left-most characters (if needed) to reduce the length to 12 characters (the RBO maximum) and writes a warning message to the SIL log if significant characters (non-zero and non spaces) are trimmed. Otherwise, if the **Trim Order Code Flag** is checked:

1. The left and right justified spaces are removed when the **SIL Trim Order Code Spaces** parameter is checked (New logic).
2. The left-most zero digits are trimmed (if needed) to reduce the length to the size specified in the **Trimmed Order Code Length** parameter (Existing logic).
3. A warning message is written to the SIL log if the length still exceeds the size specified in the **Trimmed Order Code Length** parameter (Existing logic).
4. The Order Code value is padded with leading zeros if the length is less than the size specified in the **Trimmed Order Code Length** parameter (Existing logic).

To coincide with these changes, the explanations of the following existing parameters have been clarified in this release:

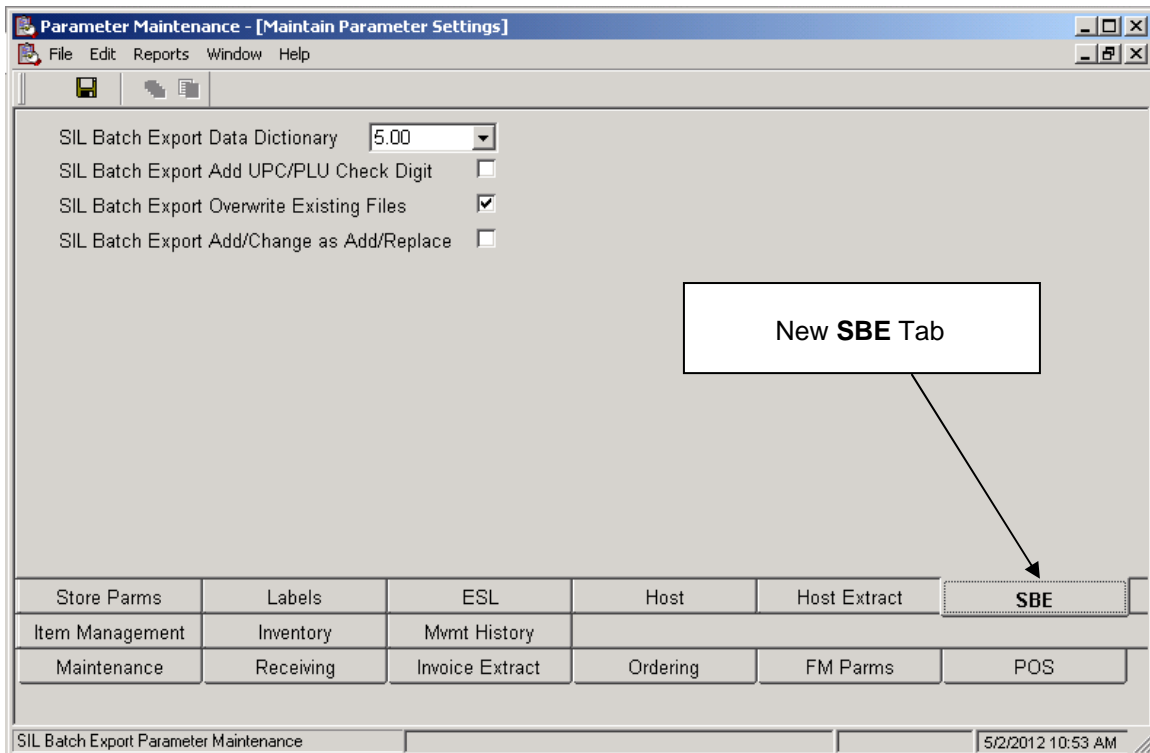
Existing Parameter	New Explanation
Trim Order Code Flag Parameter	This parameter relates to the input of the Order Code field in the SIL, General Import, and Item Maintenance applications. Check this parameter and specify a desired length in the Trimmed Order Code Length parameter in order to force

Existing Parameter	New Explanation
	<p>the values in the Order Code field to be a consistent length. The default value for this parameter is unchecked. In general (when this parameter is checked) values entered into the Order Code field will be padded with leading zeros so that their length matches the Trimmed Order Code Length parameter (if the entered length or trimmed length is smaller). <u>For SIL:</u> Values which exceed the desired length will be shortened by removing leading blanks and zeros. The parameter SIL Trim Order Code Spaces can be used in combination with this parameter to remove left and right justified spaces before the leading zeros. <u>For General Import:</u> Regardless of this parameter setting, left and right justified spaces are always trimmed from string values like the Order Code. If other trimming (such as removing leading zeroes) is required, an RBO Formula \ Filter Function can be used on the Field Mappings Tab. <u>For Item Maintenance (including FM Item Maintenance):</u> Blanks are only trimmed when the length of the value entered is smaller than the Trimmed Order Code Length parameter.</p>
Trimmed Order Code Length	<p>This parameter relates to the input of the Order Code field in the SIL, General Import and Item Maintenance applications. It is available only when the Trim Order Code Flag parameter is checked. Enter a number from 1 to 12 in order to force the values being entered into the Order Code field to this consistent length. The default value for this parameter is 12</p>

306362 – New SBE Parameter Tab

A new SBE (SIL Batch Export) Tab now appears in Parameters Maintenance (due to exceeded capacity within Host Tab). The following parameters have been moved from the Host Tab.

- SIL Batch Export Data Dictionary
- SIL Batch Export Add UPC/PLU Check Digit
- SIL Batch Export Overwrite Existing Files
- SIL Batch Export Add/Change as Add/Replace



Note:

The unused **Check Hold Price Flag** parameter has been removed from the Host Tab in this release.

306628 – SIL PRICE_DCT Table Support

The RBO SIL application now supports processing files containing PRICE_DCT data. PRICE_DCT is a SIL table defined specifically for exchanging price information and is used by wholesalers to send sale and TPR prices to the store. PRICE_DCT maintenance is processed as other SIL files containing item maintenance (i.e. ITEM_DCT, COST_DCT, ALLOW_DCT).

Note:

PRICE_DCT maintenance is processed into RBO as an Item Change (except for Deletes which are not supported). Please see ***Dependencies*** on page 14 for setup requirements.

306629 – RBO FM Emulator Support for the Falcon X3

The RBO FM Flexible Data Collect, FM Item Maintenance, FM Ordering and FM Receiving applications are now supported within the FM Emulator application on a Falcon X3 Windows Mobile device (running Windows Embedded CE).

Note:

The RBO FM Emulator application allows mobile devices communicating on a Wireless Local Area Network (WLAN) to use RBO FM Applications. For more information, please see the ***RBO FM Emulator Installation Guide for Falcon X3 CE 6.0***.

Other Enhancements

- 303231 – RBO SIL processing now allows a datatype to be declared and used as a NUMBER in a SIL file (when defined in the SIL dictionary as a CHAR).
- 314833 – The RBO MU installation has been updated to use the StoreNext numbering scheme (“-060” extension in lieu of “001”).

Technical Reference Appendix

Out of Scope

Limitations of new features in this release are listed below (and were not addressed in development).

Note:

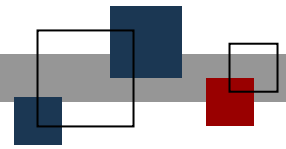
The limitations below are known as of this writing, and are provided in order to assist users and support personnel to plan, install and operate the capabilities described in this document. While StoreNext Retail Technologies LLC endeavors to ensure that this information is correct and fairly stated, no attempt is made here to catalog all limitations that could be construed or that may become known in the course of use or experience.

FSD Number	Enhancement	Out of Scope
303226	ULinkPlus Extract Support	Changes made to support the ULinkPlus Extract were made for the current release only (and will not be made to previous RBO releases).
303232	New Host Tab SIL Parameter	Changes made for the optional handling of the SIL H14 and H15 fields were made for the current release only (and will not be made to previous RBO releases).
303233	New SIL Order Code Trim Rules	Changes made for trimming the SIL Order Code field were made for the current release only (and will not be made to previous RBO releases).
306362	New SBE Parameter Tab	Changes made in moving parameters to the SBE Tab were made for the current release only (and will not be made to previous RBO releases).
306628	SIL PRICE_DCT Table Support	Changes made to support the SIL PRICE_DCT Table were made for the current release only (and will not be made to previous RBO releases).

Dependencies

Dependencies to utilize new features in this release are listed below.

FSD Number	Enhancement	Dependencies
306628	SIL PRICE_DCT Table Support	<ol style="list-style-type: none"> 1. SIL Version 7.0 or higher is required to support the PRICE_DCT table. The SIL Default Data Dictionary parameter (Host Tab) must be set to 7.00 (or above). 2. The Process TPR/Ad Fields into Temp Batch(es) parameter (Host Tab) must be checked to process SIL files with PRICE_DCT maintenance which includes Sale or TPR prices. 3. The Enable Temp Batches parameter (Item Management Tab) must be checked to process SIL files with PRICE_DCT maintenance which includes Sale or TPR prices.
306629	RBO FM Emulator Support for the Falcon X3	<ol style="list-style-type: none"> 1. The Windows Mobile Device Center or Microsoft Active Sync must be installed on the RBO Server. 2. Prior to installation, the Falcon X3 dock must be connected to the RBO Server using the Datalogic USB cable



© StoreNext Retail Technologies LLC 2012

StoreNext Retail Technologies LLC endeavors to ensure that the information in this document is correct and fairly stated but does not accept liability for any error or omission.

The development of StoreNext products and services is continuous and published information may not be up to date. It is important to check the current position with StoreNext. This document is not part of a contract or license save insofar as may be expressly agreed.