

A decorative graphic on the left side of the page, consisting of a dense cluster of various blue icons (such as a shopping cart, a person, a document, a truck, and a gear) that gradually fades out to the right.

*Retalix BackOffice*

*Release Notes*

*Version 4.8.2-070*

*(Issue 2)*

## RBO Release Notes

<b>Date of Issue</b>	<b>PIN</b>	<b>Part Number</b>	<b>Brief Description</b>
May 2003	45001/072	89000135	Initial Release – 4.2
Additional Releases: 4.3 Release; 89000206 – 4.4 Release; 89000357 – 4.5 Release; 89000360 – 4.5.1 Release; 89000363 – 4.5.2 Release; 89000367 – 4.5.3 Release			
January 2008	45201/072	89000481	4.6.0 Release
February 2010	45201/072	89000544	4.7.1 Release
August 2011	45201/072	89000671	4.8.0 Release
September 2011	45201/072	89000671	4.8.0 Release Upd
May 2012	45201/072	89000733	4.8.0-060
February 2013	45201/072	89000756	4.8.1-050
February 2014	45201/072	89000804	4.8.2-050
February 2014	45201/072	89000805	4.8.2-060
March 2014	45201/072	89000810	4.8.2-070
March 2014	45201/072	89000811	4.8.2-070 Issue 2

**© Copyright Retalix, Inc. 1995-2014**  
**All rights reserved**

This publication is protected by federal copyright law. This document and its contents are the proprietary, confidential information and property of Retalix, Inc. ("Retalix"). Unauthorized disclosure, reproduction, distribution or use of this document and/or its contents in any form is strictly prohibited. No part of this publication may be reproduced or transmitted into any human or computer language in any form or by any means, stored in a retrieval system, transmitted, redistributed, translated or disclosed to third parties, or de-compiled in any way including, but not limited to, photocopy, photograph, electronic, mechanical, magnetic or manual without the express written permission of Retalix or its licensors, if any. This document, notwithstanding the above, may be distributed in electronic or printed form to personnel who are employed by either (1) a Retalix customer of the subject system of this document or (2) personnel from an authorized Retalix Channel Partner of the subject system of this document. All copies, so distributed and/or so authorized, shall contain a full copy of this copyright notice.

Retalix has prepared this manual for use by users, authorized third parties and personnel of Retalix as a guide to the proper installation, operation, customization and/or maintenance of Retalix equipment and software. The drawings and specifications contained herein are the property of Retalix and/or its licensors.

Retalix endeavors to ensure that the information in this document is correct and fairly stated but does not accept liability for any error or omission. Retalix makes no representation or warranties with respect to the contents hereof, and specifically disclaims any implied warranties of merchantability or fitness for a particular purpose or non-infringement. No commitments by Retalix or its suppliers are made by or from this documentation which is provided for information only.

Development of Retalix products and documentation is continuous: Retalix reserves the right to revise this publication and to make changes from time to time in the contents hereof or in the products herein described or discussed without notice and without any obligation of Retalix to notify any person or organization of such revision or changes. Information published in this document will likely become obsolete over time and it is recommended that users regularly check for updates and newer versions.

The trademarks Retalix, StoreNext, ISS45, ScanMaster, R10, PocketOffice, RBO, Connected Payments, Connected Services, Connected Loyalty and all other Retalix product names are registered trademarks or trademarks of Retalix; all other trademarks or registered trademarks are the property of their respective owners. Third-party products, services, or company names referenced in this document may be trademarked or copyrighted by their respective owners, and are for identification purposes only. Copyrights, trademarks and license agreements shall be governed and construed in accordance with the laws of the State of Texas and the Federal Arbitration Act, and shall benefit Retalix, its successors, and assigns.

Address comments and corrections to:

Retalix, Inc.  
Software Program Director  
797 Commonwealth Drive  
Warrendale, PA 15086

# RBO 4.08.02-070 Release Notes

## Table of Contents

<b>Table of Contents</b> .....	<b>i</b>
<b>Introduction</b> .....	<b>1</b>
303030 – Expanded Item Maintenance “Code List” Functionality .....	2
<b>Technical Reference Appendix</b> .....	<b>6</b>
Out of Scope .....	6
Dependencies .....	7



# Introduction

An enhancement was recently made to the Retalix RBO system. The change is reflected in the accompanying RBO 4.08.02-070 software. The Change Request Document (CRD) number assigned to the enhancement is listed in the description heading.

This enhancement is explained in detail in the following pages but is not included in the latest RBO Users Guide and Help Files. Please contact Retalix Support for any questions regarding this release.

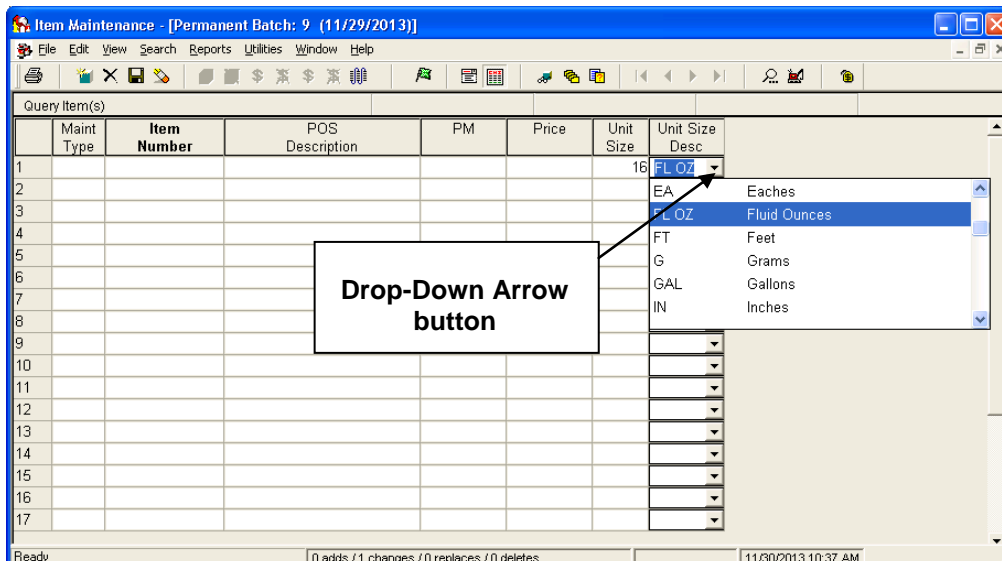
## 303030 – Expanded Item Maintenance “Code List” Functionality

“Code List” functionality has been added to several Item Maintenance character-based fields to help improve data entry consistency and aid in building queries and reports. The fields included are:

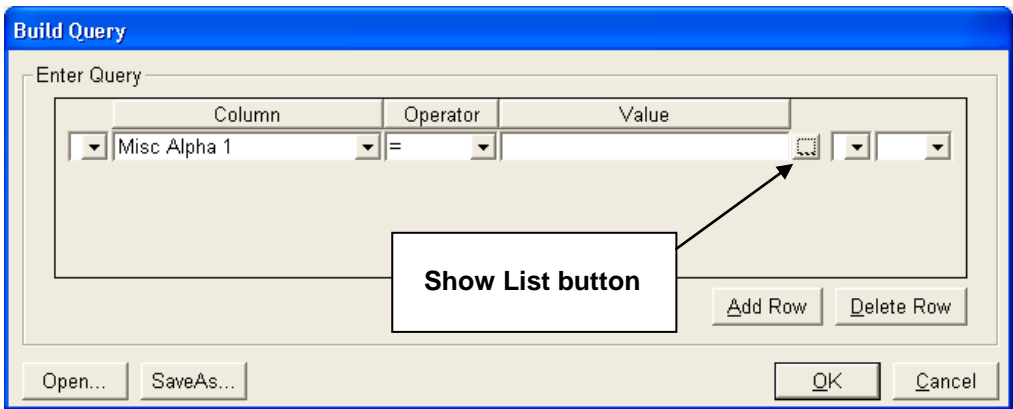
- Aisle Location
- Misc Alpha 1
- Misc Alpha 2
- Sale Track ID
- Shelf Tag Type
- Unit Size Desc

This is the same functionality currently being provided by the numeric code-based fields (Report Code, Category Code, Item Group Code, Mix Match Code, etc.) which is described in the RBO User Guide’s Item Maintenance section (under “Code Lists”). The only difference is that the fields listed above, with the exception of 'Shelf Tag Type' in RBO/ScanMaster, allow non-numeric values (or codes) to be entered.

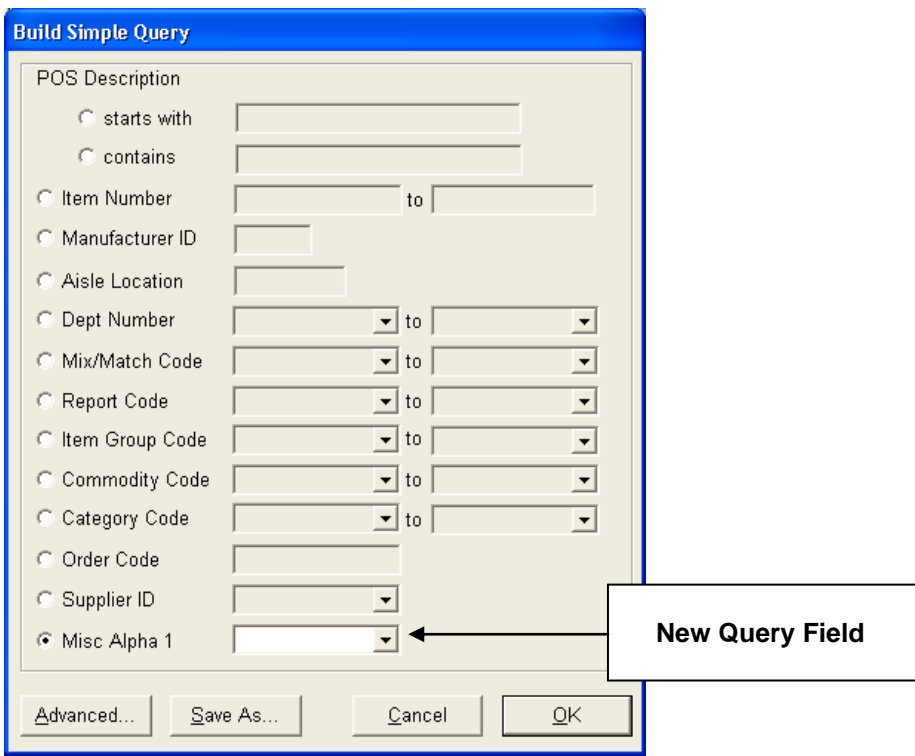
Each of these fields now have a drop-down arrow button in Item Maintenance for easily choosing or entering a value from the list (when editing an item record or performing a query).



Similarly, the list of values for these fields can be accessed in the Build Query window using the Show List button.



As part of this enhancement, the “Misc Alpha 1” field is now supported in the ‘Build Simple Query’ window. Its code list can be accessed using the drop-down arrow button on that field.



The list of values for each of these fields will initially be built from the values in the database during the Maintenance Update process. As new values are entered into the fields when performing Item Maintenance, they will be automatically added to the field’s list of values. This includes values entered on the screen, on the handheld or imported thru SIL and General Import. A default description of “No Description” will be assigned

by default, to each new list value. However, the descriptions can be easily changed in the Item Maintenance 'Edit List' window (shown below) when double-clicking on the field or choosing "Edit List" from the menu. In this window, entries can be easily added or removed from the list. In addition, items assigned to the highlighted code can be viewed by scrolling through the list at the bottom of the window.

Code	Description
EA	Eaches
FL OZ	Fluid Ounces
FT	Feet
G	Grams
GAL	Gallons
IN	Inches
LBS	Pounds
LT	Liters
ML	Milliliters
OZ	Ounces

Items with Unit Size Desc: FL OZ

Item Number	Item Long Desc
00001480015720	SUNKIST JUICE
00001480015722	MOTTS APPLE JUICE
00001480015724	MOTTS GRAPE MEDLEY

The Item Maintenance Code List Report was updated to support the new lists for the fields above. By default, this report displays all populated lists with their values and descriptions sorted by "List Name", "Numeric Code" and then "Code". The "Numeric Code" is just the "Code" or list value treated as a number and if the "Code" is not a numeric value, the "Numeric Code" assumes a value of 0. With this default sort, a Code List Report of a list containing both numeric and non-numeric values will display the non-numeric values first. When customizing this report:

- Use the "Numeric Code" field when constructing a query or filter that includes numeric operations or comparisons on the list values.
- Use the "Code" field when constructing a query or filter that includes character field operations or comparisons on the list values.

For example, the following query is the correct one for finding a numeric range of list values: 'Numeric Code' > 100 and 'Numeric Code' < 1000.

The Label Export was also updated as part of this enhancement to include the description of the list value entered for each of these fields. This is

useful when placing the value of one of these fields on a label but the value by itself is not descriptive or long enough. Instead, assign a meaningful description to each field value and put its description on the label. The 30-character descriptions appear at the end of the export record. Refer to the “Label Tag Export Format.pdf” in the \ Retalix \ BackOffice \ Documents \ Label Extract folder for details.

# Technical Reference Appendix

## Out of Scope

Limitations of new features in this release are listed below (and were not addressed in development).

**Note:**

The limitations below are known as of this writing, and are provided in order to assist users and support personnel to plan, install and operate the capabilities described in this document. While Retailx endeavors to ensure that this information is correct and fairly stated, no attempt is made here to catalog all limitations that could be construed or that may become known in the course of use or experience.

FSD Number	Enhancement	Out of Scope
303030	Expanded Item Maintenance "Code List" Functionality	Changes made to support the expanded Item Maintenance "Code List" functionality were made for the current release only (and will not be made to previous RBO releases).

## Dependencies

Dependencies to utilize new features in this release are listed below.

FSD Number	Enhancement	Dependencies
303030	Expanded Item Maintenance "Code List" Functionality	No dependencies



**© Retalix, Inc. 2014**

Retalix, Inc. endeavors to ensure that the information in this document is correct and fairly stated but does not accept liability for any error or omission.

The development of Retalix products and services is continuous and published information may not be up to date. It is important to check the current position with Retalix. This document is not part of a contract or license, save insofar as may be expressly agreed.