

A decorative graphic on the left side of the page, consisting of a dense cluster of various blue icons and shapes that gradually fades out towards the right. The icons include symbols for a shopping cart, a person, a document, a speech bubble, a gear, and various geometric shapes like triangles and rectangles.

Retalix BackOffice
Release Notes
Version 4.8.2-080

RBO Release Notes

Date of Issue	PIN	Part Number	Brief Description
May 2003	45001/072	89000135	Initial Release – 4.2
Additional Releases: 4.3 Release; 89000206 – 4.4 Release; 89000357 – 4.5 Release; 89000360 – 4.5.1 Release; 89000363 – 4.5.2 Release; 89000367 – 4.5.3 Release			
January 2008	45201/072	89000481	4.6.0 Release
February 2010	45201/072	89000544	4.7.1 Release
August 2011	45201/072	89000671	4.8.0 Release
September 2011	45201/072	89000671	4.8.0 Release Upd
May 2012	45201/072	89000733	4.8.0-060
February 2013	45201/072	89000756	4.8.1-050
February 2014	45201/072	89000804	4.8.2-050
February 2014	45201/072	89000805	4.8.2-060
March 2014	45201/072	89000810	4.8.2-070
March 2014	45201/072	89000811	4.8.2-070 Issue 2
June 2014	45201/072	89000814	4.8.2-080

**©Copyright Retalix, Inc. 1995-2014
All rights reserved**

This publication is protected by federal copyright law. This document and its contents are the proprietary, confidential information and property of Retalix, Inc. ("Retalix"). Unauthorized disclosure, reproduction, distribution or use of this document and/or its contents in any form is strictly prohibited. No part of this publication may be reproduced or transmitted into any human or computer language in any form or by any means, stored in a retrieval system, transmitted, redistributed, translated or disclosed to third parties, or de-compiled in any way including, but not limited to, photocopy, photograph, electronic, mechanical, magnetic or manual without the express written permission of Retalix or its licensors, if any. This document, notwithstanding the above, may be distributed in electronic or printed form to personnel who are employed by either (1) a Retalix customer of the subject system of this document or (2) personnel from an authorized Retalix Channel Partner of the subject system of this document. All copies, so distributed and/or so authorized, shall contain a full copy of this copyright notice.

Retalix has prepared this manual for use by users, authorized third parties and personnel of Retalix as a guide to the proper installation, operation, customization and/or maintenance of Retalix equipment and software. The drawings and specifications contained herein are the property of Retalix and/or its licensors.

Retalix endeavors to ensure that the information in this document is correct and fairly stated but does not accept liability for any error or omission. Retalix makes no representation or warranties with respect to the contents hereof, and specifically disclaims any implied warranties of merchantability or fitness for a particular purpose or non-infringement. No commitments by Retalix or its suppliers are made by or from this documentation which is provided for information only.

Development of Retalix products and documentation is continuous: Retalix reserves the right to revise this publication and to make changes from time to time in the contents hereof or in the products herein described or discussed without notice and without any obligation of Retalix to notify any person or organization of such revision or changes. Information published in this document will likely become obsolete over time and it is recommended that users regularly check for updates and newer versions.

The trademarks Retalix, StoreNext, ISS45, ScanMaster, R10, PocketOffice, RBO, Connected Payments, Connected Services, Connected Loyalty and all other Retalix product names are registered trademarks or trademarks of Retalix; all other trademarks or registered trademarks are the property of their respective owners. Third-party products, services, or company names referenced in this document may be trademarked or copyrighted by their respective owners, and are for identification purposes only. Copyrights, trademarks and license agreements shall be governed and construed in accordance with the laws of the State of Texas and the Federal Arbitration Act, and shall benefit Retalix, its successors, and assigns.

Address comments and corrections to:

Retalix, Inc.
Software Program Director
797 Commonwealth Drive
Warrendale, PA 15086

RBO 4.08.02-080 Release Notes

Table of Contents

Table of Contents	i
Introduction	1
394905 – General Import Warning Files	2
Technical Reference Appendix	5
Out of Scope	5
Dependencies	6

Introduction

An enhancement was recently made to the Retalix RBO system. The change is reflected in the accompanying RBO 4.08.02-080 software. The Change Request Document (CRD) number assigned to the enhancement is listed in the description heading.

This enhancement is explained in detail in the following pages but is not included in the latest RBO Users Guide and Help Files. Please contact Retalix Support for any questions regarding this release.

394905 – General Import Warning Files

General Import has been enhanced to generate a Warning file when import values have been automatically truncated because they are too large for the mapped RBO field. This new functionality applies to all character-based RBO fields including the following:

- Aisle Location
- Competitor Description
- Item Description
- Misc Alpha 1
- Misc Alpha 2
- Misc Alpha 3
- Order Code
- POS Description
- Sale Track ID
- Unit Size Desc

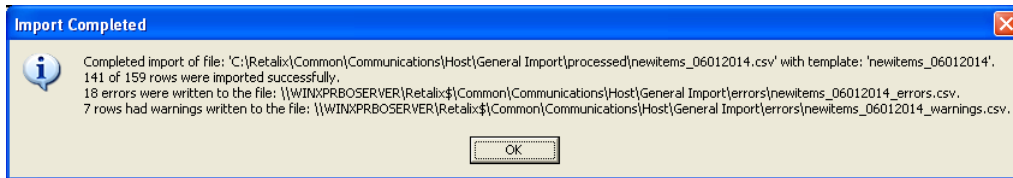
It also includes these POS specific fields in RBO/V8:

- Bonus Buy Pricing Description
- Vendor Number
- Item Size

And it includes these fields in RBO/ScanMaster:

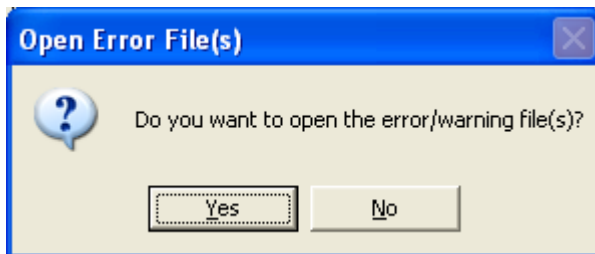
- Promo ID
- POS Supplier ID
- POS Order Code
- POS Unit Size Desc

The results message box displayed by General Import at the end of the import process has been enhanced to additionally include the number of warnings that have been raised, if any, along with the name and location of the generated warning file as shown below.



It is important to note that errors are reported separately and saved to a different file than warnings because no action is required to address the warnings. The messages in the generated warnings file describe what field(s) values were automatically truncated to allow the data row that includes those values to be successfully imported into RBO. Conversely, errors, describe the issue(s) that are preventing data row(s) from being imported and do require corrective action in order to successfully import that data.

The option prompt that is raised after the results message box to open the errors file has been changed to additionally open the warnings file if one has been generated as shown below. By choosing “Yes” in this prompt, all of the error and warning files will be opened separately in Notepad.

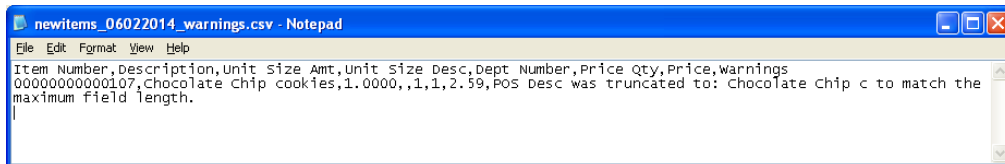


If you choose to open these files manually, both file types can be found in the Retalix\Common\Communications\Host\General Import\Error folder. The error *and warning files* have the same name as the processed file with the string: “_errors” or “_warnings” appended just before the file extension.

The generated warning file will be in the same format as the import file containing all of the same fields, in the same order and delimited the same way. It will contain only the data that generated a warning with an additional field for the warning message that is appended after all the other fields.

The following example is a warning file generated from the import of the file: “newitems_06022014.csv”. It contains the header of the import file

with the additional field: “Warnings” on the end, and the data row that raised the warning with the warning message in the last field. In this example, the value in the Description field of the import file is mapped to the RBO field: “POS Desc” which has a maximum length of 16 characters in RBO/ScanMaster. So, this value is automatically truncated to match the maximum field length requirement as stated by the message in the “Warnings” field.



```
newitems_06022014_warnings.csv - Notepad
File Edit Format View Help
Item Number,Description,Unit Size,Amt,Unit Size Desc,Dept Number,Price Qty,Price,warnings
0000000000107,Chocolate chip cookies,1.0000,,1,1,2.59,POS Desc was truncated to: Chocolate chip c to match the
maximum field length.
```

If the warning indicates that a value was automatically truncated and you want it imported differently, you can add a formula to the import template to shorten it differently so that it will be accepted by RBO or you can change the data in either the import file or warning file.

Depending on the number of warnings and the actions required to address them, you can choose to correct the data that caused the warnings directly in the warning file and then import that file using the same import template. Refer to the procedure on “Importing Error Files” in the RBO User’s Guide for details because it now also applies to warning files too. This approach is the easiest and will take less processing time if the warning file is smaller than the original import file. In either approach, if a batch is being generated by the import, it will be a different batch than the one created by the original import file.

Technical Reference Appendix

Out of Scope

Limitations of new features in this release are listed below (and were not addressed in development).

Note:

The limitations below are known as of this writing, and are provided in order to assist users and support personnel to plan, install and operate the capabilities described in this document. While Retalix endeavors to ensure that this information is correct and fairly stated, no attempt is made here to catalog all limitations that could be construed or that may become known in the course of use or experience.

FSD Number	Enhancement	Out of Scope
394905	General Import Warning Files	Changes made to support Warning Files in General Import were made for the current release only (and will not be made to previous RBO releases).

Dependencies

Dependencies to utilize new features in this release are listed below.

FSD Number	Enhancement	Dependencies
394905	General Import Warning Files	No dependencies



© Retalix, Inc. 2014

Retalix, Inc. endeavors to ensure that the information in this document is correct and fairly stated but does not accept liability for any error or omission.

The development of Retalix products and services is continuous and published information may not be up to date. It is important to check the current position with Retalix. This document is not part of a contract or license, save insofar as may be expressly agreed.