

A decorative graphic on the left side of the page, consisting of a dense cluster of various blue icons and shapes that gradually fades out to the right. The icons include symbols for a shopping cart, a person, a document, a speech bubble, a gear, and various geometric shapes like triangles and squares.

*Retalix BackOffice*  
*Release Notes*  
*Version 4.8.2-090*

## RBO Release Notes

<u>Date of Issue</u>	<u>PIN</u>	<u>Part Number</u>	<u>Brief Description</u>
May 2003	45001/072	89000135	Initial Release – 4.2
Additional Releases: 4.3 Release; 89000206 – 4.4 Release; 89000357 – 4.5 Release; 89000360 – 4.5.1 Release; 89000363 – 4.5.2 Release; 89000367 – 4.5.3 Release			
January 2008	45201/072	89000481	4.6.0 Release
February 2010	45201/072	89000544	4.7.1 Release
August 2011	45201/072	89000671	4.8.0 Release
September 2011	45201/072	89000671	4.8.0 Release Upd
May 2012	45201/072	89000733	4.8.0-060
February 2013	45201/072	89000756	4.8.1-050
February 2014	45201/072	89000804	4.8.2-050
February 2014	45201/072	89000805	4.8.2-060
March 2014	45201/072	89000810	4.8.2-070
March 2014	45201/072	89000811	4.8.2-070 Issue 2
June 2014	45201/072	89000814	4.8.2-080
June 2014	45201/072	89000817	4.8.2-090

© Copyright Retalix, Inc. 1995-2014  
All rights reserved

This publication is protected by federal copyright law. This document and its contents are the proprietary, confidential information and property of Retalix, Inc. ("Retalix"). Unauthorized disclosure, reproduction, distribution or use of this document and/or its contents in any form is strictly prohibited. No part of this publication may be reproduced or transmitted into any human or computer language in any form or by any means, stored in a retrieval system, transmitted, redistributed, translated or disclosed to third parties, or de-compiled in any way including, but not limited to, photocopy, photograph, electronic, mechanical, magnetic or manual without the express written permission of Retalix or its licensors, if any. This document, notwithstanding the above, may be distributed in electronic or printed form to personnel who are employed by either (1) a Retalix customer of the subject system of this document or (2) personnel from an authorized Retalix Channel Partner of the subject system of this document. All copies, so distributed and/or so authorized, shall contain a full copy of this copyright notice.

Retalix has prepared this manual for use by users, authorized third parties and personnel of Retalix as a guide to the proper installation, operation, customization and/or maintenance of Retalix equipment and software. The drawings and specifications contained herein are the property of Retalix and/or its licensors.

Retalix endeavors to ensure that the information in this document is correct and fairly stated but does not accept liability for any error or omission. Retalix makes no representation or warranties with respect to the contents hereof, and specifically disclaims any implied warranties of merchantability or fitness for a particular purpose or non-infringement. No commitments by Retalix or its suppliers are made by or from this documentation which is provided for information only.

Development of Retalix products and documentation is continuous: Retalix reserves the right to revise this publication and to make changes from time to time in the contents hereof or in the products herein described or discussed without notice and without any obligation of Retalix to notify any person or organization of such revision or changes. Information published in this document will likely become obsolete over time and it is recommended that users regularly check for updates and newer versions.

The trademarks Retalix, StoreNext, ISS45, ScanMaster, R10, PocketOffice, RBO, Connected Payments, Connected Services, Connected Loyalty and all other Retalix product names are registered trademarks or trademarks of Retalix; all other trademarks or registered trademarks are the property of their respective owners. Third-party products, services, or company names referenced in this document may be trademarked or copyrighted by their respective owners, and are for identification purposes only. Copyrights, trademarks and license agreements shall be governed and construed in accordance with the laws of the State of Texas and the Federal Arbitration Act, and shall benefit Retalix, its successors, and assigns.

Address comments and corrections to:

Retalix, Inc.  
Software Program Director  
797 Commonwealth Drive  
Warrendale, PA 15086

# RBO 4.08.02-090 Release Notes

## Table of Contents

Table of Contents.....	i
<b>Introduction.....</b>	<b>1</b>
303025 – New Batch Logging .....	2
399301 – Invoice Ticket Barcode .....	8
420224 – Condensed Header on Landscape Invoice Ticket Report .....	11
<b>Technical Reference Appendix.....</b>	<b>12</b>
Out of Scope .....	12
Dependencies .....	13



# Introduction

Enhancements were recently made to the Retalix RBO system. These changes are reflected in the accompanying RBO 4.08.02-090 software. The Change Request Document (CRD) number assigned to each enhancement is listed in the description heading.

These enhancements are explained in detail in the following pages but are not included in the latest RBO Users Guide and Help Files. Please contact Retalix Support for any questions regarding this release.

## 303025 – New Batch Logging

RBO has been enhanced to log actions that create or affect a batch at the batch level. This logging will provide a historical view of every batch that is entered into RBO including when it was created, opened, closed, staged, released, and deleted and who performed these actions. Changes to batch properties such as Start and End Date, Description, Priority, etc. are included in the logged batch history. This new logging does not include the recording of item-level details such as which item records and fields were changed in a batch or which items were released in the Release Manager. This capability goes beyond the scope of this enhancement.

Batch logging will be written to a batchlog.csv file located in the **\\Retalix\Common\SystemApplications** directory. A new log file will be generated each month and will be uniquely named with the current 4-digit year and 2-digit month in the format: **batchlog-yyyy-mm.csv**. Log files from prior months will remain in this directory unless they are manually deleted so that older batch history is maintained.

Each batchlog file is a .csv (comma delimited) formatted file which will allow it to be easily opened in Excel or imported into a database. The following fields are contained in this file to capture each batch action, who performed the action, when it was performed and the batch properties in effect when it was performed. The field names appear in the first line of this file.

Field Name	Description
Date and Time of Action	The date and time of when the batch action was performed
RBO User	The RBO user name of the person that performed the batch action
Action	The action performed on the batch. In many cases, both the start and completion of an action are recorded as two separate entries in the log file as described in detail below
Batch ID	The batch number that identifies the batch
Serial	An internal sequence number that identifies the batch (not displayed in Batch Manager).
Batch Type	The type of batch: "Immediate", "Permanent", or "Temporary"
Start Date	The start date of the batch

Field Name	Description
End Date	The end date of the batch if the Batch Type is "Temporary"
Apply Time	The time (on the Start Date) when the batch is to be automatically staged and released to the POS when the Scheduled flag is "Y"
Scheduled	A flag that indicates whether the batch is to be automatically staged and released at a specific time (as specified by the Start Date and Apply Time). The value is "Y" for scheduled or "N" for not scheduled
Description	The description of the batch
Created Using	The short name for the application that created the batch
Ignore Batch	A flag that indicates whether the batch and all of its records should be ignored when a Stage is performed. The value is "Y" for ignored or "N" for not ignored
Auto Delete	A flag that indicates whether the batch will be automatically purged from the system after it has expired or been applied and has exceeded the number of days specified in the Batch Options screen. The value is "Y" for auto-delete or "N" for do not auto-delete
Auto Release	A flag that indicates whether to automatically release a batch to the POS after it is staged. The value is "Y" for auto-release or "N" for do not auto-release
Priority	The priority level of the batch if the Batch Type is "Temporary"
Records	The number of records in the batch
Created By	The RBO user that created the batch
Creation Date Time	The date and time that the batch was created
Changed By	The RBO user that last updated the batch
Changed Date Time	The date and time that the batch was updated

Many of the actions that are recorded in a batchlog file are done in pairs to mark the beginning and end of an action performed on a batch. For example, when a batch is staged, a line is written to the log file with "Staging Batch" in the Action field indicating the start of the action. When the staging process has completed, another line is written to the log file with "Staged Batch" in the Action field to indicate completion. Similarly, batches can be created or opened and then after maintenance has been entered, the batch is closed. So, there are corresponding actions: "Created Batch" or "Opened Batch", and "Closed Batch" that will be recorded when these events occur. In cases, where a batch is created and no maintenance is entered, the two actions recorded in the log will be:

"Created Batch" and "Deleted Batch" because RBO does not keep empty batches in the system.

The following tables list the actions that will be logged with this new functionality. All Item Maintenance applications including screen and FM Item Maintenance, SIL, General Import, and Item Utilities that create a batch will have actions recorded in the batchlog file when a batch is created, opened, or closed as listed in the table below. No logging occurs when a batch is opened in Read-Only mode because the batch is not being changed in any way.

#### Logged Actions in all Item Maintenance applications

Action Performed	Logged Action(s)
New Batch	Created Batch
Open/Edit Batch	Opened Batch
Close Batch	Closed Batch
	<p><b>NOTE:</b></p> <p>"Deleted Batch" is recorded instead of "Closed Batch" if no maintenance is saved to the batch.</p>

The following table lists the actions that can be performed in the Batch Manager which are logged by this new functionality. Each of these are logged by separate entries to mark the start and end of the action performed. The Batch Manager actions that are not logged and listed here include: "Export to SIL", "Report", "Generate Tags", and "Undelete" because they do not affect a batch in any way.

#### Logged Actions in the Batch Manager

Action Performed	Logged Action(s)
Delete Marked Batches	Deleting Marked Batches Deleted Batch (for each batch being deleted) Deleted Marked Batches
Permanently Delete (from Recycle Bin)	Deleting Batch Deleted Batch
Purge	Purging Old Batches Deleted Batch (for each batch being purged) Purged Old Batches
Save (changed batch field)	Updating Batch Properties Updated Batch Properties
Make Permanent /	Updating Batch Properties

Action Performed	Logged Action(s)
Make Temporary	Updated Batch Properties
Unlock Batch	Unlocking Batch Closed Batch  <b>NOTE:</b> "Deleted Batch" is recorded instead of "Closed Batch" if no maintenance is saved to the batch.
Copy Batch	Copying Batch Copied Batch
Stage Batch	Staging Batch Staged Batch  <b>NOTE:</b> Stage Batch automatically calls "Purge" so Purge logging will also be recorded.
Full Stage	Running Full Stage Completed Full Stage  <b>NOTE:</b> Full Stage automatically calls "Purge" so Purge logging will also be recorded.
Release Batch	Releasing Batch Released Batch
Release Batch (When item batch count is greater than the FastPLUThreshold General System Parameter. Applies to ISS45 V8/StoreLine only)	Fast Releasing Batch Completed Fast Releasing Batch  <b>NOTE:</b> "Stopped Fast Releasing Batch" is recorded instead of "Completed Fast Releasing Batch" if the file created for Fast PLU Batch is rejected by ISS45 V8 /StoreLine.
Release Return To Regular	Releasing RTR Batch Released RTR Batch
Release Return To Regular (When item batch count is greater than the FastPLUThreshold General System Parameter. Applies to ISS45 V8/StoreLine only)	Fast Releasing RTR Batch Completed Fast Releasing RTR Batch or  <b>NOTE:</b> "Stopped Fast Releasing RTR Batch" is recorded instead of "Completed Fast Releasing RTR Batch" if the file created for Fast PLU Batch is rejected by ISS45 V8 /StoreLine.

For SIL and General Import, multiple batches may be created when processing a file so there will be a corresponding entry recorded in the

batchlog for each batch that is created and closed. In some cases, these applications will re-open a batch that they previously created and closed while processing a file which will also generate corresponding entries in the batchlog. This occurs in SIL processing for example when there is an ITEM\_DCT and a COST\_DCT section in the file that have the same batch number in each section header. In this case, the SIL process will close the batch that it created for the ITEM\_DCT section, re-open it when it begins processing the COST\_DCT section, and then close it again when that section is completed.

When processing a SIL file with the Auto-Apply header field set, a "Scheduling Batch for Auto-Apply" entry will be recorded in the batchlog for each batch that will be automatically applied by the SIL process. This logging occurs after the SIL file has been completely processed with batch(es) created in RBO and before the stage and release process is invoked to do the auto-apply. The table below shows the actions that are logged when processing a file.


**Logged Actions in Host applications:**

Action Performed	Logged Action(s)
Process file	Created Batch Closed Batch  <b>NOTES:</b> Multiple entries of these actions are logged when multiple batches are affected. "Opened Batch" is recorded instead of "Created Batch" when a batch created during the process is re-opened. "Deleted Batch" is recorded instead of "Closed Batch" if no maintenance is saved to the batch.
Process SIL file with Auto-Apply on	Created Batch Closed Batch Scheduling Batch for Auto-Apply Staging Batch Staged Batch Releasing Batch Released Batch  <b>NOTES:</b> Multiple entries of these actions are logged when multiple batches are affected.

Action Performed	Logged Action(s)
	<p>“Opened Batch” is recorded instead of “Created Batch” when a batch created during the process is re-opened.</p> <p>“Deleted Batch” is recorded instead of “Closed Batch” if no maintenance is saved to the batch.</p>

## 399301 – Invoice Ticket Barcode

RBO has been enhanced to display a barcode in the header area of the Invoice Ticket report to uniquely identify the invoice. The barcode will serve as a “lookup” mechanism for storing and retrieving this report in an electronic format. It will be generated automatically from the contents of the invoice and displayed in this report when the invoice has been “Conditionally Accepted” or “Finalized”, the new Receiving parameter: Print Invoice Barcode is enabled, and the Code 128 font is installed. This new functionality applies to the Landscape and Portrait versions of the Invoice Ticket report for Item Receiving. Department Receiving was not changed to include this functionality.

12/8/2014 14:45:19		RBO Store		Store Number: 11	
Page 1 of 1		Invoice Ticket		 <small>0001085200000000001861182300051487</small>	
Invoice #:	18613023	Supplier Category:		Supplier ID:	00010852
Store #:	11	Supplier Desc:	DSD Vendor 10852	Supplier Address:	482 Retail Blvd
Store:	RBO Store				Suite 111
Address:	482 Market St				Dayton, OH 45222
	Dayton, OH 45242				

The generated barcode is an encoded representation of a 38 digit numeric code automatically constructed from the Supplier ID, Invoice #, and Total Cost field values on the accepted invoice. Each of these field values is formatted and stored in a specific location in the 38 digit code. For example, the barcode shown above was generated for an invoice with Supplier ID: 00010852 (digits 1-8), Invoice ID: 18613023 (digits 9-30), and Total Cost: \$534.07 (digits 31-38). The table and notes below provide the details of how each of these fields is used in the construction of this 38 digit code using these example values.

Digits	Example Value	Description
1-8	00010852	Supplier ID
9-30	0000000000000018613023	Invoice #
31	0	Indicator for positive or negative Total Cost
32-38	0053407	Total Cost

### Notes:

- Supplier ID must be numeric for a barcode to be generated

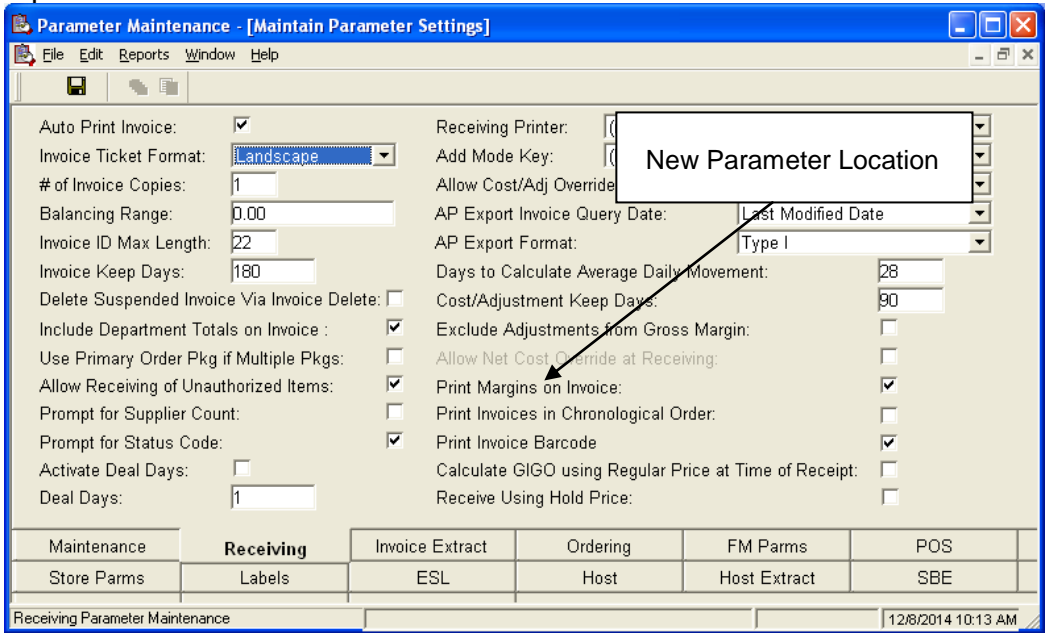
- The indicator for a positive (debit) Total Cost value is “0” and “1” for a negative (credit) value.
- The amount used for the Invoice Total Cost is the lesser (leftmost on the number line) of the two invoice values: Supplier’s Total Cost and the calculated Invoice Total Cost. The amount has an implied decimal.

This enhancement requires that the **Code 128 font, version 1.2** be installed on the RBO Server system and any RBO Client systems that will be printing the Invoice Ticket report with the barcode displayed. This is a free font that can be downloaded from the following link or requested from RBO Support. This specific font and version must be used because the RBO function that encodes the 38 digit numeric code is designed and tested to work with it.

<http://www.jtbarton.com/Barcodes/Code128.aspx>

To install the font, copy the downloaded **code128.ttf** file into the **c:\windows\fonts** directory and then reboot. The reboot is required for the RBO FM Receiving service to recognize that the font is installed when auto-printing accepted invoices from the handheld.

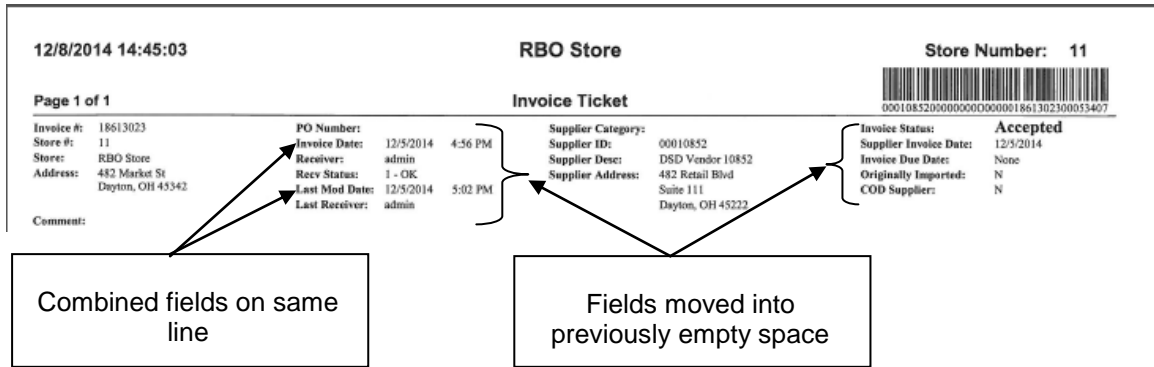
The new parameter: Print Invoice Barcode located on the Receiving tab must be enabled to display the barcode on the Invoice Ticket report for Item Receiving. It affects both the portrait and landscape versions of this report.



<b>New Parameter</b>	<b>Explanation</b>
Print Invoice Barcode	This parameter relates to the Invoice Ticket report in Item Receiving. If the parameter is checked, a Code 128 barcode is generated and displayed in the header of the Invoice Ticket report when it has been "Conditionally Accepted" or "Finalized". If the parameter is not checked (default), no barcode is generated or displayed.

# 420224 – Condensed Header on Landscape Invoice Ticket Report

The header of the landscape Invoice Ticket report in Item Receiving has been condensed in order to allow more invoice detail rows to be printed per page. The header now uses about half the area than what it did in previous versions while still displaying the same fields. This was accomplished by moving the field groupings that start with the PO Number and Invoice Status up into the area of the header that was previously empty space and by combining fields previously displayed on separate lines. Specifically, the Invoice Date and Time Received fields are now displayed on the same line next to the Invoice Date label and the Last Mod Date and Last Mod Time fields are now displayed on the same line next to the Last Modified label.



# Technical Reference Appendix

## Out of Scope

Limitations of new features in this release are listed below (and were not addressed in development).

**Note:**

The limitations below are known as of this writing, and are provided in order to assist users and support personnel to plan, install and operate the capabilities described in this document. While Retalix endeavors to ensure that this information is correct and fairly stated, no attempt is made here to catalog all limitations that could be construed or that may become known in the course of use or experience.

FSD Number	Enhancement	Out of Scope
303025	Batch Logging	Changes made to support Batch Logging were made for the current release only (and will not be made to previous RBO releases).
399301	Invoice Ticket Barcode	Changes made to support the Invoice Ticket Barcode were made for the current release only (and will not be made to previous RBO releases).
420224	Condensed header on Landscape Invoice Ticket Report	Changes made to support the condensed header on the Landscape Invoice Ticket report were made for the current release only (and will not be made to previous RBO releases).

## Dependencies

Dependencies to utilize new features in this release are listed below.

FSD Number	Enhancement	Dependencies
303025	Batch Logging	No dependencies
399301	Invoice Ticket Barcode	Requires the "Code 128" font to be installed
420224	Condensed header on Landscape Invoice Ticket Report	No dependencies



© Retalix, Inc. 2014

Retalix, Inc. endeavors to ensure that the information in this document is correct and fairly stated but does not accept liability for any error or omission.

The development of Retalix products and services is continuous and published information may not be up to date. It is important to check the current position with Retalix. This document is not part of a contract or license, save insofar as may be expressly agreed.