

*Retalix BackOffice Install Guide  
FM Emulator Installation for  
Motorola MC3190 Series  
with Windows CE6.0*

## RBO Installation Guides

<b>Date of Issue</b>	<b>Product Identification Number</b>	<b>Part Number</b>	<b>Brief Description</b>
August 2011	45201/118	89000672	4.8.0 Install Overview
August 2011	45201/118	89000673	4.8.0 Installing with SQL Express
September 2011	45201/118	89000678	4.8.0 Installing with SQL Express (Updated)
September 2011	45201/118	89000679	4.8.0 Installing with SQL Workgroups
February 2013	45201/118	89000757	4.8.0 Installing with Windows 7 or Windows 2008 Server
April 2013	45201/118	89000677	Emulator Install with MC3190

**©Copyright Retalix, Inc. 1995-2013  
All rights reserved**

This publication is protected by federal copyright law. This document and its contents are the proprietary, confidential information and property of Retalix, Inc. ("Retalix"). Unauthorized disclosure, reproduction, distribution or use of this document and/or its contents in any form is strictly prohibited. No part of this publication may be reproduced or transmitted into any human or computer language in any form or by any means, stored in a retrieval system, transmitted, redistributed, translated or disclosed to third parties, or de-compiled in any way including, but not limited to, photocopy, photograph, electronic, mechanical, magnetic or manual without the express written permission of Retalix or its licensors, if any. This document, notwithstanding the above, may be distributed in electronic or printed form to personnel who are employed by either (1) a Retalix customer of the subject system of this document or (2) personnel from an authorized Retalix Channel Partner of the subject system of this document. All copies, so distributed and/or so authorized, shall contain a full copy of this copyright notice.

Retalix has prepared this manual for use by users, authorized third parties and personnel of Retalix as a guide to the proper installation, operation, customization and/or maintenance of Retalix equipment and software. The drawings and specifications contained herein are the property of Retalix and/or its licensors.

Retalix endeavors to ensure that the information in this document is correct and fairly stated but does not accept liability for any error or omission. Retalix makes no representation or warranties with respect to the contents hereof, and specifically disclaims any implied warranties of merchantability or fitness for a particular purpose or non-infringement. No commitments by Retalix or its suppliers are made by or from this documentation which is provided for information only.

Development of Retalix products and documentation is continuous: Retalix reserves the right to revise this publication and to make changes from time to time in the contents hereof or in the products herein described or discussed without notice and without any obligation of Retalix to notify any person or organization of such revision or changes. Information published in this document will likely become obsolete over time and it is recommended that users regularly check for updates and newer versions.

The trademarks Retalix, StoreNext, ISS45, ScanMaster, R10, PocketOffice, RBO, Connected Payments, Connected Services, Connected Loyalty and all other Retalix product names are registered trademarks or trademarks of Retalix; all other trademarks or registered trademarks are the property of their respective owners. Third-party products, services, or company names referenced in this document may be trademarked or copyrighted by their respective owners, and are for identification purposes only. Copyrights, trademarks and license agreements shall be governed and construed in accordance with the laws of the State of Texas and the Federal Arbitration Act, and shall benefit Retalix, its successors, and assigns.

Address comments and corrections to:

Retalix, Inc.  
Software Program Director  
797 Commonwealth Drive  
Warrendale, PA 15086

## Overview

The RBO FM Emulator application allows mobile devices communicating on a Wireless Local Area Network (WLAN) to run RBO FM Item Maintenance, FM Receiving, FM Flexible Data Collect, and FM Ordering applications. These applications were initially supported on FM terminals but are now supported running within the FM Emulator application on Windows CE and Windows Mobile devices like the Motorola 3190.

This document will guide you through the installation of:

- RBO FM Emulator onto a Motorola MC3190 running Windows Embedded CE 6.0

The following documents will be helpful to you once this installation is completed:

- RBO FM Emulator User's Guide – provides details on how to setup and use this application.
- RBO User's Guide – provides details on setting up and running each of the FM applications that can be run within the FM Emulator (refer to the FM Parameters, FM Commands, and FM Application Procedures sections under FM Utilities).

### Installation Prerequisites:

- Windows Mobile Device Center or Microsoft Active Sync installed on the RBO Server. Refer to the Installation Notes below for determining which one is compatible with your system.
- Motorola MC3190 mobile device ready for use with battery charged.
- Motorola MC3190 cradle is connected to the above system using the USB cable.
- Motorola MC3190 is recognized by Windows Mobile Device Center or Microsoft Active Sync on the RBO Server when it is put in the cradle and powered on.

### Microsoft Active Sync and Windows Mobile Device Center Installation Notes:

- Windows Mobile Device Center is supported on newer versions of Windows beginning with Vista and Windows 7 and Microsoft Active Sync is supported on later versions including Windows XP and 2003. Refer to the following links for details and downloads:  
[Windows Mobile Device Center](#)  
[Microsoft Active Sync 4.5](#)
- In Windows Server 2008, the server feature: Desktop Experience must be enabled in order to install Windows Mobile Device Center. Enable this feature as follows and then download and install the Windows Mobile Device Center.
  1. **Start** the **Server Manager** application (under Programs\Administrative Tools)
  2. In the Features pane, choose: **Add Features** which will open the Select Features dialog.
  3. **Check** the **Desktop Experience** node and then **Next**.

4. Choose **Install** in the Confirm Installation window.
  5. Reboot the server when prompted to complete the installation.
  6. Allow the installation to complete after the reboot (as it will restart automatically).
- In Windows 7, the Windows Mobile Device Center will usually download and install automatically the first time the mobile device is powered on with the cradle connected to the system. This occurs as part of the Windows USB device recognition process if there is internet connectivity.

RBO FM Emulator Installation Overview:

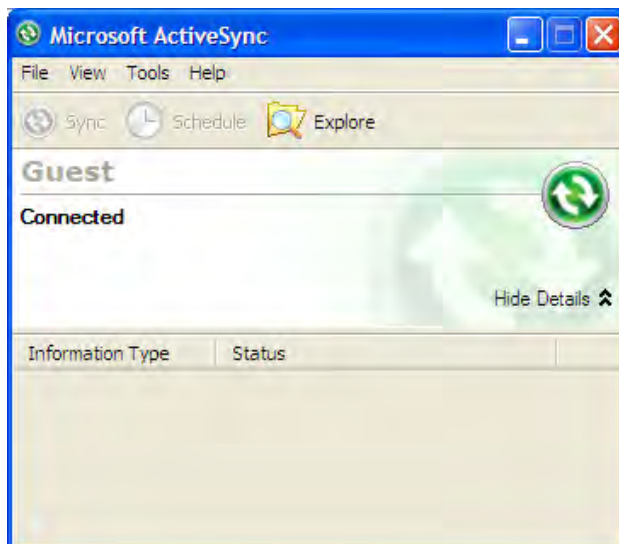
After Windows Mobile Device Center or Microsoft Active Sync is installed on the RBO Server as described above, the installation of the RBO FM Emulator is performed as follows. The details for each step are provided in the sections below.

1. Establish a connection between the RBO Server and the mobile device.
2. Copy the installation file: RBOFMInstall.cab to the mobile device.
3. Run the installation file: RBOFMInstall.cab on the mobile device and accept the default installation directory.
4. (Optional) Create a shortcut on the desktop of the mobile device to the RBO FM Emulator.

## Installation

### Step 1 – Establish a connection to the Mobile Device

- a) Put the mobile device into the cradle and power it on. This will automatically open the Microsoft Active Sync or the Windows Mobile Device Center application on the RBO Server, depending upon which is installed as described above.
- b) For **Microsoft Active Sync**, choose: **No** in the **New Partnership** window to respond to the question: “Would you like to set up a Partnership”. Then, choose **Next**. The Microsoft Active Sync will be opened indicating that the device is Connected.



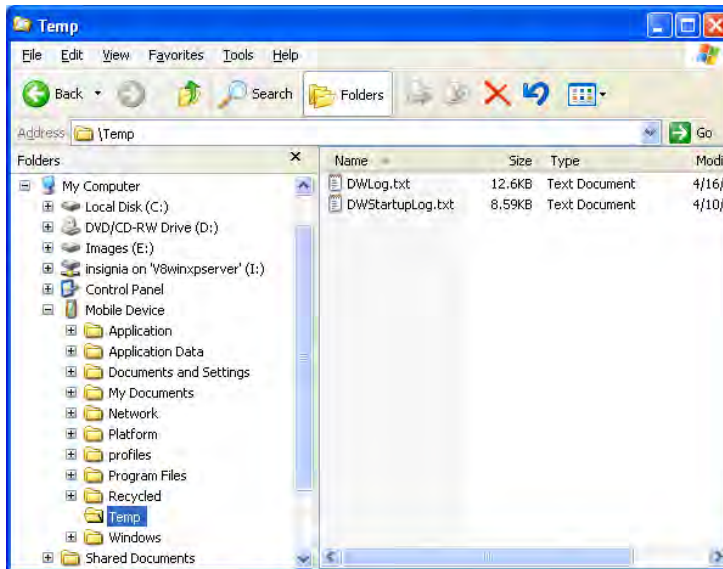
For **Windows Mobile Device Center**, no action is required. The window will indicate that the device is Connected.



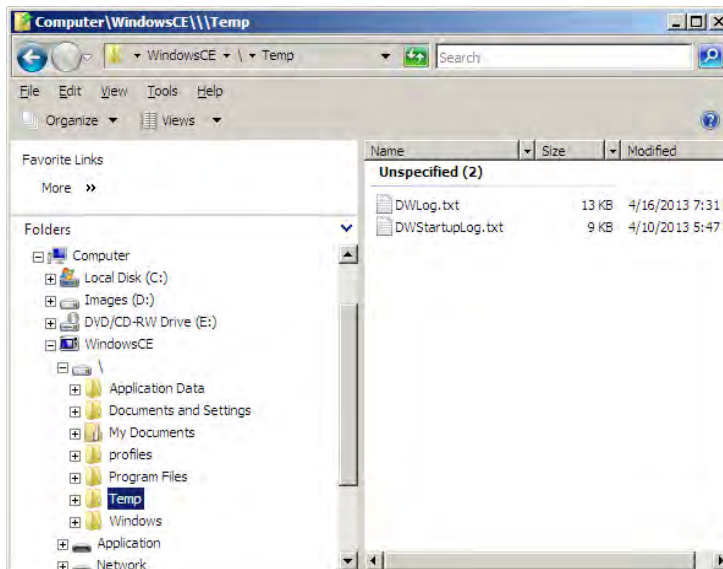
### Step 2 – Copy the Installation file to the Mobile Device

- a) From the RBO Server, open Windows Explorer.
- b) **Select** and **copy** the downloaded file: **RBOFMInstall.CAB** (Use the Copy option from the Edit menu or right-click on the file and choose **Copy**).
- c) In the same Windows Explorer window, **open** the **\Temp** folder on the mobile device as shown below.

With **Microsoft Active Sync**, the **\Temp** folder on the mobile device will appear as a subdirectory listed under **Mobile Device** as shown below.



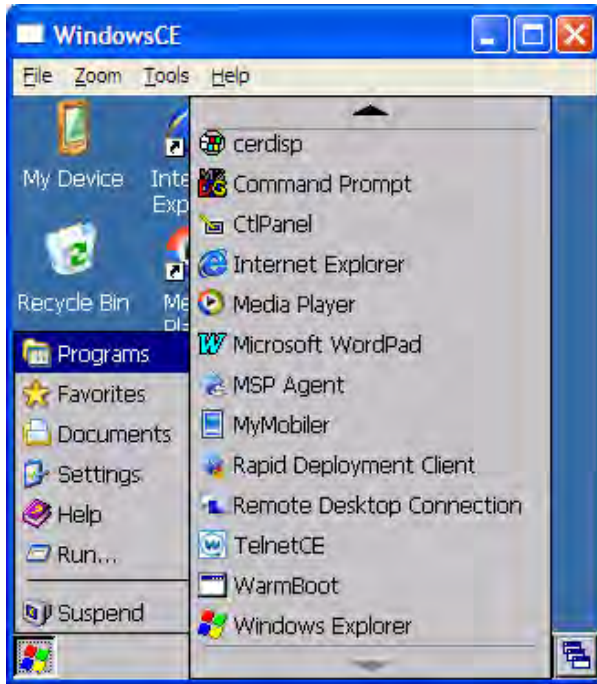
With **Windows Mobile Device Center**, the **\Temp** folder on the mobile device will appear as a subdirectory under the directory: **\** which is listed under **WindowsCE** as shown below.



- d) **Right-click** in the open space of the **\Temp** folder, and choose: **Paste**.  
Choose **“OK”**, if prompted about converting files between the mobile device and the desktop.
  
- e) **Close** the **Windows Explorer** and **Microsoft Active Sync** or **Windows Mobile Device Center** windows.

### Step 3 – Run the installation .CAB file

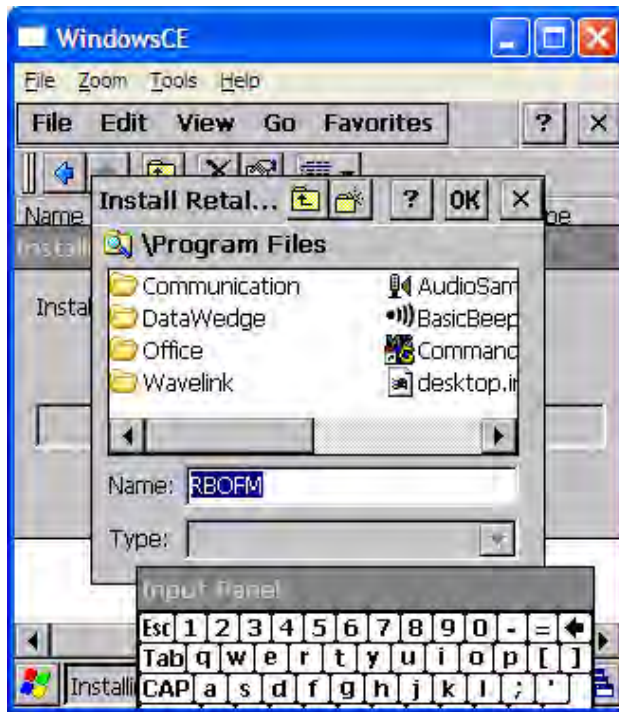
- a) Remove the mobile device from the cradle.
- b) Select **Windows Explorer** from the mobile device **Start – Programs** menu.



- c) Open the **Mobile DeviceTemp** folder and then **open** the **RBOFMIInstall.CAB** file to begin the install.



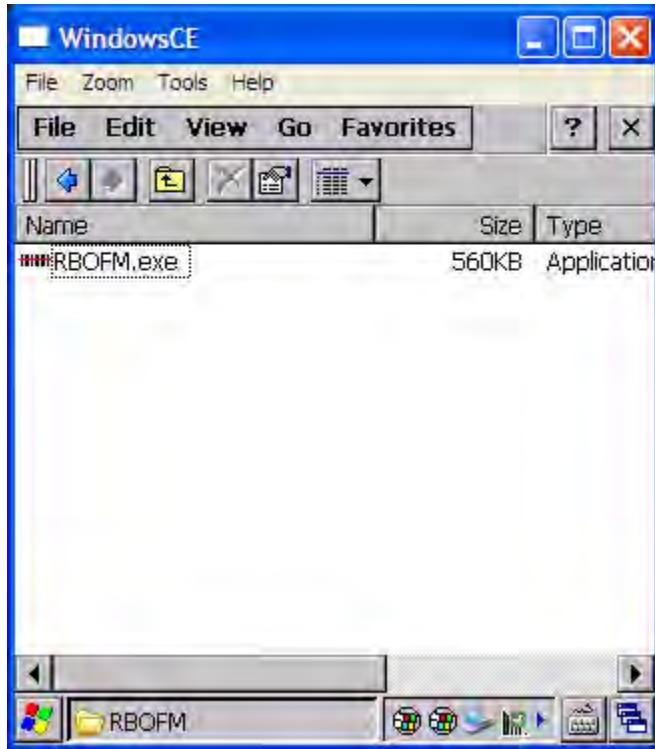
- d) In the **Install** window, accept the default target directory: **\Program files** and name: **RBOFM** and choose: **OK**.



- e) Choose **No to All**, if prompted to replace an existing sound (.wav) file on the mobile device. NOTE: These sound files are included in the install to ensure that they are present on the mobile device but their version is not important to the RBO FM Emulator.

## Step 4 (optional) – Create a shortcut on the desktop of the Mobile Device to the RBO FM Emulator

- a) Select **Windows Explorer** from the mobile device **Start – Programs** menu.
- b) Open the **\\Program Files\RBOFM** directory.



- c) Select the file: **RBOFM.exe**.
- d) In the **File** menu, choose **Send to – Desktop as Shortcut**.

