



# ISS 45

 *ISS45 V8 Table Extracts*



*Version 8.10.1*

## ISS45 V8 Table Extracts User Reference

<b>Date of Issue</b>	<b>Product Identification Number</b>	<b>Part Number</b>	<b>Brief Description</b>
July 2005	45001/099	89000227	8.10 Release

**© Copyright StoreNext Retail Technologies LLC 1995-2005  
All rights reserved**

This publication is protected by federal copyright law. No part of this publication may be reproduced or transmitted into any human or computer language in any form or by any means, stored in a retrieval system, transmitted, redistributed, translated or disclosed to third parties, or de-compiled in any way including, but not limited to, photocopy, photograph, electronic, mechanical, magnetic or manual without the express written permission of StoreNext Retail Technologies LLC or its licensors, if any. All copies, so authorized, shall contain a full copy of this copyright notice.

StoreNext Retail Technologies LLC endeavors to ensure that the information in this document is correct and fairly stated but does not accept liability for any error or omission. StoreNext Retail Technologies LLC makes no representation or warranties with respect to the contents hereof, and specifically disclaims any implied warranties of merchantability or fitness for a particular purpose or non-infringement. No commitments by StoreNext or its suppliers are made from this documentation which is provided for information only.

Development of StoreNext products and documentation is continuous: StoreNext Retail Technologies LLC reserves the right to revise this publication and to make changes from time to time in the contents hereof or in the products herein described or discussed without notice and without any obligation of StoreNext Retail Technologies LLC to notify any person or organization of such revision or changes. Information published in this document will likely become obsolete over time and it is recommended that users regularly check for updates and newer versions.

StoreNext Retail Technologies LLC has prepared this manual for use by users, authorized third parties and personnel of StoreNext Retail Technologies LLC as a guide to the proper installation, operation, customization and/or maintenance of StoreNext Retail Technologies LLC equipment and software. The drawings and specifications contained herein are the property of StoreNext Retail Technologies LLC and/or its licensors.

Third-party products, services, or company names referenced in this document may be trademarked or copyrighted by their respective owners, and are for identification purposes only.

Copyrights, trademarks and license agreements shall be governed and construed in accordance with the laws of the State of Texas and the Federal Arbitration Act, and shall benefit Retailix, its successors, and assigns.

Address comments and corrections to:

StoreNext Retail Technologies LLC  
Software Program Director  
6100 Tennyson Parkway  
Suite 130  
Plano, Texas 75024

# Table of Contents

- Overview .....4**
- Table Extracts.....4**
- Table Extract Maintenance .....6**
  - To create a new table extract:.....7
  - To edit an existing table extract: .....8
  - Log File .....9

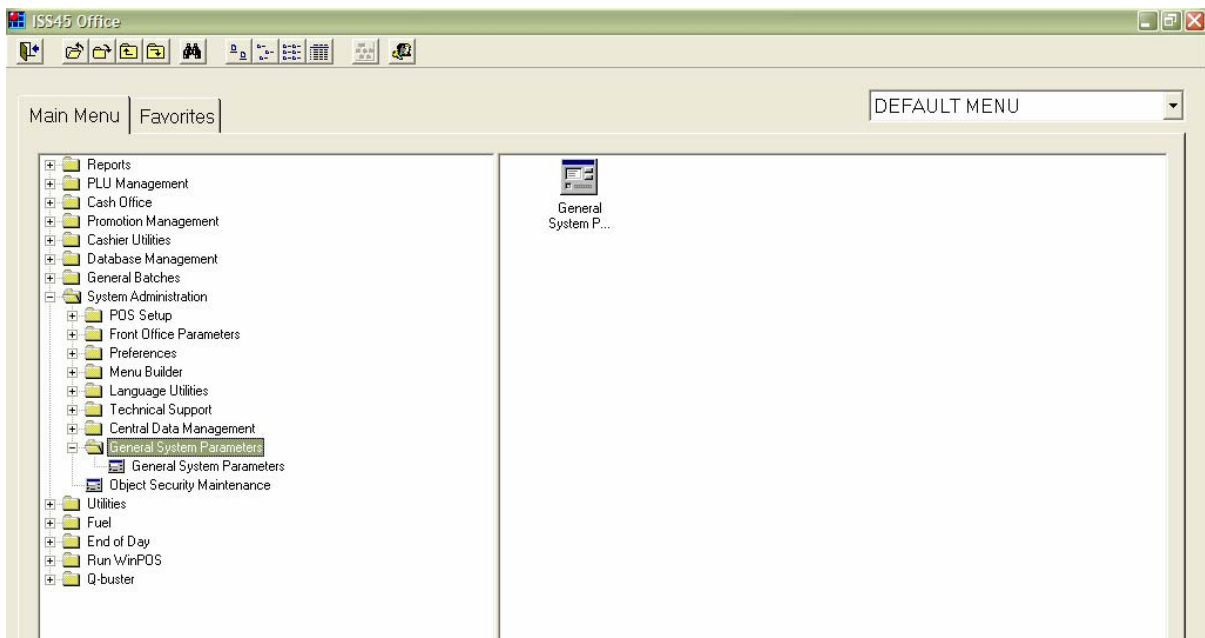
## Overview

Tool used to create extracts from SQL tables. The interface enables users to access the FrontOff database and select specific tables and fields to extract in an easier format. Users can manipulate the data to edit the look of the extract by changing the header description, length of the fields, and the range of the extract. The user can then select the type of extract to use (Text, Excel, or XML).

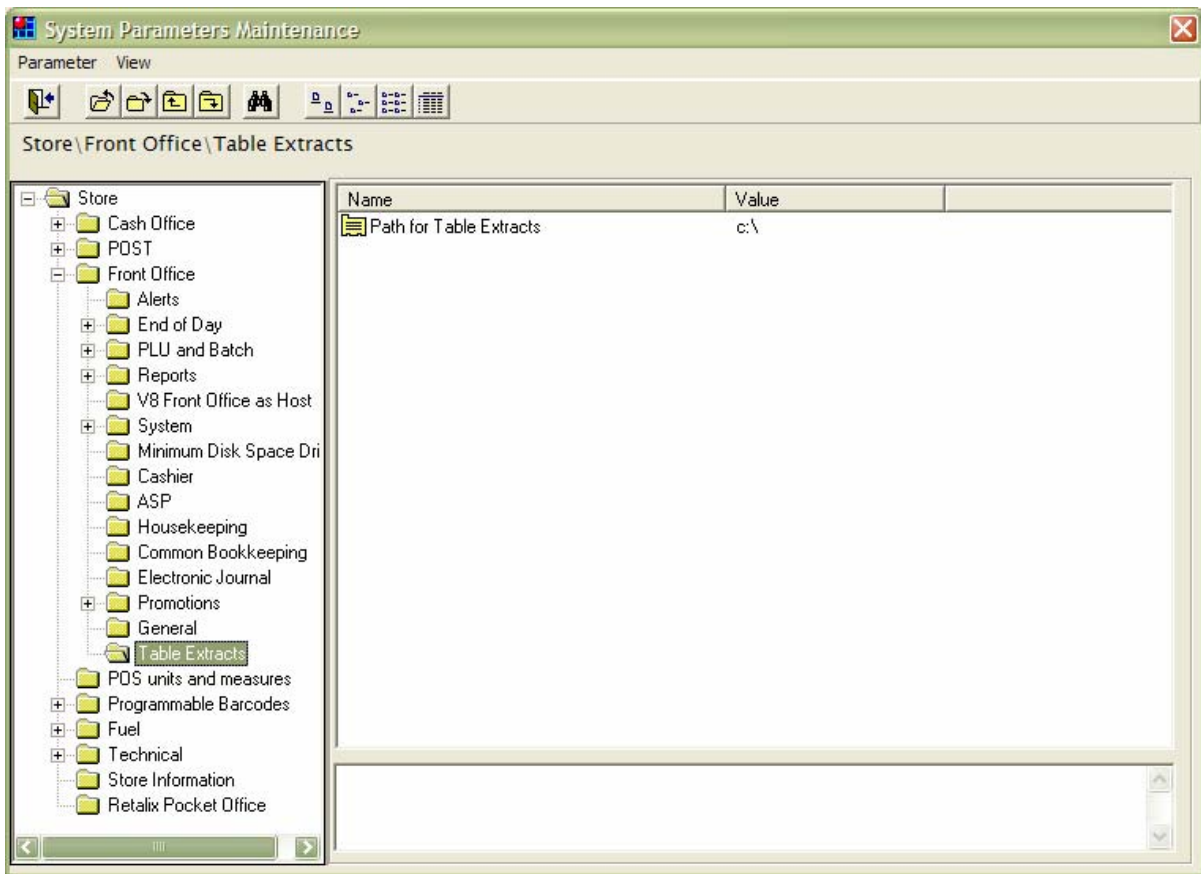
## Table Extracts

Created new parameter that allows the user to create a path for the table extracts. If no value is set for this parameter, the extracts will be created in the default **Program Files\POSWare\Office\Export** directory.

1. From the **Main Menu** tab, open **System Admin\General System Parameter\General System Parameter**.

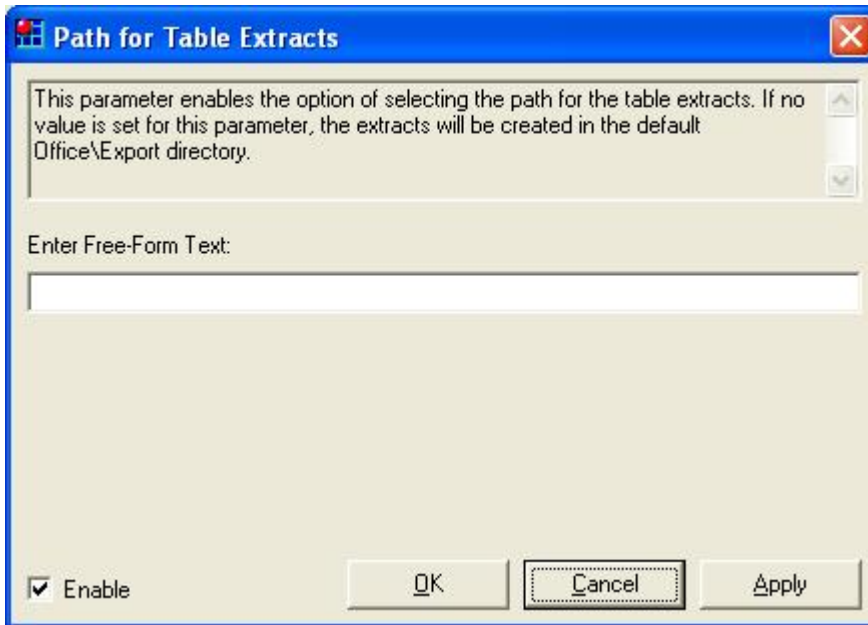


- From the System Parameter Maintenance screen, expand **Store\Front Office\Table Extracts** and then select the parameter **Path for Table Extracts**.



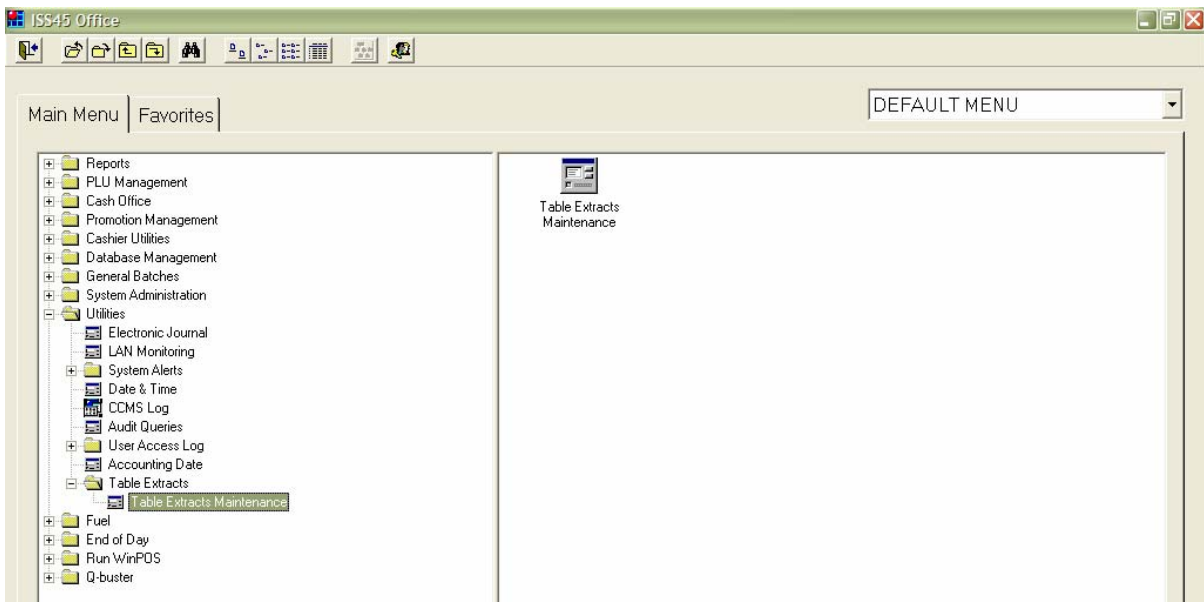
3. On the Path for Table Extracts window, enter a path for the table extracts in the **Enter Free-Form Text** field.
4. Click **Apply** and then click **OK** to return to the System Parameters Maintenance screen.

**Note:** The path for the table extract should appear in the **Value** field on the System Parameters Maintenance screen.

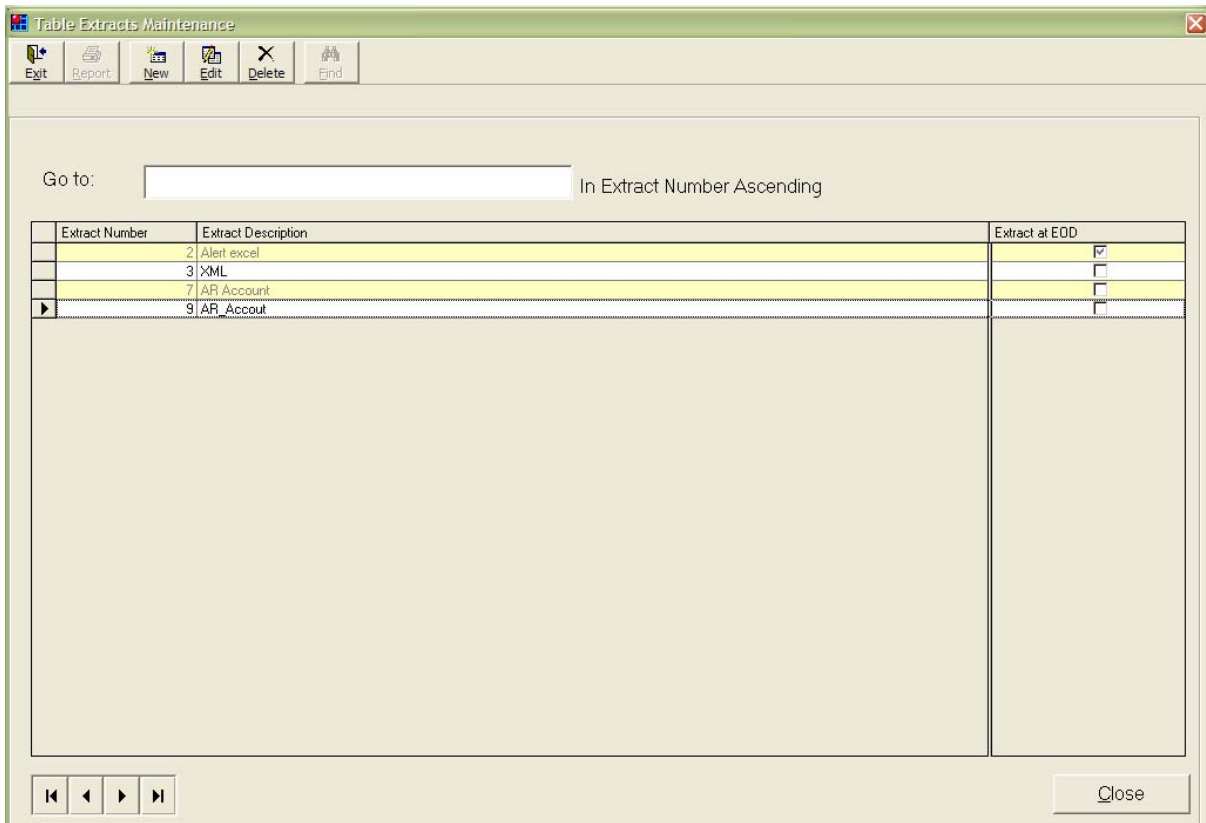


## Table Extract Maintenance

1. From the **Main Menu** tab open **Utilities\Table Extracts** and then select **Table Extract Maintenance**.

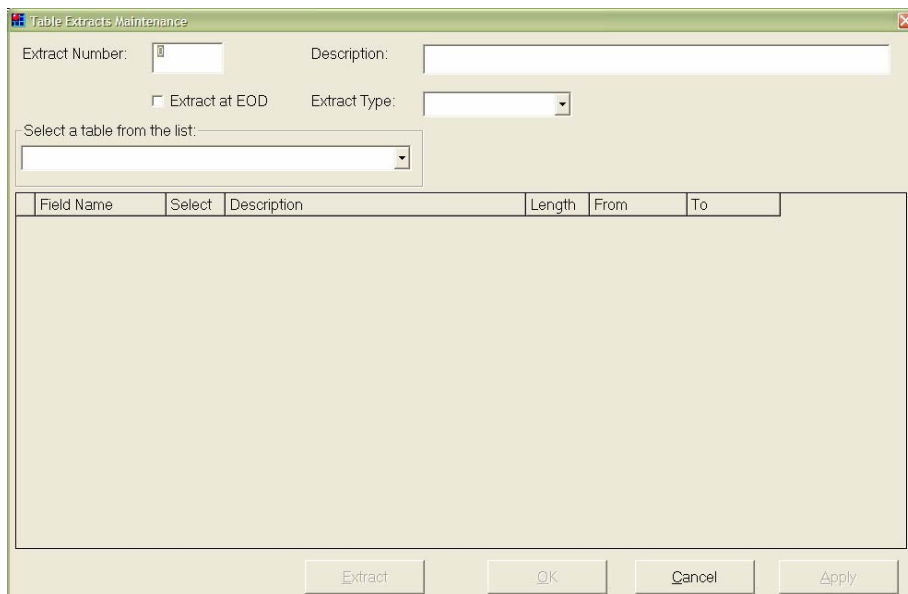


- The Table Extract Maintenance – Multi screen is displayed. This screen displays table extracts that have been created and allows the user to edit an existing table extract or create a new one.



➤ **To create a new table extract:**

- On the Table Extract Maintenance – Multiple screen, click **New** to open the Table Extract Maintenance – Single screen.



2. In the **Extract Number** field, enter an ID number of the extract.
3. In the **Description** field, enter the name of the extract.
4. In the **Extract Type** field, enter one of the three types of extract files (**Text**, **Excel**, **XML**).
5. Select a table from the drop down list to display the field names to extract.
6. In the **Select** field check the fields to display in the table extract.
 

**Note:** At least one field must be selected in order to extract the table.
7. In the **Length** field, the user can indicate the length of the specific field of the extract file.
8. In the **From** and the **To** field, the user can indicate the lower and upper limits for the range when filtering records based on a specific field.
 

**Note:** The **From** and **To** fields only support numeric fields.
9. To extract during the end of day, check the **Extract at EOD** field.
 

**Note:** If selecting a table that is cleared at EOD an extract will not be generated.
10. Click **Apply** and then click **Extract**.
 

**Note:** If nothing happens after clicking **Extract** it indicates there was an error in the criteria created.

➤ **To edit an existing table extract:**

1. On the Table Extract Maintenance – Multiple screen, click **Edit** to open the Table Extract Maintenance – Single screen, displaying an existing table extract.

Table Extracts Maintenance

Extract Number:  Description: Alert excel

Extract at EOD Extract Type: EXCEL

Select a table from the list: ALRT

Field Name	Select	Description	Length	From	To
ALRT_ID	<input checked="" type="checkbox"/>	ALRT_ID		10	20
ALRT_SEV	<input type="checkbox"/>	ALRT_SEV			
ALRT_MSG	<input checked="" type="checkbox"/>	ALRT_MSG			
ALRT_POP_MSG_	<input type="checkbox"/>	ALRT_POP_MSG_FG			
ALRT_PWD_RQRI	<input type="checkbox"/>	ALRT_PWD_RQRD_FG			
IGNR_ALRT_FG	<input checked="" type="checkbox"/>	IGNR_ALRT_FG			
EMAIL_FG	<input type="checkbox"/>	EMAIL_FG			
TCPIP_FG	<input type="checkbox"/>	TCPIP_FG			
ADD_EVENT_FG	<input checked="" type="checkbox"/>	ADD_EVENT_FG			
ACTION_TYP	<input type="checkbox"/>	ACTION_TYP			
ACTION	<input checked="" type="checkbox"/>	ACTION			
OCCUR_NUM	<input type="checkbox"/>	OCCUR_NUM			
TM_RESPONSE	<input type="checkbox"/>	TM_RESPONSE			
ALRT_CRITERIA	<input type="checkbox"/>	ALRT_CRITERIA			
AUTO_CONFIRM	<input type="checkbox"/>	AUTO_CONFIRM			
CSHP_NOTIFY_F	<input type="checkbox"/>	CSHP_NOTIFY_FG			

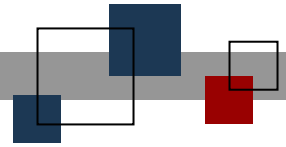
Extract OK Cancel Apply

2. Make any changes to the displayed fields, click **Apply** and then click **Extract**.

**Note:** The **Description** field can be edited and is the Header that displays in the extract file. Spaces are not allowed.

### ➤ **Log File**

All table extracts are recorded in the **App\_Rpt.log** file located under Program Files\POSware\Office\Log\App\_Rpt.log. When a table is not extracted, due to one setting or criteria being invalid or an empty table, it is noted in the log with a corresponding reason however no error message is displayed.



**© StoreNext Retail Technologies LLC 2005**

StoreNext Retail Technologies LLC endeavors to ensure that the information in this document is correct and fairly stated but does not accept liability for any error or omission.

The development of StoreNext products and services is continuous and published information may not be up to date. It is important to check the current position with StoreNext. This document is not part of a contract or license save insofar as may be expressly agreed.